

1 Effect of tocilizumab in hospitalized 2 patients with severe pneumonia 3 COVID-19: a cohort study

4
5 Authors:

6 Benjamin Rossi^{1*} and Lee S. Nguyen^{2,3*}, Philippe Zimmermann⁴, Faiza Boucenna¹, Louis
7 Dubret⁴, Louise Baucher¹, Helene Guillot¹, Marie-Anne Bouldouyre¹, Yves Allenbach⁵, Joe-
8 Elie Salem³, Paul Barsoum⁶, Arezki Oufella⁴ and Helene Gros¹

9
10 * these authors equally contributed to the manuscript

11 Affiliation:

12 ¹ Department of Internal Medicine, Robert Ballanger hospital, 93600 Aulnay-sous-bois,
13 France

14 ² Research & innovation of CMC Ambroise Paré, 92200 Neuilly-sur-Seine, France

15 ³ Sorbonne Université, INSERM, Clinical Investigations Center Paris-Est, CIC-1901, AP.HP.6
16 Pitié-Salpêtrière, 75013 Paris, France

17 ⁴ Department of pharmacy, Robert Ballanger hospital, 93600 Aulnay-sous-bois, France

18 ⁵ Sorbonne Université, Department of Internal medicine and Clinical Immunology, AP.HP.6
19 Pitié-Salpêtrière, 75013 Paris, France

20 ⁶ Department of cardiology, Robert Ballanger hospital, 93600 Aulnay-sous-bois, France
21

22 **Corresponding author**

23 Dr Benjamin Rossi, Department of internal medicine, 93600 Aulnay-sous-bois, France, tél:

24 +33149367021; +33149367199; benjamin.rossi@ght-gpne.fr
25

26 **Words: 1872 (2 figures, 1 table)**

27 **Keywords:** Anti-interleukin-6, COVID-19, SARS CoV2, severe pneumonia, cytokine release
28 syndrome
29

30 **Abstract (238/250 words)**

31 **Background.** Tocilizumab, a drug targeting interleukin-6 administrated in the right
32 timeframe may be beneficial in coronavirus-disease-2019 (COVID-19). We aimed to assess its
33 benefit, drawing from observations in compassionately treated patients.

34 **Methods:** In a retrospective case-control study, treatment effect (tocilizumab 400mg, single-
35 dose) was assessed using three statistical methods: propensity-score matching, Cox
36 multivariable survival and inverse probability score weighting (IPSW) analyses. Were
37 included all patients hospitalized with COVID-19, who presented severity criteria with
38 $SpO_2 \leq 96\%$ despite O_2 -support $\geq 6L/min$ for more than 6 hours. Were excluded patients in
39 critical care medicine department and those under invasive mechanical ventilation. Primary
40 outcome was a composite of mortality and ventilation, with a maximum follow-up of 28
41 days.

42 **Results:** 246 patients were included (106 treated by tocilizumab). They were 67.6 ± 15.3
43 years-old, with 95 (38.5%) women. Delay between first symptoms and inclusion was 8.4 ± 4.5
44 days. Overall, 105 (42.7%) patients presented the primary outcome, with 71 (28.9%) deaths
45 during the 28-days follow-up. Propensity-score-matched 84 pairs of comparable patients. In
46 the matched cohort (n=168), tocilizumab was associated with fewer primary outcomes
47 (hazard ratio (HR)=0.49 (95% confidence interval (95CI)=0.3-0.81), p-value=0.005). These
48 results were similar in the overall cohort (n=246), with Cox multivariable analysis yielding a
49 protective association between tocilizumab and primary outcome (adjusted HR=0.26
50 (95CI=0.135-0.51, $p=0.0001$), confirmed by IPSW analysis ($p<0.0001$). Analyses on mortality
51 with 28-days follow-up yielded similar results.

52 **Conclusion:** In this retrospective study, tocilizumab single-dose was associated with
53 improved survival without mechanical ventilation in patients with severe COVID-19.

54 **Introduction**

55

56 The pandemic of coronavirus, responsible for the severe acute respiratory syndrome (SARS),
57 called Coronavirus Disease (COVID-19) started in the late 2019. It quickly spread worldwide,
58 notably in Europe.(1)

59 It is responsible for severe pneumonia, resulting in a high rate of transfers to intensive care
60 units (ICU) and in-patients mortality of 5% to 32%.(2)

61 Severity has been related to an exaggerate immune response, the cytokine release
62 syndrome (CRS), mediated by pro inflammatory cytokines, including interleukin IL-6, IL-12
63 and tumor necrosis factor α leading to various organs dysfunction including lung, brain and
64 heart.(3) Previously, tocilizumab, an antibody targeting IL-6 receptors proved efficient
65 against CRS.(4) Opposing CRS may decrease further inflammatory pulmonary lesions, i.e.
66 respiratory deterioration requiring mechanical ventilation, transfers to ICU and deaths.(5, 6)

67 Starting on March 23, 2020, we administrated off-label tocilizumab in patients with severe
68 COVID-19 pneumonia as compassionate use. In the present report, we assessed the effect of
69 tocilizumab on mortality and mechanical ventilation in a cohort of patients hospitalized for
70 severe COVID-19 pneumonia. To mitigate selection bias, we performed a triple analysis
71 including propensity-score matching, Cox multivariable and inverse probability score
72 weighting analyses, to compare patients who received tocilizumab, to those who did not.

73 **Material and method**

74 **Study population**

75 In this observational single-center study, in Robert Ballanger regional hospital, all patients
76 were screened for SARS-coronavirus 2 starting on March 14th, 2020. Diagnosis required
77 positive testing with reverse transcription polymerase chain reaction (RT-PCR) or chest CT-
78 scan with typical lesions.(7) Inclusion criteria was severe COVID-19 pneumonia, i.e. pulse

79 oxygen (O₂) saturation (SpO₂) ≤96% despite O₂ flow ≥6 L/minute delivered by high
80 concentration oxygen mask, for >6 hours. Were excluded patients under invasive mechanical
81 ventilation and those critical care medicine department. Starting on March 23, 2020,
82 tocilizumab was made available for off-label compassionate use in severe COVID-19
83 pneumonia in our center. Patients were compared between two group: those who received
84 tocilizumab (a single intravenous injection, 400 mg) and those who did not (control group).
85 This retrospective study was approved by research ethics committee and registered on
86 clinicaltrials.gov (NCT04366206).

87 **Treatment intervention**

88 Tocilizumab was made available for compassionate use by hospital pharmacists on March
89 23th, 2020. Choice and indication of treatment depended on attending physician, and
90 information was given to all patients prior to being treated. No criteria was retained to
91 exclude patients from treatment, hence patients without full engagement status (i.e.
92 recused from ICU) were still eligible for treatment.

93 **Study variables**

94 The primary outcome was a composite of all-cause mortality and invasive mechanical
95 ventilation (i.e. requiring tracheal intubation). Follow-up period was 28 days after inclusion.
96 All data were prospectively collected in electronical medical records, which were then
97 extracted for the purpose of this study. List of available data is presented in *Supplementary*
98 *Material*. Follow-up was complete for all patients.

99 **Statistical analyses**

100 Baseline characteristics of patients treated by tocilizumab were compared to that of the
101 control group. In the primary analysis, 1:1 nearest-neighbor propensity-score matching was
102 performed using the following variables: age, sex, smoking status, history of coronary artery

103 disease, stroke, heart failure or peripheral artery disease, hypertension, chronic kidney
104 disease with eGFR less than 60 mL/min/1.73², cancer, long-term corticosteroid treatment,
105 use of antibiotics, of antivirals, of corticosteroids, of baricitinib after admission, SpO₂/FiO₂
106 ratio at admission, time between admission and inclusion, and SpO₂/FiO₂ ratio and CRP at
107 inclusion.(8) A second analysis using a multivariable Cox proportional hazard analysis was
108 performed in the entire cohort, with the following independent covariables: tocilizumab
109 injection, engagement status, age, systolic blood pressure at inclusion, SpO₂/FiO₂ ratio at
110 admission and SpO₂/FiO₂ ratio at inclusion. A third analysis using inverse probability score
111 weighting (IPSW) approach was also performed using the entire cohort.(9) Kaplan-Meier
112 curves were used to compare the two groups in the matched cohort. Cox proportional
113 hazards modeling was used to assess the association between tocilizumab and the primary
114 outcome in the overall cohort. Conclusions were drawn only if the three analyses yielded
115 concordant results. Continuous variables were presented as mean ± standard deviation and
116 categorical variables as number (proportion). All analyses were performed using SPSS (IBM,
117 Armonk, USA) and R software.

118 **Results**

119 In total, 106 patients treated by tocilizumab were included and compared to 140
120 control patients (flow-chart is presented in **Supplementary Material**). Overall, 105 (42.7%)
121 patients presented the primary outcome, with 71 (28.9%) deaths during the 28-days follow-
122 up. Baseline characteristics and comparisons are presented in **Table 1**. In the overall cohort
123 (n=246), patients in the tocilizumab group were younger than those in the control group
124 (64.3 ± 13.0 vs 70.1 ± 16.5 years-old, $p < 0.001$), more had full engagement status (73 (68.9%)
125 vs 71 (51.4%), $p = 0.006$), more were treated with antibiotics (106 (100%) vs 134 (95.7%),
126 $p = 0.04$) and by corticosteroids (43 (40.6%) vs 38 (27.1%), $p = 0.27$)(see **Supplementary Table**
127 **1** for details on overall cohort). In the tocilizumab group, delay between study inclusion and
128 tocilizumab administration was 1.0 ± 1.0 days.

129 *Propensity-score matched cohort*

130 Propensity-score matching yielded 84 pairs of patients (for a total of 168 patients in
131 the matched cohort). There was no significant difference between the two matched groups
132 regarding baseline characteristics (see **Table 1**). In the matched cohort (n=168), tocilizumab
133 was associated with fewer events (hazard ratio (HR)=0.49 (95% confidence
134 interval(95%CI)=0.30-0.81), $p = 0.005$)(see **Figure 1**).

135 *Overall cohort (Cox multivariable and IPSW analyses)*

136 In the overall cohort (n=246), Cox multivariable survival analysis found tocilizumab
137 independently associated with a lower incidence of the primary outcome (adjusted HR
138 (adj.HR)=0.34 (95%CI=0.22-0.52), $p < 0.0001$). Other variables associated with the primary
139 outcome were: SpO₂/FiO₂ ratio on the day of inclusion (per 1 unit increase, adj.HR=0.987
140 (95%CI=0.983-0.991), $p < 0.0001$) and chronic kidney disease (adj.HR=1.63 (95%CI=1.03-2.52),

141 $p=0.035$). IPSW confirmed the protective association between tocilizumab and primary
142 outcome ($p<0.0001$)(see **Figure 1**).

143

144 *All-cause mortality (28-days maximum follow-up)*

145 When considering all-cause mortality with a maximum follow-up of 28 days, in the
146 matched cohort ($n=168$), tocilizumab was associated with fewer deaths ($HR=0.42$
147 ($95CI=0.22-0.82$), $p=0.008$). In the overall cohort ($n=246$), Cox multivariable analysis yielded
148 an independent protective association between tocilizumab and mortality ($adj.HR=0.29$
149 ($95\%CI=0.17-0.53$), $p<0.0001$), the other independent variables associated with mortality
150 were full engagement status ($adj.HR=0.11$ ($95CI=0.05-0.23$), $p<0.0001$), S/F ratio at inclusion
151 (per 1-unit increase, $adj.HR=0.99$ ($95CI=0.985-0.995$), $p<0.0001$), chronic kidney disease
152 ($adj.HR=2.0$ ($95CI=1.22-3.27$), $p=0.006$) and systolic blood pressure at inclusion (per 1-mmHg
153 increase, $adj.HR=1.016$ ($95CI=1.005-1.028$), $p=0.006$). IPSW analysis was concordant
154 ($p<0.0001$)(see **Figure 2**).

155

156 *Sensitivity analyses*

157 As sensitivity analysis, we focused on the subgroup of patients with full engagement
158 status: 155 patients, including 73 (50.3%) treated with tocilizumab. In these 155 patients, 33
159 patients presented the primary outcome. Cox multivariable analyses yielded a protective
160 association between tocilizumab and the primary outcome ($adj.HR=0.43$ ($95CI=0.22-0.81$)
161 $p=0.01$); the other variables independently associated with the primary outcome were
162 SpO_2/FiO_2 ratio at inclusion (per 1-unit increase, $adj.HR=0.985$ ($95CI=0.979-0.992$)
163 $p<0.0001$) and temperature at inclusion (per $1^\circ C$ -increase, $adj.HR=1.39$ ($95CI=1.088-1.771$),
164 $p=0.008$). Similarly, in these 155 patients, 9 died during 28-days follow-up. Cox multivariable

165 analyses yielded a protective association between tocilizumab and the mortality
166 (adj.HR=0.11 (95CI=0.01-0.89) p=0.039).

167 In a second sensitivity analysis, we excluded patients who presented an outcome
168 during the first 48 hours, to mitigate selection bias (including immortal time bias). This
169 dataset comprised 204 patients, with 97 treated by tocilizumab; 63 patients presented the
170 primary outcome, and 46 died during 28-days follow-up. Using triple statistical method as in
171 the main analysis, tocilizumab was found significantly associated with fewer primary
172 outcomes (Cox multivariable analysis yielded adj.HR=0.40 (95CI=0.23-0.70), p=0.001)(see
173 **Supplementary Figure 1**). Similarly, tocilizumab was found protectively associated with
174 mortality (adj.HR=0.36 (95CI=0.18-0.70) p=0.003)(see **Supplementary Figure 2**)(details of all
175 multivariable models are presented in **Supplementary Material**).

176 **Discussion**

177 In this single-center retrospective study in 246 patients, with 106 treated by
178 tocilizumab, we observed a significant association between tocilizumab and fewer deaths
179 and requirement for invasive mechanical ventilation; in patients hospitalized for severe
180 COVID-19 pneumonia, with 28-days follow-up.

181 The study cohort was similar to that of previously described COVID-19 patients with a
182 median age of 68 years, 27.6% presenting cardiovascular history and 30.1% were obese.(10)
183 Median delay between first symptoms and treatment was 8 days, corresponding to the
184 delay of CRS onset described in SARS-Cov-2.(11)

185 Attenuating CRS may partly explain the significant decrease in the primary
186 outcome.(5, 6) CRS was related to interleukin accumulation, and a recent trial studying
187 effect of interleukin-1 blockade found significant improvement.(12) Similarly, in our study,
188 clinical improvement observed in patients treated by tocilizumab was akin to that described
189 in a single-center observational study in which 100 patients with Covid-19 were treated with
190 tocilizumab. With 20/100, 17.5% patients who died by day 10, these results are akin to ours
191 (with 28.9% deaths by day 28).(13) Interestingly, in that study, tocilizumab administration
192 protocol mentioned 800 mg twice in 87 patients and 800 mg three times in 13 patients,
193 similar to that of ongoing trials with two injections of up to 800 mg each, within a 3-days
194 period.(14, 15)

195 In comparison, in our study, dosage of tocilizumab was 400 mg, injected once,
196 following previous reports of improved outcomes chimeric antigen receptor-T-cell-induced
197 CRS with 8 mg/kg dosage.(4) Further confirming our results with the same dosage would
198 improve the availability of this costly biotherapy for which access may become an issue.(16)

199

200 We acknowledge several limitations. First, the single-center nature of this study
201 requires external validation, however, it guarantees homogeneity in the care of all patients,
202 in our non-ICU departments dedicated to treat COVID-19 patients, i.e. observed differences
203 are more likely to be due to tocilizumab. Second, although we aimed to mitigate selection
204 bias using three statistical methods, including propensity-score matching, Cox multivariable
205 and IPSW analyses, residual confounders are plausible.(8, 9) Due to comorbidities and lack of
206 beds in the context of Covid-19 pandemic, a significant proportion of patients were labeled
207 as limited, regarding possibilities of being transferred in critical care medicine department,
208 as well as invasive mechanical ventilation. However, these criteria did not alter indications
209 for tocilizumab, as a third was considered limited at admission. All analyses were adjusted
210 for this criterion in multivariable models. Furthermore, we performed additional sensitivity
211 analyses to further mitigate selection bias; analyses which yielded similar results with
212 significant association between tocilizumab and better survival without mechanical
213 ventilation, even focusing on patients with full therapeutic engagement (n=155). Third,
214 because arterial partial pressure of O₂ was not available in all patients, we used SpO₂/Fio₂
215 ratio to assess respiratory dysfunction, a validated marker in acute lung injury.(17) Fourth,
216 use of non-invasive ventilation and high-flow oxygenotherapy changed during the study
217 period, following evolving guidelines which advocated against during the first weeks of
218 pandemic to decrease virus aerosol propagation, and were then made more flexible. The
219 relative low proportion of patients who benefited from these treatments and the fact that
220 there was no difference between the two groups regarding this criterion decreases chances
221 of it being a bias although, residual confounding biases may remain. Finally, we did not
222 systematically assay IL-6, which may have proven valuable to identify patients for whom
223 effect was greater.(6)

224 These results point towards a clinical benefit of tocilizumab, however, they may not
225 replace a full-fledged randomized controlled trial, focusing on dosage adjustment and on
226 patients managed early, so that CRS may be adequately attenuated in patients with Covid-19
227 evolving towards clinical deterioration.

228

229 **Conclusion**

230 In this observational single-center study, in hospitalized patients presenting with
231 severe COVID-19 pneumonia, tocilizumab 400 mg single-dose was associated with lower
232 mortality and need for mechanical ventilation. These results warrant further clinical trials for
233 confirmation and dosage validation.

234

Table 1. Baseline characteristics, at admission and at inclusion.

	Control (n=140)	Tocilizumab (n=106)	p-value	Matched control (n=84)	Matched tocilizumab (n=84)	p-value
Clinical features, No (%)						
Age, mean±SD, years	70.1±16.5	64.3±13.0	0.003 [‡]	64.4±16.9	64.8±12.8	0.88
Female	59 (42.1%)	36 (34.0%)	0.19 [‡]	35 (41.7%)	29 (34.5%)	0.24 [‡]
Full engagement	72 (51.4%)	73 (68.9%)	0.006 [‡]	56 (66.7%)	58 (69%)	0.74 [‡]
Diabetes	53 (37.9%)	48 (45.3%)	0.24 [‡]	31 (36.9%)	35 (41.7%)	0.53 [‡]
Insulin treatment	23 (16.4%)	17 (16.0%)	0.93 [‡]	12 (14.3%)	9 (10.7%)	0.48 [‡]
Obesity (BMI>30kg/m ²)	40 (28.6%)	34 (32.1%)	0.55 [‡]	26 (31.0%)	27 (32.1%)	0.87 [‡]
Hypertension	79 (56.4%)	64 (60.4%)	0.53 [‡]	47 (56.0%)	47 (56.0%)	1 [‡]
ACEI treatment	21 (15.0%)	16 (15.1%)	0.98 [‡]	11 (13.1%)	12 (14.3%)	0.82 [‡]
ARB treatment	22 (15.7%)	28 (26.4%)	0.039 [‡]	14 (16.7%)	20 (23.8%)	0.25 [‡]
History of cardiovascular disease, stroke, peripheral artery disease, heart failure	43 (30.7%)	25 (23.6%)	0.22 [‡]	21 (25.0%)	21 (25.0%)	0.1 [‡]
Smoker (active or past)	29 (20.7%)	33 (31.1%)	0.06 [‡]	21 (25.0%)	23 (27.4%)	0.73 [‡]
History of COPD, asthma, emphysema, fibrosis	22 (15.7%)	17 (16.0%)	0.369 [‡]	12 (14.3%)	15 (17.9%)	0.53 [‡]
eGFR<60 ml/min/1.73m ²	24 (17.1%)	17 (16.0%)	0.82 [‡]	13 (15.5%)	12 (14.3%)	0.83 [‡]
Solid organ transplantation	3 (2.1%)	0 (0.0%)	0.26 [‡]	2 (2.4%)	0 (0.0%)	0.5 [‡]
HIV	1 (0.7%)	1 (0.9%)	1 [‡]	1 (1.2%)	0 (0.0%)	1 [‡]
Immunosuppressant drugs	12 (8.6%)	5 (4.7%)	0.24 [‡]	4 (4.8%)	4 (4.8%)	1 [‡]
Long-term oral corticosteroids	13 (9.3%)	5 (4.7%)	0.17 [‡]	6 (7.1%)	4 (4.8%)	0.75 [‡]
Malignancy (active)	17 (12.1%)	6 (5.7%)	0.08 [‡]	7 (8.3%)	5 (6.0%)	0.55 [‡]
Treatments after admission						
No. (%) under antibiotics	134 (95.7%)	106 (100.0%)	0.04 [‡]	84 (100.0%)	84 (100.0%)	NA
Betactamin	129 (92.1%)	105 (99.1%)	0.13 [‡]	81 (96.4%)	83 (98.8%)	0.62 [‡]
Macrolide	98 (70.0%)	93 (87.7%)	0.001 [‡]	64 (76.2%)	75 (89.3%)	0.025 [‡]
Others	21 (15.0%)	7 (6.6%)	0.04 [‡]	15 (17.9%)	6 (7.1%)	0.036 [‡]
No. (%) under antiviral therapy	106 (75.7%)	88 (83.0%)	0.16 [‡]	68 (81.0%)	68 (81.0%)	1 [‡]
Hydroxychloroquine	100 (71.4%)	88 (83.0%)	0.034 [‡]	62 (73.8%)	68 (81.0%)	0.27 [‡]
Lopinavir/ritonavir	8 (5.7%)	1 (0.9%)	0.08 [‡]	8 (9.5%)	1 (1.2%)	0.03 [‡]
Immunosuppressants and/or corticosteroids	47 (33.6%)	43 (40.6%)	0.26 [‡]	24 (28.6%)	26 (31.0%)	0.74 [‡]
Baricitinib	18 (12.9%)	1 (0.9%)	0.001 [‡]	0 (0.0%)	1 (1.2%)	1 [‡]
Characteristics at hospital admission						
Delay between first symptoms and admission, mean±SD, days	5.4±8.8	4.8±15.3	0.74 [*]	5.2±9.8	6.5±4.9	0.29 [*]
SpO ₂ /FiO ₂ ratio, mean±SD	327.4±108.7	338.4±88.6	0.39 [‡]	330.3±108.6	341.8±87.1	0.45 [‡]
SpO ₂ , mean±SD, %	93.9±3.6	94.0±3.9	0.81 [‡]	94.0±3.6	94.2±3.3	0.62 [‡]
Oxygen flow, mean±SD, L/min	4.0±4.8	3.1±3.6	0.44 [‡]	3.9±4.6	3.0±3.3	0.54 [‡]
PaO ₂ , mean±SD, mmHg	70.4±24.7	68.6±17.5	0.54 [‡]	71.6±28.4	68.6±17.8	0.46 [*]
Temperature, mean±SD, °C	37.2±1.1	37.5±1.2	0.06 [‡]	37.3±1.1	37.5±1.2	0.22 [*]

C-reactive protein, mean \pm SD, mg/L	132.1 \pm 99.2	135.2 \pm 88.2	0.79 [*]	138.2 \pm 101.7	131.5 \pm 84.6	0.64 [*]
Lymphocyte count, mean \pm SD, mcl	1451.9 \pm 3320.1	1198.6 \pm 1095.7	0.40 [†]	1595.9 \pm 4290.1	1228.7 \pm 1204.0	0.46 [†]
Characteristics at study inclusion						
Delay between first symptoms and inclusion, mean \pm SD, days	8.4 \pm 4.7	8.3 \pm 4.2	0.82 [*]	8.4 \pm 4.8	8.6 \pm 4.2	0.84 [*]
Delay between admission and inclusion, mean \pm SD, days	3.0 \pm 8.0	3.5 \pm 14.6	0.28 [§]	3.2 \pm 8.5	2,2 \pm 3.3	0.61 [§]
SpO2/FiO2 ratio, mean \pm SD,	212.9 \pm 41.7	199.4 \pm 49.8	0.02[†]	210.9 \pm 41.9	206.5 \pm 48.7	0.53 [*]
SpO2, mean \pm SD, %	94.5 \pm 3.6	94.0 \pm 3.7	0.32 [*]	94.3 \pm 4.0	94.2 \pm 3.6	0.84 [*]
O2 flow support, mean \pm SD, l/min	8.4 \pm 3.4	9.9 \pm 5.3	0.03[§]	8.6 \pm 3.4	9,3 \pm 4.8	0.59 [§]
PaO2, mean \pm SD, mmHg	74.3 \pm 25.4	76.8 \pm 24.5	0.51 ^{&}	75.7 \pm 29.0	78.3 \pm 24.8	0.59 [*]
PaCO2, mean \pm SD, mmHg	36.0 \pm 9.1	35.9 \pm 7.7	0.93 [†]	36.3 \pm 9.0	35.6 \pm 7.6	0.63 [†]
Systolic blood pressure, mean \pm SD, mmHg	130.7 \pm 20.0	131.4 \pm 20.9	0.8 [‡]	131.3 \pm 21.2	130.8 \pm 20.3	0.9 [‡]
Temperature, mean \pm SD, °C	37.3 \pm 1.2	37.3 \pm 1.2	0.61 [§]	37.3 \pm 1.3	37.3 \pm 1.1	0.55 [§]
C-reactive protein, mean \pm SD, mg/L	144.9 \pm 100.7	168.0 \pm 95.0	0.07 [*]	150.8 \pm 105.1	163.7 \pm 97.9	0.42 [*]
Lymphocyte count, mean \pm SD, mcl	1224.0 \pm 2294.0	1128.4 \pm 1010.8	0.66 [§]	1278.8 \pm 2907.4	1168.8 \pm 1108.5	0.75 [§]
eGFR, mean \pm SD, ml/min/1,73m ²	72.6 \pm 34.7	152.2 \pm 701.9	0.25 [†]	75.2 \pm 34.5	171.8 \pm 788.2	0.27 [†]
Use non-invasive ventilation or high flow oxygenotherapy after inclusion	5 (3.6%)	8 (7.5%)	0.17	4 (4.8%)	4 (4.8%)	1.0

237

238

239

240

241

242

243

Data are presented as number (percentage), unless otherwise noted. Comparison methods were noted: * for Student; † for Chi-2; ‡ for Fischer and § for Mann-Whitney test. Significant intergroup differences are in bold.

Abbreviations: O2: oxygen; ACEI: angiotensin conversion enzyme inhibitor; ARB: angiotensin II receptor blocker; BMI: body-mass index; eGFR: estimated glomerular filtration rate by modification of diet in renal disease (MDRD) formula; FiO2: fraction of inspired oxygen; HIV: human immunodeficiency virus; IQR: interquartile range; SpO2: pulse oximetry O2 saturation

244 **Figure 1. Survival curves, regarding the primary outcome with a 28-days follow-up,**
245 **comparing tocilizumab and control group.**

246 In the matched cohort (n=168), tocilizumab was associated with fewer events (hazard ratio
247 (HR)=0.49 (95% confidence interval(95%CI)=0.30-0.81), p=0.005). In the overall cohort
248 (n=246), Cox multivariable survival analysis found tocilizumab independently associated with
249 a lower incidence of the primary outcome (adjusted HR =0.34 (95%CI=0.22-0.52), p<0.0001).
250 Inverse probability score-weighted analysis yielded similar results (p<0.0001).
251

252

253 **Figure 2. Survival curves, regarding mortality with a 28-days follow-up, comparing**
254 **tocilizumab and control group.**

255 In the matched cohort (n=168), tocilizumab was associated with fewer deaths (hazard
256 ratio=0.42 (95CI=0.22-0.82), p=0.008). In the overall cohort (n=246), Cox multivariable
257 analysis yielded an independent protective association between tocilizumab and mortality
258 (adjusted HR=0.29 (95%CI=0.17-0.53), p<0.0001). Inverse probability score-weighted analysis
259 yielded similar results (p<0.0001).

260

261 **REFERENCES**

- 262 1. Spiteri G, Fielding J, Diercke M, Campese C, Enouf V, Gaymard A, Bella A, Sognamiglio P,
263 Sierra Moros MJ, Riutort AN, Demina YV, Mahieu R, Broas M, Bengnér M, Buda S,
264 Schilling J, Filleul L, Lepoutre A, Saura C, Mailles A, Levy-Bruhl D, Coignard B, Bernard-
265 Stoecklin S, Behillil S, van der Werf S, Valette M, Lina B, Riccardo F, Nicastrì E, Casas I,
266 Larrauri A, Salom Castell M, Pozo F, Maksyutov RA, Martin C, Van Ranst M, Bossuyt
267 N, Siira L, Sane J, Tegmark-Wisell K, Palmérus M, Broberg EK, Beauté J, Jorgensen P,
268 Bundle N, Pereyaslov D, Adlhoch C, Pukkila J, Pebody R, Olsen S, Ciancio BC. First
269 cases of coronavirus disease 2019 (COVID-19) in the WHO European Region, 24
270 January to 21 February 2020. *Euro surveillance : bulletin Europeen sur les maladies*
271 *transmissibles = European communicable disease bulletin* 2020; 25.
- 272 2. Grasselli G, Zangrillo A, Zanella A, Antonelli M, Cabrini L, Castelli A, Cereda D, Coluccello A,
273 Foti G, Fumagalli R, Iotti G, Latronico N, Lorini L, Merler S, Natalini G, Piatti A, Ranieri
274 MV, Scandroglio AM, Storti E, Cecconi M, Pesenti A. Baseline Characteristics and
275 Outcomes of 1591 Patients Infected With SARS-CoV-2 Admitted to ICUs of the
276 Lombardy Region, Italy. *Jama* 2020.
- 277 3. Mehta P, McAuley DF, Brown M, Sanchez E, Tattersall RS, Manson JJ. COVID-19: consider
278 cytokine storm syndromes and immunosuppression. *Lancet (London, England)* 2020;
279 395: 1033-1034.
- 280 4. Le RQ, Li L, Yuan W, Shord SS, Nie L, Habtemariam BA, Przepiorka D, Farrell AT, Pazdur R.
281 FDA Approval Summary: Tocilizumab for Treatment of Chimeric Antigen Receptor T
282 Cell-Induced Severe or Life-Threatening Cytokine Release Syndrome. *The oncologist*
283 2018; 23: 943-947.
- 284 5. Liu B, Li M, Zhou Z, Guan X, Xiang Y. Can we use interleukin-6 (IL-6) blockade for
285 coronavirus disease 2019 (COVID-19)-induced cytokine release syndrome (CRS)?
286 *Journal of autoimmunity* 2020: 102452.
- 287 6. Zhang C, Wu Z, Li JW, Zhao H, Wang GQ. The cytokine release syndrome (CRS) of severe
288 COVID-19 and Interleukin-6 receptor (IL-6R) antagonist Tocilizumab may be the key
289 to reduce the mortality. *International journal of antimicrobial agents* 2020: 105954.
- 290 7. Rubin GD, Ryerson CJ, Haramati LB, Sverzellati N, Kanne JP, Raoof S, Schluger NW, Volpi A,
291 Yim JJ, Martin IBK, Anderson DJ, Kong C, Altes T, Bush A, Desai SR, Goldin J, Goo JM,
292 Humbert M, Inoue Y, Kauczor HU, Luo F, Mazzone PJ, Prokop M, Remy-Jardin M,
293 Richeldi L, Schaefer-Prokop CM, Tomiyama N, Wells AU, Leung AN. The Role of Chest
294 Imaging in Patient Management during the COVID-19 Pandemic: A Multinational
295 Consensus Statement from the Fleischner Society. *Chest* 2020.
- 296 8. Lunceford JK, Davidian M. Stratification and weighting via the propensity score in
297 estimation of causal treatment effects: a comparative study. *Statistics in medicine*
298 2004; 23: 2937-2960.
- 299 9. Austin PC, Stuart EA. The performance of inverse probability of treatment weighting and
300 full matching on the propensity score in the presence of model misspecification
301 when estimating the effect of treatment on survival outcomes. *Statistical methods in*
302 *medical research* 2017; 26: 1654-1670.
- 303 10. Richardson S, Hirsch JS, Narasimhan M, Crawford JM, McGinn T, Davidson KW, Barnaby
304 DP, Becker LB, Chelico JD, Cohen SL, Cookingham J, Coppa K, Diefenbach MA,
305 Dominello AJ, Duer-Hefele J, Falzon L, Gitlin J, Hajizadeh N, Harvin TG, Hirschwerk DA,
306 Kim EJ, Kozel ZM, Marrast LM, Mogavero JN, Osorio GA, Qiu M, Zanos TP. Presenting

- 307 Characteristics, Comorbidities, and Outcomes Among 5700 Patients Hospitalized
308 With COVID-19 in the New York City Area. *Jama* 2020.
- 309 11. Han Y, Liu Y, Zhou L, Chen E, Liu P, Pan X, Lu Y. Epidemiological Assessment of Imported
310 Coronavirus Disease 2019 (COVID-19) Cases in the Most Affected City Outside of
311 Hubei Province, Wenzhou, China. *JAMA Network Open* 2020; 3: e206785-e206785.
- 312 12. Huet T, Beaussier H, Voisin O, Jouveshomme S, Dauriat G, Lazareth I, Sacco E, Naccache J-
313 M, Bézie Y, Laplanche S, Le Berre A, Le Pavec J, Salmeron S, Emmerich J, Mourad J-J,
314 Chatellier G, Hayem G. Anakinra for severe forms of COVID-19: a cohort study. *The*
315 *Lancet Rheumatology*.
- 316 13. Toniati P, Piva S, Cattalini M, Garrafa E, Regola F, Castelli F, Franceschini F, Airò P, Bazzani
317 C, Beindorf EA, Berlendis M, Bezzi M, Bossini N, Castellano M, Cattaneo S, Cavazzana
318 I, Contessi GB, Crippa M, Delbarba A, De Peri E, Faletti A, Filippini M, Filippini M,
319 Frassi M, Gaggiotti M, Gorla R, Lanspa M, Lorenzotti S, Marino R, Maroldi R, Metra M,
320 Matteelli A, Modena D, Moioli G, Montani G, Muiasan ML, Odolini S, Peli E, Pesenti S,
321 Pezzoli MC, Pirola I, Pozzi A, Proto A, Rasulo FA, Renisi G, Ricci C, Rizzoni D, Romanelli
322 G, Rossi M, Salvetti M, Scolari F, Signorini L, Taglietti M, Tomasoni G, Tomasoni LR,
323 Turla F, Valsecchi A, Zani D, Zuccalà F, Zunica F, Focà E, Andreoli L, Latronico N.
324 Tocilizumab for the treatment of severe COVID-19 pneumonia with
325 hyperinflammatory syndrome and acute respiratory failure: A single center study of
326 100 patients in Brescia, Italy. *Autoimmunity reviews* 2020: 102568.
- 327 14. CORIMUNO-19 - Tocilizumab trial - TOCI (CORIMUNO-TOCI). 2020.
- 328 15. A Study to Evaluate the Safety and Efficacy of Tocilizumab in Patients With Severe
329 COVID-19 Pneumonia (COVACTA). 2020.
- 330 16. Chiu Y, Ostor AJ, Hammond A, Sokoll K, Anderson M, Buch M, Ehrenstein MR, Gordon P,
331 Steer S, Bruce IN. Access to the next wave of biologic therapies (Abatacept and
332 Tocilizumab) for the treatment of rheumatoid arthritis in England and Wales:
333 addressing treatment outside the current NICE guidance. *Clinical rheumatology* 2012;
334 31: 1005-1012.
- 335 17. Bilan N, Dastranji A, Ghalehbolab Behbahani A. Comparison of the spo2/fio2 ratio and
336 the pao2/fio2 ratio in patients with acute lung injury or acute respiratory distress
337 syndrome. *Journal of cardiovascular and thoracic research* 2015; 7: 28-31.
- 338

Survival without mechanical ventilation (%)

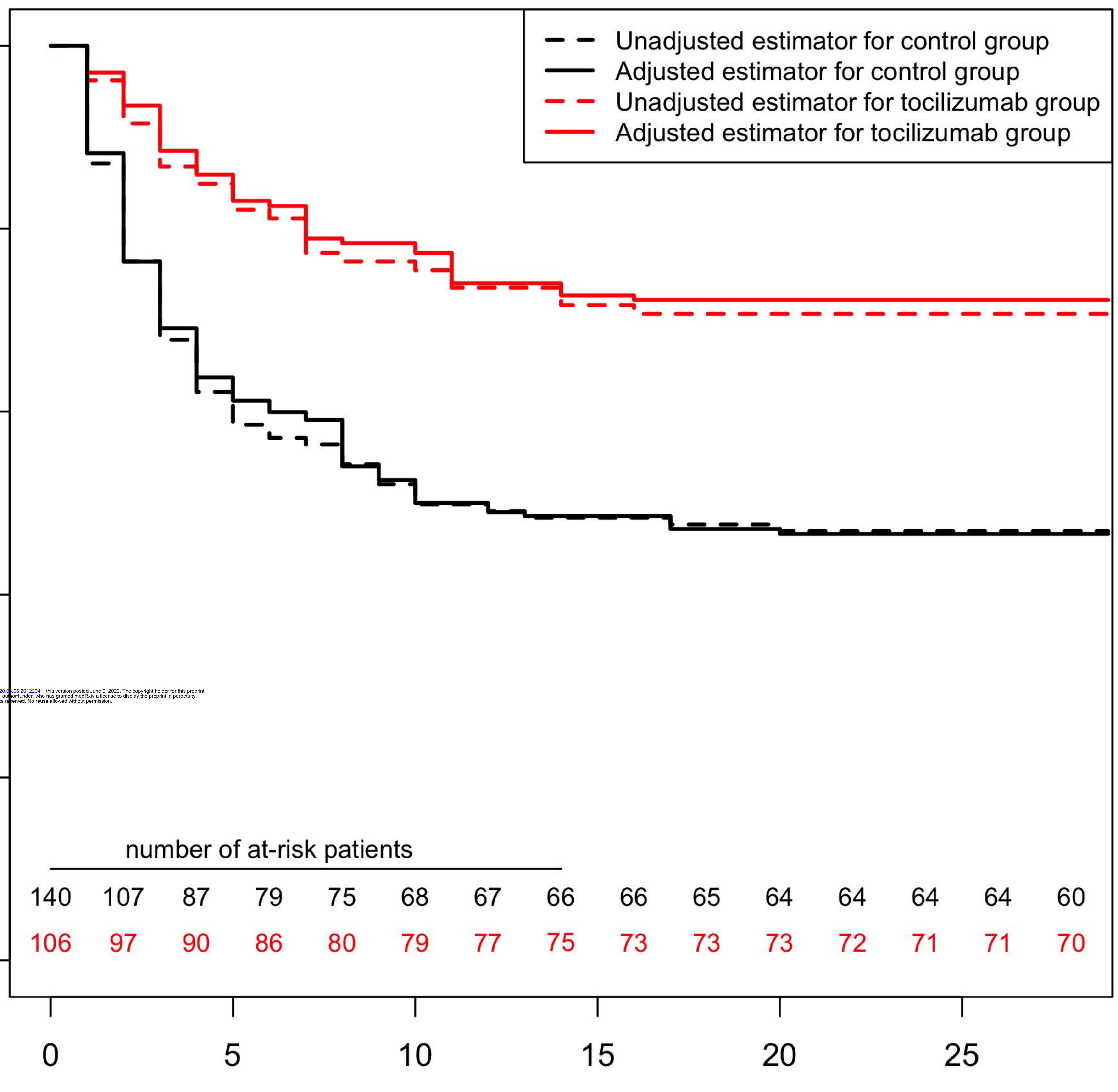
- - Unadjusted estimator for control group
- Adjusted estimator for control group
- - Unadjusted estimator for tocilizumab group
- Adjusted estimator for tocilizumab group

medRxiv preprint doi: <https://doi.org/10.1101/2020.06.20122341>; this version posted June 9, 2020. The copyright holder for this preprint (which was not certified by peer review) is the author/funder, who has granted medRxiv a license to display the preprint in perpetuity. All rights reserved. No reuse allowed without permission.

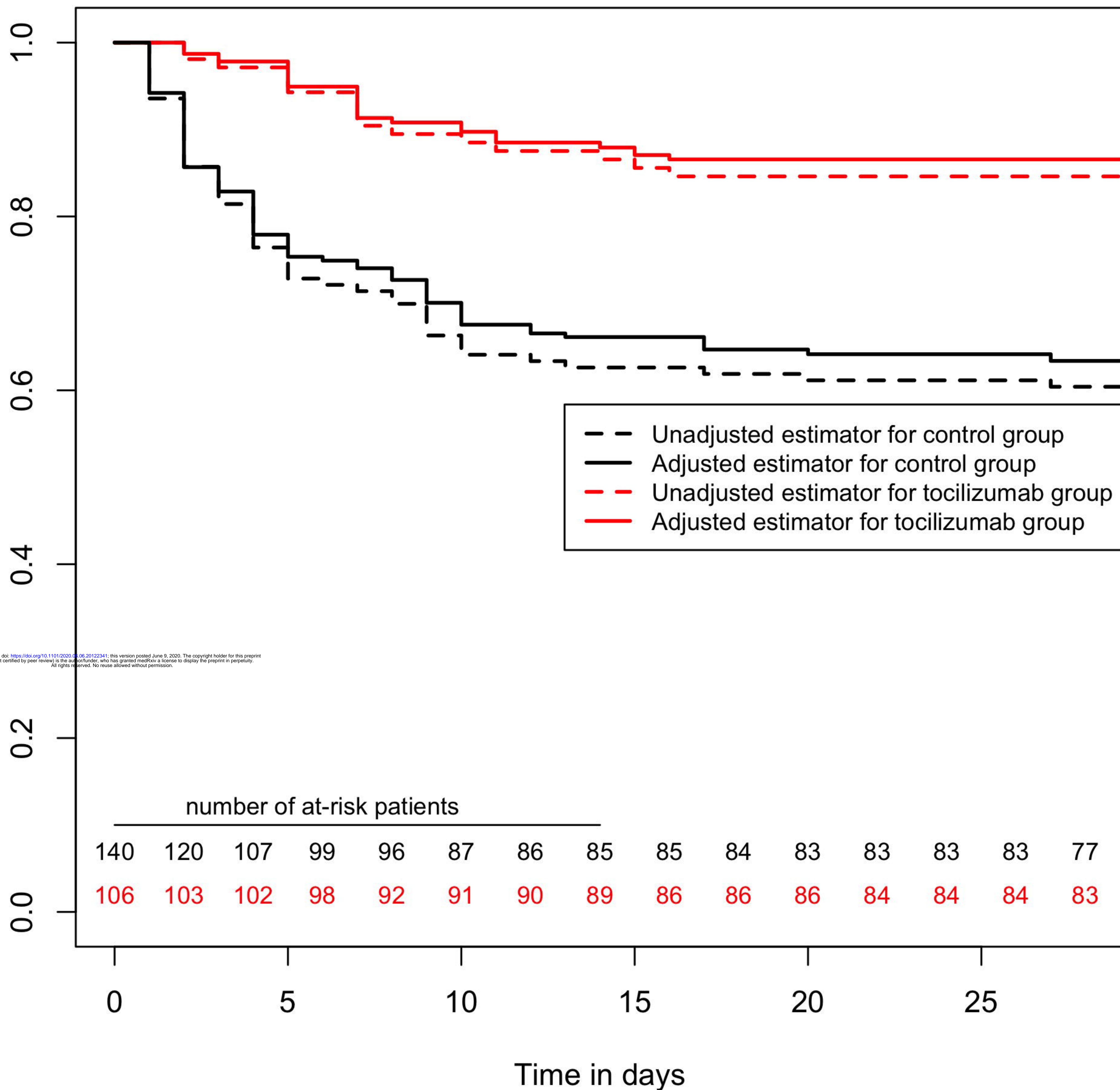
number of at-risk patients

140	107	87	79	75	68	67	66	66	65	64	64	64	64	60
106	97	90	86	80	79	77	75	73	73	73	72	71	71	70

Time in days



Overall survival (%)



medRxiv preprint doi: <https://doi.org/10.1101/2020.06.06.20122341>; this version posted June 9, 2020. The copyright holder for this preprint (which was not certified by peer review) is the author/funder, who has granted medRxiv a license to display the preprint in perpetuity. All rights reserved. No reuse allowed without permission.