

1 **Tocilizumab is associated with reduced risk of ICU admission and mortality in**
2 **patients with SARS-CoV-2 infection**

3 Estela Moreno-García, M.D.*¹; Verónica Rico, M.D.*¹; Laia Albiach, M.D.¹; Daiana
4 Agüero, M.D.¹; Juan Ambrosioni, M.D., Ph.D.¹; Marta Bodro, M.D., Ph.D.¹; Celia
5 Cardozo, M.D.¹; Mariana Chumbita, M.D.¹; Lorena De la Mora, M.D.¹; Nicole García-
6 Pouton, M.D.¹; Carolina Garcia-Vidal, M.D., Ph.D.¹, Ana González-Cordón, M.D.,
7 Ph.D.¹; Marta Hernández-Meneses, M.D.¹; Alexy Inciarte, M.D.¹; Montse Laguno,
8 M.D., Ph.D.¹; Lorna Leal, M.D., Ph.D.¹; Laura Linares, M.D.¹; Irene Macaya, M.D.¹;
9 Fernanda Meira, M.D.¹; Josep Mensa, M.D.¹; Antonio Moreno, M.D.¹; Laura Morata,
10 M.D., Ph.D.¹; Pedro Puerta-Alcalde, M.D., Ph.D.¹; Jhon Rojas, M.D., Ph.D.¹; Montse
11 Solá¹; Berta Torres, M.D., Ph.D.¹; Manuel Torres, M.D.¹; Adrià Tomé, M.D.¹; Pedro
12 Castro, M.D., Ph.D.²; Sara Fernández, M.D.²; Josep Maria Nicolás, M.D., Ph.D.²; Alex
13 Almuedo-Riera, M.D.³; Jose Muñoz, M.D., Ph.D.³; Mariana Jose Fernandez-Pittol,
14 M.D.⁴; Maria Angeles Marcos, M.D., Ph.D.⁴; Dolors Soy, M.D., Ph.D.⁵; José Antonio
15 Martínez, M.D., Ph.D.¹; Felipe García, M.D., Ph.D.¹, and Alex Soriano, M.D., Ph.D.^{†1}.

16

17 * both authors contributed equally to this manuscript.

18

19 ¹Department of Infectious Diseases, Hospital Clínic-Universitat de Barcelona,
20 IDIBAPS, Barcelona, Spain.

21 ²Medical Intensive Care Unit, Hospital Clínic-Universitat de Barcelona, IDIBAPS,
22 Barcelona, Spain.

23 ³ Department of International Health, ISGlobal, Barcelona Centre for International
24 Health Research (CRESIB), Hospital Clínic-Universitat de Barcelona, Barcelona,
25 Spain.

NOTE: This preprint reports new research that has not been certified by peer review and should not be used to guide clinical practice.

26 ⁴Department of Microbiology, Hospital Clínic-Universitat de Barcelona, IDIBAPS,
27 Barcelona, Spain.

28 ⁵Department of Pharmacology, Hospital Clínic-Universitat de Barcelona, IDIBAPS,
29 Barcelona, Spain.

30

31 †**Corresponding author:**

32 Alex Soriano, M.D. Ph.D.

33 Department of Infectious Diseases, Hospital Clínic of Barcelona.

34 Carrer de Villarroel 170, 08036, Barcelona, Spain

35 Phone +34 932 275 400; ext.2887

36 E-mail: asoriano@clinic.cat

37

38 **Funding:** There are none funding or conflicts of interest to declare.

39

40 **Word count:** 1953

41 **Abstract**

42 Background

43 In some patients the immune response triggered by SARS-CoV-2 is unbalanced,
44 presenting an acute respiratory distress syndrome which in many cases requires
45 intensive care unit (ICU) admission. The limitation of ICU beds has been one of the
46 major burdens in the management worldwide; therefore, clinical strategies to avoid ICU
47 admission are needed.

48

49 Objective

50 We aimed to describe the influence of tocilizumab on the need of transfer to ICU or
51 death in non-critically ill patients.

52

53 Methods

54 A retrospective study of 171 patients with SARS-CoV-2 infection that did not qualify as
55 requiring transfer to ICU during the first 24h after admission to a conventional ward,
56 were included. The criteria to receive tocilizumab was radiological impairment, oxygen
57 demand or an increasing of inflammatory parameters, however, the ultimate decision
58 was left to the attending physician judgement. The primary outcome was the need of
59 ICU admission or death whichever came first.

60

61 Results

62 77 patients received tocilizumab and 94 did not. The tocilizumab group had less ICU
63 admissions (10.3% vs. 27.6%, $P=0.005$) and need of invasive ventilation (0 vs 13.8%,
64 $P=0.001$). In multivariable analysis, tocilizumab remained as a protective variable (OR:
65 0.03, CI 95%: 0.007-0.1, $P=0.0001$) of ICU admission or death.

66 Conclusion

67 Tocilizumab in the early stages of the inflammatory flare, could reduce ICU admissions
68 and mechanical ventilation use. The mortality rate of 10.3% among patients receiving
69 tocilizumab appears to be lower than other reports.

70

71 **Clinical implication**

72 Our results suggest that tocilizumab administered to non-critically ill patients could
73 reduce ICU admissions and mortality.

74

75 **Capsule summary:** Tocilizumab administered to non-critically ill patients with SARS-
76 CoV-2 infection in the early stages of the inflammatory flare, could reduce an important
77 number of ICU admissions and mechanical ventilation use.

78

79

80 **Key words:** SARS-CoV-2 infection, COVID-19, tocilizumab, IL-6 inhibition, acute
81 respiratory distress syndrome (ARDS).

82

83

84 **Abbreviations:**

85 ALS: Advanced Life Support

86 ARDS: Acute Respiratory Distress Syndrome

87 CRP: C-Reactive Protein

88 ICU: Intensive Care Unit

89 MV: mechanical ventilation

90 PCR: Polymerase Chain Reaction

91 PS: Propensity Score

92 SD: Standard Deviation

93

94 **Introduction**

95 Infection by Coronavirus 2 (SARS-CoV-2) emerged in December 2019 in Wuhan and
96 rapidly spread around the world. SARS-CoV-2 pneumonia evolves in 2 different
97 phases, the first one is characterized by a high viral replication and classical symptoms
98 of a respiratory virus infection, including fever, malaise, myalgia, and cough (1). About
99 80% of the patients control the infection within a week but 20% of them, after the first
100 7-8 days, develop a severe respiratory failure fulfilling the definition of acute
101 respiratory distress syndrome (ARDS) with many requiring intensive care management
102 (2). During the second week, the blood tests reveal lymphopenia, and high levels of C-
103 reactive protein (CRP), ferritin, and D-dimer values (1), all related with the activity of
104 different cytokines (IL-1beta, IL-2, IL-6, IL-8, IL-17, IFN-gamma or TNF-alpha) (3).
105 Therefore, the main therapeutic objective during the first week of treatment is to stop
106 the viral replication while in the second week blocking the tissue damage induced by
107 the cytokine storm is paramount (4).

108 In agreement with the immunopathogenesis, it has been proposed to treat patients
109 during the inflammatory flare with IL-6 inhibitors (5,6). The first description included
110 21 patients admitted to a Chinese hospital who received tocilizumab, a recombinant
111 humanized anti-IL-6 receptor monoclonal antibody. In a few days, symptoms improved
112 remarkably, 75% had lowered their oxygen intake and no patient died (7). More
113 recently, Sciascia and colleagues, have reported the results of a single-arm multicentre
114 study on off-label use of tocilizumab conducted in 63 Italian patients with a severe
115 SARS-CoV-2 infection. The administration of tocilizumab within 6 first days of
116 admission was associated with an increased likelihood of survival (HR 2.2 95% CI 1.3–
117 6.7, $p < 0.05$) (8).

118 On the other hand, 21 Italian patients received siltuximab, a chimeric monoclonal
119 antibody that binds to and blocks the effect of IL-6. The outcome showed that 33%
120 (7/21) of patients experienced an improvement in their condition with a reduced need
121 for ventilation, 43% (9/21) remained stable, and 24% (5/21) worsen and required
122 intubation. However, this article is included in a repository so not yet peer reviewed (9).
123 The main objective of the present article is to describe the putative influence of
124 tocilizumab on the prognosis, defined as eventual need of transfer to the ICU or death,
125 of 171 non-critically ill patients.

126

127 **Methods**

128 From February 19th to April 16th patients with respiratory symptoms and radiological
129 evidence of pneumonia (uni or bilateral interstitial infiltrates) and those with respiratory
130 symptoms without pneumonia but with co-morbidity (hypertension, diabetes mellitus,
131 cancer, chronic liver diseases, chronic obstructive pulmonary disease or
132 immunosuppression) were admitted to Hospital Clínic of Barcelona in the context of
133 SARS-CoV-2 pandemic. Definitive diagnostic was established by a positive polymerase
134 chain reaction (PCR) from a nasopharyngeal swab during the first two weeks of
135 pandemic but once the prevalence of positive tests was >70%, the diagnosis was based
136 on clinical criteria. Clinical criteria for defining a case of SARS-CoV-2 were the
137 presence of respiratory symptoms with uni or bilateral interstitial infiltrate in the chest-
138 X ray without evidence of other potential causes (e.g. heart failure). During the study
139 period, 171 patients that did not qualify as requiring transfer to the ICU during the first
140 24h after admission to a conventional hospital ward, were included.
141 For ARDS, the Berlin definition (10) was applied. When PaO₂ was not available,
142 SpO₂/FiO₂ ≤ 315 suggested ARDS (including in non-ventilated patients) (11).

143 The standard protocol included antiviral treatment that consisted of lopinavir/ritonavir
144 400/100 mg BID for 7-14 days plus hydroxychloroquine 400 mg/12h on the first day,
145 followed by 200 mg/12h for the next 4 days. From the 18th of March onwards,
146 azithromycin 500 mg the first day and 250 mg/24h for 4 additional days was added to
147 the regimen. In addition, a clinical trial with remdesivir was enrolling patients in our
148 institution during the study period. All patients with risk factors for thrombosis received
149 prophylactic doses of low molecular weight heparin (12). Intravenous
150 methylprednisolone was recommended for patients with disease progression to ARDS.
151 The local protocol suggested the use of tocilizumab for patients with pneumonia,
152 progressive respiratory failure (increasing fraction of inspired oxygen) and CRP \geq 8
153 mg/dL or ferritin \geq 800 ng/mL or lymphocyte count $<$ 800 cells/mm³. The dose was 400
154 mg/24h iv for patients with \leq 75 kg and 600 mg/24h iv for those with $>$ 75 kg with the
155 possibility to repeat the dose every 12h up to 3 doses in case of only partial response.
156 However, due to the lack of evidence to support its efficacy, the ultimate decision about
157 using tocilizumab was left to the judgement of the attending physician.
158 Patients with severe comorbidity and a life expectancy $<$ 6 months were considered no
159 tributary of advanced life support (ALS). The outcome variable was a composite of the
160 need of ICU admission or death whichever came first. The last revision of medical
161 charts was April 26th.

162 The Institutional Ethics Committee of the Hospital Clínic of Barcelona approved the
163 study and due to the nature of retrospective chart review, waived the need for inform
164 consent from individual patients (Comité Ètic d'Investigació Clínica; HCB/2020/0273).

165

166 **Statistical analysis**

167 Categorical variables were described using the absolute number and percentage and
168 continuous variables using the mean and standard deviation (SD). Categorical variables
169 were compared using a Chi-squared test or Fisher exact test when necessary, and means
170 by using the Student-t test. For multivariable analysis, variables with a P -value ≤ 0.2 in
171 the univariable analysis were subjected to further selection by using a backward logistic
172 regression procedure. Interactions between variables were explored. In order to reduce
173 the effect of selection bias, we estimate the propensity score (PS) to receive tocilizumab
174 as the predicted probability from a logistic regression model using tocilizumab as the
175 dependent variable. The PS was included in the multivariable analysis of the main
176 outcome. The calibration of the model was assessed by means of the Hosmer-
177 Lemeshow goodness-of-fit test. Statistical significance was defined as a two-tailed P
178 value <0.05 . The analysis was performed in SPSS version 23 (SPSS Inc., Chicago, IL).

179

180 **Results**

181 The cohort included 171 patients, of whom 77 received tocilizumab while staying in a
182 conventional ward and 94 did not, with a mean (SD) age of 61.5 (12.4) and 61.4 (16)
183 years, respectively. The proportion of males and the main comorbidities were similar
184 between both groups (Table 1). Patients in the tocilizumab group had more frequently
185 fever, pneumonia (interstitial infiltrate) and at day 1 they needed more often oxygen
186 therapy. C-reactive protein levels were significantly higher in the tocilizumab group
187 (9.7 mg/dL vs. 7.5 mg/dL, $P=0.04$) but other biological parameters were similar in both
188 groups. During patients' stay in a conventional ward, corticosteroid therapy was more
189 frequently administered in the tocilizumab group (50.6% vs. 27.7%, $P=0.002$). A total
190 of 26 patients were not candidates to ALS, 10 (12.9%) in the tocilizumab group and 16

191 (17%) among controls. The mean (SD) time from symptoms onset to hospital admission
192 in tocilizumab group was 6.5 (3.3) days while it was 5 (6.5) days in the control group.
193 The outcome of both groups, with >90% of patients discharged alive or dead, showed
194 that patients in the tocilizumab group had significantly less ICU admissions (10.3% vs.
195 27.6%, $P=0.005$) and less need of invasive ventilation (0 vs 13.8%, $P=0.001$) (Figure
196 1). The univariable analysis of our composite outcome (ICU admission or death
197 whichever came first) showed that comorbidities (hypertension, heart diseases and
198 lymphoma), the need of oxygen at day 1, a CRP > 16 mg/dL and the development of
199 cardiovascular, renal or respiratory (ARDS, invasive ventilation) complications were
200 significantly associated with the primary outcome. In contrast, tocilizumab was the only
201 one protective variable (Table 2). In the multivariable analysis, including the PS
202 estimate to receive tocilizumab as a potential confounder, tocilizumab remained as a
203 strong protective variable (OR: 0.03, CI 95%: 0.007-0.1, $P=0.0001$) of ICU admission
204 or death (Table 3).

205

206 **Discussion**

207 Monoclonal antibodies directed against key inflammatory cytokines represent a class of
208 potential adjunctive therapies for SARS-CoV-2 infected patients. The rationale for their
209 use is that the underlying pathophysiology of significant lung damage is caused by a
210 cytokine storm being IL-6 one of the main drivers. Therefore, monoclonal antibodies
211 against IL-6 or its receptor could theoretically improve clinical outcomes mainly by
212 reducing the need of ICU admission and consequently the associated mortality.
213 Tocilizumab, a monoclonal antibody IL-6 receptor antagonist, was administered to 77
214 patients admitted to a conventional ward in our hospital and the outcome was compared
215 with 94 patients also admitted in a conventional ward during the same period of time

216 that did not receive tocilizumab. Although this study was not randomized, the
217 characteristics of both groups did not differ in terms of demographics and comorbidities
218 Moreover, the tocilizumab group had more severe infection (pneumonia, need of
219 oxygen at day 1 or higher CRP). Furthermore, all the patients were evaluated during the
220 same period of time so the same criteria for being transferred to the ICU was applied.
221 After adjusting for potential confounders, including the PS for receiving tocilizumab,
222 the multivariable analysis revealed that tocilizumab was an independent factor
223 associated with a reduction in the need of ICU admission and death. The need of ICU in
224 the tocilizumab group was almost 3 times lower (10.3% vs. 27.6%) than in controls and
225 it was lower than the one reported in Wuhan hospitals (26%) (1,13) or more recently in
226 New York (14%) (14). The availability of ICU beds is critical for the management of
227 patients that develop a severe ARDS in few hours, therefore, reducing the need of ICU
228 beds using tocilizumab impacted directly not only on the outcome of patients that
229 received the treatment but also of those that not receiving tocilizumab or arriving too
230 late in a critically ill condition had more chances of being admitted in the ICU. In line
231 with this, the mortality of our cohort, including patients not candidates to ALS, was
232 14.2% which seems lower than that showed in previous reports, regularly >20%
233 (1,13,15). Indeed, the mortality rate of patients in the tocilizumab group was 10% that is
234 comparable to the one recently reported with remdesivir (15) in 53 patients (13%).
235 Although from the beginning of the pandemic tocilizumab was recommended in the
236 general protocol, the heterogeneity of its prescription could be explained by the lack of
237 clinical randomized trials supporting its usefulness.
238 Our results suggest that tocilizumab should be administered in early phases of the
239 inflammatory flare. It is reasonable to hypothesize that other strategies directed to
240 inhibit other specific inflammatory pathways (including IL-1 with anakinra or INF-

241 gamma with JAK inhibitors), or a broad-spectrum inhibition with steroids with or
242 without therapeutic strategies to reduce the pro-coagulant status, could be also effective
243 (16-18). On the other hand, although in non-severe cases after one week from symptoms
244 onset the viral viability is significantly reduced, there is data supporting the continuous
245 viral replication in severe cases (19) that could be the trigger for the inflammatory flare
246 and its maintenance. In addition, different antiviral strategies (antiviral agents, plasma
247 from convalescent patients) have demonstrated benefit in severe patients, even >1 week
248 after symptoms onset (15, 20-21). Accordingly, we consider that antiviral agents should
249 be associated with immunomodulators (22), and this explains why almost 100% of our
250 cohort received it.

251 In conclusion, while waiting for the definitive results from clinical trials with
252 tocilizumab (NCT04310228, ChiCTR200002976), our findings support that the
253 administration of tocilizumab in the early stages of the inflammatory flare, particularly
254 before the need of ICU admission, is more convenient and could potentially avoid an
255 important number of ICU admissions and mechanical ventilation use. Consequently, the
256 mortality rate of 10.3% among patients receiving tocilizumab appears to be lower than
257 that described by others in previously published series (13,15,23). However, this is a
258 non-randomized study and, therefore, the results should be interpreted with caution.

259

260 **Acknowledgements**

261 Hospital Clinic of Barcelona COVID-19 Research Group:

262 Infectious Diseases' Research Group:

263 Blanco JL, Mallolas J, Martínez E, Martínez M, Miró JM, Moreno A, and all the staff
264 members.

265

266 Medical Intensive Care Unit:

267 Adrian Téllez, and all the staff members.

268

269 Department of International Health:

270 Daniel Camprubi Ferrer, Maria Teresa de Alba, Marc Fernandez, Elisabet Ferrer, Berta

271 Grau, Helena Marti, Magdalena Muelas, Maria Jesus Pinazo, Natalia Rodríguez,

272 Montserrat Roldan, Carme Subira, Isabel Vera, Nana Williams, Alex Almuedo-Riera,

273 Jose Muñoz, and all the staff members.

274

275 Department of Internal Medicine:

276 Aldea A, Camafort M, Calvo J, Capdevila A, Cardellach F, Carbonell I, Coloma E,

277 Foncillas A, Estruch R, Feliu M, Fernández-Solá J, Fuertes I, Gabara C, Grafia I,

278 Ladino A, López-Alfaro R, López-Soto A, Masanés F, Matas A, Navarro M, Marco-

279 Hernández J, Miguel L, Milisenda J, Moreno P, Naval J, Nicolás D, Oberoi H, Padrosa

280 J, Prieto-González S, Pellicé M, Ribot J, Rodríguez-Núñez O, Sacanella E, Seguí F,

281 Sierra C, Ugarte A, Ventosa H, Zamora-Martínez C, and all the staff members.

282

283 Department of Microbiology:

284 Almela M, Alvarez M, Bosch J, Casals C, Costa J, Cuesta G, Fidalgo B, González J,

285 Hurtado JC, Marco F, Martínez M, Mosquera M, Narvaez S, Pitart C, Rubio E, Vergara

286 A, Valls ME, Vila J, Zboromyrska Y and all the staff members.

287

288 Department of Farmacy:

289 López E, Tuset M and all the staff members.

290

291 Department of Autoimmune diseases:
292 Espigol G, Espinona G and all the staff members.
293

294 **References**

- 295 1. Zhou F, Yu T, Du R, et al. Clinical Course and Risk Factors for Mortality of
296 Adult Inpatients With COVID-19 in Wuhan, China: A Retrospective Cohort
297 Study. *Lancet* 2020; 395: 1054–62. DOI: 10.1016/S0140-6736(20)30566-3.
- 298 2. Grasselli G, Zangrillo A, Zanella A, et al. Baseline Characteristics and
299 Outcomes of 1591 Patients Infected With SARS-CoV-2 Admitted to ICUs of the
300 Lombardy Region, Italy. *JAMA* 2020. April 6. (Epub ahead of print)
301 DOI:10.1001/jama.2020.5394.
- 302 3. McGonagle D, Sharif K, O'Regan A, et Bridgewood C. The Role of Cytokines
303 including Interleukin-6 in COVID-19 induced Pneumonia and Macrophage
304 Activation Syndrome-Like Disease. *Autoimmunity Reviews* 2020. April 3.
305 (Epub ahead of print). DOI: 10.1016/j.autrev.2020.102537.
- 306 4. Siddiqi HK, Mandeep RM. COVID-19 Illness in Native and Immunosuppressed
307 States: A Clinical-Therapeutic Staging Proposal. *J Heart and Lung Transpl*
308 2020. DOI: 10.1016/j.healun.2020.03.012.
- 309 5. Zhang C, Wu Z, Li JW, Zhao H and Wang GQ. The cytokine release syndrome
310 (CRS) of severe COVID-19 and Interleukin-6 receptor (IL-6R) antagonist
311 Tocilizumab may be the key to reduce the mortality. *Int J Antimicrob Agents*
312 2020. March 29. (Epub ahead of print). DOI: 10.1016/j.ijantimicag.2020.105954
- 313 6. Moore JB, June CH. Cytokine release syndrome in severe COVID-19. *Science*
314 2020. April 17. (Epub ahead of print). DOI: 10.1126/science.abb8925.
- 315 7. Xu X, Han M, Li T, Sun W, Wang D, Fu B, et al. Effective Treatment of Severe
316 COVID-19 Patients with Tocilizumab. *Proc Natl Acad Sci U S A*. 2020. April
317 29 (Epub ahead of print). PMID: 32350134.

- 318 8. Sciascia S, Apra F, Baffa A et al. Pilot Prospective Open, Single-Arm
319 Multicentre Study on Off-Label Use of Tocilizumab in Patients With Severe
320 COVID-19. *Clin Exp Rheumatol* 2020. May 1. (Epub ahead of print). PMID:
321 32359035
- 322 9. Gritti G, Raimondi F, Ripamonti D, et al. Use of siltuximab in patients with
323 COVID-19 pneumonia requiring ventilatory support. *MedRxiv* 2020.
324 DOI:10.1101/2020.04.01.20048561.
- 325 10. ARDS Definition Task Force, Ranieri VM, Rubenfeld GD, Thompson BT,
326 Ferguson ND, Caldwell E, Fan E, Camporota L, Slutsky AS. Acute respiratory
327 distress syndrome: the Berlin Definition. *JAMA*. 2012 Jun 20;307(23):2526-33.
328 doi: 10.1001/jama.2012.5669.
- 329 11. Rice TW, Wheeler AP, Bernard GR, Hayden DL, Schoenfeld DA et Ware LB.
330 Comparison of the SpO₂/FIO₂ ratio and the PaO₂/FIO₂ ratio in patients with
331 acute lung injury or ARDS. *Chest*. 2007;132(2):410–417.
332 DOI:10.1378/chest.07-0617.
- 333 12. Bikdeli B, Madhavan MV, Jimenez D, et al. COVID-19 and Thrombotic or
334 Thromboembolic Disease: Implications for Prevention, Antithrombotic Therapy,
335 and Follow-up. *J Am Coll Cardiol* 2020. April 15. (Epub ahead of print). DOI:
336 10.1016/j.jacc.2020.04.031.
- 337 13. Wu C, Chen X, Cai Y et al. Risk Factors Associated With Acute Respiratory
338 Distress Syndrome and Death in Patients With Coronavirus Disease 2019
339 Pneumonia in Wuhan, China. *JAMA Intern Med* 2020. March, 13. (Epub ahead
340 of print). DOI:10.1001/jamainternmed.2020.0994.
- 341 14. Richardson S, Hirsch JS, Narasimhan M, et al. Presenting Characteristics,
342 Comorbidities, and Outcomes Among 5700 Patients Hospitalized With COVID-

- 343 19 in the New York City Area. JAMA 2020. April 22 (Epub ahead of print).
344 DOI: 10.1001/jama.2020.6775.
- 345 15. Grein J, Ohmagari N, Shin D, et al. Compassionate Use of Remdesivir for
346 Patients with Severe Covid-19. N Engl J Med 2020. April,10. (Epub ahead of
347 print). DOI: 10.1056/NEJMoa2007016.
- 348 16. Cavalli G, De Luca G, Campochiaro C et al. Interleukin-1 blockade with high-
349 dose anakinra in patients with COVID-19, acute respiratory distress syndrome,
350 and hyperinflammation: a retrospective cohort study. Lancet Rheumatol 2020.
351 May 7. (Epub ahead of print) DOI: 10.1016/S2665-9913(20)30127-2
- 352 17. Ingraham NE, Lofti-Emran S, Thielen BE et al. Immunomodulation in COVID-
353 19. Lancet Respir Med 2020. May 4. DOI: 10.1016/ S2213-2600(20)30226-5.
- 354 18. Stebbing J, Phelan A, Griffin I, et al. COVID-19: combining antiviral and anti-
355 inflammatory treatments. Lancet Infect Dis. 2020;20(4):400-402. DOI:
356 10.1016/S1473-3099(20)30132-8.
- 357 19. Lin A, He ZB, Zhang S, Zhang JG, Zhang X, Yan WH. Early risk factors for the
358 duration of SARS-CoV-2 viral positivity in COVID-19 patients. Clin Infect Dis
359 2020. April 27. (Epub ahead of print). DOI: 10.1093/cid/ciaa490.
- 360 20. Shen C, Zhaoqin W, Zhao F et al. Treatment of 5 Critically Ill Patients With
361 COVID-19 With Convalescent Plasma. JAMA 2020. March, 27. (Epub ahead of
362 print). DOI: 10.1001/jama.2020.4783.
- 363 21. Roback JD, Guarner J. Convalescent Plasma to Treat COVID-19: Possibilities
364 and Challenges. JAMA 2020. March, 27. (Epub ahead of print).
365 DOI:10.1001/jama.2020.4940.

- 366 22. Sanders JM, Monogue ML, Jodlowski TZ, Cutrell JB. Pharmacologic
367 Treatments for Coronavirus Disease 2019 (COVID-19): A Review. JAMA
368 2020. April, 13. DOI:10.1001/jama.2020.6019.
- 369 23. Cao B, Wang Y, Wen D, et al. A Trial of Lopinavir–Ritonavir in Adults
370 Hospitalized with Severe Covid-19. N Engl J Med 2020. March, 18. (Epub
371 ahead of print) DOI:10.1056/NEJMoa2001282.
- 372

373 **Table 1. Characteristics and outcome of patients that received or did not received**
 374 **tocilizumab in a conventional ward.**

Variables	Tocilizumab group (N=77)	Control group (N=94)	P - value
Mean (SD) age in years	61.5 (12.4)	61.4 (16.0)	0.957
Age > 62 years old (%)	40 (52)	52 (55.3)	0.660
Male (%)	53 (68.8)	59 (62.7)	0.406
Comorbidities (%)			
Hypertension	35 (45.4)	43 (45.7)	0.960
Heart diseases	12 (15.5)	21 (22.3)	0.265
Chronic respiratory disease	8 (10.3)	12 (12.7)	0.630
Diabetes Mellitus	12 (15.6)	14 (15)	0.900
Mean (SD) days from symptoms onset to admission	6.5 (3.3)	5 (6.5)	0.061
Initial characteristics (%)			
Fever	86 (98.7)	80 (85)	0.002
Dyspnea	33 (43)	47 (50)	0.352
Cough	64 (83)	70 (74.5)	0.172
Normal chest x-ray at admission	3 (4)	14 (15)	0.017
Need of oxygen therapy at day 1	56 (72.7)	50 (53.8)	0.011
Positive PCR from a nasal swab	68 (88.3)	82 (87.2)	0.831
Laboratory at admission mean (SD)			
D-dimer (ng/mL) ¹	918.6 (1354.8)	1503.9 (2175.4)	0.100
Lymphocytes count (cell/mm ³)	878.9 (452.8)	910.1 (534.6)	0.686
C-Reactive protein (mg/dL) ²	9.7 (7.4)	7.5 (5.7)	0.044
Serum ferritin (ng/dL) ³	867.8 (871)	904.1 (809.9)	0.842
ARDS at any given time (%)	24 (31.1)	26 (27.6)	0.616
Treatments received (%)			
Antiviral agents ⁴	77 (100)	91(96.8)	0.164

Steroid prior ICU admission	39 (50.6)	26 (27.7)	0.002
Not candidate to ALS (%)	10 (12.9)	16 (17)	0.465
Mean (SD) days of follow up	11.2 (6.2)	14.7 (10.6)	0.027
Outcomes (%)			
Need of ICU	8 (10.3)	26 (27.6)	0.005
Need of no invasive MV	3 (3.9)	1 (1)	0.198
Need of invasive MV	-	13 (13.8)	0.001
Extubation	-	9 (9.6)	-
Discharge from ICU	5 (6.5)	21 (22.3)	-
Hospital discharged	65 (84.4)	71 (75.5)	0.152
Still in the hospital	4 (5.2)	6 (6.4)	0.503
Mortality (%)			
Global mortality	8 (10.3)	17 (18)	0.156
Mortality in:			
Not candidates to ALS	6 (60)	12 (75)	0.420
Candidates to ALS	2 (3)	5 (6.4)	0.337

375

376 PCR, polymerase chain reaction. ADRS, adult distress respiratory syndrome. ICU, intensive care unit.

377 ALS, advanced life support. MV, mechanical ventilation.

378 ¹ Measured in 110 patients.

379 ² Measured in 168 patients.

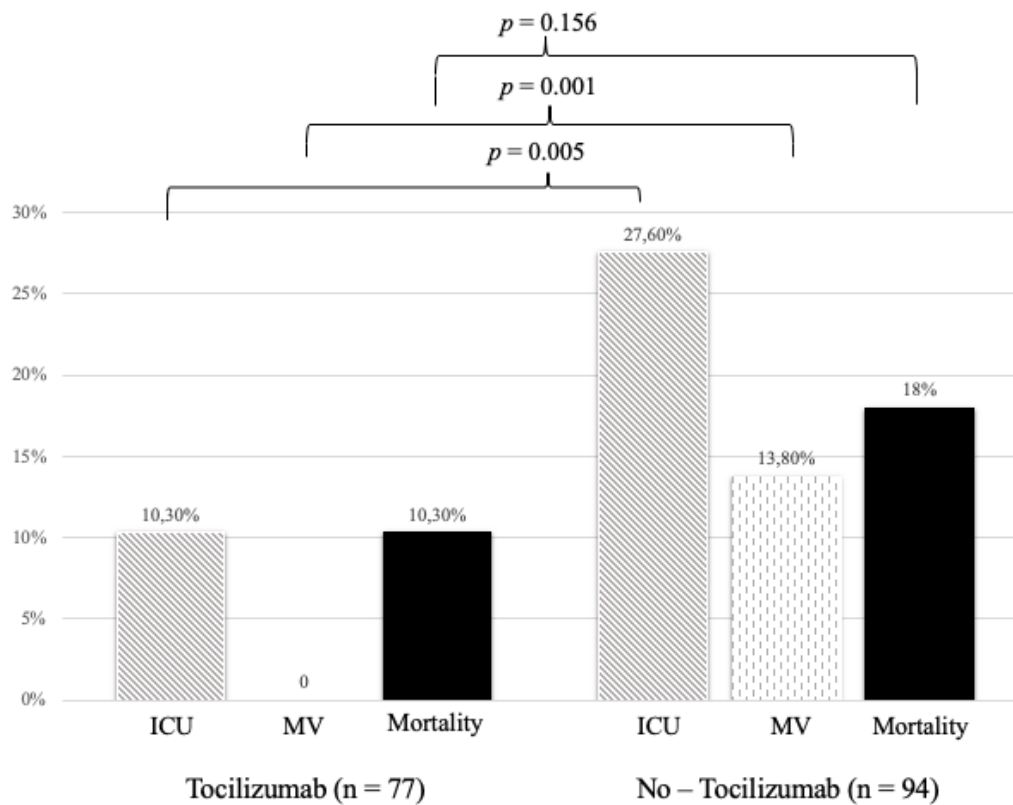
380 ³ Measured in 86 patients.

381 ⁴ see material and methods for antivirals used in our protocol.

382

383

384 **Figure 1. Differences between tocilizumab group and no-tocilizumab group in**
385 **terms of ICU admission, need of mechanical ventilation and mortality.**
386



387

388 ICU, Unit Care Unit. MV, Mechanical Ventilation.

389

390 **Table 2. Variables associated with ICU admission and/or death whichever came**
 391 **first.**

Variables	No ICU admission and/or death, N=121	ICU admission or death, N=50	P - value
Age >62 years (%)	57 (47)	35 (70)	0.006
Male sex (%)	77 (63.6)	35(70)	0.426
Mean (SD) follow-up, days	12 (8.347)	16.6 (9.858)	0.006
Comorbidities (%)	98 (81)	48 (96)	0.012
Hypertension	49 (40.5)	29 (58)	0.037
Diabetes Mellitus	20 (16.5)	6 (12)	0.453
Heart diseases	17 (14)	16 (32)	0.007
Chronic respiratory disease	11 (9)	9 (18)	0.099
Neoplasia	11(9)	6(12)	0.580
Dyslipemia	8 (6.6)	6 (12)	0.356
Lymphoma	2 (1.7)	5 (10)	0.012
Solid organ transplantation	5 (4)	3 (6)	0.693
Human Immunodeficiency Virus	1(0.8)	-	1
Mean (SD) days from symptoms onset to admission	5.98 (6.124)	4.86 (3.084)	0.223
Initial characteristics (%)			
Fever	112(92.6)	44 (88)	0.337
Dyspnoea	59 (48.8)	21 (42)	0.420
Cough	98 (81)	36 (72)	0.222
Normal chest x-ray at admission	12 (10)	5 (10)	0.987
Need of oxygen therapy at day 1	68 (56.7)	38 (76)	0.018
Positive PCR from nasal swab	105 (86.8)	45 (90)	0.559
Laboratory at admission (%)			
Lymphocytes count ¹ <700 cell/mm ³	36 (29.8)	18 (36)	0.424

C-Reactive protein ² >9 mg/dL	39 (32.5)	20 (41.7)	0.261
C-Reactive protein ² >16 mg/dL	23 (19)	25 (50)	0.0001
Treatments received (%)			
Antiviral agents	118 (97.5)	50 (100)	0.261
Steroids prior ICU admission	44 (36.4)	21 (42)	0.490
Tocilizumab	65 (53.7)	12 (24)	<0.0001
Complications (%)			
Cardiovascular	5 (4)	13 (7.6)	0.012
ARDS in the conventional ward	14 (11.6)	30 (60)	0.0001
Acute Kidney Injury	3 (1.8)	12 (24)	0.0001
Invasive ventilation	-	13 (26)	0.0001
Not candidate to ALS	8 (6.6)	18 (36)	0.0001

392

393 PCR, polymerase chain reaction. ICU, intensive care unit. ADRS, adult distress respiratory syndrome.

394 ALS, advanced life support.

395 ¹ Measured in 110 patients.

396 ² Measured in 168 patients.

397 ³ See material and methods section for antivirals used in our protocol.

398

399 **Table 3. Variables significantly associated with the risk of being admitted in the ICU and/or death**
400 **in the multivariable analysis.**

401

Variables¹	Adjusted odd ratio (95% CI)	P - value
Lymphoma	16.7 (1.7-157.3)	0.01404
Heart disease	2.9 (0.9-9.4)	0.07405
Need of oxygen at day 1	3.4 (1.1-10.5)	0.03406
ARDS prior to ICU admission	50.7 (10.4-245.7)	0.000407
Not candidate to ALS	3.8 (1.2-11.7)	0.0408
Tocilizumab	0.03 (0.007-0.1)	0.000409

410

411 ARDS, Adult respiratory distress syndrome. ICU, intensive care unit. ALS, advanced life support.

412 ¹ Variables included in the analysis: age > 62 years, chronic respiratory disease, hypertension heart

413 disease, lymphoma, C-reactive protein >16 mg/dL, need of oxygen at day 1, cardiovascular

414 complications, ARDS in the conventional ward, not candidate to ALS, tocilizumab administration,

415 propensity score to receive tocilizumab. Acute kidney injury and invasive ventilation were complications

416 that occurred after being admitted in the ICU, therefore, they were not included for the main outcome

417 analysis since this include the need of being admitted in the ICU.

418