

Case Study: Using Facebook Data to Monitor Adherence to Stay-at-home Orders in Colorado and Utah

Ryan M. Layer
University of Colorado
1111 Engineering Drive
Boulder, CO 80309

ryan.layer@colorado.edu

Daniel B. Larremore

University of Colorado
1111 Engineering Drive
Boulder, CO 80309

daniel.larremore@colorado.edu

Bailey Fosdick
Colorado State University
117 Statistics Building
Fort Collins, CO 80523

bailey.fosdick@colostate.edu

Paul Doherty

National Alliance for Public Safety GIS
Foundation
5335 Wisconsin Avenue NW, Suite 440
Washington, DC 20015

pdoherty@publicsafetygis.org

Michael Bradshaw
University of Colorado
1111 Engineering Drive
Boulder, CO 80309

michael.bradshawiii@colorado.edu

ABSTRACT

In the absence of effective treatments or a vaccine, social distancing has been the only public health measure available to combat the COVID-19 pandemic to date. In the US, implementing this response has been left to state, county, and city officials, and many localities have issued some form of a stay-at-home order. Without existing tools and with limited resources, localities struggled to understand how their orders changed behavior. In response, several technology companies opened access to their users' location data. As part of the COVID-19 Data Mobility Data Network [2], we obtained access to Facebook User data and developed four key metrics and visualizations to monitor various aspects of adherence to stay at home orders. These metrics were carefully incorporated into static and interactive visualizations for dissemination to local officials.

All code is open source and freely available at <https://github.com/ryanlayer/COvid19>

Keywords

COVID-19, population density, social distancing.

1. INTRODUCTION

On March 24th, 2020, at 1800 MNT, our team started collecting data from Facebook Data for Good [1] that covers Utah and Colorado. For these regions, Facebook provides aggregated and anonymized user density data for 2km x 2km tiles at three time points per day (0200 MNT, 1000 MNT, and 1600 MNT) for the eight hours following the time point (Figures 1 and 2A). We also began collecting higher resolution data (0.6km x 0.6km tiles) for Boulder County, CO and the City and County of Denver, CO on March 30th and April 7th, respectively. To protect privacy, Facebook does not report density data for tiles with fewer than ten users. In addition to the current density data (crisis density), Facebook provides a baseline density for each tile and time point which is averaged over the same day and time periods during the 45 days before the start of data collection. Facebook Data for Good provides other types of mobility data, including movement between tiles, but the combination of Facebook's privacy policy and the prevalence of large rural and remote areas in Utah and Colorado

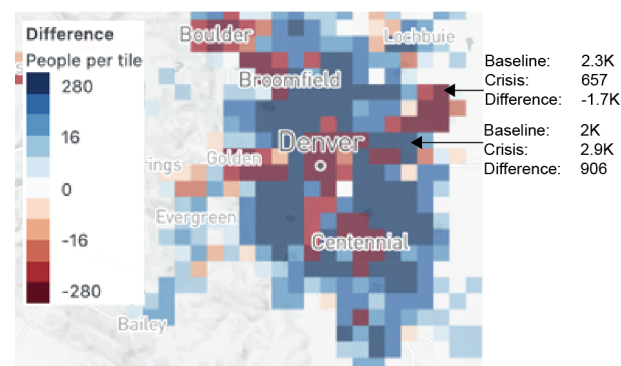


Figure 1. Facebook Data For Good map of Denver, CO on April 12, 2020, at 10L00 MNT. Cells are colored by difference between the current (crisis) and baseline user density data.

limited the utility of these data for the purposes of analyzing effects of stay-at-home orders.

Governor Polis of Colorado mandated a statewide stay-at-home order starting Thursday, March 26, which shifted to a safer-at-home order on April 27. While Utah never enacted a statewide directive, Salt Lake County began a "Stay safe, Stay home" order on March 30, 2020 and relaxed down to a "Stay smart, Stay safe" order on April 17. As restrictions began easing, we started working with local officials in Colorado and Utah to develop a set of metrics and an efficient reporting pipeline to assess the immediate impacts of new policies on population movement.

2. METRICS

Cities and neighborhoods have unique dynamics and interpreting behavior from density fluctuations can be difficult. Before stay-at-home orders were issued, most tiles followed a general weekend to weekday pattern where weekday density was greatest in business districts and weekend density was greatest in residential areas. After social distancing policies started, these patterns were disrupted and comparing current behavior to baseline behavior often gave counterintuitive results. For example, adherence to stay-at-home orders in some residential areas appeared to be poor based

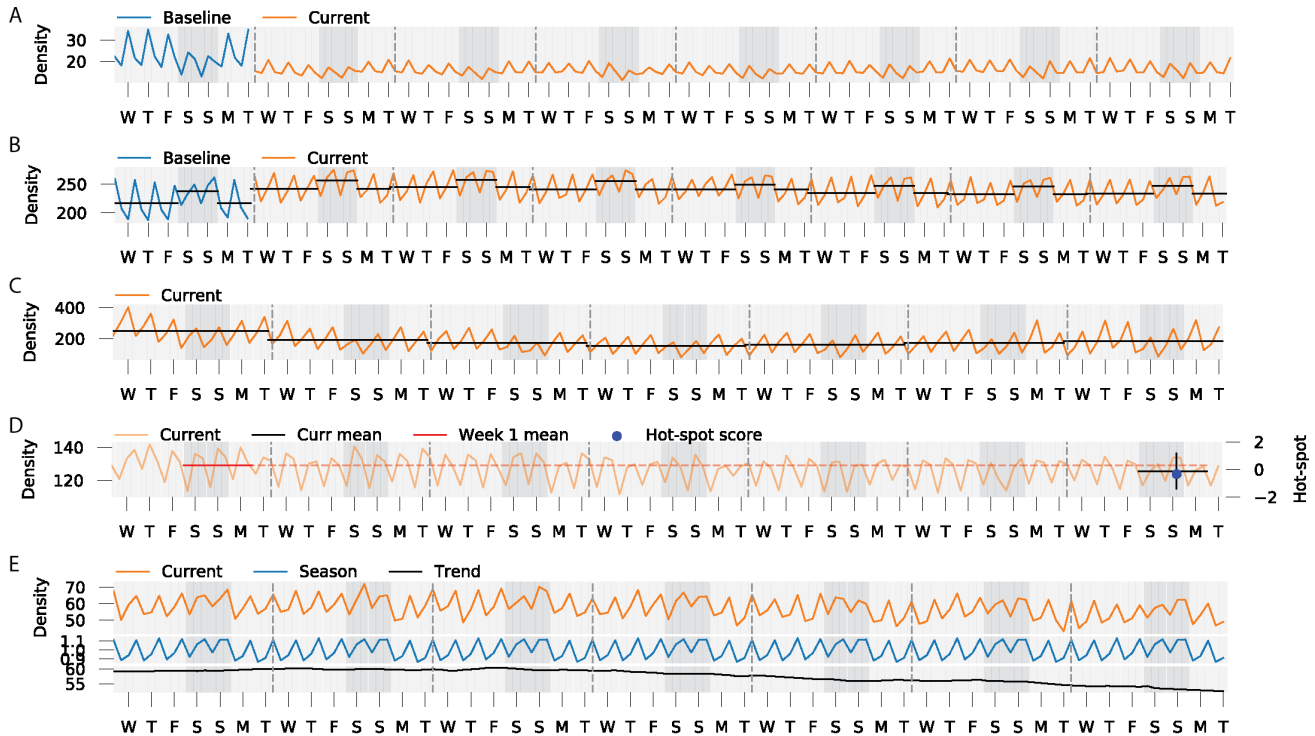


Figure 2. A) Baseline and current user density tracks for an individual cell in Colorado. Each day (shaded grey) includes time points at 0200, 1000, and 1800. Weekends are darkened. Current values start on March 24th, 2020, at 1800 MNT. B) The weekend score compares the weekday mean (black bar in light grey shade) to the weekend mean (black bar in dark grey shade). C) The slip score compares adjacent week means (black bars). D) The hotspot score (blue dot) compares the current mean (horizontal black bar), the first week mean starting on the same day (red), and the variance in similarly dense cells (vertical black bar). E) Current densities (orange) are decomposed into the seasons (blue), and trends (black).

on density fluctuations when in reality the density changes were a result of an overall increase in population by about 5%. We hypothesize that such increases were due to the return of college students and a drop in business travel, both of which are good social distancing practices. Given these nuances, we developed metrics with the base assumption that compliance starts out high and degrades over time. These metrics are targeted at monitoring transitions to and from stay-at-home orders.

2.1 Weekend Score

Under normal circumstances, most regions show a regular weekly pattern. Economic centers are denser on the weekdays (baseline in Figure 2A), and residential areas are denser on the weekends (baseline in Figure 2B). Under a stay-at-home order, the differences between weekend and weekday activity in regions containing non-essential businesses should be minor.

To measure weekday and weekend density differences, we developed the weekend score (ws) that compares the average weekday density (d_{wd}) to the average weekend density (d_{we}) during a week (Figure 2B):

$$ws = \log_2 \left(\frac{d_{wd}}{d_{we}} \right)$$

Areas with higher positive values have more weekday activity and areas with lower negative values have more weekend activity.

We track changes in behavior by comparing the score of individual tiles between weeks (Figure 3). In Figure 3, each point is a tile, and the point size corresponds to the tile's mean baseline density. Points

further to the right or higher indicate more weekday activity. The closer a point is to the diagonal red line, the more similar the activity between the two weeks. The overall change between weeks is quantified by the sum-of-squares distances between points and the diagonal. We identify weeks based on the collection start date, so “week 1” is effectively the first week of the stay-at-home order. Figure 3A shows the drastic change in behavior after the stay-at-home order was issued, and Figure 3B shows how behavior stabilized in the subsequent weeks. Points in Figure 3B are clustered around the origin, indicating consistent behavior across weekday and weekend activity.

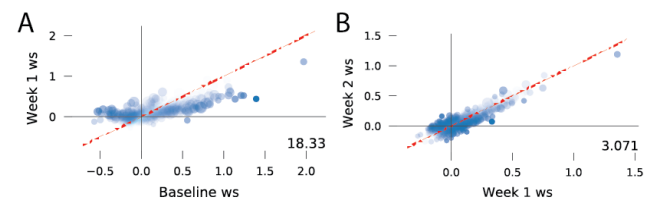


Figure 3. The change in weekend score from A) baseline to week one and B) from week one to week two. Each point is a tile and its size corresponds to its baseline density. Points on the red diagonal had scores that did not change. Points far from the red diagonal showed larger changes. The number in the lower right quadrant is the sum of square distances between the points and the diagonal.

2.2 Slip Score

The behavior of a region after a stay-at-home order is issued depends on the region's zoning and demographics, which complicates monitoring. For example, economic centers will be less dense, and residential centers will be denser since most people are not working or traveling. To track how well regions are adhering to their new patterns from week to week, we developed a slip score (ss). This metric assumes that adherence to the stay-at-home orders is best immediately following their issuance, then tracks changes by comparing the average weekly density (d_i) of consecutive weeks (see Figure 2C):

$$ss = \log_2 \left(\frac{d_{w2}}{d_{w1}} \right)$$

Areas with higher positive values were more active in the second week, and areas with lower negative values were less active.

Equal changes in density counts result in smaller slip scores in more populated tiles so we visualize slip score with respect to the region size. In Figure 4, each point is a tile, and points from denser regions are to the right. Points above the zero line have slipped into a more active state, and points below the line have become less active. From Figure 4, we can see that behavior has shifted from reducing activity to increasing activity.

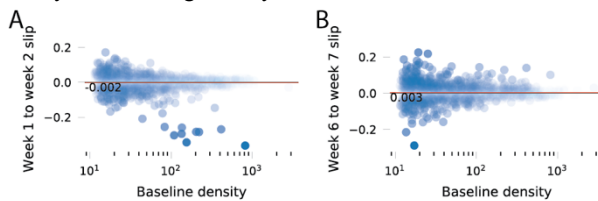


Figure 4. Slip scores between A) week one and week two and B) week six and week seven of the Colorado stay-at-home orders. Tiles far from the horizontal line at zero had larger relative changes between weeks. The red line gives the average slip weighted by baseline density. The x-axis is on a log scale.

2.3 Hot Spot Score

While the weekend score quantifies behavior pattern changes within weeks and the slip score captures gross density changes across weeks, we found local officials desired a finer resolution metric to assist in identifying sudden changes in population behavior. As a result, we developed a hot spot score (hs). This metric resembles a z-score as it is equal to the current 3-day average ($d3_c$) minus the corresponding 3-day average from week 1 ($d3_{w1}$), divided by an estimate of the standard deviation of the 3-day averages (see Figure 2D):

$$hs = \frac{d3_c - d3_{s1}}{sd(d3)}$$

Here we again assume that the first week of the stay-at-home order represents the state of highest compliance and present the current mobility patterns relative to that. Density patterns are averaged over 3-day windows to prevent spurious single-day fluctuations from receiving too much attention. For example, the score for Monday is an average over the densities observed on Saturday, Sunday, and Monday.

The purpose in scaling the density difference in the numerator by a standard deviation was to create a z-score, such that scores across tiles of different densities are comparable. However, the optimal

method of estimating the standard deviation of a tile's 3-day average is unclear. Using the given tile's 3-day averages across the observed time period, e.g. all Saturday-Monday averages, results in an estimator that is based on fewer than six data points per tile and hence extremely variable. Furthermore, a tile that experienced large swings in density would have a large tile standard deviation and a low hot spot score, which is undesirable. Since denser tiles typically have larger variability, we estimated the standard deviation for each tile and 3-day window, fit a linear regression to these standard deviations as a function of average tile density, and used the fitted values from the model in the calculations of hot spot scores.

In Figure 5, each point is a tile, and points from denser regions are to the right. Points with increased activity relative to the first week are above zero. Similar to Figure 4, there is a distinct increase in recent activity.

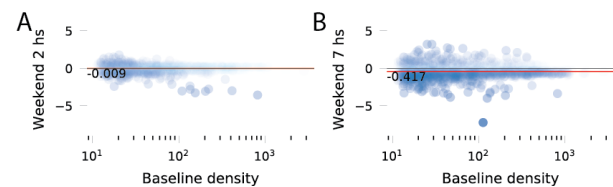


Figure 5. Hotspot scores for the A) second and B) seventh weekend of stay-at-home orders in Colorado. Tiles far above the horizontal line at zero showed evidence of substantial increases in activity. The red line gives the average hotspot score weighted by baseline density. The x-axis is on a log scale.

2.4 Trends

Density data can be represented as a time series with repeating short-term patterns (seasons) and the overall value increases or decreases (trends). Using a model, we can decompose a series into its seasons and trends [3], which provides a means to compare tiles with different weekday/weekend activities (seasons) (see Figure 2E).

Within a county, we can observe the differences in density dynamics between the business centers, which should be less dense during a stay-at-home order, and residential centers, which should be denser. By focusing on trends, we can more easily compare the activity of each tile. To capture the overall trend of a county, we take the mean of each tile's trend weighted by the tile's baseline density. Figure 6 gives the density trends for all of the tiles in Boulder County, Colorado. Each line is a tile, and the lines give the relative density trend the line thickness corresponds to the baseline tile density. Lines that end in reduced activity are blue, and those with increased activity are red. The black line is the average trend weighted by baseline density. While the absolute increase and decreases are important, the slope of each line is more insightful. With a few exceptions, the overall trend is flat in Boulder County.

3. DATA PRODUCTS

Governments are hierarchical, and the process of synthesizing complex data into recommendations is often performed by analysts and presented to policymakers. The availability and expertise of these analysts vary widely among local governments. To accommodate different data needs, we produce a range of products at different levels of granularity.

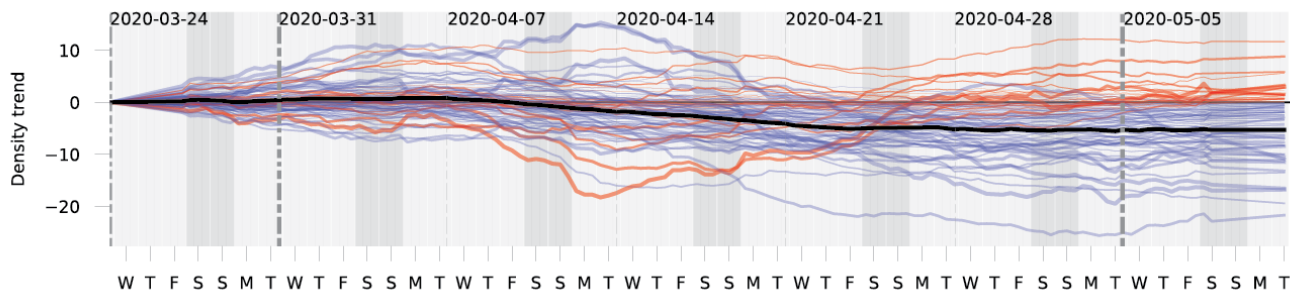


Figure 6. Trend lines for Boulder County Colorado. Each line is a tile, and the line thickness corresponds to the tile's baseline density. Blue lines end below zero, indicating that the current activity is lower than the starting activity. Red lines end above zero, indicating the current activity is higher.

3.1 Weekly Situational Awareness Reports

Our most refined product is a one-page weekly situational report that includes a bulleted summary of the previous week's activity and graphical views of our metrics. The sitrep is ideal for offices that do not have the capacity to interpret the metrics we provide. Even for localities with robust analytics capabilities, the weekly sitrep is a useful artifact that can be easily passed up to policymakers and shared across agencies.

3.2 Interactive Data Browser

To make this data and our metrics broadly available to government agencies and the general public, we have created a web application. With an interactive map, timeline and plots, the app allows users to simultaneously visualize weekend scores, slip score and population density trends over time and space. The web application can be found at: <https://covid19.colorado.edu>

3.3 ArcGIS Maps

Geographic information system (GIS) is a framework for storing and visualizing information spatially that allows analysts to interpret data by combining different information sources as layers on top of local maps. Many cities and counties have invested heavily in GIS and employ highly trained analysts that can combine their technical expertise with their local knowledge to interpret complex data sources quickly. To leverage these resources, we provide generated shapefiles that contain scores for each tile and publish these shapefiles as an ArcGIS layer.

4. CONCLUSIONS

Understanding the behavior of a city or county from population density data and integrating that knowledge into public health decisions is an evolving problem. We have focused on making close personal connections with local decision-makers to ensure that we are collecting the most insightful metrics and delivering the most useful data products. These connections will be vital as public health priorities shift, and data needs change.

Comments reflecting the utility of this work from our local government partners are given below:

- CCD (City and County of Denver) intends to utilize the data to evaluate the relationship between mobility and COVID-19 Case Rates by geographic area, e.g. does higher mobility lead to higher case rates and vice-versa. We may also use the data to inform our social distancing/safer-at-home order enforcement activities. (Paul Kresser, Chief Data Officer, City and County of Denver)

- In lieu of widespread testing and the data that comes from it, the Arapahoe County Office of Emergency Management is building an early warning system of areas that could become hotspots with the potential to overwhelm the medical and public health systems. Density and mobility are key indicators in this customized early warning system. We infuse the mobility data from these reports into a larger system that helps anticipate areas of potential viral spread, thus allowing for a more proactive response in regards to PPE supply distribution, and targeted community testing. (Nathan Fogg, Office of Emergency Management, Arapahoe County Sheriff's Office)
- I have found the sitreps useful for supplementing information I am getting from a few other sources to help me provide updates to our agency leadership and external partners about what we are seeing in terms of social mobility and changes over time. (Emily Payne, Epidemiologist, Boulder County Public Health)
- The sit report provided by the CU/CSU research team has been incorporated into the Situational Awareness Viewer application created by Boulder County GIS that is used in the Boulder Office of Emergency Management. This is being evaluated by emergency operations personnel to determine what spatial patterns can be discerned from the report as it pertains to stay at home/safer at home adherence. (Mark Mullane, GIS Program Manager, Boulder County)

While our metrics and visualizations have been developed specifically for our local partners, we believe they will be either directly useful to other localities or can serve as starting points for more specific data needs.

5. ACKNOWLEDGMENTS

We would like to thank the team from Facebook Data for Good, including Alex Pompe and Mercedes Erdey for helping us understand, access, and debug the density data; Caroline Buckee, Andrew Schroeder, and Satchit Balsari at the COVID-19 Mobility Network; and our government partners: Nathan Fogg from Arapahoe County Sheriff's Office, Office of Emergency Management; Mark Mullane, Megan Noel, Megan Hatten, Kristen Daly, Emily Paye, Audrey Schroer and Carol Helwig from Boulder County Public Health; Andrew Blunk and Paul Kresser from the City and County of Denver Technology Services; and Ilene Risk, Michelle Dallon, and Nicholas Rupp from Salt Lake County Public Health.

6. REFERENCES

- [1] COVID-19 Mobility Data Network. <https://www.covid19mobility.org/>
- [2] Facebook Data For Good. <https://dataforgood.fb.com/>.
- [3] Skipper S. and Perktold J. statsmodels: Econometric and statistical modeling with python. Proceedings of the 9th Python in Science Conference (Austin TX, June 2010).

About the authors:

Ryan M. Layer and Daniel B. Larremore are Assistant Professors of Computer Science and in the BioFrontiers Institute at the University of Colorado Boulder.

Bailey K. Fosdick is an Assistant Professor of Statistics at Colorado State University.

Michael Bradshaw is a Ph.D. candidate in Computer Science at the University of Colorado Boulder.