

Prevalence and mortality of Lung Comorbidities Among Patients with COVID-19: A systematic review and meta-analysis

Authors:

Mohammed G Alkhathami, BD ^{1,2#}, Shailesh M Advani, MD, PHD ^{3#}, Adil A Abalkhail, PHD ⁴, Fahad M Alkhathami, Ms ⁵, Mohammed K Alshehri, BD ⁶, Ebtisam Albeashy BD ⁷, Jihad A Alsalamah BD ^{2,8}

Affiliations:

¹ Prince Sultan Military College of Health Sciences, Department of Respiratory Care, Dammam, Saudi Arabia

² UOG, University of Glasgow, Glasgow, UK

³ Cancer Prevention and Control Program, Georgetown University School of Medicine, Georgetown University, Washington DC, USA

⁴ Qassim University, Epidemiology and Infectious Disease Control, Department of Human Health, Qassim, Saudi Arabia

⁵ Jazan University, Respiratory Care Department, Jazan, Saudi Arabia

⁶ King Fahad Medical City, Respiratory Care Administration, Riyadh, Saudi Arabia

⁷ Itqan Scientific Research Services Company, Jeddah, Saudi Arabia

⁸ Prince Sultan Military Medical City, Respiratory Care Department, Riyadh, Saudi Arabia

#contributed equally

Corresponding author:

Mohammed G Alkhathami, BsRT

1. Prince Sultan Military College of Health Sciences, Department of Respiratory Care, Dhahran 34313, Saudi Arabia, Email: mohamdr@gmail.com, Cell-phone: +966 501001333.
2. University of Glasgow, Glasgow, G12 8QQ, Scotland, UK, Cell-phone: +44 7367129134

Keywords: Coronavirus, SARS-CoV-2; Lung comorbidities; Mortality, COPD, Asthma, Lung Cancer, Systematic Review

Funding

No funding was received for this project

Authors contributions:

- Literature search: MA, JA
- Data collection: MA, FA, MA, EA, AA
- Study design: MA, SA, MA, JA, AA
- Analysis of data: FA, MA, MA, EA, JA
- Manuscript preparation: MA, SA
- Review of manuscript: MA, SA, FA, MA, EA, AA, JA

Authors have no conflict of interest to declare

Abstract

Background

COVID-19 infections are seen across all age groups but they have shown to have a predisposition for the elderly and those with underlying comorbidities. Patients with severe COVID-19 infections and comorbidities are more prone to respiratory distress syndrome (ARDS), mechanical ventilator use and ultimately succumb to these complications. Little evidence exists of the prevalence of underlying lung comorbidities among COVID-19 patients and associated mortality.

Methods

We performed a systematic review of the literature including PubMed (Medline), Embase (Ovid), Google Scholar and Cochrane Library. The last date for our search was 29th April 2020. We included all original research articles on COVID-19 and calculated prevalence of chronic lung disease patients among COVID-19 patients using random effects model. Further we assessed for mortality rates among COVID-19 patients associated with these lung comorbidities.

Results

The authors identified 29 articles that reported prevalence of chronic lung conditions among COVID-19 patients. Among those, 26 were from China and 3 from the United States. The pooled prevalence of lung comorbidities including Asthma, COPD, and lung cancer was 3% (95% CI=0-14%), 2.2% (95% CI=0.02-0.03%) and 2.1% (95% CI=0.00-0.21%) respectively. Mortality rates associated with these comorbidities was 30% (41/137) for COPD and 19% (7/37) for lung cancer respectively. No mortality rates were reported for patients with asthma.

Conclusion

This study offers latest evidence of prevalence of chronic lung conditions among patients with COVID-19. Asthma, followed by COPD and lung cancer, was the most common lung comorbidity associated with COVID-19, while the higher mortality rate was found in COPD. Future studies are needed to assess other lung comorbidities and associated mortality among patients diagnosed with COVID-19.

Introduction

The novel coronavirus (2019-nCoV/SARS-Cov-2) also termed as COVID-19 discovered in late 2019 in Wuhan, China has been established to be the main cause of a cluster of pneumonia cases which have disrupted the world order today.¹ . As of May 26th, 2019, the spread of COVID-19 has been rapid across the globe with more than 5,307,298 confirmed cases of COVID-19, including 342,070 deaths, have been reported by the World Health Organization. Given the rapid spread of COVID-19 and driven by international concern, the WHO declared coronavirus as a global pandemic.² Caused by a new strain of the virus, COVID-19 belongs to the family of the class of coronavirus that included viruses associated with the outbreak of Middle East Respiratory (MERS) in 2012 and severe acute respiratory syndrome (SARS) in 2002.³ . Today, most COVID-19 patients show symptoms of viral pneumonia such as fever, fatigue, dry cough, and lymphopenia.⁴

Reports from around the world highlight that COVID-19 infection is more common among the elderly, those who live in elderly homes or nursing homes, and those with preexisting conditions like diabetes, heart diseases, and cancer.⁵ Rapidly evolving evidence highlight the burden and rates of infection among people with and without comorbidities and see a significant higher burden among those with comorbidities.⁶ Especially, in this early systematic review and meta-analysis, authors identified that most prevalent comorbidities among patients with COVID-19 included hypertension (21.1%, 95% CI: 13.0–27.2%), diabetes (9.7%, 95% CI: 7.2–12.2%), cardiovascular disease (8.4%, 95% CI: 3.8–13.8%) and respiratory system disease (1.5%, 95% CI: 0.9–2.1%).⁶ In addition to symptoms associated with pneumonia, COVID-19 has been shown to cause damage to other organs including heart, liver, and kidneys as well as blood and immune system.⁴ In severe COVID-19 infection, patients develop or succumb to multiple organ failure, shock, acute respiratory distress syndrome, heart failure, arrhythmias, and renal failure.⁷

Finally, smoking and associated comorbidities have shown to increase the risk of infection with COVID-19 due to underlying mechanisms surrounding angiotensin-converting enzyme receptors and high affinity of COVID-19 to ACE receptors.⁸ According to recent findings, COVID-19 related lung injury leading to acute respiratory distress syndrome remains the leading cause of mortality worldwide.⁹ This includes the development of secondary haemophagocytic lymphohistiocytosis (sHLH), a hyperinflammatory syndrome triggered by a viral infection and characterized by a fulminant and fatal hypercytokinaemia with multiorgan failure and ARDS is the hallmark of COVID-19 infection-associated mortality.⁹ Due to the underlying predisposition of COVID-19 to lung tissue, it remains imperative to assess the burden of lung-specific comorbidities including COPD, asthma, lung cancer, and cystic fibrosis among COVID-19 patients. This remains crucial to improving outcomes among those with underlying comorbidities as they might share common underlying mechanisms. Up to date, there is no comprehensive evidence to evaluate the prevalence of chronic lung diseases in COVID-19 patients. Therefore, the primary objective of this systemic review and meta-analysis is to determine the prevalence and mortality of chronic lung diseases which include COPD, lung cancer, asthma, and cystic fibrosis in confirmed COVID-19 cases.

Methods

Search Strategy

We registered this systematic review with PROSPERO (ID: CRD42020178039). Also, it was conducted in accordance with the Preferred Reporting Items for Systematic Reviews and Meta-Analyses (PRISMA) guidelines.¹⁰

Authors performed a literature search of scientific databases including PubMed (Medline), Embase (Ovid), and the Cochrane Library. Furthermore, we did an additional search on Google Scholar. The date of our search was from inception to April 29th, 2020. Keywords used for our search included: "COVID-19 AND chronic lung disease" OR "COVID-19 AND Comorbidities " OR "new coronavirus AND Characteristics" OR " new coronavirus

AND Comorbidities" OR "Coronavirus AND characteristics AND Comorbidities" OR "Coronavirus Infections" OR " SARS-CoV-2 AND characteristics" OR " SARS-CoV-2 AND Comorbidities"). The search strategy was developed for one database and then modified for other search engines. Furthermore, we did an additional search from references of included studies and published preprints. Standard excel sheets were used for data import, abstract screening and full text review. Two reviewers independently screened all abstracts. They rated abstracts as yes or no for inclusion in full text review. For those abstracts, where a decision could not be reached, decision was reached through mutual consensus.

Inclusion and Exclusion Criteria

We included all studies in English language that were peer-reviewed and preprints of patients diagnosed with COVID-19 and incorporated information on lung comorbidities including Asthma, COPD, Lung cancer, and Cystic fibrosis. We excluded those that did not report on these conditions, not full text, were reviews articles or meta-analysis, perspectives, comments, and other reports.

Data Extraction and Paper Quality Evaluation

Two authors (M.A. and J.A.) screened and evaluated the literature independently for both narrative synthesis and statistical analysis. From each study, various details including the authors' names, study design/country, study population, age, and acknowledged features and mortality of Asthma, COPD, Lung cancer and Cystic fibrosis, extracted into Microsoft excel sheet. Detailed description and characteristics of included studies are summarized in Table 1. Moreover, two independent authors were assessed all the included papers using the modified version of the Newcastle-Ottawa Scale (NOS) and the results are provided in Table 1.¹¹ This detailed table includes seven domains, each one of these domains was scored from 0 (high risk of bias) to 1 (low risk of bias) and we took a total of the domains to result in a score between 0 to 7, where a higher score indicates a low risk of bias.

Statistical Analysis

During this collective investigation, we calculated pooled estimates of chronic lung conditions among COVID-19 patients. We used random effects model to estimate these prevalence's among COVID-19 patients. Further we assessed for heterogeneity and publication bias. In addition, 95% confidence interval used to estimate the Inverse variance method, and heterogeneity was evaluated by using I^2 . Further, the restricted maximum-likelihood estimator was used to estimate the between-study variance biases. Data were displayed using forest plots and all statistical analyses were performed using metaprop command in R metaprop command. Further publication bias was assessed using Funnel Plots and Egger's regression test .^{12, 13}

Steps involved in Publication bias:

We used the trim-and-fill procedure to account for publication bias.¹⁴ It includes the following five steps:

- a. Estimating the number of studies in the outlying (right) part of the funnel plot.
- b. Removing (trimming) these effect sizes and pooling the results with the remaining effect sizes.
- c. This pooled effect is then taken as the center of all effect sizes.
- d. For each trimmed/removed study, an additional study is imputed, mirroring the effect of the study on the left side of the funnel plot.
- e. Pooling the results with the imputed studies and the trimmed studies included.

Result

Characteristics of included studies

A summary of the included studies is presented in Table 1, which included a total of 6261 confirmed COVID-19 patients across 29 included studies. Majority of our participants were males (54%). Due to the novel nature and outbreak of COVID-19, our articles found that only three lung comorbidities were included in these articles. These included asthma, COPD, and

lung cancer respectively. Surprisingly, no studies estimated prevalence of cystic fibrosis that increases risk of individuals to opportunistic infections. This might be due to it being a rare disease and having low population prevalence. The sample size of the included studies ranged from 2 to 1590 patients. Most of the studies were retrospective in nature and based mainly in China (n=26) followed by the United States (n=3). Further mortality rates were only reported for COPD and lung cancer. The crude mortality rate was 30% (41/137) and 19% (7/37), respectively. Figure 1 provides an overview of our selection process using the PRISMA flow chart.

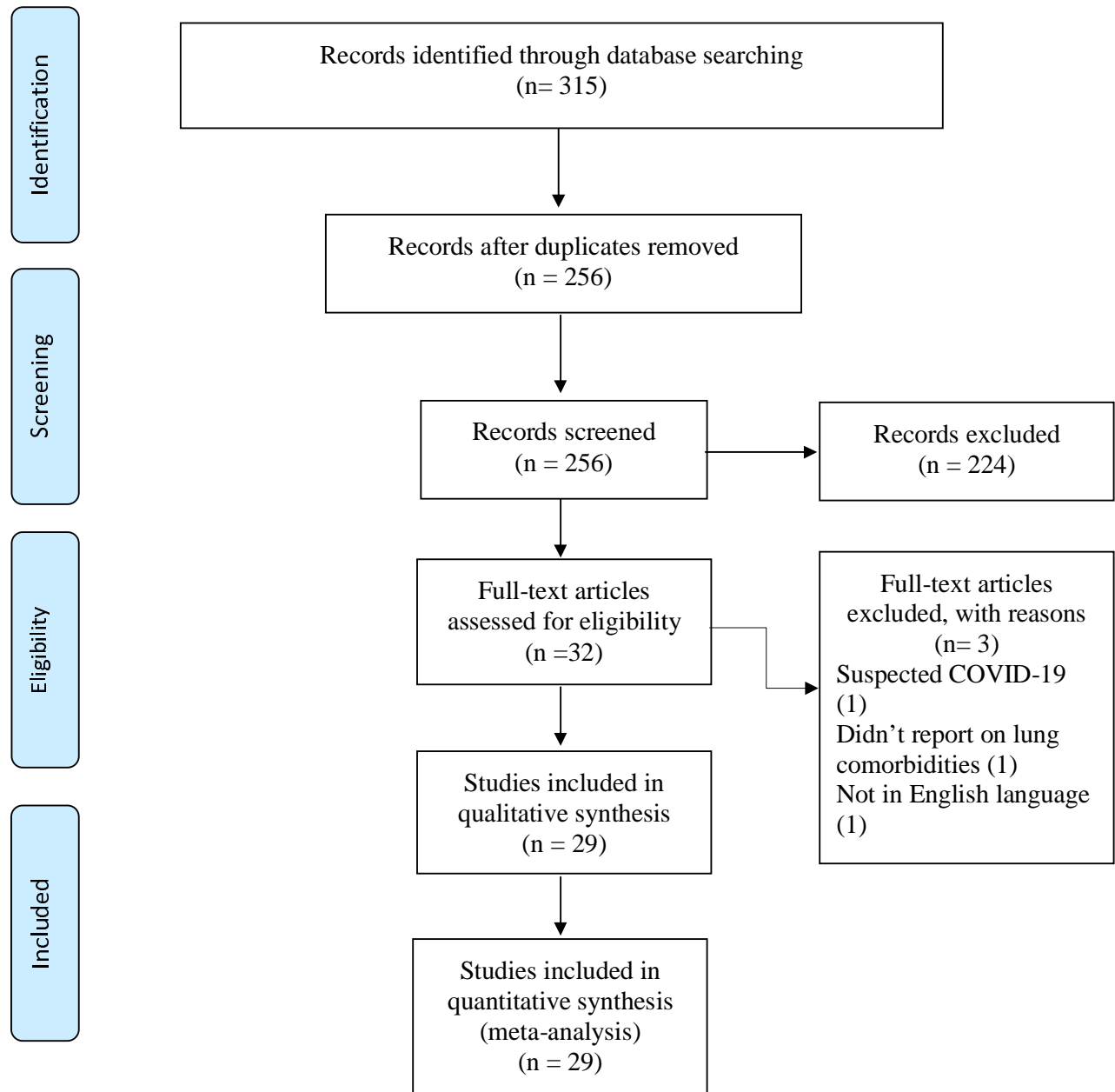


Fig1. PRISMA flow chart of the systematic literature review and article identification.

Meta-analysis of prevalence of lung comorbidities among patients with COVID-19

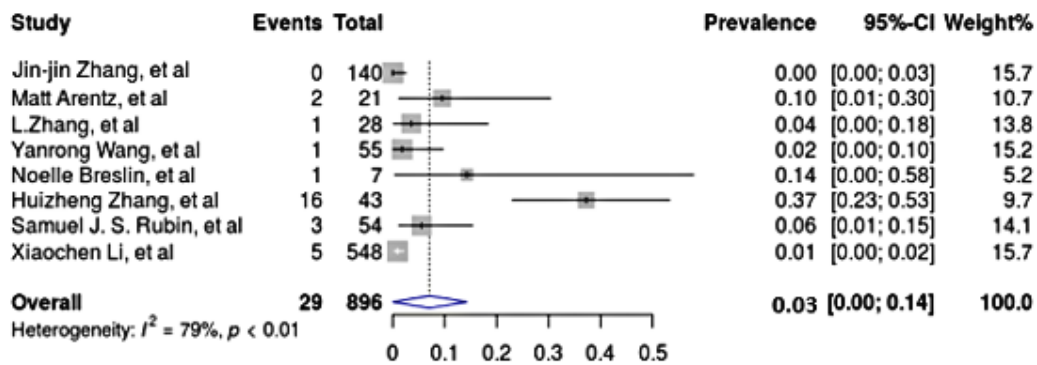


Fig2: Prevalence of asthma among patients hospitalized with COVID-19.

Asthma

We identified 8 studies that measured prevalence of asthma among patients diagnosed with COVID-19.¹⁵⁻²² In pooled analysis we found that prevalence of asthma among patients hospitalized with COVID-19 was 3% (range 0-14%). Figure 2 shows the forest plot for asthma prevalence among COVID-19 patients. Our analysis identified significant presence of heterogeneity in our estimate ($I^2 = 79\%$, $p < 0.01$). There was significant publication bias in studies was present because there was asymmetry of the funnel plot presented in figure 3 based on Egger's test was ($t = 2.71$, $p = 0.04$). Therefore, we performed a trim and fill method in figure 3. This estimate showed little change, which indicated influence of the publication bias was small ($t = 0.15$, $p = 0.89$).

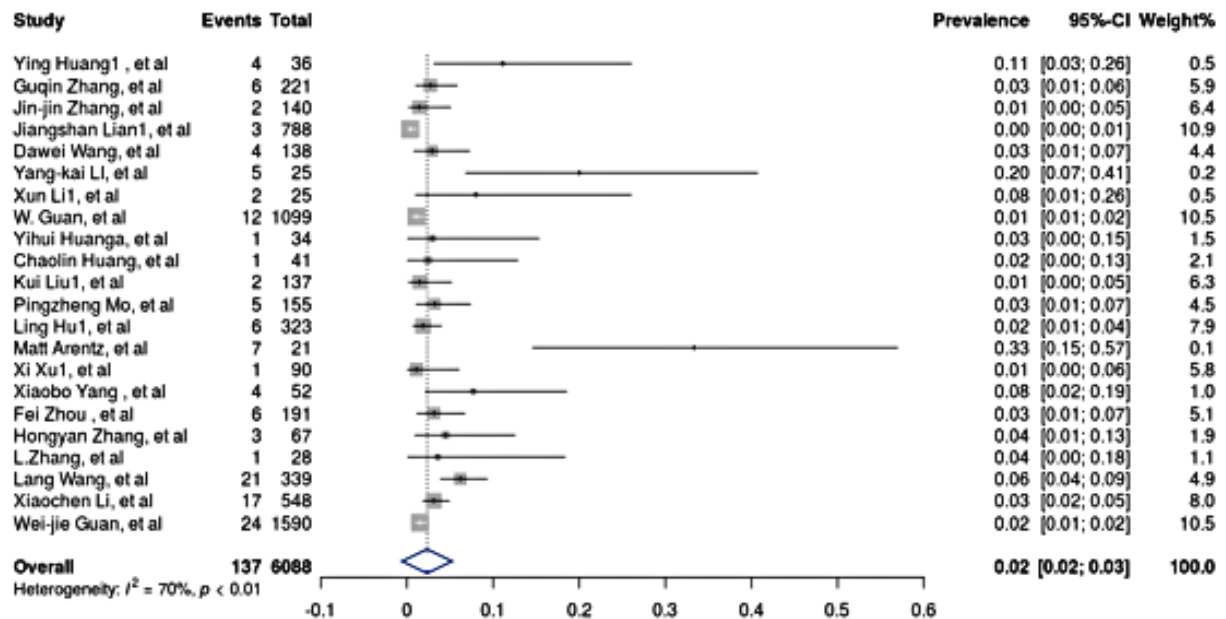


Fig 3: Prevalence of chronic obstructive pulmonary disease (COPD) among patients hospitalized with COVID-19.

COPD

The pooled prevalence of COPD identified in 22 studies among patients hospitalized with COVID-19. It was estimated to be 2.2% (95% CI=0.02-0.03%).^{15-17, 22-40} Figure 3 shows the forest plot for COPD prevalence among COVID-19 patients. Our analysis identified significant presence of heterogeneity in our estimate ($I^2 = 70\%$, $p < 0.01$). The estimate of the heterogeneity variance using the statistic I^2 was 70 %, value of t is 6.05 and the p-value was < 0.0001 , which means that a high significant publication bias was present. This is represented in of the funnel plot in Figure 3. As a result, we carry out a trim and fill method in figure 3. Here, the asymmetry outlying part of the funnel plot was trimmed off and number of studies was estimated. This estimate showed little change, which indicated influence of the publication bias was small. Egger's test was (t = 0.66, p-value = 0.51).

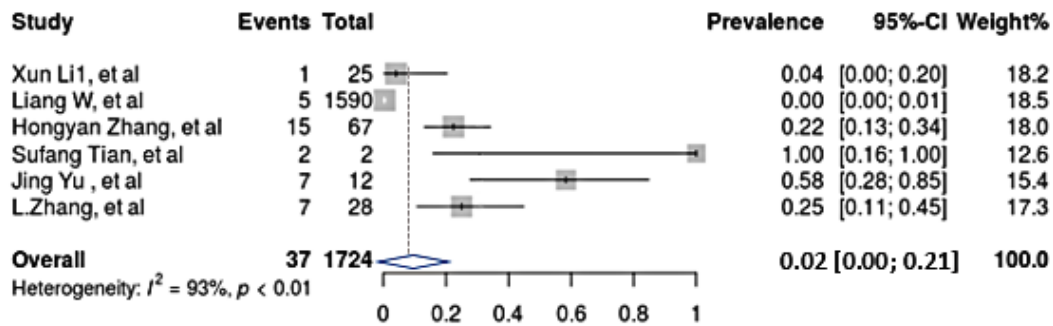
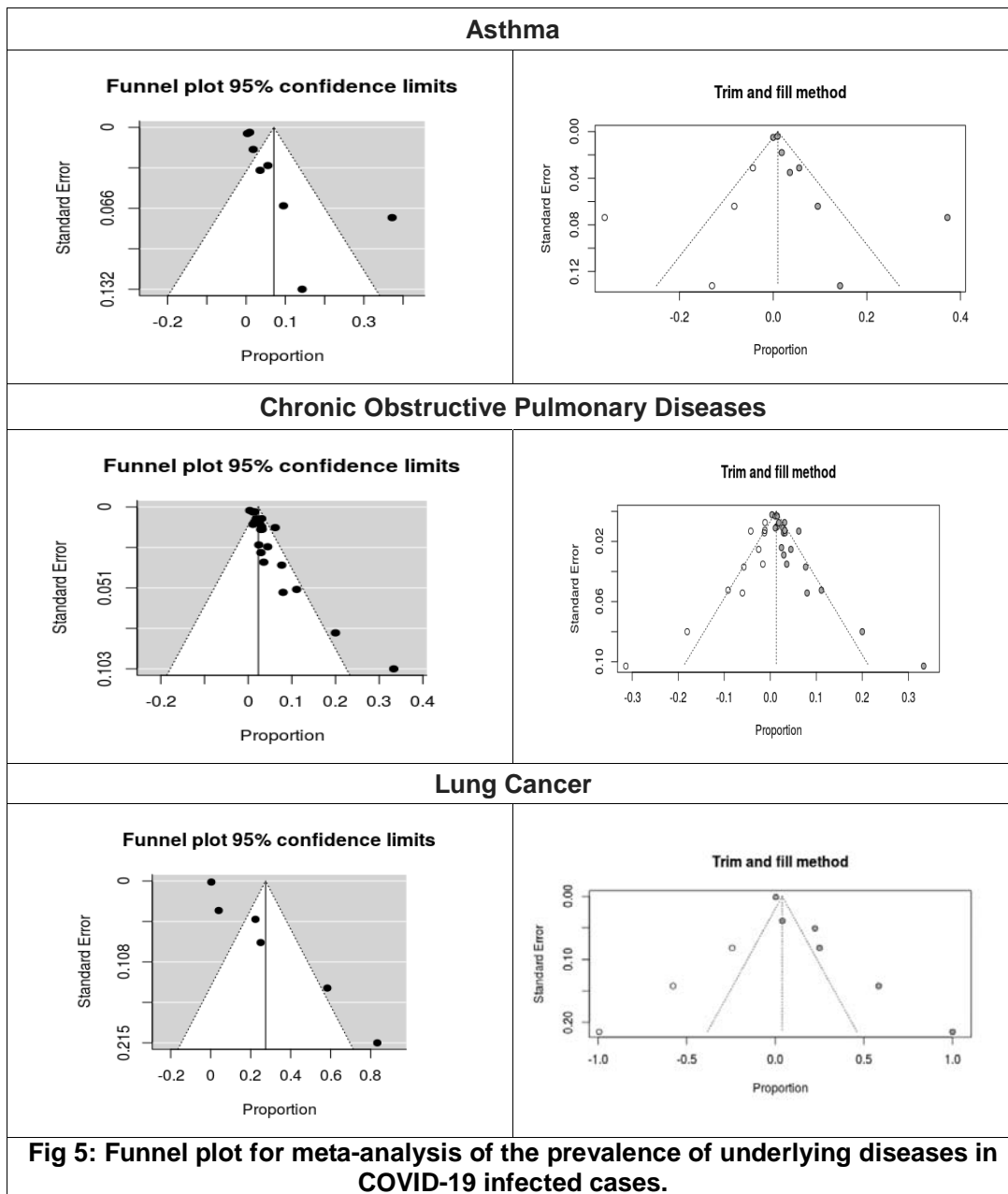


Fig 4: Prevalence of lung cancer among patients hospitalized with COVID-19.

Lung Cancer

We identified 6 studies that measured prevalence of lung cancer among patients diagnosed with COVID-19.^{15, 28, 38, 41-43} In pooled analysis we found that prevalence of lung cancer among patients hospitalized with COVID-19 was 2.1% (95% CI=0.00-0.21%). Figure 4 shows the forest plot for lung cancer prevalence among COVID-19 patients. Our analysis identified significant presence of heterogeneity in our estimate ($I^2 = 93\%$, $p < 0.01$). A significant publication bias was found in studies ($t = 5.18$, $p = 0.01$) in funnel plot see Figure 3. Consequently, we implement a trim and fill method in figure 3. These studies were used to estimate the true center of the funnel. This estimate showed little change, which indicated influence of the publication bias was small. Egger's regression test was ($t = 0.46$, $p = 0.66$).



Quality Assessment

High levels of quality of the included studies in a meta-analysis are preferable. In our study, there was variable quality of the included studies. Another limitation is that the funnel plot indicated there was publication bias because there was asymmetry. Using the trim and fill method we showed that there was no change in the center of the proportion and therefore the influence of publication bias was small (Figure 5). Further, NOS assessment showed that

risk of bias ranged from 4 to 7; all the included studies scored ≥ 4 , which indicates low risk of bias.

Discussion:

This study helps provide and strengthen the growing evidence that comorbidities play a major role in risk profiling for at risk patients for COVID-19. Though every individual faces the risk of contracting COVID-19, many remain asymptomatic. However, the elderly and those with underlying comorbidities have shown to not only be affected by COVID-19 infection but have a more severe infection, they are more likely to face adverse outcomes, including life-threatening illnesses, use of life-saving support equipment's including ventilators and succumb to COVID-19 related illnesses of the heart and the lung ^{44, 45}. Hence, individuals with underlying comorbid conditions are particularly vulnerable and should provide a high level of care including prevention and treatment to maximize benefits and minimize harms.

We found that the pooled prevalence of COPD among COVID-19 patients ranged from 2-3%. COPD remains an important sequelae of smoking associated behaviors. COPD is an obstructive pulmonary disorder that encompasses emphysema and chronic bronchitis, characterized by increasing breathlessness, bronchial inflammation, and a decline in lung function tests. Globally, COPD incidence continues to increase with smoking prevalence and age; it is now considered to be an important comorbid condition that impacts both smoking associated outcomes including lung cancer and overall quality of life. ⁸ Further, prior reports on prevalence of COPD among COVID-19 patients have estimated low prevalence of COPD in range from 0.8-2%. ^{46, 47} Further COPD has been shown to be associated with a nearly fourfold increase in the risk of COVID-19 infection.⁴⁴ Also, our mortality prevalence among COPD patients was similar to rates reported previously. ^{46, 47}

A potential mechanism underlying higher risk of COVID-19 infection among patients with smoking-related illnesses directs towards the evidence of smoking associated upregulation of ACE-2 receptors in lower airways (type 2 pneumocytes) leading to higher rates of infection with COVID-19 among patients with underlying smoking associated comorbidities.⁸ The microbial structure of coronavirus is characterized by transmembrane (spike or S) glycoproteins namely S1 and S2.⁴⁸ The S1 contains sites for bindings of an angiotensin-converting enzyme that provides the virus the pathway to enter into the host cells while the S2 domain is responsible for cellular infiltration.⁴⁹ Recent studies have shown that ACE2-receptors provide a binding site for SARS-COV-2 i.e. COVID-19 with an affinity 10-20 times as compared to other coronaviruses.³⁵ Further, patients with COPD also show high levels of ACE2 leading to a potentially higher risk of infection with COVID-19, mediate other potential enzymatic mechanisms, leading to lung injury, respiratory failure, and ultimately death.^{50, 51}

In the pooled analysis, we found that the prevalence of asthma among patients hospitalized with COVID-19 was 3% (CI, 0-14%). Current evidence suggests that asthma remains important morbidity among patients diagnosed with COVID-19.⁵² Further in a report from New York City, the prevalence of asthma was 12.5% among patients diagnosed with COVID-19.⁵³ Patients diagnosed with asthma are highly prone to infections including COVID-19 that can trigger their asthma exacerbations, thereby leading to these patients presenting to primary and emergency departments with common symptoms associated with COVID-19 including fever, dry cough and shortness of breath.⁵⁴ Further, due to differential expression of underlying genes including ACE2 and TMPRSS2 among asthma patients based on clinical and demographic characteristics, it further warrants the need to identify the subgroup of asthma patients who might be at heightened risk of COVID-19 and develop appropriate isolation, treatment, and management strategies.⁵⁵ Finally, patients with asthma have shown to have a weakened immune system including a deficiency and delay in lung cell interferon (IFN)- α , IFN- β and IFN- λ (7) leading to asthma exacerbations and risk of viral infections. Quantifying these cytokines might be helpful to further elucidate underlying

mechanisms for progression of disease and COVID-19 and develop potential therapeutic targets.⁵⁶ In a case report of patient who died of COVID-19 and had underlying asthma, post-mortem analysis showed mixed features of mucus plugging (hallmark of asthma) and diffuse alveolar damage (hallmark of COVID-19 pneumonia).⁵⁷ Hence it remains imperative to manage patients with asthma with utmost care to prevent exacerbations and associated morbidity and mortality

We found that prevalence of lung cancer among patients hospitalized with COVID-19 was 2.1% (95% CI, 0.00-0.21%). Cancer predisposes an individual to a heightened risk of viral and bacterial infections due to weakened immune system. In a retrospective analysis of patients with COVID-19 and cancer in Wuhan, China, authors identified that lung cancer was the most common cancer (25%) among COVID-19 patients with cancer .¹⁵ Further the study found that patients with cancer were more likely to have more adverse events, including admission to ICU, use of mechanical ventilation and death. ¹⁵ Due to the complexity of multiple factors surrounding cancer patients including patients' clinical and demographic characteristics like age, gender, site, and stage as well as treatment and comorbidity history, certain groups recommend that baseline SARS-CoV-2 testing for all patients affected by lung cancer should be recommended and practiced.⁵⁸ Finally, in a pathology study of 2 patients who died of lung cancer, autopsy findings identified features associated with early COVID-19 infection including edema, proteinaceous exudate, focal reactive hyperplasia of pneumocytes with patchy inflammatory cellular infiltration, and multinucleated giant cells .⁴²

COVID-19 pandemic has led to an urgent need to focus on high risk patients including the elderly with underlying comorbidities. Evidence suggests that 14%–24% of patients developed pneumonitis and required hospitalization and oxygen support. ⁵⁸ Further, about 5% of patients with COVID-19 infection develop acute respiratory distress syndrome (ARDS) or sepsis-related acute organ dysfunction, requiring admission to intensive care units. ⁵⁸ Given the highly contagious nature of the virus and its affinity for lung tissue, special focus and emphasis on developing guidelines for the management of patients with underlying lung conditions remain critical to preventing disability and death.

Our study has limitations and strengths. COVID-19 is rapidly evolving globally. Hence as new literature continues to be reported, estimates of individuals with COVID-19 and chronic comorbidities might change. Further, the majority of our studies were from China, the epicenter of the COVID-19 outbreak. Hence our results might not be an adequate representation of COVID-19 cases from the global perspective. Furthermore, certain studies reported low to medium risk of bias which might be due to heterogeneity due to sample size differences, data collection procedures, differences in assessment of comorbidities or evaluation of COVID-19, and assessment of other characteristics. Our strengths include the updated use of all available literature on lung-specific comorbidities and calculating pooled estimates as compared to earlier reports.^{46, 47, 59}

To conclude, our results identify key areas for future work. First, designing and implementing smoking cessation interventions on a nationwide scale to help reduce risk to high-risk smokers. Second, identifying high risk individuals in community settings with underlying lung comorbidities including those with uncontrolled COPD and asthma. Third, promoting and identifying new treatment strategies for these conditions that reduce the risk of immunosuppression, thereby reducing the risk of COVID-19 infection. Finally, isolating, tracking and tracing COVID-19 patients with lung comorbidities to prevent adverse outcomes.

In summary, our review aimed to study the prevalence and mortality associated with lung comorbidity among patients with COVID-19. It shows that the most prevalent lung comorbidity associated with COVID-19 was asthma followed by COPD and lung cancer, while the higher mortality rate was found in COPD followed by lung cancer. Future studies are needed to assess prevalence and mortality of other lung comorbidities among patients diagnosed with COVID-19.

References

1. Shi H, Han X, Jiang N, Cao Y, Alwalid O, Gu J, et al. Radiological findings from 81 patients with COVID-19 pneumonia in Wuhan, China: a descriptive study. *The Lancet Infectious Diseases* 2020.
2. Jiang S, Xia S, Ying T, Lu L. A novel coronavirus (2019-nCoV) causing pneumonia-associated respiratory syndrome. *Cellular & molecular immunology* 2020;17(5):554-554.
3. Shereen MA, Khan S, Kazmi A, Bashir N, Siddique R. COVID-19 infection: Origin, transmission, and characteristics of human coronaviruses. *Journal of Advanced Research* 2020.
4. Wang T, Du Z, Zhu F, Cao Z, An Y, Gao Y, et al. Comorbidities and multi-organ injuries in the treatment of COVID-19. *The Lancet* 2020;395(10228):e52.
5. Jordan RE, Adab P, Cheng K. Covid-19: risk factors for severe disease and death
6. Yang J, Zheng Y, Gou X, Pu K, Chen Z, Guo Q, et al. Prevalence of comorbidities in the novel Wuhan coronavirus (COVID-19) infection: a systematic review and meta-analysis. *International Journal of Infectious Diseases* 2020.
7. Chen N, Zhou M, Dong X, Qu J, Gong F, Han Y, et al. Epidemiological and clinical characteristics of 99 cases of 2019 novel coronavirus pneumonia in Wuhan, China: a descriptive study. *The Lancet* 2020;395(10223):507-513.
8. Leung JM, Yang CX, Tam A, Shaipanich T, Hackett T-L, Singhera GK, et al. ACE-2 expression in the small airway epithelia of smokers and COPD patients: implications for COVID-19. *European Respiratory Journal* 2020;55(5).
9. Mehta P, McAuley DF, Brown M, Sanchez E, Tattersall RS, Manson JJ. COVID-19: consider cytokine storm syndromes and immunosuppression. *The Lancet* 2020;395(10229):1033-1034.
10. Moher D, Shamseer L, Clarke M, Ghersi D, Liberati A, Petticrew M, et al. Preferred reporting items for systematic review and meta-analysis protocols (PRISMA-P) 2015 statement. *Systematic reviews* 2015;4(1):1.
11. Wells GA, Tugwell P, O'Connell D, Welch V, Peterson J, Shea B, et al. The Newcastle-Ottawa Scale (NOS) for assessing the quality of nonrandomized studies in meta-analyses. 2015.
12. Sterne JA, Gavaghan D, Egger M. Publication and related bias in meta-analysis: power of statistical tests and prevalence in the literature. *Journal of clinical epidemiology* 2000;53(11):1119-1129.
13. Sterne JA, Egger M. Funnel plots for detecting bias in meta-analysis: guidelines on choice of axis. *Journal of clinical epidemiology* 2001;54(10):1046-1055.
14. Duval S, Tweedie R. A nonparametric "trim and fill" method of accounting for publication bias in meta-analysis. *Journal of the american statistical association* 2000;95(449):89-98.
15. Zhang L, Zhu F, Xie L, Wang C, Wang J, Chen R, et al. Clinical characteristics of COVID-19-infected cancer patients: a retrospective case study in three hospitals within Wuhan, China. *Annals of Oncology* 2020.

16. Zhang J-j, Dong X, Cao Y-y, Yuan Y-d, Yang Y-b, Yan Y-q, et al. Clinical characteristics of 140 patients infected with SARS-CoV-2 in Wuhan, China. *Allergy* 2020.
17. Arentz M, Yim E, Klaff L, Lokhandwala S, Riedo FX, Chong M, et al. Characteristics and outcomes of 21 critically ill patients with COVID-19 in Washington State. *Jama* 2020;323(16):1612-1614.
18. Wang Y, Liu Y, Liu L, Wang X, Luo N, Li L. Clinical outcomes in 55 patients with severe acute respiratory syndrome coronavirus 2 who were asymptomatic at hospital admission in shenzhen, china. *The Journal of Infectious Diseases* 2020;221(11):1770-1774.
19. Breslin N, Baptiste C, Miller R, Fuchs K, Goffman D, Gyamfi-Bannerman C, et al. COVID-19 in pregnancy: early lessons. *American journal of obstetrics & gynecology MFM* 2020:100111.
20. Zhang H, Wang X, Fu Z, Luo M, Zhang Z, Zhang K, et al. Potential factors for prediction of disease severity of COVID-19 patients. *Med Rxiv* 2020.
21. Rubin SJ, Falkson SR, Degner NR, Blish C. Clinical characteristics associated with COVID-19 severity in California. *Journal of Clinical and Translational Science* 2020:1-4.
22. Li X, Xu S, Yu M, Wang K, Tao Y, Zhou Y, et al. Risk factors for severity and mortality in adult COVID-19 inpatients in Wuhan. *Journal of Allergy and Clinical Immunology* 2020.
23. Huang Y, Zhou H, Yang R, Xu Y, Feng X, Gong P. Clinical characteristics of 36 non-survivors with COVID-19 in Wuhan, China. *medRxiv* 2020.
24. Zhang G, Hu C, Luo L, Fang F, Chen Y, Li J, et al. Clinical features and outcomes of 221 patients with COVID-19 in Wuhan, China. *MedRxiv* 2020.
25. Lian J, Jin X, Hao S, Cai H, Zhang S, Zheng L, et al. Analysis of Epidemiological and Clinical features in older patients with Corona Virus Disease 2019 (COVID-19) out of Wuhan. *Clinical Infectious Diseases* 2020.
26. Wang D, Hu B, Hu C, Zhu F, Liu X, Zhang J, et al. Clinical characteristics of 138 hospitalized patients with 2019 novel coronavirus–infected pneumonia in Wuhan, China. *Jama* 2020;323(11):1061-1069.
27. Li Y-K, Peng S, Li L-Q, Wang Q, Ping W, Zhang N, et al. Clinical and transmission characteristics of Covid-19—a retrospective study of 25 cases from a single thoracic surgery department. *Current Medical Science* 2020:1-6.
28. Li X, Wang L, Yan S, Yang F, Xiang L, Zhu J, et al. Clinical characteristics of 25 death cases with COVID-19: a retrospective review of medical records in a single medical center, Wuhan, China. *International Journal of Infectious Diseases* 2020.
29. Guan W-j, Ni Z-y, Hu Y, Liang W-h, Ou C-q, He J-x, et al. Clinical characteristics of coronavirus disease 2019 in China. *New England journal of medicine* 2020;382(18):1708-1720.
30. Huang Y, Tu M, Wang S, Chen S, Zhou W, Chen D, et al. Clinical characteristics of laboratory confirmed positive cases of SARS-CoV-2 infection in Wuhan, China: A retrospective single center analysis. *Travel medicine and infectious disease* 2020.
31. Huang C, Wang Y, Li X, Ren L, Zhao J, Hu Y, et al. Clinical features of patients infected with 2019 novel coronavirus in Wuhan, China. *The lancet* 2020;395(10223):497-506.
32. Liu K, Fang Y-Y, Deng Y, Liu W, Wang M-F, Ma J-P, et al. Clinical characteristics of novel coronavirus cases in tertiary hospitals in Hubei Province. *Chinese medical journal* 2020.
33. Mo P, Xing Y, Xiao Y, Deng L, Zhao Q, Wang H, et al. Clinical characteristics of refractory COVID-19 pneumonia in Wuhan, China. *Clinical Infectious Diseases* 2020.
34. Hu L, Chen S, Fu Y, Gao Z, Long H, Ren H-w, et al. Risk factors associated with clinical outcomes in 323 COVID-19 patients in Wuhan, China. *Medrxiv* 2020.

35. Xu X, Chen P, Wang J, Feng J, Zhou H, Li X, et al. Evolution of the novel coronavirus from the ongoing Wuhan outbreak and modeling of its spike protein for risk of human transmission. *Science China Life Sciences* 2020;63(3):457-460.
36. Yang X, Yu Y, Xu J, Shu H, Liu H, Wu Y, et al. Clinical course and outcomes of critically ill patients with SARS-CoV-2 pneumonia in Wuhan, China: a single-centered, retrospective, observational study. *The Lancet Respiratory Medicine* 2020.
37. Zhou F, Yu T, Du R, Fan G, Liu Y, Liu Z, et al. Clinical course and risk factors for mortality of adult inpatients with COVID-19 in Wuhan, China: a retrospective cohort study. *The lancet* 2020.
38. Zhang H, Wang L, Chen Y, Shen X, Wang Q, Yan Y, et al. A Multicentre Study of Coronavirus Disease 2019 Outcomes of Cancer Patients in Wuhan, China.
39. Wang L, He W, Yu X, Hu D, Bao M, Liu H, et al. Coronavirus disease 2019 in elderly patients: Characteristics and prognostic factors based on 4-week follow-up. *Journal of Infection* 2020.
40. Guan W-j, Liang W-h, Zhao Y, Liang H-r, Chen Z-s, Li Y-m, et al. Comorbidity and its impact on 1590 patients with Covid-19 in China: A Nationwide Analysis. *European Respiratory Journal* 2020;55(5).
41. Liang W, Guan W, Chen R, Wang W, Li J, Xu K, et al. Cancer patients in SARS-CoV-2 infection: a nationwide analysis in China. *Lancet Oncol* 2020;21(3):335-337.
42. Tian S, Hu W, Niu L, Liu H, Xu H, Xiao S-Y. Pulmonary pathology of early phase 2019 novel coronavirus (COVID-19) pneumonia in two patients with lung cancer. *Journal of Thoracic Oncology* 2020.
43. Yu J, Ouyang W, Chua ML, Xie C. SARS-CoV-2 transmission in patients with cancer at a tertiary care hospital in Wuhan, China. *JAMA oncology* 2020.
44. Zhao Q, Meng M, Kumar R, Wu Y, Huang J, Lian N, et al. The impact of COPD and smoking history on the severity of Covid-19: a systemic review and meta-analysis. *Journal of medical virology* 2020.
45. Lippi G, Henry BM. Chronic obstructive pulmonary disease is associated with severe coronavirus disease 2019 (COVID-19). *Respiratory Medicine* 2020;167:105941.
46. Alqahtani JS, Oyelade T, Aldhahir AM, Alghamdi SM, Almeahadi M, Alqahtani AS, et al. Prevalence, severity and mortality associated with COPD and smoking in patients with COVID-19: a rapid systematic review and meta-analysis. *PloS one* 2020;15(5):e0233147.
47. Emami A, Javanmardi F, Pirbonyeh N, Akbari A. Prevalence of underlying diseases in hospitalized patients with COVID-19: a systematic review and meta-analysis. *Archives of academic emergency medicine* 2020;8(1).
48. Brake SJ, Barnsley K, Lu W, McAlinden KD, Eapen MS, Sohal SS. Smoking upregulates angiotensin-converting enzyme-2 receptor: a potential adhesion site for novel coronavirus SARS-CoV-2 (Covid-19)
49. Coutard B, Valle C, de Lamballerie X, Canard B, Seidah N, Decroly E. The spike glycoprotein of the new coronavirus 2019-nCoV contains a furin-like cleavage site absent in CoV of the same clade. *Antiviral research* 2020;176:104742.
50. Kuba K, Imai Y, Rao S, Gao H, Guo F, Guan B, et al. A crucial role of angiotensin converting enzyme 2 (ACE2) in SARS coronavirus-induced lung injury. *Nature medicine* 2005;11(8):875-879.
51. Imai Y, Kuba K, Rao S, Huan Y, Guo F, Guan B, et al. Angiotensin-converting enzyme 2 protects from severe acute lung failure. *Nature* 2005;436(7047):112-116.
52. Abrams EM, W't Jong G, Yang CL. Asthma and COVID-19. *CMAJ* 2020;192(20):E551-E551.
53. Goyal P, Choi JJ, Pinheiro LC, Schenck EJ, Chen R, Jabri A, et al. Clinical Characteristics of Covid-19 in New York City. *New England Journal of Medicine* 2020.
54. Shaker MS, Oppenheimer J, Grayson M, Stukus D, Hartog N, Hsieh EW, et al. COVID-19: pandemic contingency planning for the allergy and immunology clinic. *The Journal of Allergy and Clinical Immunology: In Practice* 2020.

55. Peters MC, Sajuthi S, Deford P, Christenson S, Rios CL, Montgomery MT, et al. COVID-19 Related genes in sputum cells in asthma: relationship to demographic features and corticosteroids. *American Journal of Respiratory and Critical Care Medicine* 2020(ja).
56. Johnston SL. Asthma and COVID-19: is asthma a risk factor for severe outcomes? *Allergy* 2020.
57. Konopka KE, Wilson A, Myers JL. Postmortem lung findings in an asthmatic with coronavirus disease 2019 (COVID-19). *Chest* 2020.
58. Passaro A, Peters S, Mok TS, Attili I, Mitsudomi T, de Marinis F. Testing for COVID-19 in lung cancer patients. *Annals of Oncology* 2020.
59. Yang J, Zheng Y, Gou X, Pu K, Chen Z, Guo Q, et al. Prevalence of comorbidities and its effects in patients infected with SARS-CoV-2: a systematic review and meta-analysis. *International Journal of Infectious Diseases* 2020;94:91-95.

Table Legends:

Table 1: Characteristics of Included Studies on Lung Comorbidities among COVID-19 patients

Figure Legends:

Fig1. PRISMA flow chart of the systematic literature review and article identification.

Fig 2: Prevalence of asthma among patients hospitalized with COVID-19.

Fig 3: Prevalence of COPD among patients hospitalized with COVID-19.

Fig 4: Prevalence of lung cancer among patients hospitalized with COVID-19.

Fig 5: Funnel plot for meta-analysis of the prevalence of underlying diseases in COVID-19 infected cases.