

Trends in Medicare Reimbursement, Use Rates, and Overall Expenditure for Skin Cancer Procedures: 2012-2017

Pranav Puri¹, Sujith Baliga², Mark R. Pittelkow¹, Shari A. Ochoa¹, Puneet K. Bhullar¹, Aaron R. Mangold^{1*}

¹ Mayo Clinic – Scottsdale, AZ, USA

²The Ohio State University-Columbus, OH, USA

*** Corresponding Author:**

Aaron Mangold, MD

Mayo Clinic, Department of Dermatology

13400 E Shea Blvd, Scottsdale, AZ 85259

Email: mangold.aaron@mayo.edu

Phone: 480-301-8508

Funding: There were no funding sources for this manuscript

Conflicts of Interest: The authors declare that they have no conflict of interest and no financial disclosure.

Keywords: Skin Cancer, Medicare Reimbursement, Utilization, Mohs Micrographic Surgery

This study has not previously been presented elsewhere.

Word Count:

Table Count: 2

Figure Count: 3

Abstract:

The treatment of skin cancers represents a growing share of healthcare expenditures. At the same time, Medicare reimbursement rates for physician services have declined with respect to inflation. The objective of this study was to describe the economic effects of declining Medicare reimbursement for skin cancer procedures. In this ecological study, we used the Medicare Physician Supplier and Other Provider Public Use File (POSPUF) to analyze trends in Medicare reimbursement rates, use rates, and overall Medicare expenditures for skin cancer procedures from 2012 to 2017. We adjusted reimbursement rates for inflation by converting payment amounts into units of 2017 dollars. From 2012 to 2017, overall inflation-adjusted Medicare expenditure on skin cancer procedures increased 9%. Over this time period, inflation-adjusted Medicare reimbursement rates declined for each procedure class, with the exception of shave excision. Concurrently, the use rate of Mohs micrographic surgery increased 23%, while the use rate for all other skin cancer procedure classes declined. In summary, this study describes trends suggesting declining Medicare reimbursement rates have been associated with increasing use rates for higher cost skin cancer procedures. Clinicians and policy makers should collaborate to develop value-based payment models that incentivize patient outcomes rather than procedural volumes.

Introduction:

Skin cancers are the most common malignancy in the United States, and account for more than 8 billion dollars of health expenditure in the United States annually.¹ Furthermore, due to an aging population, the incidence of skin cancers in the United States continues to rise.² Given these trends, the treatment of skin cancers represents a growing share of national healthcare expenditure.¹ In addition to topical chemotherapy, procedural treatments for skin cancers include Mohs micrographic surgery (MMS), simple surgical excision, shave excision, as well as destructive modalities including laser surgery, electrosurgery, and cryosurgery. Each of these treatment modalities differs with respect to cost, cure rate, and risk of recurrence.³

Medicare is the largest healthcare payer in the United States, and Medicare reimbursement rates often serve as the starting point for negotiation with private payers.⁴ In an attempt to contain growing healthcare expenditures, policymakers have curbed Medicare reimbursement per relative value unit (RVU) over the past 20 years.⁵ Over this time period, however, the United States economy has had general inflation of more than 50%, leading to increased operating costs for physicians.⁶ Taken together, these trends raise an important question: what are the economic effects of declining Medicare reimbursement rates on skin cancer treatments? Do declining reimbursement rates incentivize increased utilization, or conversely, reduce access to necessary treatment? Do they incentivize use of higher cost treatment modalities instead of lower cost options?

Prior studies have described trends in the use of skin cancer procedures.³ Similarly, other studies have separately described the costs of skin cancer procedures.⁷ However, to the best of

our knowledge, no study to date has described the relationship between procedure reimbursement rates and corresponding use rates. The purpose of this study was to quantify trends in Medicare reimbursement and use rates for skin cancer procedures from 2012 to 2017. The primary aim of this study is to describe the relationship between reimbursement rates, use rates, and overall Medicare expenditure on skin cancer procedures.

Methods:

The Medicare Physician Supplier and Other Provider Public Use File (POPSUF) provides reimbursement and utilization data on all services and procedures provided to Medicare fee-for-service beneficiaries.⁸ HCPCS codes for the following procedure classes were queried from the CMS Physician Fee Schedule: simple excision, MMS, shave excision, and destruction of malignant lesions (destruction of malignant lesions includes laser surgery, electrosurgery, cryosurgery, chemosurgery, surgical curettement). HCPCS codes for benign lesions were excluded from this analysis. The HCPCS codes used in this analysis are listed in Table 1. Using the Medicare POPSUF, we aggregated the volume of services, number of providers, unique patient-provider interactions, and average Medicare reimbursement, for each HCPCS code from January 2012 to December 2017. We adjusted reimbursement rates for inflation by converting payment amounts into units of 2017 dollars. For each HCPCS code, we estimated total Medicare expenditure by multiplying the average Medicare reimbursement by the volume of services. We calculated aggregate data for each procedure class. The number of providers for each procedure class was estimated by averaging the number of providers for each HCPCS code within the procedure class. The number of unique patient-provider interactions was calculated by summing

the number of interactions for each HCPCS code within the procedure class. Total Medicare expenditure for each procedure class was calculated by summing the total Medicare expenditure on each HCPCS code within the procedure class. Total use rate was calculated by summing the number of services for each HCPCS code within the procedure class. The average payment for each procedure class was calculated by dividing total Medicare expenditure by the total use rate for each procedure class. Annual overall Medicare expenditure for skin cancer surgery was estimated by summing the total expenditures for each procedure class.

This study was exempt from IRB review as the dataset is publicly available and contains no patient identifiers. Data analysis was conducted using JMP version 14.

Results:

The results of our analysis are summarized in Table 2. From 2012 to 2017, MMS had the highest average Medicare reimbursement, whereas shave excision had the lowest average Medicare reimbursement. Over this time period, inflation-adjusted reimbursement rates declined for each procedure class with the exception of shave excision. The use rates of simple excisions, shave excisions, and destruction of malignant lesions declined from 2012 to 2017. However, the use rate of MMS increased 23% from 1,170,682 services in 2012 to 1,440,886 in 2017 (Figure 1). Similarly, over this time period, the number of unique patient-provider interactions declined for simple excisions, shave excisions, and destruction of malignant lesions. However, the number of unique patient-provider interactions for MMS increased 28% from 798,295 in 2012 to 1,024,639 in 2017.

From 2012 to 2017, total inflation-adjusted Medicare expenditure on simple excisions decreased 14%, and declined 11% for destruction of malignant lesions. During the same time period, total inflation-adjusted Medicare expenditure on MMS increased 18%, and increased 16% for shave excision (Figure 1).

Overall inflation-adjusted Medicare expenditure for skin cancer procedures increased 9% from \$743,222,614 in 2012 to \$806,392,161 in 2017. Concurrently, inflation-adjusted Medicare expenditure on Mohs surgery increased by \$83,363,703 (Figure 2). In addition, expenditure on MMS represented 61% of overall Medicare skin cancer procedure spending in 2012 and this proportion increased to 67% in 2017.

Discussion:

This study describes the most recent trends in Medicare reimbursement rates, use rates, and overall Medicare expenditure for skin cancer procedures. From 2012 to 2017, overall inflation-adjusted Medicare expenditure on skin cancer procedures increased 9%. This increase was primarily driven by a 23% increase in the use rate of MMS. However, during the same time period, use rates for simple excisions, shave excisions, and destruction of malignant lesions all declined. These trends suggest that increased use of MMS replaced use of lower reimbursement modalities.

Average Medicare reimbursement for MMS HCPCS codes (\$372.88 in 2017) was markedly higher than for other classes of skin cancer procedures. Therefore, from an economic perspective, Medicare reimbursement rates incentivized the use of MMS in relation to other

treatment modalities. Previous studies have described wide variation in use rates and practice patterns amongst Mohs surgeons, prompting the American College of Mohs Surgery to develop appropriate use criteria (AUC) for MMS in 2012.⁹⁻¹¹ Yet, the results of this study suggest that the use rate of MMS continued to increase despite the adoption of AUC. However, numerous factors beyond economic incentives may have also contributed to this trend. For one, the aging population of the United States has led to a 33% increase in non-melanoma skin cancer cases over the last 10 years.² In addition, MMS provides more precise treatment with higher cure rates, thus the increased use of MMS may represent improved standards of care.¹²

The findings of this study have important implications for dermatologists and policy makers. In light of increasing national healthcare expenditures, policy makers have sought to slow spending growth, at least in part, by reducing physician reimbursement rates with respect to inflation. Yet, the trends described in this study suggest that reducing reimbursement rates may, in fact, incentivize increased use of high cost procedures and lead to increased overall healthcare expenditures. We describe the incentives created by Medicare's existing fee-for-service payment model in Figure 3. Moreover, the findings of this study underscore the importance of adopting value-based payment models that link reimbursement to patient outcomes, rather than the volume of procedures.¹³ In order to build value-based payment models, dermatologists must first define the optimal treatment modalities for different subsets of skin cancer patients.¹⁴ To date, only one randomized controlled clinical trials has been performed comparing MMS to wide local excision for basal cell carcinoma. This study did not show statistically significant reductions in recurrence rates with MMS.¹⁵ Additional studies are needed to compare different treatment modalities head to head.

The results of this study should be considered in the context of several limitations. First, this study reports trends from administrative claims data, and as such, did not incorporate clinical data including patient or tumor characteristics. Second, due to the ecological design of this study, the trends we describe should not be interpreted as causal. To the same end, the trends we describe should be considered in light of the United States' changing population age structure and increasing incidence of non-melanoma skin cancers. Third, the design of this study did not account for the use of non-procedural treatment modalities such as topical medications or radiation therapy. Fourth, this study did not account for ancillary costs associated with skin cancer treatment procedures such as facility charges and pathology charges.

In summary, this study describes trends suggesting declining Medicare reimbursement rates have been associated with increasing use rates for higher cost skin cancer procedures. This has resulted in overall inflation-adjusted spending growth on skin cancer procedures for Medicare. Therefore, clinicians and policy makers should collaborate to develop value-based payment models that incentivize patient outcomes rather than procedural volumes.

References:

1. Lim HW, Collins SAB, Resneck JS, et al. The burden of skin disease in the United States. *J Am Acad Dermatol*. 2017;76(5):958-972.e952.
2. Collaboration GBoDC. Global, Regional, and National Cancer Incidence, Mortality, Years of Life Lost, Years Lived With Disability, and Disability-Adjusted Life-Years for 29 Cancer Groups, 1990 to 2017: A Systematic Analysis for the Global Burden of Disease Study. *JAMA Oncology*. 2019;5(12):1749-1768.
3. Wang DM, Morgan FC, Besaw RJ, Schmults CD. An ecological study of skin biopsies and skin cancer treatment procedures in the United States Medicare population, 2000 to 2015. *J Am Acad Dermatol*. 2018;78(1):47-53.

4. Frakt AB. How much do hospitals cost shift? A review of the evidence. *The Milbank quarterly*. 2011;89(1):90-130.
5. Coffron M. Medicare physician payment on the decline: It's not your imagination. In. *Bulletin of American College of Surgeons: American College of Surgeons*; 2019.
6. Tseng P, Kaplan RS, Richman BD, Shah MA, Schulman KA. Administrative Costs Associated With Physician Billing and Insurance-Related Activities at an Academic Health Care System. *JAMA*. 2018;319(7):691-697.
7. Rogers HW, Coldiron BM. Analysis of skin cancer treatment and costs in the United States Medicare population, 1996-2008. *Dermatol Surg*. 2013;39(1 Pt 1):35-42.
8. Medicare Provider Utilization and Payment Data: Physician and Other Supplier. 2012-2017. <https://www.cms.gov/Research-Statistics-Data-and-Systems/Statistics-Trends-and-Reports/Medicare-Provider-Charge-Data/Physician-and-Other-Supplier>. Accessed March 08, 2020.
9. Krishnan A, Xu T, Hutfless S, et al. Outlier Practice Patterns in Mohs Micrographic Surgery: Defining the Problem and a Proposed Solution. *JAMA Dermatol*. 2017;153(6):565-570.
10. Lee MP, Sobanko JF, Shin TM, et al. Evolution of Excisional Surgery Practices for Melanoma in the United States. *JAMA Dermatology*. 2019;155(11):1244-1251.
11. Connolly SM, Baker DR, Coldiron BM, et al. AAD/ACMS/ASDSA/ASMS 2012 appropriate use criteria for Mohs micrographic surgery: a report of the American Academy of Dermatology, American College of Mohs Surgery, American Society for Dermatologic Surgery Association, and the American Society for Mohs Surgery. *J Am Acad Dermatol*. 2012;67(4):531-550.
12. Cohen DK, Goldberg DJ. Mohs Micrographic Surgery: Past, Present, and Future. *Dermatol Surg*. 2019;45(3):329-339.
13. Ogbechie-Godec OA, Mostaghimi A, Nambudiri VE. Skin in the game: Existing and upcoming physician payment models in dermatology. *Journal of the American Academy of Dermatology*. 2018;79(1):175-177.
14. Miller CJ, Giordano CN, Higgins HW, II. Mohs Micrographic Surgery for Melanoma: As Use Increases, So Does the Need for Best Practices. *JAMA Dermatology*. 2019;155(11):1225-1226.
15. Smeets NW, Krekels GA, Ostertag JU, et al. Surgical excision vs Mohs' micrographic surgery for basal-cell carcinoma of the face: randomised controlled trial. *Lancet*. 2004;364(9447):1766-1772.

Table 1:

Procedure	HCPCS Codes
Simple excision (malignant)	11600-11646
Mohs Surgery	17311 & 17313 (base), 17312,17314,17315 (add-ons)
Shave excision	11300-11313
Destruction of malignant lesions*	17260-17286

*Destruction of malignant lesions includes laser surgery, electrosurgery, cryosurgery, chemosurgery, surgical curettement, etc.

Table 2:

	# of Services	Number of Providers	Number of Unique Patient Provider Interactions	Inflation Adjusted Average Medicare Payment	Inflation Adjusted Total Medicare Expenditure	Inflation Adjusted Overall Medicare Skin Cancer Surgery Expenditure	Share of Overall Medicare Skin Cancer Surgery Expenditure
Simple Excision							
2012	809,216	5,121	728,192	\$155.32	\$125,686,685	\$743,222,614	17%
2013	806,413	5,029	776,335	\$152.73	\$123,164,770	\$765,640,334	16%
2014	800,086	4,908	722,099	\$147.24	\$117,809,702	\$757,342,759	16%
2015	793,094	4,754	718,586	\$147.24	\$116,779,467	\$792,069,533	15%
2016	801,283	4,658	725,952	\$143.98	\$115,375,675	\$824,099,471	14%
2017	784,840	4,515	712,234	\$137.81	\$108,158,113	\$806,392,161	13%
Mohs Surgery							
2012	1,170,682	990	798,295	\$387.45	\$453,582,606	\$743,222,614	61%
2013	1,227,926	1,034	1,000,589	\$378.17	\$464,361,335	\$765,640,334	61%
2014	1,250,876	1,051	868,231	\$373.36	\$467,033,139	\$757,342,759	62%
2015	1,316,146	1,097	923,441	\$380.97	\$501,418,473	\$792,069,533	63%
2016	1,415,383	1,131	994,788	\$379.41	\$537,016,751	\$824,099,471	65%
2017	1,440,886	1,168	1,024,639	\$372.88	\$537,272,681	\$806,392,161	67%
Shave Excision							
2012	922,097	4,267	678,690	\$59.01	\$54,413,148	\$743,222,614	7%
2013	933,443	4,216	790,790	\$75.12	\$70,117,437	\$765,640,334	9%
2014	928,202	4,153	686,283	\$73.03	\$67,785,854	\$757,342,759	9%
2015	911,051	4,080	682,106	\$74.63	\$67,988,970	\$792,069,533	9%
2016	920,578	4,061	693,034	\$73.32	\$67,490,623	\$824,099,471	8%
2017	891,386	3,986	672,391	\$70.83	\$63,137,492	\$806,392,161	8%
Destruction of Malignant Lesion							
2012	881,705	2,347	736,175	\$124.24	\$109,540,173	\$743,222,614	15%
2013	883,964	2,407	804,612	\$122.18	\$107,996,792	\$765,640,334	14%
2014	892,372	2,482	747,950	\$117.34	\$104,714,061	\$757,342,759	14%

2015	896,669	2,506	750,044	\$118.08	\$105,882,620	\$792,069,533	13%
2016	915,288	2,538	752,151	\$113.87	\$104,216,421	\$824,099,471	13%
2017	879,437	2,586	734,922	\$111.23	\$97,823,872	\$806,392,161	12%

Figure 1:

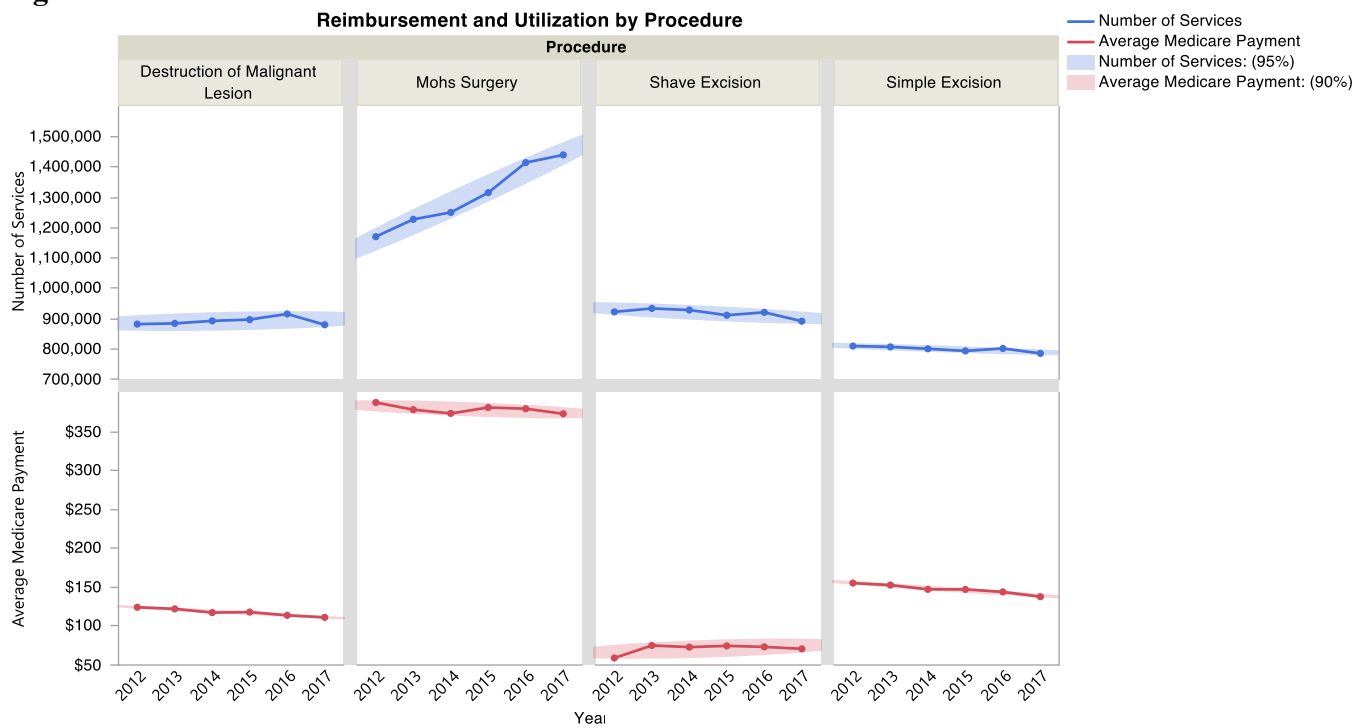


Figure 2:

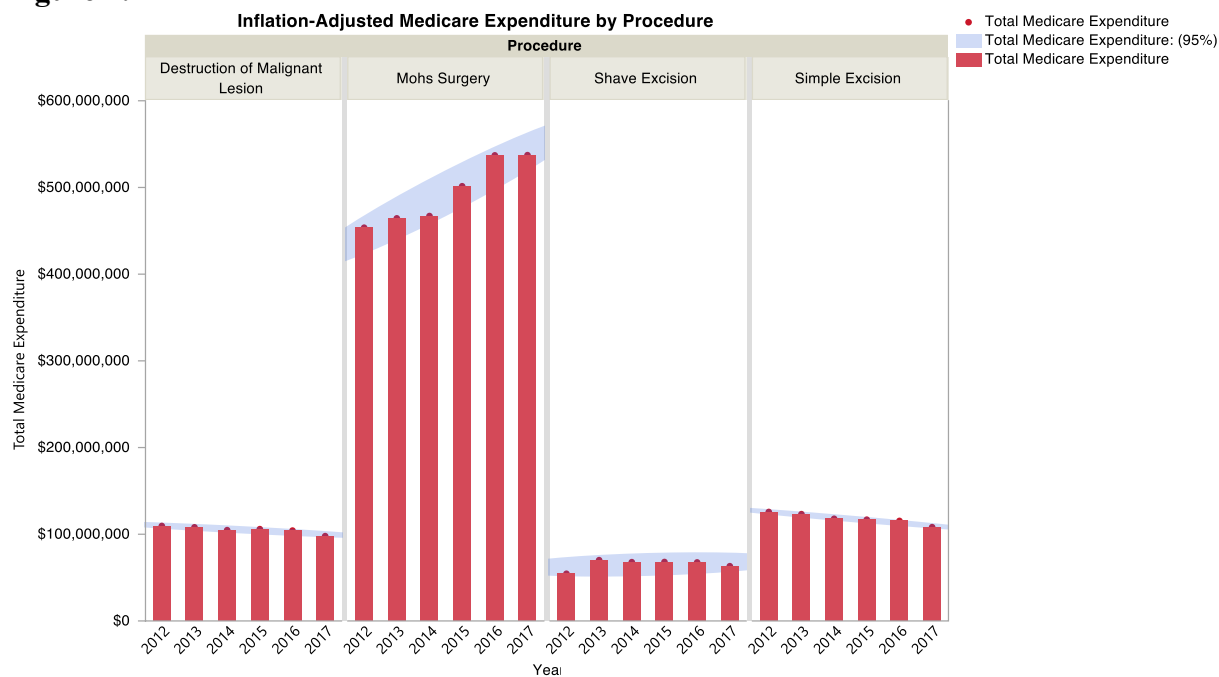
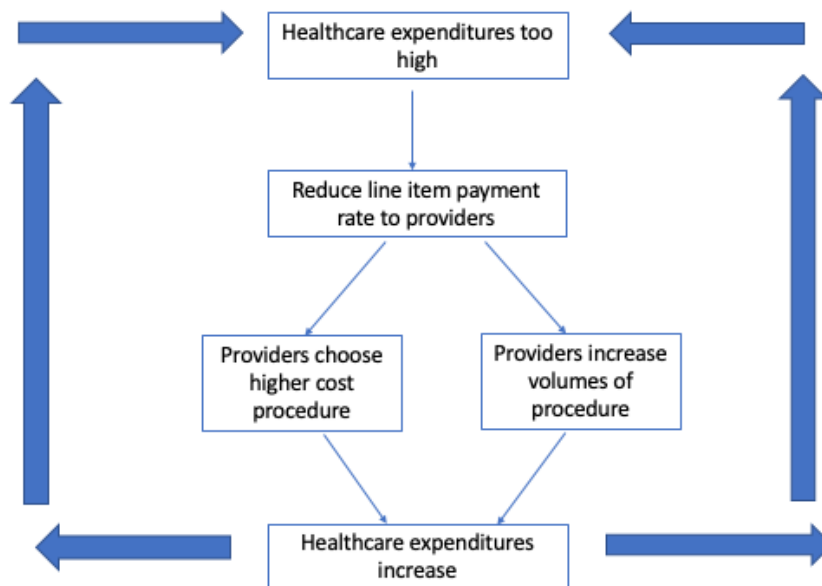


Figure 3:



****Figure adapted from Dr. Denis Cortese with permission****

Appendix: Nominal Data

	# of Services	# of Services	Number of Providers	Nominal Average Medicare Payment	Nominal Total Medicare Expenditure	Nominal Overall Medicare Skin Cancer Surgery Expenditure	Share of Overall Medicare Skin Cancer Surgery Expenditure
Simple Excision							
2012	809,216	809,216	5,121	\$145.16	\$117,464,192	\$694,600,574	17%
2013	806,413	806,413	5,029	\$145.46	\$117,299,781	\$729,181,270	16%
2014	800,086	800,086	4,908	\$141.58	\$113,278,560	\$728,214,191	16%
2015	793,094	793,094	4,754	\$141.58	\$112,287,949	\$761,605,320	15%
2016	801,283	801,283	4,658	\$139.79	\$112,015,218	\$800,096,574	14%
2017	784,840	784,840	4,515	\$137.81	\$108,158,113	\$806,392,161	13%
Mohs Surgery							
2012	1,170,682	1,170,682	990	\$362.10	\$423,908,978	\$694,600,574	61%
2013	1,227,926	1,227,926	1,034	\$360.16	\$442,248,890	\$729,181,270	61%
2014	1,250,876	1,250,876	1,051	\$359.00	\$449,070,326	\$728,214,191	62%
2015	1,316,146	1,316,146	1,097	\$366.32	\$482,133,147	\$761,605,320	63%
2016	1,415,383	1,415,383	1,131	\$368.36	\$521,375,486	\$800,096,574	65%
2017	1,440,886	1,440,886	1,168	\$372.88	\$537,272,681	\$806,392,161	67%
Shave Excision							
2012	922,097	922,097	4,267	\$55.15	\$50,853,409	\$694,600,574	7%
2013	933,443	933,443	4,216	\$71.54	\$66,778,511	\$729,181,270	9%
2014	928,202	928,202	4,153	\$70.22	\$65,178,706	\$728,214,191	9%
2015	911,051	911,051	4,080	\$71.76	\$65,374,010	\$761,605,320	9%
2016	920,578	920,578	4,061	\$71.18	\$65,524,877	\$800,096,574	8%
2017	891,386	891,386	3,986	\$70.83	\$63,137,492	\$806,392,161	8%
Destruction of Malignant Lesion							
2012	881,705	881,705	2,347	\$116.11	\$102,373,993	\$694,600,574	15%
2013	883,964	883,964	2,407	\$116.36	\$102,854,088	\$729,181,270	14%
2014	892,372	892,372	2,482	\$112.83	\$100,686,597	\$728,214,191	14%
2015	896,669	896,669	2,506	\$113.54	\$101,810,212	\$761,605,320	13%

2016	915,288	915,288	2,538	\$110.55	\$101,180,991	\$800,096,574	13%
2017	879,437	879,437	2,586	\$111.23	\$97,823,872	\$806,392,161	12%