

1 Utility of Pan-Family Assays for Rapid Viral
2 Screening: *Reducing Delays in Public Health*
3 *Responses During Pandemics*

4

5 Michael Erlichster^{1*}, Gursharan Chana^{1,2}, Daniela Zantomio³, Benjamin

6 Goudey^{4,5}, Efstratios Skafidas^{1,6}

7

8 ¹ MX3 Diagnostics, Melbourne, Victoria, Australia

9 ² Department of Medicine, Royal Melbourne Hospital, University of Melbourne, Melbourne,
10 Victoria, Australia

11 ³ Department of Haematology, Austin Health, Heidelberg, Victoria, Australia

12 ⁴ IBM Research Australia, Southbank, Victoria, Australia.

13 ⁵ Centre for Epidemiology and Biostatistics, The University of Melbourne, Melbourne,
14 Victoria, Australia

15 ⁶ Department of Electrical and Electronic Engineering, Melbourne School of Engineering,
16 The University of Melbourne, Melbourne, Victoria, Australia

17

18 *Corresponding Author. Email erlichster@mx3diagnostics.com

19 Summary

20 Background

21 The SARS-CoV-2 pandemic has highlighted deficiencies in the testing capacity of many
22 developed countries during the early stages of emerging pandemics. Here we describe the
23 potential for pan-family viral assays to improve early accessibility of large-scale nucleic acid
24 testing.

25 Methods

26 Coronaviruses and SARS-CoV-2 were used as a case-study for investigating the utility of pan-
27 family viral assays during the early stages of a novel pandemic. Specificity of a pan-
28 coronavirus (Pan-CoV) assay for viral detection was assessed using the frequency of common
29 human coronavirus (HCoV) species in key populations. A reported Pan-CoV assay was
30 assessed to determine sensitivity to SARS-CoV-2 and 59 other coronavirus species. The
31 resilience of the primer target regions of this assay to mutation was assessed in 8893 high
32 quality SARS-CoV-2 genomes to predict ongoing utility during pandemic progression.

33 Findings

34 Due to infection with common HCoV species, a Pan-CoV assay would return a false positive
35 for as few as 1% of asymptomatic adults, but up to 30% of immunocompromised patients
36 displaying symptoms of respiratory disease. Two of the four reported pan-coronavirus assays
37 would have identified SARS-CoV-2 and we demonstrate that with small adjustments to the
38 primers, these assays can accommodate novel variation observed in animal coronaviruses. The
39 assay target region of one well established Pan-CoV assay is highly resistant to mutation
40 compared to regions targeted by other widely applied SARS-CoV-2 RT-PCR assays.

41

42

43 **Interpretation**

44 Pan-family assays have the potential to greatly assist management of emerging public health
45 emergencies through prioritization of high-resolution testing or isolation measures, despite
46 limitations in test specificity due to cross-reactivity with common pathogens. Targeting highly
47 conserved genomic regions make pan-family assays robust and resilient to mutation of a given
48 virus. This approach may be applicable to other viral families and has utility as part of a
49 strategic stockpile of tests maintained to better contain spread of novel diseases prior to the
50 widespread availability of specific assays.

51 Introduction

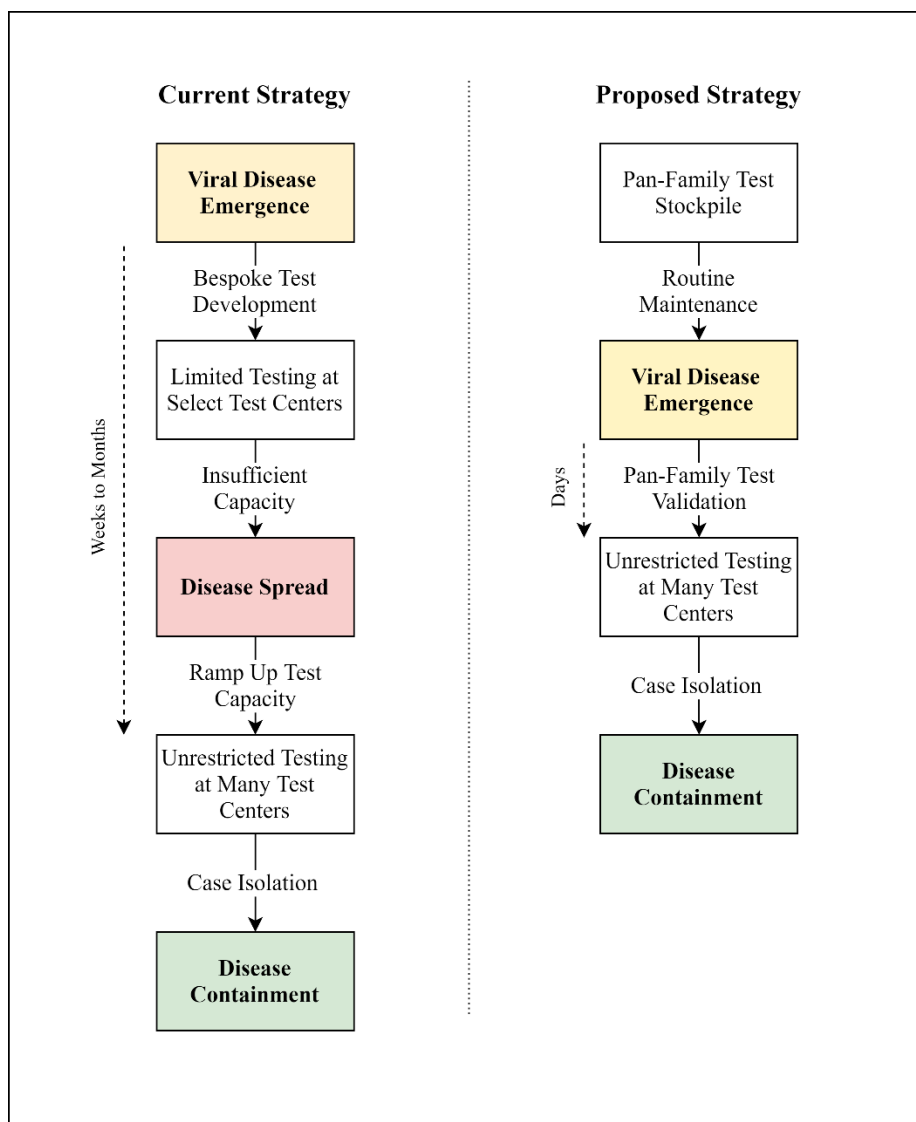
52 During the early stages of the severe acute respiratory syndrome coronavirus 2 (SARS-CoV-
53 2) pandemic many countries exhibited an extreme shortage of SARS-CoV-2 nucleic acid test
54 kits. This resulted in a weeks to months-long period where testing could only be performed in
55 a limited capacity at select test centers, with a focus on symptomatic patients with a history of
56 travel or association with a known case. The inability to perform extensive testing was
57 particularly impactful in the current pandemic due to the greater than normal infectivity of
58 asymptomatic patients¹, placing a greater burden on molecular diagnostic tools for identifying
59 and containing disease spread. The precise cause of this shortage has not yet been fully
60 investigated but is likely a combination of the unprecedented global demand for test reagents
61 and equipment, disruption to supply chains caused by the pandemic and regulatory restrictions
62 limiting the ability of some nations to expand test capacity². These shortcomings highlight that
63 the current testing infrastructure and capacity expansion strategies are not rapid enough to
64 counter disease spread during the early stages of some pandemics.

65 In response to SARS-CoV-2, governments will likely invest in a more extensive and agile
66 network of testing equipment, stockpile test reagents and consumables and streamline test
67 certification protocols. While this will greatly enhance the speed at which testing capacity can
68 be increased, there will still be a vital period between the time a novel pathogen emerges and
69 the time that tests are widely available at high capacity, which can hamper efforts to contain
70 disease spread. A strategy which may allow wide-spread testing of novel pathogens in a more-
71 timely manner is the use of pre-emptively developed pan-family assays: molecular diagnostic
72 tests targeted at a family of viruses rather than a single species. Pan-family assays targeting
73 several viral families have been developed for research applications and are routinely used
74 during pathogen characterization and in retrospective epidemiological studies^{3,4}.

75 To reduce the likelihood of severe test shortages in future pandemics, we propose a proactive
76 strategy involving the large-scale stockpiling of pan-family targeted PCR diagnostic kits for
77 use during the early stages of viral pandemics (**Figure 1**). In this strategy, pan-family tests are
78 developed, certified and stockpiled in large volume prior to disease emergence. Following
79 confirmation of test applicability to the novel pathogen, it may then be applied to deliver
80 unrestricted testing while a species-specific test is produced.

81 Here we assess, using coronaviruses and SARS-CoV-2 as a case study, whether pan-family
82 targeted assays are a practical tool for high-throughput screening of infection during the early
83 stages of a pandemic. We consider the frequency of common viral species, the capability of
84 reported pan-family assays to accommodate observed variation and the mutation rate of the
85 pan-family assay target regions. Given the significant global economic and social disruption
86 caused by the SARS-CoV-2 pandemic, we argue that despite some limitations in the specificity
87 and sensitivity of pan-family assays, a strategic stockpile is prudent as a first-line mass-
88 screening technique.

89



90

91 **Figure 1. Current and proposed viral disease testing strategies.** In the current strategy a
92 delay of weeks to months is observed between disease emergence and unrestricted testing,
93 allowing a disease to spread. By using pan-family tests widespread testing is available in a
94 shortened timeframe and disease spread may be contained.

95 Methods

96 **Review of common HCoV epidemiological characteristics**

97 A search using the terms “HCoV” “epidemiology” and “asymptomatic” was performed in
98 PubMed to identify studies describing HCoV infection characteristics. Studies highlighting the
99 following aspects of HCoV infection were selected and summarized; frequency in children or
100 the elderly, frequency in asymptomatic individuals, frequency in large study cohorts and
101 frequency during local epidemics.

102 **Validation and modification of a reported Pan-CoV assays**

103 Coronavirus-family reference sequences were identified and downloaded from the NCBI Virus
104 database⁵. Sequences for a total of 60 species were identified (**Supplementary Table 1**),
105 including the 7 species known to infect humans (HCoV-229E, HCoV-NL63, HCoV-HKU1
106 and HCoV-OC43, SARS-CoV, MERS-CoV and SARS-CoV-2). Pan-coronavirus assay primer
107 targets were derived from four reported assays⁶⁻⁹ and aligned with the SARS-CoV-2 reference
108 genome (NC_045512) to assess consensus between sequences using the Clustal Omega
109 Multiple Sequence Alignment tool¹⁰.

110 The nucleic acid sequence and predicted protein sequence for each species was aligned and
111 assessed for identity with Pan-CoV primer targets using the software package Geneious Prime
112 2020.1.2 (<https://www.geneious.com>). Primers were modified to accommodate observed
113 nucleic acid variation as well as nucleic acid sequences expected from the observed protein
114 variation.

115 **Assessment of the Pan-CoV primer target site mutation rate**

116 Mutation frequency of the Pan-CoV target site was assessed using 8,899 high coverage (<1%
117 N calls and <0.05% unique amino acid mutations) full length (>29,000 base pairs) SARS-CoV-
118 2 genomes downloaded from the GISAID EpiCoV database¹¹. Analysis was performed with

119 the R Biostrings package¹² to identify mismatches in the primer target sites. Three samples
120 were excluded due to missing sequence data in the primer target region.

121 Results

122 Specificity of a Pan-CoV assay to a novel pathogen – impact of endemic coronavirus 123 species

124 A key factor in the utility of pan-family assays is the frequency of common species of the target
125 family in the general population, as these will interfere with the specificity of an assay for the
126 novel pathogen. For the coronavirus family there are 4 endemic and common species that
127 infect humans (HCoV-229E, HCoV -NL63, HCoV-HKU1 and HCoV-OC43), typically
128 causing mild disease but can lead to severe or fatal infections in frail or immunosuppressed
129 patients. It remains to be seen whether the current SARS-CoV-2 pandemic will persist at low
130 levels in the general population following disease control through social distancing, therapeutic
131 measures or acquisition of herd immunity¹³. Non-endemic zoonotic coronavirus species
132 (SARS-CoV, MERS-CoV), while highly pathogenic, would not affect the specificity of a Pan-
133 CoV assay for a novel pathogen as they are not observed at a relevant frequency. However,
134 Pan-CoV assay sensitivity to these pathogens is important as they are informative of species
135 with zoonotic potential.

136

137 **Table 1** summarizes studies reporting the prevalence of common HCoV infection. HCoV
138 infections are typically detected in 2-10% of patients exhibiting acute respiratory illness (ARI),
139 although during local HCoV epidemics frequency of infection may be as high as 30% in
140 symptomatic patients. Additionally, HCoV infections display a seasonality, typically observed
141 in winter months. Children, both experiencing ARI and asymptomatic have a high occurrence
142 of HCoV infection (4-10%). In asymptomatic adults HCoV infection is less well studied, but
143 reported values are lower at ~1%. Studies of seroprevalence of HCoV antibodies indicate that
144 virtually all individuals have had prior exposure to at least one form of coronavirus, with first

145 exposure common in childhood¹⁴. This high frequency of childhood infection may explain the
146 lower prevalence of asymptomatic infection in adults due to a partial acquired immunity¹⁵,
147 though limited data exists describing the immunizing effect of HCoV infection¹⁶.

148

149 Considering the observed frequencies of common coronavirus species (**Table 1**), a Pan-CoV
150 assay would be expected to be sufficiently specific for a novel pathogen to allow for broad
151 population screening, wherein a positive test is used to guide infection controls such as self-
152 isolation. The screening specificity is strongest in asymptomatic adults where only ~1% of the
153 population would be expected to return a false positive due to HCoV infection. Greater caution
154 must be taken in populations with a higher HCoV infection rate such as children, symptomatic
155 patients with comorbidities, or populations experiencing a local HCoV epidemic. Due to
156 relatively high frequency of common HCoV infection in these populations additional follow
157 up testing may be necessary to improve the utility to public health officials.

Study	Population	Observed HCoV infection rates	Ref.
Van der Zalm (2009)	230 respiratory samples routinely collected from 19 children across 6 months	Overall – 8.7% Asymptomatic – 7.7% Symptomatic Samples – 9.1%	17
Gaunt (2010)	11,661 respiratory samples from 7,383 patients as part of routine respiratory virus screening.	Overall – 2.3% Asymptomatic - 1.08% 7-12 months old – 4.86%	18
Prill (2012)	1481 hospitalized children with ACI or fever and 742 controls.	Overall – 7.5% Hospitalized – 7.6% Asymptomatic – 7.1%	19
Cabeca (2013)	1087 respiratory samples from patients with ARI. 50 Asymptomatic controls.	Overall – 7.7% Asymptomatic Adults – 0.0% All ARI patients - 8.1% Patients with Comorbidities – 12.4%	20
Lepiller (2013)	6,014 respiratory samples collected for routine viral diagnostics.	Overall – 5.9% Immunosuppressed Patients– 6.7% During Local Epidemic – ~16%	21
Matoba (2015)	4,342 respiratory samples from pediatric patients with ARTI	Overall – 7.6% During Local Epidemic – 28.5%	22
Zhang (2015)	Meta-analysis of 489,651 patients with ARTI	Overall- 2.6%	23
Yip (2016)	8275 respiratory samples from patents with ARTI	Overall – 0.9% 0-10 years old – 0.9% Over 80 years old - 1.5%	24
Liu (2017)	3,298 respiratory samples from pediatric patients with ARI	Overall – 2.37% During Local Epidemic – 10%	25
Zeng (2017)	11,399 respiratory samples from hospitalized pediatric patients with ARTI	Overall – 4.3% 7-12 months old – 5.9%	26
Killerby (2018)	854,575 HCoV tests from 117 Laboratories as part of routine respiratory virus screening.	Overall – 4.6% During Local Epidemic – 12.4%	27
Heimdal (2019)	3,458 samples from hospitalized pediatric patients with ARTI and 373 samples from controls.	Overall – 9.1% Asymptomatic controls – 10.2% Hospitalized – 9.1%	28

158 **Table 1: Population Frequency of Common HCoV Infection in Highlighted Studies.** ARI

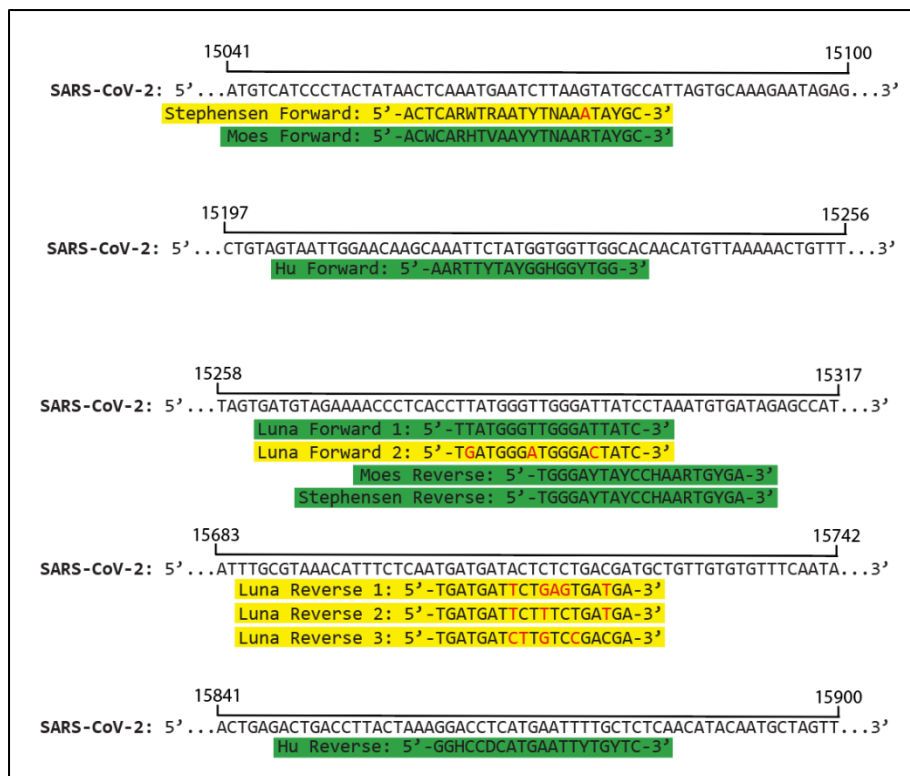
159 – Acute Respiratory Illness. ARTI – Acute Respiratory Throat Infection

160 **Sensitivity of Pan-CoV assays to a novel pathogen – performance of reported assays on**
161 **observed coronavirus species from animal populations**

162 Several consensus reverse-transcription PCR (RT-PCR) assays targeting the highly conserved
163 coronavirus RNA-dependent RNA polymerase gene with a pool of degenerate primers have
164 been previously described for research applications⁶⁻⁹. These assays have been used to identify
165 and analyze previously unknown coronavirus species³ and perform retrospective analysis of
166 clinical samples to assess disease prevalence²⁰.

167 **Figure 2** compares the target sequences of reported Pan-CoV assays with the SARS-CoV-2
168 reference genome. Only 2 of the 4 reported assays tested, the Moes/Vijgen (2005) update of
169 the Stephensen (1999) assay and the recent Hu (2018) assay, accommodate the SARS-CoV-2
170 genome without any primer-template mismatches. While these mismatches may not be
171 sufficient to prevent detection, they are undesirable as they may reduce reaction sensitivity²⁹.
172 This result highlights the importance of routine maintenance of pan-family assays, ensuing
173 degenerate primers accommodate annotated variation from animal populations.

174



175

176 **Figure 2:** Alignment of 4 Reported Pan-Coronavirus Primer Targets and the SARS-CoV-2 Genome.

177 IUPAC nucleotide code used where degenerate primers are reported. Each of the 5 rows shows a

178 different region of the SARS2 genome. Primers with mismatches between target sites and SARS-CoV-

179 2 genome are highlighted in yellow, with mismatches in red. Primers targets with a 100% match to the

180 SARS-CoV-2 genome highlighted in green.

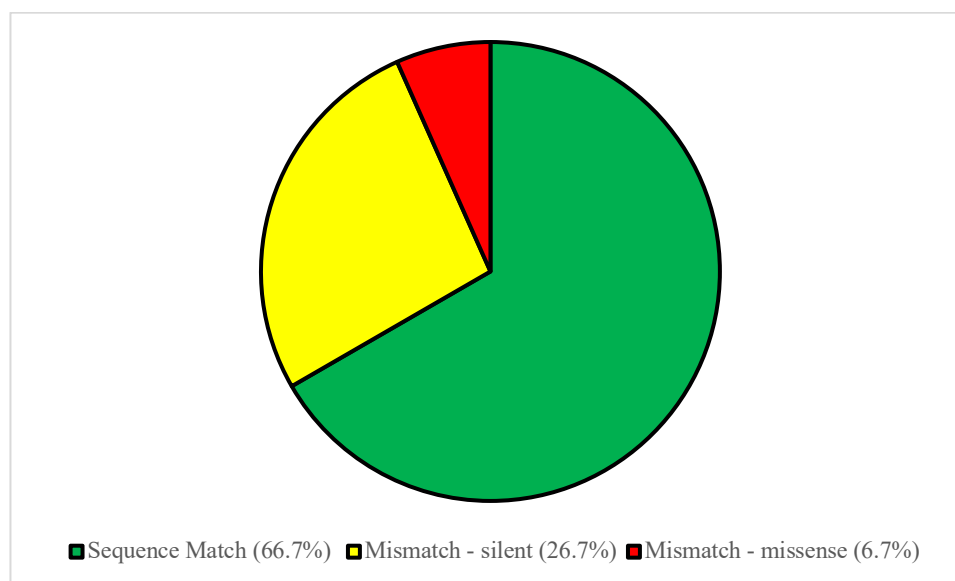
181 In contrast to the other reported Pan-COV assays, the Moes/Vijgen assay (MPC) has a detailed
182 protocol for analysis of respiratory pathogens in human samples⁷. To better predict the
183 sensitivity of this assay to novel pathogens, we compared the MPC primer sequences to the
184 respective primer target sites in the genomes of 60 coronavirus species (**supplementary Table**
185 **2**). The majority of these species were reported following the development of the MPC assay,
186 and as such are informative of the capacity of existing tests to detect novel pathogens.

187

188 Of the 60 coronavirus reference sequences investigated, 20 contained a mismatch between the
189 MPC degenerate primer target and the viral genome, suggesting the MPC assay would be sub-
190 optimal for detection of these species (**Figure 3, Supplementary Table 1**). Of these 20 species,
191 only 4 contained a genomic variant resulting in a change to the amino acid motifs encoded by
192 the target region. (**Supplementary Table 2**). This highlights the importance of accommodating
193 unobserved but likely variation, such as silent mutations, when designing pan-family assays.
194 Indeed, degenerate primers designed given the observed protein motifs of these 60 species
195 (**Supplementary Tables 3**) are identical to those designed from the observed sequence data
196 (**Supplementary Table 4**).

197

198



199

200 **Figure 3:** Sensitivity of the MPC Pan-CoV assay to coronavirus species observed in animal
201 populations. A complete sequence match between the MPC primer target and the genomic
202 sequence is observed for 40/60 (66.7%) of species, with a mismatch caused by a silent
203 mutation observed in 16/60 (26.7%) of species and a mismatch resulting in an amino acid
204 change observed in the remaining 4/60 (6.7%) of species.

205 **Resistance of the MPC target region to mutation**

206 Another application of a robust pan-family assay is as a fallback to protect against reduction in
207 test sensitivity of species-specific assays due to mutation of the viral pathogen during pandemic
208 progression. To assess the resilience of the MPC assay to mutation-derived errors, we assessed
209 mutation frequency of the MPC target sites in 8,893 high-coverage SARS-CoV-2 genomes.
210 Only a single sample with a mutation in the MPC target region was observed,
211 EPI_ISL_414596, translating to an observed mutation rate of 0.01%. This is an order of
212 magnitude lower than the observed mutation rate for the CDC primer regions (0.4-2.58%) and
213 the China CDC primer regions (0.74-16.19%) in the same dataset as reported on the GISAID
214 platform¹¹. These results indicate that the MPC target region is robust to mutation and may
215 provide ongoing value in the case of emergence of a viral strain with mutations in the target
216 regions of high specificity assays.

217 Discussion

218 Nucleic acid testing for the identification of infected individuals is one the most valuable tools
219 for controlling pathogen spread, especially for diseases with asymptomatic carriers. The recent
220 SARS-CoV-2 pandemic has revealed deficiencies in the testing capacity of many countries,
221 resulting in a period where testing was highly restricted, preventing optimal disease
222 containment. The use of family-wide viral assays may reduce the time before mass testing is
223 available by allowing tests to be developed and distributed before pathogen emergence. Here
224 we demonstrate that a Pan-CoV test can be an effective tool for management of novel
225 coronavirus pathogens. These results may also be more broadly applicable for the
226 implementation of pan-family assays for the detection of pathogens from other viral families.
227 **Table 2** summarizes the advantages and disadvantages of a Pan-family assay compared with
228 the current high-specificity testing standard approach.
229

	Advantages	Disadvantages
Specific-Virus Assay	<ul style="list-style-type: none">- High specificity provides confident diagnostic value.- Target optimization allows for detection of very low vial load.- Well validated standard operating procedures for core technology.	<ul style="list-style-type: none">- Lack of availability during early stages of a pandemic.- Rush to develop and distribute in response to a novel pathogen may result in quality control issues.
Pan-Family Assay	<ul style="list-style-type: none">- Stockpiling prior to pandemic development enables rapid and extensive population screening.- Validated and quality controlled prior to pandemic development- Can prioritize individuals for testing with short-supply Specific Virus Assays.	<ul style="list-style-type: none">- Susceptible to off-target positives due to cross-reactivity with common pathogens, reducing diagnostic value or mandating follow up testing.- Sensitivity and specificity of testing dependent on viral family and population of interest.

230 **Table 2: Advantages and disadvantages of a Pan-family assay compared with current**
231 **high-specificity approaches.**

232 Coronaviruses are a useful framework for assessing the utility of pan-family testing as several
233 human coronaviruses are common globally and would interfere with specific identification of
234 a novel coronavirus pathogen. However, even without any further testing a Pan-CoV test still
235 allows for a large majority (>90%) of individuals, particularly asymptomatic adults, to avoid
236 self-isolation measures with a negative test, though greater caution must be taken in
237 populations with a higher HCoV infection rate such as children, symptomatic patients with
238 comorbidities, or populations experiencing a local HCoV epidemic. This limitation can be
239 mitigated through multiple strategies, most simply application of this tool as a first-line screen
240 prior to confirmatory analysis with a more specific test. This would allow short-supply specific
241 tests to be reserved as a confirmatory, rather than a primary tool, enabling a higher-throughput
242 screen of large populations at ports-of-entry or for contact tracing during the early stages of
243 pandemic. An alternative strategy, not reliant on the presence of a specific test, would be the
244 addition of a second exclusionary reaction targeting known common species³⁰, though this may
245 not be an effective tool where a novel pathogen is highly genetically similar to a common
246 species and may be overly burdensome for high-throughput population screening.

247

248 During the initial roll-out of SARS-CoV-2 testing kits by the CDC, several laboratories
249 experienced disruptions due to faulty testing kits³¹. Pan-family assays, developed prior to an
250 outbreak, would have a relaxed timeframe for test development, ensuring best-practice
251 validation, quality control procedures, regulatory certification and laboratory accreditation can
252 be achieved. Pan-family assays may also have additional ongoing utility as a fallback in the
253 case of quality control issues or disease mutations compromising the accuracy of specific assay
254 detection³². By targeting highly conserved regions and accommodating silent mutations, pan-
255 family assays can be expected to be less prone to mutation induced errors, though routine
256 comparison of primer target sites with observed viral strains is prudent. Further consideration

257 must be given to the appropriate number of targets contained in a pan-family test to increase
258 the likelihood that a novel pathogen is captured by an established assay, as well as the
259 appropriate validation processes which should be undertaken following pathogen emergence
260 before the approved use of a pan-family assay.

261
262 Our analysis has highlighted several limitations of reported pan-family tests resulting from an
263 over-optimization on observed sequence variation rather than pre-emptive variation predicted
264 from highly conserved protein motifs. Indeed, with the target regions applied by the MPC assay
265 all possible genomic combinations translating to observed protein motifs are observed in the
266 relatively small panel of reference coronaviruses. Broadening of primer degeneracy with the
267 strategies described in this work, as well as routine comparison with novel animal viruses may
268 assist in ensuring ongoing effectiveness of pan-family assays. However, highly degenerate
269 primers, such as the modified primers described in this work, are likely to have reduced test
270 sensitivity to viral load. This may be partially counteracted through the use of universal base
271 analogues such as inosine or 5-nitroindole³³ to reduced degeneracy or avoided through more
272 judicious targeting of alternative highly conserved genomic motifs⁹. An alternative strategy
273 may be the use of more relaxed reaction conditions to accommodate minor primer mismatches,
274 though this may further reduce assay specificity²⁹. These limitations must be appropriately
275 characterized as part of pan-family assay development if to be applied in a clinical context.

276
277 A panel of pan-family assays would be required to provide a more robust tool for combating
278 novel pathogens, with priority given to viral families associated with previous epidemics. Pan-
279 family assays have been described for multiple viral families associated with recent epidemics,
280 including filoviruses (Ebola Virus)³⁴ and flaviviruses (Zika Virus, Dengue Virus, Yellow Fever
281 Virus)³⁵, and a similar analysis to the one presented here should be performed to assess the

282 specificity and sensitivity of these assays for novel pathogens within the context of common
283 viral species. Consistency in reaction conditions between pan-family assays or multiplexing
284 of several assays into a single kit may further simplify the application of these tools during
285 emerging pandemics.

286

287 A cost-effectiveness analysis of stockpiling pan-family assays is beyond the scope of this work
288 given the novelty of the proposed testing strategies, and the unpredictability of pandemic
289 emergence and characteristics. Most components required to run pan-family assays (nucleic
290 acid-extraction kits, enzymes and buffers) may already be already sufficiently stocked by
291 diagnostic laboratories or may be able to be repurposed for routine testing or research
292 applications towards the end of their shelf life. The only unique components required are the
293 specific test primers, which depending on oligonucleotide modifications, number of reactions
294 and production volume can be expected to cost below 0.5USD/test, with a shelf life of at least
295 2 years. However, to increase the simplicity and rapidity of testing it may be practical to
296 stockpile all reagents required to run a pan-family assay as part of a self-contained test-kit,
297 despite the additional cost.

298

299 Strategic stockpiling of pan-family viral assays is a proactive alternative to current viral disease
300 test strategies which may expedite testing during emerging pandemics. These assays have the
301 potential to greatly assist management of emerging public health emergencies through
302 prioritization of high-resolution testing or isolation measures, despite limitations in test
303 specificity due to cross-reactivity with common pathogens. Extensive further development,
304 validation and certification of pan-family assays is needed prior to application in broad clinical
305 contexts. With appropriate design these tools may allow informative and high-throughput
306 screening of millions of individuals within days of pathogen emergence.

307 Supplementary Table

308 Supplementary Table 1

309 60 Coronavirus-family reference sequences used in this study and the nucleic acid sequence
 310 observed the MPC Primer Target Sites⁷. Genomic sequences which match the primer target
 311 sequences are highlighted in green while those which contain a variant not matching the
 312 primer target sequences are highlighted in orange. A consensus sequence for all observed
 313 variation is shown at the bottom of the table.

Species	MPC Forward Target	MPC Reverse Target
MPC Primer Targets	<u>ACWCARHTVAAYYTNAARTAYGC</u>	<u>TGGGAYTAYCCHAARTGYGA</u>
Alphacoronavirus_1_ NC_002306	ACTCAAATGAATTTGAAATATGC	TGGGACTATCCTAAGTGTGA
Alphacoronavirus_1_ Sus_scrofa NC_028806	ACTCAACTGAATTTGAAATACGC	TGGGACTATCCTAAGTGTGA
Alphacoronavirus_1_ Sus_scrofa NC_038861	ACTCAAATGAATTTGAAATACGC	TGGGACTATCCTAAGTGTGA
Alphacoronavirus_Bat-CoV/P_kuhlil/Italy/3398-19/2015_ Pipistrellus_kuhlil NC_046964	ACGCAACTCAATCTCAAGTATGC	TGGGATTACCTAAGTGTGA
Avian_coronavirus_ NC_001451	ACTCAAATGAATTTAAAATATGC	TGGGATTATCCTAAGTGTGA
Avian_coronavirus_ Meleagris_gallopavo NC_010800	ACTCAAATGAATTTAAAATATGC	TGGGATTATCCTAAGTGTGA
Bat_coronavirus_ Pipistrellus NC_034440	ACTCAAATGAATTTAAAGTATGC	TGGGATTACCTAAGTGTGA
Bat_coronavirus_1A_ NC_010437	ACACAACCTAATCTTAAGTATGC	TGGGACTATCCTAAATGTGA
Bat_coronavirus_BM48-31/BGR/2008_ Rhinolophus_blasii NC_014470	ACTCAGATGAATCTTAAATATGC	TGGGATTACCCAAAATGTGA
Bat_coronavirus_CDPHE15_ Myotis_lucifugus NC_022103	ACTCAGCTCAACTTAAAGTACGC	TGGGACTATCCGAAGTGTGA
Bat_coronavirus_HKU10_ Chiroptera NC_018871	ACACAGCTCAACTTAAAGTATGC	TGGGACTACCTAAGTGTGA
Bat_Hp-betacoronavirus_Zhejiang2013_ Hipposideros_pratti NC_025217	ACTCAAATGAATTTGAAATATGC	TGGGATTATCCTAAGTGTGA
Beluga_whale_coronavirus_SW1_ Delphinapterus_leucas NC_010646	ACCCAGATTAATATGAAGTATGC	TGGGACTATCCTAAGTGTGA
Betacoronavirus_1_ NC_003045	ACTCAAATGAATTTGAAATATGC	TGGGATTATCCTAAGTGTGA
Betacoronavirus_1_ NC_006213	ACTCAAATGAATTTGAAATATGC	TGGGATTATCCTAAGTGTGA
BtRf-AlphaCoV/YN2012_ Rhinolophus_ferrumequinum NC_028824	ACACAGCTTAATCTTAAGTATTC	TGGGATTATCCTAAATGTGA
Bulbul_coronavirus_HKU11_ Pycnonotus_jocosus NC_011547	ACGAGATGAATCTTAAAGTATGC	TGGGATTACCCCAAGTGTGA
Canada_goose_coronavirus_ Branta_canadensis NC_046965	ACTCAGATGAATTTGAAATATGC	TGGGACTATCCTAAATGTGA
China_Rattus_coronavirus_HKU24_ Rattus_norvegicus NC_026011	ACCCAAATGAATCTTAAATATGC	TGGGATTATCCTAAGTGCGA
Common_moorhen_coronavirus_HKU21_ Gallinula_chloropus NC_016996	ACTCAAATGAACCTGAAATATGC	TGGGATTATCCTAAGTGTGA
Coronavirus_AcCoV-JC34_ Apodemus_chevrieri NC_034972	ACACAGCTTAATCTTAAAGTATGC	TGGGATTATCCTAAATGTGA
Coronavirus_HKU15_ Sus_scrofa NC_039208	ACTCAGATGAACCTTAAAGTATGC	TGGGATTACCTAAGTGTGA
Ferret_coronavirus_ Mustela_putorius NC_030292	ACACAGATGAATCTTAAAGTATGC	TGGGATTACCCCAAGTGTGA
Hedgehog_coronavirus_1_ Erinaceus_europaeus NC_039207	ACTCAAATGAATTTAAAGTATGC	TGGGATTACCTAAGTGTGA
Human_coronavirus_229E_ NC_002645	ACTCAGTTAAATCTTAAATACGC	TGGGACTATCCTAAGTGTGA
Human_coronavirus_229E_ Camelus NC_028752	ACTCAGTTAAATCTCAATACGC	TGGGACTATCCTAAGTGTGA

Human_coronavirus_HKU1_ Homo_sapiens NC_006577	ACTCAAATGAATTTAAAATATGC	TGGGATTATCCTAAATGTGA
Human_coronavirus_NL63_ NC_005831	ACACAGCTGAATCTTAAGTATGC	TGGGATTATCCCAAATGTGA
Lucheng_Rn_rat_coronavirus_ Rattus_norvegicus NC_032730	ACGCAGCTTAATCTTAAGTATGC	TGGGACTATCCCAAGTGTGA
Magpie-robin_coronavirus_HKU18_ Muscicapidae NC_016993	ACTCAGATGAACCTCAAATATGC	TGGGATTACCTAAGTGTGA
Middle_East_respiratory_syndrome-related_coronavirus_ Homo_sapiens NC_019843G	ACTCAAATGAATCTAAAATATGC	TGGGATTACCTAAGTGTGA
Middle_East_respiratory_syndrome-related_coronavirus_ Homo_sapiens NC_038294	ACTCAAATGAATCTAAAATATGC	TGGGATTACCTAAGTGTGA
Miniopterus_bat_coronavirus_HKU8_ NC_010438	ACACAGCTTAACCTTAAGTATGC	TGGGATTACCTAAGTGTGA
Mink_coronavirus_1_ Neovison_vison NC_023760	ACACAAATGAATCTAAAGTACGC	TGGGATTATCCGAAATGTGA
Munia_coronavirus_HKU13_ Lonchura_striata NC_011550	ACTCAGATGAATCTAAAATATGC	TGGGATTACCCCAAGTGTGA
Murine_coronavirus_ AC_000192	ACTCAAATGAATCTTAAATATGC	TGGGACTATCCTAAATGTGA
Murine_coronavirus_ NC_001846	ACTCAAATGAATCTTAAATATGC	TGGGACTATCCTAAATGTGA
Murine_coronavirus_ Rattus NC_012936	ACTCAAATGAATCTTAAATATGC	TGGGACTATCCTAAGTGTGA
Myotis_ricketti_alphacoronavirus_Sax-2011_ Myotis_ricketti NC_028811	ACACAGCTTAATCTTAAGTATGC	TGGGACTATCCTAAGTGTGA
Night_heron_coronavirus_HKU19_ Ardeidae NC_016994	ACGCAAATGAATCTCAAATATGC	TGGGATTACCTAAGTGTGA
NL63-related_bat_coronavirus_strain_BtKYNL63-9b_ Triaenops_afer NC_032107	ACTCAATGAATCTTAAGTATGC	TGGGACTATCCAAAATGTGA
Nyctalus_velutinus_alphacoronavirus_SC-2013_ Nyctalus_velutinus NC_028833	ACGCAGCTTAATCTCAAGTATGC	TGGGACTACCTAAGTGTGA
Pipistrellus_bat_coronavirus_HKU5_ Chiroptera NC_009020	ACGCAGATGAATTTGAAATATGC	TGGGATTACCCCAAGTGTGA
Porcine_epidemic_diarrhea_virus_ NC_003436	ACACAGCTCAACCTTAAATACGC	TGGGATTACCCAAAGTGCGA
Rabbit_coronavirus_HKU14_ Oryctolagus_cuniculus NC_017083	ACACAAATGAACCTTAAGTATGC	TGGGATTATCCAAAATGTGA
Rhinolophus_bat_coronavirus_HKU2_ NC_009988	ACACAGCTTAATCTCAAGTATTC	TGGGATTATCCTAAATGTGA
Rhinolophus_ferrumequinum_alphacoronavirus_HuB-2013_ Rhinolophus_ferrumequinum NC_028814	ACACAGCTTAATCTTAAATATGC	TGGGACTACCCGAAGTGTGA
Rodent_coronavirus_ Myodes_rufocanus NC_046954	ACACAGATGAATCTTAAGTATGC	TGGGATTATCCTAAATGTGA
Rousettus_bat_coronavirus_GCCDC1_ Rousettus_leschenaultii NC_030886	ACTCAGATGAATTTGAAGTATGC	TGGGATTACCTAAGTGCGA
Rousettus_bat_coronavirus_HKU9_ Chiroptera NC_009021	ACTCAGATGAATTTGAAGTATGC	TGGGACTATCCTAAATGTGA
Scotophilus_bat_coronavirus_512_ NC_009657	ACCCAGCTTAATTTGAAGTATGC	TGGGATTATCCTAAGTGTGA
Severe_acute_respiratory_syndrome-related_coronavirus_ NC_004718	ACTCAAATGAATCTTAAGTATGC	TGGGATTATCCAAAATGTGA
Severe_acute_respiratory_syndrome-related_coronavirus_ Homo_sapiens NC_045512	ACTCAAATGAATCTTAAGTATGC	TGGGATTATCCTAAATGTGA
Shrew_coronavirus_ Sorex_araneus NC_046955	ACGCAAGTTAATTTAAAATATGC	TGGGATTACCTAAATGTGA
Sparrow_coronavirus_HKU17_ Passeridae NC_016992	ACTCAGATGAACCTTAAGTATGC	TGGGATTACCCCAAGTGTGA
Thrush_coronavirus_HKU12_ Turdus_hortulorum NC_011549	ACTCAAATGAATCTTAAATATGC	TGGGATTACCTAAGTGTGA
Tyonycteris_bat_coronavirus_HKU4_ Chiroptera NC_009019	ACTCAAATGAATTTGAAGTATGC	TGGGATTACCTAAGTGTGA
Wencheng_Sm_shrew_coronavirus_ Suncus_murinus NC_035191	ACGCAAATGAATCTTAAGTATGC	TGGGATTATCCCAAATGTGA
White-eye_coronavirus_HKU16_ Zosteropidae NC_016991	ACTCAGATGAATCTTAAGTATGC	TGGGATTACCTAAGTGTGA
Wigeon_coronavirus_HKU20_ Mareca NC_016995	ACACAGATGAATCTAAAGTATGC	TGGGATTATCCTAAATGTGA
Consensus DNA	ACNCARNTNAAVHTNAARTAYKC	TGGGAYTAYCCNAARTGYGA

315 **Supplementary Table 2**

316 20 Coronavirus species with novel variation in the MPC Target sites and the effect of this variation on the protein motif encoded by this site.

317 Silent mutations are highlighted in blue while missense mutations are highlighted in orange.

Species	MPC Forward Target	Mutation Type	MPC Reverse Target	Mutation Type
MPC Primer Targets	ACWCARHTVAAYYTNAARTAYGC		TGGGAYTAYCCHAARTGYGA	
Alphacoronavirus_Bat-CoV/P_kuhlil/Italy/3398-19/2015_Pipistrellus_kuhlil NC_046964	ACGCAACTCAATCTCAAGTATGC	Silent		
Bat_coronavirus_1A_ NC_010437	ACACAACCTTAATCTTAAGTATGC	Silent		
Bat_coronavirus_CDPHE15_ Myotis_lucifugus NC_022103	ACTCAGCTCAACTTAAAGTACGC	Silent	TGGGACTATCCGAAGTGTGA	Silent
Beluga_whale_coronavirus_SW1_ Delphinapterus_leucas NC_010646	ACCCAGATTAATGAAGTATGC	Missense		
BtRf-AlphaCoV/YN2012_ Rhinolophus_ferrumequinum NC_028824	ACACAGCTTAATCTTAAGTATTC	Missense		
Bulbul_coronavirus_HKU11_ Pycnonotus_jocosus NC_011547	ACGCAGATGAATCTTAAGTATGC	Silent		
China_Rattus_coronavirus_HKU24_ Rattus_norvegicus NC_026011	ACCCAAATGAATCTTAAATATGC	Silent		
Coronavirus_AcCoV-JC34_ Apodemus_chevrieri NC_034972	ACACAGCTTAATCTTAAGTATGC	Silent		
Lucheng_Rn_rat_coronavirus_ Rattus_norvegicus NC_032730	ACGCAGCTTAATCTTAAGTATGC	Silent		
Miniopterus_bat_coronavirus_HKU8_ NC_010438	ACACAGCTTAACCTTAAGTATGC	Silent		
Mink_coronavirus_1_ Neovison_vison NC_023760			TGGGATTATCCGAAATGTGA	Silent
Myotis_ricketti_alphacoronavirus_Sax-2011_ Myotis_ricketti NC_028811	ACACAGCTTAATCTTAAGTATGC	Silent		
Night_heron_coronavirus_HKU19_ Ardeidae NC_016994	ACGCAAATGAATCTCAAATATGC	Silent		
Nyctalus_velutinus_alphacoronavirus_SC-2013_ Nyctalus_velutinus NC_028833	ACGCAGCTTAATCTCAAGTATGC	Silent		
Pipistrellus_bat_coronavirus_HKU5_ Chiroptera NC_009020	ACGCAGATGAATTTGAAATATGC	Silent		
Rhinolophus_bat_coronavirus_HKU2_ NC_009988	ACACAGCTTAATCTCAAGTATTC	Missense		
Rhinolophus_ferrumequinum_alphacoronavirus_HuB-2013_ Rhinolophus_ferrumequinum NC_028814	ACACAGCTTAATCTTAAATATGC	Silent	TGGGACTACCCGAAGTGTGA	Silent
Scotophilus_bat_coronavirus_512_ NC_009657	ACCCAGCTTAATTTGAAGTATGC	Silent		
Shrew_coronavirus_ Sorex_araneus NC_046955	ACGCAAGTTAATTTAAATATGC	Missense		
Wencheng_Sm_shrew_coronavirus_ Suncus_murinus NC_035191	ACGCAAATGAATCTTAAGTATGC	Silent		

319 **Supplementary Table 3**

320 60 Coronavirus-family reference sequences used in this study and the protein sequence
 321 encoded by the MPC Assay Primer Target Sites⁷. A protein and nucleic acid consensus
 322 sequence for all observed variation is shown at the bottom of the table.

Species	MPC Forward Target	MPC Reverse Target
Alphacoronavirus_1_ NC_002306	TQMNLKYA	WDYPKCD
Alphacoronavirus_1_ Sus_scrofa NC_028806	TQLNLKYA	WDYPKCD
Alphacoronavirus_1_ Sus_scrofa NC_038861	TQMNLKYA	WDYPKCD
Alphacoronavirus_Bat-CoV/P_kuhlii/Italy/3398-19/2015_ Pipistrellus_kuhlii NC_046964	TQLNLKYA	WDYPKCD
Avian_coronavirus_ NC_001451	TQMNLKYA	WDYPKCD
Avian_coronavirus_ Meleagris_gallopavo NC_010800	TQMNLKYA	WDYPKCD
Bat_coronavirus_ Pipistrellus NC_034440	TQMNLKYA	WDYPKCD
Bat_coronavirus_1A_ NC_010437	TQMNLKYA	WDYPKCD
Bat_coronavirus_BM48-31/BGR/2008_ Rhinolophus_blasii NC_014470	TQLNLKYA	WDYPKCD
Bat_coronavirus_CDPHE15_ Myotis_lucifugus NC_022103	TQMNLKYA	WDYPKCD
Bat_coronavirus_HKU10_ Chiroptera NC_018871	TQLNLKYA	WDYPKCD
Bat_Hp-betacoronavirus_Zhejiang2013_ Hipposideros_pratti NC_025217	TQLNLKYA	WDYPKCD
Beluga_whale_coronavirus_SW1_ Delphinapterus_leucas NC_010646	TQINMKYA	WDYPKCD
Betacoronavirus_1_ NC_003045	TQMNLKYA	WDYPKCD
Betacoronavirus_1_ NC_006213	TQMNLKYA	WDYPKCD
BTrf-AlphaCoV/YN2012_ Rhinolophus_ferrumequinum NC_028824	TQLNLKYS	WDYPKCD
Bulbul_coronavirus_HKU11_ Pycnonotus_jocosus NC_011547	TQMNLKYA	WDYPKCD
Canada_goose_coronavirus_ Branta_canadensis NC_046965	TQMNLKYA	WDYPKCD
China_Rattus_coronavirus_HKU24_ Rattus_norvegicus NC_026011	TQMNLKYA	WDYPKCD
Common_moorhen_coronavirus_HKU21_ Gallinula_chloropus NC_016996	TQMNLKYA	WDYPKCD
Coronavirus_AcCoV-JC34_ Apodemus_chevrieri NC_034972	TQLNLKYA	WDYPKCD
Coronavirus_HKU15_ Sus_scrofa NC_039208	TQMNLKYA	WDYPKCD
Ferret_coronavirus_ Mustela_putorius NC_030292	TQMNLKYA	WDYPKCD
Hedgehog_coronavirus_1_ Erinaceus_europaeus NC_039207	TQMNLKYA	WDYPKCD
Human_coronavirus_229E_ NC_002645	TQLNLKYA	WDYPKCD
Human_coronavirus_229E_ Camelus NC_028752	TQLNLKYA	WDYPKCD
Human_coronavirus_HKU1_ Homo_sapiens NC_006577	TQMNLKYA	WDYPKCD
Human_coronavirus_NL63_ NC_005831	TQLNLKYA	WDYPKCD
Lucheng_Rn_rat_coronavirus_ Rattus_norvegicus NC_032730	TQLNLKYA	WDYPKCD
Magpie-robin_coronavirus_HKU18_ Muscicapidae NC_016993	TQMNLKYA	WDYPKCD

Middle_East_respiratory_syndrome-related_coronavirus_ Homo_sapiens NC_019843G	TQMNLKYA	WDYPKCD
Middle_East_respiratory_syndrome-related_coronavirus_ Homo_sapiens NC_038294	TQMNLKYA	WDYPKCD
Miniopterus_bat_coronavirus_HKU8_ NC_010438	TQLNLKYA	WDYPKCD
Mink_coronavirus_1_ Neovison_vison NC_023760	TQMNLKYA	WDYPKCD
Munia_coronavirus_HKU13_ Lonchura_striata NC_011550	TQMNLKYA	WDYPKCD
Murine_coronavirus_ AC_000192	TQMNLKYA	WDYPKCD
Murine_coronavirus_ NC_001846	TQMNLKYA	WDYPKCD
Murine_coronavirus_ Rattus NC_012936	TQMNLKYA	WDYPKCD
Myotis_ricketti_alphacoronavirus_Sax-2011_ Myotis_ricketti NC_028811	TQLNLKYA	WDYPKCD
Night_heron_coronavirus_HKU19_ Ardeidae NC_016994	TQLNLKYA	WDYPKCD
NL63-related_bat_coronavirus_strain_BtKYNL63-9b_ Triaenops_afer NC_032107	TQMNLKYA	WDYPKCD
Nyctalus_velutinus_alphacoronavirus_SC-2013_ Nyctalus_velutinus NC_028833	TQLNLKYA	WDYPKCD
Pipistrellus_bat_coronavirus_HKU5_ Chiroptera NC_009020	TQMNLKYA	WDYPKCD
Porcine_epidemic_diarrhea_virus_ NC_003436	TQLNLKYA	WDYPKCD
Rabbit_coronavirus_HKU14_ Oryctolagus_cuniculus NC_017083	TQMNLKYA	WDYPKCD
Rhinolophus_bat_coronavirus_HKU2_ NC_009988	TQLNLKYS	WDYPKCD
Rhinolophus_ferrumequinum_alphacoronavirus_HuB-2013_ Rhinolophus_ferrumequinum NC_028814	TQLNLKYA	WDYPKCD
Rodent_coronavirus_ Myodes_rufocanus NC_046954	TQMNLKYA	WDYPKCD
Rousettus_bat_coronavirus_GCCDC1_ Rousettus_leschenaultii NC_030886	TQMNLKYA	WDYPKCD
Rousettus_bat_coronavirus_HKU9_ Chiroptera NC_009021	TQMNLKYA	WDYPKCD
Scotophilus_bat_coronavirus_512_ NC_009657	TQLNLKYA	WDYPKCD
Severe_acute_respiratory_syndrome-related_coronavirus_ NC_004718	TQMNLKYA	WDYPKCD
Severe_acute_respiratory_syndrome-related_coronavirus_ Homo_sapiens NC_045512	TQMNLKYA	WDYPKCD
Shrew_coronavirus_ Sorex_araneus NC_046955	TQVNLKYA	WDYPKCD
Sparrow_coronavirus_HKU17_ Passeridae NC_016992	TQMNLKYA	WDYPKCD
Thrush_coronavirus_HKU12_ Turdus_hortulorum NC_011549	TQMNLKYA	WDYPKCD
Tylosycteris_bat_coronavirus_HKU4_ Chiroptera NC_009019	TQMNLKYA	WDYPKCD
Wencheng_Sm_shrew_coronavirus_ Suncus_murinus NC_035191	TQMNLKYA	WDYPKCD
White-eye_coronavirus_HKU16_ Zosteropidae NC_016991	TQMNLKYA	WDYPKCD
Wigeon_coronavirus_HKU20_ Mareca NC_016995	TQMNLKYA	WDYPKCD
Consensus Protein	TQ(I/M/L/V)N(L/M)KY(A/S)	WDYPKCD
Consensus Reverse Translation	ACNCARNTNAAYHTNAARTAYKC	TGGGAYTAYCCNAARTGYGA
Consensus DNA	ACNCARNTNAAYHTNAARTAYKC	TGGGAYTAYCCNAARTGYGA

323

324

325 **Supplementary Table 4: Revised Pan-Coronavirus primers accommodating observed**
326 **nucleic acid and protein sequences.** Modified Targets (Observed Variation) describe the
327 degenerate primer sequences required to accommodate all observed genomic variation
328 **(supplementary table 1).** Modified Targets (Reverse Translated) describe a degenerate primer
329 target sequence designed using the reverse translation of the observed protein sequences
330 encoding the primer target sites **(supplementary table 3).**

331

	Forward Primer	Reverse Primer
MPC Primer Targets	ACWCARHTVAAYYTNAARTAYGC	TGGGAYTAYCCHAARTGYGA
Modified Targets (Observed Variation)	AC <u>N</u> CAR <u>N</u> T <u>N</u> AA <u>Y</u> <u>H</u> TNAARTAY <u>K</u> C	TGGGAYTAYCC <u>N</u> AARTGYGA
Modified Targets (Reverse Translated)	AC <u>N</u> CAR <u>N</u> T <u>N</u> AA <u>Y</u> <u>H</u> TNAARTAY <u>K</u> C	TGGGAYTAYCC <u>N</u> AARTGYGA

332

333

References

- 335 1 Zou, L. *et al.* SARS-CoV-2 Viral Load in Upper Respiratory Specimens of Infected Patients.
336 *New England Journal of Medicine* **382**, 1177-1179, doi:10.1056/NEJMc2001737 (2020).
- 337 2 Hadaya, J., Schumm, M. & Livingston, E. H. Testing Individuals for Coronavirus Disease
338 2019 (COVID-19). *JAMA*, doi:10.1001/jama.2020.5388 (2020).
- 339 3 Zaki, A. M., Van Boheemen, S., Bestebroer, T. M., Osterhaus, A. D. & Fouchier, R. A.
340 Isolation of a novel coronavirus from a man with pneumonia in Saudi Arabia. *New England*
341 *Journal of Medicine* **367**, 1814-1820 (2012).
- 342 4 Cabeça, T. K., Passos, A. M., Granato, C. & Bellei, N. Human coronavirus occurrence in
343 different populations of Sao Paulo: a comprehensive nine-year study using a pancoronavirus
344 RT-PCR assay. *Brazilian Journal of Microbiology* **44**, 335-339 (2013).
- 345 5 Hatcher, E. L. *et al.* Virus Variation Resource - improved response to emergent viral
346 outbreaks. *Nucleic Acids Res* **45**, D482-D490, doi:10.1093/nar/gkw1065 (2017).
- 347 6 Stephensen, C. B., Casebolt, D. B. & Gangopadhyay, N. N. Phylogenetic analysis of a highly
348 conserved region of the polymerase gene from 11 coronaviruses and development of a
349 consensus polymerase chain reaction assay. *Virus Res* **60**, 181-189, doi:10.1016/s0168-
350 1702(99)00017-9 (1999).
- 351 7 Vijgen, L., Moës, E., Keyaerts, E., Li, S. & Van Ranst, M. in *SARS-and Other Coronaviruses*
352 3-12 (Springer, 2008).
- 353 8 de Souza Luna, L. K. *et al.* Generic Detection of Coronaviruses and Differentiation at the
354 Prototype Strain Level by Reverse Transcription-PCR and Nonfluorescent Low-Density
355 Microarray. *J Clin Microbiol* **45**, 1049-1052, doi:10.1128/jcm.02426-06 (2007).
- 356 9 Hu, H., Jung, K., Wang, Q., Saif, L. J. & Vlasova, A. N. Development of a one-step RT-PCR
357 assay for detection of pancoronaviruses (α -, β -, γ -, and δ -coronaviruses) using newly designed
358 degenerate primers for porcine and avianfecal samples. *Journal of virological methods* **256**,
359 116-122 (2018).
- 360 10 Madeira, F. *et al.* The EMBL-EBI search and sequence analysis tools APIs in 2019. *Nucleic*
361 *Acids Res* **47**, W636-W641, doi:10.1093/nar/gkz268 (2019).
- 362 11 Elbe, S. & Buckland-Merrett, G. Data, disease and diplomacy: GISAID's innovative
363 contribution to global health. *Global Challenges* **1**, 33-46, doi:10.1002/gch2.1018 (2017).
- 364 12 Pagès, H., Aboyoun, P., Gentleman, R. & DebRoy, S. Biostrings: Efficient manipulation of
365 biological strings. *R package version 2* (2017).
- 366 13 Kissler, S. M., Tedijanto, C., Goldstein, E., Grad, Y. H. & Lipsitch, M. Projecting the
367 transmission dynamics of SARS-CoV-2 through the postpandemic period. *Science* (2020).
- 368 14 Zhou, W., Wang, W., Wang, H., Lu, R. & Tan, W. First infection by all four non-severe acute
369 respiratory syndrome human coronaviruses takes place during childhood. *BMC Infectious*
370 *Diseases* **13**, 433, doi:10.1186/1471-2334-13-433 (2013).
- 371 15 Gorse, G. J., Donovan, M. M. & Patel, G. B. Antibodies to coronaviruses are higher in older
372 compared with younger adults and binding antibodies are more sensitive than neutralizing
373 antibodies in identifying coronavirus-associated illnesses. *Journal of Medical Virology*.
- 374 16 Aldridge, R. *et al.* Seasonality and immunity to laboratory-confirmed seasonal coronaviruses
375 (HCoV-NL63, HCoV-OC43, and HCoV-229E): results from the Flu Watch cohort study
376 [version 1; peer review: awaiting peer review]. *Wellcome Open Research* **5**,
377 doi:10.12688/wellcomeopenres.15812.1 (2020).
- 378 17 van der Zalm, M. M. *et al.* Respiratory pathogens in children with and without respiratory
379 symptoms. *J Pediatr* **154**, 396-400.e391, doi:10.1016/j.jpeds.2008.08.036 (2009).
- 380 18 Gaunt, E. R., Hardie, A., Claas, E. C. J., Simmonds, P. & Templeton, K. E. Epidemiology and
381 clinical presentations of the four human coronaviruses 229E, HKU1, NL63, and OC43
382 detected over 3 years using a novel multiplex real-time PCR method. *J Clin Microbiol* **48**,
383 2940-2947, doi:10.1128/JCM.00636-10 (2010).

- 384 19 Prill, M. M. *et al.* Human coronavirus in young children hospitalized for acute respiratory
385 illness and asymptomatic controls. *Pediatr Infect Dis J* **31**, 235-240,
386 doi:10.1097/INF.0b013e31823e07fe (2012).
- 387 20 Cabeça, T. K., Granato, C. & Bellei, N. Epidemiological and clinical features of human
388 coronavirus infections among different subsets of patients. *Influenza Other Respir Viruses* **7**,
389 1040-1047, doi:10.1111/irv.12101 (2013).
- 390 21 Lepiller, Q. *et al.* High incidence but low burden of coronaviruses and preferential
391 associations between respiratory viruses. *J Clin Microbiol* **51**, 3039-3046,
392 doi:10.1128/JCM.01078-13 (2013).
- 393 22 Matoba, Y. *et al.* Detection of the Human Coronavirus 229E, HKU1, NL63, and OC43
394 between 2010 and 2013 in Yamagata, Japan. *Japanese Journal of Infectious Diseases* **68**,
395 138-141, doi:10.7883/yoken.JJID.2014.266 (2015).
- 396 23 Zhang, Y. *et al.* Burden of respiratory syncytial virus infections in China: Systematic review
397 and meta-analysis. *J Glob Health* **5**, 020417-020417, doi:10.7189/jogh.05.020417 (2015).
- 398 24 Yip, C. C. *et al.* A six-year descriptive epidemiological study of human coronavirus infections
399 in hospitalized patients in Hong Kong. *Virologica Sinica* **31**, 41-48 (2016).
- 400 25 Liu, P. *et al.* Prevalence and genetic diversity analysis of human coronaviruses among cross-
401 border children. *Virol J* **14**, 230-230, doi:10.1186/s12985-017-0896-0 (2017).
- 402 26 Zeng, Z.-Q. *et al.* Epidemiology and clinical characteristics of human coronaviruses OC43,
403 229E, NL63, and HKU1: a study of hospitalized children with acute respiratory tract infection
404 in Guangzhou, China. *European Journal of Clinical Microbiology & Infectious Diseases* **37**,
405 363-369, doi:10.1007/s10096-017-3144-z (2018).
- 406 27 Killerby, M. E. *et al.* Human coronavirus circulation in the United States 2014–2017. *Journal*
407 *of Clinical Virology* **101**, 52-56, doi:<https://doi.org/10.1016/j.jcv.2018.01.019> (2018).
- 408 28 Heimdal, I. *et al.* Human Coronavirus in Hospitalized Children With Respiratory Tract
409 Infections: A 9-Year Population-Based Study From Norway. *J Infect Dis* **219**, 1198-1206,
410 doi:10.1093/infdis/jiy646 (2019).
- 411 29 Stadhouders, R. *et al.* The effect of primer-template mismatches on the detection and
412 quantification of nucleic acids using the 5' nuclease assay. *The Journal of Molecular*
413 *Diagnostics* **12**, 109-117 (2010).
- 414 30 Wan, Z. *et al.* A Melting Curve-Based Multiplex RT-qPCR Assay for Simultaneous Detection
415 of Four Human Coronaviruses. *International journal of molecular sciences* **17**, 1880,
416 doi:10.3390/ijms17111880 (2016).
- 417 31 Maxmen, A. Thousands of coronavirus tests are going unused in US labs. *Nature* (2020).
- 418 32 Lippi, G., Simundic, A.-M. & Plebani, M. Potential preanalytical and analytical
419 vulnerabilities in the laboratory diagnosis of coronavirus disease 2019 (COVID-19). *Clinical*
420 *Chemistry and Laboratory Medicine (CCLM)* **1** (2020).
- 421 33 Loakes, D. & Brown, D. M. 5-Nitroindole as an universal base analogue. *Nucleic acids*
422 *research* **22**, 4039-4043, doi:10.1093/nar/22.20.4039 (1994).
- 423 34 Kopp, K. *et al.* Pan-filovirus one-step reverse transcription-polymerase chain reaction
424 screening assay. *bioRxiv*, 579458, doi:10.1101/579458 (2019).
- 425 35 Vina-Rodriguez, A. *et al.* A Novel Pan-Flavivirus Detection and Identification Assay Based
426 on RT-qPCR and Microarray. *Biomed Res Int* **2017**, 4248756-4248756,
427 doi:10.1155/2017/4248756 (2017).