

1 **SARS-CoV-2 serology in 4000 health care and administrative staff across seven sites in**  
2 **Lombardy, Italy**

3  
4 Maria Teresa Sandri<sup>1¶</sup>, Elena Azzolini<sup>1¶</sup>, Valter Torri<sup>2</sup>, Sara Carloni<sup>3</sup>, Chiara Pozzi<sup>1</sup>, Michela  
5 Salvatici<sup>1</sup>, Michele Tedeschi<sup>1</sup>, Massimo Castoldi<sup>5</sup>, Alberto Mantovani<sup>1,3,4</sup> and Maria Rescigno<sup>1,3\*</sup>

6  
7 <sup>1</sup>Humanitas Clinical and Research Center – IRCCS, Rozzano – Milan, Italy

8 <sup>2</sup>Istituto di Ricerche Farmacologiche “Mario Negri” - IRCCS, Milano, Italy

9 <sup>3</sup>Humanitas University Department of Biomedical Sciences, Pieve Emanuele – Milan, Italy

10 <sup>4</sup>The William Harvey Research Institute, Queen Mary University of London, London, UK

11 <sup>5</sup>Humanitas Gavazzeni and Castelli, Bergamo, Italy

12  
13 <sup>¶</sup>These authors contributed equally

14

15

16 \* Corresponding author

17 E-mail: [maria.rescigno@hunimed.eu](mailto:maria.rescigno@hunimed.eu)

18

19 **Abstract**

20 Lombardy is the Italian region most affected by COVID-19. We tested the presence of plasma anti-  
21 SARS-CoV-2 IgG antibodies in 3985 employees across 7 healthcare facilities in areas of Lombardy  
22 with different exposure to the SARS-CoV-2 epidemic. Subjects filled a questionnaire to self-report  
23 on COVID-19 symptoms, co-morbidities, smoking, regular or smart-working, and the exposure to  
24 COVID-infected individuals. We show that the number of individuals exposed to the virus depended  
25 on the geographical location of the facility, ranging between 3 and 43%, consistent with the spatial  
26 variation of COVID-19 incidence in Lombardy, and correlated with family contacts. We observed a  
27 higher prevalence of females than males positive for IgG, however the level of antibodies was similar,  
28 suggesting a comparable magnitude of the response. IgG positivity among smokers was lower (7.4%  
29 vs 13.5%) although without difference in IgG plasma levels. We observed 11.9% of IgG positive  
30 asymptomatic individuals and another 23.1% with one or two symptoms. Interestingly, among the  
31 IgG positive population, 81.2% of subjects with anosmia/dysgeusia and fever were SARS-CoV-2  
32 infected, indicating that these symptoms are strongly associated to COVID-19. The plasma level of  
33 IgG inversely correlated with anti-pneumococcal vaccination.

34 In conclusion, the frequency of IgG positivity and SARS-CoV-2 infection is dependent on the  
35 geographical exposure to the virus and primarily to family rather than hospital exposure.

36

## 37 **Introduction**

38 Lombardy has been the Italian region most affected by SARS-Cov-2 infection with more than 80,000  
39 cases from the outbreak and a mortality rate of nearly 18% (as of May 8th,  
40 <https://utils.cedsdigital.it/coronavirus/#regioni1>). Only symptomatic individuals have been tested by  
41 RT-PCR to detect SARS-CoV-2, and hence the spreading of the virus, particularly in the  
42 asymptomatic population, is unknown. Detection of viral RNA is not very sensitive in cases of low  
43 viral load, when patients with negative RT PCR test convert to positive in few days, or when COVID-  
44 19 is highly suspected by the result of chest CT <sup>1-6</sup>. It is just a snapshot of the exact moment of the  
45 infection. Hence, unless being continuously monitored by viral testing, the asymptomatic individuals'  
46 infected state may be missed.

47 A retrospective way to assess viral spread is via the analysis of an immune response that can be  
48 detected through the development of immunoglobulins <sup>7</sup>. Indeed, almost the totality (>95%) of  
49 laboratory-confirmed COVID-19 showed seroconversion even using different methodologies and  
50 antibody isotypes (ELISA, EIA, anti-IgM, anti-IgG or anti-IgA) <sup>7-11</sup>. Interestingly, the dynamic of the  
51 immune response to SARS-CoV-2 is very peculiar and patient dependent. IgM for instance, which  
52 should be the first type of immunoglobulins to appear under normal circumstances, are detected  
53 before, concomitant or even after IgGs, or do not appear at all <sup>7,12</sup>. This suggests that differently from  
54 other infectious diseases, in SARS-CoV-2 infection, IgG is a more reliable marker for seroconversion  
55 than IgM.

56 There is evidence that IgG analysis allowed to detect viral RNA negative asymptomatic relatives of  
57 COVID-19 patients <sup>7</sup>, suggesting that anti-SARS-CoV-2 IgG may be used as a diagnostic tool to  
58 detect the incidence of asymptomatic infections even in cases of impossibility of viral detection.  
59 Based on these assumptions, we tested the presence of plasma anti-SARS-CoV-2 IgG antibodies in  
60 nearly 4000 (3985) employees of 7 different healthcare facilities, one including a research center and

61 a University, located across the Lombardy region in areas with different exposure to the epidemic  
62 (Milan, Rozzano, Varese, Castellanza and Bergamo (the city most affected by the pandemic per  
63 number of individuals)). All of the analyzed hospitals drastically reduced their routine practice and,  
64 except for Humanitas Medical Care, which is a point of care, they were all dedicated to COVID-19  
65 during the time of observation.

66

## 67 **Results**

### 68 **Study population**

69 Recruitment was on a voluntary basis: it started on April 28<sup>th</sup> and more than 65% of employees  
70 participated as of May 16<sup>th</sup>, 2020 (clinicaltrials.gov NCT04387929). An international medical school  
71 (Humanitas University, Pieve Emanuele (MI)) and 6 different hospitals participated to the study:  
72 Istituto Clinico Humanitas (ICH), Rozzano (MI); Humanitas Gavazzeni, Bergamo; Humanitas  
73 Castelli, Bergamo; Humanitas Mater Domini (HMD), Castellanza (VA); Humanitas Medical Care  
74 (HMC), Varese (VA); Humanitas San Pio X, Milano (MI). The individuals were healthcare  
75 professionals (physicians (16.5%), surgeons (7.2%) anesthesiologists (2.8%), physiotherapists  
76 (1.8%), nurses (25.4%)), technicians (4.4%), students (0.7%), researchers/academics (3.1%), other  
77 roles, including administrative staff (7.9%), biologists (1.3%) etc.. 66.8% were females and 33.2%  
78 males, median age 42 yo (21-86 yo) (Supplementary Table S1). The distribution of the healthcare  
79 workers participating to the study among the different hospitals was very similar except for HMC, a  
80 point of care, where the proportion of workers differs from that of the other hospitals, and for ICH  
81 which is the only site where researchers work (Supplementary Fig. S1). Besides this, we did not  
82 observe major differences in the voluntary participation of the different professionals across sites.  
83 Subjects filled a questionnaire reporting whether they had COVID-associated symptoms, including  
84 fever, dry cough, asthenia, soreness and muscle pain, runny nose, sore throat, gastrointestinal

85 symptoms (including vomiting, nausea, diarrhea), conjunctivitis, pneumonia, severe acute respiratory  
86 syndrome, anosmia/dysgeusia from February 1<sup>st</sup> to the time of questionnaire filling. They also  
87 reported on body mass index (BMI), co-morbidities (hypertension, heart disease or diabetes,  
88 immunosuppression), smoking, vaccinations, regular or smart-working, the frequency of home exits  
89 for non-work related reasons and the exposure to COVID-infected individuals. With the exception of  
90 HMC, which being a point of care closed down at lockdown (officially started on March 9<sup>th</sup>), during  
91 the pandemic and in the period of observation, most of routine practice was interrupted, and the  
92 majority of physician and non-physician healthcare professionals worked in COVID-dedicated areas  
93 independent on the location of the hospital (for instance at ICH, 8 out of 20 wards were transformed  
94 into COVID treatment wards (330 beds), and 2 into semi-intensive care units, while the intensive care  
95 units (ICU) capacity doubled (60 beds)). All of the personnel working in the emergency room or  
96 customer care had to wear obligatory PPE from February 1<sup>st</sup> at Castelli and Gavazzeni, from February  
97 23<sup>rd</sup> at ICH, and from March 3<sup>rd</sup> everywhere in the hospital. Administrative staff workers stopped  
98 working in the hospital at the beginning of lockdown and worked from home. Customer service and  
99 research personnel worked one or two days a week at the sites and the rest of the time from home.

## 100 101 **Frequency of IgG positivity and correlation with geographical area**

102 Anti-S1 and anti-S2 SARS-CoV-2 IgG specific antibodies were detected via an indirect  
103 chemiluminescence immunoassay. According to kit manufacturer, the test discriminates among  
104 negative (<12AU/mL; with 3.8 as the limit of IgG detection), equivocal (12.0 – 15.0 AU/mL) and  
105 truly positive (>15.0 AU/mL) subjects. Of 3985 enrolled subjects, 3462 (87%) were negative, 76  
106 (2%) equivocal and 447 (11%) positive (which together with equivocal summed up to 523 (13%))  
107 (Supplementary Table S1). We decided to group together equivocal and truly positive subjects as  
108 they behaved very similarly both as separate groups or as grouped together (Positive - IgG  $\geq$  12.0

109 AU/ml) in subsequent analyses (for instance in correlation with the number of symptoms, as shown  
110 in Supplementary Fig. S2).

111 The number of individuals exposed to the virus reflected the geographical area where the healthcare  
112 facility was located (Fig. 1). Two hospitals based in Bergamo (Humanitas Gavazzeni and Castelli)  
113 were the most affected as between 35 and 43 % of the subjects was IgG positive. In the other sites  
114 the frequency of IgG positivity ranged between 3% (HMC) and 9% (ICH) (Supplementary Table S2).  
115 We applied a hierarchical (multilevel) model adjusting for clustering of individuals within healthcare  
116 facilities when assessing overall relationships between locations, professional status and the analyzed  
117 variables. Humanitas Gavazzeni in Bergamo was significantly different from all other facilities  
118 except for Castelli in Bergamo (Table 1 and Supplementary Fig. S3,  $p < 0.0001$ , OR and 95%CI  
119 indicated in the table). Interestingly, HMC and HMD which had the lowest incidence of IgG positive  
120 individuals (3% and 3.8%, respectively), are located in Varese, which is one of the less COVID-19  
121 affected province in Lombardy (<https://www.lombardianotizie.online/coronavirus-casi-lombardia/>).  
122 In agreement, the percentage of patients hospitalized for COVID-19 was higher in Bergamo at  
123 Gavazzeni (56%), intermediate in Milan at ICH (36%) and low in Varese at HMD (10%) (not shown).

Comparison	Odds ratio estimates	Lower 95% CI	Upper 95% CI	p-value
Humanitas Rozzano (ICH)	0.181	0.146	0.226	<.0001
Humanitas University (HU)	0.156	0.062	0.396	
Humanitas Medical Care (HMC)	0.057	0.014	0.234	
Humanitas San Pio X	0.126	0.074	0.215	
Humanitas Mater Domini (HMD)	0.073	0.041	0.131	
Humanitas Castelli	1.384	0.943	2.032	
Humanitas Gavazzeni - ref	1.00			

124

125

126 **Frequency of IgG positivity and correlation with gender, BMI and smoking**

127 IgG positivity ( $\geq 12$  AU/mL) was different between males (11.4%) and females (14%)  
128 (Supplementary Table S1), and, as shown in Table 2a, this difference was retained in the multilevel  
129 logistic analysis (OR=0.73; 95%CI 0.57-0.94,  $p=0.016$ ). Thus, the observed effect was associated to  
130 a difference in gender sensitivity to infection or to the ability to mount an antibody response rather  
131 than to a bias of the recruitment itself.

132 Interestingly, IgG positivity among smokers was lower (7.4% vs 13.5%) (OR=0.45; 95%CI 0.34-  
133 0.60,  $p<0.0001$ , Supplementary Fig. S4) confirming the trend effect observed with the multilevel  
134 logistic analysis (OR=0.48; 95%CI 0.38-0.61,  $p<0.0001$ , Table 2a). On the contrary, there was no  
135 statistically significant difference according to BMI (Table 2a).

Comparison	Odds ratio estimates	Lower 95% CI	Upper 95% CI	p-value	
Physician vs Other Role	1.10	0.79	1.53	0.5039	
Surgeon vs Other Role	1.10	0.71	1.71		
Anesthesiologist vs Other Role	0.49	0.22	1.08		
Physiotherapist vs Other Role	1.17	0.56	2.46		
Nurse vs Other Role	1.16	0.87	1.55		
Researcher vs Other Role	0.94	0.47	1.90		
Biologist vs Other Role	0.69	0.20	2.37		
Student vs Other Role	1.07	0.29	3.95		
Radiology Technician vs Other Role	0.53	0.25	1.13		
Lab. Technician vs Other Role	0.75	0.31	1.86		
Staff vs Other Role	1.04	0.67	1.61		
Smoking (Number of cigarettes/day)	0.48	0.38	0.61		<.0001
Age >60 vs $\leq 60$	0.35	0.15	0.83		0.0166
Gender male vs female	0.73	0.57	0.94	0.0158	
Interaction Age*Gender	2.98	1.08	8.21	0.0352	
BMI	1.11	0.98	1.26	0.1127	

136

137

138 **Frequency of IgG positivity and correlation with age**

139 We then evaluated whether there was a difference in the positivity to IgG according to age. We found  
140 that there was a Gaussian distribution of the number of IgG positive ( $\geq 12$  AU/mL) individuals across  
141 the age range (Fig. 2a), but then when analyzing the frequency of positivity at the different age ranges  
142 we observed an age dependent reduction of IgG positive individuals (Fig. 2b). However, this age-  
143 dependency was primarily due to the female rather than the male population, particularly for subjects  
144 either young (20-40 yo) or older than 60 yo (test for heterogeneity of trend effect age between male  
145 and female  $p=0.0024$  Fig. 2b). In older than 60 yo, IgG positivity dropped from 12% in males to 5%  
146 in females (Table 2a and Fig. 2b). This indicates that females are more likely to be infected – or to  
147 induce an IgG response - when young, and less likely at ages higher than 60 yo.

148

149 **Frequency of IgG positivity and correlation with viral positivity at time of testing**

150 Following the guidelines of the national health system, all 523 subjects with IgG  $\geq 12$  AU/ml  
151 underwent a rinopharyngeal swab for SARS-CoV-2 RNA viral detection. We found that 39 (7.6%)  
152 individuals resulted positive for viral RNA detection (Table 3). However, in 31 of these (79.5%), the  
153 subjects tested negative for at least one of the genomic sequences of the three SARS-CoV-2 gene  
154 targets: *E*, *RdRp* and *N*. To rule out that the negative population ( $3.8 < \text{IgG} < 12$  AU/mL) comprised  
155 individuals in the early phases of viral infection, a sample of 283 (35.4%) individuals underwent a  
156 rinopharyngeal swab for SARS-CoV-2 RNA viral detection. All of them resulted negative to the swab  
157 confirming the negativity of the test below 12 AU/mL (Table 3).



158

Table 3 Rinopharyngeal swab positivity in relation to IgG positivity

	Rinopharyngeal swab results													
	Total		Negative			Positive low load			Positive			Positive low load + Positive		
	N	% of total	N	% of level	% of total	N	% of level	% of total	N	% of level	% of total	N	% of level	% of total
<b>IgG results</b>														
Negative (3.8<IgG<12AU/mL)	283	35.4	283	100.0	37.2	.	.	.	.	.	.	.	.	.
Equivocal (12÷15AU/mL)	75	9.4	70	93.3	9.2	3	4.0	9.7	2	2.7	25.0	5	6.7	12.8
Truly Positive (>15AU/mL)	441	55.2	407	92.3	53.6	28	6.3	90.3	6	1.4	75.0	34	7.7	87.2
Positive (≥12AU/mL)	516	64.6	477	92.4	62.8	31	6.0	100.0	8	1.6	100.0	39	7.6	100.0
<b>Total</b>	799	100.0	760	95.1	100.0	31	3.9	100.0	8	1.0	100.0	39	4.9	100.0

159

160 **Frequency of IgG positivity and correlation with professional status**

161 We then evaluated the proportion of IgG positive individuals ( $\geq 12$  AU/mL) across the different  
162 professional workers and found that there was no statistically significant difference when taking into  
163 account age, gender and their interaction, smoking habits, BMI and location (Table 2a) even though  
164 some professionals worked from home from the beginning of lockdown (such as the administrative  
165 staff), suggesting that their exposure to the virus was not occurring at work. We thus assessed which  
166 could have been the major driver of transmission of the virus on the basis of the self-reported  
167 questionnaire. We found heterogeneity of IgG positivity among drivers ( $p < 0.0001$ ). Compared with  
168 group referring no contact, IgG positivity correlated most with family contacts (OR=4.73; 95%CI  
169 2.93-7.65), and not with either a colleague or a patient, suggesting that this was likely the major cause  
170 of viral exposure (Tables 4a-b). This finding is in line with a recent report on testing the serology of  
171 healthcare workers and their families<sup>13</sup>.

**Table 4a Association of contacts with IgG positivity**

	IgG results									
	Total		Negative (<12AU/mL)		Equivocal (12-15AU/mL)		Truly Positive (>15AU/mL)		Positive (≥12AU/mL)	
	N	% of total	N	%	N	%	N	%	N	%
<b>Contagion Modality</b>										
None	1073	27.0	1010	94.1	11	1.0	52	4.8	63	5.9
Colleague	853	21.5	740	86.8	20	2.3	93	10.9	113	13.2
Patient	1599	40.2	1346	84.2	31	1.9	222	13.9	253	15.8
Family member	138	3.5	95	68.8	7	5.1	36	26.1	43	31.2
Other	310	7.8	262	84.5	7	2.3	41	13.2	48	15.5
<b>Total</b>	<b>3973</b>	<b>100.0</b>	<b>3453</b>	<b>86.9</b>	<b>76</b>	<b>1.9</b>	<b>444</b>	<b>11.2</b>	<b>520</b>	<b>13.1</b>

172

**Table 4b Summary measures of association of contacts with IgG positivity**

Contagion Modality	Odds ratio	95% CI	
None	Ref		
Colleague	1.59	1.11	2.27
Patient	1.83	1.29	2.60
Family member	4.73	2.93	7.65
Other	2.05	1.32	3.18
<b>P value (Wald test)</b>	<b>&lt;0.0001</b>		

Multilevel logistic analysis, considering subjects nested in the hospital site. Adjusted for role, age (cut off=60 years) gender, BMI, smoking habits.

173

174 **Frequency of IgG positivity and correlation with symptoms, comorbidities and vaccinations**

175 We then evaluated whether there was a correlation between the number and typology of self-reported  
 176 symptoms and the frequency of antibody response both as number of individuals (Fig. 3a and 3b) and  
 177 as percentage on the whole population (Fig. 3c and 3d). As shown in Figure 3, when analyzing  
 178 individuals deemed to be positive on the basis of the amount of IgG (≥12 AU/mL) we observed a two  
 179 phases decay: first a similar frequency (a) or number (c) of subjects with 0 to 7 concomitant  
 180 symptoms, and then a drop of individuals at higher number of concomitant symptoms. This  
 181 distribution followed a sigmoidal, four parameter logistic curve whereby X is the number of

182 symptoms ( $R^2=0.97$ ). By contrast, in the population with IgG <12 AU/mL we found a higher number  
 183 (b) or frequency (d) of individuals with 0, 1 or 2 symptoms and the distribution was following an  
 184 exponential curve ( $R^2=0.9975$ ). The multilevel logistic analysis showed that, besides pneumonia,  
 185 among the symptoms, fever, anosmia/dysgeusia (loss of smell or taste) and chest pain were those that  
 186 best characterized the IgG positive population, particularly when collated (Table 2b).

Table 2b Multilevel Logistic model for symptoms adjusted for professional status, age, gender and their interaction, smoking habits, BMI				
Comparison	Odds ratio estimates	Lower 95% CI	Upper 95% CI	p-value
Fever	5.79	3.58	9.36	<.0001
Low-grade Fever	1.41	0.86	2.33	0.1735
Cough	1.08	0.69	1.71	0.7266
Sore Throat/Runny nose	0.93	0.61	1.42	0.7332
Muscle pain	1.31	0.83	2.06	0.2453
Asthenia	0.92	0.57	1.47	0.7263
Anosmia/Dysgeusia	11.51	7.06	18.77	<.0001
Gastrointestinal disorders	0.77	0.49	1.18	0.2299
Conjunctivitis	1.35	0.77	2.36	0.2887
Dyspnea	1.14	0.64	2.06	0.6539
Chest pain	2.17	1.26	3.74	0.0055
Tachycardia	0.64	0.38	1.09	0.0999
Pneumonia	9.00	1.34	60.66	0.0240

187  
 188 Indeed, dividing the population according to the number of symptoms, IgG positivity increased from  
 189 11.9% in the absence of symptoms to 42.8% in the presence of 5 symptoms or more (Table 5), and  
 190 the value of the AUC derived by the multivariable model was 79%, while the combination of just  
 191 fever versus anosmia/dysgeusia had an AUC of 78% (Supplementary Fig. S5). 81.2% of individuals  
 192 presenting both anosmia/dysgeusia and fever resulted SARS-CoV-2 infected. The sensitivity,  
 193 specificity and positive Likelihood ratio of anosmia/dysgeusia and fever were 25.6%, 99.1% and  
 194 28.6, respectively (Supplementary Table S3).

195 These results indicate that there are symptoms that best characterize the paucisymptomatic COVID-  
 196 19 population and that when individuals present with fever and anosmia/dysgeusia they are likely to  
 197 have SARS-CoV-2 infection.

198 Comorbidities (in particular cardiovascular diseases and metabolic syndrome) have been associated  
 199 to a worse prognosis of COVID-19 patients <sup>14</sup>. Hence we wanted to assess whether the presence of  
 200 comorbidities correlated with a different incidence of IgG positivity. However, when we analyzed if  
 201 there was any correlation between IgG positivity and comorbidities, we could not detect any  
 202 (Supplementary Tables S4a and S4b). The same was true for the number or type of vaccination (flu,  
 203 pneumococcus, tuberculosis or other vaccines) (Supplementary Tables S5a and S5b).

204

	IgG results													
	Total		Negative (<12AU/mL)			Equivocal (12÷15AU/mL)			Truly Positive (>15AU/mL)			Positive (≥12AU/mL)		
	N	% of total	N	% of level	% of total	N	% of level	% of total	N	% of level	% of total	N	% of level	% of total
<b>Fever</b>														
No	3488	87.5	3179	91.1	91.8	56	1.6	73.7	253	7.3	56.6	309	8.9	59.1
Yes	497	12.5	283	56.9	8.2	20	4.0	26.3	194	39.0	43.4	214	43.1	40.9
<b>Low-grade Fever</b>														
No	3557	89.3	3149	88.5	91.0	63	1.8	82.9	345	9.7	77.2	408	11.5	78.0
Yes	428	10.7	313	73.1	9.0	13	3.0	17.1	102	23.8	22.8	115	26.9	22.0
<b>Cough</b>														
No	3074	77.1	2750	89.5	79.4	57	1.9	75.0	267	8.7	59.7	324	10.5	62.0
Yes	911	22.9	712	78.2	20.6	19	2.1	25.0	180	19.8	40.3	199	21.8	38.0
<b>Sore Throat/Runny nose</b>														
No	2687	67.4	2391	89.0	69.1	50	1.9	65.8	246	9.2	55.0	296	11.0	56.6
Yes	1298	32.6	1071	82.5	30.9	26	2.0	34.2	201	15.5	45.0	227	17.5	43.4
<b>Muscle pain</b>														
No	2957	74.2	2707	91.5	78.2	42	1.4	55.3	208	7.0	46.5	250	8.5	47.8
Yes	1028	25.8	755	73.4	21.8	34	3.3	44.7	239	23.2	53.5	273	26.6	52.2
<b>Asthenia</b>														
No	3237	81.2	2948	91.1	85.2	43	1.3	56.6	246	7.6	55.0	289	8.9	55.3
Yes	748	18.8	514	68.7	14.8	33	4.4	43.4	201	26.9	45.0	234	31.3	44.7

	IgG results													
	Total		Negative (<12AU/mL)			Equivocal (12÷15AU/mL)			Truly Positive (>15AU/mL)			Positive (≥12AU/mL)		
	N	% of total	N	% of level	% of total	N	% of level	% of total	N	% of level	% of total	N	% of level	% of total
<b>Anosmia/Dysgeusia</b>														
No	3617	90.8	3348	92.6	96.7	46	1.3	60.5	223	6.2	49.9	269	7.4	51.4
Yes	368	9.2	114	31.0	3.3	30	8.2	39.5	224	60.9	50.1	254	69.0	48.6
<b>Gastrointestinal disorders</b>														
No	3165	79.4	2812	88.8	81.2	52	1.6	68.4	301	9.5	67.3	353	11.2	67.5
Yes	820	20.6	650	79.3	18.8	24	2.9	31.6	146	17.8	32.7	170	20.7	32.5
<b>Conjunctivitis</b>														
No	3583	89.9	3145	87.8	90.8	64	1.8	84.2	374	10.4	83.7	438	12.2	83.7
Yes	402	10.1	317	78.9	9.2	12	3.0	15.8	73	18.2	16.3	85	21.1	16.3
<b>Dyspnea</b>														
No	3726	93.5	3291	88.3	95.1	67	1.8	88.2	368	9.9	82.3	435	11.7	83.2
Yes	259	6.5	171	66.0	4.9	9	3.5	11.8	79	30.5	17.7	88	34.0	16.8
<b>Chest pain</b>														
No	3664	91.9	3235	88.3	93.4	62	1.7	81.6	367	10.0	82.1	429	11.7	82.0
Yes	321	8.1	227	70.7	6.6	14	4.4	18.4	80	24.9	17.9	94	29.3	18.0
<b>Tachycardia</b>														
No	3553	89.2	3112	87.6	89.9	62	1.7	81.6	379	10.7	84.8	441	12.4	84.3
Yes	432	10.8	350	81.0	10.1	14	3.2	18.4	68	15.7	15.2	82	19.0	15.7
<b>Pneumonia</b>														
No	3951	99.1	3457	87.5	99.9	75	1.9	98.7	419	10.6	93.7	494	12.5	94.5
Yes	34	0.9	5	14.7	0.1	1	2.9	1.3	28	82.4	6.3	29	85.3	5.5
<b>Other symptoms</b>														
No	3828	96.1	3341	87.3	96.5	71	1.9	93.4	416	10.9	93.1	487	12.7	93.1
Yes	157	3.9	121	77.1	3.5	5	3.2	6.6	31	19.7	6.9	36	22.9	6.9
<b>Number of symptoms</b>														
0 symptoms	1380	34.6	1318	95.5	38.1	11	0.8	14.5	51	3.7	11.4	62	4.5	11.9
1 symptoms	814	20.4	758	93.1	21.9	10	1.2	13.2	46	5.7	10.3	56	6.9	10.7
2 symptoms	582	14.6	517	88.8	14.9	11	1.9	14.5	54	9.3	12.1	65	11.2	12.4
3 symptoms	411	10.3	350	85.2	10.1	10	2.4	13.2	51	12.4	11.4	61	14.8	11.7
4 symptoms	256	6.4	201	78.5	5.8	8	3.1	10.5	47	18.4	10.5	55	21.5	10.5
5 or more symptoms	542	13.6	318	58.7	9.2	26	4.8	34.2	198	36.5	44.3	224	41.3	42.8
<b>Fever and anosmia/dysgeusia</b>														
No	3285	82.4	3096	94.2	89.4	39	1.2	51.3	150	4.6	33.6	189	5.8	36.1

Table 5 Association of symptoms with IgG positivity

	IgG results													
	Total		Negative (<12AU/mL)			Equivocal (12÷15AU/mL)			Truly Positive (>15AU/mL)			Positive (≥12AU/mL)		
	N	% of total	N	% of level	% of total	N	% of level	% of total	N	% of level	% of total	N	% of level	% of total
Anosmia/dysgeusia	203	5.1	83	40.9	2.4	17	8.4	22.4	103	50.7	23.0	120	59.1	22.9
Fever	332	8.3	252	75.9	7.3	7	2.1	9.2	73	22.0	16.3	80	24.1	15.3
Fever and anosmia/dysgeusia	165	4.1	31	18.8	0.9	13	7.9	17.1	121	73.3	27.1	134	81.2	25.6
<b>Total</b>	<b>3985</b>	<b>100.0</b>	<b>3462</b>	<b>86.9</b>	<b>100.0</b>	<b>76</b>	<b>1.9</b>	<b>100.0</b>	<b>447</b>	<b>11.2</b>	<b>100.0</b>	<b>523</b>	<b>13.1</b>	<b>100.0</b>

205

206

### 207 **IgG plasma levels and population characteristics**

208 The frequency of IgG positive ( $\geq 12$  AU/mL) individuals clearly reflected the increased exposure to  
 209 the virus across the analyzed geographical areas, correlated with COVID-19-related symptoms and  
 210 showed a higher proportion of positivity within young females and non-smoker subjects. However,  
 211 an advantage of using a quantitative assay for IgG testing is that it is also possible to assess the  
 212 magnitude of the immune response. Hence, we analyzed the data also in relation to IgG plasma levels.  
 213 First, we assessed whether the level of plasma IgG correlated with positivity to the rinopharyngeal  
 214 swab. To take into account a possible temporal confounding factor of symptoms detection and  
 215 serological test, we compared the IgG plasma levels of swab positive or swab negative individuals  
 216 with that of the ascertained COVID-19 population (between the months of March and April). We  
 217 could not detect any statistically significant difference among IgG  $\geq 12$  subjects with rinopharyngeal  
 218 swab positive or negative and the COVID-19 populations, suggesting that the positivity to the swab  
 219 does not correlate with a higher IgG plasma level (Fig. 4a). However, we observed that physicians  
 220 (including anesthesiologists and physiotherapists) had a higher level of plasmatic IgG as confirmed  
 221 by statistically different odds ratios (Supplementary Table S6,  $p=0.02$  and odds ratios in  
 222 Supplementary Fig. S6).

223

## 224 **IgG plasma levels BMI, gender and smoking**

225 As we observed a higher proportion of positivity (IgG $\geq$ 12 AU/mL) within females that may indicate  
226 either a higher exposure to the virus, a higher incidence of infection or a higher ability to mount an  
227 immune response, we evaluated whether this difference was paralleled by increased IgG plasma  
228 levels. We found out that there was no difference between IgG plasma levels of males versus females,  
229 suggesting a similar magnitude of the immune response (Fig. 4b, Supplementary Table S6). However,  
230 when assessing a difference of IgG plasma levels across age ranges, there was a trend towards an  
231 increased level of plasma IgG towards the older age ( $p = 0.0002$ , total;  $p = 0.0085$ , females;  $p =$   
232  $0.008$ , males) (Fig. 4c). The difference of IgG response between females and males in relation to age  
233 remains quite intriguing and we still have to understand its relevance with the higher incidence of  
234 COVID-19 in males<sup>15</sup>. Interestingly, while smoking seemed to inversely correlate with the frequency  
235 of IgG positive individuals, it did not have any effect on IgG plasma levels (Supplementary Fig. S7a)  
236 even in relation to the number of smoked cigarettes per day (Supplementary Fig. S7b and S6). On the  
237 contrary, BMI, which was not influencing the frequency of IgG positive individuals, was affecting  
238 the plasma concentration of IgG: the higher the BMI, the higher the level of IgG (Supplementary  
239 Table S6,  $p= 0.0009$ )

240

## 241 **IgG plasma levels and symptoms**

242 As we have shown that the distribution of the IgG positive ( $\geq$ 12 AU/mL) population followed a  
243 sigmoidal curve with a constant level of individuals up to 7 concomitant symptoms, we thus evaluated  
244 whether there was also a correlation between the plasma level of IgG and the number of symptoms.  
245 The distribution of IgG levels in the population versus the cumulative symptoms was very similar  
246 when analyzing the whole population or those of ICH and Gavazzeni which had different proportions  
247 of IgG positive individuals (Supplementary Fig. S8). They were characterized by similar areas under  
248 the curve (All: 571; ICH: 550; Gavazzeni: 522) and the respective Receiver Operating Characteristics

249 (ROC) curves were perfect (100%), confirming maximal specificity and sensitivity of the IgG test at  
250 IgG  $\geq 12$  AU/mL (Supplementary Fig. S8). Interestingly, we observed a direct correlation between  
251 the number of concomitant symptoms and an increase in the level of plasma IgG (Fig. 5a,  
252 Supplementary Table S7; CI are reported in the table for the different symptoms and combinations  
253 thereof,  $p < 0.014$ ). By contrast, the level of IgG in the population with values  $< 12$  AU/mL was  
254 constant, regardless of the number of symptoms (Fig. 5b). When we analyzed the levels of IgG in  
255 relation to symptoms, we found that those subjects reporting fever, anosmia/dysgeusia, or pneumonia  
256 had all significant odds ratios (Fig. 5c). In addition, subjects with fever, cough, muscular pain,  
257 asthenia, anosmia/dysgeusia, dyspnea, chest pain, tachycardia or pneumonia, they all had higher IgG  
258 levels than those without symptoms (Supplementary Table S7,  $p$  values and CI are reported in the  
259 table for the different symptoms). This confirms that presence of symptoms correlates with higher  
260 IgG levels as shown in Fig. 5a. Further, combination of fever with anosmia/dysgeusia and/or dyspnea  
261 characterized populations with higher IgG plasma levels (Supplementary Table S7,  $p < 0.0001$ , CI are  
262 reported in the table for the different symptoms and combinations thereof), also when considering the  
263 whole population regardless of IgG positivity (Fig. 5d,  $p < 0.0001$  in a LR test for global null  
264 hypothesis ordinal logistic analysis). When considering the level of IgG  $\geq 12$  the distribution of IgG  
265 plasma levels was very similar in subjects with these symptoms (Fig. 5e), however we found  
266 statistically significant differences in odds ratios when combining fever with anosmia/dysgeusia and  
267 fever with anosmia/dysgeusia and dyspnea (Fig. 5f,  $p = 0.0004$  in a LR test for global null hypothesis  
268 ordinal logistic analysis). This confirms that these symptoms are the ones best characterizing SARS-  
269 CoV-2 infection. No statistically significant differences in IgG plasma levels were observed in  
270 relation to comorbidities. In steatosis/cirrhosis we had only two cases in which we found an inverse  
271 correlation but this should be confirmed on a higher number of individuals ( $p = 0.0211$ , CI 12.30-  
272 12.70, Supplementary Table S8). Moreover, we observed an interesting inverse correlation between  
273 pneumococcal vaccination and IgG plasma levels ( $p = 0.03$ , CI 15-29.40, Supplementary Table S9).



## 274 **Discussion**

275 Here we report a comprehensive analysis of nearly 4000 individuals from different healthcare  
276 facilities representative of dramatically different levels of SARS-CoV-2 exposure in Lombardy, the  
277 most affected region by COVID-19 in Italy. We observed a range of positivity which strongly  
278 correlated with the geographical area of viral exposure from 3% in the Varese area to 43% in the  
279 Bergamo area, which were respectively the most or less COVID-affected Lombardy provinces. The  
280 proportion of IgG positive females was higher than that of males in all of the analyzed sites. However,  
281 we found a lower proportion of IgG positive individuals in females older than 60 years old than in  
282 age-matched males. This is quite intriguing as males and females are equally affected by COVID-19,  
283 but males have a worse prognosis<sup>16</sup>. Through the use of a quantitative antibody test of IgG we were  
284 also able to assess the magnitude of the immune response. We found that younger males (below 40  
285 yo) displayed reduced IgG plasma levels than older males (from 41 yo onwards). This is in line with  
286 a recent report in COVID-19 patients showing that younger patients developed lower titers of IgG<sup>17</sup>  
287 and another one showing that higher IgG titers in the plasma of convalescent individuals were  
288 associated to older age and male sex<sup>18</sup>. Thus, also in the healthy population, younger males exposed  
289 to the virus develop a reduced antibody response. Hence, it is very important when analyzing the  
290 serology to SARS-CoV-2 to take into account both age and sex.

291 Our study differs from the one reported by Sood and colleagues in Los Angeles County<sup>19</sup> as we used  
292 a quantitative antibody test and analyzed a large hospital population which ranged from healthcare  
293 professionals, researchers and administrative staff from 7 different facilities. Indirectly, we show that  
294 it is rather the environment than the hospital professional exposure which dictates the probability of  
295 contracting SARS-CoV-2 infection. Indeed, we show a higher percentage of IgG positive individuals  
296 in areas with a higher incidence of COVID-19 and among subjects who had been in contact with  
297 COVID-19 affected relatives. Further, we observed a similar proportion of IgG positive individuals

298 among healthcare professionals functioning at hospital and administrative staff working from home.  
299 However, the magnitude of the antibody response in terms of plasma levels of IgG was higher in  
300 healthcare professionals suggesting that these individuals developed a more sustained immune  
301 response. We were also able to pinpoint 11.9% of IgG positive individuals which were completely  
302 asymptomatic and another 23.1% of paucisymptomatic subjects with 1 or 2 symptoms. This  
303 percentage differs from that observed in two recent studies analyzing SARS-CoV-2 infection via viral  
304 testing across different population types<sup>20,21</sup>. Among healthcare workers, 57% of the subjects were  
305 asymptomatic/paucisymptomatic<sup>20</sup> while in a wider population in the Italian municipality of Vo'  
306 Euganeo, that underwent lockdown soon after detecting the first case of COVID-19, the percentage  
307 of asymptomatics was 42.5<sup>21</sup>. This suggests that there is still a good proportion of individuals that  
308 probably do not develop antibodies, or develop them at low/undetectable levels. This would be in line  
309 with recent studies showing that IgG positivity is short-lived<sup>22</sup> and relatives of COVID-19 patients  
310 carry T cells specific for SARS-CoV-2 but do not seroconvert, suggesting that also IgG positivity  
311 may not detect all individuals exposed to the virus<sup>23</sup>. However, if we expand our analysis to  
312 healthcare workers without symptoms but with IgG >3.8 AU/mL, and not simply those IgG  $\geq$  12  
313 AU/mL, which are considered 'positive' by the manufacturer of the test, the percentage of positivity  
314 raises to 40%. This may indicate that there may be different exposures to the virus which result in a  
315 wide range of levels of antibody production, including those between 3.8 and 12 AU/mL. As in 283  
316 subjects with IgG 3.8-12 AU/mL we performed a viral test, and it was negative, this indicates that  
317 they probably were exposed to the virus earlier and succeeded in eliminating it without a strong  
318 antibody response. Thus, it would be interesting to evaluate which serology test was used and which  
319 cut-off value was considered for determining IgG positivity in studies where IgG responses were  
320 negative, but T cell responses were present<sup>23</sup>. In addition, some of SARS-CoV-2 viral peptides  
321 activated T cells also from unexposed individuals suggesting that some cross-reactivity could occur,  
322 maybe in response to previous infections with common cold coronaviruses<sup>24</sup>.

323 Among the symptoms, those that characterized most the IgG positive population were fever and  
324 anosmia/dysgeusia. 81.2% of individuals presenting both anosmia/dysgeusia and fever resulted  
325 SARS-CoV-2 infected, indicating that these symptoms are strongly associated to COVID-19.  
326 Selected vaccines such as BCG have been suggested to increase pathogen-agnostic off-target  
327 resistance to infectious agents <sup>25</sup>. However, a recent report showed no differences in incidence of  
328 COVID-19 in BCG vaccinated versus non vaccinated patient population <sup>26</sup>. In line with this, we did  
329 not observe a correlation between IgG positivity and BCG vaccination.  
330 Intriguingly, we observed an inverse correlation between induction of an antibody response and  
331 smoking habit. This may indicate either a lower incidence of SARS-CoV-2 infection in smokers, or  
332 their inability to induce an immune response to the virus. The former is more likely as a large study  
333 (114,545 individuals) in Israel recently showed that the risk of SARS-CoV-2 positive testing in  
334 smoking individuals is reduced by half <sup>27</sup>. When analyzing the concentrations of IgG in plasma, we  
335 found no differences between males and females, nor in smoking habits. However, we observed that  
336 the presence of some symptoms such as fever, cough, muscular pain, asthenia, anosmia/dysgeusia and  
337 pneumonia correlated with higher levels of IgG than in subjects without these symptoms. In addition,  
338 we found that the presence of comorbidities did not affect IgG plasma levels except for cirrhosis.  
339 Subjects with cirrhosis had an inverse correlation with IgGs but the number of subjects was very low  
340 and this finding needs to be confirmed. The significance of this is unknown, but the finding that  
341 cirrhotic patients have higher risk of severe COVID <sup>28</sup> may suggest that this condition may affect the  
342 correct development of antibodies. Finally, we found that although very few subjects had anti-  
343 pneumococcal vaccination, these had a reduced level of IgG, while there was no difference among  
344 those vaccinated with flu vaccine. A recent study has shown an inverse correlation between  
345 nasopharyngeal swab positivity and flu and pneumococcus vaccinations suggesting protection in  
346 vaccinated individuals <sup>29</sup>. Another report on the Italian population, based on regional and not on  
347 individual data, has shown an inverse correlation between COVID-19 cases and coverage of flu

348 vaccinations, suggesting again a protective role of flu vaccination<sup>30</sup>. It is possible that flu vaccination,  
349 by inhibiting concomitant infection, may result in a better prognosis of the SARS-CoV-2 infected  
350 individuals which becomes evident only when analyzing COVID-19 cases and not asymptomatic or  
351 paucisymptomatic individuals. Why individuals vaccinated against pneumococcus should produce  
352 less antibodies remains to be evaluated.

353

354 In conclusion, our study has some limitations, as it is monitoring healthcare workers, and thus it does  
355 not reflect a comprehensive population as a good proportion of professionals are women and there is  
356 an underrepresentation of the elderly due to working age limit. However, we show that antibody  
357 testing can identify the individuals that were exposed to SARS-CoV-2 and is a powerful tool to  
358 retrospectively evaluate viral diffusion, even in asymptomatic individuals. Another limitation of the  
359 study is that we may have missed the population of subjects which do not develop an antibody  
360 response or that is reduced over time. As our study is ongoing we will assess the evolution of the IgG  
361 response over a planned follow up of one year, allowing for measuring the duration of the antibody  
362 response. Should a second wave of SARS-CoV-2 infection occur, the wide range of IgG serology in  
363 the different sites will be particularly valuable as it will allow us to assess the role of antibodies in  
364 viral protection. As we also collected the PBMC from a good proportion of our cohort, this will allow  
365 us to evaluate whether the T cell response lasts longer than the B cell response and may highlight  
366 individuals exposed to the virus which have not seroconverted, or whose level of antibodies was  
367 below 12 AU/mL. The results presented here suggest that hospital health care professionals,  
368 researchers and administrative staff can provide invaluable information to assess variables affecting  
369 the immune response to SARS-CoV-2 as a snapshot and during the follow-up.

370

371

## 372 **Methods**

### 373 **Clinical Study**

374 The study has been approved by the international review board of Istituto Clinico Humanitas for all  
375 participating institutes (clinicaltrials.gov NCT04387929). Accrual was on a voluntary basis: it started  
376 on April 28th and more than 65% of employees participated as of May 16th, 2020. 7 different centers  
377 participated to the study: Istituto Clinico Humanitas (ICH), Rozzano, Mi; Humanitas Gavazzeni,  
378 Bergamo; Humanitas Castelli, Bergamo; Humanitas Mater Domini (HMD), Castellanza (Va);  
379 Humanitas Medical Center, HMC, Varese, Mi; Humanitas University, Pieve Emanuele (Mi);  
380 Humanitas San Pio X, Milano. All participants signed an informed consent and filled a questionnaire  
381 (Supplementary Data S1) before blood collection. In order to be tested, subjects had to fill in the  
382 questionnaire. Only after filling the questionnaire in its entirety, would the individuals be scheduled  
383 for blood sampling. Hence, we obtained a 100% complete data.

384 All subjects with IgG > 12 AU/mL underwent a rinopharyngeal swab for SARS-CoV-2 viral RNA  
385 detection.

386

### 387 **SARS-CoV-2 RT-PCR**

388 Rinopharyngeal swab were tested with a commercial RT-PCR assay (Allplex™2019-nCoV Assay  
389 – Seegene, Seoul, South Korea), according to manufacturer's instruction. RNA extraction was  
390 performed using Seegene Nimbus, a liquid handler workstation, Real-time PCR was run on a CFX96  
391 TMDx thermocycler (Bio-Rad Laboratories, Inc, CA, USA) and subsequently interpreted by  
392 Seegene's Viewer software. The test target three viral genes (*E*, *RdRp* and *N*).

393

### 394 **IgG determination**

395 For the determination of IgG anti SARS-CoV-2 the Liaison SARS-CoV-2 S1/S2 IgG assay (DiaSorin,  
396 Saluggia (VC), Italy) was used <sup>31</sup>. The method is an indirect chemiluminescence immunoassay for  
397 the determination of anti-S1 and anti-S2 specific antibodies. Intra- and inter-assay coefficient of  
398 variation are <1.9% and <3.7% respectively. In the datasheet of the test, in a cohort of 304 COVID-  
399 19 patients 97.5% of the samples above 15 AU/mL and 86% of those with IgG>12 AU/mL resulted  
400 positive for neutralizing antibodies with a titer >1:40 in the Plaque Reduction Neutralization Test  
401 (PRNT).

402 The sensitivity of the test as reported by the manufacturer is 90.4% (79.4% - 95.8%) while the  
403 specificity is 98.5% (97.5% - 99.2%).

404

#### 405 **Statistics**

406 This was a cross sectional study aimed at determining the frequency of plasma anti- SARS-CoV-2  
407 IgG antibodies in nearly 4000 (3985) employees of 7 different healthcare facilities located in  
408 Lombardy.

409 The serological determination was offered to all the employees of the involved sites and the  
410 anticipated refusal rate was assumed to be 10-15%. The overall IgG positivity was assumed to be  
411 around 10-15% (between 400-600 subjects).

412 Primary endpoint was the number of test positive subjects. Given the study size, the study was able  
413 to estimate the overall positivity with a width of 95% confidence interval equal to 2% and the  
414 positivity for subgroups of at least 200 patients with a width of 95% confidence interval equal to 9%.

415 No power analysis was performed to calculate the sample size.

416 As secondary endpoints we aimed to investigate the factors associated to plasma anti-SARS-CoV-2  
417 IgG positivity.

418 Basic demographic characteristics, including age, sex, smoking status, comorbidities, previous  
419 vaccinations and symptoms were recorded and their association with IgG positivity was tabulated in  
420 contingency tables and described by means of relative and absolute frequencies.

421 The association between these characteristics and IgG positivity was assessed by univariate logistic  
422 model and measured with the odds ratio (OR) and 95% Confidence Interval (CI) for each factor. A  
423 multivariable analysis, was also performed in order to assess the effect of characteristics of interest  
424 after adjustment for the other variables.

425 Furthermore, since our data have clustered structures as patients were clustered within hospitals, a  
426 multilevel model was also used to analyse data. The binary outcome (positive vs. negative serological  
427 assessment) was chosen and analysis was approached with a generalized linear model with the logic  
428 link, which is the logistic regression model. In our multilevel analysis there was a patient level and  
429 an hospital level.

430 We produced two models. In the first one we want to assess the effect of role, gender, age, BMI and  
431 cigarette smoking on the risk of positive serology. We estimated a random intercept model for  
432 hospital profiling and treat the hospital effects as random effects only. The role of subjects was  
433 considered related to the hospital attributes, while the subject level attributes were age (grouped in  
434  $>60, \leq 60$  years) and gender, BMI ( $\leq 20, \leq 25, \leq 30, \leq 35, > 35$ ) and number of smoked cigarettes/day  
435 ( $no, \leq 10, \leq 20 > 20$ ). BMI and cigarette smoking were considered as continuous variables. The others  
436 variables are all categorical. The interaction term of age\*gender was included in the model.

437 In the second one we explored the relationship between vaccinations, symptoms and serological  
438 positivity, after adjustment for the previous factors, still considering a hierarchical model. This was  
439 obtained adding the symptoms, defined as binary variables, to the previous models. Summary  
440 statistical measures were the odds ratio with relative confidence interval. SAS GLIMMIX procedure  
441 (SAS© 9.4 release) was used for the purpose of analysis.

442 The same approach was used also for analysis of plasma levels. SAS Mixed procedure (SAS© 9.4  
443 release) was used for the purpose of analysis.

444 Kruskal–Wallis and non-parametric tests for trend (Cuzick’s and Mantel-Haenzel test, when  
445 appropriate) have been used for multiple comparisons using Prism 8 Graphpad. For plasma levels,  
446 odds ratio and relative 95%CI based on Wald Test presented in the figures were calculated using  
447 logistic model applied to ordinal data.

448

#### 449 **Data availability**

450 Data supporting the findings of this study are available within the paper and its Supplementary  
451 Information files. All other data are available from the corresponding author upon reasonable  
452 requests.

453

#### 454 **References**

- 455 1 Wang, W. *et al.* Detection of SARS-CoV-2 in Different Types of Clinical Specimens.  
456 *JAMA*, doi:10.1001/jama.2020.3786 (2020).
- 457 2 Xie, X. *et al.* Chest CT for Typical 2019-nCoV Pneumonia: Relationship to Negative RT-  
458 PCR Testing. *Radiology*, 200343, doi:10.1148/radiol.2020200343 (2020).
- 459 3 Ai, T. *et al.* Correlation of Chest CT and RT-PCR Testing in Coronavirus Disease 2019  
460 (COVID-19) in China: A Report of 1014 Cases. *Radiology*, 200642,  
461 doi:10.1148/radiol.2020200642 (2020).
- 462 4 Di Paolo, M. *et al.* False-negative RT-PCR in SARS-CoV-2 disease: experience from an  
463 Italian COVID-19 unit. *ERJ Open Res* **6**, doi:10.1183/23120541.00324-2020 (2020).
- 464 5 Li, Y. *et al.* Stability issues of RT-PCR testing of SARS-CoV-2 for hospitalized patients  
465 clinically diagnosed with COVID-19. *J Med Virol* **92**, 903-908, doi:10.1002/jmv.25786  
466 (2020).
- 467 6 Lippi, G., Simundic, A. M. & Plebani, M. Potential preanalytical and analytical  
468 vulnerabilities in the laboratory diagnosis of coronavirus disease 2019 (COVID-19). *Clin*  
469 *Chem Lab Med*, doi:10.1515/cclm-2020-0285 (2020).



- 470 7 Long, Q. X. *et al.* Antibody responses to SARS-CoV-2 in patients with COVID-19. *Nat*  
471 *Med*, doi:10.1038/s41591-020-0897-1 (2020).
- 472 8 Xiang, F. *et al.* Antibody Detection and Dynamic Characteristics in Patients with COVID-  
473 19. *Clin Infect Dis*, doi:10.1093/cid/ciaa461 (2020).
- 474 9 Huan Ma, W. Z., Hongliang He, Dan Zhao, Yunru Yang, Dehua Jiang, Peigen Yingjie,  
475 Weihuang He, Changcheng Zhao, Ruting Yi, Xiaofang Wang, Bo Wang, Yuanhong Yun  
476 Yang, Arnaud John Kombe Kombe, Chengchao Ding, Jiajia Xie, Yong Gao, Linzhao  
477 Cheng<sup>1</sup>, Yajuan Li, Xiaoling Ma, Tengchuan Jin. COVID-19 diagnosis and study of serum  
478 1 SARS-CoV-2 specific IgA, IgM and IgG by chemiluminescence immunoanalysis.  
479 *MedRxiv*, doi:<https://doi.org/10.1101/2020.04.17.20064907> (2020).
- 480 10 Wolfel, R. *et al.* Virological assessment of hospitalized patients with COVID-2019. *Nature*,  
481 doi:10.1038/s41586-020-2196-x (2020).
- 482 11 B, L. Serology characteristics of SARS-CoV-2 infection since the exposure and post  
483 symptoms onset. doi:10.1101/2020.03.23.20041707.
- 484 12 Zhao, J. *et al.* Antibody responses to SARS-CoV-2 in patients of novel coronavirus disease  
485 2019. *Clin Infect Dis*, doi:10.1093/cid/ciaa344 (2020).
- 486 13 Dioscoridi, L. & Carrisi, C. Covid-19 exposure risk for family members of healthcare  
487 workers: an observational study. *Int J Infect Dis*, doi:10.1016/j.ijid.2020.06.106 (2020).
- 488 14 Onder, G., Rezza, G. & Brusaferro, S. Case-Fatality Rate and Characteristics of Patients  
489 Dying in Relation to COVID-19 in Italy. *JAMA*, doi:10.1001/jama.2020.4683 (2020).
- 490 15 Wu, Z. & McGoogan, J. M. Characteristics of and Important Lessons From the Coronavirus  
491 Disease 2019 (COVID-19) Outbreak in China: Summary of a Report of 72314 Cases From  
492 the Chinese Center for Disease Control and Prevention. *JAMA*, doi:10.1001/jama.2020.2648  
493 (2020).
- 494 16 Jin, J. M. *et al.* Gender Differences in Patients With COVID-19: Focus on Severity and  
495 Mortality. *Front Public Health* **8**, 152, doi:10.3389/fpubh.2020.00152 (2020).
- 496 17 Wu, F. W., A, Liu, M. Wang, O, Chen, J, ..Jinghe Huang. Neutralizing antibody responses  
497 to SARS-CoV-2 in a COVID-19 recovered patient cohort and their implications. *MedXriv*,  
498 doi:10.1101/2020.03.30.20047365 (2020).
- 499 18 Klein, S. *et al.* Sex, age, and hospitalization drive antibody responses in a COVID-19  
500 convalescent plasma donor population. *medRxiv*, doi:10.1101/2020.06.26.20139063 (2020).

- 501 19 Sood, N. *et al.* Seroprevalence of SARS-CoV-2-Specific Antibodies Among Adults in Los  
502 Angeles County, California, on April 10-11, 2020. *JAMA*, doi:10.1001/jama.2020.8279  
503 (2020).
- 504 20 Rivett, L. *et al.* Screening of healthcare workers for SARS-CoV-2 highlights the role of  
505 asymptomatic carriage in COVID-19 transmission. *Elife* **9**, doi:10.7554/eLife.58728 (2020).
- 506 21 Lavezzo, E. *et al.* Suppression of a SARS-CoV-2 outbreak in the Italian municipality of Vo'.  
507 *Nature*, doi:10.1038/s41586-020-2488-1 (2020).
- 508 22 Ni, L. *et al.* Detection of SARS-CoV-2-Specific Humoral and Cellular Immunity in  
509 COVID-19 Convalescent Individuals. *Immunity* **52**, 971-977 e973,  
510 doi:10.1016/j.immuni.2020.04.023 (2020).
- 511 23 Grifoni, A. *et al.* Targets of T Cell Responses to SARS-CoV-2 Coronavirus in Humans with  
512 COVID-19 Disease and Unexposed Individuals. *Cell* **181**, 1489-1501 e1415,  
513 doi:10.1016/j.cell.2020.05.015 (2020).
- 514 24 Weiskopf, D. *et al.* Phenotype and kinetics of SARS-CoV-2-specific T cells in COVID-19  
515 patients with acute respiratory distress syndrome. *Sci Immunol* **5**,  
516 doi:10.1126/sciimmunol.abd2071 (2020).
- 517 25 Netea, M. G. *et al.* Defining trained immunity and its role in health and disease. *Nat Rev*  
518 *Immunol*, doi:10.1038/s41577-020-0285-6 (2020).
- 519 26 Hamiel, U., Kozer, E. & Youngster, I. SARS-CoV-2 Rates in BCG-Vaccinated and  
520 Unvaccinated Young Adults. *JAMA*, doi:10.1001/jama.2020.8189 (2020).
- 521 27 Israel, A., Feldhamer, I., Lahad, A., Levin-Zamir, D., and Lavie, G. Smoking and the risk of  
522 COVID-19 in a large observational population study. *MedRxiv*, doi:  
523 <https://doi.org/10.1101/2020.06.01.20118877> (2020).
- 524 28 Iavarone, M. *et al.* High rates of 30-day mortality in patients with cirrhosis and COVID-19.  
525 *J Hepatol*, doi:10.1016/j.jhep.2020.06.001 (2020).
- 526 29 Noale, M. *et al.* The Association between Influenza and Pneumococcal Vaccinations and  
527 SARS-Cov-2 Infection: Data from the EPICOVID19 Web-Based Survey. *Vaccines (Basel)*  
528 **8**, doi:10.3390/vaccines8030471 (2020).
- 529 30 Amato, M. *et al.* Relationship between Influenza Vaccination Coverage Rate and COVID-  
530 19 Outbreak: An Italian Ecological Study. *Vaccines (Basel)* **8**,  
531 doi:10.3390/vaccines8030535 (2020).

532 31 Bonelli, F. *et al.* Clinical And Analytical Performance Of An Automated Serological Test  
533 That Identifies S1/S2 Neutralizing IgG In COVID-19 Patients Semiquantitatively. *J Clin*  
534 *Microbiol*, doi:10.1128/JCM.01224-20 (2020).

535

## 536 **Acknowledgments**

537 This work was partially supported by a philanthropic donation by Dolce & Gabbana and by the Italian  
538 Ministry of Health (Ricerca corrente).

539 We would like to thank all the employees that volunteered to participate to this study, all the nurses  
540 and personnel that collected the samples and the laboratory technicians that run the serological and  
541 rinopharyngeal tests. We would also like to thank the Humanitas management and staff, Dr Patrizia  
542 Meroni, who warmly supported this study for the safety of the employees. Dr Alice Bertocchi for  
543 critical reading of the manuscript.

544

## 545 **Author contribution**

546 M.T.S. coordinated the laboratory analyses and helped writing the manuscript; E.A.: coordinated the  
547 recruitment and sampling of subjects and participated in clinical study design; V.T.: performed the  
548 statistical analysis and helped writing the manuscript; S.C.: helped in analyzing the data; C.P.:  
549 contributed to data analysis and manuscript writing; M.S.: carried out the laboratory analyses; M.T.:  
550 participated in writing the clinical protocol; M.C.: coordinated the study for the Bergamo sites; A.M.:  
551 helped writing the manuscript and designing the study protocol; M.R.: conceived the study, analyzed  
552 the data and wrote the manuscript.

553

## 554 **Competing interests**

555 The authors declare no competing interests.

556

557 **Figure legends**

558 **Figure 1. Distribution of IgG positivity ( $\geq 12$  AU/mL) across different geographical areas and**  
559 **healthcare facilities in Lombardy, Italy.**

560 Employees from 7 different healthcare facilities were analyzed for their anti-SARS-CoV-2 IgG  
561 positivity. Pie charts show the percentage of negative subjects (IgG  $< 12$  AU/mL) (orange) and that  
562 of positive subjects (IgG  $\geq 12$  AU/mL) (blue) in each site: Istituto Clinico Humanitas (ICH), Rozzano  
563 (MI); Humanitas Gavazzeni, Bergamo; Humanitas Castelli, Bergamo; Humanitas Mater Domini  
564 (HMD), Castellanza (VA); Humanitas Medical Center (HMC), Varese (VA); Humanitas University  
565 (HU), Pieve Emanuele (MI); Humanitas San Pio X, Milan, (MI).

566

567 **Figure 2. Frequency of IgG positivity (IgG  $\geq 12$  AU/mL) by age.**

568 a, b, Histograms show the number (a) and the percentage (b) of positive individuals (IgG  $\geq 12$   
569 AU/mL) divided by age range and sex on the whole population regardless of site; in b, *p*-values were  
570 determined using Cuzick's test for trend. *p* = 0.0374 (total); *p* = 0.0008 (female); *p* = 0.1498 (male);  
571 *p* = 0.0024 (interaction).

572

573 **Figure 3. Distribution of the IgG  $\geq 12$  and IgG  $< 12$  populations versus the number of symptoms**

574 a, c, Distribution of the IgG positive individuals (IgG  $\geq 12$  AU/mL) as number of individuals (a) or  
575 percentage of the population (c) versus the number of self-reported symptoms. The curve that best  
576 interpolated the data was a sigmoidal, four parameter logistic curve whereby X is the number of  
577 symptoms ( $R^2=0.97$ ). b, d, Distribution of the IgG negative individuals (IgG  $< 12$  AU/mL) as number  
578 of individuals (b) or percentage of the population (d) versus the number of self-reported symptoms.  
579 The curve that best interpolated the data was exponential ( $R^2=0.9975$ ).

580

581 **Figure 4. Distribution of IgG plasma levels in the different populations.**

582 a, Distribution of IgG plasma levels in the cohort of IgG positive individuals ( $\text{IgG} \geq 12$  AU/mL)  
583 negative or positive for the rinopharyngeal swab or ascertained COVID-19 disease. b, Distribution  
584 of IgG plasma levels in IgG positive individuals ( $\text{IgG} \geq 12$  AU/mL) divided by sex. c, Distribution  
585 of IgG plasma levels in IgG positive individuals ( $\text{IgG} \geq 12$  AU/mL) divided by age ranges and sex.  
586 In a and b  $p$ -values were determined using Cochran Mantel-Haenzel test for trend. In c, Cuzick's test  
587 for trend was used:  $p = 0.0002$  (total);  $p = 0.0085$  (female);  $p = 0.008$  (male);  $p = 0.4192$  (interaction).

588  
589 **Figure 5. Distribution of IgG plasma levels in relation to symptoms**

590 a, Distribution of IgG plasma levels versus the number of self-reported symptoms in IgG positive  
591 individuals ( $\text{IgG} \geq 12$  AU/mL). b, Distribution of IgG plasma levels versus the number of self-  
592 reported symptoms in IgG negative individuals ( $\text{IgG} < 12$  AU/mL). c, Association between symptoms  
593 and IgG plasma levels.  $p < 0.0001$ , LR test for global null hypothesis. Odds ratio (OR) calculated with  
594 logistic regression for ordinal data. d, Analysis of plasma levels of the whole population in relation  
595 to a combination of symptoms,  $p < 0.0001$ . Odds ratio (OR) calculated with logistic analysis for  
596 ordinal data. e, Distribution of IgG plasma levels versus selected symptoms (alone or in combination)  
597 in individuals with  $\text{IgG} \geq 12$  AU/mL.  $p$ -values evaluated using Kruskal–Wallis test with Dunn's post-  
598 hoc test. f, Analysis of plasma levels of positive subjects ( $\text{IgG} \geq 12$ ) in relation to a combination of  
599 symptoms,  $p = 0.0004$ . Odds ratio (OR) calculated with logistic analysis for ordinal data.

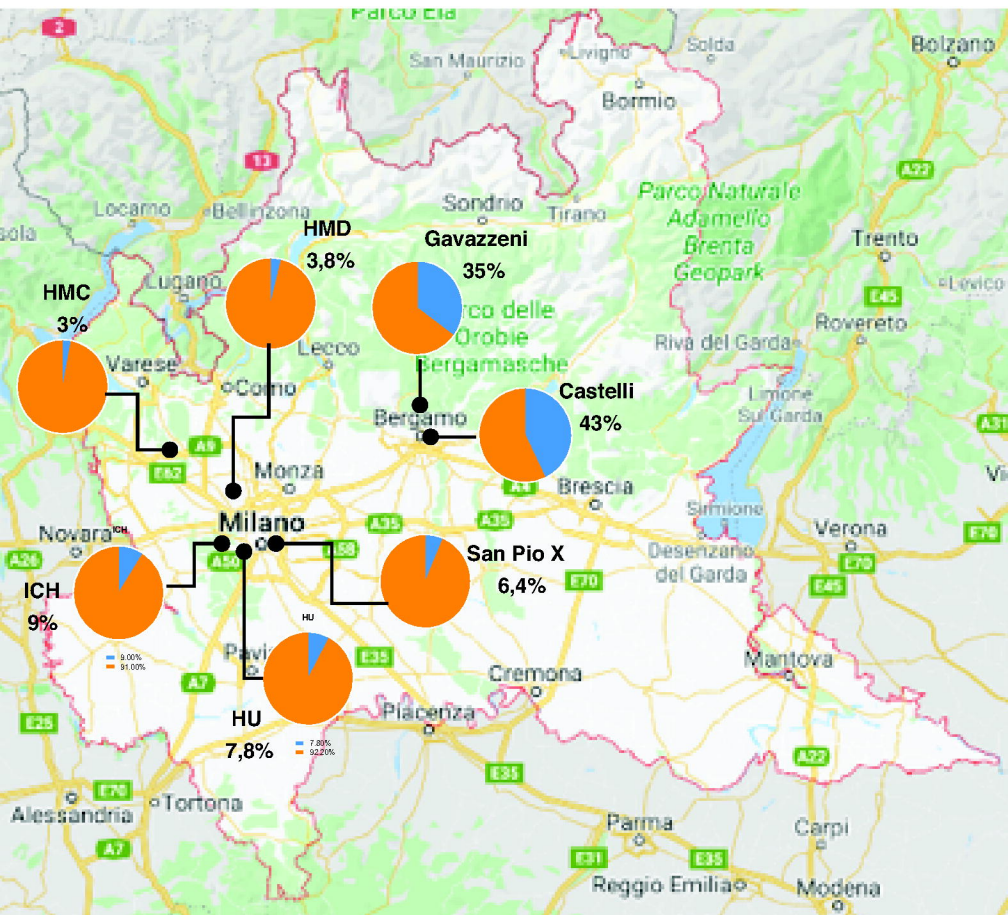


Figure 1

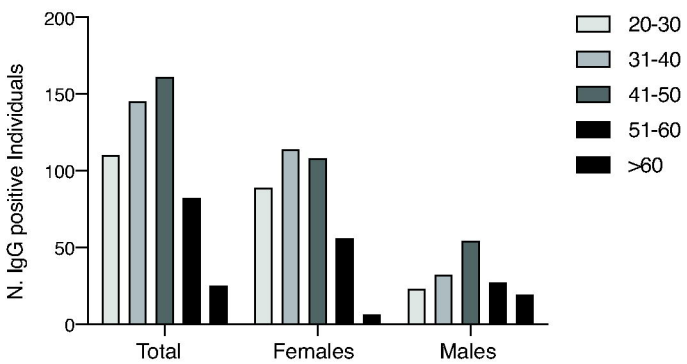
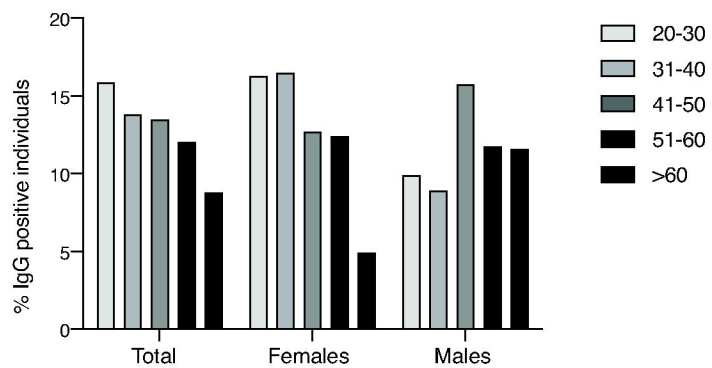
**a****N. IgG  $\geq$  12 by Age****b****% IgG  $\geq$  12 by Age**

Figure 2

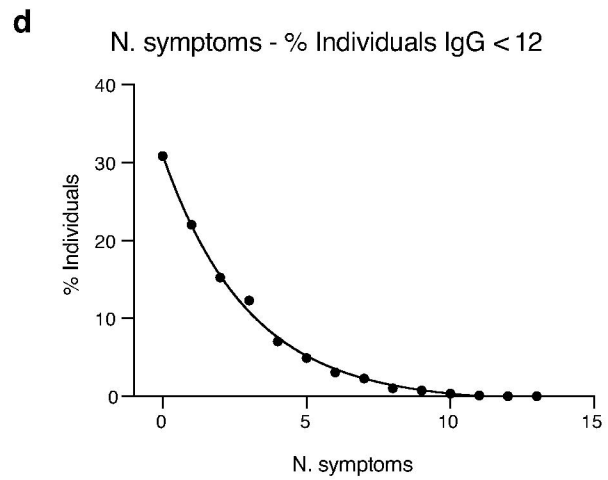
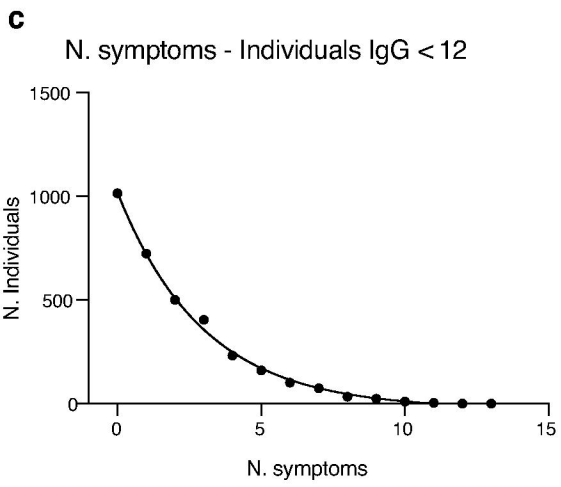
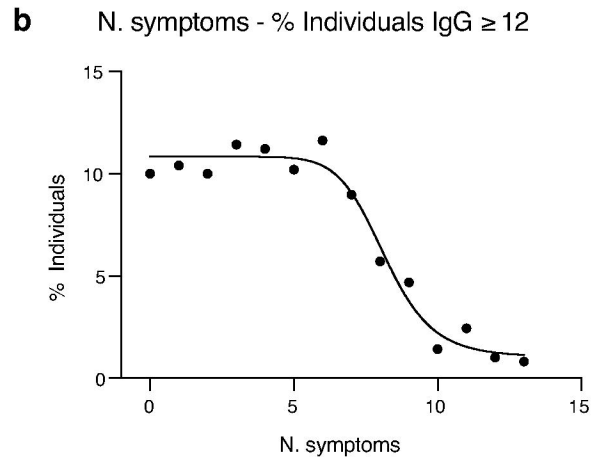
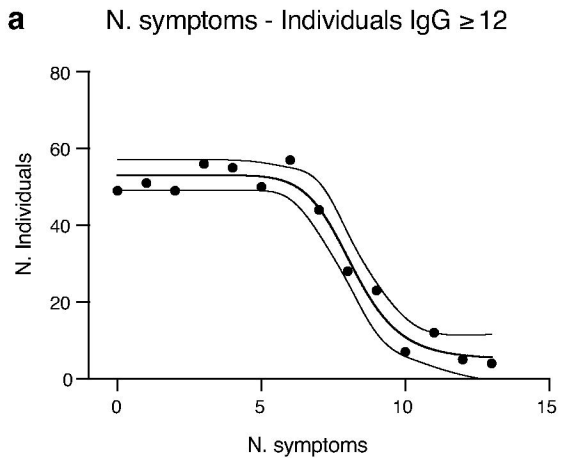
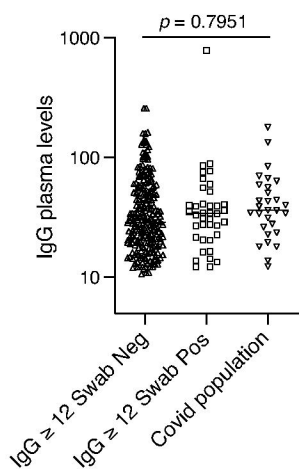


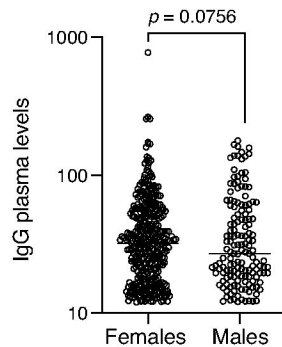
Figure 3



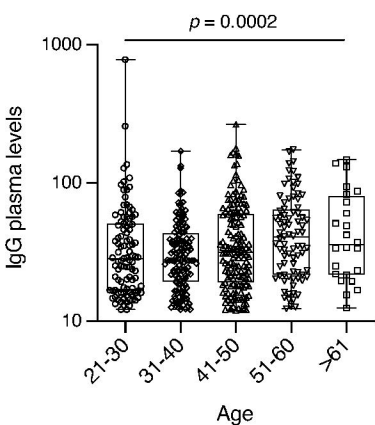
**a** IgG positivity or negativity to rinopharyngeal swab



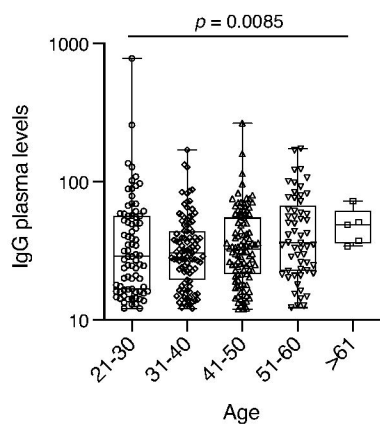
**b** IgG all males vs females



**c** IgG levels by age IgG  $\geq$  12



IgG levels by age Females IgG  $\geq$  12



IgG levels by age Males IgG  $\geq$  12

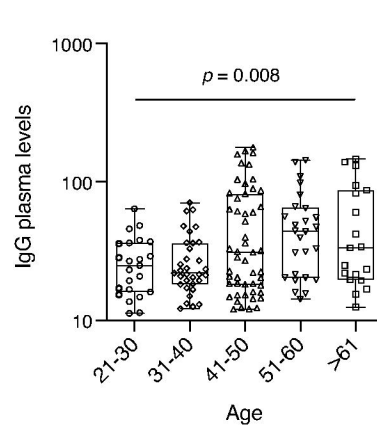


Figure 4

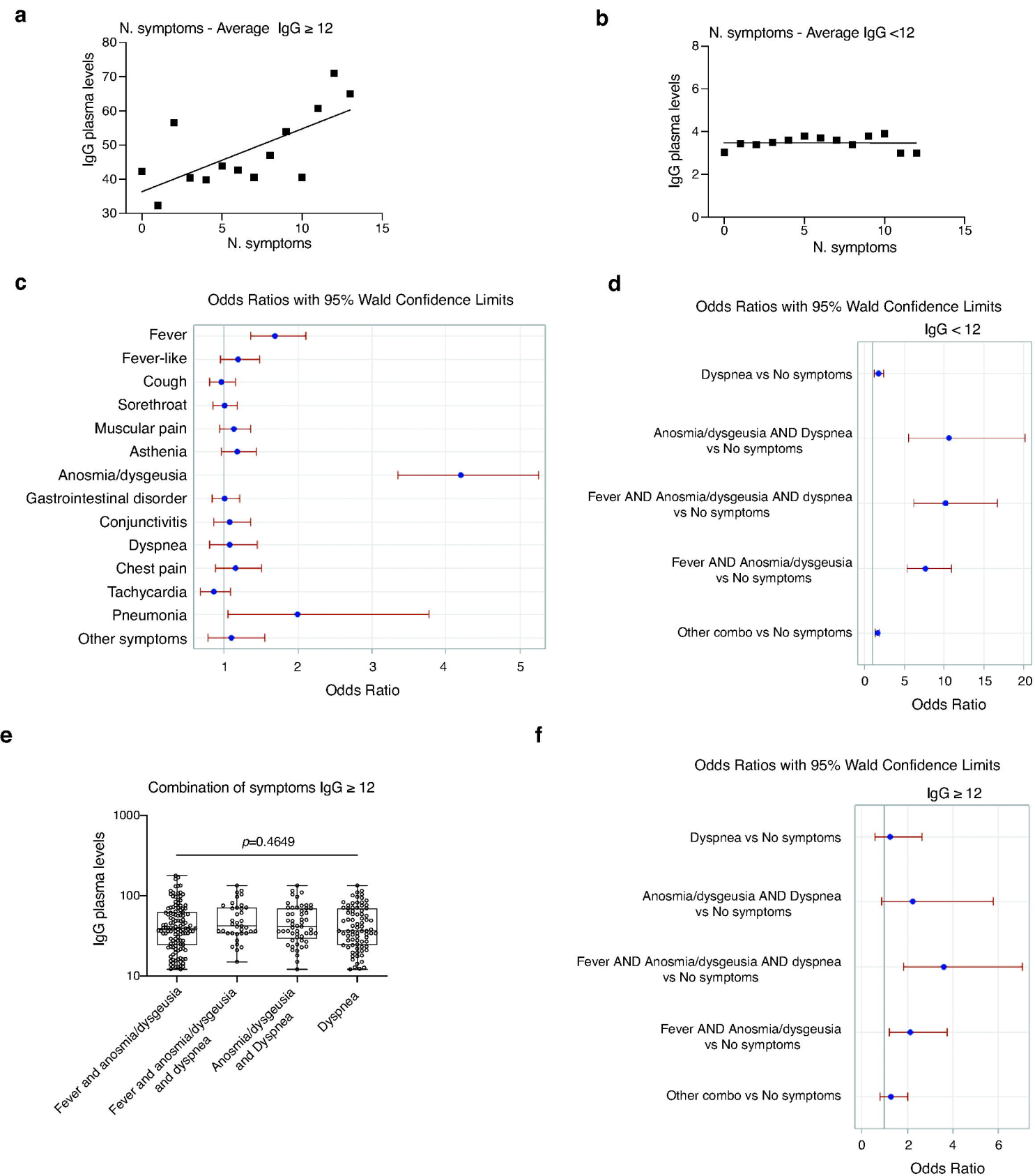


Figure 5