

# Comorbid chronic pain and depression: Shared risk factors and differential antidepressant effectiveness

William H. Roughan<sup>1,2,\*</sup>, Adrián I. Campos<sup>1,2,\*</sup>, Luis M. García-Marín<sup>1,2</sup>, Gabriel Cuéllar-Partida<sup>2,3,\*\*</sup>, Michelle K. Lupton<sup>1</sup>, Ian B. Hickie<sup>4</sup>, Sarah E. Medland<sup>1</sup>, Naomi R. Wray<sup>5,6</sup>, Enda M. Byrne<sup>5</sup>, Trung Thanh Ngo<sup>2,3</sup>, Nicholas G. Martin<sup>1</sup> and Miguel E. Rentería<sup>1,2</sup>

1. Department of Genetics and Computational Biology, QIMR Berghofer Medical Research Institute, Brisbane QLD Australia
2. Faculty of Medicine, The University of Queensland, Brisbane QLD Australia
3. UQ Diamantina Institute, The University of Queensland and Translational Research Institute, Brisbane QLD Australia
4. Brain and Mind Centre, University of Sydney, Camperdown NSW Australia
5. Institute for Molecular Bioscience, The University of Queensland, Brisbane, QLD Australia
6. Queensland Brain Institute, The University of Queensland, Brisbane QLD Australia

\* These authors contributed equally to this work.

☒ These authors jointly directed this study.

\*\*Current address: 23andMe Inc, Sunnyvale, CA, USA.

**Correspondence:** Miguel E. Rentería ([miguel.renteria@qimrberghofer.edu.au](mailto:miguel.renteria@qimrberghofer.edu.au)) and Nicholas G. Martin ([nick.martin@qimrberghofer.edu.au](mailto:nick.martin@qimrberghofer.edu.au))

## ABSTRACT

The bidirectional relationship between depression and chronic pain is well recognized, but their clinical management remains challenging. Here we characterize the shared risk factors and outcomes for their comorbidity in the Australian Genetics of Depression cohort study (N=13,839). Participants completed online questionnaires about chronic pain, psychiatric symptoms, comorbidities, treatment response and general health. Logistic regression models were used to examine the relationship between chronic pain and clinical and demographic factors. Cumulative linked logistic regressions assessed the effect of chronic pain on treatment response for ten different antidepressants. Chronic pain was associated with an increased risk of depression (OR=1.86 [1.37–2.54]), recent suicide attempt (OR=1.88[1.14–3.09]), higher use of tobacco (OR=1.05 [1.02–1.09]) and misuse of painkillers (e.g., opioids; OR=1.31 [1.06–1.62]). Participants with comorbid chronic pain and depression reported fewer functional benefits from antidepressant use and lower benefits from sertraline (OR=0.75[0.68–0.83]), escitalopram (OR=0.75[0.67–0.85]) and venlafaxine (OR=0.78[0.68–0.88]) when compared to participants without chronic pain. Furthermore, participants taking sertraline (OR=0.45[0.30–0.67]), escitalopram (OR=0.45[0.27–0.74]) and citalopram (OR=0.32[0.15–0.67]) specifically for chronic pain (among other indications) reported lower benefits compared to other participants taking these same medications but not for chronic pain. These findings reveal novel insights into the complex relationship between chronic pain and depression. Treatment response analyses indicate differential effectiveness between particular antidepressants and poorer functional outcomes for these comorbid conditions. Further examination is warranted in targeted interventional clinical trials, which also include neuroimaging genetics and pharmacogenomics protocols. This work will advance the delineation of disease risk indicators and novel aetiological pathways for therapeutic intervention in comorbid pain and depression as well as other psychiatric comorbidities.

## INTRODUCTION

Depression is estimated to affect over 264 million people worldwide and is a leading cause of global disability.<sup>1</sup> Its clinical manifestations and outcomes are highly heterogeneous, with multiple factors underlying susceptibility, progression and treatment response.<sup>2</sup> One key factor that frequently complicates the diagnosis of depression is comorbid chronic pain, as patients presenting with pain are more likely to be investigated medically rather than as part of a broader biopsychosocial framework.<sup>3</sup> Depression and chronic pain frequently coexist, with up to 60% of chronic pain patients also presenting with depression.<sup>4,5</sup> Furthermore, the combination of chronic pain and depression leads to poorer treatment outcomes and overall functioning than either condition alone.<sup>6</sup> This problem is underlined by depression and chronic pain being among the top three leading causes of global disability over the past three decades.<sup>1</sup>

Chronic pain has been defined by the International Association for the Study of Pain (IASP) as pain persisting or recurring for longer than three months.<sup>7,8</sup> In contrast to acute pain, which alerts individuals to potential or real tissue damage, chronic pain serves no apparent physiological purpose and persists beyond normal healing time.<sup>7</sup> In Australia (2015–2016), the disease group with the highest expenditure was musculoskeletal disorders.<sup>9</sup> In 2016, more than 1.5 million people over the age of 45 had chronic pain<sup>10</sup> and nearly half of adult patients referred to a pain specialist have comorbid anxiety or depression.<sup>11</sup> In 2018 the cost to the Australian economy was around \$139 billion, mostly due to lost productivity and impaired quality of life<sup>10</sup> with predictions it will almost triple by 2050.<sup>12</sup> In the United States, chronic pain is already costing well over \$500 billion per year.<sup>13,14</sup>

The relationship between chronic pain and depression is bidirectional, as having either disorder increases the risk of developing the other condition<sup>15–19</sup> and pain, in particular, is strongly associated with depression onset and relapse.<sup>20–26</sup> Furthermore, the relationship is dose-dependent with more severe pain being associated with greater severity of depression.<sup>23,27–31</sup> That is especially true for older age populations which report the highest prevalence (13%)<sup>15</sup> of comorbid chronic pain and depression out of all age groups.<sup>3,32–34</sup> However, the evidence for comorbid psychiatric disorders predicting pain intensity and worse outcomes is much weaker.<sup>18,35</sup> Nevertheless, recent large-scale human genetic studies,<sup>36–52</sup> animal models<sup>53–56</sup> and neuroimaging in antidepressant treatment trials<sup>57–59</sup> have made essential inroads towards delineating the causal mechanisms between chronic pain and depression.

Serotonin noradrenaline reuptake inhibitors (SNRIs; e.g., duloxetine) and selective serotonin reuptake inhibitors (SSRIs; e.g., paroxetine, sertraline) are commonly used antidepressants for the treatment of comorbid chronic pain and depression.<sup>60</sup> Other antidepressant options include tricyclic antidepressants (TCAs) such as amitriptyline.<sup>61,62</sup> While these medications have been found to reduce the symptoms of both depression and pain partially, no significant differences in efficacy between them have been established so far,<sup>63</sup> thus further research is required.<sup>60,64</sup> For example, the efficacy of TCAs against other antidepressants for the treatment of comorbid chronic pain and depression remains unclear due to a lack of rigorous studies.<sup>65–67</sup>

Despite the high prevalence and cost of comorbid chronic pain and depression,<sup>1,4,5,15–17,19,68–70</sup> research efforts have yet to deliver clinically useful findings and recommendations specifically for this comorbid indication.<sup>67,71,72</sup> For example, a recent review highlighted that it was unclear which specific antidepressant should be prescribed as the first-line treatment for comorbid chronic pain and depression,<sup>60</sup> while others have recommended non-opioid medications as first-line therapy for chronic neuropathic pain.<sup>73,74</sup> To address this issue, pharmacoepidemiological studies — which examine the use and effect of medications in large population cohorts — have been proposed as a cost-effective method for reviewing pharmaceutical safety and effectiveness, as well as helping to inform clinical guideline development.<sup>75</sup>

In the current study, we examined the pharmacoepidemiology of comorbid chronic pain and depression in the Australian Genetics of Depression Study (AGDS) — one of the world’s largest participant cohorts with a detailed history of depression and its comorbidities.<sup>76</sup> Here, we sought to: **(i)** quantify the association between depression and chronic pain; **(ii)** assess the dependency between chronic pain severity, depression severity and recent suicidality; **(iii)** identify other psychiatric disorders and patterns of recent substance use associated with comorbid chronic pain and depression; and **(iv)** assess whether comorbid chronic pain and depression is associated with differential antidepressant effectiveness.

## METHODS

**Participants.** This study comprised data from two cohorts: AGDS and the Prospective Imaging Study of Aging (PISA). Participants in both groups provided informed consent before participating. These studies, including all questionnaires used, were approved by QIMR Berghofer Medical Research Institute’s Human Research Ethics Committee.

**AGDS cohort.** 20,689 participants from across Australia were recruited through an open media campaign and targeted mailout. The publicity campaign, from which 86% of participants were recruited, including both conventional and online social media. The campaign appealed for anyone who “*had been treated by a doctor, psychiatrist or psychologist for depression*” to visit this website — <https://www.geneticsofdepression.org.au>. For the targeted mailout, invitation letters were sent by the Australian Government Department of Human Services (DHS) to individuals who, according to their records, had received at least four prescriptions for any of the ten most commonly used antidepressants in the last 4.5 years. DHS did not, at any time, share any personal information with the research team. Potential participants were directed to the above website, which contained information about the study, a registration and consent form, and a comprehensive online questionnaire. The essential inclusion criteria included having been prescribed and taken antidepressants and providing consent to donate a saliva sample for subsequent genotyping. No participant was excluded based on comorbid conditions. The online survey assessed mental health diagnoses, antidepressant response, suicidality, general health and substance use, among several other variables. A detailed baseline description of the cohort has

been published elsewhere.<sup>76</sup> The full list and details of instruments used for AGDS phenotyping are available at:

<https://bmjopen.bmj.com/content/bmjopen/10/5/e032580/DC2/embed/inline-supplementary-material-2.pdf>

**PISA cohort.** The Prospective Imaging Study of Ageing (PISA) is a longitudinal cohort of Australian adults.<sup>77</sup> The population-based sample recruitment pool comprised adult twins, their spouses, and first-degree relatives of twins and spouses who over previous decades, had volunteered for studies on risk factors or biomarkers for physical or psychiatric conditions and had previously been genome-wide genotyped.<sup>78,79</sup> The PISA protocol consisted of online questionnaires, including a history of mental health diagnoses and the same pain questionnaire in AGDS. It was completed by N=2,469 PISA participants. For that reason, AGDS and PISA data were used in the present study to assess the effect of depression and demographics (e.g., age, sex) on chronic pain. All other analyses described in this manuscript were performed only in the AGDS cohort.

**Depression and chronic pain ascertainment.** AGDS participants were asked to self-report whether they had ever been diagnosed with depression by a health professional, and similarly for 19 other psychiatric conditions. Individuals were classified as depression cases if they had reported both a depression diagnosis and had been prescribed antidepressants in the past five years (N=17,849). Of these, 92% fulfilled the DSM-5 diagnostic criteria for a lifetime depressive episode based on detailed descriptions of this cohort.<sup>76</sup> Importantly, this figure is within the test-retest reliability estimates of depression ascertainment from DSM-5 based instruments.<sup>80,81</sup> Participants were administered a pain severity numerical rating scale.<sup>82</sup> Briefly, patients were asked to indicate whether they experienced chronic pain in their daily life and to rank its intensity on a scale from 0–10. Only those reporting a pain rating >0 progressed to the remainder of the pain module, which included questions about the duration and location of their primary pain. Following the IASP guidelines, chronic pain was defined as pain persisting or recurring for at least three months.<sup>7,8</sup> Cases were classified as having comorbid chronic pain and depression if they fulfilled the criteria for both conditions (N=6,895), and *controls* were classified as those who reported depression but no chronic pain (N=4,475). We performed a complete case analysis. Thus, participants with missing data for chronic pain (i.e., those who did not complete the section; N=6,463) were excluded from analyses that needed data for both chronic pain and depression.

**Recent suicidality and substance use.** Suicidality was assessed using the SIDAS instrument.<sup>83</sup> Briefly, suicidal ideation over the last month was measured on a 10-point scale: 0 indicated having no suicidal ideation in the past month (never), and 10 denoted persistent suicidal ideation. Participants with a score >0 were classified as positive cases for suicidal ideation. Suicide attempt was measured using a similar 10-point scale in regard to how close a participant had come to making an attempt. Only those with a score of 10 (labeled as "*I have made an attempt*") were considered cases for a suicide attempt. Participants also reported their frequency in using a range of substances over the last three months. Alcohol consumption frequency was measured as the number of days the participant drank three or more standard drinks. For all other substances, the response options were: "*never*" (0), "*once or twice*" (1), "*monthly*" (2), "*weekly*" (3) or "*daily*" (4).

These responses were modeled as continuous variables when assessing their correlation with chronic pain.

**Antidepressant use and response.** Participants were asked whether they had ever been prescribed any of the ten most commonly used antidepressants in Australia for any indication. These are sertraline, escitalopram, venlafaxine, amitriptyline, mirtazapine, desvenlafaxine, citalopram, fluoxetine, duloxetine and paroxetine. Information regarding the reason(s) for prescription was collected using a checklist of 17 possible responses, including depression, chronic pain, and anxiety (among others). Multiple selections were possible. Participants were asked to report on the best aspects of taking antidepressants using the following item: *“What were the best aspects of taking the antidepressant(s)? Include any antidepressant you have taken.”* Participants were then able to select all that apply out of a list including relief of depressive symptoms, relief of other symptoms, e.g., sleep disturbance, reduction in suicidal ideation, return of normal emotion, improved relationships, returning to normal activities and restored control over mood. Moreover, participants rated the effectiveness of each antidepressant they had taken, using a scale ranging from 0 (e.g., *“sertraline works not at all well for me”*) to 2 (e.g., *“sertraline works very well for me”*). Two analyses were performed: (i) first, antidepressant effectiveness was compared between participants who reported taking an antidepressant prescribed for chronic pain against the rest of the participants (i.e., not prescribed for chronic pain); and (ii) we compared antidepressant effectiveness between participants reporting chronic pain and those reporting no chronic pain (regardless of explicit indication).

**Statistical analyses.** In this study, we used complete case analysis and thus removed participants who did not have the required data from specific analyses. The relationship between chronic pain and several other variables of interest was assessed using multivariable logistic regression. This approach enabled us to quantify the associations while adjusting for age, sex and all other relevant factors (e.g., the correlation between alcohol and chronic pain while keeping usage of all other substances equal). Fully adjusted odds ratios were calculated from effect sizes on the logit scale, and p-values were estimated using Wald-tests. For all analyses, the presence of chronic pain was modeled as a binary variable, while chronic pain severity was modeled as a quantitative score from zero to 10. The relationship between chronic pain and antidepressant effectiveness was examined using *cumulative link logistic regressions* to accurately model treatment response, which was coded on an ordinal scale. Furthermore, to assess the effect of chronic pain across all antidepressants, a random effect was included to account for repeated responses from participants. This analysis was performed in R using the ordinal package and the *clm* and *clmm* functions, adjusting for the effects of sex and age when antidepressant treatment started. All other statistical analyses were performed and figures generated in *python* using these modules: *statsmodels*, *scipy*, *numpy*, *pandas*, *matplotlib* and *seaborn*.

## RESULTS

### *Sample demographics and association between chronic pain and depression*

Demographics and chronic pain prevalence for both AGDS (enriched for depression) and PISA (not enriched for depression) cohorts are shown in **Table 1, Supplementary Figures 1 and 2. Figure 1** shows the prevalence of chronic pain by age, stratified by cohort. A significant cohort effect is evident. Nonetheless, this cohort effect may be attributable (at least in part) to other differences such as age, sex and education rather than depression. Chronic pain is positively associated with age but despite the PISA cohort being older on average (**Supplementary Figure 1**), the AGDS cohort showed a higher prevalence of chronic pain. After adjusting for all the relevant factors, the cohort effect was found to be partly attributable to depression status (OR= 1.86 [1.37–2.54]) because residual cohort effects were non-significant after accounting for the effect of depression (Cohort<sub>AGDS</sub> OR=1.32 [0.97–1.79]). Furthermore, a higher age (OR= 1.02 [1.02–1.03]), lower educational attainment (OR=0.89 [0.86–0.91]), and being female (OR= 1.16 [1.07–1.25]) were associated with chronic pain in the pooled PISA and AGDS sample (**Supplementary Table 1**).

### ***Chronic pain is associated with severity of depression and recent suicidality***

Results presented here are from AGDS where all participants reported depression. Higher pain severity (intensity) was found to be associated with longer durations of pain (**Supplementary Figure 3**). Increased pain severity was also associated with an increased number of depressive episodes (**Supplementary Figure 4**). The prevalence of suicidal ideation was higher in the comorbid chronic pain group (OR=1.49 [1.38–1.61]). Likewise, recent suicide attempt was associated with chronic pain (OR=1.88 [1.14–3.09]). Within the chronic pain group, recent suicidal thoughts and suicide attempt scores were also positively correlated with chronic pain severity scores (**Supplementary Figure 4**).

### ***Comorbid psychiatric diagnoses and recent substance use***

In this subsection, the results presented are from AGDS where all participants reported depression. Out of the nineteen mental health conditions examined, social anxiety disorder was found to have the strongest association with chronic pain ( $p < 0.01$ ), however, this association did not survive multiple-testing correction. Anorexia nervosa was found to be negatively associated with the likelihood of developing chronic pain ( $p < 0.05$ ). Although both of these results were nominally significant, no association survived correction for multiple testing (**Figure 2; Supplementary Table 2**). Notably, chronic pain was significantly associated with decreased use of alcohol, increased use of tobacco, and painkiller misuse (e.g., opioids). Nominal associations were observed for other drugs such as cocaine (negative relationship) and opioids (**Figure 2; Supplementary Table 3**).

### ***Chronic pain and antidepressant response***

In this subsection, the results presented are from AGDS, where all participants reported depression. The three most commonly prescribed antidepressants for the indication of chronic pain — over and above depression — were amitriptyline (N=606), duloxetine (N=288) and sertraline (N=160; **Supplementary Figure 5**). Overall, the overwhelming majority of participants with chronic pain (i.e., 75%–98% across all antidepressants) reported that their antidepressant prescription did not consider chronic pain. Furthermore, participants with chronic pain predominantly reported taking antidepressants for depression (i.e., more than 90% of participants

reported their prescription was for depression). The exception was amitriptyline, for which only 60% of participants with chronic pain reported the prescription was for depression (**Supplementary Table 4**). Compared to participants without chronic pain, those with comorbid chronic pain were less likely to report positive functional benefits from taking antidepressants such as '*relief of depressive symptoms*', '*return of normal emotions*' and '*getting back to normal daily activities*' (**Figure 3a**). A trend was noted — whereby participants with chronic pain were more likely to report a *reduction in suicidal symptoms* as a positive aspect of antidepressant treatment — but this finding did not survive correction for multiple testing (**Supplementary Table 5**). Furthermore, in the chronic pain group, the average self-reported benefits from taking antidepressants were significantly lower compared to the group without chronic pain (OR=0.75 [0.71–0.80];  $p < 2 \times 10^{-16}$ ). A similar but non-significant finding was observed between the average response of participants prescribed antidepressants for chronic pain versus those without a chronic pain indication (OR=0.94 [0.80–1.1]; **Supplementary Figure 6**). Next, we examined whether these findings held true for each antidepressant under investigation. For most antidepressants, no statistically significant difference in effectiveness was found between participants with chronic pain (or an indication for chronic pain) and participants without chronic pain. Participants with chronic pain who had taken sertraline, escitalopram or venlafaxine, reported significantly lower effectiveness than participants without chronic pain (**Figure 3b**). At this point, it remained unclear whether the antidepressant was taken before or after the commencement of chronic pain. To address this question, we performed a secondary analysis defining cases as participants who reported taking an antidepressant where the prescription explicitly considered chronic pain. This analysis revealed lower effectiveness for sertraline, escitalopram and citalopram (**Figure 3c**). The only antidepressants with a positive effect (i.e., greater effectiveness) were duloxetine, venlafaxine and amitriptyline, but only when prescribed for comorbid chronic pain and depression. However, none of these positive associations reached statistical significance (**Figure 3b**; **Supplementary Table 6**; **Supplementary Table 7**).

## DISCUSSION

We have reported the largest study to date on comorbid chronic pain and depression assessing the risk factors and treatment outcomes through comprehensive phenotyping of a depression-enriched sample. A key finding is that participants with comorbid chronic pain and depression reported significantly lower benefits from taking particular SSRI and SNRI antidepressants (i.e., sertraline, escitalopram, venlafaxine) compared to participants with depression but no chronic pain. Participants with comorbid chronic pain and depression also reported fewer functional benefits from taking antidepressants compared to those without chronic pain. For example, participants with comorbid chronic pain and depression treated with antidepressants were 22% less likely to report relief of depressive symptoms and 18% less likely to get back to normal daily activities compared to depression patients without comorbid chronic pain. The fewer functional benefits reported from antidepressants in those with comorbid chronic pain is consistent with prior research showing that pain is a strong predictor of non-remission with antidepressant medication treatment.<sup>84,85</sup>

We also found that participants prescribed particular SSRI antidepressants (i.e., sertraline, escitalopram, citalopram) for chronic pain reported significantly lower benefits (e.g., 55% lower odds of response from sertraline) compared to those taking the same medications but for a different indication. These results suggest that while SSRI and SNRI antidepressant classes may be equally effective in the treatment of comorbid chronic pain and depression,<sup>63,86</sup> specific antidepressants have differential effectiveness depending on certain common disease modifiers such as chronic pain. The lower effectiveness of sertraline is particularly important, as it is commonly used for the treatment of comorbid chronic pain and depression.<sup>60</sup> Here we have shown evidence for differential effectiveness between several specific antidepressants in comorbid chronic pain and depression. We consider these findings to be robust because our methodological approach took into account the inherent clinical heterogeneity, high comorbidity and wide individual variation commonly observed in psychiatric disorders.

The current study's main findings of differential antidepressant effectiveness and fewer functional benefits from antidepressant use in comorbid chronic pain and depression are further underlined by demonstrating several results consistent with previous research. These include: **(i)** a strong association between depression and chronic pain;<sup>87,88</sup> **(ii)** increasing severity of chronic pain was associated with a higher number of depressive episodes experienced by participants;<sup>23</sup> and **(iii)** older age, lower educational attainment and female sex were associated with higher chronic pain prevalence.<sup>3,32–34,89–91</sup>

In the current study, amitriptyline was found to be the most commonly prescribed antidepressant to individuals with comorbid chronic pain. Indeed, it was prescribed over two times more than the next most commonly prescribed medication — duloxetine. Moreover, amitriptyline was the medication with, by far, the lowest indication for depression followed by duloxetine. Amitriptyline has traditionally been the first-line treatment for chronic neuropathic pain<sup>61</sup>, however, its side-effect profile and mortality risk in overdose often limit its use.<sup>67</sup> Our results are consistent with these medications being effective at treating chronic pain. In the current study, when the antidepressant prescription was for chronic pain — amitriptyline, duloxetine and venlafaxine showed a positive association with treatment effectiveness. This effect did not survive multiple-testing correction, which may be explained by the reduced power from further stratifying the sample. Our findings highlight the inadequate treatment recommendations for comorbid chronic pain and depression, as most participants with chronic pain did not report their antidepressant prescriptions were for chronic pain. The current study thus reaffirms the critical unmet need in this patient population.

While there have been conflicting reports regarding the link between chronic pain severity and suicidal behaviours,<sup>92–97</sup> we provide evidence that supports an association between comorbid chronic pain and depression with both an increased risk for suicidal ideation and suicide attempt. Given suicide is a leading cause of death — particularly for young people<sup>98</sup> — and that depression and chronic pain are both treatable conditions, assessing their comorbidity in both at-risk youth and older adult populations may help to reduce suicide rates.<sup>99–102</sup>



Consistent with previous observations,<sup>88</sup> we also found comorbid chronic pain and depression was associated with recent increased use of tobacco and painkillers (e.g., opioids). However, we did not observe a significant association between comorbid chronic pain and depression with a self-reported substance use disorder. Previous reports suggest chronic pain, depression and substance use disorder are often comorbid.<sup>103</sup> It is possible that screening and diagnosis of substance use disorders in Australia may be lacking in those with comorbid chronic pain and depression. As such, clinicians need to consider substance use disorder in patients presenting with this comorbidity, as all three conditions increase the risk for other chronic diseases such as cardiovascular disease and cancer, while also increasing the risk of premature death.<sup>71</sup>

### **Strengths, Limitations & Further Research**

The current study is the largest to date examining the relationship between depression and chronic pain with a novel pharmacoepidemiological approach that has yielded new insights into the medical treatment of these highly morbid conditions. However, there are also a number of limitations to be acknowledged. Data were primarily drawn from AGDS, which is a multi-aim study investigating the risk factors for depression and treatment response to antidepressants. As the AGDS employed phenotyping across an extensive range of complex traits<sup>104</sup>, on balance it was not feasible to also collect detailed information from participants on dosages and (polypharmacy) combinations taken of the prescribed antidepressants<sup>105</sup>; the duration and magnitude of benefits (e.g., for cost-effectiveness analyses)<sup>66,106,107</sup>; drug tolerability and adverse events<sup>66,108–113</sup>; adjunct psychological therapies and multidisciplinary treatment/rehabilitation programs;<sup>114</sup> other prescribed pain pharmacotherapies and questionnaires.<sup>115–119</sup> Further pharmacoepidemiological studies focusing on chronic pain and a large range of psychiatric comorbidities<sup>51,52,120</sup> can directly address and collect data on these specific issues. As the current data were based on self-reported responses, they may also be subject to a degree of participant recall bias (e.g., time-specific details). For example, the substance use and suicidality phenotypes may be subject to non-disclosure effects due to the potential stigma associated with these conditions and the antidepressant response data may include non-specific (placebo/nocebo) effects.<sup>59,121</sup> However, these effects would be present across all antidepressants and thus alone are highly unlikely to explain the observed differences between the chronic pain (cases) and control participants. Randomized interventional studies comparing treatments for participants with comorbid chronic pain and depression are required to validate our results and elucidate the causal direction of associations reported here. Genetic-based methods can also aid in further examination of our findings by performing discovery genome-wide association studies (GWAS) of comorbid chronic pain and depression to determine individuals' polygenic risk irrespective of whether they have developed chronic pain or not. Furthermore, GWAS will enable: **(i)** the elucidation of causality between chronic pain and treatment response by using methods such as Mendelian randomization; and **(ii)** replication in antidepressant treatment-resistant depression cohorts with primary care and genotype data<sup>122</sup>.

## Conclusions

In summary, we found patients with comorbid depression and chronic pain were less likely to derive functional benefits from antidepressants (especially sertraline, escitalopram and venlafaxine) than patients with depression but no chronic pain. Compared to patients with depression but no chronic pain, those with comorbid chronic pain and depression were also more likely to have had a recent suicide attempt, use tobacco and misuse painkillers. To further assess differences in effectiveness between specific antidepressants, targeted interventional trials can directly address the other phenotypes not captured in the current study. Nevertheless, our large-scale data-driven approach — like recent human genetic<sup>36-52</sup> and neuroimaging<sup>57-59</sup> antidepressant treatment studies — have revealed novel insights into the relationship between chronic pain and depression. Along with animal model and human pharmacogenetic studies<sup>53-56,118,119,123-127</sup>, there is also independent converging evidence for the critical role of subcortical brain regions in mediating pain and mood.<sup>128</sup> The application of rigorous statistical genetics methodologies to large-scale neuroimaging data, for example, has already produced several major discoveries, such as advancing our understanding of causal pathways, (subcortical) brain networks and medication response markers in mood disorders.<sup>129-135</sup> Our study suggests pharmacoepidemiological approaches in psychiatry and pain medicine research will be increasingly valuable as a cost-effective, first-line strategy to enhance the design, feasibility and clinical utility of randomized controlled trials<sup>136</sup>, particularly as they routinely exclude patients with specific comorbidities and thus are not representative of the inherent individual variation across the population.<sup>106,109,137</sup> Finally, the current study also has important implications for Australia's mental health system and chronic disease policy reforms, such as addressing problems concerning medication overprescription and effectiveness, their side-effects and suicide prevention.<sup>138-140</sup>

## AUTHOR CONTRIBUTIONS

WHR, AIC, TTN and MER designed this study and wrote the first version of the manuscript. AIC performed the analyses with input from MER, TTN and WHR. NGM, SEM, NRW and IBH designed and directed the AGDS data collection efforts. NGM and MKL led the PISA study data collection efforts. TTN designed the pain module in both the AGDS & PISA online surveys and conceived the genetic & epidemiological investigation of comorbid pain & depression in these cohorts. LMG-M and GC-P contributed to data analyses. All authors contributed to the interpretation of the results and provided feedback on the preliminary versions of the manuscript.

## ROLE OF THE FUNDING SOURCE

The research funders did not participate in the study design, data analyses, results interpretation or writing of the manuscript.

## CONFLICTS OF INTERESTS STATEMENT

IBH has been: Commissioner of Australia's National Mental Health Commission (2012–2018); Co-director of Health and Policy at the Brain and Mind Centre, University of Sydney; leading community-based and pharmaceutical industry-supported projects (Wyeth, Eli Lilly, Servier, Pfizer, AstraZeneca) focused on the identification and better management of anxiety and depression; a member of the Medical Advisory Panel for Medibank Private until October 2017; a board member of Psychosis Australia Trust; a member of the Veterans Mental Health Clinical Reference Group; and Chief Scientific Advisor to and an equity shareholder in Innowell. GC-P contributed to this study while employed at The University of Queensland. He is now an employee of 23andMe Inc and he may hold stock or stock options from the company. The remaining authors have nothing to disclose.

## **ACKNOWLEDGEMENTS**

Data collection for AGDS was possible thanks to funding from the Australian National Health & Medical Research Council (NHMRC) to NGM (GNT1086683). PISA was possible thanks to an NHMRC Dementia Research Team Grant administered by QIMR Berghofer Medical Research Institute (GNT1095227). We thank our colleagues Richard Parker, Simone Cross and Kerrie McAloney for their valuable work coordinating all the administrative and operational aspects of the AGDS and PISA projects. AIC and LMGM are supported by UQ Research Training Scholarships from The University of Queensland (UQ). MER thanks the support of NHMRC and the Australian Research Council (ARC), through an NHMRC-ARC Dementia Research Development Fellowship (GNT1102821). The views expressed are those of the authors and not necessarily those of the affiliated or funding institutions.

## REFERENCES

1. GBD 2017 Disease and Injury Incidence and Prevalence Collaborators. Global, regional, and national incidence, prevalence, and years lived with disability for 354 diseases and injuries for 195 countries and territories, 1990-2017: a systematic analysis for the Global Burden of Disease Study 2017. *Lancet*. 2018;392(10159):1789-1858.
2. Mora C, Zonca V, Riva MA, Cattaneo A. Blood biomarkers and treatment response in major depression. *Expert Rev Mol Diagn*. 2018;18(6):513-529.
3. Jaracz J, Gattner K, Jaracz K, Górna K. Unexplained Painful Physical Symptoms in Patients with Major Depressive Disorder: Prevalence, Pathophysiology and Management. *CNS Drugs*. 2016;30(4):293-304.
4. Hooten WM. Chronic Pain and Mental Health Disorders: Shared Neural Mechanisms, Epidemiology, and Treatment. *Mayo Clin Proc*. 2016;91(7):955-970.
5. Armbrecht E, Shah A, Schepman P, Shah R, Pappadopoulos E, Chambers R, Stephens J, Haider S, McIntyre RS. Economic and humanistic burden associated with noncommunicable diseases among adults with depression and anxiety in the United States. *J Med Econ*. 2020;23(9):1032-1042.
6. Dhanju S, Kennedy SH, Abbey S, Katz J, Weinrib A, Clarke H, Bhat V, Ladha K. The impact of comorbid pain and depression in the United States: results from a nationally representative survey. *Scandinavian Journal of Pain*. 2019;19(2):319-325.
7. Treede R-D, Rief W, Barke A, Aziz Q, Bennett MI, Benoliel R, Cohen M, Evers S, Finnerup NB, First MB, Giamberardino MA, Kaasa S, Korwisi B, Kosek E, Lavand'homme P, Nicholas M, Perrot S, Scholz J, Schug S, Smith BH, Svensson P, Vlaeyen JWS, Wang S-J. Chronic pain as a symptom or a disease: the IASP Classification of Chronic Pain for the International Classification of Diseases (ICD-11). *Pain*. 2019;160(1):19-27.
8. Treede RD, Rief W, Barke A, Aziz Q, Bennett MI, Benoliel R, Cohen M, Evers S, Finnerup NB, First MB, Giamberardino MA, Kaasa S, Kosek E, Lavand'homme P, Nicholas M, Perrot S, Scholz J, Schug S, Smith BH, Svensson P, Vlaeyen JW, Wang SJ. A classification of chronic pain for ICD-11. *Pain*. 2015;156(6):1003-1007.
9. Australian Institute of Health and Welfare. *Health Expenditure Australia 2018-19.*; 2020. <https://www.aihw.gov.au/reports/health-welfare-expenditure/health-expenditure-australia-2018-19/contents/data-visualisation>
10. Australian Institute of Health and Welfare. *Chronic Pain in Australia*. Australian Government; 2020.
11. Tardif H, Blanchard MB, White JM, Bryce MP. Normative data for adults referred for specialist pain management in Australia. Published online 2018. Accessed March 1, 2021. <https://ro.uow.edu.au/ahsri/940>
12. Deloitte Access Economics. *The Cost of Pain in Australia.*; 2019.
13. Gaskin DJ, Richard P, Walburn J. The Economical Impact of Pain. In: Saba L, ed. *Neuroimaging*

- of Pain*. Springer International Publishing; 2017:1-17.
14. Lin SX, Patel K, Younge RG. Opioid Medications Prescribing and the Pain-Depression Dyad in Primary Care: Analysis of 2014–2015 National Ambulatory Medical Care Survey (NAMCS) Data. *The Journal of the American Board of Family Medicine*. 2019;32(4):614-618. doi:10.3122/jabfm.2019.04.180311
  15. Zis P, Daskalaki A, Bountouni I, Sykioti P, Varrassi G, Paladini A. Depression and chronic pain in the elderly: links and management challenges. *Clin Interv Aging*. 2017;12:709-720.
  16. Fishbain DA, Cutler R, Rosomoff HL, Rosomoff RS. Chronic pain-associated depression: antecedent or consequence of chronic pain? A review. *Clin J Pain*. 1997;13(2):116-137.
  17. Viana MC, Lim CCW, Garcia Pereira F, Aguilar-Gaxiola S, Alonso J, Bruffaerts R, de Jonge P, Caldas-de-Almeida JM, O'Neill S, Stein DJ, Al-Hamzawi A, Benjet C, Cardoso G, Florescu S, de Girolamo G, Haro JM, Hu C, Kovess-Masfety V, Levinson D, Piazza M, Posada-Villa J, Rabcszenko D, Kessler RC, Scott KM. Previous Mental Disorders and Subsequent Onset of Chronic Back or Neck Pain: Findings From 19 Countries. *J Pain*. 2018;19(1):99-110.
  18. Bondesson E, Larrosa Pardo F, Stigmar K, Ringqvist Å, Petersson IF, Jöud A, Schelin MEC. Comorbidity between pain and mental illness - Evidence of a bidirectional relationship. *Eur J Pain*. 2018;22(7):1304-1311.
  19. Antioch I, Ilie O-D, Ciobica A, Doroftei B, Fornaro M. Preclinical Considerations about Affective Disorders and Pain: A Broadly Intertwined, yet Often Under-Explored, Relationship Having Major Clinical Implications. *Medicina*. 2020;56(10). doi:10.3390/medicina56100504
  20. Gerrits MM, van Oppen P, Leone SS, van Marwijk HWJ, van der Horst HE, Penninx BW. Pain, not chronic disease, is associated with the recurrence of depressive and anxiety disorders. *BMC Psychiatry*. 2014;14(1). doi:10.1186/1471-244x-14-187
  21. Gerrits MMJG, Marloes M J, van Oppen P, van Marwijk HWJ, Brenda W J, van der Horst HE. Pain and the onset of depressive and anxiety disorders. *Pain*. 2014;155(1):53-59. doi:10.1016/j.pain.2013.09.005
  22. Fava M, Wiltse C, Walker D, Brecht S, Chen A, Perahia D. Predictors of relapse in a study of duloxetine treatment in patients with major depressive disorder. *Journal of Affective Disorders*. 2009;113(3):263-271. doi:10.1016/j.jad.2008.05.023
  23. DeVeugh-Geiss AM, West SL, Miller WC, Sleath B, Gaynes BN, Kroenke K. The adverse effects of comorbid pain on depression outcomes in primary care patients: results from the ARTIST trial. *Pain Med*. 2010;11(5):732-741.
  24. Novick D, Montgomery W, Aguado J, Kadziola Z, Peng X, Brugnoli R, Haro JM. Which somatic symptoms are associated with an unfavorable course in Asian patients with major depressive disorder? *J Affect Disord*. 2013;149(1-3):182-188.
  25. Means-Christensen AJ, Roy-Byrne PP, Sherbourne CD, Craske MG, Stein MB. Relationships among pain, anxiety, and depression in primary care. *Depress Anxiety*. 2008;25(7):593-600.
  26. Rhee TG, Mohamed S, Rosenheck RA. Stages of major depressive disorder and behavioral

- multi-morbidities: Findings from nationally representative epidemiologic study. *J Affect Disord.* 2021;278:443-452.
27. Liu M, McCurry SM, Belza B, Dobra A, Buchanan DT, Vitiello MV, Von Korff M. Effects of Osteoarthritis Pain and Concurrent Insomnia and Depression on Health Care Use in a Primary Care Population of Older Adults. *Arthritis Care Res.* 2019;71(6):748-757.
  28. Sil S, Cohen LL, Dampier C. Psychosocial and Functional Outcomes in Youth With Chronic Sickle Cell Pain. *Clin J Pain.* 2016;32(6):527-533.
  29. de Heer EW, Gerrits MMJG, Beekman ATF, Dekker J, van Marwijk HWJ, de Waal MWM, Spinoven P, Penninx BWJH, van der Feltz-Cornelis CM. The association of depression and anxiety with pain: a study from NESDA. *PLoS One.* 2014;9(10):e106907.
  30. Angst F, Benz T, Lehmann S, Wagner S, Simmen BR, Sandør PS, Gengenbacher M, Angst J. Extended overview of the longitudinal pain-depression association: A comparison of six cohorts treated for specific chronic pain conditions. *J Affect Disord.* 2020;273:508-516.
  31. Reed C, Hong J, Novick D, Lenox-Smith A, Happich M. Health care costs before and after diagnosis of depression in patients with unexplained pain: a retrospective cohort study using the United Kingdom General Practice Research Database. *Clinicoecon Outcomes Res.* 2013;5:37-47.
  32. Fayaz A, Croft P, Langford RM, Donaldson LJ, Jones GT. Prevalence of chronic pain in the UK: a systematic review and meta-analysis of population studies. *BMJ Open.* 2016;6(6):e010364. doi:10.1136/bmjopen-2015-010364
  33. Schaakxs R, Comijs HC, van der Mast RC, Schoevers RA, Beekman ATF, Penninx BWJH. Risk Factors for Depression: Differential Across Age? *Am J Geriatr Psychiatry.* 2017;25(9):966-977.
  34. Case A, Deaton A, Stone AA. Decoding the mystery of American pain reveals a warning for the future. *Proc Natl Acad Sci U S A.* 2020;117(40):24785-24789.
  35. Consultation | Chronic pain: assessment and management | Guidance | NICE. Accessed August 17, 2020. <https://www.nice.org.uk/guidance/indevelopment/gid-ng10069/consultation/html-content-2>
  36. Johnston KJA, Adams MJ, Nicholl BI, Ward J, Strawbridge RJ, Ferguson A, McIntosh AM, Bailey MES, Smith DJ. Genome-wide association study of multisite chronic pain in UK Biobank. *PLoS Genet.* 2019;15(6):e1008164.
  37. Lundberg M, Campos AI, Farrell SF, Wang G, Sterling M, Renteria ME, Ngo TT, Cuellar-Partida G. Genetic, lifestyle and environmental risk factors for chronic pain revealed through GWAS. doi:10.1101/2020.05.26.115568
  38. Shen X, Howard DM, Adams MJ, David Hill W, Clarke T-K, Deary IJ, Whalley HC, McIntosh AM. A phenome-wide association and Mendelian Randomisation study of polygenic risk for depression in UK Biobank. *Nat Commun.* 2020;11(1):1-16.
  39. Sun J, Yan W, Zhang X-N, Lin X, Li H, Gong Y-M, Zhu X-M, Zheng Y-B, Guo X-Y, Ma Y-D, Liu Z-Y, Liu L, Gao J-H, Vitiello MV, Chang S-H, Liu X-G, Lu L. Polygenic evidence and overlapped brain

functional connectivities for the association between chronic pain and sleep disturbance. *Transl Psychiatry*. 2020;10(1):252.

40. Johnston KJA, Ward J, Ray PR, Adams MJ, McIntosh AM, Smith BH, Strawbridge RJ, Price TJ, Smith DJ, Nicholl BI, Others. Sex-Stratified Genome-Wide Association Study of Multisite Chronic Pain in UK Biobank. *medRxiv*. Published online 2020.  
<https://www.medrxiv.org/content/10.1101/2020.06.25.20140087v1.abstract>
41. McLean SA, Ressler K, Koenen KC, Neylan T, Germine L, Jovanovic T, Clifford GD, Zeng D, An X, Linnstaedt S, Beaudoin F, House S, Bollen KA, Musey P, Hendry P, Jones CW, Lewandowski C, Swor R, Datner E, Mohiuddin K, Stevens JS, Storrow A, Kurz MC, McGrath ME, Fermann GJ, Hudak LA, Gentile N, Chang AM, Peak DA, Pascual JL, Seamon MJ, Sergot P, Peacock WF, Diercks D, Sanchez LD, Rathlev N, Domeier R, Haran JP, Pearson C, Murty VP, Insel TR, Dagum P, Onnela J-P, Bruce SE, Gaynes BN, Joormann J, Miller MW, Pietrzak RH, Buysse DJ, Pizzagalli DA, Rauch SL, Harte SE, Young LJ, Barch DM, Lebois LAM, van Rooij SJH, Luna B, Smoller JW, Dougherty RF, Pace TWW, Binder E, Sheridan JF, Elliott JM, Basu A, Fromer M, Parlikar T, Zaslavsky AM, Kessler R. The AURORA Study: a longitudinal, multimodal library of brain biology and function after traumatic stress exposure. *Mol Psychiatry*. 2020;25(2):283-296.
42. Levey DF, Stein MB, Wendt FR, Pathak GA, Zhou H, Aslan M, Quaden R, Harrington KM, Sanacora G, McIntosh AM, Others. GWAS of Depression Phenotypes in the Million Veteran Program and Meta-analysis in More than 1.2 Million Participants Yields 178 Independent Risk Loci. *medRxiv*. Published online 2020.  
<https://www.medrxiv.org/content/10.1101/2020.05.18.20100685v2.abstract>
43. Bortsov AV, Parisien M, Khoury S, Zaykin DV, Martinsen AE, Lie MU, Heuch I, Pain HA-I, Hveem K, Zwart J-A, Others. Genome-wide analysis identifies significant contribution of brain-expressed genes in chronic, but not acute, back pain. *medRxiv*. Published online 2020.  
<https://www.medrxiv.org/content/10.1101/2020.09.04.20187575v1.abstract>
44. Nilufer R, Karina B, Paraskevi C, Rebecca D. Large-scale genome-wide association meta-analysis of endometriosis reveals 13 novel loci and genetically-associated comorbidity with other pain conditions. *BioRxiv*. Published online 2018.  
<https://www.biorxiv.org/content/10.1101/406967v1.abstract>
45. Rahman MS, Winsvold BS, Chavez SOC, Borte S, Tsepilov YA, Shapov SZ, Pain HA-I, Aulchenko Y, Hagen K, Fors EA, Others. Genome-wide association study identifies RNF123 locus as associated with chronic widespread musculoskeletal pain. *medRxiv*. Published online 2020.  
<https://www.medrxiv.org/content/10.1101/2020.11.30.20241000v2>
46. Meng W, Adams MJ, Reel P, Rajendrakumar A, Huang Y, Deary IJ, Palmer CNA, McIntosh AM, Smith BH. Genetic correlations between pain phenotypes and depression and neuroticism. *Eur J Hum Genet*. 2020;28(3):358-366.
47. Meng W, Chan BW, Harris C, Freidin MB, Hebert HL, Adams MJ, Campbell A, Hayward C, Zheng H, Zhang X, Colvin LA, Hales TG, Palmer CNA, Williams FMK, McIntosh A, Smith BH. A genome-wide association study finds genetic variants associated with neck or shoulder pain in UK Biobank. *Hum Mol Genet*. 2020;29(8):1396-1404.
48. Rosoff DB, Smith GD, Lohoff FW. Prescription Opioid Use and Risk for Major Depressive Disorder and Anxiety and Stress-Related Disorders: A Multivariable Mendelian

- Randomization Analysis. *JAMA Psychiatry*. Published online November 11, 2020.  
doi:10.1001/jamapsychiatry.2020.3554
49. Tsepilov YA, Freidin MB, Shadrina AS, Sharapov SZ, Elgaeva EE, van Zundert J, Karssen LC, Suri P, Williams FMK, Aulchenko YS. Analysis of genetically independent phenotypes identifies shared genetic factors associated with chronic musculoskeletal pain conditions. *Commun Biol*. 2020;3(1):329.
  50. Adewuyi EO, Mehta D, Sapkota Y, International Endogene Consortium, 23andMe Research Team, Auta A, Yoshihara K, Nyegaard M, Griffiths LR, Montgomery GW, Chasman DI, Nyholt DR. Genetic analysis of endometriosis and depression identifies shared loci and implicates causal links with gastric mucosa abnormality. *Hum Genet*. 2021;140(3):529-552.
  51. Johnson JS, Cote AC, Dobbyn A, Sloofman LG, Xu J. The Phenome-wide Consequences of Anorexia Nervosa Genes. *medRxiv*. Published online 2021.  
<https://www.medrxiv.org/content/10.1101/2021.02.12.21250941v1.abstract>
  52. Smail MA, Wu X, Henkel ND, Eby HM, Herman JP, McCullumsmith RE, Shukla R. Similarities and dissimilarities between psychiatric cluster disorders. *Mol Psychiatry*. Published online January 27, 2021. doi:10.1038/s41380-021-01030-3
  53. Zhou W, Jin Y, Meng Q, Zhu X, Bai T, Tian Y, Mao Y, Wang L, Xie W, Zhong H, Zhang N, Luo MH, Tao W, Wang H, Li J, Li J, Qiu BS, Zhou JN, Li X, Xu H, Wang K, Zhang X, Liu Y, Richter-Levin G, Xu L, Zhang Z. A neural circuit for comorbid depressive symptoms in chronic pain. *Nat Neurosci*. 2019;22(10):1649-1658.
  54. Kremer M, Becker LJ, Barrot M, Yalcin I. How to study anxiety and depression in rodent models of chronic pain? *Eur J Neurosci*. Published online January 26, 2020.  
doi:10.1111/ejn.14686
  55. Bravo L, Llorca-Torralba M, Suárez-Pereira I, Berrocoso E. Pain in neuropsychiatry: Insights from animal models. *Neurosci Biobehav Rev*. 2020;115:96-115.
  56. Cunha AM, Pereira-Mendes J, Almeida A, Guimarães MR, Leite-Almeida H. Chronic pain impact on rodents' behavioral repertoire. *Neurosci Biobehav Rev*. 2020;119:101-127.
  57. Wang Y, Bernanke J, Peterson BS, McGrath P, Stewart J, Chen Y, Lee S, Wall M, Bastidas V, Hong S, Rutherford BR, Hellerstein DJ, Posner J. The association between antidepressant treatment and brain connectivity in two double-blind, placebo-controlled clinical trials: a treatment mechanism study. *Lancet Psychiatry*. 2019;6(8):667-674.
  58. Sheline YI, Yu M. Linking antidepressant performance with pain network connectivity. *Lancet Psychiatry*. 2019;6(8):635-636.
  59. Brown V, Peciña M. Neuroimaging Studies of Antidepressant Placebo Effects: Challenges and Opportunities. *Front Psychiatry*. 2019;10. doi:10.3389/fpsy.2019.00669
  60. IsHak WW, Wen RY, Naghdechi L, Vanle B, Dang J, Knosp M, Dascal J, Marcia L, Gohar Y, Eskander L, Yadegar J, Hanna S, Sadek A, Aguilar-Hernandez L, Danovitch I, Louy C. Pain and Depression: A Systematic Review. *Harv Rev Psychiatry*. 2018;26(6):352-363.



61. Moore RA, Andrew Moore R, Derry S, Aldington D, Cole P, Wiffen PJ. Amitriptyline for neuropathic pain in adults. *Cochrane Database of Systematic Reviews*. Published online 2015. doi:10.1002/14651858.cd008242.pub3
62. Brueckle M-S, Thomas ET, Seide SE, Pilz M, Gonzalez-Gonzalez AI, Nguyen TS, Harder S, Glasziou PP, Gerlach FM, Muth C. Adverse drug reactions associated with amitriptyline — protocol for a systematic multiple-indication review and meta-analysis. *Systematic Reviews*. 2020;9(1). doi:10.1186/s13643-020-01296-8
63. Gebhardt S, Heinzl-Gutenbrunner M, König U. Pain Relief in Depressive Disorders: A Meta-Analysis of the Effects of Antidepressants. *J Clin Psychopharmacol*. 2016;36(6):658-668.
64. Skånland SS, Cieślak-Pobuda A. Off-label uses of drugs for depression. *Eur J Pharmacol*. 2019;865:172732.
65. Consultation | Chronic pain: assessment and management | Guidance | NICE. Accessed August 17, 2020. <https://www.nice.org.uk/guidance/indevelopment/gid-ng10069/consultation/html-content-2>
66. Caruso R, Ostuzzi G, Turrini G, Ballette F, Recla E, Dall'Olio R, Croce E, Casoni B, Grassi L, Barbui C. Beyond pain: can antidepressants improve depressive symptoms and quality of life in patients with neuropathic pain? A systematic review and meta-analysis. *Pain*. 2019;160(10):2186-2198.
67. Urits I, Peck J, Orhurhu MS, Wolf J, Patel R, Orhurhu V, Kaye AD, Viswanath O. Off-label Antidepressant Use for Treatment and Management of Chronic Pain: Evolving Understanding and Comprehensive Review. *Curr Pain Headache Rep*. 2019;23(9):66.
68. Stubbs B, Vancampfort D, Veronese N, Thompson T, Fornaro M, Schofield P, Solmi M, Mugisha J, Carvalho AF, Koyanagi A. Depression and pain: primary data and meta-analysis among 237 952 people across 47 low- and middle-income countries. *Psychol Med*. 2017;47(16):2906-2917.
69. Vwaire Orhurhu MD, Mayowa Olusunmade MD, Yinka Akinola MD, Ivan Urits MD. Depression Trends in Patients with Chronic Pain: An Analysis of the Nationwide Inpatient Sample. *Pain Physician*. 2019;22:E487-E494.
70. Gold SM, Köhler-Forsberg O, Moss-Morris R, Mehnert A, Miranda JJ, Bullinger M, Steptoe A, Whooley MA, Otte C. Comorbid depression in medical diseases. *Nat Rev Dis Primers*. 2020;6(1):69.
71. Haibach JP, Beehler GP, Dollar KM, Finnell DS. Moving toward integrated behavioral intervention for treating multimorbidity among chronic pain, depression, and substance-use disorders in primary care. *Med Care*. 2014;52(4):322-327.
72. Du L, Luo S, Liu G, Wang H, Zheng L, Zhang Y. The 100 Top-Cited Studies About Pain and Depression. *Front Psychol*. 2019;10:3072.
73. Bates D, Schultheis BC, Hanes MC, Jolly SM, Chakravarthy KV, Deer TR, Levy RM, Hunter CW. A Comprehensive Algorithm for Management of Neuropathic Pain. *Pain Med*. 2019;20(Suppl 1):S2-S12.

74. Moisset X, Bouhassira D, Avez Couturier J, Alchaar H, Conradi S, Delmotte MH, Lanteri-Minet M, Lefaucheur JP, Mick G, Piano V, Pickering G, Piquet E, Regis C, Salvat E, Attal N. Pharmacological and non-pharmacological treatments for neuropathic pain: Systematic review and French recommendations. *Revue Neurologique*. 2020;176(5):325-352. doi:10.1016/j.neurol.2020.01.361
75. Davis KAS, Farooq S, Hayes JF, John A, Lee W, MacCabe JH, McIntosh A, Osborn DPJ, Stewart RJ, Woelbert E. Pharmacoepidemiology research: delivering evidence about drug safety and effectiveness in mental health. *Lancet Psychiatry*. 2020;7(4):363-370.
76. Byrne EM, Kirk KM, Medland SE, McGrath JJ, Parker R, Cross S, Sullivan L, Statham DJ, Levinson DF, Licinio J, Wray NR, Hickie I, Martin N. The Australian Genetics of Depression Study: Study Description and Sample Characteristics. *bioRxiv*. Published online 2019.
77. Lupton MK, Robinson GA, Adam RJ, Rose S, Byrne GJ, Salvado O, McAloney K, Gordon SD, Raniga P, Fazlollahi A, Xia Y, Ceslis A, Sonkusare S, Zhang Q, Kholghi M, Karunanithi M, Mosley PE, Lv J, Adsett J, Garden N, Fripp J, Martin NG, Guo CC, Breakspear M. A prospective cohort study of prodromal Alzheimer's disease: Prospective Imaging Study of Ageing: Genes, Brain and Behaviour (PISA). *medRxiv*. Published online May 8, 2020:2020.05.04.20091140.
78. Benyamin B, Ferreira MAR, Willemsen G, Gordon S, Middelberg RPS, McEvoy BP, Hottenga J-J, Henders AK, Campbell MJ, Wallace L, Frazer IH, Heath AC, de Geus EJC, Nyholt DR, Visscher PM, Penninx BW, Boomsma DI, Martin NG, Montgomery GW, Whitfield JB. Common variants in TMPRSS6 are associated with iron status and erythrocyte volume. *Nat Genet*. 2009;41(11):1173-1175.
79. Heath AC, Whitfield JB, Martin NG, Pergadia ML, Goate AM, Lind PA, McEvoy BP, Schrage AJ, Grant JD, Chou Y-L, Zhu R, Henders AK, Medland SE, Gordon SD, Nelson EC, Agrawal A, Nyholt DR, Bucholz KK, Madden PAF, Montgomery GW. A quantitative-trait genome-wide association study of alcoholism risk in the community: findings and implications. *Biol Psychiatry*. 2011;70(6):513-518.
80. Hoyer J, Voss C, Strehle J, Venz J, Pieper L, Wittchen H-U, Ehrlich S, Beesdo-Baum K. Test-retest reliability of the computer-assisted DIA-X-5 interview for mental disorders. *BMC Psychiatry*. 2020;20(1):280.
81. Shankman SA, Funkhouser CJ, Klein DN, Davila J, Lerner D, Hee D. Reliability and validity of severity dimensions of psychopathology assessed using the Structured Clinical Interview for DSM-5 (SCID). *Int J Methods Psychiatr Res*. 2018;27(1). doi:10.1002/mpr.1590
82. Von Korff M, Ormel J, Keefe FJ, Dworkin SF. Grading the severity of chronic pain. *Pain*. 1992;50(2):133-149.
83. van Spijker BAJ, Batterham PJ, Calear AL, Farrer L, Christensen H, Reynolds J, Kerkhof AJFM. The suicidal ideation attributes scale (SIDAS): Community-based validation study of a new scale for the measurement of suicidal ideation. *Suicide Life Threat Behav*. 2014;44(4):408-419.
84. Fishbain DA, Cole B, Lewis JE, Gao J. Does pain interfere with antidepressant depression treatment response and remission in patients with depression and pain? An evidence-based structured review. *Pain Med*. 2014;15(9):1522-1539.

85. Bair MJ, Robinson RL, Eckert GJ, Stang PE, Croghan TW, Kroenke K. Impact of pain on depression treatment response in primary care. *Psychosom Med*. 2004;66(1):17-22.
86. Thaler KJ, Morgan LC, Van Noord M, Gaynes BN, Hansen RA, Lux LJ, Krebs EE, Lohr KN, Gartlehner G. Comparative effectiveness of second-generation antidepressants for accompanying anxiety, insomnia, and pain in depressed patients: a systematic review. *Depress Anxiety*. 2012;29(6):495-505.
87. Holmes A, Christelis N, Arnold C. Depression and chronic pain. *Med J Aust*. 2013;199(S6):S17-S20.
88. Mills SEE, Nicolson KP, Smith BH. Chronic pain: a review of its epidemiology and associated factors in population-based studies. *Br J Anaesth*. 2019;123(2):e273-e283.
89. Bierman A, Lee Y. Chronic Pain and Psychological Distress Among Older Adults: A National Longitudinal Study. *Res Aging*. 2018;40(5):432-455.
90. Goosby BJ. Early life course pathways of adult depression and chronic pain. *J Health Soc Behav*. 2013;54(1):75-91.
91. Van Hecke O, Torrance N, Smith BH. Chronic pain epidemiology and its clinical relevance. *Br J Anaesth*. 2013;111(1):13-18.
92. Racine M. Chronic pain and suicide risk: A comprehensive review. *Prog Neuropsychopharmacol Biol Psychiatry*. 2018;87(Pt B):269-280.
93. Bailly F, Belaid H. Suicidal ideation and suicide attempt associated with antidepressant and antiepileptic drugs: Implications for treatment of chronic pain. *Joint Bone Spine*. Published online May 11, 2020. doi:10.1016/j.jbspin.2020.04.016
94. Calati R, Laglaoui Bakhiyi C, Artero S, Ilgen M, Courtet P. The impact of physical pain on suicidal thoughts and behaviors: Meta-analyses. *J Psychiatr Res*. 2015;71:16-32.
95. Edwards RR, Smith MT, Kudel I, Haythornthwaite J. Pain-related catastrophizing as a risk factor for suicidal ideation in chronic pain. *Pain*. 2006;126(1-3):272-279.
96. Tang NKY, Beckwith P, Ashworth P. Mental Defeat Is Associated With Suicide Intent in Patients With Chronic Pain. *Clin J Pain*. 2016;32(5):411-419.
97. Breslau N, Schultz L, Lipton R, Peterson E, Welch KMA. Migraine headaches and suicide attempt. *Headache*. 2012;52(5):723-731.
98. Handley T, Rich J, Davies K, Lewin T, Kelly B. The Challenges of Predicting Suicidal Thoughts and Behaviours in a Sample of Rural Australians with Depression. *Int J Environ Res Public Health*. 2018;15(5). doi:10.3390/ijerph15050928
99. Hinze V, Crane C, Ford T, Buivydaite R, Qiu L, Gjelsvik B. The relationship between pain and suicidal vulnerability in adolescence: a systematic review. *Lancet Child Adolesc Health*. 2019;3(12):899-916.
100. Santos J, Martins S, Azevedo LF, Fernandes L. Pain as a risk factor for suicidal behavior in older adults: A systematic review. *Arch Gerontol Geriatr*. 2020;87:104000.

101. Petrosky E, Harpaz R, Fowler KA, Bohm MK, Helmick CG, Yuan K, Betz CJ. Chronic Pain Among Suicide Decedents, 2003 to 2014: Findings From the National Violent Death Reporting System. *Ann Intern Med*. 2018;169(7):448-455.
102. Kirtley OJ, Rodham K, Crane C. Understanding suicidal ideation and behaviour in individuals with chronic pain: a review of the role of novel transdiagnostic psychological factors. *Lancet Psychiatry*. 2020;7(3):282-290.
103. Barrett K, Chang YP. Behavioral Interventions Targeting Chronic Pain, Depression, and Substance Use Disorder in Primary Care. *J Nurs Scholarsh*. 2016;48(4):345-353.
104. Byrne EM, Kirk KM, Medland SE, McGrath JJ, Colodro-Conde L, Parker R, Cross S, Sullivan L, Statham DJ, Levinson DF, Licinio J, Wray NR, Hickie IB, Martin NG. Cohort profile: the Australian genetics of depression study. *BMJ Open*. 2020;10(5):e032580.
105. Scherf-Clavel M, Breisinger S, Fischer M, Deckert J, Unterecker S, Rittner HL. Therapeutic Drug Monitoring of Antidepressants for the Treatment of Chronic Musculoskeletal Pain With and Without Depression. *Ther Drug Monit*. 2020;42(6):893-901.
106. Baune BT, Boyce P, Morris G, Hamilton A, Bassett D, Hopwood M, Mulder R, Parker G, Porter R, Singh AB, Outhred T, Das P, Malhi GS. Organising the front line: Is there a rationale for the first-line pharmacotherapy of major depressive disorder? *Australian & New Zealand Journal of Psychiatry*. 2019;53(4):279-281. doi:10.1177/0004867418824026
107. Pan Y-J, Kuo K-H, Wang S-J. Pharmacological treatment of depression with and without headache disorders: an appraisal of cost effectiveness and cost utility of antidepressants. *J Affect Disord*. 2015;170:255-265.
108. Pradier MF, McCoy TH Jr, Hughes M, Perlis RH, Doshi-Velez F. Predicting treatment dropout after antidepressant initiation. *Transl Psychiatry*. 2020;10(1):60.
109. Kendrick T, Taylor D, Johnson CF. Which first-line antidepressant? *Br J Gen Pract*. 2019;69(680):114-115.
110. Tomlinson A, Efthimiou O, Boaden K, New E, Mather S, Salanti G, Imai H, Ogawa Y, Tajika A, Kishimoto S, Kikuchi S, Chevance A, Furukawa TA, Cipriani A. Side effect profile and comparative tolerability of 21 antidepressants in the acute treatment of major depression in adults: protocol for a network meta-analysis. *Evid Based Ment Health*. 2019;22(2):61-66.
111. Kernot C, Tomlinson A, Chevance A, Cipriani A. One step closer to personalised prescribing of antidepressants: using real-world data together with patients and clinicians' preferences. *Evid Based Ment Health*. 2019;22(3):91-92.
112. Sinyor M, Cheung CP, Abraha HY, Lanctôt KL, Saleem M, Liu CS, Li A, Juda A, Levitt AJ, Cheung AH, Schaffer A. Antidepressant-placebo differences for specific adverse events in major depressive disorder: A systematic review. *J Affect Disord*. 2020;267:185-190.
113. Dragioti E, Solmi M, Favaro A, Fusar-Poli P, Dazzan P, Thompson T, Stubbs B, Firth J, Fornaro M, Tsartalis D, Carvalho AF, Vieta E, McGuire P, Young AH, Shin JI, Correll CU, Evangelou E. Association of Antidepressant Use With Adverse Health Outcomes: A Systematic Umbrella Review. *JAMA Psychiatry*. 2019;76(12):1241-1255.

114. Dragioti E, Evangelou E, Larsson B, Gerdle B. Effectiveness of multidisciplinary programmes for clinical pain conditions: An umbrella review. *J Rehabil Med*. 2018;50(9):779-791.
115. Tardif H, Arnold C, Hayes C, Eagar K. Establishment of the Australasian Electronic Persistent Pain Outcomes Collaboration. *Pain Medicine*. Published online 2016:nw201. doi:10.1093/pm/pnw201
116. Lord SM, Tardif HP, Kepreotes EA, Blanchard M, Eagar K. The Paediatric electronic Persistent Pain Outcomes Collaboration (PaedePPOC). *PAIN*. 2019;160(7):1572-1585. doi:10.1097/j.pain.0000000000001548
117. Nicholas MK, Costa DSJ, Blanchard M, Tardif H, Asghari A, Blyth FM. Normative data for common pain measures in chronic pain clinic populations: closing a gap for clinicians and researchers. *Pain*. 2019;160(5):1156-1165.
118. Yamamoto PA, Conchon Costa AC, Lauretti GR, de Moraes NV. Pharmacogenomics in chronic pain therapy: from disease to treatment and challenges for clinical practice. *Pharmacogenomics*. 2019;20(13):971-982.
119. Kaye AD, Garcia AJ, Hall OM, Jeha GM, Cramer KD, Granier AL, Kallurkar A, Cornett EM, Urman RD. Update on the pharmacogenomics of pain management. *Pharmacogenomics Pers Med*. 2019;12:125-143.
120. Velly AM, Mohit S. Epidemiology of pain and relation to psychiatric disorders. *Prog Neuropsychopharmacol Biol Psychiatry*. 2018;87(Pt B):159-167.
121. Slomski A. "Important Conversations" Are Needed to Explain the Nocebo Effect. *JAMA*. 2021;325(8):707-709.
122. Fabbri C, Hagenaars SP, John C, Williams AT, Shrine N, Moles L, Hanscombe KB, Serretti A, Shepherd DJ, Free RS, Wain LV, Tobin MD, Lewis CM. Genetic and clinical characteristics of treatment-resistant depression using primary care records in two UK cohorts. *medRxiv*. Published online August 26, 2020:2020.08.24.20178715.
123. Maciukiewicz M, Marshe VS, Tiwari AK, Fonseka TM, Freeman N, Kennedy JL, Rotzinger S, Foster JA, Kennedy SH, Müller DJ. Genome-wide association studies of placebo and duloxetine response in major depressive disorder. *Pharmacogenomics J*. 2018;18(3):406-412.
124. Dorfman R, London Z, Metias M, Kabakchiev B, Mukerjee G, Moser A. Individualized Medication Management in Ontario Long-Term Care Clinical Impact on Management of Depression, Pain, and Dementia. *J Am Med Dir Assoc*. 2020;21(6):823-829.e5.
125. Bousman CA, Arandjelovic K, Mancuso SG, Eyre HA, Dunlop BW. Pharmacogenetic tests and depressive symptom remission: a meta-analysis of randomized controlled trials. *Pharmacogenomics*. 2019;20(1):37-47.
126. Milosavljevic F, Bukvic N, Pavlovic Z, Miljevic C, Pešic V, Molden E, Ingelman-Sundberg M, Leucht S, Jukic MM. Association of CYP2C19 and CYP2D6 Poor and Intermediate Metabolizer Status With Antidepressant and Antipsychotic Exposure: A Systematic Review and Meta-analysis. *JAMA Psychiatry*. Published online November 25, 2020. doi:10.1001/jamapsychiatry.2020.3643

127. Bousman CA, Bengesser SA, Aitchison KJ, Amare AT, Aschauer H, Baune BT, Asl BB, Bishop JR, Burmeister M, Chaumette B, Chen L-S, Cordner ZA, Deckert J, Degenhardt F, DeLisi LE, Folkersen L, Kennedy JL, Klein TE, McClay JL, McMahon FJ, Musil R, Saccone NL, Sangkuhl K, Stowe RM, Tan E-C, Tiwari AK, Zai CC, Zai G, Zhang J, Gaedigk A, Müller DJ. Review and Consensus on Pharmacogenomic Testing in Psychiatry. *Pharmacopsychiatry*. Published online November 4, 2020. doi:10.1055/a-1288-1061
128. Kuner R, Kuner T. Cellular Circuits in the Brain and Their Modulation in Acute and Chronic Pain. *Physiol Rev*. 2021;101(1):213-258.
129. Thompson PM, Jahanshad N, Ching CRK, Salminen LE, Thomopoulos SI, Bright J, Baune BT, Bertolín S, Bralten J, Bruin WB, Bülow R, Chen J, Chye Y, Dannlowski U, de Kovel CGF, Donohoe G, Eyler LT, Faraone SV, Favre P, Filippi CA, Frodl T, Garijo D, Gil Y, Grabe HJ, Grasby KL, Hajek T, Han LKM, Hatton SN, Hilbert K, Ho TC, Holleran L, Homuth G, Hosten N, Houenou J, Ivanov I, Jia T, Kelly S, Klein M, Kwon JS, Laansma MA, Leerssen J, Lueken U, Nunes A, Neill JO, Opel N, Piras F, Piras F, Postema MC, Pozzi E, Shatikhina N, Soriano-Mas C, Spalletta G, Sun D, Teumer A, Tilot AK, Tozzi L, van der Merwe C, Van Someren EJW, van Wingen GA, Völzke H, Walton E, Wang L, Winkler AM, Wittfeld K, Wright MJ, Yun J-Y, Zhang G, Zhang-James Y, Adhikari BM, Agartz I, Aghajani M, Aleman A, Althoff RR, Altmann A, Andreassen OA, Baron DA, Bartnik-Olson BL, Marie Bas-Hoogendam J, Baskin-Sommers AR, Bearden CE, Berner LA, Boedhoe PSW, Brouwer RM, Buitelaar JK, Caeyenberghs K, Cecil CAM, Cohen RA, Cole JH, Conrod PJ, De Brito SA, de Zwarte SMC, Dennis EL, Desrivieres S, Dima D, Ehrlich S, Esopenko C, Fairchild G, Fisher SE, et al. ENIGMA and global neuroscience: A decade of large-scale studies of the brain in health and disease across more than 40 countries. *Transl Psychiatry*. 2020;10(1):100.
130. Schmaal L, Pozzi E, C Ho T, van Velzen LS, Veer IM, Opel N, Van Someren EJW, Han LKM, Aftanas L, Aleman A, Baune BT, Berger K, Blanken TF, Capitão L, Couvy-Duchesne B, Cullen K, Dannlowski U, Davey C, Erwin-Grabner T, Evans J, Frodl T, Fu CHY, Godlewska B, Gotlib IH, Goya-Maldonado R, Grabe HJ, Groenewold NA, Grotegerd D, Gruber O, Gutman BA, Hall GB, Harrison BJ, Hatton SN, Hermesdorf M, Hickie IB, Hilland E, Irungu B, Jonassen R, Kelly S, Kircher T, Klimes-Dougan B, Krug A, Landrø NI, Lagopoulos J, Leerssen J, Li M, Linden DEJ, MacMaster FP, McIntosh A, Mehler DMA, Nenadić I, Penninx BWJH, Portella MJ, Reneman L, Rentería ME, Sacchet MD, Sämann P, Schranke A, Sim K, Soares JC, Stein DJ, Tozzi L, van Der Wee NJA, van Tol M-J, Vermeiren R, Vives-Gilabert Y, Walter H, Walter M, Whalley HC, Wittfeld K, Whittle S, Wright MJ, Yang TT, Zarate C Jr, Thomopoulos SI, Jahanshad N, Thompson PM, Veltman DJ. ENIGMA MDD: seven years of global neuroimaging studies of major depression through worldwide data sharing. *Transl Psychiatry*. 2020;10(1):172.
131. Satizabal CL, Adams HHH, Hibar DP, White CC, Knol MJ, Stein JL, Scholz M, Sargurupremraj M, Jahanshad N, Roshchupkin GV, Smith AV, Bis JC, Jian X, Luciano M, Hofer E, Teumer A, van der Lee SJ, Yang J, Yanek LR, Lee TV, Li S, Hu Y, Koh JY, Eicher JD, Desrivieres S, Arias-Vasquez A, Chauhan G, Athanasiu L, Rentería ME, Kim S, Hoehn D, Armstrong NJ, Chen Q, Holmes AJ, den Braber A, Kloszewska I, Andersson M, Espeseth T, Grimm O, Abramovic L, Alhusaini S, Milaneschi Y, Papmeyer M, Axelsson T, Ehrlich S, Roiz-Santiañez R, Kraemer B, Håberg AK, Jones HJ, Pike GB, Stein DJ, Stevens A, Bralten J, Vernooij MW, Harris TB, Filippi I, Witte AV, Guadalupe T, Wittfeld K, Mosley TH, Becker JT, Doan NT, Hagenaars SP, Saba Y, Cuellar-Partida G, Amin N, Hilal S, Nho K, Mirza-Schreiber N, Arfanakis K, Becker DM, Ames D, Goldman AL, Lee PH, Boomsma DI, Lovestone S, Giddaluru S, Le Hellard S, Mattheisen M, Bohlken MM, Kasperaviciute D, Schmaal L, Lawrie SM, Agartz I, Walton E, Tordesillas-

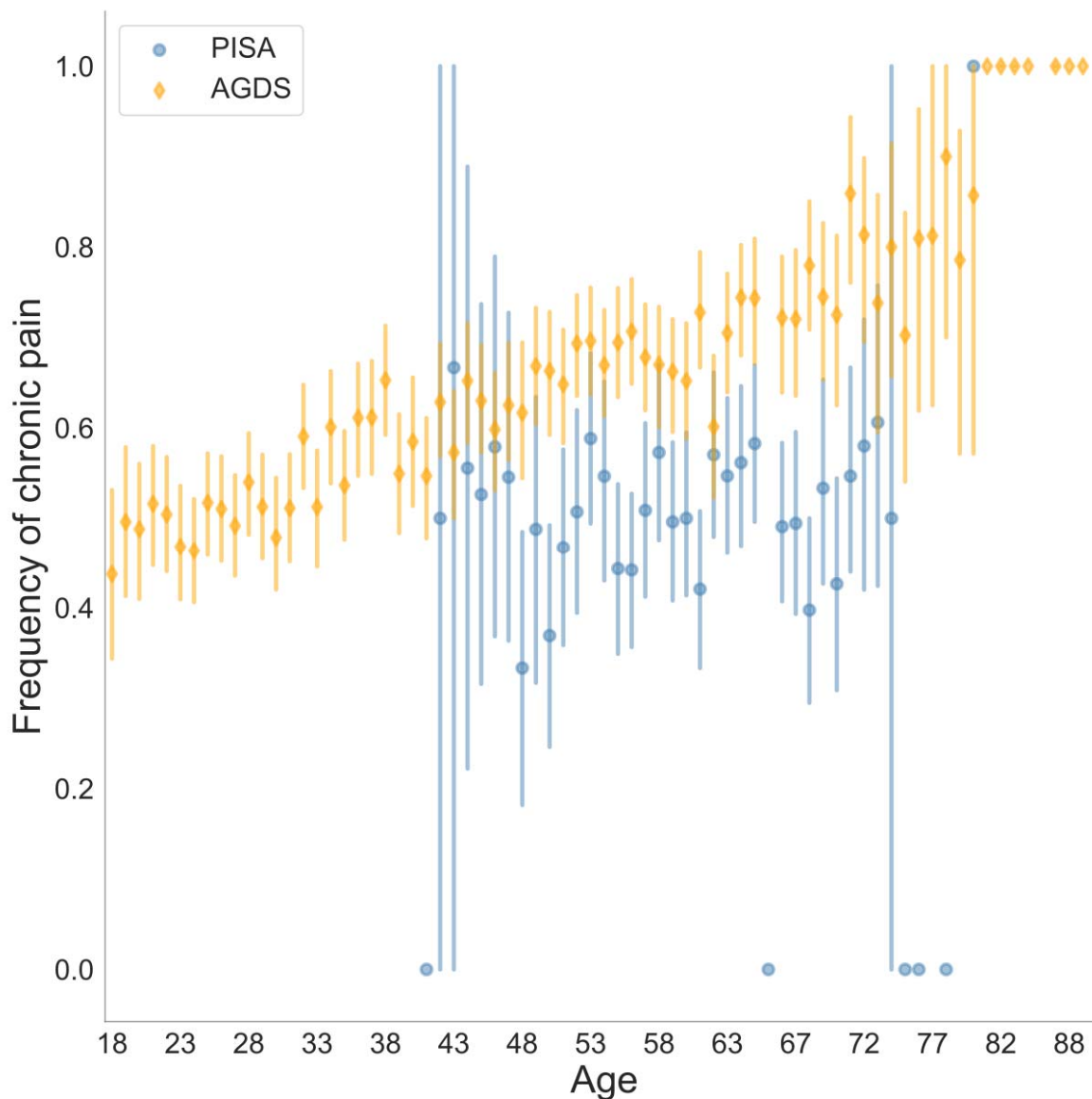
- Gutierrez D, Davies GE, Shin J, Ipser JC, Vinke LN, Hoogman M, Jia T, Burkhardt R, Klein M, Crivello F, Janowitz D, Carmichael O, Haukvik UK, et al. Genetic architecture of subcortical brain structures in 38,851 individuals. *Nat Genet.* 2019;51(11):1624-1636.
132. Buch AM, Liston C. Dissecting diagnostic heterogeneity in depression by integrating neuroimaging and genetics. *Neuropsychopharmacology*. Published online August 11, 2020. doi:10.1038/s41386-020-00789-3
133. Hibar DP, Stein JL, Renteria ME, Arias-Vasquez A, Desrivieres S, Jahanshad N, Toro R, Wittfeld K, Abramovic L, Andersson M, Aribisala BS, Armstrong NJ, Bernard M, Bohlken MM, Boks MP, Bralten J, Brown AA, Chakravarty MM, Chen Q, Ching CRK, Cuellar-Partida G, den Braber A, Giddaluru S, Goldman AL, Grimm O, Guadalupe T, Hass J, Woldehawariat G, Holmes AJ, Hoogman M, Janowitz D, Jia T, Kim S, Klein M, Kraemer B, Lee PH, Olde Loohuis LM, Luciano M, Macare C, Mather KA, Mattheisen M, Milaneschi Y, Nho K, Papmeyer M, Ramasamy A, Risacher SL, Roiz-Santiañez R, Rose EJ, Salami A, Sämann PG, Schmaal L, Schork AJ, Shin J, Strike LT, Teumer A, van Donkelaar MMJ, van Eijk KR, Walters RK, Westlye LT, Whelan CD, Winkler AM, Zwiers MP, Alhusaini S, Athanasiu L, Ehrlich S, Hakobjan MMH, Hartberg CB, Haukvik UK, Heister AJGAM, Hoehn D, Kasperaviciute D, Liewald DCM, Lopez LM, Makkinje RRR, Matarin M, Naber MAM, McKay DR, Needham M, Nugent AC, Pütz B, Royle NA, Shen L, Sprooten E, Trabzuni D, van der Marel SSL, van Hulzen KJE, Walton E, Wolf C, Almasy L, Ames D, Arepalli S, Assareh AA, Bastin ME, Brodaty H, Bulayeva KB, Carless MA, Cichon S, Corvin A, et al. Common genetic variants influence human subcortical brain structures. *Nature.* 2015;520(7546):224-229.
134. Hibar DP, Westlye LT, Doan NT, Jahanshad N, Cheung JW, Ching CRK, Versace A, Bilderbeck AC, Uhlmann A, Mwangi B, Krämer B, Overs B, Hartberg CB, Abé C, Dima D, Grotegerd D, Sprooten E, Bøen E, Jimenez E, Howells FM, Delvecchio G, Temmingh H, Starke J, Almeida JRC, Goikolea JM, Houenou J, Beard LM, Rauer L, Abramovic L, Bonnin M, Ponteduro MF, Keil M, Rive MM, Yao N, Yalin N, Najt P, Rosa PG, Redlich R, Trost S, Hagenaaars S, Fears SC, Alonso-Lana S, van Erp TGM, Nickson T, Chaim-Avancini TM, Meier TB, Elvsåshagen T, Haukvik UK, Lee WH, Schene AH, Lloyd AJ, Young AH, Nugent A, Dale AM, Pfennig A, McIntosh AM, Lafer B, Baune BT, Ekman CJ, Zarate CA, Bearden CE, Henry C, Simhandl C, McDonald C, Bourne C, Stein DJ, Wolf DH, Cannon DM, Glahn DC, Veltman DJ, Pomarol-Clotet E, Vieta E, Canales-Rodriguez EJ, Nery FG, Duran FLS, Busatto GF, Roberts G, Pearlson GD, Goodwin GM, Kugel H, Whalley HC, Ruhe HG, Soares JC, Fullerton JM, Rybakowski JK, Savitz J, Chaim KT, Fatjó-Vilas M, Soeiro-de-Souza MG, Boks MP, Zanetti MV, Otaduy MCG, Schaufelberger MS, Alda M, Ingvar M, Phillips ML, Kempton MJ, Bauer M, et al. Cortical abnormalities in bipolar disorder: an MRI analysis of 6503 individuals from the ENIGMA Bipolar Disorder Working Group. *Mol Psychiatry.* 2017;23(4):932-942.
135. Medland SE, Grasby KL, Jahanshad N, Painter JN, Colodro-Conde L, Bralten J, Hibar DP, Lind PA, Pizzagalli F, Thomopoulos SI, Stein JL, Franke B, Martin NG, Thompson PM, ENIGMA Genetics Working Group. Ten years of enhancing neuro-imaging genetics through meta-analysis: An overview from the ENIGMA Genetics Working Group. *Hum Brain Mapp.* Published online December 10, 2020. doi:10.1002/hbm.25311
136. Cipriani A, Furukawa TA, Salanti G, Chaimani A, Atkinson LZ, Ogawa Y, Leucht S, Ruhe HG, Turner EH, Higgins JPT, Egger M, Takeshima N, Hayasaka Y, Imai H, Shinohara K, Tajika A, Ioannidis JPA, Geddes JR. Comparative Efficacy and Acceptability of 21 Antidepressant Drugs for the Acute Treatment of Adults With Major Depressive Disorder: A Systematic Review and

Network Meta-Analysis. *The Lancet*. 2018;391(10128):1357-1366.

137. Gutsmedl K, Krause M, Bighelli I, Schneider-Thoma J, Leucht S. How well do elderly patients with major depressive disorder respond to antidepressants: a systematic review and single-group meta-analysis. *BMC Psychiatry*. 2020;20(1):102.
138. Whitely M, Raven M, Jureidini J. Antidepressant Prescribing and Suicide/Self-Harm by Young Australians: Regulatory Warnings, Contradictory Advice, and Long-Term Trends. *Front Psychiatry*. 2020;11. doi:10.3389/fpsyt.2020.00478
139. Pain Australia. The National Strategic Action Plan for Pain Management. Accessed December 18, 2020. <https://www.painaustralia.org.au/media/newsletters/89/the-national-strategic-action-plan-for-pain-management>
140. Productivity Commission. Mental Health Report no.95. Published online November 16, 2020. Accessed March 1, 2021. <https://www.pc.gov.au/inquiries/completed/mental-health/report>

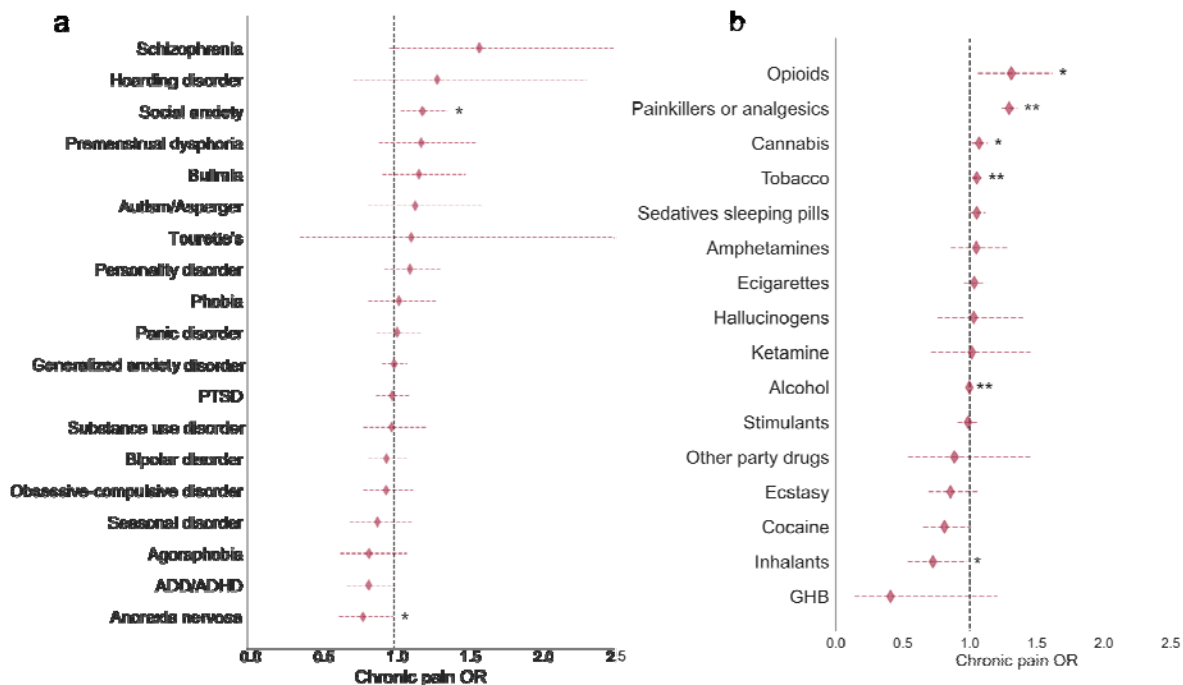


## TABLES AND FIGURES



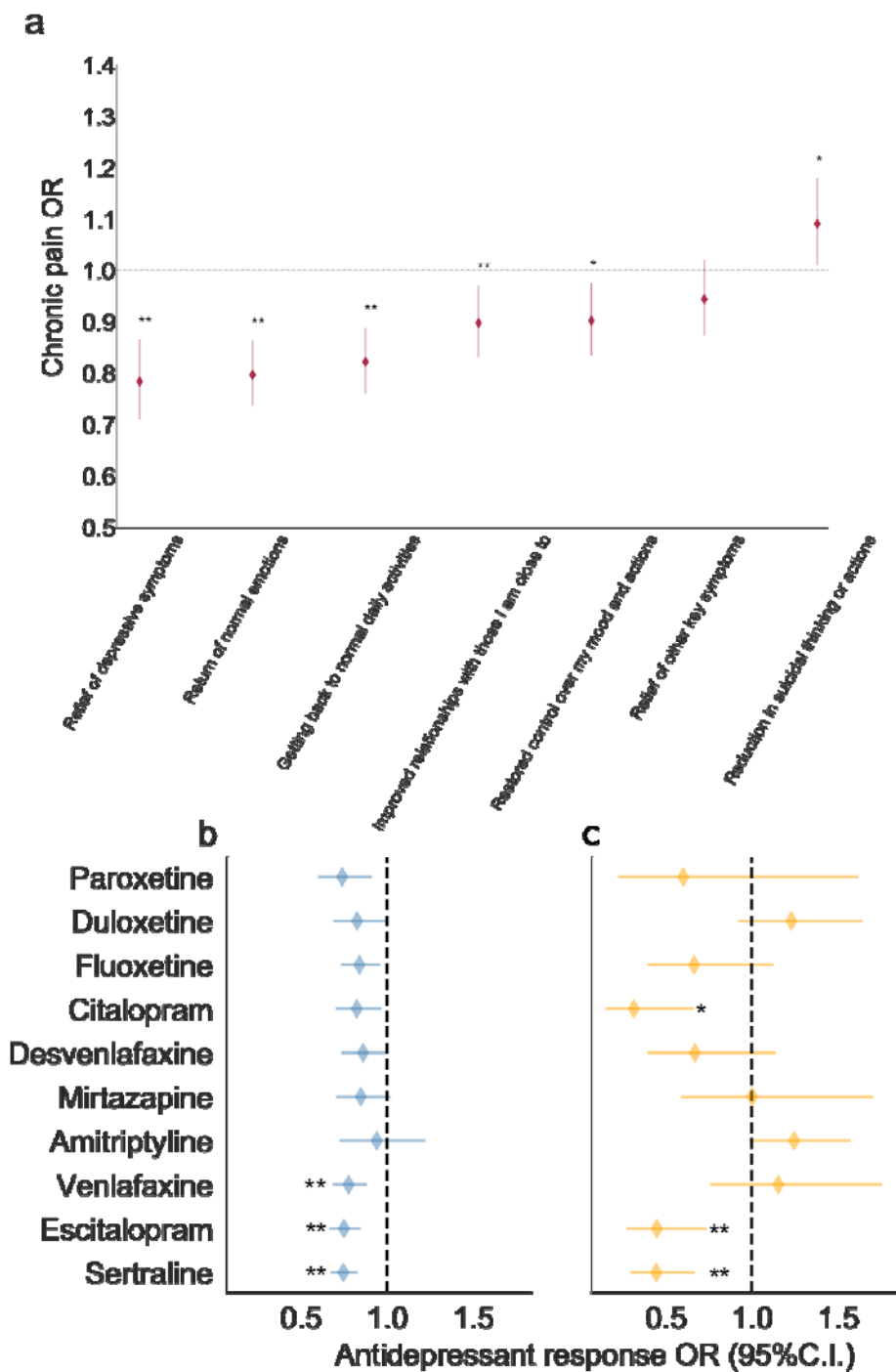
**Figure 1. Prevalence of chronic pain stratified by age and cohort (AGDS vs PISA).**

Self-reported chronic pain was significantly higher in the AGDS cohort (N=6,895/11,370) compared with the PISA cohort (N=1,248/2,469) — OR = 1.31 (0.96–1.77);  $p=0.086$ . For other statistical significance results see **Supplementary Table 1**. Both cohorts are population-based samples with AGDS being enriched for depression.



**Figure 2. Comorbidities and substance use associations with chronic pain in AGDS cohort**

Forest plots depict the chronic pain odds ratios (ORs) for (a) comorbid disorders and (b) recent substance use during the past three months. Chronic pain was significantly associated with decreased use of alcohol, increased use of tobacco, and painkiller misuse (e.g., opioids). Diamonds represent ORs and horizontal lines depict 95% CI. ORs were estimated from a multivariate logistic regression accounting for all relevant covariates (see Methods). \* $p < 0.05$ ; \*\* $p < 0.05$  after Bonferroni correction for multiple testing (AGDS data only).



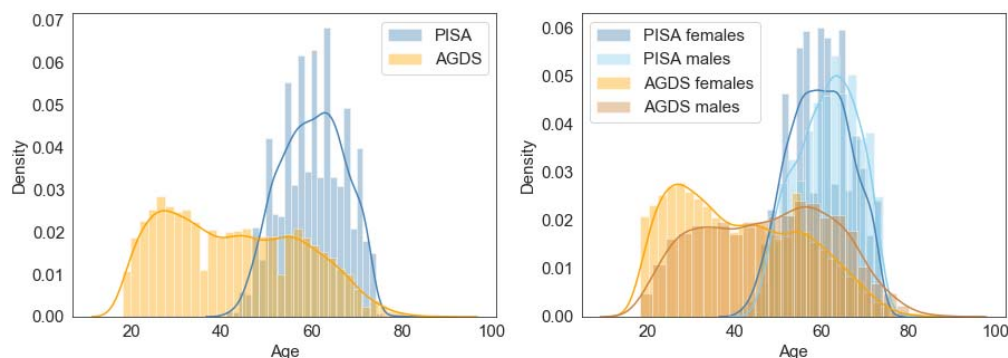
**Figure 3. Effect of chronic pain on antidepressant benefits in AGDS cohort**

Forest plots depicting the results from: (a) association of chronic pain with self-reported benefits from general antidepressant treatment; and associations between antidepressant treatment response and (b) self-reported chronic pain or (c) self-reported prescription for chronic pain, while adjusting for the effects of sex and age at commencement of taking the antidepressant (\* $p < 0.05$ ; \*\* $p < 0.005$  statistical significance after Bonferroni correction for multiple testing; AGDS data only). Further details are in Supplementary Figure 4 and Supplementary Tables 4 and 5.

**Table 1. Chronic pain prevalence in AGDS and PISA cohorts**

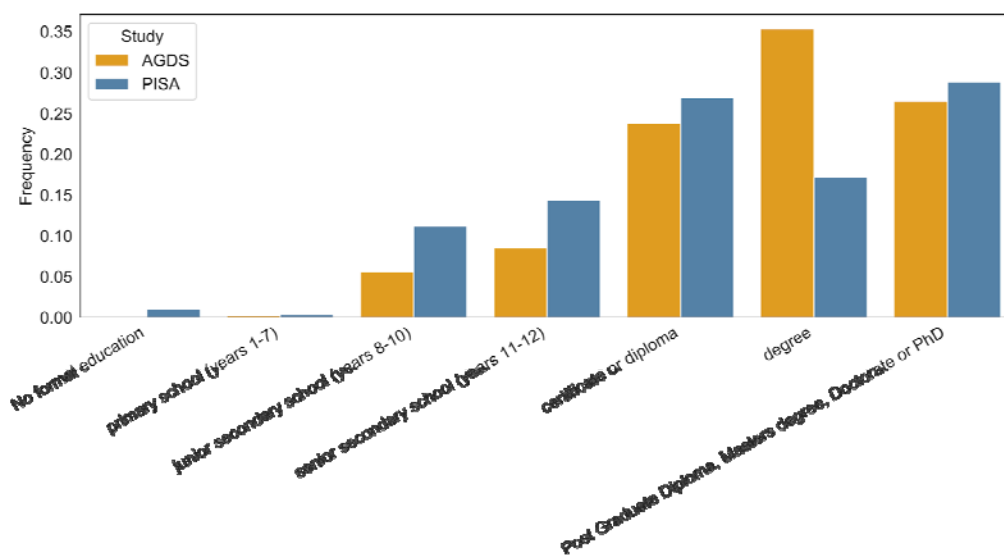
	<b>Cases</b>	<b>Controls</b>
<b>AGDS (depression cohort)</b>		
Sample size N (%)	6,895 (60.6%)	4,475 (39.4%)
Female N (%)	5,215 (60%)	3,402 (40%)
Age mean (sd)*	45 (15.1)	40 (14.3)
<b>PISA</b>		
Sample size N (%)	1,248 (50%)	1,221 (50%)
Depression* N (%)	119 (64%)	68 (36%)
Female N (%)	882 (51%)	854 (49%)
Age mean (sd)	60 (6.8)	60 (6.9)
Cases: participants reporting chronic pain Controls: participants reporting no chronic pain *p<0.05 two-sample t-test or $\chi^2$ test		

## SUPPLEMENTARY FIGURES



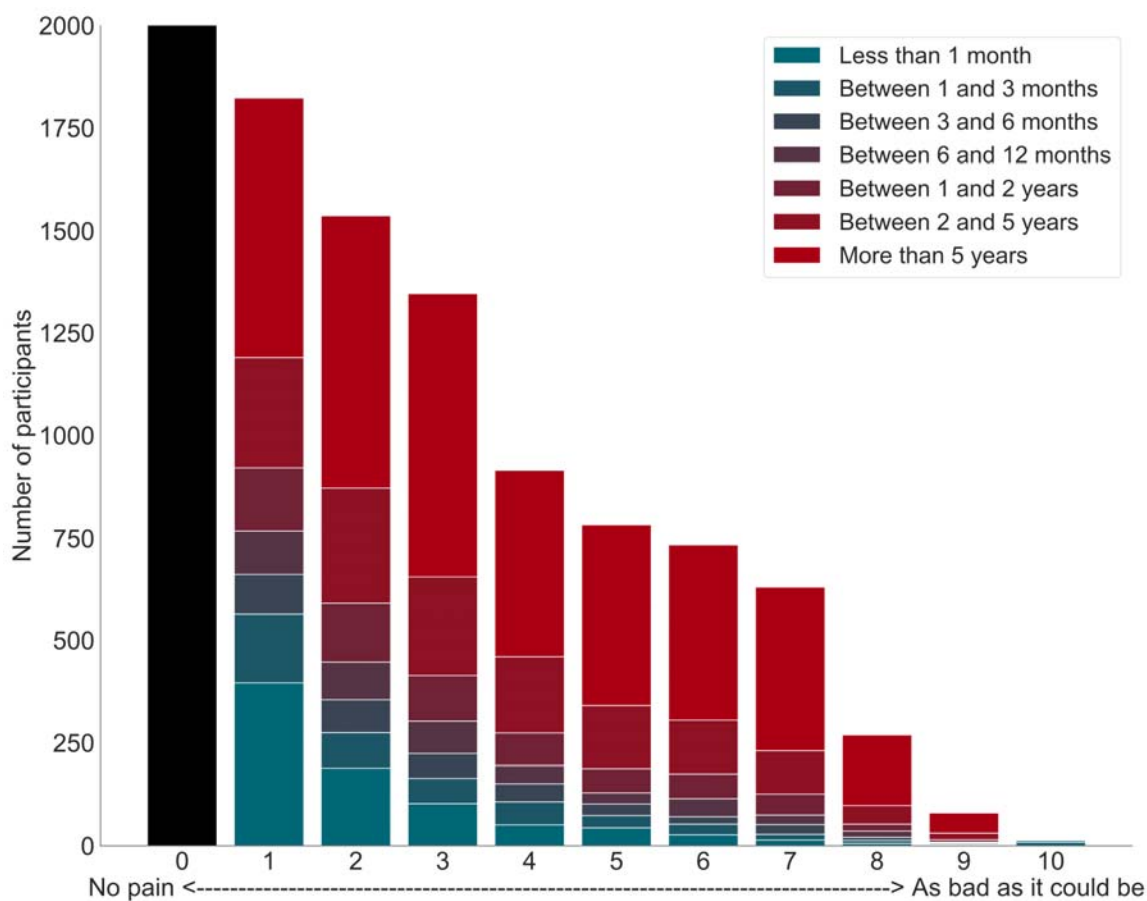
**Supplementary Figure 1. Age and sex distributions in AGDS and PISA cohorts**

Histograms with kernel density plots showing (left) the distribution of ages for AGDS and PISA cohorts and (right) after stratification by sex. Note that the PISA cohort is on average older at the time the participants responded to the questionnaire, but have lower rates of chronic pain on average than the AGDS (depression-enriched) cohort.



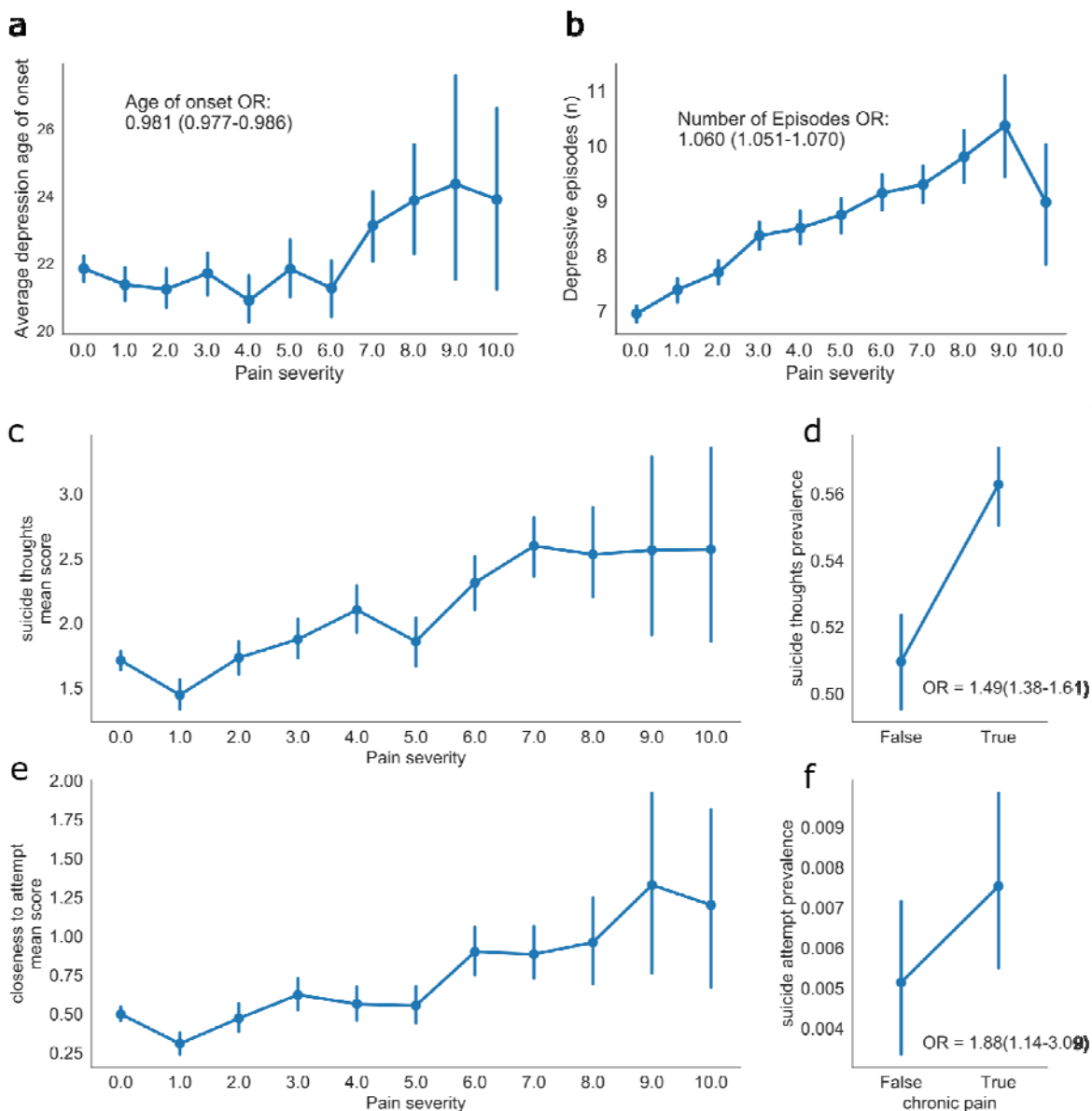
**Supplementary Figure 2. Significant difference in educational attainment between AGDS and PISA cohorts**

Barplots showing the frequency of educational attainment for the AGDS and PISA cohorts. The difference is statistically significant ( $\chi^2$  test  $p < E-100$ ).



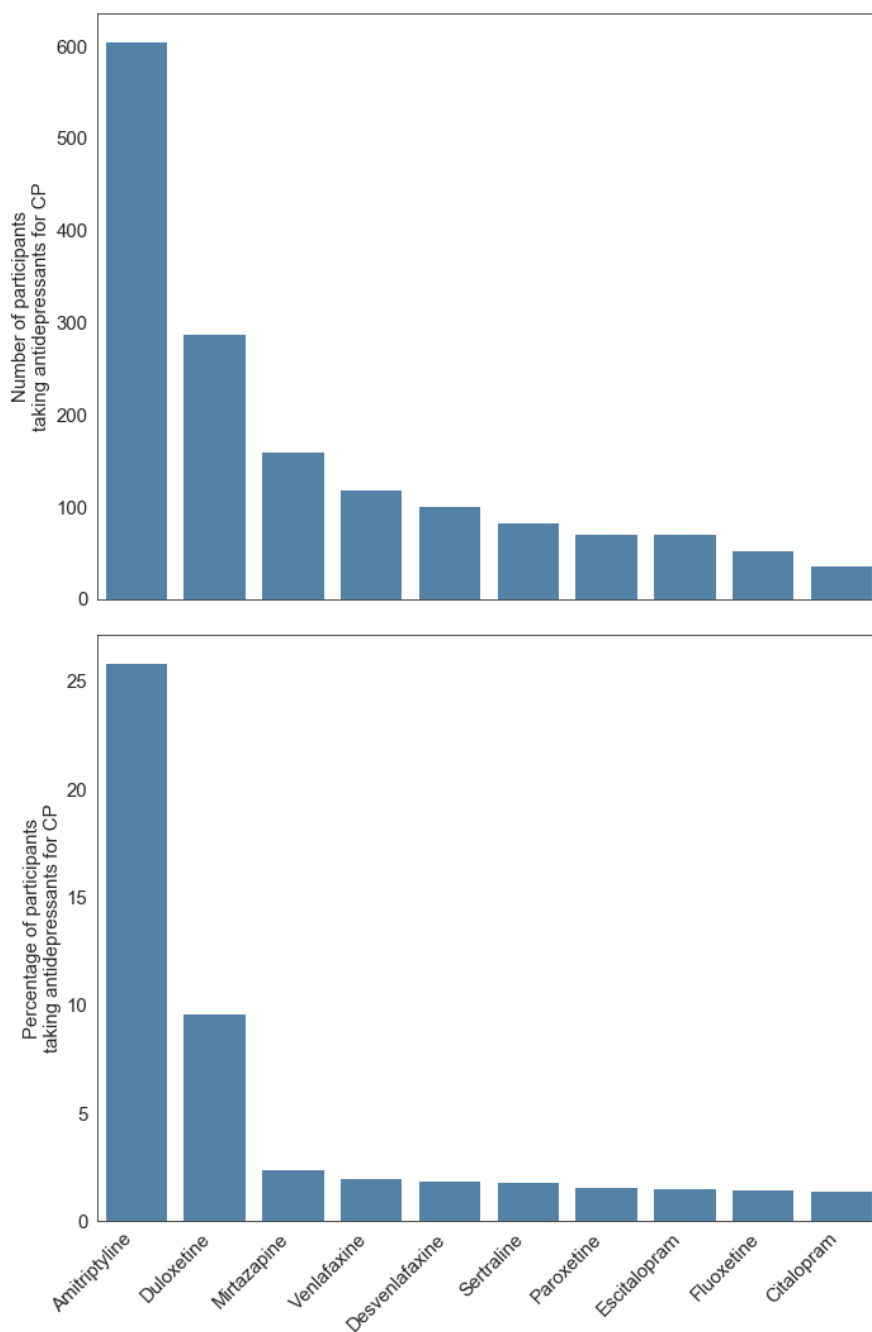
**Supplementary Figure 3. Positive association between pain intensity and pain duration in AGDS cohort**

Bar plots illustrate average pain intensity (x-axis) stratified by pain duration, with a strong positive relationship found between these measures ( $p=5.5e-106$  linear regression; AGDS data only).



**Supplementary Figure 4. Positive association between chronic pain severity (intensity), depression (number of episodes) and suicidality in AGDS cohort**

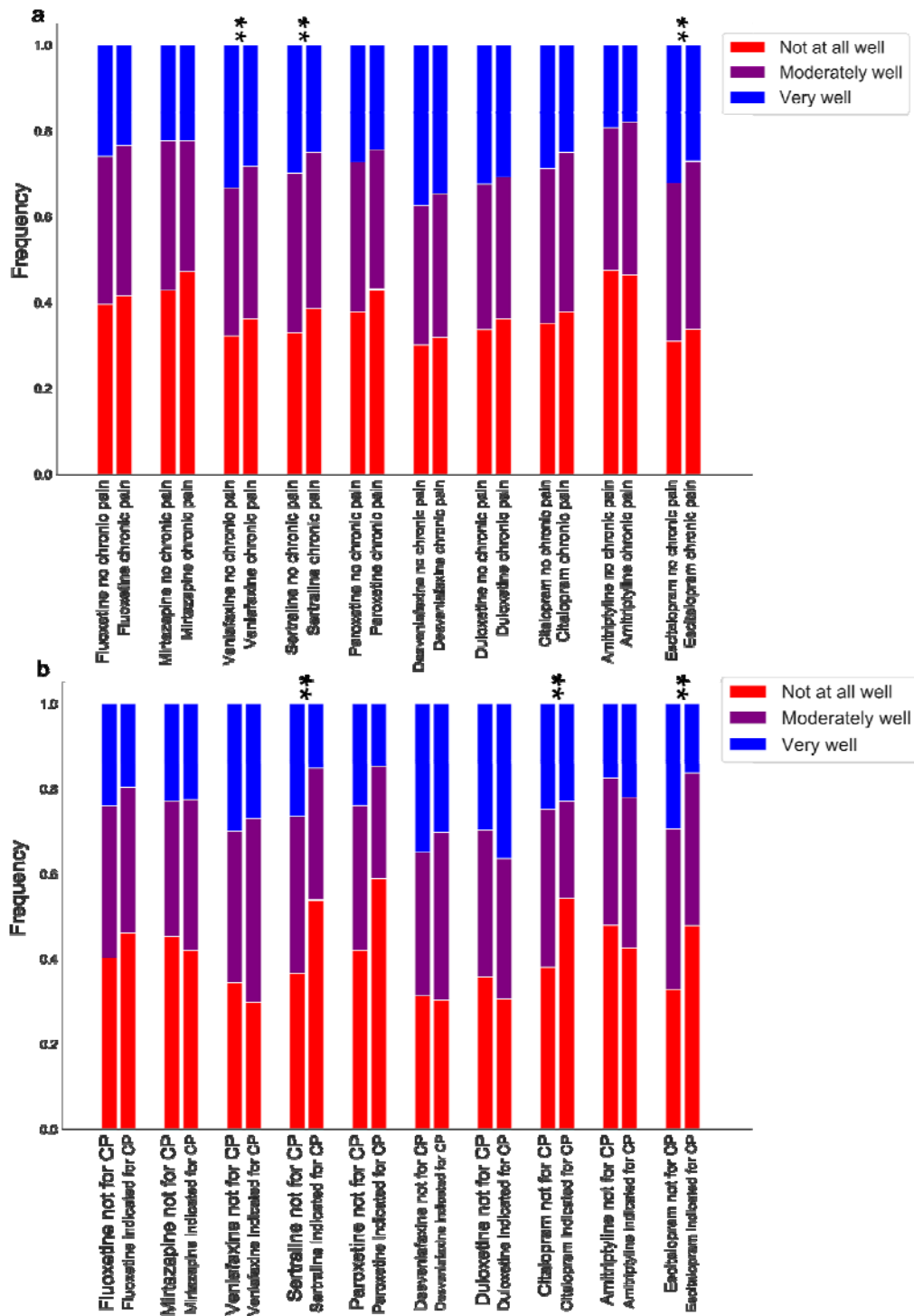
Point plots comparing chronic pain severity with: (a) average age of onset; (b) average number of depressive episodes; (c) average suicide thoughts score; or (e) suicide attempt score. Also shown are differences in the prevalence of (d) recent suicide thoughts and (f) recent suicide attempts. Error bars denote 95% confidence intervals (AGDS data only).



**Supplementary Figure 5. Antidepressant intake by chronic pain participants**

Barplots showing the percentage (number) of participants with comorbid chronic pain (CP) and depression taking ten commonly used antidepressants in Australia (AGDS data only).





**Supplementary Figure 6. Association between antidepressant response, participants with chronic pain and antidepressant prescription for chronic pain**

Bar plots depicting the average antidepressant response score across antidepressants stratified by participants reporting chronic pain (CP), regardless of: **(a)** the clinical indication for the antidepressant; or **(b)** whether the antidepressant was prescribed for chronic pain. Further details including p-values from a cumulative link logistic regression are in **Supplementary Tables 4 and 5** (AGDS data only).

## SUPPLEMENTARY TABLES

<b>Supplementary Table 1. Effect of demographic variables, depression and cohort on chronic pain</b>		
	OR (95%CI)	p-value
Cohort (AGDS)	1.31 (0.96–1.77)	0.086
Sex (female)	1.16 (1.07–1.26)	0.0003
Depression*	1.95 (1.42–2.66)	2.80E-05
Education	0.887 (0.86–0.91)	1.00E-14
Age	1.02 (1.02–1.03)	6.90E-74

These results are from a multivariate logistic regression on chronic pain. Fully adjusted ORs are shown. Cohort represents a categorical variable of whether participants were from the AGDS cohort compared to the PISA cohort. \*The effect of self-reported depression available on PISA and AGDS (all cases). Note the lack of association with cohort after adjustment for sex, age, education and depression.

**Supplementary Table 2. Other psychiatric comorbidities with chronic pain**

<b>Diagnosis</b>	<b>OR (95% CI)</b>	<b>p-value</b>
Bipolar disorder	0.947 (0.82–1.09)	0.4570
Premenstrual dysphoria	1.19 (0.90–1.57)	0.2355
Schizophrenia	1.58 (0.97–2.58)	0.0675
Anorexia nervosa	0.788 (0.62–0.99)	0.0443
Bulimia	1.17 (0.92–1.49)	0.2003
ADD/ADHD	0.826 (0.68–1.01)	0.0602
Autism/Asperger	1.14 (0.82–1.60)	0.4294
Tourette's	1.12 (0.36–3.49)	0.8502
Generalized anxiety	0.999 (0.92–1.09)	0.9889
Panic disorder	1.02 (0.88–1.18)	0.8050
Obsessive-compulsive disorder	0.945 (0.79–1.13)	0.5344
Hoarding disorder	1.29 (0.72–2.32)	0.3870
PTSD	0.987 (0.88–1.11)	0.8335
Phobia	1.03 (0.82–1.29)	0.7949
Seasonal disorder	0.885 (0.70–1.12)	0.3179
Social anxiety	1.19 (1.04–1.36)	0.0096
Agoraphobia	0.828 (0.63–1.09)	0.1724
Personality disorder	1.11 (0.93–1.32)	0.2440
Substance use	0.984 (0.79–1.22)	0.8814
Multivariate logistic regression assessing chronic pain comorbidities. Multiple testing corrected significance threshold: $p < 0.0026$		

**Supplementary Table 3. Correlations between recent substance use and chronic pain (CP)**

Substance	CP OR (95%CI)	p-value
GHB (gamma hydroxybutyrate)	0.409 (0.14–1.21)	0.105
Inhalants	0.723 (0.54–0.98)	0.035
Cocaine	0.811 (0.65–1.01)	0.060
Ecstasy	0.857 (0.69–1.06)	0.161
Other party drugs	0.886 (0.54–1.46)	0.632
Stimulants	0.986 (0.91–1.07)	0.744
Alcohol	0.997 (0.99–1.00)	3.17E-04
Ketamine	1.02 (0.71–1.45)	0.933
Hallucinogens	1.03 (0.76–1.40)	0.850
E-cigarettes	1.03 (0.95–1.12)	0.421
Amphetamines	1.05 (0.86–1.28)	0.640
Sedatives or sleeping pills	1.05 (0.99–1.11)	0.080
Tobacco	1.05 (1.02–1.09)	0.002
Cannabis	1.07 (1.01–1.13)	0.016
Painkillers or analgesics*	1.29 (1.24–1.35)	1.00E-29
Opioids*	1.31 (1.06–1.62)	0.012

Alcohol use was measured as the number of days drinking three or more standard drinks in the past three months. All other variables were measured on a scale ranging from never to daily or almost daily for the past three months. \*Non-medical use of opioids & over-the-counter or other painkillers/analgesics

<b>Supplementary Table 4. Percentage of chronic pain participants with an antidepressant indication for chronic pain or for depression</b>		
<b>Antidepressant</b>	<b>Chronic pain indication %</b>	<b>Depression indication %</b>
Sertraline	2.83	97.29
Escitalopram	2.62	96.45
Venlafaxine	3.28	96.97
Amitriptyline	31.05	61.60
Mirtazapine	4.37	89.78
Desvenlafaxine	3.31	96.96
Citalopram	2.18	95.45
Fluoxetine	2.46	95.35
Duloxetine	15.32	94.95
Paroxetine	2.11	92.67

<b>Supplementary Table 5. Functional benefits associated with antidepressant use in participants with chronic pain</b>		
<b>Self-reported benefit</b>	<b>OR (95% C.I.)</b>	<b>p-value</b>
<b>Relief of depressive symptoms</b>	0.78 (0.71–0.87)	1.5E-06
<b>Return of normal emotions</b>	0.80 (0.74–0.86)	2.6E-08
<b>Getting back to normal daily activities</b>	0.82 (0.76–0.89)	9.2E-07
<b>Improved relationships with those I am close to</b>	0.90 (0.83–0.97)	0.01
<b>Restored control over my mood and actions</b>	0.90 (0.83–0.98)	0.01
<b>Relief of other key symptoms</b>	0.94 (0.87–1.02)	0.15
<b>Reduction in suicidal thinking or actions</b>	1.09 (1.01–1.18)	0.03

<b>Supplementary Table 6. Effect of chronic pain on antidepressant response</b>				
<b>Antidepressant</b>	<b>N</b>	<b>beta</b>	<b>S.E.</b>	<b>p-value</b>
Sertraline*	5,189	-0.29132	0.053	4.42E-08
Escitalopram*	3,877	-0.28702	0.061	2.96E-06
Venlafaxine*	3,540	-0.25168	0.065	1.13E-04
Amitriptyline	1,293	-0.06086	0.134	0.650
Mirtazapine	1,718	-0.16407	9.48E-02	0.083
Desvenlafaxine	2,262	-0.14898	0.080	0.063
Citalopram	2,236	-0.19203	0.082	0.019
Fluoxetine	3,178	-0.1739	0.069	0.012
Duloxetine	1,776	-0.18966	0.093	0.042
Paroxetine	1,361	-0.30056	0.107	0.005
*p<0.05 after Bonferroni multiple-testing correction for 10 variables/antidepressants				

<b>Supplementary Table 7. Effect of chronic pain indication on antidepressant treatment response</b>				
<b>Antidepressant</b>	<b>N</b>	<b>beta</b>	<b>S.E.</b>	<b>p-value</b>
Sertraline*	5,189	-0.80599	0.207	1.00E-04
Escitalopram*	3,877	-0.79848	0.253	0.002
Venlafaxine	3,540	0.143459	0.214	0.503
Amitriptyline	1,293	0.220429	0.119	0.064
Mirtazapine	1,718	0.003402	0.271	0.990
Desvenlafaxine	2,262	-0.39922	0.270	0.140
Citalopram*	2,236	-1.14947	0.379	0.002
Fluoxetine	3,178	-0.40595	0.268	0.130
Duloxetine	1,776	0.2071	0.148	0.161
Paroxetine	1,361	-0.50542	0.503	0.315
*p<0.05 after Bonferroni multiple-testing correction for 10 variables/antidepressants				