

1 Anti-SARS-CoV-2 IgG antibodies are associated with reduced viral load

2

3 Andrew Bryan¹, Susan L. Fink¹, Meghan A. Gattuso², Gregory Pepper¹, Anu Chaudhary¹, Mark H.

4 Wener^{1,3}, Chihiro Morishima¹, Keith R. Jerome^{1,4}, Patrick C. Mathias^{1,5}, Alexander L.

5 Greninger^{1,4,#}

6

7

8

9

10 ¹ Department of Laboratory Medicine, University of Washington School of Medicine, Seattle,

11 WA

12 ² Aquaelis, LLC

13 ³ Department of Medicine, University of Washington School of Medicine, Seattle, WA

14 ⁴ Vaccine and Infectious Disease Division, Fred Hutchinson Cancer Research Center, Seattle, WA

15 ⁵ Department of Biomedical Informatics and Medical Education, University of Washington

16 School of Medicine, Seattle, WA

17

18 # Corresponding author, agrening@uw.edu

19

20

21 Running title: SARS-CoV-2 IgG viral load

22

23

24 **Abstract**

25 Anti-SARS-CoV-2 antibodies have been described, but correlation with virologic outcomes is
26 limited. Here, we find anti-SARS-CoV-2 IgG to be associated with reduced viral load. High viral
27 loads were rare in individuals who had seroconverted. Higher viral load on admission was
28 associated with increased 30-day mortality (OR 4.20 [95% CI: 1.62-10.86]).

29

30 Introduction

31 SARS-CoV-2 is a novel coronavirus associated with high morbidity and mortality that has
32 rapidly spread across the world. After initial concerns surrounding test characteristics, accurate
33 serological testing for SARS-CoV-2 is increasingly becoming available in the United States. For
34 instance, we have previously shown the Abbott Architect anti-SARS-CoV-2 nucleocapsid IgG
35 assay to be both highly sensitive and specific for detecting prior SARS-CoV-2 infection [1].
36 However, data correlating these antibody results to meaningful virologic and clinical outcomes
37 is currently lacking.

38 Here, we examined clinical and virologic features associated with seropositivity and
39 seroconversion to SARS-CoV-2 in a cohort of hospitalized patients in Seattle, Washington. We
40 specifically sought to assess whether detection of anti-SARS-CoV-2 antibodies was associated
41 with a better prognosis, including lower viral load and reduced 30-day all-cause mortality.

42

43 Methods

44 *Study population and clinical laboratory testing*

45 Patients with positive SARS-CoV-2 RT-PCR results from nasopharyngeal swabs were
46 identified at UW Medicine hospitals and excess serum and plasma samples were retrieved for
47 SARS-CoV-2 antibody testing. Samples were enriched for patients that had RT-PCR results
48 available on the same calendar date as a remnant serum or plasma sample. A total of 245
49 patients were identified with at least one residual serum/plasma sample and at least one
50 clinical note available for chart review to determine days from symptom onset. The population
51 was 40% female; age by decade was: 10-20: 0.4%, 20-29 4.9%, 30-39 6.9%, 40-49 11.0%, 50-59

52 17.1%, 60-69 18.8%, 70-79 21.2%, 80-89 12.2%, 90-99 7.3%. The primary clinical encounter was
53 inpatient for 194 patients, emergency department for 39, and outpatient for 12. Eight patients
54 were asymptomatic at the time of initial PCR result; for these patients, day of symptom onset
55 was therefore set at the date of first positive PCR. 30-day mortality was determined by manual
56 chart review for all patients that had either a RT-PCR result or an IgG result from the day of
57 admission and calculated from the day of first positive PCR. The number of subjects included in
58 the different analyses is described in the Results, as data were not available for all subjects at
59 all time points. The study was approved under a consent waiver by the University of
60 Washington IRB.

61 Anti-SARS-CoV-2 nucleocapsid IgG was determined by the Abbott Architect as previously
62 described [1]. The manufacturer's suggested cut-off of 1.40 was used for seropositivity. SARS-
63 CoV-2 qRT-PCR was performed using Hologic Panther Fusion, DiaSorin Simplexa, Roche Cobas
64 6800 platforms, or a CDC-based laboratory developed test (LDT) [2]. Cycle threshold (Ct) values
65 were available from the Hologic Panther Fusion and LDT assays and were treated
66 interchangeably given their close correlation [2]. A Ct of 22 is equivalent to approximately
67 2,500,000 copies/mL viral transport media in these assays [3].

68

69 *Data analysis and visualization*

70 The association between SARS-CoV-2 IgG index value and Ct was assessed using a linear
71 mixed effects model with significance determined by restricted maximum likelihood ratio using
72 R packages lme4 and lmerTest [4,5]. To account for singularity, the model incorporated scaling
73 and a weak Bayesian prior via the R package blme [6]. Multivariate logistic regression to

74 determine association of Ct value and mortality was performed using the base R function.
75 Visualization was performed using ggplot2 [7].

76

77 **Results**

78 A total of 181 patients had both an Abbott Architect anti-SARS-CoV-2 nucleocapsid IgG
79 index value and a SARS-CoV-2 PCR Ct value available from the same calendar day. Several
80 patients had quantitative PCR and serology data available from multiple days, resulting in a
81 total of 224 total unique patient-days. Comparison of qRT-PCR and serology data revealed only
82 one SARS-CoV-2 seropositive individual with a simultaneous SARS-CoV-2 Ct < 22 (Figures 1A-B).
83 While both Ct and IgG signal/index ratio increased with increasing days since symptom onset,
84 IgG was found to be inversely correlated with SARS-CoV-2 viral load ($p < 0.001$). To substantiate
85 this association at the individual patient level, we identified patients with more than three
86 measures of SARS-CoV-2 IgG and viral load. Although the kinetics of SARS-CoV-2 IgG and viral
87 load varied between individual patients, these parameters consistently trended together in
88 individual patients (Figures 1C-H). Lymphocyte counts increased and inflammatory markers
89 decreased over time in these patients (Figure S1), concomitant with a decreasing viral load
90 (Figure 1C-H).

91 To test whether seroconversion or high viral loads were associated with mortality, we
92 examined SARS-CoV-2 viral load ($n=109$) and anti-SARS-CoV-2 IgG index values ($n=114$) on
93 admission and 30-day all-cause mortality from day of PCR positivity (Figures 1I-J). The viral load
94 on admission was found to be independently associated with mortality, after adjusting for
95 SARS-CoV-2 serostatus, age, and sex ($p = 0.01$). Patients with a high viral load on admission (Ct <

96 22) had a significantly greater odds of mortality (OR 4.20 [95% CI: 1.62-10.86] compared to
97 patients with lower viral loads (Ct > 22). Thirty-three percent of patients (38/114)
98 seroconverted prior to admission. Seroconversion on admission trended towards lower
99 mortality, although this relationship was not statistically significant (OR 0.43 [95% CI: 0.15-
100 1.26]) (Figure 1J).

101

102 **Discussion**

103 Here we demonstrate that detection of anti-SARS-CoV-2 IgG antibodies is associated
104 with lower viral loads in COVID-19 patients. This antibody response also tracked closely with
105 the amount of viral nucleic acid in individual patients over time. Due to the close relationships
106 of both IgG and viral load with days since symptom onset, we could not conclude that the viral
107 load dependence on IgG response was independent from the passage of time, but days since
108 symptom onset was accounted for in our mixed effects model. Our data further indicate that
109 viral load at admission is a significant independent predictor of 30-day mortality. Individuals
110 who were SARS-CoV-2 antibody positive on admission were less than half as likely to die within
111 30 days, though this relationship was not statistically significant. The inability to reach
112 statistical significance is likely due to the limited study population size (power = 0.56 for an OR
113 of 0.5).

114 Our data provide support for a disease model in which the development of anti-SARS-
115 CoV-2 immune response leads to control of the virus in humans. While our data do not directly
116 assess the potential for ongoing immunity against future infections of SARS-CoV-2, they
117 indicate that high viral loads almost never coexist with SARS-CoV-2 seropositivity and that

118 antibodies are indicative of a protective anti-viral response and reduced 30-day all-cause
119 mortality.

120 Our data provide further support for quantitative viral load assessment, especially on
121 hospital admission. Our results agree with other work that has shown viral load to be
122 associated with disease severity [8]. Currently, the FDA has only authorized reporting of
123 qualitative results from SARS-CoV-2 qRT-PCR tests, despite nearly all tests returning some
124 estimate of viral load. Indeed, our clinical laboratory has reported semi-quantitative results for
125 respiratory viruses for more than a decade. Quantitative reporting of SARS-CoV-2 molecular or
126 serologic assays would require significant modifications of existing emergency use
127 authorizations. Our data further suggest that a cycle threshold of 22 may serve as a useful
128 discrete cut-off for significant viral replication that is associated with mortality. We note,
129 however, that sample and swab variability across patient populations may limit the widespread
130 use of a discrete cutoff for quantitative RT-PCR results.

131 The main limitation of our study was the retrospective nature in a population enriched
132 for hospitalized patients with acute disease. The retrospective nature precluded analyses of
133 viral clearance and length of stay due to significant confounding factors associated with RT-PCR
134 testing frequency during admission and patient discharge placement. Although we had
135 insufficient sample size to perform separate analyses with patients who only presented to the
136 emergency department or outpatient clinic, results appeared similar to the full data set (Figure
137 S2). Our serological test detects IgG antibodies against the nucleocapsid protein of SARS-CoV-2,
138 and the correlation between these antibodies and neutralizing antibody responses is unknown.
139 Variability in neutralizing responses between patients not elucidated by our assay may explain

140 some of the variation in our data set. However, neutralizing antibody assays are *in vitro*
141 methods that may or may not be associated with clinically meaningful outcomes unless
142 performed in concert with challenge studies. In addition, non-neutralizing antibodies may also
143 confer protection against infection in some viral infections [9].

144 Our work illustrates the importance of serological testing for SARS-CoV-2 infection. The
145 association of the presence of anti-SARS-CoV-2 nucleocapsid IgG with lower viral load indicates
146 antibodies may serve as a biomarker for COVID-19 disease course and infectious risk of the
147 individual to the community.

148

149 **Acknowledgements**

150 The authors would like to thank Nathan Breit of the University of Washington Department of
151 Laboratory Medicine for assistance in obtaining data and Thomas E. Grys of the Mayo Clinic in
152 Arizona for critical review of the manuscript. We also thank the University of Washington
153 Medical Center (UWMC) Northwest Campus clinical laboratory staff and the UWMC Clinical
154 Immunology staff for reserving remnant serum and plasma samples from COVID-19 PCR positive
155 patients.

156

157 **Funding**

158 This work was supported by the Department of Laboratory Medicine at the University of
159 Washington Medical Center.

160

161 **Conflict of Interest**

162 ALG reports personal fees from Abbott Molecular, outside of the submitted work.

163 AB,SLF,MAG,GP,AC,MHW,CM,KRJ,PCM report no conflicts of interest.

164

165 **References**

- 166 1. Bryan A, Pepper G, Wener MH, et al. Performance Characteristics of the Abbott Architect
167 SARS-CoV-2 IgG Assay and Seroprevalence in Boise, Idaho. *J Clin Microbiol* **2020**; Available
168 at: <https://jcm.asm.org/content/early/2020/05/07/JCM.00941-20>. Accessed 17 May 2020.
- 169 2. Lieberman JA, Pepper G, Naccache SN, Huang M-L, Jerome KR, Greninger AL. Comparison of
170 Commercially Available and Laboratory Developed Assays for in vitro Detection of SARS-
171 CoV-2 in Clinical Laboratories. *J Clin Microbiol* **2020**; Available at:
172 <https://jcm.asm.org/content/early/2020/04/27/JCM.00821-20>. Accessed 17 May 2020.
- 173 3. Ga P, Ak N, MI H, et al. Validation of SARS-CoV-2 Detection Across Multiple Specimen Types.
174 *J Clin Virol*, 2020. Available at:
175 [https://pubmed.ncbi.nlm.nih.gov/32405257/?from_single_result=32405257&expanded_se](https://pubmed.ncbi.nlm.nih.gov/32405257/?from_single_result=32405257&expanded_search_query=32405257)
176 [arch_query=32405257](https://pubmed.ncbi.nlm.nih.gov/32405257/?from_single_result=32405257&expanded_search_query=32405257). Accessed 19 May 2020.
- 177 4. Bates, Douglas, Bolker, Ben, Walker, Steve. Fitting Linear Mixed-Effects Models Using lme4.
178 *J Stat Softw* **2015**; 67:1–48.
- 179 5. Kuznetsova, Alexandra, Brockhoff, Per B., Christensen, Rune H. B. lmerTest Package: Tests in
180 Linear Mixed Effects Models. *J Stat Softw* **2017**; 82:1–26.
- 181 6. Chung Y, Rabe-Hesketh S, Dorie V, Gelman A, Liu J. A nondegenerate penalized likelihood
182 estimator for variance parameters in multilevel models. *Psychometrika* **2013**; 78:685–709.
- 183 7. Wickham, Hadley. *ggplot2: Elegant Graphics for Data Analysis*. Springer-Verlag, 2016.
184 Available at: <https://ggplot2.tidyverse.org>.
- 185 8. Zheng S, Fan J, Yu F, et al. Viral load dynamics and disease severity in patients infected with
186 SARS-CoV-2 in Zhejiang province, China, January-March 2020: retrospective cohort study.
187 *BMJ* **2020**; 369. Available at: <https://www.bmj.com/content/369/bmj.m1443>. Accessed 17
188 May 2020.
- 189 9. Ilinykh PA, Huang K, Santos RI, et al. Non-neutralizing Antibodies from a Marburg Infection
190 Survivor Mediate Protection by Fc-Effector Functions and by Enhancing Efficacy of Other
191 Antibodies. *Cell Host Microbe* **2020**;

192

193

194 **Figure Legends**

195 **Figure 1.** A-B) Unique patient-days with an anti-nucleocapsid IgG index value and viral load
196 (qRT-PCR Ct value) on the same calendar day. The dashed vertical line indicates the
197 manufacturer's seropositivity index value cutoff of 1.40. The dashed horizontal line indicates a
198 Ct value of 22. Colors indicate days from symptom onset (A) or days since first positive PCR (B).
199 C-H) Six representative patients with > 3 IgG (blue) and Ct (green) results available over the
200 course of their hospital stay. X-axis indicates days from first positive PCR. Dashed horizontal line
201 indicates the IgG cutoff of 1.40. Green Xs indicate RT-PCR results with no nucleic acid detected.
202 I) Patients with a Ct value available on the day of admission. Red X data points indicate patients
203 who expired within 30 days of their first positive PCR result. The dashed vertical line indicates
204 the manufacturer's seropositivity threshold of 1.40. J) Patients with an IgG result available on
205 the day of admission. Red X data points indicate patients who expired within 30 days of first
206 positive PCR result. The dashed vertical line indicates a Ct value of 22.

207

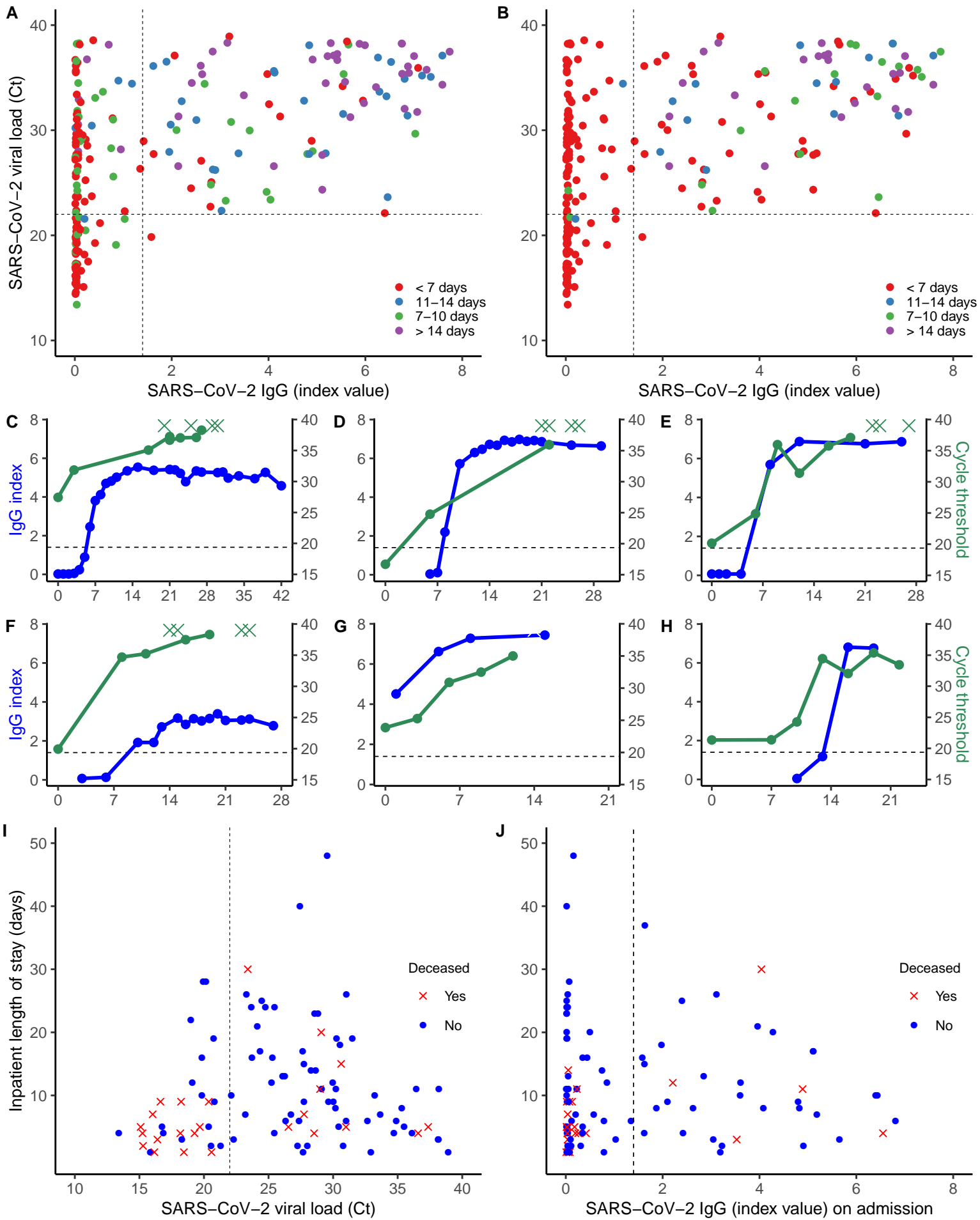
208

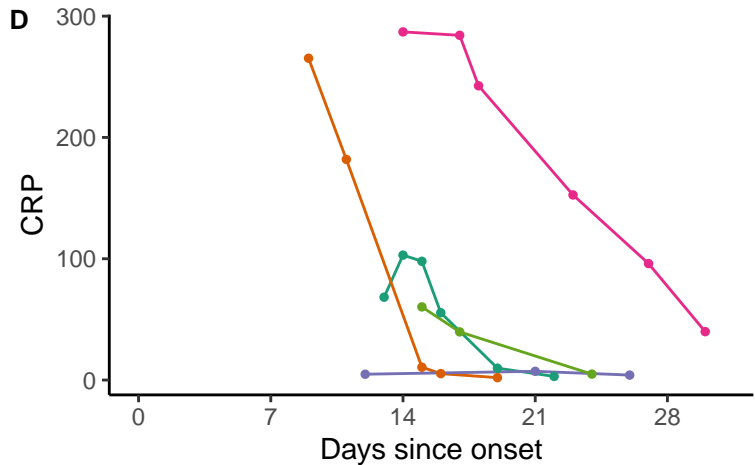
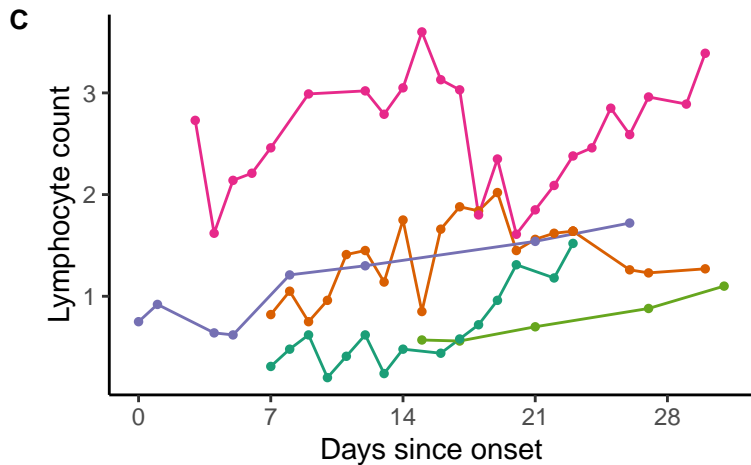
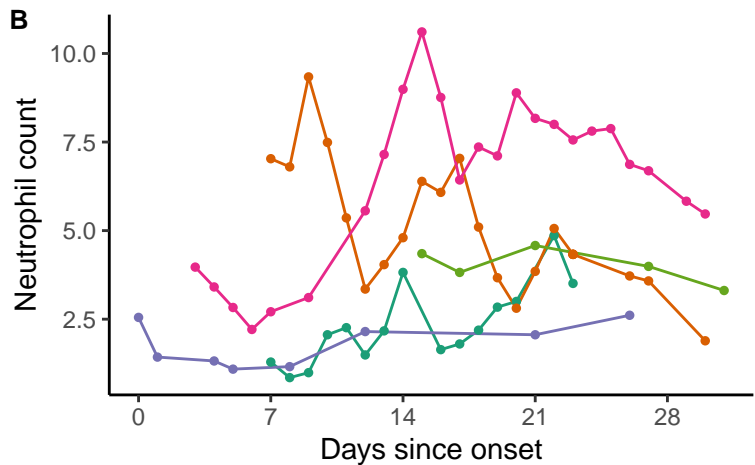
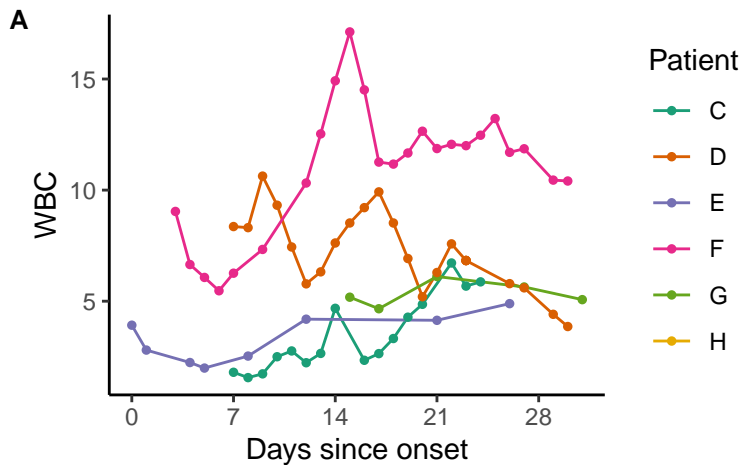
209 **Supplemental Figures**

210 **Figure S1.** Hematology cell counts (panels A-C) or CRP by day since symptom onset for the six
211 patients presented in Figures 1C-H. Patient H did not have cell count or CRP data available.

212

213 **Figure S2.** Patients who had their primary encounter as an outpatient or emergency
214 department-only visit. Data indicate unique patient-days with an anti-nucleocapsid IgG index
215 value and RT-PCR Ct value on the same calendar day. The dashed vertical line indicates the
216 manufacturer's IgG index value cutoff of 1.40. Dashed horizontal line indicates a Ct value of 22.
217 Colors indicate days from symptom onset.





Cycle threshold

