

1 **High-throughput immunoassays for SARS-CoV-2 – considerable differences in**
2 **performance when comparing three methods**

3 *Oskar Ekelund, MD^{1,2}, Kim Ekblom, MD, PhD^{3,4}, Sofia Somajo, MSc, PhD², Johanna*
4 *Pattison-Granberg PhD³, Karl Olsson, BSc², and Annika Petersson, MSc, PhD³*

5 ¹Department of Clinical Microbiology, Växjö Central Hospital, Växjö, Sweden; ²Department
6 of Clinical Microbiology, Blekinge County Hospital, Karlskrona, Sweden; ³Department of
7 Clinical Chemistry and Transfusion Medicine, Växjö Central Hospital, Växjö, Sweden;

8 ⁴Department of Medical Biosciences, Clinical Chemistry, Umeå University, Umeå, Sweden

9

10 **Corresponding author:** Annika Petersson
11 Department of Clinical Chemistry and Transfusion Medicine
12 Centrallasarettet Växjö
13 SE-35185 Växjö
14 Sweden
15 phone +46 (0)470 58 7978
16 cell phone +46 (0) 767 259609
17 e-mail annika.petersson@kronoberg.se
18
19

20 **Running head:** Serology methods for SARS-CoV-2

21 **Author ORCID ID:** Oskar Ekelund 0000-0001-6621-0244

22 Kim Ekblom 0000-0003-2844-1310

23 Sofia Somajo 0000-0003-0433-8079

24 Johanna Pattison-Granberg 0000-0002-3979-996X

25 Karl Olsson -

26 Annika Petersson 0000-0002-4582-3567

27

28 **Abstract**

29 *Background:* The recently launched high-throughput assays for the detection of antibodies
30 against SARS-CoV-2 may change the managing strategies for the COVID-19 pandemic. This
31 study aimed at investigating the performance of three high-throughput assays and one rapid
32 lateral flow test relative to the recommended criteria defined by regulatory authorities.

33 *Methods:* A total of 133 samples, including 100 pre-pandemic samples, 20 samples from
34 SARS-CoV-2 RT-PCR positive individuals, and 13 potentially cross-reactive samples were
35 analysed with SARS-CoV-2 IgG (Abbott), Elecsys Anti-SARS-CoV-2 (Roche), LIAISON
36 SARS-CoV-2 S1/S2 IgG (DiaSorin) and 2019-nCoV IgG/IgM Rapid Test (Dynamiker
37 Biotechnology Co).

38 *Results:* All assays performed with a high level of specificity; however, only Abbott reached
39 100% (95% CI 96.3-100). The pre-pandemic samples analysed with Roche, DiaSorin and
40 Dynamiker Biotechnology resulted in two to three false-positive results per method
41 (specificity 96.9-98.0%). Sensitivity differed more between the assays, Roche exhibiting the
42 highest sensitivity (100%, CI 83.9-100). The corresponding figures for Abbott, DiaSorin and
43 Dynamiker Biotechnology were 85.0%, 77.8% and 75.0%, respectively.

44 *Conclusions:* The results of the evaluated SARS-CoV-2 assays vary considerably as well as
45 their ability to fulfil the performance criteria proposed by regulatory authorities. Introduction
46 into clinical use in low-prevalent settings, should therefore, be made with caution.

47

48 **Keywords:** COVID-19, SARS-CoV-2, serology, immunology, antibodies

49

50 **Introduction**

51 Coronavirus disease 2019 (COVID-19) was first reported in Wuhan, Hubei province, China,
52 in December 2019 [1]. The virus causing this disease has since been designated SARS-CoV-2
53 [2]. The clinical manifestations of COVID-19 range from mild or no respiratory symptoms to
54 severe viral pneumonia with a need of intensive care and ventilator support. Due to the rapid
55 dissemination of the infection, the outbreak was declared a pandemic by the World Health
56 Organization (WHO) on 11th March 2020 [3].

57 RT-PCR detection of SARS-CoV-2 in samples primarily obtained from
58 nasopharyngeal and/or pharyngeal swabs is considered gold standard for laboratory
59 confirmation of COVID-19 in patients. However, the presence of viral nucleic acids is
60 transient, and results are dependent on the time of sampling.

61 Detection of antibodies against the SARS-CoV-2 virus could possibly be used to
62 distinguish patients recovered from COVID-19, and several rapid tests based on
63 immunochromatographic techniques have been developed. These point-of-care tests usually
64 deliver results within 15-30 minutes, however the nature of the tests makes large-scale testing
65 inefficient.

66 To achieve high-throughput detection of anti-SARS-CoV-2 antibodies in plasma
67 or serum, several manufacturers have developed immunoassays based on recognition of
68 recombinant antigens. Some tests claim to detect IgM or IgG, while others also identify IgA
69 or a mixture of different classes of antibodies. Differences in test design, including choice of
70 antigen, are likely to affect the sensitivity and specificity of the tests [4]. In this study, the
71 performance of three commercially available high-throughput automated SARS-CoV-2
72 antibody assays, and one rapid immunochromatographic test, was investigated and compared
73 to recommended criteria set by regulatory authorities.

74

75 **Materials and Methods**

76 *Assays*

77 Four commercially available CE marked immunoassays, and their corresponding platforms
78 were used: 1) Abbott SARS-CoV-2 IgG on the ARCHITECT i2000 (Abbott, Illinois, USA);
79 2) Elecsys Anti-SARS-CoV-2 on the Cobas 8000 e801 (Roche Diagnostic Scandinavia AB,
80 Solna, Sweden); 3) LIAISON SARS-CoV-2 S1/S2 IgG on the LIAISON XL (DiaSorin,
81 Saluggia, Italy); and 4) the lateral flow test 2019-nCoV IgG/IgM Rapid Test (Dynamiker
82 Biotechnology Co., Tianjin, China).

83 The Abbott SARS-CoV-2 IgG reagent is based on the recognition of IgG
84 antibodies binding to recombinant SARS-CoV-2 nucleoprotein in a chemiluminescent
85 microparticle immunoassay (CMIA). Results are obtained after 29 minutes, and are reported
86 as an index with a cut-off to distinguish between negative and positive results.

87 The Elecsys Anti-SARS-CoV-2 assay is based on recombinantly produced
88 SARS-CoV-2 nucleocapsid (N) protein and detects antibodies (including IgG). The duration
89 of the analysis is approximately 18 minutes, with results presented as a cut-off index as well
90 as reactive or non-reactive.

91 The LIAISON SARS-CoV-2 S1/S2 detects IgG antibodies recognising the spike
92 glycoprotein of the coronavirus. As for the previous assays, the antigen is composed of
93 recombinant protein expressed in human cell lines. The analysis takes 35 minutes, and the
94 results are expressed as IgG antibody concentrations in arbitrary units (AU/mL) graded
95 negative, equivocal, or positive.

96 The manually performed 2019-nCoV IgG/IgM Rapid Test recognises and
97 differentiates IgG from IgM antibodies; however, information on antigen source is scarce.
98 The test result could be obtained after approximately 10 minutes as visual bands across the
99 assay paper strip, any positive result, either for IgG, IgM, or both, was considered positive.

100 Despite the short reaction time, as compared with the automatic tests, high-throughput
101 analysis of a large number of samples using the manual test procedure is implausible.

102 All automated systems are part of the routine operations in our laboratories and
103 were as such subjected to accepted quality assurance procedures. All tests (including
104 calibration and controls) were performed according to manufacturers' instructions, using
105 serum samples.

106

107 *Sample collections*

108 All samples in the study originated from an existing sample collection at the Microbiology
109 department obtained after consent to deposit, store, and use for research and development.
110 Samples were fully anonymised prior to inclusion, and results could hence not be linked to
111 individuals. As a consequence, the study did not require approval from an ethics committee,
112 according to the guidelines of the Swedish Ethical Review Agency. All serum samples were
113 stored at -20°C until analysis.

114 The specificity of each assay was evaluated using 100 pre-pandemic (2018)
115 samples. To challenge the assays, 13 additional serum samples with possible interferences
116 (antinuclear antibodies (n=2); rheumatoid factor (n=2); anti-cytomegalovirus IgM (n=2); anti-
117 Epstein-Barr virus IgM (n=2) and samples from pregnant donors (n=5)) were analysed.

118 Assay sensitivities were evaluated using 20 outpatient serum samples from 16
119 individuals that prior to serum sampling had tested RT-PCR positive for SARS-CoV-2 from
120 nasopharyngeal and/or pharyngeal swabs. RT-PCR had been performed using primers and
121 probes targeting either the envelope (E) and the polymerase (RdRP) genes of SARS-CoV-2 as
122 described by Corman [5], or the nucleocapsid gene (N) of the virus (Abbott RealTime SARS-
123 CoV-2 Assay, Abbott Molecular Inc., Illinois, USA). The interval between onset of COVID-
124 19 symptoms and serum sample collection ranged from 18 to 52 days (median 38 days).

125 *Calculations*

126 Overall per cent agreement, sensitivity (per cent positive agreement), and specificity (per cent
127 negative agreement) were calculated based on a contingency table according to EP12-A2 [6],
128 using Microsoft Excel 2019 (Microsoft Corp. Redmond, WA, USA). The between-test
129 agreement was evaluated using Cohen's kappa calculated with IBM SPSS Statistics for
130 Windows, Version 26.0 (IBM Corp., Armonk, NY, USA). For each assay, the positive
131 likelihood ratio (LR+) and positive predictive value (PPV) at different prevalence (P)
132 scenarios were calculated according to equation 1 and 2, respectively.

133 $LR+ = sensitivity / (1 - specificity)$ (Eq. 1)

134 $PPV = (sensitivity \times P) / ((sensitivity \times P) + (1 - specificity) \times (1 - P))$ (Eq. 2)

135 Further data analysis, including descriptive statistics, was performed using GraphPad Prism,
136 version 7.04 for Windows (GraphPad Software, La Jolla California USA,
137 www.graphpad.com).

138

139 *Clinical Performance Requirements*

140 The performance of each assay was compared with published guidelines from three regulatory
141 authorities: the Public Health Agency of Sweden (PHAS); Haute Autorité de Santé, France
142 (HAS); and Centres for Disease Control and Prevention, USA (CDC) [7-9]. Their
143 recommended performance criteria are summarized in Table 1.

144 **Results**

145 Of the 100 pre-pandemic samples, nine tested false positive, two with Roche, five with
146 DiaSorin (including two equivocal results) and two with Dynamiker Biotechnology (figure 1).
147 The negative sample collection resulted in median values of 0.09 COI (0.08-3.16), 0.04 S/CO

148 (0.01-0.6) and 5.7 AU/mL (1.9-32.6) for Roche, Abbott and DiaSorin, respectively. The panel
149 consisting of 13 potentially cross-reactive pre-pandemic samples mainly gave negative
150 results. However, for Dynamiker Biotechnology, one sample with rheumatoid factor IgM was
151 positive for both SARS-CoV-2 IgM and IgG. Also, one sample obtained during pregnancy
152 showed an equivocal result on the DiaSorin assay. In contrast, all these samples were negative
153 on the Abbott and Roche assays.

154 Three RT-PCR positive samples gave a weak positive result with Roche, close
155 to the cut-off (1.01 to 1.26, cut-off ≥ 1.0) (Figure 1). These samples were reported as negative
156 by DiaSorin, Dynamiker Biotechnology, and Abbott. However, for these samples, the Abbott
157 values clearly differed from the rest of the Abbott negative samples by being close to the cut-
158 off (0.81-1.06, cut-off ≥ 1.4).

159 The overall agreement was 97.5% for Abbott, 98.3% for Roche, 94.0% for
160 DiaSorin, and 94.2% for Dynamiker Biotechnology. The pairwise inter-assay agreement
161 (Cohen's kappa) was as follows: Roche and Abbott 0.847 (95% CI, 0.718 to 0.976); Roche
162 and Diasorin 0.654 (95% CI, 0.474 to 0.830); Roche and Dynamiker Biotechnology 0.794
163 (95% CI, 0.647 to 0.941); Abbott and DiaSorin 0.777 (95% CI, 0.618 to 0.936); Abbott and
164 Dynamiker Biotechnology 0.804 (95% CI, 0.653 to 0.817); and DiaSorin and Dynamiker
165 Biotechnology 0.724 (95% CI, 0.533 to 0.895).

166 The calculated sensitivity and specificity for each assay is presented in Table 2,
167 together with the corresponding data extracted from each manufacturer's test kit insert. In the
168 present study Abbott exhibited the highest specificity and Roche the highest sensitivity, both
169 being 100%. Two RT-PCR positive samples and two samples from the negative collection
170 were excluded from the DiaSorin sample collection due to equivocal results. The positive

171 likelihood ratios (LR+) were ∞ , 50.0, 25.1 and 37.5 for Abbott, Roche, DiaSorin and
172 Dynamiker Biotechnology, respectively.

173 Benchmarking the sensitivity and specificity data from the current study against
174 published guidelines showed that the Abbott assay met the specificity criteria set by all three
175 regulatory bodies. The specificities of Roche and Dynamiker Biotechnology were both in
176 accordance with the HAS guidelines, while DiaSorin, in contrast, failed to reach any of the
177 specificity criteria. Neither of the assays from Abbott, DiaSorin and Dynamiker
178 Biotechnology exhibited a sufficient sensitivity to meet the criteria set by PHAS and HAS. In
179 contrast, Roche performed excellent in this regard, with a sensitivity of 100%.

180 Assay performance recommendations from PHAS are based on a target PPV of
181 $> 90\%$. To demonstrate the seroprevalence required to reach a PPV of $> 90\%$, the PPV based
182 on sensitivity and specificity data from the present study as well as from the manufacturers,
183 was calculated (Figure 2).

184 **Discussion**

185 As the pandemic progresses, it will likely become increasingly important not only to establish
186 ongoing COVID-19 but also to confirm past infection of SARS-CoV-2. On a community
187 level, this could be used for assessing the progress of the pandemic and for guiding public
188 health and control policies [10]. On an individual level, a reliable method for proving past
189 COVID-19 could potentially be important for allowing employees to remain at work despite
190 mild respiratory symptoms. It could even serve as a basis for a proposed “immunity passport”
191 [11, 12]. Although the degree of immunity to SARS-CoV-2 is disputed, it is plausible that
192 individuals undergoing COVID-19 will gain partial or temporary protection against new
193 episodes [13]. Serology tests might also be used to identify donors of convalescent plasma,
194 which has been proposed for the treatment of seriously ill COVID-19 patients [14].

195 However, the rapidly emerging pandemic limits the possibility of state-of-the-art
196 validations according to the EP-12 A2 [6], and there is no international consensus on clinical
197 performance requirements for COVID-19 assays. Neither is there an agreed gold standard
198 method for antibody testing [15]. Using the performance criteria proposed by PHAS, HAS
199 and CDC [7-9], only Abbott managed to reach the specificity recommended by all three
200 authorities while Roche alone fulfilled the sensitivity criteria (PHAS, HAS).

201 The clinical performance of a qualitative diagnostic test is, with few exceptions,
202 heavily dependent on the prevalence. Both PHAS and CDC accordingly link their respective
203 specificity criteria for SARS-CoV-2 antibody testing to seroprevalence levels. PHAS
204 recommends that a PPV > 90% shall be pursued, regardless of seroprevalence. Based on our
205 results prevalences of approximately 15%, 20% and 25% would be necessary to reach this
206 goal for Roche, Dynamiker Biotechnology and DiaSorin, respectively (Figure 2). In contrast,
207 Abbott would in this regard perform well at any given seroprevalence, owing to its specificity
208 of 100%.

209 Due to the limited sample size of the study, our results need to be interpreted
210 with caution. Nevertheless, a recent study based on 65 RT-PCR positive and 1154 pre-
211 COVID-19 samples [16] reported similar assay performances, except for the sensitivity of
212 Roche being higher in our study. In contrast, evaluating four different assays using the same
213 outpatient sample collection strengthens this study. Moreover, an aspect not investigated in
214 this study is that assay performance could potentially vary with sample type (serum, plasma,
215 whole blood).

216 Judging by the results from this study, introducing broad antibody testing for
217 COVID-19 will be cumbersome in a low-prevalence setting. In order to reach the proposed
218 performance criteria, two-tier testing will have to be considered. Alternatively, a high degree
219 of specificity (and thus a high positive predictive value) could be prioritised using modified

220 cut-off values. Our results suggest that this could be conceivable for the Abbott and Roche
221 assays, while the more narrowly distributed results for DiaSorin would make it difficult to
222 find such a specific cut-off with a reasonably preserved degree of sensitivity (Figure 1).

223 Considering the novelty of the disease, and hence the expedited development of
224 new assays, possible sources of systematic errors (e.g. cross-reacting antibodies against other
225 *Coronaviridae*) need to be carefully considered. In this study, all eleven false-positive
226 samples originated from unique donors, none of the samples being positive in more than one
227 assay. Further investigation of possible reasons for the false-positive results is, however,
228 beyond the scope of this evaluation.

229 We conclude that the SARS-CoV-2 assays only partly fulfil the performance
230 criteria proposed by regulatory authorities. Introduction into clinical use in low-prevalent
231 settings, must therefore, be made with careful consideration and well-informed stakeholders.

232

233 **Acknowledgements**

234 The expert technical assistance of Ola Forsell and Susanna Bergqvist at the Department of
235 Clinical Chemistry and Transfusion Medicine, Växjö Central Hospital, and of Sanna
236 Hjalmarsson, Christina Bojesson and Eline Boesen at the Department of Clinical
237 Microbiology, Region Kronoberg, is greatly appreciated.

238

239 **Declaration of interest statement:** The authors declare that they have no conflicts of interest
240 relevant to the manuscript submitted to Infectious Diseases. There is no funding to report.

241

242 **References**

- 243 [1] N. Zhu, D. Zhang, W. Wang, X. Li, B. Yang, J. Song, X. Zhao, B. Huang, W. Shi, R. Lu, P. Niu,
244 F. Zhan, X. Ma, D. Wang, W. Xu, G. Wu, G.F. Gao, W. Tan, I. China Novel Coronavirus, T.
245 Research, A Novel Coronavirus from Patients with Pneumonia in China, 2019, N Engl J Med 382(8)
246 (2020) 727-733.
- 247 [2] A.E. Gorbalenya, S.C. Baker, R.S. Baric, R.J. De Groot, C. Drosten, A.A. Gulyaeva, B.L.
248 Haagmans, C. Lauber, A.M. Leontovich, B.W. Neuman, D. Penzar, S. Perlman, L.L.M. Poon, D.
249 Samborskiy, I.A. Sidorov, I. Sola, J. Ziebuhr, Severe acute respiratory syndrome-related coronavirus:
250 The species and its viruses – a statement of the Coronavirus Study Group, Cold Spring Harbor
251 Laboratory, 2020.
- 252 [3] WHO, Virtual press conference on COVID-19–11 March 2020.
253 <[https://www.who.int/docs/default-source/coronaviruse/transcripts/who-audio-emergencies-](https://www.who.int/docs/default-source/coronaviruse/transcripts/who-audio-emergencies-coronavirus-press-conference-full-and-final-11mar2020.pdf?sfvrsn=cb432bb3_2)
254 [coronavirus-press-conference-full-and-final-11mar2020.pdf?sfvrsn=cb432bb3_2](https://www.who.int/docs/default-source/coronaviruse/transcripts/who-audio-emergencies-coronavirus-press-conference-full-and-final-11mar2020.pdf?sfvrsn=cb432bb3_2)>, 2020 (accessed 6th
255 May.2020).
- 256 [4] Z. Zainol Rashid, S.N. Othman, M.N. Abdul Samat, U.K. Ali, K.K. Wong, Diagnostic
257 performance of COVID-19 serology assays, Malays J Pathol 42(1) (2020) 13-21.
- 258 [5] V.M. Corman, O. Landt, M. Kaiser, R. Molenkamp, A. Meijer, D.K. Chu, T. Bleicker, S. Brunink,
259 J. Schneider, M.L. Schmidt, D.G. Mulders, B.L. Haagmans, B. van der Veer, S. van den Brink, L.
260 Wijsman, G. Goderski, J.L. Romette, J. Ellis, M. Zambon, M. Peiris, H. Goossens, C. Reusken, M.P.
261 Koopmans, C. Drosten, Detection of 2019 novel coronavirus (2019-nCoV) by real-time RT-PCR,
262 Euro Surveill 25(3) (2020).
- 263 [6] P.E. Garrett, F.D. Lasky, K.L. Meier, L.W. Clark, Clinical and Laboratory Standards Institute.,
264 User protocol for evaluation of qualitative test performance : approved guideline, 2nd ed., Clinical and
265 Laboratory Standards Institute, Wayne, Pa., 2008.
- 266 [7] Folkhälsomyndigheten (Public Health Agency of Sweden), Vägledning för antikroppspåvisning.
267 <[https://www.folkhalsomyndigheten.se/contentassets/2c3d8e40926e4bcc942aa640922bb758/vagledning-](https://www.folkhalsomyndigheten.se/contentassets/2c3d8e40926e4bcc942aa640922bb758/vagledning-antikroppspavising.pdf)
268 [ng-antikroppspavising.pdf](https://www.folkhalsomyndigheten.se/contentassets/2c3d8e40926e4bcc942aa640922bb758/vagledning-antikroppspavising.pdf)>, 2020 (accessed 3 Jul.2020).

- 269 [8] Haute Autorité de Santé, Specifications setting out the performance assessment methods
270 applicable to serological tests detecting anti-SARS-CoV-2 antibodies. <[https://www.has-](https://www.has-sante.fr/upload/docs/application/pdf/2020-05/has_serological_tests_covid19_specifications.pdf)
271 [sante.fr/upload/docs/application/pdf/2020-05/has_serological_tests_covid19_specifications.pdf](https://www.has-sante.fr/upload/docs/application/pdf/2020-05/has_serological_tests_covid19_specifications.pdf)>, 2020
272 (accessed Jul 31.2020).
- 273 [9] Centers for Disease Control and Prevention, Interim Guidelines for COVID-19 Antibody Testing;
274 Interim Guidelines for COVID-19 Antibody Testing in Clinical and Public Health Settings.
275 <<https://www.cdc.gov/coronavirus/2019-ncov/lab/resources/antibody-tests-guidelines.html>>, 2020
276 (accessed Jul 31.2020).
- 277 [10] S.E.F. Yong, D.E. Anderson, W.E. Wei, J. Pang, W.N. Chia, C.W. Tan, Y.L. Teoh, P.
278 Rajendram, M. Toh, C. Poh, V.T.J. Koh, J. Lum, N.M. Suhaimi, P.Y. Chia, M.I. Chen, S. Vasoo, B.
279 Ong, Y.S. Leo, L. Wang, V.J.M. Lee, Connecting clusters of COVID-19: an epidemiological and
280 serological investigation, *Lancet Infect Dis* (2020).
- 281 [11] A.L. Phelan, COVID-19 immunity passports and vaccination certificates: scientific, equitable,
282 and legal challenges, *Lancet* (2020).
- 283 [12] N.J. Beeching, T.E. Fletcher, M.B.J. Beadsworth, Covid-19: testing times, *BMJ* 369 (2020)
284 m1403.
- 285 [13] L. Bao, W. Deng, H. Gao, C. Xiao, J. Liu, J. Xue, Q. Lv, J. Liu, P. Yu, Y. Xu, F. Qi, Y. Qu, F. Li,
286 Z. Xiang, H. Yu, S. Gong, M. Liu, G. Wang, S. Wang, Z. Song, W. Zhao, Y. Han, L. Zhao, X. Liu, Q.
287 Wei, C. Qin, Reinfection could not occur in SARS-CoV-2 infected rhesus macaques, *bioRxiv* (2020)
288 2020.03.13.990226.
- 289 [14] R. Rubin, Testing an Old Therapy Against a New Disease: Convalescent Plasma for COVID-19,
290 *JAMA* (2020).
- 291 [15] European Commission, Guidelines on COVID-19 in vitro diagnostic tests and their performance
292 (2020/C 122 I/01) <[https://eur-lex.europa.eu/legal-](https://eur-lex.europa.eu/legal-content/EN/TXT/PDF/?uri=OJ:C:2020:122I:FULL&from=SV)
293 [content/EN/TXT/PDF/?uri=OJ:C:2020:122I:FULL&from=SV](https://eur-lex.europa.eu/legal-content/EN/TXT/PDF/?uri=OJ:C:2020:122I:FULL&from=SV)>, 2020 (accessed Aug. 4.2020).
- 294 [16] T. Perkmann, N. Perkmann-Nagele, M.-K. Breyer, R. Breyer-Kohansal, O.C. Burghuber, S. Hartl,
295 D. Aletaha, D. Sieghart, P. Quehenberger, R. Marculescu, P. Mucher, R. Strassl, O.F. Wagner, C.J.

296 Binder, H. Haslacher, Side by side comparison of three fully automated SARS-CoV-2 antibody assays
297 with a focus on specificity, medRxiv (2020) 2020.06.04.20117911.

298

299 Table 1. Summary of recommended criteria for SARS-CoV-2 serology assays issued by authorities in three different countries.

Regulatory Authority	Sensitivity (%)	Specificity (%)	Additional comment
Public Health Agency of Sweden	90.0	99.5	Recommendations based on a seroprevalence of 5%, rendering a target PPV of > 90%
Haute Autorité de Santé, France	95.0	98.0	
Centers for Disease Control and Prevention, USA	-	99.5	For populations with seroprevalence of $\geq 5\%$

300

301

302

303

304

305

306

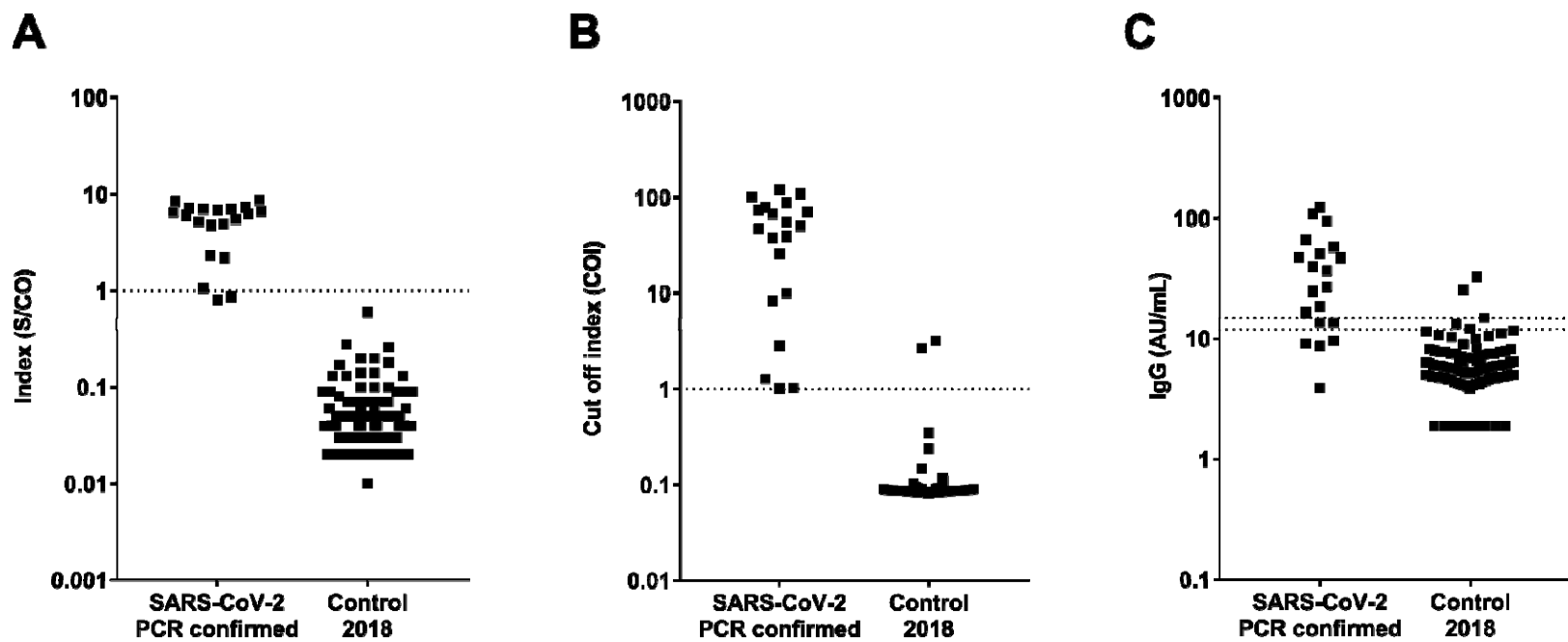
307 Table 2. Sensitivity and specificity from this study, and according to the manufacturers' data. The results are compared to manufacturers' data
 308 from samples collected >14 days (Abbott, Roche) and >15 days (DiaSorin) post PCR confirmation. No information about time of sampling was
 309 available for Dynamiker Biotechnology.

	Study Data				Manufacturer's Data*			
	n	Sensitivity % (95% CI)	n	Specificity % (95% CI)	n	Sensitivity (95% CI)	n	Specificity (95% CI)
Abbott	20	85.0 (64.0-94.8)	100	100 (96.3-100)	73	100 (95.1-100)	997	99.6 (99.0-99.9)
Roche	20	100 (83.9-100)	100	98.0 (93.0-99.5)	185	99.5 (97.0-100)	6305	99.8 (99.7-99.9)
DiaSorin	18	77.8 (54.8-91.0)	98	96.9 (91.4-99.0)	39	97.4 (86.8-99.5)	90	98.9 (94.0-99.8)
Dynamiker	20	75.0 (53.1-88.8)	100	98.0 (93.0-99.5)	162	93.2 (not reported)	300	95.3 (not reported)

310 * Data retrieved from following versions of product kit inserts: Abbott 06R86 G90418R01, April 2020; Roche V3, 2020-06; DiaSorin 200/007-797, 03, 2020-04; Dynamiker
 311 Biotechnology DNK-1419-1.

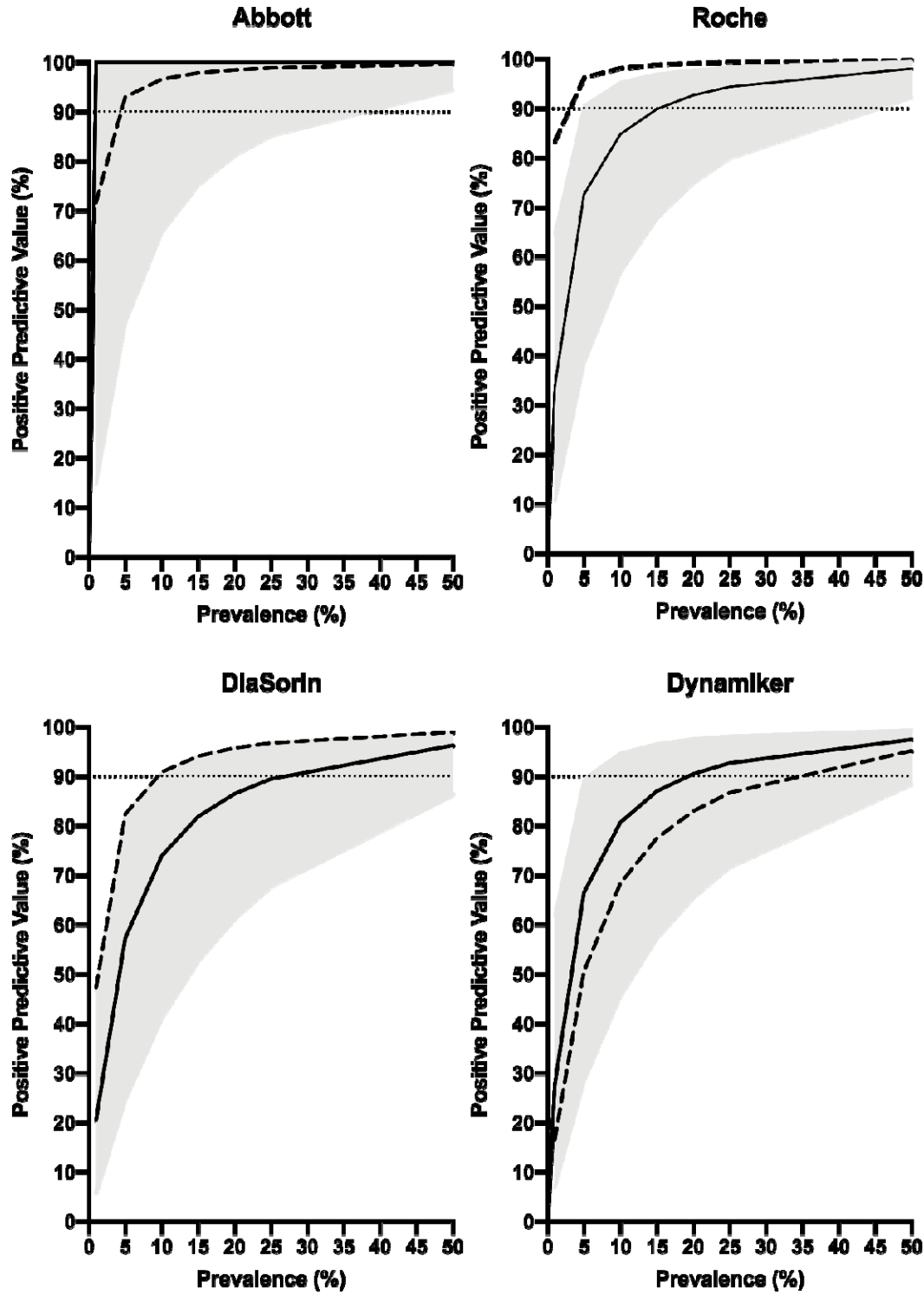
312

313



314

315 Figure 1.



316

317 Figure 2.

318 **Figure captions**

319 Figure 1. Differences in distribution patterns between Abbott, Roche and DiaSorin immunoassays for
320 detection of SARS-CoV-2 antibodies. Measured values from serology testing of 20 positive (SARS-
321 CoV-2 PCR confirmed) and 100 negative (pre-pandemic 2018) samples. Dotted lines represent cut-off
322 values of A) Abbott: positive result index ≥ 1.4 S/CO, B) Roche: positive cut-off index (COI) ≥ 1.0 ,
323 and C) DiaSorin: positive cut-off ≥ 15 AU/mL and equivocal 12-15 AU/mL. In C negative samples
324 with signals below detection limit (3.8 AU/ml) were plotted as 1.9 AU/mL.

325

326 Figure 2. Estimated PPV for the depicted assays, calculated at seroprevalences of 1%, 5%, 10%, 15%,
327 20%, 25% and 50%. Calculations were based on sensitivity, specificity and their respective 95% CI
328 limits from the current investigation (solid lines = mean values; grey areas = 95% CI). Dashed lines
329 represent mean sensitivity and specificity data from the manufacturers' kit inserts. Dotted horizontal
330 lines refer to 90% PPV.

331

332

333

334

335

336