

1 **Transmission dynamics and control of COVID-19 in Chile, March-June, 2020**

2

3 Amna Tariq<sup>1\*</sup>, Eduardo A. Undurraga<sup>2,3</sup>, Carla Castillo Laborde<sup>4</sup>, Katia Vogt-Geisse<sup>5</sup>, Ruiyan Luo<sup>1</sup>,  
4 Richard Rothenberg<sup>1</sup>, Gerardo Chowell<sup>1</sup>

5

6 1 Department of Population Health Sciences, School of Public Health, Georgia State University, Atlanta,  
7 GA, USA

8 2 Escuela de Gobierno, Pontificia Universidad Católica de Chile

9 3 Millennium Initiative for Collaborative Research in Bacterial Resistance (MICROB-R), Chile

10 4 Centro de Epidemiología y Políticas de Salud, Facultad de Medicina, Clínica Alemana Universidad del  
11 Desarrollo, Santiago, Chile

12 5 Facultad de Ingeniería y Ciencias, Universidad Adolfo Ibáñez, Santiago, Chile

13

14 \* Correspondence: Amna Tariq, Department of Population Health Sciences, Georgia State University  
15 School of Public Health, Atlanta, GA, 30303, atariq1@student.gsu.edu; Tel.: 470-985-6352

16

17

18

19

20

21

22

23

24

25

26 **Abstract**

27 Since the detection of first case of COVID-19 in Chile on March 3<sup>rd</sup>, 2020, a total of 301019 cases including  
28 6434 deaths have been reported in Chile as of July 7<sup>th</sup>, 2020. In this manuscript we estimate the  
29 reproduction number during the early transmission phase in Chile and study the effectiveness of control  
30 interventions by conducting short-term forecasts based on the early transmission dynamics of COVID-19.  
31 We also estimate the reproduction number and conduct short term forecasts for the most recent  
32 developments in the epidemic trajectory of COVID-19 in Chile (May 9<sup>th</sup>-July 7<sup>th</sup>, 2020) to study the  
33 effectiveness of re-imposition of lockdowns in the country. The incidence curve in Chile displays early sub-  
34 exponential growth dynamics with the scaling of growth parameter,  $p$ , estimated at 0.8 (95% CI: 0.7, 0.8)  
35 and the reproduction number, estimated at 1.8 (95% CI: 1.6, 1.9). Our analysis emphasizes that the control  
36 measures at the start of the epidemic significantly slowed down the spread of the virus. However, easing of  
37 the COVID-19 restrictions and spread of virus to the low income neighborhoods in May led to a new wave  
38 of infections, followed by the re-imposition of lockdowns in Santiago and other municipalities. These  
39 measures have decelerated the virus spread with  $R$  estimated at  $\sim 0.87$  (95% CI: 0.84, 0.89) as of July 7<sup>th</sup>,  
40 2020. Our current findings point that the sustained transmission of SARS-CoV-2 in Chile is being brought  
41 under control. The COVID-19 epidemic followed an early sub-exponential growth trend ( $p \sim 0.8$ ) that  
42 transformed into a linear growth trend ( $p \sim 0.5$ ) as of July 7<sup>th</sup>, 2020. While the broad scale social distancing  
43 interventions have slowed the virus spread, the number of new COVID-19 cases continue to accrue,  
44 underscoring the need for persistent social distancing and active case detection and isolation efforts to bring  
45 epidemic under control.

46

47 **Author summary**

48 In context of the ongoing COVID-19 pandemic, Chile is one of the hardest hit countries in Latin America,  
49 struggling to contain the spread of the virus. In this manuscript we employ renewal equation to estimate the  
50 reproduction number for the early ascending phase of the COVID-19 epidemic and the most recent time

51 period to guide the magnitude and intensity of the interventions required to combat the COVID-19  
52 epidemic. We also generate short terms forecasts based on the epidemic trajectory using phenomenological  
53 models and assess counterfactual scenarios to understand any additional resources required to contain the  
54 spread of virus. Our results indicate early sustained transmission of SARS-CoV-2. However, the initial  
55 control measures at the start of the epidemic significantly slowed down the spread of the virus whose effect  
56 is visible two weeks after the implementation of interventions. Easing of the COVID-19 restrictions in May  
57 led to a new wave of infections, followed by the re-imposition of lockdowns in Santiago and other  
58 municipalities. While the broad scale social distancing interventions have slowed the most recent spread of  
59 the virus spread, the number of new COVID-19 cases continue to accrue, underscoring the need for  
60 persistent social distancing efforts to bring epidemic under control.

61

62

63

64

65

66

67

68

69

70

71

72

73

74

75

## 76 **Introduction**

77 The coronavirus disease 2019 (COVID-19) caused by severe acute respiratory syndrome coronavirus 2  
78 (SARS-CoV-2) was declared a global pandemic by the World Health Organization (WHO) on March 11<sup>th</sup>,  
79 2020 [1]. This highly contagious unprecedented virus has impacted government and public institutions,  
80 strained the health care systems, restricted people in their homes and caused country-wide lock downs  
81 resulting in a global economic crisis. Moreover, as of July 7<sup>th</sup>, 2020, more than 11.5 million COVID-19  
82 cases in 213 countries and territories have been reported, including more than 530,000 deaths [2]. The  
83 social, economic and psychological impact of this pandemic on much of the world's population is profound  
84 [3].

85  
86 Soon after its initial rapid spread in China, the first case of novel coronavirus beyond China was reported  
87 in Thailand on January 13<sup>th</sup>, 2020 [4]. The first case in the USA was not identified until January 20<sup>th</sup>, 2020  
88 followed by the detection of the first cases in the European territory on January 24<sup>th</sup>, 2020 [5, 6]. The  
89 COVID-19 pandemic has since spread to every continent except the Antarctica. While some countries like  
90 New Zealand, and the Republic of Korea have steadily suppressed the COVID-19 spread , reporting < 70  
91 cases per day as of July 7<sup>th</sup>, 2020, other countries like Brazil, India and the USA still struggle to contain the  
92 increasing number of cases [7]. Subsequently, considerable COVID-19 outbreaks have occurred in Latin  
93 America since late February 2020, with 1603055 cases reported in Brazil, followed by 302718 cases in Peru  
94 and 301019 cases in Chile as of July 7<sup>th</sup>, 2020 [7, 8]. The first case of SARS-CoV-2 in Chile was identified  
95 on March 3<sup>rd</sup>, 2020. While the initial cases were imported from Southeast Asia and Europe, the COVID-19  
96 case counts have expanded in this country, placing Chile in phase 4 of the pandemic on March 25<sup>th</sup>, 2020  
97 [9, 10].

98  
99 Chile is the fifth country in Latin America after Brazil, Mexico, Ecuador and Argentina to report COVID-  
100 19 cases. The first six imported cases were reported in the city of Talca and the capital of Chile, Santiago

101 [10]. However, since the early phase of the outbreak, Chile has employed an agile public health response  
102 by announcing a ban on large public health gatherings of more than 500 people on March 13<sup>th</sup>, 2020 when  
103 the nationwide cumulative case count reached 44 reported cases [11]. Moreover, the Chilean government  
104 announced the closure of all day cares, schools and universities on March 16<sup>th</sup>, 2020. This was followed by  
105 the announcement to close country borders on March 18<sup>th</sup>, 2020, and the declaration of national emergency  
106 on the same date, which was accompanied with several concrete interventions to further contain the  
107 outbreak in the region [12]. In particular, these included a night time curfew in Chile starting on March  
108 22<sup>nd</sup>, 2020, and small-area lockdowns (i.e., intermittent lockdowns at the municipality level depending on  
109 total cases and case growth) starting on March 28<sup>th</sup>, 2020 in two municipalities in Southern Chile and seven  
110 municipalities in Santiago [13]. These initial containment strategies kept the COVID-19 case counts lower  
111 than regional peers; Brazil, Peru and Ecuador until the end of April, 2020. However, the government started  
112 to ease the COVID-19 restrictions in early May by reopening the economy under the “Safe Return” plan,  
113 including televised opening of some businesses and stores, as new infections had reduced between 350-500  
114 per day by the end of April, implying an only apparent flattening of the COVID-19 curve [14-16].  
115 Moreover, the approach of imposing and lifting the small-area lockdowns by area proved unsuccessful,  
116 resulting in a new wave of infections; with the virus spreading from more affluent areas of Chile to poorer,  
117 more crowded communities, forcing the government to reimpose lockdown measures in Santiago in mid-  
118 May [17]. The case counts have since continued to increase averaging ~4943 cases per day in June 2020.  
119 Thus far, Chile has accumulated a total of 301019 reported cases including 6434 deaths as of July 7<sup>th</sup>, 2020.  
120 The majority (~77%) of COVID-19 cases are concentrated in Chile’s capital, Santiago, with 231171  
121 reported cases, followed by Valparaiso (13433) in coastal central Chile, and Antofagasta in Northern Chile  
122 (10594) [18]. However, the crude case fatality rate in Chile (2.1%) remains below the global average (4.6%)  
123 [7, 19].

124

125 In this study we estimate the transmission potential of COVID-19, including the effective reproduction  
126 number,  $R$ , during the early transmission phase of the COVID-19 epidemic in Chile that can guide the

127 magnitude and intensity of control interventions to combat the epidemic [20, 21]. We can also study the  
128 effectiveness of control interventions in Chile (see Table 1) on the transmission rate by conducting short-  
129 term forecasts calibrated using the early trajectory of the epidemic [22]. We also generate the reproduction  
130 number and timely short term forecasts from the COVID-19 reported cases for the most recent time period,  
131 as of July 7<sup>th</sup>, 2020, to anticipate any additional resources required to combat the growing epidemic in Chile.

132

133 Table 1: Timeline of the implementation of the social distancing interventions in Chile as of July 7<sup>th</sup>, 2020.

134

## 135 **Methods**

### 136 **COVID-19 incidence and testing data**

137 We obtained updates on the daily series of COVID-19 cases as of July 7<sup>th</sup>, 2020 from the publicly available  
138 data from the GitHub repository created by the government of Chile [8]. Incidence case data by the date of  
139 reporting, confirmed by PCR (polymerase chain reaction) tests from March 3<sup>rd</sup>–July 7<sup>th</sup>, 2020 were  
140 analyzed. The daily testing and positivity rates available from April 9<sup>th</sup>–July 7<sup>th</sup>, 2020 were also analyzed.

141

### 142 **Generalized growth model (GGM)**

143 We generate short term forecasts using the generalized growth model (GGM) that characterizes the early  
144 ascending phase of the epidemic by estimating two parameters: (1) the intrinsic growth rate,  $r$ ; and (2) a  
145 dimensionless “deceleration of growth” parameter,  $p$ . This model allows to capture a range of epidemic  
146 growth profiles by modulating parameter  $p$ . The GGM model is given by the following differential  
147 equation:

$$148 \quad \frac{dC(t)}{dt} = C'(t) = rC(t)^p$$

149 In this equation  $C'(t)$  describes the incidence curve over time  $t$ ,  $C(t)$  describes the cumulative number of  
150 cases at time  $t$  and  $p \in [0,1]$  is a “deceleration of growth” parameter. This equation becomes constant

151 incidence over time if  $p=0$  and an exponential growth model for cumulative cases if  $p =1$ . Whereas if  $p$  is  
152 in the range  $0 < p < 1$ , then the model indicates sub-exponential growth dynamics [23, 24].

153

#### 154 **Generalized logistic growth model (GLM)**

155 The generalized logistic growth model (GLM) is an extension of the simple logistic growth model that  
156 allows capture of a range of epidemic growth profiles including sub-exponential (polynomial) and  
157 exponential growth dynamics. GLM characterizes epidemic growth by estimating (i) the intrinsic growth  
158 rate,  $r$  (ii) a dimensionless “deceleration of growth” parameter,  $p$  and (iii) the final epidemic size,  $k_0$ . The  
159 deceleration parameter modulates the epidemic growth patterns including the sub-exponential growth ( $0 <$   
160  $p < 1$ ), constant incidence ( $p = 0$ ) and exponential growth dynamics ( $p = 1$ ). The GLM model is given by the  
161 following differential equation:

$$162 \quad \frac{dC(t)}{dt} = rC^p(t)\left(1 - \frac{C(t)}{k_0}\right)$$

163 Where  $\frac{dC(t)}{dt}$  describes the incidence over time  $t$  and the cumulative number of cases at time  $t$  is given by  
164  $C(t)$  [22].

165

#### 166 **Calibration of the GGM and GLM model**

167 We calibrate the GGM and the GLM model to the daily incidence curve by dates of reporting in Chile using  
168 time series data that is available from March 3<sup>rd</sup>–March 30<sup>th</sup>, 2020 and from May 9<sup>th</sup> – July 7<sup>th</sup>, 2020 ,  
169 respectively.

170

171 Model parameters are estimated by a non-linear least square fitting of model solution to the incidence data  
172 by the date of reporting. This is achieved by searching for the set of model parameters  $\hat{\Theta} = (\hat{\Theta}_1, \hat{\Theta}_2, \dots, \hat{\Theta}_m)$   
173 that minimizes the sum of squared differences between the observed data  $y_{ti} = y_{t1}, y_{t2}, \dots, y_{tn}$  and the  
174 corresponding mean incidence curve given by  $f(t_i, \hat{\Theta}) = C'(t)$  : where  $\hat{\Theta} = (r, p)$  corresponds to the set

175 of parameters of the GGM model and  $\hat{\Theta} = (r, p, k_0)$  to the set of parameters of the GLM model. In both  
176 cases, the objective function for the best fit solution of  $f(t_i, \hat{\Theta})$  is given by :

177

$$178 \quad \hat{\Theta} = \arg \min \sum_{i=1}^n (f(t_i, \Theta) - y_{t_i})^2$$

179

180 where  $t_i$  is the time stamp at which the time series data are observed and  $n$  is the total number of data points  
181 available for inference. The initial condition is fixed to the first observation in the data set. This way,  
182  $f(t_i, \hat{\Theta})$  gives the best fit to the time series data  $y_{t_i}$ . Next, we utilize a parametric bootstrapping approach  
183 assuming negative binomial error structure for the GGM and GLM model to derive uncertainty in the  
184 parameters obtained by non-linear least square fit of the data as previously described [23, 25]. The variance  
185 is assumed to be 3 times the mean for GGM and 96 times of the mean for the GLM. The model confidence  
186 intervals of parameters and the 95% prediction intervals of model fit are also obtained using the parametric  
187 bootstrap approach [23].

188

### 189 **Reproduction number, $R$ , from case incidence using GGM**

190 The reproduction number,  $R$ , is defined as the average number of secondary cases generated by a primary  
191 case at time  $t$  during the outbreak. This is a crucial quantity to identify the intensity of interventions required  
192 to contain an epidemic [26-28]. Estimates of effective  $R$  indicate if the disease transmission continues ( $R > 1$ )  
193 or if the active disease transmission ceases ( $R < 1$ ). Therefore, in order to contain an outbreak, we need to  
194 maintain  $R < 1$ . We estimate the reproduction number by calibrating the GGM to the early growth phase of  
195 the epidemic (27 days) [24]. We model the generation interval of SARS-CoV-2 assuming gamma  
196 distribution with a mean of 5.2 days and a standard deviation of 1.72 days [29]. We estimate the growth  
197 rate parameter,  $r$ , and the deceleration of growth parameter,  $p$ , as described above. Then we simulate the  
198 progression of local incidence cases  $I_i$  at calendar time  $t_i$ , from the calibrated GGM model and apply the



199 discretized probability distribution of the generation interval denoted by  $\rho_i$  to the renewal equation to  
200 estimate the reproduction number [20, 21, 30]:

201

$$202 \quad R_{t_i} = \frac{I_i}{\sum_{j=0}^i (I_{i-j} \rho_j)}$$

203

204 The numerator represents the total new cases  $I_i$ , and the denominator represents the total number of cases  
205 that contribute to generating the new cases  $I_i$  at time  $t_i$ . This way,  $R_{t_i}$ , represents the average number of  
206 secondary cases generated by a single case at time  $t$ . Next, we derive the uncertainty bounds around the  
207 curve of  $R_t$  directly from the uncertainty associated with the parameter estimates  $(r, p)$ . We estimate  $R_t$  for  
208 300 simulated curves assuming a negative binomial error structure where variance is assumed to be 3 times  
209 the mean [23].

210

### 211 **Reproduction number, $R$ , from case incidence using GLM**

212 We also estimate the most recent reproduction number by calibrating the GLM from May 9<sup>th</sup> – July 7<sup>th</sup>,  
213 2020 [24]. Next we model the generation interval [29], estimate the model parameters  $(r, p, k_0)$  from GLM  
214 model and the reproduction number from the renewal equation as described above [20, 21, 30]. The  
215 uncertainty bounds around the curve of  $R_t$  are derived directly from the uncertainty associated with the  
216 parameter estimates  $(r, p, k_0)$ . We estimate  $R_t$  for 300 simulated curves assuming a negative binomial error  
217 structure [23] where the variance is assumed to be 96 times of the mean calculated by averaging mean to  
218 variance ratio calculated from the data (by binning data points and calculating directly from the data itself).

219

## 220 **3. Results**

### 221 **Case incidence data**

222 A total of 301019 cases were reported by the Ministry of Health Chile as of July 7<sup>th</sup>, 2020 [8]. On average  
223 ~443 (SD: 133.6) new cases per day were reported in April 2020, ~2697 (SD:1342) new cases per day were  
224 reported in May 2020, ~4943 (SD:972.2) new cases per day were reported in June 2020 and ~3163 (SD:570)  
225 new cases per day have been reported from July 1<sup>st</sup>-7<sup>th</sup>, 2020. Figure 1 shows the daily incidence data of all  
226 confirmed cases in Chile as of July 7<sup>th</sup>, 2020.

227

228 Figure 1: Daily incidence curve for all COVID-19 confirmed cases in Chile as of July 7<sup>th</sup>, 2020 (9).

229

### 230 **Initial growth dynamics and estimate of the reproduction number using GGM**

231 We estimate the reproduction number for the first 27 epidemic days incorporating the effects of the social  
232 distancing interventions as explained in Table 1. The incidence curve displays sub-exponential growth  
233 dynamics with the scaling of growth parameter,  $p$ , estimated at 0.77 (95% CI: 0.73, 0.81) and the intrinsic  
234 growth rate,  $r$ , estimated at 0.81 (95% CI: 0.67, 1.0). The reproduction number for the early transmission  
235 phase was estimated at 1.8 (95% CI: 1.6, 1.9) (Figure 2).

236

237 Figure 2 : Reproduction number with 95% CI estimated using the GGM model. The estimated reproduction  
238 number of the COVID-19 epidemic in Chile as of March 28<sup>th</sup>, 2020 is 1.8 (95% CI: 1.6, 1.9).

239

### 240 **Recent growth dynamics and estimate of reproduction number using GLM**

241 We also estimate the reproduction number from May 9<sup>th</sup>- July 7<sup>th</sup>, 2020 incorporating the effects of the  
242 reimplementations of lockdowns in Santiago, Antofagasta and Valparaíso. The incidence curve displays  
243 nearly linear growth trend with the scaling of growth parameter,  $p$ , estimated at 0.51 (95% CI: 0.47, 0.56),  
244 the intrinsic growth rate,  $r$ , estimated at 22 (95% CI: 13, 31) and the final epidemic size,  $k_0$ , estimated at  
245  $3.4 \times 10^5$  (95% CI:  $3.1 \times 10^5$ ,  $3.7 \times 10^5$ ). The reproduction number was estimated at 0.87 (95% CI: 0.84,  
246 0.89) as of July 7<sup>th</sup>, 2020 (Figure 3).

247

248 Figure 3 : Reproduction number with 95% CI estimated by calibrating the GLM model from May 9<sup>th</sup>-July  
249 7<sup>th</sup>, 2020. The estimated reproduction number of the COVID-19 epidemic in Chile as of July 7<sup>th</sup>, 2020 is,  
250 0.87 (95% CI: 0.84, 0.89).

251

### 252 **Assessing the impact of social distancing interventions**

253 To assess the impact of social distancing interventions in Chile given in Table 1, we generated a 20-day  
254 ahead forecast for Chile based on the daily incidence curve until March 30<sup>th</sup>, 2020. The 28-day calibration  
255 period of the GGM model yields an estimated growth rate,  $r$ , at 0.8 ( 95% CI: 0.6, 1.0) and a scaling of  
256 growth rate parameter,  $p$ , at 0.8 (95% CI: 0.7, 0.8). The 20-day ahead forecast suggested that the early social  
257 distancing measures significantly slowed down the early spread of the virus in Chile, whose effect is  
258 noticeable about two weeks after the implementation of an intervention as shown in Figure 4. A case  
259 resurgence was observed in Chile in mid-May 2020. As a consequence of this case resurgence a total  
260 lockdown was imposed in Santiago (representing ~77% of total COVID-19 cases) on May 15<sup>th</sup>, 2020, which  
261 is still in place [12]. We generated a 20-day ahead forecast based on daily incidence curve from May 9<sup>th</sup>-  
262 July 7<sup>th</sup>, 2020. The 60 day calibration of the GLM model yields an estimated scaling of the growth  
263 parameter,  $p$ , at 0.52 (95% CI: 0.47, 0.57) representing an almost linear growth pattern. The 20-day ahead  
264 average forecast utilizing the GLM model shows that Chile will accumulate ~46677 cases (95% PI: 28746-  
265 70071) within next 20-days (Figure 5).

266

267 Figure 4: 20-days ahead forecast of the COVID-19 epidemic in Chile by calibrating the GGM model until  
268 March 30<sup>th</sup>, 2020. Blue circles correspond to the data points, the red solid line indicates the best model fit  
269 and the red dashed lines represent the 95% prediction interval. The vertical black dashed line represents the  
270 time of the start of the forecast period.

271

272 Figure 5: 20-days ahead forecast of the COVID-19 epidemic in Chile by calibrating the GLM model from  
273 May 9<sup>th</sup>-July 7<sup>th</sup>, 2020. Blue circles correspond to the data points, the red solid line indicates the best model

274 fit and the red dashed lines represent the 95% prediction interval. The vertical black dashed line represents  
275 the time of the start of the forecast period.

276

#### 277 **COVID-19 Testing rates and positivity rate**

278 Daily testing and positivity rates for the time period April 9<sup>th</sup>–July 7<sup>th</sup>, 2020 by the date of reporting are  
279 shown in Figure 6. The total number of tests performed for this time period were 1 149 770, amongst which  
280 263 995 had positive results. The average number of tests performed daily was estimated at ~5460 for April  
281 2020 and ~12959 for May 2020, a 137% increase. The testing rate in Chile further increased in June 2020,  
282 testing on average ~17578 individuals per day. The positivity rate (percentage of positive tests among the  
283 total number of tests) has fluctuated from an average of ~9.07% (SD: 2.3) in April 2020 to an average of  
284 ~28.3% (SD: 4.9) in June 2020.

285

286 Figure 6: Laboratory results for the COVID-19 tests conducted in Chile as of July 7<sup>th</sup>, 2020. Blue color  
287 represents the negative test results and the yellow color represents the positive test results. The orange solid  
288 line represents the positivity rate of COVID-19 in Chile.

289

#### 290 **4. Discussion**

291 The estimates of the early transmission potential in Chile for the first 27 days of the epidemic indicates  
292 sustained local transmission in the country with the estimate of reproduction number  $R$  at ~1.8 (95% CI:  
293 1.6, 1.9) which is in accordance with the estimates of the reproduction numbers retrieved from studies  
294 conducted in China, Brazil, Korea, Peru, South Africa and Iran that lie in the range of 1.5-7.1 [31-40]. In  
295 contrast, even lower estimates of  $R$  ( $R < 1$ ) that have been reported in Singapore and Australia can be  
296 correlated with the implementation of early strict social distancing interventions in these countries [41, 42].

297

298 The initial scaling of the growth parameter in Chile indicates a sub-exponential growth pattern ( $p \sim 0.8$ ),  
299 consistent with sub-exponential growth patterns of COVID-19 that have been observed in Singapore  
300 ( $p \sim 0.7$ ), Korea ( $p \sim 0.76$ ) and other Chinese provinces excluding Hubei ( $p \sim 0.67$ ) [36, 41, 43]. In contrast,  
301 some recent studies have reported nearly exponential growth pattern of the COVID-19 in Iran and Peru and  
302 an exponential growth pattern in China [33, 40, 43].

303  
304 Although the initial transmission stage of COVID-19 in Chile has been attributed to multiple case  
305 importations, Chile was quick to implement control measures against the COVID-19 epidemic including  
306 border closures on March 18<sup>th</sup>, 2020 to prevent further case importations. The 20-day ahead forecast of our  
307 GGM model calibrated to 28 days suggest that the social distancing measures including closure of schools,  
308 universities and day cares have helped slow down the early virus spread in the country by reducing  
309 population mobility [44]. The commixture of interventions including small-area lockdowns, night time  
310 curfew and ban on social gatherings in Chile can be attributed to preventing the disease trend from growing  
311 exponentially in the early growth phase. However, the significant increase in case incidence observed in  
312 mid-May can be attributed to the phased reopening of the country and easing of distancing restrictions in  
313 early May, in the context of the “Safe Return” plan [12]. As the virus reached the lower income  
314 neighborhoods in Chile, the pandemic quickly exploded [45]. While, the COVID-19 case incidence  
315 exhibited a relative stabilization in case trajectory for April 2020 (with an average of  $\sim 443$  cases per day),  
316 highlighting the positive effects of early quarantine and lockdowns, measured reopening of the country’s  
317 economy in early May 2020 resulted in the surge of cases that continue to accrue till date. The total  
318 lockdown comprised of stay at home orders imposed in Santiago (which accounts for about 77% of cases  
319 in the country) on May 15<sup>th</sup> is now showing an effect in slowing the transmission of the virus. Similar  
320 lockdowns were imposed in Antofagasta on May 5<sup>th</sup> and in Valparaíso on June 12<sup>th</sup>, though these regions  
321 together represent only  $\sim 8\%$  of cases in Chile [12]. The scaling of growth parameter,  $p$ , has been estimated  
322 at  $\sim 0.51$  (95% CI: 0.47, 0.56) after the re-imposition of lockdowns and social distancing measures in May,  
323 consistent with a linear incidence growth trend. Moreover, the reproduction number is estimated at  $\sim 0.87$

324 (95% CI: 0.84, 0.89), indicating a decline in transmission of the virus consistent with the stay at home  
325 orders. The 20-day ahead forecast calibrating data to the GLM model (from May 9<sup>th</sup>-July 7<sup>th</sup>, 2020) is  
326 reasonable indicating a declining trend in case incidence and implies that Chile could accumulate between  
327 28746-70071 cases from July 8<sup>th</sup>-July 27<sup>th</sup>, 2020. Therefore, implementation of prolonged quarantine and  
328 continued reduction in population mobility is required to contain the spread of the virus [46].

329

330 Though the number of reported cases in Latin America remains low compared to the USA, official data for  
331 many Latin American countries are incomplete. However, Chile has tested a higher percentage of its  
332 residents than any other Latin American nation lending confidence to its reliability [47]. For instance, the  
333 average number of COVID-19 tests performed in Chile per day per thousand people is 0.75 compared to  
334 the neighboring South American country, Peru (~0.09 tests per thousand people) [48]. The average  
335 positivity rate of COVID-19 in Chile is estimated at ~28.3% for June, 2020 and ~20% for the whole span  
336 of the epidemic. This high positivity rate indicates that the government has failed to cast a wide enough net  
337 to test the masses, and there are probably many more active cases than those detected by epidemiological  
338 surveillance, underestimating the epidemic growth curve [49-51]. This positivity rate for Chile is also  
339 consistent with the high positivity rates derived from Mexico and Nigeria (20-50%) [48]. In comparison  
340 countries like Denmark, Germany, Canada, New Zealand, Australia and South Korea have reached very  
341 low positivity rates (0-3%) with South Korea's large testing capacity combined with a strategy that tracks  
342 infected people via cell phones [47, 48, 52]. Other countries like India, US and Singapore exhibit  
343 moderately high positivity rates (4-8%) for COVID-19, indicating an overall limited testing in these  
344 countries [48, 53]. Moreover, studies suggest there is asymptomatic transmission of SARS-CoV-2, which  
345 means we could have underestimated our estimates based on the daily incidence's growth trend from  
346 symptomatic cases [54-56]. On the other hand, preliminary results of a study have shown the relative  
347 transmission of asymptomatic cases in Santiago to be almost ~3% [57]. While our study highlights the  
348 effectiveness of broad scale social distancing and control interventions in Chile, it also underscores the need

349 for persistent isolation and social distancing measures to stomp all active disease transmission chains in  
350 Chile.

351  
352 This study has some limitations. First our study analyzes cases by the dates of reporting while it is ideal to  
353 analyze the cases by the dates of onset or after adjusting for reporting delays. On the other hand, a  
354 substantial fraction of the COVID-19 infections exhibit very mild or no symptoms at all, which may not be  
355 reflected by data [58]. Second, the data is not stratified by local vs. imported cases, therefore, we assume  
356 that all cases contribute equally to the transmission dynamics of COVID-19. Finally, the extent of selective  
357 underreporting, and its impact on these results, is difficult to assess.

358

## 359 **5. Conclusions**

360 In this study we estimate the transmission potential of SARS-CoV-2 in Chile. Our current findings point to  
361 sustained transmission of SARS-CoV-2 in the early phase of the outbreak, with our estimate of the  
362 reproduction number at  $R \sim 1.8$ . The COVID-19 epidemic in Chile followed an early sub-exponential growth  
363 trend ( $p \sim 0.8$ ) which has transformed into an almost linear growth trend ( $p \sim 0.5$ ) with the most recent  
364 estimate of reproduction number ( $R \sim 0.8$ ) as of July 7<sup>th</sup>, 2020 indicating a decline in the virus transmission  
365 in Chile. The implementation of lockdowns and apt social distancing interventions have indeed slowed the  
366 spread of the virus. However, the number of new COVID-19 cases continue to accumulate, underscoring  
367 the need for persistent social distancing and active case finding efforts to bring the epidemic under control.

368

369 **Author Contributions:** Conceptualization, G.C. and A.T.; methodology, G.C, A.T.; validation, G.C.;  
370 formal analysis, A.T., G.C.; investigation, A.T.; resources, G.C.,A.T.; data curation, A.T.; writing—  
371 original draft preparation, A.T., G.C.; writing, review and editing, A.T., G.C., E.U, C.C, K.V., R.R, R.L,  
372 G.C.; visualization, A.T., G.C.; supervision, G.C.; project administration, G.C.; funding acquisition, G.C.

373 All authors have read and agreed to the published version of the manuscript.

374

375 **Funding:** G.C. is partially supported from NSF grants 1610429 and 1633381 and R01 GM 130900.

376

377 **Conflicts of Interest:** The authors declare no conflict of interest.

378

## 379 **References**

380 1. WHO. WHO Director-General's opening remarks at the media briefing on COVID-19-11 March  
381 2020; World Health Organization, 2020 [Accessed on: April 23] [Available from: <https://bit.ly/2A8aCIO>].

382 2. Dong E, Du H, Gardner L. An interactive web-based dashboard to track COVID-19 in real time.  
383 The Lancet Infectious Diseases. 2020;20(5):533-4.

384 3. Bank W. The Economy in the Time of Covid-19. LAC Semiannual Report. Washington, DC:  
385 World Bank; 2020 April 12. [Available from: <https://openknowledge.worldbank.org/handle/10986/33555>  
386 ].

387 4. Okada P, Buathong R, Phuygun S, Thanadachakul T, Parnmen S, Wongboot W, et al. Early  
388 transmission patterns of coronavirus disease 2019 (COVID-19) in travellers from Wuhan to Thailand,  
389 January 2020. Euro surveillance : bulletin Europeen sur les maladies transmissibles = European  
390 communicable disease bulletin. 2020;25(8).

391 5. Spiteri G, Fielding J, Diercke M, Campese C, Enouf V, Gaymard A, et al. First cases of coronavirus  
392 disease 2019 (COVID-19) in the WHO European Region, 24 January to 21 February 2020. Euro  
393 surveillance : bulletin Europeen sur les maladies transmissibles = European communicable disease bulletin.  
394 2020;25(9):2000178.

395 6. Holshue ML, DeBolt C, Lindquist S, Lofy KH, Wiesman J, Bruce H, et al. First Case of 2019 Novel  
396 Coronavirus in the United States. New England Journal of Medicine. 2020;382(10):929-36.



- 397 7. WHO. Situation Reports Coronavirus; World Health Organization, 2020 [Accessed on: March 5]  
398 [Available from: <https://www.who.int/emergencies/diseases/novel-coronavirus-2019/situation-reports>].
- 399 8. Government of Chile M. MinScience/ Data-COVID19  
400 , 2020 [Accessed on: April 25] [Available from: <https://github.com/MinCiencia/Datos-COVID19>].
- 401 9. Chile Gd. Chile enters the Stage 4 Coronavirus transmission scenario and President Piñera  
402 announces the closure of the borders and secures the supply chain. Gob.cl; 2020 March 16. [Available  
403 from: [https://www.gob.cl/en/news/chile-enters-stage-4-coronavirus-transmission-scenario-and-president-  
404 pinera-announces-closure-borders-and-secures-supply-chain/](https://www.gob.cl/en/news/chile-enters-stage-4-coronavirus-transmission-scenario-and-president-pinera-announces-closure-borders-and-secures-supply-chain/)].
- 405 10. MOH. Cifras Oficiales COVID-19, 2020 [April 2]. [Available from:  
406 <https://www.gob.cl/coronavirus/cifrasoficiales/>].
- 407 11. Cambero F. Chile bans large public events over coronavirus fears, ahead of planned protests.  
408 Reuters. 2020 March 13.
- 409 12. (MINSAL) MdS. Plan de acción por coronavirus, 2020 [Accessed on: July 1] [Available from:  
410 <https://www.gob.cl/coronavirus/plandeaccion/>].
- 411 13. MOH. Dispone medidas sanitarias que indica por brote de COVID-19.Norms 1143498, 1143591,  
412 1746958, 1143651,1143645; Biblioteca del Congreso Nacional de Chile, 2020 [Accessed on: April 24]  
413 [Available from: <https://www.leychile.cl/N?i=1143498&f=2020-04-04&p=>].
- 414 14. Wires N. Chile's capital goes into strict lockdown after Covid-19 surge. France 24. 2020 May 17.
- 415 15. Prensa Presidencia GC. "Presidente Piñera presenta Plan Retorno Seguro: “Hoy es tiempo de poner  
416 a Chile por delante”.", 2020 [Accessed on: June 10] [Available from:  
417 <https://prensa.presidencia.cl/comunicado.aspx?id=150453>].
- 418 16. Tercera L. 55% of the stores open and lines to enter: This was the reopening of the Mall Apumanque  
419 under strict protocol. La Tercera. 2020 April 30.
- 420 17. Beaubien J. How Chile Ended Up With One Of The Highest COVID-19 Rates. npr. 2020 July 2.
- 421 18. Gob.cl. Official figures COVID-19, 2020 [Accessed on: April 24] [Available from:  
422 <https://www.gob.cl/coronavirus/cifrasoficiales/#reportes>].

- 423 19. MOH. Cifras Oficiales COVID-19', Ministry of Health, Plan de Acción Coronavirus COVID-19,  
424 2020 [Accessed on: April 2] [Available from: <https://www.gob.cl/coronavirus/cifrasoficiales/>].
- 425 20. Nishiura H, Chowell G. Early transmission dynamics of Ebola virus disease (EVD), West Africa,  
426 March to August 2014. Euro surveillance : bulletin Europeen sur les maladies transmissibles = European  
427 communicable disease bulletin. 2014;19(36).
- 428 21. Nishiura H, Chowell G. The Effective Reproduction Number as a Prelude to Statistical Estimation  
429 of Time-Dependent Epidemic Trends. Springer, editor2009. 103-12 p.
- 430 22. Shanafelt DW, Jones G, Lima M, Perrings C, Chowell G. Forecasting the 2001 Foot-and-Mouth  
431 Disease Epidemic in the UK. Ecohealth. 2018;15(2):338-47.
- 432 23. Chowell G. Fitting dynamic models to epidemic outbreaks with quantified uncertainty: A primer  
433 for parameter uncertainty, identifiability, and forecasts. Infectious Disease Modelling. 2017;2(3):379-98.
- 434 24. Viboud C, Simonsen L, Chowell G. A generalized-growth model to characterize the early  
435 ascending phase of infectious disease outbreaks. Epidemics. 2016;15:27-37.
- 436 25. Chowell G, Ammon CE, Hengartner NW, Hyman JM. Transmission dynamics of the great  
437 influenza pandemic of 1918 in Geneva, Switzerland: Assessing the effects of hypothetical interventions.  
438 Journal of Theoretical Biology. 2006;241(2):193-204.
- 439 26. Chowell G, Abdirizak F, Lee S, Lee J, Jung E, Nishiura H, et al. Transmission characteristics of  
440 MERS and SARS in the healthcare setting: a comparative study. BMC Medicine. 2015;13(1):210.
- 441 27. Anderson RM, May RM. Infectious Diseases of Humans. Oxford, editor. Oxford Univeristy  
442 Press1991.
- 443 28. Nishiura H, Chowell G, Heesterbeek H, Wallinga J. The ideal reporting interval for an epidemic to  
444 objectively interpret the epidemiological time course. J R Soc Interface. 2010;7(43):297-307.
- 445 29. Ganyani T, Kremer C, Chen D, Torneri A, Faes C, Wallinga J, et al. Estimating the generation  
446 interval for coronavirus disease (COVID-19) based on symptom onset data, March 2020. Eurosurveillance.  
447 2020;25(17):2000257.

- 448 30. Paine S, Mercer G, Kelly P, Bandaranayake D, Baker M, Huang Q, et al. Transmissibility of 2009  
449 pandemic influenza A(H1N1) in New Zealand: effective reproduction number and influence of age,  
450 ethnicity and importations. *Euro surveillance : bulletin Europeen sur les maladies transmissibles =*  
451 *European communicable disease bulletin*. 2010;15(24).
- 452 31. Read JM, Bridgen JR, Cummings DA, Ho A, Jewell CP. Novel coronavirus 2019-nCoV: early  
453 estimation of epidemiological parameters and epidemic predictions. *medRxiv*. 2020:2020.01.23.20018549.
- 454 32. Wu JT, Leung K, Leung GM. Nowcasting and forecasting the potential domestic and international  
455 spread of the 2019-nCoV outbreak originating in Wuhan, China: a modelling study. *The Lancet*.  
456 2020;395(10225):689-97.
- 457 33. Muniz-Rodriguez K, Fung IC-H, Ferdosi SR, Ofori SK, Lee Y, Tariq A, et al. Transmission  
458 potential of COVID-19 in Iran. *medRxiv*. 2020:2020.03.08.20030643.
- 459 34. Mizumoto K, Kagaya K, Chowell G. Early epidemiological assessment of the transmission  
460 potential and virulence of coronavirus disease 2019 (COVID-19) in Wuhan City: China, January-February,  
461 2020. *medRxiv*. 2020:2020.02.12.20022434.
- 462 35. Hwang J, Park H, Kim S-H, Jung J, Kim N. Basic and effective reproduction numbers of COVID-  
463 19 cases in South Korea excluding Sincheonji cases. *medRxiv*. 2020:2020.03.19.20039347.
- 464 36. Shim E, Tariq A, Choi W, Lee Y, Chowell G. Transmission potential and severity of COVID-19  
465 in South Korea. *International Journal of Infectious Diseases*. 2020;93:339-44.
- 466 37. Felix FHC, Fontenele JB. Instantaneous R calculation for COVID-19 epidemic in Brazil. *medRxiv*.  
467 2020:2020.04.23.20077172.
- 468 38. Mbuviha R, Marwala T. Bayesian Inference of COVID-19 Spreading Rates in South Africa.  
469 *medRxiv*. 2020:2020.04.28.20083873.
- 470 39. Masjedi H, Rabajante JF, Bahranizadd F, Zare MH. Nowcasting and Forecasting the Spread of  
471 COVID-19 in Iran. *medRxiv*. 2020:2020.04.22.20076281.

- 472 40. Munayco CV, Tariq A, Rothenberg R, Soto-Cabezas GG, Reyes MF, Valle A, et al. Early  
473 transmission dynamics of COVID-19 in a southern hemisphere setting: Lima-Peru: February 29th–March  
474 30th, 2020. *Infectious Disease Modelling*. 2020.
- 475 41. Tariq A, Lee Y, Roosa K, Blumberg S, Yan P, Ma S, et al. Real-time monitoring the transmission  
476 potential of COVID-19 in Singapore, March 2020. *medRxiv*. 2020:2020.02.21.20026435.
- 477 42. Price DJ, Shearer FM, Meehan MT, McBryde E, Moss R, Golding N, et al. Early analysis of the  
478 Australian COVID-19 epidemic. *medRxiv*. 2020:2020.04.25.20080127.
- 479 43. Roosa K, Lee Y, Luo R, Kirpich A, Rothenberg R, Hyman JM, et al. Real-time forecasts of the  
480 COVID-19 epidemic in China from February 5th to February 24th, 2020. *Infectious Disease Modelling*.  
481 2020;5:256-63.
- 482 44. Cuadrado C, Monsalves MJ, Gajardo J, Bertoglia MP, Najera M, Alfaro T, et al. Impact of small-  
483 area lockdowns for the control of the COVID-19 pandemic. *medRxiv*. 2020:2020.05.05.20092106.
- 484 45. Contesse J. Responding to COVID-19 Without Public Trust. *The Regulatory Review*. 2020 June  
485 2.
- 486 46. France-Presse A. Chile prolongs Santiago lockdown as daily virus deaths rise. *The Jakarta Post*.  
487 2020 June 4.
- 488 47. Thomson E, Sanders P. Chile Charts New Path With Rolling Lockdowns, Immunity Cards.  
489 *Bloomberg*. 2020 April 22.
- 490 48. Oxford Uo. Our World in Data: Oxford Martin School, 2020 [Accessed on: June 28] [Available  
491 from: [https://ourworldindata.org/coronavirus/country/peru?country=~PER#how-many-tests-are-](https://ourworldindata.org/coronavirus/country/peru?country=~PER#how-many-tests-are-performed-each-day)  
492 [performed-each-day](https://ourworldindata.org/coronavirus/country/peru?country=~PER#how-many-tests-are-performed-each-day)].
- 493 49. Li R, Pei S, Chen B, Song Y, Zhang T, Yang W, et al. Substantial undocumented infection  
494 facilitates the rapid dissemination of novel coronavirus (SARS-CoV-2). *Science (New York, NY)*.  
495 2020;368(6490):489-93.
- 496 50. Bhatia S, Imai N, Cuomo-Dannenburg G, Baguelin M, Boonyasiri A, Cori A, et al. Report 6:  
497 Relative sensitivity of international surveillance. Imperial College London COVID-19 Response Team;

498 2020 February 21. [Available from: [https://www.imperial-](https://www.imperial.ac.uk/media/imperial-)  
499 [college/medicine/sph/ide/gida-fellowships/Imperial-College-COVID19-international-surveillance-21-02-](https://www.imperial.ac.uk/media/imperial-college/medicine/sph/ide/gida-fellowships/Imperial-College-COVID19-international-surveillance-21-02-2020.pdf)  
500 [2020.pdf](https://www.imperial.ac.uk/media/imperial-college/medicine/sph/ide/gida-fellowships/Imperial-College-COVID19-international-surveillance-21-02-2020.pdf)].

501 51. Asahi K, Undurraga EA, Wagner R. Benchmarking the CoVID-19 pandemic across countries and  
502 states in the U.S.A. under heterogeneous testing. medRxiv. 2020:2020.05.01.20087882.

503 52. Buchanan L, Lai KKR, McCann A. U.S. Lags in Coronavirus Testing After Slow Response to  
504 Outbreak. The NewYork Times. 2020 March 17.

505 53. Project CT. The COVID-19 tracking project, 2020 [Accessed on: May 1] [Available from:  
506 <https://covidtracking.com/about-project>].

507 54. Wei WE, Li Z, Chiew CJ, Yong SE, Toh MP, Lee VJ. Presymptomatic Transmission of SARS-  
508 CoV-2 — Singapore, January 23–March 16, 2020. 2020 April 1. [Available from:  
509 [https://www.cdc.gov/mmwr/volumes/69/wr/mm6914e1.htm?s\\_cid=mm6914e1\\_w](https://www.cdc.gov/mmwr/volumes/69/wr/mm6914e1.htm?s_cid=mm6914e1_w)].

510 55. Mizumoto K, Kagaya K, Zarebski A, Chowell G. Estimating the asymptomatic proportion of  
511 coronavirus disease 2019 (COVID-19) cases on board the Diamond Princess cruise ship, Yokohama, Japan,  
512 2020. Euro surveillance : bulletin Europeen sur les maladies transmissibles = European communicable  
513 disease bulletin. 2020;25(10):2000180.

514 56. Mayorga L, García Samartino C, Flores G, Masuelli S, Sánchez MV, Mayorga LS, et al. Detection  
515 and isolation of asymptomatic individuals can make the difference in COVID-19 epidemic management.  
516 medRxiv. 2020:2020.04.23.20077255.

517 57. Desarrollo Ud. UDD study seeks to determine Covid-19 prevalence in the Metropolitan Region.  
518 School of Medicine, German clinic development university  
519 . 2020 May 25.

520 58. Tindale L, Coombe M, Stockdale JE, Garlock E, Lau WYV, Saraswat M, et al. Transmission  
521 interval estimates suggest pre-symptomatic spread of COVID-19. medRxiv. 2020:2020.03.03.20029983.

522 59. Pública MdIyS. Declares status of constitutional exception of catastrophe, by public calamity, in  
523 the territory of Chile; Biblioteca del Congreso Nacional de Chile. , 2020 [Accessed on: April 22] [Available  
524 from: [https://www.leychile.cl/Navegar?idNorma=1143580&idVersion=2020-03-26&idParte=.](https://www.leychile.cl/Navegar?idNorma=1143580&idVersion=2020-03-26&idParte=)].

525 60. Regan H, Yeung J, Renton A, Woodyatt A, Meg Wagner. Chile mandates face masks on public  
526 and private transportation. CNN. 2020 April 6.

527 61. Mostrado E. Among applause: Mayor Lavín launches pilot plan to open the Apumanque mall. elm  
528 strador. 2020 April30.

529 62. Chile A. Total quarantine in Santiago: what time, when does it start and until what day does it  
530 extend. Tikitakas. 2020 May 15.

531

532

533

534

535

536

537

538

539

540

541

542

543

544

545

546

547

Date	Control interventions
March 13 <sup>th</sup> , 2020	Ban on large social gatherings implemented in Chile [11]
March 16 <sup>th</sup> , 2020	Closures of day care, schools and universities in Chile [13, 59]  Mandatory quarantine of high risk individuals returning from Iran, China, West Europe and South Korea
March 18 <sup>th</sup> , 2020	Declaration of national emergency (14)  Closure of country borders (14)  Telework implemented
March 19 <sup>th</sup> , 2020	Closure of mall and department stores with the exception of supermarkets, pharmacies, banks and grocery stores
March 21 <sup>st</sup> , 2020	Closure of non-essential business including theatres, restaurant, bars and gyms
March 22 <sup>nd</sup> , 2020	Night time curfew implemented [13]
March 26 <sup>th</sup> , 2020	Intermittent lockdown initiated (implemented at municipality level) [13]
April 8 <sup>th</sup> , 2020	Orders on mandatory use of facemasks in public transport [60]
April 17 <sup>th</sup> , 2020	Orders on mandatory use of facemasks in all public spaces (60)
April 30 <sup>th</sup> , 2020	First shopping mall is reopened in Santiago and then closed the next day [61]

May 15 <sup>th</sup> , 2020	Total lockdown imposed in all municipalities of Santiago [62]
-----------------------------	---

548

549 Table 1: Timeline of the implementation of the social distancing interventions in Chile as of July 7<sup>th</sup>, 2020.

550

551

552

553

554

555

556

557

558

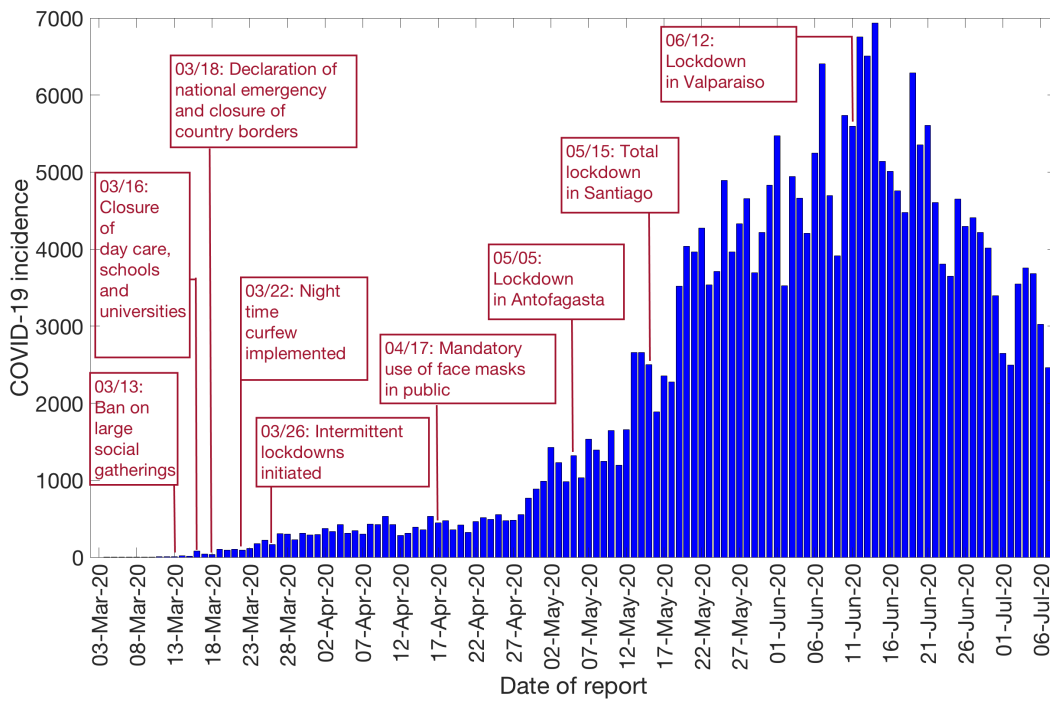
559

560

561

562





563

564 Figure 1: Daily incidence curve for all COVID-19 confirmed cases in Chile as of July 7<sup>th</sup>, 2020 (9).

565

566

567

568

569

570

571

572

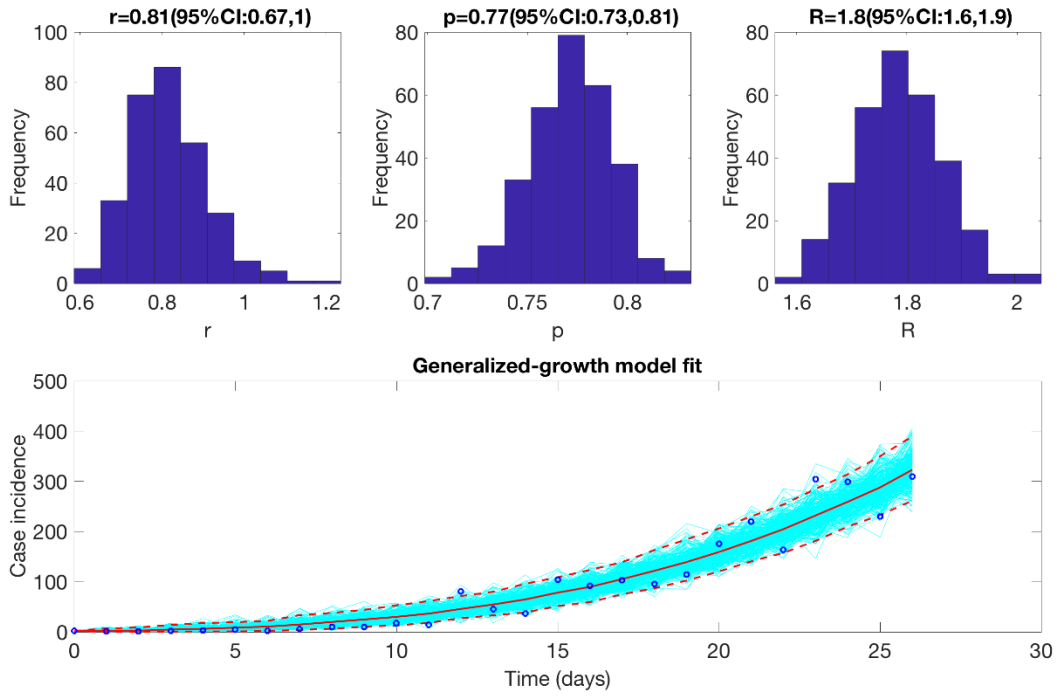
573

574

575

576

577



578

579 Figure 2 : Reproduction number with 95% CI estimated using the GGM model. The estimated reproduction

580 number of the COVID-19 epidemic in Chile as of March 28<sup>th</sup>, 2020 is 1.8 (95% CI: 1.6, 1.9).

581

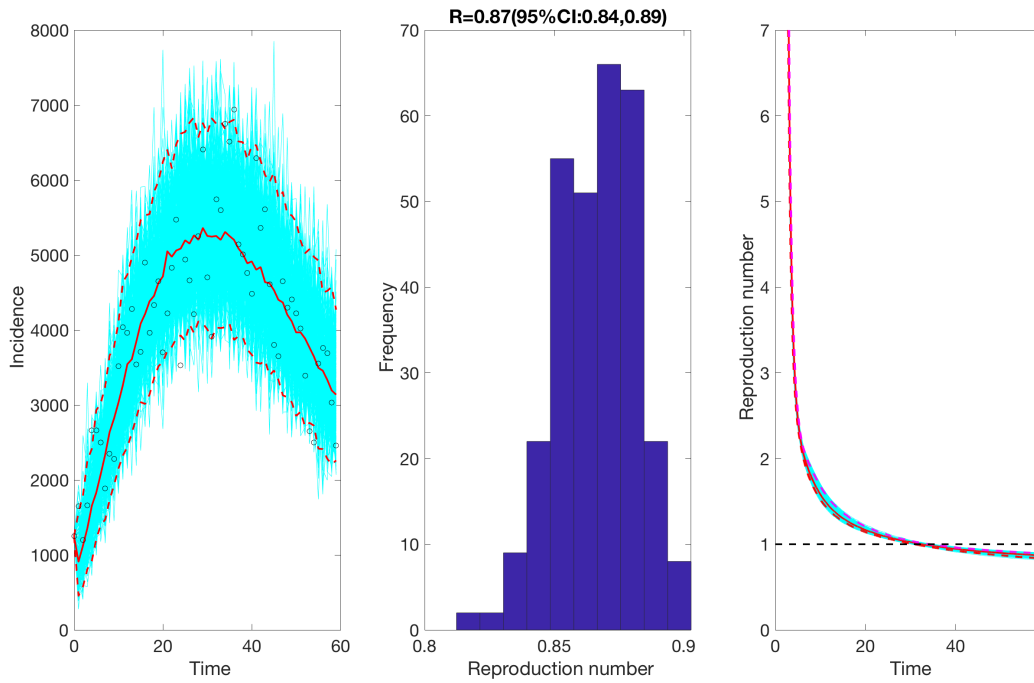
582

583

584

585

586



587

588

589 Figure 3 : Reproduction number with 95% CI estimated by calibrating the GLM model from May 9<sup>th</sup>-July

590 7<sup>th</sup>, 2020. The estimated reproduction number of the COVID-19 epidemic in Chile as of July 7<sup>th</sup>, 2020 is,

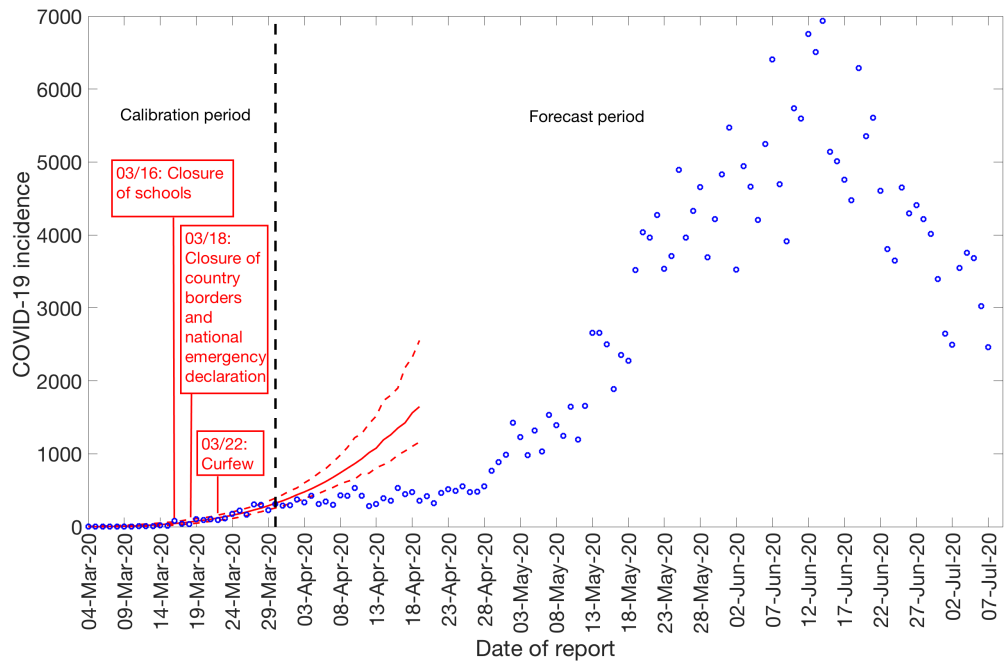
591 0.87 (95% CI: 0.84, 0.89).

592

593

594

595



596

597 Figure 4: 20-days ahead forecast of the COVID-19 epidemic in Chile by calibrating the GGM model until  
 598 March 30<sup>th</sup>, 2020. Blue circles correspond to the data points, the red solid line indicates the best model fit  
 599 and the red dashed lines represent the 95% prediction interval. The vertical black dashed line represents the  
 600 time of the start of the forecast period.

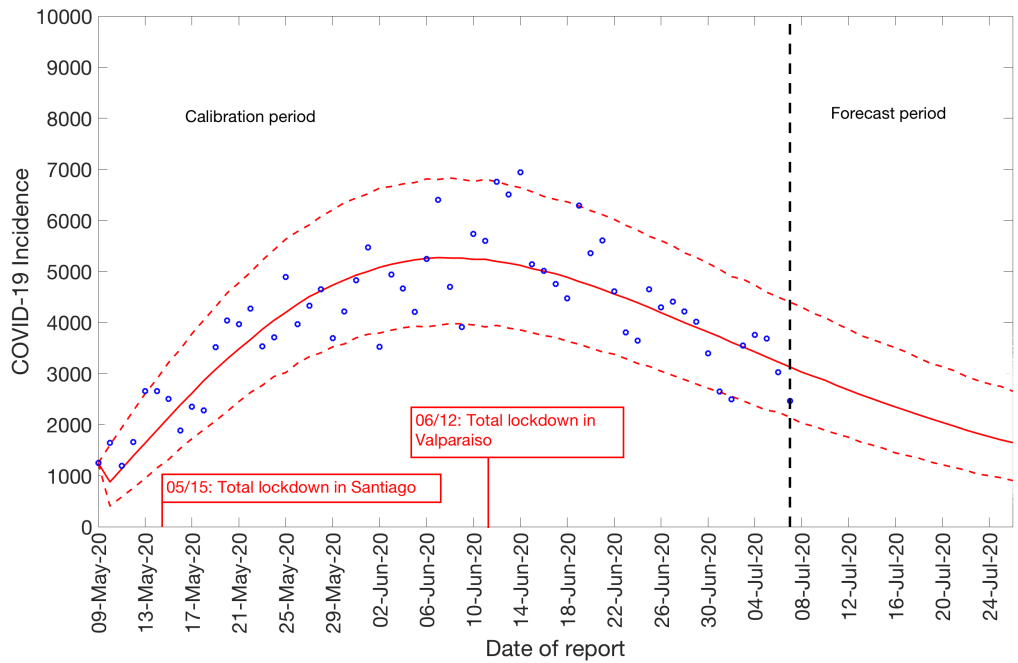
601

602

603

604

605



606

607 Figure 5: 20-days ahead forecast of the COVID-19 epidemic in Chile by calibrating the GLM model from  
 608 May 9<sup>th</sup>-July 7<sup>th</sup>, 2020. Blue circles correspond to the data points, the red solid line indicates the best model  
 609 fit and the red dashed lines represent the 95% prediction interval. The vertical black dashed line represents  
 610 the time of the start of the forecast period.

611

612

613

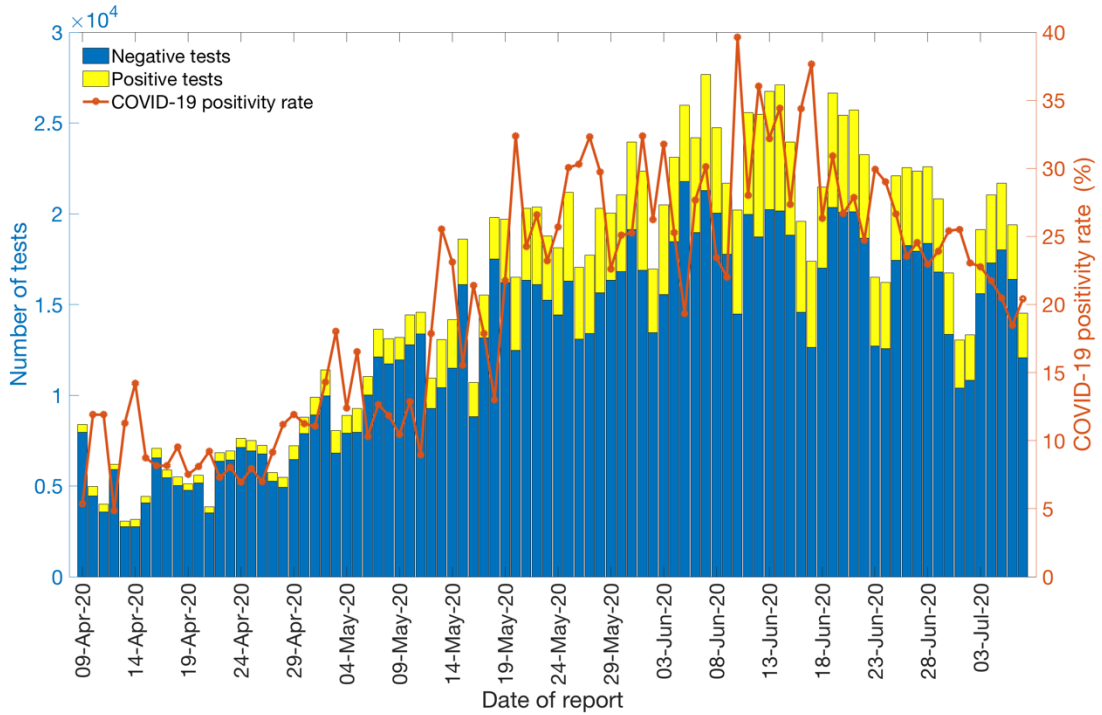
614

615

616

617

618



619

620 Figure 6: Laboratory results for the COVID-19 tests conducted in Chile as of July 7<sup>th</sup>, 2020. Blue color  
 621 represents the negative test results and the yellow color represents the positive test results. The orange solid  
 622 line represents the positivity rate of COVID-19 in Chile.

623

