

1

Transmission onset distribution of COVID-19

2

June Young Chun^{1†}, Gyuseung Baek^{2†}, Yongdai Kim^{2*}

3

4

¹Department of Internal Medicine, National Cancer Center, Goyang, South Korea

5

²Department of Statistics, Seoul National University, Seoul, South Korea

6

7

[†]June Young Chun and Gyuseung Baek contributed equally to this manuscript.

8

9

*Correspondence to:

10

Yongdai Kim, Ph.D.

11

Department of Statistics, Seoul National University, 56-1 Mountain, Sillim-dong, Gwanak-gu,

12

Seoul, 08826, South Korea

13

E-mail: ydkim0903@gmail.com, Tel: 82-2-880-9255; Fax: 82-2-883-6144

14

15 **Abstract**

16 **Objectives**

17 The distribution of the transmission onset of COVID-19 relative to the symptom onset is a
18 key parameter for infection control. It is often not easy to study the transmission onset time,
19 as is difficult to know who infected whom exactly when.

20 **Methods**

21 We inferred transmission onset time from 72 infector-infectee pairs in South Korea, either
22 with known or inferred contact dates by means of incubation period. Combining this data
23 with known information of infector's symptom onset, we could generate the transmission
24 onset distribution of COVID-19, using Bayesian methods. Serial interval distribution could
25 be automatically estimated from our data.

26 **Results**

27 We estimated the median transmission onset to be 1.31 days (standard deviation, 2.64 days)
28 after symptom onset with peak at 0.72 days before symptom onset. The pre-symptomatic
29 transmission proportion was 37% (95% credible interval [CI], 16–52%). The median
30 incubation period was estimated to be 2.87 days (95% CI, 2.33–3.50 days) and the median
31 serial interval to be 3.56 days (95% CI, 2.72–4.44 days).

32 **Conclusions**

33 Considering the transmission onset distribution peaked with the symptom onset and the pre-
34 symptomatic transmission proportion is substantial, the usual preventive measure might be
35 too late to prevent SARS-CoV-2 transmission.

36

37 **Keywords:** COVID-19, SARS-CoV-2, infectious disease transmission, infectious disease

38 incubation period

39

40 **Introduction**

41 SARS-CoV-2, a novel coronavirus first reported in Wuhan City, China in December 2019,
42 has been spreading globally and the World Health Organization declared it as a pandemic on
43 March 11, 2020 (Zhu et al., 2020). A total of 3,096,626 cases of coronavirus disease 2019
44 (COVID-19), and 217,896 confirmed deaths were counted world widely by April 30, 2020.

45

46 Considering its global threat, the transmission dynamics of COVID-19 should be made
47 explicit. There have been studies reporting the estimated serial interval and incubation period,
48 based on the early epidemics in China (Backer et al., 2020, Lauer et al., 2020, Li et al., 2020,
49 Nishiura et al., 2020). The serial interval is the duration between the symptom onset of
50 successive cases, and the incubation period is the time since infection to the symptom onset.
51 Those are key epidemiological parameters, giving essential insight to infer the transmission
52 potential or to determine the quarantine duration (White and Pagano, 2008).

53

54 There have been multiple reports of pre-symptomatic transmission of SARS-CoV-2,
55 highlighting the difficulty of containment and mitigation of the disease (He et al., 2020, Liu
56 et al., 2020, Wei et al., 2020). However, transmission onset distribution of COVID-19 has
57 never been studied before. It is not easy to study the transmission onset time, as is difficult to
58 know who infected whom exactly when. In this report, we tried to estimate the transmission
59 onset distribution relative to the symptom onset by means of solid epidemiologic data of
60 infector-infectee pairs in South Korea.

61

62 **Methods**

63 **Data**

64 We searched public reports of confirmed COVID-19 patients by government and each
65 municipal website of South Korea. As of March 31, 9,887 cases have been confirmed of
66 which 8,260 (83.5%) cases were linked to certain clusters such as religious groups, hospitals,
67 or long-term healthcare facilities. Five-hundred and sixty cases (5.7%) were imported from
68 abroad. We screened all available cases between January 23 to March 31, 2020 and selected
69 the pairs with clearly defined contact history. We excluded cases from main clusters unless
70 the causal relationship between an infector and infectee pair was evident.

71

72 For each pair of cases, we collected information on the dates of symptom onset of both the
73 infector and the infectee, exposure dates of the infectee by the infector, and the dates of
74 confirmation of both. Considering the South Korean quarantine policy, the confirmation date
75 could be regarded as the date on which isolation started. Demographic information of age and
76 sex were also gathered.

77

78 **Procedures**

79 We tried to estimate the time difference between an infector's symptom onset and its
80 transmission onset time. We defined symptom onset date (S), an infectee's infection date (I),
81 an infector's transmission onset date (P), and contact time of the pair as (C_L, C_R) , where
82 subscripts L and R denote the left and right boundaries, meaning the earliest and the latest
83 contact dates respectively. The aim of the study is to estimate the timing of P relative to the

84 $S (P - S)$, which we denominate as W . We put i as an infectee and j_i as the
85 corresponding infector, and observed $(S_{j_i}, C_{L,i}, C_{R,i}, S_i)$. I_i should be within interval
86 $[C_{L,i}, C_{R,i}]$, and transmission onset of an infector (P_j) is described as $P_j = \min_{i:j_i=j} I_i$. Using
87 the pair $\{(S_j, P_j) | j : \text{infector}\}$, we were able to estimate the distribution $f(W)$ of
88 $W = P - S$.

89

90 There are three possible scenarios for I_i in our data.

91 (i) There is an exact calendar date of an exposure. In this case, we could directly
92 achieve the timing of transmission as $I_i = C_{L,i} = C_{R,i}$.

93 (ii) There is a specified duration of exposure ($C_{L,i} < C_{R,i}$).

94 (iii) There is a continuous exposure such as household members ($C_{L,i} = -\infty, C_{R,i} =$
95 S_i).

96

97 Recall that the aim is to estimate the distribution $f(W)$ of W based on the data
98 $(S_i, C_{L,i}, C_{R,i}, S_{j_i})$ for infectees. We consider the following parametric model for $f(W)$:

99
$$W \sim f(\cdot | \theta) \Rightarrow W + \mu \sim \pi g(\cdot | \phi) + (1 - \pi) \mathcal{U}(-D, 0)(\cdot)$$

100 where $\theta = (\phi, \mu, \pi)$, $\mu > 0$, $\pi \in (0, 1)$, $g(\cdot | \phi)$ is the gamma distribution with the
101 parameter ϕ and $\mathcal{U}(-D, 0)(\cdot)$ is the uniform distribution with the support $(-D, 0)$. In the
102 model, μ is the shift parameter for cases with transmission prior to the symptom onset. We
103 introduced the term $(1 - \pi) \mathcal{U}(-D, 0)(\cdot)$ to make the effect of negative outliers of W be

104 minimal to the estimation of the parameter. That is, we considered W to be an outlier if
105 $W < -\mu$. In the model, $D > 0$ is an arbitrary limit for an outlier of W . In the analysis, we
106 used $D = 14$, since the usual incubation period is within 14 days.

107

108 A difficulty in estimating θ is that the exact W is not observed for cases in categories (ii)
109 and (iii). However, conceptually we could impute the timing of transmission I by use of the
110 estimated incubation period distribution (Reich et al., 2009). With our notation, $Z = S - I$ is
111 the incubation period. From our data of contact dates and symptom onset dates, we could
112 estimate the distribution of Z which we utilized to impute I . That is, in case (ii), we could
113 generate Z from conditional probability distribution $Z | Z \in [S - C_R, S - C_L]$, and then we
114 let $I = S - Z$. Similarly, we could generate Z from conditional probability distribution
115 $Z | Z \leq S$ for case (iii). To accommodate this idea, we used a Bayesian method and obtained
116 the posterior distribution of θ based on the Markov chain Monte Carlo (MCMC) algorithm
117 in which W is imputed for cases in categories (ii) and (iii). A detailed description of the
118 MCMC algorithm is provided in Supplementary Material.

119

120 For sensitivity analysis, we utilized the incubation period distribution of a previous study and
121 replicated the same analysis as above (Lauer et al., 2020). Moreover, we hold the parameter
122 μ as 4, and compared the result using the same procedure, since the minimum of W from
123 our data was -4 days. Serial interval distribution could be automatically estimated from our
124 data.

125

126 All analyses were conducted using the *R* statistical software version 3.6.3. All code and data
127 are available in the supplementary material. We present case numbers with randomization
128 process, instead of nationally designated identification numbers, in order to maintain
129 confidentiality.

130

131 **Ethics Approval**

132 All the data used in this study were publicly available and were approved from institutional
133 review board assessment of National Cancer Center (NCC2020-0119).

134

135 **Results**

136 We found 89 infectees with defined source of infection (infector) and contact history. Four
137 infectors (4.5%) were asymptomatic until diagnosed, and thus were excluded from the
138 analysis. Sixteen infectees (18.0%) were asymptomatic when diagnosed, among which 13
139 cases had no specified contact date and were unable to guess the infection time. In short, 72
140 infector-infectee pairs were included in the study (Fig 1).

141

142 Twenty-two cases documented a single point date of contact, and 16 cases had documented
143 duration of contact dates. Otherwise, 34 cases (32 household members and 2 colleagues) had
144 continuous exposure history (Supplementary Material). The median age of the 72 infectees
145 was 40 years (interquartile range [IQR], 24 to 54 years). Of these, 34 (47%) were male and
146 38 (53%) were female. The infectees had 40 unique infectors. The average number of
147 transmissions per infector was 1.8, with a maximum of four cases (Fig 2).

148

149 We estimated the incubation period distribution of COVID-19 using a lognormal model.
150 Among 35 pairs with given contact dates, the median incubation period was 2.87 days (95%
151 credible interval [CI], 2.33–3.50) (Table 1). The estimated median serial interval from 69
152 infector-infectee pairs with given symptom onset dates was 3.56 days (95% CI, 2.72–4.44),
153 with the best-fit using a lognormal distribution (Table 2).

154

155 Based on the 72 infector-infectee pairs, the Bayes estimate of the transmission onset
156 distribution after a smoothing procedure was given as Fig 3A. The mean and median values

157 were 1.31 days (95% CI, 0.38–2.55) and 0.68 days (95% CI, -0.09–1.73) after infectors’
158 symptom onset, respectively, with the peak at 0.72 days before symptom onset. The pre-
159 symptomatic transmission proportion was 37% (95% CI, 16–52%).

160

161 For sensitivity analysis, applying the incubation period of previous study, the transmission
162 onset distribution was inferred as Fig 3B. The mean and median values were 0.59 days (95%
163 CI, -0.33–1.79) and 0.12 days (95% CI, -0.75–1.06) after the infector’s symptom onset,
164 respectively, with the peak at 0.41 days before symptom onset. The pre-symptomatic
165 transmission proportion was 48% (95% CI, 29–67%). With a fixed parameter of μ as 4, the
166 mean and median were 0.59 (95% CI, -0.34–1.79) and -0.07 days (95% CI, -0.91–0.99), with
167 the pre-symptomatic transmission proportion of 51% (95% CI, 37–64%).

168

169 **Discussion**

170 The transmission onset distribution is of utmost interest to clinicians and public health
171 workers, but it has not been widely studied to date due to lack of epidemiological information.
172 Based on concrete data, we hereby present that the transmission of COVID-19 could start
173 before the symptom onset, and the probability peaked as the symptom start and declined
174 thereafter. Interestingly, the trend of this distribution looks similar with published SARS-
175 CoV-2 viral load kinetics though it could not include the viral load data before the symptom
176 onset (Kim et al., 2020, Zou et al., 2020).

177

178 In South Korea, the first COVID-19 case was identified on January 19, 2020 in a traveler
179 from Wuhan City, who was quarantined immediately at the airport screening. Until February
180 18, 2020, there were only imported cases from abroad or cases from their close contacts who
181 were under the surveillance. The situation was totally changed after an outbreak with an
182 unknown source of infection occurred within a religious community, resulting in a total of
183 5,210 confirmed cases in that single cluster as of April 12, 2020, a number which is almost
184 half (49.6%) of the total 10,512 cases in South Korea . This study spanned from late January
185 to the end of March, 2020, and encompassed all the phases observed in South Korea, thus
186 enhancing the reliability of the results. Furthermore, in South Korea close contacts of
187 confirmed patients were screened extensively with SARS-CoV-2 nucleic acid testing,
188 regardless of whether the contact had symptoms. Given this situation, it can be assumed that
189 cases of infection are unlikely to have been missed.

190

191 Among the 89 infectors, 4 cases (4.5%) were asymptomatic when diagnosed, but out of 89
192 infectees, 16 cases (18.0%) were asymptomatic when diagnosed. The difference is attributed
193 to the active surveillance of close contacts of COVID-19 patients, including the screening
194 tests of those asymptomatic, which in turn, pre-symptomatic. Our study revealed that
195 approximately 40% of individuals with COVID-19 infected others when they could not
196 acknowledge any symptom. This finding is in line with other recently published studies
197 revealing pre-symptomatic transmission ratio of 46% (95% CI, 21-46%), 44% (95% CI, 25-
198 69%) in China, and 48% (95% CI, 32-67%) in Singapore (Ganyani et al., 2020, He et al.,
199 2020, Liu et al., 2020).

200

201 This study has several limitations. First, the dates of symptom onset and contact time were
202 identified from epidemiological investigation and it could be false due to recall bias. Second,
203 we only collected data from definite infector-infectee pairs with defined contact times. Hence,
204 our estimation of transmission onset distribution is the upper bound of the true value. Third,
205 considering the substantial proportion of pre-symptomatic transmission, it is possible that one
206 infectee had multiple infectors, and so-called effective contacts could not be identified.
207 Fourth, we excluded clustered data to promote the accuracy of causal relationships. The
208 transmission behavior of SARS-CoV-2 might have different characteristics within unique
209 clusters, but this could not be measured in this study. Fifth, we might not catch the late-onset
210 transmission cases, considering the pre-emptive screening and isolation measures
211 implemented in South Korea.

212

213 This study provides an important message in terms of public health practice. It indicates that

214 the usual preventive measure of isolating people when they become symptomatic, might be
215 too late to prevent SARS-CoV-2 transmission.

216 **Declarations**

217 **Funding**

218 None

219

220 **Conflict of Interests**

221 The authors declare that there are no competing interests.

222

223 **Data availability**

224 All code and data are available in the supplementary materials. We present case numbers with
225 randomization process, instead of nationally designated identification numbers, in order to
226 maintain confidentiality.

227

228 **Author contributions**

229 J.Y.C. and Y.K. conceived of the study, and G.B. performed the analysis. J.Y.C. and G.B.
230 wrote the first draft of the manuscript. Y.K. reviewed and edited the manuscript. All authors
231 interpreted the findings, contributed to writing the manuscript, and approved the final version
232 for publication.

233

234 **Acknowledgement**

235 We acknowledge public health authorities in South Korea for their innumerable efforts to

236 perform epidemiologic investigation to stop the COVID-19 outbreak.

237

238

239 **References**

- 240 Coronavirus Disease-19, Republic of Korea; Available from: <http://ncov.mohw.go.kr/>.
241 [Accessed April 12, 2020].
- 242 Coronavirus disease 2019 (COVID-19) Situation Report – 52; Available from:
243 [https://www.who.int/docs/default-source/coronaviruse/situation-reports/20200312-sitrep-52-](https://www.who.int/docs/default-source/coronaviruse/situation-reports/20200312-sitrep-52-covid-19.pdf?sfvrsn=e2bfc9c0_4)
244 [covid-19.pdf?sfvrsn=e2bfc9c0_4](https://www.who.int/docs/default-source/coronaviruse/situation-reports/20200312-sitrep-52-covid-19.pdf?sfvrsn=e2bfc9c0_4). [Accessed March 30, 2020].
- 245 Coronavirus disease (COVID-19) Pandemic; Available from:
246 <https://www.who.int/emergencies/diseases/novel-coronavirus-2019>. [Accessed May 7, 2020].
- 247 COVID-19 Response Status; Available from:
248 https://blog.naver.com/gyeonggi_gov/221856148207. [Accessed April 10, 2020].
- 249 COVID-19 Situation Report (Gyeonggi); Available from:
250 <https://www.gg.go.kr/bbs/board.do?bsIdx=722&menuId=2903#page=21>. [Accessed April 10,
251 2020].
- 252 COVID-19 Situation Report (Seoul); Available from:
253 <http://www.seoul.go.kr/coronaV/coronaStatus.do>. [Accessed April 10, 2020].
- 254 Backer JA, Klinkenberg D, Wallinga J. Incubation period of 2019 novel coronavirus (2019-
255 nCoV) infections among travellers from Wuhan, China, 20-28 January 2020. *Euro Surveill*
256 2020;25(5).
- 257 Ganyani T, Kremer C, Chen D, Torneri A, Faes C, Wallinga J, et al. Estimating the generation
258 interval for COVID-19 based on symptom onset data. 2020:2020.03.05.20031815.
- 259 He X, Lau EHY, Wu P, Deng X, Wang J, Hao X, et al. Temporal dynamics in viral shedding
260 and transmissibility of COVID-19. *Nat Med* 2020.
- 261 Kim ES, Chin BS, Kang CK, Kim NJ, Kang YM, Choi JP, et al. Clinical Course and

262 Outcomes of Patients with Severe Acute Respiratory Syndrome Coronavirus 2 Infection: a
263 Preliminary Report of the First 28 Patients from the Korean Cohort Study on COVID-19. J
264 Korean Med Sci 2020;35(13):e142.

265 Lauer SA, Grantz KH, Bi Q, Jones FK, Zheng Q, Meredith HR, et al. The Incubation Period
266 of Coronavirus Disease 2019 (COVID-19) From Publicly Reported Confirmed Cases:
267 Estimation and Application. Ann Intern Med 2020.

268 Li Q, Guan X, Wu P, Wang X, Zhou L, Tong Y, et al. Early Transmission Dynamics in Wuhan,
269 China, of Novel Coronavirus-Infected Pneumonia. N Engl J Med 2020;382(13):1199-207.

270 Liu Y, null n, Funk S, Flasche S. The contribution of pre-symptomatic infection to the
271 transmission dynamics of COVID-2019 [version 1; peer review: 1 approved]. 2020;5(58).

272 Nishiura H, Linton NM, Akhmetzhanov AR. Serial interval of novel coronavirus (COVID-19)
273 infections. Int J Infect Dis 2020;93:284-6.

274 Reich NG, Lessler J, Cummings DA, Brookmeyer R. Estimating incubation period
275 distributions with coarse data. Stat Med 2009;28(22):2769-84.

276 Wei WE, Li Z, Chiew CJ, Yong SE, Toh MP, Lee VJ. Presymptomatic Transmission of
277 SARS-CoV-2 - Singapore, January 23-March 16, 2020. MMWR Morb Mortal Wkly Rep
278 2020;69(14):411-5.

279 White LF, Pagano M. A likelihood-based method for real-time estimation of the serial interval
280 and reproductive number of an epidemic. Stat Med 2008;27(16):2999-3016.

281 Zhu N, Zhang D, Wang W, Li X, Yang B, Song J, et al. A Novel Coronavirus from Patients
282 with Pneumonia in China, 2019. N Engl J Med 2020;382(8):727-33.

283 Zou L, Ruan F, Huang M, Liang L, Huang H, Hong Z, et al. SARS-CoV-2 Viral Load in
284 Upper Respiratory Specimens of Infected Patients. N Engl J Med 2020;382(12):1177-9.

285 Table 1. Estimated incubation period distributions for COVID-19 based on 35 infector-
 286 infectee pairs with defined contact dates.

	Lognormal	Gamma	Weibull
Median (95% CI)	2.87 (2.33–3.50)	2.99 (2.44–3.60)	3.10 (2.54–3.71)
Parameter 1	1.055 (0.845–1.254)	4.544 (2.590–10.494)	2.310 (1.747–3.743)
Parameter 2	0.493 (0.301–0.643)	0.709 (0.312–1.178)	3.635 (3.030–4.208)
Log-likelihood	-46.6	-45.4	-45.1

287 For the lognormal distribution, parameter 1 and parameter 2 are the mean and SD of the
 288 natural logarithm and for all other distributions, parameter 1 and parameter 2 are the shape
 289 and scale parameters, respectively.

290

291 Table 2. Estimated serial interval distributions for COVID-19 based on 69 infector-infectee
 292 pairs with symptom onset dates.

	Lognormal	Gamma	Weibull
Median (95% CI)	3.56 (2.72–4.44)	3.75 (2.87–4.72)	3.93 (3.04–4.92)
Parameter 1	3.18 (2.22–4.24)	3.45 (2.56–5.19)	1.96 (1.64–2.44)
Parameter 2	0.75 (0.47–1.03)	2.19 (1.44–2.91)	8.47 (7.53–9.53)
Log-likelihood	-77.5	-192.8	-189.8

293 For the lognormal distribution, parameter 1 and parameter 2 are the mean and SD of the
 294 natural logarithm and for all other distributions, parameter 1 and parameter 2 are the shape
 295 and scale parameters, respectively.

296

297 Figure legends

298 Fig 1. Transmission plot of infector-infectee pairs. For cases of continuous exposure, the
299 interval presentation was limited to 10 days prior to the symptom onset whoever came first,
300 considering the upper 95th percentile of pre-estimated incubation period is 10.1.

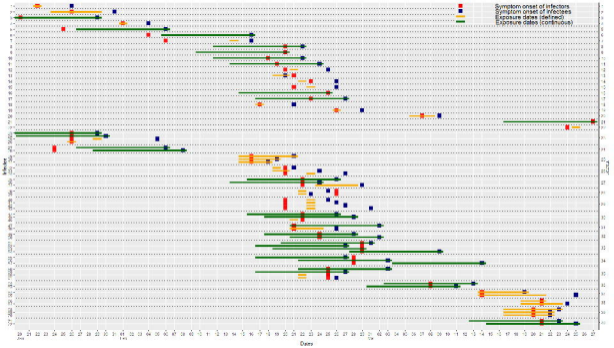
301

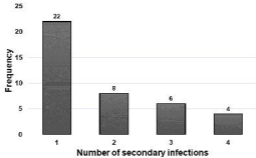
302 Fig 2. Number of secondary infections per infector in the reported data set.

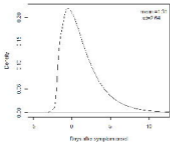
303

304 Fig 3. Estimated distribution (W) of the transmission onset of COVID-19 relative to the
305 symptom onset (A) using the incubation period distribution in the current study, and (B)
306 using the previous incubation period distribution. (Lauer et al., 2020)

307





A**Predictive density of W** **B****Predictive density of W** 