

# Anti-Spike, anti-Nucleocapsid and neutralizing antibodies in SARS-CoV-2 inpatients and asymptomatic carriers

Etienne Brochot<sup>a,b,\*</sup>, Baptiste Demey<sup>a,b</sup>, Antoine Touzé<sup>c</sup>, Sandrine Belouzard<sup>d</sup>, Jean Dubuisson<sup>d</sup>, Jean-Luc Schmit<sup>a,b</sup>, Gilles Duverlie<sup>a,b</sup>, Catherine Francois<sup>a,b</sup>, Sandrine Castelain<sup>a,b</sup>, Francois Helle<sup>b,\*</sup>

<sup>a</sup> Department of Virology, Amiens University Medical Center, Amiens, France.

<sup>b</sup> AGIR Research Unit, UR UPJV 4294, Jules Verne University of Picardie, Amiens, France.

<sup>c</sup> ISP1282 INRA University of Tours, Tours, France.

<sup>d</sup> Université Lille, CNRS, INSERM, CHU Lille, Institut Pasteur de Lille, U1019-UMR 8204-CIIL-Center for Infection and Immunity of Lille, F-59000 Lille, France.

## **Corresponding authors :**

Dr Francois Helle

UR-UPJV 4294, Agents Infectieux, Résistance et Chimiothérapie

Centre Universitaire de Recherche en Santé,

30 Avenue de la Croix Jourdain,

80000 Amiens, France

Phone: +33-322-825-351

E-mail: francois.helle@u-picardie.fr

Dr Etienne Brochot

Laboratoire de Virologie

Centre de Biologie Humaine - CHU Amiens

F-80054 Amiens cedex 1, France

Phone: +33-322-080-764

Fax: +33-322-087-009

E-mail: etienne.brochot@u-picardie.fr

## **Running title:**

Antibody response to SARS-CoV-2

## **Highlights**

- Specific antibodies are detectable in 100% COVID-19 inpatients two weeks post-symptom onset.
- The detection of the SARS-CoV-2 Nucleocapsid and Receptor Binding Domain is more sensitive than the detection of the S1 or S2 subunits.
- Neutralizing antibodies reach a plateau two weeks post-symptom onset and then decline in the majority of inpatients.
- Neutralizing antibodies are undetectable in the majority of asymptomatic carriers.

44 **Summary**

45 Objective : The objective of this study was to monitor the anti-SARS-CoV-2 antibody response in  
46 infected patients.

47 Methods : In order to assess the time of seroconversion, we used 151 samples from 30 COVID-  
48 19 inpatients and monitored the detection kinetics of anti-S1, anti-S2, anti-RBD and anti-N  
49 antibodies with in-house ELISAs. We also monitored the presence of neutralizing antibodies in  
50 these samples as well as 25 asymptomatic carrier samples using retroviral particles pseudotyped  
51 with the spike of the SARS-CoV-2.

52 Results : We observed that specific antibodies were detectable in all inpatients two weeks post-  
53 symptom onset. The detection of the SARS-CoV-2 Nucleocapsid and RBD was more sensitive  
54 than the detection of the S1 or S2 subunits. Neutralizing antibodies reached a plateau two weeks  
55 post-symptom onset and then declined in the majority of inpatients. Furthermore, neutralizing  
56 antibodies were undetectable in 56% of asymptomatic carriers.

57 Conclusions : Our results raise questions concerning the role played by neutralizing antibodies in  
58 COVID-19 cure and protection against secondary infection. They also suggest that induction of  
59 neutralizing antibodies is not the only strategy to adopt for the development of a vaccine. Finally,  
60 they imply that anti-SARS-CoV-2 neutralizing antibodies should be titrated to optimize  
61 convalescent plasma therapy.

62

63 **Keywords**

64 SARS-CoV-2 ; COVID-19 ; spike ; nucleocapsid ; neutralizing antibodies ; vaccine ;  
65 convalescent plasma therapy

66

67

## 68 **Background**

69           The Severe Acute Respiratory Syndrome Coronavirus 2 (SARS-CoV-2) has recently  
70 emerged and caused a human pandemic of coronavirus disease 2019 (COVID-19).<sup>1-3</sup> Among the  
71 coronaviruses structural proteins, the Spike (S) and the Nucleocapsid (N) proteins are the main  
72 immunogens.<sup>4</sup> The S protein consists of two subunits, S1 which contains the Receptor Binding  
73 Domain (RBD) and S2. The kinetics of antibody detection is essential for the selection of  
74 commercial serological assays and the interpretation of the results. Some manufacturers have  
75 decided to target the S1 and/or S2 subunits whereas others chose the RBD or the N protein.  
76 Furthermore, the neutralizing antibody (NAb) response against the SARS-CoV-2 remains poorly  
77 documented and it is still unknown how long cured patients will be protected against new  
78 infection.<sup>5,6</sup> The objective of our study was thus to monitor the anti-SARS-CoV-2 antibody  
79 response in infected patients.

80

## 81 **Study design**

### 82 *Study population and specimen*

83           Thirty patients diagnosed SARS-CoV-2 positive by RT-PCR on a nasopharyngeal swab  
84 sample, between 25 February and 23 March 2020 at the Amiens University Medical Center, were  
85 enrolled in the study. The general information was extracted from electronic medical records and  
86 the clinical characteristics of the 30 inpatients are described in Supplementary Table 1. Inpatients  
87 were considered as having mild disease when needing non-intensive care or severe disease when  
88 needing intensive care. Samples from patients diagnosed positive for other human coronaviruses  
89 (OC43 (n=5), 229E (n=4), NL63 (n=2) or HKU1 (n=1)) were also tested (Supplementary Table 2).  
90 Finally, we also used samples from 25 asymptomatic carriers (Supplementary Table 3) that were  
91 diagnosed SARS-CoV-2 positive using commercial serological tests (LIAISON® SARS-CoV-2 IgG  
92 from DiaSorin and/or ELISA SARS-CoV-2 (IgG) from EUROIMMUN). All plasmas were

*Brochot et al.*

93 decomplemented at 56°C for 30 min. The study was approved by the institutional review board of  
94 the Amiens University Medical Center (number PI2020\_843\_0046, 21 April 2020).

95

#### 96 *In-house ELISAs*

97 MaxiSorp Nunc-immuno 96-well plates were coated with a 1 µg/mL solution of SARS-CoV-  
98 2 S1, S2, RBD or N antigen (The Native Antigen Company, United Kingdom), overnight at 4°C.  
99 Wells were blocked with 1% fetal bovine serum for 1 hour at 37°C. Then, 100 µL of diluted plasmas  
100 (1:100 for S1, S2 and RBD or 1:200 for N) were added and incubated for 1 h at 37°C. After washing  
101 4 times, plates were incubated with peroxidase conjugated mouse anti-human IgG (Southern  
102 Biotech, 1/6000). After 4 washes, 100 µL of o-phenylenediamine peroxidase substrate was added  
103 at room temperature in the dark. The reaction was stopped with H<sub>2</sub>SO<sub>4</sub> solution 15 min later. The  
104 optical density was measured at 490 nm. All samples were run in triplicate. To establish the  
105 specificity of each assay, 40 pre-pandemic sera from 2019 were tested. Each cut-off values were  
106 defined as the means plus 3 standard deviations obtained with these samples.

107

#### 108 *Neutralization assay*

109 Retroviral particles pseudotyped with the S glycoprotein of the SARS-CoV-2 (SARS-CoV-  
110 2pp) were produced as described previously <sup>7</sup>, with a plasmid encoding a human codon-optimized  
111 sequence of the SARS-CoV-2 spike glycoprotein (accession number: MN908947). Supernatants  
112 containing the pseudotyped particles were harvested at 48, 72 and 96 h after transfection, pooled  
113 and filtered through 0.45-µm pore-sized membranes. Neutralization assays were performed by  
114 preincubating SARS-CoV-2pp and diluted plasma for 1 h at room temperature before contact with  
115 Vero cells (ATCC® CCL-81™) that were transiently transfected with the plasmids pcDNA3.1-  
116 hACE2 and pcDNA3.1-TMPRSS2 48 h before inoculation. Luciferase activities were measured  
117 72 h post-infection, as indicated by the manufacturer (Promega). The NAb titers were defined as  
118 the highest dilution of plasma which resulted in a 90% decrease of the infectivity. Retroviral

119 particles pseudotyped with the G glycoprotein of the Vesicular Stomatitis Virus (VSVpp) were used  
120 to control the specificity of the neutralization.

121

## 122 *Statistical analysis*

123 Quantitative variables were expressed as the median and compared using Student's t-test.  
124 The Pearson correlation coefficient was used to measure the strength of a linear association  
125 between two quantitative variables. Statistical analyses were performed using GraphPad Prism 5.  
126 A two-sided P-value < 0.05 was considered statistically significant.

127

## 128 **Results**

### 129 *Antibody response in SARS-CoV-2 infected inpatients*

130 In order to accurately assess the time of seroconversion, we used 151 samples from 30  
131 patients hospitalized at the Amiens University Medical Center for a COVID-19 (see Supplementary  
132 Table 1) and monitored the kinetics of detection of anti-S1, anti-S2, anti-RBD and anti-N  
133 antibodies with in-house ELISAs. Importantly, plasmas from twelve patients that had previously  
134 been infected with other coronaviruses (OC43 (n=5), 229E (n=4), NL63 (n=2) or HKU1 (n=1))  
135 showed minimal cross-reactivity, which highlights the specificity of these assays (Supplementary  
136 Table 2). We observed that antibodies targeting the N protein and the RBD were the earliest to be  
137 detected (Fig. 1A). Thirteen days post-symptom onset, 100% of inpatients had detectable  
138 antibodies to both proteins. A similar profile was observed for anti-S2 antibodies but with a mean  
139 time lag of two days. Antibodies to the S1 subunit were the last to be detected and remained  
140 undetectable for two inpatients. High levels of anti-N and anti-RBD antibodies were detected in  
141 the large majority of samples obtained fourteen days post-symptom onset whereas very  
142 heterogeneous levels of anti-S1 antibodies were found in the same samples (Fig. 1B). The  
143 correlations between each ELISA are shown in Supplementary Fig. 1 and clearly demonstrate that  
144 detection of the N protein and/or the RBD is more sensitive than the detection of the S1

*Brochot et al.*

145 (Supplementary Fig. 1B and 1C) or the S2 subunit (see Supplementary Fig. 1D and 1E).  
146 Significant differences were observed between mild disease versus severe disease patients for  
147 anti-S1, anti-S2 and anti-N antibody levels, from eight days post-symptom onset (Supplementary  
148 Fig. 2A). A slight difference was observed for anti-N antibody levels according to the sex, from  
149 fourteen days post-symptom onset (Supplementary Fig. 2B). Finally, a significant difference was  
150 observed for anti-S1 and anti-S2 antibodies according to the age, between eight and fourteen  
151 days post-symptom onset (Supplementary Fig. 2C).

152

### 153 *NAb response to SARS-CoV-2 in COVID-19 inpatients*

154 We also monitored the presence of NABs in all plasma samples using SARS-CoV-2pp.<sup>7</sup>  
155 Importantly, Ni *et al.* recently demonstrated that there was a significantly positive correlation in the  
156 NAb titers between such pseudotyped particles and the native SARS-CoV-2.<sup>8</sup> The results obtained  
157 for each inpatient are presented in Fig. 2. One sample of each inpatient was also used to perform  
158 dose-response curves with VSVpp and no inhibition was observed, demonstrating that the  
159 neutralization observed with the COVID-19 inpatient plasmas was specific to the SARS-CoV-2  
160 (Supplementary Fig. 3A). Furthermore, plasmas from the twelve patients that had previously been  
161 infected with other coronaviruses did not have any effect on SARS-CoV-2 pseudotype infectivity  
162 (Supplementary Table 2 and Supplementary Fig. 3B). As expected, our results demonstrate that  
163 the NAb production kinetic correlates with the production of antibodies targeting the S1, S2  
164 subunits as well as the RBD and we detected NABs in all COVID-19 inpatients fifteen days post-  
165 symptom onset (Fig. 1A). The NAb titers increased from one week post-symptom onset and  
166 reached a plateau one week after (Fig. 3). However, the NAb titers reached were variable between  
167 inpatients, 17% generated low levels of NABs ( $40 \leq \text{titers} < 160$ ), 73% intermediate levels ( $160 \leq$   
168  $\text{titers} < 1280$ ) and 10% high levels ( $1280 \leq \text{titers}$ ) (Fig. 3A). We also had the opportunity to monitor  
169 the presence of NABs in late samples of eleven inpatients ( $\geq 40$  days post-symptom onset) and we  
170 observed that the NAb titer dropped to low or undetectable level in most of these samples

*Brochot et al.*

171 (Fig. 3B). Significantly higher NAb titers were observed in inpatients with severe forms ( $p=0.04$ ;  
172 Supplementary Fig. 4A) and in women ( $p=0.03$ ; Supplementary Fig. 4B) from 14 days post-  
173 symptom onset. In contrast, no significant difference was observed according to the age  
174 (Supplementary Fig. 4C). Furthermore, we found poor correlations between NAb titers and anti-  
175 S1 ( $r=0.4573$ ), anti-S2 ( $r=0.3852$ ), anti-N ( $r=0.3629$ ) or anti-RBD ( $r=0.3277$ ) antibody levels, as  
176 well as white blood cells ( $r=0.2384$ ) and lymphocytes counts ( $r=0.3696$ ) (Fig. 4).

177

### 178 *SARS-CoV-2 NABs in asymptomatic carrier samples*

179 Finally, we monitored the presence of NABs in plasma samples from 25 asymptomatic  
180 carriers. It is important to note that we could not establish when these patients had been infected  
181 since they were asymptomatic but it probably occurred more than one week before sampling since  
182 they were confirmed seropositive using commercial serological assays as well as in-house ELISAs  
183 (Supplementary Table 3). As shown in Fig. 5, NABs were below the detection limit of our assay in  
184 the majority of these plasma samples (56%, 14/25). Low NAb levels ( $40 \leq \text{titers} < 160$ ) were found  
185 in 28% of these patients (7/25). Three patients had intermediate NAb levels ( $160 \leq \text{titers} < 1280$ )  
186 and only one showed a high NAb titer ( $\geq 1280$ ).

187

## 188 **Discussion**

189 Commercial serological assays that are complementary to direct viral detection of the  
190 SARS-CoV-2 by RT-PCR have recently become available but they need to be finely evaluated.<sup>9,10</sup>  
191 We only tested IgG detection since recent data showed that anti-SARS-CoV-2 IgG levels increase  
192 at the same time or earlier than IgM levels.<sup>11</sup> With our four in-house ELISAs, we showed that the  
193 detection of the RBD and the N protein may be more suitable since it was highly or slightly more  
194 sensitive than the detection of S1 or S2, respectively. The presence of cryptic epitopes in the RBD  
195 could explain why in some cases anti-RBD antibodies are detected whereas anti-S1 antibodies  
196 are not.<sup>12</sup>

197           As other groups, we also report that COVID-19 patients generate variable levels of NABs  
198 that reach a plateau two weeks post-symptom onset without correlation with clinical courses.<sup>8,13-</sup>  
199 <sup>16</sup> This raises questions concerning the role played by NABs and suggest that other arms of the  
200 immune system may play a more important role in COVID-19 cure. Our results also indicate that  
201 the SARS-CoV-2 does not induce a prolonged neutralizing antibody response since we observed  
202 a drop of the NAb titer for several patients a few weeks after infection, which has also been  
203 observed by Wang *et al.* on a small cohort.<sup>14</sup> Furthermore, we observed that most of asymptomatic  
204 carriers do not generate NABs. The longevity of the protection against reinfection is thus  
205 questionable. However, the immunological memory would certainly protect against severe disease  
206 if reinfection would occur. These results also suggest that induction of NAb production is not the  
207 only strategy to adopt for the development of a SARS-CoV-2 vaccine. Finally, since we observed  
208 poor correlations between NAb titers and S1, S2, RBD or N binding, our results imply that anti-  
209 SARS-CoV-2 NABs should be titrated to optimize convalescent plasma therapy.<sup>17,18</sup>

210

211

212

## 213 **Acknowledgments**

214           We thank the study participants who donated their blood samples for this project, and the  
215 healthcare workers who care for COVID-19 patients. This work was supported by Flash Covid-19  
216 funds from the Amiens University Medical Center and the French “Agence Nationale de la  
217 Recherche”.

218

## 219 **Declaration of Competing Interest**

220           The authors declare no competing interests.

221



## 222 References

- 223 1. Wu F, Zhao S, Yu B, Chen YM, Wang W, Song ZG, et al. A new coronavirus associated with  
224 human respiratory disease in China. *Nature*. 2020;**579**(7798):265-9. doi:[10.1038/s41586-020-](https://doi.org/10.1038/s41586-020-2008-3)  
225 [2008-3](https://doi.org/10.1038/s41586-020-2008-3).
- 226 2. Zhou P, Yang XL, Wang XG, Hu B, Zhang L, Zhang W, et al. A pneumonia outbreak associated  
227 with a new coronavirus of probable bat origin. *Nature*. 2020;**579**(7798):270-3.  
228 doi:[10.1038/s41586-020-2012-7](https://doi.org/10.1038/s41586-020-2012-7).
- 229 3. Zhu N, Zhang D, Wang W, Li X, Yang B, Song J, et al. A Novel Coronavirus from Patients with  
230 Pneumonia in China, 2019. *N Engl J Med*. 2020;**382**(8):727-33. doi:[10.1056/NEJMoa2001017](https://doi.org/10.1056/NEJMoa2001017).
- 231 4. Meyer B, Drosten C, Müller MA. Serological assays for emerging coronaviruses: challenges and  
232 pitfalls. *Virus Res*. 2014;**194**:175-83. doi:[10.1016/j.virusres.2014.03.018](https://doi.org/10.1016/j.virusres.2014.03.018).
- 233 5. Kirkcaldy RD, King BA, Brooks JT. COVID-19 and Postinfection Immunity: Limited Evidence,  
234 Many Remaining Questions. *JAMA*. 2020. doi:[10.1001/jama.2020.7869](https://doi.org/10.1001/jama.2020.7869).
- 235 6. Ota M. Will we see protection or reinfection in COVID-19? *Nat Rev Immunol*. 2020;**20**(6):351.  
236 doi:[10.1038/s41577-020-0316-3](https://doi.org/10.1038/s41577-020-0316-3).
- 237 7. Millet JK, Whittaker GR. Murine Leukemia Virus (MLV)-based Coronavirus Spike-pseudotyped  
238 Particle Production and Infection. *Bio Protoc*. 2016;**6**(23). doi:[10.21769/BioProtoc.2035](https://doi.org/10.21769/BioProtoc.2035).
- 239 8. Ni L, Ye F, Cheng ML, Feng Y, Deng YQ, Zhao H, et al. Detection of SARS-CoV-2-Specific  
240 Humoral and Cellular Immunity in COVID-19 Convalescent Individuals. *Immunity*. 2020.  
241 doi:[10.1016/j.immuni.2020.04.023](https://doi.org/10.1016/j.immuni.2020.04.023).
- 242 9. Krüttgen A, Cornelissen CG, Dreher M, Hornef M, Imöhl M, Kleines M. Comparison of four new  
243 commercial serologic assays for determination of SARS-CoV-2 IgG. *J Clin Virol*.  
244 2020;**128**:104394. doi:[10.1016/j.jcv.2020.104394](https://doi.org/10.1016/j.jcv.2020.104394).
- 245 10. Demey B, Daher N, François C, Lanoix JP, Duverlie G, Castelain S, et al. Dynamic profile for the  
246 detection of anti-SARS-CoV-2 antibodies using four immunochromatographic assays. *J Infect*.  
247 2020. doi:[10.1016/j.jinf.2020.04.033](https://doi.org/10.1016/j.jinf.2020.04.033).
- 248 11. To KK, Tsang OT, Leung WS, Tam AR, Wu TC, Lung DC, et al. Temporal profiles of viral load in  
249 posterior oropharyngeal saliva samples and serum antibody responses during infection by SARS-  
250 CoV-2: an observational cohort study. *Lancet Infect Dis*. 2020;**20**(5):565-74. doi:[10.1016/s1473-](https://doi.org/10.1016/s1473-3099(20)30196-1)  
251 [3099\(20\)30196-1](https://doi.org/10.1016/s1473-3099(20)30196-1).
- 252 12. Yuan M, Wu NC, Zhu X, Lee CD, So RTY, Lv H, et al. A highly conserved cryptic epitope in the  
253 receptor binding domains of SARS-CoV-2 and SARS-CoV. *Science*. 2020;**368**(6491):630-3.  
254 doi:[10.1126/science.abb7269](https://doi.org/10.1126/science.abb7269).
- 255 13. Fafi-Kremer S, Bruel T, Madec Y, Grant R, Tondeur L, Grzelak L, et al. Serologic responses to  
256 SARS-CoV-2 infection among hospital staff with mild disease in eastern France. *medRxiv*.  
257 2020:2020.05.19.20101832. doi:[10.1101/2020.05.19.20101832](https://doi.org/10.1101/2020.05.19.20101832).
- 258 14. Wang X, Guo X, Xin Q, Pan Y, Li J, Chu Y, et al. Neutralizing Antibodies Responses to SARS-  
259 CoV-2 in COVID-19 Inpatients and Convalescent Patients. *medRxiv*. 2020:2020.04.15.20065623.  
260 doi:[10.1101/2020.04.15.20065623](https://doi.org/10.1101/2020.04.15.20065623).
- 261 15. Wu F, Wang A, Liu M, Wang Q, Chen J, Xia S, et al. Neutralizing antibody responses to SARS-  
262 CoV-2 in a COVID-19 recovered patient cohort and their implications. *medRxiv*.  
263 2020:2020.03.30.20047365. doi:[10.1101/2020.03.30.20047365](https://doi.org/10.1101/2020.03.30.20047365).
- 264 16. Wölfel R, Corman VM, Guggemos W, Seilmaier M, Zange S, Müller MA, et al. Virological  
265 assessment of hospitalized patients with COVID-2019. *Nature*. 2020;**581**(7809):465-9.  
266 doi:[10.1038/s41586-020-2196-x](https://doi.org/10.1038/s41586-020-2196-x).
- 267 17. Chen L, Xiong J, Bao L, Shi Y. Convalescent plasma as a potential therapy for COVID-19. *Lancet*  
268 *Infect Dis*. 2020;**20**(4):398-400. doi:[10.1016/s1473-3099\(20\)30141-9](https://doi.org/10.1016/s1473-3099(20)30141-9).
- 269 18. Roback JD, Guarner J. Convalescent Plasma to Treat COVID-19: Possibilities and Challenges.  
270 *JAMA*. 2020. doi:[10.1001/jama.2020.4940](https://doi.org/10.1001/jama.2020.4940).
- 271
- 272

Brochot et al.

273 **Supplementary Table 1. Characteristics of the 30 inpatients included in the study**

274

<b>Patient characteristics</b>		<b>Mild Disease (n=12)</b>	<b>Severe disease (n=18)</b>
	Female	6 (50%)	6 (33%)
	Male	6 (50%)	12 (66%)
	Median Age (Years)	77 (59-87)	63 (38-78)
	Hypertension	7	9
	Chronic heart disease	3	3
Chronic comorbidities	Chronic lung disease	3	0
	Chronic kidney disease	2	0
	Diabetes	3	4
	Hyperlipidemia	2	1

275

276

277

278

Brochet et al.

279 **Supplementary Table 2. Patients previously infected with endemic coronaviruses used as**  
280 **control in the study**

281

Patient	Coronavirus strain	Days post-diagnostic	Detection of IgG in our in house ELISA assays				SARS-CoV-2 NAb titer
			S1	S2	RBD	NP	
C1	OC43	174	-	-	+/-	-	<40
C2	229E	39	-	-	-	-	<40
C3	NL63	561	-	-	-	-	<40
C4	OC43	170	-	-	-	-	<40
C5	OC43	176	-	-	-	-	<40
C6	NL63	16	-	-	-	-	<40
C7	229E	14	-	-	+	+	<40
C8	HKU1	24	-	-	-	-	<40
C9	OC43	301	+/-	-	-	+/-	<40
C10	229E	56	-	-	-	-	<40
C11	229E	761	-	-	-	+/-	<40
C12	OC43	86	-	-	-	-	<40

282 +, positive ; -, negative ; +/-, equivocal

283

284

Brochot et al.

285 **Supplementary Table 3. SARS-CoV-2 asymptomatic carriers included in the study**

286

Patient	Detection of IgG in in house ELISAs			Diasorin assay	Euro- immun assay	SARS-CoV- 2 NAb titer
	S1	S2	NP			
AC1	+	+	+	+	+/-	40
AC2	+	+/-	+	-	+	<40
AC3	+	+	+	+	+	40
AC4	+/-	+	+	+	-	<40
AC5	-	+	+	+	-	<40
AC6	+/-	+	+	+	+/-	<40
AC7	+	+	+	+	+	160
AC8	+	+	+	+	+	640
AC9	+	+	+	+	+	<40
AC10	+	+	+	+	+	80
AC11	+	+	+	-	+	<40
AC12	-	+	+	+	-	<40
AC13	+	+/-	+	-	+	<40
AC14	+	+	+	+	+	480
AC15	+	+	+	+/-	+	<40
AC16	+	+	+	+	+	120
AC17	+	+	+	+	+	80
AC18	+	+	+	+	+	5120
AC19	+	+	+	+	+	<40
AC20	+	+	+	+	+	<40
AC21	+	+	+	+	+	60
AC22	+	+	+	+	+	60
AC23	+	+	+	+	+	<40
AC24	+	+	+	+	+	<40
AC25	+	+	+	+	+	<40

287 +, positive ; -, negative ; +/-, equivocal

288

289

290

291

## 292 **Figure Legends**

293 **Fig. 1.** Antibody response in SARS-CoV-2 infected inpatients. (A) Kinetics of anti-S1, anti-S2, anti-  
294 RBD, anti-N and NAb detection in 30 COVID-19 inpatients post-symptom onset. (B) Evolution of  
295 the anti-S1, anti-S2, anti-RBD and anti-N antibody levels during the first month post-symptom  
296 onset.

297 **Fig. 2.** NAb response to SARS-CoV-2 in COVID-19 inpatients. SARS-CoV-2pp were preincubated  
298 with serially diluted plasma obtained from 30 COVID-19 inpatients (#1 to #30) at different days  
299 post-symptom onset (d2 to d58). Dose response curves represent the means of normalized  
300 infectivity (%) from two independent experiments performed in duplicate. Error bars have been  
301 omitted for clarity.

302 **Fig. 3.** (A) Evolution of the NAb titer in 30 COVID-19 inpatients during the first month post-  
303 symptom onset. (B) Evolution of the NAb titer in 11 COVID-19 inpatients after more than 40 days  
304 post-symptom onset. The dashed line indicates the cut-off of the assay.

305 **Fig. 4.** Correlations between NAb titers and anti-S1, anti-S2, anti-RBD and anti-N antibody levels  
306 as well as white blood cells counts or lymphocyte counts. (A) NAb titer versus anti-S1. (B) NAb  
307 titer versus anti-S2. (C) NAb titer versus anti-RBD. (D) NAb titer versus anti-N. (E) NAb titer versus  
308 white blood cells counts. (F) NAb titer versus lymphocyte counts. Dashed lines indicate assay cut-  
309 offs for positivity. OD, optical density.

310 **Fig. 5.** SARS-CoV-2 NAb in asymptomatic carrier samples. (A) SARS-CoV-2pp were  
311 preincubated with serially diluted plasma obtained from 25 asymptomatic carriers that were  
312 confirmed with commercial serological assays (AC1 to AC25). Dose response curves represent  
313 the means of normalized infectivity (%) from two independent experiments performed in duplicate.  
314 Error bars have been omitted for clarity. (B) Determination of the NAb titer in plasma samples from  
315 25 asymptomatic carriers.

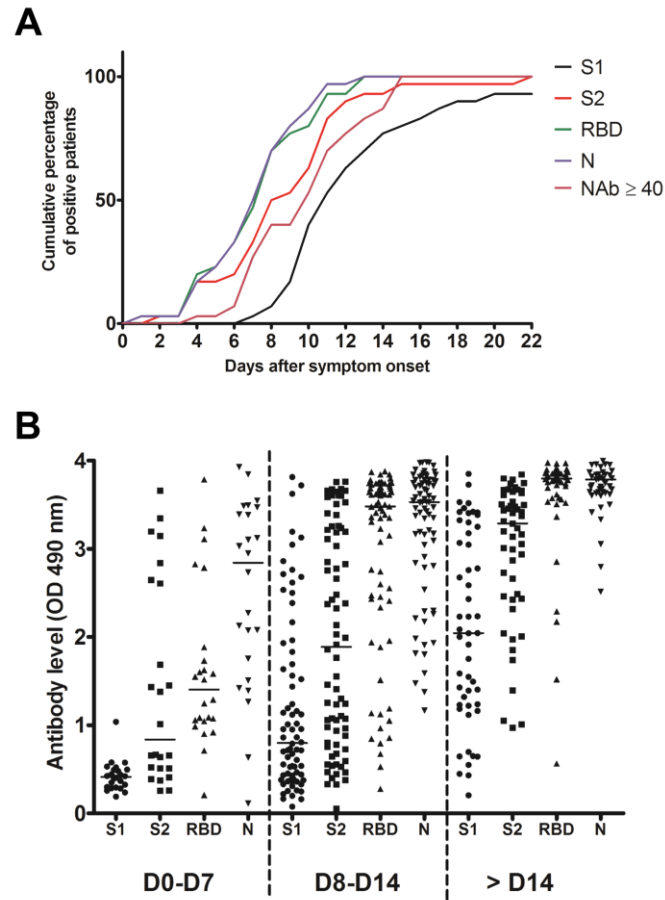
316 **Supplementary Fig. 1.** Correlations between anti-S1, anti-S2, anti-RBD and anti-N levels in in-  
317 house ELISAs. (A) anti-S1 versus anti-S2. (B) anti-S1 versus anti-RBD. (C) anti-S1 versus anti-N.  
318 (D) anti-S2 versus anti-RBD. (E) anti-S2 versus anti-N. (F) anti-RBD versus anti-N. Dashed lines  
319 indicate assay cut-offs for positivity. OD, optical density.

320 **Supplementary Fig. 2.** Temporal profiles of anti-S1, anti-S2, anti-RBD and anti-N antibody levels.  
321 Inpatients samples were divided into three periods groups (day 0-7, day 8-14 and day >14). (A)  
322 The temporal profiles are presented according to the severity of the disease (SD, severe disease  
323 requiring intensive care ; MD, mild disease requiring non-intensive care). (B) The temporal profiles  
324 are presented according to the sex (M, male ; F, female). (C) The temporal profiles are presented  
325 according to the age (< or > 60 years old). Dashed lines indicate assays cut-offs for positivity and  
326 lines indicate the median for each assay. OD, optical density. NS, not significant ; \*,  $p < 0.05$  ; \*\*,  
327  $p < 0.01$ .

328 **Supplementary Fig. 3.** Specificity of the neutralization assay. (A) VSVpp were preincubated with  
329 serially diluted plasma obtained from 30 COVID-19 inpatients (#1 to #30). (B) SARS-CoV-2pp  
330 were preincubated with serially diluted plasma obtained from 12 patients infected with 229E, NL63,  
331 HKU1 or OC43 coronaviruses (C1 to C12). Dose response curves represent the means of  
332 normalized infectivity (%) from two independent experiments performed in duplicate. Error bars  
333 have been omitted for clarity.

334 **Supplementary Fig. 4.** Temporal profiles of NAb titers. Inpatients samples were divided into three  
335 periods groups (day 0-7, day 8-14 and day >14). (A) The temporal profiles are presented according  
336 to the severity of the disease (SD, severe disease requiring intensive care ; MD, mild disease  
337 requiring non-intensive care). (B) The temporal profiles are presented according to the sex (M,  
338 male ; F, female). (C) The temporal profiles are presented according to the age (< or > 60 years  
339 old). Dashed lines indicate assays cut-offs for positivity and lines indicate the median for each  
340 assay. NS, not significant ; \*,  $p < 0.05$  ; \*\*,  $p < 0.01$ .

Brochot et al.



341

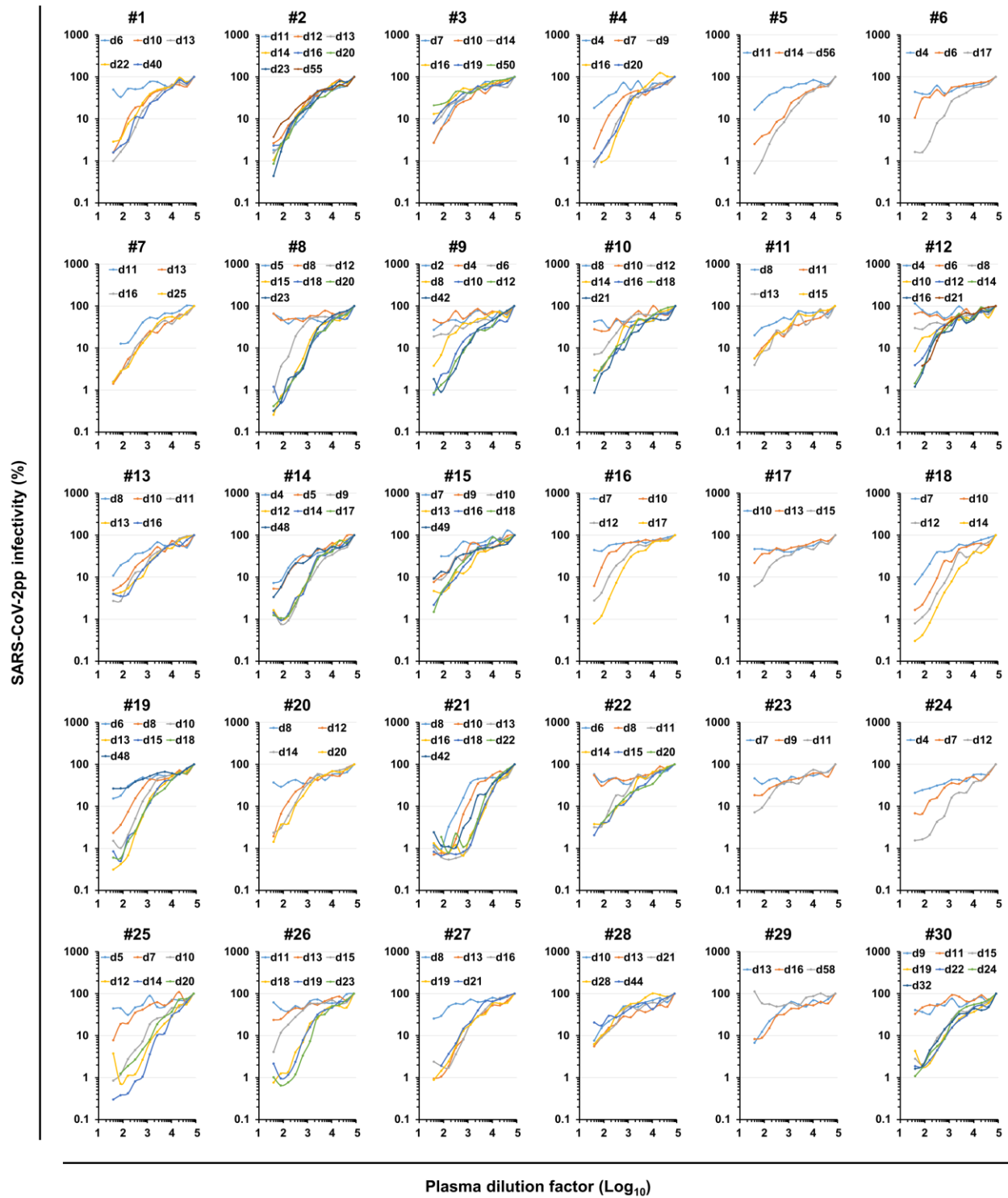
342

343

344

Fig 1

Brochot et al.



345

346

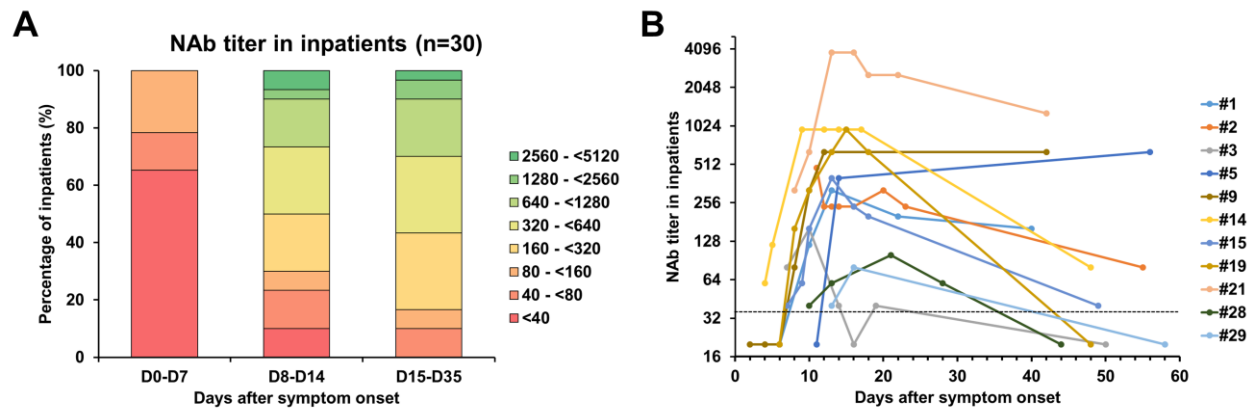
347

348

Fig 2



Brochot et al.



349

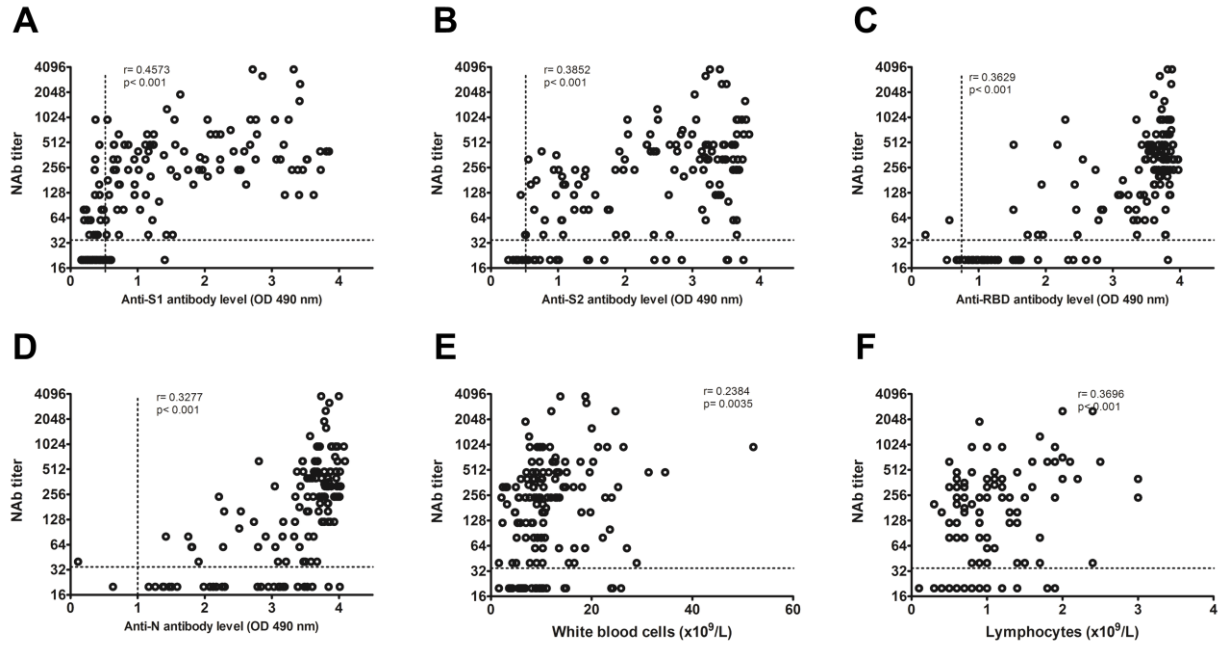
350

351

352

Fig 3

Brochot et al.



353

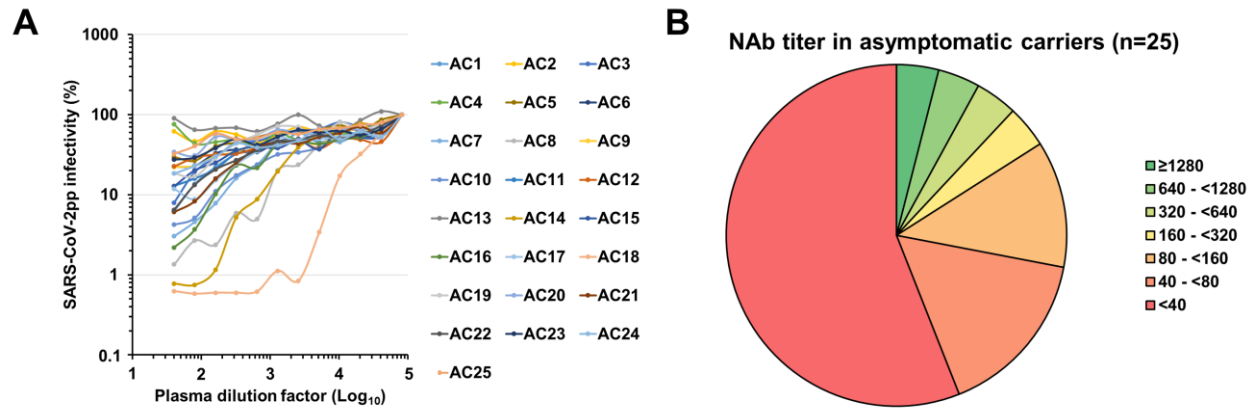
354

355

356

Fig 4

Brochot et al.



357

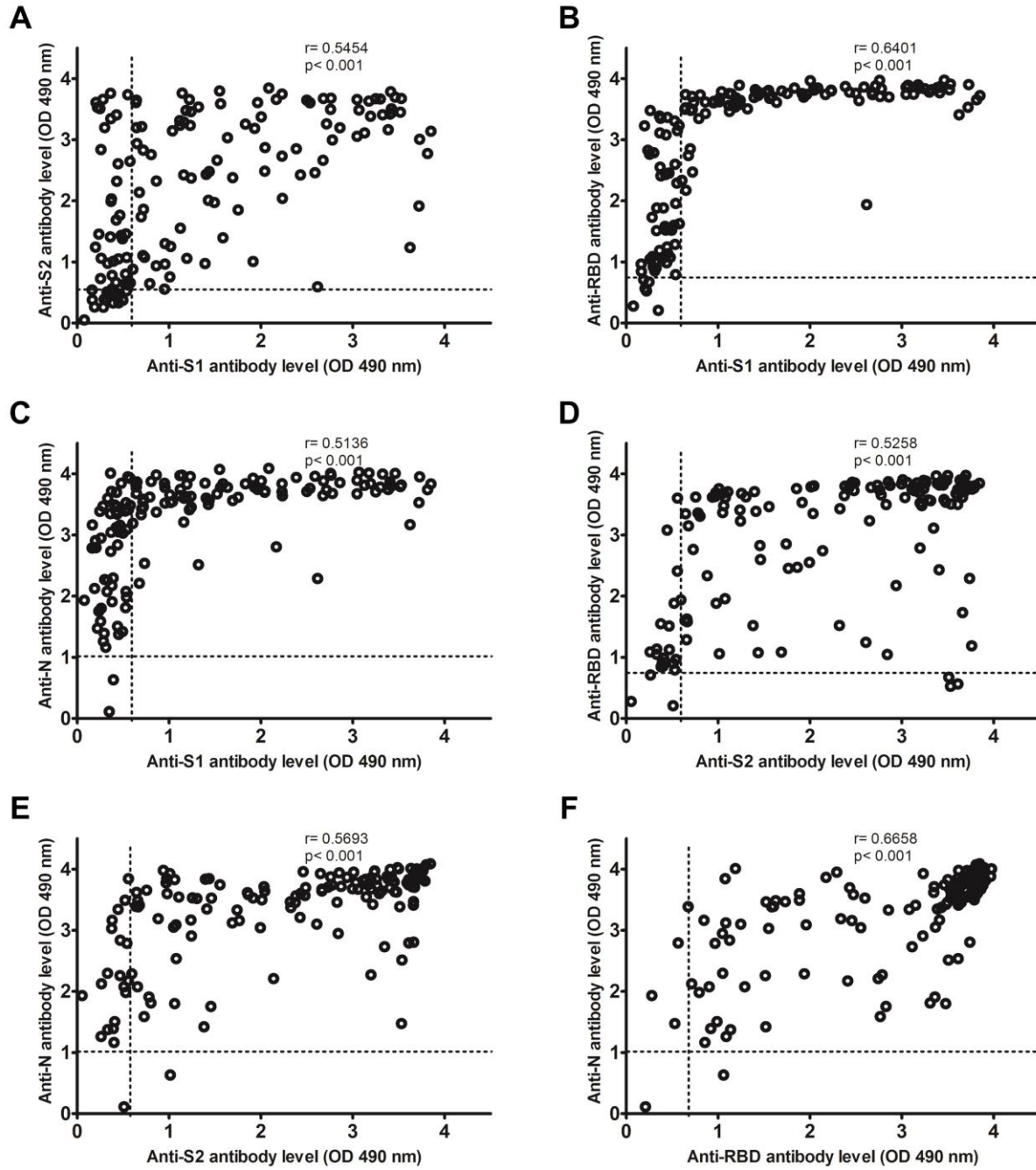
358

359

360

Fig 5

Brochot et al.



361

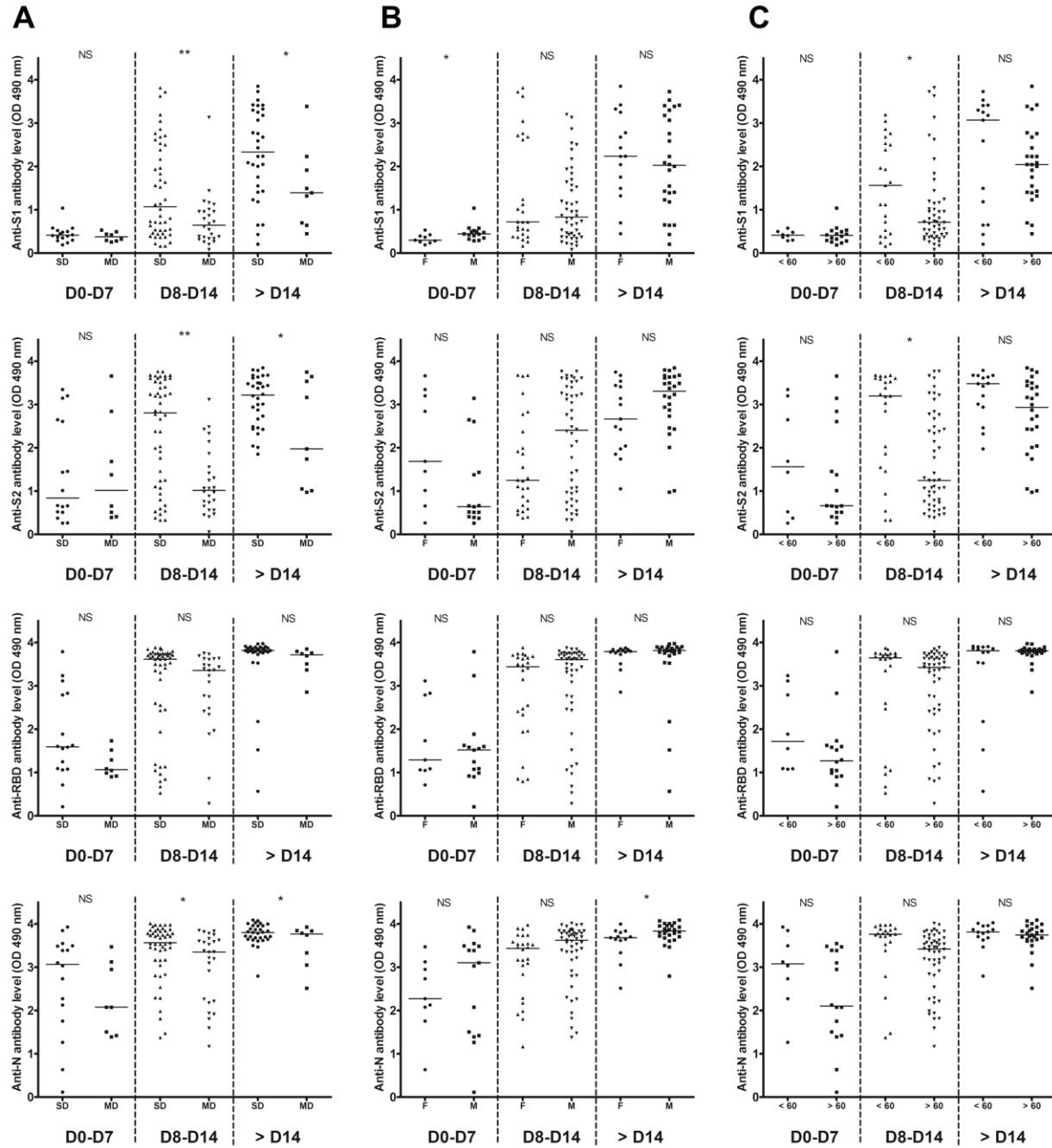
362

363

364

### Supplementary Fig 1

Brochot et al.



365

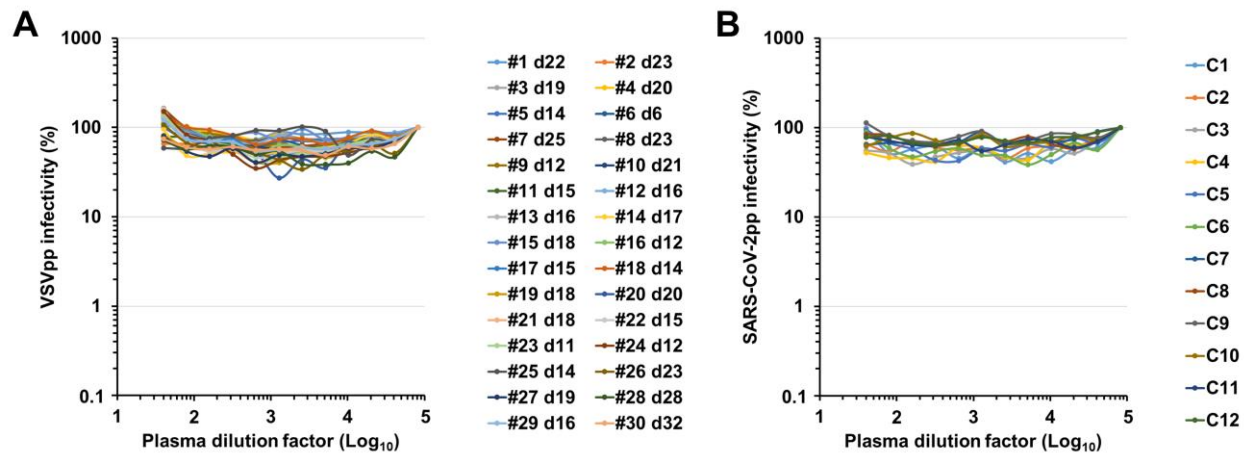
366

367

368

Supplementary Fig 2

Brochot et al.



369

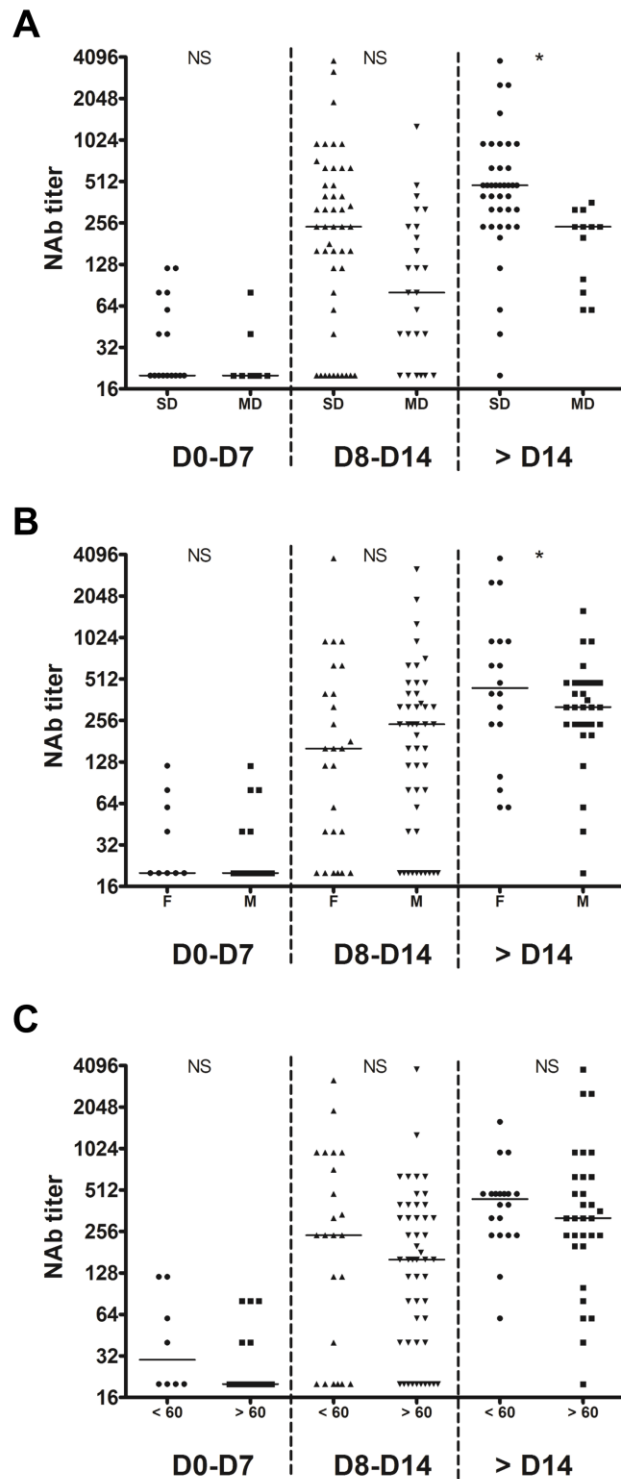
370

371

372

### Supplementary Fig 3

Brochot et al.



373

374

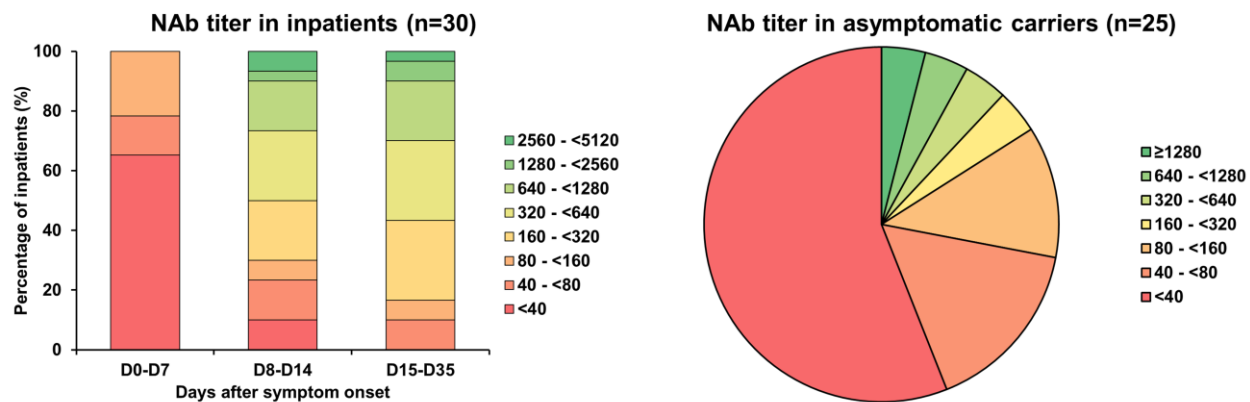
375

376

Supplementary Fig 4

Brochot et al.

## Neutralizing antibody response in SARS-CoV-2 infected patients



377

378

379

### Graphical Abstract