

1 **Title:** Feasibility of SARS-CoV-2 virus detection from consumer-grade cotton swabs

2 **Running Title:** Alternative swabs for COVID-19 screening

3 **Keywords:** COVID-19, SARS-CoV-2, RT-qPCR, swab, global health

4

5 Jeremiah J. Minich¹, Farhana Ali², Clarisse Marotz³, Pedro Belda-Ferre³, Leslie Chiang⁴, Justin P.

6 Shaffer³, Carolina S. Carpenter⁵, Daniel McDonald³, Jack Gilbert^{3,5,6}, Sarah M. Allard³, Rob Knight^{3,5,7,8},

7 Daniel A. Sweeney⁹, Austin D. Swafford^{5*}

8 1. Marine Biology Research Division, Scripps Institution of Oceanography, University of California San
9 Diego, La Jolla, CA, USA.

10 2. Division of Gastroenterology, Department of Pediatrics, University of California San Diego, La Jolla,
11 CA, USA.

12 3. Department of Pediatrics, School of Medicine, University of California San Diego, La Jolla, CA,
13 USA.

14 4. Division of Infectious Diseases, Department of Pediatrics, University of California San Diego, La
15 Jolla, CA, USA.

16 5. Center for Microbiome Innovation, University of California San Diego, La Jolla, CA, USA.

17 6. Scripps Institution of Oceanography, University of California San Diego, La Jolla, CA, USA.

18 7. Department of Computer Science and Engineering, University of California San Diego, La Jolla, CA,
19 USA.

20 8. Department of Bioengineering, University of California San Diego, La Jolla, CA, USA.

21 9. Division of Pulmonary, Critical Care, and Sleep Medicine, Department of Internal Medicine,
22 University of California, San Diego, La Jolla, CA, USA.

23 *Corresponding author: adswafford@ucsd.edu

24

25 **Abstract**

26 To control the growing COVID-19 pandemic, increased testing and containment is essential, yet clinical-

27 grade sampling supplies are expensive and rapidly being depleted. We demonstrate the feasibility of using

28 alternative consumer-grade swabs stored in 95% ethanol rather than viral transport media to detect SARS-

29 CoV-2 from ten hospitalized persons and hospital rooms.

30

31 **Background**

32 Severe acute respiratory syndrome coronavirus 2 (SARS-CoV-2) the causative agent of coronavirus disease
33 19 (COVID-19) has spread to 185 countries resulting in 278,892 deaths and 4,006,257 total confirmed cases
34 as of May 11, 2020 [1-2]. Large-scale testing remains key for controlling viral spread, but sample collection
35 supplies including swabs, viral transport media (VTM) and personal protective equipment (PPE) are being
36 depleted in developed nations like the United States, and are in even shorter supply in low- and middle-
37 income countries [3]. Validation of alternatives strategies such as self-administered testing using consumer-
38 grade materials is urgently needed.

39
40 Concerns about consumer-grade materials include the presence of contaminant RNases and/or PCR
41 inhibitors which would promote false negatives during evaluation for the presence of SARS-CoV-2 RNA
42 by reverse transcription and quantitative polymerase chain reaction (RT-qPCR) as noted in the U.S. Centers
43 for Disease Control (CDC) guidance for testing [4]. Similarly, the CDC-recommended VTM requires
44 specialized ingredients and contains antimicrobials likely to interfere with downstream assessment of the
45 microbial context of SARS-CoV-2 that may enable new insights into viral susceptibility and resistance [5].
46 VTM also maintains viral viability and therefore requires processing in a facility with more stringent
47 biosafety practices compared to inactivating collection methods. Using inactivating sample collection
48 solutions could increase the number of testing laboratories and ameliorate the risks associated with sample
49 transport and processing. Here we demonstrate the feasibility of detecting SARS-CoV-2 RNA from patient
50 and built-environment samples using viral-inactivating storage solutions and alternative medical-grade and
51 consumer-grade swabs.

52

53 **Methods**

54 *Swab feasibility testing*

55 Six swab types were compared and processed following the standard SARS-CoV-2 protocol provided by
56 the CDC [6] (Supplementary Methods). These swab types are: sterile polyester-head, plastic-shaft ('PE'),

57 sterile foam-head, plastic-shaft ('BDF'), non-sterile cotton-head, plastic-shaft ('TMI'), non-sterile cotton-
58 head plastic-shaft consumer-grade ('CGp'), non-sterile cotton-head wooden-shaft consumer-grade
59 ('CGw'), and non-sterile cotton-head, wooden-shaft ('Pu'). Suppliers and part numbers are provided in
60 Supplementary Methods.

61

62 *Patient and hospital environmental sampling*

63 This study was performed with approval of the UC San Diego Institutional Review Board under protocols
64 #150275 and #200613. All study participants were diagnosed and hospitalized with COVID-19, and both
65 nasal samples and hospital surfaces were collected using three unmoistened swab types (PE, TMI, CGp)
66 immediately placed in a collection tube containing 95% EtOH and stored on dry ice. Collection details and
67 sample processing are provided in the Supplementary Methods.

68

69 **Results:**

70 We compared the efficiency of extracting and processing RNA from 200 μ L of VTM eluent surrounding
71 polyester-tipped plastic-shafted nasopharyngeal (NP) swabs (CDC protocol) to more accessible nares
72 samples collected using PE swabs stored in viral-inactivating alcohol. RNA extraction efficiency was
73 significantly reduced from samples stored in 95% EtOH when extracted from the eluent (n=22), but similar
74 when extracted from the swab head itself (n=18) compared to the CDC protocol (n=39) (Figure 1a).
75 Extracting from the swab head also provided significantly higher SARS-CoV-2 viral load compared to the
76 EtOH eluent of the same patient samples (n=7) (Figure 1b, p=0.032). We separately compared the use of
77 95% EtOH vs 91% isopropanol as the storage media with human RNA and found no impact on extraction
78 efficiency (32.1% and 35.3% recovery respectively) (ANOVA, P>0.05) (Figure 1c). However, in the
79 presence of abundant RNase, 95% EtOH protected both human RNA and SARS-CoV-2 RNA better than
80 91% isopropanol (Figure 1d).

81

82 We next tested RNA recovery from a range of medical- and consumer-grade swabs (Supplementary
83 Methods). The yield was highest from swab heads compared to eluent regardless of the swab type and
84 whether stored in 95% EtOH ($P < 0.0001$, $U = 37$, Mann-Whitney) or 91% isopropanol ($P < 0.0001$, $U = 28$,
85 Mann-Whitney) (Figure 1e-f). The storage solution did not impact RNA quality (Supplemental Figure 1b,
86 Mann-Whitney, $P > 0.05$), though swab type had a minor impact (Supplemental Figure 1c, Kruskal-Wallis
87 $P = 0.0325$, $KW = 12.17$) [6]. RNA recovery ratio of swab-to-eluent and total yield varied among swab type
88 ($P < 0.0001$, $KW = 28.37$, Kruskal-Wallis for eluent, and $P < 0.0001$, $KW = 15.43$, Kruskal-Wallis for swab-
89 heads) (Supplemental Figure 2). CGp swabs had the highest recovery from the swab head, while TMI swabs
90 had the highest overall recovery of RNA from both eluent and direct swab extractions (Supplemental Figure
91 2). Swab type did not impact the ability to detect a linear decrease of positive control human and SARS-
92 CoV-2 RNA when extracting directly from either CDC-recommended PE swabs or CGp swabs
93 (Supplemental Figure 3).

94
95 As a clinical proof-of-concept, we collected samples from ten participants admitted to the hospital for
96 COVID-19 using TMI and/or CGp swabs alongside the recommended PE swabs, and performed RT-qPCR
97 per CDC guidelines. All three swab types successfully detected positive control SARS-CoV-2 RNA except
98 for one false negative CGp, and no false positives (Supplemental Figure 4). For this comparison, samples
99 inconclusive solely for the SARS-CoV-2 N2 amplicon (I-N2 in Figure 1g) were considered positive for the
100 presence of SARS-CoV-2 RNA based on observed and reported concerns with this primer set [7]. PE swabs
101 were 100% concordant with NP results when extracting from the swab head compared to 67% concordance
102 for eluent from the same samples. TMI swabs were 85% and 57% concordant while CGp were 70% and
103 56% concordant for swab head and eluent respectively (Figure 1g). To evaluate contamination of SARS-
104 CoV-2 RNA on environmental surfaces, we collected and compared swabs from the inside floor and bedrail
105 of the same participants' rooms using the same swab types [8]. Only 3/10 bedrails had detectable SARS-
106 CoV-2 with any swab type, while floor samples tested positive for SARS-CoV-2 RNA for at least one swab

107 type in 9/10 rooms (Figure 1g). Overall, the concordance between PE swabs was ~84% both for CGp
108 (25/30) and TMI (22/26) across participant and environmental samples (Figure 1d).

109

110 **Discussion:**

111 We provide evidence that nasal samples collected using more widely-available consumer-grade cotton-
112 tipped swabs can be stored in viral-inactivating alcohol without compromising the ability to detect SARS-
113 CoV-2. The sensitivity for detection of SARS-CoV-2 RNA was comparable between the hospital NP swabs
114 (CDC protocol) and both TMI and CGp nasal swabs when extracting from the swab head. Negative NP
115 results for previously positive participants may be due to viral clearance, the timing of sampling during the
116 course of infection or inconsistencies among the standard NP swabs. Of note, wooden-shafted swabs
117 performed poorly only when extracting from the eluent, suggesting that RNA adsorption onto the shaft
118 rather than RT-qPCR inhibitors may be the source of interference with current eluent-based testing
119 methods.

120 Cotton-tipped swabs and alcohol-based solutions are compatible with standard microbiome and
121 metabolome analyses prohibited by VTM, and could enable more widespread assessment for SARS-CoV-
122 2 RNA in human and environmental samples. SARS-CoV-2 was only detected on 30% of participants'
123 bedrails, which may have been due to routine cleaning measures and/or minimal interaction with the
124 surfaces from heavily-sedated or intubated patients. This may be present a challenge for monitoring shared
125 surfaces between the healthcare worker and patients. In contrast, the detection of SARS-CoV-2 RNA from
126 the floor samples demonstrates a potentially important reservoir for viral exposure, as shoe covers are not
127 currently recommended by the CDC. However, additional testing is needed to determine whether viable
128 virus remains on these surfaces.

129 In summary, our results suggest detection of SARS-CoV-2 RNA could be performed using less expensive,
130 consumer-grade materials. We add to the emerging body of literature supporting nasal sampling as opposed
131 to NP sampling [10–14]. It is conceivable that patients could collect samples at home, thus reducing risk

132 and saving the use of PPE for healthcare workers. Further confirmatory studies using consumer-grade swabs
133 would greatly support COVID-19 screening worldwide, particularly in resource-limited settings.

134

135 **Funding:**

136 This work was supported by the UC San Diego Center for Microbiome Innovation (CMI). JJM is supported
137 by the National Science Foundation Center for Aerosol Impacts on Chemistry of the Environment
138 #1801971. CM is supported by NIDCR NRSA F31 Fellowship 1F31DE028478-01. PBF is partially funded
139 through trainee support from Sanitarium Health and Wellbeing in partnership with the CMI. DM is partially
140 funded by support from Danone Nutricia Research in partnership with the CMI.

141

142 **Acknowledgements:**

143 We thank research participants who donated samples, the health care professionals who assisted in the
144 collection of samples, and Alison Vrbanac, Louis-Felix Nothias-Scaglia, and Shi Huang for assistance in
145 transportation and Dominic Nguyen for sampling kit preparation. This research benefited tremendously
146 from lessons learned and techniques developed in the Sloan Microbiology of the Built Environment (MoBE
147 program). We thank Stanley T. Motley for early discussion on nucleic acid stability, Sandrine Miller-
148 Montgomery for guidance in RT-qPCR analyses. We thank Thomas F. Rogers and Nathan Beutler for
149 providing the SARS-CoV-2 viral RNA used as a control in this study and David Pride for supplying samples
150 from NP swabs in VTM for our comparisons.

151 The authors have no conflict of interest related to the work described in this manuscript.

152

153

154 **References:**

155 1. Andersen KG, Rambaut A, Lipkin WI, Holmes EC, Garry RF. The proximal origin of SARS-CoV-2.

- 156 Nat Med **2020**; 26:450–452.
- 157 2. Coronavirus disease 2019 (COVID-19) Situation Report – 112. WHO, 2020. Available at:
158 [https://www.who.int/docs/default-source/coronaviruse/situation-reports/20200511-covid-19-sitrep-](https://www.who.int/docs/default-source/coronaviruse/situation-reports/20200511-covid-19-sitrep-112.pdf?sfvrsn=813f2669_2)
159 [112.pdf?sfvrsn=813f2669_2](https://www.who.int/docs/default-source/coronaviruse/situation-reports/20200511-covid-19-sitrep-112.pdf?sfvrsn=813f2669_2).
- 160 3. Global coalition to accelerate COVID-19 clinical research in resource-limited settings. The Lancet.
161 2020; Available at: [http://dx.doi.org/10.1016/s0140-6736\(20\)30798-4](http://dx.doi.org/10.1016/s0140-6736(20)30798-4).
- 162 4. Oropharyngeal 1., Swabs N. Collection of Upper Respiratory Tract Specimens. Available at:
163 <https://www.cdc.gov/urdo/downloads/SpecCollectionGuidelines.pdf>.
- 164 5. Centers for Disease Control and Prevention. Centers for Disease Control and Prevention SOP#:
165 DSR-052-02- PREPARATION OF VIRAL TRANSPORT MEDIUM. 2020. Available at:
166 <https://www.cdc.gov/coronavirus/2019-ncov/downloads/Viral-Transport-Medium.pdf>. Accessed 24
167 April 2020.
- 168 6. Schroeder A, Mueller O, Stocker S, et al. The RIN: an RNA integrity number for assigning integrity
169 values to RNA measurements. BMC Mol Biol **2006**; 7:3.
- 170 7. Marx V. Coronavirus jolts labs to warp speed. Nat Methods **2020**; 17:465–468.
- 171 8. van Doremalen N, Bushmaker T, Morris DH, et al. Aerosol and Surface Stability of SARS-CoV-2 as
172 Compared with SARS-CoV-1. N Engl J Med **2020**; 382:1564–1567.
- 173 9. Pan Y, Zhang D, Yang P, Poon LLM, Wang Q. Viral load of SARS-CoV-2 in clinical samples.
174 Lancet Infect Dis **2020**; 20:411–412.
- 175 10. Xie C, Lu J, Wu D, et al. False negative rate of COVID-19 is eliminated by using nasal swab test.
176 Travel Med Infect Dis **2020**; :101668.

- 177 11. Yu F, Yan L, Wang N, et al. Quantitative Detection and Viral Load Analysis of SARS-CoV-2 in
178 Infected Patients. *Clin Infect Dis* **2020**; Available at: <http://dx.doi.org/10.1093/cid/ciaa345>.
- 179 12. Petruzzi G, De Virgilio A, Pichi B, et al. COVID -19: Nasal and oropharyngeal swab. *Head & Neck*.
180 2020; Available at: <http://dx.doi.org/10.1002/hed.26212>.
- 181 13. Péré H, Podglajen I, Wack M, et al. Nasal swab sampling for SARS-CoV-2: A convenient
182 alternative in time of nasopharyngeal swab shortage. *Journal of Clinical Microbiology*. 2020;
183 Available at: <http://dx.doi.org/10.1128/jcm.00721-20>.
- 184 14. Tu Y-P, Jennings R, Hart B, et al. Patient-collected tongue, nasal, and mid-turbinate swabs for
185 SARS-CoV-2 yield equivalent sensitivity to health care worker collected nasopharyngeal swabs.
186 Available at: <http://dx.doi.org/10.1101/2020.04.01.20050005>.
- 187 15. CDC. Coronavirus Disease 2019 (COVID-19). 2020. Available at:
188 <https://www.cdc.gov/coronavirus/2019-ncov/lab/rt-pcr-panel-primer-probes.html>. Accessed 21 April
189 2020.
- 190 16. CDC/DDID/NCIRD/ Division of Viral Diseases. CDC 2019-Novel Coronavirus (2019-nCoV) Real-
191 Time RT-PCR Diagnostic Panel. **2020**; Available at: <https://www.fda.gov/media/134922/download>.
- 192

193 **Figure Legends**

194 **Figure 1. Validation of alternative swabs and storage buffer (95% EtOH and 91% isopropanol) in**
195 **RNA recovery and detection of COVID-19.**

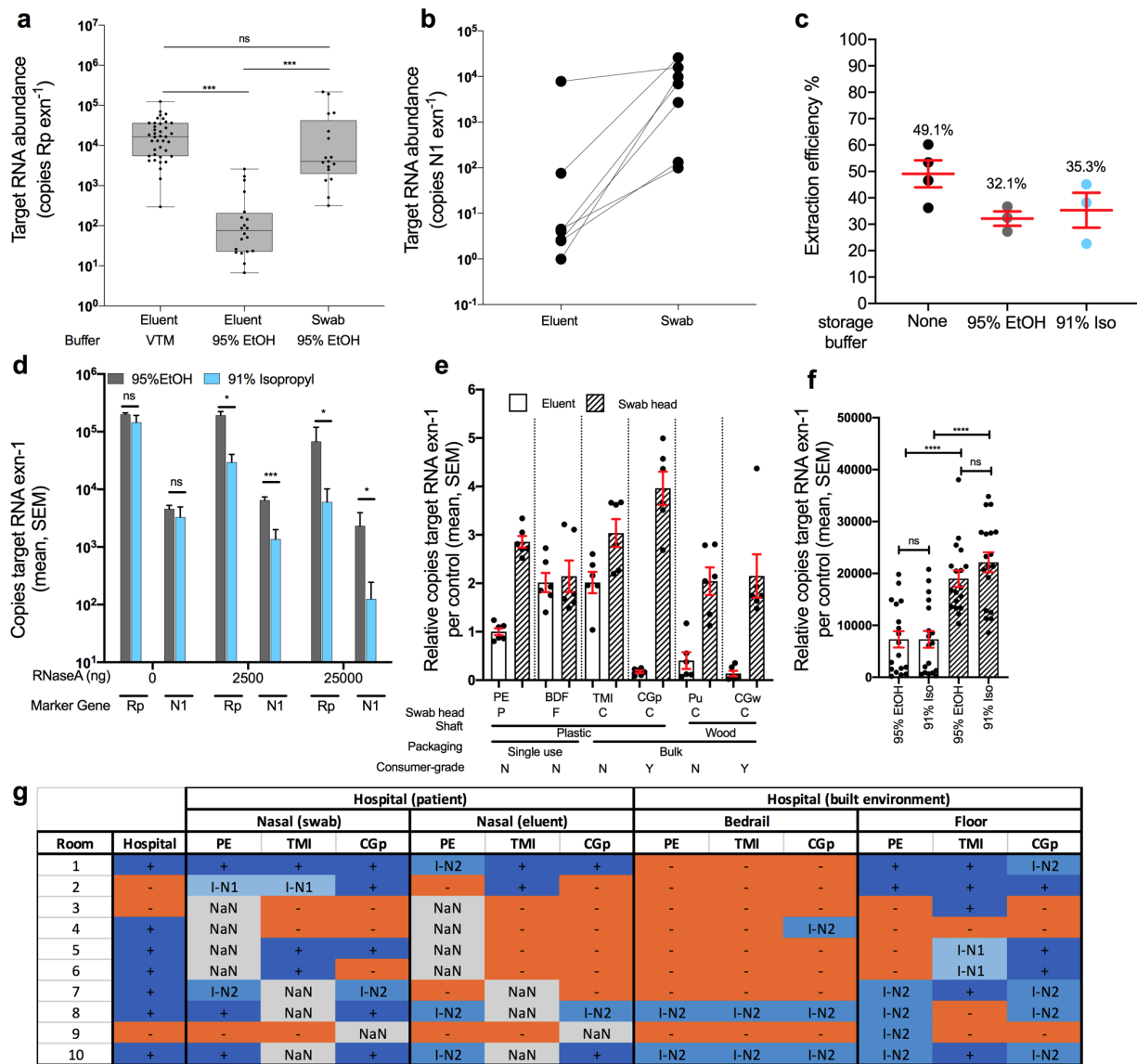
196 **a)** Human RNase P gene (Rp) RNA extraction control comparison across sample types. Clinical gold-
197 standard polyester-tipped plastic-shaft NP swabs stored in VTM and extracted from 200 μ L of eluent
198 (left, n=39) have significantly lower higher copy numbers compared to 200 μ L EtOH eluent from PE
199 nares swabs (middle, n=22), but not when extracted from the EtOH-preserved swab head (right, n=18).
200 One-way ANOVA with Tukey's multiple comparison VTM eluent vs EtOH eluent $p < 0.001$, EtOH
201 eluent vs EtOH swab $p < 0.001$, VTM vs EtOH swab $p = 0.266$. **b)** Extrapolated viral RNA copy number
202 from nares samples collected with BD polyester swabs in the hospital stored in 95% EtOH and extracted
203 from either the eluent or swab from the same sample (one-tailed paired Student's T-test $p = 0.032$). **c)**
204 Proportion of recovered RNA across three storage buffers: None, 95% EtOH, and 91% isopropanol (ns,
205 ANOVA $p > 0.05$). **d)** Evaluation of RNaseA inhibition by 95% EtOH (grey) and 91% isopropanol (blue)
206 (multiple t-test) using either the human Rp or SARS-CoV-2 N1 primer set. **e)** Comparison human RNA
207 recovery across six swab types (PE=polyester 'commercial', BDF=BD foam 'commercial', TMI=BD
208 TMI 'commercial', CGp=plastic 'consumer grade', Pu=Puritan 'commercial', CGw=wood 'consumer
209 grade'), extracted from 200 μ L eluent (blank bar) or the swab head. Recovery for each swab type is
210 normalized to the CDC recommended method (eluent from PE swab). A '2' would indicate there was 2x
211 more RNA recovered whereas a 0.5 would indicate a 50% reduction in RNA recovery. **f)** Total RNA
212 copies per extraction for all samples which are grouped by sample-type (eluent or swab head) and storage
213 buffer (95% EtOH or 91% isopropanol). Pairwise comparisons performed within sample-type (not
214 significant) and across sample-type controlling for storage buffer (Mann-Whitney, U=test statistic). **g)**
215 Demonstration of consumer-grade CGp and bulk TMI swab congruence compared to clinical-grade
216 hospital tests using polyester-tipped plastic shafted NP swabs across ten patient rooms. Samples positive
217 (+, dark blue background) or negative (-, orange background) for N1, N2, and Rp by CDC guidelines.
218 Samples positive for N1 and Rp, but negative for N2 are labeled inconclusive for N2 (I-N2, blue) but

219 considered positive for comparisons. Samples positive for N2 and Rp, but negative for N1 (I-N1, light
 220 blue) are inconclusive. Samples not measured for a given patient are labeled as NaN (light grey). ($P < 0.05$
 221 = *, $P < 0.01$ = **, $P < 0.001$ = ***, $P < 0.0001$ = ****)

222

223 **Figures**

224 **Figure 1. Validation of alternative swabs and storage buffer (95% EtOH and 91% isopropanol) in**
 225 **RNA recovery and detection of COVID-19.**



226

227

228 **Supplementary Methods**

229 *VTM versus EtOH sample comparison*

230 Nasopharyngeal (NP) swabs were collected according to CDC guidelines and stored in viral transport
231 media (VTM). For comparison, sterile polyester-head, plastic-shaft ('PE', BBL Culture swab REF-
232 220135, Becton, Dickinson and Company) were used to collect nares samples by rotating the dry swab
233 head in the nares for approximately 30 seconds from lab members, patients, or healthcare workers, and
234 then immediately placed in 95% EtOH. Eluent nucleic acid extractions were performed on 200 μ L of the
235 swab eluent (either VTM or EtOH) using the Omega Mag-Bind® Viral DNA/RNA 96 Kit (catalog#
236 M6246-03), which only uses chemical lysis and does not include a bead beating step. For nucleic acid
237 extraction from the swab head, the MagMAX Microbiome Ultra kit (Cat#A42357, Thermo Fisher
238 Scientific) was used. For the direct comparison of SARS-CoV-2 extraction efficiency, we extracted EtOH
239 eluent and swab separately from the same samples of COVID-19 patients with approval of the UC San
240 Diego Institutional Review Board under protocols #150275 and #200613

241

242 *Patient and hospital environmental sampling*

243 All study patients were diagnosed and hospitalized with COVID-19 with approval of the UC San Diego
244 Institutional Review Board under protocols #150275 and #200613. Both nasal samples and hospital
245 surfaces were collected using three unmoistened swab types (PE, TMI, CGp; see Table 1). Nasal samples
246 were collected by inserting the swab into one nostril to the depth of approximately 2-3 cm and rotated for
247 5-10 seconds. Hospital surfaces sampled included the floor inside the patient's room (approximately 1x1
248 square foot area) and the patient's bedrail. All swabs were immediately placed in a collection tube
249 containing 0.5-1 mL 95% ethanol and stored on dry ice and processed for RNA or total nucleic acid
250 extraction (Supplementary Methods).

251

252 *RT-qPCR for VTM and 95% EtOH comparison using polyester-tipped plastic swabs*

253 SARS-CoV-2 detection was performed following a slightly miniaturized version of the CDC protocol.
254 Each RT-qPCR reaction contained 4µl RNA template, 100nm forward and reverse primers, 200nm probe,
255 3µl TaqPath (catalog# A15299, Thermo), and RNase free water to a total reaction volume of 10µl. All
256 primers and probes were ordered from IDT (catalog# 10006606). RT-qPCR was performed on the Bio-
257 rad CFX384 Touch Real-Time PCR Detection System following the CDC thermocycling guidelines.
258 Serial dilutions of the Hs_RPP30 Positive Control plasmid (catalog# 10006626, IDT) or 2019-
259 nCoV_N_Positive Control plasmid (catalog# 10006625, IDT) were included to extrapolate human
260 RNase P and SARS-CoV-2 copy numbers, respectively.

261

262 *Alternative swab list*

263 Six swab types were used: sterile polyester-head, plastic-shaft ('PE', BBL Culture swab REF-220135,
264 Becton, Dickinson and Company); sterile foam-head, plastic-shaft ('BDF', Flock PurFlock REF-25-3606-
265 U-BT, Becton, Dickinson and Company); non-sterile cotton-head, plastic-shaft in use by The Microsetta
266 Initiative ('TMI', SKU#839-PPCS, Puritan Medical Products); non-sterile cotton-head plastic-shaft
267 consumer-grade ('CGp' Part #165902, CVS Caremark Corp.); non-sterile cotton-head wooden-shaft
268 consumer-grade ('CGw', Part#858948, CVS Caremark Corp.); and non-sterile cotton-head, wooden-shaft
269 ('Pu', REF-806-WC, Puritan Medical Products).

270

271 *Controls for RNA extraction efficiency testing*

272 Approximately 600 ng of purified, DNA-free human lung RNA (Cat#AM7968, Thermo Fisher Scientific)
273 was pipetted onto each of the six swab types in triplicate and stored in two storage solutions (500 µL 95%
274 ethanol (EtOH) and 500 µL 91% isopropanol). Two sets of six, 10-fold serial dilutions of human RNA
275 were included as controls. The same quantity of RNA (600 ng) was added to either 95% EtOH (n=6) or
276 91% isopropanol (n=6) in the presence of 25 µg RNaseA to determine the resistance offered against
277 RNase contaminants. Four negative (swab only) and four positive (swab + 500 ng spiked human RNA + 5

278 μL spiked SARS-CoV-2 RNA $\sim 20,000$ copies per μL) controls were included, in addition to three, 10-fold
279 serial dilutions of this mixture in 95% EtOH.

280

281 *Extraction and RT-qPCR of hospital swabs and controls*

282 All samples were processed according to the manufacturer's protocol using the MagMAX Microbiome
283 Ultra kit (Cat#A42357, Thermo Fisher Scientific) and eluted into 70 μL buffer. For RT-qPCR, 5 μL
284 sample was processed in duplicate with averaged Ct values, using the standard SARS-CoV-2 protocol
285 provided by the CDC (Cat# 2019-nCoV-EUA-01[15]). Both the swab head and 200 μL of eluent were
286 processed for nasal samples, but only the swab head was processed for floor, bedrail and spiked control
287 samples using the same methods.

288

289 *Statistics and visualizations*

290 Visualizations and statistical comparisons performed using PRISM 8.0 and the limit of detection
291 determination were consistent with CDC recommendations whereby samples with a Ct value greater than
292 40 are omitted [16].

293

294 **Supplementary Figures Legends**

295 **Supplemental S1. Impacts of storage solution or swab type on RNA quality as measured by RNA**

296 **Tapestation High Sensitivity kit.** a) All direct-swab extracted RNA grouped by storage buffer and swab

297 type. b) Samples grouped by storage buffer, no significant difference in RNA integrity number (RIN)

298 values between storage buffers (95% EtOH vs. 91% isopropanol) (Mann-Whitney). c) Swab extracts

299 grouped by swab type only and compared to determine if swab type has an impact on RNA quality

300 (Kruskal-Wallis test).

301

302 **Supplemental Figure S2. Impacts of sample-type (eluent vs. swab head) on RNA recovery by swab**

303 **used.** Comparison human RNA recovery across six swab types (PE=polyester ‘commercial’, BDF=BD

304 foam ‘commercial’, TMI=BD TMI ‘commercial’, CGp=plastic ‘consumer grade’, Pu=Puritan

305 ‘commercial’, CGw=wood ‘consumer grade’), **a)** extracted from 200 μ L eluent or **b)** swab head (Group

306 comparison using Kruskal-Wallis)

307

308 **Supplemental Figure 3. Demonstration of impact of swab or storage buffer on human RNA and**

309 **SARS-CoV-2 detection.** **a)** Positive (swab + SARS-CoV-2 RNA + human RNA, n=4) and negative

310 (swab only, n=4) controls from hospital processing experiment. **b)** Serial dilution of positive controls in

311 95% EtOH to demonstrate conserved extraction efficiency across biomass. Three swab types: circle=PE,

312 square=CGp, triangle=TMI.

313

314 **Supplemental Figure 4. Hospital built environment and patient screen for SARS-CoV-2.**

315 Demonstration of consumer-grade CGp and bulk TMI swab congruence compared to CDC polyester in a

316 hospital setting across ten patient rooms and three sampling environments (bedrail, floor, and nasal swab)

317 including negative and positive controls. Samples positive (+, dark blue background) or negative (-,

318 orange background) for N1, N2, and Rp by CDC guidelines. Samples positive for N1 and Rp, but

319 negative for N2 are labeled inconclusive for N2 (I-N2, blue) but considered positive for comparisons.

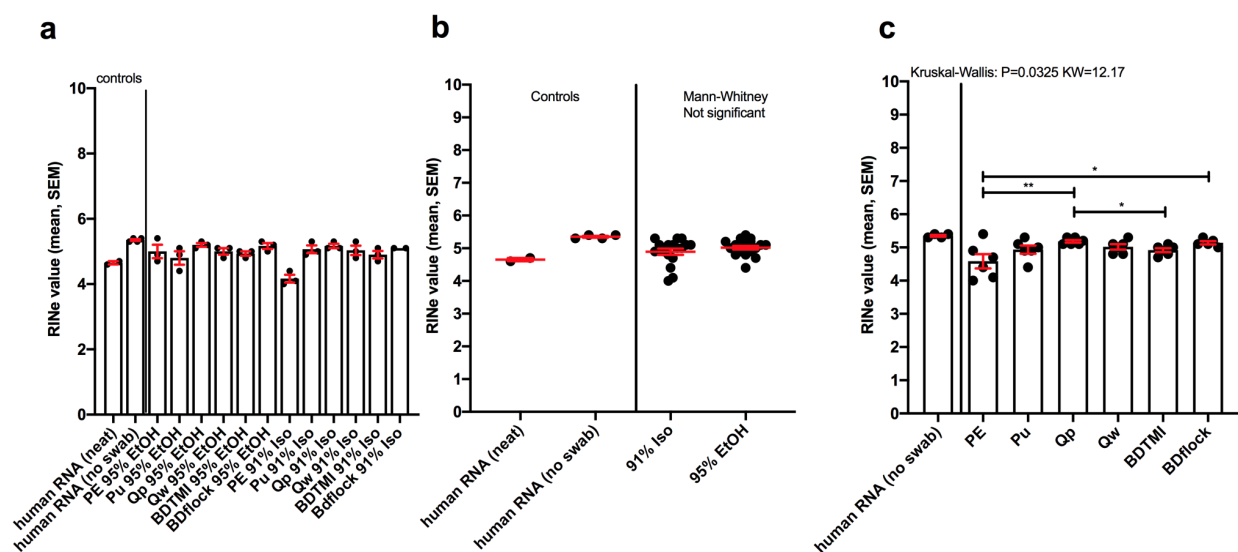
320 Samples positive for N2 and Rp, but negative for N1 (I-N1, light blue) are inconclusive. Samples not
 321 measured for a given patient are labeled as NaN (light grey). All data except controls are identical
 322 those in Figure 1g.

323

324 **Supplementary Figures**

325 **Supplemental S1. Impacts of storage solution or swab type on RNA quality as measured by RNA**

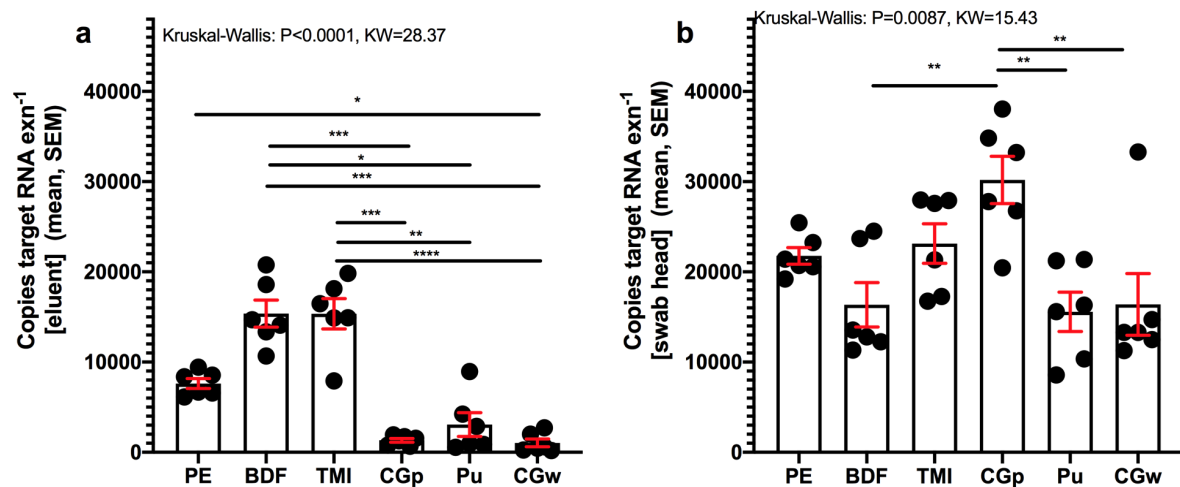
326 **Tapestation High Sensitivity kit.**



327

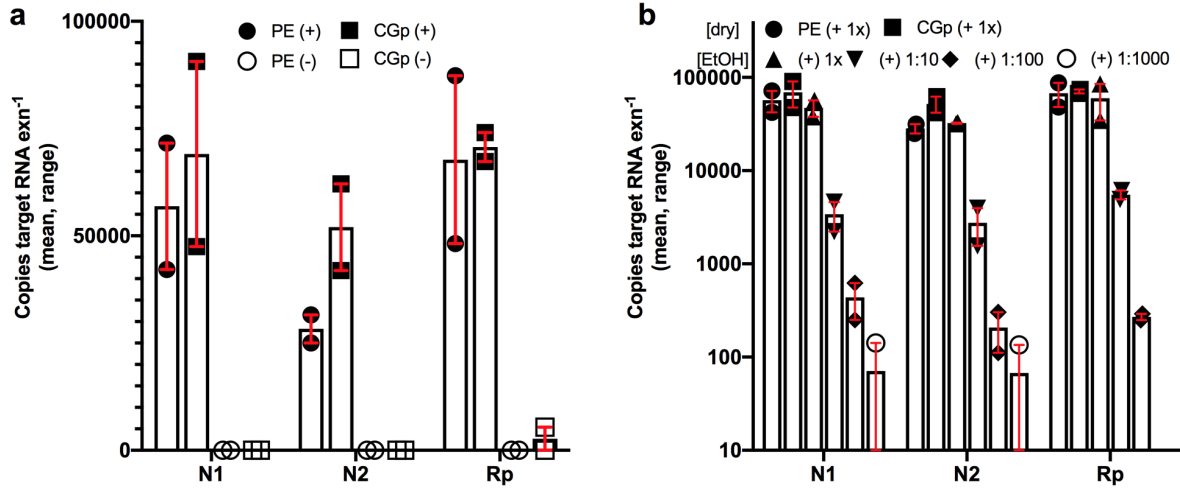
328

329 **Supplemental Figure S2. Impacts of sample-type (eluent vs. swab head) on RNA recovery.**



330

331 **Supplemental Figure 3. Demonstration of impact of swab or storage buffer on human RNA and**
 332 **SARS-CoV-2 detection.**



333

334

335 **Supplemental Figure 4. Hospital built environment and patient screen for SARS-CoV-2.**

Room	Hospital	Experimental						Hospital (Built Environment)						Hospital (patient)					
		- controls			+ controls			bedrail			floor			nasal (swab)			nasal (Eluent)		
		PE	TMI	CGp	PE	TMI	CGp	PE	TMI	CGp	PE	TMI	CGp	PE	TMI	CGp	PE	TMI	CGp
1	+	-	-	-	+	+	+	-	-	-	+	+	I-N2	+	+	+	I-N2	+	+
2	-	-	-	-	+	+	+	-	-	-	+	+	+	I-N1	+	+	-	+	+
3	-	-	-	-	+	+	+	-	-	-	-	+	+	NaN	-	-	NaN	-	-
4	+	-	-	-	+	+	+	-	-	I-N2	-	-	-	NaN	-	-	NaN	-	-
5	+	-	-	-	+	+	+	-	-	-	-	-	-	NaN	+	+	NaN	+	-
6	+	-	-	-	+	+	+	-	-	-	-	-	-	NaN	+	+	NaN	-	-
7	+	-	-	-	I-N2	+	I-N2	-	-	-	I-N2	+	I-N2	I-N2	NaN	+	I-N2	-	NaN
8	+	-	-	-	I-N2	I-N2	-	I-N2	I-N2	I-N2	I-N2	-	I-N2	+	NaN	+	I-N2	NaN	I-N2
9	-	NaN	NaN	NaN	NaN	NaN	NaN	I-N2	I-N2	I-N2	I-N2	-	I-N2	-	-	NaN	-	-	NaN
10	+	NaN	NaN	NaN	NaN	NaN	NaN	I-N2	I-N2	I-N2	I-N2	+	I-N2	+	NaN	+	I-N2 (low)	NaN	+

336

337