

Higher Air Temperature, Pressure, and Ultraviolet Are Associated with Less Covid-19 Incidence

Hisato Takagi, M.D., Ph.D., Toshiki Kuno, M.D., Ph.D., Yujiro Yokoyama, M.D., Hiroki Ueyama, M.D., Takuya Matsushiro, M.D. Yosuke Hari, M.D., Tomo Ando, M.D.

Shizuoka Medical Center, Shizuoka, Japan (HT, TM, YH), Mount Sinai Beth Israel Medical Center, New York, NY, USA (TK, HU), Easton Hospital, Easton, PA, USA (YY), New York Presbyterian Hospital/Columbia University Medical Center, New York, NY, USA (TA)

Abstract

A recent study from China suggests that high temperature and ultraviolet (UV) radiation cannot decrease the epidemics of Coronavirus disease 2019 (Covid-19). To determine whether COVID-19 incidence is modulated by meteorological factors, meta-regression of Japanese prefectural data was herein conducted. We extracted 1) cumulative numbers of confirmed Covid-19 patients in each Japanese prefecture from January to April 2020; 2) populations per 1-km² inhabitable area in each prefecture in 2020; and 3) meteorological factors at each prefectural capital city from January to April 2020. Meteorological factors included monthly mean air temperature (°C), wind speed (m/s), sea level air pressure (hPa), relative humidity (%), and percentage of possible sunshine (%); monthly total of sunshine duration (h) and precipitation (mm); and monthly mean daily maximum ultraviolet (UV) index. To adjust for prefectural population density, we defined the incidence of Covid-19 as the cumulative number of Covid-19 patients divided by the population per 100-km² inhabitable area. Random-effects meta-regression was performed, and its graph depicted Covid-19 incidence (plotted as the logarithm transformed incidence on the y-axis) as a function of a given meteorological factor (plotted on the x-axis). A slope of the meta-regression line was significantly negative as a function of the mean air temperature (coefficient, -0.127 ; $P = 0.023$), the mean sea level air pressure (coefficient, -0.351 ; $P < 0.001$), and the mean daily maximum UV index (coefficient, -0.001 ; $P = 0.012$) which indicated that Covid-19 incidence decreased significantly as air temperature, air pressure, and UV increased. In conclusion, higher air temperature, air pressure, and UV may be associated with less Covid-19 incidence.

Introduction

In Northern Europe, low air temperature and ultraviolet (UV) index have been reported as the most important meteorological predictors for the transmission of influenza virus.¹ Whereas, a recent study from China suggests that high temperature and UV radiation cannot decrease the epidemics of Coronavirus disease 2019 (Covid-19).² To determine whether COVID-19 incidence is modulated by meteorological factors, meta-regression of Japanese prefectural data was herein conducted.

Methods

We extracted 1) cumulative numbers of confirmed Covid-19 patients in each Japanese prefecture from January to April 2020 (Ministry of Health, Labour and Welfare; <https://www.mhlw.go.jp/content/10906000/000627448.pdf>); 2) populations per 1-km² inhabitable area in each prefecture in 2020 (Statistics of Japan; <https://www.e-stat.go.jp/en/stat-search/files?page=1&layout=datalist&toukei=00200502&tstat=000001137306&cycle=0&year=20200&month=0&tclass1=000001137307>); and 3) meteorological factors at each prefectural capital city from January to April 2020 (Japan Meteorological Agency; <https://www.data.jma.go.jp/obd/stats/data/en/smp/index.html>, https://www.data.jma.go.jp/gmd/env/uvhp/link_uvindex_month54.html) (Supplementary Table 1). Meteorological factors included monthly mean air temperature (°C), wind speed (m/s), sea level air pressure (hPa), relative humidity (%), and percentage of possible sunshine (%); monthly total of sunshine duration (h) and precipitation (mm); and monthly mean daily maximum ultraviolet (UV) index. To adjust for prefectural population density, we defined the incidence of Covid-19 as the

cumulative number of Covid-19 patients divided by the population per 100-km² inhabitable area. Random-effects meta-regression was performed using OpenMetaAnalyst (<http://www.cebm.brown.edu/openmeta/index.html>). A meta-regression graph depicted Covid-19 incidence (plotted as the logarithm transformed incidence on the y-axis) as a function of a given meteorological factor (plotted on the x-axis).

Results and Conclusion

A slope of the meta-regression line (Fig. 1) was significantly negative as a function of the mean air temperature (coefficient, -0.127 ; $P = 0.023$), the mean sea level air pressure (coefficient, -0.351 ; $P < 0.001$), and the mean daily maximum UV index (coefficient, -0.001 ; $P = 0.012$) which indicated that Covid-19 incidence decreased significantly as air temperature, air pressure, and UV increased.

The present meta-regression suggests that air temperature, air pressure, and UV may be negatively associated with COVID-19 incidence. A recent Chinese study has reported no association of COVID-19 epidemics with temperature and UV radiation,² which, however, may be denied by the present findings of the negative association of air temperature, air pressure, and UV with COVID-19 incidence in Japan.

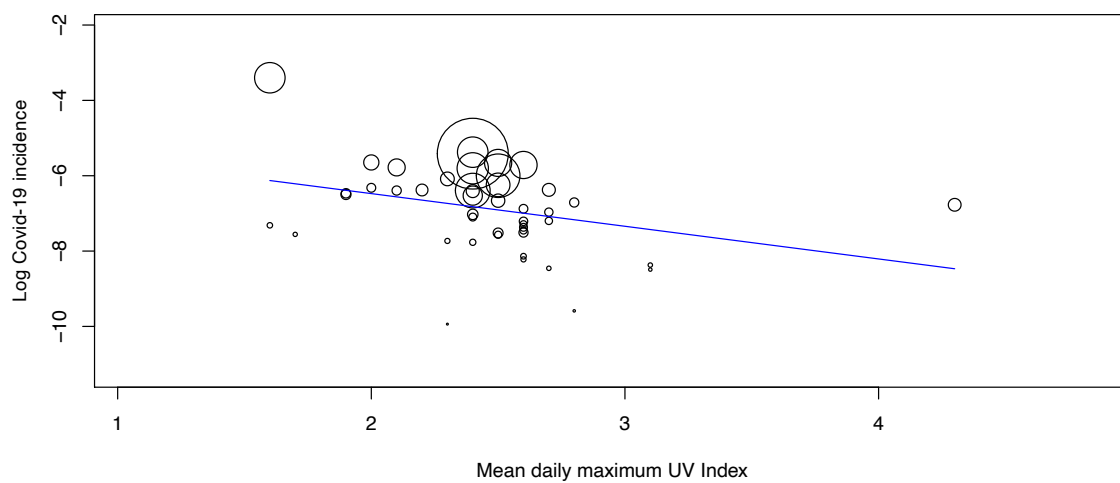
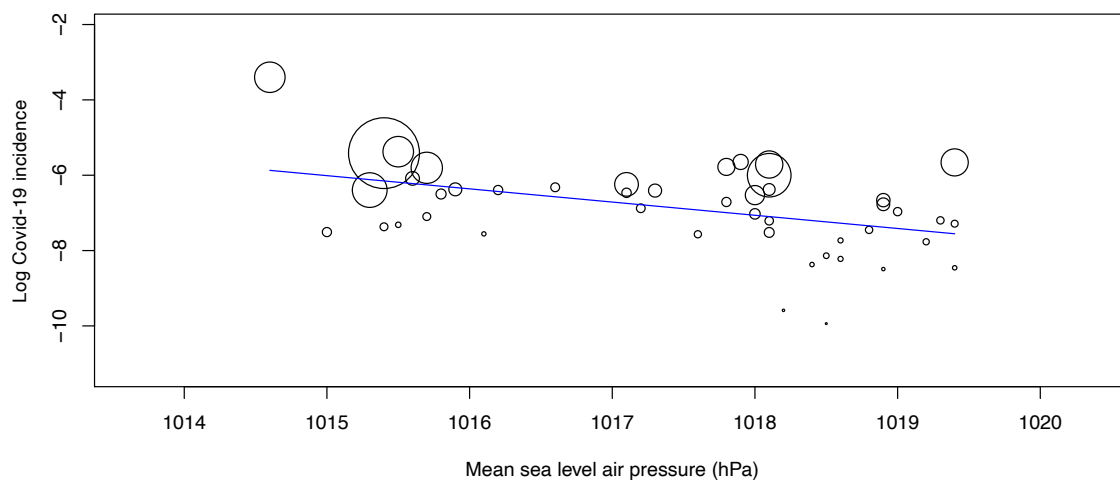
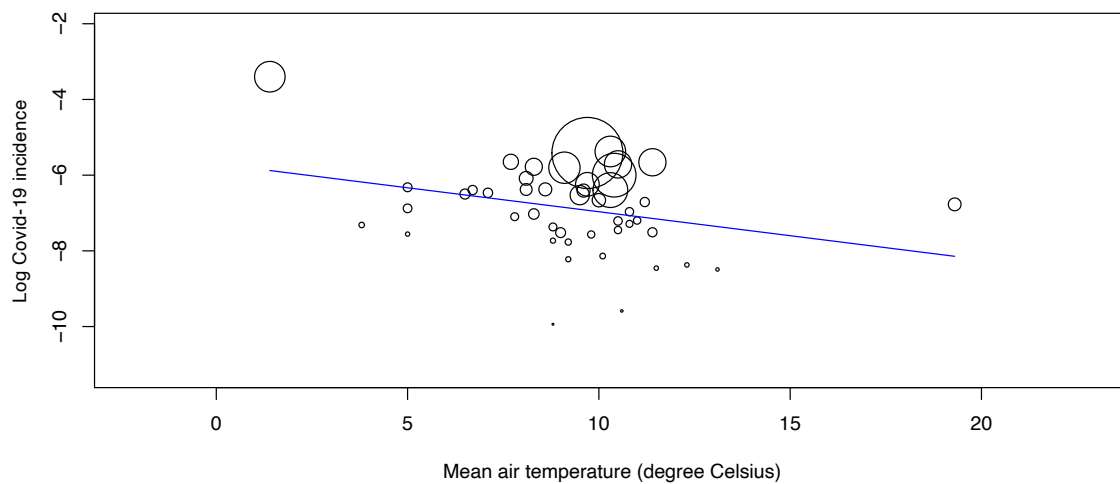
In conclusion, higher air temperature, air pressure, and UV may be associated with less Covid-19 incidence, which should be confirmed by further epidemiological investigations taking other risk and protective factors of Covid-19 into account.

References

1. Ianevski A, Zusinaite E, Shtaida N, et al. Low Temperature and Low UV Indexes Correlated with Peaks of Influenza Virus Activity in Northern Europe during 2010-2018. *Viruses* 2019;11:207.
2. Yao Y, Pan J, Liu Z, et al. No association of COVID-19 transmission with temperature or UV radiation in Chinese cities. *Eur Respir J* 2020;55:2000517.

Figure legends

Figure 1. Meta-Regression Graph Depicting Covid-19 Incidence (Plotted as the Logarithm Transformed Incidence on the Y-Axis) as a Function of a Given Meteorological Factor (Plotted on the X-Axis).



Supplementary Table 1: Extracted data in each Japanese prefecture

Prefecture	Prefectural capital city	Cumulative patients (N)	Population/100-km ² inhabitable area (N)	Incidence (/population/100-km ² inhabitable area)	Mean air temperature (°C)	Mean wind speed (m/s)	Mean sea level air pressure (hPa)	Mean relative humidity (%)	Mean percentage of possible sunshine (%)	Cumulative sunshine duration (h)	Cumulative precipitation (mm)	Mean daily maximum UV index
Tokyo	Tokyo	4331	972400	0.004454	9.7	2.8	1015.4	62.9	52.6	731.2	577.5	2.4
Osaka	Osaka	1641	662270	0.002478	10.4	2.5	1018.1	60.3	48.5	684.2	342.5	2.5
Kanagawa	Yokohama	1042	623900	0.001670	10.3	3.8	1015.3	61.1	54.6	751.3	568.0	2.4
Saitama	Kumagaya	857	283600	0.003022	9.1	2.9	1015.7	60.6	61.4	785.0	362.5	2.4
Chiba	Chiba	816	175980	0.004637	10.3	3.6	1015.5	57.8	51.3	711.1	549.0	2.4
Hokkaido	Sapporo	790	23630	0.033432	1.4	3.3	1014.6	69.0	39.8	554.9	368.5	1.6
Hyogo	Kobe	650	197060	0.003298	10.5	3.8	1018.1	61.8	50.7	709.2	317.0	2.6
Fukuoka	Fukuoka	645	184930	0.003488	11.4	2.9	1019.4	65.0	45.2	638.9	459.0	2.5
Aichi	Nagoya	491	252220	0.001947	9.7	3.3	1017.1	62.5	55.9	786.8	369.5	2.5
Kyoto	Kyoto	323	220730	0.001463	9.5	2.1	1018.0	64.0	42.5	595.6	333.0	2.4
Ishikawa	Kanazawa	254	82120	0.003093	8.3	4.4	1017.8	66.0	35.5	507.6	697.5	2.1
Toyama	Toyama	201	56980	0.003528	7.7	3.1	1017.9	76.3	35.0	495.5	694.0	2.0
Ibaragi	Mito	165	72370	0.002280	8.1	2.5	1015.6	65.8	55.9	771.2	453.0	2.3
Hiroshima	Hiroshima	156	121890	0.001280	10.0	3.4	1018.9	56.8	51.0	716.0	471.0	2.5
Gifu	Gifu	149	90320	0.001650	9.6	2.8	1017.3	58.3	53.2	746.0	439.5	2.4
Gunma	Maebashi	146	85640	0.001705	8.6	2.8	1015.9	58.3	62.6	862.9	291.0	2.7
Okinawa	Naha	142	123860	0.001146	19.3	4.8	1018.9	70.5	36.7	515.1	304.0	4.3
Fukui	Fukui	122	71850	0.001698	8.1	2.8	1018.1	76.0	34.3	490.8	739.0	2.2
Shiga	Hikone	96	108020	0.000889	8.3	3.3	1018.0	73.5	42.0	613.1	474.5	2.4
Miyagi	Sendai	88	58440	0.001506	6.5	3.4	1015.8	66.0	48.0	664.6	345.0	1.9
Nara	Nara	85	156510	0.000543	9.0	2.3	1018.1	68.0	41.5	585.2	383.5	2.5
Niigata	Niigata	77	49520	0.001555	7.1	3.4	1017.1	72.5	32.8	464.1	477.0	1.9
Fukushima	Fukushima	74	44200	0.001674	6.7	2.8	1016.2	66.0	44.7	623.6	326.5	2.1
Kochi	Kochi	74	60710	0.001219	11.2	1.8	1017.8	64.5	58.9	822.8	601.0	2.8
Shizuoka	Shizuoka	73	133080	0.000549	11.4	2.3	1015.0	63.0	59.2	827.7	719.5	2.6
Yamagata	Yamagata	68	37780	0.001800	5.0	1.9	1016.6	73.5	35.2	492.0	347.5	2.0
Nagano	Nagano	66	63960	0.001032	5.0	2.6	1017.2	74.2	46.7	653.2	241.0	2.6
Wakayama	Wakayama	62	83850	0.000739	10.5	4.0	1018.1	63.3	48.2	682.5	329.0	2.6
Oita	Oita	60	63590	0.000944	10.8	2.8	1019.0	66.3	50.2	706.5	300.0	2.7
Tochigi	Utsunomiya	54	65240	0.000828	7.8	3.2	1015.7	65.1	58.6	806.7	366.5	2.4
Yamanashi	Kofu	54	85610	0.000631	8.8	2.4	1015.4	60.6	62.1	860.6	300.0	2.6
Ehime	Matsuyama	47	80800	0.000582	10.5	2.4	1018.8	64.0	49.1	690.4	410.0	2.6
Kumamoto	Kumamoto	47	62830	0.000748	11.0	2.1	1019.3	69.8	46.9	665.4	381.5	2.7
Mie	Tsu	45	86980	0.000517	9.8	3.5	1017.6	56.5	52.7	736.4	390.5	2.5
Saga	Saga	42	61320	0.000685	10.8	3.2	1019.4	68.5	47.4	666.7	488.0	2.6

Yamaguchi	Yamaguchi	34	80260	0.000424	9.2	1.9	1019.2	73.3	44.0	626.4	552.5	2.4
Kagawa	Takamatsu	28	95660	0.000293	10.1	2.7	1018.5	64.8	51.2	715.5	309.5	2.6
Aomori	Aomori	26	39110	0.000665	3.8	4.0	1015.5	73.0	31.0	437.0	335.5	1.6
Shimane	Matsue	23	52350	0.000439	8.8	3.7	1018.6	73.7	37.5	536.7	619.0	2.3
Okayama	Okayama	23	85540	0.000269	9.2	3.2	1018.6	66.5	50.5	707.0	339.0	2.6
Nagasaki	Nagasaki	17	80060	0.000212	11.5	2.4	1019.4	70.8	44.4	626.6	429.0	2.7
Miyazaki	Miyazaki	17	73410	0.000232	12.3	3.3	1018.4	70.5	55.4	775.6	407.5	3.1
Akita	Akita	16	30610	0.000523	5.0	4.6	1016.1	72.2	32.1	451.5	506.5	1.7
Kagoshima	Kagoshima	10	48720	0.000205	13.1	3.3	1018.9	69.5	48.1	681.9	495.5	3.1
Tokushima	Tokushima	5	72850	0.000069	10.6	3.3	1018.2	63.8	53.7	751.4	309.0	2.8
Tottori	Tottori	3	62160	0.000048	8.8	3.4	1018.5	72.2	35.7	510.2	606.0	2.3
Iwate	Morioka	0	33410	0	3.3	3.0	1016.0	73.0	38.8	526.3	306.5	1.8
