

Effects of pre-existing morbidities on occurrence of death among COVID-19 disease patients: A systematic review and meta-analysis

Authors: Md. Mostauf Ali Khan, MSc¹□, Md. Nuruzzaman Khan, MPH^{2,3*}□, Md. Golam Mustagir, MSc¹, Juwel Rana, MPH^{4,5}, Md. Saiful Islam, PhD⁶, and Md Iqbal Kabir, PhD⁶

Affiliations:

¹Department of Population Science and Human Resource Development, University of Rajshahi, Rajshahi-6205, Bangladesh.

²School of Public Health and Medicine, Faculty of Health and Medicine, The University of Newcastle, Australia

³Department of Population Sciences, Jatiya Kabi Kazi Nazrul Islam University, Trishal, Mymensingh-2220, Bangladesh.

⁴Department of Biostatistics and Epidemiology, University of Massachusetts Amherst, Amherst, MA, United States.

⁵Department of Public Health, North South University, Bashundhara, Dhaka-1229, Bangladesh.

⁶Directorate General of Health Services (DGHS), Mohakhali, Dhaka 1212, Bangladesh.

*Corresponding Author:

Md. Nuruzzaman Khan, MSc
PhD Research Fellow
School of Public Health and Medicine,
Faculty of Health and Medicine,
The University of Newcastle, Australia
Phone: +61-470369801
E-mail: sumonrupop@gmail.com

□ Joint 1st author. These authors have contributed equally to this study.

Effects of pre-existing morbidities on occurrence of death among COVID-19 disease patients: A systematic review and meta-analysis

Abstract

Background: Coronavirus disease 2019 (COVID-19), most hectic pandemic of the era, is increasing exponentially and taking thousands of lives, worldwide.

Objective: This study aimed to assess the prevalence of pre-existing morbidities among COVID-19 infected patients and their mortality risks against each type of pre-existing morbidity categories.

Design: Systematic review and meta-analysis

Data sources: Medline, Web of Science, Scopus, and CINAHL databases were searched using the following keywords: (COVID-19 or 2019-nCoV or Coronavirus or SARS-CoV-2) AND (Comorbidity or Morbidity) AND (Mortality or Death or Died) up to May 01, 2020. Further searches were conducted using the reference list of the selected studies, renowned pre-print servers (e.g., medRxiv, bioRxiv, SSRN), and relevant journal websites.

Eligibility criteria: Studies written in the English language included if those were conducted among COVID-19 patients with and without comorbidities and presented survivor vs. non-survivor counts or hazard/odds of deaths or survivors against types of pre-existing morbidities.

Methods: Comorbidities reported in the selected studies were grouped into eight categories. The pooled likelihoods of deaths in each category were estimated using a fixed or random-effect model, based on the heterogeneity assessment. Publication bias was assessed by visual inspection of the funnel plot asymmetry and Egger's regression test. Trim and Fill method was used if there any publication bias was found.

Results: A total of 42 studies included in this study comprised of 39,398 samples. The most common pre-existing morbidities in COVID-19 infected patients were hypertension (36.5%), cardiovascular disease (11.9%), and diabetes (22.0%). The higher likelihood of deaths was found among COVID-19 patients who had pre-existing cardiovascular system diseases (OR: 3.32, 95% CI: 2.79-3.95), immune and metabolic disorders (OR: 2.39, 95% CI: 2.00-2.85), respiratory diseases (OR: 2.02, 95% CI: 1.80-2.26), cerebrovascular system diseases (OR: 4.12, 95% CI: 3.04-5.58), any types of cancers (OR: 2.22, 95% CI: 1.63-3.03), renal (OR: 3.02, 95% CI: 2.60-3.52), and liver system diseases (OR: 1.44, 95% CI: 1.21-1.71).

Conclusions: This study provides evidence of a higher likelihood of deaths among COVID-19 patients against morbidity categories. These findings could potentially help healthcare providers to sort out the most endangered COVID-19 patients by comorbidities, take precautionary measures during hospitalization, assess susceptibility to death, and prioritize their treatment, which could potentially reduce the number of fatalities in COVID-19 disease.

Keywords: Coronavirus; 2019-nCoV; COVID-19; SARS-CoV-2; Comorbidity; Mortality

Introduction

The coronavirus disease 2019 (COVID-19) caused by the SARS-CoV-2, a virus from the large coronavirus family, started in a seafood market in Wuhan, China, and is now a global pandemic. The virus is highly transmissible (reproductive number: 1.6-6.5, doubling time: 6.4 to 7.4 days) [1], which can mainly transmit through respiratory droplets (coughs or sneezes), close contact with the infected person [2, 3], and touching surfaces or objects that are touched by the infected person [2, 3]. As of May 08, 2020, 130 days since the virus was first detected on December 31, 2019, approximately 3.77 million people from 215 countries or territories have been infected with this virus [4]. Around 0.26 million of them have already died [4], and about 2% of currently infected people are now in critical conditions [5]. To date, there is no specific medicine or vaccine for COVID-19 disease; therefore, the majority of the affected countries are taking non-pharmaceutical interventions such as restriction in inhabitants' mobility, quarantine of suspected persons, isolation of infected persons, travel restrictions, and airport screening to reduce further infections [1, 6, 7].

The virus is equally transmissible in all ages; however, people who are now in critical conditions or who died were more likely to be in older age and found they had one or more morbidities [8-11]. Commonly reported morbidities among patients who died from COVID-19 were hypertension, diabetes, cardiovascular disease, and cerebrovascular disease [8, 12-14]. Notably, these comorbidities are independent causes of millions of annual deaths globally; 17.9 million deaths from cardiovascular system diseases, 9 million deaths from cancers, 3.9 million deaths from respiratory diseases, and 1.6 million deaths from diabetes, according to a report by World Health Organization (WHO) in 2018 [15]. People with one or more of these morbidities usually have poor immune systems, which increases their susceptibility to being infected, to reach in critical condition, and even died from a secondary disease like COVID-19 [1, 12, 16-19]. Precautionary measures following COVID-19 disease

among patients with one or more morbidities could be potential ways to combat its adverse outcomes and severities. Thus, we need to identify possible morbidities that are potentially increasing the risks of mortality, which are still lacking. Studies conducted among COVID-19 patients are highly varied with reported morbidities and the likelihood of mortality [8, 10, 20, 21]. To address these gaps, this study was conducted with two primary aims: (i) to summarize pre-existing morbidities in patients with a secondary disease, COVID-19 and (ii) to estimate the likelihood of mortality from COVID-19 against each category of pre-existing morbidities. The study findings could help healthcare providers to take appropriate measures to control fatalities from this pandemic.

Methods

This systematic review and meta-analysis was conducted by following the Preferred Reporting for Systematic Review and Meta-Analysis (PRISMA) consensus statement [22]. Studies relevant to the COVID-19 disease among people with pre-existing one or more morbidities were included.

Search strategy

Four databases: Medline, Web of Science, Scopus, and CINAHL were searched, concluded on May 01, 2020, using pre-specified search strategies for each database. The search strategy consists of keywords on COVID-19 disease (COVID-19, 2019-nCoV, Coronavirus, SARS-CoV-2), pre-existing morbidity (comorbidity, morbidity), and patients' survival status (mortality, death, died) combined using the Boolean operators (AND, OR). Details of the search strategies are presented in the supplementary tables (Table 1- 4). Additional searches were conducted using the reference list of the selected studies, relevant journal websites, and renowned pre-print servers (medRxiv, bioRxiv).

Study selection criteria

All peer-reviewed and pre-print (not-peer-reviewed) studies met the pre-specified inclusion, and exclusion criteria were included in this study.

Inclusion criteria

Studies met the following inclusion criteria were included if: (i) conducted for the patients infected with COVID-19 with or without pre-existing morbidities, (ii) presented survivor and non-survivor counts following COVID-19 disease among patients with or without preexisting morbidity or presented hazard/risk/odds ratio of deaths or survival following COVID-19 against the types of morbidities, and (iii) published in the English language. Studies without complete information but met our inclusion criteria were included in the narrative review.

Exclusion criteria

Studies excluded if COVID-19 was reported among pregnant women or children (aged <18 years) and written in languages other than English. We also excluded review papers, correspondence, viewpoints, editorials, commentaries, and studies where no information related to the previous morbidity was reported.

Data extraction and quality assessment

A data extraction form was designed, trialed, and modified to extract information from the selected studies. Two authors (MMAK and MGM) used the pre-designed form to extract information independently. The following information was extracted: study location, design, sample size, study population characteristics (e.g., age, gender), and survivor vs. non-survivor counts among COVID-19 patients with or without specific morbidity. If available, the odds/risk/hazard ratio of deaths among COVID-19 patients with comorbidities were extracted

against the types of morbidity. Disagreements reported in data extraction were reviewed and solved by the corresponding and senior authors (MNK and MIK). The modified Newcastle-Ottawa scale, as part of the data extraction strategy, was used to assess the quality of selected studies.

Statistical analysis

Pre-existing one or more morbidities among COVID-19 disease patients reported in the selected studies were grouped into eight broad categories based on the type of morbidities. These were cardiovascular system diseases (hypertension, cardiovascular disease, arrhythmia, heart failure), immune and metabolic disorders (diabetes, immunosuppression, autoimmune disease, immunodeficiency, metabolic disorder), respiratory system diseases (chronic lung diseases, Chronic Obstructive Pulmonary Disease (COPD), acute respiratory distress syndrome, tuberculosis, etc.), cancer (malignancy, cancer, and tumor), cerebrovascular diseases (cerebrovascular disease, peripheral vascular disease), renal system diseases (chronic kidney disease, urinary disease), liver system diseases (chronic liver disease, cirrhosis, hyperlipidemia, Hepatitis B, etc.), and gastrointestinal system diseases (chronic digestive disorder, gastrointestinal disease). The odds ratios (ORs) of deaths with 95% confidence interval (95% CI) for the people exposed to a particular category of morbidity as compared to people unexposed to any specific morbidity was estimated from the extracted raw data or reported ORs. We first used the Haldane correction (add constant 0.5 to each cell) for the studies in which the sample included in the exposed or unexposed group was zero (such as all exposed patients died or vice versa) [23-25]. We then used either a fixed effect or random effect model to estimate ORs, selected based on heterogeneity assessment. When the test of heterogeneity (I^2 statistics) was moderate (50-74%) or high ($\geq 75\%$), the pooled estimates of ORs were computed using the random-effects model [26]. Subgroup and meta-regression analyses were conducted for the groups where moderate or higher heterogeneity was

reported. For this, pre-specified subgroups (types of morbidities, study country, study design, mean age of the total sample, mean age of death sample) were used. Publication bias was assessed by visual inspection of the funnel plot asymmetry and Egger's regression test [27]. When evidence of publication bias was found, the Trim and Fill method was used to estimate and adjust potentially missing studies, and the effect size was recalculated accordingly [28]. Stata software version 15.1 (StataCorp. LP, College Station, TX, USA) was used for all analyses.

Results

A total of 247 articles were identified from the databases searched, and the additional 15 articles were identified by checking the reference list of the selected articles and the selected journal's websites (Figure 1). Around 1273 articles were also initially identified from the aforementioned pre-prints servers. Of the selected articles, 1341 articles were excluded after screening titles and abstracts, leaving 114 articles for full-text review for possible inclusion in this study. Of these, 55 articles were excluded based on the inclusion and exclusion criteria for the study sample (e.g., excluded pregnant or children), and 11 articles were excluded for study types (e.g review papers, correspondence, viewpoints, editorials, commentaries), and six articles were excluded for fully incomplete data. A total of 42 articles were finally selected for this study; 36 articles were included in the meta-analysis, and the remaining six articles were synthesized narratively.

Study characteristics

A summary of the 42 selected articles is represented in Table 1. A total of 23 of the selected 42 articles were published in peer-reviewed journals, and 18 articles were published in pre-print servers. One of the selected studies was a national report for Australia. The majority of these studies were retrospective in nature (26) along with 7 prospective studies. The selected

studies comprised 36,398 COVID-19 patients, 7,558 (42.5%) of them had preexisting one or more morbidities, 38.4% of patients had undergone critical care, and 5,310 (14.6%) of them died. Their average age was 60.5 ± 8.0 years, and 60.1% of them were male. The mean age at death was 69.9 ± 5.6 for the patients who died in COVID-19 disease. Total 36 of the selected studies presented death counts following COVID-19 disease among patients with or without specific one or more morbidities. Four included studies (Du et al. [29], Zhang et al. [30], Kim et al. [31] and Yao et al. [32]) were conducted only for dead COVID-19 patients and reported the status of pre-existing morbidities before their deaths. All studies were of moderate to high quality (Supplementary Table 6-7).

Prevalence of preexisting morbidity among COVID-19 patients

Distribution of the type of morbidity presented in Table 2. Approximately 36.5% of the total COVID-19 disease patients reported that they had hypertension, 22.0% had diabetes, 11.9% had cardiovascular disease, 4.1% had chronic lung disease, 2.3% had COPD, 11.0% had hyperlipidemia, and 3.0% had chronic kidney disease.

Effects of preexisting morbidity on deaths in COVID-19 disease patients

The pooled ORs of deaths for each category of preexisting morbidities among COVID-19 disease patients, publication bias, and Trim and Fill estimates are presented in Table 3. COVID-19 disease patients with preexisting cardiovascular system disease were 3.32 times more likely to die (OR: 3.32, 95% CI: 2.79-3.95; $I^2 = 83.8\%$) than the patients who had no cardiovascular system diseases. The odds of death among COVID-19 disease patients with immune and metabolic disorders were also found to be 239% higher (OR: 2.39, 95% CI: 2.00-2.85; $I^2 = 64.5\%$) than among COVID-19 patients without such disorders. The incidence of COVID-19 disease among people with respiratory system disease increases mortality risk around two times (OR: 2.02, 95% CI: 1.80-2.26; $I^2 = 71.2\%$) than COVID-19 disease patients

without respiratory system diseases. Similarly, we found higher mortality risk among COVID-19 disease patients who had pre-existing any types of cancers (OR: 2.22, 95% CI: 1.63-3.03, $I^2= 67.7\%$) and cerebrovascular system diseases (OR: 4.12, 95% CI: 3.04-5.58) than their counterparts. Moreover, the incidence of COVID-19 disease among patients with preexisting renal system disease and chronic liver disease increased mortality risk by about three times (OR: 3.02, 95% CI: 2.60-3.51) and one and half times (OR: 1.44, 95% CI: 1.21-1.71), respectively compared to the COVID-19 disease patients who did not mention such comorbidities.

We found evidence of publication bias for the three categories of preexisting morbidities: any type of cancer, cerebrovascular diseases, and liver system diseases (Figure 1a to 8a). We then used Trim and Fill methods to impute the number of missing studies, which hypothetically imputed two studies for cardiovascular system diseases, three studies for renal system diseases, and three studies for liver system diseases. The pooled analysis, including these missing studies, showed almost similar results to the summary estimates presented earlier without these missing studies.

Evidence of higher deaths among COVID-19 disease patients with preexisting one or more morbidities were also demonstrated in the narrative review (Supplementary Table 5). In two of the three articles reviewed in this study, researchers reported that each of the patients who died following COVID-19 disease had preexisting morbidities, mostly had any types of cardiovascular system diseases and immune and metabolic disorders [29, 30]. Researchers in one study found around 38% of the COVID-19 disease patients with hypertension died [33] and one study reported higher odds for deaths in kidney injury [34].

Stratified analysis

We found evidence of high heterogeneity ($I^2 > 75\%$) for cardiovascular system diseases (83.8%). To examine the sources of heterogeneity, we conducted stratified analysis across types of comorbidities, study design (cross-sectional vs. retrospective cohort vs. prospective cohort), sample size (divided based on mean sample size of the included studies and classified as ≤ 1134 , > 1134), age of the total sample (divided based on mean age and classified as ≤ 60 years and > 60 years), and age at death (divided based on mean age and classified as ≤ 69 vs. > 69) (Table 4). We found odds of death varied across specific types of preexisting morbidities included to generate cardiovascular system diseases category. For instance, in the cardiovascular system diseases category, the odds of mortality were found higher for COVID-19 disease patients with preexisting heart failure (OR: 3.98, 95% CI: 2.96-5.35), cardiovascular disease (OR: 3.35, 95% CI: 2.53-4.42), hypertension (OR: 3.28, 95% CI: 2.53-4.24), than for COVID-19 disease patients with pre-existing arrhythmia (OR: 3.00, 95% CI: 1.96-4.57).

Discussion

This study aimed to summarize preexisting morbidities among COVID-19 disease patients, which increases their incidence of deaths and their corresponding likelihoods. A total of 42 studies were included that comprised 36,398 samples, and 7,558 (42.5%) of them had preexisting morbidities. The most frequently reported morbidities were hypertension (36.5%), diabetes (22.0%), and cardiovascular disease (11.9%). The likelihood of death was higher among COVID-19 patients who had comorbidities like cardiovascular and cerebrovascular diseases, respiratory diseases, renal diseases, immune and metabolic disorders, hepatic diseases, and cancer. This evidence will guide physicians to take precautionary measures, which could reduce the number of fatalities following secondary infection with COVID-19.

Among the total positive COVID-19 disease cases included in this systematic review study, around 43% had preexisting one or more morbidities, mostly cardiovascular system diseases and immune and metabolic disorders. Importantly, patients with these diseases are more likely to have a higher neutrophil-lymphocyte ratio [35, 36], higher D-dimer level [37], and higher C-reactive protein [38]. These increased parameters lead to multiple organ failure [39, 40], severe pneumonia, hypoxia, respiratory failure, myocardial damage, and circulatory failure [18]. These non-communicable diseases independently elevate the risk of death and increase further if patients are infected with COVID-19 disease [21, 40-42]. COVID-19 disease also damages patients' myocardial cells by destabilizing coronary plaque in pre-existing cardiovascular conditions and previous history of myocardial infarct [43, 44]. Similar higher risks of mortality were reported among SARS-CoV and MERS-CoV patients with cardiovascular diseases [41, 43, 45, 46]. These two diseases are considered as ancestors of current COVID-19 disease, which were reported in 2003 and 2012, respectively [41, 43, 45, 46]. Evidence also validates that the occurrence of influenza, along with cardiovascular diseases and diabetes, could increase the risk of death [47, 48].

Pooled likelihoods in this study provide evidence of higher deaths among COVID-19 disease patients who had preexisting chronic respiratory diseases or any type of cancers. Chronic respiratory diseases like COPD and asthma are well-established risk factors for pneumonia [49], which also increase the susceptibility to COVID-19 disease infection [50]. Once patients are infected with COVID-19 disease, these further affect the patient's respiratory system and progress to severe hypoxemia [51]; therefore, the cumulative effects lead to events of death [18, 50]. Cancer patients are more likely to report a systemic immunosuppressive state and progress to severe clinical events, such as require intensive care (ICU) or death [52, 53]. Secondary infection with COVID-19 disease, which has its own

adverse consequences on the human body, could, therefore, boost serve clinical events as well as deaths among patients with these pre-existing morbidities.

This study also suggests that patients with cerebrovascular, liver and renal diseases are more vulnerable to mortality following the second incidence of COVID-19 disease than the patient does not have such diseases. The results are comparable to deaths among previously reported SARS patients [54]. Comorbidities such as, cardio-cerebrovascular diseases, liver damage, or renal diseases accelerate an abrupt loss of kidney function [55, 56], tissue damage that causes hypoxia, shock, and rhabdomyolysis [34, 57], and increased occurrence of thrombocytopenia (reduced platelet counts) [21, 58]. These could independently elevate the risk of death and add to the adverse effects on the human body being infected with COVID-19 disease. Together, these increase occurrences of deaths. Moreover, elevated alanine aminotransferase (ALT) levels and reduced albumin levels are found to be associated with higher mortality in COVID-19 disease [21, 58], which can be caused by chronic liver and kidney diseases [58-62]. Thus, it indicates an urgency of early precautions to prevent deaths among COVID-19 disease patients with pre-existing morbidities.

Strengths and limitations

This study has several strengths and limitations that should be reported. To our knowledge, this is the first of its kind that summarizes all morbidities among COVID-19 disease patients that lead to death. Moreover, morbidities reported among COVID-19 disease patients were classified into board groups based on their characteristics, and the likelihood of death was estimated separately for each group. This evidence informs healthcare providers about the risk of death among COVID-19 disease patients with different groups of pre-existing morbidities. Thus, they will be able to take precautionary measures early targeting to prevent deaths. However, this study reported the odds of death for COVID-19 disease patients with

one preexisting morbidity only. Many COVID-19 disease patients may have multi-morbidities (COVID-19 disease with pre-existing two or more morbidities) and a higher risk of death. However, the studies included in this review considered each morbidity separately; for instance, if COVID-19 patients had both hypertension and diabetes, they were included in both groups. None of the included studies considered COVID-19 disease with two or more morbidities together; therefore, we failed to provide the likelihood of deaths for COVID-19 disease patients with two or more preexisting morbidities. Moreover, the likelihoods presented in this study were mostly unadjusted (31 of the 36 articles included) calculated from the extracted raw data. This may overestimate or underestimate the actual likelihood of deaths in COVID-19 disease patients because age and other socio-demographic characteristics are potential confounders of their deaths, which should be adjusted for getting unbiased estimates. Despite these limitations, this study is unique and beneficial for healthcare providers to handle COVID-19 disease patients with preexisting morbidities.

Conclusion

About 46% of the sample included in this systematic review had one or more preexisting morbidities and get COVID-19 as a secondary infection. The most common preexisting morbidities were hypertension, diabetes, and cardiovascular disease. The likelihood of death was higher among COVID-19 disease patients who had pre-existing cardiovascular and cerebrovascular system diseases, respiratory system diseases, renal diseases, immune and metabolic disorders, liver diseases, and any types of cancer. These findings will help healthcare providers to sort COVID-19 patients by comorbidities, take precautionary measures during hospital admission, assess susceptibility to death, and prioritize their treatment. These could potentially reduce the number of fatalities from secondary infection with COVID-19 disease.

Acknowledgements

The authors are grateful to the authors of the paper included in this review.

Authors Contribution

Conceptualization: MMAK, NMK, MIK

Research design: MMAK and MNK

Data curation: MMAK and MGM

Analysis: MNK and MMAK

Draft preparation: MMAK, MNK, and MGM

Supervision: MNK

Critical review: JR, MIK and MSI,

Conflicts of interest

The authors have no competing interests to declare.

Funding

The authors have received no specific funds for this study.

Availability of data and materials

Data related to this study are available upon request to the corresponding author.

References

1. Park, M., et al., *A Systematic Review of COVID-19 Epidemiology Based on Current Evidence*. J Clin Med, 2020. **9**(4).
2. CDC. *Coronavirus Disease 2019 (COVID-19)*. 2020 [cited 2020 20.03.2020]; Available from: <https://www.cdc.gov/coronavirus/2019-ncov/prepare/transmission.html>.
3. Chan, J.F., et al., *A familial cluster of pneumonia associated with the 2019 novel coronavirus indicating person-to-person transmission: a study of a family cluster*. Lancet, 2020. **395**(10223): p. 514-523.
4. WHO. *Novel Coronavirus (COVID-19) Situation*. 2020 08.05.2020; Available from: <https://experience.arcgis.com/experience/685d0ace521648f8a5beeeee1b9125cd>.
5. Worldmeter. *COVID-19 Coronavirus Pandemic (Real time database)*. 2020 08.05.2020; Available from: <https://www.worldometers.info/coronavirus/>.
6. Organization, W.H., *Non-pharmaceutical public health measures for mitigating the risk and impact of epidemic and pandemic influenza: annex: report of systematic literature reviews*. 2019, World Health Organization.
7. Cowling, B.J., et al., *Impact assessment of non-pharmaceutical interventions against coronavirus disease 2019 and influenza in Hong Kong: an observational study*. Lancet Public Health, 2020.
8. Guan, W.J., et al., *Comorbidity and its impact on 1590 patients with Covid-19 in China: A Nationwide Analysis*. European Respiratory Journal, 2020. **26**: p. 26.
9. Mehra, M.R., et al., *Cardiovascular Disease, Drug Therapy, and Mortality in Covid-19*. New England Journal of Medicine, 2020.
10. Yang, X., et al., *Clinical course and outcomes of critically ill patients with SARS-CoV-2 pneumonia in Wuhan, China: a single-centered, retrospective, observational study*. The Lancet Respiratory Medicine, 2020. **24**: p. 24.
11. Zhang, J., et al., *Risk factors for disease severity, unimprovement, and mortality in COVID-19 patients in Wuhan, China*. Clinical Microbiology and Infection, 2020.
12. Siordia, J.A., *Epidemiology and clinical features of COVID-19: A review of current literature*. Journal of Clinical Virology, 2020. **127**: p. 104357.
13. Huang, C., et al., *Clinical features of patients infected with 2019 novel coronavirus in Wuhan, China*. The Lancet, 2020. **395**(10223): p. 497-506.

14. Yang, J., et al., *Prevalence of comorbidities in the novel Wuhan coronavirus (COVID-19) infection: a systematic review and meta-analysis*. International Journal of Infectious Diseases, 2020.
15. WHO, *Noncommunicable diseases*. 2018, World Health Organization, Geneva, Switzerland: World Health Organization, Geneva, Switzerland.
16. Madjid, M., et al., *Potential Effects of Coronaviruses on the Cardiovascular System: A Review*. JAMA Cardiology, 2020.
17. Henry, B. and G. Lippi, *Chronic kidney disease is associated with severe coronavirus disease 2019 (COVID-19) infection*. International Urology and Nephrology, 2020.
18. Ruan, Q., et al., *Clinical predictors of mortality due to COVID-19 based on an analysis of data of 150 patients from Wuhan, China*. Intensive Care Medicine, 2020.
19. Yang, J., et al., *Prevalence of comorbidities in the novel Wuhan coronavirus (COVID-19) infection: a systematic review and meta-analysis*. International Journal of Infectious Diseases.
20. Chen, T., et al., *Clinical characteristics and outcomes of older patients with coronavirus disease 2019 (COVID-19) in Wuhan, China (2019): a single-centered, retrospective study*. Journals of Gerontology Series A Biological Sciences & Medical Sciences, 2020. **11**: p. 11.
21. Zhou, F., et al., *Clinical course and risk factors for mortality of adult inpatients with COVID-19 in Wuhan, China: a retrospective cohort study*. Lancet, 2020. **395**(10229): p. 1054-1062.
22. Moher, D., et al., *Preferred reporting items for systematic reviews and meta-analyses: the PRISMA statement*. PLoS Med, 2009. **6**(7): p. e1000097.
23. Valenzuela, C., *2 solutions for estimating odds ratios with zeros*. Revista medica de Chile, 1993. **121**(12): p. 1441-1444.
24. Liu, D., R.Y. Liu, and M. Xie, *Exact meta-analysis approach for discrete data and its application to 2×2 tables with rare events*. Journal of the American Statistical Association, 2014. **109**(508): p. 1450-1465.
25. Papastergiou, P., et al., *Elevated bathing-associated disease risks despite certified water quality: a cohort study*. International journal of environmental research and public health, 2012. **9**(5): p. 1548-1565.
26. Higgins, J.P.T., et al., *Measuring inconsistency in meta-analyses*. BMJ, 2003. **327**(7414): p. 557.

27. Egger, M., et al., *Bias in meta-analysis detected by a simple, graphical test*. *Bmj*, 1997. **315**(7109): p. 629-634.
28. Duval, S. and R. Tweedie, *Trim and fill: a simple funnel plot-based method of testing and adjusting for publication bias in meta-analysis*. *Biometrics*, 2000. **56**(2): p. 455-463.
29. Du, R.H., et al., *Hospitalization and Critical Care of 109 Decedents with COVID-19 Pneumonia in Wuhan, China*. *Annals of the American Thoracic Society*, 2020. **07**: p. 07.
30. Zhang, B., et al., *Clinical characteristics of 82 death cases with COVID-19*. *medRxiv*, 2020: p. 2020.02.26.20028191.
31. Kim, T., et al., *Epidemiological and Clinical Characteristics of Early 101 Deceased Patients in the Coronavirus Disease-19 (COVID-19) Outbreak in Republic of Korea*. SSRN, 2020.
32. Yao, T., et al., *Clinical Characteristics of 55 Cases of Deaths with COVID-19 Pneumonia in Wuhan, China: Retrospective Case Series*. SSRN, 2020.
33. Grasselli, G., et al., *Baseline Characteristics and Outcomes of 1591 Patients Infected With SARS-CoV-2 Admitted to ICUs of the Lombardy Region, Italy*. *Jama*, 2020. **06**: p. 06.
34. Cheng, Y., et al., *Kidney disease is associated with in-hospital death of patients with COVID-19*. *Kidney International*, 2020. **20**: p. 20.
35. Angkananard, T., et al., *Neutrophil Lymphocyte Ratio and Cardiovascular Disease Risk: A Systematic Review and Meta-Analysis*. *BioMed research international*, 2018. **2018**: p. 2703518-2703518.
36. Mertoglu, C. and M. Gunay, *Neutrophil-Lymphocyte ratio and Platelet-Lymphocyte ratio as useful predictive markers of prediabetes and diabetes mellitus*. *Diabetes & Metabolic Syndrome: Clinical Research & Reviews*, 2017. **11**: p. S127-S131.
37. Nwose, E.U., et al., *D-dimer identifies stages in the progression of diabetes mellitus from family history of diabetes to cardiovascular complications*. *Pathology*, 2007. **39**(2): p. 252-7.
38. Bisoendial, R.J., et al., *C-reactive protein is a mediator of cardiovascular disease*. *European Heart Journal*, 2010. **31**(17): p. 2087-2091.
39. Wang, D., et al., *Clinical characteristics of 138 hospitalized patients with 2019 novel coronavirus-infected pneumonia in Wuhan, China*. *JAMA*, 2020. **323**(11): p. 1061-1069.

40. Chen, N., et al., *Epidemiological and clinical characteristics of 99 cases of 2019 novel coronavirus pneumonia in Wuhan, China: a descriptive study*. The Lancet, 2020. **395**(10223): p. 507-513.
41. Shi, S., et al., *Association of Cardiac Injury With Mortality in Hospitalized Patients With COVID-19 in Wuhan, China*. JAMA Cardiology, 2020.
42. Liu, Y., et al., *Neutrophil-to-lymphocyte ratio as an independent risk factor for mortality in hospitalized patients with COVID-19*. Journal of Infection.
43. Guo, T., et al., *Cardiovascular Implications of Fatal Outcomes of Patients With Coronavirus Disease 2019 (COVID-19)*. JAMA Cardiology, 2020.
44. Clerkin Kevin, J., et al., *Coronavirus Disease 2019 (COVID-19) and Cardiovascular Disease*. Circulation, 2020. **0**(0).
45. Alhogbani, T., *Acute myocarditis associated with novel Middle east respiratory syndrome coronavirus*. Ann Saudi Med, 2016. **36**(1): p. 78-80.
46. Oudit, G.Y., et al., *SARS-coronavirus modulation of myocardial ACE2 expression and inflammation in patients with SARS*. 2009. **39**(7): p. 618-625.
47. Kenny Helena, C. and E.D. Abel, *Heart Failure in Type 2 Diabetes Mellitus*. Circulation Research, 2019. **124**(1): p. 121-141.
48. Dei Cas, A., et al., *Impact of diabetes on epidemiology, treatment, and outcomes of patients with heart failure*. 2015. **3**(2): p. 136-145.
49. Restrepo, M.I., et al., *COPD is associated with increased mortality in patients with community-acquired pneumonia*. 2006. **28**(2): p. 346-351.
50. Halpin, D.M.G., et al., *Do chronic respiratory diseases or their treatment affect the risk of SARS-CoV-2 infection?* The Lancet Respiratory Medicine, 2020.
51. Lippi, G. and B.M. Henry, *Chronic obstructive pulmonary disease is associated with severe coronavirus disease 2019 (COVID-19)*. Respiratory Medicine, 2020.
52. Liang, W., et al., *Cancer patients in SARS-CoV-2 infection: a nationwide analysis in China*. The Lancet Oncology, 2020. **21**(3): p. 335-337.
53. Hanna, T.P., G.A. Evans, and C.M. Booth, *Cancer, COVID-19 and the precautionary principle: prioritizing treatment during a global pandemic*. Nature Reviews Clinical Oncology, 2020. **17**(5): p. 268-270.
54. Tsang, K.W., et al., *A cluster of cases of severe acute respiratory syndrome in Hong Kong*. 2003. **348**(20): p. 1977-1985.
55. Vanmassenhove, J., et al., *Management of patients at risk of acute kidney injury*. 2017. **389**(10084): p. 2139-2151.

56. Lau, W.L., B.N. Huisa, and M. Fisher, *The Cerebrovascular-Chronic Kidney Disease Connection: Perspectives and Mechanisms*. Translational stroke research, 2017. **8**(1): p. 67-76.
57. Tisoncik, J.R., et al., *Into the eye of the cytokine storm*. Microbiology and molecular biology reviews : MMBR, 2012. **76**(1): p. 16-32.
58. Boettler, T., et al., *Care of patients with liver disease during the COVID-19 pandemic: EASL-ESCMID position paper*. JHEP Reports, 2020. **2**(3): p. 100113.
59. Afdhal, N., et al., *Thrombocytopenia associated with chronic liver disease*. J Hepatol, 2008. **48**(6): p. 1000-7.
60. Dorgalaleh, A., et al., *Anemia and thrombocytopenia in acute and chronic renal failure*. International journal of hematology-oncology and stem cell research, 2013. **7**(4): p. 34-39.
61. Lang, J., et al., *Association of serum albumin levels with kidney function decline and incident chronic kidney disease in elders*. Nephrology Dialysis Transplantation, 2017. **33**(6): p. 986-992.
62. Oh, R.C., et al., *Mildly Elevated Liver Transaminase Levels: Causes and Evaluation*. Am Fam Physician, 2017. **96**(11): p. 709-715.
63. Cao, J., et al., *Clinical Features and Short-term Outcomes of 102 Patients with Corona Virus Disease 2019 in Wuhan, China*. Clinical Infectious Diseases, 2020. **02**: p. 02.
64. Chen, T., et al., *Clinical characteristics of 113 deceased patients with coronavirus disease 2019: retrospective study*. BMJ, 2020. **368**: p. m1091.
65. Deng, Y., et al., *Clinical characteristics of fatal and recovered cases of coronavirus disease 2019 (COVID-19) in Wuhan, China: a retrospective study*. Chinese Medical Journal, 2020. **20**: p. 20.
66. Wu, C., et al., *Risk Factors Associated With Acute Respiratory Distress Syndrome and Death in Patients With Coronavirus Disease 2019 Pneumonia in Wuhan, China*. JAMA Internal Medicine, 2020. **13**: p. 13.
67. Yuan, M., et al., *Association of radiologic findings with mortality of patients infected with 2019 novel coronavirus in Wuhan, China*. PLoS ONE [Electronic Resource], 2020. **15**(3): p. e0230548.
68. Chen, X., et al., *Clinical Characteristics of Hospitalized Patients with SARS-CoV-2 and Hepatitis B virus Co-infection*. medRxiv, 2020: p. 2020.03.23.20040733.

69. Caramelo, F., N. Ferreira, and B. Oliveiros, *Estimation of risk factors for COVID-19 mortality - preliminary results*. medRxiv, 2020: p. 2020.02.24.20027268.
70. Ren, L.L., et al., *Identification of a novel coronavirus causing severe pneumonia in human: a descriptive study*. Chin Med J (Engl), 2020.
71. Govt., A., *COVID-19, Australia: Epidemiology Report 12: Reporting week in Communicable diseases intelligence*. 2020, Department of Health, Australian Government: Department of Health, Australian Government.
72. Du, R.-H., et al., *Predictors of Mortality for Patients with COVID-19 Pneumonia Caused by SARS-CoV-2: A Prospective Cohort Study*. European Respiratory Journal, 2020: p. 2000524.
73. Wang, L., et al., *Coronavirus disease 2019 in elderly patients: Characteristics and prognostic factors based on 4-week follow-up*. Journal of Infection, 2020.
74. Fu, L., et al., *Influence factors of death risk among COVID-19 patients in Wuhan, China: a hospital-based case-cohort study*. medRxiv, 2020: p. 2020.03.13.20035329.
75. Paranjpe, I., et al., *Clinical Characteristics of Hospitalized Covid-19 Patients in New York City*. medRxiv, 2020: p. 2020.04.19.20062117.
76. Cummings, M.J., et al., *Epidemiology, clinical course, and outcomes of critically ill adults with COVID-19 in New York City: a prospective cohort study*. medRxiv, 2020.
77. Guo, T.-M., et al., *Clinical Features Predicting Mortality Risk in Older Patients with COVID-19*. SSRN, 2020.
78. Zhu, Q., et al., *Dose-Response Association between Risk Factors and Incidence of COVID-19 in 325 Hospitalized Patients: A Multicenter Retrospective Cohort Study*. SSRN, 2020.
79. Yin, Y., et al., *Critically Ill Patients with COVID-19 in China: A Multicenter Retrospective Observational Study*. SSRN, 2020.
80. Sun, X., et al., *Characteristics of Patients with COVID-19 Pneumonia Admitted to the Intensive Care Unit and Predictors of Mortality in Wuhan, China: A Single-Centered Retrospective Cohort Study*. SSRN, 2020.
81. Luo, X.M., et al., *Characteristics of SARS-CoV-2 Infected Patients with Clinical Outcome During Epidemic Ongoing Outbreak in Wuhan, China*. SSRN, 2020.
82. Zhang, S., et al., *Short Term Outcomes and Risk Factors for Mortality in Patients with COVID-19 in Wuhan, China: A Retrospective Study*. SSRN, 2020.
83. Solís, P. and H. Carreño, *COVID-19 Fatality and Comorbidity Risk Factors among Confirmed Patients in Mexico*. medRxiv, 2020: p. 2020.04.21.20074591.

84. Yao, Q., et al., *Retrospective study of risk factors for severe SARS-Cov-2 infections in hospitalized adult patients*. Pol Arch Intern Med, 2020.
85. Zangrillo, A., et al., *Characteristics, treatment, outcomes and cause of death of invasively ventilated patients with COVID-19 ARDS in Milan, Italy*. Crit Care Resusc, 2020.
86. Yan, Y., et al., *Clinical characteristics and outcomes of patients with severe covid-19 with diabetes*. BMJ Open Diabetes Research & Care, 2020. **8**(1): p. e001343.
87. Tedeschi, S., et al., *Clinical impact of renin-angiotensin system inhibitors on in-hospital mortality of patients with hypertension hospitalized for COVID-19*. Clinical Infectious Diseases, 2020.
88. Nikpouraghdam, M., et al., *Epidemiological characteristics of coronavirus disease 2019 (COVID-19) patients in IRAN: A single center study*. Journal of Clinical Virology, 2020. **127**: p. 104378.
89. Benelli, G., et al., *SARS-COV-2 comorbidity network and outcome in hospitalized patients in Crema, Italy*. medRxiv, 2020: p. 2020.04.14.20053090.
90. Levy, T.J., et al., *Estimating Survival of Hospitalized COVID-19 Patients from Admission Information*. medRxiv, 2020: p. 2020.04.22.20075416.
91. Sneep, R., et al., *Early Epidemiological and Clinical Analysis of the First 200 Patients with COVID-19 Admitted via the Emergency Department in Kings College Hospital, London: A Retrospective Cohort Study*. SSRN, 2020.

Table 1. Background characteristics of the selected studies and hospitalized sample (n = 36,398).

SI	Authors	Article type	Study country	Publication date	Study type	Total Sample (n)	Total death Sample, n (%)	Mean age (\pm SD, or confidence interval)	Mean age at death (\pm SD, or confidence interval)	Male sample (%)	Female sample (%)	Prevalence of any forms of pre-existing morbidities among COVID-19 disease patients ^a , n (%)	ICU admission following COVID-19 disease ^b (%)
<i>Studies included in the meta-analysis</i>													
1.	Guan et al. [8]	Peer reviewed	China	26 Mar 2020	Retrospective	1590	50 (3.1)	48.9 \pm 16.3	-	57.3	42.7	399 (25.1)	6.2
2.	Cao et al. [63]	Peer reviewed	China	2 Apr 2020	Prospective	102	17 (16.7)	54 (37-67)	72 (63-81)	52.0	48.0	47 (46.1)	17.6
3.	Chen et al. [64]	Peer reviewed	China	31 Mar 2020	Retrospective	274	113 (41.2)	62 (44-70)	68 (62-77)	62.0	38.0	133 (48.5)	-
4.	Deng et al. [65]	Peer reviewed	China	20 Mar 2020	Retrospective	225	109 (48.4)	54	69 (62-74)	55.1	44.9	127 (56.4)	-
5.	Yang et al. [10]	Peer reviewed	China	24 Feb 2020	Retrospective	52	32 (61.5)	59.7 \pm 13.3	64.6 \pm 11.2	67.0	33.0	21 (40.4)	38.5
6.	Wu et al. [66]	Peer reviewed	China	13 Mar 2020	Retrospective	201	44 (21.9)	51 (43-60)	-	63.7	36.3	-	26.4
7.	Chen et al. ^c [20]	Peer reviewed	China	11 Apr 2020	Retrospective	55	19 (34.5)	74	77	61.8	38.2	37 (67.3)	-
8.	Zhou et al. [21]	Peer reviewed	China	9 Mar 2020	Retrospective	191	54 (28.3)	56 (46-67)	69 (63-76)	62.0	38.0	91 (47.6)	26.0
9.	Yuan et al. [67]	Peer reviewed	China	19 Mar 2020	Retrospective	27	10 (37.0)	60 (47-69)	68 (63-73)	45	55	13 (48.1)	-
10.	Chen et al. [68]	Preprint	China	30 Mar 2020	Retrospective	123	5 (4.1)	51 (35-66)	-	40.7	59.3	15 (12.2)	-
11.	Caramelo et al. ^d [69]	Preprint	China	25 Feb 2020	Retrospective	-	-	-	-	51.4	48.6	-	-
12.	Ren et al. ^e [70]	Peer reviewed	China	11 Feb 2020	Retrospective	5	1 (20.0)	53.6	61	60.0	40.0	2 (40.0)	100
13.	Australian Govt. ^f [71]	Report	Australia	5 Apr 2020	Retrospective	817	69 (5.3)	59.5	79 (74-84)	-	-	-	13
14.	Shi et al. [41]	Peer reviewed	China	25 Mar 2020	Retrospective	416	57 (13.7)	64 (21-95)	-	49.3	50.7	-	-
15.	Zhang et al. [11]	Peer reviewed	China	15 Apr 2020	Retrospective	663	25 (3.8)	56 (44-69)	67.1 (61-78)	48.4	51.6	-	14.2
16.	Du et al. [72]	Peer reviewed	China	8 Apr 2020	Prospective	179	21 (11.7)	57.6 \pm 13.7	70.2 \pm 7.7	54.2	45.8	-	-
17.	Wang et al. ^c [73]	Peer reviewed	China	15 Mar 2020	Retrospective	339	65 (19.2)	71 \pm 8	76 (70-83)	49.0	51.0	-	23.6
18.	Fu et al. [74]	Preprint	China	16 Mar 2020	Retrospective	200	34 (17.0)	-	-	49.5	50.5	161 (80.5)	25.5
19.	Paranjpe et al. [75]	Preprint	USA	26 Apr 2020	Prospective	889	310 (34.9)	65 (54-76)	75 (64-85)	70.5	29.5	-	43.3
20.	Cummings et al. ^e [76]	Preprint	USA	20 Apr 2020	Prospective	257	86 (33.5)	62 (51-72)	-	66.1	33.9	-	100.0
21.	Guo et al. ^c [77]	Preprint	China	14 Apr 2020	Retrospective	118	51 (43.2)	71.6	73.1 \pm 7.3	44.9	55.1	-	-
22.	Zhu et al. [78]	Preprint	China	8 Apr 2020	Retrospective	325	17 (5.2)	45 (34-61)	63 (57-76)	42.2	57.8	69 (21.2)	18.5
23.	Yin et al. ^c [79]	Preprint	China	7 Apr 2020	Retrospective	112	52 (46.4)	66 (56-76)	70 (62-78)	68.7	31.3	71 (63.4)	100.0
24.	Sun et al. ^c [80]	Preprint	China	6 Apr 2020	Retrospective	69	57 (82.6)	66 (59-73)	66 (62-77.5)	67.0	33.0	40 (58)	100.0
25.	Luo et al. [81]	Preprint	China	24 Mar 2020	Retrospective	403	100 (24.8)	56 (39-68)	71 (65-80)	47.9	52.1	175 (43.4)	50.9
26.	Zhang et al. [82]	Preprint	China	23 Mar 2020	Retrospective	315	47 (14.9)	57 (44-66)	66 (61-72)	55.6	44.4	103 (32.7)	56.5

27.	Solis et al. [83]	Preprint	Mexico	25 Apr 2020	Cross-sectional	7497	650	46	-	57.9	42.1	3726 (49.7)	-
28.	Yao et al. [84]	Peer reviewed	China	24 Apr 2020	Retrospective	108	12 (11.1)	52 (37-58)	65 (51-73.5)	39.8	60.2	25 (23.1)	15.7
29.	Zangrillo et al. [85]	Peer reviewed	Italy	23 Apr 2020	Prospective	73	17 (23.3)	61 (54-69)	-	83.6	16.4	-	45.2
30.	Yan et al. [86]	Peer reviewed	China	06 Apr 2020	Retrospective	193	108 (56.0)	64 (49-73)	70 (62-78)	59.1	40.9	94 (48.7)	47.7
31.	Tedeschi et al. [87]	Peer reviewed	Italy	27 Apr 2020	Prospective	609	174 (28.6)	68 (55-80)	-	68.0	32.0	-	-
32.	Nikpouraghdam et al. [88]	Peer reviewed	Iran	21 Apr 2020	Retrospective	2878	239 (8.3)	55.5 □ ± □ 1 5.2	65.4 ± □ 13.7	66.0	34.0	323 (10.9)	-
33.	Benelli et al. [89]	Preprint	Italy	30 Apr 2020	Retrospective	411	72 (17.5)	66.8 ± 16.4	81.1 ± 7.5	66.6	33.4	256 (62.3)	6.8
34.	Levy et al. [90]	Preprint	USA	30 Apr 2020	Retrospective	4933	1185 (24.0)	-	-	58.4	41.6	-	-
35.	Sneep et al. [91]	Preprint	UK	29 Apr 2020	Retrospective	200	28 (14.0)	63.4 ± 17.8	76 ± 14	57.5	42.5	-	11.0
36.	Mehra et al. [9]	Peer reviewed	Asia, Europe, and North America	01 May 2020	Prospective	8910	515 (5.8)	48.7 ± 16.6	55.8 ± 15.1	59.6	40.4	-	-
Studies included in the narrative review													
37.	Grasselli et al. ^{b, c} [33]	Peer reviewed	Italy	6 Apr 2020	Retrospective	1591	405 (25.6)	63 (56-70)	-	82.0	18.0	1043 (65.6)	100.0
38.	Du et al. ^g [29]	Peer reviewed	China	7 Apr 2020	Prospective	109	109 (100)	70.7 ± 10.9	70.7 ± 10.9	67.9	32.1	85 (77.9)	46.8
39.	Zhang et al. ^g [30]	Preprint	China	27 Feb 2020	Retrospective	82	82 (100)	72 (65-80)	72.5 (65-80)	65.9	34.1	62 (75.6)	17.1
40.	Kim et al. ^g [31]	Preprint	Korea	20 Apr 2020	Retrospective	101	101 (100)	76 ± 10.3	76 ± 10.3	52.5	47.5	100 (99.1)	84.2
41.	Yao et al. ^{c, g} [32]	Preprint	China	13 Mar 2020	Retrospective	55	55 (100)	70.7 ± 13.5	70.7 ± 13.5	67.0	33.0	43 (78)	100.0
42.	Cheng et al. [34]	Peer reviewed	China	20 Mar 2020	Prospective	701	113 (16.1)	63 (50-71)	-	52.4	47.6	297 (42.4)	10.4
	Total or average					36398	5310 (14.6)	60.5 ± 8.0	69.9 ± 5.6	60.1	39.9	7558 (42.5)	38.4

Note: Sample with missing value were excluded from percentage calculation; ^a Complete data available for 17794 patients, and missing sample had incomplete information or directly indicated the likelihood of mortality or did not report people count with any forms of existing comorbidities; ^b Included only the patients in ICU or in critical condition with or without pre-existing morbidities, and data was available for 10154 patients; ^c included only aged or elderly people as sample; ^d Not included in total calculation as the study was a secondary data analysis; ^e Included only the patients in ICU or in critical condition; ^f this study included only hospitalized patients. ^g Sample included only death patients; Study of Tedeschi et al [87] had all patients more than one comorbidities.

Table 2. Percentage distribution of comorbidities among patients reported in admission COVID-19 infection.

Pre-existing morbidities	Distribution of comorbidities for total patients	(%)
<i>Cardiovascular system disease</i>	12760	51.2
Hypertension	9085	36.5
Cardiovascular Disease ^a	2957	11.9
Arrhythmia	393	1.6
Heart failure	325	1.3
<i>Immune and metabolic disorders</i>	5966	23.9
Diabetes	5478	22.0
Immunosuppression	406	1.6
Autoimmune disease	8	0.03
Immunodeficiency	3	0.01
Metabolic disorder	4	0.02
<i>Respiratory system diseases</i>	1975	7.9
Chronic lung disease	1010	4.1
Chronic obstructive pulmonary disease (COPD)	577	2.3
Asthma	355	1.4
Acute respiratory distress syndrome (ARDS)	11	0.04
Chronic bronchitis	10	0.04
Tuberculosis	9	0.04
Pulmonary emphysema	3	0.01
<i>Any types of cancer</i>	224	0.9
Malignancy	33	0.1
Cancer	92	0.4
Tumor	16	0.1
Carcinoma	4	0.02
<i>Cerebrovascular system diseases</i>	198	0.8
Cerebrovascular disease ^b	189	0.8
Peripheral vascular disease	9	0.04
<i>Renal system diseases</i>	779	3.1
Chronic kidney disease	758	3.0
Urinary disease	21	0.1
<i>Liver system diseases</i>	2844	11.4
Chronic liver disease	45	0.2
Cirrhosis	25	0.1
Fatty liver disease	15	0.1
Hepatitis B	21	0.1
Hyperlipidemia	2732	11.0
Inflammatory disease	6	0.02
<i>Gastrointestinal system diseases</i>	61	0.2
Chronic digestive disorder	21	0.1
Gastrointestinal disease	40	0.2
Others ^c	109	0.4
Grand total	24916	100.0

Note: Patients with more than one comorbidity were missing. Calculated in column percentage format; One study (Caramelo et al.) was excluded from prevalence calculation as the study had not reported frequency of comorbidities; Malnutrition and dementia was skipped from the analysis as we found only one patient (Yang et al.); ^a Included all types of cardiovascular diseases like coronary heart diseases or artery disease; ^b Included Cerebral infarction; ^c anemia, bowel disease, tissue disease, etc.

Table 3. Summary effects of type of morbidity categories on death among patients infected with COVID-19 disease, publication bias, and Trim

Characteristics	Number of studies	Number of times morbidity reported	Summary estimates		Egger bias test p-value	Trim and Fill estimates ^a	
			OR (95% CI)	Heterogeneity Index (I^2)		Missing studies no.	OR (95% CI)
Cardiovascular system diseases	33	64	3.32 (2.79-3.95) ^b	83.8%	0.001	13	2.82 (2.38-3.34)
Immune and metabolic disorders	31	38	2.39 (2.00-2.85) ^b	64.5%	0.019	6	2.14(1.78-2.57)
Respiratory system diseases	28	33	2.02 (1.80-2.26) ^c	71.2%	0.031	3	2.36 (1.79-3.11)
Any types of cancer	20	20	2.22 (1.63-3.03) ^c	67.7%	0.891	0	2.22 (1.63-3.03)
Cerebrovascular system diseases	15	16	4.12 (3.04-5.58) ^c	25.7%	0.048	2	3.94 (2.92-5.31)
Renal system diseases	21	21	3.02 (2.60-3.51) ^c	56.0%	0.024	4	2.86 (2.47-3.32)
Liver system diseases	14	17	1.44 (1.21-1.71) ^c	0.0%	0.001	6	1.38 (1.16-1.63)
Gastrointestinal system diseases	5	5	1.33 (0.56-3.19) ^c	0.0%	0.170	0	1.33 (0.56-3.19)

and Fill estimates

Note: Person survived from COVID-19 infection is considered as reference category; CI, confidence interval; OR, odds ratio.

^a The trim-and-fill method simulates studies that are likely to be missing from the literature due to publication or other forms of bias. The trim-and-fill OR estimates what the pooled OR would be if these missing studies were included in the analysis; ^b Summary estimates were based on fixed-effects methods; ^c Summary estimates were based on random-effects methods.

Table 4. Stratified analysis of the likelihood of death among patients with cardiovascular system diseases infected with COVID-19 diseases

Characteristics	Pooled OR (95% CI)	P	
		Heterogeneity	Meta-regression
Type of diseases			
Cardiovascular diseases	3.35 (2.53-4.42)	<0.01	0.95
Hypertension	3.28 (2.53-4.24)	<0.01	
Heart failure	3.98 (2.96-5.34)	0.348	
Arrythmia	3.00 (1.96-4.57)	0.192	
Study country			
Australia	3.68 (2.06-6.57) ⁺⁺	NA	<0.01
Italy	3.95 (2.82-5.54)	0.239	
China	4.36 (3.40-5.58)	<0.01	
United State of America	2.74 (2.00-3.75)	<0.01	
Asia, Europe, and North America	1.98 (1.16-3.38)	<0.01	
Iran	1.75 (0.95-3.22)	0.685	
UK	2.73 (1.17-6.35) ⁺⁺	NA	
Mexico	1.12 (0.71-1.75)	<0.05	
Study design			
Cross-sectional	3.79 (2.86-5.03)	<0.01	<0.05
Prospective cohort	3.15 (2.25-4.41)	<0.01	
Retrospective cohort	1.82 (0.71-1.75)	<0.05	
Adjustment factor			
Unadjusted	3.94 (3.24-4.80)	<0.01	<0.05
Adjusted	1.81 (1.30-2.53)	<0.01	
Sample size			
>1134	2.19 (1.59-3.02)	<0.01	<0.01
≤1134	3.78 (3.14-4.56)	<0.01	
Mean age of total sample			
≤60	3.70 (2.70-5.07)	<0.01	0.593
>60	3.14 (2.60-3.80)	<0.01	
Mean age of death sample			
≤69	4.39 (3.05-6.32)	<0.01	0.100
>69	3.00 (2.46-3.66)	<0.01	

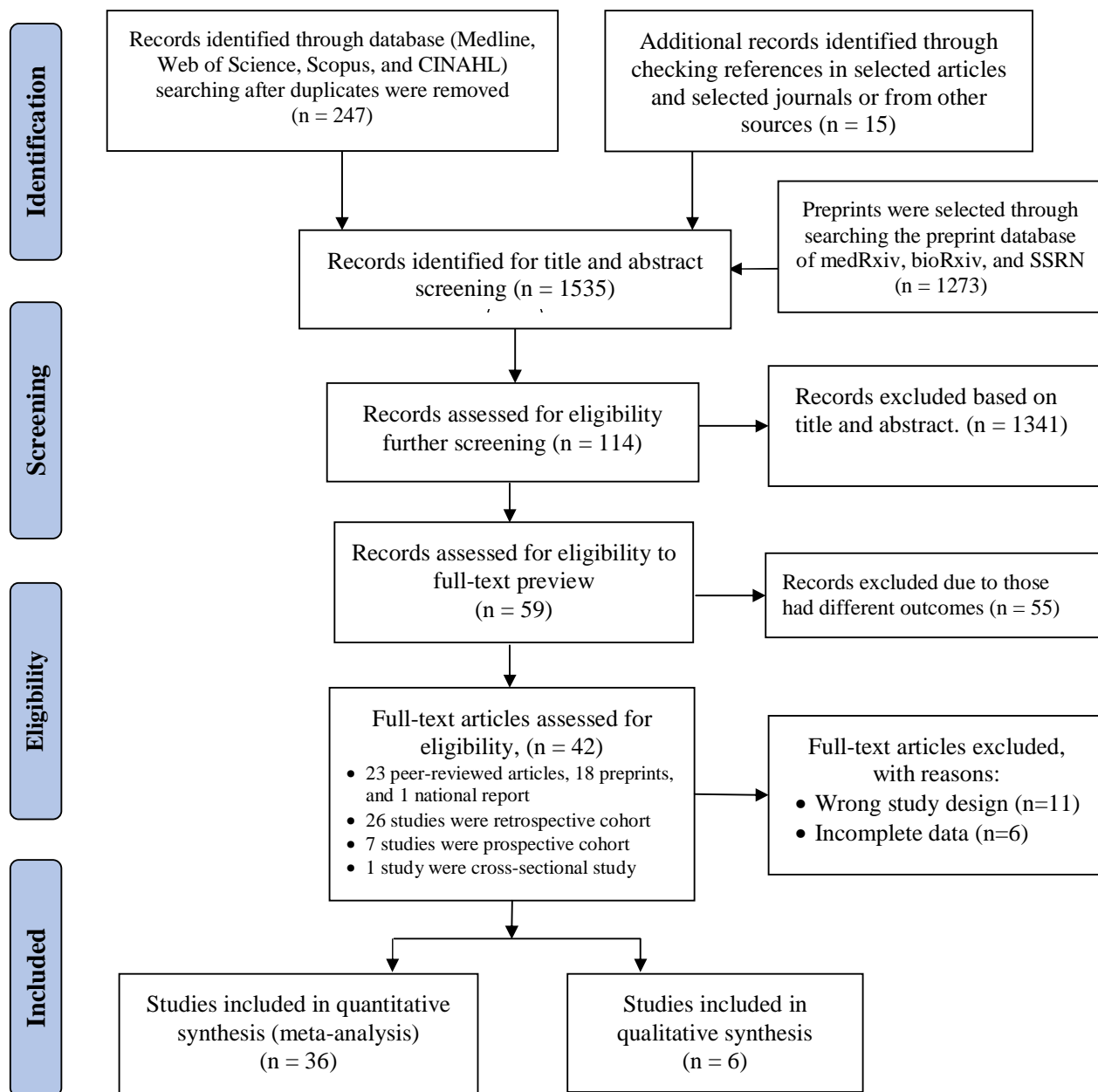


Figure 1. Schematic representation of studies included in the systematic review and meta-analysis using PRISMA checklist and flow diagram