

1 **Characteristics of 1,573 healthcare workers who underwent nasopharyngeal swab for**  
2 **SARS-CoV-2 in Milano, Lombardy, Italy**

3 \*Andrea Lombardi<sup>1</sup>, \*Dario Consonni<sup>2</sup>, Michele Carugno<sup>2,3</sup>, Giorgio Bozzi<sup>1</sup>, Davide  
4 Mangioni<sup>1</sup>, Antonio Muscatello<sup>1</sup>, Valeria Castelli<sup>1</sup>, Emanuele Palomba<sup>1</sup>, Anna Paola Cantù<sup>4</sup>,  
5 Ferruccio Ceriotti<sup>5</sup>, Basilio Tiso<sup>4</sup>, Angela Cecilia Pesatori<sup>2,3</sup>, Luciano Riboldi<sup>6</sup>, Alessandra  
6 Bandera<sup>1,7</sup>, Andrea Gori<sup>1,7</sup>

7 <sup>1</sup>*Infectious Diseases Unit, Foundation IRCCS Ca' Granda Ospedale Maggiore Policlinico,*  
8 *Milano, Italy;* <sup>2</sup>*Epidemiology Unit, Foundation IRCCS Ca' Granda Ospedale Maggiore*  
9 *Policlinico, Milano, Italy;* <sup>3</sup>*Department of Clinical Sciences and Community Health,*  
10 *University of Milano, Milano, Italy;* <sup>4</sup>*Medical Direction, Foundation IRCCS Ca' Granda*  
11 *Ospedale Maggiore Policlinico, Milano, Italy;* <sup>5</sup>*Clinical Laboratory, Foundation IRCCS Ca'*  
12 *Granda Ospedale Maggiore;* <sup>6</sup>*Occupational Health Unit, Foundation IRCCS Ca' Granda*  
13 *Ospedale Maggiore Policlinico, Milano, Italy;* <sup>7</sup>*Centre for Multidisciplinary Research in*  
14 *Health Science (MACH), University of Milano, Milano, Italy.*

15 \* Shared first authorship.

16 **Corresponding author:** Andrea Lombardi, Infectious Diseases Unit, Foundation IRCCS Ca'  
17 Granda Ospedale Maggiore Policlinico Via Francesco Sforza 35, 20122 Milan, Italy. E-mail:  
18 [andrea.lombardi@policlinico.mi.it](mailto:andrea.lombardi@policlinico.mi.it) Tel: +393409010358

19 **Abstract electronic words count:** 250

20 **Main text electronic words count:** 2123

21 **Keywords:** COVID-19; SARS-CoV-2; healthcare operators; nosocomial transmission;  
22 nasopharyngeal swab.

23 **Abstract**

24 **Background** The management of healthcare workers (HCWs) exposed to confirmed cases of  
25 COVID-19 is still a matter of debate. It is unclear whether these subjects should be tested in  
26 the absence of symptoms and if those can guide diagnosis.

27 **Methods** Occupational and clinical characteristics of all the consecutive HCWs who  
28 performed a nasopharyngeal swab for the detection of SARS-CoV-2 in a University Hospital  
29 from February 24, 2020, to March 31, 2020, were collected. Frequencies of positive tests  
30 were compared according to selected variables. Multivariable logistic regression analyses  
31 were then applied.

32 **Findings** Positive tests were 138 among 1,573 HCWs (8.8%, 95% confidence interval [CI]:  
33 7.4-10.3), with a marked difference between symptomatic (20.2%, 95% CI: 16.7-24.1) and  
34 asymptomatic (3.7%, 95% CI: 2.7-5.1) subjects ( $p < 0.001$ ). Physicians were the group with  
35 the highest frequency of positive tests (10.6%, 95% CI: 8.3-13.4) whereas clerical workers  
36 and technicians displayed the lowest frequency (2.9%, 95% CI: 0.8-7.3). The likelihood of  
37 being positive increased with the number of reported symptoms and the strongest predictors  
38 of a positive test were taste and smell alterations (odds ratio [OR]= 29.7) and fever (OR =  
39 7.21). The median time from first positive test to a negative test was 23 days (95% CI: 19-  
40 24).

41 **Interpretation** In this Italian group of HCWs exposed to confirmed cases of COVID-19 the  
42 presence of symptoms, especially taste and smell alterations and fever, was associated with  
43 SARS-CoV-2 infection. The median time to clear the virus from nasopharynx was 23 days.

44 **Funding:** none related to the content of this manuscript.

45 **Research in context**

46 **Evidence before this study** We searched PubMed for articles published in English up to  
47 April 25, 2020, using the keywords “SARS-CoV-2”, “COVID-19”, “2019-nCoV”, AND  
48 “healthcare workers”, “HCW”, AND “testing”, “nasopharyngeal swab”. We found one  
49 article: *Roll-out of SARS-CoV-2 testing for healthcare workers at a large NHS Foundation*  
50 *Trust in the United Kingdom, March 2020* published in *Euro Surveillance*. Reviewing the  
51 pre-print website medRxiv with the same keywords we identified two additional studies:  
52 *SARS-CoV-2 infection in Health Care Workers in a large public hospital in Madrid, Spain,*  
53 *during March 2020,* and *SARS-CoV-2 infection in 86 healthcare workers in two Dutch*  
54 *hospitals in March.*

55 **Added value of this study** We showed that, even if symptomatic healthcare workers had a  
56 much higher probability of positive test, almost one third of those infected were  
57 asymptomatic. Specific symptoms, namely taste and smell alterations and fever, were  
58 strongly associated with the infection. Finally, the median time to clear the virus from  
59 nasopharynx was 23 days.

60 **Implications of all the available evidence** Screening strategies for healthcare workers  
61 exposed to COVID-19 patients should take in account the significant proportion of  
62 asymptomatic carriers and the predictive role of specific symptoms. Moreover, healthcare  
63 workers coming back to work after a positive test should be aware of the long-time of viral  
64 shedding from nasopharynx.

## 65 **Introduction**

66 Severe acute respiratory syndrome coronavirus 2 (SARS-CoV-2) is a previously unknown  
67 virus which recently jumped from a not yet identified animal host to humans and it is  
68 responsible of coronavirus disease 2019 (COVID-19).<sup>1</sup> This disease is characterized by a  
69 wide array of manifestations, ranging from an asymptomatic infection to a severe respiratory  
70 insufficiency requiring mechanical ventilatory support.<sup>2</sup> The virus has now spread worldwide  
71 from China, causing the first pandemic of the XXI century, disrupting health-care services in  
72 the affected countries and exacting a terrific toll of human lives.<sup>3-4</sup> A critical element of the  
73 virus is its basic reproduction number ( $R_0$ ) ranging from 2.76 to 3.28.<sup>5,6</sup> This is the  
74 consequence of specific viral properties, the large number of asymptomatic, and thus  
75 undetected, carriers and the long duration of viral detectability, even after clinical cure.<sup>7-10</sup>  
76 Currently, the only available method to ascertain the presence of SARS-CoV-2 infection is  
77 the detection of unique sequences of virus RNA by real-time reverse-transcription  
78 polymerase chain reaction (rRT-PCR) with confirmation by nucleic acid sequencing when  
79 necessary.<sup>10</sup>

80 Healthcare workers (HCWs) are a crucial actor of this pandemic with a Janus role. Indeed,  
81 they are acting in an emergency situation to mitigate the effects of the pandemic, but  
82 consequently they are continuously at risk of being infected. At the same time, they are in  
83 contact with the most fragile elements of our society, those who need health assistance. It is  
84 therefore mandatory to avoid that infected HCWs act as spreaders of the disease.

85 Unfortunately, it is still unclear which microbiologic investigations and procedures should be  
86 adopted toward HCWs in COVID-19 settings, especially to those exposed to confirmed cases  
87 of COVID-19 and at risk for infection. To answer this question, we reviewed all the  
88 nasopharyngeal swab performed in HCWs exposed to confirmed cases of COVID-19 at the  
89 Foundation IRCCS Ca' Granda Ospedale Maggiore Policlinico located in Milan, the capital

90 of Lombardy, by large the Italian region mostly affected by COVID-19.<sup>11</sup> We assessed  
91 frequency of positive tests among symptomatic and asymptomatic subjects and evaluated the  
92 association between occupation, symptoms (type and number), and presence of the infection.  
93 Furthermore, we also calculated the median time between the day of diagnosis (first positive  
94 test) and the day in which the HCW became test-negative.

## 95 **Materials and methods**

96 We collected occupational and clinical characteristics of all the consecutive HCWs who  
97 performed a nasopharyngeal swab for the detection of SARS-CoV-2 at the Foundation  
98 IRCCS Ca' Granda Ospedale Maggiore Policlinico in Milan, Italy in the period from  
99 February 24, 2020, (the day after the first COVID-19 case occurred in a physician of our  
100 hospital) to March 31, 2020. For these workers, we collected laboratory results as of April 9,  
101 2020. We tested HCWs at risk for infection, which is defined as a contact with a patient or  
102 another HCW with (or later diagnosed with) SARS-CoV-2 infection. HCWs were subdivided  
103 into physicians (including residents), nurses and midwives, healthcare assistants, health  
104 technicians, and clerical workers and technicians. All the information was collected by the  
105 infectious disease notification form associated to each test. Subjects were defined as  
106 symptomatic if presented any of the following in the 14 days preceding the test: fever, cough,  
107 dyspnoea, asthenia, myalgia, coryza, sore throat, headache, ageusia or dysgeusia, anosmia or  
108 parosmia, ocular symptoms, diarrhoea, nausea, and vomit. The study was approved by the  
109 Ethical Committee of our institution and was conducted in accordance with the Helsinki  
110 Declaration.

### 111 *SARS-CoV-2 detection*

112 For viral detection two different methods were used. The first one employed Seegene Inc  
113 reagents (Seoul, Korea). RNA extraction was performed with STARMag Universal Cartridge

114 kit on Nimbus instrument (Hamilton, Agrate Brianza, Italy) and amplification with Allplex®  
115 2019-nCoV assay. The second one employed a GeneFinder® COVID-19 Plus RealAmp Kit  
116 (OSANG Healthcare, Anyangcheondong-ro, Dongan-gu, Anyang-si, Gyeonggi-do, Korea) on  
117 ELITech InGenius® instrument (Torino, Italy). Both assays identify the virus by multiplex  
118 rRT-PCR targeting three viral genes (E, RdRP and N).

### 119 *Statistical analysis*

120 We compared frequencies of positive tests according to selected variables using chi-squared  
121 test, adjusted odds ratios (OR), and 95% confidence intervals (CI) calculated with a  
122 multivariable logistic regression model including as covariates gender, age class, occupation,  
123 and having reported any symptom. We evaluated the discriminating ability of the number of  
124 reported symptoms in a univariate logistic model and assessed the performance of each of 11  
125 groups of symptoms by fitting a multivariable logistic model containing all groups of  
126 symptoms. Area under the ROC curve (AUC) was calculated after these models. We  
127 calculated the time since first positive test until subjects became negative by using the  
128 Kaplan-Meier function. Log-rank test was used to evaluate the association of gender, age  
129 class, or symptoms with median time to test negativity. Statistical analysis was performed  
130 with Stata 16 (StataCorp. 2019)

### 131 **Results**

132 In the period from February 24, 2020, to March 31, 2020, 1,573 HCWs, 1,010 women  
133 (64.2%) and 563 men (35.8%) performed at least a first nasopharyngeal swab for the  
134 detection of SARS-CoV-2. Mean age was 44.5 years and the majority (about 70%) were  
135 physicians (including residents) or nurses/midwives (table 1). One third of women and one  
136 fourth of men reported having had at least one symptom at the time of testing. The majority  
137 (73.9%) performed only one test, while 411 individuals (26.1%) had from two to six tests.

138 The overall frequency of subjects with at least one positive test was 8.8% (95% CI: 7.4-  
139 10.3%) (table 2). The frequency of positive tests ranged from 8.0% (healthcare assistants) to  
140 10.6% (physicians), much higher than among clerical workers (2.9%). Among subjects with  
141 symptoms the frequency of positive tests was 20.2%, while among asymptomatic HCWs the  
142 frequency was much lower (3.7%). However, among the 138 HCWs with positive test,  
143 41/138 (29.7%) were asymptomatic. The predictive role of occupation and presence of  
144 symptoms was confirmed in the multivariable logistic model.

145 The likelihood of being positive increased with the number of reported symptoms (table 3).  
146 All symptoms excluding sore throat were positively associated with test positivity, especially  
147 fever and taste and smell alterations (table 4). In a multivariable model, the strongest  
148 predictors of a positive test were taste and smell alterations (OR = 29.7) and fever (OR =  
149 7.21), followed by myalgias, asthenia, ocular symptoms, and dyspnoea (ORs ranging from  
150 1.98 and 2.77). The AUC from the model including these six group of symptoms was 0.74  
151 (95% CI: 0.70-0.79), similar to an AUC of 0.77 (95% CI: 0.72-0.81) when including all  
152 symptoms. Sore throat was negatively associated with positivity (OR = 0.35).

153 Among the 138 positive HCWs, 99 (71.7%) were already positive at first testing, while 39  
154 (28.3%) were found positive in a subsequent test. At the time of last test performed, 69/138  
155 (50.0%) were still positive. The median time from first positive test to a negative test was 23  
156 days (95% CI: 19-24) (figure 1). However, 9/69 subjects (13.0%) were still positive 24 to 31  
157 days since first positive test. Median time was identical in subjects with symptoms (23 days,  
158 95% CI: 18-26) and in those without symptoms (23 days, 95% CI: 19-29). Median time was  
159 also not associated with gender ( $p=0.84$ ) nor age ( $p=0.83$ ). As of March 31, 2020, five  
160 workers, four men (three physicians and a nurse) and a woman (clerical worker) were  
161 hospitalized.

162 A minority of the HCWs (81/1,537, 5.3%) reported to have had a contact with an infected  
163 person outside the hospital (relatives, colleague, or friends). Of these, 12 (8.7%) were found  
164 to be positive.

## 165 **Discussion**

166 In this Italian group of HCWs exposed to confirmed cases of COVID-19, the presence of  
167 symptoms, and particularly taste and smell alterations and fever, was associated with  
168 positivity of nasopharyngeal swab for SARS-CoV-2. Despite the low relative frequency of  
169 positive tests among asymptomatic subjects, their number was high in absolute terms (just  
170 about one third of all infected subjects). Interestingly, the AUC of a model considering six  
171 groups of symptoms (fever, myalgia, asthenia, ocular symptoms, dyspnoea, and taste and  
172 smell alterations) was 0.74. Based on these results, it seems reasonable to tailor the screening  
173 approach of HCWs at risk based on the resources available. In low-resource settings we  
174 suggest focusing to test those with symptoms to maximize efficacy, especially considering  
175 the continuous exposure of HCWs to at risk situations, thus requiring repeated testing  
176 sessions. Nevertheless, it should be underlined that in our study 41/138 subjects (29.7%) were  
177 infected but displayed no symptoms, meaning that one third of those infected can be lost with  
178 a symptoms-based screening strategy. Therefore, in middle- and high-resource settings a  
179 mass screening for all HCWs exposed to confirmed COVID-19 cases appears the best  
180 approach to limit the spread of the virus. More detailed cost-effectiveness study,  
181 encompassing the epidemiological context, should be performed to define the optimal  
182 method.

183 The frequency of positive subjects among symptomatic workers in our study population  
184 (20.2%) is similar to the one (18%) reported by Keeley and colleagues<sup>12</sup> in their cohort  
185 composed of 1,533 symptomatic HCWs presenting with fever plus one among cough, sore



186 throat, runny nose, myalgia, headache and persistent cough. However, it should be remarked  
187 that focussing only on symptomatic workers results in missing a significant number of  
188 infected subjects. Indeed, we had 67/138 (48.5%) positive HCWs presenting without or with  
189 only one symptom. When we consider the overall frequency, our proportion of positive  
190 subjects (8.8%) is comparable to the 6% described by Kluytmans-van den Bergh et al. in a  
191 small Dutch cohort of HCWs, whereas it is significantly lower than the 38% reported by  
192 Folgueira and colleagues in their Spanish cohort.<sup>13,14</sup>

193 When stratified according to occupation, test-positive frequencies were clearly higher among  
194 subsets with direct contact with patients (physicians including residents, nurses and  
195 midwives, healthcare assistants and health technicians) than those without (clerical works and  
196 technicians). Consequently, careful screening of these groups of workers should be  
197 mandatory. No differences in terms of infection prevalence were seen between different age  
198 groups nor between men and women, suggesting that risk factors for acquiring COVID-19  
199 among HCWs are unrelated to age and sex.

200 Another relevant point is the significant number of subjects who were negative at the first test  
201 but resulted positive when tested a second time. This might represent a serious concern, as a  
202 discrete fraction of those can further spread the virus unnoticed, thus hampering the efficacy  
203 of the screening strategy. It should be noted, however, that the second test was performed on  
204 a small number of operators and not on a routine basis, making these considerations subject  
205 to several potential biases. In addition, in a relevant proportion of our population we could  
206 not retrieve information about the most likely date of exposure to a documented COVID-19  
207 case. Thus, we cannot exclude a recent contact in which case the first test may have been  
208 performed too early (i.e. still in the incubation period which has been estimated to be five  
209 days), before a sufficient amount of viral particles is detectable in the nasopharynx.<sup>15</sup>

210 Moreover, it has to be considered that HCWs employed in COVID-19 units/hospitals are at

211 risk of SARS-CoV-2 exposure on a daily basis and therefore repeated exposures, even  
212 unnoticed, can occur also after the first one who motivated the test. Moreover, technical  
213 limitation can be responsible of falsely negative test, considering that the sensitivity of  
214 nasopharyngeal swab for SARS-CoV-2 detection has been estimated to be around 71%.<sup>16</sup>

215 Finally, even if it was not the main goal of our study (because a longer follow-up time would  
216 be required), we observed a median time from first positive test to a negative test of 23 days.  
217 This is in accordance with several already published reports and have a significant impact on  
218 the efficiency of health systems.<sup>17-19</sup> Indeed, it means that an infected HCW will be  
219 unavailable to perform its duty for at least three weeks since diagnosis (or even four weeks if  
220 we consider the upper 95% confidence limit). Our results were based on a three genes  
221 qualitative RT-PCR. To understand the real significance of this viral detection new studies  
222 assessing the infectivity of viral particles and the possible impact of quantitative techniques  
223 are needed.

224 In conclusion, our results show that symptomatic HCWs exposed to confirmed cases of  
225 COVID-19 are almost eight times more likely to be infected than asymptomatic HCWs.  
226 Nevertheless, also a non-negligible amount of asymptomatic HCWs is infected and accounts  
227 for almost one third of positive tests. Therefore, screening strategies may be tailored  
228 according to the available resources. Taste and smell alterations and fever should be  
229 considered the most relevant alarm bells suggesting the opportunity of performing a test.

230 Finally, the median time to become non-infective exceeded three weeks. Consequently, the  
231 suggested quarantine period of 14 days after exposure to a confirmed case should be revised.  
232 The correct length of this period as well as the best moment to perform a nasopharyngeal  
233 swab (measured in days after exposure) have to to be determined.

234 **Authors contributions** AL, DC and AG conceived the study. APC, BT, VC, EP and LR  
235 collected the data. DC, MC, and ACP performed statistical analyses. AL and DC wrote the  
236 first draft. All co-authors revised the manuscript.

237 **Acknowledgments:** We thank the personnel of the Virology Unit and SPIO (Servizio  
238 Prevenzione e Igiene Ospedaliera), Francesco De Palo, Lidia Guerrieri, Lorenzo Bordini,  
239 Carlo Nava, Antonio Lela, Enrico Radice, and Carolina Mensi for their help in data collection  
240 and editing. The authors are also grateful to Simone Villa for the critical review of the  
241 manuscript.

242 **Conflict of interests:** none related to the content of this manuscript.

## 243 References

- 244 1 World Health Organization (WHO). World Health Organization (WHO), COVID-19 definitions. 2020.  
245 [https://www.who.int/emergencies/diseases/novel-coronavirus-2019/technical-guidance/naming-the-  
coronavirus-disease-\(covid-2019\)-and-the-virus-that-causes-it](https://www.who.int/emergencies/diseases/novel-coronavirus-2019/technical-guidance/naming-the-<br/>246 coronavirus-disease-(covid-2019)-and-the-virus-that-causes-it) (accessed March 29, 2020).
- 247 2 Wu Z, McGoogan JM. Characteristics of and Important Lessons From the Coronavirus Disease 2019  
248 (COVID-19) Outbreak in China: Summary of a Report of 72 314 Cases From the Chinese Center for  
249 Disease Control and Prevention. *Jama* 2020; **2019**. DOI:10.1001/jama.2020.2648.
- 250 3 Villa S, Lombardi A, Mangioni D, *et al.* The COVID-19 pandemic preparedness or lack thereof: from  
251 China to Italy. *Glob Heal Med* 2020; **6**: 1–5.
- 252 4 WHO Director-General’s opening remarks at the media briefing on COVID-19 - 11 March 2020.  
253 [https://www.who.int/dg/speeches/detail/who-director-general-s-opening-remarks-at-the-media-briefing-  
on-covid-19---11-march-2020](https://www.who.int/dg/speeches/detail/who-director-general-s-opening-remarks-at-the-media-briefing-<br/>254 on-covid-19---11-march-2020) (accessed March 17, 2020).
- 255 5 Liu Y, Gayle AA, Wilder-Smith A, Rocklöv J. The reproductive number of COVID-19 is higher  
256 compared to SARS coronavirus. *J Travel Med* 2020; : 1–4.
- 257 6 Remuzzi A, Remuzzi G. COVID-19 and Italy: what next? *Lancet* 2020; **2**: 10–3.
- 258 7 Huang C, Wang Y, Li X, *et al.* Clinical features of patients infected with 2019 novel coronavirus in  
259 Wuhan , China. *Lancet* 2020; **6736**: 1–10.
- 260 8 Lombardi A, Bozzi G, Mangioni D, *et al.* Duration of quarantine in hospitalized patients with severe  
261 acute respiratory syndrome coronavirus 2 (SARS-CoV-2) infection: a question needing an answer. *J  
262 Hosp Infect* 2020; **2**. DOI:10.1016/j.jhin.2020.03.003.
- 263 9 Rothe C, Schunk M, Sothmann P, *et al.* Transmission of 2019-nCoV Infection from an Asymptomatic  
264 Contact in Germany. *N Engl J Med* 2020; : 2019–20.
- 265 10 Kumar S, Maurya VK, Prasad AK, Bhatt MLB, Saxena SK. Structural, glycosylation and antigenic  
266 variation between 2019 novel coronavirus (2019-nCoV) and SARS coronavirus (SARS-CoV).  
267 *VirusDisease* 2020; **31**: 1–9.
- 268 11 Cereda D, Tirani M, Rovida F, *et al.* The early phase of the COVID-19 outbreak in Lombardy, Italy.  
269 2020. <http://arxiv.org/abs/2003.09320>.
- 270 12 Keeley AJ, Evans C, Colton H, *et al.* Roll-out of SARS-CoV-2 testing for healthcare workers at a large  
271 NHS Foundation Trust in the United Kingdom, March 2020. *Euro Surveill* 2020; **25**: 1–4.
- 272 13 Folgueira MD, Muñoz-Ruipérez C, Alonso-López MÁ, Delgado R, Groups on behalf of the H 12 de  
273 OC-19 S. SARS-CoV-2 infection in Health Care Workers in a large public hospital in Madrid, Spain,  
274 during March 2020. *medRxiv* 2020.
- 275 14 Kluytmans-van den Bergh MFQ, Buiting AGM, Pas SD, *et al.* SARS-CoV-2 infection in 86 healthcare  
276 workers in two Dutch hospitals in March. *medRxiv* 2020; : 1–16.
- 277 15 Lauer SA, Grantz KH, Bi Q, *et al.* The Incubation Period of Coronavirus Disease 2019 (COVID-19)  
278 From Publicly Reported Confirmed Cases: Estimation and Application. *Ann Intern Med* 2020; **2019**.  
279 DOI:10.7326/M20-0504.
- 280 16 Fang Y, Zhang H, Xie J, Lin M, Ying L. Sensitivity of Chest CT for COVID-19: Comparison to RT-  
281 PCR. *Radiology* 2020. DOI:10.1001/jama.2020.2648.
- 282 17 Zhou F, Yu T, Du R, *et al.* Clinical course and risk factors for mortality of adult inpatients with COVID-  
283 19 in Wuhan, China: a retrospective cohort study. *Lancet* 2020; **395**: 1054–62.
- 284 18 Zou L, Ruan F, Huang M, Liang L, Huang H. SARS-CoV-2 Viral Load in Upper Respiratory  
285 Specimens of Infected Patients. *N Engl J Med* 2020; **382**: 1175–7.
- 286 19 Liu Y, Yan LM, Wan L, *et al.* Viral dynamics in mild and severe cases of COVID-19. *Lancet Infect Dis*  
287 2020; **2019**: 2019–20.

288

289 **Figures/tables**

290 **Table 1.** Characteristics of 1,573 healthcare workers tested for SARS-CoV-2 in Milan, Italy,  
 291 in the period from February 24, 2020, to March 31, 2020.

	<b>Women</b>		<b>Men</b>		<b>Total</b>	
<b>Variable</b>	N	%	N	%	N	%
All subjects	1010	100	563	100	1573	100
Age (years), mean (min-max)	44.2	(21-67)	45.1	(22-76)	44.5	(21-76)
Age (years)						
<30	152	15.1	96	17.0	248	15.8
30-39	255	25.2	132	23.5	387	24.6
40-49	217	21.5	109	19.4	326	20.7
50-59	314	31.1	130	23.1	444	28.2
60+	72	7.1	96	17.0	168	10.7
Occupation						
Physicians, including residents	295	29.2	287	51.0	582	37
Nurses, midwives	388	38.4	134	23.8	522	33.2
Healthcare assistants	122	12.1	40	7.1	162	10.3
Health technicians*	133	13.2	37	6.6	170	10.8
Clerical workers, technicians	72	7.1	65	11.5	137	8.7
At least one symptom	343	34.0	137	24.3	480	30.5
No. tests performed						
1	759	75.1	403	71.6	1162	73.9
2	161	15.9	99	17.6	260	16.5
3	59	5.8	40	7.1	99	6.3
4	19	1.9	12	2.1	31	2.0
5	9	0.9	3	0.5	12	0.8
6	3	0.3	6	1.1	9	0.6

292

293 \*Includes biologists, radiology and laboratory technicians, psychologists, other health  
 294 technicians

295

296 **Table 2.** Association between selected variables and frequency of at least one positive test  
 297 among 1,573 healthcare workers tested for SARS-CoV-2 in Milan, Italy, in the period from  
 298 February 24, 2020, to March 31, 2020.

	<b>Subjects</b>	<b>Positive test</b>				
	N	N	%	p-value*	OR**	95% CI**
All	1573	138	8.8	..	..	7.4-10.3
Women	1010	83	8.2	0.30	1.00	Reference
Men	563	55	9.8	..	1.41	0.95-2.10
Age (years)						
<30	248	29	11.7	0.50	1.00	Reference
30-39	387	34	8.8	..	0.76	0.44-1.33
40-49	326	26	8.0	..	0.66	0.37-1.20
50-59	444	35	7.9	..	0.71	0.40-1.26
60+	168	14	8.3	..	0.69	0.34-1.41
Occupation						
Physicians, including residents	582	62	10.6	0.07	4.95	1.72-14.3
Nurses, midwives	522	43	8.2	..	3.11	1.07-9.04
Healthcare assistants	162	13	8.0	..	2.98	0.92-9.62
Health technicians	170	16	9.4	..	3.33	1.06-10.5
Clerical workers, technicians	137	4	2.9	..	1.00	Reference
Any symptom						
No	1093	41	3.7	<0.001	1.00	Reference
Yes	480	97	20.2	..	7.55	5.07-11.2

299  
 300 Abbreviations: CI, confidence interval; OR, odds ratio.  
 301 \*From chi-squared test.  
 302 \*\*From a multivariable logistic model including gender, age class, occupation, and any  
 303 symptom.  
 304

305 **Table 3.** Association between number of symptoms and frequency of at least one positive test  
306 among 1,573 healthcare workers tested for SARS-CoV-2 in Milan, Italy, in the period from  
307 February 24, 2020, to March 31, 2020.

	<b>Subjects</b>	<b>Positive test</b>				
	N	N	%	p-value*	OR**	95% CI**
<b>Number of symptoms</b>						
No symptoms	1093	41	3.7	<0.001	1.00	Reference
1	191	26	13.6	..	4.04	2.41-6.79
2	145	29	20.0	..	6.41	3.84-10.7
3	98	27	27.8	..	9.76	5.67-16.8
4	35	10	28.6	..	10.3	4.63-22.8
5	7	3	42.8	..	19.2	4.17-88.8
6	4	2	50.0	..	25.7	3.53-186

308  
309 Abbreviations: CI, confidence interval; OR, odds ratio.  
310 \*From chi-squared test.  
311 \*\*From a univariate logistic model.

312

313 **Table 4.** Association between selected symptoms and frequency of at least one positive tests  
 314 among 1,573 healthcare workers tested for SARS-CoV-2 in Milan, Italy, in the period from  
 315 February 24, 2020, to March 31, 2020.

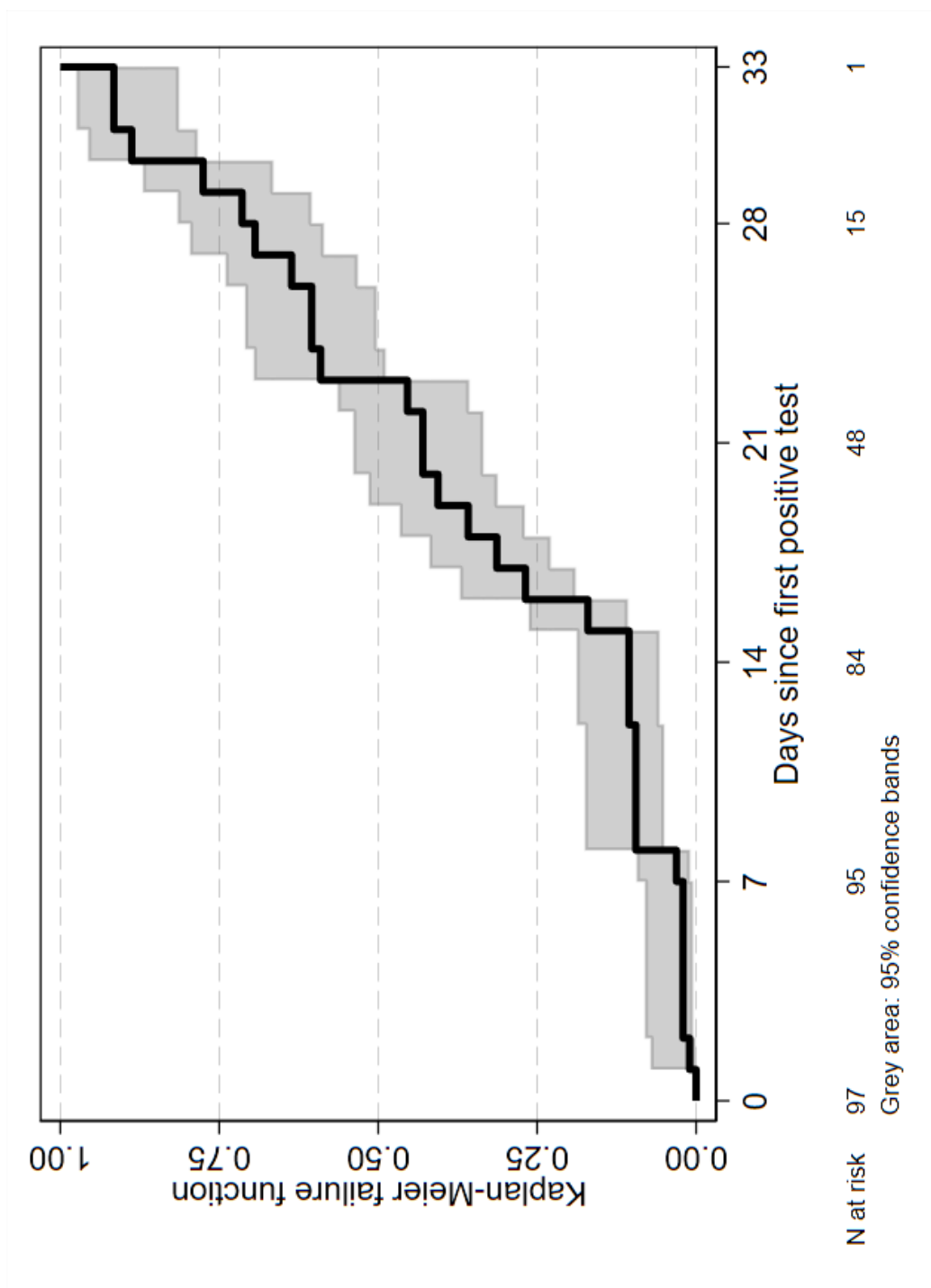
	Subjects	Positive test				
	N	N	%	p-value*	OR**	95% CI**
<b>Specific symptom</b>						
Cough						
No	1350	93	6.9	<0.001	1.00	Reference
Yes	223	45	20.2	..	1.32	0.80-2.16
Fever						
No	1382	74	5.4	<0.001	1.00	Reference
Yes	191	64	33.5	..	7.21	4.45-11.7
Sore throat						
No	1424	128	9.0	0.35	1.00	Reference
Yes	149	10	6.7	..	0.35	0.16-0.73
Coryza						
No	1465	115	7.8	<0.001	1.00	Reference
Yes	108	23	21.3	..	1.47	0.76-2.82
Headache						
No	1490	120	8.0	<0.001	1.00	Reference
Yes	83	18	21.7	..	0.69	0.34-1.39
Myalgias						
No	1517	122	8.0	<0.001	1.00	Reference
Yes	56	16	28.6	..	1.98	0.92-4.25
Diarrhoea/nausea/vomit						
No	1528	128	8.4	0.001	1.00	Reference
Yes	45	10	22.2	..	1.42	0.59-3.40
Asthenia						
No	1535	126	8.2	<0.001	1.00	Reference
Yes	38	12	31.6	..	2.03	0.87-4.75
Ocular symptoms						
No	1539	127	8.2	<0.001	1.00	Reference
Yes	34	11	32.3	..	2.77	1.07-7.18
Dyspnoea						
No	1548	131	8.5	0.001	1.00	Reference
Yes	25	7	28.0	..	2.07	0.74-5.79
Taste and smell alterations						
No	1551	122	7.9	<0.001	1.00	Reference
Yes	22	16	72.7	..	29.7	10.1-87.5

316  
 317 Abbreviations: CI, confidence interval; OR, odds ratio.  
 318 \*From chi-squared test.  
 319 \*\*From a multivariable logistic model including all symptoms.

320



321 **Figure 1.** Kaplan-Meier failure function showing times at which subjects became test-  
322 negatives.



323