

## **M2 monocyte polarization in dialyzed patients is associated with increased levels of M-CSF and myeloperoxidase-associated oxidative stress: preliminary results.**

Valérie Pireaux<sup>a</sup>, Cédric Delporte<sup>b</sup>, Alexandre Rousseau<sup>c</sup>, Jean-Marc Desmet<sup>d</sup>, Pierre Van Antwerpen<sup>b</sup>, Martine Raes<sup>a</sup>, Karim Zouaoui Boudjeltia<sup>c</sup>.

<sup>a</sup>URBC-Narilis, University of Namur, 61 rue de Bruxelles, Namur, Belgium.

<sup>b</sup>Laboratory of Pharmaceutical Chemistry and Analytical Platform of the Faculty of Pharmacy, Université Libre de Bruxelles (Campus de la Plaine) CP205/05, Boulevard du Triomphe, Brussels, Belgium.

<sup>c</sup>Laboratory of Experimental Medicine (ULB 222 Unit), Université Libre de Bruxelles, CHU-Charleroi, ISPPC Hôpital Vésale, Montigny-Le-Tilleul, Belgium.

<sup>d</sup>Nephrology-Hemodialysis Unit, CHU-Charleroi, ISPPC Hôpital Vésale, Montigny-Le-Tilleul, Belgium.

Valérie Pireaux

URBC-Narilis, University of Namur, 61 rue de Bruxelles, 5000 Namur, Belgium

[valerie.pireaux@unamur.be](mailto:valerie.pireaux@unamur.be)

Tel. : +32 81 72 41 29

Cédric Delporte

Laboratory of Pharmaceutical Chemistry and Analytical Platform of the Faculty of Pharmacy, ULB (Campus de la Plaine) CP205/05, Boulevard du Triomphe, Brussels, Belgium

[cedric.delporte@ulb.ac.be](mailto:cedric.delporte@ulb.ac.be)

Tel. : +32 26 50 52 77

NOTE: This preprint reports new research that has not been certified by peer review and should not be used to guide clinical practice.

Alexandre Rousseau

Laboratory of Experimental Medicine (ULB 222 Unit), Université Libre de Bruxelles,

CHU-Charleroi, ISPPC Hôpital Vésale, Montigny-Le-Tilleul, Belgium

[alexandre.rousseau@chu-charleroi.be](mailto:alexandre.rousseau@chu-charleroi.be)

Tel. : +32 81 92 47 17

Jean-Marc Desmet

Nephrology-Hemodialysis Unit, CHU-Charleroi, ISPPC Hôpital Vésale, Montigny-Le-

Tilleul, Belgium.

[jeanmarc.desmet@chu-charleroi.be](mailto:jeanmarc.desmet@chu-charleroi.be)

Tel. : +32 71 92 11 31

Pierre Van Antwerpen

Laboratory of Pharmaceutical Chemistry and Analytical Platform of the Faculty of

Pharmacy, Université Libre de Bruxelles (Campus de la Plaine) CP205/05, Boulevard du

Triomphe, Brussels, Belgium

[pierre.van.antwerpen@ulb.ac.be](mailto:pierre.van.antwerpen@ulb.ac.be)

Tel. : +32 26 50 52 63

Martine Raes

URBC-Narilis, University of Namur, 61 rue de Bruxelles, 5000 Namur, Belgium

[martine.raes@unamur.be](mailto:martine.raes@unamur.be)

Tel. : +32 81 72 41 24

Fax.: +32 81 72 41 35

Corresponding author:

Karim Zouaoui Boudjeltia

Laboratory of Experimental Medicine (ULB 222 Unit), Université Libre de Bruxelles,

CHU-Charleroi, ISPPC Hôpital Vésale, Montigny-Le-Tilleul, Belgium

[kzouaoui@ulb.ac.be](mailto:kzouaoui@ulb.ac.be)

Tel. : +32 71 92 47 05

Fax. : +32 71 92 47 10

Prof. Karim Zouaoui Boudjeltia and Prof. Martine Raes co-directed this work.

## Abstract

Cardiovascular diseases represent a major issue in terms of morbidity and mortality for dialysis patients. This morbidity is due to the accelerated atherosclerosis observed in these patients. Atherosclerosis is a chronic inflammatory disease characterized by key players such as monocytes, macrophages or oxidized LDLs. Monocytes-macrophages are classified into subsets of polarized cells, with M1 and M2 macrophages considered respectively as pro- and anti-inflammatory.

The monocyte subsets and phenotypes were analyzed by flow cytometry. These data was completed by the quantification of plasma M-CSF, IL-8, CRP, Mox-LDLs, Apo-B and Apo-AI, chloro-tyrosine and homocitrulline concentrations.

The statistical differences and associations between two continuous variables were assessed using the Mann-Whitney U test and Spearman's correlation coefficient, respectively.

Hemodialyzed patients showed a significant increase in the concentrations of CRP, M-CSF and IL-8 (inflammation biomarkers) as well as of chloro-tyrosine and homocitrulline (myeloperoxidase-associated oxidative stress biomarkers). Moreover we observed a higher percentage of M2 monocytes in the plasma of hemodialysis patients, as compared to the controls.

Our data suggests that an oxidative stress and an inflammatory environment, amplified in hemodialysis patients, seems to favor an increase in the concentration of circulating M-CSF, therefore leading to an increase of M2 polarization among circulating monocytes.

Keywords: dialysis; inflammation; monocytes; myeloperoxidase; oxidation; polarization.

Short summary:

Our data suggests that an oxidative stress and an inflammatory environment, amplified in hemodialysis patients, seems to favor an increase in the concentration of circulating M-CSF, associated with an increase of circulating M2 polarized monocytes.

## Introduction

Cardiovascular diseases (CVD) account for approximately 30 to 40 % of deaths among dialysis patients ([1], updated 9/19/2016). They represent a major issue in terms of morbidity and mortality for the latter, and specifically in the case of hemodialyzed (HD) patients showing a 5-year survival rate on stable HD (for a review, see [2]). The morbidity associated with CVD is due to accelerated atherosclerosis, that has been shown to be present in carotid arteries of HD patients as opposed to aged-matched healthy controls, with a higher thickness of media/intima, as well as with arterial stiffness and calcification within the plaques [3-6].

Atherosclerosis is a chronic inflammatory disease affecting mainly medium and large size arteries. Indeed, injuries or local blood flow perturbations lead to an increased permeability of the endothelial layer, favoring lipoprotein infiltration in the intima where they get oxidized and become atherogenic (for reviews, see [7-9]). This oxidation activates endothelial cells, enhancing chemokine and cytokine secretion and finally inducing the recruitment of monocytes that will differentiate into macrophages in the intima [8,9].

Monocytes-macrophages are important key players in the initiation and evolution of atherosclerotic lesions. They display high plasticity and heterogeneity and are activated by different signals varying according to the cellular environment, modulating their phenotypes as an adaptive response. The classification of monocytes and macrophages is based on the nomenclature of Th1/Th2 immune cells. *In vitro*, the M1 phenotype corresponding to “classically-activated macrophages” is obtained when they are exposed to IFN $\gamma$  combined with a TNF $\alpha$  inducer such as LPS or to GM-CSF [10-13]. M1

macrophages display pro-inflammatory properties and are mostly involved in acute host defense towards intracellular microorganisms, in tumor resistance and tissue destruction thanks to their capacity to produce bursts of reactive oxygen and nitrogen species and to secrete pro-inflammatory cytokines (eg. IL-6 and IL-8) [11,14]. On the opposite, anti-inflammatory M2 macrophages resolve inflammation by the production of anti-inflammatory mediators [14,15]. They take part in matrix remodeling, angiogenesis, tissue repair and healing but can also be immunosuppressive promoting tumor development [16,17]. This phenotype can be induced by M-CSF (macrophage-colony stimulating factor), by IL-4 and IL-13 (M2a), by immune complexes, TLR agonists or IL-1R (M2b) or by IL-10, as well as by glucocorticoid or secosteroid hormones (M2c) [10-12,18]. M2a macrophages are characterized by the expression of markers such as CD206, CD163 and dectin-1, M2b by the expression of IL-10, MHC-II and CD206 and M2c by the expression of CD163, CD206 and Tie-2 [13]. In this study, we decided to keep the M1/M2 classification, even though we are aware that it is mainly based on *in vitro* studies that do not adequately mirror the complexity of the cell environment *in vivo*.

In the literature, the polarization of macrophages has been much more documented over the last years in macrophages compared to monocytes. However the term of “polarization” has also been suggested to be of interest for circulating monocytes [19].

The cause of accelerated atherosclerosis in dialysis patients is not known yet, even though several major risk factors are well represented such as high blood pressure, higher concentrations of plasma lipids, inflammation (eg. elevated homocysteine, CRP

(C-reactive protein) or fibrinogen levels), oxidative stress, hyperinsulinemia, mineral metabolism disorders or anemia (for reviews, see [20,21]).

In this study, we investigated whether the polarization of circulating monocytes would be different in hemodialysis patients versus healthy volunteers and whether it could be correlated with the inflammatory status, assessed by quantifying inflammatory proteins (IL-8, CRP and M-CSF) in the plasma. Oxidative stress was also monitored by assessing homocitrulline (Hcit). Homocitrulline is a product of protein carbamylation, generated non enzymatically from lysine residues by the action of cyanate. Cyanate is itself derived from the spontaneous decomposition of urea or via the oxidation of thiocyanate by myeloperoxidase in the presence of H<sub>2</sub>O<sub>2</sub> [22]. Finally, to have a glance on the lipoprotein status, Apo-AI, Apo-B, but also myeloperoxidase-oxidized LDLs (Mox-LDLs) were quantified in dialysis patients versus healthy volunteers.



## Subjects and methods

### 2.1. Study participants

27 patients undergoing hemodialysis and 23 healthy volunteers were studied (see Table S1 in supplementary data). They were recruited at the Nephrology unit of the CHU-Charleroi, ISPPC Hôpital Vésale in Belgium. Subjects were aged between  $51 \pm 28$  years (healthy volunteers) and  $71 \pm 14$  years (hemodialyzed patients). Blood samples were collected just before dialysis.

A written informed consent was obtained from each patient and healthy donor included in the study. The protocol of the study was in conformity with the ethical guidelines of the Helsinki Declaration of 1975 (revised in 2000) and was approved by the Institution's ethics committee.

### 2.2. Flow cytometry

100  $\mu$ L of total blood from patients were incubated for 15 minutes at RT with PE mouse anti-human CD14 and V500 mouse anti-human CD16 antibodies (Becton Dickinson, Franklin Lakes, NJ, USA) as well as with mouse anti-human CD86-FITC and anti-human CCR2-APC monoclonal antibodies (Miltenyi Biotec, Bergisch Gladbach, Germany) for determining the M1 polarization or with mouse anti-human CD206-FITC, anti-human CXCR3-APC and anti-human CD163-VioBlue monoclonal antibodies (Miltenyi Biotec, Bergisch Gladbach, Germany) for the M2 polarization. Red blood cells were then eliminated by adding BD FACS Lysing Solution (dilution: 1/20) (Becton Dickinson, Franklin Lakes, NJ, USA) to total blood and remaining cells were washed twice with 1 mL of running buffer. Cells were finally resuspended in 300  $\mu$ L of running buffer for analysis. The matching isotype controls were used for each antibody in order to define the threshold. The analysis was performed using the MACSQuant Analyzer 10 (Miltenyi

Biotec, Bergisch Gladbach, Germany), applying a gating strategy based on the SSC vs PE gate (CD14), selecting the monocyte population. Classical monocytes were defined based on a high expression of CD14 and a low expression of CD16 (CD14<sup>+</sup>CD16<sup>-</sup>). Intermediate monocytes were defined based on a high expression of CD14 and CD16 (CD14<sup>+</sup>CD16<sup>+</sup>), while non-classical monocytes were characterized by a low expression of CD14 and a high expression of CD16 (CD14<sup>-</sup>CD16<sup>+</sup>).

### 2.3. Measurements of myeloperoxidase-modified LDLs, M-CSF and IL-8 (ELISA assays)

Antibodies used for the measurement of myeloperoxidase-modified LDLs (Mox-LDLs) were previously fully characterized [23]. They react with the ApoB-100 protein moiety and provide positive signals in human atherosclerotic lesions [23].

Human serum IL-8 and M-CSF ELISA assays were performed following manufacturer's instructions (IL-8: BD Biosciences, Franklin Lakes, NJ, USA; M-CSF: R & D Systems, Minneapolis, MN, USA).

### 2.4. Quantitative analysis of CRP, Apo-AI and Apo-B

Serum parameters such as hs-CRP, Apo-AI and Apo-B were evaluated by antibody-binding and turbidity measurement on SYNCHRON LX®.

### 2.5. Homocitrulline, lysine (Lys), chloro-tyrosine (Cl-Tyr) and tyrosine (Tyr)

quantification by LC-MS/MS

Protein-bound homocitrulline and chloro-tyrosine were monitored in plasma after acid hydrolysis as previously described [24]. Briefly, plasma (20 µL) was placed into the vial, 200 µL of acid mixture (6 M HCl supplemented with 0.05% (m/v) phenol) and internal standards were added. Hydrolysis was carried out for 35 min at 110°C. 13C9-Tyr and

$^{13}\text{C}^{15}\text{N}$ -Lys were used as internal standards. Samples were evaporated to dryness under nitrogen flow, labeled with a butanolic HCl solution, dried under nitrogen flow and finally dissolved in 1.0 mL formic acid 0.1 % in water before injection into the LC-MS system. The LC system was a 1290 Infinity series UHPLC system (Agilent Technologies, Palo Alto, USA). Amino acid residues were resolved on a Poroshell 120 EC-C18 column (2.1 × 100 mm, 2.7 μm) (Agilent Technologies, Palo Alto, CA, USA) using a gradient of 0.2 % formic acid and methanol. Amino acid residues were quantified by tandem MS on a 6490 series ESI-triple quadrupole mass spectrometer using a JetStream source (Agilent Technologies, Palo Alto, USA). Data was acquired using MassHunter Acquisition® software and analyzed by MassHunter Quantitative Analysis® software (Version B.07, Agilent Technologies). Data is expressed as ratio of homocitrulline to lysine and ratio of chloro-tyrosine to tyrosine.

## 2.6. Statistical analyses

Statistical analyses were performed using the SigmaPlot (version 12.5) software.

The Shapiro-Wilk test was used to assess normal distribution. Continuous non-normally distributed data was expressed as median and interquartile range. They were analyzed by Mann-Whitney U test. A correlation was checked using Spearman's  $r$  coefficient.

Differences were considered significant when  $p < 0.05$ .

## Results

### *Circulating anti-inflammatory and immunosuppressive monocytes are increased in HD patients*

At first, the monocyte phenotype and polarization were investigated in hemodialyzed patients (HD) versus non-HD donors. Based on the CD14 and CD16 expression, we observed a significant decrease in the percentage of classical CD14<sup>+</sup>CD16<sup>-</sup> monocytes in HD patients compared to healthy subjects (controls) ( $p < 0.05$ ), while the percentage of intermediate CD14<sup>+</sup>CD16<sup>+</sup> and non-classical CD14<sup>-</sup>CD16<sup>+</sup> monocytes was similar in the two groups (Fig. 1 A).

Then, assessing the expression of M1 (CD86 and CCR2) and M2 (CD206, CXCR3 and CD163) protein markers, we observed that, in comparison to the healthy subjects, HD patients showed an increased percentage of anti-inflammatory and immunosuppressive CD206<sup>+</sup>CXCR3<sup>+</sup>CD163<sup>+</sup> M2 monocytes ( $p < 0.01$ ), while the pro-inflammatory CD86<sup>+</sup>CCR2<sup>+</sup> M1 monocyte population did not seem to be modified ( $p > 0.05$ ) (Figs. 1 B and 1C). While analyzing the M1 or M2 predominance in the different monocyte subpopulations, we observed an increase in the M2 CD14<sup>+</sup>CD16<sup>+</sup> monocyte subpopulation ( $p < 0.001$ ), as well in the M2 CD14<sup>-</sup>CD16<sup>+</sup> monocytes ( $p < 0.05$ ), in HD patients, as opposed to the controls (Fig. 1 E). There was no significant difference in the M1 CD86<sup>+</sup>CCR2<sup>+</sup> monocyte subpopulations (Fig. 1 D).

### *Biomarkers of inflammation, including M-CSF, are increased in HD patients*

Because M-CSF is described as an inflammation biomarker, known to favor macrophage polarization, we decided to measure the blood concentration of M-CSF, but also of other recognized inflammation markers such as IL-8, as well as CRP, shown to induce M-CSF secretion by endothelial cells (Fig. 2).

As a result, we observed that the concentration of M-CSF was significantly higher in the blood of HD patients as compared to healthy individuals ( $p < 0.001$ ) (Fig. 2 A). These results are in agreement with the data of Nitta et al. (2001) and Nishida et al. (2016) [25,26]. We also observed that this increased concentration positively correlated with the increased percentage of M2 monocytes in HD patients ( $r = 0.48$ ;  $p < 0.0004$ ) (Fig. 3A). Plasma CRP as well as IL-8 concentration was also increased in HD patients in comparison with the controls (respectively  $p < 0.01$  and  $p < 0.001$ ) (Fig. 2 A).

#### *HD patients undergo myeloperoxidase-dependent oxidative stress*

Besides inflammatory proteins and M-CSF, we also measured the plasma concentration of myeloperoxidase (MPO)-oxidized LDLs (Mox-LDLs) and chloro-tyrosine (Cl-Tyr), a product of LDL oxidation by MPO (Fig. 2). The abundance of apolipoprotein-AI (constituent of High-Density Lipoproteins) and Apo-B (constituent of Low-Density Lipoproteins) was also assessed (Fig. 2).

Interestingly, an increase in the plasma concentration of Mox-LDLs (ratio of Mox-LDLs/Apo-B) was observed in hemodialysis patients, even though this trend was not significant ( $p = 0.11$ ). The concentration of chloro-tyrosine (Cl-Tyr) also increased in the plasma of HD patients, as compared to healthy controls ( $p < 0.001$ ) (Fig. 2 C). This increase positively correlated with the increase in the percentage of M2 monocytes ( $r = 0.43$ ;  $p = 0.001$ ) in HD patients and in healthy controls (Fig. 3 B). In addition, a significant decrease in the Apo-AI concentration, the major apolipoprotein of high-density lipoprotein, was observed in the blood of HD patients, as opposed to the controls ( $p = 0.002$ ) (Fig. 2 B).

Finally, the concentration of homocitrulline was quantified. Homocitrulline is a product of protein carbamylation, that accumulates after oxidation of thiocyanate by

myeloperoxidase in the presence of H<sub>2</sub>O<sub>2</sub> [22]. An increase in protein carbamylation has been observed in inflammatory diseases such as atherosclerosis [22]. The plasma concentration of homocitrulline (Hcit) increased in HD patients, as compared to the controls (Fig. 2 C).

## Discussion

Our data suggest that an oxidative stress and an inflammatory environment, amplified in hemodialysis (HD) patients, seems to favor an increase in the concentration of circulating M-CSF, associated with an increase in M2 polarization among monocytes in bloodstream.

Accelerated atherosclerosis is a major problem in terms of morbidity for HD patients. Monocytes and macrophages are key cells in the pathophysiology of atherosclerosis. Indeed, they contribute to the lesion development after infiltration of the monocytes into the intima and their differentiation into macrophages. Besides producing inflammatory mediators contributing to the evolution of the lesion, macrophages also accumulate modified LDLs and become foam cells, a hallmark of atherosclerotic lesions [9].

In this study, we decided to investigate the monocytes in the blood of HD patients, taking into account their polarization. Unexpectedly we observed an increase in the percentage of circulating M2 monocytes.

Therefore we wondered why the percentage of circulating M2 monocytes increased in hemodialysis patients. M-CSF, a hematopoietic growth factor, considered as a potent cytokine, is a keyplayer in monocyte differentiation into macrophages, regulating monocyte and macrophage survival, proliferation and activation [10,27]. In agreement with other studies [25,28], we showed that M-CSF concentration was higher in the plasma of HD patients, in comparison to healthy individuals.

M-CSF level in the circulation increases in various pathologies such as cancer, infections and chronic inflammatory diseases [29-31]. It is produced by arterial wall cells such as endothelial cells and fibroblasts, as well as by macrophages in atherosclerotic lesions

[32-34]. Several studies in mice and humans have linked M-CSF to chronic inflammatory diseases such as atherosclerosis and concluded that M-CSF would have a pro-atherogenic role [35,36]. Indeed M-CSF has been detected within atherosclerotic lesions where it is overexpressed as compared to healthy artery tissues [33]. Furthermore, Smith et al. showed that the size of lesions of hyperlipidemic *ApoE*<sup>-/-</sup> mice, deficient in M-CSF, is reduced [37].

Devaraj et al. showed that CRP, a pro-inflammatory protein, induces the production of M-CSF by endothelial cells and macrophages [38]. We showed here that CRP concentration indeed increased in the plasma of HD patients.

We also quantified the level of plasma IL-8 to further confirm the pro-inflammatory status: the plasma concentration of this protein was also increased in HD patients in comparison with healthy volunteers.

Several teams showed that oxidized LDLs induce IL-8 secretion in cultured endothelial cells [39] and in vascular smooth muscle cells [40]. Others recently identified CRP in the supernatants of human aortic endothelial cells stimulated with Ox-LDLs [41]. Besides IL-8, elevated levels of CRP and oxidized LDLs were found to positively correlate with cardiovascular diseases (for a review, see [42]). Mox-LDLs were also shown to trigger IL-8 secretion in endothelial cells [43]. Mox-LDLs are the result of LDL oxidation by myeloperoxidase, a cationic enzyme considered as one of the physiologically relevant oxidative systems of LDLs. In this work, we observed that the serum Mox-LDLs raised in HD patients at the limit of the significance while chloro-tyrosines detected on plasmatic proteins significantly increased. These modifications due to MPO activity are also detected in atherosclerotic lesions [23,44]. We also observed a higher level of plasma homocitrulline in HD patients, in comparison to the controls. As already mentioned,



homocitrulline is a product of protein carbamylation, considered, at least in part, as a biomarker of MPO activity in the presence of H<sub>2</sub>O<sub>2</sub> [22]. An increase in protein carbamylation has been observed in inflammatory diseases such as atherosclerosis (for a review, see [22]). Carbamylated proteins are indeed important in the atherosclerosis process, as it has been shown that carbamylated LDLs induce monocyte adhesion to vascular endothelial cells [45]. Moreover, carbamylated HDLs have been shown to contribute to foam cell formation [46]. Patients suffering from renal failure with uremia also displayed an increase in protein carbamylation, along with an increase in homocitrulline concentration [47]. This is consistent with our data, showing an increased concentration of plasma homocitrulline in HD patients. Taken all together, our data suggests a MPO-dependent oxidative stress in HD patients.

Therefore it is possible that Mox-LDLs and chloro-tyrosine on plasma proteins, more abundant in HD patients, induce the production of IL-8 and CRP, leading to their increase in the plasma and then to an increase in plasma M-CSF concentration. Pireaux et al. showed *in vitro* that Mox-LDLs enhance a M2 phenotype in murine macrophages [48]. Thus the increased concentrations of Mox-LDLs, and chloro-tyrosine on plasma proteins and M-CSF could explain the increased percentage of M2 monocytes observed in HD patients in our study. Further analyses are needed in order to validate this hypothesis.

In the context of renal pathology, studies showed that the percentage of M2 monocytes is also modified in the renal stroma of patients. However the recruitment and the role of CD163+ M2 macrophages in the dysfunctional kidney is not understood yet. There is evidence that they could be involved in the disease progression, with studies showing an

association between increased CD163+ M2 macrophages infiltration and decreased renal function. Other studies showed that CD163+ M2 macrophages are associated with renal dysfunction as it progresses from the acute inflammatory to chronic fibrotic phase as the M2/M1 macrophages ratio increased [49,50]. However Lu et al. (2013) proposed a role in tissue repair, restoration of tissue integrity and improvement of renal function by showing that CD163+ M2a and M2c macrophages were protective against renal inflammation and renal injury in chronic kidney disease [51].

Thus it remains unclear whether CD163+ M2 macrophages are primary actors of disease progression or are recruited in order to limit as much as possible inflammation induced tissue damage.

Considering that HD patients suffer from accelerated atherosclerosis, we were surprised to observe an increase in the circulating M2 monocytes. Indeed, M2 polarization among macrophages is usually considered as protective in atherosclerosis. M2 macrophages have been predominantly detected in early lesions of *ApoE*<sup>-/-</sup> mouse lesions [52], but also in regressing plaques [53] or in the human perivascular adventitial tissue [54]. But M2 monocytes-macrophages are heterogeneous and can be considered as anti- or pro-atherogenic, depending on the stimuli and on the proteins they express. The increase in M2 monocytes in HD patients, characterized by accelerated atherosclerosis, could then be explained by two hypotheses. First, the M2 polarization is pro-atherogenic, as it has been hypothesized for IL-4-induced M2 macrophages [55]. Indeed it has been shown that IL-4 induces the expression of the scavenger receptor CD36 in macrophages, promoting oxidized LDL uptake. IL-4 also upregulates the expression of matrix metalloproteinases, involved in the matrix degradation and plaque instability [55]. It is thus possible that, in our study, the increased percentage of M2 monocytes would

contribute to the progression of the lesions. Second, the M2 polarization is anti-atherogenic, thanks to the M2 monocyte-macrophage anti-inflammatory actions and their role in apoptotic cell efferocytosis. Studies like the one of Sharma et al. showed that M2 macrophages can be protective against atherogenesis at least in mice. They observed that *ApoE*<sup>-/-</sup> mice deficient in *Klf4*, a transcription factor responsible for M2 polarization, develop more inflammation and atherosclerotic lesions than *ApoE*<sup>-/-</sup> mice [56]. Hence in our study, the percentage of M2 monocytes would increase as an attempt to limit the development of the progressing atherosclerotic lesions.

In conclusion, these results suggest that the oxidative stress and inflammation, amplified in HD patients, induce the production of M-CSF, itself responsible for enhancing the M2 polarization.

Further analyses are required in order to assess whether these circulating M2 monocytes favor renal dysfunction and accelerated atherogenesis in hemodialysis patients or whether they represent an attempt to limit renal tissue damage and atherogenesis, but that at the end fails, probably due to the frequency of the dialyses.

### Conflict of interests

The authors declare that there is no conflict of interests regarding the publication of this paper.

Data are available.

### Financial support

VP was supported by the FRIA (Brussels, Belgium) and the UNamur. This study was in part supported by the scientific commission of CHU-Charleroi. The Analytical Platform of the Faculty of Pharmacy, with the ESI-triple quadrupole mass spectrometer (PVA) was supported by the FNRS.

## References

- [1] USRDS. 2015 United States Renal Data System annual data report. <https://www.usrds.org/2015/view/Default.aspx>.
- [2] Walter R, Mischak H, Haller H. Haemodialysis, atherosclerosis and inflammation-identifying molecular mechanisms of chronic vascular disease in ESDR patients. *Nephrol Dial Transplant* 2002;17 Suppl 3:24-9.
- [3] Kawagishi T, Nishizawa Y, Konishi T, Kawasaki K, Emoto M, Shoji T, Tabata T, Inoue T, Morii H. High-resolution B-mode ultrasonography in evaluation of atherosclerosis in uremia. *Kidney Int* 1995;48(3):820-6.
- [4] Goodman WG, Goldin J, Kuizon BD, Yoon C, Gales B, Sider D, Wang Y, Chung J, Emerick A, Greaser L and others. Coronary-artery calcification in young adults with end-stage renal disease who are undergoing dialysis. *N Engl J Med* 2000;342(20):1478-83.
- [5] Savage T, Clarke AL, Giles M, Tomson CR, Raine AE. Calcified plaque is common in the carotid and femoral arteries of dialysis patients without clinical vascular disease. *Nephrol Dial Transplant* 1998;13(8):2004-12.
- [6] Stenvinkel P, Heimbürger O, Paultre F, Diczfalusy U, Wang T, Berglund L, Jogestrand T. Strong association between malnutrition, inflammation, and atherosclerosis in chronic renal failure. *Kidney Int* 1999;55(5):1899-911.
- [7] Lusis AJ. Atherosclerosis. *Nature* 2000;407(6801):233-41.
- [8] Woollard KJ, Geissmann F. Monocytes in atherosclerosis: subsets and functions. *Nat Rev Cardiol* 2010;7(2):77-86.
- [9] Tabas I, Garcia-Cardena G, Owens GK. Recent insights into the cellular biology of atherosclerosis. *J Cell Biol* 2015;209(1):13-22.
- [10] Fleetwood AJ, Dinh H, Cook AD, Hertzog PJ, Hamilton JA. GM-CSF- and M-CSF-dependent macrophage phenotypes display differential dependence on type I interferon signaling. *J Leukoc Biol* 2009;86(2):411-21.
- [11] Mantovani A, Sica A, Sozzani S, Allavena P, Vecchi A, Locati M. The chemokine system in diverse forms of macrophage activation and polarization. *Trends Immunol* 2004;25(12):677-86.
- [12] Labonte AC, Tosello-Trampont AC, Hahn YS. The role of macrophage polarization in infectious and inflammatory diseases. *Mol Cells* 2014;37(4):275-85.
- [13] Liberale L, Dallegri F, Montecucco F, Carbone F. Pathophysiological relevance of macrophage subsets in atherogenesis. *Thromb Haemost* 2017;117(1):7-18.
- [14] Sica A, Mantovani A. Macrophage plasticity and polarization: in vivo veritas. *J Clin Invest* 2012;122(3):787-95.

- [15] Wolfs IM, Donners MM, de Winther MP. Differentiation factors and cytokines in the atherosclerotic plaque micro-environment as a trigger for macrophage polarisation. *Thromb Haemost* 2011;106(5):1-9.
- [16] Liu YC, Zou XB, Chai YF, Yao YM. Macrophage polarization in inflammatory diseases. *Int J Biol Sci* 2014;10(5):520-9.
- [17] Biswas SK, Chittechath M, Shalova IN, Lim JY. Macrophage polarization and plasticity in health and disease. *Immunol Res* 2012;53(1-3):11-24.
- [18] Gordon S, Martinez FO. Alternative activation of macrophages: mechanism and functions. *Immunity* 2010;32(5):593-604.
- [19] Gordon S, Taylor PR. Monocyte and macrophage heterogeneity. *Nat Rev Immunol* 2005;5(12):953-64.
- [20] Harmankaya O, Akalin N, Akay H, Okuturlar Y, Erturk K, Kaptanogullari H, Kocoglu H. Comparison of risk factors for cardiovascular disease in hemodialysis and peritoneal dialysis patients. *Clinics (Sao Paulo)* 2015;70(9):601-5.
- [21] Garcia-Lopez E, Carrero JJ, Suliman ME, Lindholm B, Stenvinkel P. Risk factors for cardiovascular disease in patients undergoing peritoneal dialysis. *Perit Dial Int* 2007;27 Suppl 2:S205-9.
- [22] Turunen S, Koivula M-K, Nicholas A, Risteli L, Risteli J. Homocitrulline: an analog and confounder related to citrulline. In: Nicholas A, Bhattacharya S, editors. *Protein deimination in human health and disease: Springer Science + Business Media LLC; 2014. p 367-376.*
- [23] Moguilevsky N, Zouaoui Boudjeltia K, Babar S, Delree P, Legssyer I, Carpentier Y, Vanhaeverbeek M, Ducobu J. Monoclonal antibodies against LDL progressively oxidized by myeloperoxidase react with ApoB-100 protein moiety and human atherosclerotic lesions. *Biochem Biophys Res Commun* 2004;323(4):1223-8.
- [24] Delporte C, Franck T, Noyon C, Dufour D, Rousseau A, Madhoun P, Desmet JM, Serteyn D, Raes M, Nortier J and others. Simultaneous measurement of protein-bound 3-chlorotyrosine and homocitrulline by LC-MS/MS after hydrolysis assisted by microwave: application to the study of myeloperoxidase activity during hemodialysis. *Talanta* 2012;99:603-9.
- [25] Nishida M, Ando M, Iwamoto Y, Tsuchiya K, Nitta K. New Insight into Atherosclerosis in Hemodialysis Patients: Overexpression of Scavenger Receptor and Macrophage Colony-Stimulating Factor Genes. *Nephron Extra* 2016;6(2):22-30.
- [26] Nitta K, Akiba T, Kawashima A, Kimata N, Miwa N, Uchida K, Honda K, Takei T, Otsubo S, Yumura W and others. Serum levels of macrophage colony-stimulating factor and aortic calcification in hemodialysis patients. *Am J Nephrol* 2001;21(6):465-70.

- [27] Mia S, Warnecke A, Zhang XM, Malmstrom V, Harris RA. An optimized protocol for human M2 macrophages using M-CSF and IL-4/IL-10/TGF-beta yields a dominant immunosuppressive phenotype. *Scand J Immunol* 2014;79(5):305-14.
- [28] Ito A, Shimokawa H, Meno H, Inou T. Possible involvement of macrophage-colony stimulating factor in the pathogenesis of cardiac dysfunction in hemodialysis patients. *Jpn Heart J* 2004;45(3):497-503.
- [29] Chitu V, Stanley ER. Colony-stimulating factor-1 in immunity and inflammation. *Curr Opin Immunol* 2006;18(1):39-48.
- [30] Hamilton JA. Colony-stimulating factors in inflammation and autoimmunity. *Nat Rev Immunol* 2008;8(7):533-44.
- [31] Hume DA, MacDonald KP. Therapeutic applications of macrophage colony-stimulating factor-1 (CSF-1) and antagonists of CSF-1 receptor (CSF-1R) signaling. *Blood* 2012;119(8):1810-20.
- [32] Kihara T, Miyata Y, Furukawa M, Noguchi M, Nishikido M, Koga S, Kanetake H. Predictive value of serum macrophage colony-stimulating factor for development of aortic calcification in haemodialysis patients: a 6 year longitudinal study. *Nephrol Dial Transplant* 2005;20(8):1647-52.
- [33] Clinton SK, Underwood R, Hayes L, Sherman ML, Kufe DW, Libby P. Macrophage colony-stimulating factor gene expression in vascular cells and in experimental and human atherosclerosis. *Am J Pathol* 1992;140(2):301-16.
- [34] Shyy YJ, Wickham LL, Hagan JP, Hsieh HJ, Hu YL, Telian SH, Valente AJ, Sung KL, Chien S. Human monocyte colony-stimulating factor stimulates the gene expression of monocyte chemoattractant protein-1 and increases the adhesion of monocytes to endothelial monolayers. *J Clin Invest* 1993;92(4):1745-51.
- [35] Irvine KM, Andrews MR, Fernandez-Rojo MA, Schroder K, Burns CJ, Su S, Wilks AF, Parton RG, Hume DA, Sweet MJ. Colony-stimulating factor-1 (CSF-1) delivers a proatherogenic signal to human macrophages. *J Leukoc Biol* 2009;85(2):278-88.
- [36] Zhao B, Li Y, Buono C, Waldo SW, Jones NL, Mori M, Kruth HS. Constitutive receptor-independent low density lipoprotein uptake and cholesterol accumulation by macrophages differentiated from human monocytes with macrophage-colony-stimulating factor (M-CSF). *J Biol Chem* 2006;281(23):15757-62.
- [37] Smith JD, Trogan E, Ginsberg M, Grigaux C, Tian J, Miyata M. Decreased atherosclerosis in mice deficient in both macrophage colony-stimulating factor (op) and apolipoprotein E. *Proc Natl Acad Sci U S A* 1995;92(18):8264-8.
- [38] Devaraj S, Yun JM, Duncan-Staley C, Jialal I. C-reactive protein induces M-CSF release and macrophage proliferation. *J Leukoc Biol* 2009;85(2):262-7.
- [39] Dje N'Guessan P, Riediger F, Vardarova K, Scharf S, Eitel J, Opitz B, Slevogt H, Weichert W, Hocke AC, Schmeck B and others. Statins control oxidized LDL-

- mediated histone modifications and gene expression in cultured human endothelial cells. *Arterioscler Thromb Vasc Biol* 2009;29(3):380-6.
- [40] Ryoo SW, Kim DU, Won M, Chung KS, Jang YJ, Oh GT, Park SK, Maeng PJ, Yoo HS, Hoe KL. Native LDL induces interleukin-8 expression via H2O2, p38 Kinase, and activator protein-1 in human aortic smooth muscle cells. *Cardiovasc Res* 2004;62(1):185-93.
- [41] Tsai MH, Chang CL, Yu YS, Lin TY, Chong CP, Lin YS, Su MY, Yang JY, Shu TY, Lu X and others. Chemical analysis of C-reactive protein synthesized by human aortic endothelial cells under oxidative stress. *Anal Chem* 2012;84(21):9646-54.
- [42] Obradovic MM, Trpkovic A, Bajic V, Soskic S, Jovanovic A, Stanimirovic J, Panic M, Isenovic ER. Interrelatedness between C-reactive protein and oxidized low-density lipoprotein. *Clin Chem Lab Med* 2015;53(1):29-34.
- [43] Boudjeltia KZ, Legssyer I, Van Antwerpen P, Kisoka RL, Babar S, Moguelevsky N, Delree P, Ducobu J, Remacle C, Vanhaeverbeek M and others. Triggering of inflammatory response by myeloperoxidase-oxidized LDL. *Biochem. Cell Biol* 2006;84:805-812.
- [44] Hazen SL, Heinecke JW. 3-Chlorotyrosine, a specific marker of myeloperoxidase-catalyzed oxidation, is markedly elevated in low density lipoprotein isolated from human atherosclerotic intima. *J Clin Invest* 1997;99(9):2075-81.
- [45] Apostolov EO, Shah SV, Ok E, Basnakian AG. Carbamylated low-density lipoprotein induces monocyte adhesion to endothelial cells through intercellular adhesion molecule-1 and vascular cell adhesion molecule-1. *Arterioscler Thromb Vasc Biol* 2007;27(4):826-32.
- [46] Holzer M, Gauster M, Pfeifer T, Wadsack C, Fauler G, Stiegler P, Koefeler H, Beubler E, Schuligoi R, Heinemann A and others. Protein carbamylation renders high-density lipoprotein dysfunctional. *Antioxid Redox Signal* 2011;14(12):2337-46.
- [47] Desmons A, Jaisson S, Pietrement C, Rieu P, Wynckel A, Gillery P. Homocitrulline: a new marker for differentiating acute from chronic renal failure. *Clin Chem Lab Med* 2016;54(1):73-9.
- [48] Pireaux V, Sauvage A, Bihin B, Van Steenbrugge M, Rousseau A, Van Antwerpen P, Zouaoui Boudjeltia K, Raes M. Myeloperoxidase-oxidized LDLs enhance an antiinflammatory M2 and antioxidant phenotype in murine macrophages. *Mediators Inflamm* 2016;2016:20.
- [49] Olmes G, Buttner-Herold M, Ferrazzi F, Distel L, Amann K, Daniel C. CD163+ M2c-like macrophages predominate in renal biopsies from patients with lupus nephritis. *Arthritis Res Ther* 2016;18:90.
- [50] Han Y, Ma FY, Tesch GH, Manthey CL, Nikolic-Paterson DJ. Role of macrophages in the fibrotic phase of rat crescentic glomerulonephritis. *Am J Physiol Renal Physiol* 2013;304(8):F1043-53.



- [51] Lu J, Cao Q, Zheng D, Sun Y, Wang C, Yu X, Wang Y, Lee VW, Zheng G, Tan TK and others. Discrete functions of M2a and M2c macrophage subsets determine their relative efficacy in treating chronic kidney disease. *Kidney Int* 2013;84(4):745-55.
- [52] Khallou-Laschet J, Varthaman A, Fornasa G, Compain C, Gaston AT, Clement M, Dussiot M, Levillain O, Graff-Dubois S, Nicoletti A and others. Macrophage plasticity in experimental atherosclerosis. *PLoS One* 2010;5(1):e8852.
- [53] Feig JE, Parathath S, Rong JX, Mick SL, Vengrenyuk Y, Grauer L, Young SG, Fisher EA. Reversal of hyperlipidemia with a genetic switch favorably affects the content and inflammatory state of macrophages in atherosclerotic plaques. *Circulation* 2011;123(9):989-98.
- [54] Stoger JL, Gijbels MJ, van der Velden S, Manca M, van der Loos CM, Biessen EA, Daemen MJ, Lutgens E, de Winther MP. Distribution of macrophage polarization markers in human atherosclerosis. *Atherosclerosis* 2012;225(2):461-8.
- [55] Pello OM, Silvestre C, De Pizzol M, Andres V. A glimpse on the phenomenon of macrophage polarization during atherosclerosis. *Immunobiology* 2011;216(11):1172-6.
- [56] Sharma N, Lu Y, Zhou G, Liao X, Kapil P, Anand P, Mahabeleshwar GH, Stamler JS, Jain MK. Myeloid Kruppel-like factor 4 deficiency augments atherogenesis in ApoE<sup>-/-</sup> mice--brief report. *Arterioscler Thromb Vasc Biol* 2012;32(12):2836-8.

## Figure legends

### **Figure 1. Effects of hemodialysis on monocyte phenotype and polarization.**

M1 and M2 monocytes in the blood of HD patients (n = 27) and healthy subjects (n = 23) were analyzed by flow cytometry. (A) Quantification of classical, intermediate and non-classical monocytes. Quantification of M1 monocytes assessed by the positive expression of CD86 and CCR2 (B) and of M2 monocytes assessed by the positive expression of CD206, CXCR3 and CD163 (C). Quantification of M1 (D) and M2 (E) monocytes in classical, intermediate and non-classical monocyte subsets.

\*  $p < 0.05$ ; \*\*  $p < 0.01$ ; \*\*\*  $p < 0.001$ .

### **Figure 2. Comparison of the presence of inflammatory factors as well as of myeloperoxidase-oxidized LDLs and their oxidation products, in hemodialyzed patients and in controls.**

(A) Quantification of the concentration of M-CSF (pg/ml), IL-8 (pg/ml) and CRP (mg/L) in the plasma of HD patients (n = 27) and healthy volunteers (n = 23). (B) Quantification of the plasma concentration of Mox-LDLs (ratio of Mox-LDLs/Apo-B), Apo-B (g/l), Apo-AI (g/l) and chloro-tyrosine (ratio of chloro-tyrosine/tyrosine) in HD patients and in healthy subjects. (C) Quantification of the plasma concentration of homocitrulline (ratio of homocitrulline/lysine).

\*\*  $p < 0.01$ ; \*\*\*  $p < 0.001$ .

### **Figure 3. Correlations between the percentage of M2 monocytes, plasma inflammatory and oxidative stress biomarkers, in hemodialyzed patients and in controls.**

Correlation between the percentage of circulating M2 monocytes and the plasma concentration of M-CSF (A), and between the percentage of circulating M2 monocytes and the plasma concentration of Cl-Tyr/Tyr (B), in HD patients (n = 27) and in healthy subjects (n = 23).

Figure 1

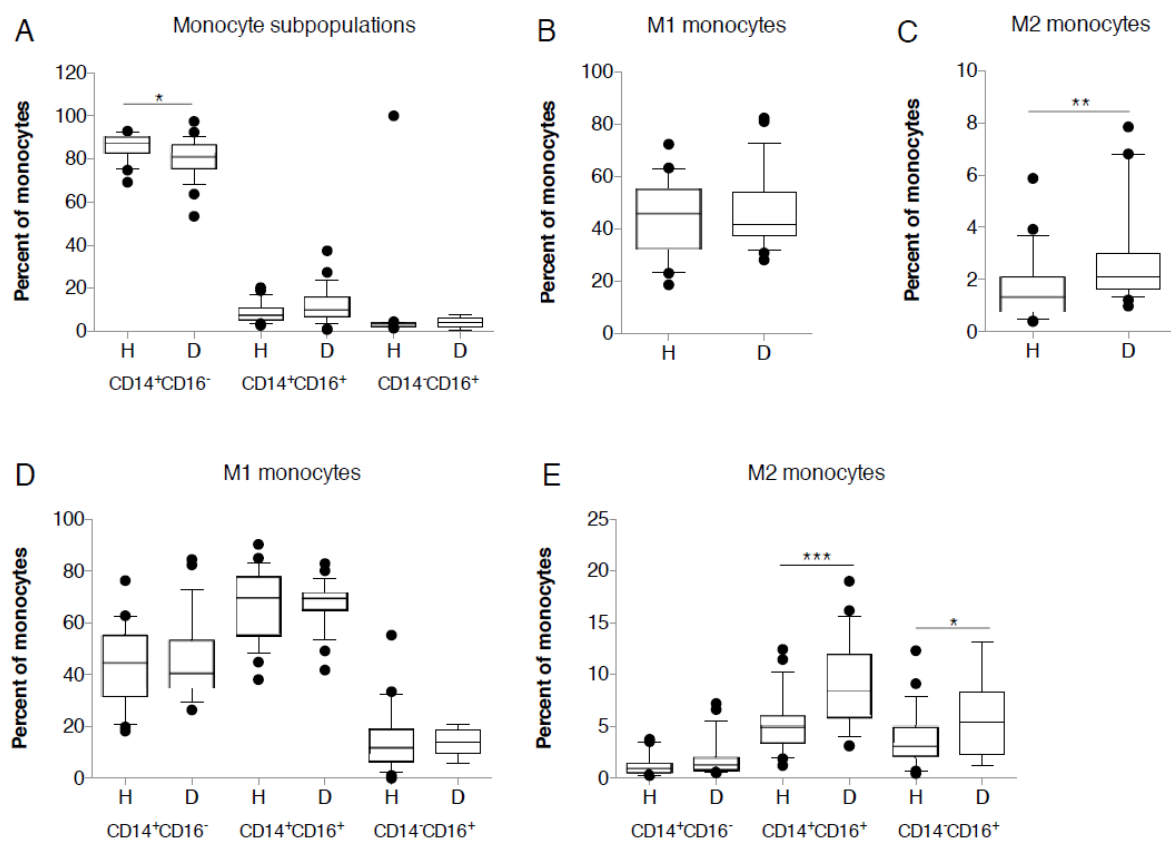
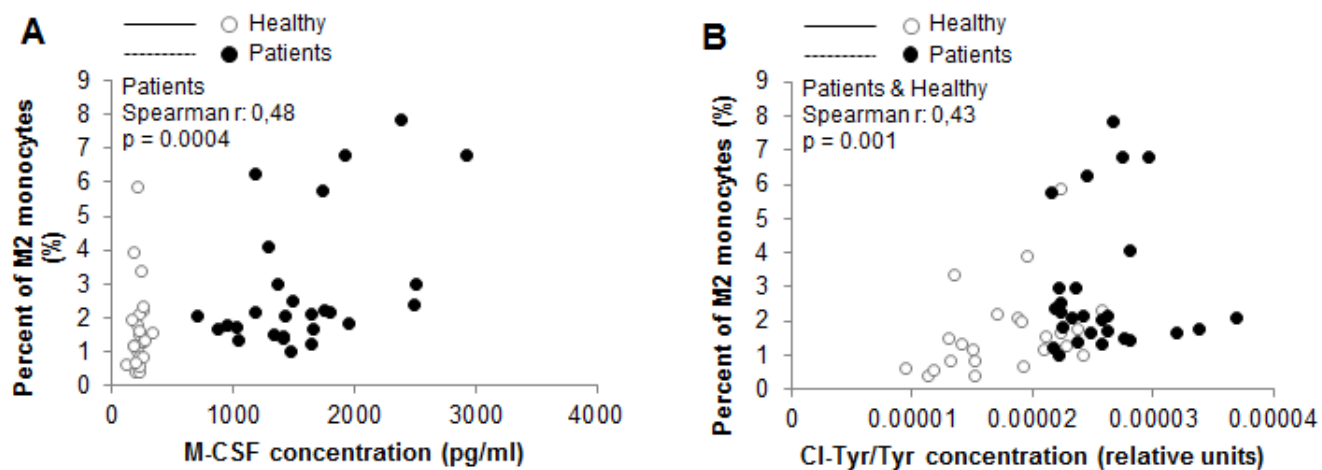




Figure 3



## Supplementary data

Patient Number	Gender	Age (y)	HD Time/week	Dialyzer	Access	Smoking Status	Diabetes
P1	M	83	12h	HF22	Hemocath	No	Yes
P2	M	64	10h30	HF22	Hemocath	Yes	Yes
P3	M	64	10h30	FX80	Hemocath	Yes	No
P4	M	29	12h	HF22	Hemocath	No	No
P5	M	88	9h	EVO	Hemocath	No	No
P6	F	88	9h	FX80	FAV	No	No
P7	F	68	9h	HF17	Hemocath	No	No
P8	F	88	10h30	Nephral 500	Hemocath	No	Yes
P9	M	61	12h	FX80	Hemocath	Yes	Yes
P10	M	62	12h	HF22	FAV	No	No
P11	M	59	12h	Nephral 500	Hemocath	Yes	Yes
P12	F	81	12h	HF17	Hemocath	No	No
P13	F	94	9h	HF17	Hemocath	No	Yes
P14	F	87	6h	HF22	Hemocath	No	No
P15	M	50	12h	HF22	Hemocath	No	No
P16	M	74	10h30	HF22	FAV	No	No
P17	M	59	16h	HF22	Hemocath	Yes	Yes
P18	F	77	9h	HF22	Hemocath	No	Yes
P19	M	71	9h	EVO	Hemocath	No	No
P20	F	70	12h	HF22	Hemocath	No	Yes
P21	M	79	10h30	HF22	FAV	No	No
P22	M	63	10h30	HF22	FAV	No	No
P23	F	88	12h	Nephral 500	Hemocath	No	Yes
P24	M	69	12h	HF22	Hemocath	No	Yes
P25	M	80	10h30	HF17	Hemocath	No	No
P26	M	72	12h	Nephral 500	Hemocath	No	Yes
P27	F	71	12h	FX80	Hemocath	No	No

**Table S1. Summary of patient data.**

HF22 (polyphenylene): high flux; FX80 (polysulfone): high flux; Nephral 500 (AN69ST):

high flux; Hemocath: long-term tunneled catheter; FAV: arterio-venous graft.