

COVID- 19 Infection in Children: Estimating Pediatric Morbidity and Mortality

Michelle Barton MD^a, Kayur Mehta MD^a, Kriti Kumar MD^a, Jielin Lu BSc^b, Nicole Le Saux MD^c, Margaret Sampson MLIS, PhD^d, Joan Robinson MD^e

Affiliations: ^aDepartment of Paediatrics, London Health Sciences Centre, London, Ontario

^bSchulich School of Medicine, University of Western Ontario, London, Ontario

^cDivision of Infectious Diseases, Children's Hospital of Eastern Ontario, Ottawa, Ontario

^dLibrary Services, Children's Hospital of Eastern Ontario, Ottawa, Ontario

^eStollery Children's Hospital, University of Alberta, Edmonton, Alberta

Address correspondence to: Joan Robinson; Email: jr3@ualberta.ca; Phone: 780-492-8038; FAX: 1-888-790-1176

Short title: Burden of COVID-19 in children

Funding Source: No external funding for this manuscript.

Financial Disclosure: None of the authors has a relevant financial disclosure.

Conflict of Interest: None of the authors has a potential conflict of interest to disclose

Contributor's Statement

Dr Barton helped to write the protocol, extracted data from the website and articles, wrote the first draft of the manuscript, and revised the manuscript.

Drs Mehta and Kumar and Ms Lu screened articles and extracted data from articles and websites.

Dr Sampson helped develop the protocol, devised and conducted the literature search and revised the manuscript.

Drs Robinson and Le Saux helped to write the protocol, screened articles, extracted data from articles and revised the manuscript.

All authors approved the final manuscript as submitted and agree to be accountable for all aspects of the work.

ABSTRACT

BACKGROUND: Estimates of pediatric morbidity and mortality from COVID-19 are vital for planning optimal use of human and material resources throughout this pandemic.

METHODS: Government websites from countries with minimum 1000 cases in adults and children on April 13, 2020 were searched to find the number of cases confirmed in children, the age range, and the number leading to hospitalization, intensive care unit (ICU) admission or death. A systematic literature search was performed April 13, 2020 to find additional data from cases series.

RESULTS: Data on pediatric cases were available from government websites for 23 of the 70 countries with minimum 1000 cases by April 13, 2020. Of 424 978 cases in these 23 countries, 8113 (1.9%) occurred in children. Nine publications provided data from 4251 cases in 4 additional countries. Combining data from the websites and the publications, 330 of 2361 cases required admission (14%). The ICU admission rate was 2.2 % of confirmed cases (44 of 2031) and 7.2% of admitted children (23 of 318). Death was reported for 15 cases.

CONCLUSION: Children accounted for 1.9% of confirmed cases. The true incidence of pediatric infection and disease will only be known once testing is expanded to individuals with less severe or no symptoms. Admission rates vary from 0.3 to 10% of confirmed cases (presumably varying with the threshold for testing) with about 7% of admitted children requiring ICU care. Death is rare in middle and high income countries.

Background

The 2019 Coronavirus disease (COVID-19) caused by the SARS-2 coronavirus came to world attention at the end of 2019 and was declared a pandemic by the WHO on March 11, 2020. The disease causes significant morbidity in adults where mortality rates are approximately 1 to 3%, although this figure is now approaching 8% in Italy.¹⁻³ The case fatality rate appears to be heavily influenced by age and underlying medical conditions. Because almost all reported deaths are in adults, they have been the focus of preparedness for this pandemic. Describing the epidemiology of COVID-19 in children by providing preliminary data from countries with a significant number of cases will support predictions of the resources needed to adequately care for children and potentially allow redeployment of resources to other sectors if appropriate.

The objective of this paper was to estimate the current burden of COVID-19 infection in children, specifically the relative proportion of confirmed cases that occur in children, the need for hospital admission and the incidence of deaths in countries with significant COVID-19 activity, recognizing that this data will change over time.

Methods

Two parallel searches were employed to address the study objectives.

Web-based search: Countries with > 1000 confirmed COVID cases in adults and children as reported April 13 2020 on the WHO website were identified.⁴ The World Bank country income classification was used to assign an income status to each of these countries.⁵

Data from these countries were included in the study if a government website provided data on pediatric case numbers or deaths. Any available data on the age range of infected

children, the number of pediatric hospitalizations, intensive care unit (ICU) admissions or deaths were recorded from included countries.

Medical literature search: A literature search was conducted using the WHO database of COVID-19 literature, Embase, and MEDLINE on April 13, 2020. Records from all sources were consolidated using Mendeley, and then uploaded to COVIDENCE software for review (www.covidence.org). Search strategies are reported in Appendix 1. English and Chinese language publications were included.

The goal was to identify case series that could be used to supplement the data available from government websites. Studies originating from countries with more than 1000 cases on April 13 2020 were included if one or more of following could be derived for a group of minimum 20 infected children:

- a) the age distribution of infected or admitted children
- b) the number who required admission to hospital or to ICU
- c) the number of deaths

Chinese language papers were translated by JL. Screening was performed by two authors. Discrepancies or disagreements were resolved by consensus.

Data were extracted on the total confirmed cases (defined as detection of COVID-19 from any site by any method), and the number and age range of pediatric cases, hospitalizations (or other measures of severity of illness) and deaths. As no standardized assessment of bias for such reports exists, none was performed.

Data Analysis

Population-based data were compiled separately for each country and then combined for analysis as appropriate. Descriptive analysis was conducted and medians or means of continuous

data were reported, where relevant. Sub-group analyses were done for different age ranges depending upon the availability of data.

Results

Web-based search

There were 70 countries with COVID-19 case counts exceeding 1000 on April 13 2020. They were of high (n=40), middle-high (n=22) and low-middle (n=8) income status. (Table 1).

Pediatric data were available for 23 of the 70 countries from government websites (Table 2).

Relative proportion of pediatric cases

There were 424 978 COVID-19 infections reported for the 23 countries of which 8113 (1.9%) were pediatric (with the upper limit of the pediatric age range varying from 14 years to 19 years).

Children accounted for a median of 3.5% (range 0.3-12.8%) of confirmed cases.

Age range and morbidity of infected children

There were 8 countries that reported the number of cases < 5 years of age, accounting for 1345 of 3262 cases < 15 years of age (41%) (Table 2). Admission occurred in 183 of 1606 children < 20 years of age in the 8 countries that reported this data (11%). The number of ICU admissions was not reported from any country. Death occurred in 5 of 5501 cases that occurred in countries where the number of pediatric deaths was stated on the website (0.09%). Another 5 deaths occurred in the Dominican Republic but the total number of infected children was not specified. ⁶

Medical literature search

The search identified 700 unique titles from which 66 full text manuscripts were pulled (Figure 1) leading to 9 included case series with data on 4251 children from 4 countries (Table 3)⁷⁻¹⁸ none of which were included in Table 2.

Estimates of hospitalization and ICU admissions

The majority of infected children had mild disease. The hospitalization rate was 147 of 745 cases (20%) (Data were provided only for the US study). Moderate to severe disease which would presumably usually require hospitalization was reported in 44% to 78% of infected children for the other case series that included both inpatients and outpatients (Table 3). The ICU admission rate was 44 of 2031 confirmed cases (2.2%) (6 studies) and 23 of 318 admitted children (7.2%) (2 studies) and ranged from 2% to 8%. Three of 8 children in the smaller study reporting need for ICU in admitted children (from China) required mechanical ventilation^{11,12} while data are not provided in the larger US report.¹⁸ For the 4251 cases in Table 3, there were 5 deaths reported (0.12%) although death may have occurred after these preliminary reports. The contribution of COVID-19 infection to death is not reported for these cases (a 10 month old infant with intussusception and a 14 year old male in China^{9,11} and 3 US cases with details pending).¹⁸

Correlation between age and severity of disease

Children < 1 year of age accounted for 40 of 125 children (32%) with severe or critical disease if one combined presumptive and confirmed cases (data are not provided for confirmed cases alone) in the largest study from China.⁹ They accounted for 31 of 171 admissions (18%) and 25 of 111 cases of pneumonia (23%) in a smaller study from China and 2 (25%) of 8 ICU admissions.^{11,12} In the US, 59 of 95 children <1 year of age (62%) were admitted with 5 (5% of all cases and 8% of hospitalized cases) requiring ICU admission.¹⁸

Combining data from the websites and from the publications

Admission occurred in 330 of 2361 cases (14%) where data were provided. There were minimum 15 deaths (not all websites and studies provided this data) in approximately 12 364 cases (the total number of cases is missing for the Dominican Republic where 5 deaths occurred) (0.12%).

Discussion

Compared to adults, young children typically have a higher incidence of symptomatic infection with respiratory viruses due to their high exposure rates and lack of pre-existing immunity.¹⁹ To date, the pattern of disease secondary to the novel SARS CoV-2 virus appears to be an exception to this rule. Children accounted for approximately 2% of confirmed cases in the current study, although they make up 18% to 22% of the population in Korea, China and the United States.^{15,18,20} Admission rates for infected children would be predicted to vary markedly depending upon the criteria for testing and for admission. When COVID-19 was first recognized, almost all infected children were admitted due to the severity of disease in adults. However, it has become apparent that most children can safely remain as outpatients. The preliminary admission rate was 20% in 745 cases in the US¹⁸ but they estimate that the true rate could be as low as 5.7% since data were missing for 1827 cases and hospitalization status is more likely to be known for more severe cases. ICU admission occurred in about 5% of pediatric hospitalizations in a hospital in Wuhan, but the rate would have been higher had children with mild disease not been admitted.^{11,12} The preliminary ICU admission rate in the US appears to be higher at about 10% of hospitalized children but could be lower as ICU status is more likely to be known for severe cases.¹⁸ However, this rate could also increase as some reported US cases will still be in hospital. The criteria for ICU admission vary by hospital and must become stricter

when there is a shortage of ICU beds. The death rate appears to be 0.1% to 0.2% in cases reported to date.

Children < 1 year of age seemed to account for a disproportionate percentage of admissions which could be because of clinicians having a lower threshold for admission of younger children.

It seems most likely that a large percentage of infected children are asymptomatic or manifest mild symptoms. The prevalence and the contribution of asymptomatic or mild infection to disease transmission is an emerging area of research.²¹⁻²³ Deaths from COVID-19 predominate in the elderly and are commonly associated with a hyper-inflammatory state.²⁴ It is not clear why this harmful immune response is rare in children. Understanding the presentations of COVID-19 disease in children and how they differ from the presentations of more common childhood viral illnesses should lead to a better understanding of the observed profound variation in morbidity and mortality between adults and children.²⁵

The main limitation of this study is that pediatric data are yet to be reported for most countries, data would not have been recently been updated on all websites, and data on hospitalizations were missing from most websites. Data from the publications will already be out of date. The number of reported cases is very much determined by testing algorithms which may favor testing of elderly adults over children. The age ranges that were analyzed were not uniform with the upper limit for the pediatric age range varying from 14 to 19 years. The data in the current study may under-estimate ICU admissions and deaths. Initial data from China in adults with pneumonia showed a lag of about 12 days between symptom onset and admission so these outcomes may yet occur for children in the current study.²⁶ The impact of COVID-19 on

children will undoubtedly differ in low-income countries; intensive care is often not available and the proportion of children in the population is much higher.²⁷

In conclusion, children account for a small percentage of symptomatic COVID-19 infections and severe and critical cases are rare. Further studies are required to delineate the true spectrum of pediatric disease worldwide and, perhaps even more importantly, the potential for children to develop severe disease if reinfection with COVID-19 or a similar coronavirus occurs later in life.

REFERENCES

1. Johns Hopkins University. Coronavirus COVID-19 global cases by the center for systems science and engineering (CSSE) at Johns Hopkins University (JHU). <https://gisanddata.maps.arcgis.com/apps/opsdashboard/index.html#/bda7594740fd40299423467b48e9ecf6>. Accessed March 29, 2020.
2. Rajgor DD, Lee MH, Archuleta S, Bagdasarian N, Quek SC. Correspondence The many estimates of the COVID-19 case. *Lancet Infect Dis.* 2020;3099(20):30244. doi:10.1016/S1473-3099(20)30244-9
3. Livingston E, Bucher K. Coronavirus Disease 2019 (COVID-19) in Italy. *JAMA.* 2020;2019:2020. doi:10.1001/jama.2020.4344
4. World Health Organization (WHO). Coronavirus Disease 2019 (COVID-19) Situation Report - 69.; 2020. <https://www.who.int/docs/default-source/coronaviruse/situation-reports>.
5. The World Bank. World Bank Country and Lending Groups. <https://datahelpdesk.worldbank.org/knowledgebase/articles/906519-world-bank-country-and-lending-groups>. Published 2020.
6. Ministerio De Salud Publica Repubilca Dominicana. Boletin Especial 25 COVID 19. [http://digepisalud.gob.do/documentos/?drawer=Vigilancia Epidemiologica*Alertas epidemiologicas*Coronavirus*Nacional*Boletin Especial COVID-19](http://digepisalud.gob.do/documentos/?drawer=Vigilancia+Epidemiologica*Alertas+epidemiologicas*Coronavirus*Nacional*Boletin+Especial+COVID-19). Published 2020. Accessed April 13, 2020.
7. Yanrong W, Xianfeng, W, Yang Y, Yingxia L, Lei L.

Epidemiological and clinical characteristics analysis of 30 childhood cases with 2019 novel coronavirus infection in Shenzhen. *Chin J Infect Dis.* 2020;38(0):E012-E012

8. Zheng F, Liao C, Fan Q-H, Hong-bo, C, Zhao, X, Xie Z et al. Clinical Characteristics of Children with Coronavirus Disease 2019 in Hubei, China. *Curr Med Sci.* March 2020. doi:10.1007/s11596-020-2172-6
9. Dong Y, Mo X, Hu Y, Qi X, Jiang F, Jiang Z et al. Epidemiological Characteristics of 2143 Pediatric Patients With 2019 Coronavirus Disease in China *Epidemiology of COVID-19 Among Children in China.* *Pediatrics.* 2020;(March):epub ahead of print. doi:10.1542/peds.2020-0702
10. Wang D, Ju XL, Xie F, Lu Y, Li FY, Huang HH, et al. Clinical analysis of 31 cases of 2019 novel coronavirus infection in children from six provinces (autonomous region) of northern China. *Zhonghua Er Ke Za Zhi.* 2020;58(4):E011.
11. Sun D, Li H, Lu X-X, Xiao H, Ren J, Zhang FR et al. Clinical features of severe pediatric patients with coronavirus disease 2019 in Wuhan: a single center's observational study. *World J Pediatr.* 2020:1-9. doi:10.1007/s12519-020-00354-4
12. Lu X, Zhang L, Du H, Zhang J, Li YY, Qu J et al. SARS-CoV-2 Infection in Children. *N Engl J Med.* 2020. doi:10.1056/NEJMc2005073
13. Qiu H, Wu J, Hong L, Luo Y, Song Q, Chen D. Clinical and epidemiological features of 36 children with coronavirus disease 2019 (COVID-19) in Zhejiang, China: An observational cohort study. *Lancet Infect Dis.* 2020;2019(20):1-8. doi:[https://doi.org/10.1016/S1473-3099\(20\)30198-5](https://doi.org/10.1016/S1473-3099(20)30198-5). [Published Online First: 2020/03/25].

14. Shim E, Tariq A, Choi W, Lee Y, Chowell G. Transmission potential and severity of COVID-19 in South Korea. *Int J Infect Dis.* 2020 Mar 18;93:339-344. doi: 10.1016/j.ijid.2020.03.031
15. Korean Society of Infectious Diseases, Korean Society of Pediatric Infectious Diseases, Korean Society of Epidemiology, Korean Society for Antimicrobial Therapy, Korean Society for Healthcare-associated Infection Control and Prevention, Korea Centers for Disease Control and Prevention. Report on the Epidemiological Features of Coronavirus Disease 2019 (COVID-19) Outbreak in the Republic of Korea from January 19 to March 2, 2020. *J Korean Med Sci.* 2020;35(10):e112. doi:10.3346/jkms.2020.35.e112
16. Cristiani L, Mancino E, Matera L, Nenna R, Pierangeli A, Scagnolari C, et al. Will children reveal their secret? The coronavirus dilemma. *Eur Respir J.* 2020 Apr 2 : 2000749. doi: 10.1183/13993003.00749-2020
17. Istituto Superiore di Sanità www.epicentro.iss.it/coronavirus/bollettino/Bollettino-sorveglianza-integrata-COVID-19_23-marzo%202020.pdf Epidemia COVID-19 Aggiornamento Nazionale. . Date last updated March 23, 2020.
18. Centers for Disease Control. Coronavirus Disease 2019 in Children — United States, February 12-April 2, 2020. *Morb Mortal Wkly Rep.* 2020;69:2-6.
19. Tregoning JS, Schwarze J. Respiratory viral infections in infants: Causes, clinical symptoms, virology, and immunology. *Clin Microbiol Rev.* 2010;23(1):74-98. doi:10.1128/CMR.00032-09
20. National Bureau of Statistics of China. China Statistical Yearbook. <http://www.stats.gov.cn/tjsj/ndsj/2018/indexeh.htm>.

21. Al-Tawfiq JA. Asymptomatic coronavirus infection: MERS-CoV and SARS-CoV-2 (COVID-19). *Travel Med Infect Dis.* 2020;(February):101608. doi:10.1016/j.tmaid.2020.101608
22. Hu Z, Song C, Xu C, Jin G, Chen Y, Xu X, et al. Clinical characteristics of 24 asymptomatic infections with COVID-19 screened among close contacts in Nanjing, China. *Sci China Life Sci.* 2020. doi:10.1007/s11427-020-1661-4
23. Kelvin AA, Halperin S. Comment COVID-19 in children : the link in the transmission chain. *Lancet Infect Dis.* 2020;2(20):2019-2020. doi:10.1016/S1473-3099(20)30236-X
24. Fu Y, Cheng Y, Wu Y. Understanding SARS-CoV-2-Mediated Inflammatory Responses: From Mechanisms to Potential Therapeutic Tools. *Virology Sin.* 2020;12250. doi:10.1007/s12250-020-00207-4
25. Lescure F, Bouadma L, Nguyen D, Parisey M, Wicky PH, Behillil S et al. Articles Clinical and virological data of the first cases of COVID-19 in Europe : a case series. *Lancet Infect Dis.* 2020 Mar 27. pii: S1473-3099(20)30200-0. doi: 10.1016/S1473-3099(20)30200-0.
26. Li Q, Guan X, Wu P, Wang X, Zhou L, Tong Y et al. Early Transmission Dynamics in Wuhan, China, of Novel Coronavirus–Infected Pneumonia. *N Engl J Med.* 2020:1199-1207. doi:10.1056/nejmoa2001316
27. Evans D, Werker E. What a Population’s Age Structure Means for COVID-19’s Impact in Low-Income Countries. March 25, 2020. <https://www.cgdev.org/blog/what-populations-age-structure-means-covid-19s-impact-low-income-countries>. Published 2020.

Appendix 1 Search Strategies

Medline and Embase, Ovid multifile search

- 1 ((Wuhan adj3 (corona or virus)) or (ncov or COV 2 or 2019-nCoV or 2019nCoV or novel corona* or covid-19 or corona virus 2 or coronavirus* 2 or corona* 2019 or SARS-COV-2)).mp. (3534)
- 2 (baby* or babies* or newborn* or infan* or neonat* or preschool* or pre-school* or child* or pediater* or paediatr* or teen* or adolescen* or youth).mp. (8960913)
- 3 1 and 2 (261)
- 4 remove duplicates from 3 (166)
- 5 limit 4 to yr="2019 -Current" (102)

Google Scholar

Google Scholar was searched March 20, 2020. The COVID-19 search concept was adapted from search developed by Wichor Bramer and posted on Search blocks/Zoekblokken (<https://blocks.bmi-online.nl/catalog/397>, visited March 18, 2020) Records were harvested using Publish and Perish

(covid19|"covid 19"|2019ncov|"2019 ncov|cov|coronavirus"| "2019 novel|new coronavirus|cov"| "wuhan coronavirus|cov|ncov|outbreak"| "wuhan*coronavirus|cov|ncov "|coronavirus|cov|ncov*wuhan") AND (child|infant|adolescent|pediatric)

WHO COVID-19 database

The World Health Organization (WHO) COVID-19 record set posted March 19, 2020 was downloaded from <https://www.who.int/emergencies/diseases/novel-coronavirus-2019/global-research-on-novel-coronavirus-2019-ncov>. The records were imported into Reference Manager, where topical queries were performed:

All Indexed Fields {pediatric*} OR {paediatr*} OR {child} OR {infan*} OR {neonat*} OR { {adolesc*} OR {youth} OR {teen*}}

OR

All Non-Indexed Fields {pediatric*} OR {paediatr*} OR {child} OR {infan*} OR {neonat*} OR { {adolesc*} OR {youth} OR {teen*}}

Figure I - PRISMA diagram for systematic review for case series with minimum 20 children that provided data on age range or morbidity

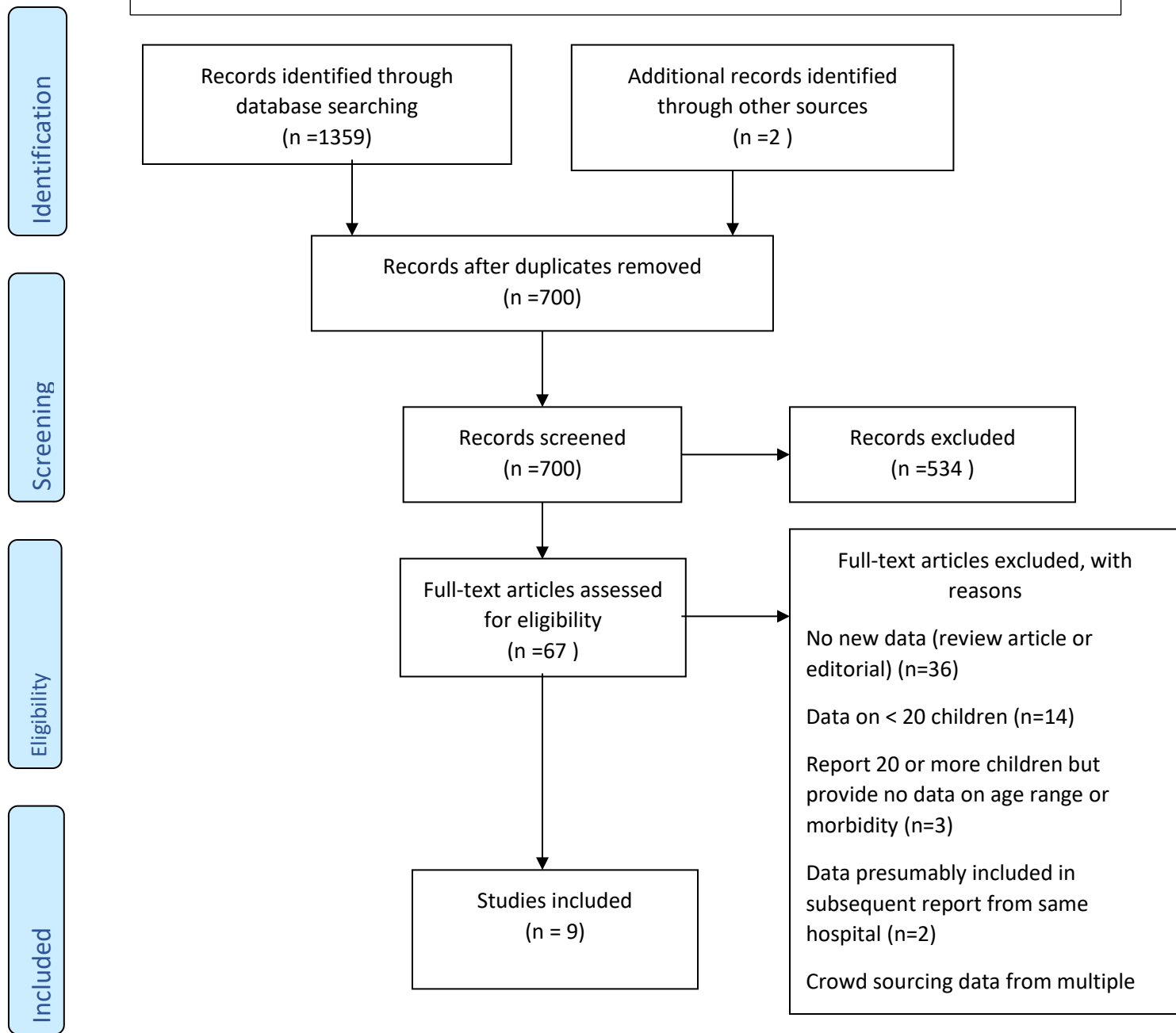


Table 1- Countries reporting more than 1000 adult and pediatric COVID cases on the World Health Organization website on April 13, 2020

	Country	Income Status	Total Confirmed Cases	Total Deaths N (%)	Pediatric Data on Government Website
1	United States of America	High	524514	20444 (3.9)	yes
2	Spain	High	166019	16972 (10.2)	yes
3	Italy	High	156363	19901 (12.7)	
4	Germany	High	123016	2799 (2.3)	yes
5	France	High	94382	14374 (15.2)	
6	The United Kingdom	High	84283	10612 (12.6)	
7	China	Upper Middle	83597	3351 (4.0)	
8	Islamic Republic of Iran	Upper Middle	71686	4474 (6.2)	
9	Turkey	Upper Middle	56956	1198 (2.1)	
10	Belgium	High	29647	3600 (12.1)	
11	Netherlands	High	25587	2737 (10.7)	yes
12	Switzerland	High	25220	858 (3.4)	yes
13	Canada	High	23702	674 (2.8)	yes
14	Brazil	Upper Middle	20727	1124 (5.4)	
15	Russian Federation	Upper Middle	18328	148 (0.8)	
16	Portugal	High	16585	504 (3.0)	
17	Austria	High	13937	350 (2.5)	yes
18	Israel	High	10878	103 (0.9)	
19	Republic of Korea	High	10537	217 (2.1)	yes
20	Sweden	High	10483	899 (8.6)	yes
21	Ireland	High	9655	334 (3.5)	yes
22	India	Lower Middle	9152	308 (3.4)	
23	Ecuador	Upper Middle	7466	333 (4.5)	yes
24	Japan	High	7255	102 (1.4)	
25	Chile	High	7213	80 (1.1)	
26	Peru	Upper Middle	6848	181 (2.6)	
27	Poland	High	6674	232 (3.5)	
28	Norway	High	6415	103 (1.6)	yes
29	Australia	High	6322	61 (1.0)	yes
30	Romania	Upper Middle	6300	306 (4.9)	
31	Denmark	High	6174	273 (4.4)	yes
32	Czechia	High	5991	138 (2.3)	
33	Pakistan	Lower Middle	5374	93 (1.7)	yes
34	Malaysia	Upper Middle	4683	76 (1.6)	
35	Philippines	Lower Middle	4648	297 (6.4)	

36	Saudi Arabia	High	4462	59 (1.3)	
37	Indonesia	Lower Middle	4241	373 (8.8)	
38	Mexico	Upper Middle	4219	273 (6.5)	
39	United Arab Emirates	High	4123	22 (0.5)	
40	Serbia	Upper Middle	3630	80 (2.2)	
41	Luxembourg	High	3281	66 (2.0)	
42	Panama	High	3234	79 (2.4)	
43	Ukraine	Lower Middle	3102	93 (3.0)	
44	Qatar	High	2979	7 (0.2)	
45	Finland	High	2974	56 (1.9)	yes
46	Dominican Republic	Upper Middle	2967	173 (5.8)	yes
47	Colombia	Upper Middle	2709	100 (3.7)	yes
48	Thailand	Upper Middle	2579	40 (1.6)	
49	Belarus	Upper Middle	2578	26 (1.0)	
50	Singapore	High	2532	8 (0.3)	
51	South Africa	Upper Middle	2173	25 (1.2)	
52	Greece	High	2114	98 (4.6)	yes
53	Egypt	Lower Middle	2065	159 (7.7)	
54	Argentina	Upper Middle	1975	82 (4.2)	yes
55	Algeria	Upper Middle	1914	293 (15.3)	yes
56	Iceland	High	1701	8 (0.5)	yes
57	Republic of Moldova	Lower Middle	1662	33 (2.0)	yes
58	Morocco	Lower Middle	1661	118 (7.1)	
59	Croatia	High	1600	23 (1.4)	
60	Hungary	High	1458	109 (7.5)	
61	Iraq	Upper Middle	1352	76 (5.6)	
62	Estonia	High	1309	25 (1.9)	yes
63	Kuwait	High	1234	1 (0.1)	
64	Slovenia	High	1205	53 (4.4)	
65	Bahrain	High	1136	6 (0.5)	
66	Azerbaijan	Upper Middle	1098	11 (1.0)	
67	New Zealand	High	1064	5 (0.5)	yes
68	Lithuania	High	1062	24 (2.3)	
69	Armenia	Upper Middle	1039	14 (1.3)	
70	Bosnia and Herzegovina	Upper Middle	1007	38 (3.8)	

Table 2: Burden of pediatric disease as obtained from government websites from countries reporting more than 1000 adult and pediatric COVID cases on the World Health Organization website on April 13, 2020

Country	Total cases (adult and pediatric)	Pediatric cases N (% of total cases)* A. Cases <15 years B. Cases < 18 years C. Cases <20 years	Age distribution N (% of all pediatric cases)	Pediatric admissions A. Pediatric admissions <15 years N (%) B. Pediatric admissions <18 years N (%) C. Pediatric admissions <20 years N (%) D. No. of ICU admissions (% of total pediatric admissions)	Age distribution of pediatric admissions N (% of total children admitted)	Pediatric deaths A. N (% of total pediatric cases) B. N (% of total pediatric admissions) C. Age distribution
Spain ^a	135032	A. 349 (0.3) B. NR C. NR	< 2 yrs: 72 (21) 2-4 yrs: 47 (14) 5-14 yrs: 230 (67) 15-29 yrs: 4668 (NI)	A. 92 (26) B. NR C: NR D. NR	<2 yrs: 34 (37) 2-4 yrs: 14 (15) 5-14 yrs: 44 (48) 15-29 yrs: 765 (NI)	A. 2 (0.5) B. 2 (2.2) C. <2: 1 2-4: 0 5-14: 0 15-29: 6
Germany ^b	125098	A. 3423 (2.7) B. NR C. NR	0-4 yrs: 979 (29) 5-14 yrs: 2444 (71) 15-34 yrs: 30246 (NI)	NR	NR	NR
Netherlands ^c	27419	A. 111 (0.4) B. NR C. 299 (1.1)	0-4 yrs: 60 (20) 5-9 yrs: 10 (3) 10-14 yrs: 41 (14) 15-19 yrs: 188 (63)	A: 44 (39) B. NR C. 64 (21) D. NR	0-4 yrs: 36 (56) 5-9 yrs: 2 (3.1) 10-14 yrs: 6 (9.3) 15-19 yrs: 20 (31)	A. 0 (0) B. 0 (0) C. NR

Switzerland ^d	25,665	A. NR B. NR C. 761 (3.0)	0-9 yrs: 98 (13) 10-19 yrs: 663 (87)	NR	NR	NR
Canada ^e	24804	A. NR B. NR C. 721 (2.9)	0-19 yrs: 721 (100)	A. NR B. NR C. 10 (1) D. NR	NR	A. 0 (0) B. 0 (0) C. NR
Austria ^f	14185	A. 388 (2.7) B. NR C. NR	0-4 yrs: 72 (19) 5-14 yrs: 316 (81) 15-24 yrs: 1325 (NI)	NR	NR	A. 0 (0) B. NR C. NR
Sweden ^g	11549	A. NR B. NR C. 1(0.0)	0-9 yrs: 1 (100) 10-19 yrs: 0 (0.0)	A. 1 (100) B. 1 (100) C. 1 (100) D. NR	0-9 yrs: 1 (100) 10-19 yrs: 0 (0.0)	A. 0 (0) B. 0 (0) C. NR
Ireland ^h	9484	A. 115 (1.2) B. NR C. NR	<1 yr: 19 (17) 1-4 yrs: 29 (25) 5-14 yrs: 67 (58) 15-24 yrs: 598 (NI)	A. 16 (14) B. NR C. NR D. NR	<5 yrs: 11 (69) 5-14 yrs: 5 (31) 15-24 yrs: 44 (NI)	NR
Ecuador ⁱ	7466	A. 139 (1.8) B. NR C. 240 (3.2)	<1 yr: 12 (5) 1-4 yrs: 25 (10) 5-9 yrs: 51 (21) 10-14 yrs: 51 (21) 15-19 yrs: 101 (42)	NR	NR	NR

Norway ^j	6623	A. NR B. NR C. 353 (5.3)	0-9 yrs: 73 (21) 10-19 yrs: 280 (79)	NR	NR	A. 0 (0) B. NR C. NR
Denmark ^k	6496	A. NR B. NR C. 236 (3.6)	0-9 yrs: 69 (29) 10-19 yrs: 167 (71)	A. NR B. NR C. 16 (6.8) D. NR	0-9 yrs: 9 (56) 10-19 yrs: 7 (44)	NR
Australia ^l	5805	A. NR B. NR C. 190 (3.3)	0-9 yrs: 45 (24) 10-19 yrs: 145 (76)	NR	NR	NR
Pakistan ^m	5496	A. NR B. NR C. NR (6.8)	10-19 yrs: NR (6.8)	NR	NR	NR
Dominican Republic ⁿ	3167	NR	NR	NR	NR	A. 5 (NR) B. 5 (NR) C. < 1: 2 (40) 1-4: 1 (20) 10-19: 2 (40)
Finland ^o	3064	A. NR B. NR C. 204 (6.7)	0-9 yrs: 49 (24) 10-19 yrs: 155 (76)	NR	NR	NR
Colombia ^p	2852	A. NR B. NR C. 178 (6.2)	0-9 yrs: 68 (38) 10-19 yrs: 110 (62)	NR	NR	A. 2 (1.1) B. NR C. 0-9: 1 (50) 10-19: 1 (50)
Argentina ^q	2133	A. NR B. NR C. 107 (5.0)	0-9 yrs: 39 (36) 10-19 yrs: 68 (64)	NR	NR	A. 0 (0) B. NR C. NR

Algeria ^r	2070	A. 39 (1.9) B. NR C. NR	< 1 yr: 1 (2.6) 1-14 yrs: 38 (97.3) 15-24 yrs: 61 (NI)	NR	NR	A. 1 (2.6) B. NR C. < 1: 0 (0.0) 1-14: 1 (100) 15-24: 0 (NI)
Republic of Moldova ^s	1712	A. NR B. NR C. 127 (7.4)	<1 yr: 7 (5.5) 1-4 yrs: 20 (16) 5-9 yrs: 31 (24) 10-19 yrs: 69 (54)	NR	NR	NR
Iceland ^t	1711	A. NR B. 171 (10.0) C. NR	<1 yr: 8 (4.7) 1-5 yrs: 24 (14) 6-12 yrs: 50 (29) 13-17 yrs: 89 (52)	NR	NR	NR
Estonia ^u	1332	A. NR B. NR C. 47 (3.5)	0-4 yrs: 2 (4.3) 5-9 yrs: 7 (15) 10-14 yrs: 19 (40) 15-19 yrs: 19 (40)	NR	NR	NR
New Zealand ^v	1072	A. NR B. NR C. 137 (12.8)	0-9 yrs: 28 (20) 10-19 yrs: 109 (80)	NR	NR	NR
Greece ^w	743	A. NR B. 27 (3.6) C. NR	0-17 yrs: 27 (100)	NR	NR	NR

*If any of the age ranges extended beyond 19 years, they were excluded from this calculation.

Legend: NR – not reported, NI – not included as extends into adult age range

^a<https://www.isciii.es/QueHacemos/Servicios/VigilanciaSaludPublicaRENAVE/EnfermedadesTransmisibles/Documents/INFORMES/Informes%20COVID-19/Informe%20n%C2%BA%2021.%20Situaci%C3%B3n%20de%20COVID-19%20en%20Espa%C3%B1a%20a%206%20de%20abril%20de%202020.pdf>

^bhttps://experience.arcgis.com/experience/478220a4c454480e823b17327b2bf1d4/page/page_0/

^c<https://www.rivm.nl/coronavirus-covid-19/grafieken>

^d<https://covid-19-schweiz.bagapps.ch/fr-1.html>

^e<https://www.canada.ca/content/dam/phac-aspc/documents/services/diseases/2019-novel-coronavirus-infection/surv-covid19-epi-update-2020-04-13-eng.pdf>

^fhttps://info.gesundheitsministerium.at/dashboard_Epidem.html?l=en

^g<https://platz.se/coronavirus/>

^h<https://www.gov.ie/en/publication/b86091-an-analysis-of-the-836-cases-of-covid-19-in-ireland-as-of-saturday-2/#age-range-affected>

ⁱhttps://www.salud.gob.ec/wp-content/uploads/2020/04/Boletin-045-AM_Nacional.pdf

^j<https://www.vg.no/spesial/2020/corona/>

^k<https://files.ssi.dk/COVID19-overvaagningsrapport-14042020-wgkv>

^l[https://www1.health.gov.au/internet/main/publishing.nsf/Content/1D03BCB527F40C8BCA258503000302EB/\\$File/covid_19_australia_epidemiology_report_10_reporting_week_ending_23_59_aest_5_april_2020.pdf](https://www1.health.gov.au/internet/main/publishing.nsf/Content/1D03BCB527F40C8BCA258503000302EB/$File/covid_19_australia_epidemiology_report_10_reporting_week_ending_23_59_aest_5_april_2020.pdf)

^m<http://covid.gov.pk/stats/pakistan>

ⁿhttp://digepisalud.gob.do/documentos/?drawer=Vigilancia%20Epidemiologica*Alertas%20epidemiologicas*Coronavirus*Nacional*Boletin%20Especial%20COVID-19

^o<https://thl.fi/en/web/infectious-diseases/what-s-new/coronavirus-covid-19-latest-updates>

^p<https://www.ins.gov.co/Noticias/Paginas/Coronavirus.aspx>

^q<https://www.argentina.gob.ar/salud/coronavirus-COVID-19/sala-situacion>

^r<http://covid19.cipalgerie.com/fr/statistiques-detaillees-covid-19-algerie/>

^s<http://gismoldova.maps.arcgis.com/apps/opsdashboard/index.html#/d274da857ed345efa66e1fbc959b021b>

^t<https://www.covid.is/data>

^u<https://www.terviseamet.ee/et/koroonaviirus/koroonakaart>

^v<https://www.health.govt.nz/our-work/diseases-and-conditions/covid-19-novel-coronavirus/covid-19-current-situation/covid-19-current-cases>

^w<https://eody.gov.gr/wp-content/uploads/2020/03/covid-gr-daily-report-20200324.pdf>

Country - population studied (reference)	Study end date	Number screened	Total confirmed cases	Pediatric cases	Age distribution	Severity of illness	Hospitalization and Mortality A. Number admitted B. Number of symptomatic children that were at least moderate severity ^a C. Number admitted to ICU D. Number that were severe or critical ^b E. Deaths	Age distribution of severe and/or critical cases
China –children admitted to one hospital in Shenzhen ⁷	9 Feb	NR	NR	30	Median 7 yrs old School age: 20 (67%)	Asymptomatic: 6 (20%) Mild: 10 (33%) Common: 13 (43%) Severe: 1 (3%) Critical: 0	A. only admitted children included in study B. 14/24 (58%) C. 0 D. 0 E. 0	NA
China – children <15 yrs old admitted to one of 10 public hospitals in urban and peri-urban regions of Wuhan ⁸	10 Feb	NR	NR	25	Median 3 yrs <3yrs:10 (40%) 3-6yrs:6 (24%) 6-14yrs:9 (36%)	URI:8 (32%) Mild pneumonia:15 (60%) Critical:2 (8%)	A. 25 (100%) B. 17 (68%) C. NR D. 2 (8%) E. 0	<1 yr:1 (50%) 1 yr old:1(50%)
China – national cohort of children < 18 yrs old (not clear if only admitted children included) ⁹	11Feb	NR	731 ^c	731	<1yr: 86 (12%) 1-5yr: 137 (19%) 6-10yr: 171 (23%) 11-15yr: 180 (25%) >15 yr 157 (22%)	Asymptomatic: 94 (13%) Mild: 315 (43%) Moderate: 300 (41%) Severe: 18 (2.5%) Critical : 3 (0.4%)	A. NR B. 321 (44%) C. 21 (2.9%) D.NR E. 1	Combined data for confirmed and probable cases ^d <1yr: 40 (32) 1-5 yrs: 36 (529) 6-10 yrs: 22 (18) 11-15 yrs: 17 (14) > 15 yr: 10 (8)
China – hospitalized children < 18 yrs old from 6 provinces in northern China ¹⁰	21 Feb			31		Asymptomatic: 4 (13%) Mild: 13 (42%) Ccommon type: 14 cases (45%) Severe/ Critical: 0	A. only admitted children included in study B.14 (45%) C.NR D.0 E. 0	NA

China – city-wide cohort of children < 15 yrs old admitted in Wuhan ^{11,12}	26 Feb	1391	171 (12%)	171	<1yr: 31 (18%) 1-5yr: 40 (23%) 6-10yr: 58 (34%) 11-15yr: 42 (25%)	Asymptomatic: 27 (16%) URI:33 (19%) Moderate ^e :112 (66%) Severe: 5 (2.9%) Critical: 3 (1.8%)	A. only admitted children included in study B. 120/153 (78%) C. 8 (5%) ^f D. 8 (5%) ^f E. 1	<1 yr: 2 (25%) 1-5 yrs: 2 (25%) 6-10 yrs: 1 (13%) 11-15 yrs:3 (38%)
China – children < 17 yrs old admitted to 3 hospitals in Zhejiang province ¹³	01 Mar	NR	661	36	Mean 8.3 yrs <6 yrs: 10 (28%) 6-16 yrs: 26 (72%)	Asymptomatic 10 (28%) Mild: 7 (19%) Moderate: 19 (53%) Severe: 0 (0%)	A. only admitted children included in study B. 19/26 (73%) C. 0 D. 0 E. 0	NA
Republic of Korea – national cohort of all ages ^{14,15}	26 Feb		6284	337 (0-19yrs) (5%)	45 (0-9yrs) (13%) 292 (10-19yrs) (87%)	Numbers not provided but reported as “mostly mild”	NR	NA
Italy – national cohort of all ages ^{16,17}	23 Mar	NR		318 (0-9yrs) (0.5%) 386 (10-19yrs) (0.7%)	NR	NR	A. NR B. NR C. 0 D. NR E. 0	
United States - national cohort of children ¹⁸	02Apr	NR	149082 ^g	2572 (0-17 yrs) (1.7% of all cases)	<1yr: 398 (15%) 1-4yrs: 291 (11%) 5-9yrs: 388 (15%) 10-14yrs: 682 (27%) 15-17yrs: 813 (32%)	NR	A. 147/745 (20%) B. NR C. 15/745 (2% of all cases ; 10% of admitted cases) D. NR E. 3	ICU cases (N=15) ^h < 1yr: 5 1-4 yrs: 0 5-9 yrs:2 10-14yrs:6 15-17yrs: 2

Table 3- Details of pediatric COVID-19 case series with minimum 20 cases from review of the literature April 2 2020 (with US study updated April 6 2020)

^a This is a proxy for the number requiring hospitalization where data are not provided. A higher percentage may have been admitted in before it was recognized that children generally have an excellent prognosis. .

^b This is a proxy for the number requiring ICU admission where data were not provided

^c National data published on the same date at <https://cdn.onb.it/2020/03/COVID-19.pdf.pdf> reported that 965 of 44672 cases (2.2%) were pediatric including 416 children 0-9 yrs and 549 children 10-19 yrs

^d In this study the age distribution stated addressed the combined group of confirmed and probable; the breakdown for confirmed is not available by age

^e The number with moderate severity was not stated but calculated from subtracting the mild/ asymptomatic (n=60) and the severe/critical (n=8) from the 170 that charts were available for review. We used as our total 170 as the authors stated that “*A total of 21 patients were in stable condition in the general wards, and 149 have been discharged from the hospital.*”

^f These data were gathered by incorporating data from both references. Sun et al reported on 8 children admitted to the ICU of Wuhan hospital (the only hospital that admits children in Wuhan) during an almost identical study period to the Lu study so it was assumed that they were the same children.

^g These are cases where the age was known. There were an additional 90,197 cases with data pending.

^h Data were estimated from a bar graph

Legend – MV – mechanical ventilation; NA – not applicable; NR – not reported; yrs - years