

1 **Hydroxychloroquine plus azithromycin: a potential interest in reducing in-**
2 **hospital morbidity due to COVID-19 pneumonia (HI-ZY-COVID)?**

3 Benjamin Davido^{1,§}, Thibaud Lansaman², Simon Bessis¹, Christine Lawrence³, Jean-
4 Claude Alvarez⁴, H el ene Mascitti¹, Fr ed erique Bouchand⁵, Pierre Moine⁶, V eronique
5 Perronne¹, Aur elie Le Gal¹, Djillali Annane⁶, Christian Perronne¹, Pierre De Truchis^{1,§},
6 on behalf of the COVID-19 RPC Team*

7 ¹ Maladies Infectieuses, Universit  Paris-Saclay, AP-HP H pital Raymond Poincar ,
8 Garches, France

9 ² R education fonctionnelle, Universit  Paris-Saclay, AP-HP H pital Raymond
10 Poincar , Garches, France

11 ³ EOH, Universit  Paris-Saclay, AP-HP H pital Raymond Poincar , Garches, France

12 ⁴ Pharmaco-toxicologie, Universit  Paris-Saclay, AP-HP H pital Raymond Poincar ,
13 Garches, France

14 ⁵ Pharmacie Hospitali re, Universit  Paris-Saclay, AP-HP H pital Raymond
15 Poincar , Garches, France

16 ⁶ R animation m dicale, Universit  Paris-Saclay, AP-HP H pital Raymond Poincar ,
17 Garches, France

18 §: Both authors contributed equally to this work.

19

20 **Keywords:** hydroxychloroquine, azithromycin, Covid-19, pneumonia

21 **Financial Disclosure:** The authors have no financial relationships relevant to this
22 article to disclose.

23 **Conflict of interest statement:** The authors have no specific conflict of interest.

24

25 **Corresponding author:**

26 Benjamin Davido, Service de Maladies Infectieuses et Tropicales

27 Hôpital Raymond-Poincaré, Garches 92380, France.

28 Tel: +33-1-47107758, e-mail: benjamin.davido@aphp.fr

29

30 Abstract word count: 220/250

31 Body of text word count: 2100 words

32

33

34

35

36

37

38

39

40

41

42

43

44

45

46

47

48 **Abstract:**

49 Introduction: Hydroxychloroquine (HCQ) with or without azithromycin is currently still
50 debated as a potential treatment for the COVID-19 epidemic. Some studies showed
51 discrepant results. However, timing for the treatment initiation and its setting (in-
52 hospital or out-patient) are not consistent across studies.

53 Methods: Monocentric retrospective study conducted from 2th March to 17th April
54 2020, in adults hospitalized in a tertiary hospital for COVID-19. Patients
55 characteristics were compared between groups depending on the therapy received
56 (HCQ/azithromycin taken \geq 48 hours or other treatment). Outcomes were evaluated
57 from admission, by the need for intensive care unit (ICU) support and/or death.
58 Univariate analyses were performed using non-parametric tests and confirmed by a
59 multiple logistic regression using Pearson correlation test.

60 Results: Among 132 patients admitted for COVID-19 in the medicine ward, 45
61 received HCQ/azithromycin \geq 48 hours, with a favorable outcome in 91.1% of cases
62 (OR=6.2, $p=0.002$) versus others regimen ($n=87$). Groups were comparable at the
63 baseline in terms of age, sex, comorbidities, extend in thoracic imaging, and severity.

64 Among patients that required to be transferred to ICU ($n=27$) (for mechanical
65 ventilation), median delay for transfer was 2 days (IQR 1-3). We report only 1 patient
66 that presented an adverse event (a prolonged QT interval on EKG) that required to
67 discontinue HCQ.

68 Conclusion: The present study suggests a potential interest of the combination
69 therapy using HCQ/azithromycin for the treatment of COVID-19 in in-hospital
70 patients.

71

72 **Introduction:**

73 Hydroxychloroquine (HCQ) is currently still debated as a potential treatment for the
74 COVID-19 epidemic. In France, Gautret *et al.* [1,2] and Million *et al.* [3] showed in
75 Marseille that a combination therapy using HCQ and azithromycin could potentially
76 reduce viral shedding and locally flatten the epidemic curve by reducing the number
77 of pneumonias associated with COVID-19. Although these studies are of interest
78 considering the sample size (n>1000) they are partly conducted on outpatients and
79 do lack a control group without HCQ and azithromycin.

80 Concomitantly, a study conducted by Mahevas *et al.* [4] decided to evaluate HCQ
81 alone (600 mg per day) prescribed in an in-hospital setting within 48 hours after
82 admission (n=84) in comparison to standard of care, and showed no difference
83 between groups assessed by a transfer in intensive care unit (ICU) and/or death.
84 Those findings are concordant with a recent publication issued in United States by
85 Magagnoli *et al.* [5] despite some bias at baseline.

86 More, recently Esper *et al.* [6] in Brazil reported a potential interest of HCQ (using a
87 loading dose of 800 mg followed by 600 mg during 6 days) plus azithromycin in the
88 prevention of hospital admission in patients presenting compatible symptoms of
89 COVID-19 (a 2.8-fold decrease if HCQ was administered within the first 7 days of
90 symptoms).

91 To our knowledge, at the time being, there is no study evaluating the interest of an
92 administration of HCQ plus azithromycin during at least 48 hours in an in-hospital
93 setting and its impact on the admission in intensive care unit (ICU). Since the 25th of
94 March 2020 in France, in the context of the state of health emergency, the ministerial

95 decree #2020-314 authorized the in-hospital prescription of HCQ for COVID-19
96 patients. Therefore, we decided to report our own experience of this regimen in order
97 to draw conclusions whether we pursue such combination therapy for hospitalized
98 patients.

99

100 **Methods:**

101 *Setting*

102 We conducted a monocentric and retrospective study, from 2th March 2020 to 17th
103 April 2020, regarding adults admitted in our medicine wards in a tertiary university
104 hospital namely Hôpital Raymond Poincaré (AP-HP), Garches, France. For decades,
105 this hospital, and particularly the ICU, is specialized in the management of
106 neurological impairment and infectious diseases. Since the beginning of the COVID-
107 19 outbreak, an entire building, namely Widal (in honor of Doctor Fernand Widal),
108 was entirely dedicated to admit only COVID-19 positive patients. During the peak of
109 the epidemic, we had a maximum capacity of 85 beds for medicine and 32 beds for
110 ICU.

111 We included all the adults admitted in medicine for a COVID-19 infection confirmed
112 by SARS-CoV-2 PCR and/or a compatible pulmonary CT-scan. Exclusion criteria
113 were i) patients discharged from ICU to a medicine ward; ii) opposition to collect data
114 expressed by the patient.

115

116 *Data collection*

117 The following data were collected from patient's medical charts:

- 118 - Patient characteristics: age, sex, diabetes, cardiovascular risk factor, smoking
- 119 habits, obesity, chronic pulmonary disease, Charlson comorbidity score,
- 120 - Infection characteristics: delay between onset of symptoms and admission,
- 121 presence of super-infection, C-reactive protein (CRP) and white blood cell count
- 122 (WBC) at admission, percentage of lung injuries on CT-scan if applicable, positive
- 123 PCR amplifying the betacoronavirus E gene and the SARS-CoV-2 RdRp gene on
- 124 nasopharyngeal swab or sputum,
- 125 - Treatment characteristics: requiring ICU support with invasive ventilation,
- 126 associated therapeutic strategies (especially HCQ and azithomycin),
- 127 - Unfavorable outcome was evaluated after admission, by the need for ICU support
- 128 and/or death,
- 129 - The patients were followed-up until hospital discharge.

130

131 *Treatment strategies*

132 All patients under oxygen received systematically a beta-lactam for at least 5 days,

133 using preferentially ceftriaxone to treat a potential super-infection.

134 Patients were eligible to a targeted therapy against COVID-19 considering the

135 following indications: i) patient presenting a clinical pneumonia confirmed by SARS-

136 CoV-2 PCR requiring oxygen therapy (independently of the CT scan findings); ii) high

137 suspicion of COVID-19 pneumonia considering the clinical presentation and

138 confirmed by a pulmonary CT-scan showing ground-glass opacity affecting $\geq 10\%$ of
139 the whole parenchyma

140 Before HCQ initiation, patients had systematically an EKG to evaluate the corrected
141 QT interval using the Framingham formula, and monitored 2 times per week during
142 10 days. A loading dose at day 1 with 800 mg/day was administered followed by a
143 maintenance dose of 400 mg/day up to 600 mg/day in case of obesity (body mass
144 index (BMI) > 30) for a total 10 days. In addition, 500 mg of azithromycin was
145 prescribed the first day, followed by 250 mg for 4 days. Patients were informed that
146 HCQ is currently off-label for the treatment of COVID-19. In case they refused the
147 prescription of HCQ or the latter was contraindicated, it was noted into their medical
148 chart and patients were eligible for other therapeutic strategies.

149 Primary objective was to evaluate whether HCQ plus azithromycin (HI-ZY-COVID)
150 initiated after their admission was associated with a favorable outcome. For analysis
151 purposes, we stated that patients should receive at least 48 hours of the above
152 combination therapy to be considered effective. Therefore, patients were divided into
153 2 groups: the ones who received specifically HCQ/azithromycin for 48 hours or more
154 and the remaining.

155

156 *Statistical analysis*

157 Quantitative variables were expressed using mean and standard deviation or median
158 and interquartile range (IQR) when appropriate. Qualitative variables were described
159 by percentage. Comparisons were performed using non-parametric tests with a
160 Yates' continuity corrected chi-square test for qualitative variables and a Mann-
161 Whitney test for quantitative variables. Multiple logistic regression test was performed

162 using Pearson correlation test. Analyses were performed using GraphPad Prism
163 v.8.3.1 (GraphPad Software Inc., La Jolla, CA). Statistical significance was defined
164 for $p \leq 0.05$.

165

166 *Compliance with Ethical Standards*

167 All procedures performed in studies involving human participants were in accordance
168 with the ethical standards of the institutional and/or national research committee and
169 with the 1964 Helsinki Declaration and its later amendments or comparable ethical
170 standards. This cohort is registered on ClinicalTrials.gov (NCT04364698). The study
171 was approved by the local Ethics Committee. As data used in the study were
172 anonymous and retrospective, the requirement for informed consent was waived by
173 the Ethics Committee.

174

175 **Results:**

176 Overall 132 were eligible for the analysis (see flowchart in Figure 1). Forty-five
177 patients received HCQ plus azithromycin for more than 48 hours after admission. The
178 remaining patients (n=87) were in the others regimen group. Of note, in patients who
179 did not receive HCQ, 5 had cardiac contraindication and 2 refused to be treated with
180 this molecule.

181 Patient characteristics between HCQ/azithromycin ≥ 48 hours and the no-
182 HCQ/azithromycin (control group) were comparable and are detailed in Table 1. It
183 should be noted that patients receiving HCQ/azithromycin had higher need for
184 oxygen and higher CRP level at admission than the control group.

185 For analysis purposes the cohort was divided according to the outcome into 2
186 groups: “favorable outcome” and “unfavorable outcome” (ICU and/or death). Main
187 findings are summarized in Table 2. Well-known comorbidities in COVID-19
188 (cardiovascular, respiratory, diabetes, immune deficiency, obesity) that were similar
189 at baseline were not associated with the outcome ($p>0.2$). During the course of
190 HCQ/azithromycin, we report only 1 patient that presented an adverse event (a
191 prolonged QT interval on EKG) without clinical event that required to discontinue
192 HCQ before 48h, and was therefore placed in the azithromycin group.

193 Among patients that required to be transferred to ICU ($n=27$) (for mechanical
194 ventilation), median delay for transfer was 2 (1-3) days. Up to this day, 10 (37%)
195 patients died in ICU and 2 in medical ward.

196 For clarification, outcomes according to therapeutic strategy are illustrated in Figure
197 2.

198 Multiple logistic regression confirmed that a favorable outcome was associated with
199 receiving HCQ plus azithromycin ($p=0.009$), oxygen flow ($p<0.0001$), lymphocyte
200 count ($p=0.002$) and CRP ($p=0.002$) detailed in Figure 3.

201

202 **Discussion:**

203 Our study supports that in-hospital patients treated with HCQ plus azithromycin for
204 more than 48 hours, have a reduced risk to be transferred to ICU and/or to decease
205 (OR=6.2).

206 Our findings are concordant with Gautret *et al.* [1,2] who revealed good clinical and
207 virologic outcomes using this combination therapy, in the limit of the absence of a

208 control group in his study conducted especially among ambulatory care patients.
209 Furthermore, Esper *et al.* [6] reported efficacy of the combination therapy of
210 HCQ/azithromycin in outpatients exclusively. The main limit of this study is the lack of
211 PCR testing, despite the fact the majority of patients included in the
212 HCQ/azithromycin arm had a high rate of CT-scan lung injuries compatible with
213 COVID-19.

214 To support our results, we ensured that the difference accounting for the
215 HCQ/azithromycin arm was not associated with an earlier initiation of treatment (see
216 Table 1). Interestingly, despite the fact HCQ was initiated after a median delay of 9
217 days from onset of symptoms, period approaching the so-called “cytokine storm”
218 [7,8], we can hypothesize that HCQ might have played a role in the second stage of
219 the disease as an immune-modulator as previously described [9].

220 Mahevas *et al.* [4] studied patients hospitalized for COVID-19 as we did and showed
221 no evidence of clinical efficacy of HCQ alone (n=84) in a retrospective and
222 comparative study. However, we have no information if patients categorized as
223 control group received azithromycin or a symptomatic treatment. These results’
224 discrepancies in comparison to our findings should be discussed. First, we used a
225 combination therapy with HCQ plus azithromycin and second our patients were
226 considered to be treated efficiently only if they received a course of at least 48 hours
227 of this combination therapy. However, Magagnoli *et al.* [5] reported, in 368
228 hospitalized veterans with COVID-19, a higher death rate with HCQ treatment with or
229 without azithromycin. This study has numerous bias, including a higher
230 lymphocytopenia ($<500/\text{mm}^3$) and more comorbidities at baseline in the patients who
231 received HCQ, a population exclusively composed of male, including 66% of black

232 Americans. Also, the posology of HCQ is lacking and 31% had azithromycin in the
233 control group.

234 Our findings are all the more remarkable, considering that patients in the
235 HCQ/azithromycin group required significantly more oxygen ($p=0.005$) and had
236 higher CRP ($p=0.008$) at baseline, which is deemed to be a predictive factor of
237 severity in COVID-19 pneumonia [10]. Of note, in multivariate analysis our patients in
238 ICU had lower lymphocyte count and higher CRP level ($p=0.002$) as commonly
239 described [11].

240 Interestingly, patients who received azithromycin alone had a trend to a better
241 outcome than standard of care (multivariate analysis, $p=0.05$), in the limit of the
242 sample size ($n<30$). Azithromycin's potential antiviral activity is concordant with
243 previous *in vitro* studies regarding SARS-CoV-2 [12] or H1N1-pdm09 [13] and one
244 clinical randomized trial in the prevention of children respiratory infections [14]. As
245 azithromycin is commonly prescribed and authorized in ambulatory care, a study
246 conducted among general practitioners could be relevant to evaluate this single
247 therapy for the control of COVID-19 in outpatients.

248 In addition, our experience confirms the safety of HCQ, without any serious side
249 effect, as long as we take the necessary caution at the initiation of therapy and during
250 follow-up EKG. This low risk of toxicity using a conventional dose of HCQ associated
251 with azithromycin is concordant with Borba *et al.* [15].

252 Finally, we believe the combination using HCQ plus azithromycin is relatively cost-
253 effectiveness and makes it particularly attractive to better control the hospital
254 overflow during the pandemic.

255 However, our study has several limitations. First, it is a retrospective study with a
256 limited sample size (n=132), with a pre-established statement that considered HCQ
257 plus azithromycin had to be received for at least 48 hours to interpret its impact.
258 Second, groups were not balanced in terms of individuals notably because prior to
259 the 25th of march, HCQ was not authorized by the French Minister for Solidarity and
260 Health and drug was therefore out of stock. Third, we performed less frequently lung
261 CT-scans in the no-HCQ/azithromycin group, partly because CT-scans were not
262 recommended for COVID-19 at the beginning of the outbreak in our hospital (in early
263 March). Also, in our ICU critical care physicians do not systematically perform CT-
264 scans in intubated patients considering the higher risk of contamination from those
265 patients. Fourth, as we are facing a recent outbreak of COVID-19 in France where
266 knowledge and criteria of ICU transfer might have changed over time and considering
267 prolonged length of stay in ICU [16], the overall mortality might have been
268 underestimated, as (n=6/29) are still under mechanical ventilation assistance. Finally,
269 we can discuss our decision not to exclude patients receiving lopinavir from the
270 control group (n=14), however there is currently no solid data supporting its efficacy
271 against SARS-CoV-2 [17].

272 In conclusion, our study confirms already known risk factors for unfavorable
273 outcomes in COVID-19 hospitalized patients. Moreover, the present work highlights
274 the potential interest of the combination therapy of HCQ/azithromycin (≥ 48 hours'
275 intake) by limiting the rate of ICU transfer. A larger and randomized controlled study
276 is necessary to confirm those preliminary findings. Our data constitute a hope to
277 flatten the epidemic curve and prevent ICU overflow in case of a possible second
278 wave.

279

280 **Figure 1:** Flowchart of the studied population.

281

282 **Figure 2:** Outcome pictured depending on the received therapeutic strategy. HCQ =
283 hydroxychloroquine; AZI = azithromycin; SOC = standard of care which includes no
284 targeted therapy, or lopinavir/r or treatment received <48h until unfavorable outcome
285 (transfer to ICU or death).

286

287 **Figure 3:** Factors influencing the outcome in a multiple logistic regression using a
288 Pearson correlation test. Coefficient values can range from +1 to -1, where +1
289 indicates a perfect positive relationship, -1 indicates a perfect negative relationship,
290 and a 0 indicates no relationship exists. HCQ = hydroxychloroquine; AZI =
291 azithromycin; SOC = standard of care which includes no targeted therapy, or
292 lopinavir/r or treatment received <48h until unfavorable outcome (transfer to ICU or
293 death).

294

295 **Acknowledgments:**

296 First author (BD) would like to thank Azzam Saleh-Mghir for his unfailing support.

297

298 **Contributors' Statement:**

299 BD and PDT conceptualized and designed the study, carried out the initial analyses,
300 coordinated and supervised data collection, drafted the initial manuscript, and
301 reviewed and revised the manuscript.

302 BD, SB, TL, CP designed the data collection instruments, collected data and PDT
303 and AD reviewed and revised the manuscript.

304 All authors approved the final manuscript as submitted and agree to be accountable
305 for all aspects of the work in ensuring that questions related to the accuracy or
306 integrity of any part of the work are appropriately investigated and resolved.

307

308 **List of Collaborators**

309 **COVID-19 RPC Team*

310 Department of Intensive Care

311 Djillali Annane, MD, PhD (1,2,5)

312 [Xavier Ambrosi, MD \(4\)](#)

313 Suzanne Amthor, MD (1)

314 Rania Bounab, MD (1,2)

315 Ryme Chentouh, MD (1)

316 Bernard Clair, MD (1)

317 Abdallah Fayssoil, MD (1,2,5)

318 Diane Friedman, MD (1)

319 Nicholas Heming, MD, PhD (1,2,5)

320 Virginie Maxime, MD, (1)

321 Pierre Moine, MD, PhD (1,2,5)

322 Myriam Niel Duriez, MD (1)

323 David Orlikowski, MD, PhD (1,2,5,8)

324 Francesca Santi, MD (1,2)

325

326 Pharmacy

327 Frédérique Bouchand, PharmD (1)

328 Muriel Farcy-Afif, PharmD (1)

329 Hugues Michelon, PharmD, MSc (1)

330 Maryvonne Villart, PharmD (1)

331

332 Research Staff

333 Isabelle Bossard (8)

334 Tiphaine Barbarin Nicolier (1)

335 Stanislas Grassin Delyle, MCUPH (2,3,5)

336 Elodie Lamy (2,5)

337 Camille Roquencourt, MD (5)

338 Gabriel Saffroy (2)

339 Etienne Thevenot (5)

340

341 Department of Intensive Care Interns

342 Baptiste Abbar (1)
343 Steven Bennington (1)
344 Julia Dray (1)
345 Pierre Gay (1)
346 Elias Kochbati (1)
347 Majistor Luxman (1)
348 Myriam Moucachen (1)
349 Alice Pascault (1)
350 Juan Tamayo (1)
351 Justine Zini (1)
352

353 Department of Anesthesia, Perioperative Care, and Pain

354 Marie Boutros, MD (1)
355 Anne Lyse Bron, MD (11)
356 Denys Coester, MD (12)
357 Etienne Defouchecour, MD (11)
358 Brigitte Dosne Blachier, MD (11)
359 Léa Guichard, MD (1)
360 Damien Hamon Pietrin, MD, PhD (1)
361 Hakim Khiter, MD (1)
362 Valéria Martinez, MD, PhD (1,2,6)
363 Simone Meuleye, MD (1)
364 Suzanne Reysz, MD (1)
365 Sebastien Schitter, MD (1)
366 Chawki Trabelsi, MD (1)
367

368 Pediatric Critical Care Unit

369 Helge Amthor, MD, PhD (1,2,7)
370 Jean Bergounioux MD (1,2,5)
371 Maud Guillon, MD (1)
372 Amal Omar, MD (1)
373

374 Laboratory of Physiology

375 Frédéric Lofaso, MD, PhD (1,2,7,10)
376 Helene Prigent, MD, PhD (1,2,7,10)
377

378 Department of Rehabilitation and Physical Medicine

379 Djamel Bensmail, MD, PhD (1,2,7,10)
380 Pierre Denys, MD, PhD (1,2,7,10)
381 Charles Joussain, MD, PhD (1)
382 Lauren Kagane, MD (1)
383 Thibaut Lansaman, MD (1)
384 Hélène Le Liepvre, MD (1)
385 Antoine Leotard, MD, MS (1)
386 Jonathan Levy, MD, MS (1,2,7,10)
387 Claire Malot, MD (1)

388 Julie Paquereau, MD (1)

389 Celia Rech, MD (1)

390

391 Department of Rehabilitation Interns

392 Florence Angioni (1)

393 Elsa Chkron (1)

394 Céline Karabulut (1)

395 Jérôme Lemoine (1)

396 Noémie Trystram (1)

397 Julien Vibert (1)

398

399 Department of Infectious Diseases

400 Simon Bessis, MD (1,2)

401 Pascal Crenn, MD, PhD (1,2,7)

402 Benjamin Davido, MD, MS (1)

403 Aurélien Dinh, MD, MS (1,2)

404 Stéphanie Landowski, MD (1)

405 Hélène Mascitti, MD, MS (1)

406 Morgan Matt, MD (1,2)

407 Christian Perronne, MD, PhD (1,2)

408 Véronique Perronne, MD (1)

409 Soline Simeon, MD, MS (1)

410 Pierre de Truchis, MD, MS (1)

411

412 Department of Infectious Diseases Interns

413 Marc Hobeika (1)

414 Louis Jacob (1)

415 Nicolas Kiavue (1)

416 Aymeric Lanore (1)

417 Aurélie Le Gal (1)

418 Julia Nguyen Van Thang (1)

419

420 Department of Microbiology and Innovative Biomarkers Platform

421 Coralie Favier (1)

422 Jean Louis Gaillard, MD, PhD (1,2,5)

423 Elyanne Gault, MD, PhD (1,2,5)

424 Jean-Louis Herrmann, PharmD, PhD (1,2,5)

425 Christine Lawrence, PharmD (1)

426 Virginie Lebidois, PharmD (1)

427 Latifa Noussair, MD (1)

428 Martin Rottman, MD, PhD (1,2,5)

429 Anne-Laure Roux, PharmD, PhD (1,2,5)

430 Sophie Tocqueville (1)

431 Marie-Anne Welti, MD, PhD (1,2,5)

432 And the nonmedical staff of the Department

433

434 Department of Laboratory Medicine and Pharmacology

435 Jean Claude Alvarez, MD, PhD (1,2,5)
436 Mehdi Djebrani, PharmD (1)
437 Pierre-Alexandre Emmanuelli (1)
438 Firas Jabbour, PharmD (1)
439 Lotfi Lahjomri, MD (1)
440 Mathilde Parent, MD (1)
441 And the nonmedical staff of the Department
442

443 Department of Radiology

444 Amine Ammar, MD (1)
445 Najete Berradja, MD (1)
446 Robert-Yves Carlier, MD, MS (1,2,7,14)
447 Annaelle Chetrit, MD (1,2)
448 Caroline Diffre, MD (1,2)
449 Myriam Edjlali, MD, PhD (1,15)
450 Zaki El Baz, MD (1,14)
451 Adrien Felter, MD (1)
452 Catherine Girardot, MD (1,13)
453 Ahmed Mekki, MD, MS (1,2)
454 Dominique Mompont, MD (1)
455 Dominique Safa, MD (1)
456 Tristan Thiry, MD (1)
457

458 Department of Radiology Interns

459 Margot Armani (1)
460 Olivier de Barry (1)
461 Antoine Kirchner (1)
462 Jeffery Zhou (1)
463

464 Department of Forensic Medicine

465 Geoffroy Lorin de La Grandmaison MD, PhD (1)
466

467 Department of Forensic Medicine Intern

468 Kevin Mahe (1)
469

470 **Affiliations**

- 471 1. Hôpital Raymond Poincaré, GHU APHP, Université Paris Saclay, Garches, France
472 2. Faculté Simone Veil Santé, Université Versailles Saint Quentin en Yvelines, Université Paris
473 Saclay, Montigny-le-Bretonneux, France
474 3. Hôpital Foch, Suresnes, France
475 4. Centre Hospitalier Universitaire de Nantes, Nantes, France
476 5. Université de Versailles Saint-Quentin-en-Yvelines/INSERM, Laboratory of Infection &
477 Inflammation–U-1173, Montigny-le-Bretonneux, France
478 6. Université de Versailles Saint-Quentin-en-Yvelines/INSERM, Centre d’Evaluation et de
479 Traitement de la Douleur–U-987, Boulogne-Billancourt, France

- 480 7. Université de Versailles Saint-Quentin-en-Yvelines/INSERM, Handicap Neuromusculaire–U-
481 1179, Montigny-le-Bretonneux, France
- 482 8. Centre d’Investigation Clinique, Garches, France
- 483 9. Commissariat à l’Energie Atomique, CEA Paris Saclay, Gif-sur-Yvette, France
- 484 10. Fondation Garches, Garches, France
- 485 11. Clinique Jouvenet, Ramsay Santé, Paris, France
- 486 12. Clinique de la Muette, Ramsay Santé, Paris, France
- 487 13. Polyclinique Mantaise, Mantes-La-Jolie, France
- 488 14. Centre Hospitalier Intercommunal Poissy/Saint-Germain, GHT Yvelines Nord, Poissy, France
- 489 15. IMA-BRAIN/INSERM–UMR-1266, DHU-Neurovasc, Centre Hospitalier Sainte-Anne, Paris,
490 France
- 491

492 **References:**

- 493 [1] Gautret P, Lagier J-C, Parola P, Hoang VT, Meddeb L, Sevestre J, et al.
494 Clinical and microbiological effect of a combination of hydroxychloroquine and
495 azithromycin in 80 COVID-19 patients with at least a six-day follow up: A pilot
496 observational study. *Travel Med Infect Dis* 2020:101663.
497 doi:10.1016/j.tmaid.2020.101663.
- 498 [2] Gautret P, Lagier J-C, Parola P, Hoang VT, Meddeb L, Mailhe M, et al.
499 Hydroxychloroquine and azithromycin as a treatment of COVID-19: results of
500 an open-label non-randomized clinical trial. *Int J Antimicrob Agents*
501 2020:105949. doi:10.1016/j.ijantimicag.2020.105949.
- 502 [3] Million M, Lagier J-C, Gautret P, Colson P, Fournier P-E, Amrane S, et al. Early
503 treatment of 1061 COVID-19 patients with hydroxychloroquine and
504 azithromycin, Marseille, France. n.d.
- 505 [4] Mahevas M, Tran V-T, Roumier M, Chabrol A, Paule R, Guillaud C, et al. No
506 evidence of clinical efficacy of hydroxychloroquine in patients hospitalized for
507 COVID-19 infection with oxygen requirement: results of a study using routinely

- 508 collected data to emulate a target trial. MedRxiv 2020:2020.04.10.20060699.
509 doi:10.1101/2020.04.10.20060699.
- 510 [5] Magagnoli J, Narendran S, Pereira F, Cummings T, Hardin JW, Sutton SS, et
511 al. Outcomes of hydroxychloroquine usage in United States veterans
512 hospitalized with Covid-19. MedRxiv 2020:2020.04.16.20065920.
513 doi:10.1101/2020.04.16.20065920.
- 514 [6] Barbosa Esper R, Souza da Silva R, Teiichi Costa Oikawa F, Machado Castro
515 M, Razuk-Filho A, Benedito Batista Junior P, et al. Empirical treatment with
516 hydroxychloroquine and azithromycin for suspected cases of COVID-19
517 followed-up by telemedicine. n.d.
- 518 [7] Zhou F, Yu T, Du R, Fan G, Liu Y, Liu Z, et al. Clinical course and risk factors
519 for mortality of adult inpatients with COVID-19 in Wuhan, China: a retrospective
520 cohort study. Lancet (London, England) 2020;395:1054–62.
521 doi:10.1016/S0140-6736(20)30566-3.
- 522 [8] Huang C, Wang Y, Li X, Ren L, Zhao J, Hu Y, et al. Clinical features of patients
523 infected with 2019 novel coronavirus in Wuhan, China. Lancet (London,
524 England) 2020;395:497–506. doi:10.1016/S0140-6736(20)30183-5.
- 525 [9] Zhao M. Cytokine storm and immunomodulatory therapy in COVID-19: Role of
526 chloroquine and anti-IL-6 monoclonal antibodies. Int J Antimicrob Agents
527 2020:105982. doi:10.1016/j.ijantimicag.2020.105982.
- 528 [10] E T, I N-S, I E, E K, TN S, M P, et al. Hematological Findings and
529 Complications of COVID-19. Am J Hematol 2020. doi:10.1002/AJH.25829.
- 530 [11] Tan L, Wang Q, Zhang D, Ding J, Huang Q, Tang Y-Q, et al. Lymphopenia

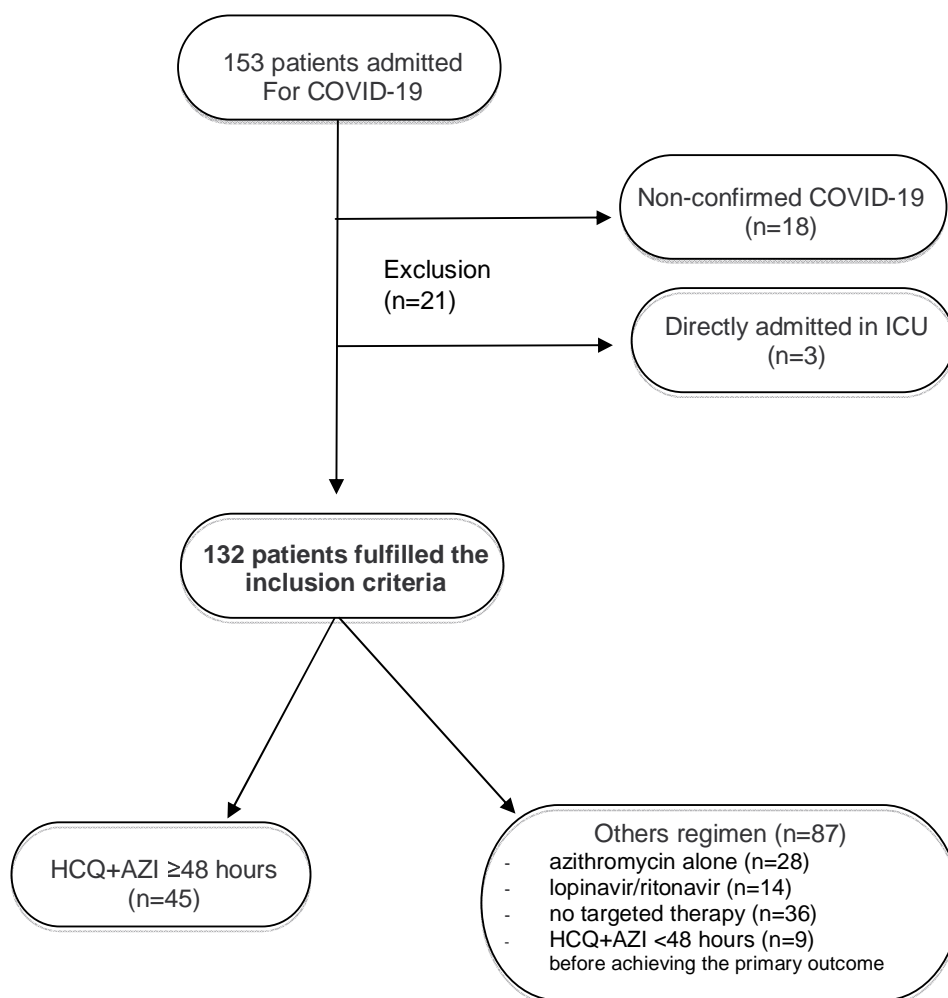
- 531 predicts disease severity of COVID-19: a descriptive and predictive study.
532 Signal Transduct Target Ther 2020;5:33. doi:10.1038/s41392-020-0148-4.
- 533 [12] Touret F, Gilles M, Barral K, Nougairède A, Decroly E, Lamballerie X de, et al.
534 In vitro screening of a FDA approved chemical library reveals potential
535 inhibitors of SARS-CoV-2 replication. BioRxiv 2020:2020.04.03.023846.
536 doi:10.1101/2020.04.03.023846.
- 537 [13] DH T, R S, T H, S S, Y N, A S, et al. Azithromycin, a 15-membered Macrolide
538 Antibiotic, Inhibits Influenza A(H1N1)pdm09 Virus Infection by Interfering With
539 Virus Internalization Process. J Antibiot (Tokyo) 2019;72. doi:10.1038/S41429-
540 019-0204-X.
- 541 [14] LB B, TW G, DT M, S B, A B, AM F, et al. Early Administration of Azithromycin
542 and Prevention of Severe Lower Respiratory Tract Illnesses in Preschool
543 Children With a History of Such Illnesses: A Randomized Clinical Trial. JAMA
544 2015;314. doi:10.1001/JAMA.2015.13896.
- 545 [15] Borba MGS, Val FFA, Sampaio VS, Alexandre MAA, Melo GC, Brito M, et al.
546 Effect of High vs Low Doses of Chloroquine Diphosphate as Adjunctive
547 Therapy for Patients Hospitalized With Severe Acute Respiratory Syndrome
548 Coronavirus 2 (SARS-CoV-2) Infection. JAMA Netw Open 2020;3:e208857.
549 doi:10.1001/jamanetworkopen.2020.8857.
- 550 [16] Guan W, Ni Z, Hu Y, Liang W, Ou C, He J, et al. Clinical Characteristics of
551 Coronavirus Disease 2019 in China. N Engl J Med 2020;382:1708–20.
552 doi:10.1056/NEJMoa2002032.
- 553 [17] Cao B, Wang Y, Wen D, Liu W, Wang J, Fan G, et al. A Trial of Lopinavir–

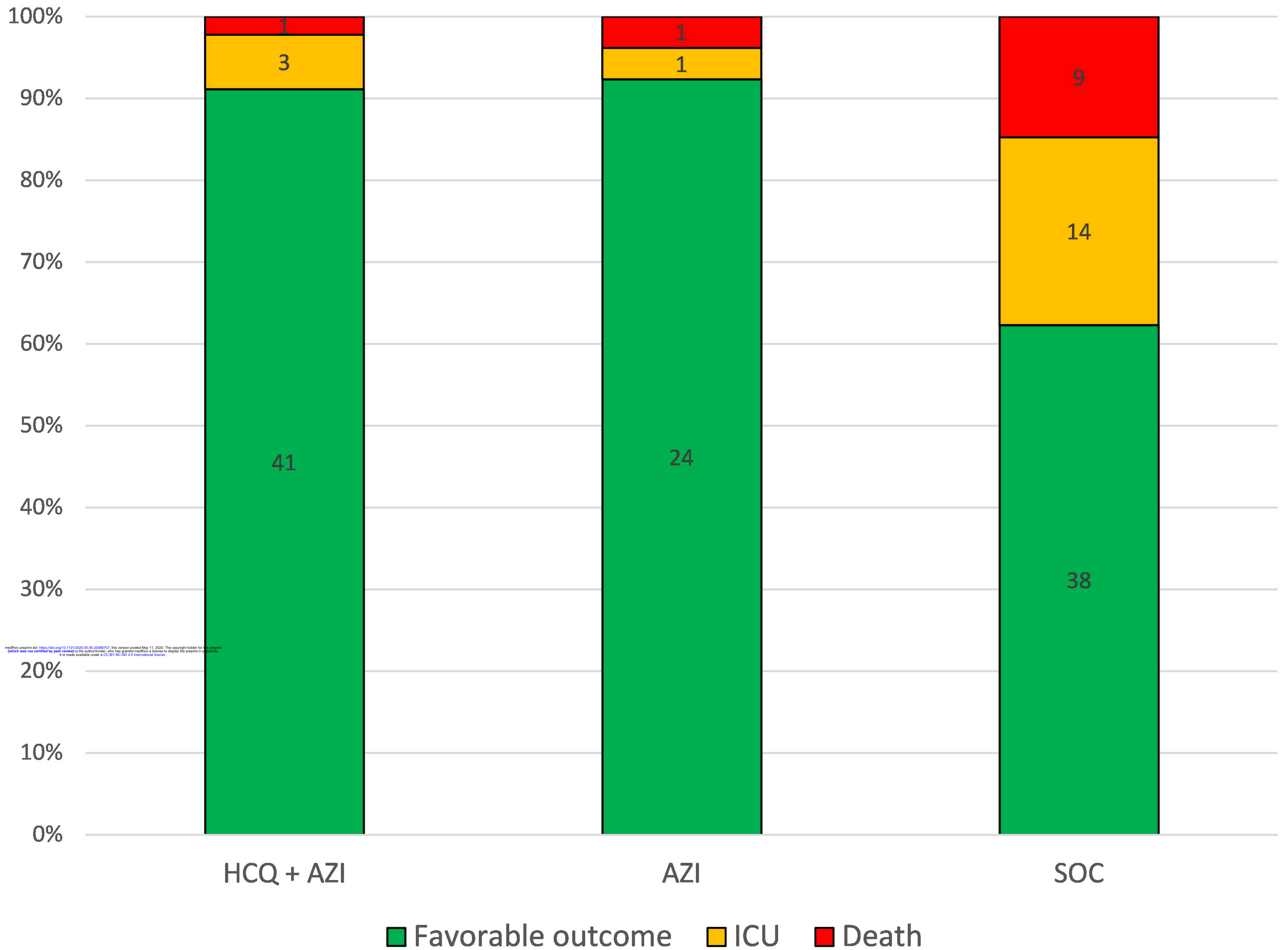
554 Ritonavir in Adults Hospitalized with Severe Covid-19. N Engl J Med

555 2020:NEJMoa2001282. doi:10.1056/NEJMoa2001282.

556

557





medRxiv preprint doi: <https://doi.org/10.1101/2020.05.05.20088757>; this version posted May 11, 2020. The copyright holder for this preprint (which was not certified by peer review) is the author/funder, who has granted medRxiv a license to display the preprint in perpetuity. It is made available under a [CC-BY-NC 4.0 International license](https://creativecommons.org/licenses/by-nc/4.0/).

Table 1: Demographic and clinical characteristics at baseline

Variables	HCQ+AZI ≥ 48h (n=45)	Others regimen* (n=87)	p-value (α=0.05)
Demographic data			
Age, mean ± SD	58 ± 17	59 ± 16	0.74
Male sex – no (%)	31 (68.9)	55 (63.2)	0.65
Patients with a Charlson Comorbidity Index (CCI) ≥ 5**, no (%)	7 (15.5)	23 (25.9)	0.23
Comorbidities - no (%)			
- Cardiovascular disease (incl. HBP)	17 (37.8)	40 (46.0)	0.47
- Chronic respiratory disease (incl. COPD)	8 (17.8)	14 (16.1)	0.99
- Diabetes	7 (15.5)	18 (20.7)	0.63
- Chronic kidney failure	1 (2.2)	3 (3.4)	0.88
- Chronic liver disease (≥ Child-Pugh B)	0	1 (1.2)	0.73
- Immunodepression	4 (8.9)	7 (8.0)	0.86
- Obesity (BMI > 30 kg/m ²)	8 (17.8)	6 (6.9)	0.1
COVID-19 data			
Median delay from onset of symptoms until admission, (IQR) in days	8 (6-11)	7 (4-8)	0.005
Median delay between initiation of therapeutic strategy and onset of symptoms, (IQR) in days	9 (6-12)	7 (6-9)	0.04
PCR COVID-19 positive – no (%)	43 (95.5)	83 (95.5)	0.99
Oxygen flow at admission, median (IQR) – L/min	2 (2-4)	2 (0-3)	0.001
Thoracic imaging			
Patients with a lung CT scan – no (%)	44 (97.8)	59 (67.8)	0.0002
Normal CT scan – no (%)	1 (2.3)	3 (5.1)	0.83
Limited extend on CT scan <10%	7 (15.9)	9 (15.3)	0.85
Mild extend on CT scan 10-25%	11 (25)	16 (27.1)	0.99
Moderate extend on CT scan 25-50%	19 (43.2)	24 (40.7)	0.96
Severe extend on CT scan 50-75%	6 (13.7)	6 (10.2)	0.81
Critical extend on CT scan >75%	0	1 (1.7)	0.88
Biological tests			
Median lymphocyte count (IQR) - /mm ³	920 (710-1160)	1065 (745-1530)	0.16
Median C-reactive protein (CRP) (IQR) – mg/L	90.5 (55-152)	62 (14-106)	0.008

*Others regimen include azithromycin (n=28), lopinavir/ritonavir (n=14) or no targeted therapy (n=36) and 9 individuals treated with HCQ plus azithromycin for less than 48 hours before transfer to ICU and/or death

**Patients with a CCI scores ≥5 are considered as severe and fragile.

Abbreviations: BMI, body mass index; COPD, chronic obstructive pulmonary disease; HBP, high blood pressure

Table 2: Risk-factors and clinical outcome of COVID-19 hospitalized patients. Variables are compared using Chi-square test with Yates' correction. Odds ratio (OR) were obtained using Baptista-Pikes method. Multiple logistic regression was performed to calculate a r correlation factor using Pearson test.

Variables	Favorable outcome n (%)	ICU or death n (%)	Univariate analysis		Multivariate analysis	
			OR (95% CI) for favorable outcome	p-value	r (95% CI) for favorable outcome	p-value
Baseline characteristics						
Age, mean ± SD	57 ± 1.6	64 ± 2.8	-	0.05	-0.32 to 0.011	0.067
Gender (% male)	68 (66)	18 (62)	-	0.82	-	-
Median delay between onset of symptoms and admission, (IQR) in days	7 (4-10)	6 (5-9)	-	0.31	-0.11 to 0.22	0.52
Median delay between initiation of therapeutics and onset of symptoms, (IQR) in days	8.5 (6-10)	7 (6-10)	-	0.29	-0.09 to 0.3	0.27
Median oxygen flow at admission (IQR) - L/min	2 (0-3)	3 (2-4)	-	0.003	-0.48 to -0.17	<0.0001
CT scan lung affected > 50%						
Yes	10 (76.9)	3 (23.1)				
No	76 (84.5)	14 (15.5)	1.62 (0.43 to 6)	0.78	-	-
Median lymphocyte count at admission (IQR) - /mm ³	1110 (780-1450)	810 (700-955)	-	0.0005	0.1 to 0.42	0.002
Median CRP count at admission (IQR) - mg/L	62 (16-112.5)	112 (82-161.5)	-	0.001	-0.42 to -0.1	0.002
Charlson Comorbidity Index (CCI)**						
CCI <5	81 (79.4)	21 (20.6)				
CCI ≥5	22 (73.3)	8 (26.7)	0.7 (0.27 to 1.82)	0.65	-	-
Obesity (BMI > 30 kg/m ²)						
Yes	13 (92.8)	1 (7.2)				
No	90 (76.3)	28 (23.7)	0.25 (0.02 to 1.46)	0.28	-0.04 to 0.29	0.15
Therapeutic data						
HCQ + azithromycin ≥ 48 hours	41 (91.1)	4 (8.9)	6.2 (2.1 to 17.6)	0.002	0.06 to 0.38	0.009
Azithromycin ≥ 48 hours	24 (92.3)	2 (7.7)	7.2 (1.76 to 33.0)	0.01	-0.0001 to 0.33	0.05
Standard of care*	38 (62.3)	23 (37.7)	1	-	1	-
Total	103	29				

*standard of care includes no targeted therapy, or lopinavir/r or treatment received <48h until unfavorable outcome (transfer to ICU or death)

** Patients with CCI scores ≥5 are considered as severe and fragile

