

Title: Laboratory findings associated with mechanical ventilation requirement and mortality among hospitalized individuals with Covid-19 in Eastern Massachusetts

Running Title: COVID-19 outcomes in Eastern Massachusetts

Authors: Victor M. Castro MS (1, 2) and Roy H. Perlis MD, MSc (1)*

Affiliations:

1. Center for Quantitative Health, Division of Clinical Research, Massachusetts General Hospital, 185 Cambridge Street, Boston, MA 02114, USA
2. Research Information Science and Computing (RISC), Mass General Brigham. 399 Revolution Drive, Somerville, MA 02145, USA

Correspondence:

Roy H. Perlis, MD MSc
rperlis@mgh.harvard.edu
Massachusetts General Hospital
185 Cambridge Street, 6th Floor
Boston, MA 02114

Word count: 1,892

Key Points

Question: What are the characteristics and outcomes of individuals hospitalized with Covid-19 in Eastern Massachusetts through April 28, 2020, as determined from electronic health records surveillance?

Findings: Across 2 academic medical centers and 3 affiliated community hospitals, among 1,898 hospitalized individuals who tested positive for Covid-19, 481 (25.3%) required mechanical ventilation and 241 (12.7%) died. Markers of red cell immaturity and poor renal function, as well as older age, were associated with mortality. Markers of tissue injury, and male sex, were associated with risk for mechanical ventilation.

Meaning: Simple prediction models incorporating admission laboratory studies may assist in risk stratification among hospitalized COVID-19 patients.

Abstract

Importance: The Covid-19 pandemic has placed unprecedented stress on health systems across the world, and reliable estimates of risk for adverse outcomes are needed.

Objective: To quantify admission laboratory features associated with mechanical ventilation and mortality risk across 5 Eastern Massachusetts hospitals.

Design: Retrospective cohort study using narrative clinical notes and laboratory values through April 28, 2020.

Setting: Emergency department and inpatient settings from 2 academic medical centers and 3 community hospitals.

Participants: All individuals with hospital admission and documented coronavirus testing across these 5 hospitals.

Main Outcome or Measure: Mechanical ventilation, as documented in narrative notes.

Results: Among 1,898 hospitalized Covid-19-positive individuals through April 28, 2020, 481 (25.3%) required mechanical ventilation and 241 (12.7%) died. L1-regression models developed in 3 of these hospitals yielded area under ROC curve (AUC) of 0.837 for in-hospital mortality and 0.839 for mechanical ventilation in the other 2 hospitals. In total, 66.7% of deaths occurred in the highest-risk mortality quintile.

Conclusions and Relevance: Specific admission laboratory studies in concert with sociodemographic features facilitate risk stratification among individuals hospitalized for COVID-19.

Funding: none.

Trial Registration: None

Introduction

With the rapid spread of the severe acute respiratory syndrome coronavirus-2 (SARS-CoV-2), efforts to predict clinical outcomes and stratify risk have taken on greater urgency as a means of allocating resources and targeting interventions. A recent report of 1099 admitted individuals from China found that 5.0% required intensive care unit (ICU) transfer, and 2.3% required mechanical ventilation¹. In Lombardy, Italy, around 16% of test-positive individuals required ICU admission². In the United States, characteristics of admitted patients may differ somewhat. A recent case series from the Seattle area described 24 ICU-admitted patients, of whom 75% required mechanical ventilation³. In one of the largest U.S. studies to date, among a series of 2634 hospitalized patients in New York who died or were discharged, 12.2% had required mechanical ventilation⁴.

Given the constrained resources for treatment of COVID-19, particularly with regard to mechanical ventilation, simple approaches to stratifying morbidity and mortality risk at time of hospitalization are needed. In cohorts ranging from 100-200 patients, multiple laboratory studies have been associated with mortality risk, including elevated ferritin, troponin, and C-reactive peptide (CRP)⁵, elevated d-dimer⁶, and low eosinophil count.⁷ A recent large cohort study across 169 hospitals identified cardiovascular disease as a major predictor of in-hospital mortality⁸.

Electronic health records may facilitate rapid and efficient investigation of clinical cohorts, and form the basis of consortia efforts to address COVID-19 at scale⁹. Here, we examined records from 2 academic medical centers and 3 affiliated community hospitals in Eastern Massachusetts. As coded clinical data lags by 4-6 weeks or more, and may not be complete

until after discharge, we relied on narrative clinical notes and laboratory studies, available with less than 24-hour lag, to determine features of admitted patients. We applied data from 3 hospitals to generate simple base-case models to estimate risk of need for mechanical ventilation, and risk for death, and validated these results in another academic medical center and a community hospital, as a starting point for generalizable efforts at clinical risk stratification¹⁰.

Method

Subjects

The full cohort included all individuals age 18 or older hospitalized at any of the 2 academic medical centers and 3 community affiliate hospitals between March 1, 2020 and April 28, 2020, with documented COVID+ test result at any point in this period. For all of these individuals, any available narrative clinical notes from the emergency department or inpatient setting were extracted from the Partners Research Patient Data Registry (RPDR)¹¹ and used to generate an i2b2 datamart.¹² Data were augmented with age, sex, race, and ethnicity from the same source. The enterprise laboratory feed was used to extract coronavirus test order and results (LOINC:94309-2), as well as additional laboratory values (Supplemental Table 1). Laboratory values available in at least 80% of individuals were included in subsequent analysis as continuous measures, after Winsorization at the 99th percentile but otherwise without transformation, along with laboratory-specific high and low flags. As an aggregate measure of comorbidity, age-adjusted Charlson comorbidity index was calculated using coded ICD9 and 10 diagnostic codes drawn from the EHR, but by necessity lagging admissions by 4-6 weeks, as previously described¹³.

The study protocol was approved by the Partners HealthCare Human Research Committee. No participant contact was required in this study which relied on secondary use of data produced by routine clinical care, allowing waiver of requirement for informed consent as detailed by 45 CFR 46.116.

Hospital Course Characterization from Narrative Clinical Notes

As coded clinical data (e.g., ICD-10 diagnoses or CPT codes) is not available in real time in the RPDR, we developed and validated simple string-based classifiers to identify mechanical ventilation based on narrative clinical notes. A preliminary list of tokens was curated by one of us (RP) based on manual chart review; the strings resulting from these queries were then further reviewed in context to determine specificity, and iteratively revised. We identified date of emergency department evaluation, inpatient hospitalization, ventilation if present, and discharge if present on the basis of index note of that type.

Study Design and Analysis

We included all newly-hospitalized individuals undergoing Covid-19 testing during the study period. The two primary outcomes of interest were mechanical ventilation and overall mortality. (In the former case, mortality was also considered an outcome, because it would otherwise represent a competing risk.) Beyond descriptive analysis, we report appropriate univariate comparisons (i.e., chi square test for binary variables, Student's t-test for continuous measures) followed by L1-penalized regression, or the least absolute shrinkage and selection operator (Lasso)¹⁴, to identify a parsimonious model with

sociodemographic features and laboratory values as candidate predictors. Lasso was applied to all participants with complete laboratory studies in 1 academic medical center and 2 community hospitals, and the performance characterized in an additional academic medical center and community hospital. Model fitting used all individuals in the training set, with median imputation of missing data; testing utilized all participants with complete data. Model performance was characterized using standard metrics of discrimination and calibration, focusing on the 5 quintiles of risk determined in the training data set.

Regression models offer advantages in interpretability but fail to consider censoring or competing risk. Therefore, to better characterize model performance in the testing set, we utilized survival analysis, right-censoring at time of hospital discharge or end of available data (4/28/20), presenting Kaplan-Meier curves comparing risk quintile groups. All analyses utilized R 3.6.2¹⁵. STROBE reporting guidelines for cohort studies were applied.

Results

The 1,898 individuals hospitalized with Covid-19 through April 28, 2020, including 1137 (59.9%) at academic medical centers and 761 (40.1%) at community hospitals, were 54.5% male, 47.4% white, and 6.7% Hispanic; mean age was 62.8 years (Table 1). In all, 481 (25.3%) required mechanical ventilation and 241 (12.7%) died. Median time of follow-up was 6 days (IQR, 3-9). Laboratory values are summarized in Supplemental Table 2.

We utilized L1-penalized regression to train a prediction model based on admission characteristics and laboratory values in one academic medical center and 3 community hospitals (Table 2). For overall mortality notable features associated with elevated risk

included red blood cell (RBC) indices (presence of nucleated RBC's, and RBC distribution width (RDW)) as well as markers of diminished renal function (Table 2A). For mechanical ventilation or mortality (vent+mortality), beyond male gender and elements of the chemistry-20 panel, notable laboratory flags associated with risk include elevation in high-sensitivity cardiac troponin, creatine kinase, and procalcitonin (Table 2B).

In an independent testing set including a second academic medical center and a second community hospital, the mortality model yielded AUC of 0.827 (Figure 1A), with sensitivity of 82.2% and specificity of 66.7% at the top risk quintile (positive predictive value is 92.6%, while negative predictive value is 42.4%). For the vent+mortality model, AUC is 0.823 (Figure 1B); 89.3% and specificity of 56.0% (positive predictive value is 77.9%, while negative predictive value is 75.0%). Both models exhibit substantial lift, with the highest-risk quintile markedly enriched for adverse outcomes (Figure 2A and B) - as specificity results indicate, 66.7% of mortality is observed in the highest-risk quintile, and 56% of vent+mortality outcomes occur in the highest risk quintile.

For illustrative purposes, we also examined risk quintile in Kaplan-Meier survival curves, with curves censored at time of hospital discharge, end of follow-up, or 15 days, whichever came first. Figure 3 illustrates mortality (A), or vent+mortality (B), by predicted risk quintile. Quintiles were significantly associated with predicted outcome by log-rank test ($p < 0.0001$ for each).

Discussion

In this study of 1,898 individuals with positive COVID-19 status hospitalized at academic medical centers and community hospitals in Eastern Massachusetts through April 28, 2020, 25.3% required mechanical ventilation and 12.7% died. Measures of renal function and red cell immaturity, along with age, were associated with greater mortality risk, confirming two non-pulmonary markers associated with COVID-19 severity. Measures of cardiac or other tissue injury (creatinine kinase, troponin T) and systemic infection (procalcitonin), along with male sex, were associated with greater likelihood of requiring mechanical ventilation.

Notably, even though the latter model overlaps with the former by design in order to avoid the problem of competing risk, inclusion of mechanical ventilation still yields a substantially different model.

In general, discrimination of both models appears promising, identifying a high-risk quintile with reasonable sensitivity and specificity. Survival curves demonstrate the limitations of these models, with deteriorating discrimination beyond day 10. As such, predictions may be most useful during the initial week of hospitalization; a useful next-step study could examine whether re-running models with additional laboratory studies, or incorporating other biomarkers, can improve subsequent prediction.

Our results are consistent with a recently-reported cohort of 8910 COVID-19 patients, in which cardiovascular disease was associated with marked elevation in mortality⁸, as well as a smaller study associating renal involvement with mortality¹⁶. Multiple smaller cohorts have also reported laboratory features associated with morbidity and mortality among hospitalized COVID-19 patients. For example, a retrospective cohort study from Wuhan in 191 hospitalized patients found older age and greater d-dimer value at admission were associated with risk of death⁶. Among 95 fatal cases of COVID-19, low eosinophil count at

admission was also common.⁷ Ferritin also associated with mortality in a retrospective cohort study of 120 patients from Wuhan⁵, along with troponin and CRP.

In developing these simple regression-based prediction models, we were mindful of the recent frameworks for¹⁰ and criticisms of¹⁷ such models - particularly the recognition that poorly validated or calibrated models may cause more harm than good. Initial models are likely optimistic (i.e., overfit to data) and biased (i.e., by nonrepresentative samples), with a lack of transparency¹⁷. On the other hand, strategies to allow risk stratification are particularly necessary in an environment of constrained resources. As such, we report these results in the hope they will provide simple base-case models for others to improve upon. Undoubtedly application of artificial intelligence pixie dust will yield further improvement in model fit, but whether the degree of improvement balances a diminution of interpretability will merit careful consideration.

We note multiple limitations that likely diminish model performance. First, the lag in availability of coded clinical data precludes inclusion of clinical features useful for prediction. Reliance on a manually-curated definition of ventilator use likely diminishes model performance. Our modeling methodology (i.e., reliance on logistic regression) does not fully account for censoring; while extensions of Lasso to Cox regression exist, inpatient clinical data typically violates proportional hazards assumptions, prompting our hybrid approach (i.e., model development using regression, and characterization using survival curves.) Survival analyses do suggest that, while this approach may not yield optimal models for lower-risk individuals, incorporation of censoring still results in discriminativeness for the highest-risk quintile. Finally, many laboratory values are highly non-normal; we elected to incorporate standard high/low flags plus continuous measures,

rather than adopting specific transformations for each value which would risk overfitting or diminish generalizability but likely extract additional information. Efforts to aggregate laboratory data across international health systems will provide an opportunity to explore such transformations if individual-level data becomes accessible⁹.

Despite these limitations, our analyses suggest the utility of laboratory values in combination with sociodemographic features in identifying individuals at particularly high risk for more severe hospital course. These admission models provide an opportunity for comparison as more sophisticated models are developed, particularly those incorporating additional physiologic measures or other biomarkers. As hospital resources remain constrained, the ability to target resources to highest-risk individuals is likely to be valuable, and expansion and refinement of risk models may represent a useful approach to optimizing care.

Acknowledgements

The authors would like to thank the entire RPDR team for their support in making up-to-date EHR data available for this research.

Dr. Perlis had full access to all the data in the study and takes responsibility for the integrity of the data and the accuracy of the data analysis.

No funding was received for this study. Dr. Perlis has received consulting fees from Burrage Capital, Genomind, RID Ventures, and Takeda. He holds equity in Outermost Therapeutics and Psy Therapeutics. Mr. Castro reports no conflict of interest.

Role of the Funding Source

No funding source contributed to any aspect of study design, data collection, data analysis, or data interpretation. The corresponding author (RHP) had full access to all the data in the study. All authors shared the final responsibility for the decision to submit for publication.

References

1. Guan W-J, Ni Z-Y, Hu Y, et al. Clinical Characteristics of Coronavirus Disease 2019 in China. *N Engl J Med*. Published online February 28, 2020. doi:10.1056/NEJMoa2002032
2. Grasselli G, Pesenti A, Cecconi M. Critical Care Utilization for the COVID-19 Outbreak in Lombardy, Italy: Early Experience and Forecast During an Emergency Response. *JAMA*. Published online March 13, 2020. doi:10.1001/jama.2020.4031
3. Bhatraju PK, Ghassemieh BJ, Nichols M, et al. Covid-19 in Critically Ill Patients in the Seattle Region - Case Series. *N Engl J Med*. Published online March 30, 2020. doi:10.1056/NEJMoa2004500
4. Richardson S, Hirsch JS, Narasimhan M, et al. Presenting Characteristics, Comorbidities, and Outcomes Among 5700 Patients Hospitalized With COVID-19 in the New York City Area. *JAMA*. Published online April 22, 2020. doi:10.1001/jama.2020.6775
5. Ruan Q, Yang K, Wang W, Jiang L, Song J. Clinical predictors of mortality due to COVID-19 based on an analysis of data of 150 patients from Wuhan, China. *Intensive Care Med*. Published online March 3, 2020. doi:10.1007/s00134-020-05991-x
6. Zhou F, Yu T, Du R, et al. Clinical course and risk factors for mortality of adult inpatients with COVID-19 in Wuhan, China: a retrospective cohort study. *Lancet Lond Engl*. 2020;395(10229):1054-1062. doi:10.1016/S0140-6736(20)30566-3
7. Du Y, Tu L, Zhu P, et al. Clinical Features of 85 Fatal Cases of COVID-19 from Wuhan: A Retrospective Observational Study. *Am J Respir Crit Care Med*. Published online April 3, 2020. doi:10.1164/rccm.202003-0543OC
8. Mehra MR, Desai SS, Kuy S, Henry TD, Patel AN. Cardiovascular Disease, Drug Therapy, and Mortality in Covid-19. *N Engl J Med*. Published online May 1, 2020. doi:10.1056/NEJMoa2007621
9. Consortium for Clinical Characterization of Covid19 by EHR (4CE). i2b2 tranSMART Foundation. Published April 5, 2020. Accessed April 19, 2020. <https://transmartfoundation.org/covid-19-community-project/>
10. Pencina MJ, Goldstein BA, D'Agostino RB. Prediction Models - Development, Evaluation, and Clinical Application. *N Engl J Med*. 2020;382(17):1583-1586. doi:10.1056/NEJMp2000589
11. Nalichowski R, Keogh D, Chueh HC, Murphy SN. Calculating the benefits of a Research Patient Data Repository. *AMIA Annu Symp Proc*. 2006;2006:1044.
12. Murphy SN, Weber G, Mendis M, et al. Serving the enterprise and beyond with informatics for integrating biology and the bedside (i2b2). *J Am Med Inform Assoc JAMIA*. 2010;17(2):124-130. doi:10.1136/jamia.2009.000893

13. Charlson M, Szatrowski TP, Peterson J, Gold J. Validation of a combined comorbidity index. *J Clin Epidemiol*. 1994;47(11):1245-1251.
14. Tibshirani R. Regression Shrinkage and Selection via the Lasso. *J R Stat Soc Ser B Methodol*. 1996;58(1):267-288.
15. R Core Team. *R: A Language and Environment for Statistical Computing*. R Foundation for Statistical Computing; 2019. www.R-project.org
16. Pei G, Zhang Z, Peng J, et al. Renal Involvement and Early Prognosis in Patients with COVID-19 Pneumonia. *J Am Soc Nephrol JASN*. Published online April 28, 2020. doi:10.1681/ASN.2020030276
17. Wynants L, Van Calster B, Bonten MMJ, et al. Prediction models for diagnosis and prognosis of covid-19 infection: systematic review and critical appraisal. *BMJ*. 2020;369:m1328. doi:10.1136/bmj.m1328

Table 1. Sociodemographic characteristics of training and test sets

	Training (N=1441)	Test (N=457)	Total (N=1898)	p value
Hospital type				0.075
Academic medical centers	847 (58.8%)	290 (63.5%)	1137 (59.9%)	
Community hospitals	594 (41.2%)	167 (36.5%)	761 (40.1%)	
Male gender	812 (56.3%)	223 (48.8%)	1035 (54.5%)	0.005
Age group				0.002
< 30	51 (3.5%)	12 (2.6%)	63 (3.3%)	
30-39	129 (9.0%)	25 (5.5%)	154 (8.1%)	
40-49	187 (13.0%)	35 (7.7%)	222 (11.7%)	
50-59	259 (18.0%)	89 (19.5%)	348 (18.3%)	
60-69	261 (18.1%)	107 (23.4%)	368 (19.4%)	
70-79	241 (16.7%)	84 (18.4%)	325 (17.1%)	
80+	313 (21.7%)	105 (23.0%)	418 (22.0%)	
Race				< 0.001
Asian	57 (4.0%)	17 (3.7%)	74 (3.9%)	
Black	168 (11.7%)	164 (35.9%)	332 (17.5%)	
Other	280 (19.4%)	56 (12.3%)	336 (17.7%)	
Unknown	196 (13.6%)	61 (13.3%)	257 (13.5%)	
White	740 (51.4%)	159 (34.8%)	899 (47.4%)	
Hispanic ethnicity	89 (6.2%)	39 (8.5%)	128 (6.7%)	0.080
Charlson comorbidity index age-adjusted, mean (sd)	5.28 (4.94)	5.89 (5.06)	5.427 (4.975)	0.022
Mechanical ventilation	350 (24.3%)	131 (28.7%)	481 (25.3%)	0.061
Death	166 (11.5%)	75 (16.4%)	241 (12.7%)	0.006
Mechanical ventilation or death	444 (30.8%)	166 (36.3%)	610 (32.1%)	0.028

Table 2. Model Coefficients

A. Mortality model feature coefficients

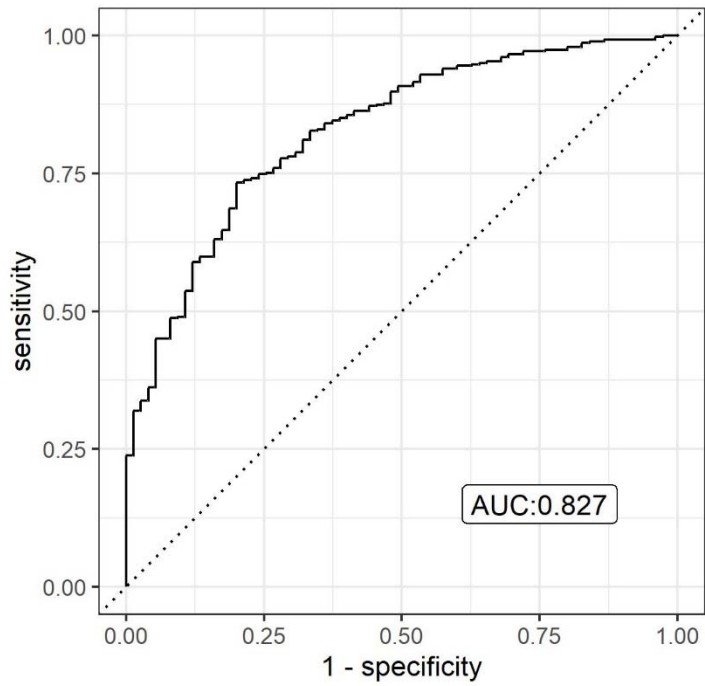
feature	coefficient
(Intercept)	-5.6916
CBC - NRBC (H)	0.5370
Chem20 - BUN (H)	0.3659
Chem20 - CRE (H)	0.1491
Chem20 - ANION (H)	0.1245
CBC - PLT (L)	0.0836
CBC - RDW (continuous)	0.0607
Age (continuous)	0.0343
CBC - MCV (H)	0.0334
TROPTHS (H)	0.0299
Charlson Comorbidity Index	0.0170
CBC - WBC (continuous)	0.0051
Chem20 - BUN (continuous)	0.0014
CRP (continuous)	0.0007
Chem20 - LDH (continuous)	0.0006
Chem20 - GFR (continuous)	-0.0050

B. Mechanical ventilation or mortality model feature coefficients

feature	coefficient
(Intercept)	-1.7760
Chem20 - ANION (H)	0.3647
Chem20 - TP (L)	0.2954
Chem20 - SGOT (H)	0.2576
TROPTHS (H)	0.2154
CBC - PLT (L)	0.2034
Chem20 - BUN (H)	0.2019
CPK (H)	0.1335
Chem20 - GLU (H)	0.1257
Male gender	0.1163
Chem20 - GFR (L)	0.0995
PRCCITON (H)	0.0772
Chem20 - CRE (H)	0.0450
Chem20 - K (continuous)	0.0241
Charlson Comorbidity Index	0.0072
CRP (continuous)	0.0055
Chem20 - LDH (continuous)	0.0023
CBC - WBC (H)	0.0023
TROPTHS (continuous)	0.0005
Age (continuous)	0.0002
Chem20 - GLU (continuous)	0.0002
Chem20 - GFR (continuous)	-0.0017
Chem20 - CA (continuous)	-0.0860
Chem20 - ALB (continuous)	-0.1071

Figure 1. ROC Curves from test set

A. Mortality ROC



B. Mortality or mechanical ventilation ROC

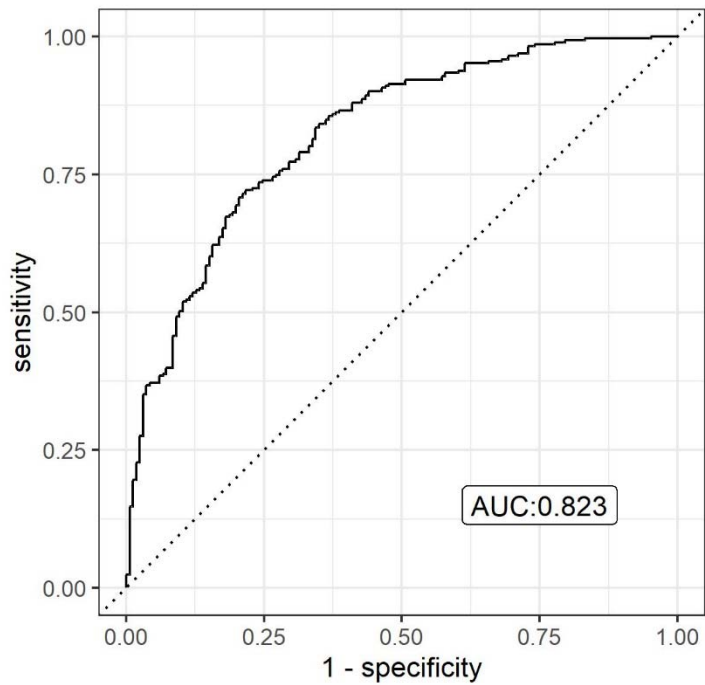
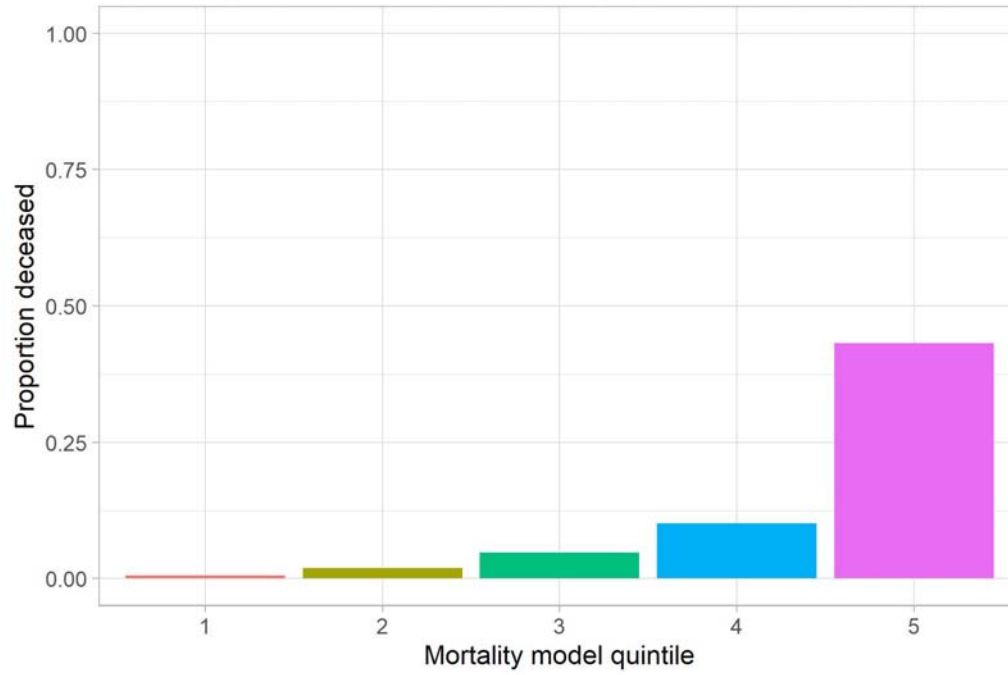


Figure 2. Calibration

A. Proportion of patients who died by model prediction quintiles



B. Proportion of patients with mechanical ventilation or who died by model prediction quintiles

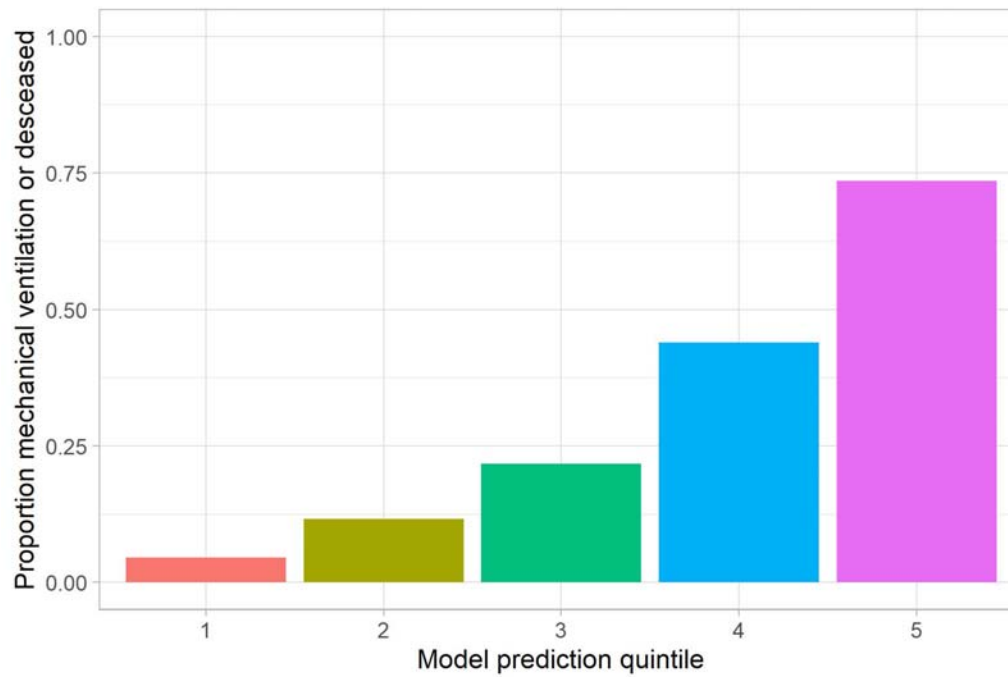
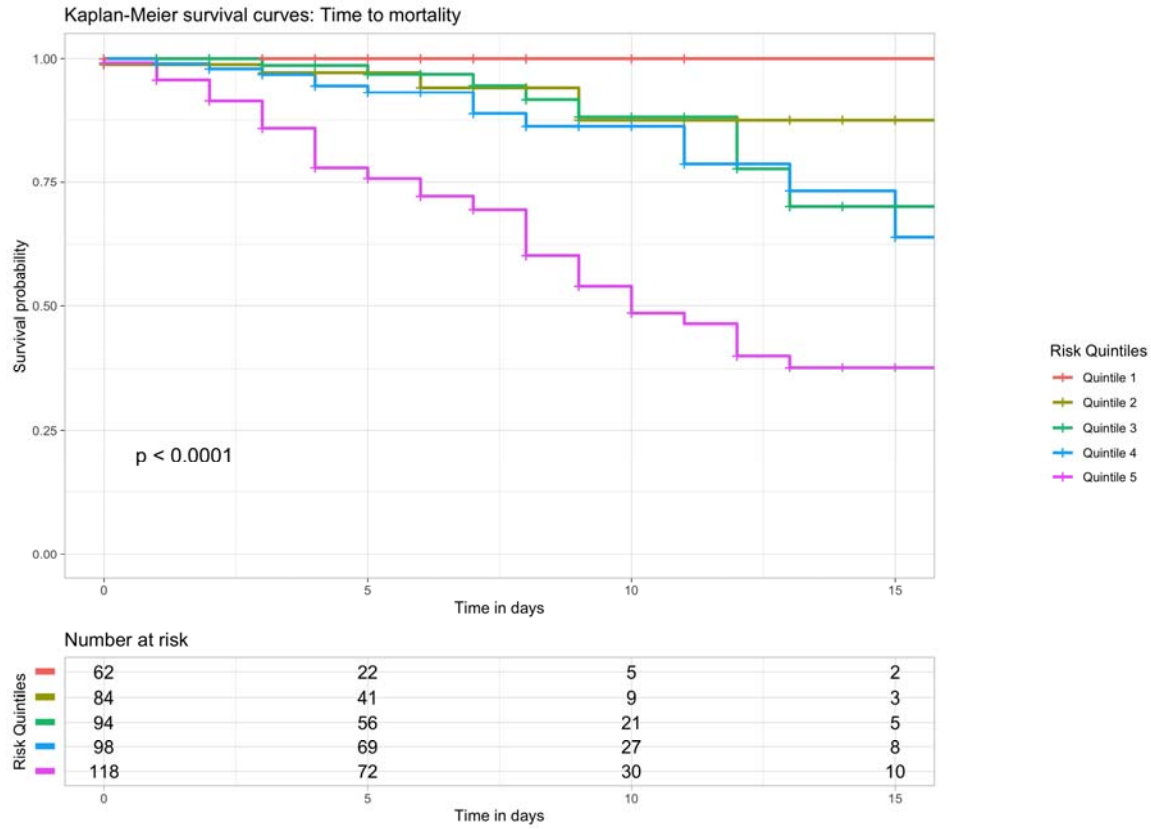


Figure 3. Survival curves, by model risk quintile, in testing set.

A. Time to mortality, censored at discharge, end of follow-up, or 15 days



B. Time to mechanical ventilation or death, censored at discharge, end of follow-up, or 15 days

