

## Early Evidence of Disparities in COVID-19 Testing in US Cities

Usama Bilal<sup>1,2</sup>, Sharrelle Barber<sup>1,2</sup>, Ana Diez-Roux<sup>1,2</sup>

1.- Urban Health Collaborative, Drexel Dornsife School of Public Health, Philadelphia, PA

2.- Department of Epidemiology and Biostatistics, Drexel Dornsife School of Public Health, Philadelphia, PA

**Corresponding Author:** Usama Bilal, MD MPH PhD

Address: 3600 Market St. Suite 730, Philadelphia, PA, 19104

Email: [ubilal@drexel.edu](mailto:ubilal@drexel.edu)

Phone: +1 267-359-6378

**Word count:** 597

### Abstract

We explored the emergence of disparities in COVID-19 testing and outcomes in NYC and Philadelphia, two large US cities at two different stages of the epidemic. We used zip code-level data from the NYC Department of Health and Mental Hygiene and the Philadelphia Department of Public Health. We linked this data to a deprivation index calculated using 2014-2018 American Community Survey data. We have documented a dynamic situation regarding disparities in COVID-19 testing in two US cities. There are wide disparities in testing availability for the most deprived neighborhoods in Philadelphia, a city early in the epidemic, while these disparities seemingly dissipated in NYC, a city with more widespread testing later in the epidemic. However, we consistently see a very strong positive correlation with the % of tests that are positive in both cities, and this disparity is widening over time.

## Introduction

By April 14<sup>th</sup> 2020, the COVID-19 pandemic has taken the lives of more than 132,000 people worldwide, 7,900 of them in New York City (NYC) alone(1). A recent report by the Barcelona Department of Public Health highlighted a much higher incidence rate of COVID-19 in the poor neighborhoods of Barcelona, one of the most affected cities in Spain(2). We explored the emergence of disparities in COVID-19 testing and outcomes in NYC and Philadelphia, two large US cities at two different stages of the epidemic.

## Methods

We used zip code-level data from the NYC Department of Health and Mental Hygiene(3) and the Philadelphia Department of Public Health(4), including number of total and positive tests for April 1<sup>st</sup>, 7<sup>th</sup>, and 14<sup>th</sup>, 2020. We linked this data to the 2014-2018 American Community Survey and calculated a deprivation index using the first component from a principal components analysis with seven sociodemographic variables (median household income [log], % non-Hispanic White, % with college education, % uninsured, % households with limited English proficiency, % working in service jobs, % overcrowded households [ $>1$  person per room]). We computed three outcomes: testing per capita (total tests/population), % positives (positive tests/total tests), and cumulative incidence (positive tests/population). We estimated Pearson correlation coefficients between the deprivation index and the three outcomes using R v3.6.

## Results

In Philadelphia, by April 14th we found a correlation of  $\rho=-0.46$ ,  $0.58$ , and  $0.08$  between zip code-level deprivation and testing per capita, % positives, and cumulative incidence,

respectively (Figure 1). By the same date in NYC, all these correlations were shifted upwards to  $\rho=0.05$ ,  $\rho=0.81$ , and  $\rho=0.37$  respectively (Figure 1 and 2). For both cities, between April 1<sup>st</sup> and April 14<sup>th</sup> we observed a weakening of disparities in testing per capita and a worsening of the disparities in % positives (Figure 2). This resulted in a strengthening of disparities in cumulative incidence in NYC, and a shift from a strong reverse disparity in Philadelphia to a weak disparity.

## **Conclusion**

We have documented a dynamic situation regarding disparities in COVID-19 testing in two US cities. There are wide disparities in testing availability for the most deprived neighborhoods in Philadelphia, a city early in the epidemic, while these disparities seemingly dissipated in NYC, a city with more widespread testing later in the epidemic. However, we consistently see a very strong positive correlation with the % of tests that are positive in both cities, and this disparity is widening over time. These results suggest potential greater community spread in these neighborhoods and is aligned with recent data showing that social distancing is socially patterned, with less social distancing in lower income neighborhoods due to structural constraints(5). The evolution of disparities in testing availability suggests that incidence data in early stages of the epidemic may provide an inaccurate picture of disparities in the burden of disease, and complementary measures of disease burden should be considered.

These disparities in testing and results should be considered side by side with recent preliminary reports of wide disparities in deaths due to COVID-19. The Minnesota Department of Public Health has reported that, as of April 3<sup>rd</sup>, African Americans made up almost half of the cases and 81% of the of the deaths in Milwaukee County, where the population is only 26% black, a situation that is similar in Michigan and New Orleans(6).

Communities of color and of low socioeconomic status have long borne the burden of adverse health linked to discrimination, structural racism, xenophobia and lack of material resources. In health crises, such as this one, all these social problems become magnified and even stronger forces of injustice.

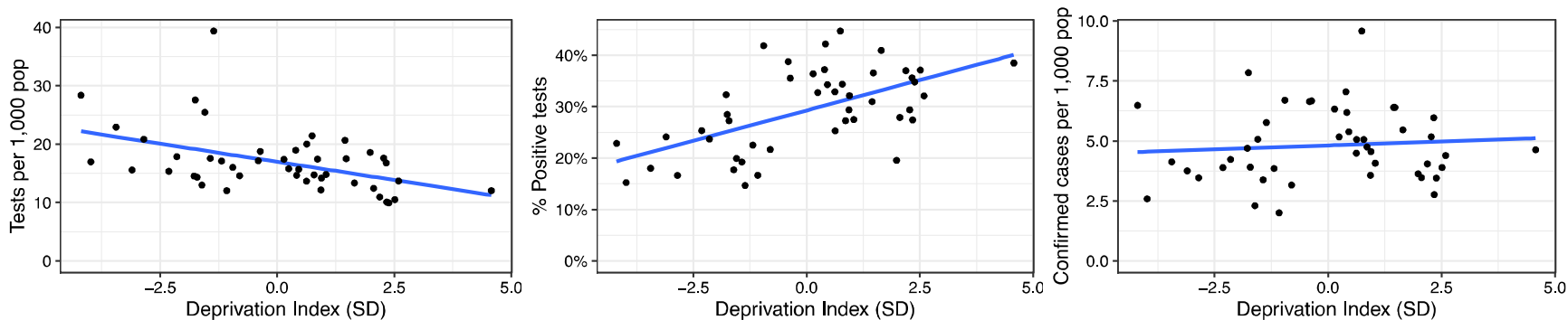
## References

1. Dong E, Du H, Gardner L. An interactive web-based dashboard to track COVID-19 in real time. *The Lancet Infectious Diseases*. 2020.
2. Burgen S, Jones S. Poor and vulnerable hardest hit by pandemic in Spain. *The Guardian*; 2020.
3. NYC DOMH; Pages <https://github.com/nychealth/coronavirus-data> on April 8th 2020.
4. Philadelphia Department of Public Health; Pages <https://www.phila.gov/programs/coronavirus-disease-2019-covid-19/testing-and-data/> on April 8th 2020.
5. Valentino-DeVries J, Lu D, Dance GJX. Location Data Says It All: Staying at Home During Coronavirus Is a Luxury. *The New York Times*; 2020.
6. Johnson A, Buford T. Early Data Shows African Americans Have Contracted and Died of Coronavirus at an Alarming Rate. *ProPublica*; 2020.

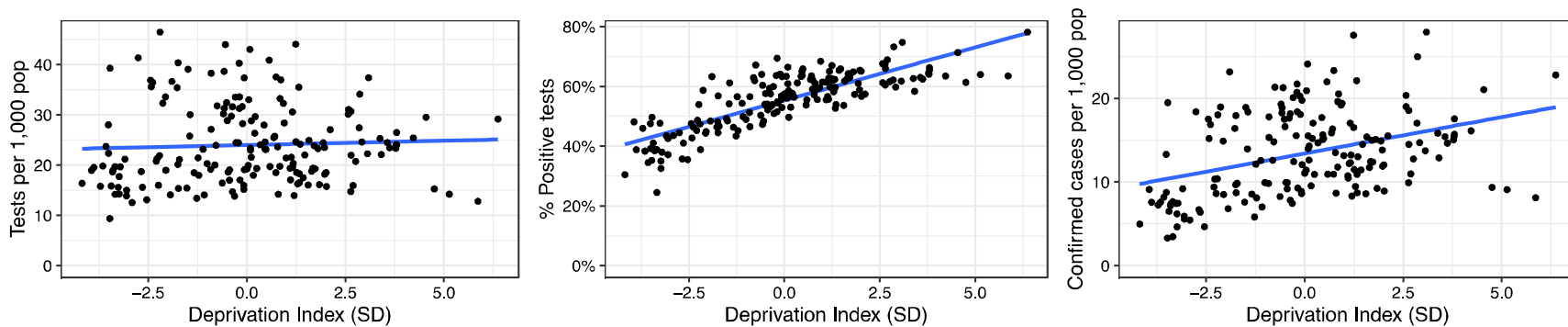
## Figures

Figure 1: COVID-19 testing in zip codes of New York City and Philadelphia

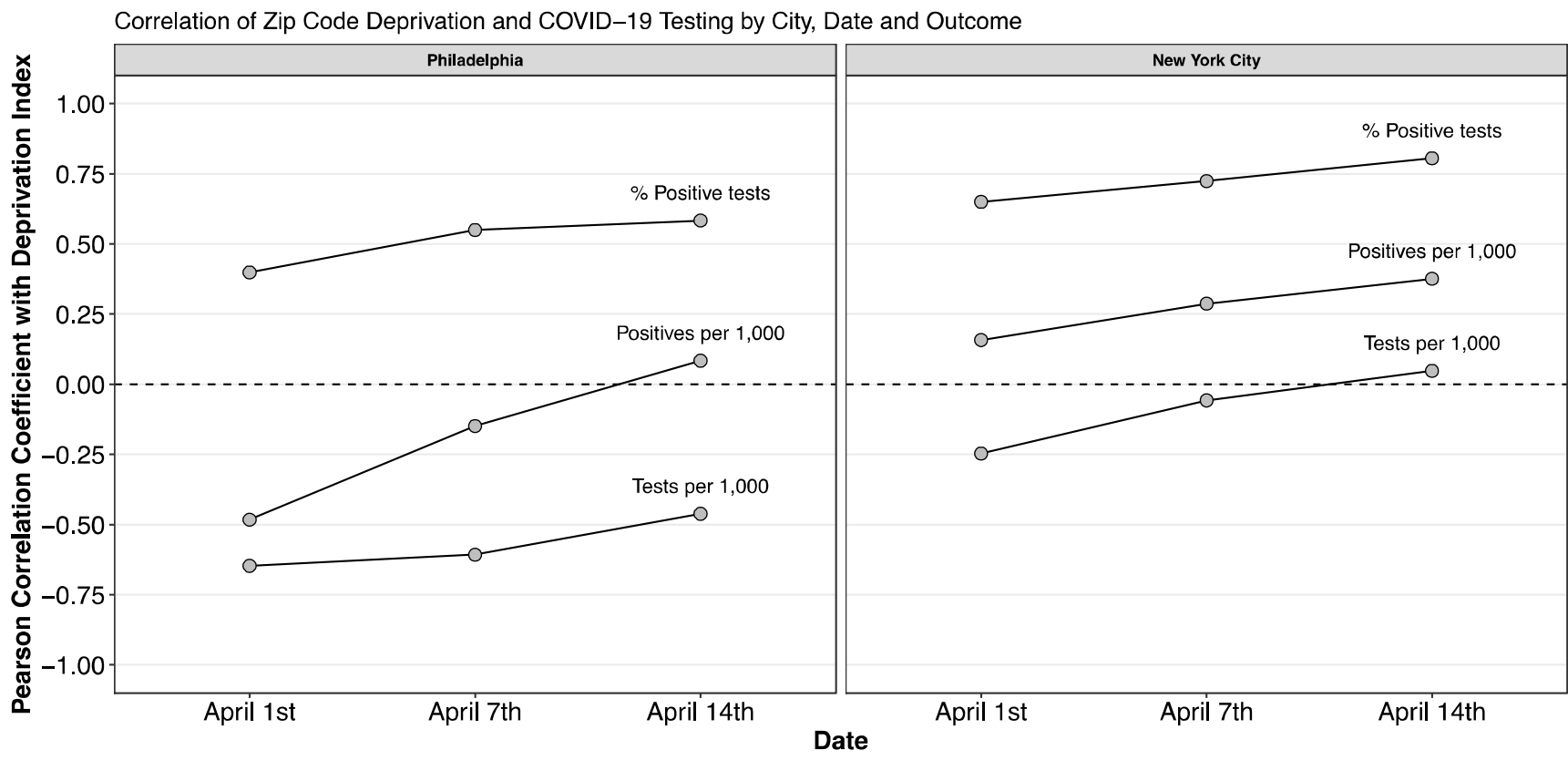
### COVID-19 Testing in Zip Codes of Philadelphia by April 14th, 2020



### COVID-19 Testing in Zip Codes of New York City by April 14th, 2020



**Figure 2: correlation coefficients between zip-code deprivation and COVID-19 testing outcomes by city and date**



Source: NYCDOH, PDPH, and ACS