

## Famotidine Use is Associated with Improved Clinical Outcomes in Hospitalized COVID-19 Patients: A Propensity Score Matched Retrospective Cohort Study

Daniel E. Freedberg, MD, MS,<sup>1</sup> Joseph Conigliaro, MD, MPH,<sup>2</sup> Magdalena E. Sobieszczyk, MD, MPH,<sup>3</sup> David D. Markowitz, MD,<sup>1</sup> Aakriti Gupta, MD, MS,<sup>4</sup> Max R. O'Donnell, MD, MPH,<sup>5</sup> Jianhua Li, MD,<sup>6</sup> David A. Tuveson, MD, PhD,<sup>7</sup> Zhezhen Jin, PhD,<sup>8</sup> William C. Turner, MD,<sup>6</sup> Donald W. Landry, MD, PhD,<sup>6</sup> Timothy C. Wang, MD,<sup>1</sup> Kevin J. Tracey, MD,<sup>9</sup> Michael V. Callahan, MD,<sup>10</sup> Julian A. Abrams, MD, MS<sup>1</sup>

<sup>1</sup>Division of Digestive and Liver Diseases, Columbia University Irving Medical Center-New York Presbyterian Hospital, New York, NY

<sup>2</sup>Division of General Internal Medicine, Department of Medicine, Northwell Health, Manhasset, NY and Zucker School of Medicine at Hofstra/Northwell

<sup>3</sup>Division of Infectious Diseases, Columbia University Irving Medical Center-New York Presbyterian Hospital, New York, NY

<sup>4</sup>Division of Cardiology, Columbia University Irving Medical Center-New York Presbyterian Hospital, New York, NY

<sup>5</sup>Division of Pulmonary, Allergy, and Critical Care Medicine, Columbia University Irving Medical Center-New York Presbyterian Hospital, New York, NY

<sup>6</sup>Department of Medicine, Columbia University Irving Medical Center-New York Presbyterian Hospital, New York, NY

<sup>7</sup>Cancer Center, Cold Spring Harbor Laboratory, Cold Spring Harbor, NY

<sup>8</sup>Department of Biostatistics, Columbia University Mailman School of Public Health, New York, NY

<sup>9</sup>Feinstein Institutes for Medical Research, Northwell Health, Manhasset, NY

<sup>10</sup>Division of Infectious Diseases, Massachusetts General Hospital, Boston, MA and Office of the Assistant Secretary for Public Health Preparedness and Response, U.S. Department of Health and Human Services, Washington, DC

Correspondence: Daniel Freedberg ([def2004@cumc.columbia.edu](mailto:def2004@cumc.columbia.edu)) or Julian Abrams ([ja660@cumc.columbia.edu](mailto:ja660@cumc.columbia.edu))

Conflicts: None.

Acknowledgments: The authors thank Dr. Michael Wigler and Dr. Richard Axel for useful suggestions.

## ABSTRACT

**Background and Aims:** The COVID-19 pandemic has caused widespread mortality and mortality. Famotidine is commonly used for gastric acid suppression but has recently gained attention as an antiviral that may inhibit SARS-CoV-2 replication. This study tested whether famotidine use is associated with improved clinical outcomes in patients with COVID-19 initially hospitalized to a non-intensive care setting.

**Methods:** This was a retrospective cohort study conducted among consecutive hospitalized patients with COVID-19 infection from February 25 to April 13, 2020 at a single medical center. The primary exposure was famotidine, received within 24 hours of hospital admission. The primary outcome was intubation or death. Propensity score matching was used to balance the baseline characteristics of patients who did and did not use famotidine.

**Results:** 1,620 hospitalized patients with COVID-19 were identified including 84 (5.1%) who received famotidine within 24 hours of hospital admission. 340 (21%) patients met the study composite outcome of death or intubation. Use of famotidine was associated with reduced risk for death or intubation (adjusted hazard ratio (aHR) 0.42, 95% CI 0.21-0.85) and also with reduced risk for death alone (aHR 0.30, 95% CI 0.11-0.80). After balancing baseline patient characteristics using propensity score matching, these relationships were unchanged (HR for famotidine and death or intubation: 0.43, 95% CI 0.21-0.88). Proton pump inhibitors, which also suppress gastric acid, were not associated with reduced risk for death or intubation.

**Conclusion:** Famotidine use is associated with reduced risk of intubation or death in hospitalized COVID-19 patients. Randomized controlled trials are warranted to determine whether famotidine therapy improves outcomes in hospitalized COVID-19 patients.

**Key words:** coronavirus 2019; SARS-CoV-2; COVID-19; famotidine; histamine-2 receptor antagonists

## INTRODUCTION

The worldwide SARS-CoV-2 epidemic has led to an estimated 2 million cases and over 150,000 deaths as of mid-April 2020 (1). Many patients are relatively stable at the time of hospitalization but rapidly decompensate, require intubation, and die. Case fatality rates among hospitalized patients vary from 10-26% (2-5). It has been suggested that high rates of viral replication during the initial stable phase of disease can lead to a massive cytokine release syndrome and clinical deterioration in certain patients (6). Clinical trials are underway to assess the efficacy of a variety of antiviral drugs as well as other medications such as hydroxychloroquine with potential anti-inflammatory effects. However, some of these drugs have known toxicities, and to date no drug has been proven to improve outcomes in COVID-19 patients.

Famotidine is a histamine-2 receptor antagonist that suppresses gastric acid production and is frequently prescribed for hospitalized patients for stress ulcer prophylaxis. *In vitro*, famotidine has demonstrated antiviral properties by inhibiting HIV replication (7). Recently, Wu *et al.* used computational methods to predict structures of proteins encoded by SARS-CoV-2 genes, and then identified existing compounds that could potentially act on SARS-CoV-2 targets (8). The authors identified famotidine as one of the drugs most likely to inhibit 3-chymotrypsin-like protease (3CL<sup>pro</sup>). 3CL<sup>pro</sup> is key to proteolytic processing of the SARS-CoV-2 polypeptide into the non-structure proteins that are essential for viral replication (9). The gene encoding 3CL<sup>pro</sup> is highly conserved, and thus 3CL<sup>pro</sup> represents an attractive drug discovery target (10).

In light of the potential inhibitory effects of famotidine on SARS-CoV-2 replication, we hypothesized that famotidine would prevent or ameliorate the cytokine release syndrome and

would be associated with improved clinical outcomes among hospitalized patients with COVID-19. To explore this, we performed a retrospective cohort study at a single academic center located at the epicenter of the COVID-19 pandemic in the United States.

## **METHODS**

### **Population**

Adults aged 18 years or more were eligible for the study if they were admitted to Columbia University Irving Medical Center or its affiliate the Allen Pavilion from February 25, 2020 to April 13, 2020 and tested positive for SARS-CoV-2 by nasopharyngeal polymerase chain reaction at presentation or within no more than 72 hours following admission. This 72-hour window was selected because, during the earliest phase of the SARS-CoV-2 pandemic, testing availability was limited and could take up to 72 hours for a result. Patients were excluded if they survived less than 48 hours following hospital admission or if they required urgent or semi-urgent intubation within 48 hours of hospital admission. This study was approved by the institutional review board of the Columbia University Irving Medical Center.

### **Exposure**

The primary exposure was use of famotidine, classified as present if famotidine was received within 24 hours of hospital admission and otherwise classified as absent. Famotidine use was ascertained directly from electronic medical order entry records and could be intravenous or oral, at any dose or duration. Home use of famotidine was examined to understand the reason underlying in-hospital use of famotidine and was classified based on electronic medication reconciliation performed at the time of hospital admission.

## **Primary outcome**

The primary outcome was a composite of death or endotracheal intubation within 30 days of hospital admission (intubation-free survival). Mortality data was ascertained from the electronic medical record (EMR), which interfaces with the social security death index. Endotracheal intubation was ascertained from EMR documentation of need for mechanical ventilation. The rationale for the combined primary outcome was twofold: 1) many patients who deteriorated clinically died without being intubated, often due to transition to palliative care; 2) hospitalization stays for intubated COVID-19 patients have been very long, and many intubated COVID-19 patients at the time of the analyses may ultimately not survive.

## **Co-variables**

Based on emerging reports of risk factors for COVID-19, the following co-variables were selected for inclusion in the analysis: pre-existing diabetes, hypertension, coronary artery disease (CAD), heart failure, end-stage renal disease or chronic kidney disease, and chronic pulmonary disorders, all classified based on the presence of corresponding ICD-10 codes at the time of hospital admission; obesity, classified based on body mass index (BMI); and age, classified as <50 years old, 50-65 years old, and >65 years old. To assess severity of COVID-19, the first recorded form of supplemental oxygen after triage was captured and was classified as room air, nasal cannula oxygen, or non-rebreather/similar. Use of proton pump inhibitors was classified in the same manner as use of famotidine so that proton pump inhibitors could be evaluated to test whether any effects of famotidine might be related to acid suppression. Use of hydroxychloroquine became common in the hospital during the study period, and was classified

categorically. The maximum value of plasma ferritin was obtained during the study period for each patient to use as a surrogate for the extent of cytokine storm (normal laboratory range 13.0 to 150.0 ng/mL).

### **Statistical approach**

Categorical variables were compared across exposure groups using chi-squared tests. Full and reduced Cox proportional hazards models were constructed within the complete cohort, with patients followed from the time of hospital admission until the first of the following events: death, intubation, 30 days of follow-up, or the close of the study on April 20, 2020. This provided the opportunity for a minimum of 7 days of follow-up time for all patients in the study. The proportional hazards assumption was verified by visual inspection of time-to-event data and by testing for a non-zero slope in the Schoenfeld residuals (11). The full Cox model included all baseline variables. For the reduced model, variables were dropped stepwise unless they had a significant independent relationship with the composite outcome or unless they altered the  $\beta$ -coefficient representing famotidine by at least 10%. Propensity score matching was then performed to balance the baseline characteristics of patients with respect to use of famotidine with a 5:1 nearest-neighbor matching strategy and a caliper of 0.2. The primary analysis was conducted as a time-to-event model within the propensity score-matched cohort, using the same approach. All analyses were performed using STATA statistical software (version 14, StataCorp) at the  $\alpha = .05$  level of significance.

### **Additional analyses**

Several sensitivity analyses were performed. First, use of proton pump inhibitors was compared to no proton pump inhibitors within the complete (unmatched) cohort after excluding those who used famotidine. The purpose of this analysis was to test whether unmeasured patient characteristics related to use of acid suppression rather than famotidine were associated with improved outcomes in COVID-19. Second, an additional study cohort was built including records from patients who tested negative for SARS-CoV-2 during the study period. Within this cohort, use of famotidine was compared to no famotidine to test whether unmeasured patient characteristics related to use of famotidine were associated with improved outcomes regardless of reason for hospitalization (i.e., to test whether the observed association with famotidine was specific for COVID-19 patients). Third, a stratified analysis was performed within the complete cohort to assess for effect modification of famotidine based on in-hospital use of hydroxychloroquine.

## **RESULTS**

### **Population and use of famotidine**

A total of 1,620 patients met criteria for analysis including 84 patients (5.1%) who received famotidine within 24 hours of hospital admission. The median age was 65 years (IQR 52 to 77), 44% were female, and the median BMI when recorded was 28.1 kg/m<sup>2</sup> (IQR 24.9 to 32.6). Home use of famotidine was documented on admission medication reconciliation in 15% of those who used famotidine while hospitalized compared to 1% of those who did not (p<0.01). Within the cohort, 28% of all famotidine doses were intravenous; 47% of famotidine doses were 20 mg, 35% were 40 mg, and 17% were 10mg. Famotidine users received a median 5.8 days of drug for a total median dose of 136 mg (63 – 233 mg). There were minimal differences



comparing patients who used famotidine to those who did not, and balance between the groups was further improved after propensity score matching (**Table 1**).

### **Death or intubation**

There were 142 (8.8%) patients intubated and 238 (15%) who died during the study period; 340 (21%) patients met the composite study outcome. In crude analysis, use of famotidine was significantly associated with reduced risk for the composite outcome of death or intubation (**Figure 1**, log-rank  $p < 0.01$ ). This association was driven primarily by the relationship between famotidine and death (**Figure 2**, log-rank  $p < 0.01$ ). When those who died prior to intubation were excluded, there was no association between use of famotidine and intubation (log-rank  $p = 0.40$ ).

### **Plasma ferritin**

The maximum plasma ferritin value during the hospitalization was assessed to address the hypothesis that, by blocking viral replication, famotidine reduces cytokine storm during COVID-19. Median ferritin was 708 ng/mL (IQR 370-1,152) among users of famotidine versus 846 ng/mL (IQR 406-1,552) among non-users (rank-sum  $p = 0.03$ ).

### **Multivariable analysis**

A multivariable Cox proportional hazards model was constructed to assess the independent risk associated with use of famotidine. After adjusting for baseline patient characteristics, use of famotidine was independently associated with risk for death or intubation (**Table 2**, adjusted hazard ratio (aHR) 0.42, 95% CI 0.21-0.85). Age was also an independent predictor of adverse

outcomes in this model (aHR 7.68, 95% CI 4.79-12.3 for patients >65 years old versus those <50 years old). When the final model was repeated with death as the outcome rather than the composite outcome of death or intubation, the results were similar (aHR for famotidine 0.30, 95% CI 0.11-0.80). The association between famotidine and death or intubation remained fundamentally unchanged after propensity score matching to further balance the co-variables based on famotidine (HR 0.43, 95% CI 0.21-0.88).

### **Additional analyses**

Several sensitivity analyses were performed. In the first analysis, use of proton pump inhibitors was analyzed because proton pump inhibitors are also gastric acid suppression medications with similar indications as famotidine. There were 398 (25%) patients who received proton pump inhibitors within 24 hours of hospital admission. After excluding patients who received famotidine, use of proton pump inhibitors was associated with increased risk for the composite outcome of death or intubation (HR 1.59, 95% CI 1.27-1.99). After adjusting for age, BMI, diabetes, hypertension, and baseline oxygen requirement, this association was substantially attenuated but remained statistically significant (aHR 1.34, 95% CI 1.06-1.69). In the second sensitivity analysis, an additional cohort was built containing records for 784 patients who were hospitalized during the study period but tested negative for SARS-CoV-2. Among these patients without COVID-19, use of famotidine was not associated with reduced risk for death or intubation (24 deaths or intubations, log-rank  $p=0.70$ ). Last, the complete cohort was examined for effect modification of famotidine based on in-hospital use of hydroxychloroquine. The relationship between famotidine and the primary outcome remained similar among 930 patients

who used hydroxychloroquine (HR for famotidine 0.35, 95% CI 0.14-0.85) and among 690 patients who did not use hydroxychloroquine (HR for famotidine 0.55, 95% CI 0.18-1.75).

## **CONCLUSIONS**

This retrospective study found that, in patients hospitalized with COVID-19 who did not require urgent or semi-urgent intubation, famotidine use was associated with a significantly reduced risk of clinical deterioration leading to intubation or death. This association was independent of known predictors of adverse outcomes in COVID-19 including age, BMI, and comorbidities. The results were specific for famotidine (no protective association was seen among users of proton pump inhibitors) and also specific for COVID-19 (no protective association was observed for famotidine in patients without COVID-19). A lower peak ferritin value was observed among users of famotidine, supporting the hypothesis that use of famotidine may decrease cytokine release in the setting of SARS-CoV-2 infection. A randomized controlled trial is now underway to determine the efficacy of famotidine to improve clinical outcomes in hospitalized COVID-19 patients (NCT04370262).

For any intervention aimed at improving COVID-19 outcomes, timing is likely to be important. This study assessed receipt of famotidine starting at hospital admission, before patients deteriorated clinically to the point of respiratory failure. If famotidine does have a protective effect, additional studies are warranted to determine if starting even earlier (e.g., at the onset of symptoms) is associated with a decreased risk of subsequent hospitalization. Drugs that inhibit viral replication may or may not be as effective in patients who are already critically ill, as by

that point systemic inflammation due to cytokine release syndrome may be the primary driver of poor outcomes.

While famotidine has not previously been studied in patients for antiviral effects, limited published data do suggest a potential antiviral effect of this medication. Wu *et al.* recently published results of computer modeling analyses in which the group estimated the structures of 19 SARS-CoV-2 virus proteins and then used the ZINC drug database to identify potential agents that could target these proteins (8). Famotidine was one of the highest-ranked matches for drugs that could potentially target 3CL<sup>pro</sup>. Transcription of the SARS-CoV-2 genome results in generation of a large polypeptide, which is then cleaved into numerous proteins by 3CL<sup>pro</sup> and papain-like protease (PL<sup>pro</sup>). Cleavage by 3CL<sup>pro</sup> is necessary for generation of various non-structure proteins that are critical to SARS-CoV-2 replication (9). In the 1990s, Bourinbaier and Fruhstorfer found that histamine-2 receptor antagonists including famotidine inhibited HIV replication *in vitro*, whereas the histamine-1 receptor antagonists diphenhydramine and cyproheptadine had no effects (7). While these studies investigate a direct antiviral mechanism, downstream immune-mediated effects are also possible *in vivo* (12, 13).

There are several strengths to the current study. The cohort size was large with comprehensive data on patient characteristics and close follow-up. We accounted for known predictors of poor outcomes including age, BMI, and relevant comorbidities. We found no protective association between proton pump inhibitor use and patient outcomes, suggesting that any beneficial effect of famotidine is not secondary to gastric acid suppression. There are also important limitations to the study. This was an observational analysis, and we cannot exclude the possibility of

unmeasured confounders that account for the association between famotidine use and improved outcomes. No samples were gathered, and mechanism cannot be directly assessed. Finally, this was a single center study, which may limit generalizability of the findings.

In sum, in patients hospitalized with COVID-19 and not initially in an intensive care setting, famotidine use was associated with a two-fold reduction in clinical deterioration leading to intubation or death. These findings are observational and should not be interpreted to indicate that famotidine has a protective effect in patients hospitalized with COVID-19. However, in light of the potential antiviral effects of famotidine, randomized trials have been undertaken to determine whether famotidine improves clinical outcomes in patients hospitalized with COVID-19.

**TABLES**

**Table 1. Patient characteristics at the time of hospital admission for COVID-19, stratified by use of famotidine.**

Characteristics	Complete Cohort			After Propensity Score Matching		
	Famotidine (n=84)	No Famotidine (n=1,536)	p-value	Famotidine (n=84)	No Famotidine (n=420)	p-value
Age			0.39			0.51
<50 years old	13 (15%)	320 (21%)		13 (15%)	57 (14%)	
50-65 years old	31 (37%)	483 (31%)		31 (37%)	184 (44%)	
>65 years old	40 (48%)	733 (48%)		40 (48%)	179 (43%)	
Female sex	45 (54%)	864 (56%)	0.63	39 (46%)	208 (50%)	0.60
Race/ethnicity			0.20			0.90
Hispanic	25 (30%)	601 (39%)		25 (30%)	127 (30%)	
White, non-hispanic	19 (23%)	336 (22%)		19 (23%)	82 (20%)	
Black, non-hispanic	18 (21%)	322 (21%)		18 (21%)	102 (24%)	
Other	22 (26%)	277 (18%)		22 (26%)	109 (26%)	
BMI, kg/m <sup>2</sup>			0.17			0.97
<25.0	15 (18%)	295 (19%)		15 (18%)	66 (16%)	
25.0-29.9 (overweight)	30 (36%)	388 (25%)		30 (36%)	157 (37%)	
≥30 (obese)	22 (26%)	434 (28%)		22 (26%)	110 (26%)	
Not recorded	17 (20%)	419 (27%)		17 (20%)	87 (21%)	
Comorbidities						
Diabetes	24 (29%)	311 (20%)	0.07	24 (29%)	106 (25%)	0.52
Hypertension	29 (35%)	428 (28%)	0.19	29 (35%)	124 (30%)	0.36
CAD	9 (11%)	109 (7%)	0.21	9 (11%)	37 (9%)	0.58
Heart failure	7 (8%)	85 (6%)	0.28	7 (8%)	26 (6%)	0.47
ESRD or CKD	11 (13%)	130 (8%)	0.14	11 (13%)	47 (11%)	0.62
Chronic pulmonary disorders	2 (2%)	120 (8%)	0.07	2 (2%)	6 (11%)	0.52
Initial oxygen requirement			0.39			0.85
Room air	25 (30%)	378 (25%)		25 (30%)	116 (28%)	
Nasal canula	38 (45%)	678 (44%)		38 (45%)	187 (44%)	
Non-rebreather or similar	480 (31%)	21 (25%)		21 (25%)	117 (28%)	

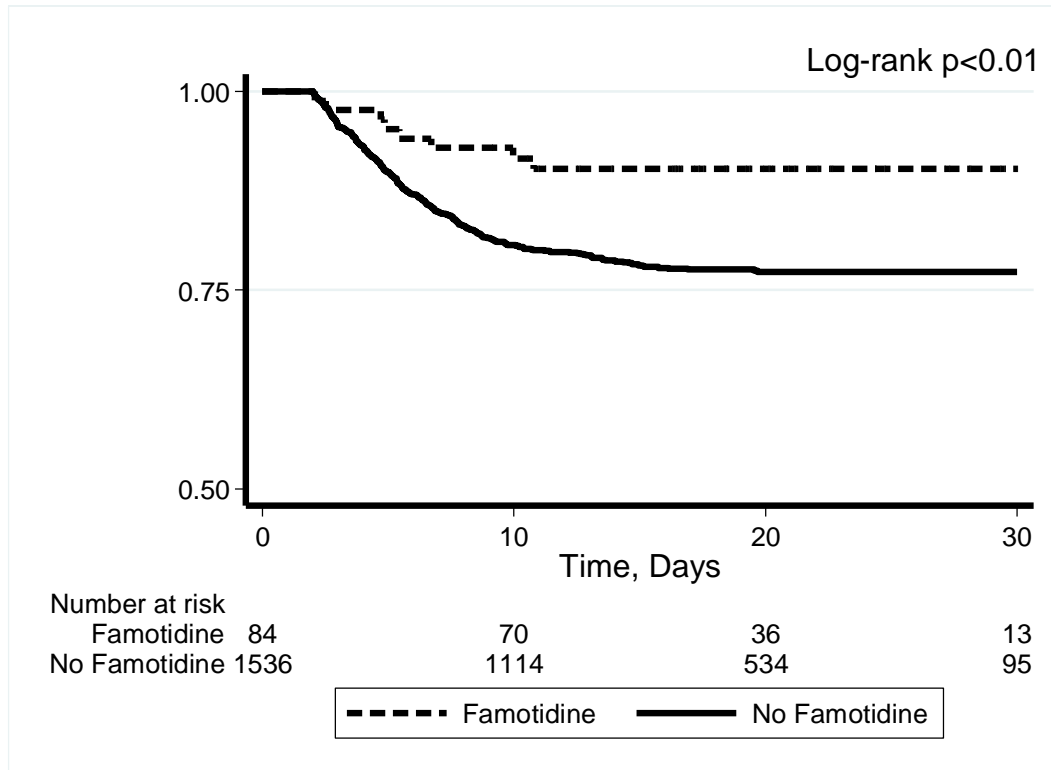
BMI: body mass index; CAD: coronary artery disease; ESRD: end-stage renal disease; CKD: chronic kidney disease.

**Table 2. Final Cox proportional hazards model of risk factors for death or intubation among patients with COVID.**

Characteristics	Death or intubation / n at risk (%)	Hazard ratio (95% CI)	
		Full model	Final model
Famotidine			
No	332 / 1,536 (22%)	Reference	Reference
Yes	8 / 84 (10%)	0.43 (0.21 – 0.86)	0.42 (0.21-0.85)
Age			
<50 years old	19 / 333 (5.7%)	Reference	Reference
50-65 years old	75 / 514 (15%)	2.94 (1.77-4.89)	3.03 (1.83-5.03)
>65 years old	246 / 773 (32%)	7.51 (4.66-12.1)	7.68 (4.79-12.3)
Sex			
Male	197 / 909 (22%)	Reference	---
Female	143 / 711 (20%)	1.11 (0.89-1.38)	
Race/ethnicity			
Hispanic	129 / 626 (21%)	Reference	---
White, non-hispanic	84 / 355 (24%)	0.99 (0.75-1.31)	
Black, non-hispanic	59 / 340 (17%)	0.82 (0.60-1.13)	
Other	68 / 299 (23%)	1.14 (0.85-1.53)	
Body mass index, kg/m <sup>2</sup>			
<25.0	86 / 310 (28%)	Reference	---
25.0-29.9 (overweight)	92 / 418 (22%)	0.88 (0.65-1.18)	
≥30 (obese)	89 / 456 (20%)	0.97 (0.72-1.31)	
Not recorded	73 / 436 (17%)	0.67 (0.49-0.92)	
Comorbidities			
Diabetes	72 / 335 (21%)	1.02 (0.75-1.37)	---
Hypertension	94 / 457 (21%)	0.72 (0.54-0.97)	0.74 (0.58-0.94)
CAD	24 / 118 (20%)	0.77 (0.49-1.21)	---
Heart failure	24 / 92 (26%)	1.06 (0.67-1.67)	---
ESRD or CKD	33 / 141 (23%)	1.16 (0.77-1.75)	---
Chronic pulmonary disorders	29 / 122 (24%)	1.29 (0.87-1.93)	---
Initial oxygen requirement			
Room air	52 / 403 (13%)	Reference	---
Nasal canula	155 / 716 (22%)	1.60 (1.17-2.19)	1.63 (1.19-2.24)
Non-rebreather	133 / 501 (27%)	2.48 (1.79-3.44)	2.39 (1.73-3.29)

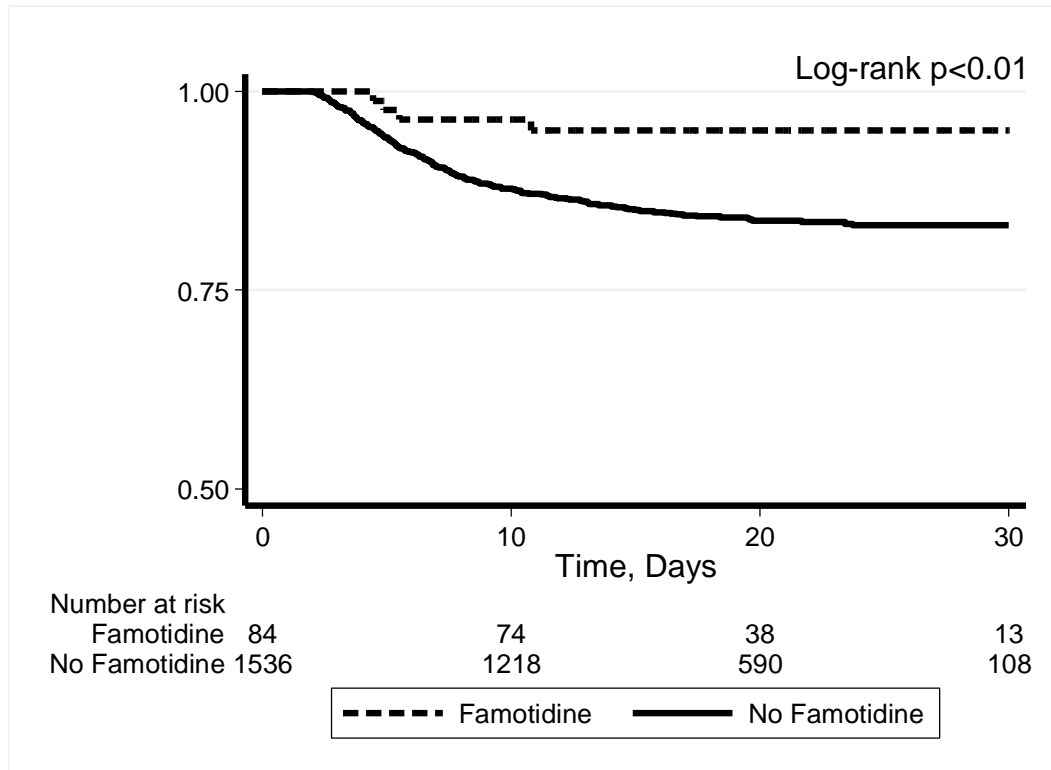
CAD: coronary artery disease; ESRD: end-stage renal disease; CKD: chronic kidney disease.

**Figure 1. Kaplan-Meier plot showing intubation-free survival through a maximum of 30 days, stratified by use of famotidine.**





**Figure 2. Kaplan-Meier plot showing survival through a maximum of 30 days, stratified by use of famotidine.**



## REFERENCES

1. World Health Organization, Situation Report 89, April 18, 2020. Available online at: [https://www.who.int/docs/default-source/coronaviruse/situation-reports/20200418-sitrep-89-covid-19.pdf?sfvrsn=3643dd38\\_2](https://www.who.int/docs/default-source/coronaviruse/situation-reports/20200418-sitrep-89-covid-19.pdf?sfvrsn=3643dd38_2).
2. Goyal P, Choi JJ, Pinheiro LC, Schenck EJ, Chen R, Jabri A, et al. Clinical Characteristics of Covid-19 in New York City. *N Engl J Med*. 2020.
3. Grasselli G, Zangrillo A, Zanella A, Antonelli M, Cabrini L, Castelli A, et al. Baseline Characteristics and Outcomes of 1591 Patients Infected With SARS-CoV-2 Admitted to ICUs of the Lombardy Region, Italy. *JAMA*. 2020.
4. Guan WJ, Ni ZY, Hu Y, Liang WH, Ou CQ, He JX, et al. Clinical Characteristics of Coronavirus Disease 2019 in China. *N Engl J Med*. 2020.
5. Huang C, Wang Y, Li X, Ren L, Zhao J, Hu Y, et al. Clinical features of patients infected with 2019 novel coronavirus in Wuhan, China. *Lancet*. 2020;395(10223):497-506.
6. Moore BJB, June CH. Cytokine release syndrome in severe COVID-19. *Science*. 2020.
7. Bourinbaier AS, Fruhstorfer EC. The effect of histamine type 2 receptor antagonists on human immunodeficiency virus (HIV) replication: identification of a new class of antiviral agents. *Life Sci*. 1996;59(23):PL 365-70.
8. Wu C, Liu Y, Yang Y, Zhang P, Zhong W, Wang Y, et al. Analysis of therapeutic targets for SARS-CoV-2 and discovery of potential drugs by computational methods. *Acta Pharm Sin B*. 2020.
9. Anand K, Ziebuhr J, Wadhvani P, Mesters JR, Hilgenfeld R. Coronavirus main proteinase (3CLpro) structure: basis for design of anti-SARS drugs. *Science*. 2003;300(5626):1763-7.
10. Morse JS, Lalonde T, Xu S, Liu WR. Learning from the Past: Possible Urgent Prevention and Treatment Options for Severe Acute Respiratory Infections Caused by 2019-nCoV. *Chembiochem*. 2020;21(5):730-8.
11. Grambsch PM, Therneau TM. Proportional hazards tests and diagnostics based on weighted residuals. *Biometrika*. 1994;81(3):515-26.
12. Chen X, Deng H, Churchill MJ, Luchsinger LL, Du X, Chu TH, et al. Bone Marrow Myeloid Cells Regulate Myeloid-Biased Hematopoietic Stem Cells via a Histamine-Dependent Feedback Loop. *Cell Stem Cell*. 2017;21(6):747-60 e7.
13. Li X, Zhang C, Liu L, Gu M. Existing bitter medicines for fighting 2019-nCoV-associated infectious diseases. *FASEB J*. 2020.