

RESEARCH

COVID-19 length of hospital stay: a systematic review and data synthesis

Eleanor M Rees^{1*†}, Emily S Nightingale^{2†}, Yalda Jafari¹, Naomi R Waterlow¹, Samuel Clifford¹, Carl A B Pearson^{1,3}, CMMID Working Group¹, Thibaut Jombart^{1,4,5}, Simon R Procter^{1^} and Gwenan M Knight^{1^}

*Correspondence:

eleanor.rees1@lshtm.ac.uk

¹Department of Infectious Disease Epidemiology, London School of Hygiene and Tropical Medicine, Keppel Street, London, UK

Full list of author information is available at the end of the article

[†]Equal contributor [^]Joint senior authors

Abstract

Background: The COVID-19 pandemic has placed an unprecedented strain on health systems, with rapidly increasing demand for healthcare in hospitals and intensive care units (ICUs) worldwide. As the pandemic escalates, determining the resulting needs for healthcare resources (beds, staff, equipment) has become a key priority for many countries. Projecting future demand requires estimates of how long patients with COVID-19 need different levels of hospital care.

Methods: We performed a systematic review to gather data on length of stay (LoS) of patients with COVID-19 in hospital and in ICU. We subsequently developed a method to generate LoS distributions which combines summary statistics reported in multiple studies, accounting for differences in sample sizes. Applying this approach we provide distributions for general hospital and ICU LoS from studies in China and elsewhere, for use by the community.

Results: We identified 52 studies, the majority from China (46/52). Median hospital LoS ranged from 4 to 53 days within China, and 4 to 21 days outside of China, across 45 studies. ICU LoS was reported by eight studies - four each within and outside China - with median values ranging from 6 to 12 and 4 to 19 days, respectively. Our summary distributions have a median hospital LoS of 14 (IQR: 10-19) days for China, compared with 5 (IQR: 3-9) days outside of China. For ICU, the summary distributions are more similar (median (IQR) of 8 (5-13) days for China and 7 (4-11) days outside of China). There was a visible difference by discharge status, with patients who were discharged alive having longer LoS than those who died during their admission, but no trend associated with study date.

Conclusion: Patients with COVID-19 in China appeared to remain in hospital for longer than elsewhere. This may be explained by differences in criteria for admission and discharge between countries, and different timing within the pandemic. In the absence of local data, the combined summary LoS distributions provided here can be used to model bed demands for contingency planning and then updated, with the novel method presented here, as more studies with aggregated statistics emerge outside China.

Keywords: Hospitalisation; ICU capacity; COVID-19; SARS-CoV-2; bed demand; length of stay

Background

As of the April 28th 2020, there have been over 3 million confirmed cases of COVID-19 and more than 200,000 deaths across 185 countries and territories [1]. Health systems are challenged by the influx of patients as SARS-CoV-2, the pathogen causing COVID-19, has spread throughout the world since its emergence in late

December 2019 [2–6]. The risks of healthcare services being overwhelmed was most dramatically illustrated in Italy, where a rapid increase of COVID-19 cases needing hospitalisation pushed a well-equipped health system of 3.2 hospital beds per 1,000 people to breaking point [7]. This raises serious concerns over the potential impact on more resource-constrained health systems in low- and middle-income countries (LMICs) as epidemics begin to expand across Africa and South America.

Understanding and predicting hospital bed demand (as well as associated staff or equipment requirements) provides crucial evidence for decision-making and contingency planning (7,8). Predicting demand for hospital services requires an estimate of the number of patients requiring hospitalisation, and an estimate of how long each person will require hospital care. It is possible to model the rate of hospitalisation in many settings based on estimated epidemic curves. However, estimating length of stay (LoS) in hospitals requires observation of individual patient pathways.

COVID-19 presents at varying levels of severity. Hospital care can vary from general ward based care to high dependency units with oxygen support to intensive care where patients may be intubated for mechanical ventilation [8–10]. The LoS is likely to depend on the level of care required, as well as the geographic setting due to varying COVID-19 care guidelines. For example, some hospitals in China were initially used as isolation settings [11, 12]. As knowledge of effective treatments changes, the pathways, staff, beds and equipment required are also likely to affect the duration and level of care needed. Moreover, patient characteristics - such as age and comorbidities - impact disease severity [8, 12–14] and are likely to influence LoS. If differences are significant then capacity planning may need to account for these characteristics to provide accurate predictions of the number of beds required at each level of care. Modelling studies predicting bed occupancy published so far have broadly relied on very few sources of information for LoS estimates, which were often derived from very different settings [15–22]. Estimates for LoS can be obtained from a variety of studies, but are often an incidental result rather than a study's primary outcome, and typically only summary statistics are reported. In general, LoS distributions are right-skewed due to a minority of patients with long hospital stays and are often modelled using gamma, log-normal or weibull distributions [23] (although log-normal is less preferred due to its heavier tails). A particular challenge is how to synthesise appropriate LoS distributions from a range of relevant sources in similar settings, capturing the variation both within and between them. Incorporating the uncertainty and stochasticity in parameters using a distribution, rather than fixed point estimates (such as the mean over all studies), allows for more realistic model predictions.

We performed a systematic review to identify the current evidence on LoS for COVID-19 patients worldwide. We also present a method for generating LoS summary distributions by combining information from different summary statistics (mean and medians) reported in multiple studies, and accounting for differences in sample sizes. In doing this work, we aim to inform the efforts of modellers and policy makers to better anticipate healthcare needs during the evolving COVID-19 pandemic.

Methods

Search strategy

This study was conducted following the Preferred Reporting Items for Systematic Reviews (PRISMA) guidelines(9). We searched the bibliographic databases Embase and Medline, as well as the online preprint archive medRxiv. The latter was expected to be an important source due to the current rapid development of this field, hence the fully published literature would capture only a small proportion of the available information. We included articles published up to 2020-04-12 that reported a LoS for COVID-19 patients admitted to hospital. To ensure all relevant papers were captured, we examined the title, abstract and keywords of known studies reporting LoS to identify relevant search terms. Our search combined the concepts of COVID-19 (Coronavirus, COVID-19, 2019-nCov and SARS-CoV-2) with search terms related to duration of hospital stay (length of stay, admission duration, admission length, hospital*). The search terms for hospital stay length were kept broad to capture studies that report LoS as a secondary outcome. The full search terms for Embase, Medline and medRxiv are presented in the supplementary materials. In addition to our systematic searches, we also checked situation reports from the following organisations to see if they reported LoS estimates: UK Intensive Care National Audit and Research Centre (ICNARC); International Severe Acute Respiratory and Emerging Infection Consortium (ISARIC); World Health Organisation (WHO); the US Centers for Disease Control and Prevention (CDC); and China CDC and European CDC (ECDC).

Inclusion and exclusion criteria

Inclusion criteria:

- 1 Studies that reported LoS in hospital for individuals who were admitted for confirmed COVID-19, or suspected COVID-19 which was later confirmed
- 2 Published (either as a pre-print or publication) between 2020-01-01 and 2020-04-12

Exclusion criteria:

- 1 Studies were excluded if LoS was reported for individuals only admitted to hospital for a reason other than confirmed or suspected COVID-19
- 2 Studies where the LoS endpoint was not death or discharge or continuing stay, for example transfer to another hospital
- 3 Studies which stated that hospitalisation was used as a form of isolation
- 4 Studies not published in English
- 5 Review articles

Screening

The screening process is summarised in Fig. 1. All titles and abstracts were screened independently by two reviewers (EMR and SRP). Subsequently, abstracts and full texts of potentially relevant papers were independently reviewed by two reviewers (EMR and YJ).

Figure 1: PRISMA diagram

Data extraction and analysis

The data that was extracted from each study is presented in Supplementary Table A. Data extraction was performed by EMR, YJ and ESN, and then verified by a second member of the study team. Study characteristics (such as study dates, study population and study design) were recorded from each study, as well as information on the LoS sample estimate for both general hospital and intensive care units (ICUs), including sample size, discharge status and completeness of follow-up. If multiple LoS estimates were reported for different study populations these were all recorded (for example, LoS reported by disease severity, comorbidities and treatment groups). One study specified non-ICU LoS and this was grouped with general LoS estimates; ICU LoS was reported separately. Average patient age and sex distribution (% male) were summarised across all studies by weighted mean and standard deviation (mean (sd)), according to study sample size.

Where possible, LoS estimates were recorded as median and IQR. Otherwise, mean and SD, or in some cases only a point estimate was provided. Where estimates were presented as a mean, x , and standard deviation, s , we calculated the comparable quantiles from a fitted Weibull distribution by moment-matching using the *mixdist* package [24] and then discretising using the *discrete* package [25] in R .

Estimating LoS distributions

Overall summary distributions were created for general hospitalisation LoS and for ICU LoS. We included studies in the estimation of these summary distributions if they reported both the sample size along with either the median and interquartile range or the mean and standard deviation. If no measure of variation was provided (either IQR or standard deviation), the point estimates were included in figures but excluded from these summary results.

A Weibull distribution was fitted to the summary data from each grouping (by country setting and general/ICU classification) in the appropriate studies, using the Nelder-Mead method (using the *stats* package in R [26]) for those reporting medians and IQRs, and the *mixdist* package [24] for those reporting means and standard deviations (as described in the previous section). The same approach was also tested using gamma distributions, but Weibull was marginally preferred with respect to total squared error in the fitted quantiles. These distributions were then discretised using the *discrete* package in R [25]. 100,000 samples were then drawn from each of these distributions, with weighting according to their sample size. Specifically, the study distributions were first sampled according to a multinomial distribution defined by the studies' relative sample sizes, and LoS was then sampled from each of these sampled distributions. Due to potential important differences in the characteristics of each study population, it may not be appropriate to weight entirely on sample size without considering how representative the cohort is of the general population. Therefore, as a sensitivity analysis, we performed the same analysis without weighting in order to understand how much this influences the distribution.

All analyses were performed using R version 3.6.3 (2020-02-29).

Results

Study characteristics

The results of our screening process are summarised in Fig. 1. After removing duplicates we found a total of 650 potentially eligible studies of which 52 studies met all the inclusion criteria. These included 32 peer-reviewed articles from the academic literature, 18 pre-print articles, and 2 reports from other sources ([27] and [28]). Several studies reported LoS by specific patient subgroups, according to disease severity, comorbidities (kidney injury, liver injury, hypertension, and cardiac injury), experimental treatments (heparin, lopinavir-ritonavir) and pregnancy status. A complete description of all reported LoS estimates are provided in Supplementary Table B. The key characteristics of the included studies are summarised in Table 1.

The studies were carried out between 2019-12-24 and 2020-04-16. Although the cut-off was 2020-04-12 for inclusion of published and pre-print studies, the most recent version of the ICNARC report [28] was used, which included patients admitted up to 2020-04-16. The majority of studies were cohort studies (46/52), with four cross-sectional studies, one case-control and one randomised control trial (RCT). Two articles were reports from on-going data-collections (ISARIC [27], 2020-04-08, and ICNARC [28], 2020-04-16).

Studies were mostly conducted in adults with average participant age from 19 to 76 years (mean (sd) across studies, weighted by sample size: 59 (9.6) years), and overall reported only a slightly higher proportion of males to females (54 (10.9) % male). Three pediatric studies included patients from newborn to 18 years, with a weighted mean (sd) of 7 (2.8) years of age [29–31]. For the majority of studies LoS was a secondary or incidental outcome rather than the primary outcome. As a result, age and sex distributions were not always specific to the LoS population, and instead reported for the overall study population. Furthermore, it was not always possible to accurately interpret the sample size of the population, nor whether the LoS estimate included still-hospitalised patients. All LoS data extracted from studies are reported in Supplementary Table B.

The majority of the included studies (46/52) were based in China, with a particularly high number reported from Wuhan(27/46), and many study populations were from the same Outside of China, there was one study from Italy [32], one for the whole EU region [33], two from the United States [34,35], one from the United Kingdom [28] and one study that collated LoS estimates from multiple countries excluding China (although the majority of the data are from the UK; [27]).

Most studies (43/52) reported LoS for general hospitalisation only, with four studies reporting LoS for ICU only, and five studies reporting both. Only 15 studies reported LoS for study populations with completed follow-up (patient discharge or death), with 37 reporting estimates for populations where some patients remained in hospital or in ICU. The majority of studies only included discharged or dead patients within their LoS estimate, even if they had incomplete follow-up of the full cohort. However, for 8 studies it was unclear whether the reported LoS included patients who were still hospitalised [33,34,36–41].

Overall hospital length of stay

Estimates of the overall hospital LoS are summarised in Fig. 2. Where provided, the overall study estimate of LoS for each discharge status is presented. For three

studies, LoS was only reported within specific patient subgroups (relating to cardiac injury [42], COVID-19 recovery trajectory [43] and treatment comparison arms [44]), therefore in these cases we include both estimates. The longest stays were recorded in a study of five critically ill patients [45], of whom only three were discharged and all more than 50 days after admission, which does not appear representative of the overall distribution (see Fig. 2, Shen *et al.* (2020-01-20)). Excluding this study, the median duration of hospitalisation ranged from 5 to 29 days. There was no observed trend with respect to when the study was conducted (Fig 2).

Estimates for LoS amongst patients who died in hospital were generally shorter than those for patients who were discharged alive, with medians between 4 and 21 days compared to 4 and 53 days, respectively. This difference is apparent in Fig. 2, where median LoS was lower for those discharged alive in 6 out of 8 studies that reported both outcomes. In studies that reported general hospital LoS by disease severity (11 studies, Supplementary Fig. A), there was a trend towards more severe cases having longer LoS. However, the definition of different levels of severity was inconsistent between studies so it is not possible to draw any confident conclusion.

Visual inspection of the study estimates suggested some evidence of a difference between general hospital LoS reported within and outside China, but studies outside China were too few (5/48) for a formal comparison. However, LoS reported within the ISARIC report [27] in particular (which includes contributed data from 25 countries, but with the majority of patients from the UK) gave a median and IQR (4 days (1 - 9)) substantially lower than the weighted mean from the studies from China (15.3 days).

The patient populations observed in these studies covered a wide range of ages, including three pediatric studies [29–31]. Among patients discharged alive there appears to be little difference in average LoS between studies with the youngest and oldest patients, but the longest estimates came from studies with average age in the upper end of the range (Wang *et al.* [39] and Shi *et al.* [44], with average age of 68 and 69, respectively; Supplementary Fig. B). The LoS estimates which included non-survivors tended to come from studies with older populations, as is to be expected given the well-documented, age-dependent fatality rate [46].

ICU length of stay

Median stay in ICU ranged from 5 (IQR 2 - 9) to 19 (No IQR reported) days. There appeared to be less of a difference according to discharge status (alive or dead) than there was for general LoS (Fig. 3). A total of 8 studies reported ICU LoS estimates, with the same number of studies reporting LoS estimates from China and outside of China, and the resulting overall estimates are very similar. There were too few studies to conduct any comparison by age or disease severity.

Figure 3: ICU stay estimates

Estimated distributions

Estimated summary hospital LoS distributions for studies from China and studies outside China are shown in Fig. 4. The median and IQR for general hospital was estimated to be 14 (10-19) for China and 5 (3-9) excluding China. This was also repeated for ICU LoS, with a median and IQR 8 (5-13) for China and 7 (4-11)

outside China. Studies from China which had complete follow-up with respect to general hospital LoS were compared with studies with incomplete follow-up. A slight difference was observed, with shorter median LoS observed in studies with complete follow-up (median, 12; IQR 8 -17) compared with incomplete follow-up (median, 14; IQR, 10-19; Supplementary Fig. C). This was only performed for general hospital LoS in China, since no studies from outside China reported completed LoS for ICU.

For general hospital LoS in China, five studies were not included since they only provided point estimates for the LoS. The point estimates from four of these studies fell within the IQR of the estimated distribution, however, for [45], the point estimate was much longer. For general LoS outside of China, one study reported only a point estimate [33], and this also fell outside of the estimated IQR. Sensitivity analysis showed that weighting by sample size had minimal influence on the shape of these distributions (Supplementary Fig. D).

Figure 4: Summary distributions

Discussion

Summary of findings

Understanding how long patients hospitalised with COVID-19 remain in hospital is critical for planning and predicting bed occupancy as well as associated staff and equipment needs. This review found that hospital LoS observations for COVID-19 patients published in the literature to date varied from less than a week to nearly two months. Stay in intensive care was shorter and less variable, with studies reporting medians of one to three weeks. Where LoS was reported according to discharge status, stay was found to be shorter for those who died than for those discharged alive; however, this difference was only apparent in terms of overall stay and not stay in ICU (no statistical comparison was made). With respect to practical implications, knowledge of a difference between survivors and non-survivors is of less use since the outcome will not be known in advance in order to influence decision-making. To the authors' knowledge, this is the first formal review that has been conducted on hospital LoS for COVID-19.

The included studies yield some evidence of a difference between total hospital LoS observed in China and outside of China, with shorter LoS reported in the latter group (14 days (10-19) versus 5 days (3-9), respectively). However, only five studies were identified which reported LoS outside of China therefore this comparison is somewhat inconclusive. It may be that LoS is longer in China compared with other settings due to different criteria for hospital admission and discharge. A consensus exists across guidelines, such as ensuring resolution of symptoms and evidence of two negative PCR samples at least 24 hours apart before discharge [47,48], however, differences between settings may arise as a result of local capacity and strain on the health system. We attempted to capture this difference by recording time from onset of symptoms to admission, however, only one study outside of China reported this and a comparison was not possible. It is also possible that, with foresight from witnessing the Chinese epidemic, other countries set less strict criteria for discharge, in anticipation of stretched capacity. Other countries may also have used evidence from China to improve treatment methods and hence shorten LoS. However, this unfortunately appears unlikely as we did not observe a trend when looking at the reported LoS estimates over time.

In contrast, no difference was observed between settings for ICU LoS, for which there were an equal number of studies included from within and outside China. It is important to note that there might be key differences between ICUs in China compared with other countries, yet a definition for what constituted an ICU was rarely reported. Previous studies have found that ICU characteristics varied widely across geographic regions [49]. Further understanding of characteristics of ICUs reporting LoS for patients with COVID-19 are important in providing context on the reported estimates and should be investigated in future studies.

There appeared to be little difference of LoS observed by age in our results, apart from the fact that studies which reported deaths tended to have older patient populations. However, if there is indeed a trend we were unlikely to observe strong evidence for it amongst these studies, since the majority include a similar mix of ages, often tending towards older cohorts, and the age distribution was not always provided for the specific subgroup who had LoS recorded. Two studies [27,38] were included in the review which reported LoS by age, and they both found longer LoS associated with older age groups. In addition, a study of LoS from the USA which was published after the search dates also reported a trend for longer LoS in older age groups [50].

Limitations and biases

Having been the first country to observe this novel coronavirus, published data on COVID-19 patient outcomes in China is more widely available than from countries to which the epidemic spread later on. The set of studies found in this review reflects this bias towards evidence obtained from China, particularly Wuhan. As more studies emerge from a broader range of settings it would be important to re-evaluate LoS estimates, as there are likely to be between-country differences that we have not captured here.

Furthermore, a number of studies include patients from the same hospital over the same period, for example, Yang *et al.* [51] and Wu *et al.* [52] who both reported patients from Jin Yin Tan hospital in Wuhan), and it is possible that these studies had overlapping study populations. Furthermore, Guan *et al.* [36] was a national study conducted in China and ISARIC [27] included 25 countries world-wide, therefore these studies may also include patients previously described. The effect of this double-counting would be to bias the summary statistics towards the LoS from these settings. Although this is acknowledged as an issue, this was not considered as an exclusion criteria as it would have resulted in the exclusion of many studies. The overall benefit of inclusion was deemed to out-weigh the potential biases which may arise as a result of overlapping patient populations.

In this review we were only able to distinguish between “general hospital LoS” and “ICU LoS”, with many studies only reporting an overall LoS. This overall LoS will include both general hospital and ICU admissions within it. There is a need for more granularity with respect to patient pathways, distinguishing between admissions to different levels of care within one hospital episode in order to better inform healthcare contingencies. Patients may, for example, be transferred to ICU on more than one occasion during their stay, which is important to factor in when ICU capacity is particularly limited.

Changes in hospital demand may have also affected our estimates. At the beginning of the outbreak and in certain settings, hospitals were being used to isolate patients who were unable to isolate effectively at home [11, 12]. This means that LoS for patients in some of the earlier studies within this dataset could have been longer due to this logistical reason, rather than clinical need. Studies which mentioned this explicitly were excluded, yet there may still be others which were not so transparent. In addition, it is possible that, as hospitals reach the limits of their capacity, a more stringent triage policy may be implemented and the most critical patients may not be transferred to ICU. Despite this, we did not observe a trend when looking at the reported LoS estimates over time, suggesting that this is not in fact an important issue in our data.

Finally, many studies had incomplete follow-up with respect to LoS and, as a result, patients still hospitalised at the end of the study were not included in the summary statistics (right-truncation). This will bias estimates towards shorter LoS, as patients with longer LoS will not be included. A study by Lapidus *et al.* [53] investigated the bias associated with estimating average ICU LoS for COVID-19 patients based on observed LoS of discharged patients before follow-up of the entire patient cohort was completed. As expected, the authors found that the average LoS estimated at three months of follow-up was much longer than that estimated at one month. This potentially affects our estimates, given that 37 (out of 52) studies had incomplete follow-up with regards to LoS; although on comparison the difference between the groups was slight, and estimates where follow-up was complete were overall shorter. Several studies included still-hospitalised patients in their LoS summary without accounting for censoring [33, 34, 36–41], which potentially alters interpretation of the values.

Summarising length of stay

We found that LoS is often not the primary measure of interest in studies which report it, however it is an important parameter when it comes to forecasting bed occupancy during an outbreak. By conducting this review we have systematically gathered a range of published estimates, providing a source from which researchers and decision makers can obtain estimates specific to their population of interest (e.g. with respect to comorbidities) and allowing comparison of LoS between several different populations and settings.

There have been numerous previous studies which have aimed to forecast the number of hospital beds required for COVID-19 patients [16–22, 54]. Many of these studies published so far have used point estimates, only originating from one study which often does not reflect the context of interest. In particular, many used estimates from Zhou *et al.* [55] which reported a shorter general hospital LoS (median 11.0, IQR 7.0–14.0; Fig. 2), and a comparable ICU LoS (median 8.0, IQR 4.0–12.0; Fig. 3), compared with other studies from China. However, both of these were still longer than LoS estimates reported by studies outside of China. This means that the bed-forecasting studies relying on LoS estimates from Zhou *et al.* may be over-estimating the number of beds required. The LoS estimate is a critical parameter within a bed forecasting model, and as such any model is likely to be very sensitive to the value or distribution being assumed, with huge implications for policy and planning.

This review has highlighted several potential sources of variation in LoS, and identified common issues and biases which influence each individual estimate. This gives a motivation for considering a wider range of values than can be obtained in a single study, aiming instead to capture the overall distribution of LoS across a variety of possible patient trajectories. Here we have included estimates of the overall LoS distribution in two settings (China/Other) for which we obtained sufficient data.

It is preferable to use data from the setting for which you are trying to forecast bed occupancy (as was done by the IHME COVID-19 health service utilization forecasting team [15]), however data on completed patient stays will often not be available until well after the onset of the epidemic. Furthermore, LMICs may have reduced capacity for surveillance and monitoring in order to obtain these data. In such cases, where countries are in the early stages of an outbreak, it would be better to use a conservative (i.e broad) distribution of LoS from another setting. As the pandemic progresses and more countries observe patients completing their hospital episodes, it will be possible to add further setting-specific summaries and improve this distribution.

As far as the authors are aware, the approach demonstrated here to summarise median and IQRs across multiple studies has not been proposed before, although there are similarities with the approach taken by others in the CMMID Working Group to pool R_0 estimates [56]. We present an intuitive method which exploits two optimisation methods to fit parametric distributions based on reported summary statistics rather than individual data, then samples across them. In this way we capture the central tendency and overall variation between a set of quantiles from different study populations. This allows multiple sources of evidence to be consolidated into a single distribution which can be used in bed forecasting going forward. By providing both the code for this analysis and our summary distributions, better bed occupancy predictions can be made in the future.

Conclusion

This review summarised the available literature to provide estimates of LoS for general admission and ICU which can be applied for planning and preparedness for SARS-CoV-2. We found substantial differences between China and other settings in terms of total hospital stay, but little evidence for an impact on LoS of time of study, age or disease severity. We present summary distributions which can be used within models making predictions about bed requirements, and suggest that this may be a more robust and realistic way to characterise LoS than relying on summary data from just one setting or hospital. The majority of the data presented in this review comes from China and, as more data become available, it will be important to update this with setting-specific LoS estimates. Understanding the duration of hospitalisation of COVID-19 patients is critical for providing insights as to when hospitals will reach capacity, as well predicting associated staff or equipment requirements.

Competing interests

The authors declare that they have no competing interests.

Author's contributions

EMR - Conceptualization, Methodology, Literature search, Literature screening, Data extraction, Data analysis, Visualisation, Interpretation, Writing—original draft ESN - Methodology, Literature search, Literature screening, Data extraction, Data analysis, Visualisation, Interpretation, Writing—original draft YJ - Literature screening, Data extraction, Interpretation, Writing—review and editing NRW - Methodology, Data analysis, Visualisation, Writing—review and editing SC - Methodology, Writing—review and editing CABP - Code review, Writing—review and editing CMMID Working Group - Each contributed in processing, cleaning and interpretation of data, interpreted findings, contributed to the manuscript, and approved the work for publication TJ - Methodology, Code review, Writing—review and editing GMK - Conceptualization, Methodology, Interpretation, Writing—review and editing SRP - Conceptualization, Methodology, Literature screening, Data extraction, Interpretation, Writing—review and editing

Funding statement

EMR receives funding from the Medical Research Council London Intercollegiate Doctoral Training Program (MR/N013638/1). ESN receives funding from the Bill and Melinda Gates Foundation via the SPEAK India Consortium (OPP1183986). YJ receives funding from Janssen Pharmaceutica. NRW receives funding from the UK Medical Research Council (MR/N013638/1). SC receives funding from the Wellcome Trust (208812/Z/17/Z). CABP receives funding from Bill and Melinda Gates Foundation NTD Modelling Consortium OPP1184344 and DFID/Wellcome Trust: Epidemic Preparedness Coronavirus research programme 221303/Z/20/Z. TJ receives funding from the UK Public Health Rapid Support Team, NIHR Health Protection Research Unit for Modelling Methodology (HPRU-2012-10096), and the UK Economic and Social Research Council (ES/P010873/1). SRP receives funding from the Bill and Melinda Gates Foundation (OPP1180644). GMK receives funding from the UK Medical Research Council (MR/P014658/1).

Acknowledgements

The authors gratefully acknowledge funding of the SPEAK India Consortium by the Bill and Melinda Gates Foundation (OPP1183986) for publication of this work.

We would also like to acknowledge the other members of the London School of Hygiene and Tropical Medicine COVID-19 modelling group, within the Centre for Mathematical Modelling of Infectious Diseases (CMMID working group), who contributed to this work: Rosalind M Eggo (HDR UK: MR/S003975/1, UK MRC: MC_PC19065), Megan Auzenbergs (BMGF: OPP1191821), Billy J Quilty (NIHR: 16/137/109), Nicholas G. Davies (NIHR: Health Protection Research Unit for Modelling Methodology HPRU-2012-10096), Mark Jit (BMGF: INV-003174, NIHR: 16/137/109, European Commission: 101003688), Jon C Emery (ERC Starting Grant: 757699), Petra Klepac (Royal Society: RP/EA/180004, European Commission: 101003688), Sam Abbott (Wellcome Trust: 210758/Z/18/Z), Sophie R Meakin (Wellcome Trust: 210758/Z/18/Z), Anna M Foss, Fiona Yueqian Sun (NIHR: 16/137/109), Stéphane Hué, Kathleen O'Reilly (BMGF: OPP1191821), Amy Gimma (Global Challenges Research Fund: ES/P010873/1), Adam J Kucharski (Wellcome Trust: 206250/Z/17/Z), Kiesha Prem (BMGF: INV-003174, European Commission: 101003688), Christopher I Jarvis (Global Challenges Research Fund: ES/P010873/1), Damien C Tully, Sebastian Funk (Wellcome Trust: 210758/Z/18/Z), David Simons (BBSRC LIDP: BB/M009513/1), Arminde K Deol, Alicia Rosello (NIHR: PR-OD-1017-20002), W John Edmunds (European Commission: 101003688), Joel Hellewell (Wellcome Trust: 210758/Z/18/Z), Timothy W Russell (Wellcome Trust: 206250/Z/17/Z), Graham Medley (BMGF: NTD Modelling Consortium OPP1184344), C Julian Villabona-Arenas (ERC Starting Grant: 757688), Kevin van Zandvoort (Elrha R2HC/UK DFID/Wellcome Trust/NIHR, DFID/Wellcome Trust: Epidemic Preparedness Coronavirus research programme 221303/Z/20/Z), Katherine E. Atkins (ERC Starting Grant: 757688), Quentin J Leclerc (UK MRC: LID DTP MR/N013638/1), Nikos I Bosse (Wellcome Trust: 210758/Z/18/Z), Yang Liu (BMGF: INV-003174, NIHR: 16/137/109, European Commission: 101003688), Akira Endo (Nakajima Foundation, Alan Turing Institute), Hamish P Gibbs (UK DHSC/UK Aid/NIHR: ITCRZ 03010), Charlie Diamond (NIHR: 16/137/109), Rachel Lowe (Royal Society: Dorothy Hodgkin Fellowship), Stefan Flasche (Wellcome Trust: 208812/Z/17/Z), Rein M G J Houben (ERC Starting Grant: 757699), James D Munday (Wellcome Trust: 210758/Z/18/Z).

Author details

¹Department of Infectious Disease Epidemiology, London School of Hygiene and Tropical Medicine, Keppel Street, London, UK. ²Department of Global Health and Development, London School of Hygiene and Tropical Medicine, Keppel Street, London, UK. ³South African DSI-NRF Centre of Excellence in Epidemiological Modelling and Analysis (SACEMA), Stellenbosch University, Stellenbosch, RSA. ⁴UK Public Health Rapid Support Team, London, United Kingdom. ⁵MRC Centre for Global Infectious Disease Analysis, Department of Infectious Disease Epidemiology, School of Public Health, Imperial College, London, UK.

References

1. Organization, W.H.: Coronavirus disease (COVID-2019) situation report 99 (2020). https://www.who.int/docs/default-source/coronaviruse/situation-reports/20200428-sitrep-99-covid-19.pdf?sfvrsn=119fc381_2
2. Xie, J., Tong, Z., Guan, X., Du, B., Qiu, H., Slutsky, A.S.: Critical care crisis and some recommendations during the COVID-19 epidemic in China. *Intensive Care Medicine* (2020). doi:10.1007/s00134-020-05979-7. Accessed 2020-04-25
3. Qiu, H., Tong, Z., Ma, P., Hu, M., Peng, Z., Wu, W., Du, B., China Critical Care Clinical Trials Group (CCCCCTG): Intensive care during the coronavirus epidemic. *Intensive Care Medicine* **46**(4), 576–578 (2020). doi:10.1007/s00134-020-05966-y. Accessed 2020-04-25
4. Remuzzi, A., Remuzzi, G.: COVID-19 and Italy: what next? *The Lancet* **395**(10231), 1225–1228 (2020). doi:10.1016/S0140-6736(20)30627-9. Publisher: Elsevier. Accessed 2020-04-25

5. Paterlini, M.: On the front lines of coronavirus: the Italian response to covid-19. *BMJ* **368** (2020). doi:10.1136/bmj.m1065. Publisher: British Medical Journal Publishing Group Section: Feature. Accessed 2020-04-25
6. Legido-Quigley, H., Mateos-García, J.T., Campos, V.R., Gea-Sánchez, M., Muntaner, C., McKee, M.: The resilience of the Spanish health system against the COVID-19 pandemic. *The Lancet Public Health* **0**(0) (2020). doi:10.1016/S2468-2667(20)30060-8. Publisher: Elsevier. Accessed 2020-04-25
7. Rosenbaum, L.: Facing Covid-19 in Italy — Ethics, Logistics, and Therapeutics on the Epidemic's Front Line. *New England Journal of Medicine* **0**(0), (2020). doi:10.1056/NEJMp2005492. Publisher: Massachusetts Medical Society eprint: <https://doi.org/10.1056/NEJMp2005492>. Accessed 2020-04-24
8. Rodriguez-Morales, A.J., Cardona-Ospina, J.A., Gutiérrez-Ocampo, E., Villamizar-Peña, R., Holguin-Rivera, Y., Escalera-Antezana, J.P., Alvarado-Arnez, L.E., Bonilla-Aldana, D.K., Franco-Paredes, C., Henao-Martínez, A.F., Paniz-Mondolfi, A., Lagos-Grisales, G.J., Ramírez-Vallejo, E., Suárez, J.A., Zambrano, L.I., Villamil-Gómez, W.E., Balbin-Ramón, G.J., Rabaan, A.A., Harapan, H., Dhama, K., Nishiura, H., Kataoka, H., Ahmad, T., Sah, R.: Clinical, laboratory and imaging features of COVID-19: A systematic review and meta-analysis. *Travel Medicine and Infectious Disease*, 101623 (2020). doi:10.1016/j.tmaid.2020.101623. Accessed 2020-04-27
9. Cascella, M., Rajnik, M., Cuomo, A., Dulebohn, S.C., Di Napoli, R.: Features, Evaluation and Treatment Coronavirus (COVID-19). In: StatPearls Publishing, Treasure Island (FL) (2020). <http://www.ncbi.nlm.nih.gov/books/NBK554776/> Accessed 2020-04-27
10. Jiang, F., Deng, L., Zhang, L., Cai, Y., Cheung, C.W., Xia, Z.: Review of the Clinical Characteristics of Coronavirus Disease 2019 (COVID-19). *Journal of General Internal Medicine* (2020). doi:10.1007/s11606-020-05762-w. Accessed 2020-04-27
11. Chen, S., Zhang, Z., Yang, J., Wang, J., Zhai, X., Bärnighausen, T., Wang, C.: Fangcang shelter hospitals: a novel concept for responding to public health emergencies. *The Lancet* **395**(10232), 1305–1314 (2020). doi:10.1016/S0140-6736(20)30744-3. Publisher: Elsevier. Accessed 2020-04-28
12. Wu, Z., McGoogan, J.M.: Characteristics of and Important Lessons From the Coronavirus Disease 2019 (COVID-19) Outbreak in China: Summary of a Report of 72 314 Cases From the Chinese Center for Disease Control and Prevention. *JAMA* **323**(13), 1239–1242 (2020). doi:10.1001/jama.2020.2648. Publisher: American Medical Association. Accessed 2020-04-27
13. Yang, J., Zheng, Y., Gou, X., Pu, K., Chen, Z., Guo, Q., Ji, R., Wang, H., Wang, Y., Zhou, Y.: Prevalence of comorbidities and its effects in coronavirus disease 2019 patients: A systematic review and meta-analysis. *International Journal of Infectious Diseases* **94**, 91–95 (2020). doi:10.1016/j.ijid.2020.03.017. Accessed 2020-04-27
14. Clark, A., Jit, M., Warren-Gash, C., Guthrie, B., Wang, H.H., Mercer, S.W., Sanderson, C., McKee, M., Troeger, C., Ong, K.I., Checchi, F., Perel, P., Joseph, S., Gibbs, H.P., Banerjee, A., Group, L.C.C.-w., Eggo, R.M.: How many are at increased risk of severe COVID-19 disease? Rapid global, regional and national estimates for 2020. medRxiv, 2020–041820064774 (2020). doi:10.1101/2020.04.18.20064774. Accessed 2020-04-30
15. IHME COVID-19 health service utilization forecasting team, Murray, C.J.: Forecasting COVID-19 impact on hospital bed-days, ICU-days, ventilator-days and deaths by US state in the next 4 months. preprint, *Infectious Diseases (except HIV/AIDS)* (March 2020). doi:10.1101/2020.03.27.20043752. <http://medrxiv.org/lookup/doi/10.1101/2020.03.27.20043752> Accessed 2020-04-29
16. Deasy, J., Rocheteau, E., Kohler, K., Stubbs, D.J., Barbiero, P., Liò, P., Ercole, A.: Forecasting ultra-early intensive care strain from COVID-19 in England. medRxiv, 2020–031920039057 (2020). doi:10.1101/2020.03.19.20039057
17. Ferstad, J.O., Gu, A.J., Lee, R.Y., Thapa, I., Shin, A.Y., Salomon, J.A., Glynn, P., Shah, N.H., Milstein, A., Schulman, K., Scheinker, D.: A model to forecast regional demand for COVID-19 related hospital beds. medRxiv, 2020–032620044842 (2020). doi:10.1101/2020.03.26.20044842
18. Weissman, G.E., Crane-Droesch, A., Chivers, C., Luong, T., Hanish, A., Levy, M.Z., Lubken, J., Becker, M., Draugelis, M.E., Anesi, G.L., Brennan, P.J., Christie, J.D., Hanson III, C.W., Mikkelsen, M.E., Halpern, S.D.: Locally Informed Simulation to Predict Hospital Capacity Needs During the COVID-19 Pandemic. *Annals of Internal Medicine* (2020). doi:10.7326/M20-1260. Accessed 2020-04-30
19. Massonnaud, C., Roux, J., Crépey, P.: COVID-19: Forecasting short term hospital needs in France. medRxiv, 2020–031620036939 (2020). doi:10.1101/2020.03.16.20036939
20. Moghadas, S.M., Shoukat, A., Fitzpatrick, M.C., Wells, C.R., Sah, P., Pandey, A., Sachs, J.D., Wang, Z., Meyers, L.A., Singer, B.H., Galvani, A.P.: Projecting hospital utilization during the COVID-19 outbreaks in the United States. *Proceedings of the National Academy of Sciences* **117**(16), 9122–9126 (2020). doi:10.1073/pnas.2004064117. Publisher: National Academy of Sciences Section: Biological Sciences. Accessed 2020-04-29
21. Shoukat, A., Wells, C.R., Langley, J.M., Singer, B.H., Galvani, A.P., Moghadas, S.M.: Projecting demand for critical care beds during COVID-19 outbreaks in Canada. *CMAJ* (2020). doi:10.1503/cmaj.200457. Publisher: CMAJ Section: Original Articles. Accessed 2020-04-29
22. Castro, M.C., Carvalho, L.R.d., Chin, T., Kahn, R., Franca, G.V.A., Macario, E.M., Oliveira, W.K.d.: Demand for hospitalization services for COVID-19 patients in Brazil. medRxiv, 2020–033020047662 (2020). doi:10.1101/2020.03.30.20047662. Accessed 2020-04-29
23. Marazzi, A., Paccaud, F., Ruffieux, C., Beguin, C.: Fitting the distributions of length of stay by parametric models. *Medical Care* **36**(6), 915–927 (1998). doi:10.1097/00005650-199806000-00014
24. Macdonald, P., Du, w.c.f.J.: *mixdist: Finite Mixture Distribution Models* (2018). <https://CRAN.R-project.org/package=mixdist> Accessed 2020-04-30
25. Locke, S., FitzJohn, R., Cori, A., Jombart, T.: *distcrete: Discrete Distribution Approximations* (2017). <https://CRAN.R-project.org/package=distcrete> Accessed 2020-04-30
26. R: stats package | R Documentation. <https://www.rdocumentation.org/packages/stats/versions/3.6.2> Accessed 2020-04-30

27. Consortium, I.S.A.R.a.E.I.: COVID-19 Report. Technical report (April 2020). https://media.tghn.org/medialibrary/2020/04/ISARIC_DataPlatform_COVID-19_reports_APR20.pdf
28. Centre, I.C.N.A.R.: ICNARC report on COVID-19 in critical care. Technical report (April 2020). <https://www.icnarc.org/DataServices/Attachments/Download/c9b491af-ea80-ea11-9124-00505601089b>
29. Qiu, H., Wu, J., Hong, L., Luo, Y., Song, Q., Chen, D.: Clinical and epidemiological features of 36 children with coronavirus disease 2019 (COVID-19) in Zhejiang, China: an observational cohort study. *The Lancet Infectious Diseases* 0(0) (2020). doi:10.1016/S1473-3099(20)30198-5. Publisher: Elsevier. Accessed 2020-04-24
30. Shi, Y., Wang, X., Liu, G., Zhu, Q., Wang, J., Yu, H., Wang, C., Wang, L., Zhang, M., Zhang, L., Lu, G., Lu, Z., Yu, J., Qiao, Z., Gu, Y., Shen, G., Xu, H., Zeng, M., Zhai, X., Huang, G.: A quickly, effectively screening process of novel corona virus disease 2019 (COVID-19) in children in Shanghai, China. *Annals of Translational Medicine* 8(5), 241 (2020). doi:10.21037/atm.2020.03.22. Number: 5. Accessed 2020-04-24
31. Xia, W., Shao, J., Guo, Y., Peng, X., Li, Z., Hu, D.: Clinical and CT features in pediatric patients with COVID-19 infection: Different points from adults. *Pediatric Pulmonology* 55(5), 1169–1174 (2020). doi:10.1002/ppul.24718. eprint: <https://onlinelibrary.wiley.com/doi/pdf/10.1002/ppul.24718>. Accessed 2020-04-24
32. Grasselli, G., Zangrillo, A., Zanella, A., Antonelli, M., Cabrini, L., Castelli, A., Cereda, D., Coluccello, A., Foti, G., Fumagalli, R., Iotti, G., Latronico, N., Lorini, L., Merler, S., Natalini, G., Piatti, A., Ranieri, M.V., Scandroglio, A.M., Storti, E., Cecconi, M., Pesenti, A., for the COVID-19 Lombardy ICU Network: Baseline Characteristics and Outcomes of 1591 Patients Infected With SARS-CoV-2 Admitted to ICUs of the Lombardy Region, Italy. *JAMA* (2020). doi:10.1001/jama.2020.5394. Accessed 2020-04-26
33. Spiteri, G., Fielding, J., Diercke, M., Campese, C., Enouf, V., Gaymard, A., Bella, A., Sognamiglio, P., Sierra Moros, M.J., Riutort, A.N., Demina, Y.V., Mahieu, R., Broas, M., Bengnér, M., Buda, S., Schilling, J., Fileul, L., Lepoutre, A., Saura, C., Mailles, A., Levy-Bruhl, D., Coignard, B., Bernard-Stoeklin, S., Behillil, S., van der Werf, S., Valette, M., Lina, B., Riccardo, F., Nicastrì, E., Casas, I., Larrauri, A., Salom Castell, M., Pozo, F., Maksyutov, R.A., Martin, C., Van Ranst, M., Bossuyt, N., Siira, L., Sane, J., Tegmark-Wisell, K., Palmérus, M., Broberg, E.K., Beauté, J., Jorgensen, P., Bundle, N., Pereyaslov, D., Adlhoç, C., Pukkila, J., Pebody, R., Olsen, S., Ciancio, B.C.: First cases of coronavirus disease 2019 (COVID-19) in the WHO European Region, 24 January to 21 February 2020. *Eurosurveillance* 25(9), 2000178 (2020). Type: doi:<https://doi.org/10.2807/1560-7917.ES.2020.25.9.2000178>
34. Bhatraju, P.K., Ghassemieh, B.J., Nichols, M., Kim, R., Jerome, K.R., Nalla, A.K., Greninger, A.L., Pipavath, S., Wurfel, M.M., Evans, L., Kritek, P.A., West, T.E., Luks, A., Gerbino, A., Dale, C.R., Goldman, J.D., O'Mahony, S., Mikacenic, C.: Covid-19 in Critically Ill Patients in the Seattle Region — Case Series. *New England Journal of Medicine* 0(0), (2020). doi:10.1056/NEJMoa2004500. Publisher: Massachusetts Medical Society eprint: <https://www.nejm.org/doi/pdf/10.1056/NEJMoa2004500>. Accessed 2020-04-24
35. Petrilli, C.M., Jones, S.A., Yang, J., Rajagopalan, H., O'Donnell, L.F., Chernyak, Y., Tobin, K., Cerfolio, R.J., Francois, F., Horwitz, L.I.: Factors associated with hospitalization and critical illness among 4,103 patients with COVID-19 disease in New York City. medRxiv, 2020-040820057794 (2020). doi:10.1101/2020.04.08.20057794
36. Guan, W.-j., Ni, Z.-y., Hu, Y., Liang, W.-h., Ou, C.-q., He, J.-x., Liu, L., Shan, H., Lei, C.-l., Hui, D.S.C., Du, B., Li, L.-j., Zeng, G., Yuen, K.-Y., Chen, R.-c., Tang, C.-l., Wang, T., Chen, P.-y., Xiang, J., Li, S.-y., Wang, J.-l., Liang, Z.-j., Peng, Y.-x., Wei, L., Liu, Y., Hu, Y.-h., Peng, P., Wang, J.-m., Liu, J.-y., Chen, Z., Li, G., Zheng, Z.-j., Qiu, S.-q., Luo, J., Ye, C.-j., Zhu, S.-y., Zhong, N.-s.: Clinical Characteristics of Coronavirus Disease 2019 in China. *New England Journal of Medicine* 0(0), (2020). doi:10.1056/NEJMoa2002032. Publisher: Massachusetts Medical Society eprint: <https://doi.org/10.1056/NEJMoa2002032>. Accessed 2020-04-26
37. Liu, F., Xu, A., Zhang, Y., Xuan, W., Yan, T., Pan, K., Yu, W., Zhang, J.: Patients of COVID-19 may benefit from sustained lopinavir-combined regimen and the increase of eosinophil may predict the outcome of COVID-19 progression. *International Journal of Infectious Diseases*, 1201971220301326 (2020). doi:10.1016/j.ijid.2020.03.013. Accessed 2020-04-25
38. Wang, Z., Ji, J.S., Liu, Y., Liu, R., Zha, Y., Chang, X., Zhang, L., Zhang, Y., Zeng, J., Dong, T., Xu, X., Zhou, L., He, J., Deng, Y., Zhong, B., Wu, X.: Survival analysis of hospital length of stay of novel coronavirus (COVID-19) pneumonia patients in Sichuan, China. medRxiv, 2020-040720057299 (2020). doi:10.1101/2020.04.07.20057299
39. Wang, L., He, W., Yu, X., Hu, D., Bao, M., Liu, H., Zhou, J., Jiang, H.: Coronavirus disease 2019 in elderly patients: Characteristics and prognostic factors based on 4-week follow-up. *The Journal of Infection* (2020). doi:10.1016/j.jinf.2020.03.019
40. Yin, M., Zhang, L., Deng, G., Han, C., Shen, M., Sun, H., Zeng, F., Zhang, W., Chen, L., Luo, Q., Yao, D., Wu, M., Yu, S., Chen, H., Baud, D., Chen, X.: Severe Acute Respiratory Syndrome Coronavirus 2 (SARS-CoV-2) Infection During Pregnancy In China: A Retrospective Cohort Study. medRxiv, 2020-040720053744 (2020). doi:10.1101/2020.04.07.20053744
41. Zhang, D., Guo, R., Lei, L., Liu, H., Wang, Y., Wang, Y., Dai, T., Zhang, T., Lai, Y., Wang, J., Liu, Z., He, A., O'Dwyer, M., Hu, J.: COVID-19 infection induces readily detectable morphological and inflammation-related phenotypic changes in peripheral blood monocytes, the severity of which correlate with patient outcome. medRxiv, 2020-032420042655 (2020). doi:10.1101/2020.03.24.20042655
42. Shi, S., Qin, M., Shen, B., Cai, Y., Liu, T., Yang, F., Gong, W., Liu, X., Liang, J., Zhao, Q., Huang, H., Yang, B., Huang, C.: Association of Cardiac Injury With Mortality in Hospitalized Patients With COVID-19 in Wuhan, China. *JAMA cardiology* (2020). doi:10.1001/jamacardio.2020.0950
43. Shi, H., Han, X., Jiang, N., Cao, Y., Alwalid, O., Gu, J., Fan, Y., Zheng, C.: Radiological findings from 81 patients with COVID-19 pneumonia in Wuhan, China: a descriptive study. *The Lancet. Infectious diseases* 20(4), 425–434 (2020)
44. Shi, C., Wang, C., Wang, H., Yang, C., Cai, F., Zeng, F., Cheng, F., Liu, Y., Zhou, T., Deng, B., Vlodavsky, I., Li, J., Zhang, Y.: The potential of low molecular weight heparin to mitigate cytokine storm in severe COVID-19 patients: a retrospective clinical study. medRxiv, 2020-032820046144 (2020).

- doi:10.1101/2020.03.28.20046144
45. Shen, C., Wang, Z., Zhao, F., Yang, Y., Li, J., Yuan, J., Wang, F., Li, D., Yang, M., Xing, L., Wei, J., Xiao, H., Yang, Y., Qu, J., Qing, L., Chen, L., Xu, Z., Peng, L., Li, Y., Zheng, H., Chen, F., Huang, K., Jiang, Y., Liu, D., Zhang, Z., Liu, Y., Liu, L.: Treatment of 5 Critically Ill Patients With COVID-19 With Convalescent Plasma. *JAMA* (2020). doi:10.1001/jama.2020.4783. Accessed 2020-04-28
 46. CDC: Coronavirus Disease 2019 (COVID-19) (2020). <https://www.cdc.gov/coronavirus/2019-ncov/need-extra-precautions/people-at-higher-risk.html> Accessed 2020-04-30
 47. for Disease Prevention and Control, E.C.: Discharge criteria for confirmed COVID-19 cases. Technical report (October 2020). <https://www.ecdc.europa.eu/sites/default/files/documents/COVID-19-Discharge-criteria.pdf>
 48. Commission, C.N.H.: COVID-19 Diagnostic Guidelines (Version 3) (2020). <http://www.chinacdc.cn/jkzt/crb/zl/szkb11803/jsszl11815/202001/W0200123581113562555.pdf>
 49. Sakr, Y., Moreira, C.L., Rhodes, A., Ferguson, N.D., Kleinpell, R., Pickkers, P., Kuiper, M.A., Lipman, J., Vincent, J.-L.: The Impact of Hospital and ICU Organizational Factors on Outcome in Critically Ill Patients: Results From the Extended Prevalence of Infection in Intensive Care Study*. *Critical Care Medicine* **43**(3), 519–526 (2015). doi:10.1097/CCM.0000000000000754. Accessed 2020-04-30
 50. Lewnard, J.A., Liu, V.X., Jackson, M.L., Schmidt, M.A., Jewell, B.L., Flores, J.P., Jentz, C., Northrup, G.R., Mahmud, A., Reingold, A.L., Petersen, M., Jewell, N.P., Young, S., Bellows, J.: Incidence, clinical outcomes, and transmission dynamics of hospitalized 2019 coronavirus disease among 9,596,321 individuals residing in California and Washington, United States: a prospective cohort study. preprint, *Epidemiology* (April 2020). doi:10.1101/2020.04.12.20062943. <http://medrxiv.org/lookup/doi/10.1101/2020.04.12.20062943> Accessed 2020-04-24
 51. Yang, X., Yu, Y., Xu, J., Shu, H., Xia, J., Liu, H., Wu, Y., Zhang, L., Yu, Z., Fang, M., Yu, T., Wang, Y., Pan, S., Zou, X., Yuan, S., Shang, Y.: Clinical course and outcomes of critically ill patients with SARS-CoV-2 pneumonia in Wuhan, China: a single-centered, retrospective, observational study. *The Lancet Respiratory Medicine* **0**(0) (2020). doi:10.1016/S2213-2600(20)30079-5. Publisher: Elsevier. Accessed 2020-04-25
 52. Wu, C., Hu, X., Song, J., Du, C., Xu, J., Yang, D., Chen, D., Zhong, M., Jiang, J., Xiong, W., Lang, K., Zhang, Y., Shi, G., Xu, L., Song, Y., Zhou, X., Wei, M., Zheng, J.: Heart injury signs are associated with higher and earlier mortality in coronavirus disease 2019 (COVID-19). *medRxiv*, 2020–022620028589 (2020). doi:10.1101/2020.02.26.20028589
 53. Lapidus, N., Zhou, X., Carrat, F., Riou, B., Zhao, Y., Hejblum, G.: Biased and unbiased estimation of the average lengths of stay in intensive care units in the COVID-19 pandemic. *medRxiv*, 2020–042120073916 (2020). doi:10.1101/2020.04.21.20073916
 54. Murray, C.J.: Forecasting COVID-19 impact on hospital bed-days, ICU-days, ventilator-days and deaths by US state in the next 4 months. *medRxiv*, 2020–032720043752 (2020). doi:10.1101/2020.03.27.20043752
 55. Zhou, F., Yu, T., Du, R., Fan, G., Liu, Y., Liu, Z., Xiang, J., Wang, Y., Song, B., Gu, X., Guan, L., Wei, Y., Li, H., Wu, X., Xu, J., Tu, S., Zhang, Y., Chen, H., Cao, B.: Clinical course and risk factors for mortality of adult inpatients with COVID-19 in Wuhan, China: a retrospective cohort study. *Lancet* (London, England) **395**(10229), 1054–1062 (2020). doi:10.1016/S0140-6736(20)30566-3
 56. Davies, N.G., Kucharski, A.J., Eggo, R.M., Gimma, A., Group, C.C.-W., Edmunds, W.J.: The effect of non-pharmaceutical interventions on COVID-19 cases, deaths and demand for hospital services in the UK: a modelling study. *medRxiv*, 2020–040120049908 (2020). doi:10.1101/2020.04.01.20049908. Accessed 2020-04-30
 57. Cai, Q., Huang, D., Ou, P., Yu, H., Zhu, Z., Xia, Z., Su, Y., Ma, Z., Zhang, Y., Li, Z., He, Q., Liu, L., Fu, Y., Chen, J.: COVID-19 in a designated infectious diseases hospital outside Hubei Province, China. *Allergy n/a*(n/a) (2020). doi:10.1111/all.14309. eprint: <https://onlinelibrary.wiley.com/doi/pdf/10.1111/all.14309>. Accessed 2020-04-25
 58. Cao, B., Wang, Y., Wen, D., Liu, W., Wang, J., Fan, G., Ruan, L., Song, B., Cai, Y., Wei, M., Li, X., Xia, J., Chen, N., Xiang, J., Yu, T., Bai, T., Xie, X., Zhang, L., Li, C., Yuan, Y., Chen, H., Li, H., Huang, H., Tu, S., Gong, F., Liu, Y., Wei, Y., Dong, C., Zhou, F., Gu, X., Xu, J., Liu, Z., Zhang, Y., Li, H., Shang, L., Wang, K., Li, K., Zhou, X., Dong, X., Qu, Z., Lu, S., Hu, X., Ruan, S., Luo, S., Wu, J., Peng, L., Cheng, F., Pan, L., Zou, J., Jia, C., Wang, J., Liu, X., Wang, S., Wu, X., Ge, Q., He, J., Zhan, H., Qiu, F., Guo, L., Huang, C., Jaki, T., Hayden, F.G., Horby, P.W., Zhang, D., Wang, C.: A Trial of Lopinavir-Ritonavir in Adults Hospitalized with Severe Covid-19. *The New England Journal of Medicine* (2020). doi:10.1056/NEJMoa2001282
 59. Cao, J., Tu, W.-J., Cheng, W., Yu, L., Liu, Y.-K., Hu, X., Liu, Q.: Clinical Features and Short-term Outcomes of 102 Patients with Corona Virus Disease 2019 in Wuhan, China. *Clinical Infectious Diseases* (2020). doi:10.1093/cid/ciaa243. Accessed 2020-04-25
 60. Chen, J., Qi, T., Liu, L., Ling, Y., Qian, Z., Li, T., Li, F., Xu, Q., Zhang, Y., Xu, S., Song, Z., Zeng, Y., Shen, Y., Shi, Y., Zhu, T., Lu, H.: Clinical progression of patients with COVID-19 in Shanghai, China. *Journal of Infection* **80**(5), 1–6 (2020). doi:10.1016/j.jinf.2020.03.004. Accessed 2020-04-24
 61. Chen, T., Wu, D., Chen, H., Yan, W., Yang, D., Chen, G., Ma, K., Xu, D., Yu, H., Wang, H., Wang, T., Guo, W., Chen, J., Ding, C., Zhang, X., Huang, J., Han, M., Li, S., Luo, X., Zhao, J., Ning, Q.: Clinical characteristics of 113 deceased patients with coronavirus disease 2019: retrospective study. *BMJ* **368** (2020). doi:10.1136/bmj.m1091. Publisher: BMJ Publishing Group Ltd eprint: <https://www.bmj.com/content/368/bmj.m1091.full.pdf>
 62. Chen, X., Zheng, F., Qing, Y., Ding, S., Yang, D., Lei, C., Yin, Z., Zhou, X., Jiang, D., Zuo, Q., He, J., Lv, J., Chen, P., Chen, Y., Peng, H., Li, H., Xie, Y., Liu, J., Zhou, Z., Luo, H.: Epidemiological and clinical features of 291 cases with coronavirus disease 2019 in areas adjacent to Hubei, China: a double-center observational study. *medRxiv*, 2020–030320030353 (2020). doi:10.1101/2020.03.03.20030353
 63. Cheng, Y., Luo, R., Wang, K., Zhang, M., Wang, Z., Dong, L., Li, J., Yao, Y., Ge, S., Xu, G.: Kidney impairment is associated with in-hospital death of COVID-19 patients. *medRxiv*, 2020–021820023242 (2020). doi:10.1101/2020.02.18.20023242

64. Deng, Y., Liu, W., Liu, K., Fang, Y.-Y., Shang, J., Zhou, L., Wang, K., Leng, F., Wei, S., Chen, L., Liu, H.-G.: Clinical characteristics of fatal and recovered cases of coronavirus disease 2019 (COVID-19) in Wuhan, China: a retrospective study. *Chinese Medical Journal Publish Ahead of Print* (2020)
65. Ding, Q., Lu, P., Fan, Y., Xia, Y., Liu, M.: The clinical characteristics of pneumonia patients coinfecting with 2019 novel coronavirus and influenza virus in Wuhan, China. *Journal of Medical Virology n/a(n/a)* (2020). doi:10.1002/jmv.25781. eprint: <https://onlinelibrary.wiley.com/doi/pdf/10.1002/jmv.25781>. Accessed 2020-04-25
66. Du, Y., Tu, L., Zhu, P., Mu, M., Wang, R., Yang, P., Wang, X., Hu, C., Ping, R., Hu, P., Li, T., Cao, F., Chang, C., Hu, Q., Jin, Y., Xu, G.: Clinical Features of 85 Fatal Cases of COVID-19 from Wuhan: A Retrospective Observational Study. *American Journal of Respiratory and Critical Care Medicine* (2020). doi:10.1164/rccm.202003-0543OC. Publisher: American Thoracic Society - AJRCCM. Accessed 2020-04-25
67. Fan, Z., Chen, L., Li, J., Cheng, X., Jingmao Yang, Tian, C., Zhang, Y., Huang, S., Liu, Z., Cheng, J.: Clinical Features of COVID-19-Related Liver Damage. *Clinical Gastroenterology and Hepatology, 1542356520304821* (2020). doi:10.1016/j.cgh.2020.04.002. Accessed 2020-04-25
68. Liu, J., Ouyang, L., Guo, P., Wu, H.s., Fu, P., Chen, Y.l., Yang, D., Han, X.y., Cao, Y.k., Alwalid, O., Tao, J., Peng, S.y., Shi, H.s., Yang, F., Zheng, C.s.: Epidemiological, Clinical Characteristics and Outcome of Medical Staff Infected with COVID-19 in Wuhan, China: A Retrospective Case Series Analysis. medRxiv, 2020-030920033118 (2020). doi:10.1101/2020.03.09.20033118
69. Liu, L., Gao, J.-y.: Clinical characteristics of 51 patients discharged from hospital with COVID-19 in ChongqingChina. medRxiv, 2020-022020025536 (2020). doi:10.1101/2020.02.20.20025536
70. Mo, P., Xing, Y., Xiao, Y., Deng, L., Zhao, Q., Wang, H., Xiong, Y., Cheng, Z., Gao, S., Liang, K., Luo, M., Chen, T., Song, S., Ma, Z., Chen, X., Zheng, R., Cao, Q., Wang, F., Zhang, Y.: Clinical characteristics of refractory COVID-19 pneumonia in Wuhan, China. *Clinical Infectious Diseases (ciaa270)* (2020). doi:10.1093/cid/ciaa270. Accessed 2020-04-26
71. Pan, F., Ye, T., Sun, P., Gui, S., Liang, B., Li, L., Zheng, D., Wang, J., Hesketh, R.L., Yang, L., Zheng, C.: Time Course of Lung Changes On Chest CT During Recovery From 2019 Novel Coronavirus (COVID-19) Pneumonia. *Radiology, 200370* (2020). doi:10.1148/radiol.2020200370. Publisher: Radiological Society of North America. Accessed 2020-04-25
72. Qi, D., Yan, X., Tang, X., Peng, J., Yu, Q., Feng, L., Yuan, G., Zhang, A., Chen, Y., Yuan, J., Huang, X., Zhang, X., Hu, P., Song, Y., Qian, C., Sun, Q., Wang, D., Tong, J., Xiang, J.: Epidemiological and clinical features of 2019-nCoV acute respiratory disease cases in Chongqing municipality, China: a retrospective, descriptive, multiple-center study. medRxiv, 2020-030120029397 (2020). doi:10.1101/2020.03.01.20029397
73. Tang, X., Du, R., Wang, R., Cao, T., Guan, L., Yang, C., Zhu, Q., Hu, M., Li, X., Li, Y., Liang, L., Tong, Z., Sun, B., Peng, P., Shi, H.: Comparison of Hospitalized Patients With ARDS Caused by COVID-19 and H1N1. *Chest, 0012369220305584* (2020). doi:10.1016/j.chest.2020.03.032. Accessed 2020-04-27
74. Tian, S., Chang, Z., Wang, Y., Wu, M., Zhang, W., Zhou, G., Zou, X., Tian, H., Xiao, T., Xing, J., Chen, J., Han, J., Ning, K., Wu, T.: Clinical characteristics and reasons of different duration from onset to release from quarantine for patients with COVID-19 Outside Hubei province, China. medRxiv, 2020-032120038778 (2020). doi:10.1101/2020.03.21.20038778
75. Tian, S., Zhu, X., Sun, X., Wang, J., Zhou, Q., Wang, C., Chen, L., Xu, J.: Longitudinal analysis of laboratory findings during the process of recovery for patients with COVID-19. medRxiv, 2020-040420053280 (2020). doi:10.1101/2020.04.04.20053280
76. Wu, J., Liu, J., Zhao, X., Liu, C., Wang, W., Wang, D., Xu, W., Zhang, C., Yu, J., Jiang, B., Cao, H., Li, L.: Clinical Characteristics of Imported Cases of Coronavirus Disease 2019 (COVID-19) in Jiangsu Province: A Multicenter Descriptive Study. *Clinical Infectious Diseases (2020)*. doi:10.1093/cid/ciaa199. Accessed 2020-04-25
77. Wu, C., Chen, X., Cai, Y., Xia, J., Zhou, X., Xu, S., Huang, H., Zhang, L., Zhou, X., Du, C., Zhang, Y., Song, J., Wang, S., Chao, Y., Yang, Z., Xu, J., Zhou, X., Chen, D., Xiong, W., Xu, L., Zhou, F., Jiang, J., Bai, C., Zheng, J., Song, Y.: Risk Factors Associated With Acute Respiratory Distress Syndrome and Death in Patients With Coronavirus Disease 2019 Pneumonia in Wuhan, China. *JAMA Internal Medicine* (2020). doi:10.1001/jamainternmed.2020.0994. Accessed 2020-04-27
78. Wu, F., Wang, A., Liu, M., Wang, Q., Chen, J., Xia, S., Ling, Y., Zhang, Y., Xun, J., Lu, L., Jiang, S., Lu, H., Wen, Y., Huang, J.: Neutralizing antibody responses to SARS-CoV-2 in a COVID-19 recovered patient cohort and their implications. medRxiv, 2020-033020047365 (2020). doi:10.1101/2020.03.30.20047365. Accessed 2020-04-29
79. Xiao, G., Hu, H., Wu, F., Sha, T., Huang, Q., Li, H., Han, J., Song, W., Chen, Z., Zeng, Z.: Acute kidney injury in patients hospitalized with COVID-19 in Wuhan, China: A single-center retrospective observational study. medRxiv, 2020-040620055194 (2020). doi:10.1101/2020.04.06.20055194
80. Xie, H., Zhao, J., Lian, N., Lin, S., Xie, Q., Zhuo, H.: Clinical characteristics of non-ICU hospitalized patients with coronavirus disease 2019 and liver injury: A retrospective study. *Liver International n/a(n/a)* (2020). doi:10.1111/liv.14449. eprint: <https://onlinelibrary.wiley.com/doi/pdf/10.1111/liv.14449>. Accessed 2020-04-25
81. Xu, S., Fu, L., Fei, J., Xiang, H.-X., Xiang, Y., Tan, Z.-X., Li, M.-D., Liu, F.-F., Li, Y., Han, M.-F., Li, X.-Y., Yu, D.-X., Zhao, H., Xu, D.-X.: Acute kidney injury at early stage as a negative prognostic indicator of patients with COVID-19: a hospital-based retrospective analysis. medRxiv, 2020-032420042408 (2020). doi:10.1101/2020.03.24.20042408
82. Yan, D., Liu, X.-y., Zhu, Y.-n., Huang, L., Dan, B.-t., Zhang, G.-j., Gao, Y.-h.: Factors associated with prolonged viral shedding and impact of Lopinavir/Ritonavir treatment in patients with SARS-CoV-2 infection. medRxiv, 2020-032220040832 (2020). doi:10.1101/2020.03.22.20040832
83. Yuan, J., Zou, R., Zeng, L., Kou, S., Lan, J., Li, X., Liang, Y., Ding, X., Tan, G., Tang, S., Liu, L., Liu, Y., Pan, Y., Wang, Z.: The correlation between viral clearance and biochemical outcomes of 94 COVID-19 infected discharged patients. *Inflammation Research* (2020). doi:10.1007/s00011-020-01342-0. Accessed 2020-04-25

84. Zeng, Z., Sha, T., Zhang, Y., Wu, F., Hu, H., Li, H., Han, J., Song, W., Huang, Q., Chen, Z.: Hypertension in patients hospitalized with COVID-19 in Wuhan, China: A single-center retrospective observational study. medRxiv, 2020-040620054825 (2020). doi:10.1101/2020.04.06.20054825
85. Zhang, G., Hu, C., Luo, L., Fang, F., Chen, Y., Li, J., Peng, Z., Pan, H.: Clinical features and outcomes of 221 patients with COVID-19 in Wuhan, China. medRxiv, 2020-030220030452 (2020). doi:10.1101/2020.03.02.20030452
86. Zhao, W., Yu, S., Zha, X., Wang, N., Pang, Q., Li, T., Li, A.: Clinical characteristics and durations of hospitalized patients with COVID-19 in Beijing: a retrospective cohort study. medRxiv, 2020-031320035436 (2020). doi:10.1101/2020.03.13.20035436

Figures

Figure 1 PRISMA diagram showing the results of the screening process used to identify included studies (n = 52).

Figure 2 Hospital length of stay, by discharge status. Medians (square) are presented with interquartile range (IQR). Where estimates were reported as mean and standard deviation, equivalent quantiles have been calculated assuming a Weibull distribution (triangle); if no measure of variation was reported, only the original mean is presented (circle). The grey dashed lines represent the mean value across all point estimates within that setting, weighted by sample size. The studies are ordered by the study start date, with most recent at the top. Two studies (Shi *et al.* (2020-02-02) and Shi *et al.* (2020-01-23)) have multiple estimates for the same outcome which represent multiple treatment and comorbidity subgroups, respectively. Details of these are included in Table 1.

Figure 3 ICU length of stay, by discharge status. Medians (square) are presented with interquartile range (IQR). Where estimates were reported as mean and standard deviation, equivalent quantiles have been calculated assuming a Weibull distribution (triangle); if no measure of variation was reported, only the original mean is presented (circle). The grey dashed lines represent the mean value across all point estimates within that setting, weighted by sample size. Studies are ordered by the study start date.

Figure 4 Combined LOS distributions. Samples from the overall LoS distributions, split by location (China or rest of world) and type (ICU vs General). For each subset, 100000 draws were taken. The x-axis was cut at days = 60.

Tables

Table 1: Summary study characteristics of included studies (n = 52). A total of 46 studies were identified from China, and 6 studies identified outside of China.

Author	Publication Date	Status	Study dates	Country	Province/ region	Study Population	Study design	Sample size	LOS	Sex (% male)	Age	Follow-up completed	Notes
Bhatraju <i>et al.</i> [34]	30/03/2020	Published	24/02/2020 09/03/2020	USA	Seattle, Washington	Patients with laboratory-confirmed Covid-19 infection who were admitted to nine hospital ICUs in the Seattle region	Cohort	24		63	64 ± 18**	No	Not all patients in this study were discharged. Once discharged from ICU several patients were transferred to ward.
Cai <i>et al.</i> [57]	02/04/2020	Published	11/01/2020 06/02/2020	China	Shenzhen, Guangdong	Patients with confirmed COVID-19 admitted Third People's Hospital of Shenzhen	Cohort	298		48.66	47.5 (33-61)*	No	Patients remained hospitalised at the end of the study. It was unclear whether LOS was reported for only dead/discharged patients or also included still-hospitalised patients.
Cao <i>et al.</i> [58]	18/03/2020	Published	18/01/20 03/02/20	China	Wuhan, Hubei	Laboratory-confirmed COVID-19 patients admitted to Jin Yin-Tan Hospital	RCT	199		60.3	58 (49-68)*	No	Patients still hospitalised at the end of the study. Not clear on the number of deaths.
Cao <i>et al.</i> [59]	02/04/2020	Published	03/01/20 15/02/20	China	Wuhan, Hubei	All lab-confirmed patients with COVID-19 admitted to Wuhan University Zhongnan Hospital	Cohort	102		52	54 (37-67)*	Yes	
Chen <i>et al.</i> [60]	11/03/2020	Published	20/01/2020 25/02/2020	China	Shanghai	Recruited patients admitted to Shanghai Public Health Clinical Center (SPHCC), diagnosed with COVID-19 according to Chinese national guideline for COVID-19 diagnosis and treatment, as well as the World Health Organization interim guidance.	Cohort	215		50.6	51 (36 - 64)*	No	Not all patients in this study were discharged.
Chen <i>et al.</i> [61]	26/03/2020	Published	13/01/20 28/02/20	China	Wuhan, Hubei	All COVID-19 confirmed patients admitted to Tongji Hospital	Cohort	274		62.4	62.0 (44.0-70.0)*	No	Patients still hospitalised at the end of the study.
Chen <i>et al.</i> [62]	06/03/2020	Published	23/01/20 20/02/20	China	Hunan	All patients with confirmed COVID-19 admitted to the first Hospital of Changsha and Loudi Central Hospital	Cohort	159		49.8	46 (34-59)*	No	Two estimates of LOS were provided in this study, one estimate for discharged patients only, and one estimate for all patients (including still-hospitalised). The estimate which included still-hospitalised patients was excluded.
Cheng <i>et al.</i> [63]	20/03/2020	Published	28/01/20 17/02/20	China	Wuhan, Hubei	All COVID-19 patients admitted to Tongji hospital	Cohort	113		52.4	63 (50-71)*	No	Patients still hospitalised at the end of the study. LOS was only reported for deaths.
Deng <i>et al.</i> [64]	20/03/2020	Published	01/01/20 21/02/20	China	Wuhan, Hubei	Recovered and dead patients admitted two tertiary hospitals in Wuhan (Hankou and Caidian branch of Tongji Hospital, Tongji Medical College, Huazhong University of Science & Technology, and Hankou branch of Central Hospital of Wuhan)	Cohort	225		55.1	21-94***	Yes	Only enrolled dead and discharged patients within the study, so data is still censored.
Ding <i>et al.</i> [65]	26/03/2020	Published		China	Wuhan, Hubei	Patients infected with both influenza and COVID-19 admitted to Tongji Hospital	Cohort	5		40	39-66***	Yes	
Du <i>et al.</i> [66]	03/04/2020	Published	09/01/20 15/02/20	China	Wuhan, Hubei	Severe patients with confirmed COVID-19 admitted Hantan Hospital and Wuhan Union Hospital	Cohort	85		72.9	65.8 ± 14.2**	Yes	LOS was only reported for deaths.
Fan <i>et al.</i> [67]	05/03/2020	Published	20/01/20 19/02/20	China	Shanghai	All confirmed COVID-19 cases in Shanghai Public Health Clinical Center	Cohort	93		49.3	50.5 (36-64)*	No	Patients still hospitalised at the end of the study.

Graselli <i>et al.</i> [32]	06/04/2020	Published	20/02/20 25/03/20	-	Italy	Lombardy	All patients with laboratory-confirmed COVID-19, referred to Ospedale Maggiore Policlinico, and subsequently admitted to one of the ICUs among 72 hospitals in the network.	Cohort	1591	82	63 (56-70)*	No	Patients still hospitalised at the end of the study.
Guan <i>et al.</i> [36]	28/02/2020	Published	11/12/20 31/01/20	-	China	National	Hospitalized lab confirmed cases of COVID-19 from 552 hospitals in 30 provinces in China.	Cohort	1099	58.1	47.0 (35.0 - 58.0)*	No	1029 /1099 patients were still hospitalised.
ICMARC [28]	16/04/2020	Other	16/04/2020	-	UK	National	Patients critically ill with confirmed COVID-19 reported to ICNARC up to 16 April 2020 from critical care units participating in the Case Mix Programme. This is a national audit that is being continually updated.	Cross-sectional	2936	72.1	60 (52 - 68)*	No	Patients still hospitalised at the end of the study.
ISARIC [27]	08/04/2020	Other	25/03/2020	-	Worldwide (25 countries)		Hospitalised patients with confirmed or suspected COVID-19 submitted electronically by participating sites to the ISARIC database.	Cohort	3316	0.5	71*	No	Patients still hospitalised at the end of the study. Age and sex is only available for all patients. Majority of data is from the UK (82%). LOS estimates were only provided for discharges and deaths.
Liu <i>et al.</i> [68]	13/03/2020	Pre-print	16/01/20 15/02/20	-	China	Wuhan, Hubei	Confirmed cases of COVID-19 medical staff admitted to Union Hospital	Cohort	64	36	35 (29-43)*	No	Patients still hospitalised at the end of the study.
Liu <i>et al.</i> [37]	12/03/2020	Published	22/01/20 11/02/20	-	China	Hangzhou, Zhejiang	Patients with confirmed COVID-19 admitted to Xixi hospital	Cohort	10	40	42 (34–50)*	No	Patients still hospitalised at the end of the study (3 transferred to ICU)
Liu <i>et al.</i> [69]	23/02/2020	Pre-print	20/01/20 03/02/20	-	China	Chongqing	Hospitalized patients with confirmed COVID-19 at Chongqing University Three Gorges Hospital	Cohort	51	62.7	45 (34-51)*	Yes	
Mo <i>et al.</i> [70]	16/03/2020	Published	01/01/20 05/02/20	-	China	Wuhan, Hubei	All patients confirmed COVID-19 patients admitted to Zhongnan Hospital	Cohort	22	MISSING	MISSING	No	LOS is reported for both deaths and discharges, however, sample size was only reported for deaths, so the LOS for discharges was excluded. Age and sex of the population were not provided. Severe cases were excluded from this study.
Pan <i>et al.</i> [71]	13/02/2020	Published	12/01/20 06/02/20	-	China	Wuhan, Hubei	Patients with RT-PCR confirmed COVID-19 infection presenting at Union Hospital, Tongji Medical College. Patients with severe respiratory distress and/or oxygen requirement at any time during the disease course were excluded.	Cohort	21	29	40 ± 9**	Yes	
Perrill <i>et al.</i> [35]	11/04/2020	Pre-print	01/03/2020 07/04/2020	-	USA	New York, New York	All patients with laboratory-confirmed Covid-19 treated at an academic health system in New York City (NYU Langone Health)	Cross-sectional	1273	50.5	52 (36 - 65)*	No	In the critical illness, some patients still hospitalised at the end of the study. In the non-critical all patients discharged (no deaths)
Qi <i>et al.</i> [72]	03/03/2020	Pre-print	19/01/20 16/02/20	-	China	Chongqing	Laboratory-confirmed COVID-19 patients admitted to 3 designated hospitals (Qianjiang central hospital of Chongqing, Chongqing three gorges central hospital and Chongqing public health medical center) in Chongqing provincial municipality	Cohort	164	55.8	48 (35-65)*	No	Patients still hospitalised at the end of the study. Not clear whether they included patients still admitted to hospital or limited to only those that have been dead or discharged within their LOS estimate

Author	Date	Status	Start/End	Country	Location	Description	Cohort	n	Mean LOS	LOS Range	LOS SD	LOS %	LOS IQR	LOS Min	LOS Max	LOS Notes
Qui <i>et al.</i> [29]	25/03/2020	Published	17/01/20 01/03/20	China	Wenzhou, Zhejiang	Paediatric patients (aged 0–16 years) with confirmed COVID-19 from electronic medical records in three hospitals in Zhejiang, China (Ningbo Women and Children's Hospital, The Third Affiliated Hospital of Wenzhou Medical University, and Wenzhou Central Hospital of Wenzhou)	Cohort	36	63.9	8.3 ± 3.5**	Yes					Patients still hospitalised at the end of the study.
Shen <i>et al.</i> [45]	27/03/2020	Published	20/01/20 25/03/20	China	Shenzhen, Guangdong	Laboratory-confirmed COVID-19 and acute respiratory distress syndrome (ARDS) who were admitted to Shenzhen Third People's Hospital who met the following criteria: severe pneumonia with rapid progression and continuously high viral load despite antiviral treatment; PAO2/FiO2 <300; and mechanical ventilation.	Cohort	5	60	36-73***	No					Patients still hospitalised at the end of the study.
Shi <i>et al.</i> [30]	10/03/2020	Published	19/01/20 15/02/20	China	Shanghai	Children admitted to outpatient and emergency department with confirmed COVID-19 to Children's Hospital of Fudan University, Shanghai	Cohort	10	50	6.0 ± 4.2**	No					Only 4 patients had been discharged when LOS was calculated.
Shi <i>et al.</i> [44]	07/04/2020	Pre-print	01/02/20 15/03/20	China	Wuhan, Hubei	Patients with COVID-19 (severe clinical classification) treated at the Union Hospital, Tongji Medical College, Huazhong University of Science and Technology	Cohort	42			Yes					No critical cases
Shi <i>et al.</i> [42]	25/03/2020	Published	20/01/20 15/02/20	China	Wuhan, Hubei	Patients with laboratory-confirmed COVID-19 admitted to Renmin Hospital	Cohort	49	53.7	64 (21-95)*	No					Only report LOS for those who have died: 77% remained in hospital
Shi <i>et al.</i> [43]	24/02/2020	Published	20/12/20 08/02/20	China	Wuhan, Hubei	Patients with confirmed COVID-19 admitted to Wuhan Jinyintan Hospital or Union Hospital of Tongji Medical College	Cohort	29	MISSING	MISSING	No					Patients still hospitalised at the end of the study.
Spieter <i>et al.</i> [33]	05/03/2020	Published	24/01/20 21/02/20	EU/EEA	EU/EEA	European surveillance data of confirmed COVID-19 patients	Cross-sectional	17	MISSING	MISSING	No					Patients still hospitalised at the end of the study.
Tang <i>et al.</i> [73]	26/03/2020	Published	24/12/19 07/02/20	China	Wuhan, Hubei	ARDS admitted to the Department of Pulmonary and Critical Care at Wuhan Pulmonary Hospital in Hubei Province of China	Case control	73	61.6	67 (57-72)*	No					Not clear whether LOS included patients remaining in hospital, or if they were excluded
Tian <i>et al.</i> [74]	23/03/2020	Pre-print	Not stated	China	Liaocheng, Shandong	Not stated	Cohort	37	45.9	44.3 ± 1.67**	No					Not clear what the study population is; location and hospital have been assumed, and study dates have not been provided. Patients still hospitalised at the end of the study.
Tian <i>et al.</i> [75]	07/04/2020	Pre-print	21/01/2020 05/03/2020	China	Jilin	three designated tertiary hospitals in Jilin province including the First Hospital of Jilin University (n=3), Changchun Infectious Disease Hospital (n=42), and Siping Infectious Disease Hospital (n=14)	Cohort	59	57.6	41 (29 - 52)**	Yes					Dates are different in abstract and main text.
Wang <i>et al.</i> [39]	20/03/2020	Published	01/01/20 05/03/20	China	Wuhan, Hubei	All confirmed cases of COVID-19 over 60 years old admitted to Renmin Hospital of Wuhan University in Wuhan, China.	Cohort	339	49	69 (65-76)*	No					LOS was provided for survivors, however not all survivors had been discharged (91/274), and so this estimate includes still-hospitalised patients.

Author	Date	Pre-print	Start Date	Country	Region	Laboratory-confirmed cases of COVID-19, which were reported to the Sichuan Center for Disease Control and Prevention (CDC) through the National Notifiable Diseases Reporting System (NNDRS).	Cross-sectional	538	53	MISSING	No	Not clear whether patients still-hospitalised were included in the LOS estimate, we have assumed that still-hospitalised patients were included.
Wang <i>et al.</i> [38]	10/04/2020	Pre-print	16/01/2020 04/03/2020	China	Sichuan	Laboratory-confirmed cases of COVID-19, which were reported to the Sichuan Center for Disease Control and Prevention (CDC) through the National Notifiable Diseases Reporting System (NNDRS).	Cross-sectional				No	Not clear whether patients still-hospitalised were included in the LOS estimate, we have assumed that still-hospitalised patients were included.
Wu <i>et al.</i> [52]	29/02/2020	Pre-print	25/12/19 11/02/20	China	Wuhan, Hubei	Wuhan Jinyintan Hospital	Cohort	188	63.3	51.9 ± 14.26**	Yes	80 patients but LOS only reported for those discharged.
Wu <i>et al.</i> [76]	29/02/2020	Published	22/01/20 14/02/20	China	Jiangsu	All admitted patients for COVID-19 to First People's Hospital of Yangcheng City, the Second People's Hospital of Yangcheng City, and the Fifth People's Hospital of Wuxi.	Cohort	21	48.8	46.10 ± 15.42**	No	80 patients but LOS only reported for those discharged.
Wu <i>et al.</i> [77]	13/03/2020	Published	25/12/19 13/02/20	China	Wuhan, Hubei	Confirmed COVID-19 pneumonia admitted to Wuhan Jinyintan Hospital	Cohort	144	63.7	51 (43-60)*	No	Unclear whether LOS included those who died. State that some of their cases have previously been described in other studies. Age and sex are regarding total population (including those remaining in hospital)
Wu <i>et al.</i> [78]	09/04/2020	Pre-print	26/02/2020	China	Shanghai	adult COVID-19 patients admitted to Shanghai Public Health Clinical Center.	Cohort	175	47	50* (16 - 85)***	Yes	Only enrolled discharged and mild patients. No start date for the study provided.
Xia <i>et al.</i> [31]	26/02/2020	Published	23/01/20 18/02/20	China	Wuhan, Hubei	Pediatric inpatients with COVID-19 infection confirmed by pharyngeal swab in Wuhan Children's hospital	Cohort	18	65	2*	No	Statistic used for LOS not completely clear. 2 neonates remain under observation but had negative CT findings.
Xiao <i>et al.</i> [79]	08/04/2020	Pre-print	05/01/2020 08/03/2020	China	Wuhan, Hubei	Hankou Hospital, COVID-19 confirmed patients >=18 years, entire stay in hospital >=48 hours, not undergone renal replacement therapy (RRT) before admission	Cohort	287	55.7	62 (51-70)*	No	Not clear whether LOS estimate includes still-hospitalised patients, or only those who are discharges/dead.
Xie <i>et al.</i> [80]	02/04/2020	Published	02/02/20 23/02/20	China	Wuhan, Hubei	All laboratory-confirmed COVID-19 discharged patients from the non-ICU Ward at Wuhan Jinyintan Hospital	Cohort	79	55.7	60 (48-66)*	Yes	Non-ICU LOS reported. Study dates are based on discharge dates, not admission dates.
Xu <i>et al.</i> [81]	26/03/2020	Pre-print	01/01/20 20/02/20	China	Hubei/Anhui	Patients with confirmed COVID-19 admitted to Union Hospital of Huazhong University of Science and Technology; and COVID-19 patients admitted to the Second People's Hospital of Fuyang City, in Anhui province.	Cohort	355	54.4		No	Not clear whether patients remain in hospital at the study end. LOS only mentioned amongst those with AKI who died. Sex/age distribution not specified for this subgroup.
Yan <i>et al.</i> [82]	30/03/2020	Pre-print	31/01/20 09/03/20	China	Hubei	Hospitalized, non-critically ill patients with COVID-19 admitted to NO.3 People's Hospital of Hubei province, that had the available RNA viral data to estimate the duration of viral shedding.	Cohort	120	45	52 (35-63)*	No	Investigating viral shedding so only included patients with RNA viral data. Most patients (99.2%) in the cohort were non-critically ill patients with COVID-19 due to triage strategies. Had 168 patients admitted over the study period, only reported LOS for 120 that had been discharged.
Yang <i>et al.</i> [51]	24/02/2020	Published	24/12/19 09/02/20	China	Wuhan, Hubei	Critically ill adult patients with SARS-CoV-2 pneumonia who were admitted to the intensive care unit (ICU) of Wuhan Jin Yin-tan hospital	Cohort	52	67	59.7 ± 13.3**	Yes	LOS only presented for those that have died.
Yin <i>et al.</i> [40]	11/04/2020	Pre-print	28/01/2020 08/03/2020	China	Wuhan, Hubei	female inpatients (20-40 years old, female) from Jan 28 to Feb 28, 2020, at Wuhan Union and Tongji hospitals of Huazhong University of Science and Technology	Cohort	66	0	20-40	No	Only include pregnant women. Not clear whether patients still-hospitalised were included in the LOS estimate, we have assumed that still-hospitalised patients were included.

Yuan <i>et al.</i> [83]	29/03/2020	Published	11/01/20 13/02/20	-	China	Shenzhen, Guangdong	Confirmed COVID-19 patients which were admitted and subsequently discharged from Shenzhen Third People's Hospital, Hankou Hospital, patients >= 18 years, entire stay in hospital >=48 hours. Confirmed cases of COVID-19	Cohort	94	44.7	40 (1-78)*	Yes	Study dates in abstract and main text differ (abstract: 5th Jan to Feb 13th; main text: 11th Jan to Feb 4th with follow-up to Feb 13th) Excluding short hospital stays (<less 48 hours). Not clear whether LOS estimate includes still-hospitalised patients, or only those who are discharged/dead. Patients still hospitalised at the end of the study.
Zeng <i>et al.</i> [84]	11/04/2020	Pre-print	05/01/2020 08/03/2020	-	China	Wuhan, Hubei	Confirmed COVID-19 patients admitted to Zhongnan Hospital of Wuhan University	Cohort	274	55	60 ± 15 **	No	Doesn't describe patient characteristics and statistic for non-ICU LOS not specified
Zhang <i>et al.</i> [85]	06/03/2020	Pre-print	02/01/20 15/02/20	-	China	Wuhan, Hubei	Confirmed COVID-19 patients admitted to Xi'an No.8 Hospital (Shaanxi Provincial Infectious Disease Hospital) and the First Affiliated Hospital of Xi'an Jiaotong University	Cohort	32	48.9	55 (39 - 66.5)*	No	Patients still hospitalised at the end of the study.
Zhang <i>et al.</i> [41]	26/03/2020	Pre-print			China	Shaanxi	laboratory-confirmed COVID-19 in Beijing YouAn Hospital, Beijing	Cohort	25			No	
Zhao <i>et al.</i> [86]	30/03/2020	Pre-print	21/01/20 29/02/20	-	China	Beijing	All adult (>=18 years) inpatients who were hospitalised for COVID-19 (diagnosed with COVID-19 according to WHO interim guidance) and had a definite outcome (dead or discharged), at Jinyintan Hospital and Wuhan Pulmonary Hospital	Cohort	77	44.2	52 ± 20**	No	Patients still hospitalised at the end of the study.
Zhou <i>et al.</i> [55]	11/03/2020	Published	29/12/19 31/01/20	-	China	Wuhan, Hubei		Cohort	191	62	56 (46 - 67)*	Yes	The study dates are based on discharge dates and not admission dates. Before Jan 11, 2020, SARS-CoV-2 RNA detection results were not available in the electronic medical records, from which data for this study were obtained retrospectively; therefore, this study includes 29 of the 41 patients originally reported on.

* median (IQR); **mean ± SD; ***range

Supplementary materials

List of search terms

Supplementary Table A

Description of information extracted from included studies

Supplementary Table B

Database of all studies included within the review. Available as an excel spreadsheet: [SupplementaryTableB.xlsx](#)

Supplementary figures

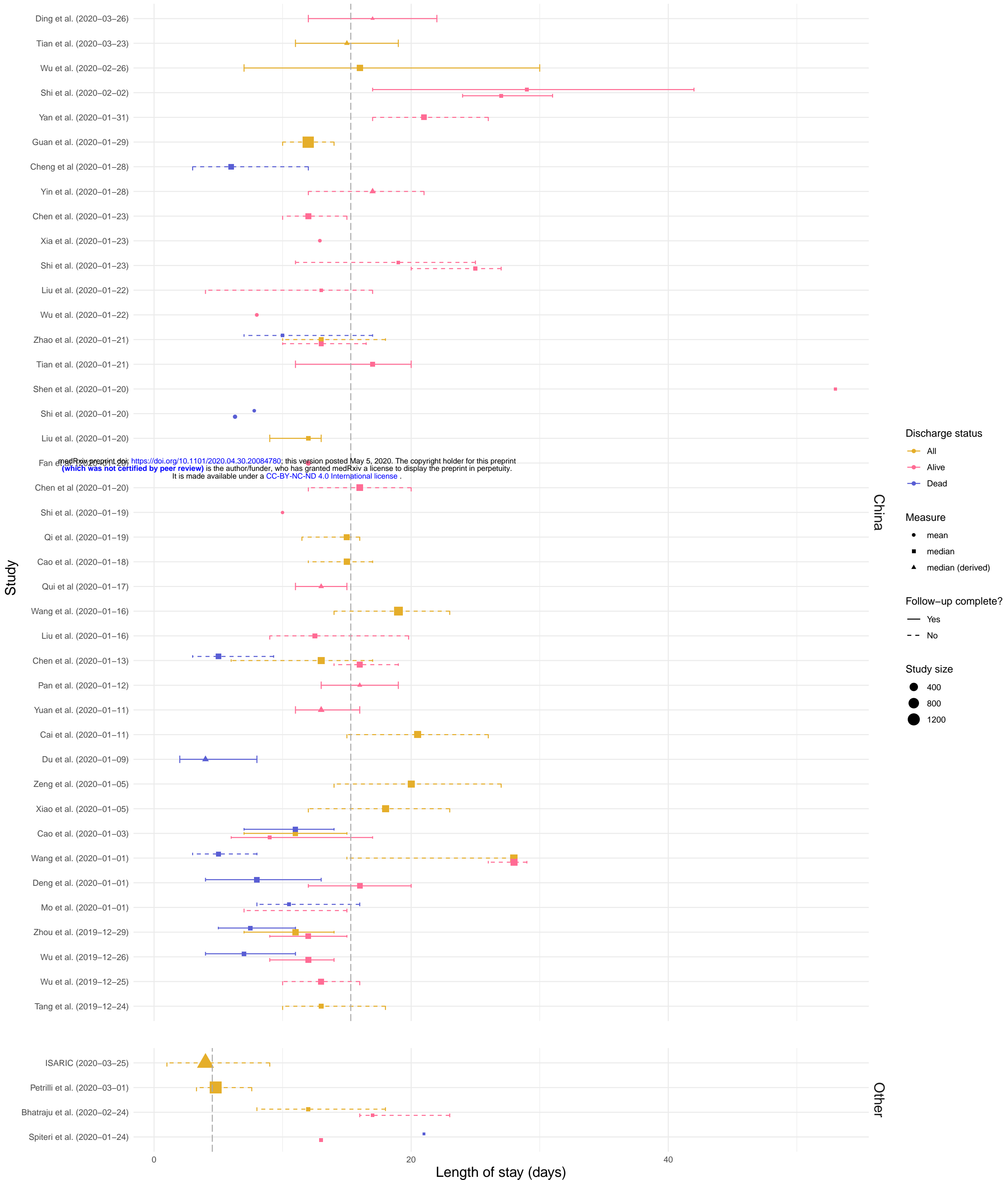
A: LoS by disease severity

B: LoS by study median age

C: Summary distributions for China/other and general/ICU

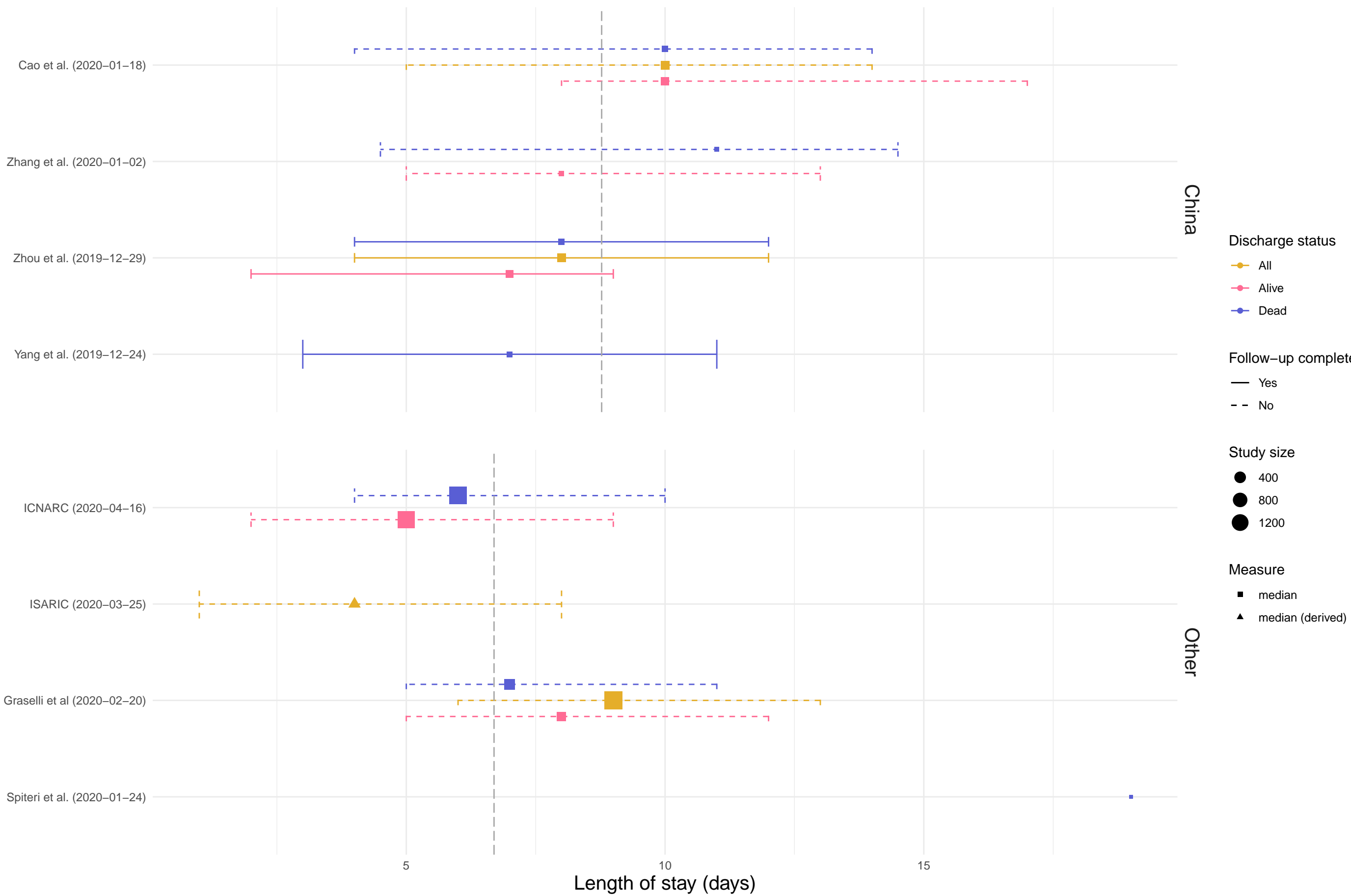
D: Sensitivity analysis of summary distributions to weighting

Length of stay in hospital, by discharge status



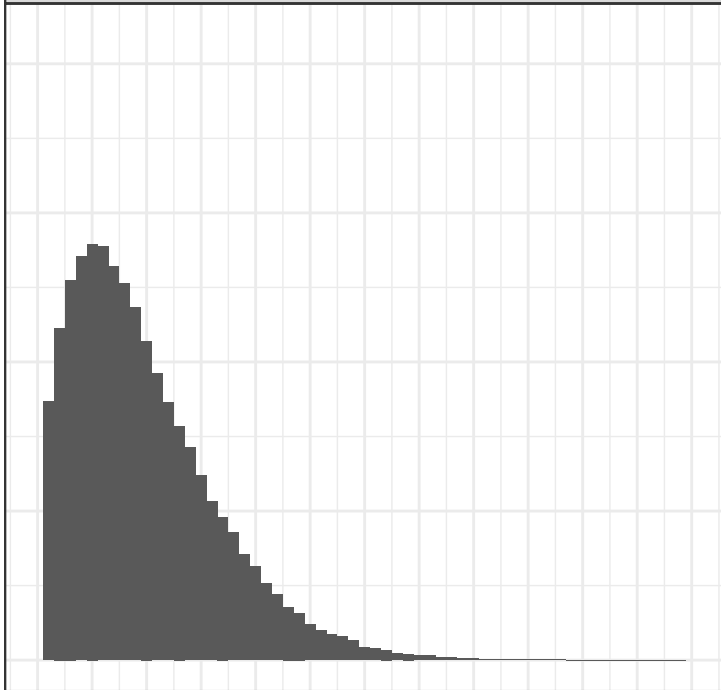
medRxiv preprint doi: <https://doi.org/10.1101/2020.04.30.20084780>; this version posted May 5, 2020. The copyright holder for this preprint (which was not certified by peer review) is the author/funder, who has granted medRxiv a license to display the preprint in perpetuity. It is made available under a [CC-BY-NC-ND 4.0 International license](https://creativecommons.org/licenses/by-nc-nd/4.0/).

Length of stay in ICU, by discharge status

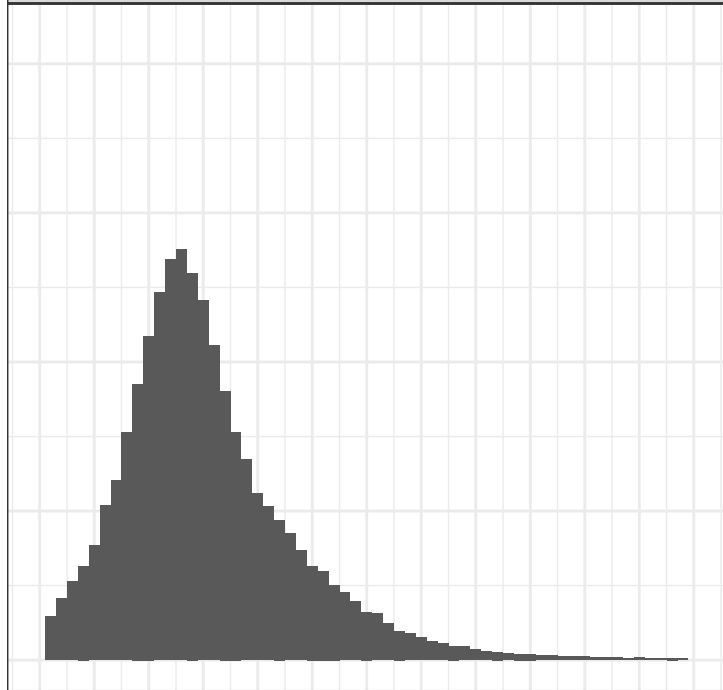


Studies ordered by study_date. Weighted means at 6.7, 8.8 days.

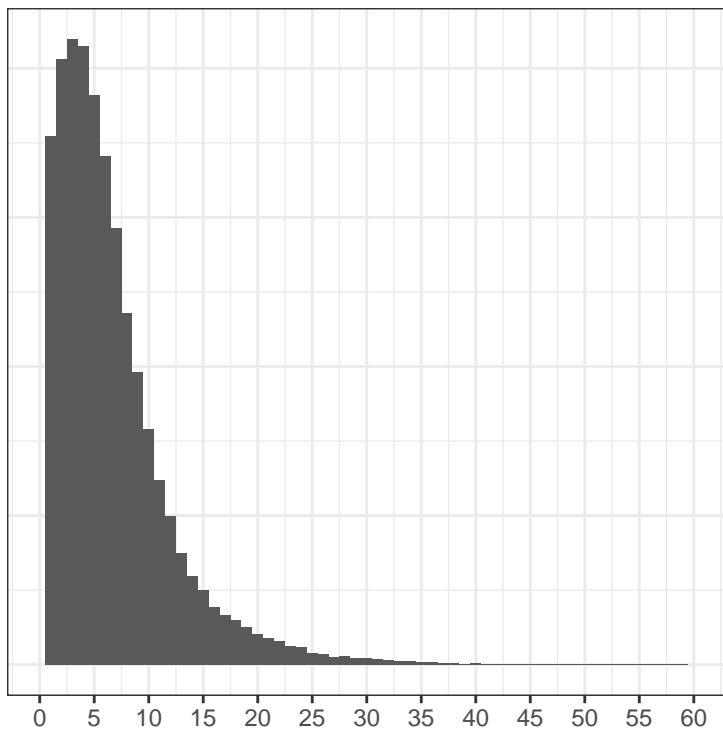
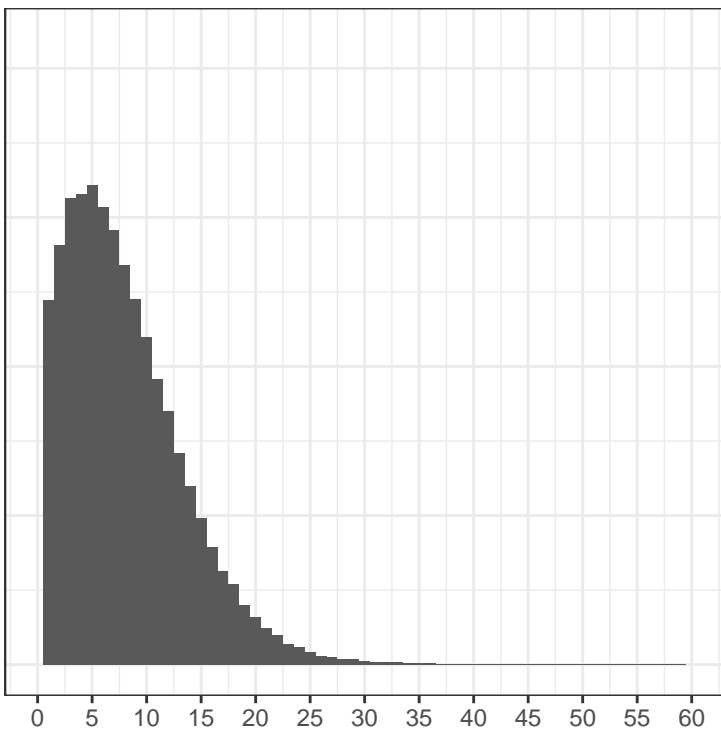
ICU



General



China

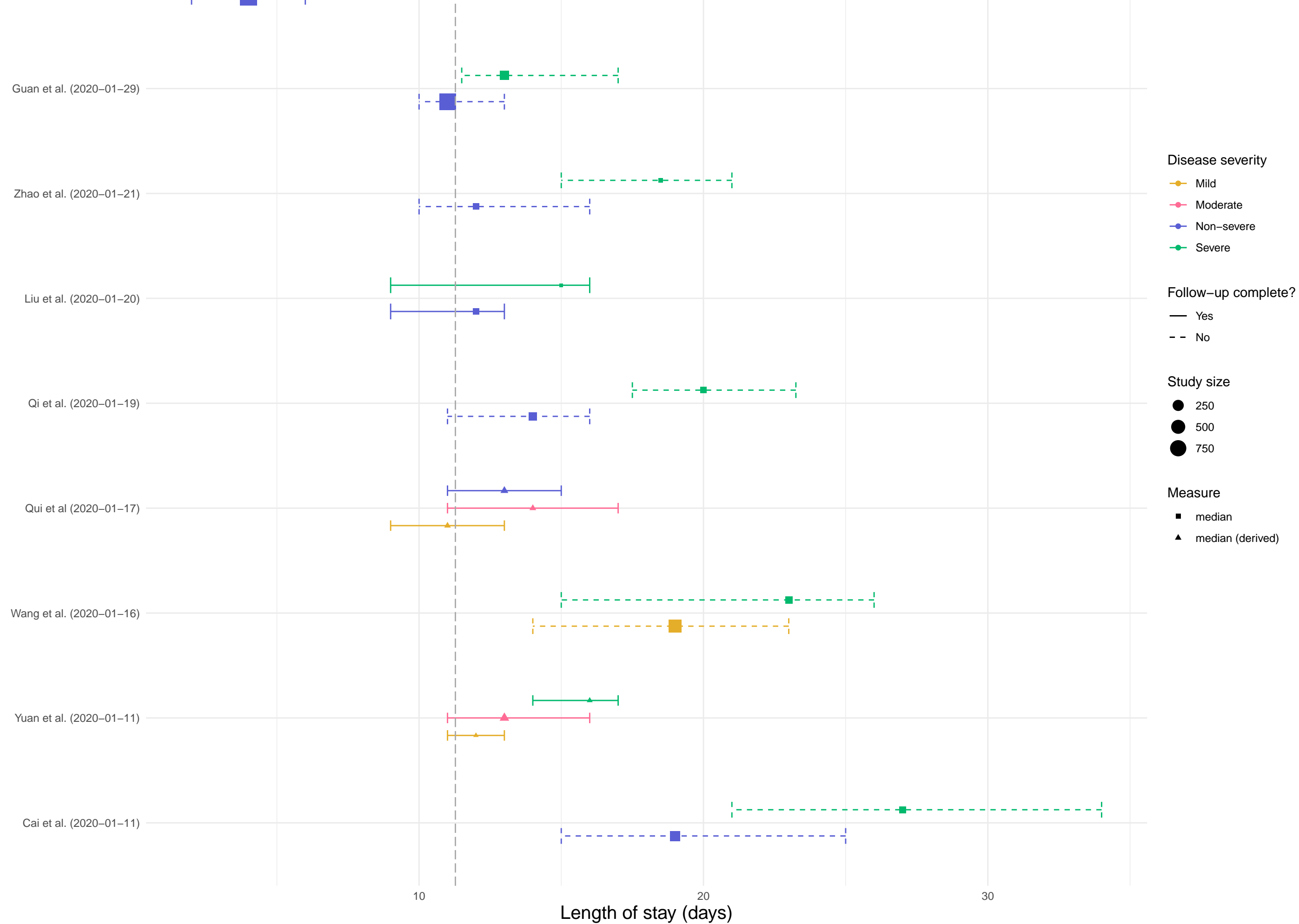


Rest of World

Length of Stay (days)

Length of stay in hospital, by study-specified disease severity

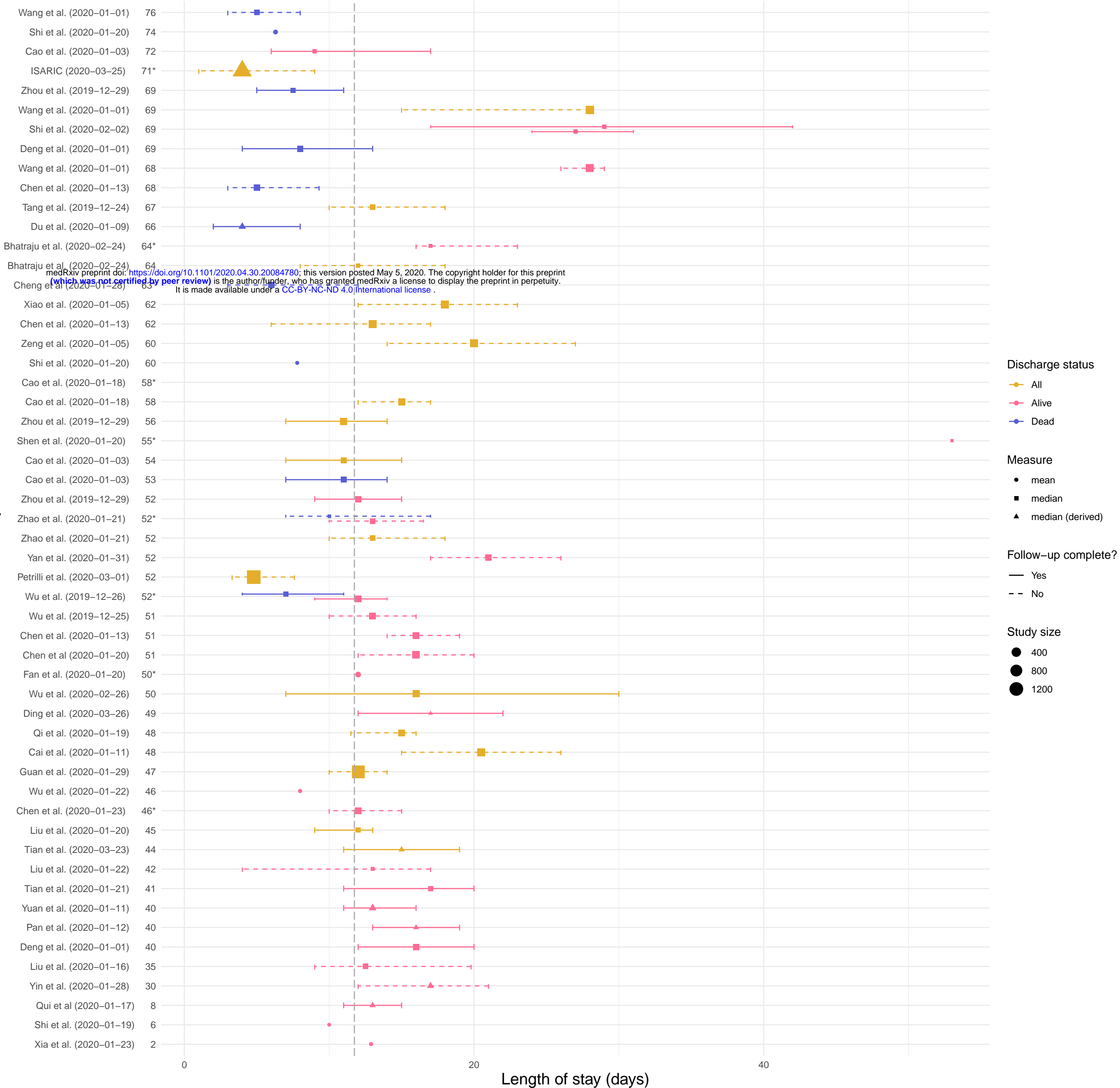
medRxiv preprint doi: <https://doi.org/10.1101/2020.04.30.20084780>; this version posted May 5, 2020. The copyright holder for this preprint (which was not certified by peer review) is the author/funder, who has granted medRxiv a license to display the preprint in perpetuity. It is made available under a [CC-BY-NC-ND 4.0 International license](https://creativecommons.org/licenses/by-nc-nd/4.0/).



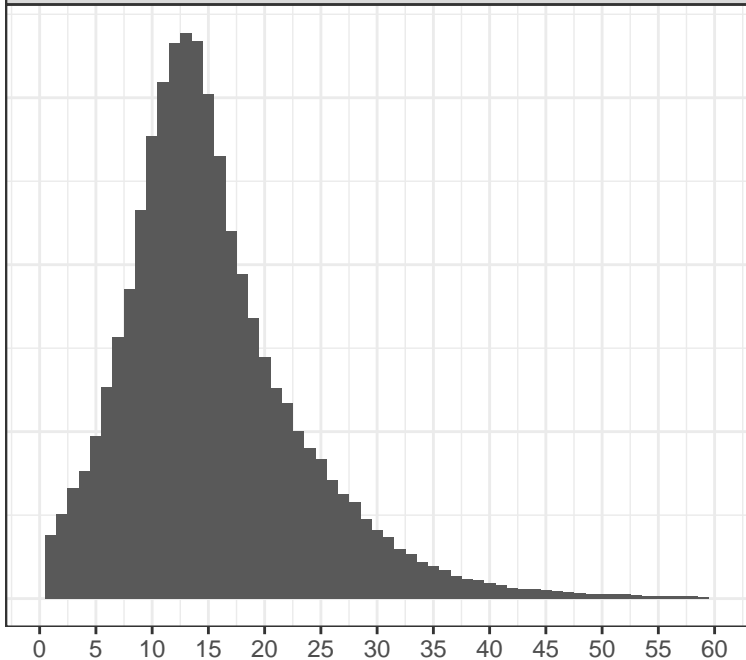
Studies ordered by study_date. Weighted mean at 11.3 days.

Length of stay in hospital, by discharge status

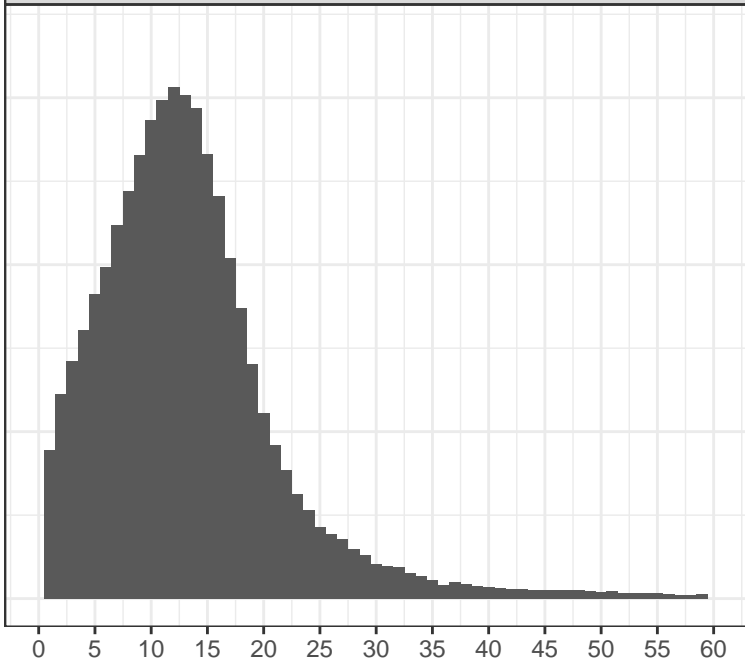
Studies ordered by average participant age (given on the vertical axis)



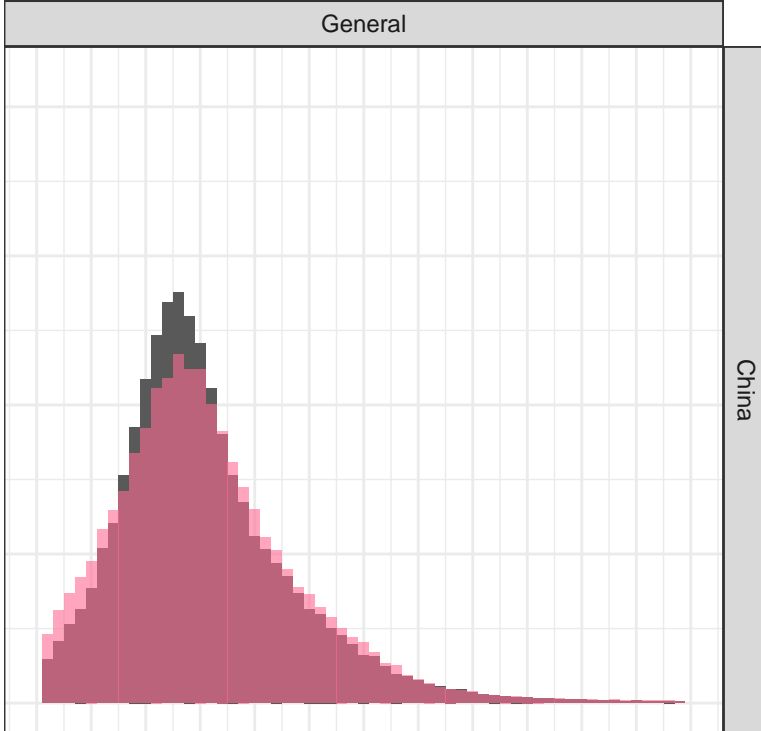
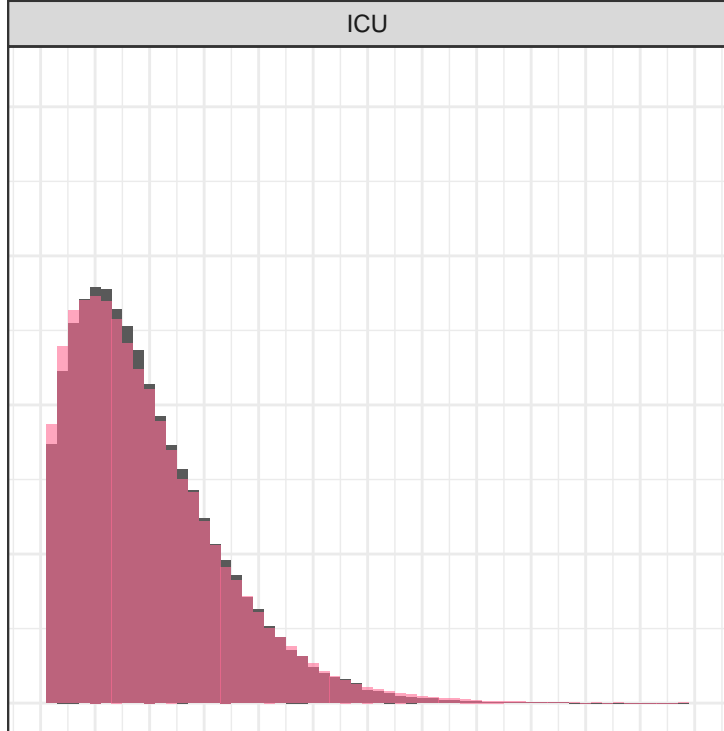
Ongoing



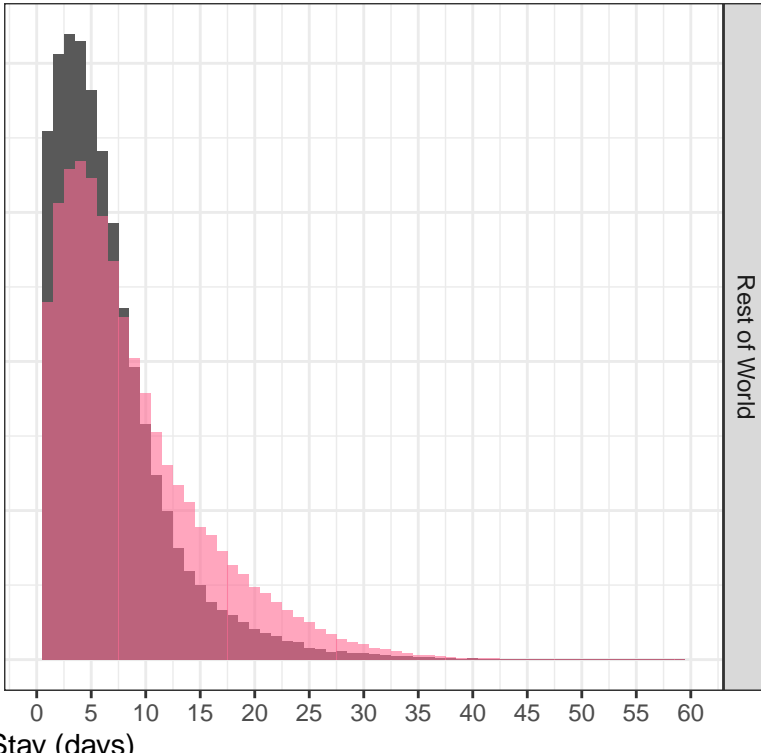
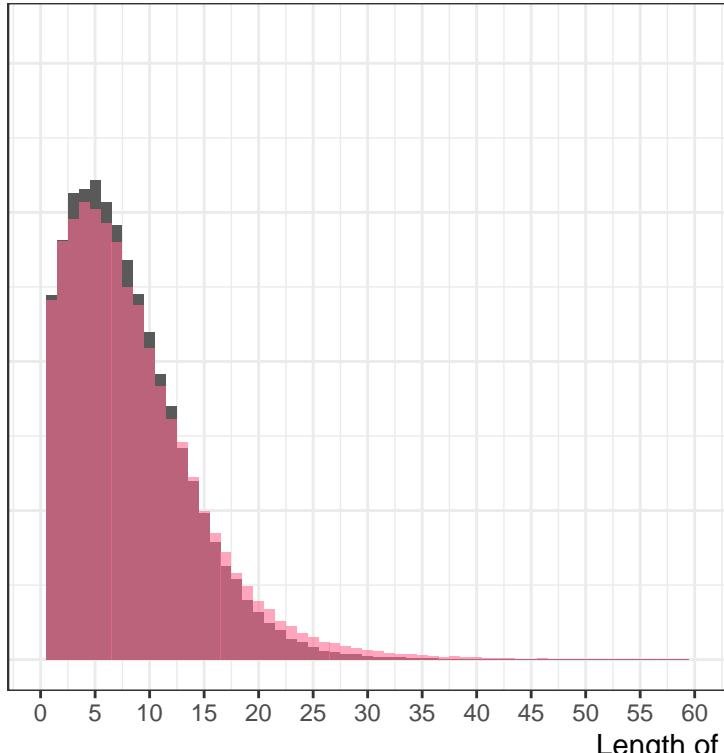
Complete



Length of Stay (days)



China



Rest of World

Length of Stay (days)

