

A cohort of patients with COVID-19 in a major teaching hospital in Europe

Alberto M. Borobia*, M.D.¹, Antonio J. Carcas*, M.D.,¹ Francisco Arnalich, M.D.², Rodolfo Álvarez-Sala, M.D.³, Jaime Montserrat, M.D.¹, Manuel Quintana, M.D.⁴, Juan Carlos Figueira, M.D.⁴, Rosario M. Torres Santos-Olmo, M.D.⁵, Julio García-Rodríguez, M.D.⁶, Alberto Martín-Vega, M.D.⁷, Antonio Buño, M.D.⁸, Elena Ramírez, M.D.¹, Gonzalo Martínez-Alés, M.D.⁹, Nicolás García-Arenzana Les, M.D.¹⁰, Milagros Martí-de-Gracia, M.D.¹¹, Francisco Moreno Ramos, M.D.¹², Francisco Reinoso-Barbero, M.D.¹³, Alejandro Martín-Quiros, M.D.⁵, Angélica Rivera Núñez, M.D.⁵, Dr. Jesús Mingorance, M.D.⁶, Carlos J Carpio Segura, M.D.³, Daniel Prieto Arribas, M.D.⁸, Esther Rey Cuevas, R.N.¹⁴, Concepción Prados Sánchez, M.D.¹⁵, Juan J. Rios, M.D.¹⁶, Miguel A. Hernán, M.D.¹⁷, Jesús Frías, M.D.¹ and José R Arribas*, M.D.² for the COVID@HULP Working Group**

1. Clinical Pharmacology Department, La Paz University Hospital-IdiPAZ. Universidad Autónoma de Madrid.
2. Internal Medicine Department, La Paz University Hospital-IdiPAZ, Universidad Autónoma de Madrid.
3. Pneumology Department. La Paz University Hospital-IdiPAZ. Universidad Autónoma de Madrid.
4. Intensive Care Unit. La Paz University Hospital-IdiPAZ. Universidad Autónoma de Madrid.
5. Emergency Department. La Paz University Hospital-IdiPAZ. Universidad Autónoma de Madrid.
6. Microbiology Department. La Paz University Hospital-IdiPAZ.
7. CSUR Coordination. La Paz University Hospital-IdiPAZ.
8. Laboratory Medicine Department. La Paz University Hospital-IdiPAZ.
9. Department of Epidemiology. Columbia Mailman School of Public Health. Emergency Department. La Paz University Hospital.
10. Preventive Medicine Department. La Paz University Hospital-IdiPAZ.
11. Emergency Radiology Unit. La Paz University Hospital-IdiPAZ.
12. Pharmacy Department. La Paz University Hospital-IdiPAZ.
13. Anesthesia Department. La Paz University Hospital-IdiPAZ.
14. Nursing Department Director. La Paz University Hospital-IdiPAZ.
15. Deputy Medical Director. La Paz University Hospital-IdiPAZ.
16. Medical Director. La Paz University Hospital-IdiPAZ.
17. Departments of Epidemiology and Biostatistics. Harvard T.H. Chan School of Public Health, Boston, Massachusetts. Harvard-MIT Division of Health Sciences and Technology, Boston, Massachusetts.

NOTE: This preprint reports new research that has not been certified by peer review and should not be used to guide clinical practice.

***Corresponding authors**

Alberto M. Borobia. Clinical Pharmacology Department

Antonio J. Carcas. Clinical Pharmacology Department

José R. Arribas. Internal Medicine Department.

La Paz University Hospital

Paseo de la Castellana, 261

28046-Madrid (SPAIN)

Tlf: +34-917277000

alberto.borobia@salud.madrid.org

antonio.carcas@uam.es

joser.arribas@salud.madrid.org

** A complete list of the members of the COVID@HULP Working Group is provided in the Supplementary Appendix

ABSTRACT

BACKGROUND

Since the confirmation of the first patient infected with SARS-CoV-2 in Spain in January 2020, the epidemic has grown rapidly, with the greatest impact on the Madrid region. This article describes the first 2226 consecutive adult patients with COVID-19 admitted to the La Paz University Hospital in Madrid.

METHODS

Our cohort included all consecutively admitted patients who were hospitalized and who had a final outcome (death or discharge) in a 1286-bed hospital of Madrid (Spain) from February 25th (first case admitted) to April 19th, 2020. Data was entered manually into an electronic case report form, which was monitored prior to the analysis.

RESULTS

We consecutively included 2226 adult patients admitted to the hospital who either died (460) or were discharged (1766). The patients' median age was 61 years; 51.8% were women. The most common comorbidity was arterial hypertension (41.3%). The most common symptom on admission were fever (71.2%). The median time from disease onset to hospital admission was 6 days. Overall mortality was 20.7% and was higher in men (26.6% vs 15.1%). Seventy-five patients with a final outcome were transferred to the ICU (3.4%). Most patients admitted to the ICU were men, and the median age was 64 years. Baseline laboratory values on admission were consistent with an impaired immune-inflammatory profile.

CONCLUSIONS

We provide a description of the first large cohort of hospitalized patients with COVID-19 in Europe. Advanced age, male gender, the presence of comorbidities and abnormal laboratory values were more common among the patients with fatal outcomes.

INTRODUCTION

After the United States, Spain has the second highest number of confirmed infections with severe acute respiratory syndrome coronavirus 2 (SARS-CoV-2) worldwide. The first patient in Spain was confirmed on January 31st, 2020¹ and in the Madrid region on February 25th, 2020, an area 6.7 million individuals² where the epidemic had the greatest impact. The number of confirmed cases in Madrid was 58,819 as of April 25 (26.3% of cases in Spain)³, with a maximum of 3419 new cases on March 30.

The progression of the outbreak in Madrid is quite similar to that observed in the most affected areas in western countries such as the Lombardia region in Italy, or New York city in US. The healthcare systems of these areas are under very high stress and the mortality rates (per 100,000 inhabitants) are high: 132 in Lombardia, 140 in New York City and 190 in Madrid (as of 25th of April).⁴⁻⁶

La Paz University Hospital is a major teaching hospital that serves a catchment area of 527,366 individuals in the north of Madrid. Shortly after the outbreak, hospital's operations were adapted to cope with the surge in COVID-19 cases. By April 25, the hospital had admitted over 2500 patients with COVID-19, one of the largest single-site cohorts in Europe. The clinical information of these patients was collected using a standardized protocol.

Here, we describe the first consecutive 2226 adult patients with a confirmed SARS-CoV-2 infection in La Paz University Hospital and who had been discharged or died by April 19.

METHODS

Study population

Our study includes all individuals 18 years or older who were hospitalized in the wards (or emergency department, due to lack of available beds in the wards) of La Paz University Hospital with a COVID-19 diagnosis and who had been discharged or dead by April 19th. Patients discharged from the emergency department after less than a 24-hour stay were not considered hospitalized and were not included in this analysis.

Data collection

A modified version of the electronic case record form (eCRF) for severe acute respiratory infections by the World Health Organization/International Severe Acute Respiratory and Emerging Infection Consortium was used⁷. Our eCRF includes 372 variables grouped into demography, medical history, infection-exposure history, symptoms, complications, treatments (excluding clinical trials) and evolution of the disease during hospitalization (Supplementary material).

Clinical data were collected by direct extraction when this was possible, or by manual and individual review of the patients' electronic clinical records, including clinical notes (DXC-HCIS- Healthcare Information System). Clinical data at hospital admission included age, sex, smoking status, transmission, comorbidities, symptoms on admission, respiratory status and time from disease onset. Complications during hospitalization and admission to ICU were also recorded. This data collection effort has been carried out by a volunteer team of resident doctors and senior medical students. Data monitoring was conducted by the Central Clinical Research Unit of our hospital.

Laboratory results (hematology, biochemistry, microbiology) were extracted from different hospital data management systems. Medications during hospitalization were extracted from the electronic prescription system (EPSs).

Statistical analysis

Continuous variables are presented as mean and standard deviation (SD) or median and interquartile range (IQR). Categorical variables are listed as numbers and percentages (%), respectively. We performed the statistical calculations using R (version 3.4.0)⁸.

The study was approved by the Research Ethics Committee of La Paz University Hospital (PI-4072) and by the Spanish Agency of Medicines and Medical Devices (HUL-AIN-2020-01) and was registered in the European Union Electronic Register of Post-Authorization Studies (EUPAS34331).

RESULTS

A total of 3127 patients were consecutively treated in the emergency department of La Paz University Hospital between Feb 25th and April 19th, 2020. Of these, 2226 adult patients were hospitalized and either died (460, 20.7%) or were discharged (1766, 79.3%) and therefore included in our analysis. Figure 1 shows occupancy with by COVID-19 patients over time, with a peak of 1033 beds (compared with 1268 pre-COVID beds for the entire hospital) of which 106 were in ICU (compared with 30 pre-COVID ICU beds).

The median time from clinical onset to hospital admission was 6 days (IQR, 3–9). At admission, patients had a median age of 61 (IQR, 46–78) years, 52% were women, 41% had hypertension, 19% had chronic heart disease, and 17% had diabetes mellitus. The most common symptoms on admission were fever, cough and dyspnea. The median oxygen

saturation on admission was 95% (IQR, 92–97). The most common complications during the hospitalization were acute confusional syndrome, acute kidney failure and acute respiratory distress syndrome (Table 1).

The majority of patients received a treatment with presumed antiviral activity against SARS-CoV-2. The most frequent combination was Hydroxychloroquine + Azithromycin followed by Hydroxychloroquine alone

In the moment of the analysis, 237 patients had been admitted in the ICU, 116 remain in the ICU, 55 have died, 20 were discharged from the hospital and 46 remain in an acute hospital bed. Table 2 shows the demographic characteristics, comorbidities and respiratory status on the day of admission to the emergency department of the 75 patients (3.4%) transferred to the intensive care unit (ICU) who had been discharged or died by April 19th. Compared with the entire cohort, patients admitted to the ICU were older (median 64 vs 61 years), had a higher male/female ratio (3.2 vs 0.93) and higher prevalence of hypertension (52 vs 41.3%), obesity (30.7% vs 10.9%), diabetes mellitus (28.0% vs 17.1%) and chronic obstructive pulmonary disease (17.3 vs 6.9).

Table 3 shows the mortality by age group and sex in the 2226 patients. Overall mortality was 26.6% in males and 15.1% in females. Mortality increased with age, reaching over 60% for patients over 80 years of age.

Table 4 shows the laboratory findings at admission for the entire cohort and for the ICU subgroup. In the cohort, baseline creatine kinase, creatinine, D-dimer, ferritin, lactate dehydrogenase, procalcitonin, C-reactive protein and high-sensitivity cardiac troponin I levels and prothrombin times were higher among the non-survivors than the survivors. In the cohort admitted to the ICU, the most notable differences with the whole cohort were

higher levels of D-dimer, ferritin, C reactive protein and troponin. Also, lymphocyte count, procalcitonin and C-reactive protein levels at hospital admission were clearly higher in the patients who died in comparison with those surviving within the ICU cohort.

DISCUSSION

To the best of our knowledge, this is the first report of a large cohort of patients hospitalized with COVID-19 in Europe. Our cohort includes all consecutive patients with a final outcome (discharge or death) admitted to our hospital during the heaviest COVID-19 case load on Madrid's hospital system.

Similar to other cohorts⁹⁻¹⁵, hospitalized patients in Madrid were elderly and had numerous comorbidities, the most common of which were arterial hypertension and diabetes. Our male/female ratio was 0.9, which is lower than the 1.5 reported in the series from Wuhan (China)¹² and New York City¹⁰. In Madrid, the male/female ratio for individuals older than 60 and 75 years was 0.74 and 0.61, respectively¹⁶. Differences compared with other cohorts could be partially explained by the different male/female ratio in the Madrid population pyramid. Despite our lower male/female ratio compared with other reports, the mortality for each age group was notably higher for the male patients than for the female patients, as reported in other cohorts. It is relevant that one third of the patients included in our cohort were nursing homes residents.

The overall mortality (20.7%) in our series by age group was similar to that of the New York cohort (21%)¹⁰ and lower than that of a Wuhan cohort (28.3%)¹². In our cohort, older age and the presence of comorbidities were more common for the patients with fatal outcomes, both for the entire cohort and for those admitted to the ICU.

The most frequent symptoms at admission were fever, cough and dyspnea; myalgias and diarrhea were also common. Notably, 12.8% of the patients had anosmia as a presenting symptom, as described in other cohorts¹⁷. The time from disease onset was short (6 days), and the patients' respiratory status on admission (as reflected by SatO₂) was generally poor, with half of the patients presenting an SatO₂ <95%.

The laboratory values on admission were consistent with an impaired immune-inflammatory profile characterized by lymphopenia and elevated D-dimer, procalcitonin, ferritin and C-reactive protein. Most of these abnormal laboratory readings were more common in the patients with fatal outcomes. Creatine kinase and troponin levels on admission were also higher in patients with a fatal outcome a finding also reported in other series¹⁸.

The majority of our patients received treatment with presumed activity against SARS-CoV-2. At present there are no clinical trial data supporting that any of these treatments improve outcomes of COVID-19

This study has a number of limitations. First, the data were collected from various databases, both manually and automatically. The data included manually in the eCRF was monitored and curated. Second, we did not conduct a follow-up of the patients after discharge. Third our reported mortality rates might change when our full cohort of hospitalized patients is analyzed

In summary, this study provides initial data on the clinical and laboratory features and outcomes of patients hospitalized with COVID-19 infection in a large teaching hospital in Madrid during the peak of the epidemic

TABLES

Table 1: Characteristics on Admission, and Complications during Hospitalization

Variable	Total (n=2226)	Deaths (n=460)	Live discharges (n=1766)
Median age, years (IQR)	61 (46–78)	82.5 (76–87)	56 (42–71)
Sex, n (%)			
Male	1074 (48.2)	286 (62.2)	788 (44.6)
Female	1152 (51.8)	174 (37.8)	978 (55.4)
Nursing home resident	709 (31.9)	125 (27.2)	584 (33.1)
Current smokers, n (%)	157 (7.1)	44 (9.6)	113 (6.4)
Comorbidities (at least one), n (%)	1747 (78.5)	448 (97.4)	1299 (73.6)
Arterial hypertension	920 (41.3)	318 (69.1)	602 (34.1)
Chronic heart disease	429 (19.3)	195 (42.4)	234 (13.3)
Diabetes mellitus	381 (17.1)	157 (34.1)	224 (12.7)
Rheumatological disease	268 (12.0)	80 (17.4)	188 (10.6)
Solid malignant disease	252 (11.3)	93 (20.2)	159 (9.0)
Obesity	242 (10.9)	66 (14.3)	176 (10.0)
Chronic kidney disease	174 (7.8)	94 (20.4)	80 (4.5)
Chronic obstructive pulmonary disease	153 (6.9)	65 (14.1)	88 (5.0)
Other chronic lung diseases	143 (6.4)	49 (10.7)	94 (5.3)
Hematological malignant disease	133 (6.0)	46 (10.0)	87 (4.9)

Asthma	115 (5.2)	17 (3.7)	98 (5.5)
Liver disease	89 (4.0)	23 (5.0)	66 (3.7)
HIV infection	13 (0.6)	4 (0.9)	9 (0.5)
Symptoms on admission, n (%)			
Fever	1585 (71.2)	325 (70.7)	1260 (71.3)
Cough	1373 (61.7)	228 (49.6)	1145 (64.8)
Dyspnea	1108 (49.8)	278 (60.4)	830 (47.0)
Myalgia	596 (26.8)	51 (11.1)	545 (30.9)
Diarrhea	484 (21.7)	62 (13.5)	422 (23.9)
Headache	427 (19.2)	24 (5.2)	403 (22.8)
Sputum production	320 (14.4)	80 (17.4)	240 (13.6)
Nausea or vomiting	299 (13.4)	42 (9.1)	257 (14.6)
Anosmia	284 (12.8)	5 (1.1)	279 (15.8)
Respiratory status			
Median SatO ₂ on admission. % (IQR)	95 (92–97)	90 (85–93.3)	96 (93–97)
SatO ₂ <90% on admission, n (%)	234 (10.5)	126 (27.4)	108 (6.1)
Median time from disease onset to hospital admission, days (IQR)	6 (3–9)	4 (2–7)	7 (3–10)
Complications during hospitalization			
Acute confusional syndrome	197 (8.8)	149 (32.4)	48 (2.7)
Acute kidney failure	173 (7.8)	120 (26.1)	53 (3.0)
Acute respiratory distress syndrome	109 (4.9)	94 (20.4)	15 (0.8)

Bacterial pneumonia	64 (2.9)	45 (9.8)	19 (1.1)
Acute heart failure	51 (2.3)	34 (7.4)	17 (1.0)
Arrhythmia	46 (2.1)	33 (7.2)	12 (0.7)
Treatment regimens, n (%)			
Hydroxychloroquine + Azythromycine	706 (31.7)	180 (39.1)	526 (29.8)
Hydroxychloroquine	545 (24.5)	163 (35.4)	382 (21.6)
Hydroxychloroquine + Lopinavir/ritonavir	116 (5.2)	23 (5.0)	93 (5.3)
Hydroxychloroquine + Azythromycine + Lopinavir/ritonavir	69 (3.1)	23 (5.0)	46 (2.6)
Lopinavir/ritonavir	19 (0.8)	3 (0.6)	16 (0.9)

Abbreviations: HIV, human immunodeficiency virus; IQR, interquartile range; SatO₂, oxygen saturation

Table 2: Demographic, Comorbidities and Respiratory Status on Admission of the ICU Patients

Variable	Total (n=75)	Deaths (n=55)	Live discharges (n=20)
Median age, years (IQR)	64 (54–71)	69 (62–72.5)	47 (38.5–56)
Sex, n (%)			
Male	57 (76)	39 (70.9)	18 (90)
Female	18 (24)	16 (29.1)	2 (10)
Current smokers, n (%)	10 (13.3)	7 (12.7)	3 (15)
Comorbidities (at least one), n (%)	67 (89.3)	52 (94.6)	15 (75)
Arterial hypertension	39 (52.0)	32 (58.2)	7 (35)
Obesity	23 (30.7)	18 (32.7)	5 (25)
Diabetes mellitus	21 (28.0)	17 (30.9)	4 (20)
Chronic obstructive pulmonary disease	13 (17.3)	12 (21.8)	1 (5)
Chronic heart disease	11 (14.7)	10 (18.2)	1 (5)
Solid malignant disease	9 (12.0)	6 (10.9)	3 (15)
Rheumatological disease	7 (9.3)	5 (9.1)	2 (10)
Chronic kidney disease	5 (6.7)	5 (9.1)	0 (0)
Asthma	4 (5.3)	3 (5.5)	1 (5)
Other chronic lung diseases	4 (5.3)	4 (7.3)	0 (0)
Liver disease	3 (4.0)	2 (3.6)	1 (5)
Hematological malignant disease	3 (4.0)	3 (5.5)	0 (0.0)

HIV infection	1 (1.3)	1 (1.8)	0 (0)
Respiratory status, n (%)			
SatO ₂ <90% on admission	11 (17)	9 (16.3)	2 (10)

Abbreviations: HIV, human immunodeficiency virus; IQR, interquartile range; SatO₂, oxygen saturation.

Table 3: Mortality Distribution by Age Group and gender

Age group	Male		Female		Total	
	n	Mortality (%)	n	Mortality (%)	n	Mortality (%)
18-29 years	59	0.0	100	1.0	159	0.6
30-39 years	86	0.0	133	0.0	219	0
40-49 years	120	1.7	167	1.2	287	1.5
50-59 years	166	4.8	199	3.0	365	3.8
60-69 year	120	20.0	152	7.9	327	11
70-79 years	202	41.1	156	25.0	358	34.1
80-89 years	212	62.7	179	41.3	391	52.9
≥90 years	54	66.7	66	60.6	120	63.3

Table 4: Laboratory Findings on Admission

Variable, median (IQR)	n with data	Total	Deaths	Live discharges
Entire cohort		n=2226	n=460	n=1766
Lymphocyte count, $\times 10^9/L$ (NR, 1.1–4.5)	1805	0.93 (0.91–0.97)	0.68 (0.64–0.74)	1.02 (0.99–1.06)
ALT, U/L (NR, 0–35)	1526	31 (30–33)	28 (27–31)	32 (31–34)
Albumin g/dL (NR, 2.9–5.2)	1200	4.2 (4.2–4.3)	3.9 (3.9–4)	4.3 (4.3–4.4)
Creatine kinase, U/L (NR, 40–280)	1241	100 (95–105)	143 (121–164)	88 (83–95)
Creatinine mg/dL (NR, 0.7–1.3)	1602	0.81 (0.8–0.83)	1.05 (0.99–1.13)	0.77 (0.75–0.78)
D-dimer, ng/mL (NR, 0–500)	982	720 (680–758)	1590 (1309–1952)	608 (560–648)
Serum ferritin, ng/L (NR, 22–322)	599	346 (312–393)	588 (490–741)	313 (261–358)
Platelet count, $\times 10^9/L$ (NR; 150–370)	1605	218 (213–225)	198 (186–206)	226 (219–234)
IL-6, pg/mL (NR, 0–3,4)	90	28.4 (18.8–40.1)	30.9 (27.2–244)	26 (17.9–43.9)

Lactate dehydrogenase, U/L (NR, 100–190)	1458	321 (315–330)	380 (364–408)	308 (301–316)
Procalcitonin, ng/mL (NR, 0–0.5)	637	0.12 (0.1–0.14)	0.4 (0.3–0.5)	0.09 (0.08–0.11)
C-reactive protein, mg/L (NR, 0–5)	1482	71.1 (65.6–77.4)	137.7 (118.1,153.8)	57.8 (51.8–62)
Prothrombin time, s	1581	11.1 (11.1–11.2)	11.5 (11.4–11.7)	10.9 (10.9–11)
High-sensitivity cardiac troponin I, ng/L (NR, 0–53.5)	253	11.2 (9.1–18.2)	66.9 (29.7–115.2)	8.2 (6.4–11)
ICU cohort		n=75	n=55	n=20
Lymphocyte count, ×10 ⁹ /L (NR 1.1–4.5)	72	0.85 (0.77–0.97)	0.77 (0.66–0.85)	0.98 (0.87–1.15)
ALT, U/L (NR, 0–35)	53	38 (32–51)	35 (31–52)	47 (29–73)
Albumin g/dL (NR, 2.9–5.2)	28	4.1 (4.0–4.3)	4.1 (4–4.4)	4.3 (4–4.4)
Creatine kinase, U/L (NR, 40–280)	33	122 (102–176)	122 (99–176)	135 (107–329)
Creatinine mg/dL (NR, 0.7–1.3)	64	0.89 (0.8–1)	0.92 (0.82–1.16)	0.85 (0.73–0.97)
D-dimer, ng/mL (NR, 0–500)	26	1075 (752–1256)	1088 (745–1824)	758 (752–1647)

Serum ferritin, ng/L (NR, 22–322)	3	817 (520–852)	835 (817–852)	520
Platelet count, ×10 ⁹ /L (NR, 150–370)	65	185 (170–224)	185 (165–225)	205 (175– 265)
IL-6, pg/mL (NR, 0–3.4)	3	30.9 (11.5– 244.0)	30.9 (11.5–244)	-
Lactate dehydrogenase, U/L (NR, 100–190)	33	365 (323–451)	388 (332–520)	328 (240– 401)
Procalcitonin, ng/mL (NR, 0–0.5)	17	0.2 (0.1–0.5)	0.38 (0.12– 0.93)	0.08 (0.06– 0.16)
C-reactive protein, mg/L (NR, 0–5)	58	139.8 (109.8– 188.4)	151 (118.1– 203)	123.8 (25.1– 169.7)
Prothrombin time, s	63	11.2 (11.0– 11.4)	11.3 (11–11.5)	11.1 (10.5– 11.4)
High-sensitivity cardiac troponin I, ng/L (NR, 0–53.5)	7	24.6 (11.2– 92.7)	15.4 (11.2– 73.4)	80.2 (67.2– 92.7)

Abbreviations: ALT, alanine aminotransferase; IL-6, interleukin-6; IQR, interquartile range; NR, normal range.)

FIGURE

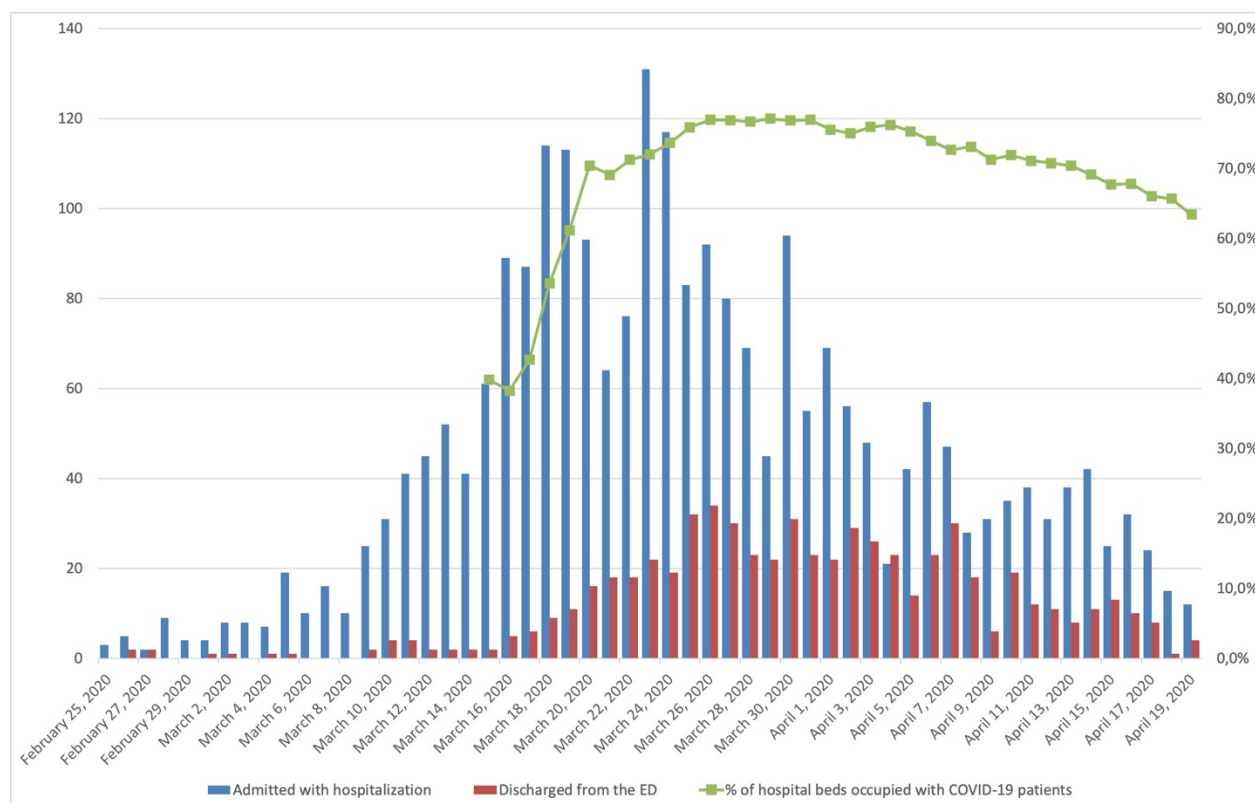


Figure 1. Patients attending emergency department per day between Feb 25th, 2020 and 19th April, 2020. In blue patients admitted with hospitalization and in red patients discharged from the emergency department. Green line represents % of hospital beds (including ICU) occupied with COVID-19 patients.

REFERENCES

1. Spiteri G, Fielding J, Diercke M et al. First cases of coronavirus disease 2019 (COVID-19) in the WHO European Region, 24 January to 21 February 2020. Euro Surveill. 2020 Mar;25(9). doi: 10.2807/1560-7917.ES.2020.25.9.2000178.
2. Instituto Nacional de Estadística. Población residente por fecha, sexo y edad. Madrid, España. [Accessed 26 Apr 2020]. Available from: <https://www.ine.es/jaxiT3/Tabla.htm?t=9663&L=0>
3. Centro de Coordinación de Alertas y Emergencias Sanitarias. Enfermedad por el coronavirus (COVID-19). España: Ministerio de Sanidad. [Accessed 26 Apr 2020]. Available from: <https://www.mscbs.gob.es/profesionales/saludPublica/ccayes/alertasActual/nCov-China/situacionActual.htm>
4. COVID-19. Situación actual en la Comunidad de Madrid. Informe de situación del 27 de abril. . [Accessed 26 Apr 2020]. Available from: https://www.comunidad.madrid/sites/default/files/doc/sanidad/200425_cam_covid19.pdf
5. Ministero della Salute. Covid-19, i casi in Italia il 25 aprile ore 18. . [Accessed 26 Apr 2020]. Available from: http://www.salute.gov.it/imgs/C_17_notizie_4605_0_file.pdf
6. New York City Health. COVID-19: Data. [Accessed 26 Apr 2020]. Available from: <https://www1.nyc.gov/site/doh/covid/covid-19-data.page>.

7. Novel Coronavirus (nCoV) Acute Respiratory Infection Clinical Characterisation data tools. nCoV Case records form Version 1.3. 24 Feb 2020. Adapted from Sprint Sari Case Report form by ISARIC. [Accessed 16 Feb 2020] Available from: https://media.tghn.org/medialibrary/2020/03/ISARIC_COVID-19_CRF_V1.3_24Feb2020.pdf
8. R Core Team. R: A Language and Environment for Statistical Computing. Vienna, Austria: R Foundation for Statistical Computing. Available from: <https://www.R-project.org>
9. Goyal P, Choi JJ, Pinheiro LC et al. Clinical Characteristics of Covid-19 in New York City. N Engl J Med. 2020 Apr 17. doi: 10.1056/NEJMc2010419.
10. Richardson S, Hirsch JS, Narasimhan M et al. Presenting Characteristics, Comorbidities, and Outcomes Among 5700 Patients Hospitalized With COVID-19 in the New York City Area. JAMA. 2020 Apr 22. doi:10.1001/jama.2020.6775.
11. Garg S, Kim L, Whitaker M et al. Hospitalization Rates and Characteristics of Patients Hospitalized with Laboratory-Confirmed Coronavirus Disease 2019 — COVID-NET, 14 States, March 1–30, 2020. MMWR Morb Mortal Wkly Rep. 2020 Apr 17;69(15):458-464.
12. Zhou F, Yu T, Du R et al. Clinical course and risk factors for mortality of adult inpatients with COVID-19 in Wuhan, China: a retrospective cohort study. Lancet. 2020 Mar 28;395(10229):1054-1062.

13. Wang D, Hu B, Hu C et al. Clinical Characteristics of 138 Hospitalized Patients With 2019 Novel Coronavirus–Infected Pneumonia in Wuhan, China. JAMA. 2020 Feb 7. doi: 10.1001/jama.2020.1585.
14. Huang C, Wang Y, Li X et al. Clinical features of patients infected with 2019 novel coronavirus in Wuhan, China. Lancet. 2020 Feb 15;395(10223):497-506.
15. Guan WJ, Ni ZY, Hu Y et al. Clinical Characteristics of Coronavirus Disease 2019 in China. N Engl J Med. 2020 Feb 28. doi: 10.1056/NEJMoa2002032
16. Centro Internacional sobre el envejecimiento. Estimaciones de la población de la provincia de Madrid. España. [Accessed 26 Apr 2020]. Available from: <https://cenie.eu/es/observatorio/demografia/madrid>
17. Spinato G, Fabbris C, Polesel J et al. Alterations in Smell or Taste in Mildly Symptomatic Outpatients With SARS-CoV-2 Infection. JAMA. 2020 Apr 22. doi: 10.1001/jama.2020.6771.
18. Shi S, Qin M, Shen B, Cai Y, Liu T, Yang F, et al. Association of Cardiac Injury With Mortality in Hospitalized Patients With COVID-19 in Wuhan, China. JAMA Cardiol. 2020 Mar 25. doi: 10.1001/jamacardio.2020.0950.

medRxiv preprint doi: <https://doi.org/10.1101/2020.04.29.20080853>; this version posted May 4, 2020. The copyright holder for this preprint (which was not certified by peer review) is the author/funder, who has granted medRxiv a license to display the preprint in perpetuity. It is made available under a [CC-BY-NC-ND 4.0 International license](#).

