

1 **The natural history and transmission potential of asymptomatic** 2 **SARS-CoV-2 infection**

3 Nguyen Van Vinh Chau¹, Vo Thanh Lam¹, Nguyen Thanh Dung¹, Lam Minh Yen², Ngo Ngoc
4 Quang Minh³, Le Manh Hung¹, Nghiem My Ngoc¹, Nguyen Tri Dung⁴, Dinh Nguyen Huy
5 Man¹, Lam Anh Nguyet², Le Thanh Hoang Nhat², Le Nguyen Truc Nhu², Nguyen Thi Han
6 Ny², Nguyen Thi Thu Hong², Evelyne Kestelyn^{2,5}, Nguyen Thi Phuong Dung², Tran Chanh
7 Xuan⁶, Tran Tinh Hien^{2,5}, Nguyen Thanh Phong¹, Tran Nguyen Hoang Tu¹, Ronald B.
8 Geskus^{2,5}, Tran Tan Thanh², Nguyen Thanh Truong¹, Nguyen Tan Binh⁷, Tang Chi Thuong⁷,
9 Guy Thwaites^{2,5}, and Le Van Tan², for OUCRU COVID-19 research group*

10 *Members of the Group are listed in the acknowledgements

11 ¹Hospital for Tropical Diseases, Ho Chi Minh City, Vietnam

12 ²Oxford University Clinical Research Unit, Ho Chi Minh City, Vietnam

13 ³Children's Hospital 1, Ho Chi Minh City, Vietnam

14 ⁴Center for Disease Control and Prevention, Ho Chi Minh City, Vietnam

15 ⁵Centre for Tropical Medicine and Global Health, Nuffield Department of Medicine, University
16 of Oxford, Oxford, UK

17 ⁶Cu Chi Hospital, Ho Chi Minh City, Vietnam

18 ⁷Department of Health, Ho Chi Minh City, Vietnam

19 **Correspondence:** Nguyen Van Vinh Chau, email: chaunvv@oucru.org, and Le Van Tan,
20 email: tanlv@oucru.org

21 **Abstract:** 248

22 **Main text:** 2788

23 **Running title:** Asymptomatic SARS-CoV-2 infection

24 **Key words:** COVID-19, SARS-CoV-2, coronaviruses, pandemic, Vietnam

25 **ABSTRACT**

26 **Background**

27 Little is known about the natural history of asymptomatic SARS-CoV-2 infection or its
28 contribution to infection transmission.

29 **Methods**

30 We conducted a prospective study at a quarantine centre for COVID-19 in Ho Chi Minh City,
31 Vietnam. We enrolled quarantined people with RT-PCR-confirmed SARS-CoV-2 infection,
32 collecting clinical data, travel and contact history, and saliva at enrolment and daily
33 nasopharyngeal throat swabs (NTS) for RT-PCR testing. We compared the natural history and
34 transmission potential of asymptomatic and symptomatic individuals.

35 **Results**

36 Between March 10th and April 4th, 2020, 14,000 quarantined people were tested for SARS-
37 CoV-2; 49 were positive. Of these, 30 participated in the study: 13(43%) never had symptoms
38 and 17(57%) were symptomatic. 17(57%) participants acquired their infection outside Vietnam.
39 Compared with symptomatic individuals, asymptomatic people were less likely to have
40 detectable SARS-CoV-2 in NTS samples collected at enrolment (8/13 (62%) vs. 17/17 (100%)
41 $P=0.02$). SARS-CoV-2 RNA was detected in 20/27 (74%) available saliva; 7/11 (64%) in the
42 asymptomatic and 13/16 (81%) in the symptomatic group ($P=0.56$). Analysis of the probability
43 of RT-PCR positivity showed asymptomatic participants had faster viral clearance than
44 symptomatic participants ($P<0.001$ for difference over first 19 days). This difference was most
45 pronounced during the first week of follow-up. Two of the asymptomatic individuals appeared
46 to transmit the infection to up to four contacts.

47 **Conclusions**

48 Asymptomatic SARS-CoV-2 infection is common and can be detected by analysis of saliva or
49 NTS. NTS viral loads fall faster in asymptomatic individuals, but they appear able to transmit
50 the virus to others.

51 **BACKGROUND**

52 The rapid global spread of severe acute respiratory syndrome coronavirus-2 (SARS-CoV-2),
53 has prompted the World Health Organization to declare a pandemic. As of April 23rd, 2020,
54 more than 2.6 million confirmed cases and more than 180,000 deaths have been reported
55 globally. Vietnam reported its first confirmed cases on January 22nd, 2020 [1]. Yet, as of April
56 24th, a total of 270 cases have been reported, with no deaths [2].

57 The clinical syndrome caused by SARS-CoV-2 is called COVID-19 [3], an infectious disease
58 which varies from mild to severe, life-threatening respiratory infection. Asymptomatic
59 infection with SARS-CoV-2 has been reported [4-6] in up to 43% of those with proven
60 infection in a recent Italian study [7]. SARS-CoV-2 infected patients can be infectious prior to
61 symptom (COVID-19) development and cause transmission [8, 9]. Furthermore, there is some
62 evidence demonstrating the transmission potential of those with RT-PCR confirmed infection
63 who never develop symptoms during their infection (asymptomatic transmission) [4, 5, 7],
64 suggesting asymptomatic infection may play an important role in the spread of SARS-CoV-2.

65 SARS-CoV-2 is transmitted by respiratory droplets from infected people if they cough and/or
66 sneeze. In the absence of respiratory symptoms, the mechanism by which asymptomatic
67 individuals transmit SARS-CoV-2 to their contacts remains unclear. In most countries, only
68 patients with moderate or severe disease are admitted to hospital for management [10-13],
69 leaving those without symptoms, or with mild disease, uncharacterized, especially concerning
70 their laboratory and virological findings.

71 We therefore studied asymptomatic individuals with SARS-CoV-2 infection and those with
72 mild disease identified as part of ongoing contact-tracing and airport quarantine implemented in
73 Ho Chi Minh City (HCMC), Vietnam. Our aims were to compare the duration of viral detection

74 and abundance in the respiratory tract, including saliva, of asymptomatic and mildly
75 symptomatic patients, and assess their ability to transmit the virus to others.

76 **MATERIALS AND METHODS**

77 **Vietnam containment approach**

78 Since January 2020, various control measures, including isolation of confirmed cases, contact-
79 tracing, airport quarantine and social distancing have been implemented in Vietnam with
80 increasing stringency as the pandemic progressed worldwide (**Figure 1**) [14, 15]. Accordingly,
81 anyone known to have been in contact with a confirmed COVID-19 case, or having travelled to
82 Vietnam from a COVID-19 affected country, were isolated for ≥ 14 days at a designated
83 isolation center.

84 From the second week of March 2020, all isolated individuals were subject to serial SARS-
85 CoV-2 nasopharyngeal throat swab (NTS) screening by real time RT-PCR. A confirmed case
86 was established if two independent RT-PCR assays (E gene and RdRP RT-PCR assays) were
87 positive [16]. Confirmed cases were admitted to a designated COVID-19 hospital for follow-up
88 until they recovered and/or had at least two consecutive days with negative SARS-CoV-2 RT-
89 PCR NTS [17].

90 **Setting**

91 The Hospital for Tropical Diseases (HTD) is a tertiary referral infectious diseases hospital
92 responsible for receiving and treating patients with COVID-19 in southern Vietnam. From
93 January 2020 to the first week of April, HTD was responsible for RT-PCR screening of 80%
94 of quarantined people in HCMC.

95 In addition to its main campus in the centre of HCMC, HTD has two designated 300-bed
96 centres for the care of confirmed/suspected cases with COVID-19, namely Cu Chi and Can Gio

97 Hospitals, located approximately 60 km to the West and East, respectively, of HCMC (**Figure**
98 **2A**). The present study was conducted at Cu Chi Hospital.

99 **Patient enrollment and data collection**

100 We enrolled individuals with confirmed SARS-CoV-2 infection admitted to Cu Chi Hospital
101 from March 10th to April 4th, 2020. From each participant, we prospectively collected
102 demographic and clinical data, travel history and information concerning contact with
103 confirmed COVID-19 cases, using standardized paper case record forms.

104 We collected NTS, combining them into a single tube containing 1ml of viral transport
105 medium. NTS were taken daily from enrolment to hospital discharge (**Figure 2B**).
106 Additionally, a saliva sample was obtained at enrolment. After collections, clinical samples
107 were stored at -4⁰C at the study site and were then transferred to the HTD laboratory in HCMC
108 within 4 hours for analysis.

109 **Viral RNA extraction and SARS-CoV-2 RT-PCR analysis**

110 We manually extracted viral RNA from 140 ul of NTS and saliva samples (if volume was
111 sufficient for testing) using the QIAamp viral RNA kit (QIAGEN GmbH, Hilden, Germany), and
112 then recovered the cleaned up RNA in 50 ul of elution buffer provided with the kit. Since we
113 enrolled patients who had a confirmed diagnosis by two independent RT-PCRs (E gene and
114 RdRp assays) as per the WHO recommendation [16], we used E gene assay for testing of samples
115 collected from enrolment onward. Real time RT-PCR were carried out as previously described
116 [16].

117 **Data analysis**

118 For viral-load associated analysis, in the absence of quantitative RT-PCR results, we use cycle
119 threshold (Ct) values as surrogates. We used the t-test to compare the difference in measured Ct

120 values obtained at enrolment between the two groups, Wilcoxon signed-rank test to compare
121 the measured Ct values between NST and saliva, and chi-square test to compare two
122 proportions. We compared the trend in the detection probability of SARS-CoV-2 and the viral
123 RNA load in NTS between asymptomatic and symptomatic individuals. For the detection
124 probability, we fitted a logistic regression model that quantifies the probability to test positive
125 over time. We used generalized estimating equations (geepack package in R [18]) to correct for
126 the repeated measurements per individual. We assumed that those who left the study earlier,
127 after several days with a negative test result, remained negative until day 19. For the trend in
128 Ct, we used a zero-inflated mixed effects model for semi-continuous data (GLMMadaptive
129 package in R). Since the Ct data have an upper threshold of 40.5, we used the transformation
130 $Y=40.5-Ct$. Hence, an undetectable viral load was given the value zero. We report the mean
131 value on the original scale, which is a weighted combination of the value 40.5 for those that test
132 negative and the measured value of those that test positive. Additionally, we compared the
133 measured Ct values between the two groups; for this we used a random effects model. Further
134 details can be found in the supplementary code. Note that inference with respect to measured Ct
135 values should be interpreted with caution, because the subgroup of negative values is
136 selectively excluded. Apart from R, we also performed the analysis in SPSS V23.0 (IBM Corp,
137 NY, US) and generated the figures using GraphPad PRISM[®] V5.04 (GraphPad Software Inc,
138 CA, US) and R.

139 **Ethics**

140 This clinical study received approvals from the Institutional Review Board of the HTD and the
141 Oxford Tropical Research Ethics Committee of the University of Oxford. Study participants
142 gave their written informed consent.

143 **RESULTS**

144 **RT-PCR screening of quarantined people**

145 Between March 10th and April 4th, 2020, approximately 14,000 people were referred to one of
146 nine designated quarantine centres deployed across HCMC, and were screened for SARS-CoV-
147 2 by RT-PCR of NTS. Forty-nine people had a positive test, accounting for 96% (49/51) of all
148 reported cases in HCMC during the same period. The other two self-presented to local hospitals
149 after falling ill. Of these 49, 33 (67%) were admitted to Cu Chi Hospital, and 30 (30/33, 91%)
150 agreed to participate in the clinical study (**Figure 2B**).

151 **Baseline characteristics of the study participants**

152 Of the 30 study participants, 16 were imported cases (i.e. they acquired the infection outside of
153 Vietnam, **Supplementary Figure 2**), and 14 acquired the infection locally; all 14 had an
154 epidemiological link with two community transmission clusters occurring in HCMC during the
155 study period. Of the locally acquired infections, 7 (50%) were asymptomatic; while 6 (38%) of
156 the imported cases were asymptomatic. Those with locally acquired infection were more likely
157 to be male than those with infection acquired outside of Vietnam (**Table 2**).

158 Seventeen of the participants had mild respiratory disease; i.e. no requirement for
159 supplementary oxygen during hospitalization. None of the participants developed severe
160 disease. The other 13 patients had no symptoms or signs of infection throughout their hospital
161 admission. The demographic and laboratory characteristics of the two groups were similar at
162 enrolment (**Table 1 and 2**). A small proportion of symptomatic patients presented with diarrhea
163 and/or lost their sense of smell. None of the 30 participants had abnormal findings on chest
164 radiographs.

165 **Viral detection in NTS and saliva samples**

166 Compared with symptomatic patients, those with asymptomatic infection were less likely to
167 have detectable SARS-CoV-2 in NTS samples collected at enrolment (8/13 (62%) vs. 17/17
168 (100%) $P=0.02$). However, 4/5 patients whose NTS collected at enrolment were negative had
169 an NTS positive result in one of the subsequent sampling days, but with a high Ct value
170 (**Supplementary Figure 2**), suggesting these patients had low viral load in their respiratory
171 samples.

172 Of the 30 study participants, 27 (90%) had a saliva sample collected at enrollment with
173 sufficient volume for RT-PCR analysis. SARS-CoV-2 RNA was detected in 20/27 (74%)
174 available saliva, 7/11 (64%) in the asymptomatic and 13/16 (81%) in the symptomatic group
175 ($P=0.56$). There was one patient, whose NTS collected at enrolment was negative but saliva
176 was positive. Accordingly, a combination of both NTS and saliva samples collected at
177 enrolment slightly increased the diagnostic yield of samples collected at enrolment of the
178 asymptomatic group

179 **Quantification of viral RNA in NTS and saliva at enrolment**

180 At enrolment, among those who were RT-PCR positive, the viral loads measured in NTS and
181 saliva were similar in asymptomatic and symptomatic patients (**Figure 3A**). However, among
182 asymptomatic patients who had both saliva and NTS collected, higher viral load was observed
183 in NTS than in saliva ($P=0.031$) (**Figure 3B**). A similar trend was observed for symptomatic
184 cases ($P=0.064$) (**Figure 3B**).

185 **Quantification of viral RNA and duration of viral detection in NTS**

186 During follow-up, Ct-values differed between the two groups ($P=0.027$ for difference over first
187 19 days, **Figure 4A**), with asymptomatic patients having lower viral load than the symptomatic

188 patients. If restricted to RT-PCR positive samples, viral RNA abundance was similar to slightly
189 lower in the asymptomatic participants ($P=0.086$) (**Supplementary Figure 3**).

190 Analysis of the probability of RT-PCR positivity showed asymptomatic participants had a
191 lower probability of having a positive RT-PCR result (i.e. a faster viral clearance) than
192 symptomatic participants ($P<0.001$ for difference over first 19 days, **Figure 4B**). This
193 difference was most pronounced during the first week of follow-up. After this period, the
194 probability of detection quickly fell to almost zero in both groups. The majority of the positive
195 patients were weakly positive (Ct value >32) in this period.

196 **Presumed transmission from asymptomatic carriers**

197 Fourteen participants were identified to have an epidemiological link with two community-
198 transmission clusters occurring in HCMC during the study period. Cluster #1 had three patients
199 participating in the present study. Of these three, 2 had contact with a confirmed case on March
200 2nd, who was not enrolled in this study because this patient was admitted to a different hospital.
201 Subsequently, one developed fever, runny nose and sore throat on March 12th, 2020, suggesting
202 an incubation period of 10 days, and tested positive for SARS-CoV-2 on March 13rd, 2020. The
203 other had no fever or any signs/symptoms suggestive of infection and was positive for SARS-
204 CoV-2 on March 14, 2020. Two days later, a colleague of these two cases developed mild
205 respiratory symptoms, including runny nose and loss of sense of smell, and tested positive for
206 SARS-CoV-2 on March 17th, 2020.

207 Cluster #2 included 11 study participants, including 7 with asymptomatic infection (**Figure 5**).
208 We identified a transmission chain involving an asymptomatic participant (patient #19) who
209 was positive for SARS-CoV-2 on March 25 (Ct value of NTS: 24, and saliva: 28).
210 Subsequently, a contact of this case (patient #22) was positive for SARS-CoV-2 on March 23rd

211 (Ct value of NTS: 23, and saliva: 34), although this contact did not develop symptoms.
212 Furthermore, on March 27th, a contact of both patient #19 and #22 (patient #27) presented with
213 cough and sore throat, with positive NTS for SARS-COV-2. Additionally, patient #26, contact
214 of patient #22, who was also a contact of patient #19, was confirmed with SARS-CoV-2 on
215 March 20th, also without any symptoms. An additional transmission chain from cluster #2 was
216 recorded between patient #24 and #29, both of whom were asymptomatic (**Figure 5**).

217 **DISCUSSION**

218 Despite the rapid global spread of SARS-CoV-2, community transmission of SARS-CoV-2 in
219 Vietnam remains exceptionally low [2]. Indeed, while the first reported cases date back to
220 January 23rd, 2020, as of April 24th, there have been only 270 reported cases in Vietnam,
221 including 170 imported cases and 100 cases acquired locally [2, 19]. During the same period,
222 the number of confirmed cases worldwide increased from 582 to more than 2.7 million.

223 Social distancing, school closure, isolation of confirmed cases and their contacts, and airport
224 quarantine [14, 15] coupled with RT-PCR testing for all the isolated people have been the main
225 measures leading to the current success of Vietnam's COVID-19 control [14, 15]. The
226 quarantine of large numbers of contacts has offered a unique opportunity to study the natural
227 history of SARS-CoV-2 infection, especially in those without symptoms.

228 Using data from 30 patients, representing 56% of the reported case in HCMC since the
229 beginning of the epidemic, we provide important insights into the natural history of SARS-
230 CoV-2 infection. We found that 43% of SARS-CoV-2 positive cases were asymptomatic, with
231 comparable detection rates and viral load of SARS-CoV-2 in saliva between symptomatic and
232 asymptomatic cases. However, at enrolment and during follow up asymptomatic individuals
233 had a lower probability of having a positive RT-PCR diagnosis and lower viral load in NTS. Yet,

234 despite these data suggesting faster viral clearance from the respiratory tract, we found good
235 evidence these asymptomatic individuals transmitted the virus to others.

236 SARS-CoV-2 RNA has previously been detected in saliva of COVID-19 patients [20, 21],
237 demonstrating the utility potential of easy-to-collect saliva samples for the diagnosis of
238 COVID-19 [22]. However, to the best of our knowledge, detection of SARS-CoV-2 in saliva of
239 asymptomatic cases has not been reported. Slightly higher viral loads (lower Ct values in
240 **Figure 3**) were found in NTS than saliva, but saliva is an easier specimen to collect and may
241 represent a better sample for mass disease-screening programmes. The ease of detecting virus
242 in the saliva is also consistent with the known high infectiousness of SARS-CoV-2 and its
243 ready ability to spread through droplet transmission even without respiratory symptoms.

244 Although the viral loads at enrolment were similar between the asymptomatic and symptomatic
245 participants (if restricted to the positive cases), the virus appeared to be cleared faster from the
246 respiratory tract in asymptomatic people. These differences suggest symptoms and subsequent
247 disease severity may depend on the size of the infectious viral inoculum and/or an individual's
248 ability to clear the infection. However, we cannot also rule out that the time from infection to
249 sample collection was longer in asymptomatic individuals. Other reasons for asymptomatic
250 infection include pre-existing cross-immunity as a consequence of previous exposure to
251 common human coronavirus, which may enhance immunity and control of the infection in
252 some individuals [23].

253 Nevertheless, despite faster viral clearance in asymptomatic individuals, we found good
254 evidence that they were still able to transmit the infection. Two of the asymptomatic
255 participants were the highly likely origin of at least 2, and possible 4 further infections.
256 Transmission from asymptomatic and especially pre-symptomatic individuals has been

257 suggested previously [4-6, 8, 9] and may explain why the virus is so hard to control. The
258 finding supports the Vietnam approach of vigorous case-finding, quarantining, and testing and
259 suggests they are essential of the infection is to be controlled.

260 The strengths of our study include the inclusion of the majority of asymptomatic and
261 symptomatic cases reported in southern Vietnam over 4 weeks, without selection bias based on
262 symptoms or disease severity. In so doing, we were able to study prospectively the full
263 spectrum of SARS-CoV-2 infection. Our study also has some limitations. We did not perform
264 virus culture to demonstrate the infectiousness of SARS-CoV-2 detected by RT-PCR in saliva,
265 although through contact history, we identified at least two transmission events from
266 completely asymptomatic individuals. Additionally, we did not perform chest computerized
267 tomography scans [24], which are more sensitive than chest radiographs for the detection of
268 lung abnormalities. Therefore, we may have underestimated the sub-clinical findings of SARS-
269 CoV-2 infection. Lastly, none of the participants developed severe disease. However, as of
270 April 23, 2020, only three severe COVID-19 cases have been reported in HCMC and there
271 have, as yet, been no COVID-19 related deaths in Vietnam.

272 To summarize, we demonstrate that a high proportion (43%) of quarantined people who were
273 RT-PCR positive for SARS-CoV-2 were asymptomatic. These individuals carried SARS-CoV-
274 2 in their respiratory tract and saliva, and were potentially contagious. They would not have
275 been identified without the control measures as currently applied in Vietnam. Therefore, our
276 findings emphasize the importance of contact tracing, airport quarantine and RT-PCR screening
277 for SARS-CoV-2 among isolated people in controlling the ongoing pandemic.

278 **ACKNOWLEDGEMENTS**

279 This study was funded by the Wellcome Trust of Great Britain (106680/B/14/Z and
280 204904/Z/16/Z).

281 We are indebted to Dr Vu Thi Ty Hang, Dr Phan Nguyen Quoc Khanh, Ms Nguyen Thanh Ngoc,
282 Ms Le Kim Thanh, and the OUCRU IT/CTU departments, especially Mr Ho Van Hien and Dr
283 Nguyen Than Ha Quyen, for their support.

284 We thank Professor Lin-Fa Wang and Dr Danielle Anderson of Duke-NUS Medical School,
285 Singapore for their guidance in the development of diagnostic reagents in this study.

286 We thank the patients for their participations in this study and the doctors and nurses of Cu Chi
287 Hospital, who cared for the patients and provided the logistic support with the study.

288 **OUCRU COVID-19 Research Group**

289 **Hospital for Tropical Diseases, Ho Chi Minh City, Vietnam:** Nguyen Van Vinh Chau,
290 Nguyen Thanh Dung, Le Manh Hung, Huynh Thi Loan, Nguyen Thanh Truong, Nguyen Thanh
291 Phong, Dinh Nguyen Huy Man, Nguyen Van Hao, Duong Bich Thuy, Nghiem My Ngoc,
292 Nguyen Phu Huong Lan, Pham Thi Ngoc Thoa, Tran Nguyen Phuong Thao, Tran Thi Lan
293 Phuong, Le Thi Tam Uyen, Tran Thi Thanh Tam, Bui Thi Ton That, Huynh Kim Nhung, Ngo
294 Tan Tai, Tran Nguyen Hoang Tu, Vo Trong Vuong, Dinh Thi Bich Ty, Le Thi Dung, Thai Lam
295 Uyen, Nguyen Thi My Tien, Ho Thi Thu Thao, Nguyen Ngoc Thao, Huynh Ngoc Thien
296 Vuong, Pham Ngoc Phuong Thao, Phan Minh Phuong

297 **Oxford University Clinical Research Unit, Ho Chi Minh City, Vietnam:** Dong Thi Hoai
298 Tam, Evelyne Kestelyn, Donovan Joseph, Ronald Geskus, Guy Thwaites, H. Rogier van
299 Doorn, Huynh Le Anh Huy, Huynh Ngan Ha, Huynh Xuan Yen, Jennifer Van Nuil, Jeremy
300 Day, Joseph Donovan, Katrina Lawson, Lam Anh Nguyet, Lam Minh Yen, Le Nguyen Truc
301 Nhu, Le Thanh Hoang Nhat, Le Van Tan, Sonia Lewycka Odette, Louise Thwaites, Maia
302 Rabaa, Marc Choisy, Mary Chambers, Motiur Rahman, Ngo Thi Hoa, Nguyen Thanh Thuy
303 Nhien, Nguyen Thi Han Ny, Nguyen Thi Kim Tuyen, Nguyen Thi Phuong Dung, Nguyen Thi
304 Thu Hong, Nguyen Xuan Truong, Phan Nguyen Quoc Khanh, Phung Le Kim Yen, Sophie
305 Yacoub, Thomas Kesteman, Nguyen Thuy Thuong Thuong, Tran Tan Thanh, Tran Tinh Hien,
306 Vu Thi Ty Hang

307 **Center for Disease Control and Prevention, Ho Chi Minh City, Vietnam:** Nguyen Tri
308 Dung, Le Hong Nga

309 REFERENCES

- 310 1. Phan, L.T., T.V. Nguyen, Q.C. Luong, T.V. Nguyen, H.T. Nguyen, H.Q. Le, T.T.
311 Nguyen, T.M. Cao, and Q.D. Pham, *Importation and Human-to-Human Transmission*
312 *of a Novel Coronavirus in Vietnam*. N Engl J Med, 2020. **382**(9): p. 872-874.
- 313 2. Ministry of Health, Vietnam. <https://ncov.moh.gov.vn/>.
- 314 3. Zhu, N., D. Zhang, W. Wang, X. Li, B. Yang, J. Song, X. Zhao, B. Huang, W. Shi, R.
315 Lu, et al., *A Novel Coronavirus from Patients with Pneumonia in China, 2019*. N Engl J
316 Med, 2020. **382**(8): p. 727-733.
- 317 4. Bai, Y., L. Yao, T. Wei, F. Tian, D.Y. Jin, L. Chen, and M. Wang, *Presumed*
318 *Asymptomatic Carrier Transmission of COVID-19*. JAMA, 2020.
- 319 5. Chen, L., Q. Li, D. Zheng, H. Jiang, Y. Wei, L. Zou, L. Feng, G. Xiong, G. Sun, H.
320 Wang, et al., *Clinical Characteristics of Pregnant Women with Covid-19 in Wuhan,*
321 *China*. N Engl J Med, 2020.
- 322 6. Gudbjartsson, D.F., A. Helgason, H. Jonsson, O.T. Magnusson, P. Melsted, G.L.
323 Norddahl, J. Saemundsdottir, A. Sigurdsson, P. Sulem, A.B. Agustsdottir, et al., *Spread*
324 *of SARS-CoV-2 in the Icelandic Population*. N Engl J Med, 2020.
- 325 7. Lavezzo, E., E. Franchin, C. Ciavarella, G. Cuomo-Dannenburg, L. Barzon, C. Del
326 Vecchio, L. Rossi, R. Manganelli, A. Loregian, N. Navarin, et al., 2020.
- 327 8. Wei, W.E., Z. Li, C.J. Chiew, S.E. Yong, M.P. Toh, and V.J. Lee, *Presymptomatic*
328 *Transmission of SARS-CoV-2 - Singapore, January 23-March 16, 2020*. MMWR Morb
329 Mortal Wkly Rep, 2020. **69**(14): p. 411-415.
- 330 9. Arons, M.M., K.M. Hatfield, S.C. Reddy, A. Kimball, A. James, J.R. Jacobs, J. Taylor,
331 K. Spicer, A.C. Bardossy, L.P. Oakley, et al., *Presymptomatic SARS-CoV-2 Infections*
332 *and Transmission in a Skilled Nursing Facility*. N Engl J Med, 2020.
- 333 10. Goyal, P., J.J. Choi, L.C. Pinheiro, E.J. Schenck, R. Chen, A. Jabri, M.J. Satlin, T.R.
334 Champion, Jr., M. Nahid, J.B. Ringel, et al., *Clinical Characteristics of Covid-19 in New*
335 *York City*. N Engl J Med, 2020.
- 336 11. Wang, Z., B. Yang, Q. Li, L. Wen, and R. Zhang, *Clinical Features of 69 Cases with*
337 *Coronavirus Disease 2019 in Wuhan, China*. Clin Infect Dis, 2020.
- 338 12. Grasselli, G., A. Zangrillo, A. Zanella, M. Antonelli, L. Cabrini, A. Castelli, D. Cereda,
339 A. Coluccello, G. Foti, R. Fumagalli, et al., *Baseline Characteristics and Outcomes of*
340 *1591 Patients Infected With SARS-CoV-2 Admitted to ICUs of the Lombardy Region,*
341 *Italy*. JAMA, 2020.
- 342 13. Wolfel, R., V.M. Corman, W. Guggemos, M. Seilmaier, S. Zange, M.A. Muller, D.
343 Niemeyer, T.C. Jones, P. Vollmar, C. Rothe, et al., *Virological assessment of*
344 *hospitalized patients with COVID-2019*. Nature, 2020.
- 345 14. Nguyen, T.H.D. and D.C. Vu, *Summary of the COVID-19 outbreak in Vietnam -*
346 *Lessons and suggestions*. Travel Med Infect Dis, 2020: p. 101651.
- 347 15. Dinh, L., P. Dinh, P.D.M. Nguyen, D.H.N. Nguyen, and T. Hoang, *Vietnam's response*
348 *to COVID-19: Prompt and proactive actions*. J Travel Med, 2020.
- 349 16. Corman, V.M., O. Landt, M. Kaiser, R. Molenkamp, A. Meijer, D.K.W. Chu, T.
350 Bleicker, S. Brünink, J. Schneider, M.L. Schmidt, et al., *Detection of 2019 novel*
351 *coronavirus (2019-nCoV) by real-time RT-PCR*. Eurosurveillance, 2020. **25**(3).
- 352 17. *Clinical management of severe acute respiratory infection when COVID-19 is*
353 *suspected*. WHO Interim guidance, 13 March 2020.

- 354 18. Team, R.C., *R: A language and environment for statistical computing*. . R Foundation
355 for Statistical Computing, Vienna, Austria. URL <https://www.R-project.org/>. 2019.
- 356 19. Thanh, H.N., T.N. Van, H.N.T. Thu, B.N. Van, B.D. Thanh, H.P.T. Thu, A.N.T. Kieu,
357 N.N. Viet, G.B. Marks, G.J. Fox, et al., *Outbreak investigation for COVID-19 in*
358 *northern Vietnam*. *Lancet Infect Dis*, 2020.
- 359 20. To, K.K., O.T. Tsang, C. Chik-Yan Yip, K.H. Chan, T.C. Wu, J.M.C. Chan, W.S.
360 Leung, T.S. Chik, C.Y. Choi, D.H. Kandamby, et al., *Consistent detection of 2019 novel*
361 *coronavirus in saliva*. *Clin Infect Dis*, 2020.
- 362 21. To, K.K.-W., O.T.-Y. Tsang, W.-S. Leung, A.R. Tam, T.-C. Wu, D.C. Lung, C.C.-Y.
363 Yip, J.-P. Cai, J.M.-C. Chan, T.S.-H. Chik, et al., *Temporal profiles of viral load in*
364 *posterior oropharyngeal saliva samples and serum antibody responses during infection*
365 *by SARS-CoV-2: an observational cohort study*. *The Lancet Infectious Diseases*, 2020.
- 366 22. Xu, R., B. Cui, X. Duan, P. Zhang, X. Zhou, and Q. Yuan, *Saliva: potential diagnostic*
367 *value and transmission of 2019-nCoV*. *Int J Oral Sci*, 2020. **12**(1): p. 11.
- 368 23. Okba, N.M.A., M.A. Muller, W. Li, C. Wang, C.H. GeurtsvanKessel, V.M. Corman,
369 M.M. Lamers, R.S. Sikkema, E. de Bruin, F.D. Chandler, et al., *Severe Acute*
370 *Respiratory Syndrome Coronavirus 2-Specific Antibody Responses in Coronavirus*
371 *Disease 2019 Patients*. *Emerg Infect Dis*, 2020. **26**(7).
- 372 24. Inui, S., A. Fujikawa, M. Jitsu, N. Kunishima, S. Watanabe, Y. Suzuki, S. Umeda, and
373 Y. Uwabe, *Chest CT Findings in Cases from the Cruise Ship “Diamond Princess” with*
374 *Coronavirus Disease 2019 (COVID-19)*. *Radiologu: Cardiothoracic Imaging*, 2020. **In**
375 **press**.

FIGURE LEGENDS

376 **Figure 1:** Timelines of containment strategies applied in Vietnam and in Ho Chi Minh City
377 since the beginning of 2020 as the epidemic/pandemic progresses alongside the implementation
378 of SARS-CoV-2 RT-PCR testing and the duration of the clinical study.

379 **Note to figure 1:** *Initially China, followed by Korea, other European countries (Italy, France,
380 UK etc) and the USA

381 **Figure 2:** Settings and the clinical study. (A) Map showing the location of the Hospital for
382 Tropical Diseases (HTD) main campus and its designated COVID-19 centres in Cu Chi where
383 the clinical study was conducted, and Can Gio, (B) Flowchart illustrating the results of RT-
384 PCR screening of quarantined people between March 10th, 2020 and April 5th, 2020, and the
385 enrolment of patients in the clinical study

386 **Note to Figure 2:**

387 *Extrapolated from data extracted from the HTD database system. During this period, HTD
388 tested a total of 11,052 cases, accounting for 80% of isolated people in HCMC.

389 **The remaining cases were either treated at the main campus of HTD in HCMC or at the other
390 designated isolation center (Can Gio Hospital).

391 #One was transferred to the main campus of HTD 10 hours after admission and two were
392 transferred from the main campus of HTD after 5 and 6 days of hospitalization and were not
393 enrolled because of enrolment competition.

394 Maps were obtained from <https://mapchart.net/>.

395 **Figure 3:** Comparison of Ct values of SARS-CoV-2 real time RT-PCR obtained from
396 nasopharyngeal swabs (NTS) and saliva. (A) Data include results of RT-PCR analysis of all
397 available NTS and saliva collected from 30 participants at enrolment, (B) Data only include
398 results of RT-PCR analysis of paired NTS and saliva of 6 asymptomatic and 12 symptomatic
399 patients who had both sample types collected at enrolment.

400 **Figure 4:** Trends in Ct values and viral detection probability in nasopharyngeal throat swabs
401 over the course of hospitalization; (A) Changes of Ct values, relatively reflect the level of viral
402 load, (B) Dynamics of viral detection probability from enrolment onward

403 **Note to Figure 4:** Each dot represents one observed value (A) or the mean value (i.e.
404 frequency) per day (B), lines indicate mean and shades indicate 95% confidence interval.

405 **Figure 5:** Illustration of cases with an epidemiological link with community transmission
406 cluster #2.

407 **Figure 5:** Red circles indicate symptomatic patients, and blue circles indicate asymptomatic
408 cases. Patients sitting on the open circle are people of the cluster who first had contacts with
409 each other on the same day. Patient numbers correspond to the numbers presented in
410 Supplementary Figure 2.

411

412 **Supplementary Figure 1:** Map showing countries where the imported cases stayed before
413 travelling to Vietnam

414

415 **Note to supplementary Figure 1:** Maps were obtained from <https://mapchart.net/>

416 **Supplementary Figure 2:** Individuals data on Ct values of SARS-CoV-2 real-time RT-PCR
417 obtained from analysis of nasopharyngeal throat swabs collected at enrollment and during
418 follow-up

419 **Note to Supplementary Figure 2:** Horizontal dash lines indicate the assay cut off.

420 **Supplementary Figure 3:** Dynamics of Ct values during the course of quarantine or
421 hospitalization in nasopharyngeal throat swabs of people who remained RT-PCR positive.

Table 1: Baseline characteristics of the study participants

	All (N=30)	Symptomatic group (N=17)	Asymptomatic group (N=13)
Age in years, median (range)	29 (16–60)	27 (18–58)	30 (16–60)
Gender (female/male), n/n	15/15	9/8	6/7
Arriving in Vietnam from abroad, n(%)	16 (53)	10 (59)	6 (47)
Locally acquired infection, n(%)	14 (47)	7 (41)	7 (53)
Nationality, n(%)			
Vietnamese	19 (63)	12 (71)	7 (53)
Others	11 (37) [#]	5 (29) ^{##}	6 (46) ^κ
Days from confirmed diagnosis to enrolment, median (range)	2 (2 – 5)	2 (0 – 3)	2 (1 – 5)
Days from admission to enrolment, median (range)	1 (0 – 2)	1 (0 – 2)	1 (0 – 2)
Duration of stay (days)	16 (9-26)	16 (11-26)	15 (9-23)
Laboratory results, median (range) /normal range			
White-cell count (×10 ³ /per µl)	5.16 (3.1–9.9)/(4-11)	5.0 (3.4–8.3)	5.51 (3.15–4.83)
Lymphocyte counts (×10 ³ /per µl)	1.65 (0.56-2.94)/(1.5-4)	1.47 (0.56-2.94)	1.88 (1.17-2.5)
Hemoglobin ((g/dl)	14.3 (10–17.3)/13-18)	14.4 (11.6–16.8)	14.15 (10–17.3)
Hematocrit (%)	35.5 (28.5–42.3)/(37-52)	36.5 (28.5–42.3)	36 (35.78–42.27)
Platelet count (per µl)	257 (130–414)/(150-450)	249 (130–414)	265.5 (174–321)
Glucose (mmol/liter)	85 (6 –340)*/(70-130)	84.2 (68–340) [¥]	101.65 (64–146) [£]
Creatinine (mg/dl)	1.0 (0.9–1.5) [□] /(0.5-1.2)	1.0 (0.9–12.4) [□]	1 (0.96–1.54) [£]
Aspartate aminotransferase (U/liter)	22.5 (15.4–56.8)*/(<40)	22.5(17.4–56.8) [□]	17.4 (15.4–32.4) [£]
Alanine aminotransferase (U/liter)	22.3 (9.7-44.9)/(<37)	24 (10.2–34.8) [□]	19.15(9.7–44.9) [£]
Clinical signs/symptoms**			
Fever, n(%)	8 (27)	8 (47)	NA
Cough, n(%)	10 (33)	10 (59)	NA
Rhinorrhea, n(%)	3 (10)	3 (18)	NA
Fatigue, n(%)	1 (3)	1 (6)	NA
Diarrhea, n(%)	3 (10)	3 (18)	NA
Sore throat, n(%)	6 (20)	6 (36)	NA
Muscle pain, n(%)	3 (10)	3 (18)	NA
Headache, n(%)	2 (7)	2 (12)	NA
Abdominal pain, n(%)	1 (3)	1 (6)	NA
Lost sense of smell, n(%)	3 (10)	3 (18)	NA
Comorbidity, n(%)	2 (7)	2 (12) ^{##}	0

Note to Table 1: [#]Brazil (n=3), UK (n=3), Canada (n=2), America (n=1), Czech Republic (n=1), Italy (n=1), ^{##}UK (n=2), Canada (n=1), America (n=1), Czech Republic (n=1), ^κBrazil (n=3), UK (n=1), Canada (n=1), Italy (n=1), ^{*}n=17, [□]n=18, [¥]n=10, [£]n=6, ^{**}others (nausea, vomiting, short breathing, bleeding and taste disorder) were also recorded but none presented with these signs/symptoms, ^{##}degenerative spine in one and diabetes in one.

Table 2: Demographic of imported cases and cases of locally acquired infection

	Locally acquired infections (N=14)	Imported cases* (N=16)
Female gender, n (%)	4 (29%)	11 (69)
Age in years, median (range)	30.5 (23–51)	21.5 (16–60)
Asymptomatic, n (%)	7 (50)	6 (38)

Note to Supplementary Table 2: *Defined as cases arriving in Vietnam from abroad and positive for SARS-CoV-2 as part of airport quarantine and RT-PCR screening.

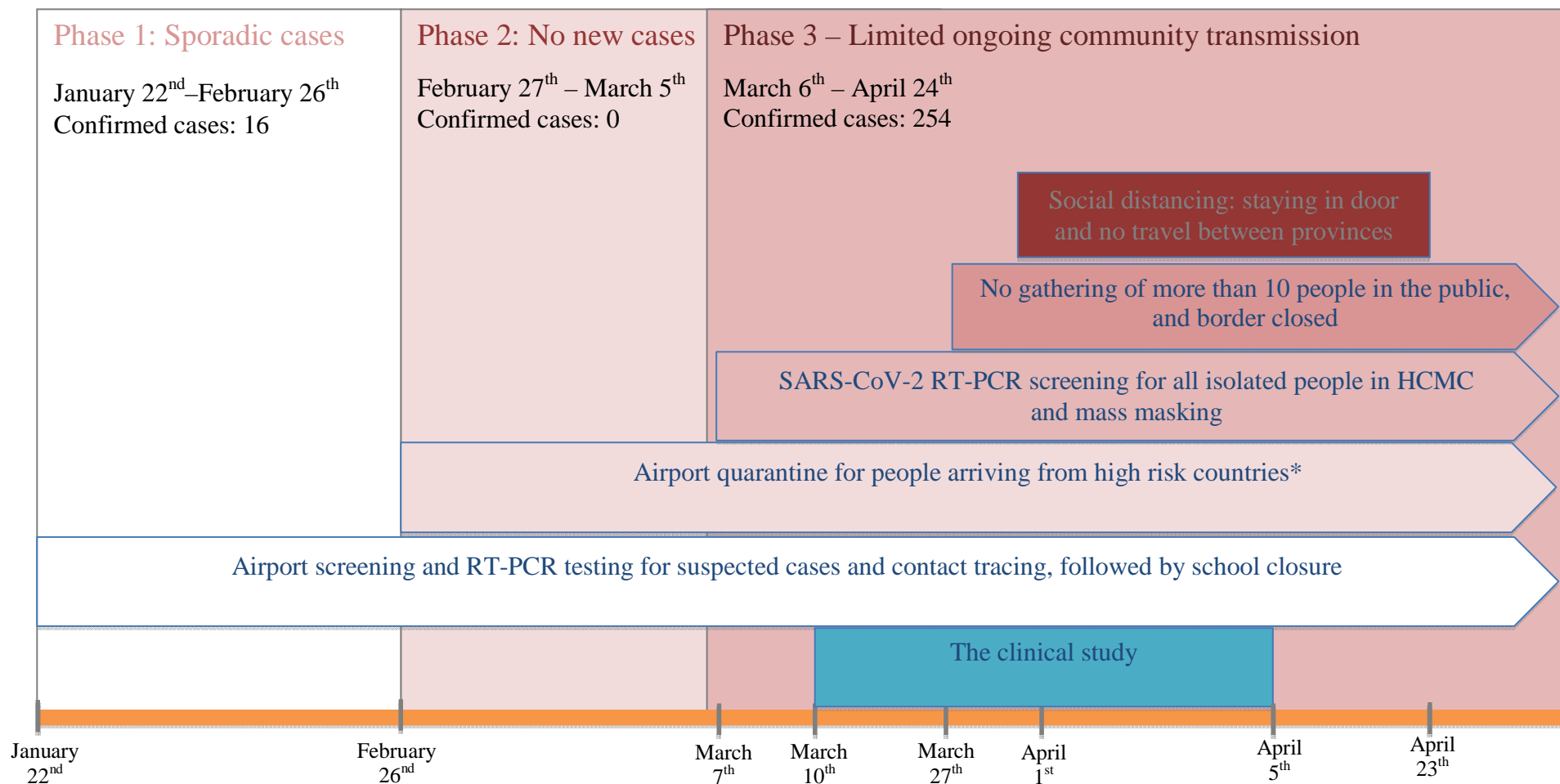


Figure 1: Timelines of containment strategies applied in Vietnam and in Ho Chi Minh City since the beginning of 2020 as the epidemic/pandemic progresses alongside the implementation of SARS-CoV-2 RT-PCR testing and the duration of the clinical study.

Note to figure 1: *Initially China, followed by Korea, other European countries (Italy, France, UK etc) and the USA

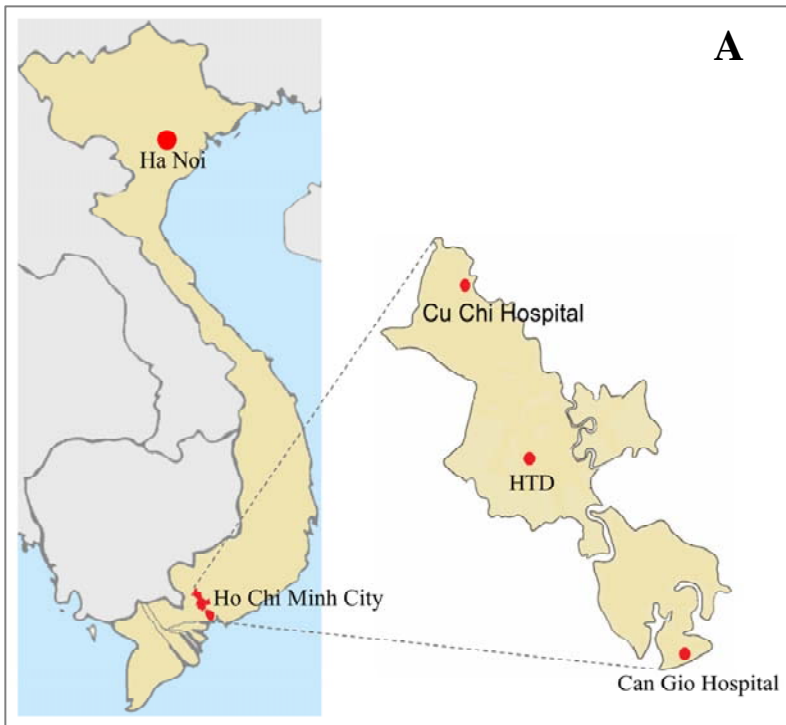


Figure 2: Settings and the clinical study. (A) Map showing the location of the Hospital for Tropical Diseases (HTD) main campus and its designated COVID-19 centres in Cu Chi where the clinical study was conducted, and Can Gio, (B) Flowchart illustrating the results of RT-PCR screening of quarantined people between March 10th, 2020 and April 5th, 2020, and the enrolment of patients in the clinical study

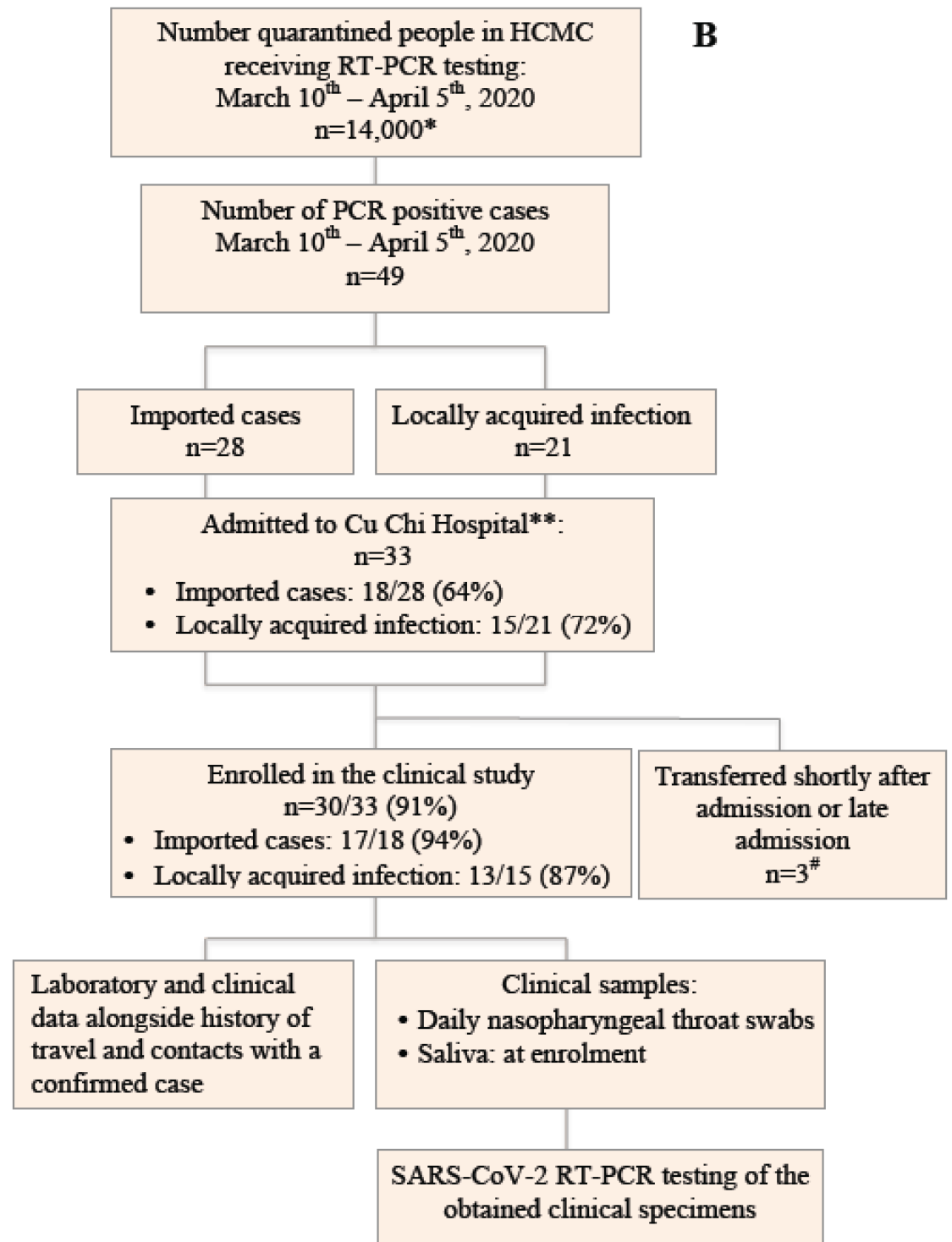
Note to Figure 2:

*Extrapolated from data extracted from the HTD database system. During this period, HTD tested a total of 11,052 cases, accounting for 80% of isolated people in HCMC.

**The remaining cases were either treated at the main campus of HTD in HCMC or at the other designated isolation center (Can Gio Hospital).

#One was transferred to the main campus of HTD 10 hours after admission and two were transferred from the main campus of HTD after 5 and 6 days of hospitalization and were not enrolled because of enrolment competition.

Maps were obtained from <https://mapchart.net/>.



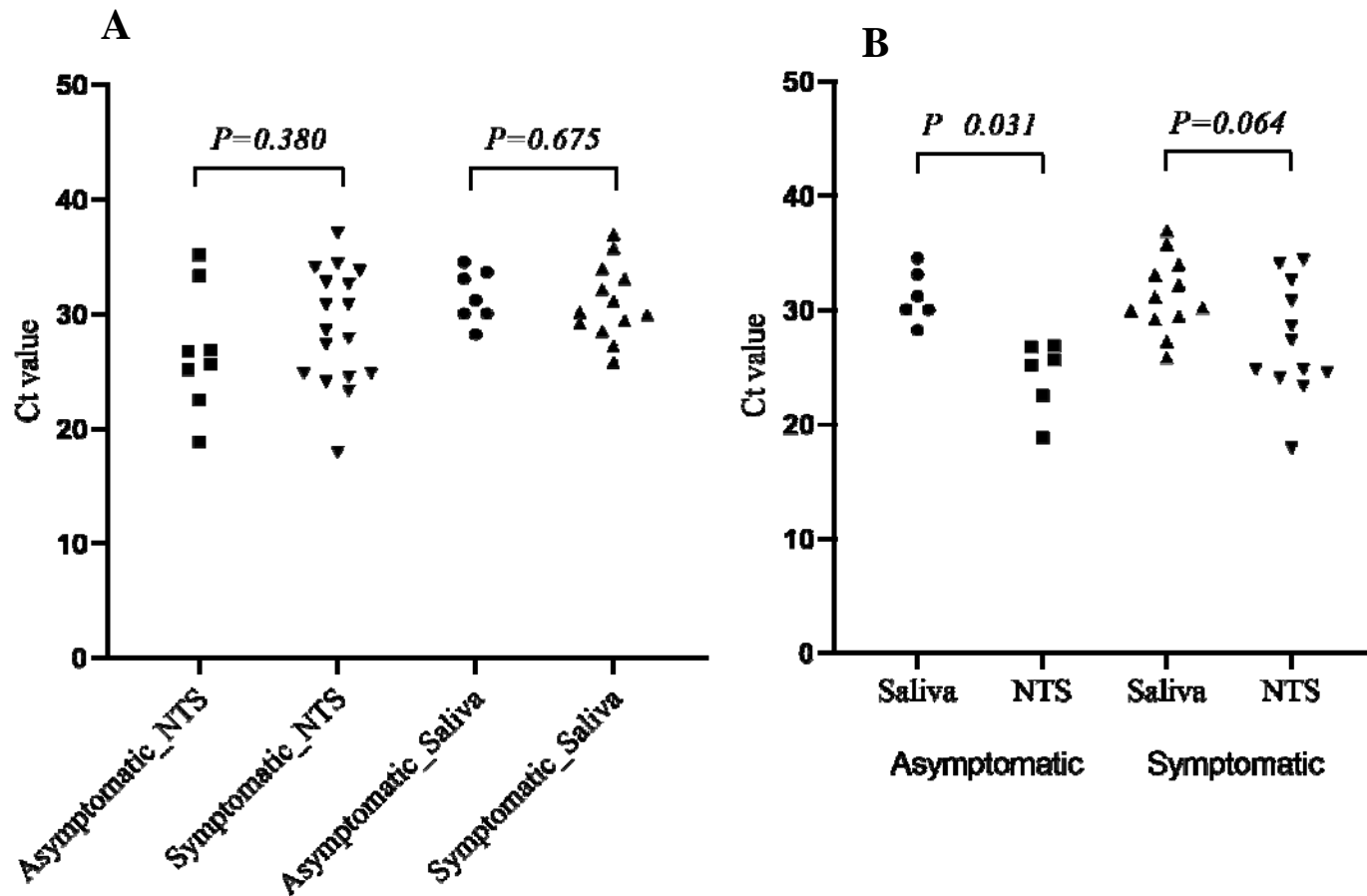
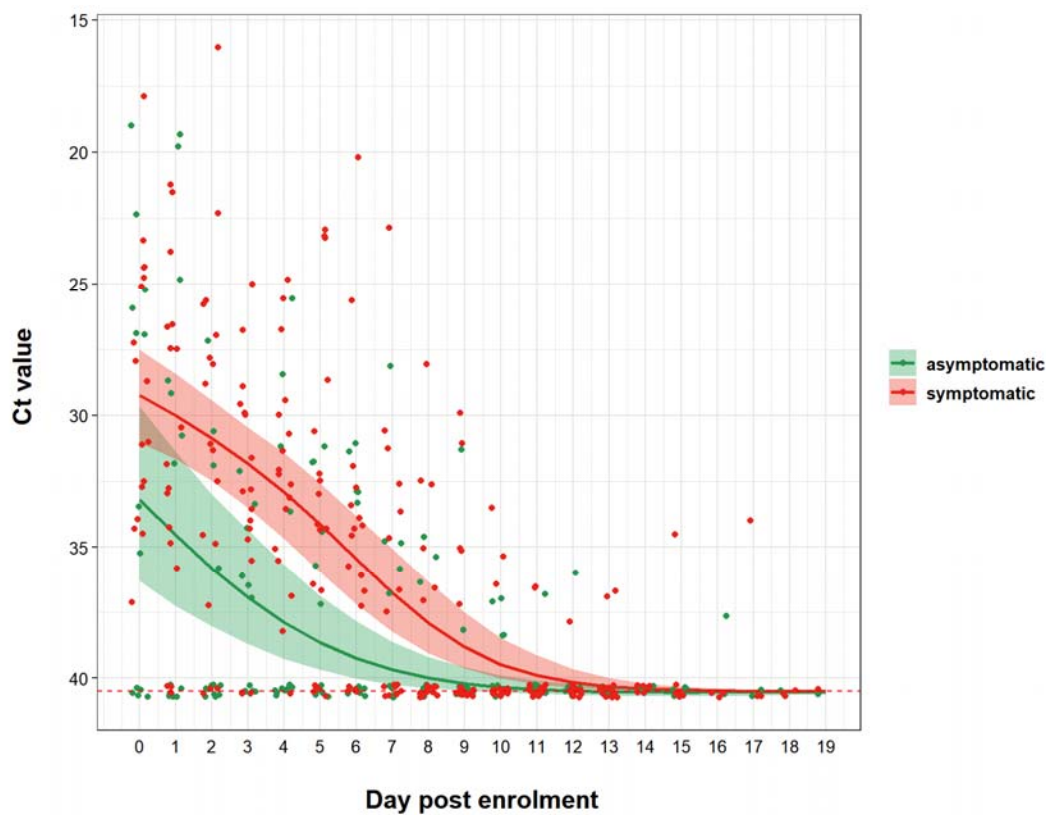


Figure 3: Comparison of Ct values of SARS-CoV-2 real time RT-PCR obtained from nasopharyngeal swabs (NTS) and saliva. (A) Data include results of RT-PCR analysis of all available NTS and saliva collected from 30 participants at enrolment, (B) Data only include results of RT-PCR analysis of paired NTS and saliva of 6 asymptomatic and 12 symptomatic patients who had both sample types collected at enrolment.

A



B

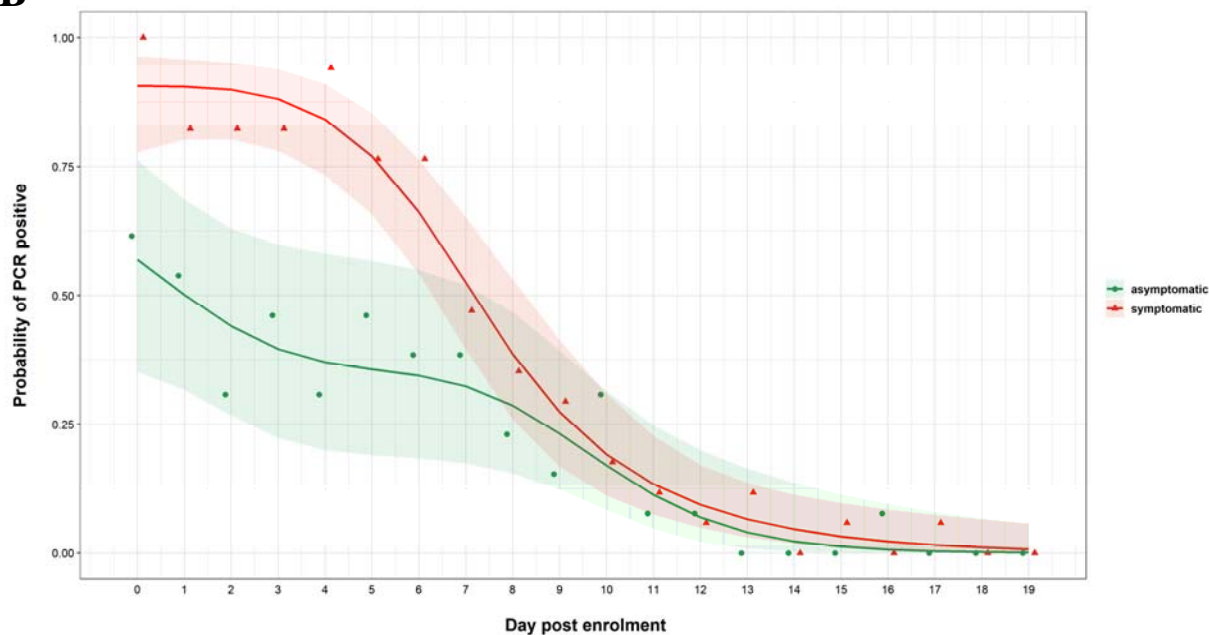


Figure 4: Trends in Ct values and viral detection probability in nasopharyngeal throat swabs over the course of hospitalization; (A) Changes of Ct values, relatively reflect the level of viral load, (B) Dynamics of viral detection probability from enrolment onward

Note to Figure 4: Each dot represents one observed value (A) or the mean value (i.e. frequency) per day (B), lines indicate mean and shades indicate 95% confidence interval.

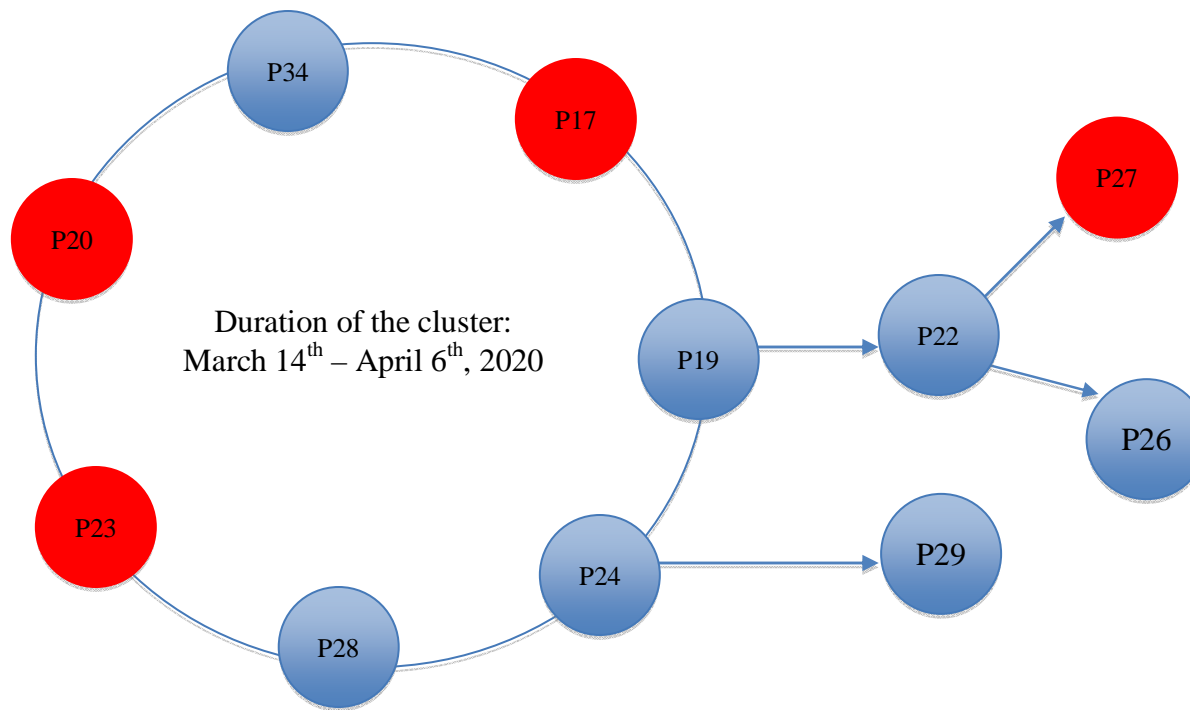
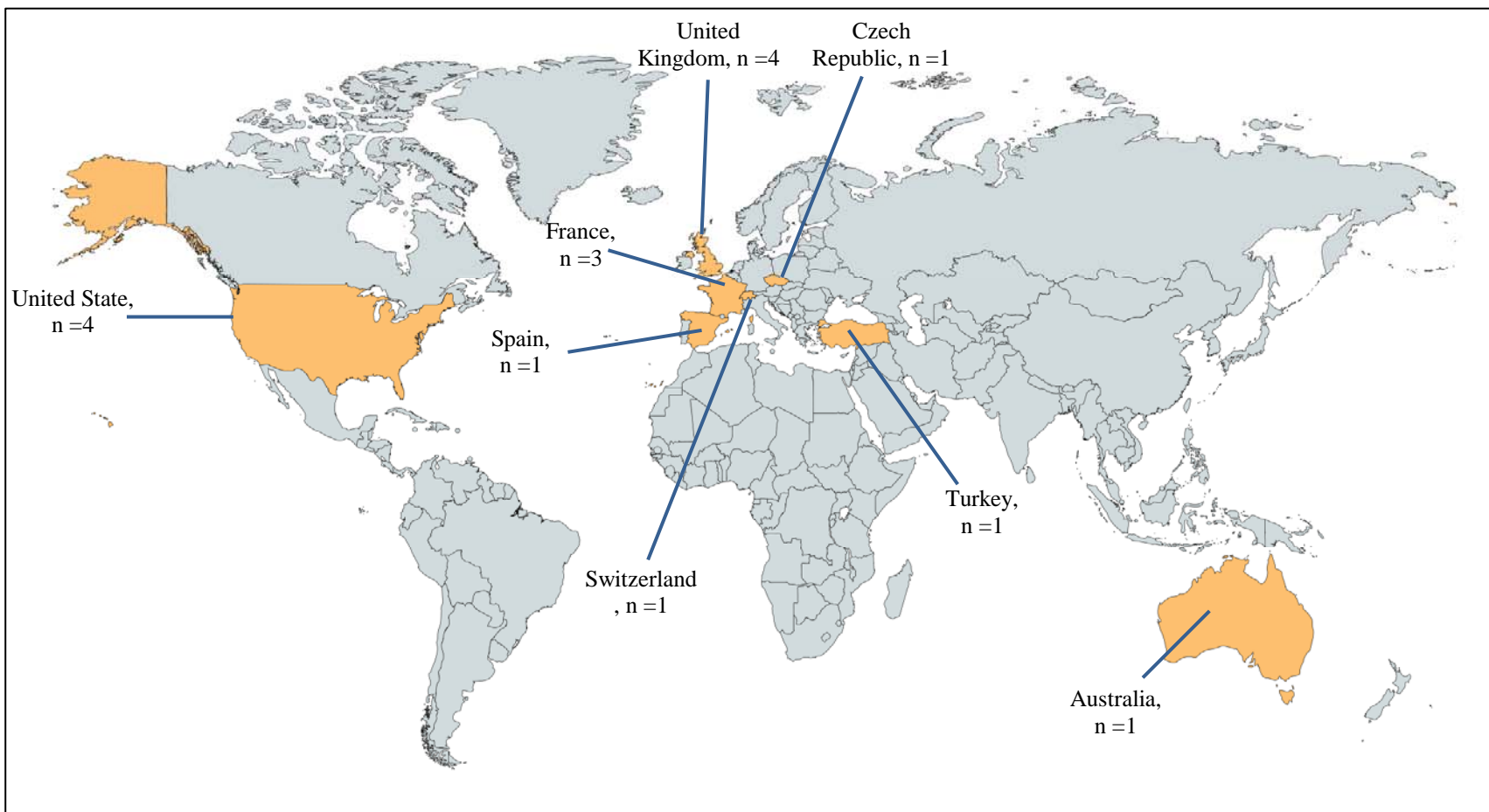


Figure 5: Illustration of cases with an epidemiological link with community transmission cluster #2.

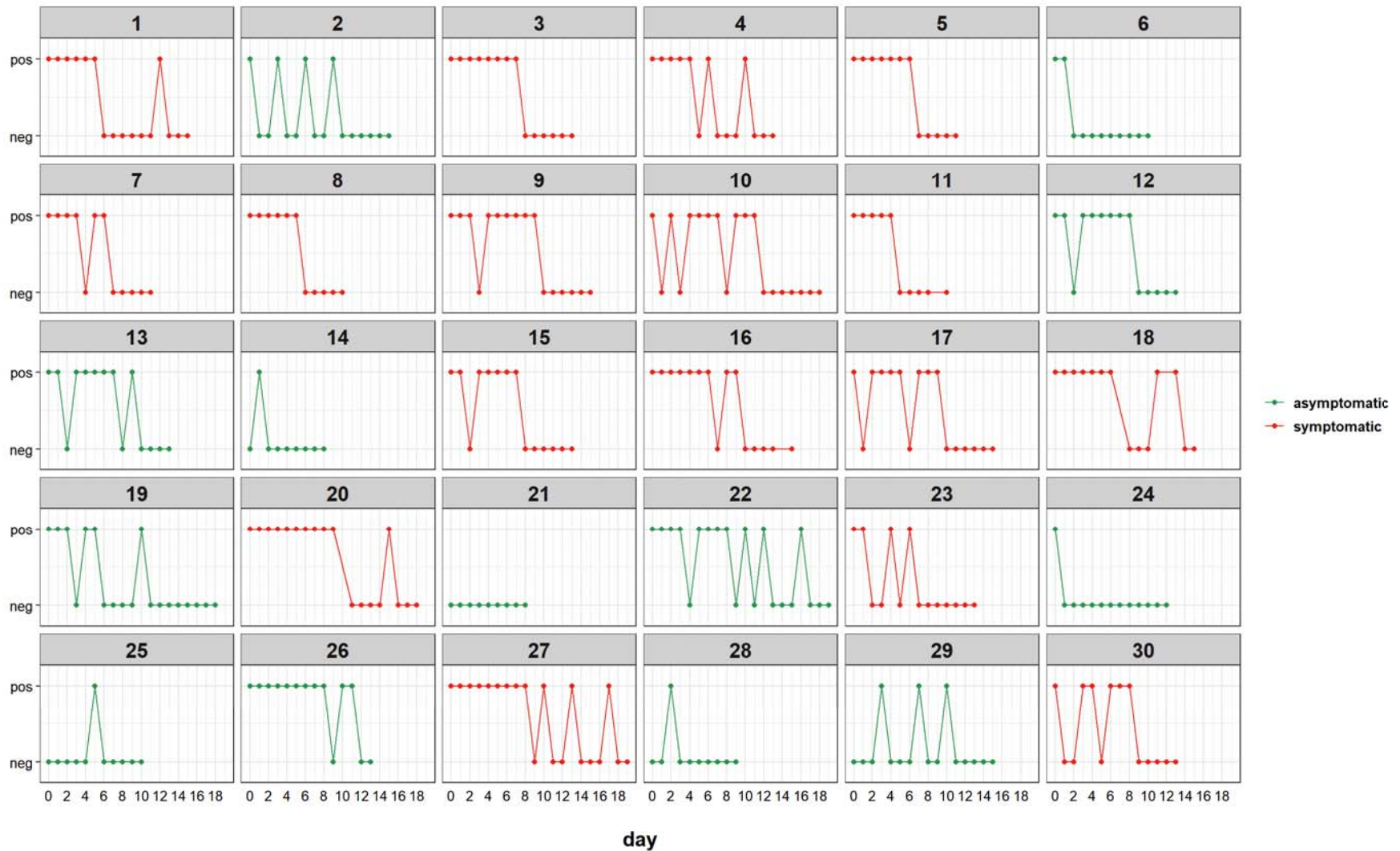
Figure 5: Red circles indicate symptomatic patients, and blue circles indicate asymptomatic cases. Patients sitting on the open circle are people of the cluster who first had contacts with each other on the same day. Patient numbers correspond to the numbers presented in Supplementary Figure 2.

SUPPLEMENTARY MATERIALS



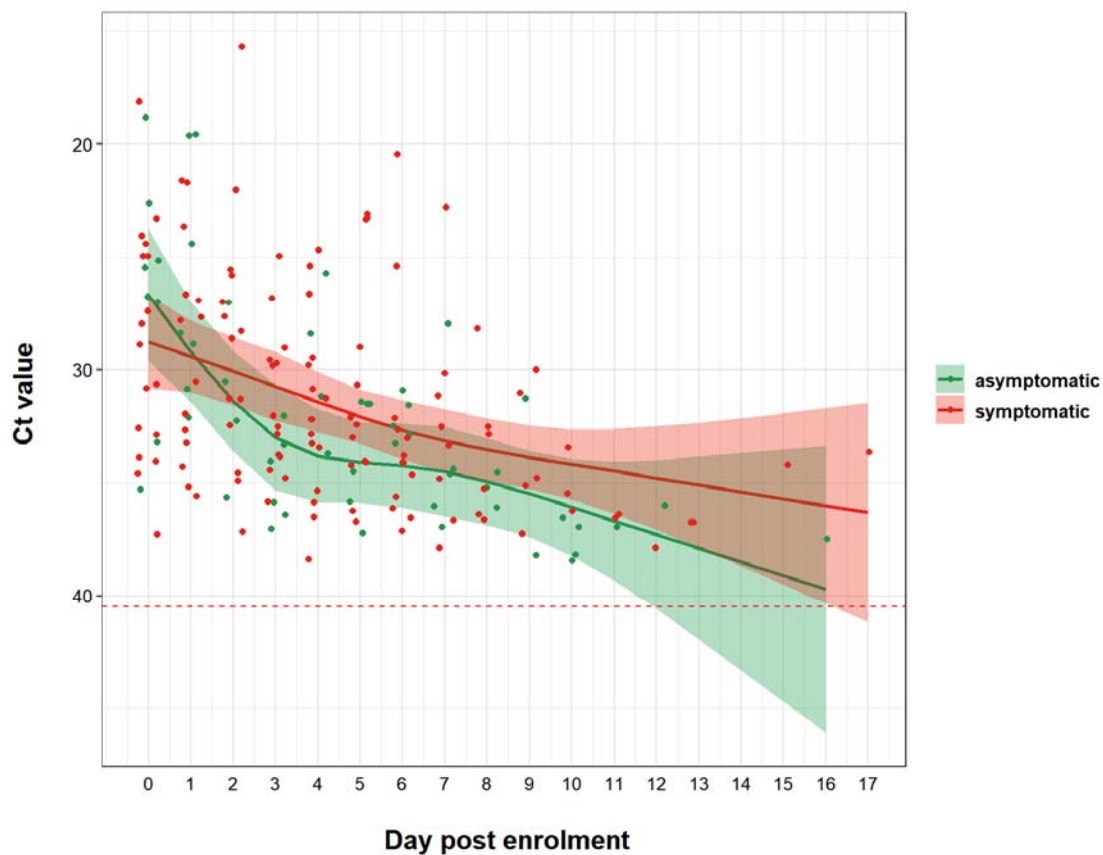
Supplementary Figure 1: Map showing countries where the imported cases stayed before travelling to Vietnam

Note to supplementary Figure 1: Maps were obtained from <https://mapchart.net/>



Supplementary Figure 2: Individuals data on Ct values of SARS-CoV-2 real-time RT-PCR obtained from analysis of nasopharyngeal throat swabs collected at enrollment and during follow-up

Note to Supplementary Figure 2: Horizontal dash lines indicate the assay cut off.



Supplementary Figure 3: Dynamics of Ct values during the course of quarantine or hospitalization in nasopharyngeal throat swabs of people who remained RT-PCR positive.