

1                   **Direct observation of repeated infections with endemic**

2   **coronaviruses**

3   Marta Galanti, Jeffrey Shaman

4  
5  
6                   Department of Environmental Health Sciences, Mailman School of Public Health,  
7   Columbia University, 722 West 168<sup>th</sup> Street, New York, NY 10032

8  
9  
10   **Corresponding author - contact information**

11   Dr. Marta Galanti  
12   Post-Doctoral Research Scientist,  
13   Department of Environmental Health Sciences  
14   Mailman School of Public Health  
15   722 West 168<sup>th</sup> St. NY, NY 10032  
16   Columbia University  
17   [mg3822@cumc.columbia.edu](mailto:mg3822@cumc.columbia.edu)

## 22 **Abstract**

23

24 Background

25

26 While the mechanisms of adaptive immunity to pandemic coronavirus SARS-CoV-2 are still  
27 unknown, the immune response to the widespread endemic coronaviruses HKU1, 229E, NL63  
28 and OC43 provide a useful reference for understanding repeat infection risk.

29

30 Methods

31

32 Here we used data from proactive sampling carried out in New York City from fall 2016 to  
33 spring 2018. We combined weekly nasal swab collection with self-reports of respiratory  
34 symptoms from 191 participants to investigate the profile of recurring infections with endemic  
35 coronaviruses.

36

37 Results

38

39 During the study, 12 individuals tested positive multiple times for the same coronavirus. We  
40 found no significant difference between the probability of testing positive at least once and the  
41 probability of a recurrence for the beta-coronaviruses HKU1 and OC43 at 34 weeks after  
42 enrollment/first infection. We also found no significant association between repeat infections and  
43 symptom severity but strong association between symptom severity and belonging to the same  
44 family.

45

46 Conclusion

47

48 This study provides evidence that re-infections with the same endemic coronavirus are not  
49 atypical in a time window shorter than 1 year and that the genetic basis of innate immune  
50 response may be a greater determinant of infection severity than immune memory acquired after  
51 a previous infection.

52

## 53 **Background**

54

55 The new coronavirus SARS-CoV-2 appears to have emerged in humans in the Hubei province of  
56 China during November 2019 [1]. Human to human transmission was confirmed in early  
57 January, and since then the virus has rapidly spread to all continents. The outbreak was declared  
58 a pandemic by the WHO on March 11th. As of April 10th, it had spread to over 180 countries  
59 with 1,521,252 confirmed cases and 92,798 deaths reported [2].

60

61 Symptoms associated with SARS-CoV-2 vary from none to extremely severe, with elder adults  
62 and people with underlying medical conditions more at risk for developing severe and potentially  
63 fatal disease [3]. At present, there is no vaccine or approved antiviral treatment for SARS-CoV-  
64 2, and therapies rely principally on symptom management. Many institutions across the world  
65 are working to develop a SARS-CoV-2 vaccine, and clinical trials with some vaccine candidates  
66 have already begun [4].

67

68 As the pandemic progresses, infecting millions of people across the world, a key question is  
69 whether individuals upon recovery are prone to repeat infection. A recent animal challenge study  
70 showed evidence of (at least) short-term protection against re-infections in rhesus macaques  
71 experimentally re-infected 4 weeks after first infection [5]. Typically, infections by different  
72 viruses trigger different adaptive immune responses: viruses like measles elicit life-long  
73 immunity; whereas others, like influenza, do not. Two main processes appear to be responsible  
74 for the short-lived immunity engendered against some pathogens: 1) waning of antibodies and  
75 memory cells in the host system; and 2) antigenic drift of the pathogen that enables escape from  
76 the immunity built against previous strains.

77

78 To contextualize the issue of protective immunity to SARS-CoV-2, we here present findings  
79 from a recent proactive sampling project carried out in New York City (NYC) that documented  
80 rates of infection and re-infection among individuals shedding seasonal CoV (types: HKU1,  
81 229E, NL63 and OC43). The results are discussed and analyzed in the broader context of  
82 coronavirus infections.

83

84

## 85 **Methods**

86

87 Data are derived from sampling performed between October 2016 and April 2018 as part of the  
88 Virome project, a proactive sampling of respiratory virus infection rates, associated symptom  
89 self-reports and rates of seeking clinical care. We enrolled 214 healthy individuals from multiple  
90 locations in the Manhattan borough of New York City. Cohort composition is described in [6]  
91 and includes: children attending two daycares, along with their siblings and parents; teenagers  
92 and teachers from a high school; adults working at two emergency departments (a pediatric and  
93 an adult hospital); and adults working at a university medical center. The cohort was obtained  
94 using convenience sampling, and all participants were younger than 65 years. While the study  
95 period spanned 19 months from October 2016 to April 2018, some individuals enrolled for a  
96 single cold and flu season (October – April) and others for the entire study period. Participants  
97 (or their guardians, if minors) provided informed consent after reading a detailed description of  
98 the study (CUMC IRB AAAQ4358).

99

100 Nasopharyngeal samples were collected by study coordinators once a week irrespective of  
101 participant symptoms. Samples were screened using the GenMark eSensor RVP system for 18  
102 different respiratory viruses, including coronavirus 229E, NL63, OC43, and HKU1. Sample  
103 collection and extraction followed the same protocol as in [7].

104

105 In addition, participants completed daily self-reports rating nine respiratory illness-related  
106 symptoms (fever, chills, muscle pain, watery eyes, runny nose, sneezing, sore throat, cough,

107 chest pain), each of which was recorded on a Likert scale (0=none, 1=mild, 2=moderate,  
108 3=severe), see [6] for further survey details.

109  
110 For this analysis, only the 191 participants who contributed at least six separate pairs of  
111 nasopharyngeal samples in the same season were included. We defined an infection (or viral)  
112 episode as a group of consecutive weekly specimens from a given individual that were positive  
113 for the same virus (allowing for a one-week gap to account for false negatives and temporary low  
114 shedding). We classified all infection episodes as symptomatic or asymptomatic according to  
115 individual symptom scores in the days surrounding the date of the first positive swab of an  
116 episode. We used multiple definitions as a standard for symptomatic infection does not exist  
117 (Table 1). These symptom definitions are described in reference to a -3 to +7-day window  
118 around the date of the initial positive swab for each infection episode. The daily symptom score  
119 is defined as the sum of the 9 individual symptoms (range: 0-27) on a given day. Total symptom  
120 score is the daily symptom score summed over the -3 to +7-day window.

121  
122 We used Survival Analysis methods to estimate the probability of infection (as a function of time  
123 from enrollment) and the waning of protective immunity following first infection for each type  
124 of coronavirus. Specifically, we used the Kaplan Meier estimator  $S(t)$  to estimate 1) the  
125 probability of being infected with each coronavirus type and 2) the probability of being re-  
126 infected with the same coronavirus type following a previous documented infection.  $I(t)$   
127 measures the probability of having tested positive for a given coronavirus type by time  $t$ :

128

$$I(t) = 1 - S(t) = 1 - \prod_{t_i < t} \left(1 - \frac{d_i}{n_i}\right)$$

129 Time  $t$  is measured in weeks from enrollment in the first analysis and from the previous  
130 documented infection with a specific coronavirus type in the second analysis;  $d_i$  are the  
131 participants testing positive  $i$  weeks after enrollment (after first infection) and  $n_i$  are the  
132 participants that are still enrolled  $i$  weeks after enrollment (after first infection). The denominator  
133  $n_i$  corrects for participants withdrawing from the study at different time by right censoring.

134

135 The estimators for the probability of infection and reinfection are compared statistically using the  
136 log rank test. We used Fisher's exact test to analyze the difference between symptoms developed  
137 during subsequent infections and ANOVA comparison to test differences in symptom scores  
138 reported by different family clusters. We restricted the last analysis to the family clusters within  
139 the cohort that presented at least 3 coronavirus infections during the study.

140

## 141 **Results**

142

143 Among all participants enrolled, 86 individuals tested positives at least once during the study for  
144 any coronavirus infection. 48 individuals tested positive at least once for OC43, 31 tested  
145 positive for 229E, 15 tested positive for NL63 and 28 tested positive for HKU1. Figure 1 shows  
146 a Kaplan-Meier plot estimating the probability of becoming infected with each coronavirus  
147 within  $x$  weeks following enrollment (see Supplementary Table S1 for the number of individuals  
148 infected and censored at each time point). OC43 was the most widely diffused virus: the  
149 probability of testing positive following 80 weeks in the study was 0.47. In contrast, NL63 was  
150 the least frequently isolated coronavirus type: the probability of testing positive after 80 weeks  
151 was 0.17. Among the study participants, 12 individuals tested positive multiple times during the

152 study for the same coronavirus: 9 tested positive multiple times for OC43, 2 tested positive twice  
153 for HKU1, 1 tested positive twice for 229E and nobody tested positive multiple times for NL63.  
154 Among the 9 participants with multiple OC43 infections, 3 individuals experienced 3 separate  
155 infection episodes, and the other 6 experienced 2 separate episodes. The median time between  
156 reinfection events was 37 weeks. The shortest time for a reoccurrence of infection was 4 weeks  
157 (OC43), the longest was 48 weeks (OC43). Among the 12 individuals testing positive multiple  
158 times for the same coronavirus, 9 were children aged between 1 and 9 years at enrollment, and 3  
159 were adults aged between 25 and 34 years (see Supplementary Table S2 for characteristics of the  
160 repeated infections).

161  
162 Figure 2 shows a Kaplan-Meier plot estimating the probability of becoming re-infected with the  
163 same beta-coronavirus (OC43 and HKU1) within  $x$  weeks after a previously documented  
164 infection (see Supplementary Table S3 for the number of individuals infected and censored at  
165 each time point). A comparison between the data shown in Fig 2 and Fig 1 finds no significant  
166 differences between the probability of testing positive at least once and the probability of a  
167 recurrence for both HKU1 and OC43 at 34 weeks after enrollment/first infection.

168  
169 To control for false positive PCR results, we tested the sensitivity of the findings to different  
170 choices of the positivity threshold used in RVP testing (see Supplementary Text 1 and  
171 Supplementary Figures S1 to S 4). The probability of reinfection with beta-coronaviruses at  $> 38$   
172 weeks after prior infection was robust across different thresholds, whereas short terms  
173 reinfection signals could be an artifact due to PCR amplification. This shifted threshold also



174 yields a statistically significant difference between the probability of testing positive at least once  
175 and the probability of a recurrence after first infection until week 43 ( $p = 0.04$ ).

176  
177 There was no significant difference in the likelihood of experiencing symptomatic infection  
178 between the first and subsequent infection episodes by any of the 5 definitions provided in Table  
179 1. In particular, all the individuals who were completely asymptomatic during the first recorded  
180 occurrence, did not report any symptoms during subsequent infection(s) with the same  
181 coronavirus type. However, there was a significant association between severity of symptoms  
182 associated with any coronavirus infection and belonging to the same family cluster ( $p < .0001$ ,  
183 one-way analysis of variance). Figure 3 shows the total symptom score associated with any  
184 coronavirus infection for infections grouped by family cluster.

185

## 186 **Discussion**

187

188 As the SARS-CoV-2 pandemic spreads to millions of individuals worldwide, it is extremely  
189 important to understand the mechanisms of protective immunity elicited by infection. Until  
190 direct observations of adaptive immune response to SARS-CoV-2 become available, analyses of  
191 protective immunity elicited by other coronaviruses may offer useful insights.

192 Several studies in the last four decades have shown that infections with the 4 endemic  
193 coronaviruses 229E, OC43, NL63 and HKU are common in the general population [8] [9].  
194 Infection with these viruses generally produces mild and even asymptomatic infection [10].  
195 Serological studies have shown that more than 90% of the population presents a baseline level of  
196 antibodies against these endemic coronaviruses, with first seroconversion occurring at a young

197 age [11] [8]. Shortly after infection, baseline antibody titers increase sharply; this response has  
198 been demonstrated for both natural and experimentally-induced infections [12] [13] [9].

199 Antibody titers start increasing roughly one week following infection, reach a peak after about 2  
200 weeks [13], and by 4 months to 1 year have returned to baseline levels [13] [9]. A challenge  
201 study [13] showed that the likelihood of developing an infection after inoculation correlated with  
202 participants' concentration of antibodies at enrollment. Moreover, a positive correlation has been  
203 shown between antibody rise after infection, severity of clinical manifestation and viral shedding  
204 [12], with milder cases linked to less substantial post-infection antibody rises.

205 Instances of natural re-infections with the same virus type have been documented previously [9]  
206 in which repeated infections with OC43 and 229E were recorded by serological testing.

207 Subsequent infections were separated by at least 8 months, though study participants were tested  
208 every 4 months. Participants in a separate challenge study were inoculated with coronavirus  
209 229E and then re-challenged with the same virus after one year [13]. In most cases, re-infection  
210 occurred, though it presented with decreased symptoms severity and shortened duration of  
211 shedding.

212  
213 The adaptive immune response to coronavirus is mainly directed towards the most variable part  
214 of the virus, a region that is not conserved across types; consequently, cross-reactive protection  
215 between different types does not appear to be an important factor [14, 15]. In addition, the effects  
216 of antigenic drift on re-infection have not been elucidated [16] and more studies are warranted to  
217 understand whether repeat infections are ascribable to rapid virus evolution rather than a decline  
218 in antibody titers.

219

220 The mild pathogenicity of seasonal coronavirus infection (with immune response often restricted  
221 to the upper respiratory tract) is also often regarded as the reason for short-lived immunity.  
222 Coronavirus infections, and the adaptive immunity acquired towards them, have also been  
223 studied in animals. In a study on porcine respiratory coronavirus (PRCV), which causes  
224 subclinical infections in pigs, antibody titers waned approximately one year after experimental  
225 infection [17]. In contrast, an experimental study on murine coronavirus (MHV), which produces  
226 severe, systemic infections in mice, has shown an interplay between virus-specific antibodies and  
227 T cells, that upon survival in the host lead to life-long protection against reinfection [18].  
228 Similarly, a longer immunity profile has been hypothesized for SARS and MERS due to their  
229 increased severity and to the systemic response that infection induces [14]. Specific antibodies  
230 were detectable for at least 2 years in SARS and MERS survivors [19] [20]. Although  
231 longitudinal studies on SARS survivors have not detected specific SARS IGG antibody  
232 persistence 5 years after infection, they have found that specific memory T cells persist in the  
233 peripheral blood of recovered SARS patients, and at higher levels in patients who experienced  
234 severe disease [21]. Whether the presence of these memory T cells would be enough to induce a  
235 fast, protective response upon reinfection with SARS has not been assessed.

236 Our study confirms that seasonal coronaviruses are widespread in the general population with  
237 infections directly documented for a large fraction of the participants in our study. The methods  
238 for our analysis are based on the hypothesis that infection probabilities are comparable among  
239 participants enrolled at different times in the study. However, the seasonality of endemic  
240 coronaviruses, which are mostly absent during the summer months, and the relative magnitude

241 across years of seasonal coronavirus epidemics are limitations. In US the prevalence of OC43  
242 during the 2016-17 season was much higher than during the 2017-18 season, whereas the  
243 opposite trend was observed for HKU1 [22]. Moreover, our estimates of infection and re-  
244 infection probabilities must be considered as a lower bound, due to the occurrence of weekly  
245 swabs missed by the participants and due to the design of the study itself, which may have  
246 missed infections of short duration in between consecutive weekly tests. Nevertheless, this study  
247 confirms that re-infections with the same coronavirus type occur in a time window shorter than 1  
248 year, and finds no significant association between repeat infections and symptom severity.  
249 Instead, it provides evidence of possible genetic determinants of innate immune response, as  
250 individuals asymptomatic during first infection did not experience symptoms during subsequent  
251 infections, and members of the same families reported similar symptom severity. We recognize  
252 that the self-reporting of symptoms is an important limitation in this analysis and that parents  
253 reported symptoms for their dependents, which possibly introduced bias. Moreover, the majority  
254 of the repeated coronavirus infections were found in children, a cohort more vulnerable to  
255 infection because of their immature immune system [23], and 26% of the episodes in the  
256 repeated infections were co-infections with other respiratory viruses (see Supplementary Table  
257 S2). Another potential limitation of our study is the high sensitivity of PCR tests, that can  
258 amplify very small amounts of genetic material, possibly not ascribable to active infections.  
259 However, the occurrence of repeated infections separated by at least 38 weeks, was corroborated  
260 by repeating the analysis with different positivity thresholds for the RVP.

261  
262 More studies analyzing the genetic basis of individual response to coronavirus infections are  
263 warranted. Even though the endemic coronaviruses are very rarely associated with severe

264 disease, their widespread diffusion together with the fact that OC43 and HKU1 belong to the  
265 same beta-coronavirus genus as SARS-CoV2 offer important opportunities for investigation.

266

267

268

269

270

271

272

273

274

275

276

277

278

279

280

281

282

283

284

285

286

287 **Financial support**

288 This work was supported by the Defense Advanced Research Projects Agency contract  
289 W911NF-16-2-0035. The funders had no role in study design, data collection and analysis,  
290 decision to publish, or preparation of the manuscript.

291

292 **Conflict of interests**

293 JS and Columbia University disclose partial ownership of SK Analytics. JS also discloses  
294 consulting for BNI. All other authors declare no competing interests.

295

296 **Corresponding author - contact information**

297 Dr. Marta Galanti  
298 Post-Doctoral Research Scientist,  
299 Department of Environmental Health Sciences  
300 Mailman School of Public Health  
301 722 West 168<sup>th</sup> St. NY, NY 10032  
302 Columbia University  
303 [mg3822@cumc.columbia.edu](mailto:mg3822@cumc.columbia.edu)

304

305

306 **References**

307

- [1] Andersen KG, Rambaut A, Lipkin WI, Holmes EC, Garry RF, "The proximal origin of SARS-CoV-2," *Nature Medicine*, **2020**.
- [2] WHO, "Situation Report," **2020**. [Online]. Available: [https://www.who.int/docs/default-source/coronaviruse/situation-reports/20200401-sitrep-72-covid-19.pdf?sfvrsn=3dd8971b\\_2](https://www.who.int/docs/default-source/coronaviruse/situation-reports/20200401-sitrep-72-covid-19.pdf?sfvrsn=3dd8971b_2).
- [3] CDC, **2020**. [Online]. Available: <https://www.cdc.gov/coronavirus/2019-ncov/symptoms-testing/symptoms.html>.
- [4] NIH, "<https://www.nih.gov/news-events/news-releases/nih-clinical-trial-investigational-vaccine-covid-19-begins>," **2020**. [Online].
- [5] Bao L, Deng W, Gao H et al., "Reinfection could not occur in SARS-CoV-2 infected rhesus macaques," *bioarxiv, preprint*, **2020**.
- [6] Galanti M, Birger R, Ud-Dean M et al, "Longitudinal active sampling for respiratory viral infections across age groups.," *Influenza and Other Respiratory Viruses*, **2019**;133: 226-232.
- [7] Shaman J, Morita H, Birger R et al. "Asymptomatic summertime shedding of respiratory viruses.," *Journal of Infectious Diseases*, **2018**; 217: 1074-1077.

- [8] Zhou W, Wang W, Wang H, Lu R, Tan W, "First infection by all four non-severe acute respiratory syndrome human coronaviruses takes place during childhood," *BMC Infect Dis.*, **2013**; 13: 433.
- [9] Schmidt OW, Allan ID, Cooney MK, Foy HM, Fox JP., "Rises in titers of antibody to human coronaviruses OC43 and 229E in Seattle families during 1975-1979," *American Journal of Epidemiology*, **1986**; 123(5): 862-8.
- [10] Galanti M, Birger R, Ud-Dean M et al, "Rates of asymptomatic respiratory virus infection across age groups," *Epidemiology and Infection*, **2019**; 147: e176.
- [11] Severance EG, Bossis I, Dickerson FB et al, "Development of a nucleocapsid-based human coronavirus immunoassay and estimates of individuals exposed to coronavirus in a U.S. metropolitan population.," *Clin Vaccine Immunol.*, **2008**; 15(12): 1805-10.
- [12] Kraaijeveld CA, Reed SE, Macnaughton MR, "Enzyme-Linked Immunosorbent Assay for Detection of Antibody in Volunteers Experimentally Infected with Human Coronavirus Strain 229E," *J Clin Microbiol.*, **1980**; 12( 4): 493-7.
- [13] Callow KA, Parry HF, Sergeant M, and Tyrrell DA, "The course or immune response to experimental coronavirus infection of man," *Epidemiol Infect.*, **1990**; 105(2): 435–446.
- [14] Perlman S, Vijay R, "Middle East respiratory syndrome vaccines," *Int J Infect Dis.*, **2016**; 47: 23-8.
- [15] Macnaughton MR, Hasony HJ, Madge MH, Reed SE, "Antibody to virus components in volunteers experimentally infected with human coronavirus 229E group viruses.," *Infect Immun.*, **1981**; 31(3): 845-9.



[16] Monto AS, Cowling BJ, Peiris JSM, Coronaviruses. In: Kaslow R., Stanberry L., Le Duc J. (eds) *Viral Infections of Humans*, Boston, MA: Springer, 2014.

308

[17] Wesley R, "Neutralizing antibody decay and lack of contact transmission after inoculation of 3- and 4-day-old piglets with porcine respiratory coronavirus," *J Vet Diagn Invest* , , **2002**; 14,: 525–527.

[18] Williamson JS, Stohlman SA., "Effective clearance of mouse hepatitis virus from the central nervous system requires both CD4+ and CD8+ T cells.," *Journal of virology*, , **1990**; 64(9): 4589-92.

[19] Mo H, Zeng G, Ren X et al., "Longitudinal profile of antibodies against SARS-coronavirus in SARS patients and their clinical significance," *Respirology*, 2006; 11(1): 49-53.

[20] Payne DC, Ibrahim I, Rha B et al., "Persistence of Antibodies against Middle East Respiratory Syndrome Coronavirus," *Emerg Inf Dis*, **2016**; 22(10): 1824–1826.

[21] Tang F, Quan Y, Xin ZT et al, "Lack of Peripheral Memory B Cell Responses in Recovered Patients with Severe Acute Respiratory Syndrome: A Six-Year Follow-Up Study", *J. Immunol.*, **2011**; 186(12): 7264-8.

[22] CDC, "NERVSS," **2019**. [Online]. Available:  
<https://www.cdc.gov/surveillance/nrevss/coronavirus/index.html>

[23] Simon AK, Hollander GA, and McMichael, "Evolution of the immune system in humans from infancy to old age," *Proc Biol Sci.*, **2015**, 282: 20143085 .

309

310

311

312 **Table 1.** Definitions of symptomatic infections. All symptom definitions are described in  
313 reference to a -3/+7 days window around the date of the initial positive swab for an infection  
314 episode. Note, Definition 4 is relative to an individual's long-term average total symptom score.  
315

---

Definition 1 At least one day with a daily score  $>3$

---

Definition 2 Minimum two individual symptoms  $>0$  and at least one symptom  $>1$

---

Definition 3 Total symptom score  $>9$

---

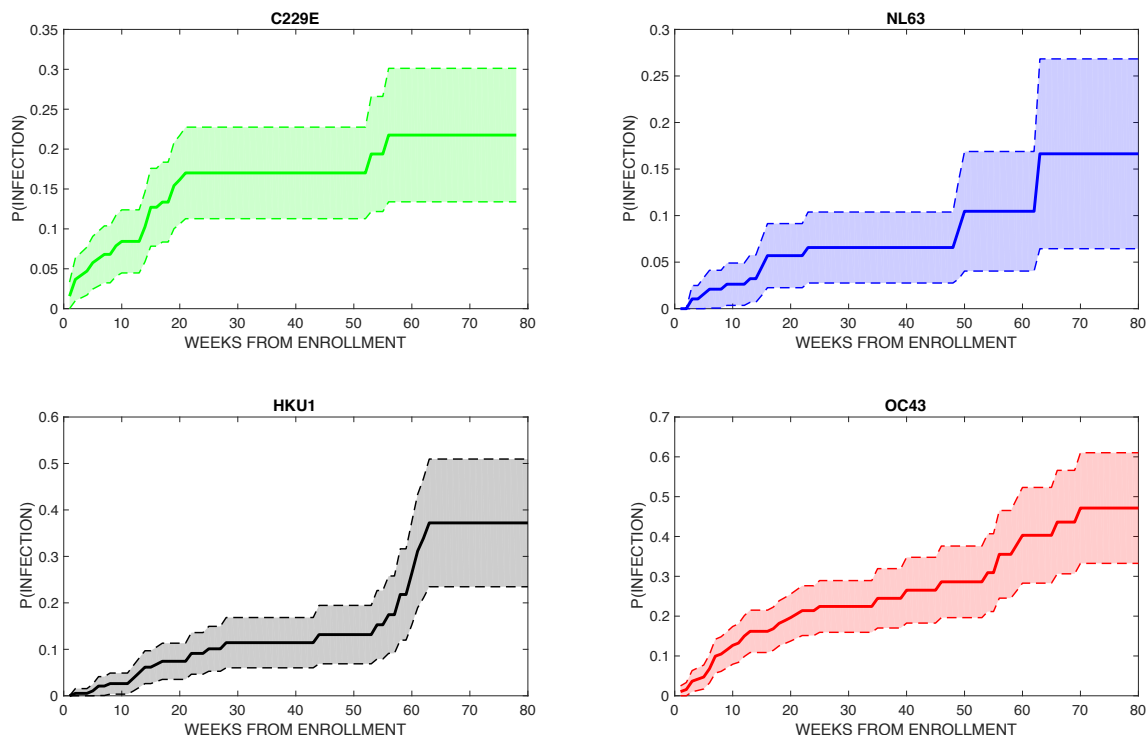
Definition 4 Total symptom score greater than twice the weekly average for the infected individual

---

Definition 5 Total symptom score  $>0$  (i.e. any reported symptom)

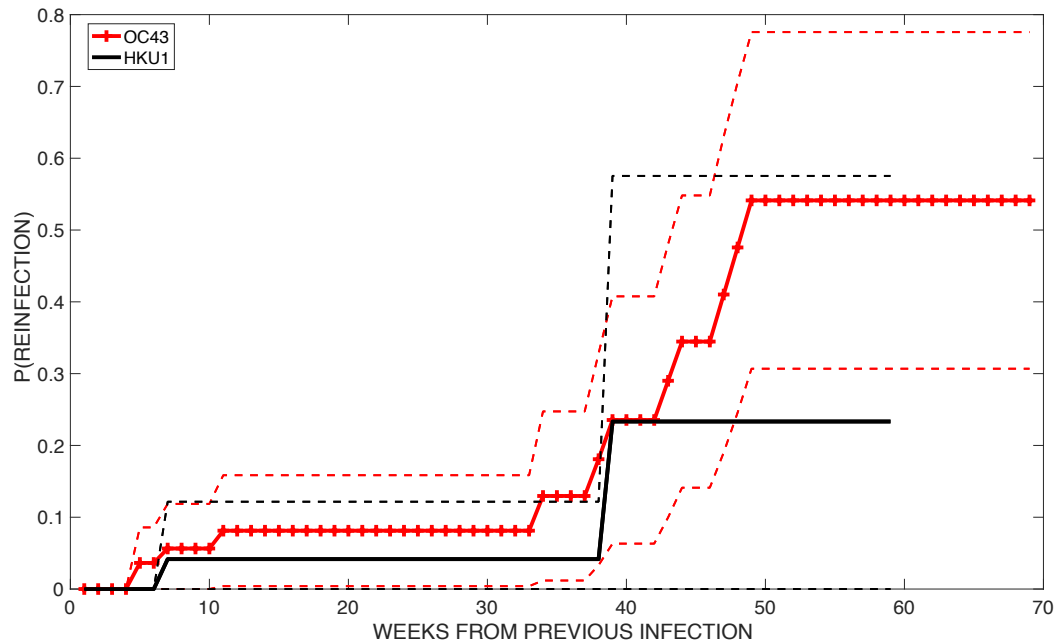
---

316  
317 **Figure 1:** Kaplan- Meier plots showing the probability of testing positive within  $x$  weeks after  
318 enrollment for each of the 4 types of seasonal coronavirus. The shaded area is the 95% CI.



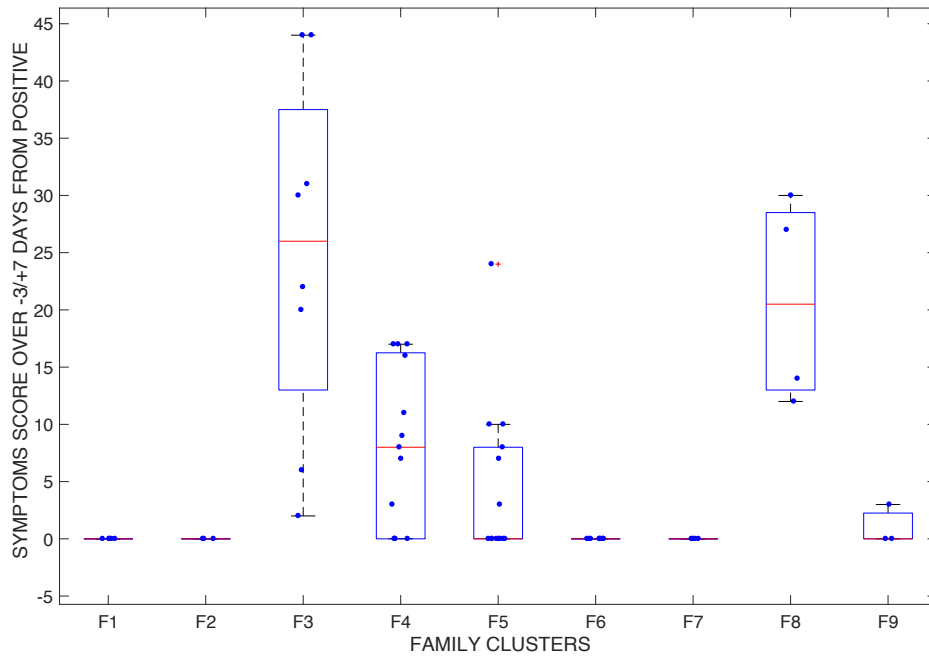
319

320 **Figure 2:** Probability of becoming re-infected with the same beta-coronavirus type (OC43 in red  
321 crossed line and HKU1 in black straight line) within x weeks after a first documented infection.  
322 Dashed lines show the 95% CI.



323  
324 **Figure 3:** Total symptom score associated with infections by any coronavirus type. Each point  
325 represents an infection event, and each cluster represents a family group. Each family group F1

326 to F9 is composed of a parent and 1 to 4 children.



327