

Gender-Based Disparities in COVID-19 Patient Outcomes: A Propensity-matched Analysis.

Shailendra Singh, Monica Chowdhry, Arka Chatterjee, Ahmad Khan

Authors

Shailendra Singh M.D

1. Division of Gastroenterology, West Virginia University Health Sciences Center Charleston Division, Charleston, WV.
2. Charleston Area Medical Center Health System, Charleston, WV.

Monica Chowdhry M.D

Department of Medicine, West Virginia University Health Sciences Center Charleston Division, Charleston, WV.

Arka Chatterjee M.D

Division of Cardiovascular Disease, University of Alabama at Birmingham.

Ahmad Khan M.D

Department of Medicine, West Virginia University Health Sciences Center Charleston Division, Charleston, WV.

Acknowledgment

We acknowledge the West Virginia Clinical and Translational Science Institute to provide us access, and training to the TriNETX global healthcare network.

We also acknowledge the TriNETX (Cambridge, MA, USA) healthcare network for design assistance to complete this project.

The authors received no financial support or grants for the research, authorship, and publication of this article.

Shailendra Singh, Monica Chowdhry, Arka Chatterjee, and Ahmad Khan declare that they have no conflict of interest.

Corresponding Author

Shailendra Singh M.D

Charleston Area Medical Center Health System, Charleston, WV

Email: Shail121@gmail.com

Phone no: 304-342-0821

Fax: 304-345-6679

Key Points

Question: Is the gender disparity in the COVID-19 mortality due to differences in high-risk characteristics between males and females?

Findings: Our study, including a large cohort of male and female patients, showed that males have a higher risk for mortality, hospitalization and mechanical ventilation even when compared to a matched cohort of females with similar age, high-risk behavior, and comorbidities. This gender-based risk of poor outcomes among COVID-19 patients is especially more pronounced in advanced age.

Meaning: High-risk characteristics only partially explain the gender disparity, and further research is needed to understand the causes of this disparity.

Abstract

Importance

COVID-19 epidemiological data show higher mortality among males as compared to females. However, it remains unclear if this disparity is due to gender differences in high-risk characteristics.

Objective

To study the clinical characteristics of a large and diverse cohort of COVID-19 patients stratified by gender and determine outcomes after matching for age and other high-risk characteristics.

Design

Retrospective cohort between January 20, 2020, and April 15, 2020

Setting

Population-based study using TriNetX COVID-19 Research Network which comprises of multiple healthcare organizations (HCOs) predominantly in the United States

Participants and Exposure

A cohort of male and female patients ≥ 10 years of age diagnosed with COVID-19 identified with real-time analyses of electronic medical records of patients from participating HCOs. A 1:1 propensity score matching of cohorts was performed for age, race, nicotine use, and an exhaustive list of confounding comorbidities.

Main Outcome

Mortality, hospitalization and mechanical ventilation within 30 days after the diagnosis of COVID-19

Results

A total of 5980 males and 7730 females diagnosed with COVID-19 were identified. Males were significantly older than females (54.9 ± 18.3 vs. 50.9 ± 18.4 , p -value <0.0001). There were significant differences in patient characteristics, but after propensity matching, both groups ($N=5350$ each group) were balanced. Males had a significantly higher risk for mortality both before (Risk Ratio (RR) 2.1, 95% CI 1.8-2.4) and after matching (RR 1.4, 95% CI 1.2-1.7). Similarly, the risk of hospitalization (RR 1.3, 95%CI 1.2-1.4) and mechanical ventilation (RR 1.71, 95% CI 1.3-2.3) was significantly higher in males even after matching. On subanalysis, males age ≥ 50 had even higher risk mortality than matched females of similar age (RR 1.6, 95% CI 1.4-1.8).

Conclusion

In conclusion, males are more severely affected and have higher mortality from COVID-19. This gender-specific risk is especially more pronounced in advanced age. Gender disparity in outcomes can only be partially explained by differences in high-risk behavior and comorbidities. Further research is needed to understand the causes of this disparity.

Introduction

Coronavirus disease 2019 (COVID-19) has emerged as unprecedented global health, economic, and social crisis. More than 2 million COVID-19 cases and 160,00 deaths have been reported worldwide as of April 20, 2020^{1,2}. Epidemiological data reported across multiple countries show markedly higher mortality for males compared to females^{3,4}. It needs to be determined if the gender disparity in the COVID-19 mortality is true or just an interaction of gender differences in risk characteristics⁵. Therefore, we studied the clinical characteristics of a large and diverse cohort of COVID-19 patients stratified by gender and determined the outcomes after extensive propensity matching for risk factors and comorbidities.

Methods

The study was conducted using TriNetX (Cambridge, MA, USA), a global federated health research network providing real-time access to electronic medical records (EMR) of more than 49 million patients from 37 healthcare organizations (HCOs) predominantly in the United States. COVID-19 Research Network was recently created, data inflow fast-tracked with COVID-19 specific diagnosis and terminology following the WHO and CDC COVID-19 guidelines⁶⁻⁸. As a federated network, TriNetX received a waiver from Western IRB since only aggregated counts, statistical summaries of de-identified information, but no protected health information is received, and no study-specific activities are performed in retrospective analyses. Further details available in Supplementary Methods.

A search query was made (April 17-18, 2020) in the EMR of patients on the COVID-19 research network to identify male and female patients (\geq 10 years age) diagnosed with COVID-19 between January 20, 2020, and April 15, 2020. The primary outcome was risk of mortality, mechanical ventilation, and hospitalization within 30 days after the diagnosis of COVID-19.

All statistical analyses were performed in real-time using TriNetX. TriNetX obfuscates patient counts to safeguard protected health information (PHI) by rounding patient counts in analyses up to the nearest 10. A 1:1 propensity score matching was performed using a greedy nearest-neighbor matching algorithm. For each outcome, the risk difference and risk ratio were calculated. We also performed Kaplan-Meier survival analyses to estimate the survival probability of each outcome at the end 30 days after the diagnosis of COVID-19. A-priori defined two-sided alpha of less than <0.05 was used for statistical significance.

Detailed search criteria, the definition of variables, and statistical analysis are available in Supplementary Methods.

Results:

We identified a total of 5980 males and 7730 females diagnosed with COVID-19 from 20 HCOs. Of these, 45% of males and 50% of females were from the United States. Males were older than the females (54.9 ± 18.3 vs. 50.9 ± 18.4 , p -value <0.0001). There were significant differences in patient demographics, risk behaviors, and comorbidities among male and female patients with COVID-19 (Table 1). Age, race, high-risk behavior including nicotine, and all comorbidities (mentioned in Table 1), including diabetes, hypertension, chronic lung disease, cardiovascular disease, chronic kidney disease, among others, were selected for propensity matching. The groups ($N=5350$ each group) were well balanced after matching (Supplementary Figure 1). Presenting signs and symptoms and most recent laboratory findings after COVID-19 are also compared in Table 1. Mean values of serum creatinine, liver function tests, and inflammatory markers such as Ferritin, CRP, and IL-6 were all significantly higher in males. 4089 (68.4%) male and 6117 (79.1%) female patients did not receive COVID-19 specific medications. Azithromycin and hydroxychloroquine alone or in combination were the most common COVID-19 specific medications for both groups (Supplementary Figure 2).

Males had a significantly higher risk for mortality before (Risk Ratio (RR) 2.1, 95% CI 1.8-2.4) and after matching (RR 1.4, 95% CI 1.2-1.7) (Table 2). Similarly, the risk of hospitalization (RR 1.3, 95%CI 1.2-1.4) and mechanical ventilation (RR 1.71, 95% CI 1.3-2.3) was significantly higher in males (Table 2) even after matching of cohorts. Kaplan-Meier survival curves showed significantly different survival probability for all outcomes after diagnosis of COVID-19 in matched male and female cohorts (Figure 1). A sub-analysis of the cohorts based on age was also performed. Patients (≥ 50 years (mean age of cohort) were considered as advanced age, and 93.9% of overall mortality was in patients ≥ 50 years. Males with advanced age had higher mortality than matched females of similar age group (RR 1.6, 95% CI 1.4-1.8) (Table 2).

Discussion:

Our study, including a large cohort of male and female COVID 19 patients, showed that the overall risk for mortality, hospitalization, and mechanical ventilation was significantly higher for males as compared to females. We meticulously compared the characteristics of male and female patients with COVID-19 and found a higher rate of high-risk behaviors and comorbidities in male patients. Even after propensity score matching of the cohorts for age, race, nicotine use, diabetes, hypertension, chronic lung diseases, cardiovascular diseases, chronic kidney disease, and many other comorbidities/risk behaviors, gender disparity in outcomes persist.

The vast majority of the deaths in COVID-19 occurred in patients with advanced age (≥ 50 years), and the gender-dependent risk of poor outcomes after COVID-19 was more pronounced with advancing age. The risk of mortality in patients with advanced age was higher compared to a matched group of females of similar age. In younger patients, the overall mortality is low, and therefore mortality differences might not be

apparent. We observed higher levels of serum creatinine, liver function tests, and inflammatory markers like ferritin, CRP, and IL-6 in males, likely suggesting more severe disease.

COVID-19 gender differences in mortality are similar to the 2002–2003 SARS-CoV epidemic and the later MERS-CoV outbreak^{9,10}. Multiple factors likely contribute to the disparity in gender-specific outcomes. Age and high-risk comorbid conditions could only partially explain the stark differences reported with unadjusted data. The higher smoking rate in men is speculated as a possible reason¹¹, we matched our cohorts for both past and current nicotine use and still found significant differences in outcome. Moreover, the difference in rates of smoking is unlikely to explain the magnitude of gender disparity seen in outcomes. Although gender-specific variations in angiotensin-converting enzyme 2 (ACE2) receptor expression have been suggested (preprint)¹², this needs further confirmation. Immune-defense factors likely have a substantial role. Males and females respond differently to many virus infections, and generally, females mount a more robust protective immune response^{13,14}. Differences in the production of sex-specific hormones, immune response X-linked genes, and the disease-susceptibility genes among males and females likely impact the immune response and disease severity^{13,14}. Besides biological factors, many social, behavioral, and cultural differences might also have a role.

Although our data represent one of the largest and most diverse cohorts of COVID-19 patients, our study has several limitations. The data derived from EMR based database is susceptible to errors in coding or data entry¹⁵. However, the ability of TriNetX to aggregate the data directly from the EMRs in a real-time fashion minimizes the risk of data collection errors at the investigator's end. Patient counts were rounded up to the nearest ten, and that may influence results for infrequent outcomes; however, most of our outcomes had a relatively large number of patients.

Gender differences in asymptomatic or mild cases of COVID-19 that remain undiagnosed or did not seek medical care were not accounted for¹⁶, and hence their role might be undervalued.

In conclusion, males are more severely affected and have higher mortality from COVID-19. This gender-specific risk is especially more pronounced in advanced age. Gender disparity in poor outcomes can only be partially explained by differences in high-risk behavior and comorbidities. Further research is needed to understand the causes of this disparity and may be beneficial for decisions in both clinical and policy-making realms.

References

1. COVID-19 Dashboard by the Center for Systems Science and Engineering (CSSE) at Johns Hopkins University (JHU). <https://coronavirus.jhu.edu/map.html>. Accessed April 19, 2020.
2. WHO Coronavirus Disease 2019 (COVID-19) Situation Report – 91. https://www.who.int/docs/default-source/coronaviruse/situation-reports/20200420-sitrep-91-covid-19.pdf?sfvrsn=fcf0670b_4.
3. Team TNCPERE. The Epidemiological Characteristics of an Outbreak of 2019 Novel Coronavirus Diseases (COVID-19) — China, 2020. *China CDC Wkly*. 2020.
4. COVID-19 sex-disaggregated data tracker. <https://globalhealth5050.org/covid19/>.
5. Liu S, Zhang M, Yang L, et al. Prevalence and patterns of tobacco smoking among Chinese adult men and women: Findings of the 2010

- national smoking survey. *J Epidemiol Community Health*. 2017. doi:10.1136/jech-2016-207805
6. TriNetX. <https://www.trinetx.com/covid-19/>.
 7. ICD-10-CM Official Coding Guidelines - Supplement Coding encounters related to COVID-19 Coronavirus Outbreak. <https://www.cdc.gov/nchs/data/icd/ICD-10-CM-Official-Coding-Gudance-Interim-Advice-coronavirus-feb-20-2020.pdf>.
 8. ICD-10-CM Official Coding and Reporting Guidelines April 1, 2020 through September 30, 2020. <https://www.cdc.gov/nchs/data/icd/COVID-19-guidelines-final.pdf>.
 9. Karlberg J, Chong DSY, Lai WYY. Do Men Have a Higher Case Fatality Rate of Severe Acute Respiratory Syndrome than Women Do? *Am J Epidemiol*. 2004. doi:10.1093/aje/kwh056
 10. Alghamdi IG, Hussain II, Almalki SS, Alghamdi MS, Alghamdi MM, El-Sheemy MA. The pattern of Middle east respiratory syndrome coronavirus in Saudi Arabia: A descriptive epidemiological analysis of data from the Saudi Ministry of Health. *Int J Gen Med*. 2014. doi:10.2147/IJGM.S67061
 11. Cai H. Sex difference and smoking predisposition in patients with COVID-19. *Lancet Respir Med*. 2020. doi:10.1016/S2213-2600(20)30117-X
 12. Zhao Y, Zhao Z, Wang Y, Zhou Y, Ma Y, Zuo W. Single-cell RNA expression profiling of ACE2, the putative receptor of Wuhan 2019-nCov. *bioRxiv*. January 2020:2020.01.26.919985. doi:10.1101/2020.01.26.919985

13. Klein SL, Flanagan KL. Sex differences in immune responses. *Nat Rev Immunol*. 2016. doi:10.1038/nri.2016.90
14. Channappanavar R, Fett C, Mack M, Ten Eyck PP, Meyerholz DK, Perlman S. Sex-Based Differences in Susceptibility to Severe Acute Respiratory Syndrome Coronavirus Infection. *J Immunol*. 2017. doi:10.4049/jimmunol.1601896
15. Bowman S. Impact of electronic health record systems on information integrity: quality and safety implications. *Perspect Health Inf Manag*. 2013.
16. Nishiura H, Kobayashi T, Suzuki A, et al. Estimation of the asymptomatic ratio of novel coronavirus infections (COVID-19). *Int J Infect Dis*. 2020. doi:10.1016/j.ijid.2020.03.020

Table Legends

Table 1: Comparison of patient characteristics, presenting signs and symptoms, and laboratory findings among COVID-19 male and female patients. Demographics and comorbidities are compared before and after propensity matching of cohorts.

Table 2: Outcomes among COVID-19 male and female patients. Outcomes are compared before and after propensity score matching of cohorts.

Figure legends

Figure 1: Kaplan-Meier survival curves estimating the survival probability for outcomes up to 30 days after diagnosis of COVID-19.

- i) Mortality among propensity-matched males and females with COVID-19
- ii) Hospitalizations among propensity-matched males and females with COVID-19
- iii) Mechanical ventilation among propensity-matched males and females with COVID-19

Supplementary

Methods

Figure 1: Propensity Score Density Graph before and after matching of the male and female cohorts.

Figure 2: Sunburst diagram for COVID-19 specific medication treatment pathway. (The inner ring displays the treatments patients receive in the first line following COVID-19 diagnosis. The next ring displays the treatments patients switch to in the second line. The next ring displays the treatments patients switch to in the third line, and so on).

Table 1: Comparison of patient characteristics, presenting signs and symptoms, and laboratory findings among COVID-19 male and female patients. Demographics and comorbidities are compared before and after propensity matching of cohorts.

	Before matching			After matching		
	Males (n or %)	Females (n or %)	P-Value	Males (n or %)	Females (n or %)	P-Value
No. of patients	5,980	7,730		5350	5350	
Mean Age	54.9±18.3	50.9±18.4	<.0001	53.14±18.05	53.23±18.26	0.79
Race						
White	1380 (23.08%)	2030 (26.26%)	<.0001	1210 (22.62%)	1200 (22.43%)	0.82
Black or African American	870 (14.55%)	1350 (17.46%)	<.0001	770 (14.39%)	770 (14.39%)	1.00
Asian	90 (1.51%)	90 (1.16%)	0.082	80 (1.50%)	80 (1.50%)	1.00
Unknown	3650 (61.04%)	4250 (54.98%)				
High-Risk Behavior						
Personal history of nicotine dependence	720 (12.04%)	610 (7.89%)	<.0001	390 (7.29%)	410 (7.66%)	0.462
Current Nicotine dependence	680 (11.37%)	780 (10.09%)	0.016	490 (9.16%)	490 (9.16%)	1.000
Alcohol related disorders	380 (6.36%)	340 (4.40%)	<.0001	220 (4.11%)	230 (4.30%)	0.630
Other psychoactive substance related disorders	130 (2.17%)	160 (2.07%)	0.675	100 (1.87%)	100 (1.87%)	1.000
Opioid related disorders	60 (1.00%)	80 (1.04%)	0.855	50 (0.94%)	50 (0.94%)	1.000
Comorbid Conditions						

Hypertensive diseases	1740 (29.10%)	1960 (25.36%)	<.0001	1270 (23.74%)	1290 (24.11%)	0.650
Diabetes mellitus	970 (16.22%)	970 (12.55%)	<.0001	690 (12.90%)	690 (12.90%)	1.000
Chronic obstructive pulmonary disease	310 (5.18%)	250 (3.23%)	<.0001	170 (3.18%)	180 (3.36%)	0.587
Asthma	450 (7.53%)	1030 (13.33%)	<.0001	410 (7.66%)	420 (7.85%)	0.718
Obesity	460 (7.69%)	910 (11.77%)	<.0001	390 (7.29%)	410 (7.66%)	0.462
Heart failure	480 (8.03%)	490 (6.34%)	<.0001	320 (5.98%)	320 (5.98%)	1.000
Ischemic heart diseases	690 (11.54%)	460 (5.95%)	<.0001	360 (6.73%)	380 (7.10%)	0.446
Chronic kidney disease (CKD)	560 (9.37%)	450 (5.82%)	<.0001	340 (6.36%)	350 (6.54%)	0.694
Cerebrovascular diseases	390 (6.52%)	410 (5.30%)	0.003	260 (4.86%)	260 (4.86%)	1.000
Liver Disease	430 (7.19%)	470 (6.08%)	0.009	310 (5.79%)	310 (5.79%)	1.000
Malignant neoplasms of lymphoid, hematopoietic and related tissue	170 (2.84%)	140 (1.81%)	<.0001	110 (2.06%)	110 (2.06%)	1.000
Malignant neoplasm of bronchus and lung	70 (1.17%)	40 (0.52%)	<.0001	40 (0.75%)	40 (0.75%)	1.000
Malignant neoplasm of colon	90 (1.51%)	110 (1.42%)	0.691	60 (1.12%)	60 (1.12%)	1.000
Human immunodeficiency virus disease	60 (1.00%)	50 (0.65%)	0.020	40 (0.75%)	40 (0.75%)	1.000
Anxiety, stress-related, nonpsychotic mental disorders	620 (10.37%)	1520 (19.66%)	<.0001	580 (10.84%)	580 (10.84%)	1.000

Major depressive disorder	430 (7.19%)	1130 (14.62%)	<.0001	400 (7.48%)	420 (7.85%)	0.467
Presenting Signs and symptoms with COVID-19						
	Males			Females		
Signs and symptoms	Patients (% of the cohort)			Patients (% of the cohort)		P-Value
Dyspnea	1,050 (17.67%)			1,220 (15.88%)		0.01
Cough	1,050 (17.67%)			1,340 (17.45%)		0.72
Fever	990 (16.67%)			1,120 (14.49%)		<.0001
Pain in throat and chest	520 (8.75%)			670 (8.66%)		0.95
Hypoxemia	380 (6.35%)			330 (4.27%)		<.0001
Malaise and fatigue	360 (6.06%)			460 (5.99%)		0.86
Headache	190 (3.19%)			280 (3.64%)		0.15
Tachycardia	170 (2.84%)			160 (2.07%)		0.003
Abdominal and pelvic pain	150 (2.52%)			260 (3.38%)		0.003
Nausea and vomiting	210 (3.53%)			290 (3.77%)		0.45

Diarrhea	210 (3.53%)	260 (3.64%)	0.15
Most recent Laboratory Findings after diagnosis of COVID-19			
	Males	Females	
	Mean ± SD (N) Patients (N)	Mean ± SD (N) Patients (N)	P-value
Complete blood count			
Leukocytes (1000/uL)	8.48±7.15 (N=2,770)	7.85±6.28 (N=2,440)	< 0.0001
Hemoglobin (g/dL)	12.71±2.37 (N=2,770)	11.86±2.04 (N=2,430)	< 0.0001
Platelets (1000/uL)	283.63±135.78 (N=2,760)	298.85±133.06 (N=2,440)	< 0.0001
Neutrophils (/100 leukocytes)	66.38±15.82 (N=2,010)	62.67±15.15 (N=1,720)	< 0.0001
Lymphocytes (1000/uL)	1.68±5.69 (N=2,060)	1.65±2.30 (N=1,760)	0.80
Metabolic Panel			
Sodium (mmol/L)	137.63±5.29 (N=1,100)	138.35±4.89 (N=1,030)	0.0013
Potassium (mmol/L)	4.21±0.70 (N=1,100)	3.98±0.87 (N=1,030)	< 0.0001
Creatinine (mg/dL)	1.50±1.85 (N=2,790)	1.06±1.19 (N=2,440)	< 0.0001
Liver Function Tests			
Alanine aminotransferase (ALT) (U/L)	67.86±154.49 (N=2,630)	48.30±73.15 (N=2,440)	< 0.0001

Aspartate aminotransferase (AST) (U/L)	79.13±534.60 (N=2,620)	51.21±234.19 (N=2,260)	0.02
Alkaline phosphatase (U/L)	92.71±69.44 (N=2,590)	90.94±64.54 (N=2,220)	0.36
Gamma glutamyl transferase (U/L)	101.65±128.18 (N=1,710)	76.09±105.33 (N=1,410)	0.36
Total Bilirubin (mg/dL)	0.66±0.83 (N=2,610)	0.50±0.59 (N=2,230)	< 0.0001
Albumin (g/dL)	3.24±0.77 (N=2,580)	3.35±0.77 (N=2,200)	< 0.0001
Coagulation profile			
Prothrombin time (PT) (seconds)	14.60±7.86 (N=350)	13.99±4.63 (N=240)	0.28
Activated partial thromboplastin time (seconds)	39.64±21.18 (N=300)	37.69±18.5 (N=200)	0.29
Inflammatory, infectious and other markers			
Ferritin (ng/mL)	1,611.5±2,915.27 (N=1,600)	842.75±1,816.04 (N=1,280)	< 0.0001
C reactive protein (mg/L)	38.12±79.7 (N=2,380)	30.27±64.50 (N=2,040)	< 0.0001
Lactate dehydrogenase (U/L)	381.11±558.41 (N=2,030)	338.55±312.84 (N=1,700)	< 0.0001
Interleukin-6 (pg/mL)	237.87±956.99 (N=430)	197.87±893.87 (N=260)	< 0.0001
D-dimer (ng/mL)	20.35±140.165 (N=70)	1.82±2.53 (N=50)	0.37
Creatinine Kinase (U/L)	252.33±1,243.23 (N=1,660)	119.00±521.32 (N=1,330)	< 0.0001
Procalcitonin (ng/mL)	1.38±6.36 (N=870)	1.35±6.69 (N=580)	0.93

Table 2: Outcomes among COVID-19 male and female patients. Outcomes are compared before and after propensity score matching of cohorts.

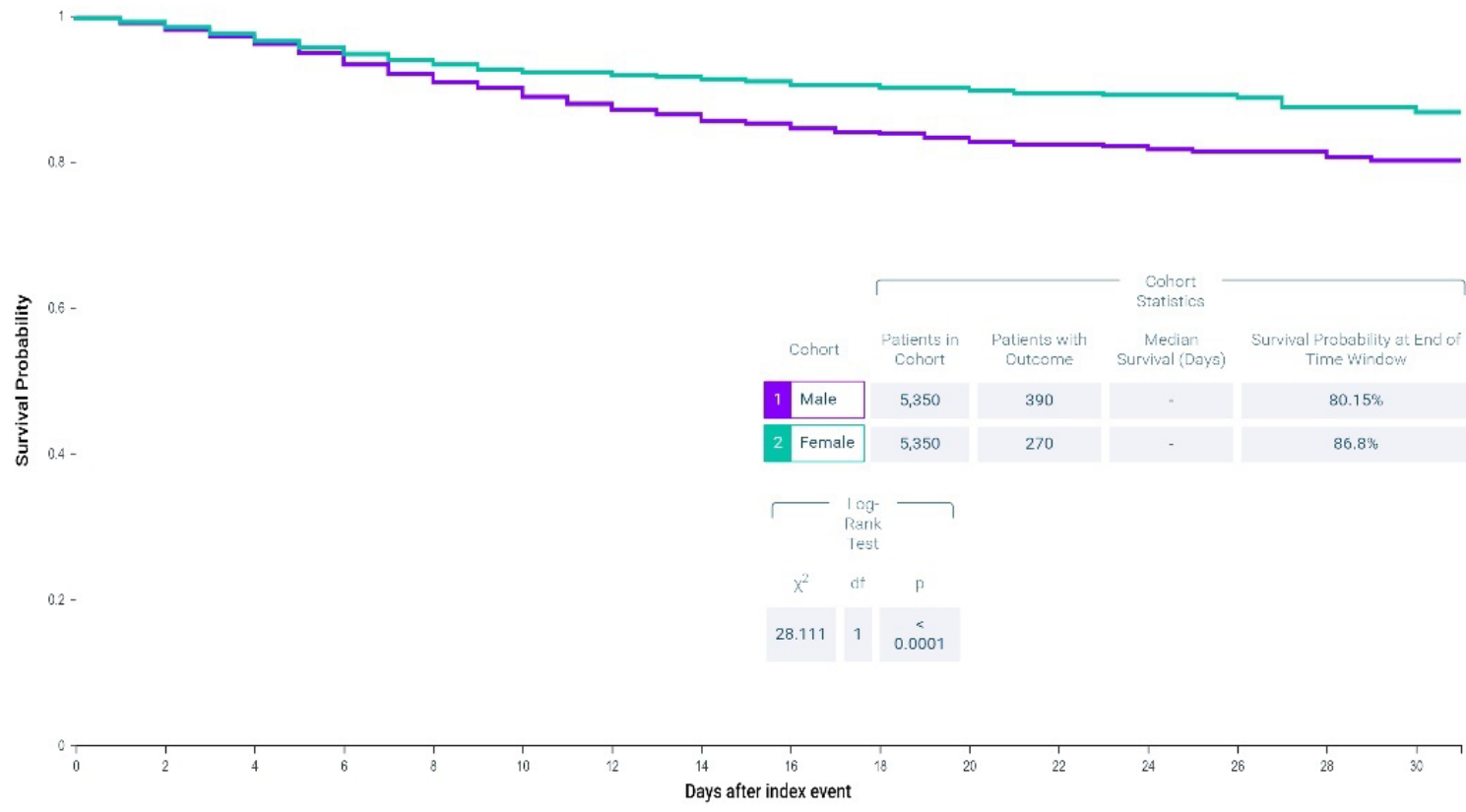
Outcomes	Males		Females		Measure of Association		
	Patients with outcomes	Risk (%)	Patients with outcomes	Risk (%)	Risk Ratio (95% confidence interval)	Risk difference (95% confidence interval)	P-Value
Before propensity score matching							
Mortality	530/5,980	8.86%	330/7,730	4.27%	2.08 (1.82,2.37)	4.59% (3.74%, 5.44%)	<0.0001
Hospitalization	2,150/5,980	35.95%	1,840/7,730	23.80%	1.51(1.43,1.59)	12.15% (10.60%, 13.69%)	<0.0001
Mechanical Ventilation	140/5,980	2.34%	100/7,730	1.29%	1.81(1.40,2.33)	1.05% (0.59%, 1.51%)	<0.0001
After propensity score matching							
Mortality	390/5,350	7.29%	270/5,350	5.05%	1.44 (1.24,1.67)	2.24% (1.33%, 3.15%)	<0.0001
Hospitalization	1,810/5,350	33.83%	1,410/5,350	26.35%	1.28 (1.21,1.36)	7.48% (5.74%, 9.20%)	<0.0001
Mechanical Ventilation	120/5,350	2.24%	70/5,350	1.31%	1.71 (1.28,2.30)	0.93% (0.43%, 1.43%)	0.0003
Subgroup Age ≥ 50 years After propensity score matching							
Mortality	380/3,020	12.58%	240/3020	7.95%	1.58 (1.35-1.84)	4.63% (3.10%, 6.16%)	<0.0001
Mechanical Ventilation	80/3,020	2.64%	60/3020	1.98%	1.33 (0.96-1.86)	0.66% (-0.097%, 1.42%)	0.0872

Hospitalization	1,340/3,020	44.37%	1,100/3020	36.42%	1.21 (1.14-1.29)	7.94% (5.48%, 10.41%)	<0.0001
-----------------	-------------	--------	------------	--------	------------------	--------------------------	---------

Figure 1: Kaplan-Meier survival curves estimating the survival probability for outcomes up to 30 days after diagnosis of COVID-19.

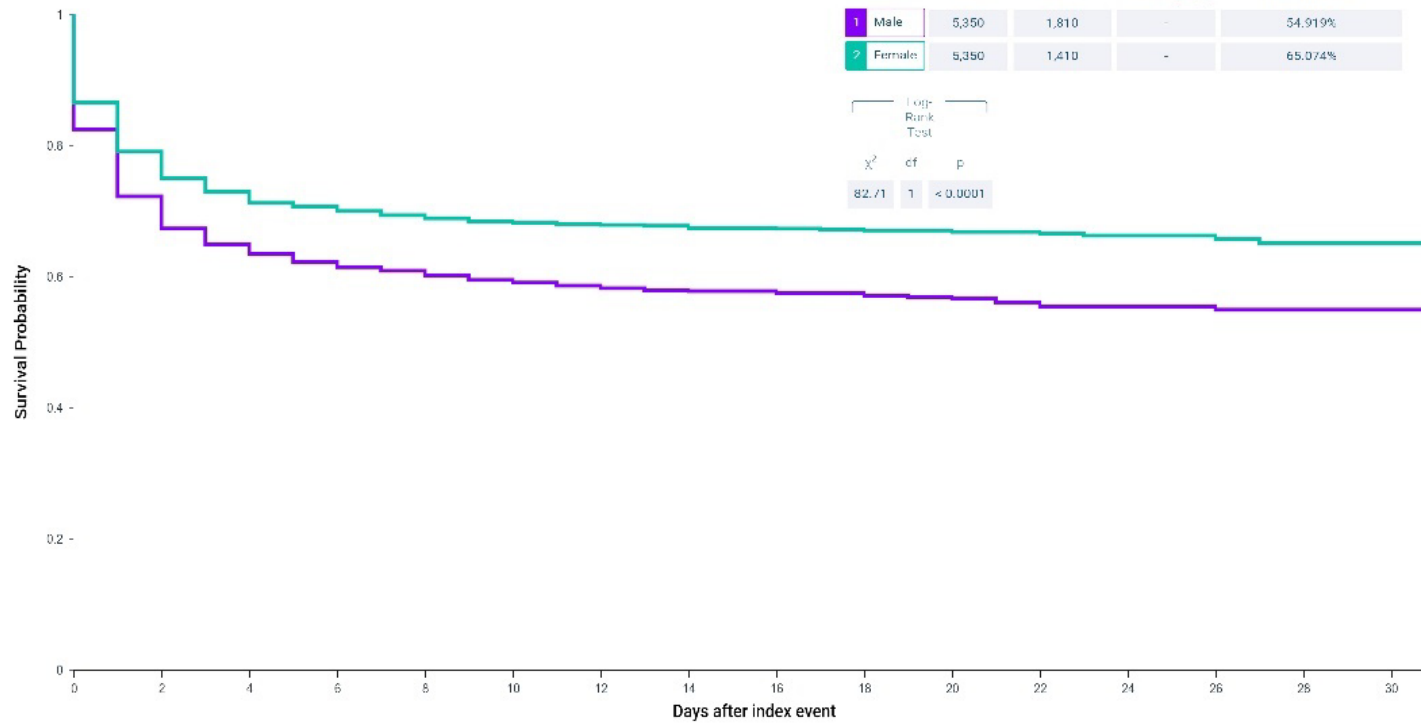
i) Mortality among propensity-matched males and females with COVID-19

Kaplan-Meier Survival Curve



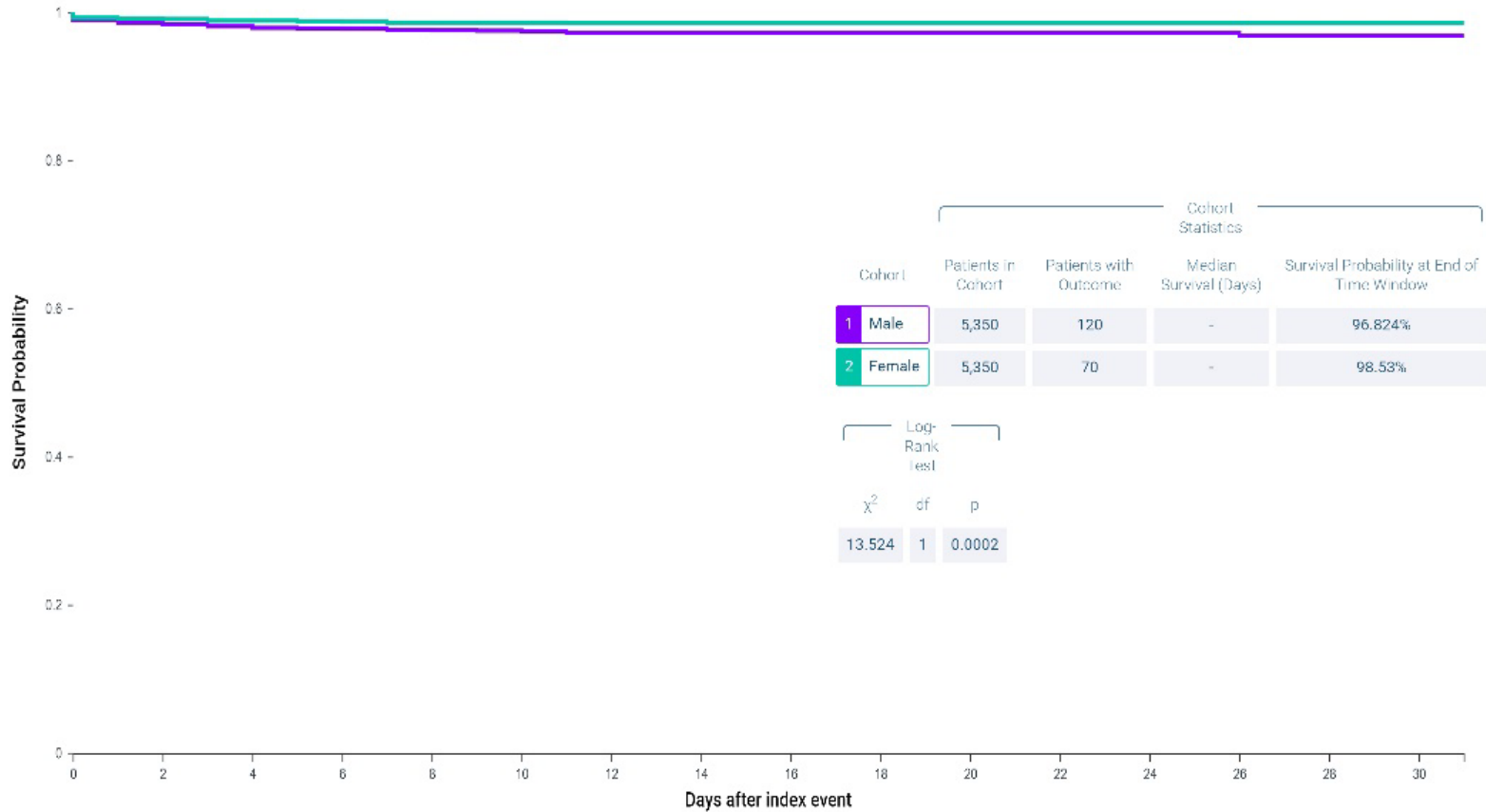
i) Hospitalizations among propensity-matched males and females with COVID-19

Kaplan-Meier Survival Curve



ii) Mechanical ventilation among propensity-matched males and females with COVID-19

Kaplan-Meier Survival Curve



Supplementary Appendix

Methods

Data Source

We used TriNetX (Cambridge, MA, USA), a global federated health research network providing real-time access to electronic medical records (EMR) of more than 49 million patients from 37 healthcare organizations (HCOs) predominantly in the United States. TriNETX recently created a COVID-19 Research Network

to help researchers expedite the COVID-19 related research and fast-tracked its aggregation of clinical data from the participating HCO's. COVID-19 specific diagnosis and terminology following the World Health Organization (WHO) and Centers for Disease Control (CDC) COVID-19 criteria were incorporated.

TriNetX cloud-based features allow real-time access to the de-identified longitudinal clinical data along with the analytics to analyze complex research questions. The de-identified clinical data such as diagnoses, procedures, medications, laboratory values, and genomic information are aggregated directly from the electronic medical records (EMR) systems of the participating HCOs continuously. Both the patients and HCO's as data sources stay anonymous. Participating HCO's include a mix of inpatient, outpatient, and specialty care services and provide care to a diverse patient population from different age groups, ethnicity, income levels, and geographical region.

As a federated network, TriNetX received a waiver from Western IRB since only aggregated counts, statistical summaries of de-identified information, but no protected health information is received, and no study-specific activities are performed in retrospective analyses.

Search Criteria and Definition of Variables

Selection of COVID-19 patients

The search was conducted following the criteria provided by the TriNETX to identify potential COVID-19 patients as per the CDC COVID-19 coding guidelines. We used the search query provided by the TriNetX network to identify COVID-19 patients for our study to build patient cohorts. These codes included International Classification of Diseases, Ninth Revision and tenth Revision, Clinical Modification (ICD-10-CM) codes U07.1 (COVID-19, virus identified), B34.2 (Coronavirus infection, unspecified), B97.29 (Other coronavirus as the cause of diseases classified elsewhere) and J12.81 (Pneumonia due to SARS-associated coronavirus). Patients identified with diagnosis code 079.89 (Other specified viral infection) were excluded. Only patients diagnosed with the codes, as mentioned earlier between January 20, 2020 (first confirmed case in the USA) to April 15, 2020, were included. The B97.29 code was specifically included based on the recommendation from the general guidance of the ICD-10-CM Official Coding Guidelines released by the CDC on February 20, 2020. Similarly, U07.1 is the new specific code for a confirmed diagnosis of the COVID-19 with a positive COVID-19 test result starting April 1, 2020, as per the new CDC guidelines. The codes B34.2 and J12.81 were used more often before the CDC guidelines. Patients with ICD-9 code 079.89 (mapped to ICD-10 code B34.2 and B97.2) were excluded to reduce any false positive COVID-19 patients because this ICD-9 code can still be used occasionally as "catch-all" code for more than 50 viral infections.

Study Variables

Patient age, race, comorbid conditions, signs and symptoms, laboratory data, medications, and hospitalization related data were recorded for both male and female cohort of COVID-19 patients. The diagnosis of COVID-19 was defined as the index event. Patient comorbidities were estimated based on diagnosis

reported at the index event or any time before the index event. The patient presenting signs and symptoms were estimated at the time of the index event or up to 14 days before the index event.

Study Outcomes

The time window to estimate all outcomes was up to 30 days from the day of COVID-19 diagnosis. The primary outcome was the risk of mortality, mechanical ventilation, and hospitalization. Other outcomes also included laboratory data and medications specific to COVID-19 treatment.

Statistical Analysis

All statistical analyses were performed in real-time using TriNetX. The means, standard deviations, and proportions of clinical facts were used to describe and compare patient characteristics. The 1:1 propensity score matching was performed using a greedy nearest-neighbor matching algorithm with a caliper of 0.1 pooled standard deviations to account for confounding variables. For each outcome, the risk difference and risk ratio were calculated to compare the association of the gender with the outcome. Kaplan-Meier survival analyses to estimate the survival probability of each outcome at the end 30 days after diagnosis of COVID-19. Patients were censored when the time window ended or on the day after the last fact in their record. Hypothesis testing for Kaplan-Meier survival curves was conducted using the log-rank test for each outcome with an a-priori defined two-sided alpha of less than <0.05 for statistical significance.

Figure 1: Propensity Score Density Graph before and after matching of the male and female cohorts.

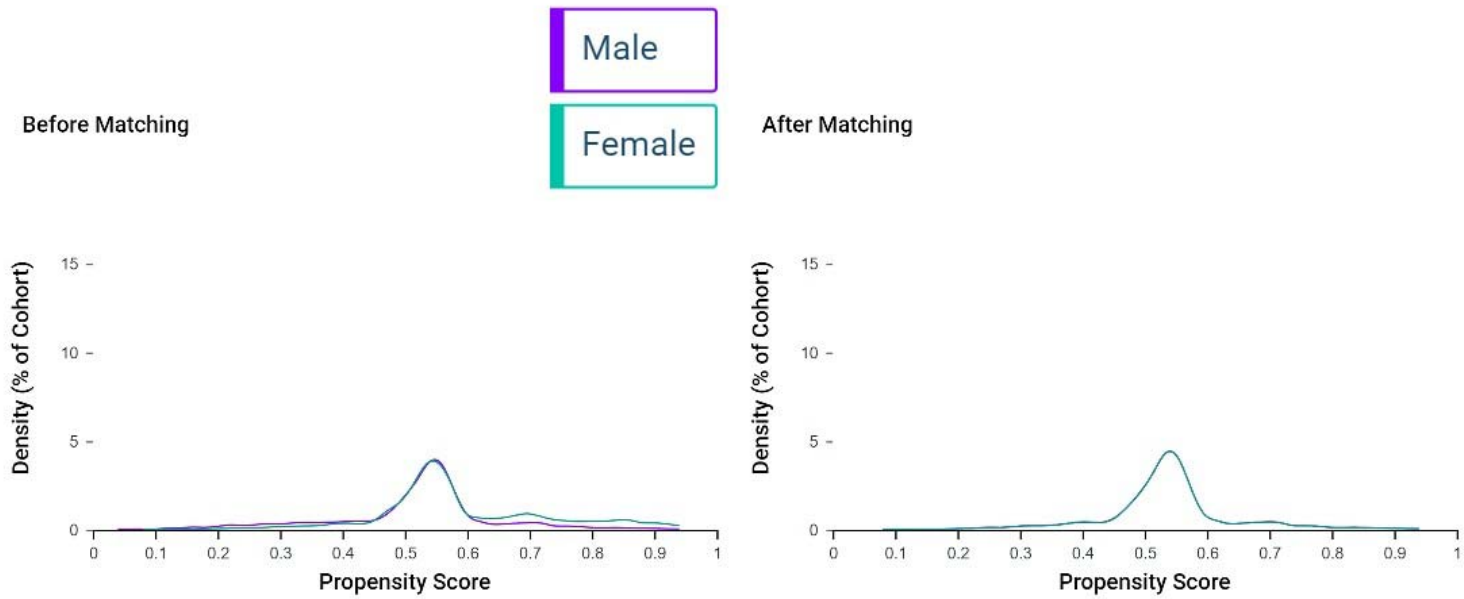
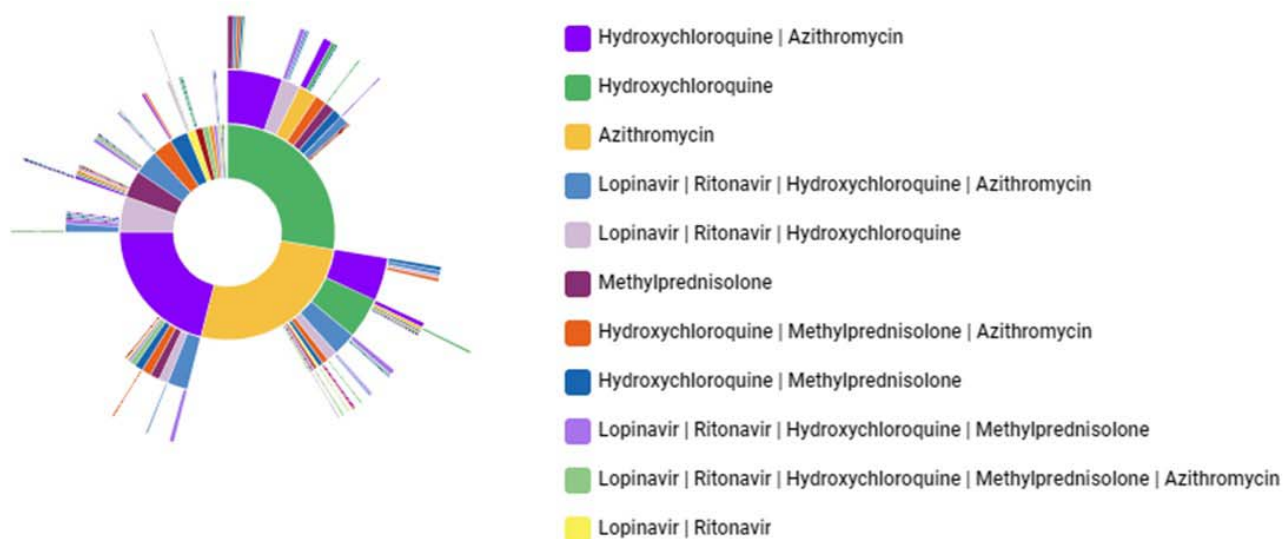


Figure 2: Sunburst diagram for COVID-19 specific medication treatment pathway. (The inner ring displays the treatments patients receive in the first line following COVID-19 diagnosis. The next ring displays the treatments patients switch to in the second line. The next ring displays the treatments patients switch to in the third line, and so on).

i) COVID-19 specific treatment pathway in Male patients



4,089 patients or 68% of the cohort don't have a pathway

ii) COVID-19 specific treatment pathway in Female patients



- Azithromycin
- Hydroxychloroquine | Azithromycin
- Hydroxychloroquine
- Lopinavir | Ritonavir | Hydroxychloroquine | Azithromycin
- Lopinavir | Ritonavir | Hydroxychloroquine
- Methylprednisolone
- Hydroxychloroquine | Methylprednisolone
- Hydroxychloroquine | Methylprednisolone | Azithromycin
- Lopinavir | Ritonavir | Hydroxychloroquine | Methylprednisolone
- Lopinavir | Ritonavir | Hydroxychloroquine | Methylprednisolone | Azithromycin
- Methylprednisolone | Azithromycin

6,117 patients or 79% of the cohort don't have a pathway