

Clinical and historical features associated with severe COVID-19 infection: a systematic review

Pigoga, JL¹, MPH; Friedman, A^{1,2}, MSc; Broccoli, M³, MD; Hirner, S⁴, MS; Naidoo, AV¹, FCEM(SA); Singh, S¹, FCEM(SA); Werner, K¹, MSc; Wallis, LA¹, MBChB, FRCEM, PhD

Author affiliations

1. Division of Emergency Medicine, University of Cape Town, Cape Town, South Africa
2. University of California, San Francisco, San Francisco, California, USA
3. Department of Emergency Medicine, Boston Medical Center, Boston, Massachusetts, USA
4. University of Colorado School of Medicine, Aurora, CO, USA

ABSTRACT

Background: There is an urgent need for rapid assessment methods to guide pathways of care for COVID-19 patients, as frontline providers need to make challenging decisions surrounding rationing of resources. This study aimed to evaluate existing literature for factors associated with COVID-19 illness severity.

Methods: A systematic review identified all studies published between 1/12/19 and 19/4/20 that used primary data and inferential statistics to assess associations between the outcome of interest - disease severity - and historical or clinical variables. PubMed, Scopus, Web of Science, and the WHO Database of Publications on Coronavirus Disease were searched. Data were independently extracted and cross-checked independently by two reviewers using PRISMA guidelines, after which they were descriptively analysed. Quality and risk of bias in available evidence were assessed using the Grading of Recommendations, Assessment, Development and Evaluations (GRADE) framework. This review was registered with PROSPERO, registration number CRD42020178098.

Results: Of the 6202 relevant articles found, 63 were eligible for inclusion; these studies analysed data from 17648 COVID-19 patients. The majority (n=57, 90.5%) were from China and nearly all (n=51, 90.5%) focussed on admitted adult patients. Patients had a median age of 52.5 years and 52.8% were male. The predictors most frequently associated with COVID-19 disease severity were age, absolute lymphocyte count, hypertension, lactate dehydrogenase (LDH), C-reactive protein (CRP), and history of any pre-existing medical condition.

Conclusion: This study identified multiple variables likely to be predictive of severe COVID-19 illness. Due to the novelty of SARS-CoV-2 infection, there is currently no severity prediction tool designed to, or validated for, COVID-19 illness severity. Findings may inform such a tool that can offer guidance on clinical treatment and disposition, and ultimately reduce morbidity and mortality due to the pandemic.

INTRODUCTION

Despite containment efforts, COVID-19 has reached pandemic status. As of 21 April 2020, there are 2.5 million confirmed cases worldwide, with over 170,000 deaths;^{1 2} these numbers are only expected to grow in the coming weeks and months. Although data surrounding the novel coronavirus are rapidly evolving, initial estimates depict a dire situation: between 15% and 20% of infections lead to severe or critical disease.^{2 3} Highly vulnerable populations, compromised by factors such as malnutrition and comorbid diseases, are believed to be at greater risk of developing severe and critical disease.⁴ Mortality has varied across settings, but early data suggest a case fatality rate ranging from 0.5% to 4.5%.⁵⁻⁸ As COVID-19 spreads, healthcare systems worldwide are being strained.^{9 10} Early recognition, resuscitation and referral have proven key to effective responses, yielding lower mortality.¹¹ High volumes of patients in need of critical care limit systems' abilities to provide such care; this is already occurring even in the most highly-resourced settings.^{9 10} It is increasingly likely that the countries with the most limited capacity to respond will soon be affected on a large scale.¹² Many low-resource settings (LRS) have scarce critical care resources, with limitations in the availability of oxygen and other basic resources as well as healthcare provider shortages.^{13 14} While ongoing acute and emergency care system strengthening efforts are underway and showing impact in many of these settings, these systems will not be able to keep pace with the emerging demand.¹² Immediate targeted efforts are needed to assist stressed healthcare systems around the globe in managing and treating large numbers of acutely ill COVID-19 patients.¹²

Frontline providers in emergency units (EUs) need to make challenging decisions surrounding rationing of resources, including oxygen and ventilators, upon initial assessment of COVID-19 patients. Clinical guidance for evaluating patients' respiratory needs and subsequent dispositions is essential, particularly in LRS. A range of scoring systems are available to guide care for severely ill patients. While these tools may have some utility in predicting COVID-19 patient severity, they are likely limited in this unique context. Some scores are designed for specific care settings, such as intensive care units (ICUs), a very scarce resource in LRS.¹⁵ While selected COVID-19 patients can be treated in ICUs, most patients are less critical, requiring interventions more appropriate for general ward and EU settings. Thus, a tool predicting outcomes based solely on those already admitted to ICU may have reduced utility across the range of illness severity seen in this disease. Other scoring systems were purpose-designed for patients presenting with specific conditions, such as pneumonia and sepsis.^{15 16} Condition-specific tools may be of some use in assessing COVID-19 patients but are likely limited in that these patients initially present with a range of symptoms, only some of which involve respiratory disease or septic shock.¹⁷ High burdens of data entry seen in many tools can lead to increased time-to-decision making and frequent missing data points.¹⁸⁻²⁰ Some also involve additional investigations, including blood tests and imaging,^{15 21-23} that have very limited availability in LRS.

In the context of the COVID-19 crisis, a low-input severity scoring tool could be a cornerstone of ensuring timely access to appropriate care and justified use of critically limited resources. In order to identify or develop a severity assessment tool appropriate for COVID-19 patients, factors contributing to, and predictive of, patient severity must first be understood. This study aimed to systematically evaluate existing COVID-19 literature for relationships between historical characteristics and clinical presentations and investigations, and illness severity.

METHODS

A systematic review was conducted to identify papers that studied potential associations between demographics, comorbidities, clinical presentations and investigational studies, and COVID-19 illness severity. The Preferred Reporting Items for Systematic Reviews and Meta-Analysis (PRISMA) guidelines were adhered to throughout this process.²⁴

Search strategy and selection criteria

Three online databases (PubMed, Scopus, and Web of Science) were searched using a combination of free-text phrases and medical subject headings. Results were restricted to those in the English, Spanish, and Mandarin languages, published between 01 December 2019 and 19 April 2020. Search terms related to COVID-19 infection (“NCoV”, “Coronavirus”, “severe acute respiratory syndrome coronavirus 2”, “COVID”, “COVID-19”, “Coronavirus infections”) and illness severity (“Severity of Illness Index”, “severity”, “critical”, “critical illness”, “critical care”, “patient admission”, “length of stay”, “outcome”, “morbidity”, “mortality”, “death”, “respiratory insufficiency”, “respiratory distress syndrome, adult”, and “respiration, artificial”) were used in combination with those for demographics (“demographic”, “demographic”, “age”, “sex”, and “gender”), historical features (“comorbidity”, “comorbidity”, “pre-existing”, and “condition”), clinical presentation (“signs and symptoms”, “symptom”, “characteristic”, “clinical” and, “presentation”), and diagnostic investigations (“investigation”, “laboratory”, “blood test”, “imaging”, “X-ray” and, “CT”). Refer to appendix 1 for full search strategy.

All publications in the World Health Organization’s (WHO) Database of Publications on Coronavirus Disease (COVID-19) were also included.²⁵ Reference lists of all texts eligible full texts were reviewed to identify additional relevant literature.

Duplicates were manually removed. All articles were screened for inclusion by two independent reviewers (JLP, KW, SS, AVN), after which a third reviewer (AF, JLP, MB, SS, AVN) retrieved each eligible full-text and considered for inclusion. Two discrepancies in agreement were resolved through discussion.

This study included all full-text manuscripts, both pre-print and published, that provided data on associations between the outcome of interest - disease severity - and demographics, comorbidities, symptoms, vital signs, and/or investigational studies of confirmed COVID-19 patients admitted to hospitals. Research-based correspondence pieces were also included, as this is an additional format of rapid research dissemination in the COVID-19 era. Those not directly evaluating primary data, including literature reviews and meta-analyses, were excluded, as were opinion and editorial pieces, case reports, and clinical management guidelines. A range of definitions and parameters of illness severity were considered acceptable as comparator outcomes, including disease severity itself (as defined by the article’s authors), as well as proxy measures for disease severity, such as inpatient mortality and ICU admission²⁶. Manuscripts that did not include statistical analyses evaluating significance were excluded. There were no restrictions to study design. Studies evaluating exclusively children or pregnant populations were excluded.

Data analysis

Data extracted from each article included author(s); title; countries involved; study population demographics; measure and definition of disease severity; and each presenting symptom, comorbidity, initial vital sign, and investigational study that was statistically assessed against disease severity, along

with notation of whether each variable was found to be significantly associated with severity. Variables reported with a p-value ≤ 0.05 were considered significantly associated with illness severity.

One reviewer (AF, JLP, MB, SH, SS, AVN) extracted data, and second reviewer (AF and JLP) cross-checked all extractions. All extracted variables were documented categorically as ‘significant’, ‘not significant’ or ‘not reported’. Grading of Recommendations, Assessment, Development and Evaluations (GRADE) framework²⁷ was used to assess quality of and bias in study evidence. Two reviewers (AF and JLP) graded each study, reaching consensus via discussion when necessary.

A descriptive analysis of the number of papers that reported each variable as significantly associated with illness severity was conducted. No tests of statistical significance were conducted.

Patient and public involvement

Given the nature of this review, it was not appropriate to involve patients or the public in this study’s design or execution.

RESULTS

The literature search identified 6202 articles across four databases (Figure 1). Thirty-one relevant publications referenced in the databases’ articles were also found. After removing duplicates, 5770 studies remained; title and abstract screening led to the removal of 5361 (92.9%) of these as they did not meet inclusion criteria. Upon review of 409 full-texts, 350 articles were excluded: 289 (82.6%) did not include significance testing for relevant variables, 55 (15.7%) did not evaluate primary data, and 2 (0.6%) were in a language other than English, Mandarin, or Spanish.

Sixty-three articles were eligible for inclusion (Table 1). The majority (n=57, 90.5%) were from China; two publications were available from the United States and one each from Italy, France, South Korea, and Singapore. Most publications (n=61, 96.8%) were in English; two (3.2%) were only available in Mandarin. All studies were observational cohort studies; 57 (90.5%) retrospective and six (9.5%) prospective. Due in large part to study design, nearly all (n=62, 98.4%) studies were of low quality. One (1.6%) study was of moderate quality. Together, these studies analysed data from 17648 patients diagnosed with COVID-19 by laboratory technique (PCR or RT-PCR). Sample sizes in these studies ranged from 12 to 4103 patients, with a mean of 280. Of the 58 publications reporting sex, a median 52.8% patients were male. The median age was 52.5 years across 56 reporting studies. Eight publications included both children and adults. Four publications focused on specific populations, including healthcare workers (n=2), and those with cancer (n=1), and cardiovascular disease (n=1); the remaining 59 studies noted no population restrictions. Approximately 41% (n=26) of publications defined illness severity by the National Health Committee of the People’s Republic of China’s (NHC) guidelines (Table 2)²⁵. Fourteen studies (22.2%) evaluated inpatient mortality, and another six (9.5%) studied ICU admission.

The most commonly analysed variables in relation to patient severity were age, sex, absolute lymphocyte count, and hypertension. The predictors most frequently associated with COVID-19 disease severity were age, absolute lymphocyte count, hypertension, lactate dehydrogenase (LDH), C-reactive protein (CRP), and history of any pre-existing medical condition.

Age was commonly identified as a significant predictor of illness severity (Table 3). The comorbidities most often reported as significant in patients with poorer outcomes were history of any pre-existing medical condition, hypertension, diabetes, and cardiovascular disease (Table 3). The presenting

symptom most frequently associated with severe disease was dyspnoea or difficulty in breathing (Table 4). All other symptoms, including fever or chills, cough, sputum production, myalgias, and diarrhoea among others, were more frequently not associated with severe disease. Six of ten (60%) studies evaluating respiratory rate for initial vitals found it to be a predictor of severity, and four of five (80%) for SpO₂.

The most commonly associated laboratory values were absolute lymphocyte count, LDH, CRP, D-dimer, and procalcitonin (Table 5). Among associated laboratory values, PaO₂/FiO₂, N-terminal b-type natriuretic peptide (NT-proBNP) and blood glucose were each consistently reported as significant across multiple studies. Abnormal CT was significant in ten of 16 (62.5%) studies, and abnormal chest X-ray in two of four (50%) (Table 5).

CONCLUSION

The novelty of SARS-CoV-2 infection has led to many hypotheses regarding potentially significant predictors of patient illness. This study aimed to provide clarity around potential predictors by presenting a systematic review of the features most frequently and consistently associated with COVID-19 illness severity. The available literature evaluates a broad range of clinical characteristics and investigations, highlighting variables likely to be significantly associated with illness severity, including age, history of pre-existing medical conditions, dyspnoea on presentation, and a range of blood tests.

In line with several publications,²⁸⁻³⁰ age was identified as a predictor of illness severity in nearly all studies. However, not all studies addressed confounding in their methodology. It is not clear whether age is an independent predictor for severity due to decreased physiological reserve or if increased rates of comorbidities amongst elderly populations influence its significance. Results suggest that any pre-existing condition may put COVID-19 patients at higher risk of poor outcomes. But, when looking at specific conditions, few comorbidities were found to be consistently significant across the literature. Hypertension, cardiovascular disease, and body mass index (BMI) were found to be significant predictors in the majority of instances where they were evaluated; these should be assessed further in future investigations

In clinical practice, clinical discriminators and vital signs play important roles in determining acuity. Shortness of breath or dyspnoea was the only presenting symptom reported as a significant predictor of severity across these studies. An earlier meta-analysis of COVID-19 data also supports this conclusion.³¹ Dyspnoea is easy to assess and already being used in many settings for COVID-19 screening,³¹⁻³³ making it a candidate for potential inclusion in a COVID-19 severity scoring tool. Data on initial vital signs were inconclusive.

Although a large portion of potentially predictive variables depend on blood investigations, these predictors may have limited utility in the initial management of COVID-19 disease, especially in LRS: Faced with scarce time and resources, and overwhelming patient numbers, clinicians around the world are in need of near-immediate indicators of illness severity. Potentially relevant severity calculators such as the Pneumonia Severity Index and CURB-65, require blood investigations and imaging to predict mortality, and are based on non-COVID-19 pneumonia,^{23 34} limiting their utility in the pandemic.

Due to the novelty of SARS-CoV-2 infection, there are currently no scoring systems validated for COVID-19 illness severity assessment either at the initial point of entry to the healthcare system or

during admission. Such a tool could enable rapid classification of patients' illness severity to determine disposition and resource allocation, aiding overwhelmed healthcare systems facing limited resources. It could assist frontline providers in decision-making surrounding resource allocation, including both the physical - e.g. oxygen and mechanical ventilation - and human resources necessary to oversee such interventions in a timely, appropriate manner for the rapidly increasing volume of COVID-19 patients.

Most LRS already suffered from scarcities of oxygen, mechanical ventilation and ICU beds pre-COVID-19,³⁵ and the current resource constraints seen in highly-resourced settings will likely be even more extreme in LRS.^{36,37} Ethical allocation of resources is expected to become a necessity in all settings, as providers will have to divide resources across both COVID-19 and non-COVID-19 patients, many of whom will have similar prognoses.³⁸ Though a severity scoring tool may identify a patient's need for oxygen or mechanical ventilation, broader resource allocation for all patient populations requires ethical frameworks beyond such a tool's scope. This review's findings may have utility as components of a COVID-19-specific severity scoring tool that could offer guidance on clinical treatment and disposition, and ultimately reduce morbidity and mortality due to the COVID-19 pandemic.

Some discrepancies exist between our findings and calculators currently being used to evaluate COVID-19 patients, namely on the significance of initial vitals, presenting symptoms, laboratory values and imaging findings. Though our findings were inconclusive in regard to initial vitals, one study reported that qSOFA was predictive of COVID-19 illness severity,³⁹ indicating that altered mental status, tachypnoea and systolic blood pressure ≤ 100 mmHg could be predictive in a severity scoring tool. Most pneumonia clinical calculators to predict illness severity rely on laboratory and imaging investigations that were insignificant in our systematic review—aside from glucose, absolute lymphocyte count and PaO₂/FiO₂—and are not immediately available in most LRS. Various calculators also emphasise sex and pulmonary co-morbidities, which were found to be independently insignificant in our review. The discrepancies between our systematic review and the clinical calculators of illness severity being used in this pandemic warrant a COVID-19 specific-calculator based on the emerging evidence rather than single-institution experience to facilitate illness severity stratification.

Due to the emergent COVID-19 pandemic and need for data to inform responses, rapid efforts are being made to publish any available information. Our review included research-based correspondence and pre-print articles alongside peer-reviewed publications, all of which were in the form of observational cohort studies. However, all studies performed well against GRADE criteria, scoring at least as well as is expected for cohort studies (low quality or above).

An overwhelming majority of studies originated in China; this suggests that there may be increased homogeneity in the data and that results might not be translatable to other settings. It could not be confirmed that none of the publications used populations from the same patient database.

Findings of this study may also be limited in that they are solely descriptive, lacking any testing of statistical significance. Numerous definitions for, and proxy measures of, illness severity were presented in the primary literature included in this review. While this variance may have influenced results, it could not be avoided given the urgency of the COVID-19 pandemic and lack of existing evidence.

This systematic review presents the features most associated with COVID-19 illness severity based on frequency and consistency of reporting publications. These findings could aid frontline providers in

determining how to allocate scarce resources, namely oxygen and mechanical ventilation, in a timely and appropriate manner for the rapidly increasing volume of COVID-19 patients around the world, but especially in LRS. It is our hope that by using significant variables such as age, history of comorbidity, and dyspnoea as a presenting symptom, providers in LRS can quickly predict illness severity to guide clinical treatment and disposition of patients with COVID-19 disease. Given the urgency of the pandemic and the almost universally low-quality of data, future research collaborations with larger samples and prospective designs are critical to improving COVID-19 illness severity prediction and subsequent management.

Contributors: LAW, JLP, and MB designed the study. JLP performed the database searches. JLP, KW, SS, and AVN screened articles titles and abstracts for inclusion. AF, JLP, MB, SS and AVN screened eligible full texts for inclusion. AF, JLP, MB, SH, SS, and AVN extracted data. JLP and AF cross-checked all data extractions, assessed quality of included studies, performed data analysis, and drafted the manuscript. All authors contributed to revising the manuscript and have approved of the final version. LAW is the guarantor.

Funding: No funding was received for this study.

Competing interests: None declared.

Data availability statement: Additional extracted data not provided in-text or as supplementary information are available upon request.

REFERENCES

1. COVID Cases 2020 [Available from: <https://www.worldometers.info/coronavirus/> accessed 29 March 2020.
2. Coronavirus disease (COVID-19) outbreak Geneva: World Health Organization; 2020 [Available from: <https://www.who.int/emergencies/diseases/novel-coronavirus-2019> accessed 20 March 2020.
3. Report of the WHO-China Joint Mission on Coronavirus Disease 2019 (COVID-19) Geneva: World Health Organization, 2020.
4. Yang J, Zheng Y, Gou X, et al. Prevalence of comorbidities in the novel Wuhan coronavirus (COVID-19) infection: a systematic review and meta-analysis. *Int J Infect Dis* 2020 doi: 10.1016/j.ijid.2020.03.017 [published Online First: 2020/03/17]
5. Korean Society of Infectious D, Korean Society of Pediatric Infectious D, Korean Society of E, et al. Report on the Epidemiological Features of Coronavirus Disease 2019 (COVID-19) Outbreak in the Republic of Korea from January 19 to March 2, 2020. *J Korean Med Sci* 2020;35(10):e112. doi: 10.3346/jkms.2020.35.e112 [published Online First: 2020/03/17]
6. Onder G, Rezza G, Brusaferro S. Case-Fatality Rate and Characteristics of Patients Dying in Relation to COVID-19 in Italy. *JAMA* 2020 doi: 10.1001/jama.2020.4683 [published Online First: 2020/03/24]
7. Yang S, Cao P, Du P, et al. Early estimation of the case fatality rate of COVID-19 in mainland China: a data-driven analysis. *Ann Transl Med* 2020;8(4):128. doi: 10.21037/atm.2020.02.66 [published Online First: 2020/03/17]
8. Coronavirus disease 2019 (COVID-19) Situation Report – 66. Geneva World Health Organization 2020.
9. Lai S, Bogoch I, Watts A, et al. Preliminary risk analysis of 2019 novel coronavirus spread within and beyond China., 2020.
10. Liew MF, Siow WT, MacLaren G, et al. Preparing for COVID-19: early experience from an intensive care unit in Singapore. *Crit Care* 2020;24(1):83. doi: 10.1186/s13054-020-2814-x [published Online First: 2020/03/11]
11. Sun Q, Qiu H, Huang M, et al. Lower mortality of COVID-19 by early recognition and intervention: experience from Jiangsu Province. *Ann Intensive Care* 2020;10(1):33. doi: 10.1186/s13613-020-00650-2 [published Online First: 2020/03/20]
12. Gilbert M, Pullano G, Pinotti F, et al. Preparedness and vulnerability of African countries against importations of COVID-19: a modelling study. *Lancet* 2020;395(10227):871-77. doi: 10.1016/S0140-6736(20)30411-6 [published Online First: 2020/02/24]
13. Chavula C, Pigoga JL, Kafwamfwa M, et al. A cross-sectional evaluation of emergency care capacity at public hospitals in Zambia 2018.
14. Bitter CC, Rice B, Periyanyagam U, et al. What resources are used in emergency departments in rural sub-Saharan Africa? A retrospective analysis of patient care in a district-level hospital in Uganda. *BMJ Open* 2018;8(2):e019024. doi: 10.1136/bmjopen-2017-019024 [published Online First: 2018/02/27]
15. Lambden S, Laterre PF, Levy MM, et al. The SOFA score-development, utility and challenges of accurate assessment in clinical trials. *Crit Care* 2019;23(1):374. doi: 10.1186/s13054-019-2663-7 [published Online First: 2019/11/30]
16. Lim WS, van der Eerden MM, Laing R, et al. Defining community acquired pneumonia severity on presentation to hospital: an international derivation and validation study. *Thorax* 2003;58(5):377-82. doi: 10.1136/thorax.58.5.377 [published Online First: 2003/05/03]
17. Adhikari SP, Meng S, Wu YJ, et al. Epidemiology, causes, clinical manifestation and diagnosis, prevention and control of coronavirus disease (COVID-19) during the early outbreak period: a

- scoping review. *Infect Dis Poverty* 2020;9(1):29. doi: 10.1186/s40249-020-00646-x [published Online First: 2020/03/19]
18. Afessa B, Keegan MT, Gajic O, et al. The influence of missing components of the Acute Physiology Score of APACHE III on the measurement of ICU performance. *Intensive Care Med* 2005;31(11):1537-43. doi: 10.1007/s00134-005-2751-9 [published Online First: 2005/10/06]
 19. Jentzer JC, Bennett C, Wiley BM, et al. Predictive value of individual Sequential Organ Failure Assessment sub-scores for mortality in the cardiac intensive care unit. *PLoS One* 2019;14(5):e0216177. doi: 10.1371/journal.pone.0216177 [published Online First: 2019/05/21]
 20. Lo R, Leung LY, Brabrand M, et al. qSOFA is a Poor Predictor of Short-Term Mortality in All Patients: A Systematic Review of 410,000 Patients. *Journal of clinical medicine* 2019;8(1):61. doi: <https://doi.org/10.3390/jcm8010061>
 21. Yandiola PPE, Capelastegui A, Quintana J, et al. Prospective comparison of severity scores for predicting clinically relevant outcomes for patients hospitalized with community-acquired pneumonia. *Chest* 2009;135(6):1572-79. doi: 10.1378/chest.08-2179 [published Online First: 2009/01/15]
 22. Charles PG, Wolfe R, Whitby M, et al. SMART-COP: a tool for predicting the need for intensive respiratory or vasopressor support in community-acquired pneumonia. *Clin Infect Dis* 2008;47(3):375-84. doi: 10.1086/589754 [published Online First: 2008/06/19]
 23. Kim MA, Park JS, Lee CW, et al. Pneumonia severity index in viral community acquired pneumonia in adults. *PLoS One* 2019;14(3):e0210102. doi: 10.1371/journal.pone.0210102 [published Online First: 2019/03/07]
 24. Moher D, Liberati A, Tetzlaff J, et al. Preferred reporting items for systematic reviews and meta-analyses: the PRISMA statement. *Int J Surg* 2010;8(5):336-41. doi: 10.1016/j.ijssu.2010.02.007 [published Online First: 2010/02/23]
 25. Database of publications on coronavirus disease (COVID-19) Geneva: World Health Organization; 2020 [Available from: <https://www.who.int/emergencies/diseases/novel-coronavirus-2019/global-research-on-novel-coronavirus-2019-ncov> accessed 03/30/2020.
 26. Twomey M, Wallis LA, Myers JE. Limitations in validating emergency department triage scales. *Emerg Med J* 2007;24(7):477-9. doi: 10.1136/emj.2007.046383 [published Online First: 2007/06/22]
 27. Guyatt GH, Oxman AD, Vist GE, et al. GRADE: an emerging consensus on rating quality of evidence and strength of recommendations. *BMJ* 2008;336(7650):924-6. doi: 10.1136/bmj.39489.470347.AD [published Online First: 2008/04/26]
 28. Liu K, Chen Y, Lin R, et al. Clinical features of COVID-19 in elderly patients: A comparison with young and middle-aged patients. *J Infect* 2020 doi: 10.1016/j.jinf.2020.03.005 [published Online First: 2020/03/17]
 29. Shi Y, Yu X, Zhao H, et al. Host susceptibility to severe COVID-19 and establishment of a host risk score: findings of 487 cases outside Wuhan. *Crit Care* 2020;24(1):108. doi: 10.1186/s13054-020-2833-7 [published Online First: 2020/03/20]
 30. Chen J, Qi T, Liu L, et al. Clinical progression of patients with COVID-19 in Shanghai, China. *J Infect* 2020 doi: 10.1016/j.jinf.2020.03.004 [published Online First: 2020/03/17]
 31. ICNARC report on COVID-19 in critical care London: Intensive Care National Audit and Research Centre 2020.
 32. Lin M, Beliaevsky A, Katz K, et al. What can early Canadian experience screening for COVID-19 teach us about how to prepare for a pandemic? *CMAJ* 2020 doi: 10.1503/cmaj.200305 [published Online First: 2020/03/08]

33. Clinical management of severe acute respiratory infection (SARI) when COVID-19 disease is suspected. Interim guidance, 13 March 2020. . Geneva: World Health Organization, 2020.
34. Macfarlane J. CURB-65 Score for Pneumonia Severity 2020 [Available from: <https://www.mdcalc.com/curb-65-score-pneumonia-severity>].
35. Krishnamoorthy V, Vavilala MS, Mock CN. The need for ventilators in the developing world: An opportunity to improve care and save lives. *J Glob Health* 2014;4(1):010303. doi: 10.7189/jogh.04.010303 [published Online First: 2014/07/01]
36. Ginsburg AS, Van Cleve WC, I. W. Thompson IWM, et al. Oxygen and Pulse Oximetry in Childhood Pneumonia: A Survey of Healthcare Providers in Resource-limited Settings. *Journal of Tropical Pediatrics* 2011;58(5):389–93. doi: 10.1093/tropej/fmr103
37. Murthy S, Leligdowicz A, Adhikari NK. Intensive Care Unit Capacity in Low-Income Countries: A Systematic Review. *PLoS One* 2015;10(1) doi: 10.1371/journal.pone.0116949
38. Emanuel EJ, Persad G, Upshur R, et al. Fair Allocation of Scarce Medical Resources in the Time of Covid-19. *N Engl J Med* 2020 doi: 10.1056/NEJMs2005114 [published Online First: 2020/03/24]
39. Zhou F, Yu T, Du R, et al. Clinical course and risk factors for mortality of adult inpatients with COVID-19 in Wuhan, China: a retrospective cohort study. *Lancet* 2020 doi: 10.1016/S0140-6736(20)30566-3 [published Online First: 2020/03/15]
40. Huang C, Wang Y, Li X, et al. Clinical features of patients infected with 2019 novel coronavirus in Wuhan, China. *Lancet* 2020;395(10223):497-506. doi: 10.1016/S0140-6736(20)30183-5 [published Online First: 2020/01/28]
41. Peng YD, Meng K, Guan HQ, et al. [Clinical characteristics and outcomes of 112 cardiovascular disease patients infected by 2019-nCoV]. *Zhonghua Xin Xue Guan Bing Za Zhi* 2020;48(0):E004. doi: 10.3760/cma.j.cn112148-20200220-00105 [published Online First: 2020/03/04]
42. Liu Y, Yang Y, Zhang C, et al. Clinical and biochemical indexes from 2019-nCoV infected patients linked to viral loads and lung injury. *Sci China Life Sci* 2020;63(3):364-74. doi: 10.1007/s11427-020-1643-8 [published Online First: 2020/02/13]
43. Zheng H, Zhang M, Yang C, et al. Elevated exhaustion levels and reduced functional diversity of T cells in peripheral blood may predict severe progression in COVID-19 patients. *Cell Mol Immunol* 2020 doi: 10.1038/s41423-020-0401-3
44. Lei C, Huiguo L, Wei L, et al. Analysis of clinical characteristics of 29 cases of new type coronavirus pneumonia. *Chinese Journal of Tuberculosis and Respiratory Diseases* 2020 doi: 10.3760 / cma.j.issn.1001-0939.2020.0005
45. Min L, Min L, Peng H, et al. Analysis of clinical characteristics of 30 cases of new coronavirus pneumonia in medical staff. *Chinese Journal of Tuberculosis and Respiratory Diseases* 2020;43 doi: 10.3760 / cma.j.issn.1001-0939.2020.0016
46. Zhou B, She J, Wang Y, et al. The clinical characteristics of myocardial injury in severe and very severe patients with 2019 Novel Coronavirus Disease. *Journal of Infection* 2020 doi: 10.1016/j.jinf.2020.03.021
47. Gao Y, Li T, Han M, et al. Diagnostic Utility of Clinical Laboratory Data Determinations for Patients with the Severe COVID-19. *J Med Virol* 2020 doi: 10.1002/jmv.25770 [published Online First: 2020/03/18]
48. Shen C, Yu N, Cai S, et al. Quantitative computed tomography analysis for stratifying the severity of Coronavirus Disease 2019. *Journal of Pharmaceutical Analysis* 2020 doi: 10.1016/j.jpha.2020.03.004

49. Zhou W, Zhong Z, Xie X. Relation between chest CT findings and clinical conditions of Coronavirus Disease (COVID-19) pneumonia: A multicenter study. *AJR Am J Roentgenol* 2020;3 doi: 10.2214/AJR.20.22976
50. Liang W, Guan W, Chen R, et al. Cancer patients in SARS-CoV-2 infection: a nationwide analysis in China. *Lancet Oncol* 2020;21(3):335-37. doi: 10.1016/S1470-2045(20)30096-6 [published Online First: 2020/02/19]
51. Yuan M, Yin W, Tao Z, et al. Association of radiologic findings with mortality of patients infected with 2019 novel coronavirus in Wuhan, China. *PLoS One* 2020;15(3):e0230548. doi: 10.1371/journal.pone.0230548 [published Online First: 2020/03/20]
52. Liu JL, Y., Xiang P, Pu L, et al. Neutrophil-to-lymphocyte ratio predicts severe illness patients with 2019 Novel Coronavirus in the early stage. *MedRxiv* 2020 doi: 10.1101/2020.02.10.20021584
53. Wang Z, Yang B, Li Q, et al. Clinical Features of 69 Cases with Coronavirus Disease 2019 in Wuhan, China. *Clin Infect Dis* 2020 doi: 10.1093/cid/ciaa272 [published Online First: 2020/03/17]
54. Fan BE, Chong VCL, Chan SSW, et al. Hematologic parameters in patients with COVID-19 infection. *Am J Hematol* 2020 doi: 10.1002/ajh.25774 [published Online First: 2020/03/05]
55. Liu W, Tao ZW, Lei W, et al. Analysis of factors associated with disease outcomes in hospitalized patients with 2019 novel coronavirus disease. *Chin Med J (Engl)* 2020 doi: 10.1097/CM9.0000000000000775 [published Online First: 2020/03/03]
56. Cao J, Hu X, Cheng W, et al. Clinical features and short-term outcomes of 18 patients with coronavirus disease 2019 in intensive care unit. *Intensive Care Med* 2020 doi: 10.1007/s00134-020-05987-7 [published Online First: 2020/03/04]
57. Li K, Wu J, Wu F, et al. The Clinical and Chest CT Features Associated with Severe and Critical COVID-19 Pneumonia. *Invest Radiol* 2020 doi: 10.1097/RLI.0000000000000672 [published Online First: 2020/03/03]
58. Ruan Q, Yang K, Wang W, et al. Clinical predictors of mortality due to COVID-19 based on an analysis of data of 150 patients from Wuhan, China. *Intensive Care Med* 2020 doi: 10.1007/s00134-020-05991-x
59. Wan S, Xiang Y, Fang W, et al. Clinical features and treatment of COVID-19 patients in northeast Chongqing. *J Med Virol* 2020 doi: 10.1002/jmv.25783 [published Online First: 2020/03/22]
60. Wang D, Hu B, Hu C, et al. Clinical Characteristics of 138 Hospitalized Patients With 2019 Novel Coronavirus-Infected Pneumonia in Wuhan, China. *JAMA* 2020 doi: 10.1001/jama.2020.1585 [published Online First: 2020/02/08]
61. Zhang JJ, Dong X, Cao YY, et al. Clinical characteristics of 140 patients infected with SARS-CoV-2 in Wuhan, China. *Allergy* 2020 doi: 10.1111/all.14238 [published Online First: 2020/02/23]
62. Mo P, Xing Y, Xiao Y, et al. Clinical characteristics of refractory COVID-19 pneumonia in Wuhan, China. *Clin Infect Dis* 2020 doi: 10.1093/cid/ciaa270 [published Online First: 2020/03/17]
63. Tang N, Li D, Wang X, et al. Abnormal coagulation parameters are associated with poor prognosis in patients with novel coronavirus pneumonia. *J Thromb Haemost* 2020;18(4):844-47. doi: 10.1111/jth.14768 [published Online First: 2020/02/20]
64. Wu C, Chen X, Cai Y, et al. Risk Factors Associated With Acute Respiratory Distress Syndrome and Death in Patients With Coronavirus Disease 2019 Pneumonia in Wuhan, China. *JAMA Intern Med* 2020 doi: 10.1001/jamainternmed.2020.0994 [published Online First: 2020/03/14]
65. Tian S, Hu N, Lou J, et al. Characteristics of COVID-19 infection in Beijing. *J Infect* 2020;80(4):401-06. doi: 10.1016/j.jinf.2020.02.018 [published Online First: 2020/03/01]
66. Qin C, Zhou L, Hu Z, et al. Dysregulation of immune response in patients with COVID-19 in Wuhan, China. *Clin Infect Dis* 2020 doi: 10.1093/cid/ciaa248 [published Online First: 2020/03/13]

67. Cheng Y, Luo R, Wang K, et al. Kidney disease is associated with in-hospital death of patients with COVID-19. *Kidney International* 2020 doi: 10.1016/j.kint.2020.03.005
68. Tang N, Bai H, Chen X, et al. Anticoagulant treatment is associated with decreased mortality in severe coronavirus disease 2019 patients with coagulopathy. *J Thromb Haemost* 2020 doi: 10.1111/jth.14817
69. Wu J, Li W, Shi X, et al. Early antiviral treatment contributes to alleviate the severity and improve the prognosis of patients with novel coronavirus disease (COVID-19). *J Intern Med* 2020 doi: 10.1111/joim.13063 [published Online First: 2020/03/29]
70. Wan Y, Li J, Shen L, et al. Enteric involvement in hospitalised patients with COVID-19 outside Wuhan. *Lancet Gastroenterol Hepatol* 2020 doi: 10.1016/S2468-1253(20)30118-7 [published Online First: 2020/04/19]
71. Gao L, Jiang D, Wen XS, et al. Prognostic value of NT-proBNP in patients with severe COVID-19. *Respir Res* 2020;21(1):83. doi: 10.1186/s12931-020-01352-w [published Online First: 2020/04/16]
72. Zheng F, Tang W, Li H, et al. Clinical characteristics of 161 cases of corona virus disease 2019 (COVID-19) in Changsha. *Eur Rev Med Pharmacol Sci* 2020;24(6):3404-10. doi: 10.26355/eurrev_202003_20711 [published Online First: 2020/04/10]
73. Cai Q, Huang D, Yu H, et al. Characteristics of Liver Tests in COVID-19 Patients. *J Hepatol* 2020 doi: 10.1016/j.jhep.2020.04.006 [published Online First: 2020/04/17]
74. Du RH, Liang LR, Yang CQ, et al. Predictors of Mortality for Patients with COVID-19 Pneumonia Caused by SARS-CoV-2: A Prospective Cohort Study. *Eur Respir J* 2020 doi: 10.1183/13993003.00524-2020 [published Online First: 2020/04/10]
75. Chen T, Dai Z, Mo P, et al. Clinical characteristics and outcomes of older patients with coronavirus disease 2019 (COVID-19) in Wuhan, China (2019): a single-centered, retrospective study. *J Gerontol A Biol Sci Med Sci* 2020 doi: 10.1093/gerona/glaa089 [published Online First: 2020/04/13]
76. Feng Y, Ling Y, Bai T, et al. COVID-19 with Different Severity: A Multi-center Study of Clinical Features. *Am J Respir Crit Care Med* 2020 doi: 10.1164/rccm.202002-0445OC [published Online First: 2020/04/11]
77. He R, Lu Z, Zhang L, et al. The clinical course and its correlated immune status in COVID-19 pneumonia. *Journal of Clinical Virology* 2020 doi: 10.1016/j.jcv.2020.104361
78. Ji D, Zhang D, Xu J, et al. Prediction for Progression Risk in Patients with COVID-19 Pneumonia: the CALL Score. *Clin Infect Dis* 2020 doi: 10.1093/cid/ciaa414 [published Online First: 2020/04/10]
79. Li X, Xu S, Yu M, et al. Risk factors for severity and mortality in adult COVID-19 inpatients in Wuhan. *J Allergy Clin Immunol* 2020 doi: 10.1016/j.jaci.2020.04.006 [published Online First: 2020/04/16]
80. C C, JT Y, N Z, et al. Analysis of myocardial injury in patients with COVID-19 and association between concomitant cardiovascular diseases and severity of COVID-19. *Chinese Medical Journal* 2020;6(48) doi: 10.3760/cma.j.cn112148-20200225-00123
81. Wang X, Fang J, Zhu Y, et al. Clinical characteristics of non-critically ill patients with novel coronavirus infection (COVID-19) in a Fangcang Hospital. *Clin Microbiol Infect* 2020 doi: 10.1016/j.cmi.2020.03.032 [published Online First: 2020/04/07]
82. Zhou Y, Zhang Z, Tian J, et al. Risk factors associated with disease progression in a cohort of patients infected with the 2019 novel coronavirus. *Ann Palliat Med* 2020 doi: 10.21037/apm.2020.03.26 [published Online First: 2020/04/03]

83. Cao J, Tu WJ, Cheng W, et al. Clinical Features and Short-term Outcomes of 102 Patients with Corona Virus Disease 2019 in Wuhan, China. *Clin Infect Dis* 2020 doi: 10.1093/cid/ciaa243 [published Online First: 2020/04/03]
84. Chu J, Yang N, Wei Y, et al. Clinical characteristics of 54 medical staff with COVID-19: A retrospective study in a single center in Wuhan, China. *J Med Virol* 2020 doi: 10.1002/jmv.25793 [published Online First: 2020/03/31]
85. Li Y-K, Peng S, Li L-Q, et al. Clinical and Transmission Characteristics of Covid-19 ,Ä A Retrospective Study of 25 Cases from a Single Thoracic Surgery Department. *Curr Med Sci* 2020;30:1-6. doi: 10.1007/s11596-020-2176-2
86. Al-Rousan N, Al-Najjar H. Data Analysis of Coronavirus CoVID-19 Epidemic in South Korea Based on Recovered and Death Cases. *J Med Virol* 2020 doi: 10.1002/jmv.25850 [published Online First: 2020/04/10]
87. Lighter J, Phillips M, Hochman S, et al. Obesity in patients younger than 60 years is a risk factor for Covid-19 hospital admission. *Clinical Infectious Diseases* 2020 doi: 10.1093/cid/ciaa415
88. Petrilli C, Jones S, Yang J, et al. Factors associated with hospitalization and critical illness among 4,103 patients with COVID-19 disease in New York City. 2020 doi: 10.1101/2020.04.08.20057794
89. Deng Q, Hu B, Zhang Y, et al. Suspected myocardial injury in patients with COVID-19: Evidence from front-line clinical observation in Wuhan, China. *Int J Cardiol* 2020 doi: 10.1016/j.ijcard.2020.03.087 [published Online First: 2020/04/16]
90. Lei S, Jiang F, Su W, et al. Clinical characteristics and outcomes of patients undergoing surgeries during the incubation period of COVID-19 infection. *EClinicalMedicine* 2020:100331. doi: 10.1016/j.eclinm.2020.100331 [published Online First: 2020/04/16]
91. Chen R, Liang W, Jiang M, et al. Risk factors of fatal outcome in hospitalized subjects with coronavirus disease 2019 from a nationwide analysis in China. *Chest* 2020 doi: 10.1016/j.chest.2020.04.010 [published Online First: 2020/04/19]
92. Wang L, He WB, Yu XM, et al. [Prognostic value of myocardial injury in patients with COVID-19]. *Zhonghua Yan Ke Za Zhi* 2020;56(0):E009. doi: 10.3760/cma.j.cn112148-20200313-00202 [published Online First: 2020/04/15]
93. Qian ZP, Mei X, Zhang YY, et al. [Analysis of baseline liver biochemical parameters in 324 cases with novel coronavirus pneumonia in Shanghai area]. *Zhonghua Gan Zang Bing Za Zhi* 2020;28(0):E005. doi: 10.3760/cma.j.cn501113-20200229-00076 [published Online First: 2020/04/10]
94. Simonnet A, Chetboun M, Poissy J, et al. High prevalence of obesity in severe acute respiratory syndrome coronavirus-2 (SARS-CoV-2) requiring invasive mechanical ventilation. *Obesity (Silver Spring)* 2020 doi: 10.1002/oby.22831 [published Online First: 2020/04/10]
95. Grasselli G, Zangrillo A, Zanella A, et al. Baseline Characteristics and Outcomes of 1591 Patients Infected With SARS-CoV-2 Admitted to ICUs of the Lombardy Region, Italy. *JAMA* 2020 doi: 10.1001/jama.2020.5394 [published Online First: 2020/04/07]
96. Yun L, Lin Y, Qian Z, et al. Clinical analysis on risk factors for COVID-19 patients becoming severe patients. *Chinese Journal of Infectious Diseases* 2020;38 doi: 10.3760/cma.j.cn311365-20200211-00055
97. Niu S, Tian S, Lou J, et al. Clinical Characteristics of Older Patients Infected with COVID-19: A Descriptive Study. *Archives of Gerontology and Geriatrics* 2020 doi: 10.1016/j.archger.2020.104058
98. Interpretation of pneumonia diagnosis and treatment plan for new coronavirus infection (trial version 5): National Health Commission of the People's Republic of China [Available from: <http://bgs.satcm.gov.cn/zhengcewenjian/2020-02-06/12848.html>].

Figure 1: PRISMA flow diagram

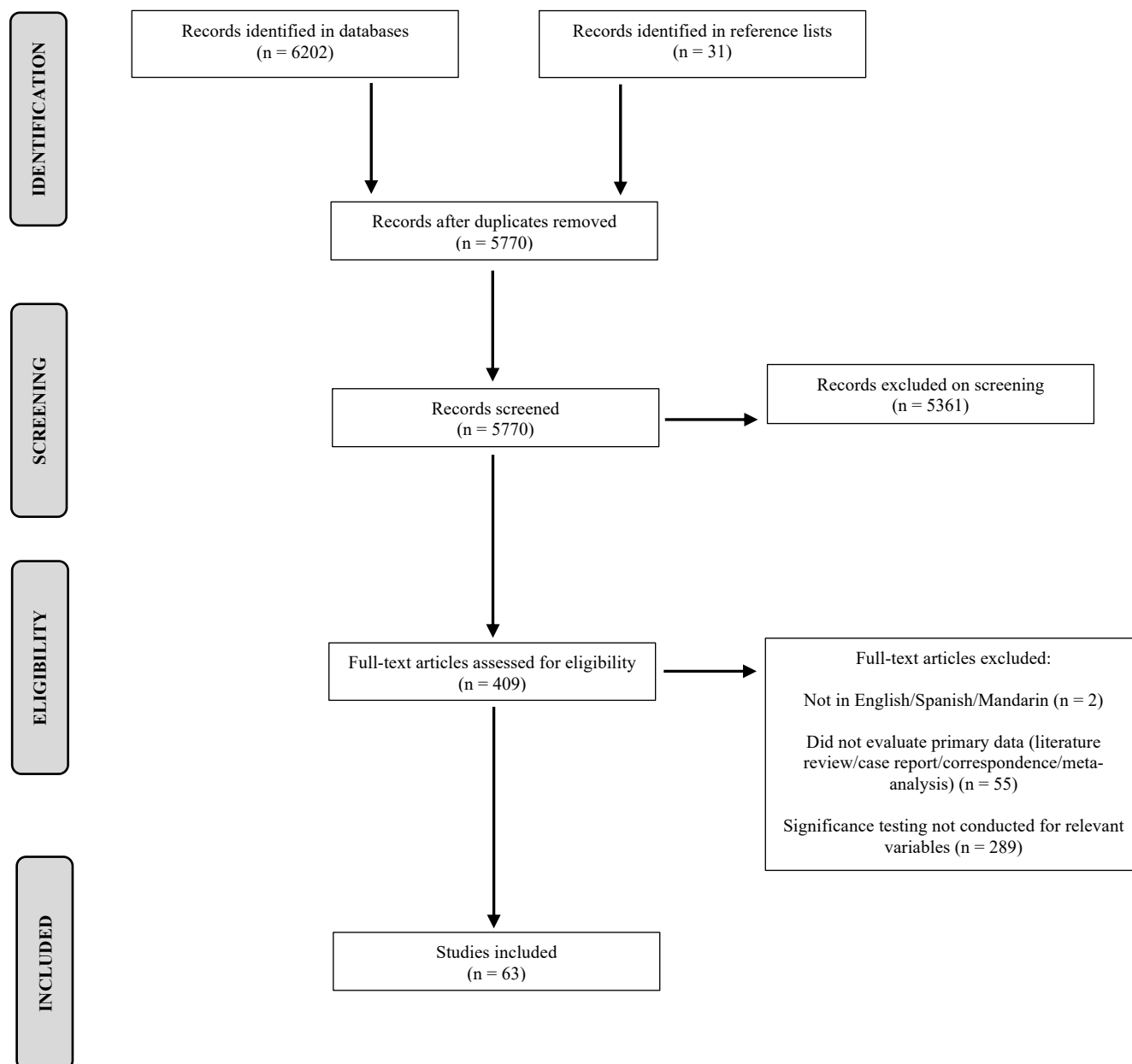


Table 1. Study characteristics

Title	First author	Year	GRADE*	Location	Design	Population	Gender (% male)	Median age	No. severe cases	Definition of severe illness	No. variables reported on** (n)	No. variables reported as significant** (n)
Clinical features of patients infected with 2019 novel coronavirus in Wuhan, China ⁴⁰	Huang	2020	Low quality	Wuhan, China	Prospective cohort	41 adult patients with nCoV-19 admitted to a designated Wuhan Hospital from 16/12/19 - 2/1/20	73	49	13	ICU admission	42	16
Clinical characteristics and outcomes of 112 cardiovascular disease patients infected by 2019-nCoV ⁴¹	Peng	2020	Low quality	Wuhan, China	Retrospective cohort	112 adult patients with nCoV-19 combined with CVD admitted to Western Hospital of Wuhan Medical College from 20/1/2020 - 15/2/2020	47	62	16	NHC - critical	30	6
Clinical and biochemical indexes from 2019-nCoV infected patients linked to viral loads and lung injury ⁴²	Liu	2020	Low quality	Shenzhen, China	Retrospective cohort	12 patients with nCoV-19 admitted to in Shenzhen Third People's Hospital through 21/1/20	67	62	8	NHC - severe & critical	8	8
Elevated exhaustion levels and reduced functional diversity of T cells in peripheral blood may predict severe progression in COVID-19 patients ⁴³	Zheng	2020	Low quality	Kunming, China	Retrospective cohort	16 patients with nCoV-19 admitted to Yunnan Provincial Hospital of ID	56	Not reported	6	No specific definition of severity provided	7	5
Analysis of clinical characteristics of 29 cases of new type coronavirus pneumonia ⁴⁴	Chen	2020	Low quality	Wuhan, China	Retrospective cohort	29 patients with nCoV-19 admitted to Tongji Hospital in January 2020	72	56	14	NHC - severe & critical	9	2
Analysis of clinical characteristics of 30 cases of new coronavirus pneumonia in medical staff ⁴⁵	Liu	2020	Low quality	Wuhan, China	Retrospective cohort	30 adult hospital staff workers with nCoV-19 admitted to Jiangnan Hospital from 10/1/20-3/10/2020	50	35	4	NHC - severe & critical	8	8
The clinical characteristics of myocardial injury in severe and very severe patients with 2019 Novel Coronavirus Disease ⁴⁶	Zhou	2020	Low quality	Wuhan, China	Retrospective cohort	34 patients with nCoV-19 admitted to Tongji Medical College from 5/2/20-13/2/20	46	50	8	NHC - critical	11	3
Diagnostic utility of clinical laboratory data determinations for patients with the severe COVID-19 ⁴⁷	Gao	2020	Low quality	Fuyang, China	Retrospective cohort	43 adult patients with nCoV-19 at Fuyang Second People's hospital from 23/1/20-2/2/20	60	44	15	NHC - severe & critical	25	8

Quantitative computed tomography analysis for stratifying the severity of Coronavirus Disease 2019 ⁴⁸	Shen	2020	Low quality	China	Retrospective cohort	44 adult patients with nCoV-19 with CT images from 22/1/20-7/2/20	47	Not reported	9	NHC - severe & critical	2	1
Relation between chest CT findings and clinical conditions of Coronavirus Disease (COVID-19) pneumonia: A multicenter study ⁴⁹	Zhao	2020	Low quality	Hunan, China	Retrospective cohort	101 adult patients with nCoV-19 pneumonia from four institutions in Hunan	55	43	14	NHC - severe & critical	4	2
Cancer patients in SARS-CoV-2 infection: a nationwide analysis in China ⁵⁰	Liang	2020	Low quality	China	Prospective cohort	1,590 adult patients with nCoV-19 acute respiratory disease admitted to a hospital in China	Not reported	Not reported	131	ICU admission, mech ventilation, mortality	1	1
Association of radiologic findings with mortality of patients infected with 2019 novel coronavirus in Wuhan, China ⁵¹	Yuan	2020	Low quality	Wuhan, China	Retrospective cohort	27 consecutive adult patients with nCoV-19 admitted to Central Hospital of Wuhan	44	60	10	Mortality	13	6
Neutrophil-to-lymphocyte ratio predicts severe illness patients with 2019 Novel Coronavirus in the early stage ⁵²	Jingyuan	2020	Low quality	Beijing, China	Prospective cohort	61 adult patients with nCoV-19 infection treated at Beijing Ditan Hospital from 13/1/20-31/1/20	51	40	17	NHC - severe & critical	35	8
Clinical features of 69 cases with Coronavirus Disease 2019 in Wuhan, China ⁵³	Wang	2020	Low quality	Wuhan, China	Retrospective cohort	69 adult patients with nCoV-19 hospitalized in Union Hospital from 16/1/20-29/1/20	46	42	55	Oxygen requirement <90%	35	13
Hematologic parameters in patients with COVID-19 infection ⁵⁴	Fan	2020	Low quality	Singapore	Retrospective cohort	69 adult patients with nCoV-19 treated at the National Centre for Infectious Diseases in Singapore through 28/2/20	55	41	9	ICU admission	10	3
Analysis of factors associated with disease outcomes in hospitalized patients with 2019 novel coronavirus disease ⁵⁵	Liu	2020	Low quality	Wuhan, China	Retrospective cohort	78 adult patients with nCoV-19 admitted to three tertiary hospitals in Wuhan from 30/12/19-15/1/20	50	38	8	Progression in disease state from common to severe, severe to critical or critical to death as defined by NHC	26	5
Clinical features and short-term outcomes of 18 patients with corona virus disease 2019 in intensive care unit ⁵⁶	Cao	2020	Low quality	Wuhan, China	Retrospective case series	102 adult patients with nCoV-19 admitted to Wuhan University Zhongnan Hospital from 3/1/20-1/2/20	51	54	18	ICU admission	19	3

The clinical and Chest CT features associated with severe and critical COVID-19 pneumonia ⁵⁷	Li	2020	Low quality	Chongqing, China	Retrospective cohort	83 adult patients with nCoV-19 and abnormal findings on CT in Chongqing Medical University affiliated hospitals from 1/1/20-29/2/20	53	45.5	25	NHC - severe & critical	34	14
Clinical predictors of mortality due to COVID-19 based on an analysis of data of 150 patients from Wuhan, China ⁵⁸	Ruan	2020	Low quality	Wuhan, China	Retrospective cohort	150 adult patients with nCoV-19 at Jinyintan and Tongji Hospitals	72	57	68	Mortality	34	16
Clinical features and treatment of COVID-19 patients in Northeast Chongqing ⁵⁹	Wan	2020	Low quality	Chongqing, China	Retrospective cohort	135 adult patients with nCoV-19 hospitalized in Chongqing University Three Gorges Hospital from 23/1/20-8/2/20	53	47	40	NHC - severe & critical	17	15
Clinical characteristics of 138 hospitalized patients with 2019 novel coronavirus-infected pneumonia in Wuhan, China ⁶⁰	Wang	2020	Low quality	Wuhan, China	Retrospective case series	138 consecutive adult patients with nCoV-19 hospitalized in Zhongnan Hospital of Wuhan University from 1/1-28/1/20	54.3	56	36	ICU admission	42	22
Clinical characteristics of 140 patients infected by SARS-CoV-2 in Wuhan, China ⁶¹	Zhang	2020	Low quality	Wuhan, China	Retrospective cohort	140 adult patients with nCoV-19 infection No. 7 Hospital of Wuhan from 16/1/20-3/2/20	50.7	57	59	NHC - severe	20	2
Clinical characteristics of refractory COVID-19 pneumonia in Wuhan, China ⁶²	Pingzheng	2020	Low quality	Wuhan, China	Retrospective cohort	155 consecutive adult patients with nCoV-19 infection at Zhongnan Hospital of Wuhan University from 1/1/20-5/2/20	55.5	54	85	Hospital stay <10 days	15	12
Abnormal coagulation parameters are associated with poor prognosis in patients with novel coronavirus pneumonia ⁶³	Tang	2020	Low quality	Wuhan, China	Retrospective cohort	183 adult patients with nCoV-19 infection at Tongji Hospital 1/1/20-3/2/20	53.6	54.1	21	Mortality	9	5
Clinical course and risk factors for mortality of adult inpatients with COVID-19 in Wuhan, China: a retrospective cohort study ³⁹	Zhou	2020	Low quality	Wuhan, China	Retrospective cohort	191 patients with nCoV-19 infection at Jinyintan Hospital and Wuhan Pulmonary Hospital through 20/1/20	62	56	54	Mortality	37	24
Risk factors associated with Acute Respiratory Distress Syndrome and death in patients with Coronavirus Disease 2019 pneumonia in Wuhan, China ⁶⁴	Wu	2020	Low quality	Wuhan, China	Retrospective cohort	201 adult patients with nCoV-19 infection at Wuhan Jinyintan Hospital from 25/12/19-26/1/20	63.7	51	84	Development of Acute Respiratory Distress Syndrome	34	23
Clinical progression of patients with COVID-19 in Shanghai, China ³⁰	Chen	2020	Low quality	Shanghai, China	Retrospective cohort	249 adult patients with nCoV-19 at Shanghai Public Health Clinical Center from 20/1/20-6/2/20	50.6	51	22	ICU admission	13	1

Characteristics of COVID-19 infection in Beijing ⁶⁵	Tian	2020	Low quality	Beijing, China	Retrospective cohort	262 adult patients with nCoV-19 transferred to designated COVID hospitals by Beijing EMS from 20/1/20-10/2/20	48.5	47.5	46	Dyspnea or respiratory failure	7	1
Dysregulation of immune response in patients with COVID-19 in Wuhan, China ⁶⁶	Chuan	2020	Low quality	Wuhan, China	Retrospective cohort	452 adult patients with 2019-nCoV infection at Tongji Hospital from 10/1/20-12/2/20	52	58	286	NHC - severe	55	23
Host susceptibility to severe COVID-19 and establishment of a host risk score: findings of 487 cases outside Wuhan ²⁹	Shi	2020	Low quality	Zhejiang Province, China	Retrospective cohort	487 adult patients with nCoV-19 in Zhejiang Province through 11/2/20	53.2	46	49	Severe, "pneumonia that can be severe and characterized by fever, cough, dyspnea, bilateral pulmonary infiltrates, and acute respiratory injury"	8	6
Kidney disease is associated with in-hospital death of patients with COVID-19 ⁶⁷	Cheng	2020	Moderate quality	Wuhan, China	Prospective cohort	701 adult patients with nCoV-19 infection treated at Tongji Hospital from 28/1/20-11/2/20	52	63	113	Mortality	17	11
Anticoagulant treatment is associated with decreased mortality in severe coronavirus disease 2019 patients with coagulopathy ⁶⁸	Tang	2020	Low quality	Wuhan, China	Retrospective cohort	449 consecutive adult patients with nCoV-19 infection treated at Tongji Hospital from 1/1/20-13/2/20	59.7	65.1	134	Mortality	7	6
Early antiviral treatment contributes to alleviate the severity and improve the prognosis of patients with novel coronavirus disease (COVID-19) ⁶⁹	Wu	2020	Low quality	Jiangsu & Anhui Provinces, China	Retrospective cohort	280 patients with nCoV-19 infection treated at four hospitals in the Jiangsu and Anhui from 20/1/20-19/2/20	53.93	43.12	83	NHC - severe & critical	17	32
Clinical features of COVID-19 in elderly patients: A comparison with young and middle-aged patients ²⁸	Liu	2020	Low quality	Hainan, China	Retrospective cohort	56 patients with nCoV-19 infection treated at Hainan Provincial People's Hospital from 15/1-18/2/20	55.4	53.75	6	Mechanical ventilation	1	1
Enteric involvement in hospitalised patients with COVID-19 outside Wuhan ⁷⁰	Wan	2020	Low quality	Guangdong, Hubei, and Jiangxi Provinces, China	Retrospective cohort	232 adult patients with nCoV-19 infection admitted to 14 Chinese hospitals from 19/1/2020 - 6/3/2020	55.6	47.5	61	Vague severe	1	1

Prognostic value of NT-proBNP in patients with severe COVID-19 ⁷¹	Gao	2020	Low quality	Wuhan, China	Retrospective cohort	54 consecutive adult patients with severe nCoV-19 pneumonia admitted to Hubei General Hospital (n.d.).	44.4	60.4	102	Mortality	1	1
Clinical characteristics of 161 cases of corona virus disease 2019 (COVID-19) in Changsha ⁷²	Zheng	2020	Low quality	Hunan, China	Retrospective cohort	161 adult patients with nCoV-19 infection admitted to the North Hospital of Changsha first Hospital (Changsha Public Health treatment Center) from 17/1/2020 - 7/2/2020	49.7	45	30	Vague severe	29	12
Characteristics of Liver Tests in COVID-19 Patients ⁷³	Cai	2020	Low quality	Shenzhen, China	Prospective cohort	417 adult patients with nCoV-19 infection admitted to the Third People's Hospital of Shenzhen from 11/1/2020 - 21/2/2020	47.5	47	91	NHC - severe & critical	5	4
Predictors of Mortality for Patients with COVID-19 Pneumonia Caused by SARS-CoV-2: A Prospective Cohort Study ⁷⁴	Du	2020	Low quality	Wuhan, China	Prospective cohort	179 consecutive adult patients with nCoV-19 infection admitted to Wuhan Pulmonary Hospital from 25/12/19 - 7/3/2020	54.2	57.6	21	Mortality	38	18
Clinical characteristics and outcomes of older patients with coronavirus disease 2019 (COVID-19) in Wuhan, China (2019): a single-centered, retrospective study ⁷⁵	Chen	2020	Low quality	Wuhan, China	Retrospective cohort	203 older adult patients with nCoV-19 infection admitted to Zhongnan Hospital of Wuhan University from 01/1-10/02/2020	53.2	54	107	NHC - severe & critical	1	1
COVID-19 with Different Severity: A Multi-center Study of Clinical Features ⁷⁶	Feng	2020	Low quality	Wuhan, Shanghai and Anhui Provinces, China	Retrospective cohort	476 adult patients with nCoV-19 infection admitted to three hospitals in China between 01/1-15/02/2020	56.9	53	124	NHC - severe & critical	46	32
The clinical course and its correlated immune status in COVID-19 pneumonia ⁷⁷	He	2020	Low quality	Wuhan, China	Retrospective cohort	204 adult patients with nCoV-19 infection admitted to Renmin Hospital of Wuhan University between 10/1.-13/02/2020	38.7	49	69	NHC - severe & critical	45	22

Prediction for Progression Risk in Patients with COVID-19 Pneumonia: the CALL Score ⁷⁸	Ji	2020	Low quality	Fuyang, China	Retrospective cohort	208 consecutive adult patients with nCoV-19 infection admitted to Fuyang Second People's Hospital or Fifth Medical Center of Chinese PLA General Hospital between 20/01-22/02/2020	56.2	44	40	Progression to severe COVID-19 defined as at least one of the followings, respiratory rate ≥ 30 breaths/min, resting oxygen saturation $\leq 93\%$, PaO ₂ /FiO ₂ ≤ 300 mmHg or requirement of mechanical ventilation OR worsening of lung CT findings during the observation period.	10	5
Risk factors for severity and mortality in adult COVID-19 inpatients in Wuhan ⁷⁹	Li	2020	Low quality	Wuhan, China	Retrospective cohort	548 adult patients with nCoV-19 infection admitted to Tongji Hospital from 26/1 - 5/02/2020 with follow up until 03/03/2020	50.9	60	269	NHC - severe & critical	47	30
Analysis of myocardial injury in patients with COVID-19 and association between concomitant cardiovascular diseases and severity of COVID-19 ⁸⁰	Chen	2020	Low quality	Wuhan, China	Retrospective cohort	150 adult patients with nCoV-19 infection admitted to the fever wards Tongji Hospitals from January 2019 to February 2020	Not reported	59	24	NHC - severe & critical	9	7
Clinical characteristics of non-critically ill patients with novel coronavirus infection (COVID-19) in a Fangcang Hospital ⁸¹	Wang	2020	Low quality	Wuhan, China	Retrospective cohort	1012 non-critically ill adult patients with nCoV-19 infection admitted to Dongxihu Fangcang Hospital between 07/02-12/02/2020	51.8	50	100	Deterioration of COVID-19 defined as at least one of the following: (a) symptoms persisted or worsened for >7 days; (b) respiratory rate ≥ 30 or blood oxygen saturation 93% , at rest; (c) pulmonary imaging showed that the lesions progressed $>50\%$ within 48 hours; or (d) deterioration of co-morbidities or complications mentioned in items (f) to (i) in manuscript.	23	11

Risk factors associated with disease progression in a cohort of patients infected with the 2019 novel coronavirus ⁸²	Zhou	2020	Low quality	Nanchang, China	Retrospective cohort	17 adult patients with nCoV-19 infection admitted to the Ninth Hospital of Nanchang between 28/01-06/02/2020	35.3	41.5	5	Aggravation from admission: increased body temperature, more serious respiratory systems and enlarging CT lung lesions	14	1
Clinical Features and Short-term Outcomes of 102 Patients with Corona Virus Disease 2019 in Wuhan, China ⁸³	Cao	2020	Low quality	Wuhan, China	Retrospective cohort	102 adult patients with nCoV-19 infection admitted to Wuhan University Zhongnan between 03/01-01/02/2020	51	54	17	Mortality	16	6
Clinical Characteristics of 54 medical staff with COVID-19: A retrospective study in a single center in Wuhan, China ⁸⁴	Chu	2020	Low quality	Wuhan, China	Retrospective cohort	54 adult medical staff with nCoV-19 infection from Tongji Hospital between 07/01-11/02/2020	66.7	47	43	NHC - severe & critical	7	2
Clinical and Transmission Characteristics of Covid-19 - A Retrospective Study of 25 Cases from a Single Thoracic Surgery Department ⁸⁵	Li	2020	Low quality	Wuhan, China	Retrospective cohort	25 adult patients with nCoV-19 infection from Tongji Hospital's Department of Thoracic Surgery, including 13 admitted patients and 12 healthcare staff, from 01/01-20/02/2020	76.9	60.2	9	NHC - severe & critical	22	2
Data Analysis of Coronavirus CoVID-19 Epidemic in South Korea Based on Recovered and Death Cases ⁸⁶	Al-Rousan	2020	Low quality	South Korea	Retrospective cohort	2711 patients with nCoV19 infection with data entered into the Korea Centers for Disease Control and Prevention from 20/01-29/03	Not reported	Not reported	9	Mortality	2	2
Obesity in patients younger than 60 years is a risk factor for Covid-19 hospital admission ⁸⁷	Lighter	2020	Low quality	New York, USA	Retrospective cohort	3615 symptomatic adult patients with nCoV-19 infection who presented to New York University hospital system from 04/03 - 04/04/2020	Not reported	Not reported	431	ICU admission or invasive ventilator documentation in electronic health record	1	1
Factors associated with hospitalization and critical illness among 4,103 patients with COVID-19 disease in New York City ⁸⁸	Petrilli	2020	Low quality	New York, USA	Cross-sectional analysis	4103 patients with nCoV-19 infection treated within New York University Langone Health inpatient and outpatient systems between 01/03-02/04 with follow up through 07/04.	50.5	52	650	ICU admission or mechanical ventilation or discharge to hospice or death	17	12

Suspected myocardial injury in patients with COVID-19: Evidence from front-line clinical observation in Wuhan, China ⁸⁹	Deng	2020	Low quality	Wuhan, China	Retrospective cohort	112 adult patients with nCoV-19 infection admitted to Renmin Hospital of Wuhan University with symptom onset from 06/01-20/02/2020	50.9	65	67	NHC - severe & critical	25	16
Clinical characteristics and outcomes of patients undergoing surgeries during the incubation period of COVID-19 infection ⁹⁰	Lei	2020	Low quality	Wuhan, China	Retrospective cohort	34 adult patients who underwent elective surgeries and developed nCoV-19 pneumonia post-operatively with abnormal findings on chest CT at Renmin Hospital, Zhongnan Hospital, Tongji Hospital and Central Hospital from 1/1-05/02/2020	41.2	55	15	ICU admission	21	4
Risk factors of fatal outcome in hospitalized subjects with coronavirus disease 2019 from a nationwide analysis in China ⁹¹	Chen	2020	Low quality	China	Retrospective cohort	1590 adult patients with nCoV-19 infection admitted to 575 hospitals throughout China from December 2019 to 31/1/2020	Not reported	Not reported	50	Mortality	7	5
Prognostic value of myocardial injury in patients with COVID-19 ⁹²	Wang	2020	Low quality	Wuhan, China	Retrospective cohort	202 adult patients with nCoV-19 infection admitted to People's Hospital of Wuhan University from 31/1-05/02/2020	43.6	63	33	Mortality	21	11
Analysis of baseline liver biochemical parameters in 324 cases with novel coronavirus pneumonia in Shanghai area ⁹³	Qian	2020	Low quality	Shanghai, China	Retrospective cohort	324 adult patients with nCoV-19 pneumonia admitted to Shanghai Public Health Clinical Center from 20/1-24/2/20	51.5	51	26	NHC - severe & critical	12	7
High prevalence of obesity in severe acute respiratory syndrome coronavirus-2 (SARS-CoV-2) requiring invasive mechanical ventilation ⁹⁴	Simonnet	2020	Low quality	Lille, France	Retrospective cohort	124 consecutive adult patients with nCoV-19 infection admitted to Roger Salengro Hospital at "Centre Hospitalier Universitaire de Lille" between 26/2-5/04/2020	73	60	85	Invasive mechanical ventilation	5	3
C-reactive protein correlates with CT findings and predicts severe COVID-19 early	Tan	2020	Low quality	Hunan, China	Retrospective cohort	27 consecutive adult inpatients with nCoV-19 infection admitted to Hunan Provincial People's Hospital from 18/01-10/02/2020	41	48.9	6	NHC - severe	6	3
Baseline Characteristics and Outcomes of 1591 Patients Infected With SARS-CoV-2 Admitted to ICUs of the Lombardy Region, Italy ⁹⁵	Grasselli	2020	Low quality	Lombardy, Italy	Retrospective case series	1591 critically ill patients with nCoV-19 infection admitted from 20/2-18/03/2020	82	63	405	Mortality	2	2

Clinical analysis on risk factors for COVID-19 patients becoming severe patients ⁹⁶	Ling	2020	Low quality	Shanghai, China	Retrospective cohort	292 adult patients with nCoV-19 infection admitted to Shanghai Public Health Clinical Center from 20/1-10/2/2020	52.7	49.9	21	NHC - severe & critical	20	17
Clinical Characteristics of Older Patients Infected with COVID-19: A Descriptive Study ⁹⁷	Niu	2020	Low quality	Beijing, China	Retrospective cohort	141 patients >50yo with nCoV-19 infection transferred from general hospitals to designated hospitals by Beijing EMS from 20/1-29/2/2020	56.7	Not reported	5	Mortality	1	1

* Quality and bias were assessed using the Grading of Recommendations, Assessment, Development and Evaluations (GRADE) framework.²⁷

** Study variables included were those of interest, defined as those related to patient demographics and history, and clinical presentation and investigation.

Table 2. Definitions of illness severity

Illness severity definition	Papers using definition (n (%))
NHC* definition of severe & critical**	21 (33.3)
Inpatient mortality	14 (22.2)
ICU admission	6 (9.5)
NHC* definition of severe**	3 (4.8)
"Severe", without additional description	3 (4.8)
NHC* definition of critical**	2 (3.2)
Acute respiratory distress syndrome	1 (1.6)
Aggravation following admission: increased body temperature, more serious respiratory systems and enlarging CT lung lesions	1 (1.6)
Deterioration of COVID-19 defined as at least one of the following: (a) symptoms persisted or worsened for >7 days; (b) respiratory rate ≥ 30 or blood oxygen saturation $\leq 93\%$, at rest; (c) pulmonary imaging showed that the lesions progressed $>50\%$ within 48 hours; or (d) deterioration of co-morbidities or complications mentioned in items (f) to (i) of manuscript.	1 (1.6)
Dyspnoea or respiratory failure	1 (1.6)
Hospital stay >10 days	1 (1.6)
ICU admission or invasive ventilator documentation in electronic health record	1 (1.6)
ICU admission or mechanical ventilation or death	1 (1.6)
ICU admission or mechanical ventilation or discharge to hospice or death	1 (1.6)
Invasive mechanical ventilation	1 (1.6)
Mechanical ventilation	1 (1.6)
Progression to severe COVID-19 by NHC severe or worsening of lung CT findings during the observation period	1 (1.6)
Progression to NHC definition of severe or critical condition, or death	1 (1.6)
Severe pneumonia characterised by fever, cough, dyspnoea, bilateral pulmonary infiltrates, and acute respiratory injury	1 (1.6)
SpO ₂ <90%	1 (1.6)

*NHC = National Health Committee of People's Republic of China.

NHC stratifies illness into three categories: **mild (slight clinical symptoms, with few or no respiratory symptoms and no pneumonia manifestations on imaging); **severe** (respiratory distress, RR ≥ 30 breaths/min, resting SpO₂ $\leq 93\%$, and PaO₂/FiO₂ ≤ 300 mmHg); and **critical** (respiratory failure, shock, and combined failure of other organs requiring mechanical ventilation and ICU-level care)⁹⁸.

Table 3. Demographic and historical variables significantly associated with illness severity*

Variable	Reported as significant* (n (%))	Papers reporting variable (n)
Demographics		
Age	47 (87)	54
Sex	16 (36)	45
History of comorbidities		
Hypertension	22 (67)	33
Any pre-existing condition	17 (74)	23
Cardiovascular disease	16 (64)	25
Diabetes	13 (41)	32
Body mass index (BMI)	6 (55)	11
Chronic obstructive pulmonary disease (COPD)	6 (32)	19
Stroke	5 (42)	12
Malignancy	5 (26)	19
Chronic kidney disease (CKD)	4 (29)	14
Other respiratory disease	2 (29)	7
Current smoker	1 (9)	11
Tuberculosis	0 (0)	3
Hepatitis/cirrhosis	0 (0)	14
Immunocompromised	0 (0)	2

*Significance denoted by $p < 0.05$ as related to illness severity by definition specified in paper.

Table 4. Clinical presentation variables significantly associated with illness severity*

Variable	Reported as significant* (n (%))	Papers reporting variable (n)
Presenting symptoms		
Dyspnoea/difficulty in breathing/chest tightness	16 (67)	24
Fever and/or chills	6 (23)	26
Sputum production/expectoration	3 (23)	13
Abdominal pain	2 (25)	8
Pharyngalgia/sore throat	1 (13)	8
Anorexia/nausea/vomiting	1 (8)	13
Headache	1 (8)	13
Fatigue	1 (5)	21
Diarrhoea	1 (5)	19
Cough	1 (4)	25
Myalgias	0 (0)	21
Haemoptysis	0 (0)	5
Rhinorrhoea	0 (0)	4
Confusion/altered mental status	0 (0)	1
Initial vitals**		
Respiratory rate	6 (60)	10
SpO2	4 (80)	5
Fever	4 (33)	12
Systolic blood pressure (SBP)	2 (40)	5
Sequential Organ Failure Assessment (SOFA)	1 (100)	1
Quick Sequential Organ Failure Assessment (qSOFA)	1 (100)	1
Heart rate	1 (14)	7
Diastolic blood pressure (DBP)	1 (33)	3

*Significance denoted by $p < 0.05$ as related to illness severity by definition specified in paper.

**No data were available on the predictive value of abnormal auscultation.

Table 5. Clinical investigation variables significantly associated with illness severity*

Variable	Reported as significant* (n (%))	Papers reporting variable (n)
Laboratory findings		
Lymphocyte (absolute count)	24 (77)	31
Lactate dehydrogenase (LDH)	21 (81)	26
C-reactive protein (CRP)	20 (80)	25
D-dimer	18 (86)	21
Procalcitonin	16 (76)	21
Aspartate aminotransferase	15 (60)	25
Neutrophils (absolute count)	13 (68)	19
Leucocytes/White Blood Count (WBC, absolute count)	13 (48)	27
Albumin	12 (75)	16
Total bilirubin	9 (56)	16
Creatinine	9 (45)	20
Alanine aminotransferase (ALT)	9 (35)	26
Interleukin-6	8 (80)	10
Platelets	8 (50)	16
Creatinine kinase-MB	7 (78)	9
Blood urea nitrogen (BUN)	7 (70)	10
Prothrombin time (PT)	6 (50)	12
Ferritin	6 (86)	7
CD8+ T cell markers	6 (75)	8
PaO ₂ /FiO ₂	5 (100)	5
N-terminal b-type natriuretic peptide (NT-proBNP)	5 (100)	5
Blood Glucose	4 (100)	4
Myoglobin	4 (80)	5
Lymphocytes (%)	3 (75)	4
Neutrophils (%)	3 (75)	4
Interleukin-2, Interleukin 2 Receptor (IL-2, IL-2r)	3 (60)	5
Interleukin-10 (IL-10)	3 (60)	5
Erythrocyte Sedimentation Rate (ESR)	3 (27)	11
B-type natriuretic peptide (BNP)	2 (67)	3
Potassium	2 (67)	3
Fibrinogen	2 (50)	4
Tumour necrosis factor alpha (TNF α)	2 (33)	6
Haemoglobin	2 (15)	13
Basophils (%)	1 (100)	1

Eosinophils (%)	1 (100)	1
Fibrin Degradation Product	1 (100)	1
Granzyme B	1 (100)	1
Leucocytes/White Blood Count (WBC, %)	1 (100)	1
Perforin	1 (100)	1
Thrombin time	1 (100)	1
Alkaline phosphatase (ALP)	1 (50)	2
Complement 3 (C3)	1 (50)	2
Cystatin C (CysC)	1 (50)	2
Eosinophils (absolute count)	1 (50)	2
Interferon- γ (INF- γ)	1 (50)	2
International normalised ratio (INR)	1 (50)	2
Monocyte (%)	1 (50)	2
Interleukin-8 (IL-8)	1 (33)	3
Immunoglobulin G (IgG)	1 (33)	3
Immunoglobulin M (IgM)	1 (33)	3
Total protein	1 (33)	3
Sodium	1 (25)	4
Partial thromboplastin time (PTT)	1 (11)	9
Monocyte (absolute count)	0 (0)	10
Gamma-glutamyl transferase (GGT)	0 (0)	3
Interleukin-1 beta (IL-1 β)	0 (0)	3
Immunoglobulin A (IgA)	0 (0)	3
Anti-Thrombin Activity	0 (0)	1
Complement 4 (C4)	0 (0)	2
Basophils (absolute count)	0 (0)	1
Haematocrit	0 (0)	1
Serum chloride	0 (0)	1
Serum urea nitrogen	0 (0)	1
Imaging findings**		
Abnormal CT	10 (63)	16
Abnormal chest X-ray	2 (50)	4
Normal CT	1 (50)	2

*Significance denoted by $p < 0.05$ as related to illness severity by definition specified in paper.

**No data were available on the predictive value of normal chest X-rays.

Appendix: Search strategy

PubMed

Search date: 19/4/20

Restricted to studies published from 1/12/19-19/4/20

#	Search terms	No. results
1	NCoV [TIAB] OR Coronavirus [MeSH] OR "severe acute respiratory syndrome coronavirus 2" [MeSH] OR "COVID*" [TIAB] OR "COVID-19" [TIAB] OR Coronavirus infections [MeSH] or "coronavirus" [TIAB]	5 581
2	Severity of Illness Index [MeSH] OR "sever*" [TIAB] OR "critical*" [TIAB] OR Patient Admission [MeSH] OR Length of Stay [MeSH] OR Critical Illness [MeSH] OR Critical care [MeSH] OR Outcome* [TIAB] OR Mortality [MeSH] OR Death [MeSH] OR Morbidity [MeSH] OR Respiratory Insufficiency [MeSH] OR Respiratory Distress Syndrome, Adult [MeSH] OR Respiration, Artificial [MeSH] OR "ventilation" [TIAB]	106 821
3	Demography [MeSH] OR "Age" [TIAB] OR "Sex" [TIAB] OR "Gender" [TIAB]	84 335
4	Comorbidity [MeSH] OR "Co-morbid*" [TIAB] OR "Comorbid*" [TIAB] OR "Pre-exist*" [TIAB] OR "Condition*" [TIAB]	18 804
5	Signs and Symptoms [MeSH] OR "symptom*" [TIAB] OR "characteristic*" OR "clinical" OR "presentation*" [TIAB]	20 966
6	Diagnostic Techniques and Procedures [MeSH] OR "Imag*" OR "X-ray*" OR "Xray*" OR "CT" OR "Computed Tomography" OR "Radiograph*"	43 618
7	1 + 2 + 3	168
8	1 + 2 + 4	117
9	1 + 2 + 5	378
10	1 + 2 + 6	123

Scopus

Search date: 19/4/20

Restricted to studies published from 1/1/19-19/4/20

#	Search terms	No. results
1	TITLE-ABS-KEY(NCoV OR severe acute respiratory syndrome coronavirus 2 OR COVID* OR COVID-19 OR coronavirus)	828
2	TITLE-ABS-KEY("severity of illness index" OR sever* OR critical* OR "patient admission" OR "length of stay" OR "critical illness" OR "critical care" OR outcome* OR mortality OR death OR morbidity OR respiratory AND insufficiency OR "respiratory distress syndrome" OR respiration OR ventilation)	24 468
3	TITLE-ABS-KEY(demograph* OR age OR sex OR gender)	132 302
4	TITLE-ABS-KEY(comorbidity OR co-morbid* OR comorbid* OR pre-exist* OR preexist OR condition*)	556 058
5	TITLE-ABS-KEY("signs and symptoms" OR symptom* OR characteristic* OR clinical OR presentation*)	1 001 095
6	TITLE-ABS-KEY(diagnostic OR techniques OR procedures OR invest*OR imag* OR X-ray* OR Xray* OR CT OR Computed Tomography OR radiograph*)	46 425
7	1 + 2 + 3	28
8	1 + 2 + 4	32
9	1 + 2 + 5	60
10	1 + 2 + 6	7

Web of Science

Search date: 19/4/20

Restricted to studies published from 1/1/19-31/3/20

#	Search terms	No. results
1	TS=(COVID* OR NCoV OR Coronavirus* OR SARS-CoV-2)	1 132
2	TS=(Sever* OR Critical* OR Admit* OR Admission* OR Length of stay* OR Critical Care OR Intensive Care OR Outcome OR Mortality OR Death OR Morbidity OR Respiratory Failure OR Respiratory Distress OR Respiration OR Ventilation)	625 363
3	TS=(Demograph* OR Age* OR Gender* OR Sex*)	397 718
4	TS=(Comorbid* OR Co-morbid* OR Preexist* OR Pre-exist* OR Condition*)	358 857
5	TS=(Symptom* OR Sign* OR Characteristic* OR Clinical* OR Present*)	1 363 307
6	TS=(Vital* OR Vital* Sign*)	24 207
7	TS=(Blood* OR Blood Test* OR Laboratory* OR Investigat* OR Blood Count*)	653 308
8	TS=(Imaging OR Image OR X-ray* or Xray* OR CT OR Computed Tomography OR Radiograph*)	260 291
9	1 + 2 + 3	165
10	1 + 2 + 4	59
11	1 + 2 + 5	442
12	1 + 2 + 6	12
13	1 + 2 + 7	203
14	1 + 2 + 8	57