

1 **Influence of blood pressure on pneumonia risk:**
2 **Epidemiological association and Mendelian randomisation in the UK Biobank**
3
4

5 Seyedeh M. Zekavat BS (1-4; ORCID: 0000-0003-4026-8944), Michael Honigberg MD MPP (3-
6 6), James Pirruccello MD (3-6), Puja Kohli MD MMSc (5,7), Elizabeth W. Karlson MD (4,5,8),
7 Christopher Newton-Cheh MD MPH (3-6), Hongyu Zhao PhD (2,9), Pradeep Natarajan MD
8 MMSc (3-6; ORCID: 0000-0001-8402-7435)
9

- 10 1. Yale School of Medicine, New Haven, CT;
11 2. Computational Biology & Bioinformatics Program, Yale University, New Haven, CT;
12 3. Program in Medical and Population Genetics, Broad Institute of MIT and Harvard,
13 Cambridge, MA;
14 4. Center for Genomic Medicine, Massachusetts General Hospital, Boston, MA;
15 5. Department of Medicine, Harvard Medical School, Boston, MA;
16 6. Cardiovascular Research Center, Massachusetts General Hospital, Boston, MA;
17 7. Division of Pulmonary and Critical Care Medicine, Massachusetts General Hospital, Boston,
18 MA;
19 8. Division of Allergy, Immunology, and Rheumatology, Brigham and Women's Hospital,
20 Boston, MA;
21 9. Department of Biostatistics, Yale School of Public Health, New Haven, CT
22

23 Please address correspondence to:

24 Pradeep Natarajan, MD MMSc
25 pnatarajan@mgh.harvard.edu
26 185 Cambridge Street, CPZN 3.184, Boston, MA 02114
27 Tel: 617-724-3526
28 Fax: 617-726-2203
29 Twitter: @pnatarajanmd
30

31 Abstract word count: 258

32 Main text word count: 3,878

33 Main display item count: 4

34 Reference count: 52
35

36 **Key words:** Pneumonia, Respiratory Infections, Pulmonary Function Tests, Hypertension,
37 Blood Pressure, Genetic Epidemiology, Population Genetics

1 **Abstract:**

2
3 **Objectives** – To determine whether elevated blood pressure influences risk for respiratory
4 infection.

5
6 **Design** – Prospective, population-based epidemiological and Mendelian randomisation studies.

7
8 **Setting** – UK Biobank.

9
10 **Participants** – 377,143 self-identified British descent (54% women; median age 58 years)
11 participants in the UK Biobank.

12
13 **Main outcome measures** – First incident pneumonia over an average of 8 follow-up years.

14
15 **Results** – 107,310 (30%) participants had hypertension at UK Biobank enrolment, and 9,969
16 (3%) developed a pneumonia during follow-up. Prevalent hypertension at baseline was
17 significantly associated with increased risk for incident respiratory disease including pneumonia
18 (hazard ratio 1.36 (95% confidence interval 1.29 to 1.43), $P < 0.001$), acute respiratory distress
19 syndrome or respiratory failure (1.43 (1.29 to 1.59), $P < 0.001$), and chronic lower respiratory
20 disease (1.30 (1.25 to 1.36), $P < 0.001$), independent of age, age², sex, smoking status, BMI,
21 prevalent diabetes mellitus, prevalent coronary artery disease, and principal components of
22 ancestry. Mendelian randomisation analyses indicated that genetic predisposition to a 5 mmHg
23 increase in blood pressure was associated with increased risk of incident pneumonia for SBP
24 (1.08, (1.04 to 1.13), $P < 0.001$) and DBP (1.11 (1.03 to 1.20), $P = 0.005$). Additionally, consistent
25 with epidemiologic associations, increase in blood pressure genetic risk was significantly
26 associated with reduced forced expiratory volume in the first second, forced vital capacity, and
27 the ratio of the two ($P < 0.001$ for all).

28
29 **Conclusions** – These results strongly suggest that elevated blood pressure independently
30 increases risk for pneumonia and reduces pulmonary function. Maintaining adequate blood
31 pressure control, in addition to other measures, may reduce risk for pneumonia. Whether the
32 present findings are generalizable to novel coronavirus disease 2019 (COVID-19) require
33 further study.

1 **Summary Box:**
2

3 **Section 1: What is already known on this topic**

- 4 • Hypertension has been associated with pneumonia in small observational studies.
5 • Based on early epidemiologic analyses, hypertension is described as a risk factor for
6 SARS-CoV-2 infection and associated novel coronavirus disease 2019 (COVID-19).
7 • The influence of hypertension on pneumonia risk is difficult to assess in traditional
8 observational studies.
9

10 **Section 2: What this study adds**
11

- 12 • Our pre-COVID-19 analyses are consistent with a causal relationship between increased
13 blood pressure and increased risk for incident respiratory infections, as well as between
14 increased blood pressure and reduced pulmonary function.
15 • These results support hypertension as a pneumonia risk factor; efforts to optimize blood
16 pressure may reduce risk for pneumonia.

1 **Introduction**

2

3 Hypertension is a highly prevalent, modifiable risk factor for cardiovascular disease and
4 mortality¹. Epidemiologic analyses have correlated hypertension with pneumonia risk in small
5 studies^{2,3}. Whether this represents a direct consequence of hypertension or influence of co-
6 morbid risk factors such as age, diabetes mellitus, air pollution, or smoking is unclear.

7

8 Hypertension has emerged as one of the most well-recognized risk factors for developing novel
9 coronavirus disease 2019 (COVID-19) from SARS-CoV-2 infection⁴⁻⁷. In particular, patients with
10 COVID-19 who develop acute respiratory distress syndrome (ARDS) are particularly enriched
11 for hypertension⁷. Angiotensin converting enzyme (ACE) is an endogenous regulator of blood
12 pressure that is highly expressed in the lung and has been linked to risk for acute respiratory
13 distress syndrome (ARDS)^{8,9}. ACE2, a homolog and endogenous counter-regulator of ACE, is
14 expressed in a subset of type II alveolar cells and is an important facilitator of cell entry by
15 SARS-CoV-2⁸⁻¹⁰. ACE2 has also been implicated in lung injury related to other respiratory
16 viruses and bacterial pathogens¹¹⁻¹³. While professional societies have encouraged patients to
17 remain on ACE inhibitors during the present pandemic, recommendations were largely made in
18 the absence of robust human data.

19

20 Although epidemiologic analyses support a plausible causal relationship between blood
21 pressure regulation and respiratory infection risk, confounding from comorbid conditions limit
22 such inference. Importantly, comorbid factors such as advanced age, diabetes mellitus, and
23 cardiovascular disease have also been described as independent risk factors for pneumonia
24 previously as well as for COVID-19. Mendelian randomisation is a statistical approach using
25 genetic proxies for an exposure as opposed to the exposure itself to mitigate risks for
26 confounding facilitating more robust causal inference¹⁴. Blood pressure is a highly heritable trait

1 with several known associated genomic loci that may serve as a robust aggregated genetic
2 proxy for Mendelian randomization¹⁵.

3
4 In the UK Biobank prior to the COVID-19 pandemic, we (1) estimate the epidemiologic
5 association of hypertension with incident pneumonia risk and indices of pulmonary function, and
6 (2) apply Mendelian randomisation to test the hypothesis that blood pressure independently
7 causally influences risks for pneumonia and reduced pulmonary function.

8

9 **Methods**

10

11 **UK Biobank**

12

13 Individual-level genomic data and longitudinal phenotypic data from the UK Biobank, a large-
14 scale population-based cohort with genotype and phenotype data in approximately 500,000
15 volunteer participants recruited from 2006-2010 was used¹⁶. Baseline assessments were
16 conducted at 22 assessment centres across the UK using touch screen questionnaire, computer
17 assisted verbal interview, physical tests, and sample collection including for DNA. Additional
18 details regarding the study protocol are described online (www.ukbiobank.ac.uk). Of 488,377
19 individuals genotyped in the UK Biobank, we used data for 377,143 participants with white
20 British ancestry consenting to genetic analyses, with genotypic-phenotypic sex concordance,
21 without sex aneuploidy, and one from each pair of 1st or 2nd degree relatives selected randomly.
22 Participants provided informed consent as previously described. Secondary use of the data was
23 approved by the Massachusetts General Hospital institutional review board (protocol
24 2013P001840) and facilitated through UK Biobank Application 7089.

1 Genome-wide genotyping was previously performed in the UK Biobank using two genotyping
2 arrays sharing 95% of marker content: Applied Biosystems UK BiLEVE Axiom Array (807,411
3 markers in 49,950 participants) and Applied Biosystems UK Biobank Axiom Array (825,927
4 markers in 438,427 participants) both by Affymetrix (Santa Clara, CA)¹⁶. Variants used in the
5 present analysis include those also imputed using the Haplotype Reference Consortium
6 reference panel of up to 39 million single nucleotide polymorphisms (SNPs)^{17 18}. Poor quality
7 variants and genotypes were filtered as previously described¹⁶.

8 **Phenotypes**

9

10 Hypertension, covariates, and medication measures

11 Disease definitions for hypertension and clinical disease covariates are as previously
12 described¹⁹. In brief, hypertension was defined by self-reported hypertension and billing codes
13 for essential hypertension, hypertensive disease with and without heart failure, hypertensive
14 heart and renal diseases, and secondary hypertension. Prevalent coronary artery disease
15 (CAD), was defined by billing codes for heart attack, angina pectoris, unstable angina,
16 myocardial infarction, coronary atherosclerosis, coronary artery revascularization, and other
17 acute, subacute, and chronic forms of ischemic heart disease, or with self-reported angina,
18 heart attack/myocardial infarction, coronary angioplasty +/- stent, or coronary artery bypass
19 graft (CABG) surgery. Diabetes mellitus included billing codes for type 1, type 2, and gestational
20 diabetes mellitus, as well as self-reported diabetes mellitus and insulin use.

21 Blood pressure medications were characterized by medication type into angiotensin converting
22 enzyme inhibitors (ACEi), angiotensin receptor blockers (ARB), or other medication. The list of
23 ACEi and ARBs considered in UK Biobank participants is provided in **Supplementary Table 1**.

1 Patients taking at least one ACEi were included in the ACEi category, patients taking no ACEi
2 but at least one ARB were included in the ARB category, and patients who reported that they
3 were taking a blood pressure medication (via UK Biobank Field IDs 6153 and 6177) but were
4 not taking an ACEi or ARB were included in the 'other' category.

5

6 Respiratory outcomes

7 Clinical disease definitions for our primary outcome (pneumonia) and related respiratory
8 outcomes are detailed in **Supplementary Table 2**. In summary, these included respiratory
9 diseases using the first reported occurrences of respiratory system disorders in Category 2410
10 as categorized by the UK Biobank (<http://biobank.ndph.ox.ac.uk/showcase/label.cgi?id=2410>)
11 which maps primary care data, ICD-9 and ICD-10 codes from hospital inpatient data, ICD-10
12 codes in death register records, and self-reported medical conditions reported at the baseline, to
13 ICD-10 codes. For each set of phenotypes, the time to first incident event after baseline
14 examination in individuals free of prevalent history of respiratory system disorder was used.
15 Pneumonia includes viral, bacterial, and unspecified aetiologies (J12-J18). Influenza or viral
16 pneumonia includes confirmed or suspected influenza or viral pneumonia (J09-J12). The acute
17 upper respiratory infections category includes acute nasopharyngitis, sinusitis, pharyngitis,
18 tonsillitis, laryngitis, tracheitis, croup, epiglottitis, or upper respiratory infections of multiple and
19 unspecified sites (J00-J06). The other acute lower respiratory infections category includes acute
20 bronchitis, bronchiolitis, or unspecified acute lower respiratory infections (J20-J22). The other
21 diseases of the upper respiratory tract category includes rhinitis, nasopharyngitis, pharyngitis,
22 chronic sinusitis, nasal polyps, other disorders of the nose and nasal sinuses, chronic diseases
23 of the tonsils and adenoids, peritonsillar abscess, chronic laryngitis, laryngotracheitis, diseases
24 of the vocal cords and larynx, or other diseases of the upper respiratory tract (J30-J39). Chronic
25 lower respiratory diseases include bronchitis, emphysema, chronic obstructive pulmonary
26 disease, asthma, bronchiectasis (J40-J47). Other interstitial respiratory diseases refer to acute

1 respiratory distress syndrome (ARDS), pulmonary oedema, or other interstitial pulmonary
2 diseases (J80, J81, J84). Respiratory failure refers to J96 (respiratory failure not elsewhere
3 classified).

4
5 Quantitative phenotypes included best-measure pulmonary function tests from spirometry using
6 a Vitalograph Pneumotrac 6800 (Buckingham, United Kingdom), including forced expiratory
7 volume in the first second (FEV1), forced vital capacity (FVC), and the ratio of these two
8 measurements (FEV1/FVC). For each individual measurement, extreme outliers were
9 determined and filtered by adjusting the traditional box and whisker upper and lower bounds
10 and accounting for skewness in the phenotypic data identified using the Robustbase package in
11 R (setting range=3) (<https://cran.r-project.org/web/packages/robustbase/robustbase.pdf>).

12 Phenotypes were then inverse rank normalized to mean 0 and standard deviation (SD) 1 for
13 analysis.

15 **Statistical methods**

17 Association between prevalent hypertension and respiratory conditions in the UK Biobank

18 Phenotypic association of prevalent hypertension with incident respiratory diseases and with
19 pulmonary function tests was performed using Cox proportional hazards models among
20 individuals without the corresponding prevalent condition in R (version 3.5, R Foundation,
21 Vienna, Austria). The proportional hazards assumption was assessed by Schoenfeld residuals
22 and was satisfied. The sparsely adjusted model included age, age², sex, smoking status
23 (current, previous, or never smoker), and the first ten principal components of ancestry. The
24 fully adjusted model additionally incorporated body-mass index (BMI), prevalent diabetes
25 mellitus, and prevalent coronary artery disease.

26

1 Genetic instruments for blood pressure and association analyses

2 One-sample Mendelian randomisation was performed in the UK Biobank by associating inverse-
3 rank normalized systolic blood pressure and diastolic blood pressure polygenic risk scores (SBP
4 PRS, DBP PRS) with incident respiratory disease phenotypes. The 75 variants comprising each
5 genetic instrument (**Supplementary Tables 3, 4**) were determined by identifying genome-wide
6 significant ($P < 5 \times 10^{-8}$), largely uncorrelated (linkage disequilibrium $r^2 < 0.2$) variants for each
7 phenotype from the International Consortium for Blood Pressure (ICBP) GWAS summary
8 statistics across 299,024 individuals among 77 cohorts excluding the UK Biobank¹⁵.

9
10 Additive polygenic risk scores were determined as such: $\sum_{i=1}^{75} \text{Beta} \times \text{SNP}_{ij}$, where *Beta* is the
11 weight for each allele of SNP_i from the ICBP GWAS summary statistics, and SNP_{ij} is the
12 number of alleles (i.e., 0, 1, or 2) for SNP_i in participant *j* in the UK Biobank. To confirm that the
13 SBP PRS and DBP PRS were strong instruments, we assessed their associations with SBP and
14 DBP, adjusted for blood pressure medications by adding 15 and 10 mmHg to SBP and DBP,
15 respectively, as previously done^{20 21}. Each genetic instrument was validated against its
16 exposure by calculating an F-statistic derived from unadjusted linear regression of the exposure
17 against its PRS. An F-statistic greater than 10 indicates low risk of weak-instrument bias.

18
19 Additional sensitivity analyses tested associations between each PRS and potential social and
20 lifestyle confounders including the Townsend deprivation index for socioeconomic status
21 estimation²², smoking status (Field ID 20116), alcohol intake frequency (Filed ID 1558),
22 vegetable serving intake (Field ID 104060), handfuls of sweet intake (Field ID 102330),
23 significant life stressor over the past two years (Field ID 6145), and exercise frequency (Field ID
24 3637).

25

1 Association analysis of the SBP and DBP PRS with incident respiratory diseases was
2 performed using Cox proportional hazards models in R (version 3.5, R Foundation, Vienna,
3 Austria), adjusting for age, age², sex, smoking status, and the first ten principal components of
4 ancestry. The proportional hazards assumption was assessed by Schoenfeld residuals and was
5 satisfied. Association analyses between the SBP and DBP PRS and pulmonary function tests
6 was performed using a generalized linear model adjusted for the same covariates.

7
8 Association of the 75 variants for each PRS with both prevalent and incident pneumonia was
9 performed using a logistic regression Wald test in Hail-0.2, adjusting for age, age², sex, smoking
10 status, the first ten principal components of ancestry, and genotype array. Using these
11 associations, two-sample Mendelian randomization was performed using the ICBP-derived SBP
12 and DBP genetic instruments as exposures and the respective effects of each variant on
13 pneumonia in the UK Biobank as outcomes. Two-sample Mendelian randomization was
14 performed using both the robust, penalized inverse variance weighted (IVW) method from the
15 MendelianRandomization package in R^{23 24}, as well as robust adjusted profile score (MR-
16 RAPS)²⁵ for comparison. IVW 2-sample Mendelian randomization uses a weighted linear
17 regression of the ratio of the SNP effects on the outcomes to the SNP effects on the risk factor,
18 without using an intercept term. MR-RAPS models the systematic pleiotropy using a random
19 effects model to create a robust adjusted profile score. We additionally use the TwoSampleMR
20 package in R (<https://mrcieu.github.io/TwoSampleMR/index.html>) to perform multiple sensitivity
21 analyses including heterogeneity tests, the MR Egger intercept test for horizontal pleiotropy, and
22 leave-one-out analyses to determine if there is a single variant driving the genetic association.

23

24 **Results**

25

26 **Baseline characteristics**

1
2 A total of 377,143 genotyped individuals in the UK Biobank passed quality control criteria.
3 Among these individuals, median age was 58 [interquartile range 51-63] years, 202,369 (53.7%)
4 were female, 18,943 (5.0%) had diabetes mellitus, 107,310 (29.7%) had hypertension, and
5 20,825 (5.7%) had coronary artery disease. 170,713 (45.4%) of individuals were prior or current
6 smokers, and 85,565 (22.6%) of individuals were on antihypertensive medications
7 **(Supplementary Table 5).**

8
9 Across an average follow-up time of 8 years (IQR 7-11 years), 9,969 (2.6%) individuals
10 developed a pneumonia, 11,972 (3.3%) developed influenza or pneumonia, 18,172 (5.5%)
11 developed an acute upper respiratory infection, 21,734 (6.2%) developed other lower respiratory
12 infection (e.g., bronchitis), 12,963 (4.0%) developed a chronic lower respiratory disease, 1,792
13 (0.5%) developed other interstitial respiratory disease, and 2,621 (0.7%) developed ARDS or
14 respiratory failure.

15
16 **Epidemiological association of prevalent hypertension with incident respiratory disease**

17
18 Prevalent hypertension was independently associated with risk of incident respiratory disease
19 including pneumonia (1.36 (1.29 to 1.43), $P < 0.001$), chronic lower respiratory disease (1.30,
20 (1.25 to 1.36), $P < 0.001$), influenza or pneumonia (1.31 (1.25 to 1.37), $P < 0.001$), ARDS or
21 pulmonary failure (1.43 (1.29 to 1.59), $P < 0.001$), other lower respiratory infections (1.15 (1.37 to
22 1.45), $P < 0.001$), other acute upper respiratory infection (1.06 (1.11 to 1.19), $P = 0.002$), other
23 interstitial respiratory disease (1.16 (1.02 to 1.31), $P = 0.022$), and influenza or viral pneumonia
24 (1.12 (1.01 to 1.23), $P = 0.032$), after adjustment for age, age², sex, smoking status, BMI,
25 prevalent diabetes, prevalent coronary artery disease, and the first ten principal components of
26 population stratification (**Figure 1**).

1
2
3
4
5
6
7
8
9
10
11
12
13
14
15
16
17
18
19
20
21
22
23
24
25
26

Epidemiological association of antihypertensive use with incident pneumonia

Among the participants, ACEi were prescribed for 37,865 (10.0%), ARBs for 13,207 (3.5%), and other antihypertensives for 34,493 (9.1%). Prescriptions for ACEi, ARBs, or other antihypertensive medicines were similarly associated with increased risk for incident pneumonia (**Figure 2**). However, upon further adjustment for prevalent hypertension status, we did not observe an association of these medication classes with risk for pneumonia.

Genetic association of blood pressure with incident respiratory disease

We first used one-sample Mendelian randomisation to determine whether a genetic predisposition to increased blood pressure is associated with increased risk for incident pneumonia as well as other respiratory diseases.

Our SBP and DBP genetic instruments each consisted of 75 independent variants (linkage disequilibrium $r^2 < 0.2$) that were genome-wide significant among 299,024 individuals external to the UK Biobank from the International Consortium for Blood Pressure Genomics. The resulting PRS for SBP and, separately, for DBP were significantly associated with their respective phenotypes in the UK Biobank, with each SD increase in the SBP PRS increasing SBP by 2.26mmHg (F-statistic: 4176) and each SD increase in the DBP PRS increasing DBP by 1.32 mmHg (F-statistic: 4785) (**Supplementary Table 6**). 53 SNPs (or SNPs in perfect linkage disequilibrium) were common to both SBP and DBP PRS. Sensitivity analyses were performed to assess for potential social and lifestyle confounders associating with the SBP and DBP PRS, and found no significant associations between the PRS and the Townsend deprivation index for socioeconomic status estimation, smoking status, alcohol intake frequency, vegetable intake,

1 sweet intake, significant life stressor in the past two years, or exercise frequency

2 **(Supplemental Table 7).**

3
4 Each SD increase in the SBP PRS was associated with a significant increased risk of incident
5 pneumonia (1.04 (1.02 to 1.06), $P < 0.001$), influenza or pneumonia (1.03 (1.01 to 1.05),
6 $P = 0.003$), and other lower respiratory infection (1.02 (1.00 to 1.03), $P = 0.029$). Each SD increase
7 in the DBP PRS was also associated with an increased risk of incident pneumonia (1.03, (1.01
8 to 1.05), $P = 0.005$), and other lower respiratory infections (1.02 (1.00 to 1.03), $P = 0.012$) **(Figure**
9 **3)**. Accordingly, each 5mmHg increase in SBP conferred by the SBP PRS was associated with
10 a significant increased risk of incident pneumonia (1.08 (1.04 to 1.13),
11 $P < 0.001$), influenza or pneumonia (1.06 (1.02 to 1.11), $P = 0.003$), and other lower respiratory
12 infection (1.03 (1.00 to 1.06), $P = 0.029$). Additionally, each 5mmHg increase in DBP conferred
13 by the DBP PRS was associated with an increased risk of incident pneumonia (1.11, (1.03 to
14 1.20), $P = 0.005$), and other lower respiratory infections (1.07 (1.01 to 1.12), $P = 0.012$).

15
16 Two-sample Mendelian randomization was additionally performed using pneumonia association
17 statistics, from the UK Biobank, for the 75 variants, with blood pressure summary statistics
18 external to the UK Biobank as above. Both penalized, robust, inverse-variance weighted (IVW)
19 and robust adjusted profile score (MR-RAPS)²⁵ methods produced similarly significant results
20 **(Supplementary Table 8)**. Sensitivity analyses were additionally performed to analyse the
21 robustness of the results. Across both SBP and DBP genetic instruments, the IVW
22 heterogeneity test and the MR Egger regression intercept term are both insignificant, suggesting
23 negligible contribution of heterogeneity and directional horizontal pleiotropy **(Supplementary**
24 **Table 8)**. Additionally, the Steiger directionality test²⁶ suggests the correct causal direction of
25 blood pressure on pneumonia. Lastly, leave-one-out analyses was additionally performed,
26 suggesting that no single SNP drives the observed association **(Supplementary Figure 1)**.

1 Variants previously described to influence *ACE* expression in the lung (rs145126552,
2 rs4277405) or kidney (rs6504163) in GTEx²⁷, were not individually associated with pneumonia
3 risk ($P>0.05$).

4

5 **Epidemiological association of prevalent hypertension with pulmonary function tests**

6

7 Secondary analyses identified significant associations between prevalent hypertension and
8 reduced pulmonary function tests (FEV1: -0.088 SD (-0.09 to -0.08), $P<0.001$; FVC: -0.85 SD (-
9 0.09 to -0.08), $P<0.001$; FEV1/FVC: -0.013 SD (-0.02 to -0.01), $P<0.001$), independent of age,
10 age², sex, smoking status, body mass index, prevalent coronary artery disease, prevalent
11 diabetes mellitus, and the first ten principal components of ancestry (**Figure 4A**).

12

13 **Genetic association of blood pressure with pulmonary function tests**

14

15 Each SD increase in SBP PRS was significantly associated with reduced pulmonary function
16 tests (FEV1: -0.007 SD (-0.01 to -0.005), $P<0.001$; FVC: -0.003 SD (-0.005 to -0.001),
17 $P=5.91\times 10^{-3}$; FEV1/FVC: -0.014 SD, (-0.017 to -0.011), $P<0.001$). Similar associations were
18 identified for between DBP PRS and pulmonary function tests (FEV1: -0.005 SD(-0.008 to -
19 0.003), $P<0.001$; FVC: -0.003 SD (-0.005 to 0), $P=0.02$; FEV1/FVC: -0.009 SD, (-0.013 to -
20 0.006), $P<0.001$) (**Figure 4B**).

21

22 **Discussion**

23

24 In a large, prospective, population-based cohort, we show that prevalent hypertension is a risk
25 factor for incident pneumonia, lower respiratory infections, ARDS or respiratory failure, as well
26 as many other respiratory diseases. Additionally, our epidemiological analyses also

1 demonstrate an association between prevalent hypertension and increased pulmonary
2 obstruction as indicated by reduced FEV1/FVC. Our Mendelian randomisation studies imply that
3 the relationship between increased blood pressure with increased risk for pneumonia as well as
4 reduced pulmonary function may be causal.

5
6 Our findings may have important implications for the prevention of pneumonia. First, our study
7 establishes that hypertension is an important independent risk factor for the development of
8 pneumonia. Our observation is consistent with prior unadjusted estimates in retrospective
9 analyses^{2,28}. Although significantly associated, the effect of hypertension adjusted for important
10 confounders on future risk for pneumonia is more moderate, as anticipated. Furthermore, our
11 genetic analyses are consistent with a causal relationship between blood pressure and
12 pneumonia. Hypertension has been proposed to promote key factors which may predispose to
13 infection via several potential mechanisms. (1) Hypertensive stimuli promote dysregulation of
14 the adaptive immune response. Chronic angiotensin II infusions in mice increase markers of T
15 lymphocyte activation and perivascular adipose infiltration²⁹. Additional murine studies have
16 indicated that monocytes and neutrophils may be key factors in angiotensin II-mediated
17 hypertension and resultant vascular dysfunction^{30,31}. A recent Mendelian randomisation study
18 supported a causal relationship between blood pressure and subsequent alteration in
19 neutrophil, monocyte, and eosinophil indices³². (2) Endothelial dysfunction as a consequence of
20 hypertension may promote infection. Dysregulation of nitric oxide release and signalling in
21 murine models of pulmonary inflammation leads to exacerbated lung injury³³. Furthermore,
22 superoxides generated from endothelial NADPH oxidase may play a role in exacerbating
23 influenza-associated lung injury in experimental models³⁴.

24
25 Second, in addition immunologic and vascular effects, blood pressure elevations may result in
26 pulmonary function alterations predisposing to the development of pneumonia. Our Mendelian

1 randomisation analyses with pulmonary function tests support a causal association between
2 increased blood pressure and indices of increased pulmonary obstruction as indicated by
3 reduced FEV1/FVC. Several prior studies have linked hypertension with decreased
4 performance on pulmonary function tests, reduced lung function, and increased pulmonary
5 obstruction³⁵⁻³⁷. Chronic obstructive pulmonary disease (COPD) is a well-established risk factor
6 for pneumonia, and is co-morbid with several cardiovascular diseases and risk factors including
7 hypertension³⁸. Our study extends these observations to show that increased blood pressure
8 may causally lead to increased pulmonary obstruction representing a putative mechanism
9 toward heightened pneumonia risk. Together, these studies and others suggest several
10 mechanisms which may link hypertension and pulmonary obstruction: 1) both may involve
11 physiological degradation of arterial and airway elasticity³⁷, 2) endothelial and vascular
12 dysfunction may also influence pulmonary vascular endothelial cells and lead to pulmonary
13 vascular dysfunction resulting in lung tissue destruction and airway obstruction⁴⁰, and 3)
14 systemic inflammation associated with hypertension may additionally alter pulmonary function⁴¹
15 ³².

16
17 Third, since our results are consistent with a causal relationship between blood pressure and
18 pneumonia risk, blood pressure optimization is anticipated to reduce pneumonia risk in the
19 population orthogonal to other strategies aimed at reducing infection risk. Since *ACE* is highly
20 expressed in the lung with adverse effects, such as cough, there were initial concerns about
21 ACEi potentially exacerbating pulmonary diseases or leading to pulmonary infections. The
22 observational association of antihypertensives with increased pneumonia risk is rendered
23 nonsignificant when adjusting for hypertension consistent with confounding by indication. A
24 meta-analysis comprising of randomized controlled and observational studies indicated that
25 ACEi may be protective for pneumonia risk⁴². As detailed earlier, since ACE2 may serve as a
26 receptor for respiratory viral entry and is an endogenous counter-regulator of ACE, conflicting

1 hypotheses for ACEi and COVID-19 risk have emerged⁴³⁻⁴⁵. We do not observe that genetic
2 variants influencing the expression of *ACE* in the lung or kidney significantly increase the risk of
3 pneumonia. Whether genetic variants at *ACE* have outsized influence on COVID-19 risk
4 requires further study. However, our results are aligned with current recommendations to
5 maintain stable, normal blood pressure, including with ACEi as indicated^{46 47}. Consistent with
6 this finding, the Systolic Blood Pressure Intervention Trial (SPRINT) also showed that intensive
7 blood pressure reduction (to a mean SBP of 121 mmHg) resulted in fewer cases of incident
8 pneumonia (2.1% versus 2.4%) compared to standard blood pressure reduction (to a mean
9 SBP of 136 mmHg)⁴⁸. Additionally, a separate multi-center study of 1,128 patients with
10 hypertension diagnosed with COVID-19 showed that inpatient use of ACEi/ARB was associated
11 with lower risk of all-cause mortality compared with ACEi/ARB non-users (HR 0.37, P=0.03)⁴⁹.
12 Thus, withdrawal of ACEi and challenges of blood pressure management while promoting
13 physical distancing, may not only have untoward cardiovascular consequences but may
14 inadvertently increase pneumonia risk.

15

16 **Strengths and limitations**

17

18 This study has several strengths, including the analysis of a large, genotyped population-based
19 cohort with high fidelity phenotyping, including with subclinical respiratory phenotypes.
20 Furthermore, diverse phenotyping facilitates extensive individual-level covariate adjustment in
21 the models and sensitivity analyses to assess for pleiotropy. Our overall study design, with the
22 incorporation of Mendelian randomisation, permits more robust causal inference in humans
23 beyond observational prospective analyses. While our study has several strengths, some
24 limitations should be considered. First, the present analyses were conducted among individuals
25 of white British ancestry residing in the UK; whether the present findings generalize to diverse
26 ethnicities and other geographic regions remains to be tested. Second, our model assumes the

1 association of the genetic instrument to the outcome occurs via the primary exposure and is not
2 confounded by pleiotropy^{50 51}. We have performed a number of sensitivity analyses to assess for
3 possible confounders, in particular, we observe that our genetic instruments for blood pressure
4 are not associated with key socioeconomic and lifestyle factors influencing both blood pressure
5 and pneumonia risk. We further maintain a sparsely adjusted model in our one-sample
6 Mendelian randomization analyses to reduce the potential for collider bias⁵². Additionally,
7 secondary 2-sample Mendelian randomization analyses provide consistent results with no
8 evidence of horizontal pleiotropy, heterogeneity, or individual variants driving the association.
9 Third, while our results do not yield an association between *ACE* eQTLs and pneumonia risk,
10 we cannot rule out the possibility of reduced power for this analysis. Fourth, outcomes for the
11 present analyses occurred prior to the COVID-19 pandemic. The first release of COVID-19
12 phenotypes from the UK Biobank participants has few COVID-19 events (approximately 0.1%),
13 which limits power. Furthermore, with testing data only in 0.3% of UK Biobank participants,
14 analyses are currently limited by ascertainment bias. Whether the current findings translate to
15 COVID-19 require further verification.

16
17

18 **Conclusions:**

19

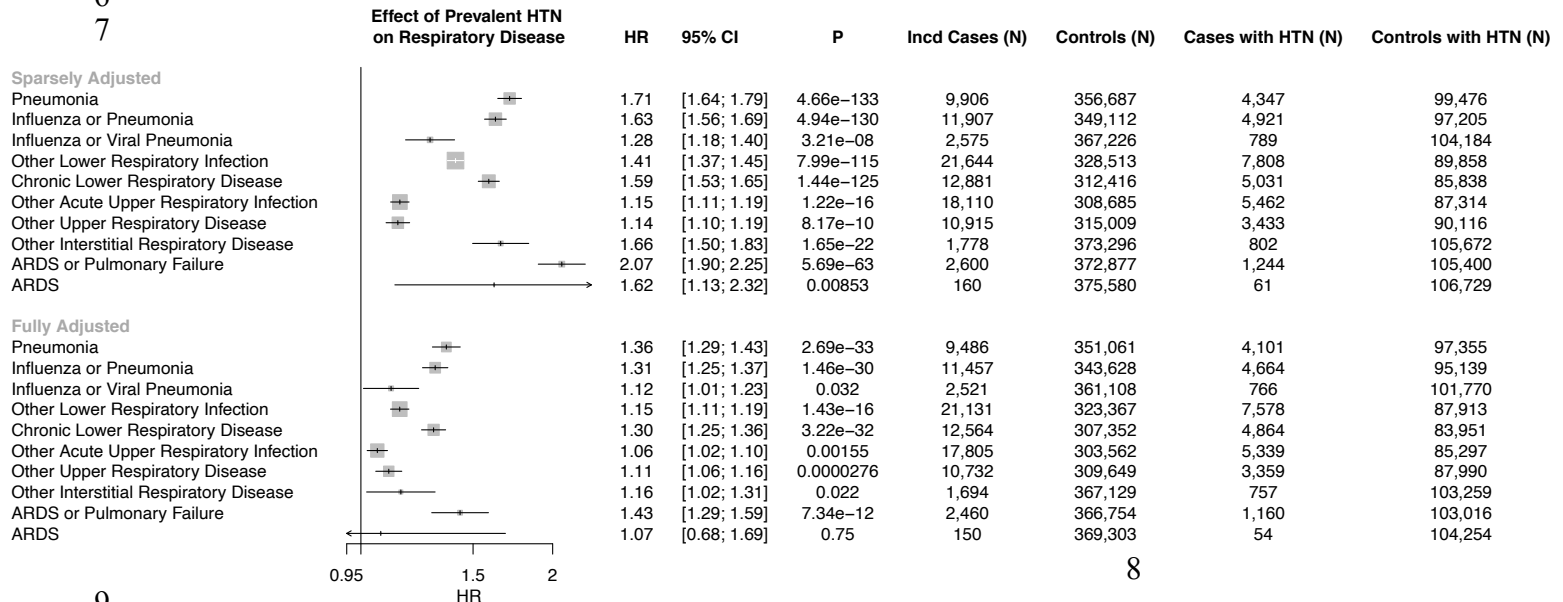
20 Our study provides evidence that hypertension directly influences the risk of pneumonia.
21 Vigilance for blood pressure monitoring and management may reduce risk for pneumonia,
22 including potentially for the ongoing COVID-19 pandemic.

1 Acknowledgments: The authors would like to acknowledge and thank the participants and staff
2 of the UK Biobank and of the ICBP consortium cohorts. This work was supported by UK
3 Biobank application number 7089.

4
5 Funding: S.M.Z. is supported by the National Institutes of Health's NHLBI under award number
6 1F30HL149180-01 and the National Institutes of Health's Medical Scientist Training Program at
7 the Yale School of Medicine. M.C.H. is supported by the National Institutes of Health
8 (T32HL094301-07). P.N. is supported by a Hassenfeld Scholar Award from the Massachusetts
9 General Hospital, and grants from the National Heart, Lung, and Blood Institute (R01HL1427,
10 R01HL148565, and R01HL148050) and Fondation Leducq (TNE-18CVD04).

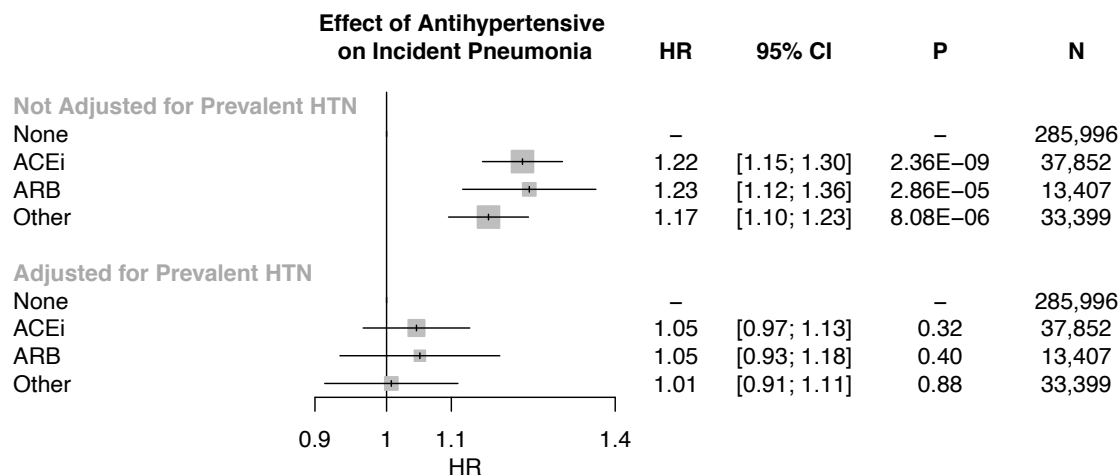
11 Disclosures: P.N. reports investigator-initiated grants from Amgen, Apple, and Boston Scientific,
12 and consulting income from Apple and Blackstone Life Sciences. The remaining authors have
13 nothing to disclose.

1 **Figure 1: Epidemiological association of prevalent hypertension with respiratory**
 2 **diseases**



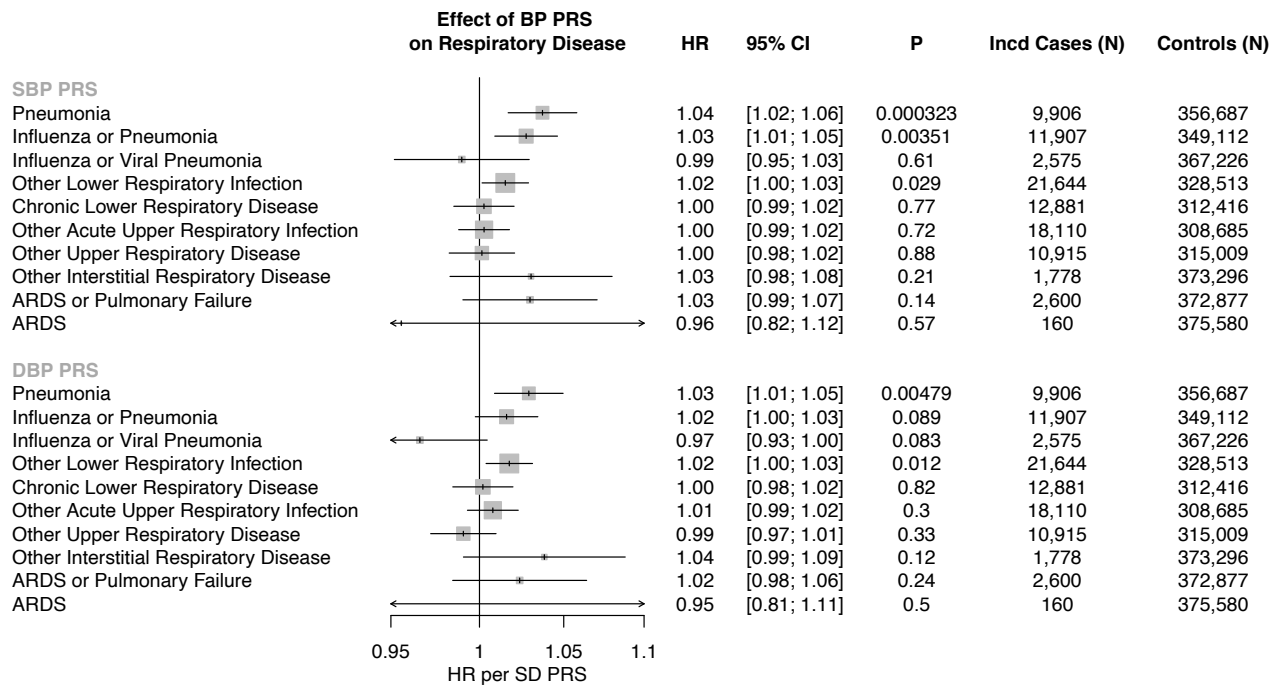
9
10
11 Association between prevalent hypertension (HTN) and incident respiratory disease is shown in
 12 a sparsely adjusted and fully adjusted model. The sparsely adjusted model is adjusted by age,
 13 age², sex, smoking status (current, prior, or never smoker), and the first ten principal
 14 components of population stratification. The fully adjusted model is additionally adjusted by
 15 prevalent coronary artery disease, prevalent diabetes, and body mass index.
 16 HTN = Hypertension, ARDS = Adult respiratory disease syndrome, HR = hazard ratio

1 **Figure 2: Epidemiological association of antihypertensive use with incident pneumonia**



2
3
4 Association of antihypertensive use with incident pneumonia, adjusted by age, age2, sex,
5 smoking status, prevalent coronary artery disease, prevalent diabetes, body mass index, and
6 the first ten principal components of population stratification, displayed with and without
7 adjusting for prevalent hypertension, suggests that the effect of antihypertensives on increased
8 risk of incident pneumonia is driven by hypertensive status.
9 ACEi = angiotensin converting enzyme inhibitor, ARB = angiotensin receptor blocker, HR =
10 hazard ratio

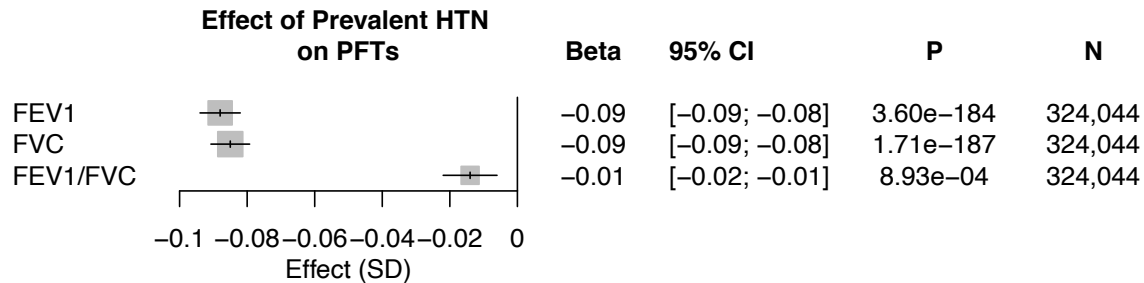
1 **Figure 3: Genetic association of blood pressure with incident respiratory disease**
 2
 3
 4



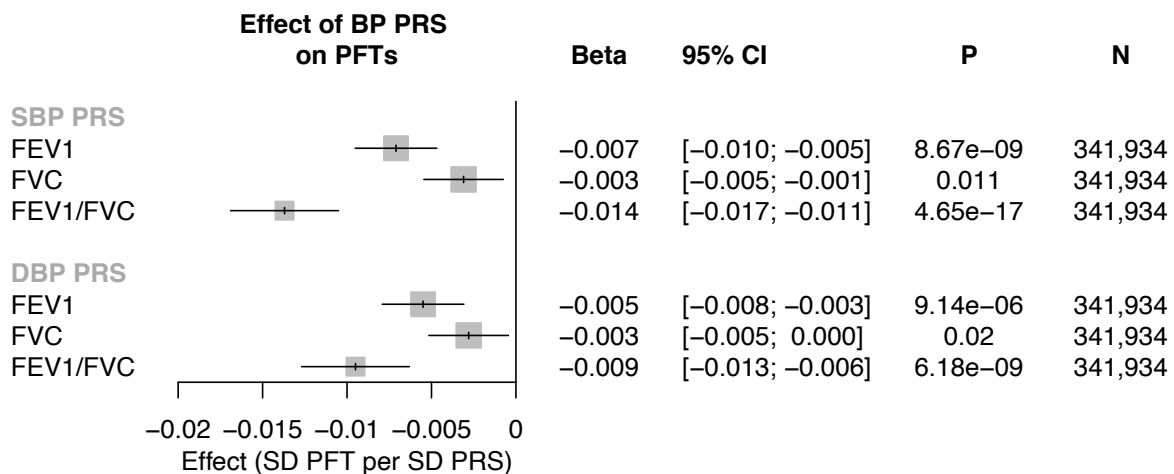
5
 6
 7
 8
 9 Association of systolic blood pressure polygenic risk score (SBP PRS) and diastolic blood
 10 pressure polygenic risk score (DBP PRS) with incident respiratory disease, adjusted for age,
 11 age², sex, smoking status, and the first ten principal components of population stratification in
 12 the UK Biobank. Effects are interpreted as hazard ratio (HR) per standard deviation (SD)
 13 increase of the respective PRS. Of note, each SD increase in the SBP PRS increases SBP by
 14 2.26mmHg, and each SD increase in the DBP PRS increases DBP by 1.32 mmHg in the UK
 15 Biobank.
 16 SBP PRS = systolic blood pressure polygenic risk score, DBP PRS = diastolic blood pressure
 17 polygenic risk score, HR = hazard ratio, SD = standard deviation
 18

1 **Figure 4: Epidemiological and genetic association of elevated blood pressure with**
 2 **pulmonary function tests**

3
 4 **A.**



5
 6 **B.**



7
 8
 9 **A)** Association of prevalent hypertension with pulmonary function tests (PFT), adjusted for age,
 10 age², sex, smoking status, prevalent coronary artery disease, prevalent diabetes, body mass
 11 index, and the first ten principal components of population stratification in the UK Biobank. **B)**
 12 Association of systolic blood pressure polygenic risk score (SBP PRS) and diastolic blood
 13 pressure polygenic risk score (DBP PRS) with pulmonary function tests (PFT), adjusted for age,
 14 age², sex, smoking status, and the first ten principal components of population stratification in
 15 the UK Biobank. Effects are interpreted as SD change in PFT per SD increase of the respective
 16 PRS. Of note, each SD increase in the SBP PRS increases SBP by 2.26mmHg, and each SD
 17 increase in the DBP PRS increases DBP by 1.32 mmHg in the UK Biobank.
 18 FEV1 = Forced expiratory volume in 1-second, FVC = Forced vital capacity, HTN =
 19 hypertension, PFT = pulmonary function test

1 **References:**

- 2
- 3 1. Olsen MH, Angell SY, Asma S, et al. A call to action and a lifecourse strategy to address the
4 global burden of raised blood pressure on current and future generations: the Lancet
5 Commission on hypertension. *Lancet* 2016;388(10060):2665-712. doi: 10.1016/S0140-
6 6736(16)31134-5 [published Online First: 2016/09/28]
- 7 2. Shen Y, Chen Y, Huang Z, et al. Associations between untraditional risk factors,
8 pneumonia/lung cancer, and hospital fatality among hypertensive men in Guangzhou
9 downtown. *Sci Rep* 2020;10(1):1425. doi: 10.1038/s41598-020-58207-z [published
10 Online First: 2020/01/31]
- 11 3. Okaishi K, Morimoto S, Fukuo K, et al. Reduction of risk of pneumonia associated with use of
12 angiotensin I converting enzyme inhibitors in elderly inpatients. *Am J Hypertens*
13 1999;12(8 Pt 1):778-83. doi: 10.1016/s0895-7061(99)00035-7 [published Online First:
14 1999/09/10]
- 15 4. Huang C, Wang Y, Li X, et al. Clinical features of patients infected with 2019 novel
16 coronavirus in Wuhan, China. *Lancet* 2020;395(10223):497-506. doi: 10.1016/S0140-
17 6736(20)30183-5 [published Online First: 2020/01/28]
- 18 5. Wang C, Liu L, Hao X, et al. Evolving Epidemiology and Impact of Non-pharmaceutical
19 Interventions on the Outbreak of Coronavirus Disease 2019 in Wuhan, China. *medRxiv*
20 2020:2020.03.03.20030593. doi: 10.1101/2020.03.03.20030593
- 21 6. Wang Z, Yang B, Li Q, et al. Clinical Features of 69 Cases with Coronavirus Disease 2019 in
22 Wuhan, China. *Clin Infect Dis* 2020 doi: 10.1093/cid/ciaa272 [published Online First:
23 2020/03/17]
- 24 7. Wu C, Chen X, Cai Y, et al. Risk Factors Associated With Acute Respiratory Distress
25 Syndrome and Death in Patients With Coronavirus Disease 2019 Pneumonia in Wuhan,
26 China. *JAMA Intern Med* 2020 doi: 10.1001/jamainternmed.2020.0994 [published Online
27 First: 2020/03/14]
- 28 8. Wosten-van Asperen RM, Lutter R, Haitsma JJ, et al. ACE mediates ventilator-induced lung
29 injury in rats via angiotensin II but not bradykinin. *Eur Respir J* 2008;31(2):363-71. doi:
30 10.1183/09031936.00060207 [published Online First: 2007/10/26]
- 31 9. Marshall RP, Webb S, Bellingan GJ, et al. Angiotensin converting enzyme insertion/deletion
32 polymorphism is associated with susceptibility and outcome in acute respiratory distress
33 syndrome. *Am J Respir Crit Care Med* 2002;166(5):646-50. doi: 10.1164/rccm.2108086
34 [published Online First: 2002/09/03]
- 35 10. Kuba K, Imai Y, Rao S, et al. A crucial role of angiotensin converting enzyme 2 (ACE2) in
36 SARS coronavirus-induced lung injury. *Nat Med* 2005;11(8):875-9. doi:
37 10.1038/nm1267 [published Online First: 2005/07/12]
- 38 11. Yang P, Gu H, Zhao Z, et al. Angiotensin-converting enzyme 2 (ACE2) mediates influenza
39 H7N9 virus-induced acute lung injury. *Sci Rep* 2014;4:7027. doi: 10.1038/srep07027
40 [published Online First: 2014/11/14]
- 41 12. Gu H, Xie Z, Li T, et al. Angiotensin-converting enzyme 2 inhibits lung injury induced by
42 respiratory syncytial virus. *Sci Rep* 2016;6:19840. doi: 10.1038/srep19840 [published
43 Online First: 2016/01/28]
- 44 13. Sodhi CP, Nguyen J, Yamaguchi Y, et al. A Dynamic Variation of Pulmonary ACE2 Is
45 Required to Modulate Neutrophilic Inflammation in Response to *Pseudomonas*
46 *aeruginosa* Lung Infection in Mice. *J Immunol* 2019;203(11):3000-12. doi:
47 10.4049/jimmunol.1900579 [published Online First: 2019/10/28]

- 1 14. Davies NM, Holmes MV, Davey Smith G. Reading Mendelian randomisation studies: a
2 guide, glossary, and checklist for clinicians. *BMJ* 2018;362:k601. doi: 10.1136/bmj.k601
3 [published Online First: 2018/07/14]
- 4 15. Evangelou E, Warren HR, Mosen-Ansorena D, et al. Genetic analysis of over 1 million
5 people identifies 535 new loci associated with blood pressure traits. *Nat Genet*
6 2018;50(10):1412-25. doi: 10.1038/s41588-018-0205-x [published Online First:
7 2018/09/19]
- 8 16. Bycroft C, Freeman C, Petkova D, et al. The UK Biobank resource with deep phenotyping
9 and genomic data. *Nature* 2018;562(7726):203-09. doi: 10.1038/s41586-018-0579-z
10 [published Online First: 2018/10/12]
- 11 17. McCarthy S, Das S, Kretzschmar W, et al. A reference panel of 64,976 haplotypes for
12 genotype imputation. *Nat Genet* 2016;48(10):1279-83. doi: 10.1038/ng.3643 [published
13 Online First: 2016/08/23]
- 14 18. Bycroft C, Freeman C, Petkova D, et al. Genome-wide genetic data on ~500,000 UK
15 Biobank participants. *bioRxiv* 2017 doi: 10.1101/166298
- 16 19. Zekavat SM, Aragam K, Emdin C, et al. Genetic Association of Finger
17 Photoplethysmography-Derived Arterial Stiffness Index With Blood Pressure and
18 Coronary Artery Disease. *Arterioscler Thromb Vasc Biol* 2019;39(6):1253-61. doi:
19 10.1161/ATVBAHA.119.312626 [published Online First: 2019/05/10]
- 20 20. Warren HR, Evangelou E, Cabrera CP, et al. Genome-wide association analysis identifies
21 novel blood pressure loci and offers biological insights into cardiovascular risk. *Nat*
22 *Genet* 2017;49(3):403-15. doi: 10.1038/ng.3768 [published Online First: 2017/01/31]
- 23 21. Tobin MD, Sheehan NA, Scurrah KJ, et al. Adjusting for treatment effects in studies of
24 quantitative traits: antihypertensive therapy and systolic blood pressure. *Stat Med*
25 2005;24(19):2911-35. doi: 10.1002/sim.2165 [published Online First: 2005/09/10]
- 26 22. Townsend P, Phillimore P., Beattie A. Health and deprivation. Inequality and the North.
27 *Health Policy* 1989;10(2)
- 28 23. Yavorska OO, Burgess S. MendelianRandomization: an R package for performing
29 Mendelian randomization analyses using summarized data. *Int J Epidemiol*
30 2017;46(6):1734-39. doi: 10.1093/ije/dyx034 [published Online First: 2017/04/12]
- 31 24. Burgess S, Bowden J, Dudbridge F, et al. Robust instrumental variable methods using
32 multiple candidate instruments with application to Mendelian randomization. *ArXiv e-*
33 *prints* 2016. <https://ui.adsabs.harvard.edu/#abs/2016arXiv160603729B> (accessed June
34 01, 2016).
- 35 25. Zhao QW, J.; Hemani, G.; Bowden, J.; Small S.D. Statistical inference in two-sample
36 summary-data Mendelian randomization using robust adjusted profile score. *ArXiv e-*
37 *prints* 2018(1801.09652)
- 38 26. Hemani G, Tilling K, Davey Smith G. Orienting the causal relationship between imprecisely
39 measured traits using GWAS summary data. *PLoS Genet* 2017;13(11):e1007081. doi:
40 10.1371/journal.pgen.1007081 [published Online First: 2017/11/18]
- 41 27. Consortium GT, Laboratory DA, Coordinating Center -Analysis Working G, et al. Genetic
42 effects on gene expression across human tissues. *Nature* 2017;550(7675):204-13. doi:
43 10.1038/nature24277 [published Online First: 2017/10/13]
- 44 28. Shen Y, Tian Z, Lu D, et al. Impact of pneumonia and lung cancer on mortality of women
45 with hypertension. *Sci Rep* 2016;6(1):20. doi: 10.1038/s41598-016-0023-2 [published
46 Online First: 2017/04/27]

- 1 29. Guzik TJ, Hoch NE, Brown KA, et al. Role of the T cell in the genesis of angiotensin II
2 induced hypertension and vascular dysfunction. *J Exp Med* 2007;204(10):2449-60. doi:
3 10.1084/jem.20070657 [published Online First: 2007/09/19]
- 4 30. Wenzel P, Knorr M, Kossmann S, et al. Lysozyme M-positive monocytes mediate
5 angiotensin II-induced arterial hypertension and vascular dysfunction. *Circulation*
6 2011;124(12):1370-81. doi: 10.1161/CIRCULATIONAHA.111.034470 [published
7 Online First: 2011/08/31]
- 8 31. Morton J, Coles B, Wright K, et al. Circulating neutrophils maintain physiological blood
9 pressure by suppressing bacteria and IFN γ -dependent iNOS expression in the
10 vasculature of healthy mice. *Blood* 2008;111(10):5187-94. doi: 10.1182/blood-2007-10-
11 117283 [published Online First: 2008/02/19]
- 12 32. Siedlinski M, Jozefczuk E, Xu X, et al. White Blood Cells and Blood Pressure: A Mendelian
13 Randomization Study. *Circulation* 2020 doi: 10.1161/CIRCULATIONAHA.119.045102
14 [published Online First: 2020/03/10]
- 15 33. Speyer CL, Neff TA, Warner RL, et al. Regulatory effects of iNOS on acute lung
16 inflammatory responses in mice. *Am J Pathol* 2003;163(6):2319-28. doi: 10.1016/S0002-
17 9440(10)63588-2 [published Online First: 2003/11/25]
- 18 34. Selemidis S, Seow HJ, Broughton BR, et al. Nox1 oxidase suppresses influenza a virus-
19 induced lung inflammation and oxidative stress. *PLoS One* 2013;8(4):e60792. doi:
20 10.1371/journal.pone.0060792 [published Online First: 2013/04/12]
- 21 35. Jankowich MD, Taveira T, Wu WC. Decreased lung function is associated with increased
22 arterial stiffness as measured by peripheral pulse pressure: data from NHANES III. *Am J*
23 *Hypertens* 2010;23(6):614-9. doi: 10.1038/ajh.2010.37 [published Online First:
24 2010/03/13]
- 25 36. Amaral AF, Patel J, Gnatiuc L, et al. Association of pulse wave velocity with total lung
26 capacity: A cross-sectional analysis of the BOLD London study. *Respir Med*
27 2015;109(12):1569-75. doi: 10.1016/j.rmed.2015.10.016 [published Online First:
28 2015/11/11]
- 29 37. Duprez DA, Hearst MO, Lutsey PL, et al. Associations among lung function, arterial
30 elasticity, and circulating endothelial and inflammation markers: the multiethnic study of
31 atherosclerosis. *Hypertension* 2013;61(2):542-8. doi:
32 10.1161/HYPERTENSIONAHA.111.00272 [published Online First: 2013/01/04]
- 33 38. Mullerova H, Agusti A, Erqou S, et al. Cardiovascular comorbidity in COPD: systematic
34 literature review. *Chest* 2013;144(4):1163-78. doi: 10.1378/chest.12-2847 [published
35 Online First: 2013/06/01]
- 36 39. Zhu Z, Wang X, Li X, et al. Genetic overlap of chronic obstructive pulmonary disease and
37 cardiovascular disease-related traits: a large-scale genome-wide cross-trait analysis.
38 *Respir Res* 2019;20(1):64. doi: 10.1186/s12931-019-1036-8 [published Online First:
39 2019/04/04]
- 40 40. Iyer KS, Newell JD, Jr., Jin D, et al. Quantitative Dual-Energy Computed Tomography
41 Supports a Vascular Etiology of Smoking-induced Inflammatory Lung Disease. *Am J*
42 *Respir Crit Care Med* 2016;193(6):652-61. doi: 10.1164/rccm.201506-1196OC
43 [published Online First: 2015/11/17]
- 44 41. Barnes PJ. Inflammatory mechanisms in patients with chronic obstructive pulmonary disease.
45 *J Allergy Clin Immunol* 2016;138(1):16-27. doi: 10.1016/j.jaci.2016.05.011 [published
46 Online First: 2016/07/05]

- 1 42. Caldeira D, Alarcao J, Vaz-Carneiro A, et al. Risk of pneumonia associated with use of
2 angiotensin converting enzyme inhibitors and angiotensin receptor blockers: systematic
3 review and meta-analysis. *BMJ* 2012;345:e4260. doi: 10.1136/bmj.e4260 [published
4 Online First: 2012/07/13]
- 5 43. Fang L, Karakiulakis G, Roth M. Are patients with hypertension and diabetes mellitus at
6 increased risk for COVID-19 infection? *Lancet Respir Med* 2020;8(4):e21. doi:
7 10.1016/S2213-2600(20)30116-8 [published Online First: 2020/03/15]
- 8 44. Vaduganathan M, Vardeny O, Michel T, et al. Renin-Angiotensin-Aldosterone System
9 Inhibitors in Patients with Covid-19. *N Engl J Med* 2020 doi: 10.1056/NEJMSr2005760
10 [published Online First: 2020/04/01]
- 11 45. Danser AHJ, Epstein M, Battlle D. Renin-Angiotensin System Blockers and the COVID-19
12 Pandemic: At Present There Is No Evidence to Abandon Renin-Angiotensin System
13 Blockers. *Hypertension* 2020:HYPERTENSIONAHA12015082. doi:
14 10.1161/HYPERTENSIONAHA.120.15082 [published Online First: 2020/03/27]
- 15 46. Boszhurt BKRHB. HFSA/ACC/AHA statement addresses concerns re: using RAAS
16 antagonists in COVID-19: AHA Science News; 2020 [Available from:
17 [https://professional.heart.org/professional/ScienceNews/UCM_505836_HFSAACCAHA](https://professional.heart.org/professional/ScienceNews/UCM_505836_HFSAACCAHA_statement-addresses-concerns-re-using-RAAS-antagonists-in-COVID.jsp)
18 [statement-addresses-concerns-re-using-RAAS-antagonists-in-COVID.jsp](https://professional.heart.org/professional/ScienceNews/UCM_505836_HFSAACCAHA_statement-addresses-concerns-re-using-RAAS-antagonists-in-COVID.jsp)].
- 19 47. G. S. Position Statement of the ESC Council on Hypertension on ACE-Inhibitors and
20 Angiotensin Receptor Blockers: European Society of Cardiology; 2020 [Available from:
21 [https://www.escardio.org/Councils/Council-on-Hypertension-\(CHT\)/News/position-](https://www.escardio.org/Councils/Council-on-Hypertension-(CHT)/News/position-statement-of-the-esc-council-on-hypertension-on-ace-inhibitors-and-ang)
22 [statement-of-the-esc-council-on-hypertension-on-ace-inhibitors-and-ang](https://www.escardio.org/Councils/Council-on-Hypertension-(CHT)/News/position-statement-of-the-esc-council-on-hypertension-on-ace-inhibitors-and-ang)].
- 23 48. Group SR, Wright JT, Jr., Williamson JD, et al. A Randomized Trial of Intensive versus
24 Standard Blood-Pressure Control. *N Engl J Med* 2015;373(22):2103-16. doi:
25 10.1056/NEJMoa1511939 [published Online First: 2015/11/10]
- 26 49. Zhang P, Zhu L, Cai J, et al. Association of Inpatient Use of Angiotensin Converting Enzyme
27 Inhibitors and Angiotensin II Receptor Blockers with Mortality Among Patients With
28 Hypertension Hospitalized With COVID-19. *Circ Res* 2020 doi:
29 10.1161/CIRCRESAHA.120.317134 [published Online First: 2020/04/18]
- 30 50. Holmes MV, Ala-Korpela M, Smith GD. Mendelian randomization in cardiometabolic
31 disease: challenges in evaluating causality. *Nat Rev Cardiol* 2017;14(10):577-90. doi:
32 10.1038/nrcardio.2017.78 [published Online First: 2017/06/02]
- 33 51. Bennett DA, Holmes MV. Mendelian randomisation in cardiovascular research: an
34 introduction for clinicians. *Heart* 2017;103(18):1400-07. doi: 10.1136/heartjnl-2016-
35 310605 [published Online First: 2017/06/10]
- 36 52. Paternoster L, Tilling K, Davey Smith G. Genetic epidemiology and Mendelian
37 randomization for informing disease therapeutics: Conceptual and methodological
38 challenges. *PLoS Genet* 2017;13(10):e1006944. doi: 10.1371/journal.pgen.1006944
39 [published Online First: 2017/10/06]

40