

Isolated Systolic and Diastolic Hypertension by the 2017 ACC/AHA Guidelines and Risk of Cardiovascular Disease: A Large Prospective Cohort Study

ABSTRACT

IMPORTANCE The 2017 American College of Cardiology/American Heart Association (ACC/AHA) blood pressure (BP) guidelines lowered the hypertension threshold from a systolic blood pressure/diastolic blood pressure level of $\geq 140/90$ mm Hg to $\geq 130/80$ mm Hg. The cardiovascular impact of isolated systolic hypertension (ISH) and isolated diastolic hypertension (IDH) under the new definition remains unclear.

OBJECTIVE To examine the associations of ISH and IDH defined by the 2017 ACC/AHA guidelines with risk of cardiovascular disease (CVD) among the UK population.

DESIGN, SETTING, AND PARTICIPANTS We used data from the UK Biobank study, which is a prospective population-based cohort study. Participants were categorized into 5 groups: normal BP, normal high BP, ISH, IDH and systolic and diastolic hypertension (SDH).

MAIN OUTCOMES AND MEASURES The primary endpoint for this study was the composite of nonfatal myocardial infarction (MI), nonfatal ischemic stroke (IS), nonfatal haemorrhagic stroke (HS) and CVD death. We also explored the results for the above mentioned CVD outcomes separately. Baseline BP measurements were obtained twice after the participant had been at rest for at least 5 minutes in a seated position.

RESULTS We included 470,625 participants who were free of CVD at baseline and had available data on BP measures. During a median follow-up of 8.1 years, 13,157 CVD events were recorded, including 6,865 nonfatal MI, 3,415 nonfatal ISs, 1,118 nonfatal HSs, and 2,971 CVD deaths. According to the hypertension threshold of $\geq 130/80$ mm Hg by the ACC/AHA guidelines, both ISH (HR 1.35, 95% CI 1.24-1.46) and IDH (HR 1.22, 95% CI 1.11-1.36) were significantly associated with a higher overall CVD risk as compared with normal BP. ISH was associated with most CVD

risk, except for IS, while the excess CVD risk associated with IDH appeared to be driven mainly by MI. We found heterogeneity by sex and age regarding the effects of IDH on overall CVD risk, with significant associations in younger adults (age < 60 years) and women and null associations in men and older adults (age \geq 60 years).

CONCLUSIONS AND RELEVANCE Both ISH and IDH were associated with an increased risk of CVD among the UK population according to the ACC/AHA BP guidelines. Further research is needed to identify participants with IDH who have a particularly risk for developing CVD.

Key points

Question

What are the associations of isolated systolic hypertension (ISH) and isolated diastolic hypertension (IDH) by the 2017 ACC/AHA guidelines with CVD risk among the UK population?

Findings

In this prospective population-based cohort study of 470,625 UK participants, we found that compared with normotensive participants, those with ISH or IDH both had higher risk of overall CVD outcome. However, for participants with IDH, most CVD risk was driven by myocardial infarction and significant associations were observed in younger adults (age < 60 years) and women only.

Meaning

Our results indicate that by using the lower hypertension threshold by the 2017 ACC/AHA guidelines, both ISH and IDH were linked to a higher risk of CVD. Yet, results varied across age and sex for IDH, suggesting that more research is needed to identify participants with IDH who are at especially greater risk for developing CVD.

Hypertension can be diagnosed based on singular and combined elevation of systolic blood pressure (SBP) and diastolic blood pressure (DBP). People who fulfil only the SBP or only the DBP hypertension criteria are categorized as having isolated systolic hypertension (ISH) or isolated diastolic hypertension (IDH), respectively ¹.

In 2017, the American College of Cardiology (ACC)/American Heart Association (AHA) lowered the hypertension criterion from an SBP/DBP level of $\geq 140/90$ mm Hg to a threshold of $\geq 130/80$ mm Hg ². Since the release of the new guidelines, a number of studies have explored the change in prevalent hypertension in different populations ³⁻⁶ or cardiovascular disease (CVD) risk associated with the newly defined stage 1 hypertension (130-139/80-89 mm Hg) ^{7, 8}. To date, however, very few studies have focused on the impact of hypertension subtypes (e.g., ISH, IDH) defined by the ACC/AHA guidelines on CVD risk. A recent study of the US outpatient population reported that both systolic and diastolic hypertension independently predicted CVD events ⁹, regardless of BP cutoffs of 130/80 mmHg or 140/90 mmHg. However, this study did not explore the associations between hypertension subtypes and CVD risk. On the other hand, a study of multiple cohorts of US adults tried to clarify the associations between IDH and CVD risk by either hypertension definition ¹⁰, but the results for ISH were not available in that study.

Indeed, evidence regarding the associations of the redefined ISH and IDH by the 2017 ACC/AHA guidelines with CVD risk is limited, and the conclusions remained unclear. To fill the gap in the previous research, we used data from the UK Biobank to explore the associations of ISH and IDH with risk of CVD, using the BP threshold recommended by the 2017 ACC/AHA guidelines.

Methods

Study Population

Data for this study were derived from the UK Biobank study. The study design of the UK Biobank study has been previously reported in detail ^{11, 12}. In brief, the UK Biobank study is a large prospective cohort study that recruited over 500,000 participants aged 40-69 years from 2006-2010 at baseline. It collected extensive

phenotypic and genotypic data from 22 assessment centres across England, Wales, and Scotland, covering a variety of different socioeconomic and ethnic settings. In the present study, we excluded 1,243 individuals with missing values for SBP or DBP, 29,329 individuals with prevalent CVD (angina, myocardial infarction (MI) and stroke) at baseline and 1,240 individuals who were lost to follow-up. The final sample for analysis included 470,625 participants.

The UK Biobank has ethical approval from the Northwest Multi-Center Research Ethics Committee, and written informed consent was obtained from all participants.

Assessment of Blood Pressure

Baseline BP measurements were obtained twice after the participant had been at rest for at least 5 minutes in a seated position using a digital BP monitor (Omron HEM-7015IT; OMRON Healthcare Europe B.V., Hoofddorp, Netherlands) with a suitably sized cuff. Mean SBP and DBP values were calculated from 2 automated ($n=439,829$) or 2 manual ($n=30,796$) BP measurements by trained nurses.

Assessment of Outcomes

The primary endpoint for this study was the composite of nonfatal MI, nonfatal ischaemic stroke (IS), nonfatal haemorrhagic stroke (HS) and CVD death. We also explored the results for the above CVD outcomes separately. Information on CVD events and the timing of events was identified by linking to the Scottish Morbidity Records for participants from Scotland and health episode statistics for participants from England and Wales. The date and cause of death were identified by linking to the death registries of the National Health Service (NHS) Information Centre for participants from England and Wales and the NHS Central Register Scotland for participants from Scotland¹². At the time of analysis, hospital admission data were available up to March 29, 2017, and mortality data were available up to February 12, 2018 for England and Wales and August 12, 2016 for Scotland; therefore, these dates were used as the end of follow-up. Person-time was calculated from the date of baseline assessment to the date of diagnosis of the event, death, or the end of

follow-up, whichever occurred first.

The International Classification of Diseases, tenth revision (ICD-10) codes were included in death records, while ICD-10 and International Classification of Diseases, ninth revision (ICD-9) codes were used in medical records. MI was defined as ICD-9 codes 410-414 and ICD-10 codes I20-I25. IS was defined as ICD-9 codes 433-434 and ICD-10 code I63; and HS was defined as ICD-9 codes 430-432 and ICD-10 codes I60-I62¹³. CVD death was defined as ICD-10 codes I00-I99.

Assessment of Covariates

We used a baseline touch screen questionnaire to collect information on the following potential confounders: sociodemographic information (age, sex, ethnicity); area-based social deprivation (Townsend score, a composite measure of socioeconomic deprivation and household income); lifestyle (smoking, drinking, dietary habits and physical activity); and self-reported medical conditions (medications to treat high cholesterol and hypertension; history of diabetes and long-standing illness). A non-stretchable tape was used to measure height, and the Tanita BC-418 MA body analyser was used to measure weight¹⁴. Body mass index (BMI) was calculated as weight in kilograms divided by height in metres squared (kg/m^2). Circulating lipid profiles and serum cystatin C were also used for analysis. Long-standing illness was measured using the following question: “Do you have any long-standing illness, disability or infirmity?”. The ion-selective electrode method was used to measure sodium levels in stored urine samples. Dietary habits were assessed through a food frequency questionnaire. The healthy diet score was calculated using the medians of several dietary factors as follows¹³: red meat intake less than three times each week; vegetable intake at least four tablespoons each day; fruit intake of at least three pieces each day; fish intake of at least four times each week; cereal intake of at least five bowls each week; and urinary sodium concentration (measured in stored urine samples using ion-selective electrode method¹⁵) less than 68.3 mmol/L. Each favourable diet factor was assigned a score of 1 point, resulting in a total diet score ranging from 0 to 6. The estimated glomerular filtration rate (eGFR) was calculated

by the Chronic Kidney Disease Epidemiology Collaboration (CKD–EPI) equation using serum cystatin C equations as previously reported ¹⁶. Physical activity was assessed by the International Physical Activity Questionnaire short form. We used the summed metabolic equivalents of energy (METs) per week for all activity in the analysis.

Statistical Analysis

Continuous variables are presented as the means \pm standard deviations (SDs), while categorical variables are presented as frequencies (%). Participants were stratified into 5 BP categories: 1) normal (SBP <120 mm Hg and DBP <80 mm Hg), 2) normal high (SBP 120 to 129 mm Hg and DBP <80 mm Hg), 3) ISH (SBP \geq 130 mm Hg and DBP <80 mm Hg), 4) IDH (SBP <130 mm Hg and DBP \geq 80 mm Hg), and 5) a combination of ISH and IDH (SDH) (SBP \geq 130 mm Hg and DBP \geq 80 mm Hg). Participants with normal BP were used as the reference. For supplementary analysis, we combined the normal BP group and normal high group, resulting in a new normal BP category as the reference (<130/80 mm Hg). To facilitate comparisons between guidelines, we also divided the sample into 5 categories by using the hypertension threshold (\geq 140/90 mm Hg) recommended by the National Institute of Clinical Excellence (NICE) guidelines in the UK.

Multivariable Cox regression models were used to calculate the hazard ratios (HRs) and 95% confidence intervals (CIs) for the associations between hypertension subtypes and CVD risk. Responses of “not known” or “prefer not to answer” to the covariates were considered missing values. Missing values accounted for <6% of all the covariates. Participants with missing values for any of the covariates were assigned to a separate “unknown” category. Two models were used to account for potential confounders. Model 1 included age (continuous) and sex. Model 2 further included ethnicity (white, mixed, Asian or Asian British, black or black British, Chinese, or other ethnic group), Townsend scores (in quintiles), BMI (in quintiles), smoking (never, previous, current), alcohol consumption (daily or almost daily, three or four times a week, once or twice a week, one to three times a month, special

occasions only, never), healthy diet score, hypertensive medication use, cholesterol-lowering medication use, history of diabetes, eGFR and long-standing illness.

For the subgroup analysis, we examined the associations between BP categories and the primary outcome stratified by age (<60 years or \geq 60 years) and sex. Several sensitivity analyses were performed to test the robustness of the primary result: 1) additional adjustment for physical activity; 2) additional adjustment for lipid profile, including serum concentrations of low-density lipoprotein cholesterol, high-density lipoprotein cholesterol and triglyceride; 3) combination of the aforementioned sensitivity analyses; 4) exclusion of those who had CVD events in the first two years of follow-up; 5) exclusion of those with missing variables; 6) exclusion of those taking antihypertensive medications; and 7) additional adjustment for baseline SBP or DBP for IDH or ISH, respectively.

Analyses were conducted using Stata version 14.0 (College Station, Texas). A *P*-value <0.05 was considered indicative of statistical significance.

Results

Baseline Characteristics

This study consisted of 470,625 participants (mean age 57 years), of whom 208,231 (44.3%) were men. The percentages of participants with ISH, IDH, and SDH were 15.9%, 7.5%, and 51.8% under the ACC/AHA guidelines, and 25.9%, 3.2%, and 21.3% under the NICE guidelines (Fig. 1).

Baseline characteristics of the study participants by normal BP status and hypertension subtypes are presented in Table 1. The mean age of the study participants with ISH was 59.3 years, while those with IDH had a mean age of 52.5 years. As compared to participants with normal BP, those with all other hypertension subtypes had a higher mean SBP, DBP and BMI. Moreover, hypertensive participants were more likely to have lower Townsend scores (except for IDH), take hypertensive and cholesterol-lowering medications, and have a history of diabetes or long-term illness, but they were less likely to be current smokers and have a lower eGFR level.

With the exception of those with ISH, hypertensive participants also tended to have lower healthy diet scores.

Associations between Hypertension Subtypes and Risk of CVD

During a median follow-up of 8.1 years, a total of 13,157 CVD events were recorded, including 6,865 nonfatal MI, 3,415 nonfatal IS, 1,118 nonfatal HS, and 2,971 CVD deaths. Using the hypertension cutoff of $\geq 130/80$ mm Hg according to the ACC/AHA guideline, the multivariable-adjusted HRs (95% CI) of overall CVD outcome were 1.08 (0.98-1.18) for high normal BP, 1.35 (1.24-1.46) for ISH, 1.22 (1.11-1.36) for IDH, and 1.51 (1.40-1.62) for SDH, respectively, compared with those with normal BP (Figure 2). Regarding the associations between ISH and individual CVD outcomes (Figure 3), a null association was found for nonfatal IS (HR 1.15, 95% CI 0.98-1.34), whereas significant results were observed for nonfatal MI (HR 1.45, 95% CI 1.29-1.63), nonfatal HS (HR 1.53, 95% CI 1.18-2.00), and CVD mortality (HR 1.23, 95% CI 1.04-1.46). Moreover, for IDH, only the result for nonfatal MI was evident (HR 1.27, 95% CI 1.10-1.47). The results for SDH were consistently significant for all CVD events. For the NICE guideline (cutoff of $\geq 140/90$ mm Hg) (Figure 2 and Supplemental Figure 1), compared with those with normal BP, all hypertension phenotypes were associated with higher risks of all CVDs, with the exception of CVD mortality, indicating a null association for IDH (HR 1.15, 95% CI 0.88-1.49). We analysed the association of BP as a continuous variable with the risk of CVD by different baseline BP cutoffs (Supplemental Table 1). SBP was consistently associated with higher risks of CVD regardless of DBP cutoffs (DBP < 80 mm Hg or DBP < 90 mm Hg). We observed significant results for overall CVD and MI associated with DBP as a continuous variable, but not for IS, HS or CVD death with the SBP cutoff of < 130 mm Hg; however, the risks for IS and HS became evident when using the SBP cutoff of < 140 mm Hg, even though the non-significant result for CVD death remained unchanged.

Subgroup analyses by age showed that the primary results were consistent for the young adults (aged < 60 years), while for older adults (aged ≥ 60 years), the primary results remained similar for ISH and SDH but lost statistical significance for IDH (HR

1.08, 95% CI 0.94-1.28). Notably, we also found that men with IDH did not have a higher risk of CVD (HR 1.07, 95% CI 0.94-1.23), whereas the results were evident for all hypertension subtypes among women (Supplemental Figure 2).

Exploratory Analysis and Sensitivity Analysis

Redefining the normal BP group by combining the original normal group and high normal group did not substantially change the results, except for the link between IDH and CVD death, which turned out to be statistically significant (HR 1.23, 95% CI 1.02-1.48) (Supplemental Figure 3). Sensitivity analysis yielded similar results after additional adjustment for physical activity, serum lipids, or a combination of the aforementioned analyses. Exclusion of participants with any missing covariates or those taking antihypertensive medications also yielded similar results (Supplemental Table 2). Of note, the significant results remained unchanged after additional adjustment for baseline SBP for IDH or baseline DBP for ISH, regardless of hypertension definition (Supplemental Table 3).

Discussion

The present study evaluated the associations of different subtypes of hypertension, defined by the 2017 ACC/AHA guideline, with the risk of CVD outcomes in a large prospective cohort study of the UK population. We found that the excess overall CVD risk was evident among participants with ISH or IDH compared to their normotensive counterparts. The findings regarding ISH and IDH persisted across a series of sensitivity analyses, even after taking the baseline DBP and SBP into account. We found that the effects of IDH on CVD were stronger in women and younger adults (age <60 years) and null in men and older adults (age ≥60 years).

Few prospective studies have assessed the associations between ISH and IDH and CVD risk, especially in the context of the new definition according to the ACC/AHA guidelines. Flint *et al.* examined the impact of outpatient BP on CVD risk among 1.3 million US adults (median age 53 years) and found that both SBP and DBP independently predicted adverse CVD events, regardless of the definition of hypertension (≥140/90 mm Hg or ≥130/80 mm Hg)⁹. Unfortunately, this study did

not report the results for isolated hypertension as simple binary variables. Yano *et al.* reported that among 27,081 younger and middle-aged US adults (mean age, 34 years), all hypertension subtypes, defined by the threshold of $\geq 140/90$ mm Hg, were associated with an increased risk of CVD¹⁷; similar findings were also reported from a cohort study of 169,871 Chinese men and women (aged ≥ 40 years)¹⁸. As most of the hypertension phenotypes were defined by the BP cutoff of $\geq 140/90$ mm Hg in the above studies, their results may not be applicable to the current ACC/AHA guidelines.

Although a few studies have found positive results for IDH under the BP threshold of $\geq 140/90$ mm Hg^{17,18}, this was not the case in many previous studies. In fact, while the detrimental effects of ISH and SDH on CVD are without much controversy, the situation is less clear for IDH — the existing evidence regarding this issue is somewhat mixed. For instance, a recent study by McEvoy *et al.* failed to find significant results by either hypertension definition for IDH. In that study, a comprehensive analysis was performed to explore the associations of IDH with the risk of CVD among US adults from several cohort studies (ARIC, NHANES and CLUE II)¹⁰. The uncertainty in the CVD risk related to IDH was also reflected by the null associations in other studies¹⁹⁻²². The current study showed that by using the threshold of 130/80 mm Hg, ISH was a significant predictor of most CVD events, yet the excess CVD risk associated with IDH appeared to be driven mainly by MI; the associations between IDH and other CVD outcomes (IS, HS, CVD death) were not statistically significant. The lack of statistically significant associations of IDH with some of the CVD outcomes calls into question the pathogenicity of IDH.

Differences in biological processes may be responsible for the stronger effects of ISH than IDH on CVD risk^{23,24}. ISH is characterized by higher stroke volume and/or aortic stiffness, and the occurrence of this phenotype is believed to reflect the high BP for multiple organs (e.g., brain, heart, and kidneys)^{25,26}, which may result in poorer outcomes. Additionally, ISH is more likely to be the end point of SBP and DBP, both of which would be risk factors for CVD²⁷. IDH is a consequence of an increase in arteriolar resistance only^{21,23}; as a result, participants with IDH may bear less vascular burden than those with ISH. In fact, a clear understanding of the

pathophysiologic mechanisms underlying different hypertension phenotypes may help establish appropriate treatment recommendations in clinical practice.

An important finding of this study is that the increased risks of CVD associated with IDH were mainly concentrated in women or those aged <60 years. In general, women differ significantly from men in central arterial pressure and have higher vascular loading conditions²⁸⁻³⁰; in addition, the association between arterial stiffness and left ventricular diastolic function appeared to be stronger in women than in men³¹, which may collectively explain the sex-specific associations. A study of the UK Biobank also confirmed that BP was more strongly associated with MI in women than in men³². On the other hand, previous studies have found that ISH is most common among elderly individuals, while IDH is more frequent in young and middle-aged persons¹. As the CVD risk increases by age, the age-specific prevalence of ISH and IDH may result in the differences in the CVD risks associated with these two phenotypes. In summary, these findings may indicate that tailored strategies for hypertension management would be needed based on age and sex.

Strengths and Limitations

To the best of our knowledge, this is the first study to verify the validation of ISH and IDH according to the ACC/AHA guideline in predicting CVD risk. The strength of the study is that the cohort is large and has a median follow-up period of 8.1 years and 13,157 CVD events, which allow us to perform analyses by subtypes of hypertension and CVD events. A few limitations should also be acknowledged. First, BP measurements were collected only at a single visit, and changes over time would attenuate findings towards the null hypothesis, causing underestimation of the true associations. Second, the potential risk of bias due to “white-coat” effects should also be taken into account, as a patient’s BP measured in a clinic or office may be higher than their ambulatory pressure. Third, the study was based on a sample of the UK population, which limits the generalizability of the findings to other populations.

Conclusions

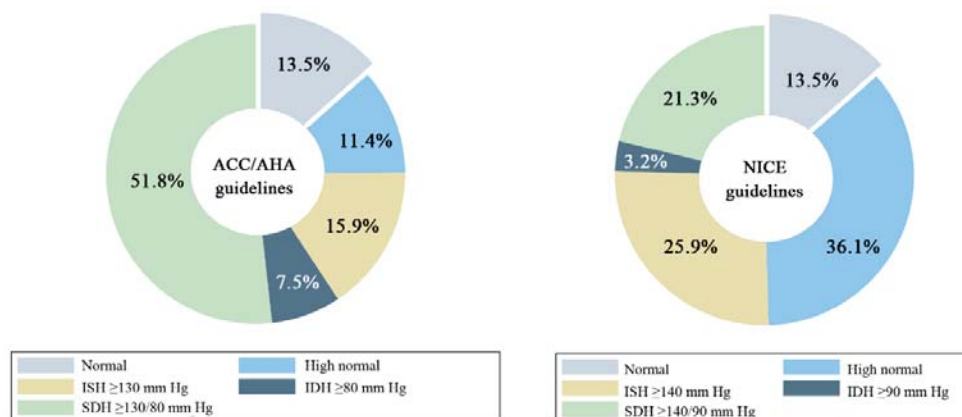
Both ISH and IDH were associated with an increased risk of CVD among the UK population according to the ACC/AHA BP guidelines. Further research is needed to identify participants with IDH who have a particularly risk for developing CVD.

Table 1. Baseline characteristics by normal BP status and hypertension subtype according to the ACC/AHA guidelines.

Characteristics	Normal	High normal	ISH	IDH	SDH
No. of participants	63,395	53,611	74,634	35,332	243,653
Age, y	52.1±7.8	54.6±8.1	59.3±7.5	52.5±7.6	57.3±7.7
Men	24.7	39.6	41.9	38.4	51.9
BMI, kg/m ²	25.0±4.0	25.9±4.1	26.6±4.3	28.0±5.1	28.3±4.8
SBP, mm Hg	111.5±6.2	124.4±2.8	142.4±11.5	123.7±4.7	151.9±15.7
DBP, mm Hg	69.4±5.8	73.1±4.7	74.3±4.4	83.9±3.8	90.1±7.5
Ethnicity					
White	92.7%	94.3%	95.9%	92.1%	94.3%
Mixed	0.9%	0.7%	0.4%	0.8%	0.5%
Asian or Asian British	2.4%	1.8%	1.4%	2.7%	1.8%
Black or black British	1.6%	1.4%	1.0%	2.3%	1.8%
Chinese	0.6%	0.3%	0.2%	0.5%	0.3%
Other ethnic group	1.3%	1.0%	0.6%	1.3%	0.8%
Townsend score*	-1.1±3.2	-1.3±3.1	-1.5±3.0	-1.1±3.2	-1.4±3.0
Alcohol drinking					
Never	9.0%	8.2%	8.5%	8.2%	7.1%
Special occasions only	12.6%	11.7%	12.2%	12.5%	10.6%
One to three times a month	13.4%	11.9%	11.2%	12.1%	10.3%
One or two times a week	27.3%	26.7%	25.5%	27.2%	25.3%
Three or four times a week	22.1%	23.1%	22.5%	22.2%	24.0%
Daily or almost daily	15.4%	18.3%	19.9%	17.7%	22.6%
Smoking					
Never	57.2%	57.0%	54.5%	56.6%	54.9%
Former	29.6%	31.3%	35.4%	30.5%	35.1%
Current	12.8%	11.3%	9.6%	12.4%	9.5%
Healthy diet score	3.0±1.4	3.0±1.4	3.1±1.4	2.8±1.4	2.8±1.4
Hypertensive medication use	2.7%	4.3%	9.7%	7.3%	14.1%
Cholesterol-lowering medication use	6.1%	9.8%	18.1%	9.5%	15.5%
Diabetes	3.3%	4.8%	8.9%	4.8%	6.6%
Long-term illness	25.2%	26.9%	31.7%	29.6%	30.2%
eGFR, ml min ⁻¹ per 1.73 m ²	94.2±15.2	91.5±15.6	86.4±16.2	92.0±15.8	87.3±15.6

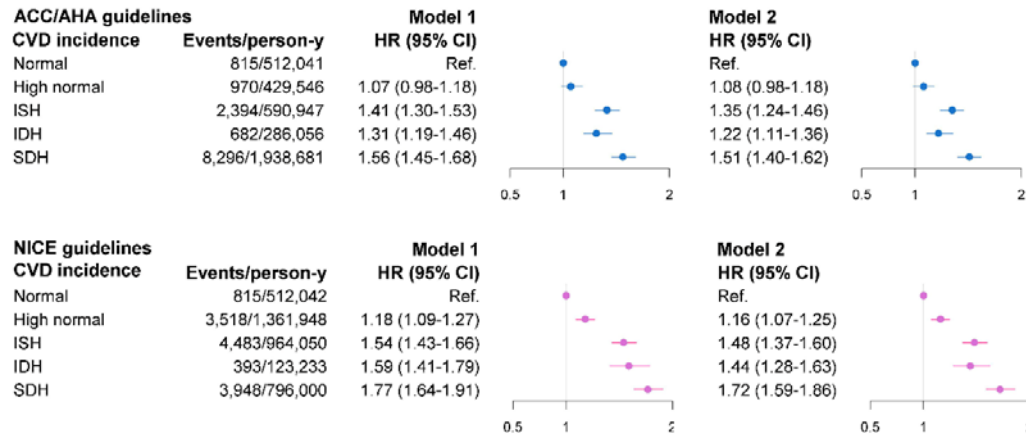
Abbreviations: ISH, isolated systolic hypertension; IDH, isolated diastolic hypertension; SDH, systolic and diastolic hypertension. *Positive values indicate areas with high material deprivation, whereas those with negative values indicate relative affluence.

Figure 1. Participants meeting the definitions for hypertension subtypes by different guidelines.



Abbreviations: ISH, isolated systolic hypertension; IDH, isolated diastolic hypertension; SDH, systolic and diastolic hypertension.

Figure 2. Associations of hypertension subtype according to the ACC/AHA guidelines and NICE guidelines with the risk of CVD.



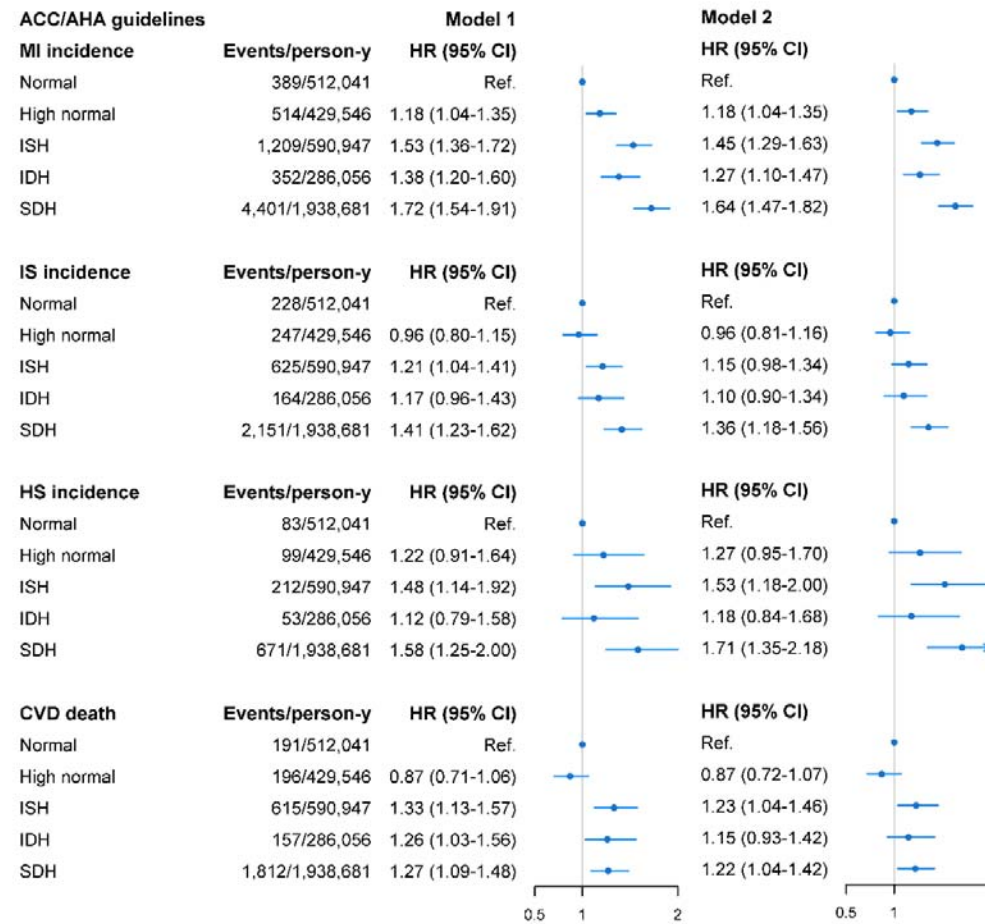
*With a BP cutoff of 140/90 mm Hg according to the NICE guidelines, participants were stratified into 5 mutually exclusive BP categories: 1) normal (SBP <130 mm Hg and DBP <85 mm Hg); 2) high normal (SBP 130 to 139 mm Hg and DBP 85 to 89 mm Hg, SBP 130 to 139 mm Hg and DBP <85 mm Hg, or SBP <130 mm Hg and DBP 85 to 89 mm Hg); 3) ISH (SBP \geq 140 mm Hg and DBP <90 mm Hg); 4) IDH (SBP <140 mm Hg and DBP \geq 90 mm Hg); and 5) SDH (SBP \geq 140 mm Hg and DBP \geq 90 mm Hg).

Abbreviations: HR, hazard ratio; CI, confidence interval; ISH, isolated systolic hypertension; IDH, isolated diastolic hypertension; SDH, systolic and diastolic hypertension.

Model 1 was adjusted for age and sex.

Model 2 was adjusted for the covariates in Model 1 and was additionally adjusted for ethnicity, Townsend scores, BMI, smoking status, alcohol consumption, healthy diet score, hypertensive drug use, cholesterol-lowering medication use, history of diabetes, eGFR, and long-standing illness.

Figure 3. Associations of hypertension subtype according to the ACC/AHA guidelines with the risk of MI, IS, HS, and CVD death.



Abbreviation: HR, hazard ratio; CI, confidence interval; MI, myocardial infarction; IS, ischaemic stroke; HS, haemorrhagic stroke; CVD, cardiovascular disease; ISH, isolated systolic hypertension; IDH, isolated diastolic hypertension; SDH, systolic and diastolic hypertension.

Model 1 was adjusted for age and sex.

Model 2 was adjusted for the covariates in Model 1 and was additionally adjusted for ethnicity, Townsend scores, BMI, smoking status, alcohol consumption, healthy diet score, hypertensive drug use, cholesterol-lowering medication use, history of diabetes, eGFR, and long-standing illness.

Supplemental Table 1. Multivariate-adjusted HR (95% CIs) for BP as a continuous variable for the risk of CVD by different baseline BP cutoffs.

Model	SBP, each 5 mm Hg increase		DBP, each 5 mm Hg increase	
	DBP <80 mm Hg	DBP <90 mm Hg	SBP <130 mm Hg	SBP <140 mm Hg
CVD incidence				
Model 1	1.07 (1.05-1.09)	1.05 (1.04-1.05)	1.06 (1.03-1.09)	1.06 (1.04-1.08)
Model 2	1.05 (1.03-1.07)	1.04 (1.04-1.05)	1.03 (1.00-1.06)	1.04 (1.02-1.05)
MI incidence				
Model 1	1.06 (1.04-1.07)	1.05 (1.04-1.06)	1.08 (1.04-1.12)	1.07 (1.04-1.09)
Model 2	1.05 (1.03-1.06)	1.05 (1.04-1.06)	1.04 (1.00-1.08)	1.04 (1.01-1.06)
IS incidence				
Model 1	1.04 (1.02-1.06)	1.04 (1.03-1.05)	1.02 (0.97-1.08)	1.06 (1.02-1.09)
Model 2	1.03 (1.01-1.05)	1.04 (1.02-1.05)	1.00 (0.95-1.06)	1.04 (1.00-1.07)
HS incidence				
Model 1	1.05 (1.02-1.08)	1.04 (1.02-1.06)	1.03 (0.95-1.13)	1.07 (1.01-1.13)
Model 2	1.05 (1.01-1.08)	1.04 (1.02-1.07)	1.05 (0.96-1.15)	1.08 (1.02-1.15)
CVD death				
Model 1	1.07 (1.05-1.09)	1.04 (1.03-1.06)	1.01 (0.95-1.07)	1.02 (0.99-1.06)
Model 2	1.05 (1.03-1.07)	1.04 (1.02-1.05)	0.98 (0.93-1.04)	1.00 (0.96-1.04)

Abbreviation: HR, hazard ratio; CI, confidence interval; SBP, systolic blood pressure; DBP, diastolic blood pressure; MI, myocardial infarction; IS, ischaemic stroke; HS, haemorrhagic stroke; CVD, cardiovascular disease;

Model 1 was adjusted for age and sex.

Model 2 was adjusted for the covariates in Model 1 and was additionally adjusted for ethnicity, Townsend scores, BMI, smoking status, alcohol consumption, healthy diet score, hypertensive drug use, cholesterol-lowering medication use, history of diabetes, eGFR, and long-standing illness.

Supplemental Table 2. Sensitivity analyses of hypertension subtype by ACC/AHA definition and risk of CVD.

	Normal	High normal	ISH	IDH	SDH
Model 2 + physical activity					
Multivariable adjusted (HR [95% CI])	Ref.	1.08 (0.98-1.18)	1.34 (1.24-1.46)	1.22 (1.11-1.36)	1.50 (1.40-1.62)
Model 2 + lipid profile*					
Multivariable adjusted (HR [95% CI])	Ref.	1.07 (0.98-1.18)	1.34 (1.24-1.46)	1.19 (1.07-1.32)	1.48 (1.37-1.60)
Model 2 + physical activity and lipid profile					
Multivariable adjusted (HR [95% CI])	Ref.	1.07 (0.98-1.18)	1.34 (1.24-1.46)	1.19 (1.07-1.32)	1.48 (1.37-1.59)
Exclusion of missing variables					
Multivariable adjusted (HR [95% CI])	Ref.	1.09 (0.99-1.20)	1.35 (1.24-1.47)	1.21 (1.09-1.35)	1.51 (1.40-1.63)
Exclusion of those with incident CVD in the first 2 years of follow-up					
Multivariable adjusted (HR [95% CI])	Ref.	1.13 (1.02-1.25)	1.39 (1.27-1.52)	1.23 (1.10-1.38)	1.55 (1.43-1.69)
Exclusion of those taking antihypertensive medications					
Multivariable adjusted (HR [95% CI])	Ref.	1.10 (1.00-1.21)	1.39 (1.27-1.52)	1.28 (1.15-1.43)	1.62 (1.50-1.76)

Abbreviations: HR, hazard ratio; CI, confidence interval; PA, physical activity; CVD, cardiovascular disease; ISH, isolated systolic hypertension; IDH, isolated diastolic hypertension; SDH, systolic and diastolic hypertension.

Model 2 was adjusted for age, sex, ethnicity, Townsend scores, BMI, smoking status, alcohol consumption, healthy diet score, hypertensive drug use, cholesterol-lowering medication use, history of diabetes, eGFR, and long-standing illness.

*Lipid profile refers to the serum concentrations of low-density lipoprotein cholesterol, high-density lipoprotein cholesterol and triglyceride.

Supplemental Table 3. Associations of ISH and IDH with CVD risk by ACC/AHA definition, taking baseline BP into account.

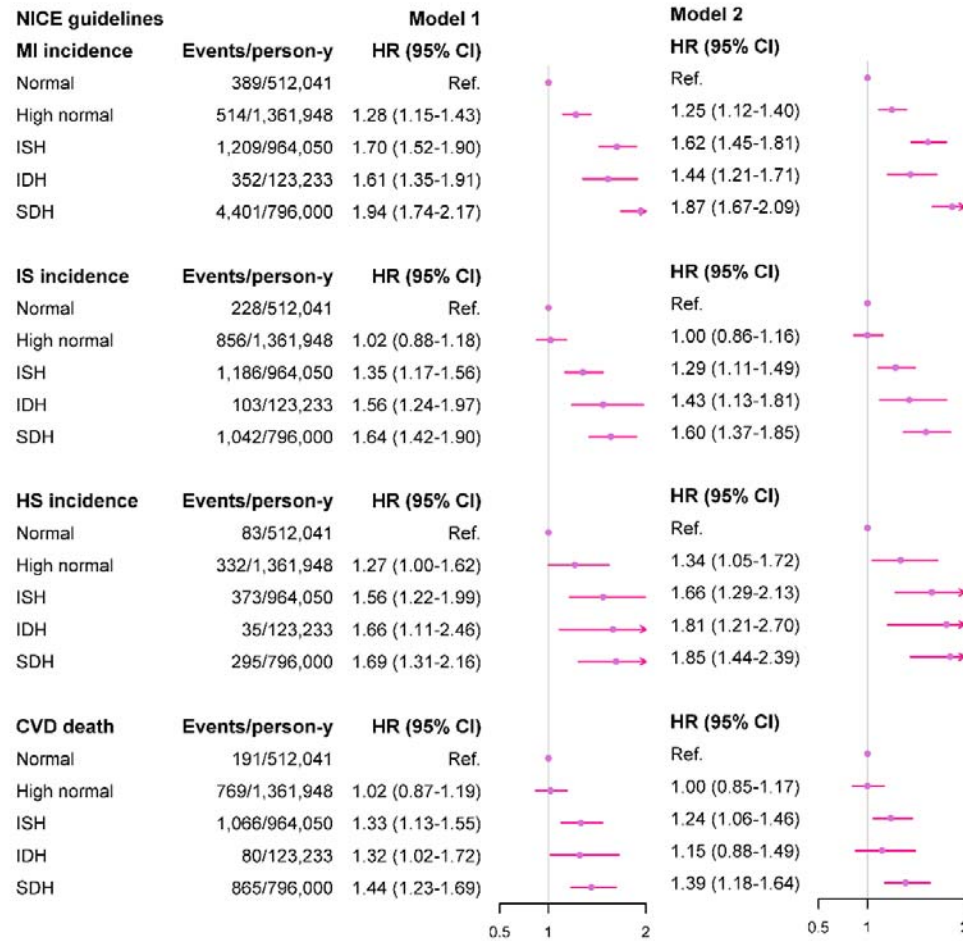
	Normal	ISH	IDH
ACC/AHA guidelines (HR [95% CI])	Ref.	1.28 (1.17-1.40)	1.34 (1.16-1.55)
NICE guidelines (HR [95% CI])	Ref.	1.41 (1.29-1.54)	1.38 (1.17-1.62)

Abbreviations: HR, hazard ratio; CI, confidence interval; ISH, isolated systolic hypertension; IDH, isolated diastolic hypertension; SDH, systolic and diastolic hypertension; BP, blood pressure.

Multifactorial adjustments were made for age, sex, ethnicity, Townsend scores, BMI, smoking status, alcohol consumption, healthy diet score, hypertensive drug use, cholesterol-lowering medication use, history of diabetes, eGFR, and long-standing illness.

For ISH, the multivariable-adjusted model was further adjusted for baseline DBP; whereas for IDH, the multivariable adjusted model was further adjusted for baseline SBP.

Supplemental Figure 1. Multivariate-adjusted HRs (95% CIs) for the risk of CVD by hypertension subtype according to the NICE definition*.



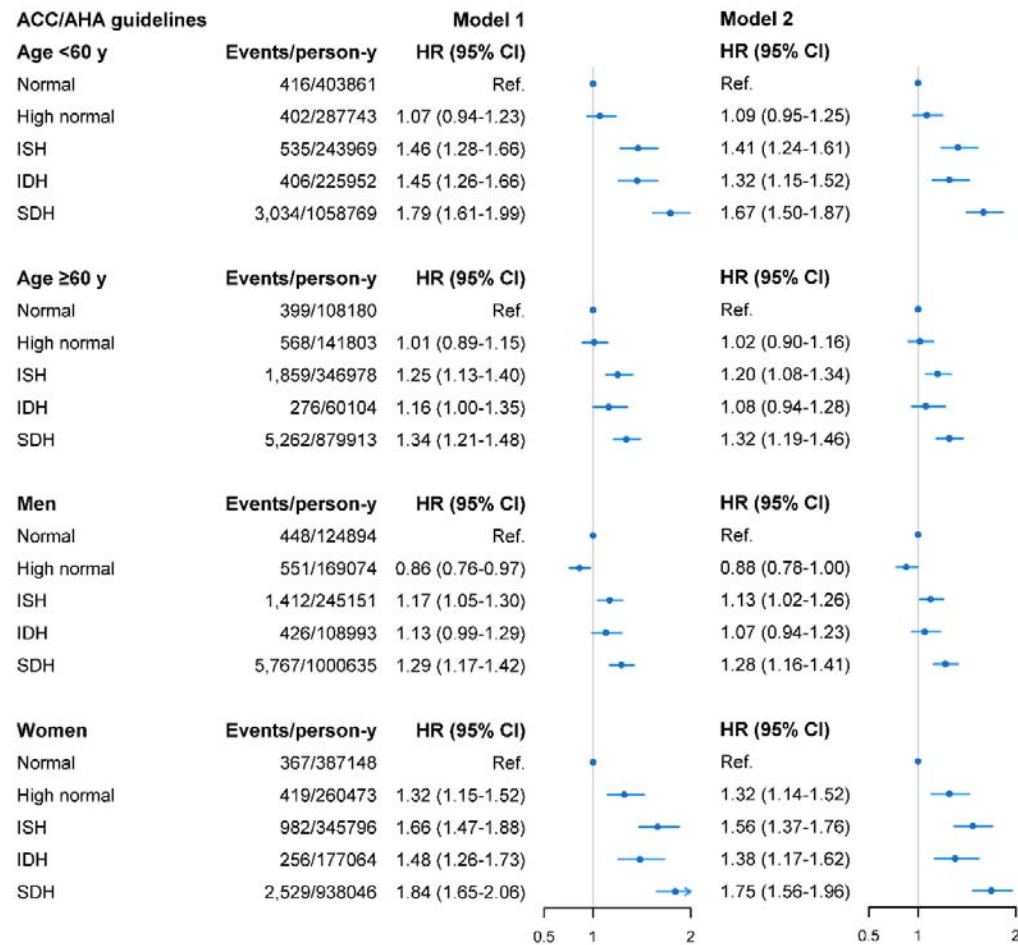
*With a BP cutoff of 140/90 mm Hg by the NICE guidelines, participants were stratified into 5 mutually exclusive BP categories: 1) normal (SBP <130 mm Hg and DBP <85 mm Hg); 2) high normal (SBP 130 to 139 mm Hg and DBP 85 to 89 mm Hg, SBP 130 to 139 mm Hg and DBP <85 mm Hg, or SBP <130 mm Hg and DBP 85 to 89 mm Hg); 3) ISH (SBP ≥140 mm Hg and DBP <90 mm Hg); 4) IDH (SBP <140 mm Hg and DBP ≥90 mm Hg); and 5) SDH (SBP ≥140 mm Hg and DBP ≥90 mm Hg).

Abbreviation: HR, hazard ratio; CI, confidence interval; MI, myocardial infarction; IS, ischaemic stroke; HS, haemorrhagic stroke; CVD, cardiovascular disease; ISH, isolated systolic hypertension; IDH, isolated diastolic hypertension; SDH, systolic and diastolic hypertension.

Model 1 was adjusted for age and sex.

Model 2 was adjusted for the covariates in Model 1 and was additionally adjusted for ethnicity, Townsend scores, BMI, smoking status, alcohol consumption, healthy diet score, hypertensive drug use, cholesterol-lowering medication use, history of diabetes, eGFR, and long-standing illness.

Supplemental Figure 2. Age and sex-specific multivariate-adjusted HRs (95% CIs) for composite CVD outcome by hypertension subtype according to the ACC/AHA definition.

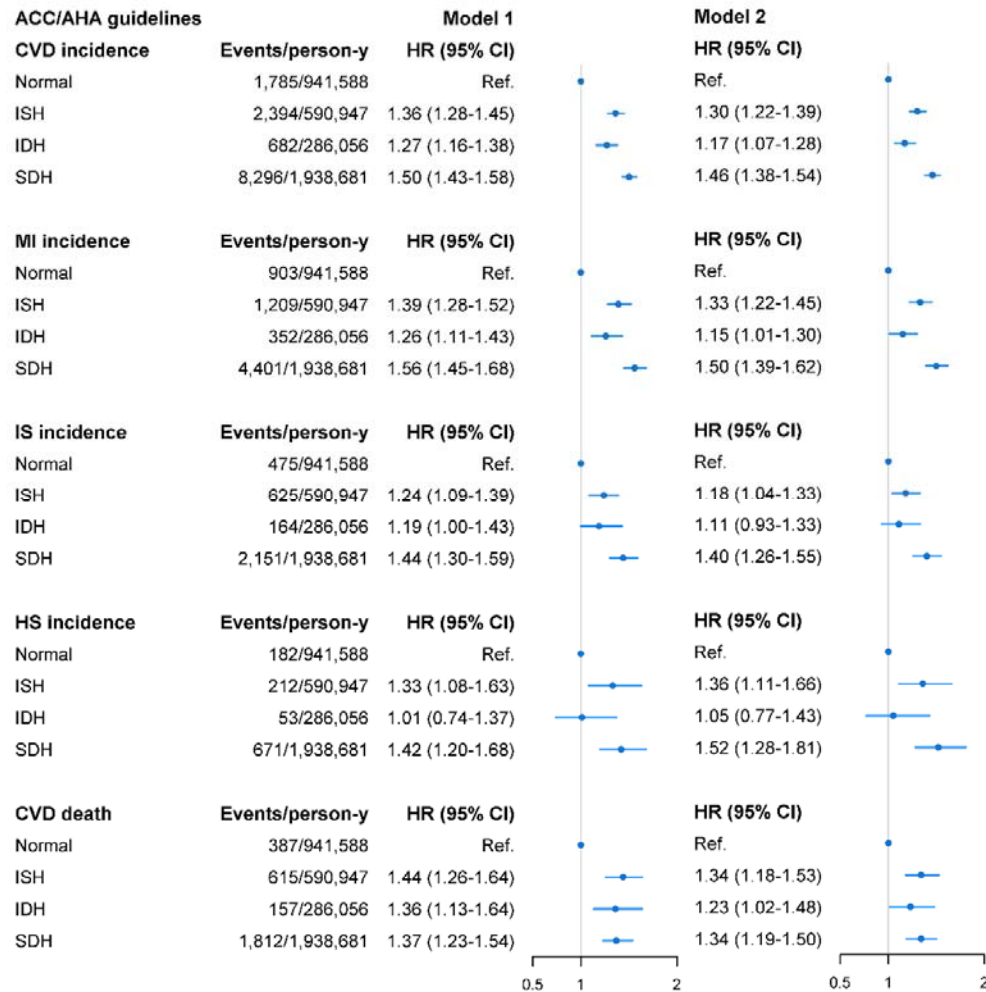


Abbreviations: HR, hazard ratio; CI, confidence interval; ISH, isolated systolic hypertension; IDH, isolated diastolic hypertension; SDH, systolic and diastolic hypertension.

Model 1 was adjusted for age and sex.

Model 2 was adjusted for the covariates in Model 1 and was additionally adjusted for ethnicity, Townsend scores, BMI, smoking status, alcohol consumption, healthy diet score, hypertensive drug use, cholesterol-lowering medication use, history of diabetes, eGFR, and long-standing illness.

Supplemental Figure 3. Multivariate-adjusted HRs (95% CIs) for the risk of CVD by hypertension subtype according to the ACC/AHA definition, after re-defining the reference group*.



*Reference group was defined as SBP/DBP <130/80 mm Hg.

Abbreviations: HR, hazard ratio; CI, confidence interval; MI, myocardial infarction; IS, ischemic stroke; HS, haemorrhagic stroke; CVD, cardiovascular disease; ISH, isolated systolic hypertension; IDH, isolated diastolic hypertension; SDH, systolic and diastolic hypertension.

Multifactorial adjustments were made for age, sex, ethnicity, Townsend scores, BMI, smoking status, alcohol consumption, healthy diet score, hypertensive drug use, cholesterol-lowering medication use, history of diabetes, eGFR, and long-standing illness.

References

1. Verdecchia P, Angeli F. Natural history of hypertension subtypes. *Circulation*. 2005;111(9):1094-1096. doi: 10.1161/01.CIR.0000158690.78503.5F
2. Whelton PK, Carey RM, Aronow WS, et al. 2017 ACC/AHA/AAPA/ABC/ACPM/AGS/APhA/ASH/ASPC/NMA/PCNA Guideline for the Prevention, Detection, Evaluation, and Management of High Blood Pressure in Adults: A Report of the American College of Cardiology/American Heart Association Task Force on Clinical Practice Guidelines. *Circulation*. 2018;138(17):e484-e594. doi: 10.1161/CIR.0000000000000596
3. Mancia G, Corrao G. Global Impact of the 2017 American College of Cardiology/American Heart Association Hypertension Guidelines: A Perspective From Italy. *Circulation*. 2018;137(9):889-890. doi: 10.1161/CIRCULATIONAHA.117.032850
4. Wander GS, Ram C. Global Impact of 2017 American Heart Association/American College of Cardiology Hypertension Guidelines: A Perspective From India. *Circulation*. 2018;137(6):549-550. doi: 10.1161/CIRCULATIONAHA.117.032877
5. Wang JG, Liu L. Global Impact of 2017 American College of Cardiology/American Heart Association Hypertension Guidelines: A Perspective From China. *Circulation*. 2018;137(6):546-548. doi: 10.1161/CIRCULATIONAHA.117.032890
6. Brunström M, Carlberg B, Lindholm LH. Perspective From Sweden on the Global Impact of the 2017 American College of Cardiology/American Heart Association Hypertension Guidelines. *Circulation*. 2018;137(9):886-888. doi: 10.1161/CIRCULATIONAHA.118.033632
7. Qi Y, Han X, Zhao D, et al. Long-Term Cardiovascular Risk Associated With Stage 1 Hypertension Defined by the 2017 ACC/AHA Hypertension Guideline. *J Am Coll Cardiol*. 2018;72(11):1201-1210. doi: 10.1016/j.jacc.2018.06.056
8. Kim D, Yang PS, Kim TH, et al. Ideal Blood Pressure in Patients With Atrial Fibrillation. *J Am Coll Cardiol*. 2018;72(11):1233-1245. doi: 10.1016/j.jacc.2018.05.076
9. Flint AC, Conell C, Ren X, et al. Effect of Systolic and Diastolic Blood Pressure on Cardiovascular Outcomes. *N Engl J Med*. 2019;381(3):243-251. doi: 10.1056/NEJMoa1803180
10. McEvoy JW, Daya N, Rahman F, et al. Association of Isolated Diastolic Hypertension as Defined by the 2017 ACC/AHA Blood Pressure Guideline With Incident Cardiovascular Outcomes. *JAMA*. 2020;323(4):329. doi: 10.1001/jama.2019.21402
11. Sudlow C, Gallacher J, Allen N, et al. UK biobank: an open access resource for identifying the causes of a wide range of complex diseases of middle and old age. *Plos Med*. 2015;12(3):e1001779. doi: 10.1371/journal.pmed.1001779
12. Palmer LJ. UK Biobank: bank on it. *Lancet*. 2007;369(9578):1980-1982. doi: 10.1016/S0140-6736(07)60924-6
13. Ma H, Li X, Sun D, et al. Association of habitual glucosamine use with risk of cardiovascular disease: prospective study in UK Biobank. *BMJ*. 2019;365:l1628. doi: 10.1136/bmj.l1628
14. Malden D, Lacey B, Emberson J, et al. Body Fat Distribution and Systolic Blood Pressure in 10,000 Adults with Whole-Body Imaging: UK Biobank and Oxford BioBank. *Obesity (Silver Spring)*. 2019;27(7):1200-1206. doi: 10.1002/oby.22509
15. Elliott P, Peakman TC. The UK Biobank sample handling and storage protocol for the collection, processing and archiving of human blood and urine. *Int J Epidemiol*. 2008;37(2):234-244. doi:

10.1093/ije/dym276

16. Inker LA, Schmid CH, Tighiouart H, et al. Estimating glomerular filtration rate from serum creatinine and cystatin C. *N Engl J Med.* 2012;367(1):20-29. doi: 10.1056/NEJMoa1114248
17. Yano Y, Stamler J, Garside DB, et al. Isolated systolic hypertension in young and middle-aged adults and 31-year risk for cardiovascular mortality: the Chicago Heart Association Detection Project in Industry study. *J Am Coll Cardiol.* 2015;65(4):327-335. doi: 10.1016/j.jacc.2014.10.060
18. Kelly TN, Gu D, Chen J, et al. Hypertension subtype and risk of cardiovascular disease in Chinese adults. *Circulation.* 2008;118(15):1558-1566. doi: 10.1161/CIRCULATIONAHA.107.723593
19. Franklin SS, Pio JR, Wong ND, et al. Predictors of new-onset diastolic and systolic hypertension: the Framingham Heart Study. *Circulation.* 2005;111(9):1121-1127. doi: 10.1161/01.CIR.0000157159.39889.EC
20. Nielsen WB, Lindenstrøm E, Vestbo J, Jensen GB. Is Diastolic Hypertension an Independent Risk Factor for Stroke in the Presence of Normal Systolic Blood Pressure in the Middle-aged and Elderly? *Am J Hypertens.* 1997;10(6):634-639. doi: [https://doi.org/10.1016/S0895-7061\(96\)00505-5](https://doi.org/10.1016/S0895-7061(96)00505-5)
21. Strandberg TE, Salomaa VV, Vanhanen HT, Pitkala K, Miettinen TA. Isolated diastolic hypertension, pulse pressure, and mean arterial pressure as predictors of mortality during a follow-up of up to 32 years. *J Hypertens.* 2002;20(3):399-404. doi: 10.1097/00004872-200203000-00014
22. Hozawa A, Ohkubo T, Nagai K, et al. Prognosis of isolated systolic and isolated diastolic hypertension as assessed by self-measurement of blood pressure at home: the Ohasama study. *Arch Intern Med.* 2000;160(21):3301-3306. doi: 10.1001/archinte.160.21.3301
23. Verdecchia P, Angeli F. Natural history of hypertension subtypes. *Circulation.* 2005;111(9):1094-1096. doi: 10.1161/01.CIR.0000158690.78503.5F
24. Smulyan H, Safar ME. Systolic blood pressure revisited. *J Am Coll Cardiol.* 1997;29(7):1407-1413. doi: 10.1016/s0735-1097(97)00081-8
25. Messerli FH, Frohlich ED, Suarez DH, et al. Borderline hypertension: relationship between age, hemodynamics and circulating catecholamines. *Circulation.* 1981;64(4):760-764. doi: 10.1161/01.cir.64.4.760
26. Julius S, Pascual AV, London R. Role of parasympathetic inhibition in the hyperkinetic type of borderline hypertension. *Circulation.* 1971;44(3):413-418. doi: 10.1161/01.cir.44.3.413
27. Kannel WB, Dawber TR, McGee DL. Perspectives on systolic hypertension. The Framingham study. *Circulation.* 1980;61(6):1179-1182. doi: 10.1161/01.cir.61.6.1179
28. Cecelja M, Jiang B, McNeill K, et al. Increased wave reflection rather than central arterial stiffness is the main determinant of raised pulse pressure in women and relates to mismatch in arterial dimensions: a twin study. *J Am Coll Cardiol.* 2009;54(8):695-703. doi: 10.1016/j.jacc.2009.04.068
29. Smulyan H, Asmar RG, Rudnicki A, London GM, Safar ME. Comparative effects of aging in men and women on the properties of the arterial tree. *J Am Coll Cardiol.* 2001;37(5):1374-1380. doi: 10.1016/s0735-1097(01)01166-4
30. Hayward CS, Kelly RP. Gender-related differences in the central arterial pressure waveform. *J Am Coll Cardiol.* 1997;30(7):1863-1871. doi: 10.1016/s0735-1097(97)00378-1
31. Shim CY, Park S, Choi D, et al. Sex differences in central hemodynamics and their relationship to left ventricular diastolic function. *J Am Coll Cardiol.* 2011;57(10):1226-1233. doi: 10.1016/j.jacc.2010.09.067
32. Millett E, Peters S, Woodward M. Sex differences in risk factors for myocardial infarction: cohort study of UK Biobank participants. *BMJ.* 2018;363:k4247. doi: 10.1136/bmj.k4247

