

Plasma lipidomics identifies a signature of NAFLD in children that couples with cardiometabolic outcomes in adults.

Jake P. Mann¹, Benjamin Jenkins², Samuel Furse², Stuart G. Snowden², Anna Alisi³, Laura G. Draijer⁴,
EU-PNAFLD investigators[^], Kylie Karnebeek⁵, Deirdre A. Kelly⁶, Bart G. Koot⁴, Antonella Mosca⁷,
Camilla Salvestrini⁸, Indra van Mourik⁶, Anita Vreugdenhil⁵, Matthias Zilbauer^{8,9}, Albert Koulman²

Affiliations

1. Institute of Metabolic Science, University of Cambridge, Cambridge, UK.
2. Core Metabolomics and Lipidomics Laboratory, Wellcome Trust-MRC Institute of Metabolic Science, University of Cambridge, L4 Addenbrooke's Treatment Centre, Keith Day Road, Cambridge, CB2 0QQ, UK.
3. Research Unit of Molecular Genetics of Complex Phenotypes, Bambino Gesù Children's Hospital, IRCCS, Rome, Italy.
4. Department of Paediatric Gastroenterology and Nutrition, Amsterdam University Medical Centers, Emma Children's Hospital, Amsterdam, The Netherlands.
5. Centre for Overweight Adolescent and Children's Healthcare (COACH), Department of pediatrics, School of Nutrition and Translational Research in Metabolism (NUTRIM), Maastricht University Medical Centre, The Netherlands.
6. Liver Unit, Birmingham Women's & Children's Hospital, and University of Birmingham, Birmingham, UK.

7. Hepatology Gastroenterology and Nutrition, Bambino Gesù Children's Hospital, Rome, Italy.

8. Department of Paediatric Gastroenterology and Nutrition, Addenbrooke's Hospital, Cambridge, UK.

9. Department of Paediatrics, University of Cambridge, UK.

^A list of investigators is included in the Acknowledgements section

Correspondence:

Dr. Jake P Mann

Metabolic Research Laboratories

Level 4, Institute of Metabolic Science

Addenbrooke's Hospital

Cambridge, CB2 0QQ

jm2032@cam.ac.uk

Tel: +44 1223 336792

Fax: +44 1223 330598

Authors' declaration of personal interests:

The authors have no conflicts of interest to declare.

Funding sources:

JPM is supported by a Wellcome Trust fellowship (216329/Z/19/Z), a European Society for Paediatric

Research (ESPR) Young Investigator Award, and a Children's Liver Disease Foundation Grant. EU-

PNAFLD Registry is supported by a European Association for Study of the Liver (EASL) Registry Grant.

MZ is supported by a New Investigator Research Grant from the MRC (MR/T001917/1). BK is

supported by grants from Van den Broek Lohman Foundation, Virtutis Opus Foundation and For

49 Wisdom Foundation. SF, SGS & AK are supported by the BBSRC (BB/M027252/1 & BB/P028195/1),

50 BJJ & AK are supported by the National Institute for Health Research (NIHR146281).

51

52 **Abbreviations:**

53 GWAS, genome-wide association study; LPC, lyso-phosphatidylcholine; NAFLD, non-alcoholic fatty

54 liver disease; NASH, non-alcoholic steatohepatitis; NAS, NAFLD Activity Score; PC,

55 phosphatidylcholine; PheWAS, phenome-wide association study; TG, triglyceride.

56

57

58

59

60

Abstract

Non-alcoholic fatty liver disease (NAFLD) is an increasingly common condition in children and adults characterized by insulin resistance and altered lipid metabolism. Affected patients are at increased risk of cardiovascular disease (CVD) and children with NAFLD are likely to be at risk of premature cardiac events. Evaluation of the plasma lipid profile of children with NAFLD offers the opportunity to investigate these perturbations and understand how closely they mimic the changes seen in adults with cardiometabolic disease. We hypothesized that change in the concentration of lipid species in pediatric NAFLD would mimic the alterations known to be associated with CVD in adults (and be largely reflective of insulin resistance). Here, we performed untargeted liquid chromatography mass spectrometry (LC-MS) plasma lipidomics on 287 children: 19 lean controls, 146 from an obese cohort, and 122 NAFLD cases who had undergone liver biopsy. Associations between lipid species and liver histology were assessed using regression adjusted for age and sex. Results were then replicated using data from 9,500 adults with metabolic phenotyping. Phosphatidylcholine (PC) and triglyceride (TG) desaturation and chain length were inversely associated with histological severity of paediatric NAFLD. Nine lipids species (lyso-PC, PC, and TG classes) were also associated with hepatic steatosis and insulin resistance in an independent cohort of adults. Five of the 9 lipids replicated in the adults cohort (including PC(36:4)) have been directly linked to death and cardiometabolic disease in adults, as well as indirectly via genetic variants that influence the concentration of these species. Together, these findings suggest that lipid metabolism is altered in paediatric NAFLD in a similar way as in cardiometabolic disease in adults and it is therefore critical to alleviate insulin resistance in these children to mitigate their long-term morbidity.

84 Introduction

85 Non-alcoholic fatty liver disease (NAFLD) is a common, chronic disorder that is closely linked to obesity
86 and insulin resistance[1]. Most of the morbidity and mortality in patients with NAFLD occurs due to
87 complications of cardiovascular disease though a small, but significant, proportion develop cirrhosis[2].
88 Individuals with higher stages of liver fibrosis[3] or more active inflammation (non-alcoholic
89 steatohepatitis (NASH)[4] are more likely to progress to end-stage liver disease and may be at higher risk
90 of cardiovascular disease CVD[5].

91
92 The current increase in childhood obesity is resulting to more NAFLD in children, which is also
93 associated with the metabolic syndrome[6] and, whilst the long-term outcomes have not yet been formally
94 established with the same degree of confidence as in adults[7,8], they are believed to be similar, including
95 cardiovascular disease (CVD). However, paediatric NAFLD has several unique features, in particular
96 peri-portal inflammation is a more prominent feature, particularly in younger children, boys, and in those
97 of Hispanic ethnicity[9,10]. Therefore, it is not entirely clear to what extent paediatric and adult NAFLD
98 differ.

99
100 Lipidomics is a technique that aims to comprehensively measure the concentration (or abundance) of lipid
101 species that has been used by several groups to gain insight into altered lipid metabolism in NAFLD.
102 Liver samples[11–13], venous-[14,15] and portal- blood[16] have been studied in humans, all showing
103 specific lipid species to associate with histological severity of NAFLD in adults. This work has identified
104 perturbation of pathways leading to an increased hepatic *de novo* lipogenesis, desaturase activity, and
105 phospholipid metabolism. To date, lipidomic studies in children have focused on species that differentiate
106 NAFLD patients from healthy or obese controls [17,18]. However, none of these studies have included
107 histologically characterized cases therefore it is not clear whether the observed changes are purely
108 reflective of underlying insulin resistance or specific to NAFLD. and its histological severity.

109

110 In this study we analyzed plasma lipidomics to investigate lipid metabolism in children with NAFLD.

111 Specifically, we aimed to: (i) identify lipid species that were associated with the histological severity of

112 NAFLD; (ii) determine if similar changes were observed in separate cohort of obese children; (iii)

113 identify overlap in a cohort of adults with NAFLD; (iv) and then to understand the potential long-term

114 clinical significance of these lipids on cardiometabolic disease outcomes using data from adults. We

115 hypothesized that the lipid signature of paediatric NAFLD would be largely reflective of insulin

116 resistance and therefore would be associated with cardiometabolic disease in adults.

117

Methods

Participants

An overview of the study design is shown in Figure 1. Three groups of participants were included in this cross-sectional study: lean controls, a cohort of children who were overweight or obese ('obesity cohort'), and cases with suspected advanced NAFLD who had undergone liver biopsy ('biopsied NAFLD cases'). In addition, we used publicly available data from adults cohorts [19–21]. All participants (or their parents) gave written informed consent and were recruited between 2014-2019, for the below ethically-approved studies, which were confirmed with the Declaration of Helsinki principles.

Lean controls were recruited as part of the Translational Research in Intestinal Physiology and Pathology (TRIPP) Study at Cambridge University (UK), which was approved by East of England - Cambridge South Research Ethics Committee (REC 17/EE/0265). These children had been referred due to diarrhea, vomiting, or abdominal pain and underwent endoscopy to rule out gastrointestinal disease. They were found to have no evidence of pathology after thorough assessment and had complete resolution of any symptoms. There is a low likelihood of NAFLD in this control group who were lean (BMI z-score <1.04) and had normal liver biochemistry.

The obesity cohort was recruited from paediatric obesity clinics at Maastricht Children's Hospital (under ethical approval METC 13-4-130) and Amsterdam University Medical Centers (under ethical approval MEC 2017_306 and MEC 07/141). Children were referred to these clinics from their primary care physicians due to being overweight or obese and were then subsequently investigated for co-morbidities (and secondary causes of obesity). As there was no clinical indication for liver biopsy, it was not possible to conclusively identify or exclude NAFLD in all children from the obesity cohort. However, a subset underwent magnetic resonance spectroscopy (MRS) which provides high sensitivity for identifying steatosis.

Biopsied NAFLD cases were recruited as part of the European Paediatric NAFLD Registry (EU-PNAFLD, Clintrials.gov NCT:04190849)[22], which was approved by the East Midlands - Nottingham 2 Research Ethics Committee (17/EM/0084). These children had been referred to specialist centres for paediatric hepatology (Birmingham Children's Hospital (UK) and Bambino Gesù Children's Hospital (Rome, Italy)) due to suspected advanced NAFLD and underwent liver biopsy for diagnosis of NAFLD and staging of disease.

As an exploratory analysis, we utilized data from the maximum number of available participants therefore no formal sample size calculation was performed.

Inclusion and exclusion criteria

All participants were 5-18 years old at the time of inclusion.

Lean controls: BMI z-score <1.04, normal serum liver biochemistry, and no clinical evidence of liver disease. The obesity cohort all had a BMI z-score >1.64 (except for one participant who was overweight with BMI z-score 1.2) and no evidence of secondary causes of obesity (e.g. hypothyroidism). Biopsied NAFLD cases: NAFLD diagnosed by liver histology, plus exclusion of secondary causes using blood tests: normal range ceruloplasmin, ferritin, alpha-1-antitrypsin; normal immunoglobulins, negative antinuclear antibody, and negative anti-smooth muscle antibody; and negative screening for chronic viral hepatitis.

Clinical and laboratory investigations

Lean controls had height and weight measured and fasting blood obtained but no further samples or investigations were performed for the purpose of this study.

The obesity cohort and biopsied NAFLD cases both underwent baseline characterization with clinical assessment and anthropometric measurements including waist/hip circumferences and blood pressure. Fasting blood was obtained and plasma was frozen at -80 degree Celsius for use in all analyses. The

homeostatic model assessment of insulin resistance (HOMA-IR) was derived using fasting insulin ($\mu\text{U/L}$) x fasting glucose (nmol/L) / 22.5. A subset of the obesity cohort ($n=95$) underwent magnetic resonance spectroscopy (MRS) for quantification of hepatic fat and a separate subset ($n=42$) had transient elastography (TE) performed to non-invasively test for signs of NAFLD. Steatosis was defined as MRS $>1.8\%$, which corresponds with $>5\%$ fat containing hepatocytes on liver histology[23].

Liver biopsies

All NAFLD cases underwent liver biopsy whereas liver biopsy was not performed in control participants or the obesity cohort. Liver biopsy was performed in accordance with ESPGHAN guidelines[24]. Biopsies were obtained percutaneously and considered adequate if there was minimal fragmentation and at least 20 mm long. Liver biopsy was scored according to NASH CRN criteria[10,25], including assessment of portal inflammation as none (0), mild (1), or more than mild (2), and calculation of the NAFLD Activity Score (NAS). Samples from liver biopsy were used for histological assessment only; no tissue was available for lipidomic (or transcriptomic) analysis.

Plasma lipidomics analysis

For lipid profiling, the plasma samples were analyzed by liquid chromatography with mass spectrometry detection (LC–MS) as described previously[26].

All solvents and additives were of HPLC grade or higher and purchased from Sigma Aldrich (Haverhill, Suffolk, UK) unless otherwise stated.

The protein precipitation liquid extraction protocol has been described previously[26]. Briefly, 50 μL of plasma was transferred into a 2 mL screw cap Eppendorf plastic tube (Eppendorf, Stevenage, UK). Immediately, 650 μL of chloroform was added to each sample, followed by thorough mixing. Then, 100 μL of the LIPID-IS (5 μM in methanol), 100 μL of the CARNITINE-IS (5 μM in methanol) and 150 μL of methanol was added to each sample, followed by thorough mixing. Then, 400 μL of acetone was added

to each sample. The samples were vortexed and centrifuged for 10 minutes at ~20,000 g to pellet any insoluble material. The supernatant was pipetted into separate 2 mL screw cap amber-glass auto-sampler vials (Agilent Technologies, Cheadle, United Kingdom). The organic extracts were dried down to dryness using a Concentrator Plus system (Eppendorf, Stevenage, UK) run for 60 minutes at 60 degree Celsius. The samples were reconstituted in 100 µL of 2: 1: 1 (propan-2-ol, acetonitrile and water, respectively) then thoroughly vortex. The reconstituted sample was transferred into a 250 µL low-volume vial insert inside a 2 mL amber glass auto-sample vial ready for liquid chromatography with mass spectrometry detection (LC-MS) analysis.

Full chromatographic separation of intact lipids was achieved using Shimadzu HPLC System (Shimadzu UK Limited, Milton Keynes, United Kingdom) with the injection of 10 µL onto a Waters Acquity UPLC® CSH C18 column (Waters, Hertfordshire, United Kingdom); 1.7 µm, I.D. 2.1 mm X 50 mm, maintained at 55 degrees Celsius. Mobile phase A was 6:4, acetonitrile and water with 10 mM ammonium formate. Mobile phase B was 9:1, propan-2-ol and acetonitrile with 10 mM ammonium formate. The flow was maintained at 500 µL per minute through the following gradient: 0.00 minutes_40% mobile phase B; 0.40 minutes_43% mobile phase B; 0.45 minutes_50% mobile phase B; 2.40 minutes_54% mobile phase B; 2.45 minutes_70% mobile phase B; 7.00 minutes_99% mobile phase B; 8.00 minutes_99% mobile phase B; 8.3 minutes_40% mobile phase B; 10 minutes_40% mobile phase B. The sample injection needle was washed using 9:1, 2-propan-2-ol and acetonitrile. The mass spectrometer used was the Thermo Scientific Exactive Orbitrap with a heated electrospray ionization source (Thermo Fisher Scientific, Hemel Hempstead, UK). The mass spectrometer was calibrated immediately before sample analysis using positive and negative ionization calibration solution (recommended by Thermo Scientific). Additionally, the mass spectrometer scan rate was set at 4 Hz, giving a resolution of 25,000 (at 200 m/z) with a full-scan range of m/z 100 to 1,800 with continuous switching between positive and negative mode.

Data processing—The instrument responses of the analytes were normalized to the relevant internal standard response (producing area ratios), these area ratios corrected the intensity for any extraction and

instrument variations. The area ratios were then blank corrected where intensities less than three times the blank samples were set to a ‘Not Found’ result (i.e., zero concentration). The accepted area ratios were then multiplied by the concentration of the internal standard to give the analyte semi-quantitative concentrations.

Statistical analyses

Participants were initially separated into lean controls, obesity cohort, and biopsied NAFLD cases. Clinical and biochemical characteristics of obese controls and biopsied NAFLD cases were compared using two-way unpaired T-tests for continuous data and chi-squared test for categorical data. p-values were converted to q-values by adjusting for multiple testing using the Benjamini-Hochberg method. Due to the differences in clinical characteristics and selection of participants, further analyses were performed within either the obesity cohort or biopsied NAFLD cases separately. In the NAFLD cohort, the association between standard clinical or biochemical measurements and liver histology was tested using regression analysis. Skewed continuous independent variables (e.g. age, HOMA-IR), were logarithmically transformed and standardized (to mean = 0, standard deviation (SD) = 1) before being used in linear models. Univariable linear regression was performed for NAS, fibrosis, and portal inflammation score (dependent variables) and each independent variable. Following initial processing as described above, only lipid species detected in >70% of participants (including lean controls) were included. For included species, minimum value imputation was used for missing values. ‘Total’ values for each lipid class (e.g. ‘total lysophosphatidylcholine (LPC)’) were calculated as the sum of all species within a class for each individual. Absolute concentrations of lipids were logarithmically transformed and standardized (to mean = 0, SD = 1) to account for skewed distributions and allow linear regression analyses. In the obesity cohort, linear regression was performed between lipid species and serum alanine aminotransferase (ALT), HOMA-IR, hepatic fat fraction (HFF) on MRS, and liver stiffness (kPa)

measured by transient elastography. In the biopsied NAFLD cases, linear regression was performed between lipid species and NAS, steatosis grade, portal inflammation score, fibrosis stage, and HOMA-IR. All linear regressions were adjusted for age and sex. Due to high correlation between lipid species, the critical p-value for significance was defined by $0.05/\sqrt{n}$, where n is the number of included lipids: n=229 therefore $p < 3.3 \times 10^{-3}$ was determined as statistically significant. We then performed meta-regression to examine for trends in lipid saturation or carbon chain length within classes of lipids. Beta regression coefficients from the above models were regressed against double bonds or carbons within lipid classes. p-values were converted to q-values by adjusting for multiple testing using the Benjamini-Hochberg method.

Comparison with adult NAFLD

We explored whether significant, directionally consistent associations were observed between lipids identified in this study and those in a previously published cohort study of adults[19]. This study used both targeted and untargeted metabolomics in a population-based study of middle-aged adults who had undergone abdominal ultrasound for identification of hepatic steatosis, in addition to comprehensive metabolic analysis. Further details of the Fenland Cohort are described elsewhere[27]. We searched for all directionally consistent and significant ($q < 0.1$) associations for the 72 lipids that reached statistical significance from our analyses in pediatric biopsied NAFLD cases.

Annotation with disease outcomes and GWAS loci

The 72 significant lipids from this study were also annotated with results from a recent metabolite-wide association study of non-communicable diseases in adults[20]. This study used untargeted metabolomics in the EPIC-Norfolk cohort of adults with long-term prospective follow-up for clinical outcomes, as a component of the EPIC study[28]. We searched for all directionally consistent and significant ($q < 0.1$) associations from Pietzner *et al.* for the 72 lipids identified from our analyses in biopsied NAFLD cases.

Next, we explored which genetic variants are known to influence circulating levels of the lipids identified in the current analysis. We used data from a lipidomics genome-wide association study (GWAS), which had also collated relevant results from previous metabolomics GWAS[21]. We searched for genome-wide significant variants (as defined by the original studies) for the 72 top lipids identified in our analysis. The nearest gene annotation was extracted from the original study and no functional annotation of variants was performed.

Finally, for variants at GWAS significance from the above data, we performed a phenome-wide association study for cardio-metabolic traits. We used PheWAS data from Tabassum *et al.* and searched PhenoscannerV2[29] to annotate variants.

All analyses were performed using R 4.0.2[30] and code used is available from:

<https://doi.org/10.5281/zenodo.5507129>.

Results

287 children were recruited to the study: 19 lean controls, 146 obese or overweight children, and 122 biopsied NAFLD cases (Table 1). We studied a cohort of obese children and a group of specifically selected children with NAFLD who had undergone biopsy in a tertiary liver center. These three groups were brought together to understand differences in circulating lipid profile in severe NAFLD and compared to other children with obesity more typical of those seen in primary care.

The obese cohort reflected referral from primary care physicians and therefore included a full spectrum of individuals from those with no evidence of systemic metabolic dysfunction, through to those with marked insulin resistance (Figure S1B). Of the subset from the obese cohort who undergone liver MRS, 47% (45/90) had steatosis (i.e. >1.8% on MRS, Figure S1F).

In the biopsied NAFLD cases, a range of histological severity was observed (Table S1). 55/114 (48%) had NAFLD Activity Score ≥ 5 and 86/115 (75%) had evidence of portal inflammation. 100/122 (82%) of children had fibrosis and, though 5 children had stage 3 fibrosis, none were cirrhotic.

Consistent with previous reports, typical liver-related biochemistry (i.e. ALT, AST) were poor predictors of histological severity of NAFLD and standard biochemical serum lipids (total triglycerides and total cholesterol) were also not associated NAS or portal inflammation. Only age (Figure 2A) and severity of insulin resistance (Figure 2C, as approximated using HOMA-IR) were associated with histological severity of NAFLD, for example HOMA-IR and NAS $\beta = 1.2 \pm .3$, $q = 3.1 \times 10^{-3}$, $\text{adj.}r^2 = .12$ (Table S2).

Therefore, we performed plasma lipidomics to investigate whether individual lipid species (or trends in lipid saturation / chain length) were associated with the severity of NAFLD. Following normalization, all cohorts overlapped on principal component analysis and there was no clear separation of obese vs NAFLD children by hierarchical clustering (Figure S3A).

Using linear regression, we tested the association between various metabolic and hepatic traits with each lipid species within either obese cohort or biopsied NAFLD cases (Table S3 & Figure S3C). Similar results were observed for HOMA-IR, NAS, and steatosis grade in the biopsied NAFLD cases, whilst HOMA-IR clustered with ALT and HFF% in the obesity cases. These groups of traits also demonstrated significant correlation with HOMA-IR in both groups (Figure S3E & F).

We observed consistent trends on meta-regression for multiple lipid classes across both cohorts (Table S4, Figure S3D), for example, serum ALT and hepatic fat fraction (in obese cohort), and NAS (in NAFLD cohort) were negatively associated with TG desaturation and chain length (Figure 3).

Though trends on meta-regression were consistent in the both obesity cohort and biopsied NAFLD cases, the associations of individual lipids were affected by the characteristics of the different cohorts. For example, medium-length, mono-saturated TG (e.g. TG(46:1) and TG(52:1)) were positively associated with serum ALT (Figure 3J) and hepatic fat fraction (Figure 3K) in the obesity cohort. Whilst very-long chain, polyunsaturated TG (e.g. TG(58:9), Figure 3L) were negatively associated with NAS in the biopsied NAFLD cases.

Consistent results across biopsied NAFLD cases and the obesity cohort were also observed for phosphatidylcholines (PC). Total PC was lower in the obesity cohort than lean controls and lowest in biopsied NAFLD cases (Figure 4A). Serum ALT and hepatic fat fraction (in obese cohort), and NAS (in NAFLD cohort) were negatively associated with PC desaturation and chain length (Figure 4). Again, the associations of individual lipids were affected by the characteristics of the different cohorts. For example, medium-length, mono-unsaturated PC (e.g. PC(36:1)) were positively associated with serum ALT (Figure 4J) and hepatic fat fraction (Figure 4K) in the obesity cohort. Whereas, long chain, polyunsaturated PC (e.g. PC(38:5), Figure 4L) was negatively associated with NAS in the biopsied NAFLD cases.

We also observed a positive association between levels of lysophosphatidylcholines (LPC) and severity of NAFLD. Total LPC was higher in the obese cohort than lean controls and highest in the biopsied NAFLD cases (Figure 5A). Saturated LPC (e.g. LPC(16:0) and LPC(18:0), Figure 5C) were positively associated with NAFLD activity score.

Several other lipid classes demonstrated significant differences between groups, including phosphatidylglycerols (PG) and total gangliosides, which were lower in the obesity cohort and lowest in biopsied NAFLD cases (Figure 5D). Similar to the results observed for saturation and chain length for PC, we found a negative association for phosphatidylinositols (PI) with NAS (Figure 5F & 4I). We also noted that there were non-linear associations between some lipids species with NAS, for example PG(40:4) (Figure 5G-H).

342
343 In total, we identified 72 individual lipids associated with activity (portal inflammation or NAS) or
344 fibrosis stage of pediatric NAFLD (Table S5). We next assessed whether these lipids were associated with
345 hepatic steatosis (and metabolic traits) in a cohort of adults[19]. This identified 9 lipids with significant,
346 consistent effects in this independent study (Table 2). Many of these lipids perturbations were also
347 associated with markers of the metabolic syndrome (e.g. higher BMI, body fat, or HOMA-IR) in this
348 adult cohort (Table S6).

349
350 In order to understand the clinical significance of these lipids we used data from a metabolite-wide
351 association study of non-communicable diseases in adults[20]. We found significant, directionally
352 consistent associations between lipid levels and cardiometabolic disease (Table S6), which are the two top
353 causes of mortality in adults with NAFLD[2]. For example, levels of PC(36:4) were negatively associated
354 with NAS in children (beta -.23, p=.0001), hepatic steatosis in adult (beta -.12, q=.009), cardiac failure
355 (beta -.06, q=.04), and death (beta -.05, q=.0005).

356
357 Next, to understand which genes may influence the perturbations we have observed, we identified
358 published GWAS-significant loci[21] associated with these lipids. We found variants in or near 12 genes
359 at GWAS-significance with these lipids, with the most variants in or near FADS1-2-3 (Table S7). For
360 example, levels of PC(36:4) were associated with rs174564A>G near FADS1-2-3 (beta -.62, p=8.1x10⁻⁷²).
361

362
363 Finally, to provide further clinical context, we identified cardiometabolic traits associated with these
364 variants (Table S8). Variants in or near *FADS1-2-3*, *LIPC*, *MAF*, and *MFSD2A* were associated with
365 (death from) cardiometabolic disease, higher fasting glucose, and body fat (Table 2). For example, lower
366 plasma PC(36:4) was associated with: higher NAS in children; hepatic steatosis in adults (from Mann *et*
367 *al.*); all-cause mortality, diabetes, and cardiac failure in adults (from Pietzner *et al.*); and, multiple

variants in *FADS1-2-3*, which are also independently linked to death from cardiovascular disease and insulin resistance (Table 2).

Discussion

There is a well-established association between paediatric NAFLD, insulin resistance, and obesity in childhood but the long-term metabolic outcomes of this condition have not yet been fully described. Moreover, due to differences in phenotype, it has been unclear whether children share the same perturbations of lipid metabolism as adults with NAFLD. Therefore, we examined the serum lipid profile of obese children and those with NAFLD to improve our understanding of their lipid metabolism, then compared findings with the results of studies in adults. We found that several lipid species associated with insulin resistance and NAFLD severity in children were also linked to hepatic steatosis and cardiometabolic disease outcomes in adults.

Our analysis identified perturbation of multiple lipid groups, including PC and LPC. The majority of other lipidomic studies in NAFLD have also identified substantial associations between PC species and NASH. Whilst much of this work to date has been in adults[12,13,31,32], the similarities between findings suggest similar alterations in lipid metabolism between adult and paediatric NAFLD.

Phosphatidylcholines are membrane-forming lipids and therefore in circulation their abundance is influenced by the concentration of lipoprotein particles, which outer shell consists mainly of PCs. Hartley *et al.* observed lower concentrations of large- and medium-sized HDL in children with NAFLD, which could account for lower PC[18]. We also found higher levels of several saturated LPC to associated with NAFLD severity, similar to the findings by Puri *et al.* (in the livers of adults with NASH)[11]. In addition, LPC(18:1) was one of the top species identified in a separate study that differentiated obese

controls from children with NAFLD[17]. The LPC identified in the present study (LPC(16:0, 18:0)) are consistent with the activity of phospholipase A₂ (PLA₂) on PCs[33], therefore increased PLA₂ activity might account for these observations. There are several potential sources of increased PLA₂ activity, including lipoprotein-associated PLA₂ (Lp-PLA₂) and secreted forms of PLA₂ [34]. PLA₂ is of particular interest in NAFLD (and cardio-metabolic disease) as its activity is thought to correlate with pro-inflammatory mediators, and presence of oxidized-LDL[35,36]. Whether (paediatric) NAFLD is an independent risk factor for atherosclerosis is a complex question[37], however cardiovascular disease is the top cause of mortality in NAFLD[2]. We found some lipids that are not routinely measured in plasma or serum (like gangliosides and phosphoglycerols (PGs)). Work on cells and tissue samples suggests that these are necessary for normal hepatocyte structure[38] and changes in the circulation reflect what is happening at a tissue level[32]. We found that the other lipids are consistently associated with cardiovascular disease across multiple cohorts and via genetic variants influencing these lipids, though the direction of causality remains unclear.

There is a strong body of work implicating hepatic *de novo* lipogenesis (DNL) is upregulated in NAFLD[39] and is both a cause and a consequence of insulin resistance[40,41]. We observed a strong correlation between liver fat and HOMA-IR in both groups. Lipidomic research has suggested that specific lipids can serve as indirect evidence for changes in DNL[42]. Hepatic DNL is classically associated with a higher abundance of short-chain, saturated TG and lower, long-chain, unsaturated TG[43], which correlates closely with the effects of (hepatic) insulin resistance[44]. This had been observed in a pilot study on obese teenagers[45] and we replicated these findings across both our obesity cohort and paediatric biopsied NAFLD cases. Overall, we consider these results to be reflective of hepatic insulin resistance but an alternative methodology, for instance using isotopically labeled substrates, would be needed to formally investigate DNL in paediatric NASH.

A wide range of associations have been identified in previous metabolite (or lipid) profiling studies in children with NAFLD. Several have found higher levels of (branched-chain) amino acids[17,18,46–50]. There is strong evidence that levels of circulating amino acids, particularly branched chain amino acids, are highly correlated to (and even causal of) insulin resistance[51,52]. Other studies have focused on gastro-intestinal tract-derived metabolites[53], which also appear to show utility in differentiating controls from NAFLD, though are less effective in separating NAFL and NASH[54]. We did not attempt to use our data to derive a prediction algorithm due to the lack of a second, independent cohort of children biopsied for NAFLD.

These findings underscore the importance of interventions that reverse insulin resistance and dyslipidaemia in this group of children. Long-term exposure of their vasculature to this lipid profile may lead to premature cardiovascular disease. Therefore, clinical measures (i.e. weight loss) in children with NAFLD that normalize their serum lipid profile are likely to be of benefit if sustained long-term.

The main strength of this study was the inclusion of participants from a spectrum of severity of paediatric metabolic syndrome. This facilitated demonstration of trends in two separate groups of children with insulin resistance. We also were able to use histological severity of NAFLD as our main outcome, which is the gold standard of assessment and comparatively few liver biopsies are performed for fatty liver in children. Lastly, use of multiple publicly available datasets provided supporting clinical context for top lipids and comparison with results from adults, this shows that the international lipidomics community is providing a strong evidence base for new studies to build on.

The principal limitation of this work is the lack of a second, biopsied cohort of children with NAFLD for validation of results. In addition, liver biopsy samples were not available for lipidomics, which would have improved our understanding of lipid metabolism at the level of the hepatocyte. However, studies that have included paired liver and plasma samples have found considerable overlap between significantly

associated species[13]. We also identified several changes in the plasma consistent with previous reports from liver samples in adults[11]. Given the strong correlation between steatosis grade and NAS, and that comparatively few children in this cohort had severe fibrosis, these results are most informative of mild-moderate NAFLD driven by liver fat content. It should also be noted that our participants were primarily of non-Finnish European descent and therefore it is unclear to what extent these findings are generalisable to other ethnicities. Whilst we have illustrated several lipids of interest associated with the severity of paediatric NAFLD, further work, both practical and conceptual, would be required to validate these findings and progress this technique towards clinical utility. Lastly, as a cross-sectional study, we are unable to determine causality or define specific mechanisms for alterations of lipids.

Conclusion

Severity of paediatric NAFLD and insulin resistance are inversely associated with long-chain, polyunsaturated PC and TG, and positively associated with saturated LPC. These lipids are also linked to hepatic steatosis, insulin resistance, and cardiometabolic disease outcomes in adults. Pediatric NAFLD shows similar perturbation of lipid metabolism to the metabolic syndrome in adults, therefore reversal of insulin resistance in these patients is needed to reduce long-term complications.

Data availability

All data and results from analyses are contained within the manuscript and supplement. Code used in analyses is available from <https://doi.org/10.5281/zenodo.4656980>.

Acknowledgements

The authors are grateful to the young people and their families for taking part in the EU-PNAFLD Registry. The other EU-PNAFLD investigators are: Piotr Socha, Wojciech Jańczyk, Ulrich Baumann, Donatella Comparcola, Sanjay Rajwal, Florence Lacaille, Myriam Dabbas, Quentin M. Anstee and the late Valerio Nobili.

References

Table legends

Table 1. Baseline characteristics of participants included in the study. Lean children (n=19) were those undergoing endoscopy who had no evidence of gastrointestinal pathology. Obesity cohort (n=146) comprised children who were overweight or obese referred and for clinical assessment. The biopsied NAFLD cases (n=122) were children with suspected severe paediatric NAFLD who underwent liver biopsy. q-values represent false-discovery rate correct p-values between obesity and NAFLD cohorts, using unpaired t-tests for continuous traits and chi-squared for sex. Data represents mean (standard deviation) for continuous traits and number (%) for categorical traits.

Table 2. Summary table of top lipids associated with histological severity of NAFLD with children.

Lipids were included if: significantly associated with NAFLD Activity Score in children on linear regression adjusted for age and sex, and showed a directionally consistent association with hepatic steatosis on ultrasound in an independent cohort of adults from a published study (Mann et al., 2020). Several of these lipids were also recently reported to be significantly associated with disease outcomes in adults: (+) indicates a positive / (-) negative association between serum lipid levels and trait from Pietzner et al., 2021. Five lipids have previously been reported to have genome-wide significant loci and these variants are also independently associated with cardiometabolic traits on phenome-wide association

studies.

Figure legends

Figure 1. Overview of study design. Three groups of participants were included: lean controls, an obesity cohort, and cases biopsied for NAFLD. The association between baseline characteristics and histological severity of NAFLD was tested using linear regression. Plasma lipidomics was run in all three groups and analyzed using linear regression for HOMA-IR and liver-related traits. Meta-regression was performed on results from the obesity cohort and biopsied NAFLD cases. The 72 lipids associated with severity of NAFLD were annotated with four sets of results from adults. ALT, alanine aminotransferase; HFF, hepatic fat fraction; HOMA-IR, homeostatic model of insulin resistance; mWAS, metabolite-wide association study; NAS, NAFLD Activity Score; TE, transient elastography.

Figure 2. Associations between baseline characteristics and NAFLD Activity Score in children biopsied for NAFLD (n=122). Age (A), body mass index (BMI) z-score (B), and homeostatic model of insulin resistance (HOMA-IR, C) were positively associated with NAFLD Activity Score, whilst serum alanine aminotransferase (C) was negatively associated. Other aspartate aminotransferase (D) and total serum triglycerides (E) were not associated with NAFLD Activity Score. Associations were tested using linear regression. q-values were derived using the Benjamini-Hochberg method where significance is $q < .05$.

Figure 3. Associations between serum triglyceride species from LC-MS and fatty liver. Total TG was highest in the obese cohort (A) and positively associated with BMI z-score (B), but not associated with NAFLD Activity Score. Results from meta-regression are shown in D-I, where each dot represents a

different lipid species and those in red are lipids significantly associated with the trait on linear regression. In the obese cohort (n=146), TG chain length (D) and saturation (E) were negatively associated with serum ALT. In obese children who underwent MRS (n=95), TG chain length (F) and saturation (G) were also negatively associated with hepatic fat fraction. Very long-chain polyunsaturated TG were negatively associated with NAFLD Activity Score in children biopsied for NAFLD (H, I, & L). Whereas, positive associations were observed for short, mono-unsaturated TG with serum ALT (J) and hepatic fat fraction (K) in obese children. Panels B, C, J-L show results from linear regression used log-transformed lipid concentrations adjusted for age and sex, and give p-values where significance is $p < 3.3 \times 10^{-3}$. Panels D-I show results from meta-regression, trend line is accompanied by a grey shaded area to illustrate the 95% confidence interval and q-values (derived using the Benjamini-Hochberg method) where significance is $q < .05$.

Figure 4. Associations between serum phosphatidylcholine (PC) species from LC-MS and fatty liver. Total PC was lowest in the NAFLD cases (A) and negatively associated with NAFLD Activity Score (C). Results from meta-regression are shown in D-I, where each dot represents a different lipid species and those in red are lipids significantly associated with the trait on linear regression. In the obese cohort (n=146), there was no significant trend on meta-regression between PC chain length (D) and saturation (E) with serum ALT or hepatic fat fraction (n=95, F & G). Long-chain polyunsaturated PC were negatively associated with NAFLD Activity Score in children biopsied for NAFLD (H, I, & L). Whereas positive associations were observed for short, un/mono-unsaturated PC with serum ALT (J) and hepatic fat fraction (K) in obese children. Panels B, C, J-L show results from linear regression used log-transformed lipid concentrations adjusted for age and sex, and give p-values where significance is $p < 3.3 \times 10^{-3}$. Panels D-I show results from meta-regression, trend line is accompanied by a grey shaded area to illustrate the 95% confidence interval and q-values (derived using the Benjamini-Hochberg method) where significance is $q < .05$.

Figure 5. Additional significant associations between serum lipid species from LC-MS and fatty liver in children. Total lyso-phosphatidylcholines (LPC) were highest in the NAFLD cases (A) and positively associated with NAFLD Activity Score (B), particularly for the saturated LPC (e.g. LPC(18:0), C). Whereas total phosphatidylglycerols (PG, D) and total gangliosides (E) were lower in obese children than controls and lowest in the NAFLD cases. Results from meta-regression are shown in F & I, where each dot represents a different lipid species and those in red are lipids significantly associated with the trait on linear regression. Phosphatidylinositol (PI) chain length (F) and saturation (I) were negatively associated with NAFLD Activity Score. Some lipids, such as PG(40:0) (G) and hexosylceramide (40:1) (H) demonstrated non-linear associations with NAFLD activity score. Panels A, D, & E show results from comparison of means (using t-tests) for total lipid abundance for each species. Panels B, C, G, & H show results from linear regression used log-transformed lipid concentrations adjusted for age and sex, and give p-values where significance is $p < 3.3 \times 10^{-3}$. Panels F & I show results from meta-regression, trend line is accompanied by a grey shaded area to illustrate the 95% confidence interval and q-values (derived using the Benjamini-Hochberg method) where significance is $q < .05$.

Supplementary data

Table S1. Summary of baseline histology for children biopsied for NAFLD (n=122). Histology was scored according to the NASH CRN system.

Table S2. Associations between histology and traits for children biopsied for NAFLD (n=122). Beta represents the linear regression coefficient between histological outcome and baseline trait. Significance was defined as $q < 0.05$, using Benjamini-Hochberg method for FDR correction from p-values.

Table S3. Full results of associations between lipids (n=229) and traits. Beta represents the linear

regression coefficient between log-normalized serum lipid concentration and trait. Significance was defined as $p < 0.5/\sqrt{n}$, where n =number of lipids, due to high correlation between lipid species. Traits studies: ALT, serum alanine aminotransferase in the obese cohort ($n=146$); TE, transient elastography in the obese cohort ($n=42$); Fib, fibrosis stage on biopsy in the NAFLD cohort ($n=122$); Steat, histological steatosis severity in the NAFLD biopsied cohort ($n=122$); Portal, portal inflammation severity in the NAFLD biopsied cohort ($n=122$); NAFLD_HOMA, HOMA-IR in the NAFLD biopsied cohort ($n=122$); Ob_HOMA, HOMA-IR in the obese cohort ($n=146$); NAS, NAFLD Activity Score in the NAFLD biopsied cohort ($n=122$).

Table S4. Full results of meta-regression analyses between lipids saturation or chain length and traits. Beta represents the regression coefficient between lipid chain length ('Carb') or saturation ('db', for number of double bonds) and traits. Significance was defined as $q < 0.05$, using Benjamini-Hochberg method for FDR correction from p -values. Traits studies: Ob_HOMA, HOMA-IR in the obese cohort ($n=146$); Ob_HFF, hepatic fat fraction on magnetic resonance imaging in the obese cohort ($n=95$); Ob_TE, transient elastography in the obese cohort ($n=42$); NAFLD_NAS, NAFLD Activity Score in the NAFLD biopsied cohort ($n=122$); NAFLD_Steat, histological steatosis severity in the NAFLD biopsied cohort ($n=122$); NAFLD_Fib, fibrosis stage on biopsy in the NAFLD cohort ($n=122$); NALD_Portal, portal inflammation severity in the NAFLD biopsied cohort ($n=122$); NAFLD_HOMA, HOMA-IR in the NAFLD biopsied cohort ($n=122$); Ob_ALT, serum alanine aminotransferase in the obese cohort ($n=146$).

Table S5. Serum lipids significantly associated with histological severity of NAFLD in children.

Results from linear regressions log-normalized serum lipid concentration and traits. Significance was defined as $p < 0.5/\sqrt{n}$.

Table S6. Full results of overlap between lipids significantly associated with histological NAFLD in children from the current study and phenotypes in adult cohorts. Using data from two published

metabolomics studies (Mann et al. Hum Mol Genet (2020), and Pietzner et al. Nat Med (2021)) we filtered associations between lipids and traits with false-discovery rate corrected q-values of <0.1. Overlap was identified as significantly associated with lipids from the current study (Table S5) had a directionally consistent beta regression coefficient in the adult cohort. Traits assessed in Mann et al. Hum Mol Genet (2020): hepatic steatosis on abdominal ultrasound without ('Steatosis') and with adjusting for serum markers of insulin resistance ('Steatosis_IR_adjust'); association between lipids and variants in or near genes known to be associated with severity of NAFLD in adults (MTARC1, GCKR, MBOAT7, PNPLA3, TM6SF2, SERPINA1, PPP1R3B); insulin resistance (IR); body mass index (BMI); BMI-adjusted waist-to-hip ratio (WHRadjBMI); total body fat (BodyFat). Traits assessed in Pietzner et al. Nat Med (2021): breast cancer (breast_ca), cataracts (cataract_hosp), colonic carcinoma (colon_ca), death (dead), endometrial carcinoma (endmtrl_ca), fracture (frac_all_hosp), glaucoma (glaucoma_hosp), abdominal aortic aneurysm (inc_aaa), atrial fibrillation (inc_af), cardiac failure (inc_cardfail), cerebrovascular infarction (inc_cvainfct), diabetes (inc_diabetes), ischaemic heart disease (inc_ihd), liver disease (inc_liver), peripheral artery disease (inc_pad_all), kidney disease (inc_renadis), asthma (inc_resp_asth), chronic obstructive pulmonary disease (inc_resp_copd), venous thrombo-embolism (inc_venous_t), lung cancer (lung_ca), non-melanoma skin cancer (nmskin_ca), oesophageal cancer (oesoph_ca), rectal carcinoma (rectum_ca), and stomach carcinoma (stomach_ca).

Table S7. Previously published genome-wide significant loci for lipids associated with histological severity of NAFLD in children. Using data from published lipidomics GWAS we identified GWAS-significant loci (as defined by each contributing study) for the lipids listed in Table S5.

Table S8. Full results from a phenome-wide association study (PheWAS) for GWAS-significant variants from Table S7. Cardiometabolic traits were extracted from Phenoscanner_v2 and Tabassum et al. (2019) for each variant in Table S7, which corresponded to a lipid from Table S5.

Figure S1. Characteristics of obesity cohort and cases biopsied for NAFLD. Obesity cohort (n=146) (blue) was collected from any child who was overweight or obese referred for clinical assessment. The NAFLD cases (n=122, pink) were children with suspected severe paediatric NAFLD who underwent liver biopsy. There is no data shown from the lean group. The two overlying histograms illustrate the distribution of traits for body mass index (BMI) z-score (A), homeostatic model of insulin resistance (HOMA-IR, B), serum triglycerides (C), serum total cholesterol (D), and serum alanine aminotransferase (ALT, E). A subset (n=95) children from the obesity cohort underwent magnetic resonance spectroscopy (MRS) for estimation of liver fat (F). q-values represent comparison of means using t-test derived using the Benjamini-Hochberg method where significance is $q < .05$.

Figure S2. Associations between baseline characteristics and severity of peri-portal inflammation in children biopsied for NAFLD (n=122). None of the baseline characteristics demonstrated an association with severity of portal inflammation. Associations were tested using linear regression. q-values were derived using the Benjamini-Hochberg method where significance is $q < .05$.

Figure S3. Summary of serum lipidomics by LC-MS performed on 287 children. After normalization, there was no difference between lean (n=19), obese (n=146), and NAFLD (n=122) groups on principal component analysis (A). Lipids from each class were correlated using hierarchical clustering (B) but there was no clear distinction between obese and NAFLD groups. (C) Over 50 lipid species were significantly associated with individual traits within either the obese or NAFLD groups using linear regression adjusted for age and sex. The cell color on represents the beta regression coefficient for each analysis and stars illustrate p-values, where significance is $p < 3.3 \times 10^{-3}$. On meta-regression (D), lipid saturation and carbon chain length were significantly associated with several traits in both the obese and NAFLD groups. The cell color in (D) represents the meta-regression beta coefficient and stars illustrate q-values (derived using the Benjamini-Hochberg method) where significance is $q < .05$.

649

650

651

652

653 1. Loomba R, Friedman SL, Shulman GI. Mechanisms and disease consequences of nonalcoholic fatty
654 liver disease. *Cell*. 2021;184: 2537–2564.

655 2. Angulo P, Kleiner DE, Dam-Larsen S, Adams L a., Bjornsson ES, Charatcharoenwittaya P, et al.
656 Liver Fibrosis, but No Other Histologic Features, Is Associated With Long-term Outcomes of
657 Patients With Nonalcoholic Fatty Liver Disease. *Gastroenterology*. 2015;149: 389-397.e10.

658 3. Taylor RS, Taylor RJ, Bayliss S, Hagström H, Nasr P, Schattenberg JM, et al. Association Between
659 Fibrosis Stage and Outcomes of Patients With Nonalcoholic Fatty Liver Disease: A Systematic
660 Review and Meta-Analysis. *Gastroenterology*. 2020. doi:10.1053/j.gastro.2020.01.043

661 4. Brunt EM, Kleiner DE, Wilson LA, Sanyal AJ, Neuschwander-Tetri BA, Nonalcoholic
662 Steatohepatitis Clinical Research Network. Improvements in Histologic Features and Diagnosis
663 Associated With Improvement in Fibrosis in Nonalcoholic Steatohepatitis: Results From the
664 Nonalcoholic Steatohepatitis Clinical Research Network Treatment Trials. *Hepatology*. 2019;70:
665 522–531.

666 5. Baratta F, Pastori D, Angelico F, Balla A, Paganini AM, Cocomello N, et al. Nonalcoholic Fatty
667 Liver Disease and Fibrosis Associated With Increased Risk of Cardiovascular Events in a
668 Prospective Study. *Clin Gastroenterol Hepatol*. 2020;18: 2324-2331.e4.

669 6. Goldner D, Lavine JE. NAFLD in Children: Unique Considerations and Challenges.
670 *Gastroenterology*. 2020. doi:10.1053/j.gastro.2020.01.048

671 7. Lavine JE, Schwimmer JB, Van Natta ML, Molleston JP, Murrar KF, Rosenthal P, et al. Effect of
672 Vitamin E or Metformin for Treatment of Nonalcoholic Fatty Liver Disease in Children and
673 Adolescents: The TONIC Randomized Controlled Trial. *JAMA*. 2011;305: 1659–1668.

674 8. Feldstein AE, Charatcharoenwittaya P, Treeprasertsuk S, Benson JT, Enders FB, Angulo P. The
675 natural history of nonalcoholic fatty liver disease in children: a follow-up study for up to 20-years.
676 *Gut*. 2010;58: 1538–1544.

677 9. Carter-kent C, Yerian LM, Brunt EM, Angulo P, Kohli R, Ling SC, et al. Nonalcoholic
678 steatohepatitis in children: A multicentre clinicopathological study. *Hepatology*. 2009;50: 1113–
679 1120.

680 10. Brunt EM, Kleiner DE, Wilson L a., Unalp A, Behling CE, Lavine JE, et al. Portal chronic
681 inflammation in nonalcoholic fatty liver disease (NAFLD): a histologic marker of advanced
682 NAFLD-clinicopathologic correlation from the Nonalcoholic Steatohepatitis Clinical Research
683 Network. *Hepatology*. 2009;49: 809–820.

684 11. Puri P, Baillie RA, Wiest MM, Mirshahi F, Choudhury J, Cheung O, et al. A lipidomic analysis of
685 nonalcoholic fatty liver disease. *Hepatology*. 2007;46: 1081–1090.

- 686 12. Chiappini F, Coilly A, Kadar H, Gual P, Tran A, Desterke C, et al. Metabolism dysregulation
687 induces a specific lipid signature of nonalcoholic steatohepatitis in patients. *Sci Rep*. 2017;7: 46658.
- 688 13. Gorden DL, Myers DS, Ivanova PT, Fahy E, Maurya MR, Gupta S, et al. Biomarkers of NAFLD
689 progression: a lipidomics approach to an epidemic. *J Lipid Res*. 2015;56: 722–736.
- 690 14. Puri P, Wiest MM, Cheung O, Mirshahi F, Sargeant C, Min H-K, et al. The plasma lipidomic
691 signature of nonalcoholic steatohepatitis. *Hepatology*. 2009;50: 1827–1838.
- 692 15. Zhou Y, Orešič M, Leivonen M, Gopalacharyulu P, Hyysalo J, Arola J, et al. Non-invasive
693 Detection of Non-alcoholic Steatohepatitis Using Clinical Markers and Circulating Levels of Lipids
694 and Metabolites. *Clin Gastroenterol Hepatol*. 2016;14: 1463-1472.e6.
- 695 16. Anjani K, Lhomme M, Sokolovska N, Poitou C, Aron-Wisnewsky J, Bouillot J-L, et al. Circulating
696 phospholipid profiling identifies portal contribution to NASH signature in obesity. *J Hepatol*.
697 2015;62: 905–912.
- 698 17. Khusial RD, Cioffi CE, Caltharp SA, Krasinskas AM, Alazraki A, Knight-Scott J, et al.
699 Development of a Plasma Screening Panel for Pediatric Nonalcoholic Fatty Liver Disease Using
700 Metabolomics. *Hepatol Commun*. 2019;3: 1311–1321.
- 701 18. Hartley A, Santos Ferreira DL, Anderson EL, Lawlor DA. Metabolic profiling of adolescent non-
702 alcoholic fatty liver disease. *Wellcome Open Research*. 2018;3: 166.
- 703 19. Mann JP, Pietzner M, Wittemans LB, De Lucia Rolfe E, Nicola D, Imamura F, et al. Insights into
704 genetic variants associated with NASH-fibrosis from metabolite profiling. *Hum Mol Genet*. 2020;
705 doi: 10.1093/hmg/ddaa162.
- 706 20. Pietzner M, Stewart ID, Raffler J, Khaw K-T, Michelotti GA, Kastenmüller G, et al. Plasma
707 metabolites to profile pathways in noncommunicable disease multimorbidity. *Nat Med*. 2021;27:
708 471–479.
- 709 21. Tabassum R, Ramo JT, Ripatti P, Koskela JT, Kurki M, Karjalainen J, et al. Genetic architecture of
710 human plasma lipidome and its link to cardiovascular disease. *Nat Commun*. 2019;10: 4329.
- 711 22. Mann JP, Vreugdenhil A, Socha P, Jańczyk W, Baumann U, Rajwal S, et al. European paediatric
712 non-alcoholic fatty liver disease registry (EU-PNAFLD): Design and rationale. *Contemp Clin Trials*.
713 2018;75: 67–71.
- 714 23. van Werven JR, Marsman HA, Nederveen AJ, Smits NJ, ten Kate FJ, van Gulik TM, et al.
715 Assessment of hepatic steatosis in patients undergoing liver resection: comparison of US, CT, T1-
716 weighted dual-echo MR imaging, and point-resolved 1H MR spectroscopy. *Radiology*. 2010;256:
717 159–168.
- 718 24. Vajro P, Lenta S, Socha P, Dhawan A, McKiernan P, Baumann U, et al. Diagnosis of nonalcoholic
719 fatty liver disease in children and adolescents: position paper of the ESPGHAN Hepatology
720 Committee. *J Pediatr Gastroenterol Nutr*. 2012;54: 700–713.
- 721 25. Kleiner DE, Brunt EM, Van Natta M, Behling C, Contos MJ, Cummings OW, et al. Design and
722 validation of a histological scoring system for nonalcoholic fatty liver disease. *Hepatology*. 2005;41:
723 1313–1321.
- 724 26. Jenkins B, Ronis M, Koulman A. LC-MS Lipidomics: Exploiting a Simple High-Throughput

725 Method for the Comprehensive Extraction of Lipids in a Ruminant Fat Dose-Response Study.
726 Metabolites. 2020;10. doi:10.3390/metabo10070296

727 27. Rolfe E, Loos RJ, Druet C, Stolk RP, Ekelund U, Griffin SJ, et al. Association between birth weight
728 and visceral fat in adults. *Am J Clin Nutr.* 2010;92: 347–352.

729 28. Day N, Oakes S, Luben R, Khaw K-T, Bingham S, Welch A, et al. EPIC-Norfolk: Study design and
730 characteristics of the cohort. *Br J Cancer.* 1999;80: 95–103.

731 29. Kamat MA, Blackshaw JA, Young R, Surendran P, Burgess S, Danesh J, et al. PhenoScanner V2: an
732 expanded tool for searching human genotype-phenotype associations. *Bioinformatics.* 2019;35:
733 4851–4853.

734 30. R Core Team. A language and environment for statistical computing. Vienna, Austria: R Foundation
735 for Statistical Computing. ISBN 3-900051-07-0. <http://www.R-project.org>; 2019.

736 31. Feldman A, Eder SK, Felder TK, Paulweber B, Zandanell S, Stechemesser L, et al. Clinical and
737 metabolic characterization of obese subjects without non-alcoholic fatty liver: A targeted
738 metabolomics approach. *Diabetes Metab.* 2019;45: 132–139.

739 32. Ooi GJ, Meikle PJ, Huynh K, Earnest A, Roberts SK, Kemp W, et al. Hepatic lipidomic remodeling
740 in severe obesity manifests with steatosis and does not evolve with non-alcoholic steatohepatitis. *J*
741 *Hepatol.* 2021;75: 524–535.

742 33. Steinbrecher UP, Pritchard PH. Hydrolysis of phosphatidylcholine during LDL oxidation is mediated
743 by platelet-activating factor acetylhydrolase. *J Lipid Res.* 1989;30: 305–315.

744 34. Lambeau G, Gelb MH. Biochemistry and physiology of mammalian secreted phospholipases A2.
745 *Annu Rev Biochem.* 2008;77: 495–520.

746 35. Kim JY, Hyun YJ, Jang Y, Lee BK, Chae JS, Kim SE, et al. Lipoprotein-associated phospholipase
747 A2 activity is associated with coronary artery disease and markers of oxidative stress: a case-control
748 study. *Am J Clin Nutr.* 2008;88: 630–637.

749 36. Ha CY, Kim JY, Paik JK, Kim OY, Paik Y-H, Lee EJ, et al. The association of specific metabolites
750 of lipid metabolism with markers of oxidative stress, inflammation and arterial stiffness in men with
751 newly diagnosed type 2 diabetes. *Clin Endocrinol.* 2012;76: 674–682.

752 37. Alexander M, Loomis AK, van der Lei J, Duarte-Salles T, Prieto-Alhambra D, Ansell D, et al. Non-
753 alcoholic fatty liver disease and risk of incident acute myocardial infarction and stroke: findings
754 from matched cohort study of 18 million European adults. *BMJ.* 2019;367: 15367.

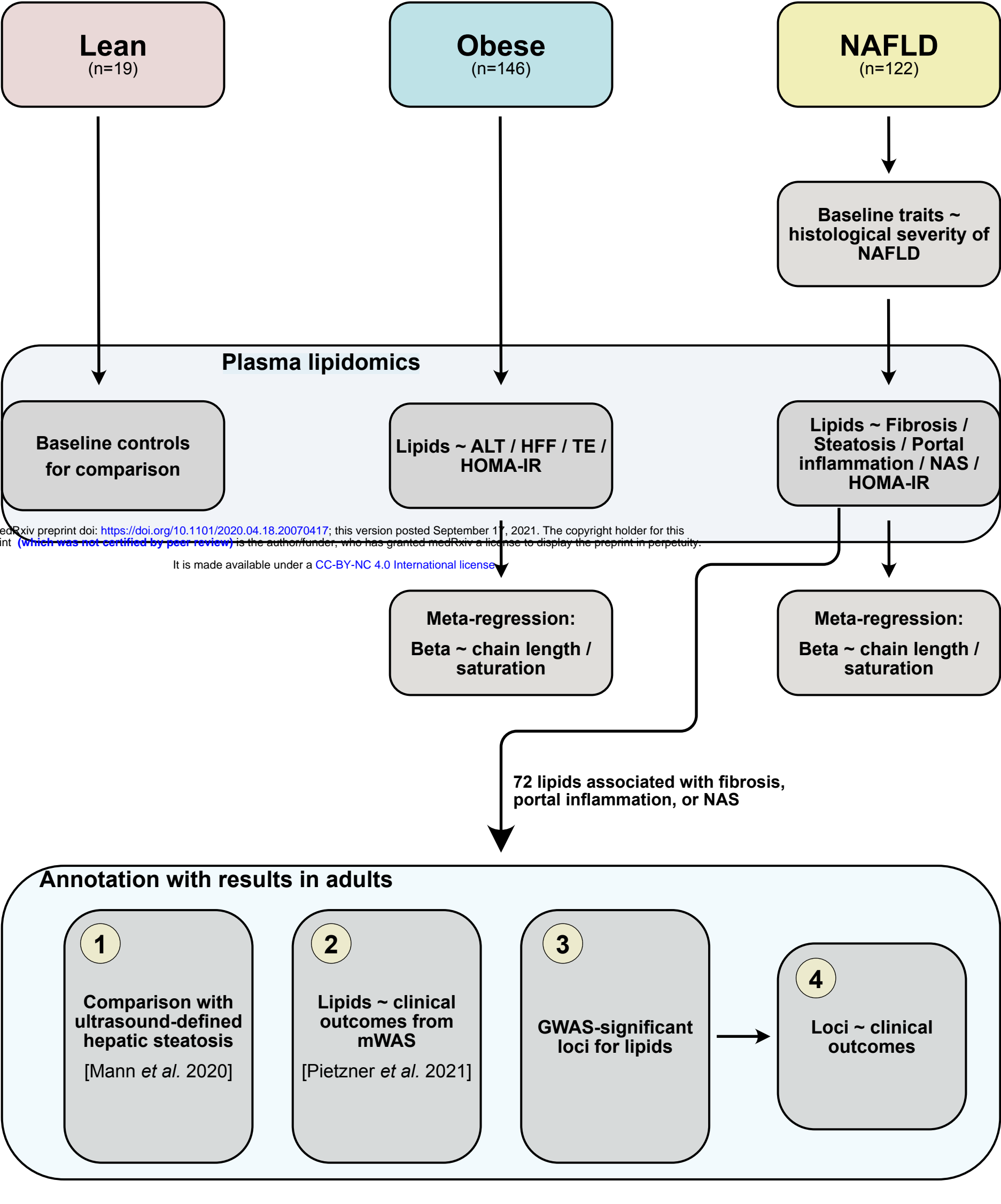
755 38. Mazzone A, Tietz P, Jefferson J, Pagano R, LaRusso NF. Isolation and characterization of lipid
756 microdomains from apical and basolateral plasma membranes of rat hepatocytes. *Hepatology.*
757 2006;43: 287–296.

758 39. Donnelly KL, Smith CI, Schwarzenberg SJ, Jessurun J, Boldt MD, Parks EJ. Sources of fatty acids
759 stored in liver and secreted via lipoproteins in patients with nonalcoholic fatty liver disease. *J Clin*
760 *Invest.* 2005;115: 1343–1351.

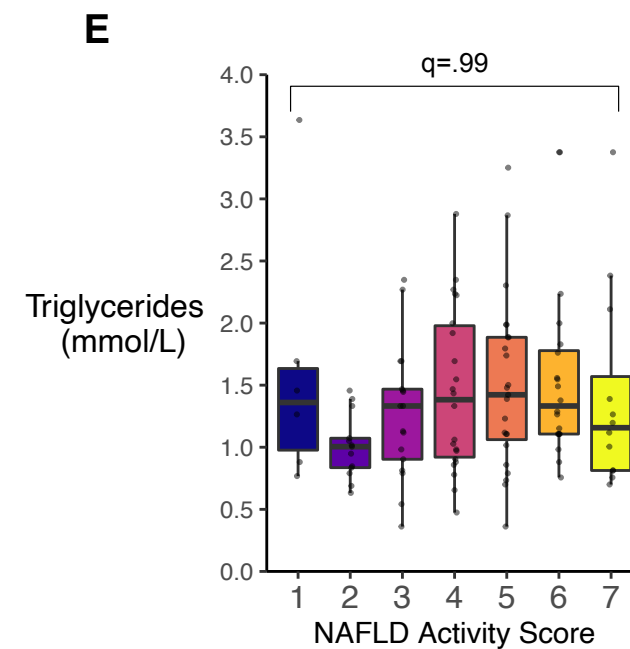
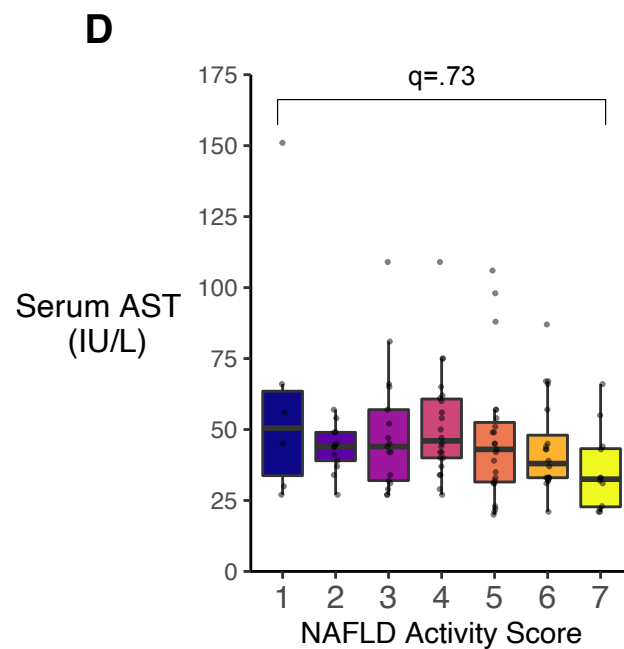
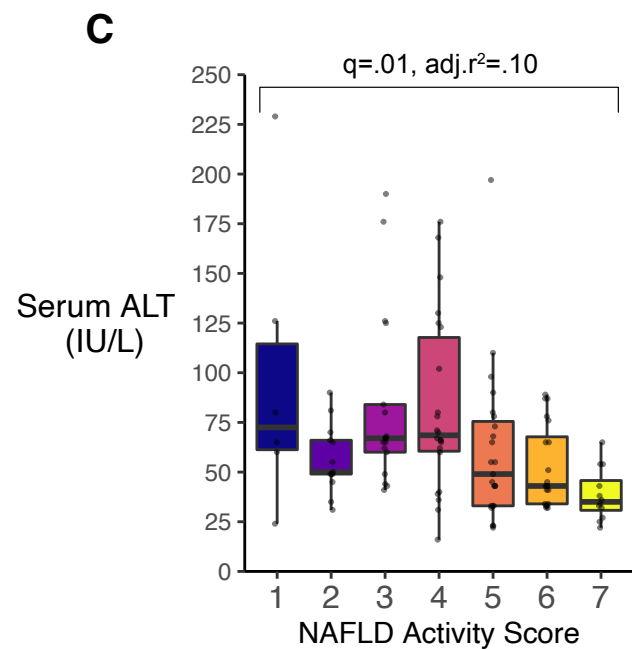
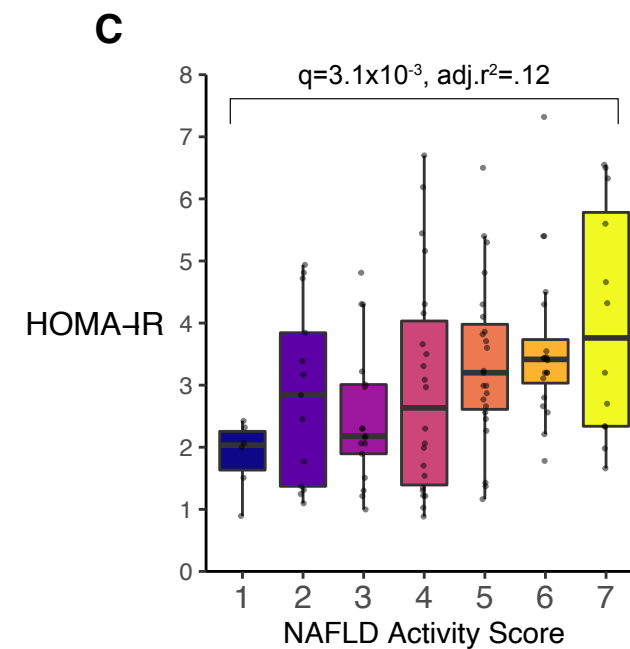
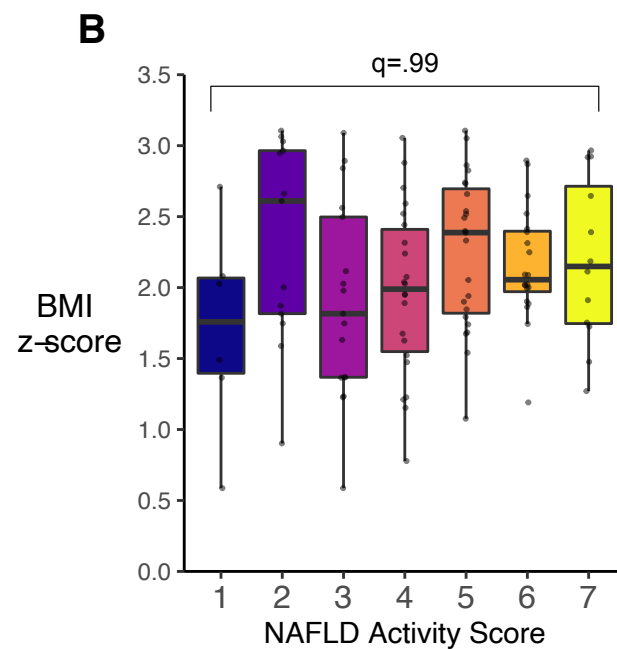
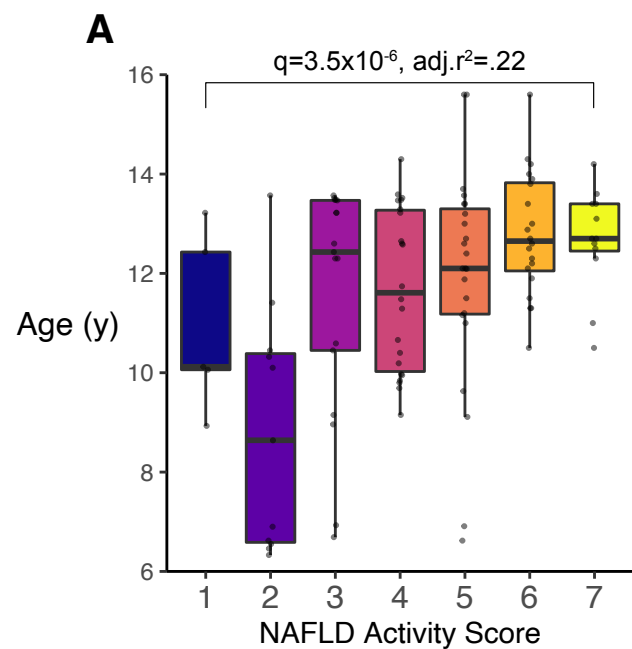
761 40. Smith GI, Shankaran M, Yoshino M, Schweitzer GG, Chondronikola M, Beals JW, et al. Insulin
762 resistance drives hepatic de novo lipogenesis in nonalcoholic fatty liver disease. *J Clin Invest.*
763 2020;130: 1453–1460.

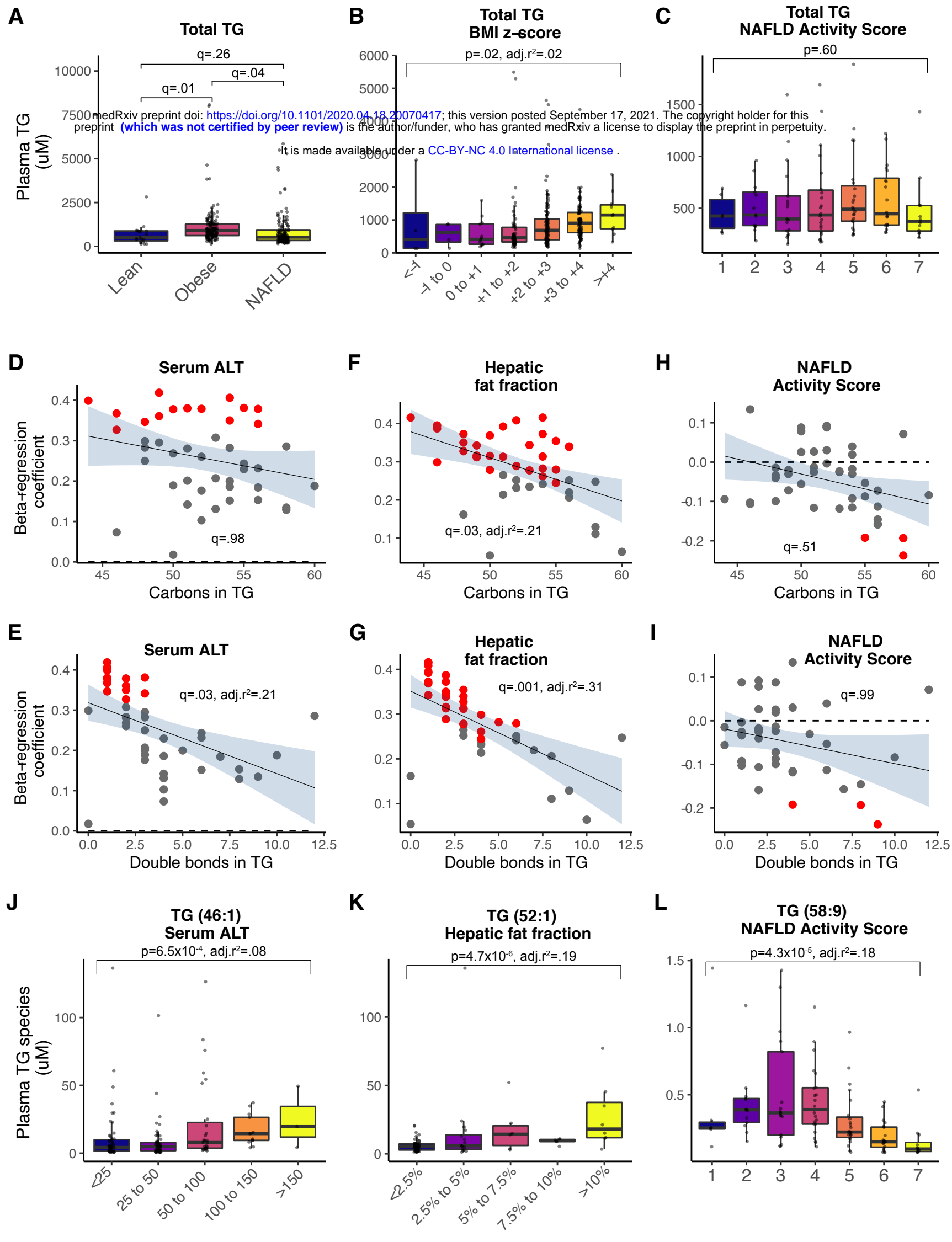
- 764 41. Lambert JE, Ramos-Roman MA, Browning JD, Parks EJ. Increased de novo lipogenesis is a distinct
765 characteristic of individuals with nonalcoholic fatty liver disease. *Gastroenterology*. 2014;146: 726–
766 735.
- 767 42. Pagliarunga S, Dehn CA. Clinical assessment of hepatic de novo lipogenesis in non-alcoholic fatty
768 liver disease. *Lipids Health Dis*. 2016;15: 159.
- 769 43. Sanders FWB, Acharjee A, Walker C, Marney L, Roberts LD, Imamura F, et al. Hepatic steatosis
770 risk is partly driven by increased de novo lipogenesis following carbohydrate consumption. *Genome*
771 *Biol*. 2018;19: 79.
- 772 44. Eiden M, Koulman A, Hatunic M, West JA, Murfitt S, Osei M, et al. Mechanistic insights revealed
773 by lipid profiling in monogenic insulin resistance syndromes. *Genome Med*. 2015;7: 63.
- 774 45. Draijer LG, Froom-Torenstra D, van Weeghel M, Vaz FM, Bohte AE, Holleboom AG, et al.
775 Lipidomics in Nonalcoholic Fatty Liver Disease: Exploring Serum Lipids as Biomarkers for
776 Pediatric Nonalcoholic Fatty Liver Disease. *J Pediatr Gastroenterol Nutr*. 2020;71: 433–439.
- 777 46. Miccheli A, Capuani G, Marini F, Tomassini A, Praticò G, Ceccarelli S, et al. Urinary (1)H-NMR-
778 based metabolic profiling of children with NAFLD undergoing VSL#3 treatment. *Int J Obes* .
779 2015;39: 1118–1125.
- 780 47. Jin R, Banton S, Tran VT, Konomi JV, Li S, Jones DP, et al. Amino Acid Metabolism is Altered in
781 Adolescents with Nonalcoholic Fatty Liver Disease-An Untargeted, High Resolution Metabolomics
782 Study. *J Pediatr*. 2016;172: 14-19.e5.
- 783 48. Troisi J, Pierri L, Landolfi A, Marciano F, Bisogno A, Belmonte F, et al. Urinary Metabolomics in
784 Pediatric Obesity and NAFLD Identifies Metabolic Pathways/Metabolites Related to Dietary Habits
785 and Gut-Liver Axis Perturbations. *Nutrients*. 2017;9. doi:10.3390/nu9050485
- 786 49. Kaikkonen JE, Würtz P, Suomela E, Lehtovirta M, Kangas AJ, Jula A, et al. Metabolic profiling of
787 fatty liver in young and middle-aged adults: Cross-sectional and prospective analyses of the Young
788 Finns Study. *Hepatology*. 2017;65: 491–500.
- 789 50. Goffredo M, Santoro N, Tricò D, Giannini C, D’Adamo E, Zhao H, et al. A Branched-Chain Amino
790 Acid-Related Metabolic Signature Characterizes Obese Adolescents with Non-Alcoholic Fatty Liver
791 Disease. *Nutrients*. 2017;9. doi:10.3390/nu9070642
- 792 51. Würtz P, Soininen P, Kangas AJ, Rönnemaa T, Lehtimäki T, Kähönen M, et al. Branched-chain and
793 aromatic amino acids are predictors of insulin resistance in young adults. *Diabetes Care*. 2013;36:
794 648–655.
- 795 52. Lotta LA, Scott RA, Sharp SJ, Burgess S, Luan J, Tillin T, et al. Genetic Predisposition to an
796 Impaired Metabolism of the Branched-Chain Amino Acids and Risk of Type 2 Diabetes: A
797 Mendelian Randomisation Analysis. *PLoS Med*. 2016;13: e1002179.
- 798 53. Alkhouri N, Cikach F, Eng K, Moses J, Patel N, Yan C, et al. Analysis of breath volatile organic
799 compounds as a noninvasive tool to diagnose nonalcoholic fatty liver disease in children. *Eur J*
800 *Gastroenterol Hepatol*. 2014;26: 82–87.
- 801 54. Del Chierico F, Nobili V, Vernocchi P, Russo A, Stefanis CD, Gnani D, et al. Gut microbiota
802 profiling of pediatric nonalcoholic fatty liver disease and obese patients unveiled by an integrated

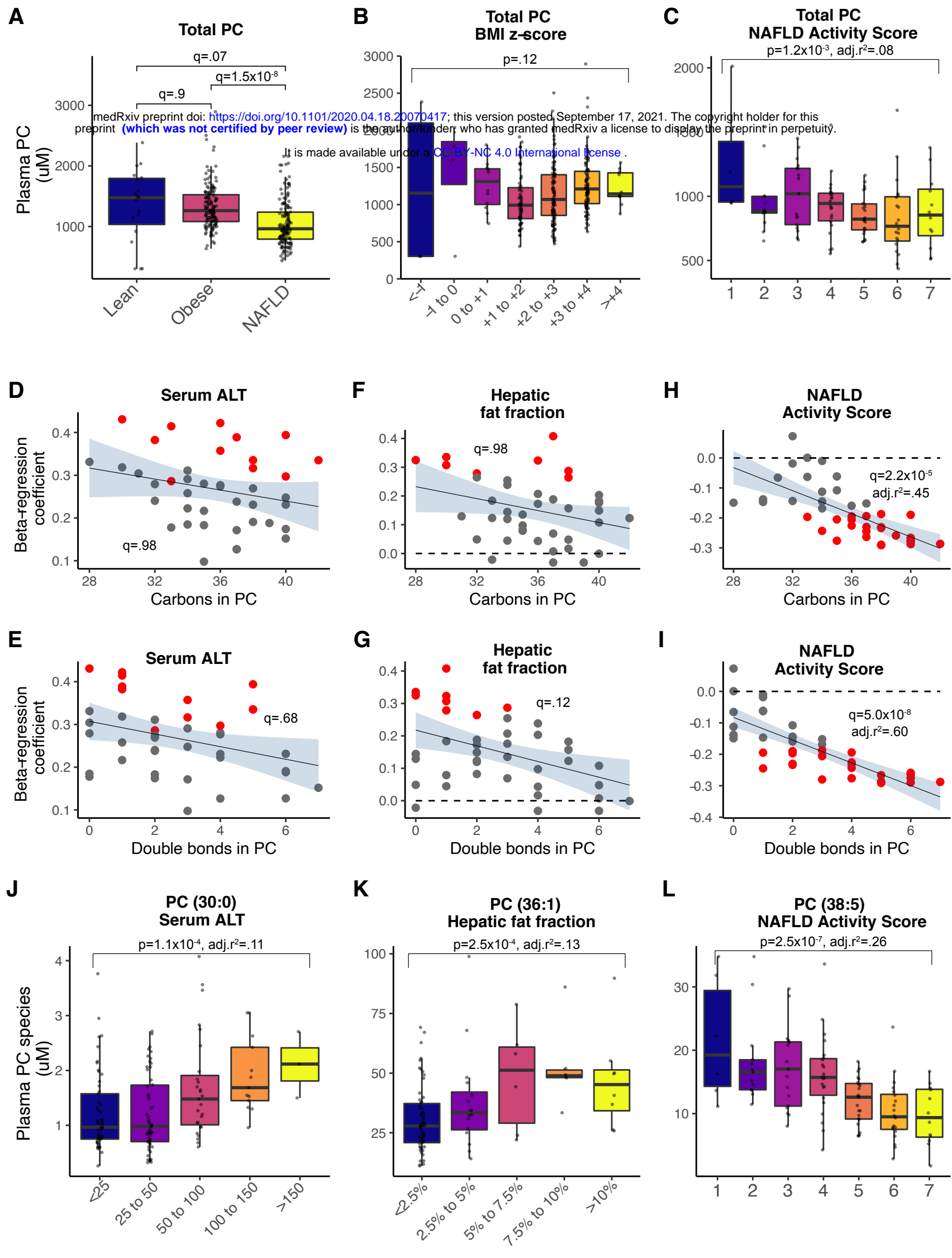
803 meta-omics-based approach. Hepatology. 2017;65: 451–464.

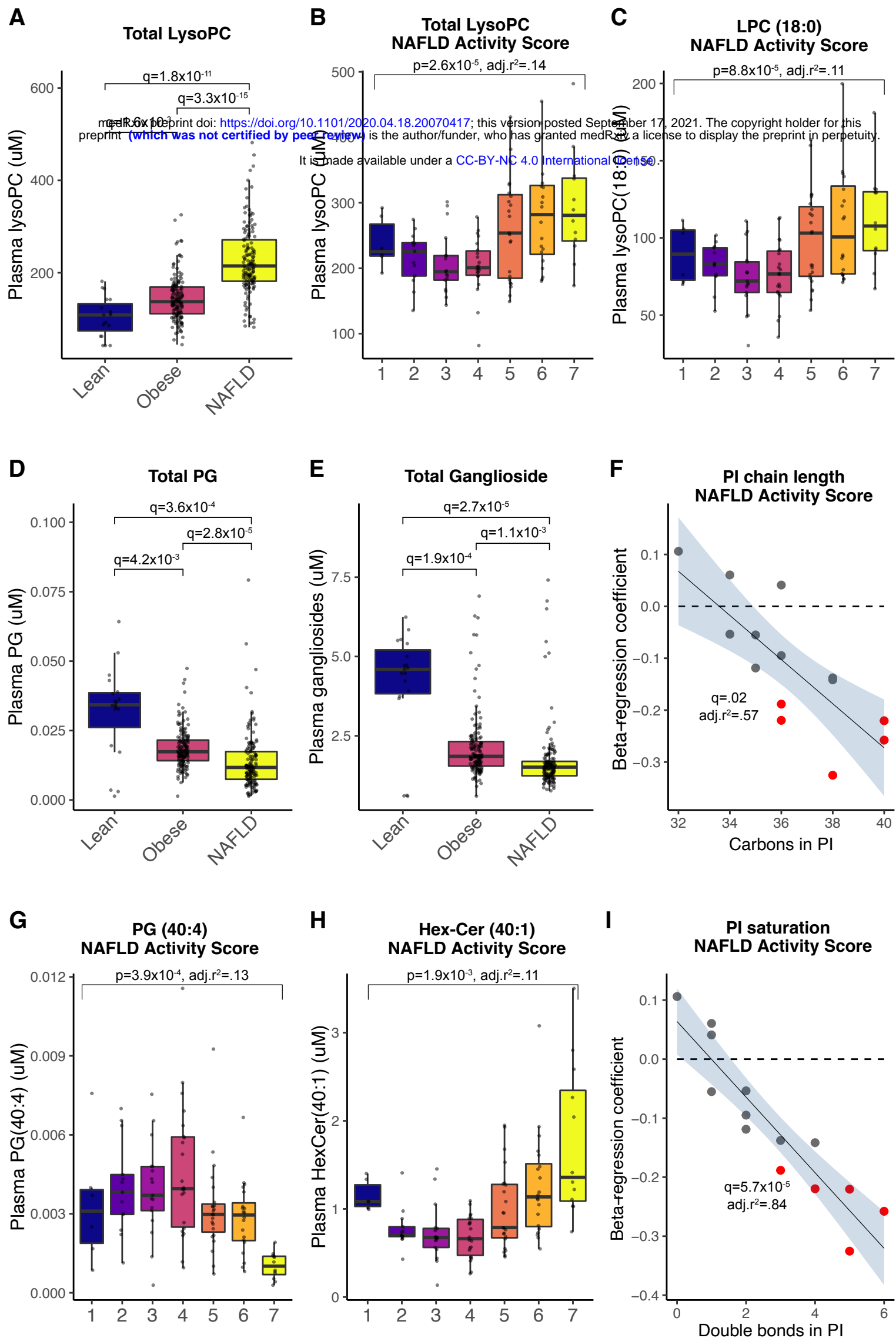


medRxiv preprint doi: <https://doi.org/10.1101/2020.04.18.20070417>; this version posted September 17, 2021. The copyright holder for this preprint (which was not certified by peer review) is the author/funder, who has granted medRxiv a license to display the preprint in perpetuity. It is made available under a CC-BY-NC 4.0 International license.









	Overall	Lean controls	Obese cohort	NAFLD cases	q-value
n	287	19	146	122	
Age (years)	13.0 (2.8)	11.0 (3.4)	14.2 (2.4)	12.0 (2.5)	1.00E-10
Female sex	162 (52.4)	10 (52.6)	76 (52.1)	76 (52.8)	
BMI z-score	2.48 (1.1)	-0.04 (1.2)	3.16 (0.6)	2.15 (0.6)	5.00E-27
HOMA-IR	3.6 (2.2)		3.8 (2.6)	3.2 (1.7)	0.74
Hypertension, n/total (%)	74/233 (32)		59/119 (50)	15/114 (13)	2.40E-9
Triglycerides (mmol/L)	1.2 (0.7)		1.0 (0.6)	1.4 (0.7)	1.60E-07
Total cholesterol (mmol/L)	4.2 (0.8)		4.0 (0.8)	4.3 (0.9)	0.35
HDL cholesterol (mmol/L)	1.1 (0.3)		1.1 (0.3)	1.1 (0.3)	1
LDL cholesterol (mmol/L)	2.5 (0.6)		2.5 (0.7)	2.6 (0.5)	0.07
ALT (IU/L)	55.3 (41.8)		41.9 (37.4)	69.3 (41.7)	8.1E-13
AST (IU/L)	38.6 (20.7)		30.0 (14.5)	47.7 (22.3)	2.3E-16
GGT (IU/L)	25.4 (12.8)		24.3 (11.8)	36.4 (17.3)	9.0E-03
ALP (IU/L)	200.8 (122.3)		184.3 (113.6)	260.1 (139.7)	0.66
Hepatic fat fraction on MRS (%)	3.6 (4.7)		3.6 (4.7)		

Table 1. Baseline characteristics of participants included in the study. Lean children (n=19) were those undergoing endoscopy who had no evidence of gastrointestinal pathology. Obesity cohort (n=146) comprised children who were overweight or obese referred and for clinical assessment. The NAFLD cases (n=122) were children with suspected severe paediatric NAFLD who underwent liver biopsy. q-values represent false-discovery rate correct p-values between obesity and NAFLD cohorts, using unpaired t-tests for continuous traits and chi-squared for sex. Data represents mean (standard deviation) for continuous traits and number (%) for categorical traits. ALP, alkaline phosphatase; ALT, alanine aminotransferase; AST, aspartate aminotransferase; BMI, body mass index; GGT, gamma-glutamyl transferase; HDL, high density lipoprotein; HOMA-IR, homeostatic model of insulin resistance; LDL, low density lipoprotein; MRS, magnetic resonance spectroscopy.

Lipid	Association with NAS in children (current study)		Association with steatosis in adults (from Mann et al. 2020)		Associated disease outcomes in adults (from Pietzner et al. 2021)	GWAS-significant variants in or near genes	Cardiometabolic traits identified from PheWAS
	Beta	p-value	Beta	p-value			
LysoPC 16:0	0.20	1.1E-03	0.06	1.7E-05	breast_ca (+), glaucoma_hosp (+), nmskin_ca (+)	LIPC, MAF, MFSD2A	IHD, Death from PVD/mesenteric ischaemia/SAH, Metabolic syndrome
PC 36:4	-0.23	1.5E-04	-0.12	8.8E-03	colon_ca (-), dead (-), endmtrl_ca (-), inc_cardfail (-), inc_diabetes (-), inc_resp_asth (-) , inc_resp_copd (-), inc_venous_t (-)	FADS1-2-3, FADS2	Death from CVD, Serum ALP, Arterial thrombosis, HbA1c, Fasting glucose, Metabolic syndrome, Colorectal cancer, Limb fat
PC 37:4	-0.19	9.4E-04	-0.21	1.2E-06		FADS2	Death from CVD, Serum ALP, Arterial thrombosis, HbA1c, Fasting glucose, Metabolic syndrome, Colorectal cancer, Limb fat
PC 38:3	-0.19	1.0E-03	-0.27	1.2E-09		FADS1-2-3	HbA1c, Fasting glucose, Metabolic syndrome, Colorectal cancer, Limb fat

PC 38:5	-0.29	2.5E-07	-0.22	1.4E-06	dead (-), inc_resp_asth (-)	FADS2	Death from CVD, Serum ALP, Arterial thrombosis, HbA1c, Fasting glucose, Metabolic syndrome, Colorectal cancer, Limb fat
PC 38:6	-0.29	4.5E-07	-0.06	3.3E-06	dead (-), dead (-), inc_cardfail (-), inc_pad_all (-), inc_resp_asth (-), inc_resp_asth (-), inc_resp_copd (-), inc_resp_copd (-)		
PC 40:2	-0.19	2.0E-03	-0.31	6.2E-12			
PC 40:7	-0.29	5.8E-07	-0.23	3.8E-07	breast_ca (-), dead (-), inc_diabetes (-), inc_resp_asth (-), inc_resp_copd (-), lung_ca (-)		
TG 58:9	-0.24	4.3E-05	-0.09	4.2E-02			

Table 2. Summary table of top lipids associated with histological severity of NAFLD with children. Lipids were included if: significantly associated with NAFLD Activity Score in children on linear regression adjusted for age and sex, and showed a directionally consistent association with hepatic steatosis on ultrasound in an independent cohort of adults from a published study (Mann et al., 2020). Note that betas are not directly comparable between the current study and Mann et al. 2020 due to differences in analyses. Several of these lipids were also recently reported to be significantly associated with disease outcomes in adults: (+) indicates a positive / (-) negative association between serum lipid levels and trait from Pietzner et al., 2021. Five lipids have previously been reported to have

genome-wide significant loci and these variants are also independently associated with cardiometabolic traits on phenome-wide association studies. ALP, alkaline phosphatase; CVD, cardiovascular disease; LysoPC, lyso-phosphatidylcholine; PC, phosphatidylcholine; TG, triglyceride.

,