

1 **Sero-epidemiological evaluation of malaria transmission in The Gambia before and after mass**
2 **drug administration**

3

4 **Author details**

5 Lindsey Wu¹, Julia Mwesigwa², Muna Affara³, Mamadou Bah², Simon Correa², Tom Hall⁴, James G.
6 Beeson^{5,6,7}, Kevin K.A. Tetteh¹, Immo Kleinschmidt^{8,9}, Umberto D’Alessandro², Chris Drakeley¹

7 ***Corresponding author:** lindsey.wu@lshtm.ac.uk

8 1. London School of Hygiene and Tropical Medicine (LSHTM), Faculty of Infectious Tropical Diseases,
9 Department of Infection Biology. London WC1E 7HT, UK.

10 2. Medical Research Council Unit The Gambia at London School of Hygiene and Tropical Medicine.
11 Fajara, The Gambia.

12 3. Bernhard Nocht Institute for Tropical Medicine (BNITM). Arusha, Tanzania.

13 4. St. George’s University of London (SGUL). SW17 0RE, London, United Kingdom.

14 5. Burnet Institute. Melbourne, Victoria, 3004, Australia.

15 6. Central Clinical School, Monash University, Victoria, Australia

16 7. Department of Medicine, University of Melbourne, Victoria, Australia.

17 8. London School of Hygiene and Tropical Medicine (LSHTM), Faculty of Epidemiology and Population
18 Health, Department of Infectious Disease Epidemiology. London WC1E 7HT, UK.

19 9. School of Pathology, Wits Institute for Malaria Research, Faculty of Health Science, University of
20 Witwatersrand. Johannesburg, South Africa.

21

22 **Email addresses:**

23 LW: lindsey.wu@lshtm.ac.uk

24 JM: julia.mwesigwa@lshtm.ac.uk

NOTE: This preprint reports new research that has not been certified by peer review and should not be used to guide clinical practice.

25 MA: affara@bnitm.de

26 MB: mmbah@mrc.gm

27 SC: scorrea@mrc.gm

28 TH: thall@sgul.ac.uk

29 JGB: beeson@burnet.edu.au

30 KKAT: kevin.tetteh@lshtm.ac.uk

31 IK: immo.kleinschmidt@lshtm.ac.uk

32 UD: umberto.dalessandro@lshtm.ac.uk

33 CD: chris.drakeley@lshtm.ac.uk

34

35 Keywords: malaria, serology, mass drug administration, surveillance

36 Abstract: 246

37 Word count: 3,392

38

39

40 **Abstract**

41 **Background**

42 As The Gambia aims to achieve elimination by 2030, serological assays are a useful surveillance tool
43 to monitor trends in malaria incidence and evaluate community-based interventions.

44 **Methods**

45 Within a mass drug administration (MDA) study in The Gambia, where reduced malaria infection and
46 clinical disease were observed after the intervention, a serological sub-study was conducted in four
47 study villages. Spatio-temporal variation in transmission was measured with a panel of recombinant
48 *Pf* antigens on a multiplexed bead-based assay. Village-level antibody levels were quantified as under-
49 15 sero-prevalence, sero-conversion rates, and age-adjusted antibody acquisition rates. Antibody
50 levels prior to MDA were assessed for association with persistent malaria infection after community
51 chemoprophylaxis.

52 **Results**

53 Seasonal changes in antibodies to Etramp5.Ag1 were observed in children under 15 in two
54 transmission settings – the West Coast and Upper River Regions (4·32% and 31·30% *Pf* prevalence,
55 respectively). At the end of the malaria season, short-lived antibody responses to Etramp5.Ag1,
56 GEXP18, HSP40.Ag1, EBA175 RIII-V, and Rh2.2030 were lower amongst 1-15 year olds in the West
57 Coast compared to the Upper River, reflecting known differences in transmission. Prior to MDA,
58 individuals in the top 50th percentile of antibody levels had two-fold higher odds of clinical malaria
59 during the transmission season, consistent with previous findings where individuals infected pre-MDA
60 had 2-fold higher odds of re-infection post-MDA.

61 **Conclusion**

62 Serological markers can serve dual functions as indicators of malaria exposure and incidence. Further
63 studies, particularly cluster randomised trials, can help establish standardised serological protocols to
64 measure transmission across endemic settings.

65 **Background**

66 In malaria elimination settings, heterogeneity and hotspots of transmission are increasingly prevalent
67 as disease burden declines.¹⁻⁵ At low transmission, large proportions of the population can remain
68 malaria free for years, while subpopulations experience multiple episodes^{3,4,6}. This presents significant
69 challenges for the implementation of malaria interventions and clinical trials designed to evaluate
70 them^{7,8}; if untargeted, residual transmission is likely to persist.^{5,9-11} Therefore, understanding why
71 malaria has significantly changed in some settings, but remains unyielding in others, will be critical
72 for guiding investments in malaria control in Sub-Saharan Africa.^{12,13}

73 The Gambia has a long history of research on the heterogeneity of malaria in West Africa.
74 Entomological and clinical data have shown spatial variation in malaria infections within two
75 kilometres of mosquito breeding sites, where immune differences between households was
76 hypothesised to drive differences in clinical outcomes.¹⁴ Studies in The Gambia have also
77 demonstrated the impact of insecticide-treated bed nets on childhood mortality,^{15,16} with additional
78 reductions in clinical malaria when combined with chemoprophylaxis.¹⁷ Subsequently, there have
79 been rapid declines in incidence through the scale-up of control interventions - improved diagnosis
80 and treatment, distribution of long-lasting insecticidal nets, indoor residual spraying, and seasonal
81 malaria chemoprevention. However, micro-epidemiological variations in transmission remain,^{18,19}
82 which are increasingly relevant as The Gambia aims for malaria elimination by 2030. Sufficiently
83 sensitive diagnostics will be critical to reach this target, helping to identify foci of transmission and
84 target interventions.

85 Serological studies in The Gambia have described country-wide heterogeneities in malaria
86 transmission, where schools surveys found strong correlations between sero-prevalence and

87 microscopy-detectable parasitaemia.²⁰ More recently, studies based on data from Uganda and Mali
88 have identified several serological markers of *Plasmodium falciparum* (*Pf*) malaria exposure that are
89 strongly associated with clinical incidence²¹. These measures of sero-incidence have the potential to
90 supplement existing surveillance tools to monitor transmission and evaluate the effectiveness of
91 community interventions.

92 While serology has been used in research settings to measure malaria transmission for some time,
93 standardised antigen panels for routine surveillance have yet to be established. Furthermore, gaps in
94 our understanding of how antibody levels reflect changes in transmission still remain. Therefore, this
95 study evaluates the use of antibody responses as a measure of malaria exposure and incidence, with
96 the aim to inform the future design of surveillance strategies. We used serological markers to measure
97 spatio-temporal variation in transmission in a subset of four study villages from the Malaria
98 Transmission Dynamics Study in The Gambia, which assessed epidemiological trends in six village
99 pairs,^{18,19} followed by two years of mass drug administration (MDA) with dihydroartemisinin-
100 piperaquine (DHA-PQ).²² A panel of recombinant *Pf* antigens was used to quantify antibody levels
101 using a multiplexed immuno-assay. Village-level serological profiles were used to describe seasonal
102 and geographical variation in antibody responses, and the association between antibody levels prior
103 to MDA and persistent malaria infection during the transmission season after MDA was also
104 estimated.

105 **Methods**

106 **Data and sampling**

107 A prospective cohort study was conducted from 2013 to 2015 in six village pairs across five
108 administrative regions - West Coast (WCR), North Bank (NBR), Lower River (LRR), Central River (CRR)
109 and Upper River (URR) Regions. *Pf* prevalence measured by PCR ranged from 2.27 to 19.60% in the
110 Central River and Upper River Regions respectively. As previously described by Mwesigwa et al,¹⁹ the
111 study aimed to understand the dynamics of malaria infection and the impact of annual MDA. All

112 residents aged more than six months were enrolled. Monthly surveys were conducted throughout
113 the transmission season (June to December), the dry season (April 2014) and before MDA
114 implemented in May and June. In 2014 and 2015, one round of MDA was conducted, with DHA-PQ
115 administered to individuals aged between six months and 75 years, according to weight-based dosing
116 guidelines, over 6 to 14 days between May and June in the six pairs of study villages. Outcomes
117 included incidence of clinical disease, prevalence of *Pf* infection measured by polymerase chain
118 reaction (PCR), and factors associated with infection post-MDA.

119 Blood samples were collected by finger prick for haemoglobin measurement, blood smear for malaria
120 diagnosis by microscopy, and molecular and serological analysis by dried blood spot (DBS) on filter
121 paper (Whatman 3 Corporation, Florham Park, NJ, USA). Clinical malaria cases were identified by
122 passive case detection (PCD) at local health facilities or in villages by study nurses; clinical malaria was
123 defined as history of fever in the previous 24 hours or axillary temperature $\geq 37.5^{\circ}\text{C}$ and a positive
124 rapid diagnostic test (RDT) result (Paracheck *Pf*, Orchid Biomedical System, India).

125 Serological analysis included all available samples from the WCR in Besse and N'Demban from surveys
126 done at the start of the transmission season in July 2013 (N=537) and at the end of the season in
127 December 2013 (N=526). In the URR, analysis included all samples collected in Njaiyal and Madina
128 Samako in July 2013 (N=779), December 2013 (N=632), April (dry season) 2014 (N=823), and
129 December 2014 (N=757). These regions are at the extreme of transmission intensity found in The
130 Gambia – low in WCR and moderate in URR - with months selected at the start and end of the
131 transmission season. Samples from clinical PCD cases were linked by study participant identification
132 code to samples from the same individuals collected during routine monthly surveys. Samples
133 collected as part of the Malaria Transmission Dynamics Study and subset of samples for serological
134 analysis are described in Figure 1.

135 **Laboratory procedures**

136 A full description of laboratory methods, including antigen amino acid range, selection and expression
137 platform, are detailed in Wu et al²³ and Mwesigwa et al²⁴. Briefly, serum samples were eluted from
138 6mm DBS (8 µL whole blood equivalent) and prepared as a 1:500 dilution. Two wells on each plate
139 containing only antigen-coupled beads and sample buffer were included to measure background
140 signal. A pool of 22 serum samples from malaria hyper-immune individuals in The Gambia were used
141 as positive controls in a 6-point 5-fold serial dilution (1:10 – 1:31,250) and plasma samples from
142 European malaria-naive adults (1:500 dilution) as negative controls. Serum samples were processed
143 on the Luminex MAGPIX, with mean fluorescence intensity (MFI) values between plates normalised
144 according to the protocol described in Wu et al.²⁵

145 For diagnostic PCR, DNA was extracted from three 6-mm DBS (4 µL whole blood equivalent) using the
146 automated QIAextractor robot (Qiagen). Negative and positive (3D7) controls were included to control
147 for cross contamination and DNA extraction efficiency, respectively. Extracted DNA was used in a
148 nested PCR, amplifying multi-copy *Plasmodium* ribosomal RNA gene sequences using genus and
149 species-specific primers. All PCR products were run using the QIAxcel capillary electrophoresis system
150 (Qiagen).

151 **Statistical analyses**

152 Antibody responses were summarised at village level and used to describe geographical differences in
153 transmission between WCR (low transmission) and URR (moderate-high transmission). Within each
154 region, temporal changes were assessed using antibody responses at the start and end of transmission
155 season (July and December 2013) and the dry season (April 2014), represented with the methods as
156 summarised below.

157 **Sero-prevalence and sero-conversion rate.** For antigens associated with longer lived antibody
158 responses - *P.falciparum* merozoite surface antigen 1 19-kDa carboxy-terminal region (*PfMSP1₁₉*) and
159 *P.falciparum* apical membrane antigen 1 (*PfAMA1*), the distribution of MFI for all serological samples
160 was characterised through a two-component Gaussian mixture model to define distributions of

161 negative and positive antibody levels. Sero-positivity thresholds were defined as the mean log MFI
162 plus two standards deviations of the negative distribution.²⁶ For antigens associated with shorter-lived
163 antibodies – early transcribed membrane protein 5 (Etramp5.Ag1), gametocyte export protein 18
164 (GEXP18), heat shock protein 40 (HSP40.Ag1), erythrocyte binding antigen 175 RIII-V (EBA175),
165 reticulocyte binding protein homologue 2 (Rh2.2030) - sero-positivity thresholds were defined by the
166 mean log MFI plus three standard deviations of 71 malaria-naïve European blood donors used as
167 negative controls.

168 Age-adjusted sero-conversion rates (SCRs), the annual rate at which sero-negative individuals become
169 sero-positive, were estimated for antigens associated with long-lived antibody response (*PfMSP1₁₉*,
170 *PfAMA1*). A reversible catalytic model was fitted to age-adjusted sero-positivity data using maximum
171 likelihood methods.²⁷ A common sero-reversion rate for each antigen was assumed across all villages,
172 which was estimated based on fitting a single sero-catalytic model to all individuals and fixing the sero-
173 reversion rate in subsequent model fits. Additionally, sero-prevalence was estimated for children aged
174 1-15 years. Given the lower likelihood of long-lived antibodies from previous malaria exposure, sero-
175 positivity in this age group is more likely to reflect recent infection.^{20,28}

176 ***Age-dependent antibody acquisition.*** Antibody acquisition models^{29,30} were used to estimate age-
177 dependent changes in antibody levels. Two variants of the model were used – one assuming a constant
178 rate of increasing antibody levels with age and one assuming differing antibody acquisition rates
179 between age groups (Supplementary Methods). Area Under the Antibody Acquisition Curve (AUC)
180 values were calculated based on the model fit for each village and survey month, representing
181 cumulative antibody levels across all ages.³¹ Within region AUCs were compared between the start
182 and end of transmission season as well as between regions at each time point. Strength of evidence
183 for observed differences are presented as p-values, derived from the posterior distributions of
184 predicted antibody levels over a specified age range.

185 **Dry season antibody levels and odds of infection post-MDA.** Individual antibody levels in April 2014
186 prior to MDA were assessed by comparing observed and expected MFI value as predicted by the
187 antibody acquisition fit for individuals in URR-South. For individuals with above average MFI values for
188 their age group, the difference between observed and expected logMFI was calculated and classified
189 to below or above median of residual MFI antibody response. Logistic regression was used to estimate
190 the odds of clinical malaria (passively detected via the health facility or study nurses in the community)
191 or asymptomatic *Pf* infection (actively detected using PCR from monthly survey samples) during the
192 transmission season following MDA (October – December 2014) amongst individuals below and above
193 median residual dry season antibody levels, compared to individuals at or below expected antibody
194 responses, allowing for clustering at the household/compound. Multivariate analyses also adjusted
195 for age, LLIN use, and MDA adherence using generalised linear mixed-effects models with the ‘glm’
196 and ‘glmer’ functions in the ‘lme4’ v1.1-21 package in R version 3.6.1.

197 **Results**

198 **Sero-prevalence in children by geographical region and transmission season.** Variation in sero-
199 prevalence between geographical region and transmission season differed by antigen. More
200 specifically, between July and December (start and end of the transmission season), seroprevalence
201 to Etramp5.Ag1 in children aged 1-15 years in the West Coast Region increased by 4-6% (95%CI 1.0 -
202 8.3) and by 2.9% (95%CI 0.0 - 5.8) for *Pf*MSP1₁₉ (Table 1, Figure 2, Supplementary Table 1). In the URR,
203 there was statistically strong evidence for increases in under-15 sero-prevalence between July and
204 December for all antigens (Supplementary Table 1). Mean sero-prevalence in the URR in December
205 2014, the transmission season after MDA, was lower for *Pf*MSP1₁₉, *Pf*AMA1, Etramp5.Ag1, Rh2.2030
206 and EBA175, compared to December 2013 before implementation of MDA, but results were not
207 statistically significant (Supplementary Table 1).

208 **Sero-conversion rate between geographical regions and transmission seasons.** Differences in SCR
209 between geographical region and transmission season varied by antigen (Figure 3, Supplementary

210 Table 2). In WCR, changes in antibody responses between transmission seasons were larger for
211 *PfMSP1₁₉* (0·0147 increase in SCR between July and December) compared to *PfAMA1* (0·0007 increase
212 in SCR). In URR, seasonal differences between July and December 2013 for both antigens were larger
213 than the WCR, with an increase in *PfMSP1₁₉* SCR of 0·0405 and increase of 0·0301 in *PfAMA1* SCR.
214 There was no significant change in SCR between December 2013 and April 2014 for either antigen.

215 At the start of the 2013 malaria transmission season (July), *PfMSP1₁₉* SCR in URR was twice as high
216 (SCR 0·0130, 95%CI 0·0088 – 0·0194) than in WCR (SCR 0·0067, 95%CI 0·0037 – 0·0123). After peak
217 transmission season, this difference was more pronounced, with *PfMSP1₁₉* SCR 0·0214 (95%CI 0·0087
218 – 0·0530) in WCR compared to SCR 0·0535 (95%CI 0·0344 – 0·0831) in URR. *PfAMA1* SCR in the URR
219 was consistently higher than the WCR throughout the transmission season, with SCR 0·0159 (95%CI
220 0·0080 – 0·0239) and 0·0614 (95%CI 0·0509 – 0·0740) for WCR and URR, respectively, in July, and SCR
221 0·0166 (95%CI 0·0124 – 0·0224) and 0·0915 (95%CI 0·0738 – 0·1135) in WCR and URR, respectively, in
222 December. Increases in sero-prevalence in older age groups are not pronounced for markers
223 associated with short-lived antibody responses, which is an underlying assumption when using sero-
224 catalytic models. Therefore, antibody acquisition models are used to assess age-adjusted changes in
225 antibody responses based on continuous data for markers of short-lived antibody responses.

226 ***Age-adjusted antibody acquisition by geographical region and transmission season.*** For antigens
227 associated with long-lived antibody responses (*PfMSP1₁₉* and *PfAMA1*), differences in age-adjusted
228 antibody acquisition were observed between WCR and URR at the end of the 2013 transmission
229 season (December) (Figure 5, Supplementary Tables 8-9). For *PfMSP1₁₉*, differences in geometric mean
230 antibody levels in children aged 1-15 years in URR were higher at the end of the transmission season
231 compared to the start of the season ($p=0\cdot03$). Additionally, higher antibody levels to *PfAMA1* in 1-15
232 year olds were observed in URR compared to WCR at the end of the transmission season ($p<0\cdot001$).
233 No significant differences in antibody levels for *PfAMA1* were observed between the start and end of
234 transmission season in URR.

235 In contrast to *PfMSP1₁₉* and *PfAMA1*, all serological markers associated with shorter-lived antibody
236 responses (Etramp5.Ag1, GEXP18, HSP.Ag1, EBA175, and Rh2.2030) showed higher antibody levels in
237 1-15 year olds in URR compared to WCR at the end of the transmission season (Figure 4,
238 Supplementary Tables 3-7). In URR, antibody responses to Etramp5.Ag1 increased between the start
239 and end of the transmission season amongst individuals 1-15 years ($p=0.001$). However, antibody
240 levels in 1-15 year olds for HSP40.Ag1 decreased between the start and end of the transmission season
241 in WCR ($p=0.004$). At the start of the transmission season, antibody levels to GEXP18 were higher in
242 URR compared to WCR ($p=0.03$). There were no within-region differences in antibody responses to
243 any of the antigens tested between the 2013 transmission season and the following dry season (April
244 2014).

245 ***Association between pre-MDA antibody levels and post-MDA malaria infection.***

246 Decreases in under-15 sero-prevalence between pre- and post-MDA transmission seasons (December
247 2013 vs. December 2014) were only observed for GEXP18 (diff-3.4% 95%CI -9.2, 2.4) and HSP40.Ag1
248 (diff-2.1% 95%CI -7.0, 2.9), but differences were not statistically significant. After adjusting for age,
249 LLIN use in the last 24 hours, and MDA compliance, individuals in the upper 50th percentile of above-
250 average antibody levels to Etramp5.Ag1 for their age group in the dry season (April 2014, before the
251 implementation of MDA) had two-fold higher odds of clinical malaria (aOR 1.91 95%CI 1.05 - 3.52,
252 $p=0.04$) in the 2014 transmission season (October – December) after MDA (Figure 6A, Supplementary
253 Table 10). Dry season antibody levels to Rh2.2030 were also moderately associated with increased
254 odds of clinical malaria (OR 1.75 95%CI 0.93 - 3.30, $p=0.09$) after MDA (Figure 6A, Supplementary Table
255 14), but statistical evidence was not strong. Similarly, there was a borderline association between
256 above average antibody levels to *PfAMA1* in the dry season and increased odds of clinical malaria (OR
257 1.70 95%CI 0.97 - 2.98, $p=0.07$), but statistical association was weak after adjusting for age, LLIN use
258 and MDA compliancy (Figures 6A, Supplementary Table 16). Antibody responses to all other antigens

259 investigated were not associated with increased odds of infection post-MDA (Supplementary Tables
260 11-15).

261 **Discussion**

262 In this study, spatio-temporal variations in serological responses were observed for several *Pf*
263 antigens, likely reflecting changes in malaria incidence as well as residual antibodies from prior
264 infection. In moderate to high transmission settings, higher antibody levels in the dry season due to
265 prior exposure are common. However, the rate at which protective antibodies develop varies by
266 setting. Immunity to clinical malaria has been observed in children as young as 5 years^{32,33}, while in
267 other transmission ranges, immunity may only develop after 10 to 15 years of exposure.^{34,35} Children
268 can be a useful sentinel population for monitoring transmission, but the optimal age range for
269 surveillance depends on the historical patterns of transmission governing population antibody
270 responses. Most indicators and survey designs are associated with some bias affecting the accuracy
271 of estimates. School surveys in South East Asia, where the distribution of malaria may be skewed
272 towards older age groups, may better reflect sero-incidence due to less childhood exposure compared
273 to sub-Saharan Africa. Serological surveillance protocols can therefore be combined with other
274 routine metrics to overcome potential sampling biases.

275 Differences in sero-conversion rates to *Pf*MSP1₁₉ and *Pf*AMA1 were observed between geographical
276 regions but not between transmission seasons. Long-lived antibody responses typically reflect past
277 exposure rather than incidence during a single transmission season. However, these markers have
278 been shown to be sensitive to changes in transmission over longer periods of time in The Gambia.³⁶
279 Antibody acquisition models can detect more subtle differences in the magnitude of antibody levels.
280 Five sero-incidence markers evaluated in this study - Etramp5.Ag1, GEXP18, HSP40.Ag1, EBA175, and
281 Rh2.2030 - detected geographical differences in antibody acquisition. Additionally, Etramp5.Ag1 and
282 HSP40.Ag1 detected seasonal differences in high and low transmission settings. These findings align
283 with previous microarray studies, where Etramp5.Ag1, GEXP18, HSP40 were amongst the top 10

284 serological markers out of 856 *Pf* antigens screened found to be most associated with recent episodes
285 of clinical malaria in Uganda and Mali²¹.

286 Between December 2013 and April 2014, antibody levels did not decline significantly, indicating that
287 antibody decay probably occurs over a period longer than four months. This may be due to persistent
288 asymptomatic parasitaemia or infections occurring late in the transmission season. In The Gambia,
289 antibody decay in children has been observed for several antigens associated with protective
290 immunity (*Pf*AAMA1, *Pf*MSP2, *Pf*MSP1, EBA175), with antibody half-life estimated between 10 to 50
291 days^{37,38} and long-lived antibody secreting cells persisting for up to four years³⁸. However, antibody
292 half-lives vary between settings, ranging from 10-20 days in Kenya³⁹ and Ghana³⁸, 98 to 120 days in
293 Nigeria for EBA175 and Rh4.2⁴⁰, and up to 225 days in Cambodia⁴¹ and 7 years in Thailand⁴² for
294 *Pf*MSP1₁₉. However, these studies focus on a limited number of antigens. Estimates of antibody
295 longevity for a larger range of antigens can help inform optimal sampling strategies for future
296 serological surveillance using multiplex assay platforms. Studies in Mali have quantified antibody
297 responses to over 2,000 *Pf* antigens on protein microarray, observing rapid declines in antibody levels
298 within six months.⁴³

299 Above average antibody levels in the dry season before MDA was associated with increased odds of
300 clinical malaria following MDA. Associations were moderate for Rh2.2030 and *Pf*AAMA1, but individuals
301 with higher than average antibody levels against Etramp5.Ag1 had a two-fold higher odds of clinical
302 malaria post-MDA. It is possible that serology can identify individuals who are infected during the dry
303 season or experience a high frequency of exposure, leading to increased risk of clinical illness, despite
304 remaining below the detection limit of other diagnostics. Similar associations were observed using
305 parasitological endpoints, where individuals with *Pf* infection as measured by PCR in the dry season
306 had increased odds of infection post MDA.²² This study was not designed to assess the effectiveness
307 of MDA using serological endpoints, and sample size may not be powered to draw strong conclusions.
308 Analysis of a larger set of antigens or grouping antibody data based on antigen expression or function

309 during the parasite life cycle may help delineate the wide range of responses with respect to malaria
310 exposure, incidence, or immunity. Studies measuring persistent asymptomatic parasitaemia
311 throughout the dry and wet seasons could further elucidate the dynamics between parasite density,
312 immunity, and serological responses.

313 This study demonstrates that a diverse panel of serological markers can be used to monitor malaria
314 exposure (observed through long-lived antibody responses) and incidence (through shorter-lived
315 antibody responses). Microarray studies evaluating the combined use of multiple serological markers
316 suggest that panels of at least five antigens confer greater diagnostic accuracy compared to a single
317 marker, while panels of more than 20 have only incremental improvements in accuracy^{21,44}. Between-
318 antigen variation in antibody detection will also exist naturally; differences in the immunogenicity of
319 recombinant antigen constructs could be due to sequence selection or expression systems, or the
320 choice of antigen isotypes or IgG subclasses. Multi-marker diagnostic panels may be better able to
321 capture the breadth of antibody responses in the population. This lends strong support for the
322 combined use of *Pf* antigens identified in this study in future diagnostic platforms. Evaluating their
323 accuracy in future intervention trials and surveillance studies, particularly cluster randomised trials,
324 can help establish standardised serological protocols usable across a variety of epidemiological
325 settings.

326 **List of abbreviations**

327 aOR: Adjusted odds ratio
328 AUC: Area Under the Antibody Acquisition Curve
329 CI: Confidence interval
330 DBS: Dried blood spot
331 DHA-PQ: Dihydroartemisinin-piperaquine
332 EBA175: Erythrocyte binding antigen 175 RIII-V
333 Etramp5.Ag1: Early transcribed membrane protein 5
334 GEE: Generalised estimating equations

335 GEXP18: Gametocyte export protein 18 (GEXP18)
336 HSP40.Ag1: Heat shock protein 40
337 IgG: Immunoglobulin
338 LLIN: Long-lasting insecticide treated net
339 MDA: Mass drug administration (MDA)
340 MFI: Median fluorescence intensity
341 PCD: Passive case detection
342 PCR: Polymerase chain reaction
343 *Pf, P.falciparum: Plasmodium falciparum*
344 *PfAMA1: P.falciparum* apical membrane antigen 1
345 *PfMSP1₁₉: P.falciparum* merozoite surface antigen 1 19-kDa carboxy-terminal region
346 RDT: Rapid diagnostic test
347 Rh2.2030: Reticulocyte binding protein homologue 2
348 SCR: Sero-conversion rate
349 URR: Upper River Region, The Gambia
350 WCR: West Coast Region, The Gambia

351

352 **Declaration of interests**

353 **Ethics approval and consent to participate**

354 This study was approved by the Gambia Government/MRC Joint Ethics Committee (SCC1318). Verbal
355 consent was first obtained at village sensitisation meetings, followed by individual written informed
356 consent for all participants. Parents/guardians provided written consent for children less than
357 17 years, and assent was obtained from children between 12 and 17 years.

358 **Availability of data and materials**

359 The datasets used and/or analysed during the current study are available from the corresponding
360 author on reasonable request.

361 **Competing interests**

362 All authors declare no competing interests.

363 **Funding**

364 This study was funded by the UK Medical Research Council (UKMRC) through the LSHTM Doctoral
365 Training Programme studentship received by LW. The funders had no role in the design of the study,
366 collection, analysis, interpretation of data or writing of the manuscript.

367 **Author contributions**

368 LW designed and coordinated the study, supervised and performed serological lab work, analysed the
369 data, and wrote the manuscript. JM and MA supervised field data collection and laboratory work. SC
370 and MB conducted the serological assays. KKAT and JB produced the antigens. KKAT and TH developed
371 the serological assay. JM, MA, UD, IK, and CD advised on study design, interpretation of findings, and
372 reviewed the manuscript. All authors read and approved the final manuscript.

373 **References**

- 374 1. WHO Global Malaria Programme. *Malaria surveillance, monitoring & evaluation: a reference*
375 *manual*. (World Health Organization, 2018).
- 376 2. Oesterholt, M. J. A. M. *et al.* Spatial and temporal variation in malaria transmission in a low
377 endemicity area in northern Tanzania. *Malar. J.* **5**, 98 (2006).
- 378 3. Clark, T. D. *et al.* Factors determining the heterogeneity of malaria incidence in children in
379 Kampala, Uganda. *J. Infect. Dis.* **198**, 393–400 (2008).
- 380 4. Bousema, T. *et al.* Identification of hot spots of malaria transmission for targeted malaria
381 control. *J. Infect. Dis.* **201**, 1764–74 (2010).
- 382 5. Bousema, T. *et al.* Hitting hotspots: spatial targeting of malaria for control and elimination.
383 *PLoS Med.* **9**, e1001165 (2012).
- 384 6. Woolhouse, M. E. J. *et al.* Heterogeneities in the transmission of infectious agents:
385 Implications for the design of control programs. *Proc. Natl. Acad. Sci.* **94**, 338–342 (1997).
- 386 7. Bousema, T. *et al.* The impact of hotspot-targeted interventions on malaria transmission:
387 study protocol for a cluster-randomized controlled trial. *Trials* **14**, 36 (2013).
- 388 8. Hayes, R. & Moulton, L. *Cluster Randomised Trials*. (Chapman & Hall/CRC Press, 2009).
- 389 9. Bautista, C. T. *et al.* Epidemiology and spatial analysis of malaria in the northern Peruvian
390 Amazon. *Am J Trop Med Hyg* **75**, 1216–1222 (2006).
- 391 10. Ernst, K. C., Adoka, S. O., Kowuor, D. O., Wilson, M. L. & John, C. C. Malaria hotspot areas in a
392 highland Kenya site are consistent in epidemic and non-epidemic years and are associated
393 with ecological factors. *Malar. J.* **5**, 78 (2006).
- 394 11. Gaudart, J. *et al.* Space-time clustering of childhood malaria at the household level: a dynamic
395 cohort in a Mali village. *BMC Public Health* **6**, 286 (2006).
- 396 12. WHO Global Malaria Programme. *A framework for malaria elimination*. (World Health
397 Organization, 2017).
- 398 13. Noor, A. M. *et al.* The changing risk of Plasmodium falciparum malaria infection in Africa:

- 399 2000–10: a spatial and temporal analysis of transmission intensity. *Lancet* **383**, 1739–1747
400 (2014).
- 401 14. Thomas, C. J. & Lindsay, S. W. Local-scale variation in malaria infection amongst rural
402 Gambian children estimated by satellite remote sensing. *Trans. R. Soc. Trop. Med. Hyg.* **94**,
403 159–63
- 404 15. D’Alessandro, U. *et al.* Mortality and morbidity from malaria in Gambian children after
405 introduction of an impregnated bednet programme. *Lancet* **345**, 479–483 (1995).
- 406 16. Snow, R. W., Rowan, K. M., Lindsay, S. W. & Greenwood, B. M. A trial of bed nets (mosquito
407 nets) as a malaria control strategy in a rural area of The Gambia, West Africa. *Trans. R. Soc.*
408 *Trop. Med. Hyg.* **82**, 212–5 (1988).
- 409 17. Alonso, P. L. *et al.* A malaria control trial using insecticide-treated bed nets and targeted
410 chemoprophylaxis in a rural area of The Gambia, West Africa: 6. The impact of the
411 interventions on mortality and morbidity from malaria. *Trans. R. Soc. Trop. Med. Hyg.* **87**, 37–
412 44 (1993).
- 413 18. Mwesigwa, J. *et al.* On-going malaria transmission in The Gambia despite high coverage of
414 control interventions: a nationwide cross-sectional survey. *Malar. J.* **14**, 314 (2015).
- 415 19. Mwesigwa, J. *et al.* Residual malaria transmission dynamics varies across The Gambia despite
416 high coverage of control interventions. *PLoS One* **12**, e0187059 (2017).
- 417 20. Okebe, J. *et al.* School-Based Countrywide Seroprevalence Survey Reveals Spatial
418 Heterogeneity in Malaria Transmission in the Gambia. *PLoS One* **9**, e110926 (2014).
- 419 21. Helb, D. A. *et al.* Novel serologic biomarkers provide accurate estimates of recent
420 Plasmodium falciparum exposure for individuals and communities. *Proc. Natl. Acad. Sci. U. S.*
421 *A.* **112**, E4438-47 (2015).
- 422 22. Mwesigwa, J. *et al.* Mass Drug Administration With Dihydroartemisinin-piperaquine and
423 Malaria Transmission Dynamics in The Gambia: A Prospective Cohort Study. *Clin. Infect. Dis.*
424 **69**, 278–286 (2019).

- 425 23. Wu, L. *et al.* Optimisation and standardisation of a multiplex immunoassay of diverse
426 Plasmodium falciparum antigens to assess changes in malaria transmission using sero-
427 epidemiology. *Wellcome Open Res.* **4**, 26 (2019).
- 428 24. Snounou, G. Genotyping of Plasmodium spp. Nested PCR. *Methods Mol. Med.* **72**, 103–116
429 (2002).
- 430 25. Wu, L. *et al.* Optimisation and standardisation of a multiplex immunoassay of diverse
431 Plasmodium falciparum antigens to assess changes in malaria transmission using sero-
432 epidemiology. *Wellcome Open Res.* **4**, 26 (2019).
- 433 26. Stewart, L. *et al.* Rapid assessment of malaria transmission using age-specific sero-conversion
434 rates. *PLoS One* **4**, e6083 (2009).
- 435 27. Drakeley, C. J. *et al.* Estimating medium- and long-term trends in malaria transmission by
436 using serological markers of malaria exposure. *Proc. Natl. Acad. Sci. U. S. A.* **102**, 5108–13
437 (2005).
- 438 28. Stevenson, J. C. *et al.* Reliability of School Surveys in Estimating Geographic Variation in
439 Malaria Transmission in the Western Kenyan Highlands. *PLoS One* **8**, e77641 (2013).
- 440 29. Weber, G. E. *et al.* Sero-catalytic and Antibody Acquisition Models to Estimate Differing
441 Malaria Transmission Intensities in Western Kenya. *Sci. Rep.* **7**, (2017).
- 442 30. Yman, V. *et al.* Antibody acquisition models: A new tool for serological surveillance of malaria
443 transmission intensity. *Sci. Rep.* **6**, 19472 (2016).
- 444 31. Arnold, B. F. *et al.* Measuring changes in transmission of neglected tropical diseases, malaria,
445 and enteric pathogens from quantitative antibody levels. *PLoS Negl. Trop. Dis.* **11**, e0005616
446 (2017).
- 447 32. Staniscic, D. I. *et al.* Acquisition of antibodies against Plasmodium falciparum merozoites and
448 malaria immunity in young children and the influence of age, force of infection, and
449 magnitude of response. *Infect. Immun.* **83**, 646–60 (2015).
- 450 33. Osier, F. H. A. *et al.* Breadth and Magnitude of Antibody Responses to Multiple Plasmodium

- 451 falciparum Merozoite Antigens Are Associated with Protection from Clinical Malaria. *Infect.*
452 *Immun.* **76**, 2240–2248 (2008).
- 453 34. Carneiro, I. *et al.* Age-Patterns of Malaria Vary with Severity, Transmission Intensity and
454 Seasonality in Sub-Saharan Africa: A Systematic Review and Pooled Analysis. *PLoS One* **5**,
455 e8988 (2010).
- 456 35. Griffin, J. T., Ferguson, N. M. & Ghani, A. C. Estimates of the changing age-burden of
457 Plasmodium falciparum malaria disease in sub-Saharan Africa. *Nat. Commun.* **5**, 3136 (2014).
- 458 36. van den Hoogen, L. L. *et al.* Serology describes a profile of declining malaria transmission in
459 Farafenni, The Gambia. *Malar. J.* **14**, 416 (2015).
- 460 37. Akpogheneta, O. J. *et al.* Duration of Naturally Acquired Antibody Responses to Blood-Stage
461 Plasmodium falciparum Is Age Dependent and Antigen Specific. *Infect. Immun.* **76**, 1748–1755
462 (2008).
- 463 38. White, M. T. *et al.* Dynamics of the Antibody Response to Plasmodium falciparum Infection in
464 African Children. *J. Infect. Dis.* **210**, 1115–1122 (2014).
- 465 39. Kinyanjui, S. M., Conway, D. J., Lanar, D. E. & Marsh, K. IgG antibody responses to
466 Plasmodium falciparum merozoite antigens in Kenyan children have a short half-life. *Malar. J.*
467 **6**, 82 (2007).
- 468 40. Ahmed Ismail, H. *et al.* Subclass responses and their half-lives for antibodies against EBA175
469 and Pfrh2 in naturally acquired immunity against Plasmodium falciparum malaria. *Malar. J.*
470 **13**, 425 (2014).
- 471 41. Kerkhof, K. *et al.* Serological markers to measure recent changes in malaria at population
472 level in Cambodia. *Malar. J.* **15**, 529 (2016).
- 473 42. Wipasa, J. *et al.* Long-Lived Antibody and B Cell Memory Responses to the Human Malaria
474 Parasites, Plasmodium falciparum and Plasmodium vivax. *PLoS Pathog.* **6**, e1000770 (2010).
- 475 43. Crompton, P. D. *et al.* A prospective analysis of the Ab response to Plasmodium falciparum
476 before and after a malaria season by protein microarray. *Proc. Natl. Acad. Sci. U. S. A.* **107**,

477 6958–63 (2010).

478 44. Longley, R. J. *et al.* Development and validation of serological markers for detecting recent

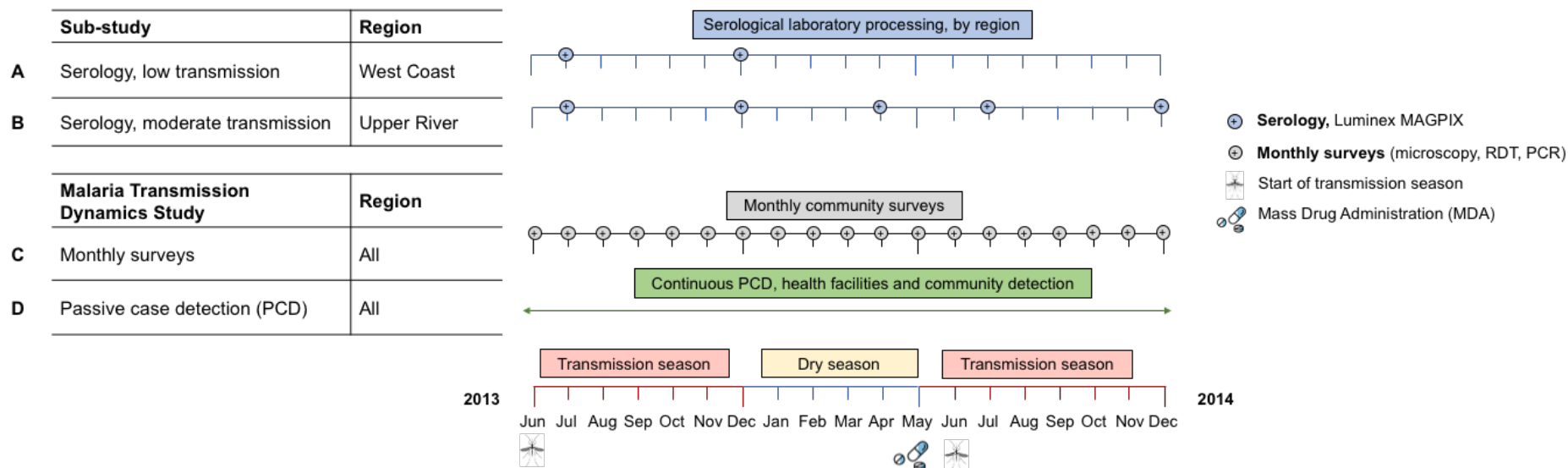
479 Plasmodium vivax infection. *Nat. Med.* **26**, 741–749 (2020).

480

481

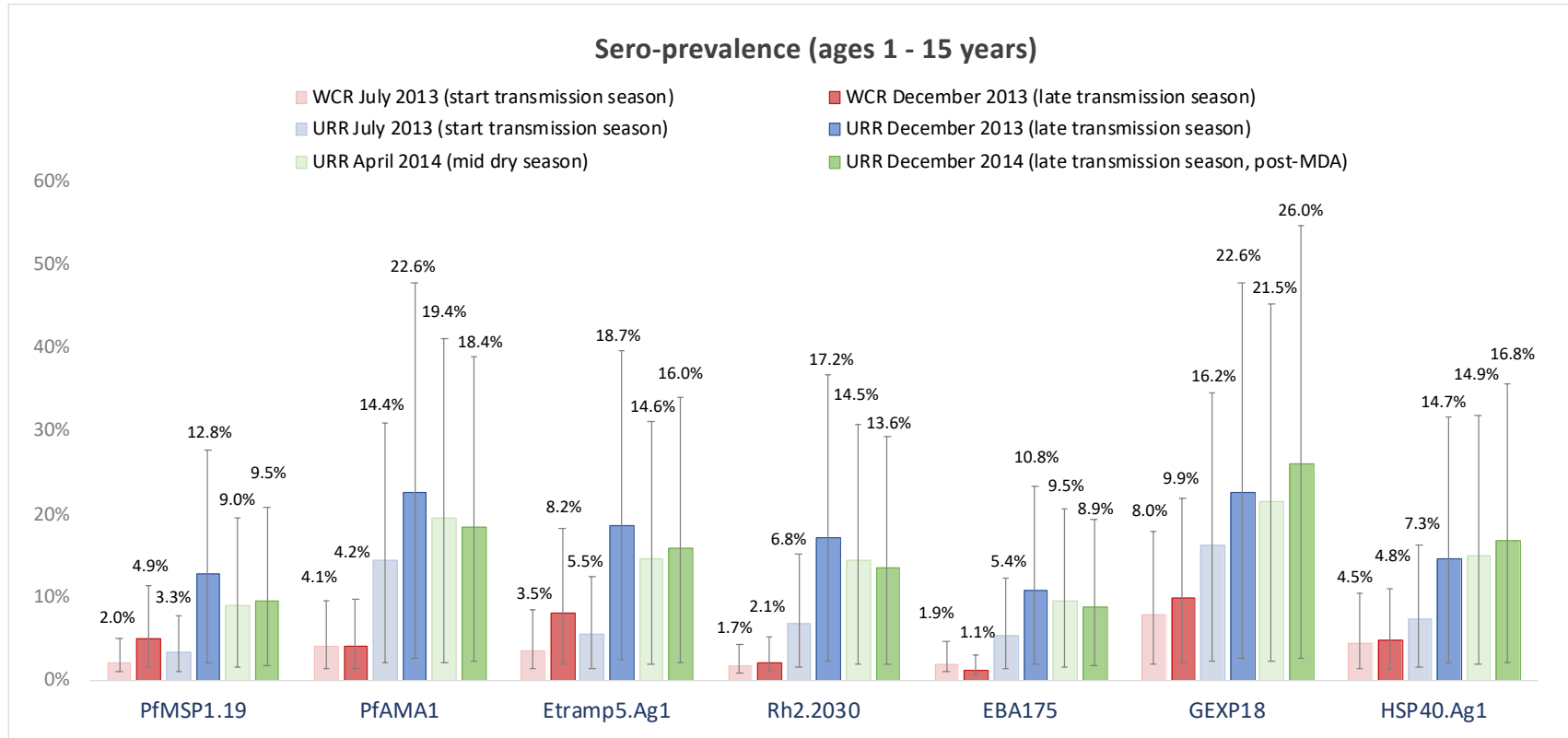
482

483 **Figure 1. Study timelines.** Malaria Transmission Dynamics Study timeline shown in black and green. Serological study timeline shown in blue for West Coast and Upper River
 484 Regions (low and moderate transmission settings, respectively). Samples for serological analysis were processed on the Luminex MAGPIX, samples from monthly surveys
 485 were analysed using microscopy, rapid diagnostic tests (RDTs) and polymerase chain reaction (PCR). As part of the Malaria Transmission Dynamics Study, one round of mass
 486 drug administration (MDA) was administered from May – June in both 2014 and 2015 (2015 not shown as no samples from this year were used for serological analysis).
 487 Transmission season is approximately June - December each year.



488
 489
 490
 491
 492
 493
 494

495 **Figure 2. Sero-prevalence in children ages 1-15 years by antigen, geographical region, and transmission season.** Mean sero-prevalence estimates are shown for the West
 496 Coast Region (WCR) for July 2013 (light red) and December 2013 (dark red), and the Upper River Region (URR) for July 2013 (light blue), December 2013 (dark blue), April
 497 2014 (light green), and December 2014 (dark green). 95% confidence intervals are indicated by the vertical bars.



498

499

500

501

502

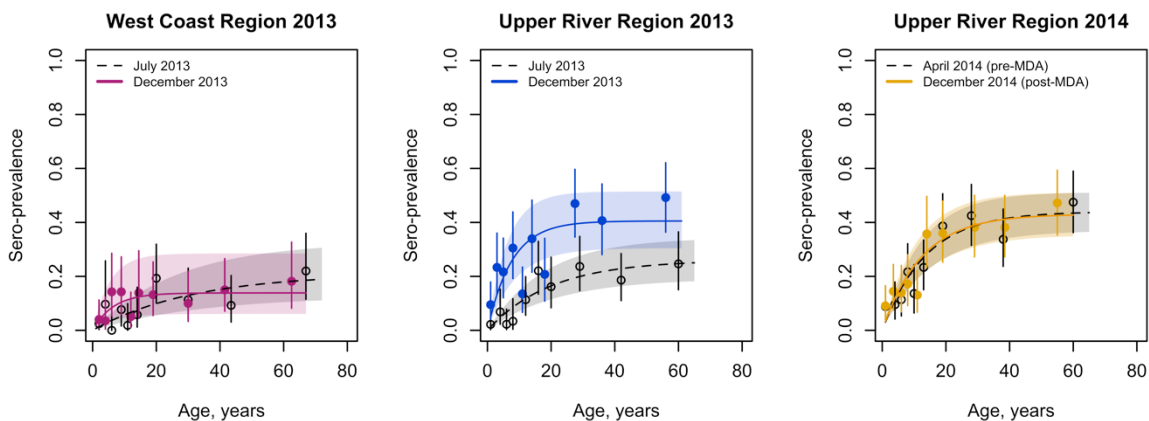
503 **Table 2. Sero-prevalence in children aged 1-15 years by antigen, geographical region, and transmission season.** Mean sero-prevalence estimates are shown for the West
 504 Coast Region (WCR) for July 2013 and December 2013, and the Upper River Region (URR) for July 2013, December 2013, April 2014, and December 2014. Mean and 95%
 505 confidence intervals (parentheses) are shown as percentages.

	<i>PfMSP1₁₉</i>	<i>PfAMA1</i>	<i>Etramp5.Ag1</i>	<i>Rh2.2030</i>	<i>EBA175</i>	<i>GEXP18</i>	<i>HSP40.Ag1</i>
West Coast Region							
July 2013 (n=314)	2.0% (1.0 - 3.1)	4.1% (2.7 - 5.5)	3.5% (2.2 - 4.9)	1.7% (0.8 - 2.6)	1.9% (0.9 - 2.8)	8.0% (6.1 - 9.9)	4.5% (3.0 - 5.9)
Dec 2013 (n=317)	4.9% (3.4 - 6.4)	4.2% (2.8 - 5.6)	8.2% (6.3 - 10.1)	2.1% (1.1 - 3.1)	1.1% (0.4 - 1.9)	9.9% (7.8 - 12.0)	4.8% (3.3 - 6.2)
Upper River Region							
July 2013 (n=437)	3.3% (2.2 - 4.5)	14.4% (12.2 - 16.6)	5.5% (4.1 - 6.9)	6.8% (5.2 - 8.4)	5.4% (4.0 - 6.8)	16.2% (13.9 - 18.5)	7.3% (5.7 - 8.9)
Dec 2013 (n=390)	12.8% (10.8 - 14.9)	22.6% (20.1 - 25.2)	18.7% (16.3 - 21.1)	17.2% (14.9 - 19.6)	10.8% (8.9 - 12.7)	22.6% (20.1 - 25.2)	14.7% (12.5 - 16.9)
Apr 2014 (n=504)	9.0% (7.4 - 10.5)	19.4% (17.3 - 21.6)	14.6% (12.7 - 16.5)	14.5% (12.5 - 16.4)	9.5% (7.9 - 11.1)	21.5% (19.3 - 23.7)	14.9% (13.0 - 16.9)
Dec 2014 (n=449)	9.5% (7.8 - 11.2)	18.4% (16.1 - 20.6)	16.0% (13.8 - 18.1)	13.6% (11.6 - 15.6)	8.9% (7.2 - 10.5)	26.0% (23.4 - 28.6)	16.8% (14.6 - 19.0)

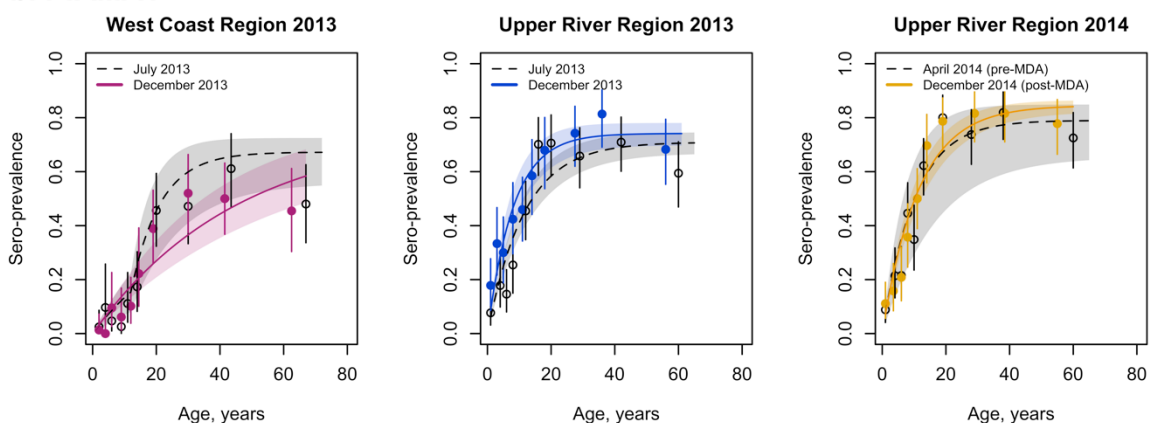
506

507 **Figure 3. *PfMSP1.19* and *PfAMA1* sero-conversion rates by transmission season and geographical region.**
508 Mean and 95% confidence intervals of sero-prevalence for each age group are shown as circles and vertical lines,
509 respectively. Mean fit of the reverse catalytic model is shown as a solid line for the end of the transmission
510 season (December 2013 and 2014) and dotted line for the dry season (April 2014) or start of the transmission
511 season (July 2013). Shaded regions are the 95% credible interval of the model fit.

a. *PfMSP1.19*



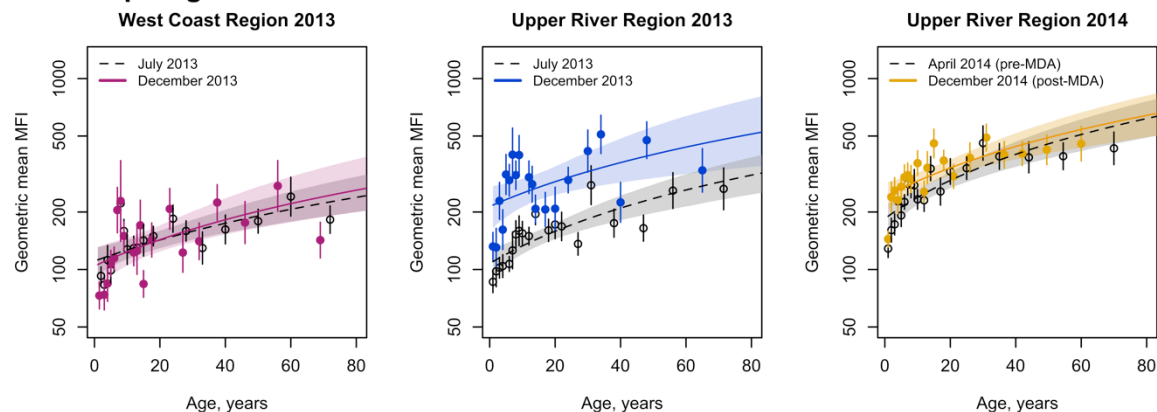
b. *PfAMA1*



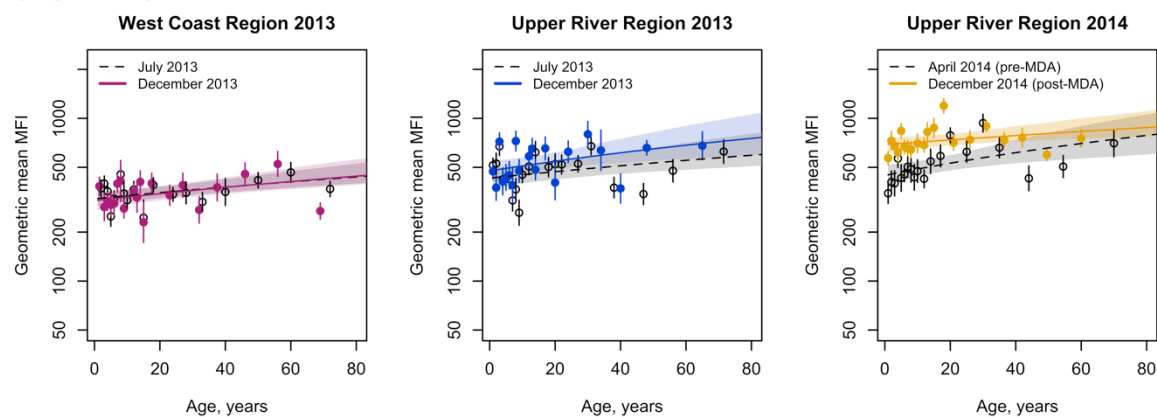
512
513
514
515
516
517
518
519
520
521
522
523
524
525

526 **Figure 4. Age-dependent antibody acquisition for Etramp5.Ag1, GEXP18 and HSP40.Ag1 by geographical**
527 **region and transmission season.** Mean and 95% confidence intervals of geometric mean antibody levels for
528 each age group are shown as circles and vertical lines, respectively. Median fit of the antibody acquisition model
529 is shown as a solid line for the end of the transmission season (December 2013 and 2014) and dotted line for the
530 dry season (April 2014) or start of the transmission season (July 2013). Shaded regions are the 95% credible
531 intervals of the model fit.

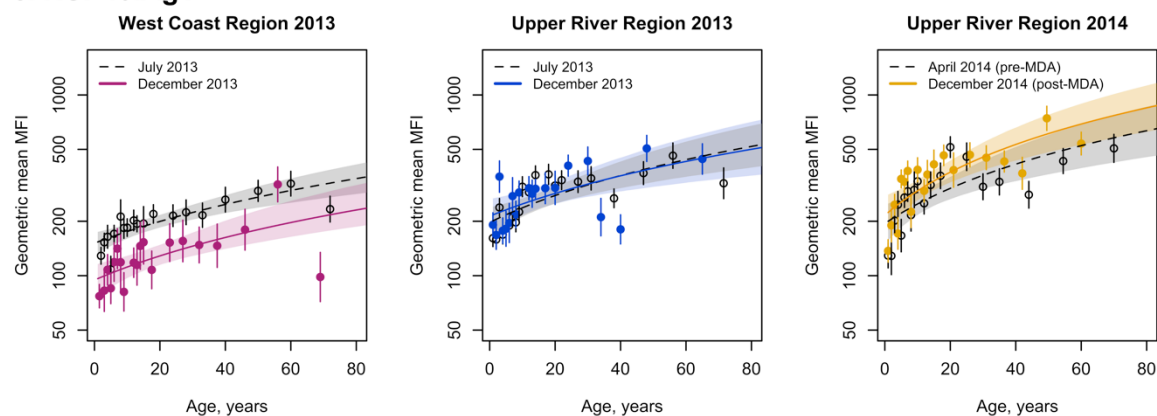
a. Etramp5.Ag1



b. GEXP18



c. HSP40.Ag1



532

533

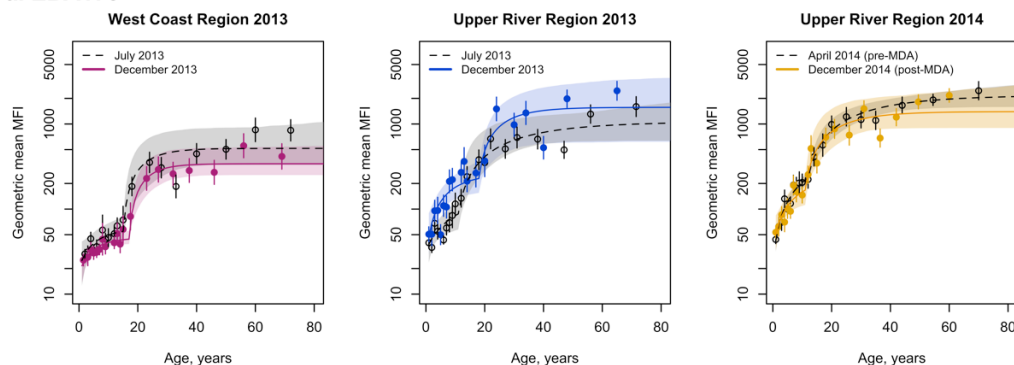
534

535

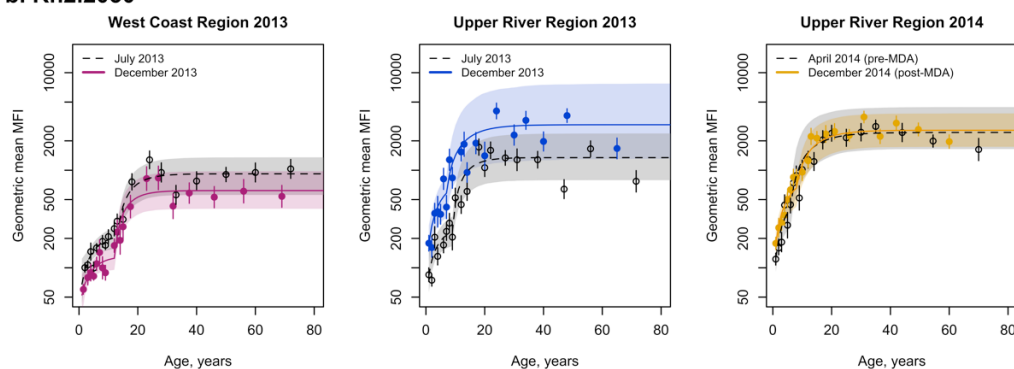
536

537 **Figure 5. Age-dependent antibody acquisition for EBA175, Rh2.2030, PfMSP1.19 and PfAMA1 by geographical**
 538 **region and transmission season.** Mean and 95% confidence intervals of geometric mean antibody levels for
 539 each age group are shown as circles and vertical lines, respectively. Median fit of the antibody acquisition model
 540 is shown as a solid line for the end of the transmission season (December 2013 and 2014) and dotted line for
 541 the dry season (April 2014) or start of the transmission season (July 2013). Shaded regions are the 95% credible
 542 intervals of the model fit.

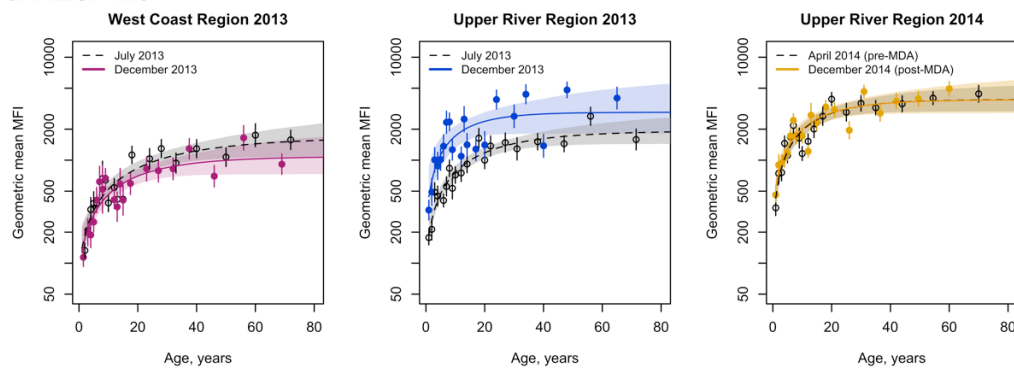
a. EBA175



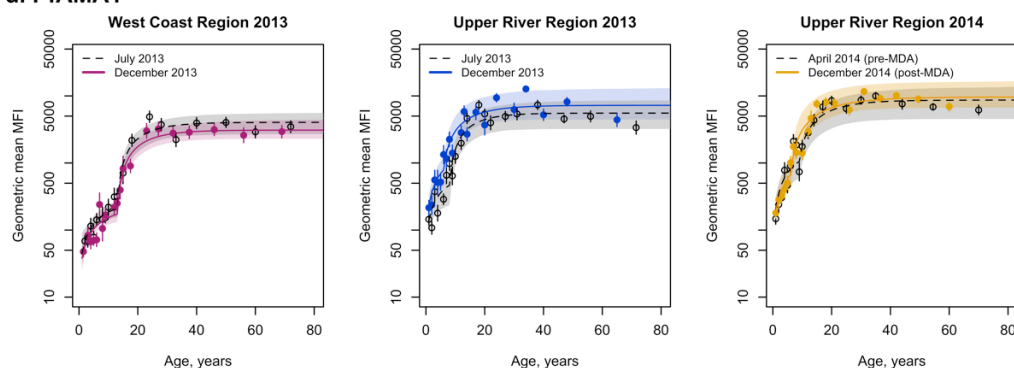
b. Rh2.2030



c. PfMSP1.19

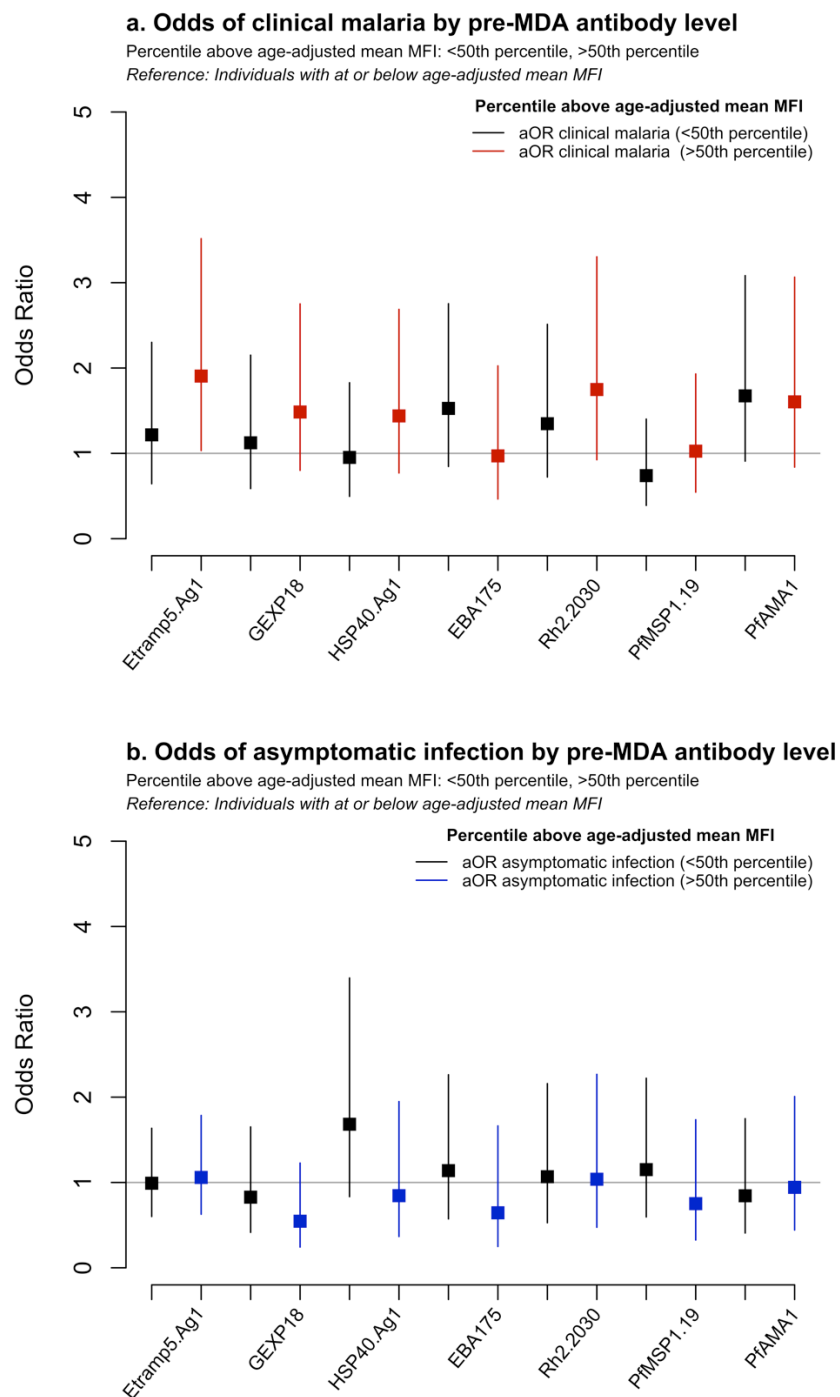


d. PfAMA1



543

544 **Figure 6. Association of pre-MDA dry season (April 2014) antibody levels and odds of (a) clinical malaria or (b)**
 545 **asymptomatic infection, during transmission season post-MDA (December 2014).** Odds ratios are adjusted for
 546 age, LLIN use and MDA compliancy. Clinical malaria is defined as clinical or RDT confirmed case, asymptomatic
 547 infection is defined as PCR-positive and clinically or RDT-negative.



548