

## **Associations of clinical characteristics and antiviral drugs with viral RNA clearance in patients with COVID-19 in Guangzhou, China: a retrospective cohort study**

Xudan Chen<sup>1#</sup>, Yuying Zhang<sup>2#</sup>, Baoyi Zhu<sup>2#</sup>, Jianwen Zeng<sup>2</sup>, Wenxin Hong<sup>1</sup>, Xi He<sup>1</sup>,  
Jingfeng Chen<sup>1</sup>, Haipeng Zheng<sup>1</sup>, Shuang Qiu<sup>1</sup>, Ying Deng<sup>3</sup>, Juliana CN Chan<sup>4</sup>, Jian Wang<sup>1\*</sup>

1. Department of Infectious Disease, Guangzhou Eighth People's Hospital, Guangzhou Medical University, Guangzhou 510060, China
2. Department of Urology, the Sixth Affiliated Hospital of Guangzhou Medical University, Guangdong, China
3. Department of Infectious Disease, the Sixth Affiliated Hospital of Guangzhou Medical University, Guangdong, China
3. Department of Medicine and Therapeutics, Hong Kong Institute of Diabetes and Obesity and Li Ka Shing Institute of Health Science, The Chinese University of Hong Kong, Prince of Wales Hospital, Shatin, Hong Kong SAR, China

#equal contribution

Correspondence\*:

Dr. Jian Wang, Department of Infectious Disease, Guangzhou Eighth People's Hospital, Guangzhou Medical University, Guangzhou 510060, China

Email: [gz8hwj@126.com](mailto:gz8hwj@126.com)

Tel: +86-20-83710422

### **Brief Summary**

Viral RNA was cleared in 89% of the COVID-19 patients within 21 days after illness onset.

The use of antiviral drugs (chloroquine, oseltamivir, arbidol, and lopinavir/ritonavir) did not shorten viral RNA clearance, especially in non-serious cases.

## **Abstract**

**Background:** The novel coronavirus disease 2019 (COVID-19) characterized by respiratory symptoms has become a global pandemic although factors influencing viral RNA clearance remained unclear to inform optimal isolation period and treatment strategies.

**Methods:** In this retrospective study, we included patients with confirmed COVID-19 admitted to Guangzhou Eighth People's Hospital from 20<sup>th</sup> January 2020 to 15<sup>th</sup> March 2020. The associations of clinical characteristics and treatment regimens on time to viral RNA clearance were analyzed.

**Results:** We examined 284 consecutive COVID-19 cases, accounting for 82% of confirmed cases in Guangzhou during this period. At the time of reporting (20<sup>th</sup> March 2020), 276 (97.2%) had recovered and were discharged from hospital with a median hospital stay of 18 days (interquartile range [IQR]:13-24). Overall, 280 patients achieved viral RNA clearance with a median length of 12 days (IQR: 8-16) after onset of illness. Amongst them, 66.1% had viral RNA cleared within 14 days, and 89.3% within 21 days. Older age, severity of disease, time lag from illness onset to hospital admission, high body temperature, and corticosteroid use were associated with delayed clearance of viral RNA. None of the antiviral regimens (chloroquine, oseltamivir, arbidol, and lopinavir/ritonavir) improved viral RNA clearance. The use of lopinavir/ritonavir was associated with delayed clearance of viral RNA after adjusting for confounders.

**Conclusion:** In patients with COVID-19, isolation for a minimum of 21 days after onset of illness may be warranted, while the use of antiviral drugs does not enhance viral RNA clearance.

**Key words:** COVID-19; viral RNA clearance; isolation period; antiviral drug

## **Introduction**

From the end of 2019, a new type of pneumonia caused by a novel coronavirus (severe acute respiratory syndrome coronavirus 2, SARS-CoV-2, also known as COVID-19), first broke out in Wuhan, spread rapidly throughout China, and became a global pandemic [1-4]. It has infected more than 1200,000 people worldwide and caused more than 67,000 deaths [5], posing enormous challenges to global public health.

To date, several epidemiological studies have reported the clinical characteristics of COVID-19 [1-3, 6-9]. Most of these studies with large sample size came from Wuhan, the center of the outbreak where sudden surge in demands for medical care has influenced timely treatment resulting in serious illness. Studies on COVID-19 patients in low incidence areas may provide additional insights into the clinical course of these patients.

The viral RNA dose determines a patient's infectivity and is a key criterion in determining period of isolation and time of discharge from hospital [10-12]. There are no antiviral drugs specifically targeting COVID-19. The use of antiviral drugs approved for other conditions is largely empirical in these patients. Some antiviral drugs, such as chloroquine, arbidol, and lopinavir/ritonavir, have been investigated in small-scale studies and are recommended as options of antiviral regimens in China and some countries [11, 13-17]. However, the efficacy of these antiviral drugs on the SARS-CoV-2 RNA clearance remains largely unknown.

Guangzhou is a densely-populated metropolitan city in Southern China. In 2003, Guangzhou was heavily hit by SARS and the lessons learned from SARS have provided some experiences for the management of COVID-19. From 20<sup>th</sup> January 2020 to 15<sup>th</sup> March 2020, 347 patients were confirmed to have COVID-19 in Guangzhou; the majority of whom (n=284) were admitted to Guangzhou Eighth People's Hospital designated for infectious disease. At the time of reporting (20<sup>th</sup> March 2020), 97% of patients have been discharged with undetectable viral RNA. In this study, we summarized the clinical characteristics and patterns of use of antiviral drugs and their relationships with viral RNA clearance in patients with COVID-19.

## **Methods**

### **Study design and participants**

This is a retrospective study of consecutive patients with COVID-19 who were admitted to

Guangzhou Eighth People's Hospital between 20<sup>th</sup> January 2020 and 15<sup>th</sup> March 2020. The hospital was responsible for admitting the majority of COVID-19 confirmed cases in Guangzhou area. Patients were admitted from outpatient clinics or transferred from other hospitals. All confirmed COVID-19 cases, even asymptomatic, were isolated until viral RNA test became negative. The study was approved by the ethics committee of the Eighth Hospital of Guangzhou and all patients gave written informed consent.

## **Definition**

COVID-19 infection was confirmed by positive SARS-CoV-2 RNA test in respiratory tract samples using real-time RT-PCR method according to the manufacturer protocol (Daan Gene Co. Ltd, Guangzhou, China). For symptomatic patients, illness onset date was defined as the date when the symptoms (eg, fever, cough) first appeared. For asymptomatic patients, the date of first positive RT-PCR test was defined as the illness onset date.

According to the Chinese COVID-19 guideline [11], the severity of COVID-19 infection was grouped into four categories: mild, moderate, serious, and critical illness. Patients with mild illness did not have chest computed tomography (CT) findings, while those with moderate illness had features of pneumonia on chest CT but the symptoms were mild. Serious illness was defined by presence of at least one of the following criteria: (i) breathing rate >30/min; (ii) pulse oximeter oxygen saturation (SaO<sub>2</sub>) <93% at rest; (iii) ratio of partial pressure of arterial oxygen (PaO<sub>2</sub>) to fraction of inspired oxygen (FiO<sub>2</sub>) <300mmHg (1mmHg=0.133kPa). Critical illness was defined by presence of at least one of the following criteria: (i) occurrence of respiratory failure requiring mechanical ventilation; (ii) shock; (iii) failure of other organs requiring treatment in the intensive care unit (ICU). In our study, a group of patients were asymptomatic throughout the whole clinical course, although some of them had features of pneumonia on chest CT. To distinguish them from other patients, we defined them as asymptomatic patients.

Patients fulfilling all of the following criteria can be discharged: i) afebrile for >3 days, ii) improved respiratory symptoms, iii) resolution of infiltration shadows on pulmonary imaging, and iv) clearance of viral RNA. The latter was defined if nuclear acid test was negative in at least two sequential respiratory tract samples collected with more than 24 h interval [11]. In our study, the viral RNA tests in respiratory tract samples were repeated every 2-3 days since

admission, and the first negative test date of sequential negative tests was defined as the viral RNA cleared day.

### **Data collection**

The records of patients with COVID-19 infection were extracted from the hospital electronic medical system. Demographic, clinical, laboratory, imaging and treatment data were collected and reviewed by trained physicians.

### **Statistical analysis**

Statistical analysis was performed using the IBM SPSS Statistics 20.0. Continuous variables were expressed as median (interquartile range, IQR), and categorical variables were expressed as number (%). Nonparametric test for continuous data and ordinal data, and chi-test for categorical data were used for between-group comparisons. Kaplan-Meier curve with log-rank test was used to evaluate the impact of demographic and clinical factors on time to viral RNA clearance and hospital stay, and Cox regression were used for controlling confounding factors. Logistic regression was used to evaluate the effect of antiviral regimens on day-14 clearance rate. A p value <0.05 (2-tailed) was considered to be statistically significant.

## **Results**

### **Baseline characteristics**

Overall, 284 patients with COVID-19 infection were included in this study, accounting for 82% of patients in Guangzhou during the reporting period (Table 1). The median age was 48 years old (IQR: 33-62), and 6 patients were adolescents (age <16 years old). A total of 131 (46.1%) patients were male, and 28 (9.9%) patients were smokers. The median incubation period was 6 days (IQR: 4-10), and the median interval from illness onset to hospital admission was 4 days (IQR: 2-7). Among these patients, 172 (62.0%) had a history of exposure to area of epicenter (Hubei province) or close contacts with people from Hubei, and 104 (36.6%) patients had at least one comorbidity, including hypertension (19.0%), diabetes (7.0%), cardiovascular diseases (5.3%), and malignancy (1.8%).

Fever (65.1%) and cough (59.6%) were the most common symptoms. The majority (64.8%) of patients had normal body temperature at the time of hospital admission. The laboratory

findings were described in Table 1. Over half of patients (57.9%) had elevated D-dimer levels, and 38.3% had elevated procalcitonin levels. According to the severity of clinical manifestation and chest imaging, 22 (7.7%), 199 (70.1%), 40 (14.1%), and 6 (2.1%) patients were categorized into mild, moderate, serious, and critical illness, respectively, and 17 patients (6.0%) were asymptomatic throughout the whole clinical course although 11 of them had a pneumonia CT image on admission. No significant differences were observed in disease severity by sex and smoking status. Elderly patients and those with comorbidity were more likely to have serious and critical illness (Table 2).

### **Treatment**

The majority of patients received antibiotic treatment (75.0%) and oxygen therapy (64.8%). Four (1.4%) patients received mechanical ventilation, and 24 (8.5%) patients were admitted to ICU. A total of 25 (8.8%) patients received chloroquine, and 36 (12.7%), 78 (27.5%), 69 (24.3%) patients were treated with the antiviral drugs of oseltamivir, lopinavir/ritonavir, and arbidol, respectively. Thirty-one (10.9%) patients were treated with corticosteroid, 9 (3.2%) patients received immunoglobulin, and 2 (0.7%) patients received ribavirin (Table 1).

### **Outcome and viral RNA clearance**

At the time of reporting (20<sup>th</sup> March 2020), 276 (97.2%) patients have recovered and were discharged from hospital with a median hospital stay of 18 days (IQR: 13-24, range: 6-46). One (0.4%) 81-year-old woman died 17 days after hospital admission. She had serious illness and comorbid pancreatic cancer, diabetes and cardiovascular disease at the time of admission. Four (three critical and one moderate) patients were transferred to other hospitals, and three (two moderate and one serious) patients were still recovering in the hospital.

A total of 280 (98.6%) patients with undetectable viral RNA had valid data on time to viral RNA clearance. The median duration from illness onset to viral RNA clearance was 12 days (IQR:8-16), and 7 days (IQR: 4-11) from hospital admission to clearance. Overall, 89.3% patients achieved viral RNA clearance within 21 days and 66.1% within 14 days (Figure 1)

### **Factors and therapeutic regimens associated with viral RNA clearance**

We compared the time to viral RNA clearance by demographic and clinical characteristics. As shown in Table 1 and Table 3, time lag from illness onset to hospital admission, old age, disease severity, high body temperature, and corticosteroid use were associated with delayed

viral RNA clearance. Breath shortness, elevated white blood cell count, reduced serum albumin, oxygen therapy, and immunoglobulin use were also associated with delayed viral RNA clearance; however the association became insignificant after adjusting for age, disease severity and time lag from illness onset to hospital admission. No significant associations with sex, smoking status, comorbid diseases, and other disease symptoms were observed (Table 1 and Table 3).

There was no specific guideline on indication of use of antiviral drugs. We compared the effects of different antiviral drug combinations (chloroquine, oseltamivir, arbidol, and lopinavir/ritonavir) on viral RNA clearance. As shown in Table 4, 121 (43.2%) patients did not receive any antiviral drugs, and the median duration was 11 days (IQR: 7-15) from illness onset, and 6 days (IQR: 4-9) from hospital admission to viral RNA clearance. The use of antiviral drugs, as monotherapy or in combination, was not associated with improved clearance of viral RNA compared to those did not receive antiviral drugs. Patients treated with lopinavir/ritonavir, a combination therapy for treating HIV infection, tended to have delayed viral RNA clearance, even after controlling for age, disease severity, time lag from illness onset to hospital admission, temperature, and corticosteroid use. The combined use of two antiviral agents was also associated with delayed clearance of viral RNA after adjusting for confounders. The analysis focusing on patients with moderate illness yielded similar results (Table 4 and Figure 1).

## **Discussion**

In this retrospective study, 89% of patients with COVID 19 achieved viral RNA clearance within 21 days. Time lag from illness onset to hospital admission, old age, disease severity, high body temperature, and corticosteroid use were associated with delayed clearance of viral RNA. The use of antiviral drugs (chloroquine, oseltamivir, arbidol, and lopinavir/ritonavir) had no benefit on such clearance. After adjusting for confounders, the use of lopinavir/ritonavir or the combination of two antiviral drugs tended to delay the clearance of viral RNA.

In this study, the median time from illness onset to viral RNA clearance was 12 days. This was compared to 15 days reported in patients from Wuhan [18], which might reflect the more severe nature of the latter patients. Currently, there is no consensus on the de-isolation



management for patients with COVID-19, especially in asymptomatic subjects with high risk of infectivity. In this cohort, 89% of patients achieved viral RNA clearance within 21 days, and only 66% within 14 days. Specifically, all asymptomatic patients achieved viral RNA clearance within 21 days. These data suggested that isolation for at least 21 days after the onset of symptom or first positive PCR test is warranted in both patients without or with improving symptoms.

Symptomatic treatment and supportive care is the mainstay management of COVID-19. No antiviral drugs specific for COVID-19 have been approved, although there are ongoing clinical trials in COVID 19 evaluating the efficacy of various drugs approved for other conditions [19]. Chloroquine is an oral anti-malaria drug with in-vitro antiviral activity against SARS-CoV2 [20]. In some small-scale uncontrolled studies, chloroquine was reported to improve symptoms and clearance of viral RNA [15]. This drug is being recommended for the treatment of hospitalized COVID-19 patients in China and some countries [11, 17]. In this study, 28 patients were treated with chloroquine which did not appear to improve viral RNA clearance compared to supportive treatment. Large scale randomized controlled studies are needed to confirm its benefit, if any.

Lopinavir/ritonavir is a fixed dose combination of anti-HIV protease inhibitors acting against the viral 3CL protease [21]. Although it has been used to treat COVID-19 [22], its benefits has not been confirmed in a clinical trial involving COVID-19 patients with pneumonia in Wuhan [16]. In our study, apart from lack of benefit, the use of lopinavir/ ritonavir tended to delay viral RNA clearance, even after adjusting for factors including disease severity.

Arbidol is an antiviral drug approved in Russia and China for treating influenza. It acts against influenza A and B by inhibiting viral fusion with cellular membrane and blocking the virus entry into host cells [23]. In a retrospective cohort study, arbidol accelerated the clearance of viral RNA in patients with COVID-19 compared to empirical treatment [14]. In China, it has been recommended as one of the antiviral drugs for COVID-19 [11]. Oseltamivir is another drug approved for the treatment of influenza A and B [24], and has been used in some patients with COVID-19 [3, 7]. In this study, neither arbidol nor oseltamivir exhibited positive effects on the viral RNA clearance of COVID-19. Further, the combination of arbidol with another antiviral drug, oseltamivir or lopinavir/ritonavir, tended to delay clearance of viral RNA.

In this study, only 10% of patients received corticosteroid treatment compared to 50%-79% as reported in patients from Wuhan [7, 9]. Our analysis indicated that corticosteroid use was associated with delayed viral RNA clearance, in line with a recent report from Wuhan [18]. This may be due to selection bias since patients with serious/critical illness were more likely to be treated with corticosteroid. Moreover, corticosteroid can suppress the immune system and delay clearance of viral RNA [25], calling for its cautious use in patients with COVID-19.

Older age and disease severity are major determinants of persistence of viral RNA. While the immune system weakens with aging [26], disease severity is a reflection of the host immunity. Indeed, over 35% of patients aged 65 years old or above had serious or critical illness. Here, public health measures such as social distancing, widespread testing, quarantine and contact tracing will not only reduce the spread of COVID-19 but also allows early detection of patients with mild disease for timely supportive treatment. This will help reduce the burden on the healthcare system for treating patients with serious illness and reduce morbidity mortality rates. In Guangzhou, with increased vigilance after the initial outbreak, these measures together with adequate medical facilities and support, the mortality rate was less than 1% compared to 3-4% during the early phase of the outbreak in Wuhan.

There were some limitations in this study. First, due to small sample size, our data regarding treatment efficacy of antiviral drugs should be interpreted with caution. Second, our patients had predominately mild to moderate illness and the results may not apply to those with serious or critical illness. Third, the RT-PCR test used to detect viral nuclear acid in this study may not be sensitive enough to detect samples with low viral load with possible false-negative results. Fourth, the viral RNA test was repeated every 2-3 days after hospitalization, therefore the time to viral RNA clearance may have a little bias. Lastly, it is a retrospective single-center study, and large-scale prospective studies are needed to confirm these findings.

In conclusion, in patients with COVID-19, a minimum of 21 days' isolation since illness onset may be warranted even for asymptomatic patients. Old people are more likely to have serious illness with delayed clearance of viral RNA, and may require prolonged period of support and isolation. The use of antiviral drugs (chloroquine, oseltamivir, arbidol, and lopinavir/ritonavir) did not improve viral RNA clearance, while corticosteroid use was associated with delayed clearance of viral RNA and should be used with caution.

### **Contributions**

XC, YZ, BZ, and JW designed the study. XC, JZ, WH, XH, JC, HZ, SQ, and JW contributed to disease diagnosis and treatment and data collection. YZ and BZ analyzed data, XC, YZ, BZ, JCNC and JW wrote the paper. All authors reviewed the paper and approved the final version of the paper

### **Funding:**

This work was supported by the grant from National Natural Science Foundation of China (grant numbers: 81802551)

### **Acknowledgement**

We thank all patients and care providers who participated in this study.

### **Conflict of Interest:**

The authors declare no conflict of interests.

## References

1. Huang C, Wang Y, Li X, Ren L, *et al.* Clinical features of patients infected with 2019 novel coronavirus in Wuhan, China. *Lancet* 2020, **395**(10223):497-506.
2. Li Q, Guan X, Wu P, Wang X, *et al.* Early Transmission Dynamics in Wuhan, China, of Novel Coronavirus-Infected Pneumonia. *N Engl J Med* 2020.
3. Guan WJ, Ni ZY, Hu Y, Liang WH, *et al.* Clinical Characteristics of Coronavirus Disease 2019 in China. *N Engl J Med* 2020.
4. Arshad Ali S, Baloch M, Ahmed N, Arshad Ali A, *et al.* The outbreak of Coronavirus Disease 2019 (COVID-19)-An emerging global health threat. *J Infect Public Health* 2020.
5. World Health Organization. Coronavirus disease (COVID-2019) situation reports. <https://www.who.int/emergencies/diseases/novel-coronavirus-2019/situation-reports> (accessed on 6 Apr).
6. Yang W, Cao Q, Qin L, Wang X, *et al.* Clinical characteristics and imaging manifestations of the 2019 novel coronavirus disease (COVID-19):A multi-center study in Wenzhou city, Zhejiang, China. *J Infect* 2020, **80**(4):388-393.
7. Mo P, Xing Y, Xiao Y, Deng L, *et al.* Clinical characteristics of refractory COVID-19 pneumonia in Wuhan, China. *Clin Infect Dis* 2020.
8. Wang D, Hu B, Hu C, Zhu F, *et al.* Clinical Characteristics of 138 Hospitalized Patients With 2019 Novel Coronavirus-Infected Pneumonia in Wuhan, China. *JAMA* 2020.
9. Chen T, Wu D, Chen H, Yan W, *et al.* Clinical characteristics of 113 deceased patients with coronavirus disease 2019: retrospective study. *BMJ* 2020, **368**:m1091.
10. Ling Y, Xu SB, Lin YX, Tian D, *et al.* Persistence and clearance of viral RNA in 2019 novel coronavirus disease rehabilitation patients. *Chin Med J (Engl)* 2020.
11. Guidelines for the Prevention, Diagnosis, and Treatment of Novel Coronavirus-induced Pneumonia, The 7th ed. [http://www.gov.cn/zhengce/zhengceku/2020-03/04/content\\_5486705.htm](http://www.gov.cn/zhengce/zhengceku/2020-03/04/content_5486705.htm) (accessed March 25, 2020).
12. European Centre for Disease Prevention and Control. Discharge criteria for confirmed COVID-19 cases--When is it safe to discharge COVID-19 cases from the hospital or end home isolation? <https://www.ecdc.europa.eu/sites/default/files/documents/COVID-19-Discharge-criteria.pdf> (accessed on March 30, 2020).
13. Deng L, Li C, Zeng Q, Liu X, *et al.* Arbidol combined with LPV/r versus LPV/r alone against Corona Virus Disease 2019: A retrospective cohort study. *J Infect* 2020.
14. Xu K, Chen Y, Yuan J, Yi P, *et al.* Clinical Efficacy of Arbidol in Patients with 2019 Novel Coronavirus-Infected Pneumonia: A Retrospective Cohort Study. 2020.
15. Gautret P, Lagier JC, Parola P, Hoang VT, *et al.* Hydroxychloroquine and azithromycin as a treatment of COVID-19: results of an open-label non-randomized clinical trial. *Int J Antimicrob Agents* 2020:105949.

16. Cao B, Wang Y, Wen D, Liu W, *et al.* A Trial of Lopinavir-Ritonavir in Adults Hospitalized with Severe Covid-19. *N Engl J Med* 2020.
17. Interim Clinical Guidance for Patients Suspected of / Confirmed with COVID-19 in Belgium. 24 March 2020; Version 5.  
[https://epidemiology.wiv-isp.be/ID/Documents/Covid19/COVID-19\\_InterimGuidelines\\_Treatment\\_ENG.pdf](https://epidemiology.wiv-isp.be/ID/Documents/Covid19/COVID-19_InterimGuidelines_Treatment_ENG.pdf) (assessed on March 30).
18. Chen X, Hu W, Jiabin L, Mo Z, *et al.* Hypertension and Diabetes Delay the Viral Clearance in COVID-19 Patients. 2020.
19. Dong L, Hu S, Gao J. Discovering drugs to treat coronavirus disease 2019 (COVID-19). *Drug Discov Ther* 2020, **14**(1):58-60.
20. Yao X, Ye F, Zhang M, Cui C, *et al.* In Vitro Antiviral Activity and Projection of Optimized Dosing Design of Hydroxychloroquine for the Treatment of Severe Acute Respiratory Syndrome Coronavirus 2 (SARS-CoV-2). *Clin Infect Dis* 2020.
21. Nukoolkarn V, Lee VS, Malaisree M, Aruksakulwong O, *et al.* Molecular dynamic simulations analysis of ritonavir and lopinavir as SARS-CoV 3CL(pro) inhibitors. *J Theor Biol* 2008, **254**(4):861-867.
22. Baden LR, Rubin EJ. Covid-19 - The Search for Effective Therapy. *N Engl J Med* 2020.
23. Boriskin YS, Leneva IA, Pecheur EI, Polyak SJ. Arbidol: a broad-spectrum antiviral compound that blocks viral fusion. *Curr Med Chem* 2008, **15**(10):997-1005.
24. Malosh RE, Martin ET, Heikkinen T, Brooks WA, *et al.* Efficacy and Safety of Oseltamivir in Children: Systematic Review and Individual Patient Data Meta-analysis of Randomized Controlled Trials. *Clin Infect Dis* 2018, **66**(10):1492-1500.
25. Oppong E, Cato AC. Effects of Glucocorticoids in the Immune System. *Adv Exp Med Biol* 2015, **872**:217-233.
26. Sadighi Akha AA. Aging and the immune system: An overview. *J Immunol Methods* 2018, **463**:21-26.

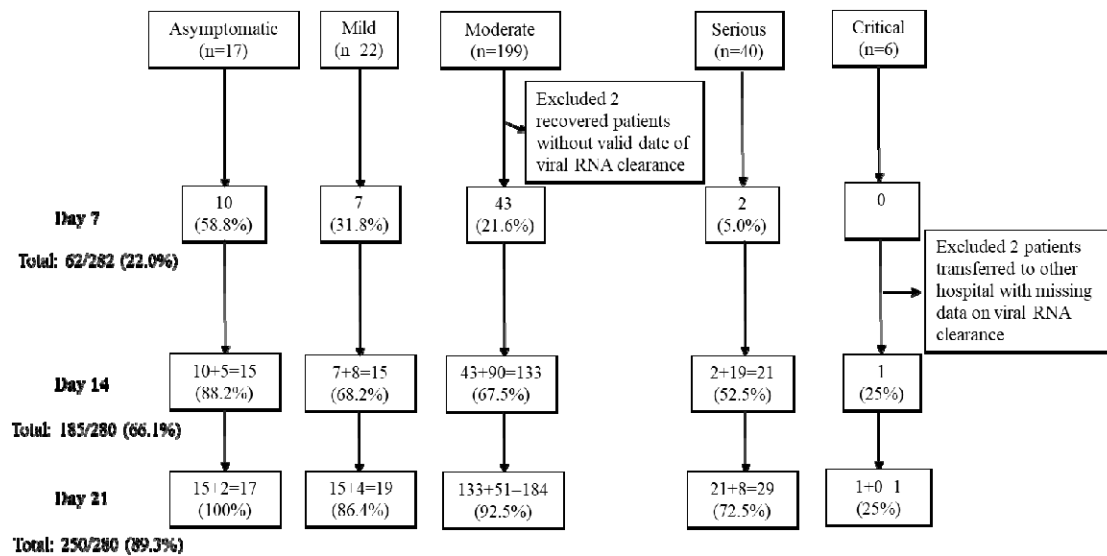
## Figure Legends

### **Figure 1. The cumulative viral RNA clearance rate at day 7, day 14, and day 21 by severity of COVID-19 infection.**

The diagram showed the cumulative clearance rate at day 7, day 14, and day 21 by severity of COVID-19 infection. Number (%) of patients were presented.

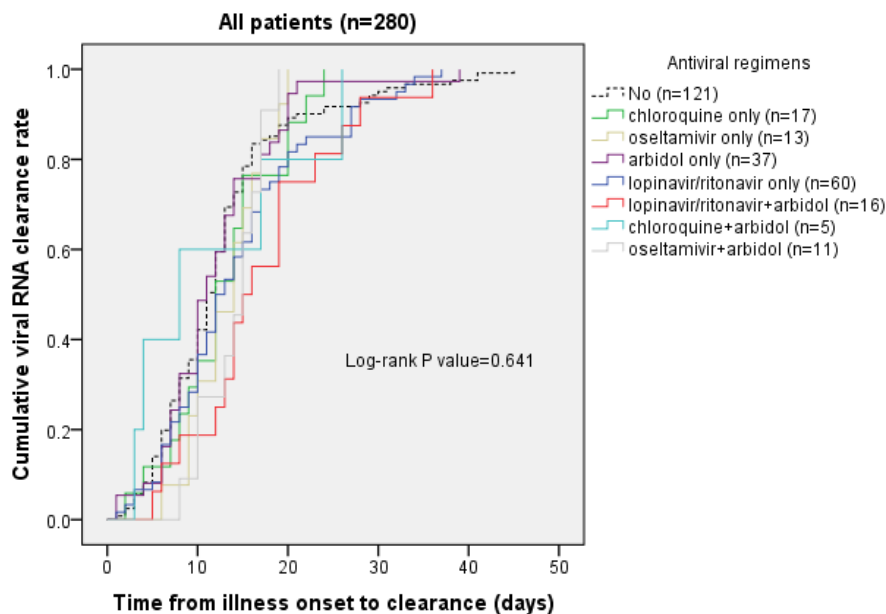
**Figure 2. Kaplan-Meier curve of COVID-19 viral clearance rate by antiviral treatment regimens.** (A) cumulative viral RNA clearance by time from illness onset in all patients with COVID-19 infection (n=280); (B) cumulative viral RNA clearance rate by time from hospital admission in all patients (n=280); (C) cumulative viral RNA clearance by time from illness onset in patients with moderate illness (n=204); (D) cumulative viral clearance by time from hospital admission in patients with moderate illness (n=204). Log-rank test was used for group comparisons.

**Figure 1**

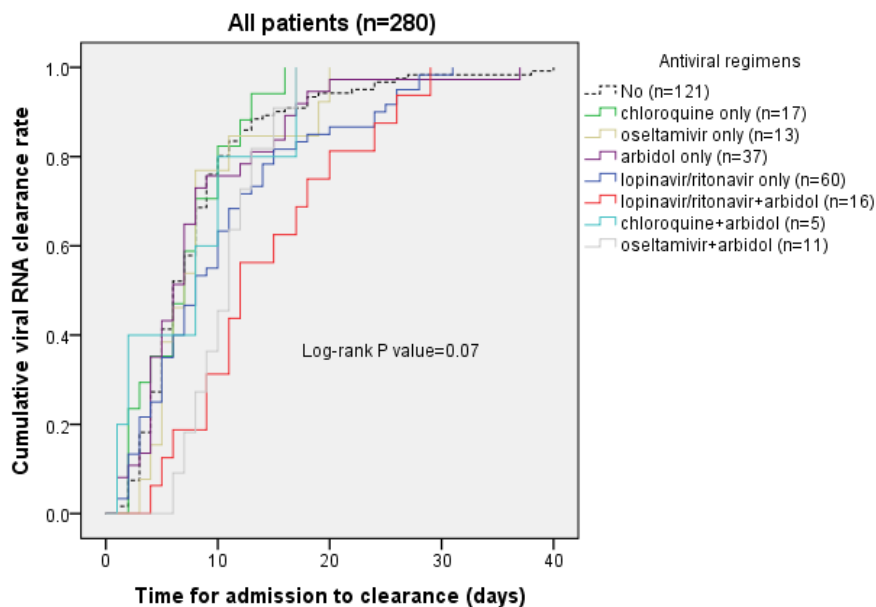


**Figure 2**

A.

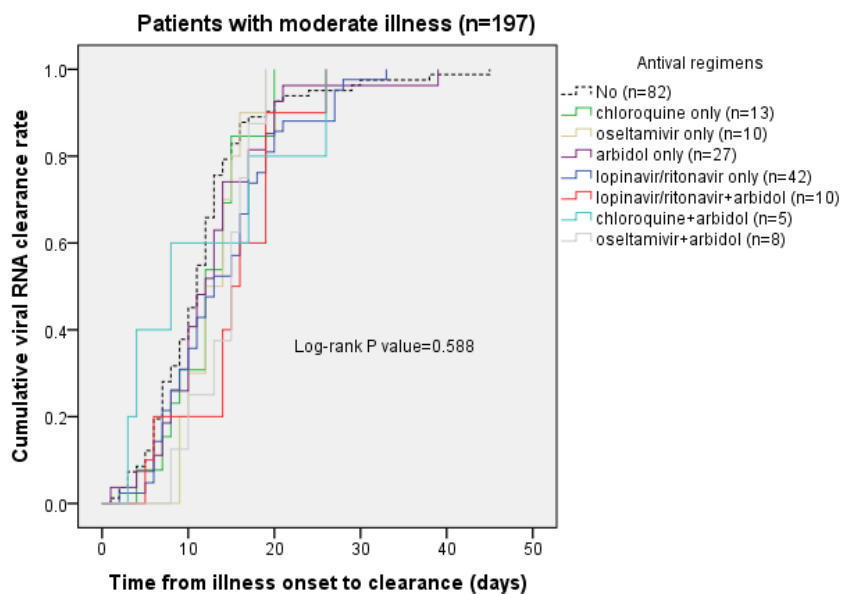


B.

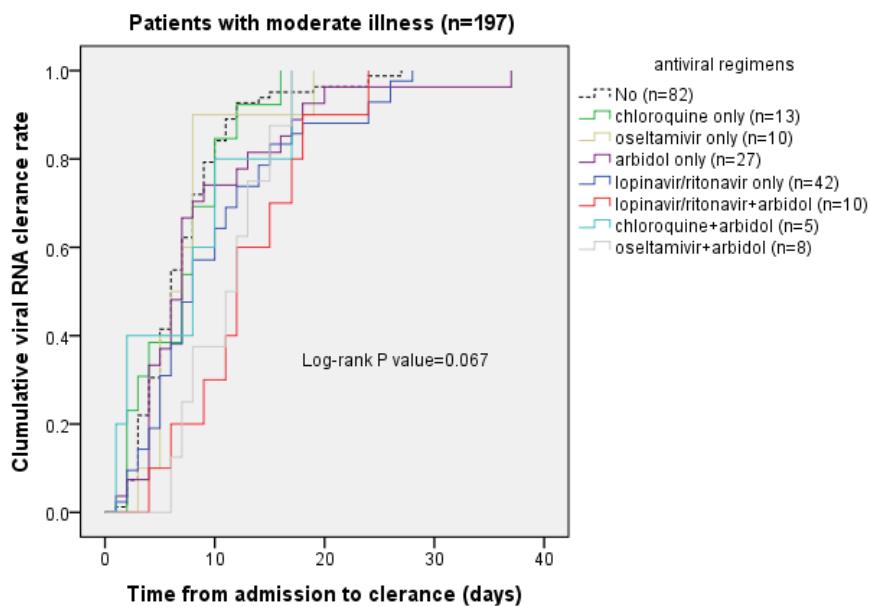




C.



D.



**Table 1. Baseline characteristics and treatment outcomes in patients with COVID-19.**

	Total (n=284)	clearance time from illness onset *		P value
		≤14 days (n=185)	>14 days since onset (n=95)	
No. patients with viral RNA clearance	280 (98.6)		-	
Age, median (IQR) years	48 (33-62)	47 (33-61)	54 (37-63)	<b>0.047</b>
<16 years	6 (2.1)	4 (2.2)	2 (2.1)	
16-49 years	142 (50.0)	99 (53.5)	40 (42.1)	0.329
50-64 years	91 (32.0)	56 (30.3)	35 (36.8)	
≥65 years	45 (15.8)	26 (14.4)	18 (18.9)	
Sex				0.717
Female	153 (53.9)	99 (53.5)	53 (55.8)	
Male	131 (46.1)	86 (46.5)	42 (44.2)	
Smoking				0.721
No	256 (90.1)	167 (90.3)	87 (91.6)	
Yes	28 (9.9)	18 (9.7)	8 (8.4)	
History of exposure to Hubei or close contact with people from Hubei	176 (62.0)	117 (63.2)	56 (58.9)	0.484
Estimated incubation period, days	6 (4-10)	7 (4-10)	6 (3-8)	0.083
Time lag from illness onset to hospital admission, days	4 (2-7)	3 (1-6)	5 (2-8)	<b>&lt;0.0001</b>
<b>Severity of disease</b>				
Asymptomatic	17 (6.0)	15 (8.1)	2 (2.1)	
Mild	22 (7.7)	15 (8.1)	7 (7.4)	
Moderate	199 (70.1)	133 (71.9)	64 (67.4)	<b>0.036</b>
Serious	40 (14.1)	21 (11.4)	19 (20.0)	
Critical	6 (2.1)	1 (0.5)	3 (3.2)	
<b>Comorbidities</b>	104 (36.6)	70 (37.8)	33 (34.7)	0.610
Hypertension	54 (19.0)	38 (20.5)	16 (16.8)	0.458
Diabetes	20 (7.0)	11 (5.9)	9 (9.5)	0.278
Cardiovascular disease	15 (5.3)	11 (5.9)	3 (3.2)	0.469
Cerebrovascular diseases	7 (2.5)	4 (2.2)	3 (3.2)	0.920
Respiratory disease	10 (3.5)	9 (4.9)	1 (1.1)	0.104
Chronic liver disease	12 (4.2)	6 (3.2)	5 (5.3)	0.517
Renal disease	4 (1.4)	3 (1.6)	1 (1.1)	1.000
Malignancy	5 (1.8)	3 (1.6)	2 (2.1)	1.000
<b>Symptoms and signs</b>				
Maximum temperature on admission, °C	37.0 (36.7-37.8)	37.0 (36.7-37.6)	37.1 (36.6-38.2)	0.372

<37.5°C	184 (64.8)	129 (72.1)	54 (57.4)	
37.5-37.9 °C	32 (11.6)	21 (11.7)	11 (11.7)	
38.0-38.9 °C	52 (18.8)	24 (13.4)	27 (28.7)	<b>0.020¶</b>
≥39.0 °C	9 (3.2)	5 (2.8)	2 (2.1)	
Fever before admission	185 (65.1)	116 (62.7)	65 (68.4)	0.343
Cough	161 (59.6)	99 (56.6)	58 (63.7)	0.260
Expectoration	76 (28.1)	47 (26.9)	27 (29.7)	0.627
Fatigue	64 (23.7)	40 (22.9)	21 (23.1)	0.968
Muscle pain	48 (17.8)	27 (15.4)	19 (21.1)	0.247
Sore throat	35 (13.0)	22 (12.6)	13 (14.3)	0.695
Catarrh symptoms	35 (13.0)	22 (12.6)	11 (12.1)	0.910
Chest pain	3 (1.1)	3 (1.7)	0 (0.0)	0.553
Chest distress	21 (7.8)	13 (7.4)	8 (8.8)	0.696
Breath shortness	30 (11.1)	15 (8.6)	14 (15.4)	0.091
Diarrhea	21 (7.8)	8 (4.6)	11 (12.1)	<b>0.024#</b>
Nausea	14 (5.2)	9 (5.1)	5 (5.5)	0.903
Vomiting	7 (2.6)	4 (2.3)	3 (3.3)	0.932
Abdominal pain	3 (1.1)	1 (0.6)	1 (1.1)	1.00
Anorexia	47 (17.4)	29 (16.6)	18 (19.8)	0.530
Headache	32 (12.1)	23 (13.4)	8 (9.1)	0.313
<b>Laboratory findings</b>				
White blood cell (WBC) count, ×10 <sup>9</sup> /L	5.19 (4.14-6.39)	5.15 (4.07-6.39)	5.27 (4.18-6.45)	0.835
WBC > 9.5 × 10 <sup>9</sup> /L	12 (4.2)	6 (3.2)	6 (6.3)	0.373
WBC < 3.5 × 10 <sup>9</sup> /L	57 (20.1)	40 (21.6)	16 (16.8)	0.344
Neutrophil count, ×10 <sup>9</sup> /L	2.99 (2.16-3.87)	3.03 (2.17-3.85)	2.92 (2.15-4.01)	0.717
Lymphocyte count, ×10 <sup>9</sup> /L	1.35 (1.0-1.94)	1.37 (1.04-1.99)	1.31 (1.00-1.74)	0.249
Lymphocyte > 3.2 × 10 <sup>9</sup> /L	10 (3.5)	7 (3.8)	3 (3.2)	1.00
Lymphocyte < 1.1 × 10 <sup>9</sup> /L	93 (32.7)	59 (31.9)	32 (33.7)	0.866
Platelet count, ×10 <sup>9</sup> /L	195 (159-245)	196 (159-242)	195 (159-253)	0.765
Platelet count < 125 × 10 <sup>9</sup> /L	17 (6.0)	11 (5.9)	5 (5.3)	0.816
Hemoglobin, g/dl	13.8 (12.5-15.5)	14.2 (12.6-15.7)	13.6 (12.1-14.7)	<b>0.041#</b>
Hemoglobin < 12.5 g/dl	43 (15.2)	28 (15.2)	15 (15.8)	0.900
Alanine aminotransferase (ALT), U/L	21.8 (14.4-33.3)	21.3 (14.3-33.8)	22.8 (15.5-33.4)	0.264
ALT > 40 U/L	44 (16.5)	27 (15.8)	17 (18.7)	0.551
Aspartate aminotransferase (AST), U/L	18.7 (15.1-26.9)	18.3 (14.8-24.4)	19.6 (15.9-29.3)	0.056
AST > 35 U/L	36 (13.6)	20 (11.8)	15 (16.5)	0.286
Creatine kinase (CK), U/L	54 (36-88)	53 (31-81)	52 (40-98)	0.161
Procalcitonin, ng/ml	0.04 (0.03-0.07)	0.04 (0.03-0.06)	0.05 (0.03-0.09)	0.171

Procalcitonin > 0.05 ng/dl	105 (38.3)	62 (34.6)	40 (44.0)	0.135
Albumin, g/L	39.1 (35.3-42.3)	39.5 (36.3-42.6)	38.4 (34.8-41.6)	0.102
Albumin <40 g/L	162 (57.0)	98 (53.0)	62 (65.3)	<b>0.049#</b>
Total bilirubin, umol/L	10.1 (6.9-15.2)	10.2 (6.7-15.1)	9.8 (7.1-15.2)	0.686
Creatine, umol/L	62.4 (50.7-76.8)	62.1 (50.6-75.6)	63.3 (50.4-79.2)	0.520
Lactate dehydrogenase (LDH), U/L	190 (155-257)	188 (155-249)	196 (156-263)	0.838
LDH > 250 U/L	73 (25.7)	46 (24.9)	25 (26.3)	0.792
Lactic acid, mmol/L	1.8 (1.4-2.2)	1.8 (1.4-2.1)	1.9 (1.4-2.2)	0.183
Lactic acid >2.2 mmol/L	59 (20.8)	34 (18.4)	23 (24.2)	0.322
D-dimer, ug/L	1110 (780-1705)	1110 (775-1725)	1110 (780-1580)	0.793
D dimer >1000 ug/L	150 (57.9)	95 (57.2)	53 (59.6)	0.621
CD4%	42 (35-47)	41.9 (35.4-47.0)	43.7 (35.0-47.0)	0.793
CD8%	27 (20-31.4)	26.0 (20.0-30.2)	29.0 (21.5-32.0)	0.205
CD4/CD8 ratio	1.58 (1.22-2.18)	1.64 (1.25-2.20)	1.48 (1.12-2.15)	0.273
<b>Treatment</b>				
ICU care	24 (8.5)	12 (6.5)	10 (10.5)	0.234
Oxygen therapy	184 (64.8)	114 (61.6)	67 (70.5)	0.140
Mechanical ventilation	4 (1.4)	0	2 (2.1)	0.220
Antibiotics	213 (75.0)	133 (71.9)	76 (80.0)	0.140
Ribavirin	2 (0.7)	2 (0.1)	0	0.550
Chloroquine	25 (8.8)	14 (7.6)	10 (10.5)	0.402
Corticosteroid	31 (10.9)	10 (5.4)	19 (20.0)	<b>&lt;0.0001¶</b>
Immunoglobulin	8 (3.2)	2 (1.1)	4 (4.2)	0.202
Oseltamivir	36 (12.7)	17 (9.2)	18 (18.9)	<b>0.019¶</b>
Lopinavir /ritonavir	78 (27.5)	43 (23.2 )	34 (35.8)	<b>0.026¶</b>
Arbidol	69 (24.3)	43 (23.2)	26 (27.4)	0.448
<b>Outcome</b>				
Discharge with recovery	276 (97.2)	183 (98.9)	91 (95.8)	
Remain in hospital	3 (1.1)	0	3 (3.2)	0.084
Transfer to other hospital	4 (1.4)	1 (0.5)	1 (1.1)	
Dead	1 (0.4)	1 (0.5)	0	
Hospital stay, days	18.0 (13.0-24.0)	17.0 (12.0-23.0)	21.0 (15.0-28.0)	<b>&lt;0.0001</b>
Time from illness onset to viral RNA clearance, days	12.0 (8.0-16.0)	10.0 (6.0-12.0)	19.0 (16.0-26.0)	<b>&lt;0.0001</b>
Time from admission to viral RNA clearance, days	7.0 (4.0-11.0)	5.0 (3.0-8.0)	14.0 (9.0-19.0)	<b>&lt;0.0001</b>

Data were presented as number (%) for categorical variables, and median (interquartile range) for continuous variables.

\*Four patient did not have information on viral RNA clearance and were excluded in the between-group analysis.

¶ Remained significant ( $P < 0.05$ ) after adjustment for age, severity of disease, and time lag from illness onset to hospital admission.

# Became insignificant after adjustment for age, severity of disease, and time lag from illness onset to hospital admission.

**Table 2. Distribution of COVID-19 severity by demographic and clinical characteristics.**

	Asymptomatic (n=17)	Mild (n=22)	Moderate (n=199)	Serious (n=40)	Critical (n=6)	P value
Age, years						<0.0001
<16	3 (50.0)	2 (33.3)	1 (6.7)	0	0	
16-49	11 (7.7)	17 (12.0)	108 (76.1)	5 (3.5)	1 (0.7)	
50-64	2 (2.2)	3 (3.3)	62 (68.1)	24 (26.4)	0	
≥ 65	1 (2.2)	0	28 (62.2)	11 (24.4)	5 (11.1)	
Sex						0.511
Male	9 (6.9)	10 (7.6)	86 (65.6)	22 (16.8)	4 (3.1)	
Female	8 (5.2)	12 (7.8)	113 (73.9)	18 (11.8)	2 (1.3)	
Smoke						0.838
No	15 (5.9)	19 (7.4)	182 (71.1)	35 (13.7)	5 (2.0)	
Yes	2 (7.1)	3 (10.7)	17 (60.7)	5 (17.9)	1 (3.6)	
Comorbidities						<0.0001
No	14 (7.8)	18 (10.0)	133 (73.9)	14 (7.8)	1 (0.6)	
Yes	3 (2.9)	4 (3.8)	66 (63.5)	26 (25.0)	5 (4.8)	

Non-parametric tests with severity as rank variable were used.

**Table 3. Viral detectable duration by demographic and clinical characteristics in patients with COVID-19.**

	No. of patients	Median (IQR) days from illness onset to clearance	P value*	Adjusted P value§	Median (IQR) days from admission to clearance	P value*	Adjusted P value§
<b>Time lag from illness onset to admission</b>							
			<0.0001	-		0.07	
0-3 days	130	9.5 (6.0-15.0)			8.0 (5.0-12.25)	0.210	
4-6 days	55	13.0 (10.0-17.0)			8.0 (5.0-12.0)		
≥ 7 days	74	15.0 (12.0-17.5)			6.0 (4.0-8.0)		
<b>Age, years</b>							
			0.038			0.07	
<16	6	8.0 (5.5-15.3)			7.0 (4.5-10.8)		
16-49	139	11.0 (7.0-15.0)			6.0 (4.0-11.0)		
50-64	91	13.0 (10.0-17.0)			8.0 (5.0-12.0)		
≥ 65	44	13.0 (10.0-19.0)			8.0 (5.0-17.8)		
<b>Sex</b>							
			0.909			0.853	
Male	128	12.0 (7.3-15.8)			7.0 (5.0-11.8)		
Female	152	12.0 (8.0-17.0)			7.0 (4.0-11.0)		
<b>Smoking</b>							
			0.191			0.230	
No	254	12.0 (8.0-16.0)			7.0 (4.0-11.0)		
Yes	26	12.0 (5.8-15.3)			6.5 (4.0-11.0)		
<b>History of exposure to transmission</b>							
			0.919			0.256	
No		12.0 (7.0-16.0)			6.0 (4.0-10.0)		
Yes		12.0 (9.0-16.0)			8.0 (5.0-12.0)		
<b>Severity of disease</b>							
			<0.0001	-		0.001	
Asymptomatic*	17	6.0 (3.5-10.0)			5.0 (2.0-8.0)		
Mild	22	10.0 (6.0-15.0)			5.5 (4.0-10.3)		
Moderate	197	12.0 (8.0-16.0)			7.0 (4.0-11.0)		
Serious	40	14.0 (12.0-23.5)			9.0 (5.0-16.0)		
Critical	4	32.0 (18.3-39.0)			24.0 (11.5-36.5)		
<b>Comorbidities</b>							
			0.116			0.153	
No	177	12.0 (7.0-16.0)			7.0 (4.0-11.0)		
Yes	103	12.0 (10.0-16.0)			7.0 (4.0-12.0)		
<b>Hypertension</b>							
			0.473			0.546	
No	226	12.0 (7.0-16.0)			7.0 (4.0-11.0)		
Yes	54	12.0 (10.0-16.0)			7.0 (4.0-12.0)		
<b>Diabetes</b>							
			0.226			0.592	
No	260	12.0 (8.0-16.0)			7.0 (4.3-11.0)		
Yes	20	12.5 (10.0-19.8)			7.0 (4.0-11.8)		

**Symptoms**

Fever before admission			0.251		0.420		
No	99	11.0 (6.0-16.0)			7.0 (4.0-11.0)		
Yes	181	12.0 (10.0-17.0)			7.0 (5.0-11.5)		
Temperature on admission			0.049	0.019		0.008	0.013
<37.5	183	12.0 (7.0-15.0)			7.0 (4.0-10.0)		
37.5-37.9	32	13.0 (10.3-16.0)			7.0 (4.3-11.8)		
≥ 38.0	58	14.5 (10.0-20.0)			10.0 (6.0-16.3)		
Muscle pain			0.259			0.587	
No	219	12.0 (8.0-16.0)			7.0 (4.0-11.0)		
Yes	46	14.0 (10.8-19.0)			8.0 (5.8-11.3)		
Fatigue			0.962			0.502	
No	205	12.0 (8.0-16.5)			8.0 (5.0-12.0)		
Yes	61	12.0 (9.5-16.0)			7.0 (4.5-11.0)		
Sore throat			0.240			0.572	
No	231	12.0 (8.0-16.0)			7.0 (5.0-11.0)		
Yes	35	13.0 (10.0-16.0)			8.0 (5.0-12.0)		
Catarrh symptoms			0.454			0.427	
No	233	12.0 (8.0-17.0)			8.0 (5.0-11.0)		
Yes	33	12.0 (8.0-15.0)			6.0 (4.0-12.0)		
Cough			0.103			0.731	
No	109	12.0 (7.0-16.0)			8.0 (4.0-11.0)		
Yes	157	12.0 (9.0-16.5)			7.0 (5.0-12.0)		
Expectoration			0.222			0.731	
No	192	12.0 (8.0-16.0)			8.0 (4.0-11.0)		
Yes	74	12.5 (10.0-16.3)			6.5 (5.0-11.3)		
Chest distress			0.038	0.580		0.054	0.759
No	245	12.0 (8.0-16.0)			7.0 (5.0-11.0)		
Yes	21	11.0 (9.0-28.0)			6.0 (4.0-19.0)		
Breath shortness			0.012	0.377		0.035	0.589
No	237	12.0 (8.0-16.0)			7.0 (5.0-11.0)		
Yes	29	13.0 (10.0-24.5)			8.0 (4.0-17.5)		
Diarrhea			0.136			0.145	
No	247	12.0 (8.0-16.0)			7.0 (4.0-11.0)		
Yes	19	15.0 (12.0-20.0)			11.0 (6.0-15.0)		
Digestive symptoms			0.141			0.144	
No	235	12.0 (8.0-16.0)			7.0 (4.0-11.0)		
Yes	31	13.0 (11.0-17.0)			9.0 (6.0-15.0)		
Anorexia			0.764			0.130	
No	219	12.0 (8.0-16.0)			8.0 (5.0-12.0)		



Yes	47	12.0 (10.0-16.0)		6.0 (4.0-9.0)		
<b>Laboratory results</b>						
White blood cell count, $\times 10^9/L$			0.028	0.776		0.023 0.714
Low (<3.5)	56	12.0 (7.0-15.8)			6.0 (3.0-10.0)	
Normal (3.5-9.5)	212	12.0 (8.0-16.0)			7.0 (5.0-11.0)	
High (>9.5)	12	17.0 (9.3-32.5)			11.5 (3.5-25.0)	
Lymphocyte count, $\times 10^9/L$			0.191			0.441
Low (<1.1)	91	12.0 (7.0-17.0)			7.0 (4.0-11.0)	
Normal (1.1-3.2)	179	12.0 (8.0-16.0)			7.0 (4.0-12.0)	
High (>3.2)	10	9.0 (7.0-15.3)			7.0 (2.8-9.3)	
Platelet count			0.510			0.947
$< 125 \times 10^9/L$	264	12.0 (8.0-16.0)			7.0 (4.0-11.0)	
$\geq 125 \times 10^9/L$	16	11.0 (7.8-18.8)			7.0 (4.3-11.5)	
D-dimer			0.174			0.525
$\leq 1000 \text{ ug/L}$	107	12.0 (8.0-16.0)			7.0 (5.0-12.0)	
$> 1000 \text{ ug/L}$	148	12.0 (9.0-17.0)			7.0 (4.0-11.8)	
Alanine aminotransferase			0.745			0.795
$\leq 40 \text{ U/L}$	218	12.0 (8.0-16.3)			7.0 (4.0-12.0)	
$> 40 \text{ U/L}$	44	12.5 (10.0-16.8)			8.0 (5.0-11.8)	
Aspartate aminotransferase			0.137			0.200
$\leq 35 \text{ U/L}$	226	12.0 (8.0-16.0)			7.0 (4.0-11.0)	
$> 35 \text{ U/L}$	35	13.0 (8.0-20.0)			8.0 (5.0-12.0)	
Creatine kinase			0.642			0.597
$< 310 \text{ U/L}$	255	12.0 (8.0-16.0)			7.0 (4.0-11.0)	
$\geq 310 \text{ U/L}$	6	11.0 (6.8-24.0)			10.0 (3.8-19.0)	
Hemoglobin			0.847			0.594
$\geq 12.5 \text{ g/dl}$	236	12.0 (8.0-16.0)			7.0 (4.0-11.0)	
$< 12.5 \text{ g/dl}$	43	11.0 (8.0-17.0)			7.0 (6.0-11.0)	
Procalcitonin			0.421			0.121
$\leq 0.05 \text{ ng/dl}$	168	12.0 (8.0-16.0)			7.0 (4.0-10.0)	
$> 0.05 \text{ ng/dl}$	102	12.0 (8.0-17.3)			8.0 (5.0-12.3)	
Albumin			0.001	0.317		0.065 0.680
$\geq 40 \text{ g/L}$	120	11.0 (6.0-15.0)			7.0 (4.3-10.0)	
$< 40 \text{ g/L}$	160	13.0 (10.0-17.0)			7.0 (4.0-12.0)	
Total bilirubin			0.163			0.087 0.853
$< 26 \text{ umol/L}$	248	12.0 (8.0-16.0)			7.0 (4.0-11.0)	
$\geq 26 \text{ umol/L}$	32	13.0 (9.0-19.8)			8.0 (5.0-14.8)	
Lactate			0.319			0.147

dehydrogenase							
≤ 250 U/L	209	12.0 (8.0-16.0)			7.0 (4.0-11.0)		
> 250 U/L	71	12.0 (10.0-19.0)			8.0 (5.0-12.0)		
Lactic acid			0.063	0.663			0.238
≤ 2.2 mmol/L	223	12.0 (8.0-16.0)			7.0 (4.0-11.0)		
>2.2 mmol/L	57	13.0 (9.5-20.0)			8.0 (5.0-12.3)		
CD4/CD8 ratio			0.625				0.386
<1.4	44	13.5 ( 7.0-19.8)			8.0 (3.3-16.0)		
≥ 1.4	74	13.0 (10.0-17.3)			8.0 (4.8-14.3)		
<b>Treatment</b>							
ICU care			0.071				0.096
No	258	12.0 (8.0-16.0)			7.0 (4.0-11.0)		
Yes	22	14.0 (12.0-20.5)			9.5 (5.0-14.3)		
Oxygen therapy			0.036	0.947			0.059 0.987
No	99	10.0 (6.0-15.0)			6.0 (4.0-10.0)		
Yes	181	13.0 (9.0-17.0)			8.0 (5.0-12.0 )		
Antibiotics			0.245				0.006 0.120
No	71	10.0 (7.0-15.0)			5.0 (4.0-8.0)		
Yes	209	13.0 (9.0-17.0)			8.0 (5.0-12.0)		
Corticosteroid			<0.0001	0.004			<0.0001 0.007
No	251	12.0 (7.0-15.0)			7.0 (4.0-10.0)		
Yes	29	18.0 (12.5-27.0)			12.0 (8.5-21.0)		
Immunoglobulin			0.046	0.070			0.013 0.077
No	274	12.0 (8.0-16.0)			7.0 (4.0-11.0)		
Yes	6	25.5 (11.5-30.3)			22.0 (8.3-27.3)		
Chloroquine			0.936				0.181
No	256	12.0 (8.0-16.0)			7.0 (5.0-11.0)		
Yes	24	13.0 (8.0-17.0)			7.0 (2.3-10.0)		
Oseltamivir			0.638				0.393
No	245	12.0 (8.0-16.0)			7.0 (4.0-11.0)		
Yes	35	15.0 (10.0-17.0)			8.0 (6.0-12.0)		
Arbidol			0.788				0.176
No	211	12.0 (8.0-16.0)			7.0 (4.0-10.0)		
Yes	69	13.0 (8.0-17.0)			8.0 (5.0-14.0)		
Lopinavir /ritonavir			0.056	0.01			0.004 0.009
No	203	12.0 (8.0-15.0)			7.0 (4.0-10.0)		
Yes	77	14.0 (9.0-19.0)			9.0 (5.0-19.0)		

\* Log-rank test was used to compare the differences in time to clearance.

§ Variables with P<0.1 in the univariate analysis were further adjusted for age, disease severity, and time lag from illness onset to hospital admission by cox-regression.

**Table 4. The associations between antiviral regimens and viral clearance in patients with COVID-19.**

	Time to clearance since illness onset		Clearance rate 14 days after illness onset number (%)	OR (95%CI)§	Time to clearance since admission		Hospital stay	
	Median (IQR), days	Hazard ratio (95% CI)*			Median (IQR),days	Hazard ratio (95% CI)*	Median (IQR), days	Hazard ratio (95% CI)*
<b>Model 1: antiviral regimen in all patients (n=280)</b>								
No (n=121)	11.0 (7.0-15.0)	1.0 (reference)	88 (72.7)	1.0 (reference)	6.0 (4.0-9.0)	1.0 (reference)	17.0 (11.0-23.0)	1.0 (reference)
Chloroquine only (n=17)	12.0 (8.5-17.5)	0.98 (0.58-1.67)	11 (64.7)	0.69 (0.24-2.01)	7.0 (2.5-10.0)	1.08 (0.64-1.83)	17.0 (13.5-18.8)	1.40 (0.83-2.37)
Oseltamivir only (n=13)	14.0 (9.5-16.5)	0.87 (0.48-1.59)	8 (61.5)	0.60 (0.18-1.97)	7.0 (5.0-9.5)	1.03 (0.57-1.88)	23.0 (16.0-28.0)	0.76 (0.42-1.37)
Arbidol only (n=37)	11.0 (7.5-15.5)	0.80 (0.53-1.21)	28 (75.7)	1.17 (0.50-2.73)	6.0 (4.0-10.5 )	0.94 (0.62-1.41)	23.0 (14.0-26.0)	0.75 (0.50-1.28)
Lopinavir /ritonavir only (n=60)	12.5 (8.3-18.8)	0.78 (0.55-1.12)	35 (58.3)	0.53 (0.27-1.01)	8.0 (4.3-14.0)	0.83 (0.58-1.18)	19.0 (13.0-23.0)	1.12 (0.80-1.56)
Lopinavir/ritonavir+Arbidol (n=16)	15.5 (12.3-22.0)	<b>0.55</b> <b>(0.31-0.97)†</b>	7 (43.8)	<b>0.29</b> <b>(0.10-0.85)†</b>	12.0 (9.0-19.5)	0.57 (0.33-1.00)	23.5 (16.5-28.8 )	<b>0.49</b> <b>(0.28-0.87)†</b>
Chloroquine+Arbidol (n=5)	8.0 (3.5-21.5)	1.03 (0.41-2.62)	3 (60.0)	0.56 (0.09-3.52)	8.0 (1.5-13.5)	0.90 (0.36-2.27)	17.0 (11.0-24.0)	0.83 (0.33-2.10)
Oseltamivir+Arbidol (n=11)	15.0 (10.0-17.0)	0.68 (0.36-1.29)	5 (45.5)	0.31 (0.09-1.09)	11.0 (8.0-13.0)	0.67 (0.36-1.27)	18.0 (15.0-22.5)	0.86 (0.46-1.63)

**Model 2: antiviral regimens in patients with moderate illness (n=197)**

No (n=82)	11.0 (7.0-13.3)	1.0 (reference)	65 (79.3)	1.0 (reference)	6.0 (4.0-9.0)	1.0 (reference)	17.0 (11.0-23.0)	1.0 (reference)
Chloroquine only (n=13)	12.0 (8.5-15.0)	0.80 (0.44-1.46)	9 (69.2)	0.59 (0.16-2.15)	7.0 (2.5-10.0)	0.94 (0.52-1.71)	17.0 (13.5-18.8)	1.35 (0.74-2.47)
Oseltamivir only (n=10)	13.0 (9.8-15.3)	0.88 (0.44-1.75)	7 (70.0)	0.61 (0.14-2.61)	6.5 (5.0-8.0)	1.00 (0.50-1.99)	23.0 (16.8-28.0)	0.70 (0.35-1.37)
Arbidol only (n=27)	12.0 (8.0-17.0)	<b>0.56</b> <b>(0.34-0.92)†</b>	20 (74.1)	0.75 (0.27-2.06)	7.0 (4.0-12.0)	0.68 (0.41-1.11)	23.0 (14.0-26.0)	0.81 (0.50-1.31)
Lopinavir /ritonavir only (n=42)	13.0 (8.0-18.3)	<b>0.62</b> <b>(0.41-0.94)†</b>	22 (52.4)	<b>0.29</b> <b>(0.13-0.65)‡</b>	8.0 (5.0-14.0)	0.68 (0.45-1.03)	18.0 (13.0-23.0)	1.19 (0.81-1.77)
Lopinavir/ritonavir+Arbidol (n=10)	15.5 (12.0-19.0)	<b>0.45</b> <b>(0.23-0.90)†</b>	4 (40.0)	<b>0.17</b> <b>(0.05-0.69)†</b>	12.0 (8.3-17.3)	0.49 <b>(0.25-0.98)†</b>	23.5 (16.5-28.8)	0.63 (0.32-1.23)
Chloroquine+Arbidol (n=5)	8.0 (3.5-21.5)	0.85 (0.32-2.20)	3 (60.0)	0.39 (0.06-2.54)	8.0 (1.5-13.5)	0.76 (0.30-1.94)	17.0 (11.0-24.0)	0.81 (0.31-2.08)
Oseltamivir+Arbidol (n=8)	15.0 (10.8-16.8)	0.53 (0.25-1.11)	3 (37.5)	<b>0.16</b> <b>(0.04-0.72)†</b>	11.0 (7.3-14.5)	0.54 (0.26-1.14)	17.0 (15.0-22.8 )	0.98 (0.46-2.06)

HR: hazard ratio, CI: confidence interval.

\*In model 1, the hazard ratio was adjusted for age, disease severity, time lag from illness onset to hospital admission, body temperature, and corticosteroid use; in model 2, the hazard ratio was adjusted for age, time since illness onset to hospital admission, body temperature, and corticosteroid use.

§ According to the Event Per Variable (EPV) rule, notably  $EPV \geq 10$ , we did not perform adjustment for other variables in the logistic regression due to insufficient sample size.

†  $P < 0.05$ , ‡  $P < 0.01$ .