

## **Liver injury is associated with severe Coronavirus disease 2019 (COVID-19) infection: a systematic review and meta-analysis of retrospective studies**

Mohammad Parohan<sup>a\*</sup>, PhD, Sajad Yaghoubi<sup>b\*</sup>, PhD, Asal Seraj<sup>c</sup>, PhD

<sup>a</sup>Department of Cellular and Molecular Nutrition, School of Nutritional Sciences and Dietetics, Tehran University of Medical Sciences, Tehran, Iran.

<sup>b</sup>Department of Clinical Microbiology, Iranshahr University of Medical Sciences, Iranshahr, Iran.

<sup>c</sup>Department of Nursing, Damavand Branch, Islamic Azad University, Damavand, Iran.

\*Corresponding author:

Mohammad Parohan

Postal address: Tehran University of Medical Sciences, School of Nutritional Sciences and Dietetics ,44 Hojat Dost St, Naderi St, Enghelab Ave, Tehran, Iran. E-mail address: [prohan.m742@gmail.com](mailto:prohan.m742@gmail.com), [prohan-m@razi.tums.ac.ir](mailto:prohan-m@razi.tums.ac.ir), Telephone number: +98 911 143 5978

\*Additional corresponding author

Sajad Yaghoubi, Email address: [sajadyaghoubi98@gmail.com](mailto:sajadyaghoubi98@gmail.com)

Running title: Liver injury and severity of COVID-19 infection

## *Abstract*

**Aim:** The Coronavirus disease 2019 (COVID-19) outbreak is a major threat to human beings. Lung injury has been reported as the major outcome of COVID-19 infection. However, liver damage has also been considered to occur in severe cases. Current meta-analysis of retrospective studies was done to summarize available findings on the association between liver injury and severity of COVID-19 infection.

**Methods:** Online databases including PubMed, Scopus, Web of Science and Cochrane Library were searched to detect relevant publications up to 1 April 2020, using relevant keywords. To pool data, a fixed- or random-effects model was used depending on the heterogeneity between studies. Furthermore, publication bias test and sensitivity analysis were also done.

**Results:** In total, 20 retrospective studies with 3,428 COVID-19 infected patients (severe cases = 1,455 and mild cases = 1,973), were included in this meta-analysis. Higher serum levels of Aspartate aminotransferase (weighted mean difference = 8.84 U/L, 95% CI = 5.97 to 11.71,  $P < 0.001$ ), Alanine aminotransferase (weighted mean difference = 7.35 U/L, 95% CI = 4.77 to 9.93,  $P < 0.001$ ), total Bilirubin (weighted mean difference = 2.30 mmol/L, 95% CI = 1.24 to 3.36,  $P < 0.001$ ) and lower serum levels of Albumin (weighted mean difference = -4.24 g/L, 95% CI = -6.20 to -2.28,  $P < 0.001$ ), were associated with a significant increase in the severity of COVID-19 infection.

**Conclusions:** The incidence of liver injury seems to be higher in patients with severe COVID-19 infection. This finding could help physicians to identify patients with poor prognosis at an early stage.

**Keywords:** COVID-19; liver; Meta-analysis; novel coronavirus; SARS-CoV-2.

## *Introduction*

In December 2019, a cluster of severe acute respiratory syndrome (SARS), now known as Coronavirus disease 2019 (COVID-19), occurred in Wuhan city, the capital of Hubei Province, China<sup>1-3</sup>. The disease has rapidly spread from China to other countries. As of April 4, 2020, a total of 1,051,635 COVID-19 confirmed cases and 56,985 deaths in 206 countries and territories have been reported<sup>4</sup>. Full-genome sequencing indicated that COVID-19 is a distinct clade from the beta-coronaviruses associated with human SARS and Middle East respiratory syndrome (MERS)<sup>5</sup>.

SARS, MERS and COVID-19 can cause intestinal, respiratory, neuronal and hepatic diseases, and may lead to respiratory distress syndrome, organ failure, and even death in severe cases<sup>5-7</sup>. Several studies have reported the clinical characteristics and laboratory findings associated with different degrees of liver injury in patients with COVID-19 infection<sup>8-27</sup>. We are aware of no meta-analysis that summarized available findings in this regard. Thus, in this systematic review and meta-analysis, the laboratory findings and mechanism of liver injury caused by COVID-19 infection were summarized.

## *Materials and methods*

### *Study protocol*

A systematic literature search and a quantitative meta-analysis were planned, conducted and reported according to the Preferred Reporting Items for Systematic Reviews and Meta-Analyses (PRISMA) guidelines<sup>28</sup>.

### *Search strategy*

We conducted a literature search using the online databases of PubMed, Scopus, Web of Science and Cochrane Library for relevant publications up to 1 April 2020. The following medical subject headings (MeSH) and non-MeSH keywords were used in our search strategy: (“COVID-19” OR “severe acute respiratory syndrome coronavirus 2” OR “SARS-CoV-2” OR “novel coronavirus” OR “2019-nCoV”) AND (“Alanine Transaminase” OR “Alanine aminotransferase” OR “SGPT” OR “Aspartate Aminotransferases” OR “SGOT” OR “Bilirubin” OR “Serum Albumin” OR “Liver”). The literature search was performed by two reviewers (MP and SY). We also searched the reference lists of the articles to identify missed studies. No restriction was applied on time of publication and language. To facilitate the screening process of studies from online databases, all search results were downloaded into an EndNote library (version X8, Thomson Reuters, Philadelphia, USA). The search strategy is presented in detail in Supplementary Table 1.

### *Eligibility Criteria*

Studies were included if they met the following inclusion criteria: (1) observational studies with retrospective design; (2) all articles assessing the association between serum levels of Aspartate aminotransferase (AST), Alanine aminotransferase (ALT), Albumin, Bilirubin and severe outcome from COVID-19 infection as the major outcomes of interest and reported mean (SD) or median (IQR) for serum levels of AST, ALT, Albumin, Bilirubin in both severe and non-severe

COVID-19 infected patients. Expert opinion articles, review articles, books and theses were excluded.

#### *Data extraction and assessment for study quality*

Two reviewers (MP and AS) extracted the following data from the studies: author's name, publication year, study design, sample size, age and gender of patients, serum levels of AST, ALT, Albumin and Bilirubin and outcome assessment methods.

The Newcastle–Ottawa Scale was used for assessing the quality of the included studies<sup>29</sup>. Based on the NOS, a maximum of nine points can be awarded to each article. In this review, studies with the Newcastle–Ottawa Scale score of  $\geq 5$  were considered as high quality publications.

#### *Statistical analysis*

Mean (SD) or median (IQR) for serum levels of AST, ALT, Albumin and Bilirubin were used to estimate the effect size. The fixed or random-effect model was used based on heterogeneity test. The heterogeneity between studies was evaluated using the Cochrane Q test<sup>30</sup>. The publication bias was evaluated by the visual inspection of funnel plot and Egger's regression tests<sup>31</sup>. The sensitivity analysis was done to assess the effect of each study on the pooled effect size. All statistical analyses were performed using the Stata 14 software package (Stata Corp, College Station, TX, USA).

#### *Results*

### *Search results*

Overall, 212 articles were identified in our initial literature search. Of these, 35 duplicates, 29 non-English, 3 non-human, 18 reviews and 95 papers that did not fulfill our inclusion criteria were excluded, leaving 32 articles for further evaluation. Out of remaining 32 articles, 12 were excluded because of the following reason: did not report mean (SD) or median (IQR). Finally, we included 20 articles in this systematic review and meta-analysis (Figure 1).

### *Study characteristics*

All studies were conducted in China and used retrospective design<sup>8-27</sup>. The sample size of studies ranged from 21 to 651 patients (mean age, 53.3 years). All studies used real-time reverse transcriptase–polymerase chain reaction (RT-PCR) to identify COVID-19 infection. The Newcastle–Ottawa Scale scores ranged between 4 to 9. The characteristics of the included articles are presented in Table 1.

### *Serum levels of AST, ALT, total Bilirubin, Albumin and severity of COVID-19 infection*

In the overall pooled estimate of 20 studies with 3,428 COVID-19 infected patients (severe cases = 1,455 and mild cases = 1,973), it was shown that higher serum levels of AST (weighted mean difference = 8.84 U/L, 95% CI = 5.97 to 11.71,  $P < 0.001$ ,  $I^2 = 73.4\%$ ,  $P_{\text{heterogeneity}} < 0.001$ ) (Figure 2), ALT (weighted mean difference = 7.35 U/L, 95% CI = 4.77 to 9.93,  $P < 0.001$ ,  $I^2 = 57.2\%$ ,  $P_{\text{heterogeneity}} = 0.001$ ) (Figure 3) and total Bilirubin (weighted mean difference = 2.30 mmol/L, 95% CI = 1.24 to 3.36,  $P < 0.001$ ,  $I^2 = 68.8\%$ ,  $P_{\text{heterogeneity}} < 0.001$ ) (Figure 4), were associated with

a significant increase in the severity of COVID-19 infections. In addition, combined results from the random-effects model showed that lower serum levels of Albumin (weighted mean difference = -4.24 g/L, 95% CI = -6.20 to -2.28,  $P < 0.001$ ,  $I^2 = 95.7\%$ ,  $P_{\text{heterogeneity}} < 0.001$ ) (Figure 5), significantly increased severity of the disease.

#### *Publication bias and sensitivity analysis*

Based on the results of Egger's test (AST;  $P = 0.465$ , ALT;  $P = 0.171$ , total Bilirubin;  $P = 0.663$  and Albumin;  $P = 0.802$ ) and visual inspection of funnel plots, we found no evidence of publication bias (Supplementary Figures 1-4). Furthermore, findings from sensitivity analysis showed that overall estimates did not depend on a single study (Supplementary Figures 5-8).

#### *Discussion*

Findings from this meta-analysis supported the hypothesis that liver injury is associated with severe outcomes in patients with COVID-19 infection. To our knowledge, this study is the first systematic review and meta-analysis to assess the association between serum levels of AST, ALT, total Bilirubin and Albumin with severity of COVID-19 infection.

Our results are in agreement with previous narrative review<sup>32</sup>. Previously, liver damage has been reported as an important risk factor for severe outcome and death in SARS and MERS<sup>33-36</sup>.

Mild cases of COVID-19 showed symptoms of dry cough, fever, fatigue, myalgia and diarrhea. In severe cases, viral pneumonia, dyspnea and hypoxemia occurred 1 week after the onset of the disease, which may progress to acute respiratory distress syndrome, metabolic acidosis, septic

shock and even death<sup>12</sup>. Previous studies have shown that the incidence of liver injury in severe COVID-19 patients ranged from 58% to 78%<sup>37, 38</sup>, mainly indicated by elevated AST, ALT and total Bilirubin levels accompanied by slightly decreased Albumin levels<sup>12, 21, 24, 39</sup>. Currently, studies on the mechanisms of COVID-19 related liver dysfunction are limited. COVID-19 uses the angiotensin converting enzyme 2 (ACE2) as the binding site to enter the host cell in lungs, kidneys and heart<sup>40</sup>. Previous study showed that both liver and bile duct cells express ACE2<sup>41</sup>. In addition, the ACE2 expression of bile duct cells is much greater than that of liver cells. Bile duct epithelial cells are known to play important roles in initiation and regulation of immune responses and liver regeneration<sup>42</sup>. So there is at least theoretical potential possibility of direct liver and bile duct involvement by the virus.

Serum concentrations of pro-inflammatory cytokines, including IL-1 $\beta$ , IL-6 and TNF- $\alpha$  increased in the majority of severe cases, suggesting cytokine storm syndrome might be associated with disease severity<sup>43</sup>. Similarly, SARS and MERS were also characterized by exuberant inflammatory responses and end-organ damage<sup>44, 45</sup>. Besides, the cytokine storm syndrome was observed in severe COVID-19 cases<sup>43</sup>, yet whether it results in liver injury in patients remains to be investigated.

Mild lobular and portal activity along with moderate microvascular steatosis were observed in liver biopsy specimens, which might be caused by either COVID-19 infection or drug-induced liver injury<sup>46</sup>. Similar to the situation in SARS and MERS, steroids, antivirals and antibiotics are widely used for the treatment of COVID-19 patients<sup>47-49</sup>. Although these drugs are potential causes of liver dysfunction, there is little evidence that currently available drug combinations impair liver function in patients with COVID-19 infection<sup>24</sup>. Actually, a recent study showed



that the liver dysfunction might be caused by lopinavir/litonavir, which is used as antivirals for the treatment of COVID-19 patients<sup>50</sup>.

The present study has some limitations. First, interpretation of our meta-analysis findings might be limited by the small sample size. Second, there is a lack of reports that liver failure occurs in COVID-19 patients with chronic liver diseases and our meta-analysis did not include data such as chronic hepatitis B or C.

### *Conclusion*

In this meta-analysis of 3,428 patients with confirmed COVID-19 in China, liver dysfunction was associated with severe outcome from COVID-19 infection. From a clinical perspective, attention should be paid to monitor the occurrence of liver dysfunction, and to the application of drugs which may induce liver injury, such as steroids and antibiotics of quinolone or macrolides. Patients with liver dysfunction are advised to be treated with drugs that could both inhibit inflammatory responses and protect liver functions, such as ammonium glycyrrhizinate<sup>51</sup>, which in turn accelerates the process of disease recovery.

Declarations of interest: none

Funding: This research did not receive any specific grant from funding agencies in the public, commercial, or not-for-profit sectors.

## References:

- 1 Lu H, Stratton CW, Tang YW. Outbreak of pneumonia of unknown etiology in Wuhan, China: The mystery and the miracle. *Journal of medical virology*. 2020 Apr;92: 401-2.
- 2 Hui DS, E IA, Madani TA, et al. The continuing 2019-nCoV epidemic threat of novel coronaviruses to global health - The latest 2019 novel coronavirus outbreak in Wuhan, China. *International journal of infectious diseases : IJID : official publication of the International Society for Infectious Diseases*. 2020 Feb;91: 264-6.
- 3 Paules CI, Marston HD, Fauci AS. Coronavirus Infections-More Than Just the Common Cold. *Jama*. 2020 Jan 23.
- 4 World Health Organization. Coronavirus disease 2019 (COVID-19): situation report-75. April 4, 2020.
- 5 Zhu N, Zhang D, Wang W, et al. A Novel Coronavirus from Patients with Pneumonia in China, 2019. *The New England journal of medicine*. 2020 Feb 20;382: 727-33.
- 6 Peiris JS, Lai ST, Poon LL, et al. Coronavirus as a possible cause of severe acute respiratory syndrome. *Lancet (London, England)*. 2003 Apr 19;361: 1319-25.
- 7 Kupferschmidt K. Emerging diseases. Researchers scramble to understand camel connection to MERS. *Science (New York, NY)*. 2013 Aug 16;341: 702.
- 8 Chen G, Wu D, Guo W, et al. Clinical and immunologic features in severe and moderate Coronavirus Disease 2019. *The Journal of clinical investigation*. 2020 Mar 27.
- 9 Chen T, Wu D, Chen H, et al. Clinical characteristics of 113 deceased patients with coronavirus disease 2019: retrospective study. *Bmj*. 2020 Mar 26;368: m1091.
- 10 Deng Y, Liu W, Liu K, et al. Clinical characteristics of fatal and recovered cases of coronavirus disease 2019 (COVID-19) in Wuhan, China: a retrospective study. *Chinese medical journal*. 2020 Mar 20.
- 11 Gao Y, Li T, Han M, et al. Diagnostic Utility of Clinical Laboratory Data Determinations for Patients with the Severe COVID-19. *Journal of medical virology*. 2020 Mar 17.
- 12 Huang C, Wang Y, Li X, et al. Clinical features of patients infected with 2019 novel coronavirus in Wuhan, China. *Lancet (London, England)*. 2020 Feb 15;395: 497-506.
- 13 Jin X, Lian JS, Hu JH, et al. Epidemiological, clinical and virological characteristics of 74 cases of coronavirus-infected disease 2019 (COVID-19) with gastrointestinal symptoms. *Gut*. 2020 Mar 24.
- 14 Liu W, Tao ZW, Lei W, et al. Analysis of factors associated with disease outcomes in hospitalized patients with 2019 novel coronavirus disease. *Chinese medical journal*. 2020 Feb 28.
- 15 Mo P, Xing Y, Xiao Y, et al. Clinical characteristics of refractory COVID-19 pneumonia in Wuhan, China. *Clinical infectious diseases : an official publication of the Infectious Diseases Society of America*. 2020 Mar 16.
- 16 Pan L, Mu M, Ren HG, Yang P, Sun Y, Wang R. Clinical characteristics of COVID-19 patients with digestive symptoms in Hubei, China: a descriptive, cross-sectional, multicenter study. *Am J Gastroenterol*. 2020;20.
- 17 Qian GQ, Yang NB, Ding F, et al. Epidemiologic and Clinical Characteristics of 91 Hospitalized Patients with COVID-19 in Zhejiang, China: A retrospective, multi-centre case series. *QJM : monthly journal of the Association of Physicians*. 2020 Mar 17.
- 18 Qu R, Ling Y, Zhang YH, et al. Platelet-to-lymphocyte ratio is associated with prognosis in patients with coronavirus disease-19. *Journal of medical virology*. 2020 Mar 17.

- 19 Ruan Q, Yang K, Wang W, Jiang L, Song J. Clinical predictors of mortality due to COVID-19 based on an analysis of data of 150 patients from Wuhan, China. *Intensive care medicine*. 2020 Mar 3.
- 20 Wan S, Xiang Y, Fang W, et al. Clinical features and treatment of COVID-19 patients in northeast Chongqing. *Journal of medical virology*. 2020 Mar 21.
- 21 Wang D, Hu B, Hu C, et al. Clinical Characteristics of 138 Hospitalized Patients With 2019 Novel Coronavirus-Infected Pneumonia in Wuhan, China. *Jama*. 2020 Feb 7.
- 22 Wang Z, Yang B, Li Q, Wen L, Zhang R. Clinical Features of 69 Cases with Coronavirus Disease 2019 in Wuhan, China. *Clinical infectious diseases : an official publication of the Infectious Diseases Society of America*. 2020 Mar 16.
- 23 Wu C, Chen X, Cai Y, et al. Risk Factors Associated With Acute Respiratory Distress Syndrome and Death in Patients With Coronavirus Disease 2019 Pneumonia in Wuhan, China. *JAMA internal medicine*. 2020 Mar 13.
- 24 Yang X, Yu Y, Xu J, et al. Clinical course and outcomes of critically ill patients with SARS-CoV-2 pneumonia in Wuhan, China: a single-centered, retrospective, observational study. *The Lancet Respiratory medicine*. 2020 Feb 24.
- 25 Zhang X, Cai H, Hu J, et al. Epidemiological, clinical characteristics of cases of SARS-CoV-2 infection with abnormal imaging findings. *International journal of infectious diseases : IJID : official publication of the International Society for Infectious Diseases*. 2020 Mar 20.
- 26 Zhou B, She J, Wang Y, Ma X. The Clinical Characteristics of Myocardial injury 1 in Severe and Very Severe Patients with 2019 Novel Coronavirus Disease. *The Journal of infection*. 2020 Mar 21.
- 27 Zhou F, Yu T, Du R, et al. Clinical course and risk factors for mortality of adult inpatients with COVID-19 in Wuhan, China: a retrospective cohort study. *Lancet (London, England)*. 2020 Mar 11.
- 28 Moher D, Liberati A, Tetzlaff J, Altman DG. Preferred reporting items for systematic reviews and meta-analyses: the PRISMA statement. *Annals of internal medicine*. 2009;151: 264-9.
- 29 Stang A. Critical evaluation of the Newcastle-Ottawa scale for the assessment of the quality of nonrandomized studies in meta-analyses. *European journal of epidemiology*. 2010 Sep;25: 603-5.
- 30 Higgins JP, Thompson SG, Deeks JJ, Altman DG. Measuring inconsistency in meta-analyses. *BMJ: British Medical Journal*. 2003;327: 557.
- 31 Egger M, Smith GD, Schneider M, Minder C. Bias in meta-analysis detected by a simple, graphical test. *Bmj*. 1997;315: 629-34.
- 32 Xu L, Liu J, Lu M, Yang D, Zheng X. Liver injury during highly pathogenic human coronavirus infections. *Liver international : official journal of the International Association for the Study of the Liver*. 2020 Mar 14.
- 33 Chang HL, Chen KT, Lai SK, et al. Hematological and biochemical factors predicting SARS fatality in Taiwan. *Journal of the Formosan Medical Association = Taiwan yi zhi*. 2006 Jun;105: 439-50.
- 34 Saad M, Omrani AS, Baig K, et al. Clinical aspects and outcomes of 70 patients with Middle East respiratory syndrome coronavirus infection: a single-center experience in Saudi Arabia. *International journal of infectious diseases : IJID : official publication of the International Society for Infectious Diseases*. 2014 Dec;29: 301-6.
- 35 Al-Hameed F, Wahla AS, Siddiqui S, et al. Characteristics and Outcomes of Middle East Respiratory Syndrome Coronavirus Patients Admitted to an Intensive Care Unit in Jeddah, Saudi Arabia. *Journal of intensive care medicine*. 2016 Jun;31: 344-8.
- 36 Assiri A, Al-Tawfiq JA, Al-Rabeeh AA, et al. Epidemiological, demographic, and clinical characteristics of 47 cases of Middle East respiratory syndrome coronavirus disease from Saudi Arabia: a descriptive study. *The Lancet Infectious diseases*. 2013 Sep;13: 752-61.
- 37 Huang Y, Zhou H, Yang R, Xu Y, Feng X, Gong P. Clinical characteristics of 36 non-survivors with COVID-19 in Wuhan, China. *medRxiv*. 2020.

- 38 Zhang B, Zhou X, Qiu Y, et al. Clinical characteristics of 82 death cases with COVID-19. medRxiv. 2020.
- 39 Chen N, Zhou M, Dong X, et al. Epidemiological and clinical characteristics of 99 cases of 2019 novel coronavirus pneumonia in Wuhan, China: a descriptive study. Lancet (London, England). 2020 Feb 15;395: 507-13.
- 40 Hoffmann M, Kleine-Weber H, Krüger N, Mueller MA, Drosten C, Pöhlmann S. The novel coronavirus 2019 (2019-nCoV) uses the SARS-coronavirus receptor ACE2 and the cellular protease TMPRSS2 for entry into target cells. BioRxiv. 2020.
- 41 Chai X, Hu L, Zhang Y, et al. Specific ACE2 expression in cholangiocytes may cause liver damage after 2019-nCoV infection. bioRxiv. 2020.
- 42 Banales JM, Huebert RC, Karlsen T, Strazzabosco M, LaRusso NF, Gores GJ. Cholangiocyte pathobiology. Nature Reviews Gastroenterology & Hepatology. 2019;16: 269-81.
- 43 Liu J, Li S, Liu J, et al. Longitudinal characteristics of lymphocyte responses and cytokine profiles in the peripheral blood of SARS-CoV-2 infected patients. 2020.
- 44 Channappanavar R, Fehr AR, Vijay R, et al. Dysregulated type I interferon and inflammatory monocyte-macrophage responses cause lethal pneumonia in SARS-CoV-infected mice. Cell host & microbe. 2016;19: 181-93.
- 45 Channappanavar R, Perlman S. Pathogenic human coronavirus infections: causes and consequences of cytokine storm and immunopathology. Seminars in immunopathology. 2017 Jul;39: 529-39.
- 46 Xu Z, Shi L, Wang Y, et al. Pathological findings of COVID-19 associated with acute respiratory distress syndrome. The Lancet respiratory medicine. 2020.
- 47 Stebbing J, Phelan A, Griffin I, et al. COVID-19: combining antiviral and anti-inflammatory treatments. The Lancet Infectious diseases. 2020 Apr;20: 400-2.
- 48 Little P. Non-steroidal anti-inflammatory drugs and covid-19. Bmj. 2020 Mar 27;368: m1185.
- 49 Gordon CJ, Tchesnokov EP, Feng JY, Porter DP, Gotte M. The antiviral compound remdesivir potently inhibits RNA-dependent RNA polymerase from Middle East respiratory syndrome coronavirus. The Journal of biological chemistry. 2020 Feb 24.
- 50 Fan Z, Chen L, Li J, et al. Clinical Features of COVID-19-Related Liver Damage. Available at SSRN 3546077. 2020.
- 51 Yu Y, Mao Y, Chen C. Guidelines for the management of drug-induced liver injury. J Clin Hepatol. 2015;31: 1752-69.

## Figure legends

Figure 1. Flow chart of study selection.

Figure 2. Forest plot for the association between serum levels of AST and severity of COVID-19 infection using random-effects model.

Figure 3. Forest plot for the association between serum levels of ALT and severity of COVID-19 infection using random-effects model.

Figure 4. Forest plot for the association between serum levels of total Bilirubin and severity of COVID-19 infection using random-effects model.

Figure 5. Forest plot for the association between serum levels of Albumin and severity of COVID-19 infection using random-effects model.



Table 1. Characteristics of studies included in the meta-analysis.

Authors (year)	Design of study	Country	Mean age (y)	Sample size	Sex	COVID-19 <sup>a</sup> detection	Serum levels in severe cases (mean±SD)	Serum levels in mild cases (mean±SD)
<b>Chen G et al. (2020)</b>	Retrospective	China	56.50	21 Severe cases: 11 Mild cases: 10	F/M	real-time RT-PCR	ALT: 42.00±12.96 AST: 47.00±34.44 Bilirubin: 8.80±1.92 Albumin: 29.60±3.25	ALT: 16.00±6.29 AST: 24.00±3.70 Bilirubin: 7.80±2.29 Albumin: 37.20±2.22
<b>Chen T et al. (2020)</b>	Retrospective	China	59.50	274 Severe cases: 113 Mild cases: 161	F/M	real-time RT-PCR	ALT: 28.00±21.48 AST: 45.00±26.66 Bilirubin: 12.60±4.40 Albumin: 30.10±3.77	ALT: 20.00±12.74 AST: 25.00±9.85 Bilirubin: 8.40±4.00 Albumin: 36.30±4.29
<b>Deng Y et al. (2020)</b>	Retrospective	China	54.50	225 Severe cases: 109 Mild cases: 116	F/M	real-time RT-PCR	ALT: 22.00±14.07 AST: 34.00±14.81	ALT: 18.70±13.20 AST: 22.00±10.44
<b>Gao Y et al. (2020)</b>	Retrospective	China	44.08	43 Severe cases: 15 Mild cases: 28	F/M	real-time RT-PCR	ALT: 27.00±14.81 AST: 27.80±11.42	ALT: 24.50±16.29 AST: 33.21±18.24
<b>Huang C et al. (2020)</b>	Retrospective	China	49.00	41 Severe cases: 13 Mild cases: 28	F/M	real-time RT-PCR	ALT: 49.00±63.70 AST: 44.00±29.62 Bilirubin: 14.00±15.55	ALT: 27.00±15.18 AST: 34.00±12.22 Bilirubin: 10.80±2.14
<b>Jin X et al. (2020)</b>	Retrospective	China	45.61	651 Severe cases: 74 Mild cases: 577	F/M	real-time RT-PCR	ALT: 25.00±16.82 AST: 29.35±13.14 Bilirubin: 10.00±4.92 Albumin: 40.13±4.92	ALT: 21.50±13.18 AST: 24.40±9.62 Bilirubin: 9.60±4.51 Albumin: 41.50±3.80
<b>Liu W et al. (2020)</b>	Retrospective	China	51.50	78 Severe cases: 11 Mild cases: 67	F/M	real-time RT-PCR	ALT: 17.40±22.22 AST: 21.60±24.88 Albumin: 36.62±6.60	ALT: 18.50±11.25 AST: 20.00±12.59 Albumin: 41.27±4.55
<b>Mo P et al. (2020)</b>	Retrospective	China	53.50	155 Severe cases: 85 Mild cases: 70	F/M	real-time RT-PCR	ALT: 28.00±18.51 AST: 37.00±29.62 Albumin: 36.00±5.92	ALT: 20.00±13.33 AST: 32.00±11.11 Albumin: 39.00±4.44
<b>Pan L et al. (2020)</b>	Retrospective	China	52.91	204 Severe cases: 103 Mild cases: 101	F/M	real-time RT-PCR	ALT: 42.24±43.83 AST: 35.12±26.58 Bilirubin: 13.83±12.03 Albumin: 36.16±6.49	ALT: 29.53±23.58 AST: 27.48±23.98 Bilirubin: 13.46±8.11 Albumin: 35.84±5.63
<b>Qian GQ et al. (2020)</b>	Retrospective	China	57.50	91 Severe cases: 9 Mild cases: 82	F/M	real-time RT-PCR	ALT: 19.90±8.88 AST: 27.00±2.40 Albumin: 38.55±2.16	ALT: 18.00±11.85 AST: 21.00±8.88 Albumin: 40.20±3.25
<b>Qu R et al. (2020)</b>	Retrospective	China	54.72	30 Severe cases: 3 Mild cases: 27	F/M	real-time RT-PCR	ALT: 36.00±19.52 AST: 45.33±12.90	ALT: 33.59±24.54 AST: 43.56±21.03
<b>Ruan Q et al. (2020)</b>	Retrospective	China	58.50	150 Severe cases: 68 Mild cases: 82	F/M	real-time RT-PCR	Bilirubin: 18.10±10.70 Albumin: 28.80±3.80	Bilirubin: 12.80±6.80 Albumin: 32.70±3.80
<b>Wan S et al. (2020)</b>	Retrospective	China	50.00	135 Severe cases: 40 Mild cases: 95	F/M	real-time RT-PCR	ALT: 26.60±13.92 AST: 33.60±13.70 Bilirubin: 9.80±5.77	ALT: 21.70±16.37 AST: 22.40±10.07 Bilirubin: 8.60±6.22

							Albumin: 36.00±4.07	Albumin: 49.90±4.59
<b>Wang D et al. (2020)</b>	Retrospective	China	58.50	138 Severe cases: 36 Mild cases: 102	F/M	real-time RT-PCR	ALT: 35.00±28.14 AST: 52.00±29.62 Bilirubin: 11.50±6.66	ALT: 23.00±15.55 AST: 29.00±12.59 Bilirubin: 9.30±3.40
<b>Wang Z et al. (2020)</b>	Retrospective	China	53.75	69 Severe cases: 14 Mild cases: 55	F/M	real-time RT-PCR	ALT: 31.50±21.48 AST: 40.50±28.14	ALT: 24.00±17.77 AST: 26.00±13.33
<b>Wu C et al. (2020)</b>	Retrospective	China	53.25	201 Severe cases: 84 Mild cases: 117	F/M	real-time RT-PCR	ALT: 35.00±22.96 AST: 38.00±16.66 Bilirubin: 12.90±5.59 Albumin: 30.40±4.59	ALT: 27.00±17.40 AST: 30.00±10.74 Bilirubin: 10.50±3.74 Albumin: 33.70±3.96
<b>Yang X et al. (2020)</b>	Retrospective	China	58.25	52 Severe cases: 32 Mild cases: 20	F/M	real-time RT-PCR	Bilirubin: 19.50±11.60	Bilirubin: 13.10±4.30
<b>Zhang X et al. (2020)</b>	Retrospective	China	40.77	645 Severe cases: 573 Mild cases: 72	F/M	real-time RT-PCR	ALT: 29.37±25.71 AST: 30.08±20.37 Bilirubin: 11.26±8.04 Albumin: 41.02±4.47	ALT: 25.53±19.96 AST: 25.67±15.52 Bilirubin: 9.11±4.86 Albumin: 42.53±4.70
<b>Zhou B et al. (2020)</b>	Retrospective	China	65	34 Severe cases: 8 Mild cases: 26	F/M	real-time RT-PCR	ALT: 49.00±34.07 AST: 44.00±16.29	ALT: 34.00±29.62 AST: 32.00±14.81
<b>Zhou F et al. (2020)</b>	Retrospective	China	60.50	191 Severe cases: 54 Mild cases: 137	F/M	real-time RT-PCR	ALT: 40.00±20.00 Albumin: 29.10±3.55	ALT: 27.00±18.51 Albumin: 33.60±4.29

Abbreviations: <sup>a</sup>COVID-19: Coronavirus diseases 2019



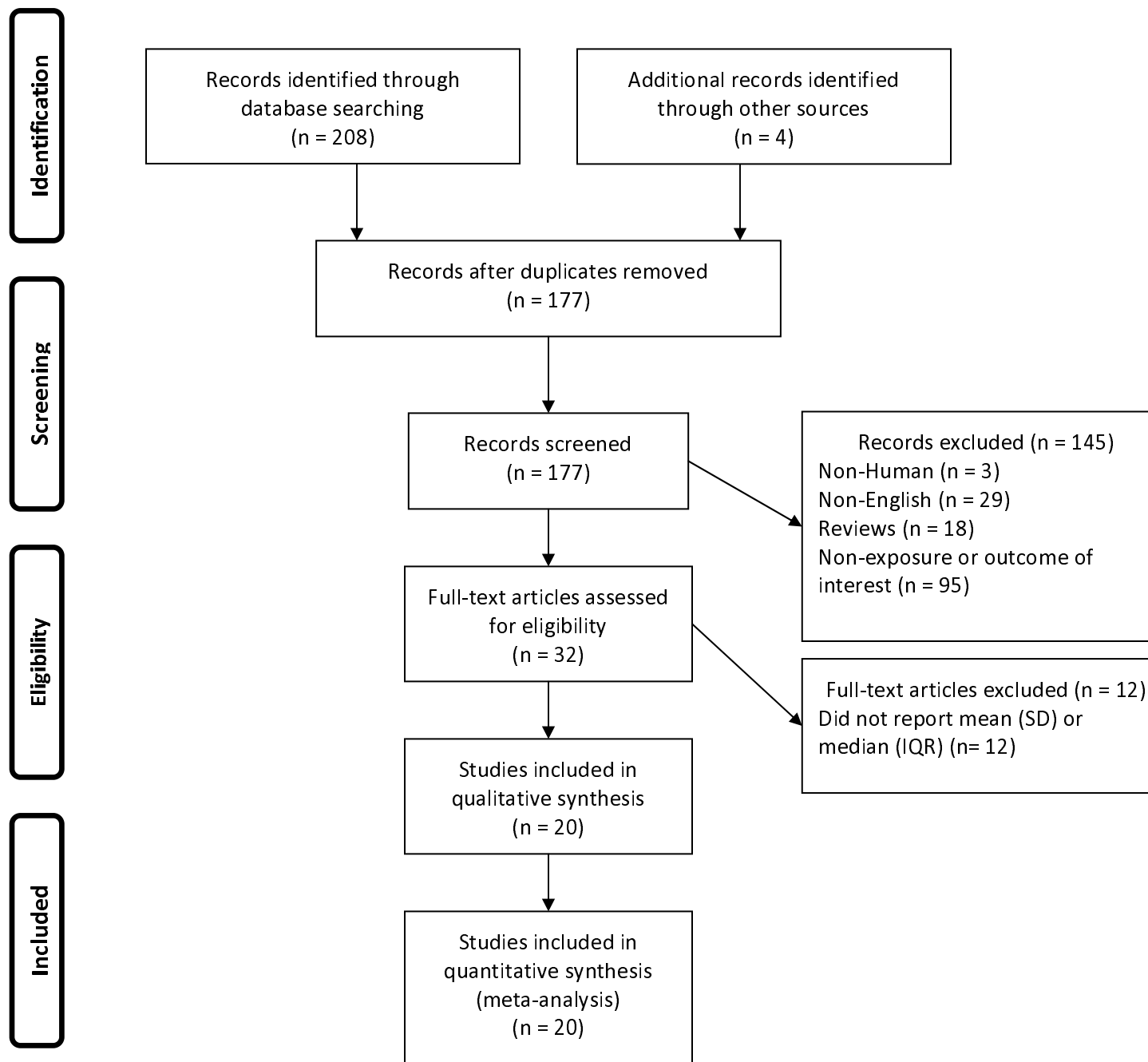


Figure 1. Flow chart of study selection.

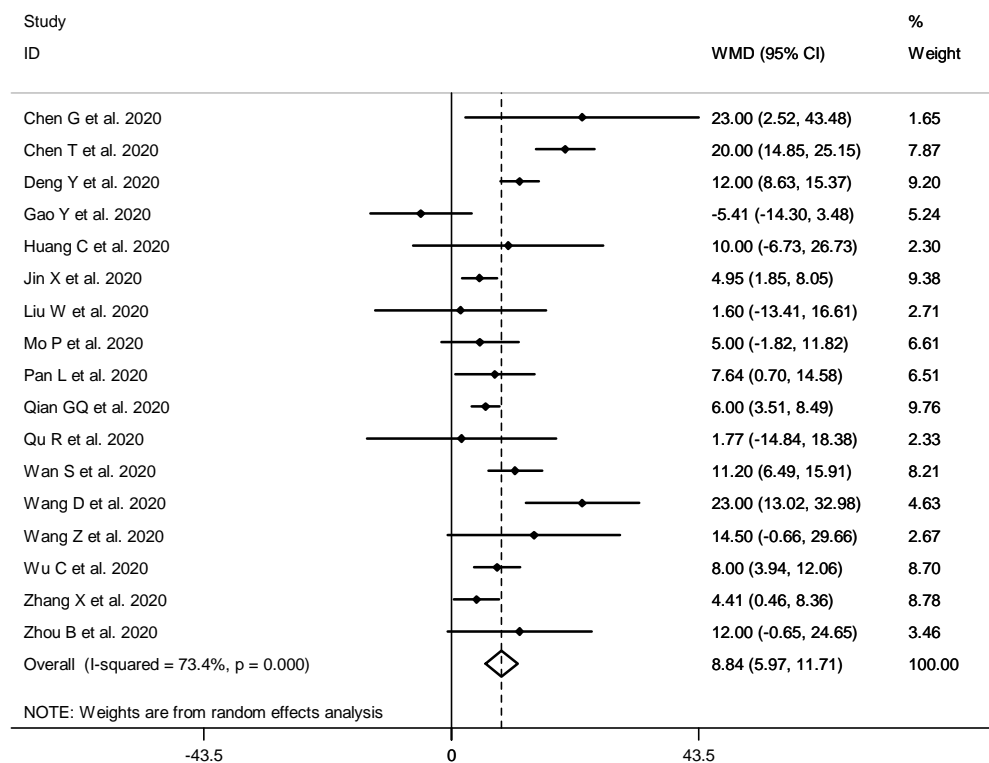


Figure 2. Forest plot for the association between serum levels of AST and severity of COVID-19 infection using random-effects model.

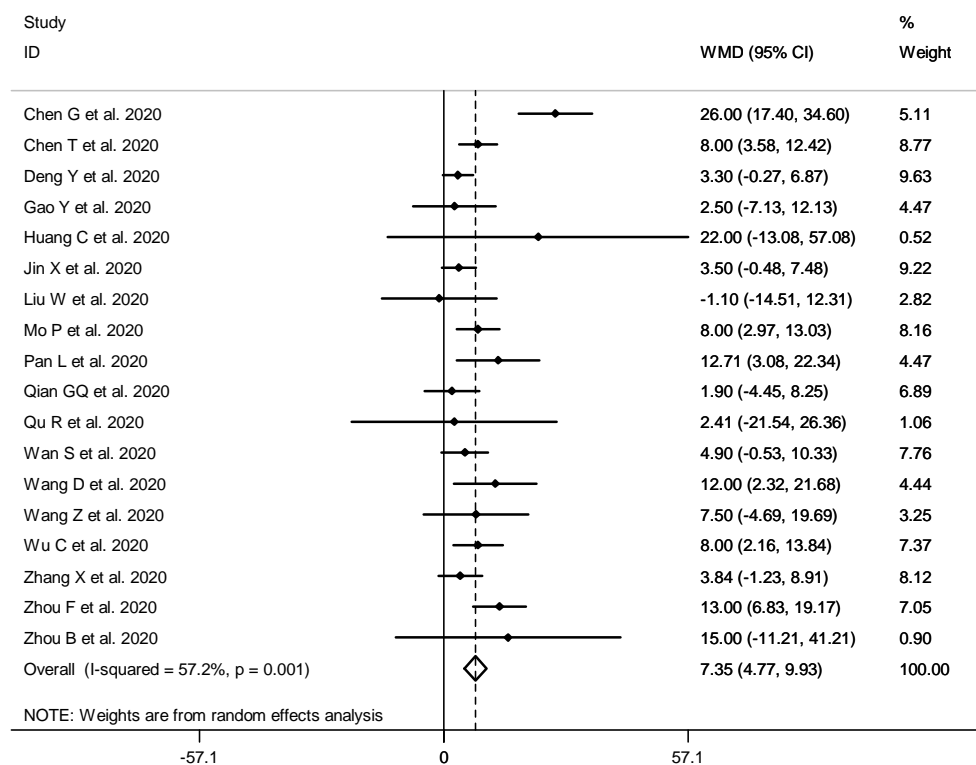


Figure 3. Forest plot for the association between serum levels of ALT and severity of COVID-19 infection using random-effects model.

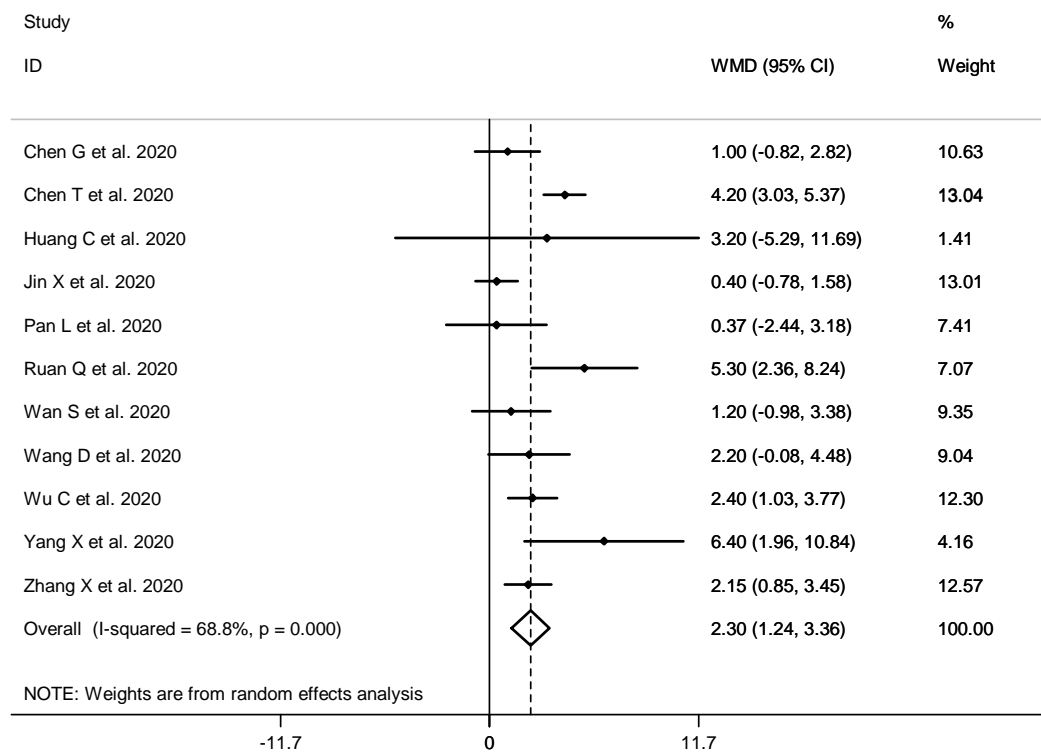


Figure 4. Forest plot for the association between serum levels of total Bilirubin and severity of COVID-19 infection using random-effects model.

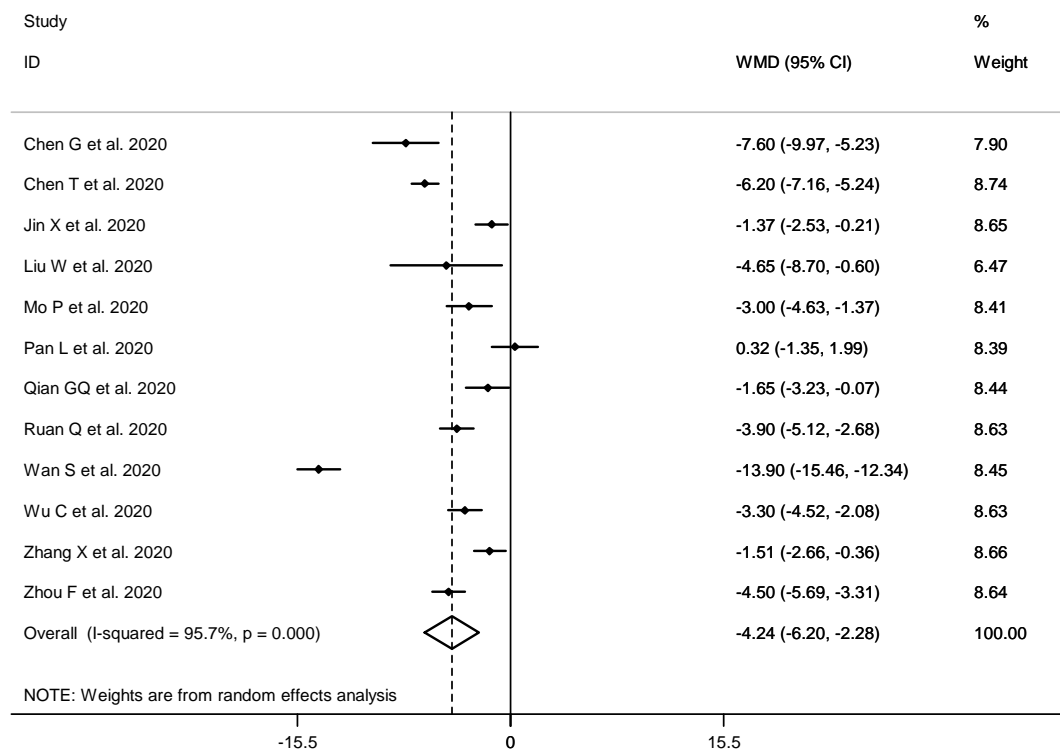


Figure 5. Forest plot for the association between serum levels of Albumin and severity of COVID-19 infection using random-effects model.