

1 **Blood glucose is a representative of the clustered indicators of**
2 **multi-organ injury for predicting mortality of COVID-19 in Wuhan,**
3 **China**

4 Jin-Kui Yang MD, PhD¹✉#, Jian-Min Jin MD, PhD^{2,3} ✉#, Shi Liu, MD³✉, Peng Bai,
5 MD^{2,3}, Wei He, MD^{4,3}, Fei Wu, MD³, Xiao-Fang Liu, MD, PhD², De-Min Han MD,
6 PhD⁵

7 ¹Department of Endocrinology, Beijing Tongren Hospital, Capital Medical University, Beijing
8 100730, China. ✉Electronic address: jkyang@ccmu.edu.cn

9 ²Department of Respiratory and Critical Care Medicine, Beijing Tongren Hospital, Capital
10 Medical University, Beijing 100730, China. ✉Electronic address: jinjianmin1972@sina.com

11 ³Department of Internal Medicine, Union Hospital, Tongji Medical College, Huazhong University
12 of Science and Technology, Wuhan 430022, China.

13 ⁴Department of Critical Care Medicine, Beijing Tongren Hospital, Capital Medical University,
14 Beijing 100730, China. ✉Electronic address: 1455019296@qq.com

15 ⁵Department of otolaryngology and head surgery, Beijing Tongren Hospital, Capital Medical
16 University, Beijing 100730, China.

17 # These authors contributed equally to this paper.

18 ✉Address correspondence and reprint requests to

19 Professor Jin-Kui YANG, Department of Medicine, Beijing Tongren Hospital, Capital Medical
20 University, Beijing 100730, China

21 Tel: +86-10-58268445

22 Fax: +86-10-65288736

23 Cell: +86-13911167636

24 jkyang@ccmu.edu.cn

25 or

26 Dr. Jian-Min Jin, Department of Critical Care Medicine, Beijing Tongren Hospital, Capital
27 Medical University, Beijing 100730, China.

28 Jian-Min Jin: jinjianmin1972@sina.com

29 or

30 Professor Shi Liu, Department of Internal Medicine, Union Hospital, Tongji Medical College,
31 Huazhong University of Science and Technology, Wuhan 430022, China.

32 E-mail: 1455019296@qq.com

1 **Abstract**

2 **OBJECTIVE** Most patients with Coronavirus Disease 2019 (COVID-19) were *Mild*
3 or *Moderate*. *Severe* patients progressed rapidly to *Critical* condition including
4 multi-organ failure and even death. Identification of early predictive factors is
5 urgently necessary to facilitate appropriate intensive care.

6 **METHODS** We included all patient admitted to Wuhan Union Hospital and treated
7 by the supportive medical team of Beijing Tongren Hospital as of March 20, 2020.
8 Indicators of injuries for multiple organs, including the heart, kidney and liver, and
9 glucose homeostasis were specifically analyzed for predicting primary outcomes (an
10 intensive care unit (ICU) or death).

11 **RESULTS** The data of 120 patients with a severity equal to or greater than *Moderate*,
12 discharged or died were extracted. After excluding patients with history of diabetes,
13 chronic heart, kidney, and liver disease, 69 patients were included in the final analysis.
14 There were 26 cases with primary outcomes including 16 deaths. Univariable analysis
15 indicated that fasting blood glucose (FBG), lactate dehydrogenase (LDH),
16 hydroxybutyrate dehydrogenase (HBDH), creatine kinase and creatinine were
17 associated with primary outcomes and death. Among patients with primary outcomes,
18 although FBG levels were much higher on admission, they dramatically decreased
19 subsequently, while in deceased patients they increased continuously. Multivariable
20 Cox regression indicated that $FBG \geq 7 \text{ mmol/L}$ was the only independent predictor for
21 death (HR = 3.75, 95% CI 1.26-11.15). Cluster analysis found more proximities of
22 FBG (at the time of admission) with LDH, HDDH or Creatinine (after 2-4 days of
23 hospitalization) ($r=0.43, 0.43$ and 0.50 , respectively, $P<0.01$ for all).

24 **Conclusions** Blood glucose is a representative of the clustered indicators of
25 multi-organ injury and earlier predictor for poor outcomes and death in the COVID
26 patients. As it is easy to perform for clinical practices and self-monitoring, glucose
27 testing will be much helpful for predicting poor outcomes to facilitate appropriate
28 intensive care.

1 **Introduction**

2 In early December 2019, an outbreak of a novel coronavirus (SARS-CoV-2)
3 pneumonia disease (COVID-19) occurred in Wuhan, China (1). Most patients with
4 COVID-19 were *Mild. Moderate* patients often experienced dyspnea after one week.
5 *Severe* patients progressed rapidly to critical condition including multi-organ failure
6 and even death. Identification of early predictive factors for poor outcomes is urgently
7 necessary to facilitate appropriate intensive care.

8 Although many case series studies have been published, the final clinical outcomes
9 in most of these series remained unknown at the time of publication. Most importantly,
10 clinical biochemical testing items were not uniform and without regular longitudinal
11 testing. Some of the most accessible biochemical parameters, such as blood glucose
12 were not assessed (2-5). Therefore, the estimation of risk factors for the severity and
13 mortality of COVID-19 is not very robust.

14 We have previously reported that hyperglycemia was commonly present in SARS
15 patients without prior history of diabetes and without using glucocorticoids, and was
16 an independent predictor for mortality in SARS patients (6). Binding of SARS
17 coronavirus to the ACE2 receptor may damage islets and causes acute diabetes (7), as
18 seen with *ACE2* gene knockout leading to diabetes in mice (8).

19 SARS-CoV-2 infection is reminiscent of the SARS-CoV outbreak in early 2003,
20 because both viruses attack cells via the same ACE2 receptor (9). In this observational
21 cohort study, we aim to explore whether some organ damage including
22 insulin-secreting pancreatic islet was already occurred at an early stage and hereby
23 increased the risk of mortality later.

24 **Methods**

1 **Participants**

2 This retrospective cohort study included consecutive COVID-19 adult inpatients (≥ 18
3 years old) admitted to Wuhan Union Hospital (Wuhan, China) and treated by the
4 supportive medical team of Beijing Tongren Hospital (Beijing, China) from January
5 29, 2020, to March 20, 2020. Wuhan Union Hospital was assigned responsibility for
6 the treatments of severe COVID-19 patients by the Wuhan government. Therefore,
7 there are no mild COVID-19 patient and a uniformed protocol of clinical practices
8 was used in this cohort.

9 Respiratory specimens were collected by the local center for disease control and
10 prevention (CDC) and then shipped to designated authoritative laboratories to detect
11 SARS-CoV-2. The presence of SARS-CoV-2 in respiratory specimens was detected
12 by real-time RT-PCR methods. The RT-PCR assay was conducted as per the protocol
13 established by the World Health Organization (WHO).

14 For the identification of indicators of early multi-organ injury for predicting poor
15 outcomes, patients with a history of chronic organ damage, including heart
16 disease(myocardial infarction and heart failure), kidney disease (maintenance dialysis
17 or renal transplantation), liver disease (liver cirrhosis) or insulin-secreting pancreatic
18 islet disease (diabetes) were excluded. Patients who received glucocorticoid treatment
19 were also excluded to avoid glucocorticoid-induced diabetes. The clinical outcomes
20 including an intensive care unit (ICU) or in-hospital death were monitored up to
21 March 24, 2020, the final date of follow-up.

22 The Research Ethics Commission of Beijing Tongren Hospital, Capital Medical
23 University (TRECKY2020-013) approved the study and the Ethics Commission
24 waived the requirement for informed consent.

1 **Data collection**

2 Demographic, clinical, laboratory and outcome data were extracted from the
3 electronic hospital information system using a standardized form. All medical data
4 were checked by two medical doctors (JMJ and PB) and the leader author (JKY)
5 adjudicated any different interpretation between the two medical doctors.

6 **Definitions**

7 Diagnosis and clinical classification criteria and treatment plan (version 6.0) of
8 COVID-19 was launched by the National Health Committee of China
9 (<http://www.nhc.gov.cn/>). The clinical classification of severity is as follows: (1) *Mild*,
10 having only mild symptoms, imaging shows no pneumonia. (2) *Moderate*, with fever,
11 respiratory tract symptoms, and imaging shows pneumonia. (3) *Severe*, meet any of
12 the following signs: a) respiratory distress, respiratory rate ≥ 30 beats / min; b) in the
13 resting state, finger oxygen saturation $\leq 93\%$ arterial blood oxygen partial pressure
14 ($\text{PaO}_2/\text{oxygen concentration (FiO}_2) \leq 300\text{mmHg}$ (1mmHg = 0.133kPa). (4) *Critical*,
15 one of the following conditions: a) respiratory failure occurs and requires mechanical
16 ventilation; b) Shock occurs; c) ICU admission is required for combined organ failure.

17 **Immunohistochemical patterns of ACE2**

18 Lung, pancreas, heart, kidney and liver tissue was obtained from a 43-year-old
19 brain-dead organ donor after informed consent from his wife. The protocol was
20 approved by the ethics committee of Beijing Tongren Hospital, Capital Medical
21 University. Serial sections were made from each of the tissues, and ACE2
22 immunohistochemical staining was compared with negative controls. A qualified
23 pathologist interrelated the results of ACE2 expression.

24 **Statistical analysis**

1 Data were expressed as median (interquartile range (IQR)) or percentage, as
2 appropriate. Comparison of continuous data among different severity groups and
3 between the deceased and survivor groups were determined using a Kruskal-Wallis
4 test and Mann-Whitney U test, respectively. Chi-square (χ^2) test for trend and
5 two-group Chi-square tests or Fisher's exact tests were used for categorical variables
6 as appropriate. Proximity Matrix and Dendrogram of six measures as different organ
7 damage indicators were calculated and developed by Hierarchical cluster analysis. To
8 explore the risk factors associated with poor outcomes, univariate and multivariate
9 logistic regression models were used. To find the risk factors predicting in-hospital
10 death, univariate and multivariate Cox proportional hazard model were used to
11 calculated hazard ratio (HR). Considering the relatively small number of poor
12 outcomes and deaths in this study and to avoid overfitting in the model, age, gender,
13 and five variables indicating different organs damage were chosen for multivariable
14 analysis. Kaplan–Meier survival curves and the log-rank test were used for testing the
15 survival between normal and abnormal indicators. SPSS for Windows 17.0 and
16 Graphpad prism 7.0 software were used for statistical analysis, with statistical
17 significance set at 2-sided $P < 0.05$.

18 **Results**

19 *Demographic and clinical characteristics*

20 A total of 120 consecutive COVID-19 adult inpatients (≥ 18 years old) were admitted
21 to Wuhan Union Hospital (Wuhan, China) and treated by the supportive medical team
22 of Beijing Tongren Hospital (Beijing, China) from January 29, 2020 to March 20,
23 2020. Because Wuhan Union Hospital was assigned responsibility for the treatments
24 of severe COVID-19 patients by the Wuhan government, most patients were *Severe* or

1 *Critical*, some were *Moderate*, but none were *Mild* according to the guidance
2 provided by the Chinese National Health Commission. Exclusion criteria included:
3 still hospitalized patients as of March 24, 2020, patients with chronic organ damage
4 (history of myocardial infarction, heart failure, dialysis, renal transplant, cirrhosis,
5 diabetes), and patients missing basic medical information. Ultimately, 69 patients
6 were included in the final analysis.

7 Of the 69 patients, 23 were *Moderate*, 20 were *Severe*, and 26 were *Critical* based
8 on severity classification. There were 53 survivors and 16 deceased patients in this
9 study (Table 1). Of the deceased patients, the median (interquartile ranges, IQR)
10 period from symptom onset to death and the median (IQR) period from
11 hospitalization to death were 14 (10-22) days and 3 (3-7) days, respectively.

12 In this hospital-based cohort, the median age of the 69 patients was 61 years (IQR,
13 52 to 67). Older patients tend to be more serious (χ^2 test for trend, $p=0.024$), but no
14 significant difference of age was present between survivors and deceased patients
15 within hospitalized patients.

16 The ratio of male to female patients were relatively similar, with 49.3% males.
17 However, the proportion of males in survivors and deceased patients were 39.6% and
18 81.2%, respectively, suggestive that males may have higher mortality from
19 COVID-19 (relative risk (95% CI): 2.0 (1.28-3.02), χ^2 test, $P=0.004$).

20 Fever (89.9), cough (65.2%) and dyspnea (43.5%) were the most common
21 symptoms, while sputum (17.4%) and diarrhea (17.4%) were less common.

22 An increase in white blood cells and neutrophils, and decrease in lymphocytes and
23 platelets occurred in both *Critical* and deceased patients at the time of admission.
24 And these changes became more obvious at the time after 2-4 days of hospitalization.

1 A slight transient decrease in blood potassium and sodium ion levels was seen in
2 *Critical* patients. A persistent decrease of albumin and increase of globulin were
3 present in *Critical* and deceased patients ([Table 1](#)).

4 C-reactive protein was increased at the time of admission but dramatically and
5 significantly decreased to the normal range at the time after 2-4 days of
6 hospitalization in survivors. A persistent increase of C-reactive protein was present in
7 deceased patients ([Table 1](#)).

8 ***Indicators of multi-organ injury***

9 To investigate multi-organ injury caused by the virus, the ACE2 protein expression
10 profile was analyzed in tissues, including the lung, heart, liver, kidney, and pancreas
11 which was obtained from the organ donor. In the lung, ACE2 immunostaining was
12 abundant in epithelial cells of bronchioles and pulmonary alveoli. In the heart, it was
13 highly expressed in the myocardium. According to our previous study in the mouse
14 pancreas, ACE2 was strongly expressed in pancreatic endocrine islet(8). Indeed,
15 compared to the negative controls, ACE2 was intensely stained in the pancreatic
16 endocrine islets, but very weakly stained in pancreatic exocrine tissues. In the kidney,
17 ACE2 was strong in glomerular parietal epithelial cells and weak in the visceral
18 epithelial cells. Interestingly, ACE2 expression was negative in the liver. Moreover,
19 ACE2 was also negative in the endothelial lining of the hepatic sinusoids ([Figure 1A](#)).

20 Fasting blood glucose ([FBG](#)), lactate dehydrogenase ([LDH](#)), alanine
21 aminotransferase ([ALT](#)) and creatinine ([Cr](#)) were used as indicators for the relative
22 function of multiple organs (i.e., insulin-secreting pancreatic islet, heart, liver, and
23 kidney injury, respectively). In parallel with the expression profiles of ACE2 in
24 different organs, indicators of the relative function of multiple organs except the liver

1 can predict death. Kaplan-Meier analysis revealed a significantly higher in-hospital
2 death rate for patients with elevated indicators for relative multi-organ injury, i.e.,
3 FBG ≥ 7.0 mmol/L for the pancreatic islet, LDH ≥ 250 IU/L for the heart, Cr ≥ 97
4 μ mol/L for the kidney and ALT ≥ 40 IU/L for the liver (Figure 1B).

5 Indicators including creatine kinase (CK), MB isoenzyme of creatine kinase
6 (CK-MB), aspartate aminotransferase (AST), hydroxybutyrate dehydrogenase
7 (HBDH), alkline phosphatase (AKP), and blood urea nitrogen (BUN) were also tested
8 at the time of admission and during subsequent treatment. Indicators of cardiac injury,
9 including LDH, HBDH, CK, and CK-MB, were remarkably increased in *Critical* and
10 deceased patients. Kidney injury, indicated by BUN and Cr elevations, was observed
11 in deceased patients. Liver injury, indicated by ALT and AST levels, was not observed
12 at the time of admission and at the time after 2-4 days of hospitalization. (Table 1).

13 ***Longitudinal changes of the indicators***

14 FBG and LDH levels were much higher above the upper limit of normal value at the
15 time of admission and at the time after 2-4 days of hospitalization in the *Critical*
16 group, while FBG and LDH levels did not increase remarkably in *Severe* and
17 *Moderate* groups. However, Cr and ALT levels were not remarkably different among
18 *Moderate*, *Severe* and *Critical* groups (Figure 1C). To further find the predictive
19 values of these four indicators, a longitudinal case-control investigation was
20 conducted in *Critical* patients, considering that the in-hospital deaths happened only
21 in *Critical* patients in this cohort. The patients with test values for at least three time
22 points were selected in *Critical* patients. Because the median (IQR) period from
23 hospitalization to death was 3 (3-7) days and the clinical parameters were tested every
24 2-4 days, only 5 *Critical* patients who survived and 5 *Critical* patients who died were

1 compared. It is meaningful to find out that although FBG and LDH levels were much
2 higher above the upper limit of normal value at the time of admission, they
3 dramatically decreased to the normal range during subsequent treatment in *Critical*
4 patients who survived. However, of the patients who died, increases of FBG and LDH
5 levels continued (Figure 1D-E). These changing trends of Cr and ALT levels in
6 survived and deceased patients were not found (Figure 1F-G).

7 ***The independent indicators for poor outcomes***

8 In univariable Logistic regression analysis, odds of critical condition were higher in
9 patients with old age, elevated FBG, LDH, and HBDH (Figure 2A). In the
10 multivariable analysis, FBG (OR:6.54, 95%CI: 1.18-36.08) and HBDH (OR:6.54,
11 95%CI: 1.18-36.08) were independent risk factor of critical condition (Figure 2B).

12 Using the univariable Cox proportional hazards model, male sex (HR = 5.02, 95%
13 CI 1.43-17.62), elevated FBG (HR = 5.09, 95% CI 1.76-14.70), LDH (HR = 9.73, 95%
14 CI 1.28-73.7) and HBDH (HR = 3.81, 95% CI 1.23-11.85) were predictors for death
15 (Figure 2C). In the multivariable model, elevated FBG remained the only independent
16 predictor for death (HR = 3.75, 95% CI 1.26-11.15) (Figure 2D).

17 To interpret the difference of univariable and multivariable regression results which
18 suggested that these indicators were interdependent to each other, Hierarchical cluster
19 analysis of six indicators was performed. At the time of admission (a), significant
20 proximities of LDH (a) with HBDH (a) ($r=0.73$, $P<0.01$) and CK (a) with HBDH (a)
21 ($r=0.49$, $P<0.01$) were present. No significant proximities of FBG (a) with other
22 Variables (a), ALT(a) with other Variables (a) and Cr (a) with other Variables were
23 observed. These results suggested that some definite indicators for multi-organ failure
24 were independent. However, at the time after 2-4 days of hospitalization (b), more

1 significant proximities among Variables (b), especially FBG (b) with other Variables
2 (b) were found. These suggested that multi-organ injury might present at the same
3 time caused by the virus infection. Most interestingly, significant proximities of FBG
4 (a) (at the time of admission) with other Variables (b) (at the time after 2-4 days of
5 hospitalization) including LDH (b) ($r=0.43$, $P<0.01$), HDDH (b) ($r=0.43$, $P<0.01$), Cr
6 (b) ($r=0.50$, $P<0.01$) were present. Therefore, abnormal glucose homeostasis indicated
7 the relative dysfunction of pancreatic islet occurred earlier than that of other organs
8 (Table 2). The dendrogram of Variables (b) (at the time after 2-4 days of
9 hospitalization) suggested more proximity of FBG with LDH/HBDH equations than
10 the other equations. Heart injury indicated by LDH/HBDH and relative islet
11 dysfunction indicated by FBG was in a cluster solution if setting distance at 15
12 according to the Hierarchical cluster analysis (Figure 2E). This suggests that FBG and
13 LDH/HBDH are interdependent to each other. Furthermore, results of the cluster
14 analysis can interpret why the multivariable regression results indicated that FBG is
15 the only independent predictor for in-hospital death.

16 **Conclusions**

17 In this study, for the first time, we identified early indicators of multi-organ injury for
18 predicting severity and mortality in patients with COVID-19. Elevation of FBG, LDH,
19 HBDH, CK and Cr were associated with higher odds of critical condition and a higher
20 hazards ratio of in-hospital death. In particular, Hierarchical cluster analysis suggested
21 that some definite indicators for multi-organ failure were interdependent to each other,
22 indicating that multi-organ injury was present at the same time caused by the virus
23 infection. Multivariable regression results indicated that FBG is the only independent
24 predictor for in-hospital death.

1 The multi-organ nature of COVID-19 or SARS-CoV-2 infection has been
2 demonstrated in a latest autopsy studies (10). Moreover, an autopsy study on 3 cases
3 of SARS indicate that some lesions observed in heart, kidney, pancreas may have
4 existed before the hospitalization (11). We found that the SARS-CoV-2 receptor,
5 ACE2 is highly expressed in multiple organs including the lung, the heart, the kidney
6 and the pancreatic islet.

7 Acute heart injury (AHI) such as acute myocarditis is common in patients with
8 viral infection, such as adenovirus, herpesvirus and enterovirus (12). Since carditis
9 associated with coronavirus infection was first reported in 1980 (13), growing
10 evidence shows that coronavirus is also a pathogen for AHI that should not be ignored.
11 Early in 2003, we reported that SARS-CoV may cause AHI and elevated LDH is an
12 independent predictor for in-hospital death in SARS patients (7). A report from Saudi
13 Arabia indicated that Middle East Respiratory Syndrome coronavirus (MERS-CoV)
14 could cause acute myocarditis and acute-onset heart failure (14). The latest case report
15 described cardiac involvement in a patient with COVID-19 (15). Two myocardial
16 enzymes, LDH and HBDH exist in myocardia and release into blood flow once the
17 myocardial injury happens. In this study, we found that both high LDH and HBDH on
18 admission were predictor for severity and in-hospital death.

19 Acute kidney injury (AKI), same as AHI, is also common in patients with virus
20 infection, such as Parvovirus B19, Hanta, Ebola, and Dengue virus infection (16).
21 Coronavirus associated AKI was reported in patients with MDRS (17). In the previous
22 report, we found that SARS-CoV may cause AKI and elevated Cr is an independent
23 predictor for in-hospital death in SARS patients (7). In this study, we found that
24 elevation of both BUN and Cr were present in *Critical* and deceased patients. High Cr

1 on admission were predictor for severity and in-hospital death in COVID-19 patients.

2 Acute liver injury (ALI) was reported in SARS patients, which was manifested
3 with mild elevation of ALT/AST levels. Decreased serum albumin levels was present
4 in some patients. However, ALT and AST was not an independent predictor of poor
5 outcome (18). A number of studies have shown that elevated liver enzymes and
6 decreased albumin levels were present in patients with MERS (19). Case reports
7 suggested that patients with severe COVID-19 seem to have higher rates of liver
8 dysfunction (20). However, few studies have shown the liver enzymes were
9 independent predictor for poor outcome and mortality in COVID-19 patients. In this
10 study, although mild decrease of albumin was found in *Critical* and deceased patients,
11 significant differences of liver enzymes were not found between survivors and
12 deceased patients in this cohort. We propose that liver injury may not be a direct
13 damage caused by the virus, because we found that expression of the SARS-CoV-2
14 receptor, ACE2 in the liver is very low.

15 Acute pancreatic islet injury (AII) caused by virus infection has scarcely been
16 reported. Subacute islet injury caused by virus infection has been widely reported in
17 type 1 diabetes, which is an autoimmune disease characterized by a long-term loss of
18 pancreatic islet β -cells. However, serological evidence of infection and isolation of
19 viruses from the pancreas have been reported in a few cases of recently diagnosed
20 acute diabetes (21). A case-control study indicated that high FBG is an independent
21 predictor for severity of H1N1 pneumonia. In this study, FBG was remarkably
22 increased in patients with H1N1 pneumonia than in patients with non-H1N1
23 pneumonia (8.3 vs. 6.2 mmol/L). Moreover, compensative rise in insulin, in
24 corresponding with high FBG was not found; instated, islet β -cells function indicated

1 by HOMA- β index is relatively lower (103 vs. 134) (22).

2 It is reasonable to think that FBG elevation maybe caused by “Stress
3 hyperglycemia” during acute illness in patients with COVID-19. However, severe
4 hyperglycemia is related to both insulin secretion and insulin resistance. Insulin
5 resistance caused by metabolic, hormonal, and cytokine changes associated with the
6 illness demands a corresponding rise in insulin output in order to maintain normal
7 glycemia. Only when the compensation is lost will blood glucose increase
8 significantly (23, 24). Therefore, relative dysfunction of pancreatic islet insulin
9 secretion caused by the virus infection maybe the main reason of severe
10 hyperglycemia in patients with COVID.

11 Additionally, consistent with many previous reports, male gender, changes of blood
12 cell counting, persistent increase of C-reactive protein on admission and during
13 subsequent treatment were associated with higher poor outcomes in this study.

14 There are several limitations in our study. First, due to the critical condition of the
15 disease, laboratory examinations were performed according to the clinical care needs
16 of the patient, longitudinal testing interval was not firm and were performed every 2-4
17 days. Laboratory data at some points is missing. Second, we only assessed
18 multi-organ injury from the perspective of some most accessible biochemical
19 parameters. It would have produced better results if some more specific
20 indicators such as echocardiography, glomerular filtration rate and serum insulin
21 levels were also measured in this study, and if we could assess some organ
22 injury-specific mortality. Last but not least, interpretation might be limited by the
23 sample size of the study. However, by including all patients of department of critical
24 care medicine in the designated hospitals, we believe our study population of

1 COVID-19 is a representative of patients treated in Wuhan.

2 In summary, except pneumonia, multi-organ injury including the heart, kidney, and
3 possibly pancreatic islet injuries was already occurred at an early stage and thereby
4 increased the risk of mortality later in patients with COVID-19. These multi-organ
5 injury indicators including LDH, HBDH, CK, Cr and FBG were associated with
6 higher odds of primary outcomes and death. However, these indicators are clustered
7 interdependent to each other, indicating that the multi-organ damage happened at the
8 same time as the infection. Among them, FBG is a representative of the clustered
9 indicators of multi-organ injury for predicting mortality of COVID-19. As it is easy to
10 perform for clinical practices and self-monitoring, FBG testing will be much helpful
11 for predicting critical condition to facilitate appropriate intensive care.

12

13 **Article Information**

14 **Funding.** This study was funded by the National Key R&D Program of China
15 (2017YFC0909600).

16 **Duality of Interest.** No potential conflicts of interest relevant to this article were
17 reported.

18 **Author Contributions.** J.K.Y. designed and performed the analysis and wrote the manuscript.
19 J.M.J., P.B., F.G., W.H., F.W., and S.L. collected the epidemiological and clinical data and
20 processed statistical data. J.K.Y., J.M.J. and D.M.H. revised the final manuscript. J.K.Y., J.M.J.
21 and S.L. are the guarantors of this work and, as such, had full access to all the data in the study
22 and take responsibility for the integrity of the data and the accuracy of the data analysis.

23

24 **References**

25 1. Zhu N, Zhang D, Wang W, Li X, Yang B, Song J, et al. A Novel Coronavirus from Patients
26 with Pneumonia in China, 2019. *N Engl J Med.* 2020.

- 1 2. Huang C, Wang Y, Li X, Ren L, Zhao J, Hu Y, et al. Clinical features of patients infected with
2 2019 novel coronavirus in Wuhan, China. *Lancet*. 2020;395(10223):497-506.
- 3 3. Chen N, Zhou M, Dong X, Qu J, Gong F, Han Y, et al. Epidemiological and clinical
4 characteristics of 99 cases of 2019 novel coronavirus pneumonia in Wuhan, China: a
5 descriptive study. *Lancet*. 2020;395(10223):507-13.
- 6 4. Wang D, Hu B, Hu C, Zhu F, Liu X, Zhang J, et al. Clinical Characteristics of 138
7 Hospitalized Patients With 2019 Novel Coronavirus-Infected Pneumonia in Wuhan, China.
8 *JAMA*. 2020.
- 9 5. Xu XW, Wu XX, Jiang XG, Xu KJ, Ying LJ, Ma CL, et al. Clinical findings in a group of
10 patients infected with the 2019 novel coronavirus (SARS-Cov-2) outside of Wuhan, China:
11 retrospective case series. *BMJ*. 2020;368:m606.
- 12 6. Yang JK, Feng Y, Yuan MY, Yuan SY, Fu HJ, Wu BY, et al. Plasma glucose levels and diabetes
13 are independent predictors for mortality and morbidity in patients with SARS. *Diabet Med*.
14 2006;23(6):623-8.
- 15 7. Yang JK, Lin SS, Ji XJ, and Guo LM. Binding of SARS coronavirus to its receptor damages
16 islets and causes acute diabetes. *Acta Diabetol*. 2010;47(3):193-9.
- 17 8. Niu MJ, Yang JK, Lin SS, Ji XJ, and Guo LM. Loss of angiotensin-converting enzyme 2 leads
18 to impaired glucose homeostasis in mice. *Endocrine*. 2008;34(1-3):56-61.
- 19 9. National Health Commission of PRC: Feb 23: Daily briefing on novel coronavirus cases in
20 China. http://ennhcgovcn/2020-02/23/c_76779htm.
- 21 10. Yao XH, Li TY, He ZC, Ping YF, Liu HW, Yu SC, et al. [A pathological report of three
22 COVID-19 cases by minimally invasive autopsies]. *Zhonghua Bing Li Xue Za Zhi*.
23 2020;49(0):E009.
- 24 11. Lang Z, Zhang L, Zhang S, Meng X, Li J, Song C, et al. Pathological study on severe acute
25 respiratory syndrome. *Chin Med J (Engl)*. 2003;116(7):976-80.
- 26 12. Pollack A, Kontorovich AR, Fuster V, and Dec GW. Viral myocarditis--diagnosis, treatment
27 options, and current controversies. *Nat Rev Cardiol*. 2015;12(11):670-80.
- 28 13. Riski H, Hovi T, and Frick MH. Carditis associated with coronavirus infection. *Lancet*.
29 1980;2(8185):100-1.
- 30 14. Alhogbani T. Acute myocarditis associated with novel Middle east respiratory syndrome
31 coronavirus. *Ann Saudi Med*. 2016;36(1):78-80.
- 32 15. Inciardi RM, Lupi L, Zaccone G, Italia L, Raffo M, Tomasoni D, et al. Cardiac Involvement in
33 a Patient With Coronavirus Disease 2019 (COVID-19). *JAMA Cardiol*. 2020.
- 34 16. Prasad N, Novak JE, and Patel MR. Kidney Diseases Associated With Parvovirus B19, Hanta,
35 Ebola, and Dengue Virus Infection: A Brief Review. *Adv Chronic Kidney Dis*.
36 2019;26(3):207-19.
- 37 17. Mackay IM, and Arden KE. MERS coronavirus: diagnostics, epidemiology and transmission.
38 *Virology*. 2015;12:222.
- 39 18. Wu KL, Lu SN, Changchien CS, Chiu KW, Kuo CH, Chuah SK, et al. Sequential changes of
40 serum aminotransferase levels in patients with severe acute respiratory syndrome. *Am J Trop*
41 *Med Hyg*. 2004;71(2):125-8.
- 42 19. Xu L, Liu J, Lu M, Yang D, and Zheng X. Liver injury during highly pathogenic human
43 coronavirus infections. *Liver Int*. 2020.

- 1 20. Cui Y, Tian M, Huang D, Wang X, Huang Y, Fan L, et al. A 55-Day-Old Female Infant
2 infected with COVID 19: presenting with pneumonia, liver injury, and heart damage. *J Infect*
3 *Dis.* 2020.
- 4 21. Jaeckel E, Manns M, and Von Herrath M. Viruses and diabetes. *Ann N Y Acad Sci.*
5 2002;958:7-25.
- 6 22. Wang W, Chen H, Li Q, Qiu B, Wang J, Sun X, et al. Fasting plasma glucose is an
7 independent predictor for severity of H1N1 pneumonia. *BMC Infect Dis.* 2011;11:104.
- 8 23. Gupta D, Krueger CB, and Lastra G. Over-nutrition, obesity and insulin resistance in the
9 development of beta-cell dysfunction. *Curr Diabetes Rev.* 2012;8(2):76-83.
- 10 24. Dungan KM, Braithwaite SS, and Preiser JC. Stress hyperglycaemia. *Lancet.*
11 2009;373(9677):1798-807.
12

Table 1: Demography, clinical and laboratory parameters of patients with COVID-19

	All patients (n=69)	Severity			P value	Mortality		P value
		Moderate (n=23)	Severe (n=20)	Critical (n=26)		Survivor (n=53)	Deceased (n=16)	
Age—yrs	61 (52-67)	56 (47-64)	62 (55-67)	65 (57-71)	0.024 ‡	60 (51-67)	64 (57-68)	0.232†
Male sex—n (%)	34 (49.3)	9 (39.1)	8 (40.0)	16 (61.5)	0.111#	21(39.6)	13 (81.2)	0.003 !
Symptoms								
Fever—n (%)	62 (89.9)	18 (78.3)	19 (95.0)	25 (96.2)	0.041 #	47 (88.7)	15 (93.8)	0.340!
Cough—n (%)	45 (65.2)	13 (56.5)	13 (65.0)	19 (73.1)	0.225#	32 (60.4)	13 (81.3)	0.077!
Sputum—n (%)	12 (17.4)	5 (21.7)	4 (20.0)	3 (11.5)	0.341#	10 (18.9)	2 (12.5)	0.265!
Dyspnea—n (%)	30 (43.5)	7 (30.4)	7 (35.0)	16 (61.5)	0.026 #	22 (41.5)	8 (50.0)	0.188!
Fatigue—n (%)	26 (37.7)	8 (34.8)	6 (30.0)	12 (46.2)	0.397#	18 (34.0)	8 (50.0)	0.118!
Diarrhea—n (%)	12 (17.4)	2 (8.7)	5 (25.0)	5 (19.2)	0.350#	9 (17.0)	3 (18.8)	0.282!
From onset to hospitalization—days	12.0 (9.0-14.0)	13.0 (10.0,15.0)	11.5 (7.8,14.0)	12.0 (7.0,14.0)	0.273‡	13.0 (10.0,14.0)	11.5 (7.3,14.0)	0.348†
Haemoglobin—g/L	(a) 127 (116-139)	124 (117-137)	119 (110-143)	130 (121-147)	.477‡	125 (115-136)	131 (122-151)	.233†
	(b) 126 (116-140)	130 (113-141)	123 (115-134)	128 (118-143)	.704‡	124 (116-137)	137 (118-149)	.200†
Platelet count— $\times 10^9/L$	(a) 211(183-282)	215 (192-286)	215 (196-293)	205 (159-263)	.515‡	219 (193-290)	197 (146-234)	.067†
	(b) 232 (171-359)	258 (184-367)	316 (186-443)	189 (135-257)	.061‡	258 (185-385)	151 (132-190)	.002 †
White blood cell count— $\times 10^9/L$	(a) 6.2 (4.7-8.2)	5.7 (4.3-7.4)	5.9 (4.8-8.1)	7.7 (5.9-9.7)	.009 ‡	5.9 (4.6-7.6)	8.1 (6.3-9.5)	.002 †
	(b) 6.9 (4.8-9.0)	5.9 (4.7-8.7)	6.2 (4.1-8.5)	8.0 (5.9-10.4)	.076‡	6.0 (4.7-8.7)	8.7 (7.1-12.4)	.007 †
Neutrophil count— $\times 10^9/L$	(a) 4.5 (3.1-6.7)	3.3 (2.7-4.9)	4.2 (3.7-5.9)	6.7 (5.4-8.8)	.000 ‡	4.0 (3.0-5.9)	7.0 (5.6-8.4)	.000 †
	(b) 4.9 (3.4-7.6)	3.6 (2.9-5.8)	4.1 (2.7-6.0)	6.7 (4.9-8.5)	.005 ‡	4.2 (3.2-6.2)	7.8 (6.1-11.5)	.000 †
Lymphocyte count— $\times 10^9/L$	(a) 1.0 (0.7-1.4)	1.3 (0.9-1.7)	0.9 (0.7-1.4)	0.7 (0.4-1.1)	.000 ‡	1.0 (0.7-1.5)	0.6 (0.4-1.1)	.002 †
	(b) 1.1 (0.7-1.4)	1.3 (1.1-1.9)	1.1 (1.0-1.6)	0.7 (0.5-1.0)	.003 ‡	1.2 (1.0-1.6)	0.6 (0.3-0.7)	.000 †
Potassium—mmol/L	(a) 3.9 (3.5-4.3)	4.1 (3.9-4.4)	3.8 (3.5-4.5)	3.7 (3.2-4.0)	.025 ‡	3.9 (3.5-4.3)	3.9 (3.6-4.3)	.789†
	(b) 4.2 (3.8-4.5)	4.4 (4.2-4.8)	4.1 (3.8-4.5)	3.8 (3.7-4.3)	.084‡	4.2 (3.8-4.5)	4.0 (3.7-4.6)	.659†
Sodium—mmol/L	(a) 139 (137-142)	140 (138-142)	141 (138-143)	138 (135-141)	.078‡	140 (138-142)	137 (135-141)	.008 †
	(b) 139 (137-143)	140 (137-142)	141 (138-143)	138 (136-142)	.517‡	139 (138-142)	138 (135-143)	.335†
Chloride—mmol/L	(a) 104 (99-106)	105 (102-106)	104 (100-108)	103 (98-105)	.109‡	104 (100-106)	103 (98-106)	.136†

	(b)	103 (101-106)	102 (102-104)	104 (101-109)	103 (101-104)	.757‡	103 (101-107)	103 (101-104)	.701‡
Albumin—g/L	(a)	29 (27-34)	34 (30-39)	28 (26-31)	28 (25-30)	.001‡	30 (27-35)	28 (25-29)	.091‡
	(b)	29 (26-33)	33 (29-40)	30 (28-33)	26 (23-29)	.000‡	30 (27-33)	26 (22-28)	.001‡
Globulin—g/L	(a)	32 (29-36)	30 (26-34)	32 (30-38)	34 (30-39)	.027‡	31 (29-35)	36 (31-39)	.038‡
	(b)	33 (30-37)	30 (27-34)	32 (28-37)	35 (32-39)	.008‡	32 (29-36)	35 (32-38)	.079‡
C-reactive protein—mg/L	(a)	36 (5-77)	4 (1-36)	23 (7-65)	60 (47-100)	.000‡	31 (3-60)	80 (41-119)	.001‡
	(b)	8 (3-51) **	4 (2-7)	6 (3-10)	67 (28-104)	.000‡	6 (2-14) **	78 (51-105)	.000‡
Alanine aminotransferase—U/L	(a)	38 (24-52)	39 (21-49)	37 (24-55)	36 (27-52)	.641‡	37 (24-52)	38 (24-51)	.806‡
	(b)	30 (22-62)	32 (21-68)	31 (21-72)	38 (26-56)	.641‡	35 (22-69)	38 (26-56)	.912‡
Aspartate aminotransferase—U/L	(a)	33 (23-47)	23 (17-34)	35 (28-50)	35 (29-56)	.007‡	32 (20-47)	36 (29-83)	.067‡
	(b)	27 (21-46)	22 (18-30)	34 (22-45)	28 (22-54)	.108‡	25 (21-41)	34 (23-57)	.166‡
Alkaline phosphatase—U/L	(a)	57 (48-67)	55 (46-70)	55 (41-62)	61 (53-79)	.067‡	57 (47-66)	60 (50-88)	.224‡
	(b)	65 (54-80)	62 (51-72)	59 (50-80)	71 (58-133)	.105‡	61 (52-76)	74 (55-162)	.075‡
Lactate dehydrogenase—U/L	(a)	312 (204-483)	196 (137-251)	294 (242-384)	499 (354-587)	.000‡	260 (192-379)	544 (476-608)	.000‡
	(b)	267 (219-419)	207 (146-240)	246 (212-305)	425 (275-616)	.000‡	242 (206-283)	593 (425-875)	.000‡
Hydroxybutyrate dehydrogenase—U/L	(a)	253 (190-368)	161 (118-218)	252 (192-329)	387 (313-478)	.000‡	227 (172-316)	343 (334-526)	.000‡
	(b)	209 (147-282)	154 (132-192)	185 (148-220)	435 (243-687)	.000‡	186 (146-230)	474 (329-858)	.000‡
Creatine kinase—U/L	(a)	61 (47-143)	48 (36-66)	65 (41-122)	107 (54-275)	.007‡	56 (41-117)	116 (67-277)	.009‡
	(b)	47 (33-66)	47 (33-57)	35 (23-49)	55 (37-100)	.026‡	42 (28-57)	67 (49-133)	.003‡
Creatine kinase—MB—U/L	(a)	12 (9-19)	9 (7-12)	13 (9-21)	14 (10-23)	.006‡	11 (8-16)	17 (10-24)	.045‡
	(b)	10 (7-16)	8 (7-10)	9 (7-15)	12 (9-22)	.035‡	8 (7-13)	19 (11-24)	.008‡
Blood urea nitrogen—mmol/L	(a)	5.0 (3.4-6.7)	4.2 (3.3-5.5)	4.5 (2.9-6.9)	5.4 (4.0-7.7)	.158‡	4.4 (3.3-6.0)	6.4 (4.3-9.1)	.004‡
	(b)	5.0 (3.9-6.7)	4.4 (4.1-5.9)	4.4 (3.3-5.6)	5.8 (4.2-8.2)	.041‡	4.5 (3.5-5.4)	7.5 (5.3-10.1)	.001‡
Creatinine—μmol/L	(a)	66 (53-84)	64 (52-70)	61 (51-92)	70 (58-93)	.121‡	62 (52-73)	90 (68-101)	.000‡
	(b)	62 (53-81)	57 (51-69)	63 (53-82)	66 (54-86)	.572‡	59 (51-74)	79 (63-101)	.012‡
Fasting Blood Glucose—mmol/L	(a)	6.5 (5.7-7.6)	5.7 (5.3-6.5)	6.3 (5.6-6.8)	7.5 (6.4-8.7)	.000‡	6.1 (5.4-7.0)	7.4 (6.6-9.9)	.001‡
	(b)	6.1 (5.5-7.5)	5.8 (5.4-6.1)	5.6 (5.2-6.3)	6.9 (6.4-9.4)	.001‡	5.8 (5.3-6.6)	7.4 (6.6-10.7)	.000‡

Parameters tested **(a)** on admission and **(b)** after 2-4 days of hospitalization. Data are median (IQR) or n (%). P values were calculated by Kruskal-Wallis Test (‡), Mann-Whitney U test (†), χ^2 test (#), or Fisher's exact test(!), as appropriate for group comparison analyses. **: P<0.01, Kruskal-Wallis Test, admission vs. 2-4 days after hospitalization.

Table 2: Proximity Matrix of six multi-organ injury indicators by Hierarchical cluster analysis

		FBG (a)	LDH (a)	Cr (a)	CK (a)	HDDH (a)	ALT (a)
FBG (a) with Variables (a)	FBG (a)	1					
	LDH (a)	0.153	1				
	Cr (a)	0.135	0.240	1			
	CK (a)	0.067	0.236	0.011	1		
	HDDH (a)	0.224	**0.734	0.190	**0.488	1	
	ALT (a)	0.074	0.269	-0.075	0.075	0.211	1
		FBG (b)	LDH (b)	Cr (b)	CK (b)	HDDH (b)	ALT (b)
FBG (b) with Variables (b)	FBG (b)	1					
	LDH (b)	**0.576	1				
	Cr (b)	**0.383	0.274	1			
	CK (b)	0.167	0.331	0.119	1		
	HDDH (b)	**0.622	**0.883	0.140	**0.388	1	
	ALT (b)	0.075	**0.445	0.264	0.021	0.252	1
		FBG (a)	LDH (b)	Cr (b)	CK (b)	HDDH (b)	ALT (b)
FBG (a) with Variables (b)	FBG (a)	1					
	LDH (b)	**0.433	1				
	Cr (b)	**0.498	0.265	1			
	CK (b)	0.025	*0.328	0.113	1		
	HDDH (b)	**0.428	**0.881	0.128	**0.385	1	
	ALT (b)	0.099	**0.441	0.258	0.017	0.246	1

1 Parameters tested (a) on admission and (b) after 2-4 days of hospitalization. ** p<0.01; *

2 P<0.05. Hierarchical cluster analysis, Pearson correlation test (2-tailed).

3

1 **Figure legend**

2 **Figure 1. Profile of ACE2 multi-organ expression and corresponding multi-organ injury.**

3 (A) Immunohistochemically pattern of ACE2 (SARS-CoV-2 receptor) protein
4 expression in different organs. (1-2) Lung: high expression of ACE2 was found in (1)
5 bronchiolar epithelial cells and (2) alveolar epithelial cells. (3-5) Pancreas: serial
6 sections including (3) Hematoxylin-Eosin (HE) stain showing the exocrine tissue of
7 pancreas around and a pancreatic islet in the middle, (4) negative immunostaining
8 control showing no non-specific staining, (5) expression of ACE2 in pancreas as
9 assessed by immunohistochemistry showing endocrine tissue is strongly positive
10 compared with exocrine tissue. (6) Heart: ACE2 was present in the myocytes,
11 myocardium, border zone, endothelium of small-to-large arteries as well as
12 sporadically within the smooth muscle of these vessels. (7) Kidney: ACE2 was very
13 weakly present in glomerular visceral and parietal epithelium, but strongly present in
14 the brush border and cytoplasm of proximal tubular cells, and in the cytoplasm of
15 distal tubules and collecting ducts. (8) Liver: hepatocytes and other cells including the
16 endothelium of sinusoids were negative.

17 (B) Kaplan–Meier survival curves for in-hospital death rate of patients with
18 COVID-19 subgroup by indicators of multi-organ injury including: FBG ≥ 7.0 mmol/L
19 for the pancreatic islet; LDH ≥ 250 IU/L for the heart; Cr ≥ 97 μ mol/L for the kidney
20 and ALT ≥ 40 IU/L for the liver. log-rank test.

21 (C) At the time of (a) admission and (b) after 2-4 days of hospitalization, levels of FBG, LDH,
22 Cr and ALT among *Critical*, *Severe* and *Moderate* patients with COVID-19 (mean \pm s.e.m.,
23 *Moderate*, n=23; *Severe*, n= 20; and *Critical*, n=26).

24 (D-G) Longitudinal observation during admission and subsequent treatment, levels of (D)
25 FBG, (E) LDH, (F) Cr, and (G) ALT in five survived *Critical* patients (S1-S5) (Left) and
26 in five deceased *Critical* patients (D1-D5) (Right).

1 **Figure 2. Effects of indicators of multi-organ injury on the risk of poor outcomes and**
2 **in-hospital death in patients with COVID-19.**

3 (A) Univariable Logistic regression indicated odds ratios (OR) for effects of indicators of
4 multi-organ injury on poor outcomes.

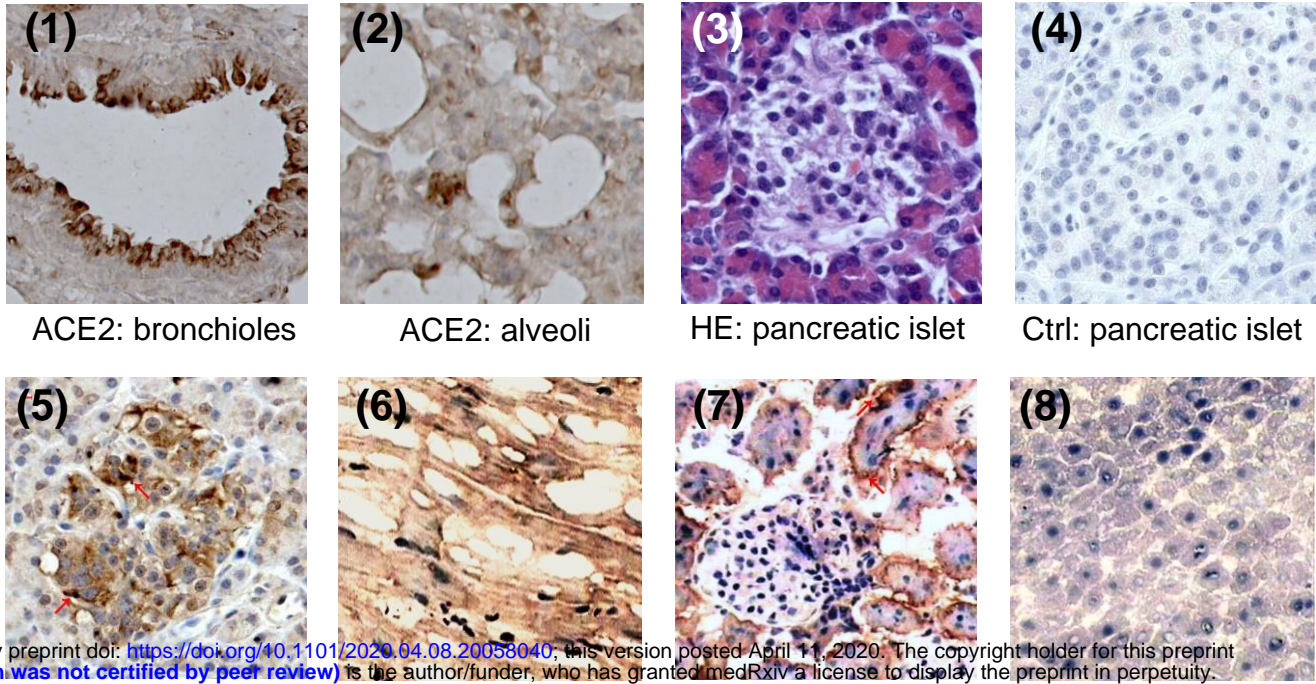
5 (B) Multivariable Logistic regression indicated OR for effects of independent indicators of
6 multi-organ injury on poor outcomes.

7 (C) Univariable Cox regression indicated effects of indicators of multi-organ injury on
8 predicting in-hospital death.

9 (D) Multivariable Cox regression indicated effects of independent indicators of multi-organ
10 injury on predicting in-hospital death.

11 (E) Hierarchical cluster analysis of six indicators indicated these indicators were
12 interdependent to each other.

A

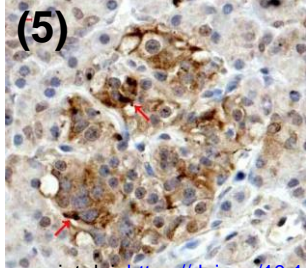


(1) ACE2: bronchioles

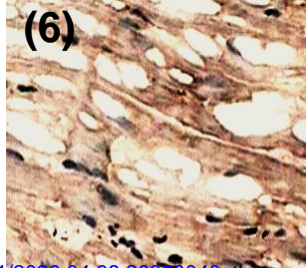
(2) ACE2: alveoli

(3) HE: pancreatic islet

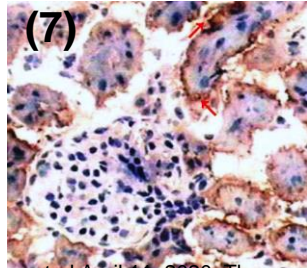
(4) Ctrl: pancreatic islet



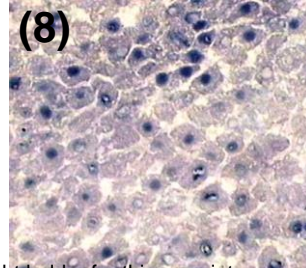
(5)



(6)



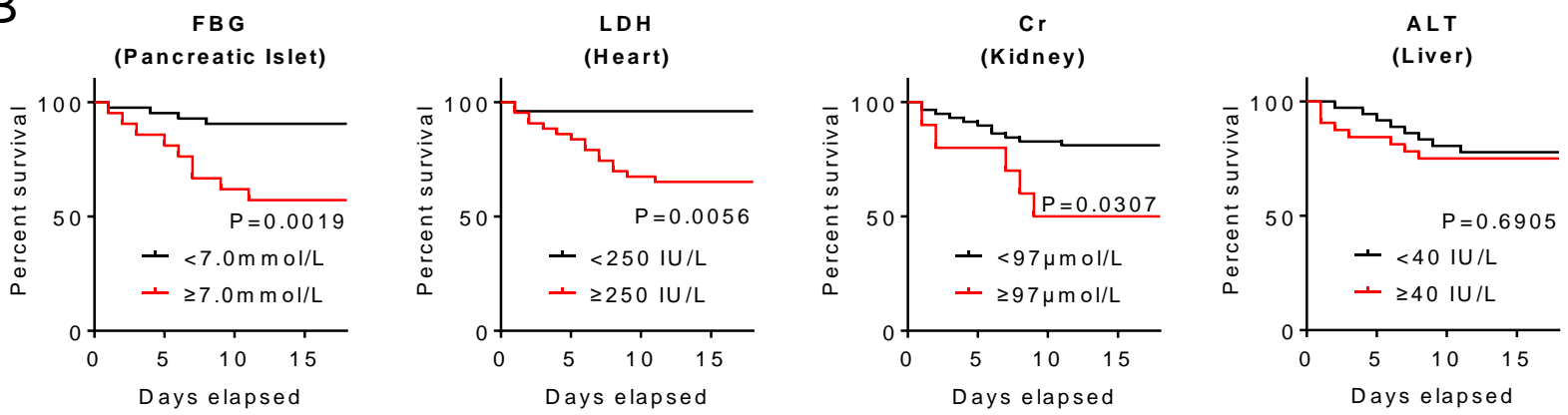
(7)



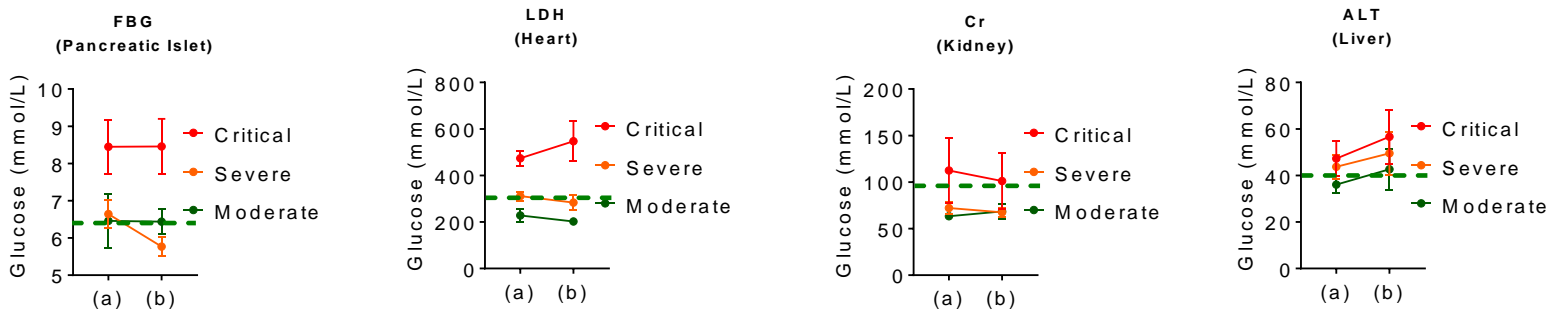
(8)

medRxiv preprint doi: <https://doi.org/10.1101/2020.04.08.20058040>; this version posted April 11, 2020. The copyright holder for this preprint (which was not certified by peer review) is the author/funder, who has granted medRxiv a license to display the preprint in perpetuity. It is made available under a [CC-BY-NC-ND 4.0 International license](https://creativecommons.org/licenses/by-nc-nd/4.0/).

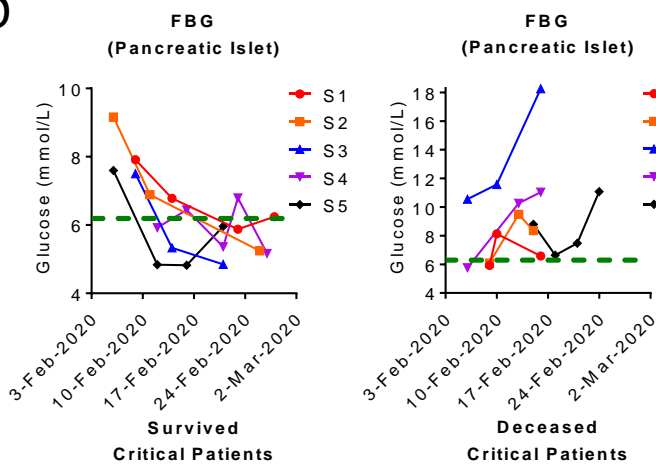
B



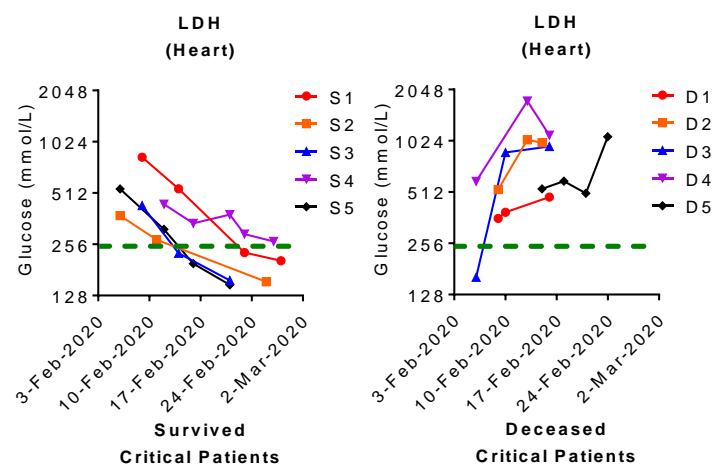
C



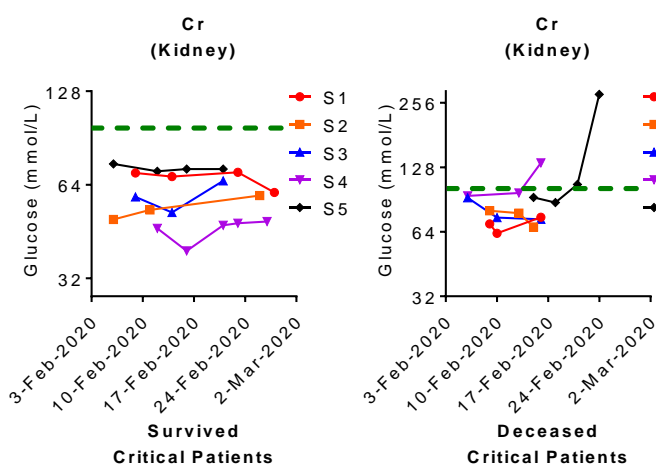
D



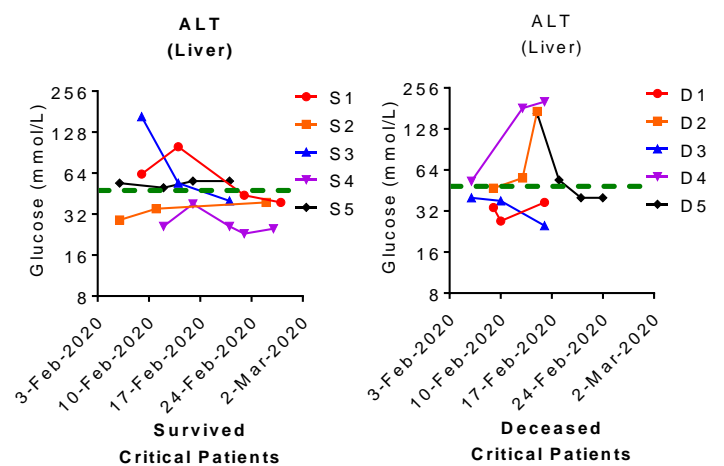
E



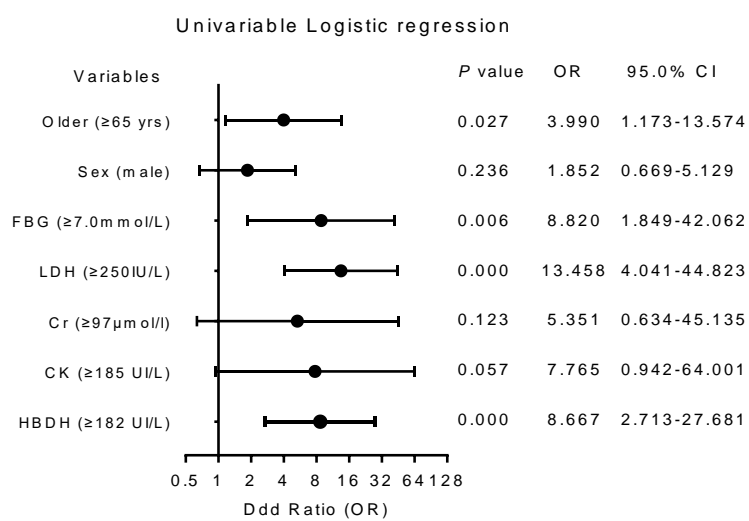
F



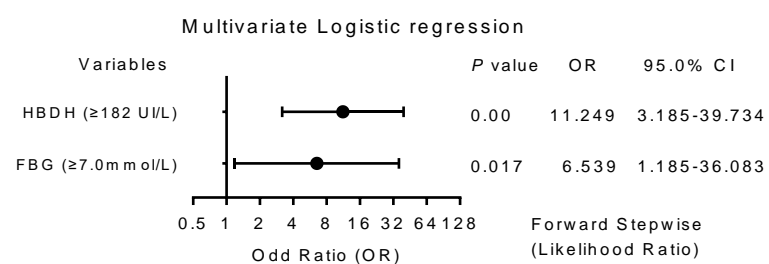
G



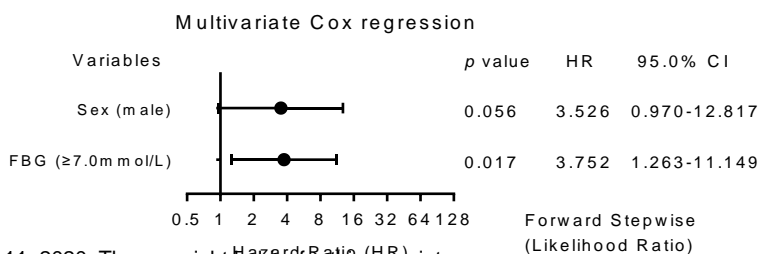
A



B

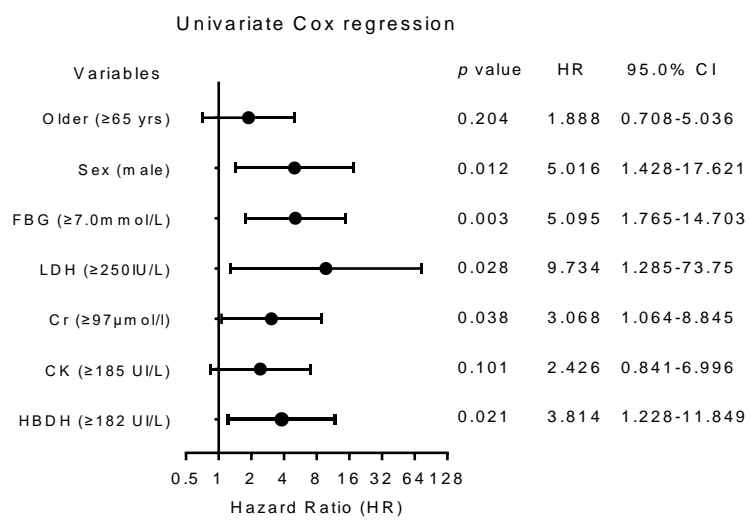


D



medRxiv preprint doi: <https://doi.org/10.1101/2020.04.08.20058040>; this version posted April 11, 2020. The copyright holder for this preprint (which was not certified by peer review) is the author/funder, who has granted medRxiv a license to display the preprint in perpetuity. It is made available under a [CC-BY-NC-ND 4.0 International license](https://creativecommons.org/licenses/by-nc-nd/4.0/).

C



E

