

1 Genomic Analysis of Cardiac Surgery-Associated *Mycobacterium chimaera*

2 Infections in Italy

3 Arash Ghodousi¹, Emanuele Borroni¹, Marta Peracchi², Giorgio Palù³, Loredana Fallico⁴, Mario Rassa⁴,
4 Vinicio Manfrin⁴, Paola Mantegani¹, Vincenzina Monzillo⁵, Riccardo Manganelli³, Enrico Tortoli¹,
5 Daniela Maria Cirillo^{1*}

6
7 1. Emerging Bacterial Pathogens Unit, Division of Immunology, Transplantation and Infectious Diseases,
8 IRCCS San Raffaele Scientific Institute, Milan, Italy

9 2. Azienda Ospedaliera di Padova, Padova, Italy

10 3. University of Padova, Padova, Italy

11 4. San Bortolo Hospital, Vicenza, Italy

12 5. U.O.C Microbiologia e Virologia, Fondazione IRCCS Policlinico San Matteo, Pavia, Italy

13

14 * Address correspondence to Daniela Maria Cirillo, Emerging Bacterial Pathogens Unit, Division of
15 Immunology, Transplantation and Infectious Diseases, IRCCS San Raffaele Scientific Institute, via Olgettina
16 58, 20132 Milan, ITALY; Telephone +39 02 2643 5684, Fax +39 02 2643 5183; mail: cirillo.daniela@hsr.it.

17

18

19 **Abstract**

20 One hundred and twenty-two *Mycobacterium chimaera* strains isolated in Italy from cardiac surgery-
21 related patients, cardiac surgery-unrelated patients and from heater-cooler units, were submitted to
22 whole-genome sequencing and to subsequent SNP analysis. All but one strains isolated from cardiac
23 surgery-related patients belonged to Subgroup 1.1 (19/23) or Subgroup 1.8 (3/23). Only 28 out of 79 strains
24 isolated from heater-cooler units belonged to groupings other than 1.1 and 1.8. The strains isolated from
25 cardiac surgery-unrelated patients were instead distributed across the phylogenetic tree. Our data, the first
26 on isolates from Italy, are in agreement with a recent large genomic study suggesting a common source,
27 represented by strains belonging to Subgroups 1.1 and 1.8, of cardiac surgery-related *Mycobacterium*
28 *chimaera* infections. The strains belonging to groupings other than 1.1 and 1.8 isolated from heater-cooler
29 units evidently resulted from contaminations at hospital level and had no share in the *Mycobacterium*
30 *chimaera* outbreak. One *Mycobacterium chimaera* strain investigated in this study proved distant from
31 every previously known *Mycobacterium chimaera* Groups (1, 2, 3 and 4) and we propose to assign to a
32 novel group, named "Group 5".

33

34

35 Introduction

36 A global outbreak of *Mycobacterium chimaera* (*M. chimaera*) infections associated with open heart cardiac
37 surgery is ongoing. Since 2013, when the first cases, dated back to 2011, were discovered [1] more than
38 140 cases of severe *M. chimaera* infection have been identified worldwide in patients who had undergone
39 cardiothoracic surgery with extracorporeal circulation [2]. Very early it emerged that the specific heater-
40 cooler units (HCUs) used in the operating rooms were contaminated by *M. chimaera* and likely represented
41 the source of infection [3]. Whole genome sequencing (WGS) of *M. chimaera* strains isolated from patients
42 and HCUs of a specific brand and model (Livanova 3T, Germany), both in hospitals and at the factory, has
43 revealed high level of genetic similarity making the most plausible hypothesis a point source contamination
44 of the devices during manufacture [4].

45 Very little is known about the relation of the Italian clinical and environmental isolates to the global
46 epidemic.

47 We report here the results of WGS analysis conducted on 122 *M. chimaera* isolates from cardiac surgery
48 (CS) related and unrelated patients and from HCUs in different centres in Italy.

49

50 Materials and Methods

51 A total of 122 Italian isolates of *M. chimaera* were included in this study; 79 from HCUs and 43 from
52 patients, collected between 2015-2019. All clinical *M. chimaera* isolates were received from different
53 hospitals together with medical records of the patients.

54 Among the 43 patients, 23 had a history of cardiothoracic surgery (CS-related) and 15 had never undergone
55 open-heart surgery (CS-unrelated). For five additional patients no information was available confirming or
56 excluding previous open-heart surgery.

57 In order to compare our isolates with those already reported as part of the global epidemic we included
58 five published environmental isolates from water supply and from new built 3T-HCUs at LivaNova
59 production site (n=2; Subgroup 1.8; GenBank accession nos. ERR1463901, ERR1463898), 3T-HCUs in use in
60 Switzerland (n=2; Subgroup 1.1 and Branch 1; GenBank accession nos. ERR1464041, ERR1463965) and at
61 Maquet (Rastatt, Germany) HCU production site (n=1; Subgroup 1.8; GenBank Accession no. ERR1464127).

62 WGS was performed on the Illumina NextSeq 500 platform and the reads were mapped on *M. chimaera*
63 DSM-44623 as reference genome using Burrows-Wheeler Aligner [6]. All datasets reached a mean coverage
64 >50 fold, with at least 80% of the reference genomes positions complying with the thresholds of variant
65 detection (at least 10-fold coverage and 75% allele frequency). Variant calling was done using the widely
66 employed programs Samtools [7] and the Genome Analysis Toolkit (GATK) [8]. The combined set of
67 detected high quality SNP positions was used to construct a Maximum parsimony tree using RAxML version
68 8 [9] with a general time reversible substitution model, 1,000 re-samples and Gamma20 likelihood
69 optimization to account for rate heterogeneity among sites. The resulting phylogenetic tree was then
70 visualized and annotated using the online program GrapTree [10].

71 In order to detect the mixed populations in the samples we reduced the threshold of variant detection (at
72 least 2-fold coverage and 5% allele frequency).

73 Single genomes were located to Groups, Subgroups and Branches in the basis of signature SNPs described
74 previously [4]. Non-Group 1 and mixed genomes with the major subpopulation < 75% were excluded from
75 phylogenetic analysis (n= 19 genomes).

76

77 **Results and discussion**

78 Out of 122 genomes only three belonged to groups other than Group 1. Their distribution among the
79 different groupings is as reported in Table 1.

80 All *M. chimaera* isolates from CS-related patients fitted Group 1; of these, 19 belonged to Subgroup 1.1,
81 three to Subgroup 1.8 and one to Branch 1. Moreover, Subgroups 1.1 and 1.8 included 51 out of 79 isolates
82 from HCUs. Nine isolates from HCUs and one from a CS-related patient, all belonging to Subgroup 1.1, were
83 identical to one strain isolated from HCU in Switzerland [4]. Furthermore, our isolates of Subgroup 1.8,
84 from HCUs and CS-related patients, were very similar to the strains grown from water supply and 3T-HCU at
85 production site [3].

86 A common source of *M. chimaera* infection has been recognized on the basis of the remarkable similarity
87 between almost all the isolates from patients with a history of cardiac surgery and the ones recovered from
88 most HCUs [4,5]. Three distinct strains of *M. chimaera*, belonging to Subgroups 1.1, 1.8, and 2.1, have been

89 reported responsible of contamination of LivaNova HCUs at the production site [4]. This finding is in
90 agreement with our results showing large prevalence of Subgroups 1.1 and 1.8 among the isolates from CS-
91 related patients and HCUs (Figure 1). Only in one CS-associated patient we isolated *M. chimaera* belonging
92 to Branch 1; this strain was isolated from a sputum sample and the patient did not present any of signs or
93 symptoms related to deep infection by *M. chimaera*.

94 The isolates from CS-unrelated patients were distributed across the phylogenetic tree, mostly belonging to
95 Branch 1. Overall, the isolates within Subgroup 1.1 showed comparatively little diversity, with a median
96 pairwise distance of only 4 SNPs (range 0-20). Unaccountably, two isolates from two CS-unrelated patients,
97 in different hospitals, grouped with Subgroup 1.1 and were extremely similar to those from CS-related
98 patients and HCUs.

99 A very peculiar *M. chimaera* strain was isolated from lower respiratory infection in a CS-unrelated patient.
100 The INNO-LiPA MYCOBACTERIA v.2 line-probe assay ascribed the strain to the *Mycobacterium avium*
101 *complex*. Sequencing of the full 16S rRNA gene and the 16S–23S ITS identified the bacterium as *M.*
102 *chimaera*. The value of ANI (98,53% identity) definitively confirmed that our strain and *M. chimaera* DSM-
103 44623 belonged to the same species. Alignment of concatenated SNPs of our isolate and those of the four
104 known *M. chimaera* groups performed by using clustal_x software and subsequent visualization with
105 SplitsTree4 software confirmed the phylogenetic position of all the genomes within the *Mycobacterium*
106 *avium complex*, most closely related to *M. chimaera*. Interestingly, using the suggested threshold of 1000
107 SNPs for defining *M. chimaera* groups [4], the strain proved different from all four known groups, with the
108 groups 1, 2, 3 and 4 being 23793, 6837, 9431 and 23818 SNPs distant respectively (Figure 2).

109 Present study has some limitations related to the partial coverage of the Italian *M. chimaera* epidemic and
110 to lack of epidemiological data linking individual patients to specific HCUs.

111 **Conclusions**

112 In conclusion, clinicians should monitor patients who have had cardiac surgery using HCUs for signs and
113 symptoms of *M. chimaera* infection to enable early diagnosis and treatment. Finally, we shown that WGS is
114 the preferred method to distinguish whether a clinical strain is related to the HCU outbreak strain.

115 All sequence reads were submitted to the NCBI sequence read archive (Project number **PRJNA592124**).

116 **References:**

- 117 1. Achermann Y, Rössle M, Hoffmann M, Deggim V, Kuster S, Zimmermann DR, et al. Prosthetic Valve
118 Endocarditis and Bloodstream Infection Due to *Mycobacterium chimaera*. J Clin Microbiol. 2013
119 Jun 1;51(6):1769.
- 120 2. Campins Marti M, Borrás Bermejo B, Armadans Gil L. Infections with *Mycobacterium chimaera* and
121 open chest surgery. An unresolved problem. Med Clin (Barc). 2019 Apr 18;152(8):317–23.
- 122 3. Sax H, Bloemberg G, Hasse B, Sommerstein R, Kohler P, Achermann Y, et al. Prolonged Outbreak of
123 *Mycobacterium chimaera* Infection After Open-Chest Heart Surgery. Clinical Infectious Diseases.
124 2015 Mar 11;61(1):67–75.
- 125 4. Ingen J van, Kohl TA, Kranzer K, Hasse B, Keller PM, Szafrńska AK, et al. Global outbreak of severe
126 *Mycobacterium chimaera* disease after cardiac surgery: a molecular epidemiological study. The
127 Lancet Infectious Diseases. 2017;17(10):1033–41.
- 128 5. Zhang X, Lin J, Feng Y, Wang X, McNally A, Zong Z. Identification of *Mycobacterium chimaera* in
129 heater-cooler units in China. Scientific Reports. 2018 May 18;8(1):7843.
- 130 6. Li H, Durbin R. Fast and accurate short read alignment with Burrows–Wheeler transform.
131 Bioinformatics. 2009 Jul 15;25(14):1754–60.
- 132 7. Li H, Handsaker B, Wysoker A, Fennell T, Ruan J, Homer N, et al. The Sequence Alignment/Map
133 format and SAMtools. Bioinformatics. 2009 Aug 15;25(16):2078–9.
- 134 8. McKenna A, Hanna M, Banks E, Sivachenko A, Cibulskis K, Kernytsky A, et al. The Genome Analysis
135 Toolkit: A MapReduce framework for analyzing next-generation DNA sequencing data. Genome
136 Research. 2010 Sep 1;20(9):1297–303.
- 137 9. Stamatakis A. RAxML version 8: a tool for phylogenetic analysis and post-analysis of large
138 phylogenies. Bioinformatics. 2014;30(9):1312–3.

139 10. Zhou Z, Alikhan N-F, Sergeant MJ, Luhmann N, Vaz C, Francisco AP, et al. GrapeTree: visualization of
140 core genomic relationships among 100,000 bacterial pathogens. *Genome Research*.
141 2018;28(9):1395–404.

142

143

144 **Funding**

145 This research did not receive any specific grant from funding agencies in the public, commercial, or not-for-
146 profit sectors.

147 **Conflicts of interest**

148 None declared.

149 **Ethical approval**

150 Ethical approval not required.

151

152

153 **Table 1.** Distribution of Genomes among different groupings basing on specific SNP signatures.

154 **Figure 1.** Maximum parsimony tree built from 348 SNP positions of the 108 group1 isolates mapped to the
155 genome of *M. chimaera* DSM44623 in logarithmic scale. The *M. chimaera* genomes from HCUs, patients
156 and published genomes are indicated in different colours. The two major outbreak subgroups 1.1, 1.8 and
157 also other subgroups are indicated by red labels. A cut-off of 5 SNPs was used to collapse the branches. For
158 this analysis, we combined all group 1 isolates from our study with five other published genomes from
159 LivaNova HCUs, water supply at production site and Maquet HCU production site. We excluded isolates for
160 which a mixed strain population was detected based on signature SNPs [4].

161 **Figure 2.** NeighborNet splitstree tree built from 60570 SNP positions of representative *M. chimaera*
162 genomes belonging to Groups 1, 2, 3 and 4, supporting the presence of a previously unreported grouping
163 we named Group 5.

164

165

166

167

168

169

170

171

172 Table 1

173

	HCU	CS-related patients	CS-unrelated patients	CS-unknown patients
Subgroup 1.1	44	19	2	2
Branch 1	7	1	8	3
Subgroup 1.8	7	3		
Branch 2			2	
Group 1.ungruoped			2	
Group 2	2			
Group 5*			1	
Subgroups 1.1+1.8	10			
Subgroup 1.1+Branch 1	4			
Other Mixes	5			
Total	79	23	15	5

174 *Found in this study

175

176

177

178

179

180

181

182

183

184

185

186

187

188

189

190

191

192

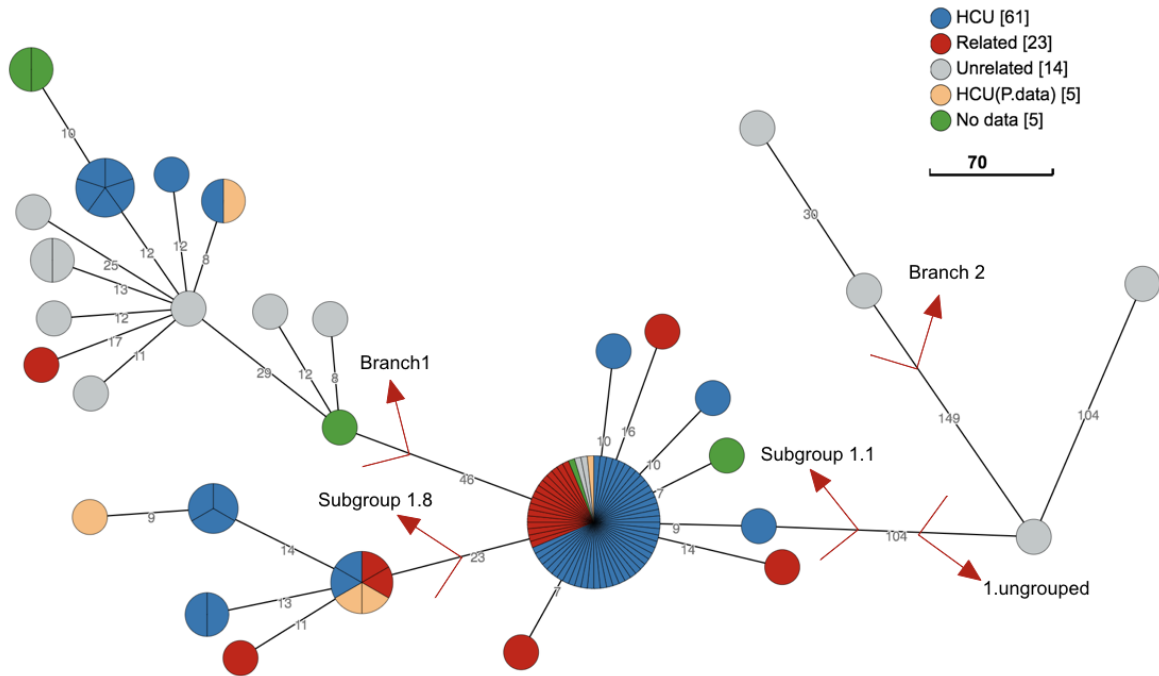
193

194

195

196

197 Figure 1



198

199

200

201

202

203

204

205

206

207

208

209

210

211

212

213

214

215

216 Figure 2

217

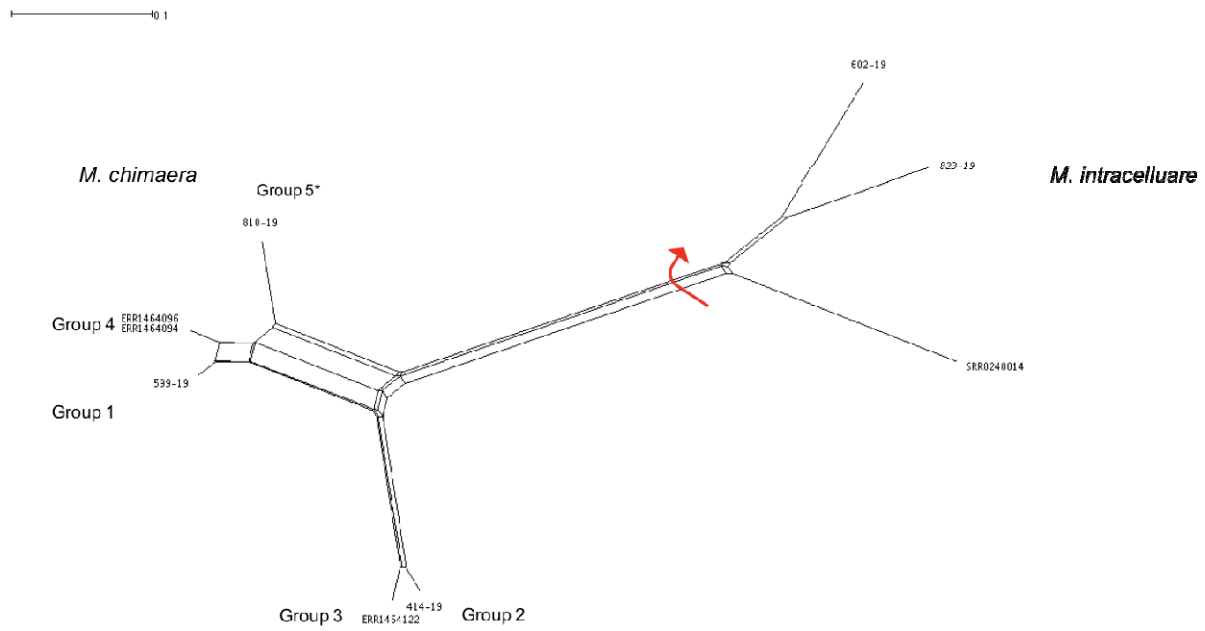
218

219

220

221

222



223