

1 Estimating the risk of COVID-19 death during the 2 course of the outbreak in Korea, February- May, 2020

3 Eunha Shim ^{1,*}, Kenji Mizumoto ^{2,3,4}, Wongyeong Choi ¹ and Gerardo Chowell ²

4 ¹ Department of Mathematics, Soongsil University, Seoul, Republic of Korea 06978; alicia@ssu.ac.kr;
5 chok10004@soongsil.ac.kr

6 ² Department of Population Health Sciences, School of Public Health, Georgia State University, Atlanta, GA,
7 USA. 30303; gchowell@gsu.edu

8 ³ Graduate School of Advanced Integrated Studies in Human Survivability, Kyoto University, Kyoto, Japan
9 615-8530; mizumoto.kenji.5@kyoto-u.ac.jp

10 ⁴ Hakubi Center for Advanced Research, Kyoto University, Yoshidahonmachi, Sakyo-ku, Kyoto, Japan
11 615-8530

12 * Correspondence: alicia@ssu.ac.kr

13
14 **Abstract:** Background: In Korea, a total of 10,840 confirmed cases of COVID-19 including 256
15 deaths have been recorded as of May 9, 2020. The time-delay adjusted case fatality risk (CFR) of
16 COVID-19 in Korea is yet to be estimated. Methods: We obtained the daily series of confirmed
17 cases and deaths in Korea reported prior to May 9, 2020. Using statistical methods, we estimated
18 the time-delay adjusted risk for death from COVID-19 in Daegu, Gyeongsangbuk-do, other regions
19 in Korea, as well as the entire country. Results: Our model-based crude CFR fitted the observed
20 data well throughout the course of the epidemic except for the very early stage in
21 Gyeongsangbuk-do; this was partially due to the reporting delay. Our estimates of the risk of death
22 in Gyeongsangbuk-do reached 25.9% (95% CrI: 19.6%-33.6%), 20.8% (95% CrI: 18.1%-24.0%) in
23 Daegu and 1.7% (95% CrI: 1.1%-2.5%) in other regions, whereas the national estimate was 10.2%
24 (95% CrI: 9.0%-11.5%). Conclusions: The latest estimates of CFR of COVID-19 in Korea are
25 considerably high, even with the early implementation of public health interventions including
26 widespread testing, social distancing, and delayed school openings. Geographic differences in the
27 CFR are likely influenced by clusters tied to hospitals and nursing homes.

28 **Keywords:** Coronavirus; COVID-19; Korea; fatality; deaths; case fatality risk

29 1. Introduction

30 Since the first reports of cases from Wuhan in the Hubei Province of China in December 2019,
31 more than 84,400 cases of the 2019 novel coronavirus disease (COVID-19), including 4,643 deaths
32 have been reported in China [1]. Based on the estimates by a joint fact-finding mission of the World
33 Health Organization (WHO) and Chinese authorities, the epidemic in China peaked between late
34 January and early February 2020 [2]. However, the virus has been seeded in numerous countries and
35 is now causing sustained outbreaks in several areas, with the rate of new cases outpacing that in
36 China. As of May 9, 2020, the global cumulative number of reported infections and deaths were
37 3,759,967 and 259,474, respectively [1]. Outside China, new cases initially occurred primarily among
38 travelers from China and their contacts, but local transmission has driven major outbreaks in
39 numerous countries including the U.S., Spain, Russia, and U.K. [1].

40 The onset of the COVID-19 outbreak in South Korea was on January 19, 2020, when the first
41 confirmed infected subject entered the country from Wuhan, China [3]. The severe acute respiratory
42 syndrome coronavirus-2 (SARS-CoV-2) has since continued to spread in Korea in the form of a series
43 of clusters of variable size and geographic location in addition to imported cases [4]. As of May 9,
44 2020, the cumulative number of COVID-19 reported cases and deaths in Korea was 10,840 and 256,
45 respectively [5].

46 **NOTE:** To accurately estimate the epidemiological and economic burden of an infectious disease,
47 this preprint reports new research that has not been certified by peer review and should not be used to guide clinical practice.
assessing the associated risk of death as well as the transmission potential are critical. Although the

48 transmission modes of COVID-19 are not completely understood, person-to-person spread through
 49 respiratory droplets appears to be the main mode of transmission. The transmissibility of COVID-19
 50 was found to be relatively high, with the mean basic reproduction number in the range 1.4-1.6 in
 51 Korea [4] and 2-7.1 in China [6-13]. In the absence of vaccines against COVID-19 or antiviral drugs
 52 for its treatment, epidemic control relies on the implementation of symptom monitoring and
 53 non-pharmaceutical interventions such as social distancing and the use of face masks.

54 Assessing the severity of infection of COVID-19 facilitates the prediction of the risk of death
 55 during the course of the epidemic. The crude case fatality risk (CFR) can be measured by estimating
 56 the proportion of the cumulative number of deaths to the cumulative number of cases at a certain
 57 point in time. However, owing to the delay from diagnosis to death, this metric cannot accurately
 58 capture the increase in the number of fatal cases and therefore underestimate infection severity. On
 59 the other hand, the denominator is calculated based on confirmed cases only, and thus the actual
 60 CFR based on all infected individuals may be overestimated, resulting in ascertainment bias.

61 As Korea has instituted large-scale testing at the core of the control interventions [14], the aim of
 62 the present study is to estimate the risk of death among confirmed cases, considering the
 63 ascertainment bias and right-censored likelihood for modeling the count of deaths by using
 64 established methods [15]. Specifically, to estimate the current severity of the COVID-19 epidemic in
 65 Korea, we report the estimates of the time-delay adjusted CFR for Daegu, Gyeongsangbuk-do, other
 66 regions (i.e., outside Daegu and Gyeongsangbuk-do), and Korea (national), with quantified
 67 uncertainty.

68 2. Method

69 2.1 Data sources

70 We obtained the daily series of confirmed cases and deaths in Korea from daily reports
 71 published by the Korea Centers for Disease Control and Prevention (KCDC) [5]. These data were
 72 categorized by geographic area, namely, Daegu, Gyeongsangbuk-do, other regions, and Korea
 73 (national), considering that 70% of the deaths are currently occurring in Daegu. The virus that causes
 74 COVID-19, that is, SARS-CoV-2 RNA, can be detected by reverse-transcription polymerase chain
 75 reaction (RT-PCR), and according to the Center for Laboratory Control of Infectious Diseases in
 76 KCDC, the upper limit of the Ct value for positive RT-PCR of SARS-CoV-2 is 35, whereas the
 77 negative criterion is a Ct value of 37 or higher [16]. Our analysis relies on epidemiological data
 78 reported prior to May 9, 2020.

79 2.2 Case fatality ratio

80 The crude CFR is defined as the number of cumulative deaths divided by the number of
 81 cumulative cases at a specific point in time. For the real-time estimation of CFR, we employ the delay
 82 h_s from hospitalization to death. This is assumed to be given by $h_s = H(s) - H(s-1)$ for $s > 0$ where $H(s)$
 83 is the cumulative density function of the delay from hospitalization to death and follows a gamma
 84 distribution with a mean of 10.1 days and SD of 5.4 days, according to a recent study that estimated
 85 the CFR in China [17]. We let π_{a,t_i} be the time-delay adjusted CFR for reported day t_i in area a . The
 86 likelihood function of the estimate π_{a,t_i} is calculated as

$$87 \quad L(\pi_{a,t_i}; c_{a,t}) = \prod_{t_i} \left(\frac{\sum_{t=1}^{t_i} c_{a,t}}{D_{a,t_i}} \right) \left(\pi_{a,t_i} \frac{\sum_{t=2}^{t_i} \sum_{s=1}^{t-1} c_{a,t-s} h_s}{\sum_{t=1}^{t_i} c_{a,t}} \right)^{D_{a,t_i}} \left(1 - \pi_{a,t_i} \frac{\sum_{t=2}^{t_i} \sum_{s=1}^{t-1} c_{a,t-s} h_s}{\sum_{t=1}^{t_i} c_{a,t}} \right)^{\sum_{t=1}^{t_i} c_{a,t} - D_{a,t_i}}$$

88 where $c_{a,t}$ represents the number of new cases reported on day t in area a , and D_{a,t_i} is the cumulative
 89 number of deaths until day t_i in area a [17-19]. Among the cumulative cases with reported day t in
 90 area a , D_{a,t_i} have died, and the remainder have survived the infection. The factor in the second
 91 parenthesis represents the contribution of those who have died (with biased death risk), and the

92 factor in the third parenthesis represents the contribution of the survivors. We assume that $D_{a,ti}$ is the
 93 result of a binomial sampling process with probability $\pi_{a,ti}$.

94 We estimated the model parameters using the Monte Carlo Markov Chain (MCMC) method in
 95 a Bayesian framework. The posterior distributions of the model parameters were estimated by
 96 sampling from the three Markov chains. For each chain, we drew 100,000 samples from the posterior
 97 distribution after a burn-in of 20,000 iterations. The convergence of the MCMCs was evaluated using
 98 the potential scale reduction statistic [20,21]. The estimates and 95% credibility intervals are based on
 99 the posterior probability distribution of each parameter and on the samples drawn from these
 100 distributions. The statistical analysis was conducted in R version 3.6.1 (R Foundation for Statistical
 101 Computing, Vienna, Austria) using the rstan package.

102 3. Results

103 As of May 9, 2020, a total of 10,840 COVID-19 cases and 256 deaths have been reported in Korea.
 104 Among these, 6,859 cases (63.3 %) are from Daegu, and 1,366 cases (12.6 %) are from
 105 Gyeongsangbuk-do (Table 1). Among the 256 deaths, 178 (69.5%) are from Daegu, 53 (20.7%) are
 106 from Gyeongsangbuk-do and only 25 (9.8%) are from other areas. It is noted that the fatality risk
 107 increases dramatically with age, and the oldest age group exhibits the highest case fatality (Table 2).
 108 As in other affected countries including China and the U.S., it has been reported that males have
 109 higher mortality than females [22,23].
 110

111 **Table 1.** Time-delay adjusted CFR of COVID-19 in the three areas under study (as of May 9th, 2020)

Area	Latest estimate	Range of median estimates during the study period	Crude CFR
Daegu	20.8% (95% CrIs: 18.1%-24.0%)	1.2%-20.8%	2.6% (95% CI [§] : 2.2%-3.0%) 178/6859
Gyeongsangbuk-do	25.9% (95% CrI: 19.6%-33.6%)	2.0%-83.6%	3.9% (95% CI: 2.9%-5.0%) 53/1366
Other regions	1.7% (95% CrI: 1.1%-2.5%)	0.6%-3.8%	1.0% (95% CI: 0.6%-1.4%) 25/2615
Korea (national)	10.2% (95% CrI: 9.0%-11.5%)	1.3%-16.6%	2.4% (95% CI: 2.1%-2.7%) 256/10840

112 [§]CrI: 95% credibility intervals (CrI), [¶]95%CI: 95% confidence interval

113 **Table 2.** Distribution of the cases by sex and age group (as of May 9, 2020) [5]

		Confirmed cases # (%)	Deaths # (%)	Fatality rate (%)
Total		10,840 (100.00)	256 (100.00)	2.36
Sex	Male	4,406 (40.65)	133 (51.95)	3.02
	Female	6,434 (59.35)	123 (48.05)	1.91
Age Group	0-9	141 (1.30)	0 (0.00)	-
	10-19	594 (5.48)	0 (0.00)	-
	20-29	2,979 (27.48)	0 (0.00)	-
	30-39	1,177 (10.86)	2 (0.78)	0.17
	40-49	1,438 (13.27)	3 (1.17)	0.21

	50-59	1,958 (18.06)	15 (5.86)	0.77
	60-69	1,355 (12.50)	37 (14.45)	2.73
	70-79	710 (6.55)	77 (30.08)	10.85
	80 and above	488 (4.50)	122 (47.66)	25.00

114

115

116

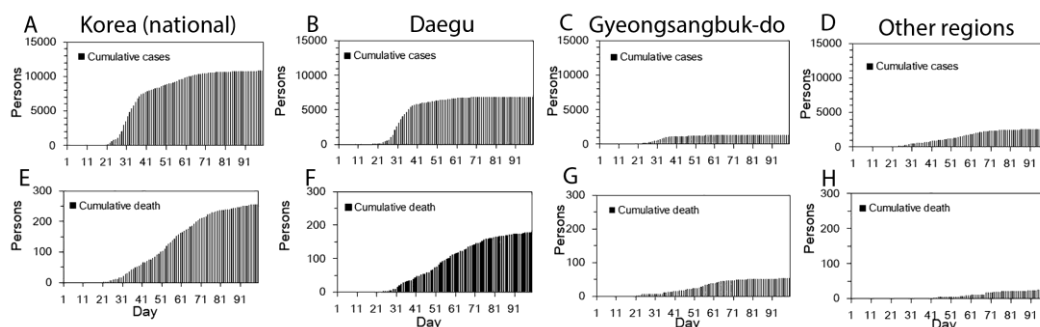
117

118

119

120

The cumulative cases in (A) Korea (national), (B) Daegu, (C) Gyeongsangbuk-do, and (D) other regions, and the cumulative deaths in (E) Korea (national), (F) Daegu, (G) Gyeongsangbuk-do and (H) other regions are shown in Figure 1. The curve of the cumulative number of deaths grows after that of the cumulative number of cases, and the increase in the number of deaths in Daegu is more rapid; furthermore, the associated mortality burden appears to be significantly higher than in the rest of Korea.



121

122

123

124

125

Figure 1. Temporal distribution of cases and deaths by area, February – May 2020. Cumulative cases in (A) Korea (total), (B) Daegu, (C) Gyeongsangbuk-do, and (D) other regions, and cumulative deaths in (E) Korea (total), (F) Daegu, (G) Gyeongsangbuk-do, and (H) other regions. Day 1 corresponds to February 1st, 2020. As the dates of illness onset were not available, the dates of reporting were used.

126

127

128

129

130

131

132

133

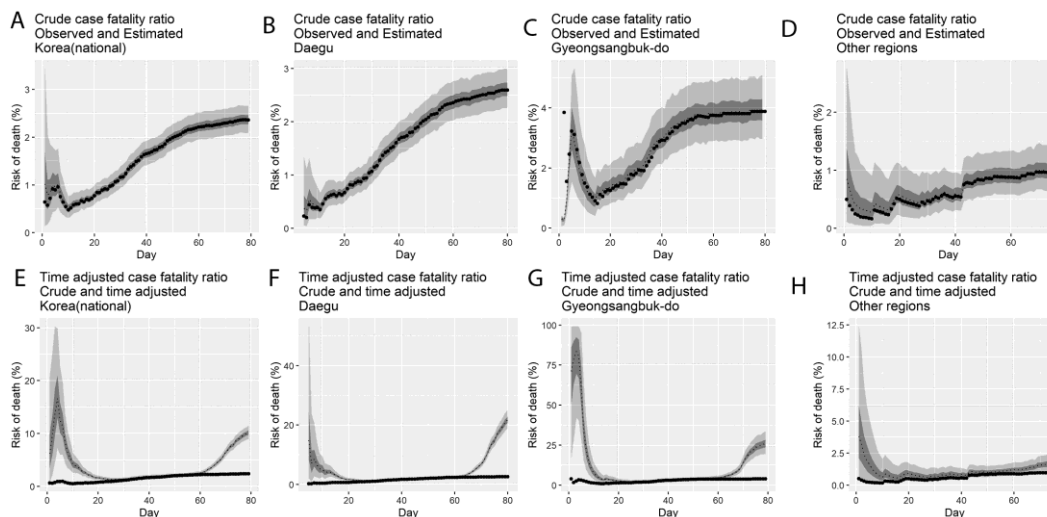
134

135

136

137

The observed and model-based posterior estimates of the crude CFR in (A) Korea (national), (B) Daegu, (C) Gyeongsangbuk-do, and (D) other regions, and the model-based posterior estimates of the time-delay adjusted CFR in (E) Korea (national), (F) Daegu, (G) Gyeongsangbuk-do, and (H) other regions, for February – May, 2020 are shown in Figure 2. Our model-based crude CFR fitted the observed data well throughout the course of the epidemic except for the very early stage in Gyeongsangbuk-do, probably owing to the reporting delay of confirmed cases. During the course of the outbreak, our model-based posterior estimates of the time-delay adjusted CFR take considerably higher values than the observed crude CFR. Our estimates of the time-delay adjusted CFR appear to be decreasing at the early stage almost consistently in all three areas, whereas in Gyeongsangbuk-do, the estimates were low at the early stage, subsequently increased, peaked in the midst of the study period, and are now following an increasing trend similar to those in the other two areas.



138

139

140

141

142

143

144

Figure 2. Temporal variation of risk of death, Korea, February – May 2020. Observed and posterior estimates of the crude CFR in (A) Korea (national), (B) Daegu, (C) Gyeongsangbuk-do, and (D) other regions, and time-delay adjusted CFR in (E) Korea (national), (F) Daegu, (G) Gyeongsangbuk-do, and (H) other regions. Day 1 corresponds to February 1st, 2020. Black dots represent the crude CFR, the light and dark colors indicate 95% and 50% credible intervals for the posterior estimates, respectively.

145

146

147

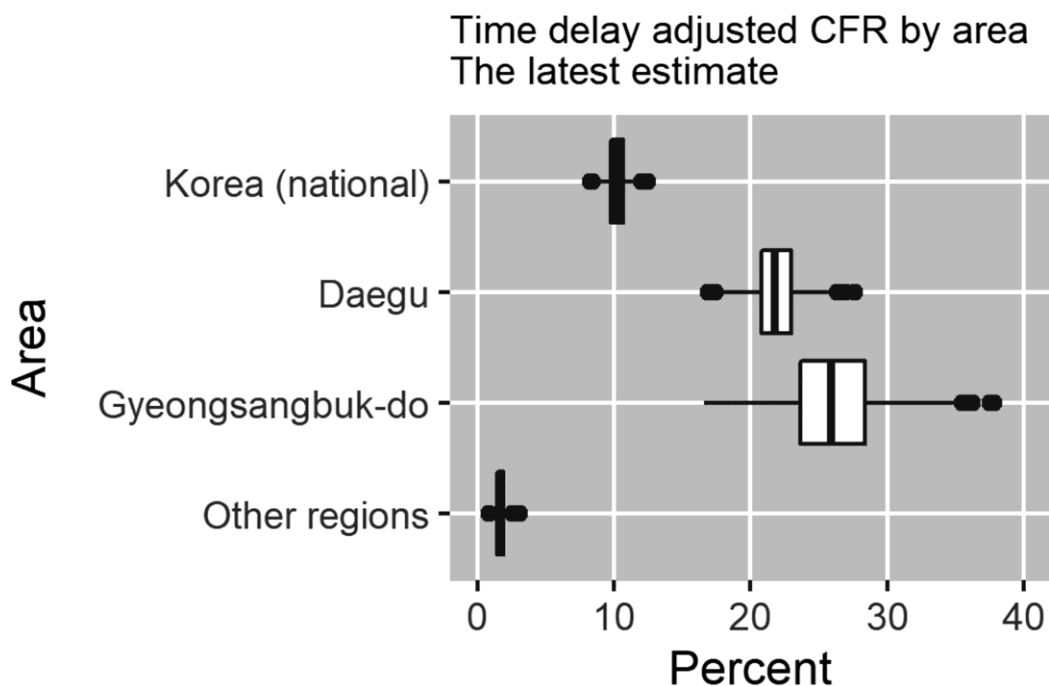
148

149

150

151

The latest estimates (May 9, 2020) of the time-delay adjusted CFR are 20.8% (95% CrI: 18.1%-24.0%) in Daegu, 25.9% (95% CrI: 19.6%-33.6%) in Gyeongsangbuk-do, 1.7% (95% CrI: 1.1%-2.5%) in other regions and 10.2% (95% CrI: 9.0%-11.5%) in Korea (national), whereas the observed crude CFR is 2.6% (95% CI: 2.2%-3.0%) in Daegu, 3.9% (95% CI: 2.9%-5.0%) in Gyeongsangbuk-do, 1.0% (95% CrI: 0.6%-1.4%) in other regions, and 2.4% (95% CrI: 2.1%-2.7%) in Korea (national) (Figure 3, Table 1).



152

153

154

Figure 3. Latest estimates of time-delay adjusted CFR of COVID-19 by area (May 9, 2020).

155 4. Discussion

156 In this study, we derived estimates of the CFR for the ongoing COVID-19 epidemic in Korea,
157 which is heavily relying on intensive social distancing and mass testing of suspected COVID-19
158 cases to mitigate the incidence levels of the disease and deliver early medical care to the most
159 vulnerable so that the risk of death may be reduced. Specifically, we estimated the time-delay
160 adjusted CFR in three different regions, and we demonstrated that the most severely affected areas
161 were Gyeongsangbuk-do and Daegu, whereas the rest of Korea exhibited a less severe profile. The
162 delay-adjusted CFR in Gyeongsangbuk-do, largely driven by hospital-based transmission, was
163 considerably high, estimated at 25.9% (95% CrI: 19.6%-33.6%), which was approximately 2.5-fold
164 greater than our estimate for all regions in Korea.

165 The fatality distribution indicates the age-dependency of COVID-19. Accordingly, it is highly
166 important to monitor infected individuals of advanced age and/or underlying medical conditions. It
167 has also been reported that the risk of symptomatic infection increases with age, although this may
168 be partially affected by the preferential ascertainment of older and thus more severe cases [24]. In
169 fact, a substantial fraction of the case patients were elderly or had underlying conditions [25]. The
170 youngest case patient was a 35-year old Mongolian male who already had complications from
171 chronic hepatic failure with cirrhosis and esophageal variceal bleeding [25]. The second-youngest
172 case patient was a 39-year old female with cerebral hemorrhage due to arteriovenous malformation,
173 and she was diagnosed with COVID-19 on March 3, 2020 [26]. Except for these two cases, all deaths
174 associated with COVID-19 in Korea occurred among individuals of age over 40.

175 Our estimated time-adjusted CFR associated with COVID-19 in all regions in Korea is 10.2%
176 (95% CI: 9.0%-11.5%). This estimate is higher than the reported CFR for other coronaviruses such as
177 SARS-CoV [27] and the Middle East respiratory syndrome (MERS) coronavirus [28], as well as the
178 estimates from the 2009 H1N1 influenza pandemic [29,30]. In addition, our estimates are relatively
179 higher than the CFR obtained from affected areas in China (ranging from 1.41% to 5.25%), based on
180 the cases and deaths observed to date [17,31]. In general, the CFR of the same disease may vary
181 greatly in different countries or even different regions of the same country, partially owing to
182 differences in health control policies, availability of healthcare, medical standards, and detection
183 efficiency. In Korea, an extensive COVID-19 testing regime has been instituted, and a massive
184 contact tracing was performed as case numbers grew. As a result, the country has tested more
185 people per capita than any country in the world, with a total of 660,030 people as of May 9, 2020 [5].
186 Even with such extensive testing that may have effectively identified COVID-19 cases, the CFR was
187 shown to be considerably high in Korea.

188 The reported CFR of COVID-19 tends to vary over the course of the epidemic. It is noteworthy
189 that the upward trend of the CFR during the early phase generally indicates increasing
190 ascertainment bias. During a growing epidemic, the final clinical outcome of most reported cases is
191 unknown, and thus the true CFR is underestimated early in the epidemic. This was observed in our
192 results (Figure 2) as well as in prior studies of epidemics of respiratory pathogens including SARS
193 and H1N1 influenza [32,33]. Similarly, the observed time lag between symptom onset and clinical
194 outcomes tends to bias the estimated CFR downward during the early growth phase of an epidemic.

195 When the transmission of COVID-19 was widely recognized by clusters of confirmed cases
196 such as hospital-based transmission, surveillance was typically biased toward detecting clinically
197 severe cases, therefore resulting in higher CFR estimates, as shown in Figure 2 as the epidemic
198 progressed. Specifically, the virus has generated COVID-19 outbreaks in hospitals and nursing
199 homes, including clusters based in Cheongdo Daenam Hospital (resulting in 120 infections),
200 Bonghwa Pureun Nursing Home (68 infections), and Gyeongsan Seo Convalescent Hospital (66
201 infections) in Gyeongsangbuk-do; this explains our higher CFR estimate at 25.9% (95% CrI:
202 19.6-33.6%) for Gyeongsangbuk-do. Similarly, nosocomial clusters also occurred in Uijeongbu St.
203 Mary's Hospital (50 infections) in Gyeonggi province, Second Mi-Ju Hospital (196 infections),
204 Hansarang Convalescent Hospital (128 infections), and Daesil Convalescent Hospital (100 infections)
205 in Daegu [5].

206 Such hospital-based transmission resulted in secondary infections affecting healthcare workers,
207 as well as inpatients and their visitors, thus elevating CFR estimates, as has been previously
208 documented for outbreaks of MERS and SARS in the past [34,35]. In addition, a large number of
209 COVID-19 cases are related to church clusters in Korea, including a total of 5,212 COVID-19 cases in
210 a cluster linked to the Shincheonji Church, accounting for approximately 48% of all confirmed cases
211 [5].

212 Asymptomatic patients complicate the estimation of the CFR for COVID-19. In fact, the
213 transmission of SARS-CoV-2 from asymptomatic individuals (or individuals in the incubation
214 period) has also been described [36-38]. For instance, in a COVID-19 outbreak on a cruise ship,
215 approximately half of the 619 confirmed cases were asymptomatic at the time of diagnosis [39].
216 Moreover, some patients with asymptomatic infection exhibited objective clinical abnormalities. In a
217 previous study of 24 patients with asymptomatic infection, chest computed tomography indicated
218 that 50% of the patients had typical ground-glass opacities or patchy shadowing, and another 20%
219 had atypical imaging abnormalities [40]. In addition, it is likely that asymptomatic or very mild cases
220 were not reported, and thus they were not included in our analysis, possibly overestimating the CFR.
221 Future research and more accurate incidence data including age-stratified serologic studies would
222 improve our estimates.

223

224 **Author Contributions:** ES, KM and GC analyzed the data. WC retrieved and managed the data. ES, KM, and
225 GC wrote the first draft of the manuscript. All authors contributed to the writing of the manuscript, and have
226 read and agreed to the published version of the manuscript.

227 **Funding:** This work was supported by the National Research Foundation of Korea (NRF) grant funded by the
228 Korea government (MSIT) [No. 2018R1C1B6001723] to ES and WC. KM acknowledges support from the Japan
229 Society for the Promotion of Science (JSPS) KAKENHI Grant Number 15K20936, from Program for Advancing
230 Strategic International Networks to Accelerate the Circulation of Talented Researchers Grant Number G2801
231 and from the Leading Initiative for Excellent Young Researchers from the Ministry of Education, Culture, Sport,
232 Science & Technology of Japan. GC acknowledges support from NSF grant 1414374 as part of the joint
233 NSF-NIH-USDA Ecology and Evolution of Infectious Diseases program, and UK Biotechnology and Biological
234 Sciences Research Council grant [BB/M008894/1].

235 **Acknowledgments:** None.

236 **Conflicts of Interest:** We declare no competing interests.

237 References

- 238 1. WHO. Coronavirus disease (COVID-2019) situation reports.
- 239 2. WHO. WHO Director-General's opening remarks at the media briefing on COVID-19.
- 240 3. Yoo, J.-H. The fight against the 2019-nCoV outbreak: an arduous march has just begun. *Journal of*
241 *Korean Medical Science* **2019**, 35.
- 242 4. Shim, E.; Tariq, A.; Choi, W.; Lee, Y.; Gerardo, C. Transmission potential and severity of COVID-19 in
243 South Korea. *International Journal of Infectious Diseases* **2020**, 10.1016/j.ijid.2020.03.031,
244 doi:10.1016/j.ijid.2020.03.031.
- 245 5. KCDC. The Updates of COVID-19 in Republic of Korea. Korea, C.f.D.C.a.P., Ed. 2020.
- 246 6. Association, C.P.M. An update on the epidemiological characteristics of novel coronavirus pneumonia
247 (COVID-19). *Chin J Epidemiol* **2020**, 41, 139-144.
- 248 7. Zhang, S.; Diao, M.; Yu, W.; Pei, L.; Lin, Z.; Chen, D. Estimation of the reproductive number of Novel
249 Coronavirus (COVID-19) and the probable outbreak size on the Diamond Princess cruise ship: A
250 data-driven analysis. *International Journal of Infectious Diseases* **2020**, 93, 201-204.
- 251 8. Lai, A.; Bergna, A.; Acciarri, C.; Galli, M.; Zehender, G. Early phylogenetic estimate of the effective
252 reproduction number of SARS-CoV-2. *Journal of medical virology* **2020**.

- 253 9. Zhou, T.; Liu, Q.; Yang, Z.; Liao, J.; Yang, K.; Bai, W.; Lu, X.; Zhang, W. Preliminary prediction of the
254 basic reproduction number of the Wuhan novel coronavirus 2019-nCoV. *Journal of Evidence-Based*
255 *Medicine* **2020**.
- 256 10. Li, Q.; Guan, X.; Wu, P.; Wang, X.; Zhou, L.; Tong, Y.; Ren, R.; Leung, K.S.; Lau, E.H.; Wong, J.Y. Early
257 transmission dynamics in Wuhan, China, of novel coronavirus–infected pneumonia. *New England*
258 *Journal of Medicine* **2020**.
- 259 11. Mizumoto, K.; Kagaya, K.; Chowell, G. Early epidemiological assessment of the transmission potential
260 and virulence of 2019 Novel Coronavirus in Wuhan City: China, 2019-2020. *medRxiv* **2020**,
261 10.1101/2020.02.12.20022434, 2020.2002.2012.20022434, doi:10.1101/2020.02.12.20022434.
- 262 12. Read, J.M.; Bridgen, J.R.; Cummings, D.A.; Ho, A.; Jewell, C.P. Novel coronavirus 2019-nCoV: early
263 estimation of epidemiological parameters and epidemic predictions. *medRxiv* **2020**.
- 264 13. Wu, J.T.; Leung, K.; Leung, G.M. Nowcasting and forecasting the potential domestic and international
265 spread of the 2019-nCoV outbreak originating in Wuhan, China: a modelling study. *The Lancet* **2020**.
- 266 14. Kwon, K.T.; Ko, J.H.; Shin, H.; Sung, M.; Kim, J.Y. Drive-Through Screening Center for COVID-19: a
267 Safe and Efficient Screening System against Massive Community Outbreak. *Journal of Korean medical*
268 *science* **2020**, *35*, e123, doi:10.3346/jkms.2020.35.e123.
- 269 15. Mizumoto, K.; Chowell, G. Estimating Risk for Death from 2019 Novel Coronavirus Disease, China,
270 January-February 2020. *Emerging infectious diseases* **2020**, *26*, doi:10.3201/eid2606.200233.
- 271 16. Kim, J.Y. Letter to the Editor: Case of the Index Patient Who Caused Tertiary Transmission of
272 Coronavirus Disease 2019 in Korea: the Application of Lopinavir/Ritonavir for the Treatment of
273 COVID-19 Pneumonia Monitored by Quantitative RT-PCR. *Journal of Korean medical science* **2020**, *35*,
274 e88, doi:10.3346/jkms.2020.35.e88.
- 275 17. Mizumoto, K.; Chowell, G. Estimating Risk for Death from 2019 Novel Coronavirus Disease, China,
276 January-February 2020. *Emerging infectious diseases* **2020**, *26*.
- 277 18. Nishiura, H.; Klinkenberg, D.; Roberts, M.; Heesterbeek, J.A. Early epidemiological assessment of the
278 virulence of emerging infectious diseases: a case study of an influenza pandemic. *PloS one* **2009**, *4*,
279 e6852, doi:10.1371/journal.pone.0006852.
- 280 19. Tsuzuki, S.; Lee, H.; Miura, F.; Chan, Y.H.; Jung, S.-m.; Akhmetzhanov, A.R.; Nishiura, H. Dynamics of
281 the pneumonic plague epidemic in Madagascar, August to October 2017. *Eurosurveillance* **2017**, *22*.
- 282 20. Gamerman, D.; Lopes, H.F. *Markov chain Monte Carlo: stochastic simulation for Bayesian inference*; CRC
283 Press: 2006.
- 284 21. Gelman, A.; Rubin, D.B. Inference from iterative simulation using multiple sequences. *Statistical science*
285 **1992**, *7*, 457-472.
- 286 22. Richardson, S.; Hirsch, J.S.; Narasimhan, M.; Crawford, J.M.; McGinn, T.; Davidson, K.W.; and the
287 Northwell, C.-R.C.; Barnaby, D.P.; Becker, L.B.; Chelico, J.D., et al. Presenting Characteristics,
288 Comorbidities, and Outcomes Among 5700 Patients Hospitalized With COVID-19 in the New York
289 City Area. *JAMA : the journal of the American Medical Association* **2020**, 10.1001/jama.2020.6775,
290 doi:10.1001/jama.2020.6775.
- 291 23. Novel Coronavirus Pneumonia Emergency Response Epidemiology, T. [The epidemiological
292 characteristics of an outbreak of 2019 novel coronavirus diseases (COVID-19) in China]. *Zhonghua liu*
293 *xing bing xue za zhi = Zhonghua liuxingbingxue zazhi* **2020**, *41*, 145-151,
294 doi:10.3760/cma.j.issn.0254-6450.2020.02.003.

- 295 24. Wu, J.T.; Leung, K.; Bushman, M.; Kishore, N.; Niehus, R.; de Salazar, P.M.; Cowling, B.J.; Lipsitch, M.;
296 Leung, G.M. Estimating clinical severity of COVID-19 from the transmission dynamics in Wuhan,
297 China. *Nature Medicine* **2020**, 1-5.
- 298 25. Yoo, J.; Chung, M.; Kim, J.; Ko, J.; Kim, Y.; Kim, Y.; Kim, J.; Chung, Y.; Kim, H.; Han, M. Report on the
299 Epidemiological Features of Coronavirus Disease 2019 (COVID-19) Outbreak in the Republic of Korea
300 from January 19 to March 2, 2020.
- 301 26. KCDC. The Updates of COVID-19 in Republic of Korea. Centers for Disease Control and Prevention
302 Korea: 2020.
- 303 27. Lau, E.H.; Hsiung, C.A.; Cowling, B.J.; Chen, C.-H.; Ho, L.-M.; Tsang, T.; Chang, C.-W.; Donnelly, C.A.;
304 Leung, G.M. A comparative epidemiologic analysis of SARS in Hong Kong, Beijing and Taiwan. *BMC*
305 *infectious diseases* **2010**, 10, 50.
- 306 28. Lessler, J.; Salje, H.; Van Kerkhove, M.D.; Ferguson, N.M.; Cauchemez, S.; Rodriguez-Barraquer, I.;
307 Hakeem, R.; Jombart, T.; Aguas, R.; Al-Barrak, A. Estimating the severity and subclinical burden of
308 Middle East respiratory syndrome coronavirus infection in the Kingdom of Saudi Arabia. *American*
309 *journal of epidemiology* **2016**, 183, 657-663.
- 310 29. Wong, J.Y.; Wu, P.; Nishiura, H.; Goldstein, E.; Lau, E.H.; Yang, L.; Chuang, S.; Tsang, T.; Peiris, J.M.;
311 Wu, J.T. Infection fatality risk of the pandemic A (H1N1) 2009 virus in Hong Kong. *American journal of*
312 *epidemiology* **2013**, 177, 834-840.
- 313 30. Kwok, K.O.; Riley, S.; Perera, R.A.; Wei, V.W.; Wu, P.; Wei, L.; Chu, D.K.; Barr, I.G.; Peiris, J.M.;
314 Cowling, B.J. Relative incidence and individual-level severity of seasonal influenza A H3N2 compared
315 with 2009 pandemic H1N1. *BMC infectious diseases* **2017**, 17, 337.
- 316 31. Yang, S.; Cao, P.; Du, P.; Wu, Z.; Zhuang, Z.; Yang, L.; Yu, X.; Zhou, Q.; Feng, X.; Wang, X. Early
317 estimation of the case fatality rate of COVID-19 in mainland China: a data-driven analysis. *Annals of*
318 *Translational Medicine* **2020**, 8.
- 319 32. Garske, T.; Legrand, J.; Donnelly, C.A.; Ward, H.; Cauchemez, S.; Fraser, C.; Ferguson, N.M.; Ghani,
320 A.C. Assessing the severity of the novel influenza A/H1N1 pandemic. *Bmj* **2009**, 339, b2840.
- 321 33. Donnelly, C.A.; Ghani, A.C.; Leung, G.M.; Hedley, A.J.; Fraser, C.; Riley, S.; Abu-Raddad, L.J.; Ho,
322 L.-M.; Thach, T.-Q.; Chau, P. Epidemiological determinants of spread of causal agent of severe acute
323 respiratory syndrome in Hong Kong. *The Lancet* **2003**, 361, 1761-1766.
- 324 34. Chowell, G.; Abdirizak, F.; Lee, S.; Lee, J.; Jung, E.; Nishiura, H.; Viboud, C. Transmission
325 characteristics of MERS and SARS in the healthcare setting: a comparative study. *BMC medicine* **2015**,
326 13, 210.
- 327 35. Abdirizak, F.; Lewis, R.; Chowell, G. Evaluating the potential impact of targeted vaccination strategies
328 against severe acute respiratory syndrome coronavirus (SARS-CoV) and Middle East respiratory
329 syndrome coronavirus (MERS-CoV) outbreaks in the healthcare setting. *Theoretical Biology and Medical*
330 *Modelling* **2019**, 16, 16.
- 331 36. Rothe, C.; Schunk, M.; Sothmann, P.; Bretzel, G.; Froeschl, G.; Wallrauch, C.; Zimmer, T.; Thiel, V.;
332 Janke, C.; Guggemos, W. Transmission of 2019-nCoV infection from an asymptomatic contact in
333 Germany. *New England Journal of Medicine* **2020**.
- 334 37. Liu, Y.-C.; Liao, C.-H.; Chang, C.-F.; Chou, C.-C.; Lin, Y.-R. A locally transmitted case of SARS-CoV-2
335 infection in Taiwan. *New England Journal of Medicine* **2020**, 382, 1070-1072.

- 336 38. Yu, P.; Zhu, J.; Zhang, Z.; Han, Y. A Familial Cluster of Infection Associated With the 2019 Novel
337 Coronavirus Indicating Possible Person-to-Person Transmission During the Incubation Period. *The*
338 *Journal of Infectious Diseases* **2020**.
- 339 39. Mizumoto, K.; Kagaya, K.; Zarebski, A.; Chowell, G. Estimating the asymptomatic proportion of
340 coronavirus disease 2019 (COVID-19) cases on board the Diamond Princess cruise ship, Yokohama,
341 Japan, 2020. *Euro surveillance : bulletin europeen sur les maladies transmissibles = European communicable*
342 *disease bulletin* **2020**, 25, doi:10.2807/1560-7917.ES.2020.25.10.2000180.
- 343 40. Hu, Z.; Song, C.; Xu, C.; Jin, G.; Chen, Y.; Xu, X.; Ma, H.; Chen, W.; Lin, Y.; Zheng, Y. Clinical
344 characteristics of 24 asymptomatic infections with COVID-19 screened among close contacts in
345 Nanjing, China. *Science China Life Sciences* **2020**, 1-6.
- 346