

Children are unlikely to have been the primary source of household SARS-CoV-2 infections

Yanshan Zhu¹, Conor J. Bloxham², Katina D. Hulme¹, Jane E. Sinclair¹, Zhen Wei Marcus Tong¹, Lauren E. Steele¹, Ellesandra C. Noye¹, Jiahai Lu³, Keng Yih Chew¹, Janessa Pickering⁴, Charles Gilks^{5,6}, Asha C. Bowen⁴ & Kirsty R Short^{1,5*}

¹School of Chemistry and Molecular Biosciences, The University of Queensland, Brisbane Australia

²School of Biomedical Science, The University of Queensland, Brisbane, Australia.

³School of Public Health, Sun Yat-sen University, Zhongshan 2nd Road, Guangzhou 510080, Guangdong, China

⁴Wesfarmer's Centre for Vaccines and Infectious diseases, Telethon Kids Institute, Nedlands, Perth, Western Australia

⁵School of Public Health, The University of Queensland, Brisbane Australia

⁶Australian Infectious Diseases Research Centre, The University of Queensland, Brisbane, Australia.

* Corresponding author

YZ: Masters

CJB: Bachelors

KDH: Bachelors

JES: Bachelors

MT: Masters

LES: Bachelors

ECN: Bachelors

JL: PhD

KYC: PhD

JP: PhD

CG: PhD

ACB: PhD

KRS: PhD

School of Chemistry and Molecular Biosciences, The University of Queensland, Brisbane Australia

Phone: +61 7 336 54226

Email: k.short@uq.edu.au

ABSTRACT

BACKGROUND: Since its identification on the 7th of January 2020, SARS-CoV-2 has spread to more than 180 countries worldwide, causing >11,000 deaths. At present, viral disease and transmission amongst children is incompletely understood. Specifically, there is concern that children could be an important source of SARS-CoV-2 in household transmission clusters.

METHODS: We performed an observational study analysing literature published between December 2019 and March 2020 of the clinical features of SARS-CoV-2 in children and descriptions of household transmission clusters of SARS-CoV-2. In these studies the index case of each cluster defined as the individual in the household cluster who first developed symptoms.

FINDINGS: Drawing on studies from China, Singapore, South Korea, Japan, and Iran a broad range of clinical symptoms were observed in children. These ranged from asymptomatic to severe disease. Of the 31 household transmission clusters that were identified, 9.7% (3/31) were identified as having a paediatric index case. This is in contrast other zoonotic infections (namely H5N1 influenza virus) where 54% (30/56) of transmission clusters identified children as the index case.

INTERPRETATION: Whilst SARS-CoV-2 can cause mild disease in children, the data available to date suggests that children have not played a substantive role in the intra-household transmission of SARS-CoV-2.

FUNDING: KRS was supported by the Australian Research Council [DE180100512]. ACB receives funding from the National Health and Medical Research Council with an Investigator Award (1175509). The sponsors of this study had no role in the study design, collection, analysis, and interpretation of data, report writing, or the decision to submit for publication.

INTRODUCTION

On the 31st of December 2019, the World Health Organisation (WHO) was informed of a series of unknown pneumonia cases emerging in Wuhan City, Hubei Province, China. On the 7th of January, 2020 the causative agent of these infections was identified as a novel coronavirus subsequently named SARS-CoV-2. This virus eventually spread to more than 180 different countries worldwide and in March 2020 the WHO declared SARS-CoV-2 a pandemic. At the time of writing (22nd March, 2020) SARS-CoV-2 has infected >274,000 people resulting in >11,000 deaths.¹ Large data analyses have shown that the elderly are particularly susceptible to severe forms of COVID-19 (the clinical manifestation of SARS-CoV-2 infection).² However, disease severity and transmission amongst the paediatric population is less well defined. In an analysis of the 44,672 confirmed COVID-19 cases in China only 2.1% were found to be in children (≤ 19 years of age),² suggesting a reduced rate of infection in this age group. However, this observation remains controversial as others have suggested that the rate of SARS-CoV-2 infection in children under ten (7.4%) is similar to the population average (7.9%).³ The current consensus is that clinical symptoms of COVID-19 are, on average, milder in children (although severe infections can still occur).⁴⁻⁸ Such observations are consistent with the lower incidence of severe disease amongst children following infection with other coronaviruses including severe acute respiratory distress syndrome (SARS) or Middle East respiratory syndrome (MERS).^{9,10} However, this lower incidence of clinical symptoms (and therefore lower incidence of detected disease) raises concerns that children could be an important source of SARS-CoV-2 in household transmission clusters.⁸

To address this question we performed an observational study using currently published literature of the clinical features of SARS-CoV-2 in children and descriptions of household transmission clusters of SARS-CoV-2.

METHODS

Data collection

We retrospectively investigated published and publically released, de-identified, data made available between Dec 1, 2019, and March 18, 2020. Information was accessed from World Health Organization news¹¹, local health authority's news releases, Google Scholar, PubMed, the Lancet COVID-19 resource centre¹², Clinical Infectious Disease Journal, New England Journal of Medicine, and three Chinese databases (CNKI, Wanfang, and CQVIP).

We performed the searching and reviewing using the terms (“severe acute respiratory syndrome coronavirus 2”[All Fields]) OR (“SARS-CoV-2”[All Fields]) OR (“COVID-19”[All Fields]) AND (“Children”[All Fields] OR “Paediatric”[All Fields]) OR (“Family”[MeSH Terms] OR “Family”[All Fields]). To examine H5N1 avian influenza household transmission events, we used search queries “H5N1[All Fields] AND (“Children”[All Fields] OR “Paediatric”[All Fields]) AND (family cluster[All Fields]). A total of 166 articles were

retrieved and reviewed (available in either English or Chinese). Of these, 126 articles were excluded because i) they did not report paediatric infections ii) did not report sufficient individual case data and/or iii) did not report family clusters. Individual paediatric patient data was obtained from the reviewed studies and was only excluded if the individual was recorded as having leukaemia ($n = 1$) or if the blood panel data was descriptive, rather than numerical (e.g. 'elevated platelets') ($n=10$). The intra-household transmission clusters were also sourced from information provided by local health authority's news of China, Europe, France, Germany, Italy, Japan, and South Korea when available. Any intra-household cluster identified in these local sources was included in the study.

SARS-CoV-2 case definition and diagnosis

Case definitions and diagnosis, epidemiological investigation of SARS-CoV-2 cases and laboratory-confirmed test assays were according to the relevant national diagnostic criteria. The incubation period was defined as the time from exposure to the onset of illness, which was estimated among patients who could provide the exact date of close contact with individuals with confirmed SARS-CoV-2 infection.

Definitions of household transmission clusters

A household transmission cluster was defined as a group of ≥ 2 confirmed cases of SARS-CoV-2 or H5N1 influenza virus infection in co-habiting individuals in whom the onset of cases occurred within 2 weeks of each other. Co-habiting individuals were defined as parents, children, partners, siblings, grandparents, grandchildren, uncle/aunts, nieces/nephews, family-in-law and live-in employees. The index case of each cluster was defined as the individual in the household cluster who first developed symptoms. Adults were defined as individuals equal to or over the age of 18 whilst children were defined as individuals less than 18 years of age. The decision tree used to classify household transmission clusters is shown in Figure 1.

Role of the funding source – The sponsors of this study had no role in the study design, collection, analysis, and interpretation of data, report writing, or the decision to submit for publication.

RESULTS

We identified 166 articles that described SARS-CoV-2 infection in children, rejected 126 articles due to a lack of sufficient and or appropriate data and derived a total of 40 articles in addition to case information obtained from local news sources.

A broad range of disease severity was observed (Table 1). Whilst approximately 19% of paediatric cases were asymptomatic, severe cases (12%) were still observed. In children, the predominant symptoms associated with disease onset were fever (77%) and cough (59%), whilst only a minority of children were reported to display fatigue (2%). The majority of children showed abnormal chest computer tomography (CT) although almost 30% of cases had normal chest CTs. The mean incubation period across these studies was $7.74 \text{ d} \pm 3.22$.

Mean complete blood counts were largely unremarkable, with the mean values falling within the normal reference ranges for children aged 6-12 years⁴⁶. (Table 1). In contrast, blood chemistry analysis showed that the mean value of c-reactive protein (18.46 mg/L) was elevated compared to the 10mg/L suggested as the upper limit of the normal reference range for children⁴⁷. Similarly, the mean level of lactate dehydrogenase level detected in the blood of children infected with SARS-CoV-2 (315.75U/L) was elevated relative to the recommended reference range for children aged 1 to 10 years (<305U/L)⁴⁸. Together, these data suggest that SARS-CoV-2 induces a broad range of clinical symptoms in children and can manifest as either an asymptomatic, mild or severe infection.

Asymptomatic infections experienced by children infected with SARS-CoV-2 could have important implications for transmission. Specifically, a number of asymptomatic or mild paediatric cases could result in children driving the intra-household transmission of SARS-CoV-2.⁸ To investigate this hypothesis, we examined the available published data on SARS-CoV-2 household transmission clusters. A total of 31 household transmission clusters were identified with sufficient information available to include in this analysis (Table 2). These cases were drawn from China, Singapore, the USA, Vietnam, and South Korea. Of these transmission clusters, only three (9.7%) were identified as having a paediatric index case (Table 2). Importantly, these data do not suggest that children are not becoming infected with SARS-CoV-2, as isolated paediatric SARS-CoV-2 infections would not be captured in reports of household transmission (and are indeed shown in Table 1). Rather, these data suggest that to date, children have not been the primary source of household SARS-CoV-2 infections.

The limited number of defined SARS-CoV-2 household clusters with children as the index case could have been influenced by the fact that disease in children can be asymptomatic. Accordingly, it is possible that within a household cluster children were not correctly identified as the index case of the infection (i.e. the first to develop symptoms) and were instead mistakenly identified as a contact case. To exclude this possibility, we reanalysed the data looking at the number of families where an adult was identified as the index but one or more children were identified as asymptotically infected (Figure 1). However, even if we assume that all asymptomatic children in these families were in fact the index case, only 6/28 (21%) children were identified as the index case in the household cluster (Table 2). These data suggest that even if children are being mistakenly overlooked as the index case, they are still likely to only have accounted for a limited percentage of household cluster transmissions of SARS-CoV-2.

It is also possible that these data were influenced by the fact that early in the SARS-CoV-2 outbreak, infections were associated with travel to outbreak areas (i.e. initially to Wuhan itself and later to the entirety of the Hubei province). Travel is much more likely to be undertaken by an adult in the family, rather than a child under the age of 16 years, potentially confounding the results. To control for this factor, we reanalysed the data only including household transmission clusters where the index case had no history of travel or the whole family was located in (or had a history of travel) to an outbreak area. This resulted in a total 23 cases, two of which (9%) were identified as having a child as the index case in the cluster.

Finally, we wished to determine if the limited number of paediatric index cases was specific to SARS-CoV-2 or if it was a typical phenomenon associated with zoonotic infections. To do so, we examined 56 family clusters of highly pathogenic H5N1 avian influenza transmission events (Table 3). Here, 54% (30/56) of transmission clusters identified children as the index case. These data suggest that whilst children can facilitate the intra-household transmission of some viral infections, the data available to date suggest that children have not played a substantive role in the intra-household transmission of SARS-CoV-2.

DISCUSSION

Understanding the pathogenesis and transmission of SARS-CoV-2 in children is of paramount importance to reducing the severity of the pandemic and implementing appropriate public health controls.

Here, we analyse previously published literature from China, Singapore, South Korea, Japan, and Iran to show that children infected with SARS-CoV-2 displayed a broad range of clinical characteristics. Whilst some children developed severe disease, others presented asymptotically with normal chest CT findings. These data are consistent with current consensus is that clinical symptoms of COVID-19 are, on average, milder in children (although severe infections can still occur).⁴⁻⁸ Similarly findings have been made in children infected with either SARS or MERS.^{9,10} At present, it remains unclear why children may develop less severe forms of COVID-19. It has been suggested that the receptor for SARS-CoV-2, ACE2, may be expressed at a lower level in children than in adults.¹⁶ Alternatively, these observations may reflect the fact that the paediatric immune system is more adept than that of adults at dealing with infections for which there is no pre-existing immunity.^{58,59} This is reflected in the comparatively mild infections experienced by children upon infection with measles virus and varicella zoster virus.^{60,61} Understanding age-dependent differences in the pathogenesis of SARS-CoV-2 remains a key priority for future research.

We showed that of the 31 recorded SARS-CoV-2 household transmission clusters there were only three incidences of children being identified as the index case in the family. This observation is supported by previous evidence from China, where a study of 66 family transmission clusters showed that children were never the first in the family to be diagnosed with COVID-19.⁶² Similarly, a separate study of 419 household SARS-CoV-2 transmission clusters in China did not detect a single cluster where the index case was under the age of 15, and only three where the index case was under the age of 18.⁶³ Early observations from Wuhan also suggested that children were most likely to be diagnosed with SARS-CoV-2 following an exposure history to a household infection, indicating that even in epidemic areas children were more likely to be contact, rather than index cases.^{64,65} The reasons for these observations remain unclear. These data may reflect an overall lower incidence of infection in children.² Alternatively, these data may reflect altered viral shedding (either in titre or duration) in children or an alternate, less efficient route of virus transmission from infected children to adults.^{24,66} It is also possible that children simply have fewer interactions outside

of the home than adults and are therefore less likely to be index cases. This may be magnified in countries which have implemented school closures in an attempt to control the outbreak. However, it is worth noting that Singapore did not mandate the closure of schools and yet still did not detect any household clusters of transmission of SARS-CoV-2 with children as the index case.^{13,67} Similarly, should children have fewer interactions outside the home it would suggest that children would be unlikely to be the index case in any household transmission event. In contrast, our analysis of household transmission clusters of highly pathogenic H5N1 avian influenza show that children were frequently the index case. Whether this difference simply reflects the different route of transmission of these infections (poultry-to-human vs person-to-person spread) remains to be determined.

There is a growing body of evidence suggesting that asymptomatic individuals play an important role in the transmission of SARS-CoV-2 in the community⁶⁸⁻⁷⁰; However, such studies do not negate the results of the present study, as both children AND adults can present with an asymptomatic infection. This is perhaps best demonstrated by the outbreak of SARS-CoV-2 on board the Diamond Princess cruise ship⁶⁶. Here, 634 individuals were infected. Of these infected individuals, only six were aged 0–19 years, 152 were aged 20–59 years and 476 were 60 years and older. Despite the near absence of children on the ship, 328 of the 634 infected individuals were asymptomatic. These data clearly indicate that asymptomatic infections are not limited to the paediatric population. Therefore, perhaps one of the most effective public health intervention strategies would be to identify and isolate asymptotically infected adults, as it is these individuals who have numerous contacts outside the home and may be contributing to viral spread.

There are important caveats that need to be acknowledged when interpreting these data for public health policy. Our analysis of household transmission clusters was also based on the assumption that the incubation period for SARS-CoV-2 was approximately equivalent in children and adults. Whilst we did not observe any significant difference in the incubation time of infected children and their infected adult relatives (data not shown), others have suggested there might be a longer incubation period for SARS-CoV-2 in children⁷¹. It is also possible that the analysis performed herein was impaired by the policy within particular countries to only test contacts of a known COVID-19 patient when and if they become symptomatic. This could result in the number of asymptotically infected individuals being underestimated. Importantly, China rapidly implemented a policy to test both symptomatic and non-symptomatic contacts, suggesting that this limitation would only apply to transmission clusters detected outside of China. Nevertheless, despite these important limitations, these data suggest that children are unlikely to be driving the household transmission of SARS-CoV-2.

As the global SARS-CoV-2 situation continues to evolve it will be important to validate these data with a larger number of case studies across a wider geographic distribution. It is also possible that as community spread of the virus becomes more common, the transmission dynamics and clinical characteristics of disease will change. However, in the interim our analyses show that, to date, children have not been the primary source of household transmission clusters.

RESEARCH IN CONTEXT

Evidence before this study

Before undertaking this study, evidence published between December 2019 and March 2020 in English or Chinese was considered from data made available between Dec 1, 2019, and March 18, 2020. Information was accessed from World Health Organization news¹¹, local health authority's news releases, Google Scholar, PubMed, the Lancet COVID-19 resource centre¹², Clinical Infectious Disease Journal, New England Journal of Medicine, and three Chinese databases (CNKI, Wanfang, and CQVIP).

We performed the searching and reviewing using the terms (“severe acute respiratory syndrome coronavirus 2”[All Fields]) OR (“SARS-CoV-2”[All Fields]) OR (“COVID-19” [All Fields]) AND (“Children”[All Fields] OR “Paediatric”[All Fields]) OR (“Family”[MeSH Terms] OR “Family”[All Fields]). To examine H5N1 avian influenza household transmission event, we used search queries “H5N1[All Fields] AND (“Children”[All Fields] OR “Paediatric”[All Fields]) AND (family cluster[All Fields])”. A total of 166 articles were retrieved and reviewed. Of these, 126 articles were excluded because i) they did not report paediatric infections ii) did not report sufficient individual case data and/or iii) did not report family clusters. The intra-household transmission clusters were also sourced from information provided by local health authority's news of China, Europe, France, Germany, Italy, Japan, and South Korea when available. Any intra-household cluster identified in these local sources was included in the study.

Added value of this study

Our findings add value to the existing body of evidence by not only supporting previous suggestions that COVID-19 can have numerous different clinical manifestations in children but also suggesting that, to date, children have not driven the household transmission of SARS-CoV-2.

Implications of all the available evidence

Understanding the pathogenesis and transmission of SARS-CoV-2 in children is of paramount importance to reducing the severity of the pandemic and implementing appropriate public health controls. Specifically, our findings hold important implications for policies regarding school and day-care closures during this period. As the global SARS-CoV-2 situation continues to evolve it will be important to validate these data with a larger number of case studies across a wider geographic distribution

FUNDING

KRS was supported by the Australian Research Council [DE180100512]. ACB receives funding from the National Health and Medical Research Council with an Investigator Award (1175509).

CONTRIBUTIONS

YZ and KRS contributed to data acquisition; study design; data analysis; manuscript writing and revising. CJB contributed to data analysis; manuscript writing and revising. KDH contributed to data acquisition; data analysis; manuscript writing and revising. JES contributed to data acquisition; data analysis; manuscript revising. MT, LES, ECN, JL contributed to data acquisition; data analysis. KYC contributed to the study design; data acquisition; data analysis. JLP contributed to data interpretation and critical review of the manuscript. CG contributed to the contributed to critical review of the manuscript. ACB contributed to critical review of the manuscript and reviewed for clinical content.

DECLARATION OF INTERESTS

No conflict of interests to declare.

REFERENCES

1. Worldometer Coronavirus Update (Live). Accessed 22 March 2020 at: <https://www.worldometers.info/coronavirus/>.
2. Surveillances V. The epidemiological characteristics of an outbreak of 2019 novel coronavirus diseases (COVID-19)-China, 2020. *China CDC Weekly* 2020; **2**: 113–22.
3. Bi Q, Wu Y, Mei S, et al. Epidemiology and transmission of COVID-19 in Shenzhen China: Analysis of 391 cases and 1,286 of their close contacts. *medRxiv* 2020; <https://doi.org/10.1101/2020.03.03.20028423>
4. Cao Q, Chen YC, Chen CL, Chiu CH. SARS-CoV-2 infection in children: Transmission dynamics and clinical characteristics. *J Formos Med Assoc* 2020; **119**: 670–3.
5. Liu W, Zhang Q, Chen J, et al. Detection of Covid-19 in children in early January 2020 in Wuhan, China. *N Engl J Med* 2020; <https://doi.org/10.1056/NEJMc2003717>
6. Lu X, Zhang L, Du H, et al. SARS-CoV-2 infection in children. *N Engl J Med* 2020; <https://doi.org/10.1056/NEJMc2005073>
7. Sun D, Li H, Lu X-X, et al. Clinical features of severe pediatric patients with coronavirus disease 2019 in Wuhan: a single center’s observational study. *World J Pediatr* 2020; <https://doi.org/10.1007/s12519-020-00354-4>
8. Chen C, Cao M, Peng L, et al. Coronavirus disease-19 among children outside Wuhan, China (2/25/2020). *SSRN* 2020; <https://ssrn.com/abstract=3546071>
9. Thabet F, Chehab M, Bafaqih H, AlMohaimed S. Middle East respiratory syndrome coronavirus in children. *Saudi Med J* 2015; **36**: 484–6.
10. Hon KL, Leung CW, Cheng WT, et al. Clinical presentations and outcome of severe acute respiratory syndrome in children. *The Lancet* 2003; **361**: 1701–3.
11. World Health Organisation Global research on coronavirus disease (COVID-19). Accessed 22 March 2020 at: <https://www.who.int/emergencies/diseases/novel-coronavirus-2019/global-research-on-novel-coronavirus-2019-ncov>
12. The Lancet COVID-19 Resource Centre. Accessed 22 March 2020 at: <https://www.thelancet.com/coronavirus> Accessed 22 Mar 2020
13. Channel News Asia Infographic of Covid-19 cases in Singapore. Accessed 22 March 2020 at: https://infographics.channelnewsasia.com/covid-19/coronavirus-singapore-clusters.html?cid=h3_referral_inarticlelinks_24082018_cna

14. Hong H, Wang Y, Chung H-T, Chen C-J. Clinical characteristics of novel coronavirus disease 2019 (COVID-19) in newborns, infants and children. *Pediatr Neonatol* 2020; <https://doi.org/10.1016/j.pedneo.2020.03.001>
15. Xing Y, Ni W, Wu Q, et al. Prolonged presence of SARS-CoV-2 in feces of pediatric patients during the convalescent phase. *medRxiv* 2020; <https://doi.org/10.1101/2020.03.11.20033159>
16. Dong Y, Mo X, Hu Y, et al. Epidemiological characteristics of 2143 pediatric patients with 2019 coronavirus disease in China. *Pediatrics* 2020; <https://doi.org/10.1542/peds.2020-0702>
17. Cui Y, Tian M, Huang D, et al. A 55-day-old female infant infected with COVID 19: presenting with pneumonia, liver injury, and heart damage. *Journal Infect Dis* 2020; <https://doi.org/10.1093/infdis/jiaa113>
18. Zhang YH, Lin DJ, Xiao MF, et al. 2019-novel coronavirus infection in a three-month-old baby. *Zhonghua Er Ke Za Zhi* 2020; <https://doi.org/10.3760/cma.j.issn.0578-1310.2020.0006>
19. Liu Miao, Wan Xi, Tu Xiaoyan, et al. Analysis of a novel coronavirus infection in a family clustered child. *Wuhan University Journal (Medical Science)* 2020.
20. Pan X, Chen D, Xia Y, et al. Asymptomatic cases in a family cluster with SARS-CoV-2 infection. *The Lancet Infect Dis* 2020; [https://doi.org/10.1016/S1473-3099\(20\)30114-6](https://doi.org/10.1016/S1473-3099(20)30114-6)
21. Quan S, Li X, Ding D, Sun S, Guilin S. A case of children with new coronavirus infection in Liaoning Province. *Chinese J Pediatr Emerg Med* 2020; **27**.
22. Wang S, Guo L, Chen L, et al. A case report of neonatal COVID-19 infection in China. *Clin Infect Dis* 2020; <https://doi.org/10.1093/cid/ciaa225>
23. Cai J, Xu J, Lin D, et al. A case series of children with 2019 novel coronavirus infection: clinical and epidemiological features. *Clin Infect Dis* 2020; <https://doi.org/10.1093/cid/ciaa198>
24. Xu Y, Li X, Zhu B, et al. Characteristics of pediatric SARS-CoV-2 infection and potential evidence for persistent fecal viral shedding. *Nat Med* 2020. <https://doi.org/10.1038/s41591-020-0817-4>
25. Li W, Cui H, Li K, Fang Y, Li S. Chest computed tomography in children with COVID-19 respiratory infection. *Pediatr Radiol* 2020; <https://doi.org/10.1007/s00247-020-04656-7>
26. Liu H, Liu F, Li J, Zhang T, Wang D, Lan W. Clinical and CT imaging features of the COVID-19 pneumonia: Focus on pregnant women and children. *J Infect* 2020; <https://doi.org/10.1016/j.jinf.2020.03.007>
27. Hu Z, Song C, Xu C, et al. Clinical characteristics of 24 asymptomatic infections with COVID-19 screened among close contacts in Nanjing, China. *Sci China Life Sci* 2020; <https://doi.org/10.1007/s11427-020-1661-4>
28. Guan W-J, Ni Z-Y, Hu Y, et al. Clinical characteristics of coronavirus disease 2019 in China. *New Engl J Med* 2020; <https://doi.org/10.1056/NEJMoa2002032>
29. Ji LN, Chao S, Wang YJ, et al. Clinical features of pediatric patients with COVID-19: a report of two family cluster cases. *World J Pediatr* 2020; <https://doi.org/10.1007/s12519-020-00356-2>
30. Rahimzadeh G, Ekrami NM, Kadkhodaei EF, et al. COVID-19 infection in Iranian children: A case series of 9 patients. *JPR* 2020; **8**: 139–44.
31. An T, Zhen-Dong T, Hong-Ling W, et al. Detection of novel coronavirus by RT-PCR in stool specimen from asymptomatic child, China. *Emerg Infect Dis* 2020; <https://doi.org/10.3201/eid2606.200301>
32. Qiu Y, Wang S, Wang X, et al. Epidemiological analysis of a family epidemic of new coronavirus pneumonia. *Chinese J Epidemiol* 2020; **41**.

33. Chan JF-W, Yuan S, Kok K-H, et al. A familial cluster of pneumonia associated with the 2019 novel coronavirus indicating person-to-person transmission: a study of a family cluster. *The Lancet* 2020; **395**: 514–23.
34. Cai JH, Wang XS, Ge YL, et al. First case of 2019 novel coronavirus infection in children in Shanghai. *Zhonghua Er Ke Za Zhi* 2020; <https://doi.org/10.3760/cma.j.issn.0578-1310.2020.0002>
35. Zeng LK, Tao XW, Yuan WH, Wang J, Liu X, Liu ZS. First case of neonate infected with novel coronavirus pneumonia in China. *Zhonghua Er Ke Za Zhi* 2020; <https://doi.org/10.3760/cma.j.issn.0578-1310.2020.0009>
36. Chen F, Liu ZS, Zhang FR, et al. First case of severe childhood novel coronavirus pneumonia in China. *Zhonghua Er Ke Za Zhi* 2020; <https://doi.org/10.3760/cma.j.issn.0578-1310.2020.0005>
37. Park JY, Han MS, Park KU, Kim JY, Choi EH. First pediatric case of coronavirus disease 2019 in Korea. *J Korean Med Sci* 2020; <https://doi.org/10.3346/jkms.2020.35.e124>
38. Wei M, Yuan J, Liu Y, Fu T, Yu X, Zhang ZJ. Novel coronavirus infection in hospitalized infants under 1 year of age in China. *JAMA* 2020; <https://doi.org/10.1001/jama.2020.2131>
39. Zhang G, Zhang A, Huang L, et al. A pair of twin girls are infected with the new coronavirus at the same time. *China J Contemp Pediatr* 2020; **22**: 221–5.
40. Zhen-Dong T, An T, Ke-Feng L, et al. Potential presymptomatic transmission of SARS-CoV-2, Zhejiang Province, China, 2020. *Emerg Infect Dis* 2020; <https://doi.org/10.3201/eid2605.200198>
41. Chen Q, Quan B, Li X, et al. A report of clinical diagnosis and treatment of nine cases of coronavirus disease 2019. *J Med Virol* 2020; <https://doi.org/10.1002/jmv.25755>
42. Deng H, Zhang Y, Wang Y, Feiyu L. Two cases of children with new coronavirus infection. *Chinese J Pediatr Emerg Med* 2020; **27**: 81-3.
43. Jiang J, Feng Y, Hongzhou X, Yu J, Peng Z, Chunhui L. Two cases of children with new coronavirus pneumonia. *Chinese J Pediatr Emerg Med* 2020; **27**.
44. Kam K-Q, Yung CF, Cui L, et al. A well infant with coronavirus disease 2019 (COVID-19) with high viral load. *Clin Infect Dis* 2020; <https://doi.org/10.1093/cid/ciaa201>
45. Models of Infectious Disease Agent Study (MIDAS) - COVID-19 Datasheet. Accessed 22 March 2020 at: https://github.com/midas-network/COVID-19/blob/master/data/cases/global/line_listings_nihfogarty/2020_02_24_1800EST_linelist_NIHfogarty.csv?fbclid=IwAR0hVtUYWWRp9HBFg0vrajCQnJExT17lpK-PRYBiqTKSVvp4qGufOCU5uf8
46. Children's Reference Ranges for FBC. Accessed 22 March 2020 at: <https://www.nbt.nhs.uk/sites/default/files/Childrens%20FBC%20Reference%20Ranges.pdf>
47. Schlenz, H., Intemann, T., Wolters, M. et al. C-reactive protein reference percentiles among pre-adolescent children in Europe based on the IDEFICS study population. *Int J Obes* 38, S26–S31 (2014). <https://doi.org/10.1038/ijo.2014.132>
48. Gloucestershire Hospitals. Accessed 22 March 2020 at: <https://www.gloshospitals.nhs.uk/our-services/services-we-offer/pathology/tests-and-investigations/lactate-dehydrogenase-ldh/>
49. Huang C, Wang Y, Li X, et al. Clinical features of patients infected with 2019 novel coronavirus in Wuhan, China. *The Lancet* 2020; **395**: 497-506. [https://doi.org/10.1016/S0140-6736\(20\)30211-7](https://doi.org/10.1016/S0140-6736(20)30211-7)
50. Ghinai I, McPherson TD, Hunter JC, et al. First known person-to-person transmission of severe acute respiratory syndrome coronavirus 2 (SARS-CoV-2) in the USA. *The Lancet* 2020; [https://doi.org/10.1016/S0140-6736\(20\)30607-3](https://doi.org/10.1016/S0140-6736(20)30607-3)

51. Phan LT, Nguyen TV, Luong QC, et al. Importation and human-to-human transmission of a novel coronavirus in Vietnam. *N Engl J Med* 2020; 382: 872–4.
52. Pung R, Chiew CJ, Young BE, et al. Investigation of three clusters of COVID-19 in Singapore: implications for surveillance and response measures. *The Lancet* 2020; [https://doi.org/10.1016/S0140-6736\(20\)30528-6](https://doi.org/10.1016/S0140-6736(20)30528-6)
53. Bai Y, Yao L, Wei T, et al. Presumed asymptomatic carrier transmission of COVID-19. *JAMA* 2020; <https://doi.org/10.1001/jama.2020.2565>
54. Chan PK. Outbreak of avian influenza A(H5N1) virus infection in Hong Kong in 1997. *Clin Infect Dis* 2002; **34**: 58–64.
55. Peiris JS, Yu WC, Leung CW, et al. Re-emergence of fatal human influenza A subtype H5N1 disease. *The Lancet* 2004; **363**: 617–19.
56. Cowling BJ, Jin L, Lau EH, et al. Comparative epidemiology of human infections with avian influenza A H7N9 and H5N1 viruses in China: a population-based study of laboratory-confirmed cases. *The Lancet* 2013; **382**: 129–37.
57. Qin Y, Horby PW, Tsang TK, et al. Differences in the epidemiology of human cases of avian influenza A(H7N9) and A(H5N1) viruses infection. *Clin Infect Dis* 2015; **61**: 563–71.
58. Reuters - Italy's coronavirus deaths surge by 627 in a day, elderly at high risk. Accessed 22 March 2020 at: <https://www.reuters.com/article/us-health-coronavirus-italy-tally/italys-coronavirus-deaths-surge-by-627-in-a-day-elderly-at-high-risk-idUSKBN2172VL>
59. Shaw AC, Goldstein DR, Montgomery RR. Age-dependent dysregulation of innate immunity. *Nat Rev Immunol* 2013; **13**: 875–87.
60. Simon AK, Hollander GA, McMichael A. Evolution of the immune system in humans from infancy to old age. *Proc Biol Sci* 2015; **282**: 20143085.
61. Miller DL. Frequency of complications of measles, 1963. *Br Med J* 1964; **2**: 75-8.
62. Tunbridge AJ, Breuer J, Jeffery KJM. Chickenpox in adults - Clinical management. *J Infect* 2008; **57**: 95-102.
63. Ma H, Hu J, Tian J, et al. Visualizing the novel coronavirus (COVID-19) in children: What we learn from patients at Wuhan Children's Hospital. *SSRN*, 2020; <https://ssrn.com/abstract=3550012>
64. Liu X, Wu Y, Ali ST. Close contacts and household transmission of SARS-CoV-2 in China: a content analysis based on local Health Commissions' public disclosures. *medRxiv*, 2020; <https://doi.org/10.1101/2020.03.02.20029868>
65. Report of the WHO-China Joint Mission on Coronavirus Disease 2019 (COVID-19). Accessed 22 March 2020 at: <https://www.who.int/docs/default-source/coronaviruse/who-china-joint-mission-on-covid-19-final-report.pdf>
66. Yang P, Liu P, Li D, Zhao D. Corona Virus Disease 2019, a growing threat to children? *J Infect*, 2020; <https://doi.org/10.1016/j.jinf.2020.02.024>
67. Lee VJ, Chiew CJ, Khong WX. Interrupting transmission of COVID-19: Lessons from containment efforts in Singapore. *J Trav Med* 2020; <https://doi.org/10.1093/jtm/taaa039>
68. Nishiura H, Kobayashi T, Suzuki A, et al. Estimation of the asymptomatic ratio of novel coronavirus infections (COVID-19) [published online ahead of print, 2020 Mar 13]. *Int J Infect Dis*. 2020; <https://doi.org/10.1016/j.ijid.2020.03.020>
69. Mizumoto K, Kagaya K, Zarebski A, Chowell G. Estimating the asymptomatic proportion of coronavirus disease 2019 (COVID-19) cases on board the Diamond Princess cruise ship, Yokohama, Japan, 2020. *Euro Surveill*. 2020; <https://doi.org/10.2807/1560-7917.ES.2020.25.10.2000180>
70. Wang C, Liu L, Hao X, et al. Evolving Epidemiology and Impact of Non-pharmaceutical Interventions on the Outbreak of Coronavirus Disease 2019 in Wuhan, China. *medRxiv*, 2020; <https://doi.org/10.1101/2020.03.03.20030593>

71. Lauer SA, Grantz KH, Bi Q, et al. The incubation period of coronavirus disease 2019 (COVID-19) from publicly reported confirmed cases: Estimation and application. *Ann Intern Med*, 2020; <https://doi.org/10.7326/M20-0504>

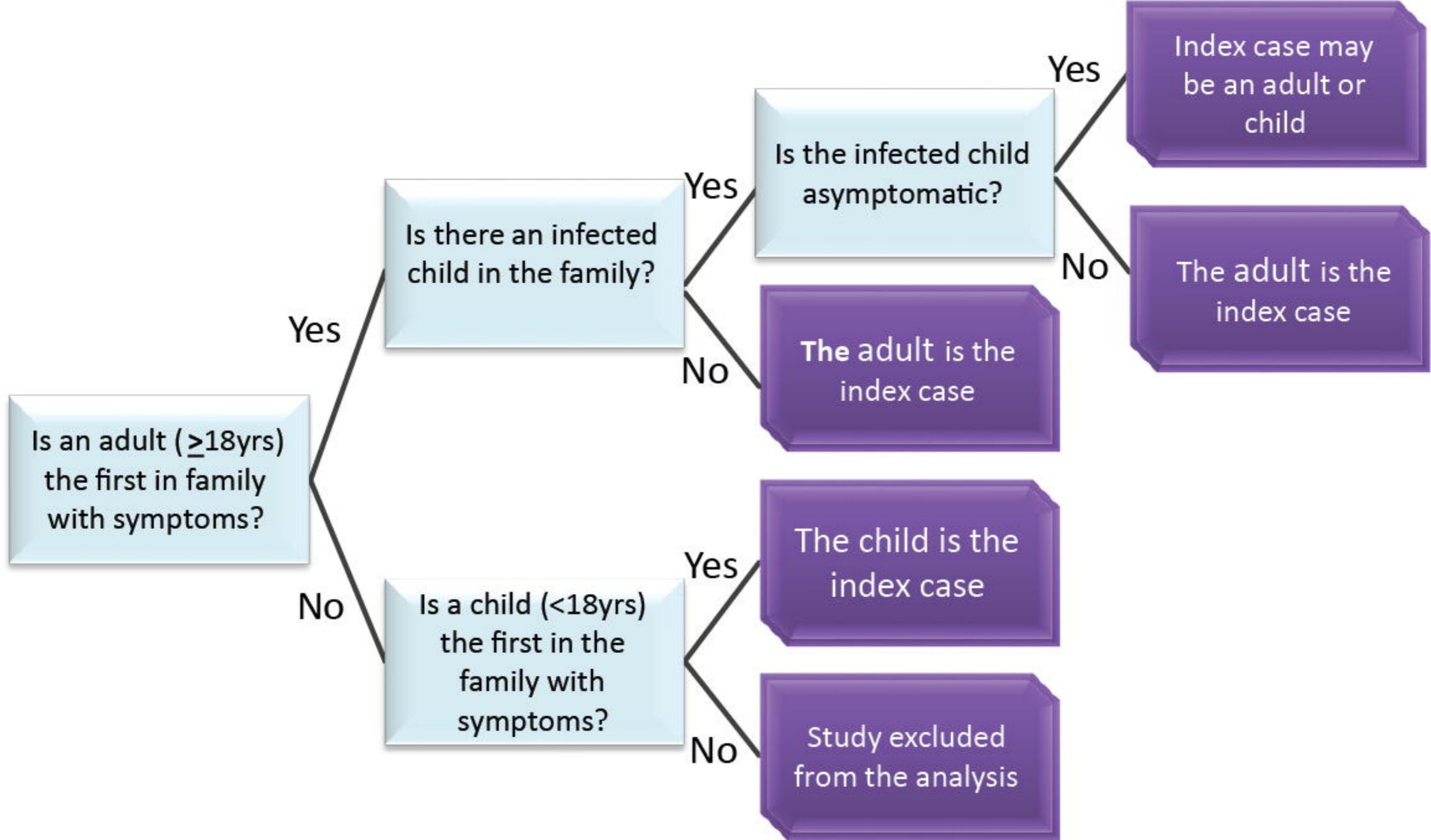


Table 1: Clinical characteristics of SARS-CoV-2 in children

| Characteristic | Value |
|--|--|
| Age (n = 103) | 5.35 y ± 4.65 (n = 103) |
| Sex (n = 105) | 56.19% female (n = 105) |
| Severity of infection (n = 102) | 19% Asymptomatic 69% Mild - Moderate 12% Severe |
| Onset symptoms (n = 81) | 77% Fever 59% Cough 17% Runny Nose/ Rhinorrhea 12% Tachypnea 12% Nausea/ vomiting 12% Sore Throat 11% Chills 11% Retraction 6% Diarrhoea 2% Fatigue/ Myalgia/weakness |
| Temperature at hospital admission (n = 71) | 37.5 °C ± 3.78 |
| CT Findings (n = 89) | 33.71% Opacities 29.21% Normal 29.21% Patch Shadows 12.36% Consolidations 3.37% Signs of Viral Infection/ Pneumonia |
| Average incubation period | 7.74 d ± 3.22 |
| Haemoglobin | 15.88 ± 15.21 g/dL (n = 48) |
| White Blood Cells | 7.63 ± 3.49 x 10 ⁹ / L (n = 61) |
| Neutrophil Count | 3.55 ± 2.96 x 10 ⁹ / L (n = 47) |
| Lymphocyte Count | 2.9 ± 1.8 x 10 ⁹ / L (n = 48) |
| Platelet Count | 262.16 ± 91 x 10 ⁹ /L (n = 44) |
| C-Reactive Protein Level | 18.47 ± 25.74 mg/L (n = 48) |
| D-dimer | 1.78 ± 7.44 µg/mL (n = 29) |
| Alanine Aminotransferase | 29.95 ± 33.88 U/L (n = 38) |
| Creatinine | 41.7 ± 37.11 µmol/L (n = 31) |
| Lactate Dehydrogenase | 315.75 ± 182.36 U/L (n = 35) |

¹Data sourced from multiple studies.^{5,7,13,15,17-45}

Table 2: Household transmission clusters of SARS-CoV-2

| Cluster | Country | Province (China) or city (outside China) | Age | Sex | Relation to Index case | Laboratory (L) or clinically | Symptomatic infection? | History of travel? | Source |
|---------|---------|--|------|-----|------------------------|------------------------------|------------------------|------------------------------|---------------|
| 1 | China | Guangdong | 35 y | M | Index | L | Y | Yes – travel to Wuhan | ²⁰ |
| 1 | China | Guangdong | 33 y | F | Wife | L | N | Yes – travel to Wuhan | ²⁰ |
| 1 | China | Guangdong | 3 y | M | Son | L | N | Yes – travel to Wuhan | ²⁰ |
| 2 | China | Hubei | 9 y | M | Index | L | Y | No – local resident of Wuhan | ¹⁹ |
| 2 | China | Hubei | 71 y | F | Grandmother | L | Y | No – local resident of Wuhan | ¹⁹ |
| 2 | China | Hubei | 31 y | F | Mother | L | Y | No – local resident of Wuhan | ¹⁹ |
| 3 | China | Guangdong | 65 y | F | Index | L | Y | Yes – travel to Wuhan | ³³ |
| 3 | China | Guangdong | 66 y | M | Father | L | Y | Yes – travel to Wuhan | ³³ |

| | | | | | | | | | |
|---|-------|-----------|------|---|----------------------|---|---|-----------------------|----|
| 3 | China | Guangdong | 37 y | F | Daughter | L | Y | Yes – travel to Wuhan | 33 |
| 3 | China | Guangdong | 36 y | M | Son-in-law | L | Y | Yes – travel to Wuhan | 33 |
| 3 | China | Guangdong | 10 y | M | Grandson | L | N | Yes – travel to Wuhan | 33 |
| 3 | China | Guangdong | 7 y | F | Granddaughter | C | N | Yes – travel to Wuhan | 33 |
| 3 | China | Guangdong | 63 y | F | Mother of son-in-law | L | Y | No | 33 |
| 4 | China | Guangdong | 36 y | M | Index | L | Y | Yes – travel to Wuhan | 49 |
| 4 | China | Guangdong | 38 y | F | Wife | L | Y | No | 49 |
| 4 | China | Guangdong | 60 y | F | Mother | L | Y | No | 49 |
| 4 | China | Guangdong | 62 y | M | Father | L | Y | No | 49 |
| 4 | China | Guangdong | 3 y | M | Son | L | Y | No | 49 |

| | | | | | | | | | |
|---|-------|-----------|------|---|-----------------|---|---|------------------------------|----|
| 5 | China | Guangdong | 58 y | F | Index | L | Y | Yes – travel to Hubei | 49 |
| 5 | China | Guangdong | 38 y | M | Son | L | Y | No | 49 |
| 5 | China | Guangdong | 33 y | F | Daughter-in-law | L | Y | No | 49 |
| 5 | China | Guangdong | 16 m | M | Grandson | L | Y | Yes – travel to Hubei | 49 |
| 6 | China | Guangdong | 59 y | M | Index | L | Y | No – local resident of Wuhan | 49 |
| 6 | China | Guangdong | 10 m | F | Granddaughter | L | Y | No – local resident of Wuhan | 49 |
| 6 | China | Guangdong | 57 y | F | Wife | L | Y | No – local resident of Wuhan | 49 |
| 6 | China | Guangdong | 38 y | M | Son-in-law | L | N | No – local resident of Wuhan | 49 |
| 7 | China | Guangdong | 32 y | F | Index | L | Y | No – local resident of Wuhan | 49 |
| 7 | China | Guangdong | 6 y | M | Son | L | N | No – local resident of Wuhan | 49 |

| | | | | | | | | | |
|----|-----------|------------------|---------|---|---------|---|---|-----------------------|----|
| 8 | China | Zhejiang | 29 y | M | Index | L | Y | No | 40 |
| 8 | China | Zhejiang | 28 y | F | Wide | L | N | No | 40 |
| 9 | China | Zhejiang | 42 y | M | Index | L | Y | No | 40 |
| 9 | China | Zhejiang | 41 y | F | Wife | L | N | No | 40 |
| 9 | China | Zhejiang | 12 y | M | Son | L | N | No | 40 |
| 10 | USA | Illinois | 60-70 y | F | Index | L | Y | Yes – travel to Wuhan | 50 |
| 10 | USA | Illinois | .. | M | Husband | L | Y | No | 50 |
| 11 | Vietnam | Ho Chi Minh City | 65 y | M | Index | L | Y | Yes – travel to Wuhan | 51 |
| 11 | Vietnam | Ho Chi Minh City | 27 y | M | Son | L | Y | No | 51 |
| 12 | Singapore | Singapore | 28 y | F | Index | L | Y | No | 52 |

| | | | | | | | | | |
|----|-----------|-----------|------|---|-----------------|---|---|------------------------|----|
| 12 | Singapore | Singapore | 45 y | M | Husband | L | Y | No | 52 |
| 12 | Singapore | Singapore | 44 y | F | Domestic helper | L | Y | No | 52 |
| 12 | Singapore | Singapore | 6 m | M | Son | L | Y | No | 52 |
| 13 | Singapore | Singapore | 42 y | M | Index | L | Y | No | 52 |
| 13 | Singapore | Singapore | 40 y | F | Sister | L | Y | No | 52 |
| 13 | Singapore | Singapore | 65 y | F | Mother-in-law | L | Y | No | 52 |
| 14 | Singapore | Singapore | 86 y | M | Index | L | Y | No | 13 |
| 14 | Singapore | Singapore | 57 y | M | Family member | L | Y | No | 13 |
| 14 | Singapore | Singapore | 80 y | F | Family member | L | Y | No | 13 |
| 15 | Singapore | Singapore | 30 y | M | Index | L | Y | Yes – travel to France | 13 |

| | | | | | | | | | |
|----|-------------|------------|---------|---|---------------|---|---|-----------------------|----|
| 15 | Singapore | Singapore | 62 y | F | Family member | L | Y | No | 13 |
| 16 | Japan | Saitama | 40-50 y | M | Index | L | Y | Yes – travel to Wuhan | 45 |
| 16 | Japan | Saitama | 3-6 y | M | Son | L | Y | Yes – travel to Wuhan | 45 |
| 17 | Japan | Nakafurano | <10 y | M | Index | L | Y | No | 45 |
| 17 | Japan | Nakafurano | 10 y | M | Older brother | L | Y | No | 45 |
| 18 | South Korea | Seoul | Adult | M | Index | L | Y | Yes – travel to Wuhan | 37 |
| 18 | South Korea | Seoul | Adult | F | Sister | L | Y | No | 37 |
| 18 | South Korea | Seoul | 10 | F | Niece | L | Y | No | 37 |
| 19 | China | Sichuan | Adult | F | Index | C | Y | No | 39 |
| 19 | China | Sichuan | 7 m | F | Daughter | C | Y | No | 39 |

| | | | | | | | | | |
|----|-------|---------|-------|---|-----------------|---|---|------------------------------|----|
| 19 | China | Sichuan | Adult | F | Mother-in-law | C | Y | No | 39 |
| 19 | China | Sichuan | Adult | M | Husband | C | N | No | 39 |
| 20 | China | Sichuan | Adult | M | Index | C | Y | Yes – chartered out of Wuhan | 39 |
| 20 | China | Sichuan | 5 y | M | Son | C | Y | No | 39 |
| 20 | China | Sichuan | Adult | F | Wife | C | Y | No | 39 |
| 21 | China | Hunan | 53 y | M | Index | C | Y | Yes – travel to Wuhan | 32 |
| 21 | China | Hunan | Adult | F | Wife | C | Y | No | 32 |
| 21 | China | Hunan | 28 y | M | Son | C | Y | No | 32 |
| 21 | China | Hunan | 28 y | F | Daughter-in-law | C | Y | No | 32 |
| 21 | China | Hunan | 34 y | M | Son-in-law | C | Y | No | 32 |

| | | | | | | | | | |
|----|-------|-----------|----------|---|---------------|-------|---|------------------------------|----|
| 21 | China | Hunan | 32 y | F | Daughter | C | Y | No | 32 |
| 21 | China | Hunan | 4 y | M | Grandson | C | Y | No | 32 |
| 21 | China | Hunan | 4 y | F | Granddaughter | C | Y | No | 32 |
| 22 | China | Guangdong | 43 y | F | Index | C | Y | Yes – chartered out of Wuhan | 49 |
| 22 | China | Guangdong | 42 y | M | Husband | C | Y | No | 49 |
| 22 | China | Guangdong | 15 y | M | Son | C | Y | No | 49 |
| 23 | China | Hainan | 3 m 19 d | F | Index | L | Y | Exposure to an epidemic area | 23 |
| 23 | China | Hainan | Adult | M | Father | L | Y | .. | 23 |
| 23 | China | Hainan | Adult | F | Mother | L | N | .. | 23 |
| 24 | China | Henan | 20 y | F | Index | L + C | N | Yes – chartered out of Wuhan | 53 |

| | | | | | | | | | |
|----|-----------|-----------|---------|----|---------------|-------|---|--------------------------|----|
| 24 | China | Henan | 42-57 y | .. | Family member | L + C | Y | No | 53 |
| 25 | Singapore | Singapore | 64 y | M | Index | L | Y | No | 13 |
| 25 | Singapore | Singapore | 59 y | F | Family member | L | Y | No | 13 |
| 26 | Singapore | Singapore | 71 y | M | Index | L | Y | No | 13 |
| 26 | Singapore | Singapore | 71 y | F | Family member | L | Y | No | 13 |
| 27 | Singapore | Singapore | 62 y | M | Index | L | Y | No | 13 |
| 27 | Singapore | Singapore | 30 y | M | Family member | L | Y | No | 13 |
| 27 | Singapore | Singapore | 61 y | F | Family member | L | Y | No | 13 |
| 28 | Singapore | Singapore | 23 y | F | Index | L | Y | Yes – travel to Malaysia | 13 |
| 28 | Singapore | Singapore | 27 y | M | Family member | L | Y | Yes – travel to Malaysia | 13 |

| | | | | | | | | | |
|----|-----------|-----------|------|---|---------------|---|---|---------------------------|----|
| 29 | Singapore | Singapore | 40 y | M | Index | L | Y | No | 13 |
| 29 | Singapore | Singapore | 35 y | M | Family member | L | Y | No | 13 |
| 30 | Singapore | Singapore | 27 y | M | Index | L | Y | Yes – travel to Indonesia | 13 |
| 30 | Singapore | Singapore | 26 y | M | Family member | L | Y | Yes – travel to Indonesia | 13 |
| 31 | Singapore | Singapore | 32 y | F | Index | L | Y | No | 13 |
| 31 | Singapore | Singapore | 40 y | M | Husband | L | Y | No | 13 |

*F, female; M, male; Y, Yes; N, No

Table 3: Household transmission clusters of highly pathogenic avian influenza H5N1

| Cluster | Onset of index case | Country | Age(y) | Sex | Relation to Index Case | Source |
|---------|---------------------|-----------|--------|-----|------------------------|--------|
| 1 | Dec-97 | China, HK | 5 | F | Index | 54 |
| 1 | Dec-97 | China, HK | 2 | M | Cousin | 54 |
| 2 | Jan-03 | China, HK | 8 | F | Index | 55 |
| 2 | Jan-03 | China, HK | 33 | M | Father | 55 |
| 2 | Jan-03 | China, HK | 9 | M | Sibling | 55 |
| 3 | Dec-03 | Vietnam | 12 | F | Index | 56,57 |
| 3 | Dec-03 | Vietnam | 30 | F | Mother | 56,57 |
| 4 | Dec-03 | Vietnam | 7 | F | Index | 56,57 |
| 4 | Dec-03 | Vietnam | 5 | M | Sibling | 56,57 |
| 5 | Jan-04 | Vietnam | 31 | M | Index | 56,57 |
| 5 | Jan-04 | Vietnam | 30 | F | Sibling | 56,57 |
| 5 | Jan-04 | Vietnam | 28 | F | Wife | 56,57 |
| 5 | Jan-04 | Vietnam | 23 | F | Sibling | 56,57 |
| 6 | Jan-04 | Thailand | 6 | M | Index | 56,57 |
| 6 | Jan-04 | Thailand | 33 | F | Mother | 56,57 |
| 7 | Jan-04 | Vietnam | 9 | F | Index | 56,57 |
| 7 | Jan-04 | Vietnam | 4 | M | Sibling | 56,57 |
| 8 | Jul-04 | Vietnam | 19 | M | Index | 56,57 |
| 8 | Jul-04 | Vietnam | 22 | F | Cousin | 56,57 |
| 8 | Jul-04 | Vietnam | 23 | F | Sibling | 56,57 |
| 9 | Sep-04 | Thailand | 11 | F | Index | 56,57 |
| 9 | Sep-04 | Thailand | 26 | F | Mother | 56,57 |

| | | | | | | |
|----|--------|-----------|-------|---|------------|-------|
| 9 | Sep-04 | Thailand | 32 | F | Aunt | 56,57 |
| 9 | Sep-04 | Thailand | 6 | M | Aunt's son | 56,57 |
| 10 | Dec-04 | Vietnam | 42 | M | Index | 56,57 |
| 10 | Dec-04 | Vietnam | 36 | M | Sibling | 56,57 |
| 11 | Jan-05 | Vietnam | 35 | F | Index | 56,57 |
| 11 | Jan-05 | Vietnam | 13 | F | Daughter | 56,57 |
| 12 | Jan-05 | Cambodia | 14 | M | Index | 56,57 |
| 12 | Jan-05 | Cambodia | 25 | F | Sibling | 56,57 |
| 13 | Feb-05 | Vietnam | 21 | M | Index | 56,57 |
| 13 | Feb-05 | Vietnam | 14 | F | Sibling | 56,57 |
| 14 | Mar-05 | Vietnam | 13 | F | Index | 56,57 |
| 14 | Mar-05 | Vietnam | 5 | M | Sibling | 56,57 |
| 14 | Mar-05 | Vietnam | Adult | F | Aunt | 56,57 |
| 15 | Mar-05 | Vietnam | 35 | M | Father | 56,57 |
| 15 | Mar-05 | Vietnam | 31 | F | Mother | 56,57 |
| 16 | Mar-05 | Vietnam | 0.3 | F | Index | 56,57 |
| 16 | Mar-05 | Vietnam | 3 | F | Sibling | 56,57 |
| 16 | Mar-05 | Vietnam | 10 | F | Sibling | 56,57 |
| 17 | Jun-05 | Indonesia | 8 | F | Index | 56,57 |
| 17 | Jun-05 | Indonesia | 1 | F | Sibling | 56,57 |
| 17 | Jun-05 | Indonesia | 38 | M | Father | 56,57 |
| 18 | Oct-05 | China | 12 | F | Index | 56,57 |
| 18 | Oct-05 | China | 9 | M | Sibling | 56,57 |
| 19 | Oct-05 | Thailand | 48 | M | Index | 56,57 |
| 19 | Oct-05 | Thailand | 7 | M | Son | 56,57 |

| | | | | | | |
|----|--------|------------|----|---|-----------|-------|
| 20 | Aug-05 | Indonesia | 37 | F | Index | 56,57 |
| 20 | Aug-05 | Indonesia | 9 | M | Nephew | 56,57 |
| 21 | Sep-05 | Indonesia | 21 | M | Index | 56,57 |
| 21 | Sep-05 | Indonesia | 5 | M | Sibling | 56,57 |
| 21 | Sep-05 | Indonesia | 4 | M | Nephew | 56,57 |
| 22 | Oct-05 | Indonesia | 19 | F | Index | 56,57 |
| 22 | Oct-05 | Indonesia | 8 | M | Sibling | 56,57 |
| 23 | Nov-05 | Indonesia | 7 | M | Index | 56,57 |
| 23 | Nov-05 | Indonesia | 20 | M | Sibling | 56,57 |
| 23 | Nov-05 | Indonesia | 16 | M | Sibling | 56,57 |
| 24 | Dec-05 | Turkey | 14 | M | Index | 56,57 |
| 24 | Dec-05 | Turkey | 15 | F | Sibling | 56,57 |
| 24 | Dec-05 | Turkey | 12 | F | Sibling | 56,57 |
| 24 | Dec-05 | Turkey | 5 | M | Neighbour | 56,57 |
| 25 | Dec-05 | Turkey | 9 | F | Index | 56,57 |
| 25 | Dec-05 | Turkey | 3 | M | Sibling | 56,57 |
| 26 | Jan-06 | Turkey | 14 | F | Index | 56,57 |
| 26 | Jan-06 | Turkey | 5 | M | Sibling | 56,57 |
| 27 | Jan-06 | Indonesia | 13 | F | Index | 56,57 |
| 27 | Jan-06 | Indonesia | 4 | M | Sibling | 56,57 |
| 27 | Jan-06 | Indonesia | 14 | F | Sibling | 56,57 |
| 27 | Jan-06 | Indonesia | 43 | M | Father | 56,57 |
| 28 | Jan-06 | Iraq | 15 | F | Index | 56,57 |
| 28 | Jan-06 | Iraq | 39 | M | Uncle | 56,57 |
| 30 | Feb-06 | Azerbaijan | 24 | M | Index | 56,57 |

| | | | | | | |
|----|--------|------------|-----|---|---------|-------|
| 30 | Feb-06 | Azerbaijan | 21 | F | Sibling | 56,57 |
| 31 | Feb-06 | Indonesia | 12 | F | Index | 56,57 |
| 31 | Feb-06 | Indonesia | 10 | M | Sibling | 56,57 |
| 32 | Mar-06 | Egypt | 6 | F | Index | 56,57 |
| 32 | Mar-06 | Egypt | 1.5 | F | Sibling | 56,57 |
| 33 | Apr-06 | Indonesia | 37 | F | Index | 56,57 |
| 33 | Apr-06 | Indonesia | 15 | M | Son | 56,57 |
| 33 | Apr-06 | Indonesia | 17 | M | Son | 56,57 |
| 33 | Apr-06 | Indonesia | 28 | F | Sibling | 56,57 |
| 33 | Apr-06 | Indonesia | 1.5 | F | Niece | 56,57 |
| 33 | Apr-06 | Indonesia | 25 | M | Sibling | 56,57 |
| 33 | Apr-06 | Indonesia | 10 | M | Nephew | 56,57 |
| 33 | Apr-06 | Indonesia | 32 | M | Sibling | 56,57 |
| 34 | May-06 | Indonesia | 10 | F | Index | 56,57 |
| 34 | May-06 | Indonesia | 18 | M | Sibling | 56,57 |
| 35 | May-06 | Indonesia | 15 | F | Index | 56,57 |
| 35 | May-06 | Indonesia | 27 | M | Sibling | 56,57 |
| 36 | May-06 | Indonesia | 10 | M | Index | 56,57 |
| 36 | May-06 | Indonesia | 7 | F | Sibling | 56,57 |
| 38 | Sep-06 | Indonesia | 11 | M | Index | 56,57 |
| 38 | Sep-06 | Indonesia | 21 | F | Sibling | 56,57 |
| 39 | Sep-06 | Indonesia | 24 | M | Index | 56,57 |
| 39 | Sep-06 | Indonesia | 20 | M | Sibling | 56,57 |
| 40 | Dec-06 | Egypt | 30 | F | Index | 56,57 |
| 40 | Dec-06 | Egypt | 26 | M | Sibling | 56,57 |

| | | | | | | |
|----|--------|-----------|----|---|----------|-------|
| 40 | Dec-06 | Egypt | 16 | F | Niece | 56,57 |
| 41 | Jan-07 | Indonesia | 37 | F | Index | 56,57 |
| 41 | Jan-07 | Indonesia | 18 | M | Son | 56,57 |
| 42 | Jan-07 | Nigeria | 52 | F | Index | 56,57 |
| 42 | Jan-07 | Nigeria | 22 | F | Daughter | 56,57 |
| 43 | Mar-07 | Egypt | 6 | F | Index | 56,57 |
| 43 | Mar-07 | Egypt | 4 | M | Sibling | 56,57 |
| 44 | Jul-07 | Indonesia | 5 | F | Index | 56,57 |
| 44 | Jul-07 | Indonesia | 29 | F | Mother | 56,57 |
| 45 | Oct-07 | Pakistan | 25 | M | Index | 56,57 |
| 45 | Oct-07 | Pakistan | 22 | M | Sibling | 56,57 |
| 45 | Oct-07 | Pakistan | 25 | M | Sibling | 56,57 |
| 45 | Oct-07 | Pakistan | 32 | M | Sibling | 56,57 |
| 46 | Nov-07 | China | 24 | M | Index | 56,57 |
| 46 | Nov-07 | China | 51 | M | Father | 56,57 |
| 47 | Jan-08 | Indonesia | 38 | F | Index | 56,57 |
| 47 | Jan-08 | Indonesia | 15 | F | Daughter | 56,57 |
| 48 | Dec-08 | Vietnam | 13 | F | Index | 56,57 |
| 48 | Dec-08 | Vietnam | 8 | F | Sibling | 56,57 |
| 49 | Dec-08 | China | 26 | F | Index | 56,57 |
| 49 | Dec-08 | China | 2 | F | Daughter | 56,57 |
| 50 | Feb-11 | Cambodia | 19 | F | Index | 56,57 |
| 50 | Feb-11 | Cambodia | 1 | M | Son | 56,57 |
| 51 | Feb-11 | Indonesia | 31 | F | Index | 56,57 |
| 51 | Feb-11 | Indonesia | 2 | F | Daughter | 56,57 |

| | | | | | | |
|----|--------|-----------|-----|---|----------------|-------|
| 52 | Sep-11 | Indonesia | 5 | F | Index | 56,57 |
| 52 | Sep-11 | Indonesia | 10 | M | Sibling | 56,57 |
| 52 | Sep-11 | Indonesia | 29 | F | Mother | 56,57 |
| 53 | Nov-11 | Egypt | 27 | F | Index | 56,57 |
| 53 | Nov-11 | Egypt | 1.5 | F | Child | 56,57 |
| 54 | Dec-11 | Indonesia | 23 | M | Index | 56,57 |
| 54 | Dec-11 | Indonesia | 5 | F | Family contact | 56,57 |
| 55 | Jan-14 | Cambodia | 8 | M | Index | 56,57 |
| 55 | Jan-14 | Cambodia | 3 | F | Sibling | 56,57 |
| 56 | Mar-15 | Indonesia | 2 | M | Index | 56,57 |
| 56 | Mar-15 | Indonesia | 40 | M | Father | 56,57 |

* F, female; M, male