

Serology characteristics of SARS-CoV-2 infection since the exposure and post symptoms onset

Bin Lou ^{1,2,#}, Ting-Dong Li ^{3,4,#}, Shu-Fa Zheng^{1,2,#}, Ying-Ying Su ^{3,4,#}, Zhi-Yong Li ⁴, Wei Liu ^{3,4}, Fei Yu ^{1,2}, Sheng-Xiang Ge^{3,4,*}, Qian-Da Zou ^{1,2}, Quan Yuan ^{3,4}, Sha Lin ^{1,2}, Cong-Ming Hong ^{3,4}, Xiang-Yang Yao ⁴, Xue-Jie Zhang ^{3,4}, Ding-Hui Wu ⁴, Guo-Liang Zhou ^{3,4}, Wang-Heng Hou ^{3,4}, Ting-Ting Li ^{3,4}, Ya-Li Zhang ^{3,4}, Shi-Yin Zhang ^{3,4}, Jian Fan ^{1,2,5,*}, Jun Zhang ^{3,4,*}, Ning-Shao Xia ^{3,4} and Yu Chen ^{1,2,5,*}.

Affiliations:

1. the Key Laboratory of Clinical In Vitro Diagnostic Techniques of Zhejiang Province, Department of Laboratory Medicine, First Affiliated Hospital, College of Medicine, Zhejiang University, Hangzhou, China
2. Institute of Laboratory Medicine, Zhejiang University, Hangzhou, China
3. the State Key Laboratory of Molecular Vaccinology and Molecular Diagnostics, National Institute of Diagnostics and Vaccine Development in Infectious Diseases, Collaborative Innovation Center of Biologic Products, School of Public Health & School of Life Science, Xiamen University, Xiamen, Fujian, China
4. School of Public Health, Xiamen University, Xiamen, Fujian, China
5. State Key Laboratory for Diagnosis and Treatment of Infectious Diseases, Collaborative Innovation Center for Diagnosis and Treatment of Infectious Diseases, First Affiliated Hospital, College of Medicine, Zhejiang University, Hangzhou, China.

: Bin Lou , Ting-Dong Li , Shu-Fa Zheng , Ying-Ying Su contributed equally to this article

***: Corresponding authors**

Yu Chen (chenyuzy@zju.edu.cn) or Jian Fan (1200011@zju.edu.cn) at State Key Laboratory for Diagnosis and Treatment of Infectious Diseases, Collaborative Innovation Center for Diagnosis and Treatment of Infectious Diseases, First Affiliated Hospital, College of Medicine, Zhejiang University, Hangzhou, China.

Shengxiang Ge (sxge@xmu.edu.cn) or Jun Zhang (zhangji@xmu.edu.cn) at the State Key Laboratory of Molecular Vaccinology and Molecular Diagnostics, National Institute of Diagnostics and Vaccine Development in Infectious Diseases, Collaborative Innovation Center of Biologic Products, School of Public Health & School of Life Science, Xiamen University, Xiamen, Fujian, China.

Take-Home Message Antibody responses are induced after SARS-CoV-2 infection and complement diagnosis value of antibody test to RNA test was observed. Antibody tests are critical tools in clinical management and control of SARS-CoV-2 infection and COVID-19.

Abstract

Background Timely diagnosis of SARS-CoV-2 infection is the prerequisite for treatment and preventive quarantine. The serology characteristics and complement diagnosis value of antibody test to RNA test needs to be demonstrated.

Method A patient cohort study was conducted at the first affiliated hospital of Zhejiang University, China. Serial plasma of COVID-19 patients and were collected and total antibody (Ab), IgM and IgG antibody against SARS-CoV-2 were detected. The antibody dynamics during the infection were described.

Results The seroconversion rate for Ab, IgM and IgG in COVID-19 patients was 98.8% (79/80), 93.8% (75/80) and 93.8% (75/80), respectively. The first detectible serology marker is total antibody and followed by IgM and IgG, with a median seroconversion time of 15, 18 and 20 day post exposure (d.p.e) or 9, 10 and 12 days post onset, separately. The antibody levels increased rapidly since 6 d.p.o and accompanied with the decline of viral load. For patients in the early stage of illness (0-7d.p.o), Ab showed the highest sensitivity (64.1%) compared to the IgM and IgG (33.3% for both, $p < 0.001$). The sensitivities of Ab, IgM and IgG detection increased to 100%, 96.7% and 93.3% two weeks later, respectively.

Conclusions Typical acute antibody response is induced during the SARS-CoV-2 infection. The serology testing provides important complementation to RNA test for pathogenic specific diagnosis and helpful information to evaluate the adapted immunity status of patient. It should be strongly recommended to apply well-validated antibody tests in the clinical management and public health practice to improve the

control of COVID-19 infection.

Key words: SARS-CoV-2, COVID-19, Antibody, Sensitivity, Specificity, Antibody dynamics

Introduction

In the early December 2019, a novel coronavirus (SARS-CoV-2) was first reported to cause lethality pneumonia in human and person-to-person transmission had been demonstrated soon in Wuhan, the capital city of Hubei province, China.[1] The virus rapidly spread through China and then many other countries globally. Up to March 17, 2020, the virus had resulted in over 190,000 laboratory-confirmed cases of coronavirus disease 2019 (Covid-19) and more than 7800 deaths in 163 countries.[2] The World Health Organization (WHO) has declared Covid-19 a public health emergency of international concern and given a “very high” risk assessment on global level.[3] A recent report from China showed that the median incubation period of Covid-19 infection was 4 days (interquartile range, 2 to 7). [4] Fever, cough and fatigue are the most common symptoms.[1] Severe cases could rapidly progress to acute respiratory distress syndrome (ARDS) and septic shock. The abnormalities on chest computed tomography, particularly the ground-glass opacity and bilateral patchy shadowing, were found in over 80% of patients.[5] Over 80% of patients had lymphopenia, and about 60% of patients had elevated C-reactive protein.[6] However, the clinical and laboratory findings of Covid-19 infection are not distinguishable from pneumonia caused by infection of some common respiratory tract pathogens such as influenza virus, streptococcus pneumoniae and mycoplasma pneumoniae.[7] Hence, the timely diagnosis of SARS-CoV-2 infection is important for providing appropriated medical supports and for preventing spread by quarantining.

Currently, the diagnosis of SARS-CoV-2 infection almost solely depends on the

detection of viral RNA using polymerase chain reaction (PCR) based technics.[8]

Unfortunately, the sensitivity of RNA test in the real-world is not satisfied, particularly when sample collected from upper respiratory tract is used.[9-12] In Wuhan, the overall positive rate of RNA testing is estimated to be around 30-50% in Covid-19 patients when they come to hospital.[13] Furthermore, the overall throughput of available RNA tests are highly limited by their nature of requiring high workload, needing skillful operators for testing and sample collection, and needing costly instrument and special operate places.[14] As a result, a convenient serological detection is expected to be helpful. However, current knowledge of the antibody response to SAR-CoV-2 infection is very limited. The diagnosis value of antibody test remains to be clearly demonstrated. How many patients would raise antibody response and how long will the antibody convert to be positive since the exposure? Are there any meaningful differences between patients with short and long incubation period? What are the sensitivities of antibody detection for patients in different illness stages? Is there any temporal association between the antibody response and the decline of viral load? In order to answer some of the questions, we investigated the characteristics of antibody responses in 80 Covid-19 patients during their hospitalization periods, through detecting total antibody, IgM and IgG using immunoassays.

Methods

Study design and participants

A confirmed COVID-19 case was defined based on the New Coronavirus Pneumonia Prevention and Control Program (6th edition) published by the National Health Commission of China. [15] Briefly, a confirmed case should meet three criteria: 1) fever and/or respiratory symptoms; 2) abnormal lung imaging findings; and 3) positive result of the nucleic acid of SARS-CoV-2. The degree of severity of patient was categorized as critical case if any of the bellowed clinical scenes appeared: 1) with ARDS or oxygen saturation < 93% and needing mechanical ventilation either invasively or non-invasively; 2) shock; and 3) complication of organ functional failure and need intensive care unit support. A Covid-19 patient did not meet the above criteria was defined as non-critical case.

This study enrolls a total of 80 cases of COVID-19, where all patients were admitted to the hospital between Jan 19 and Feb 9, 2020, and were willing to donate their blood samples. All enrolled cases were confirmed to be infected by SARS-CoV-2 through real-time RT-PCR (rRT-PCR) testing. The date of illness onset, clinical classification, RNA testing results during the hospitalization period, and the personal demographic information were obtained from the clinical records. A total of 300 healthy people were enrolled from the local community. This study was reviewed and approved by the Medical Ethical Committee of the first affiliated hospital of Zhejiang University (approval number 2020-IIT-47). Written informed consent was obtained from each enrolled subject.

Antibody measurement

The total antibody (Ab), IgM antibody and IgG antibody against SARS-CoV-2 in

plasma samples were tested using three enzyme linked immunosorbent assays (ELISA-Ab, ELISA-IgM and ELISA-IgG), three colloidal-gold lateral-flow immunoassays (LFIA-Ab, LFIA-IgM and LFIA-IgG) and two chemiluminescence microparticle immunoassays (CMIA-Ab and CMIA-IgM), respectively. The ELISA reagents and LFIA reagents were supplied by Beijing Wantai Biological Pharmacy Enterprise Co., Ltd., China (Beijing, China), and the CMIA reagents were supplied by Xiamen InnoDx Biotech Co., Ltd., China (Xiamen, China). The total antibody detection was based on double-antigens sandwich immunoassay and the IgM antibody detection were based on μ -chain capture immunoassay. Mammalian cell expressed recombinant antigens contained the receptor binding domain (RBD) of the SARS-CoV-2 spike protein were used to develop total antibody and IgM antibody assays. Meanwhile, the IgG antibody kits were indirect immunoassays and a recombinant nucleoprotein of SARS-CoV-2 expressed in *Escherichia coli* was used as coating antigen. All the tests were performed according to the manufacturer's instructions. Briefly, 100 μ L, 50 μ L and 20 μ L of plasma samples were used for ELISA-Ab, CMIA-Ab and CMIA-IgM respectively, and 10 μ L of sample was added to 100 μ L of sample diluent buffers for ELISA-IgM. For ELISA-IgG, the sample was 20-fold diluted with 20 mM phosphate buffer (pH 7.0) and 10 μ L of dilution buffer was added to 100 μ L sample. The measurement processes of ELISA and CMIA were conducted with automatic ELISA analyzer HB-300E (Jiaying CRED Medical Equipment Co. Ltd., China) and automatic CMIA analyzer Caris 200 (Xiamen UMIC Medical Instrument Co. Ltd., China), respectively. When LFIA-Ab and LFIA-IgM were

performed, 10 μ L of sample was pipetted onto the sample receiving zone followed by adding two drops of sample buffer. For LFIA-IgG, sample was 1000-fold diluted with sample buffer, then 80 μ L of dilution was added onto the sample receiving area. Fifteen minutes later after sample was added, the result of LFIA was observed by eyes and recorded.

Statistical analysis

Incubation period was defined as interval between earliest date of SARS-Cov-2 exposure and earliest date of symptom onset. Non-normal distribution continue data was described as median with interquartile range (IQR) and compared by Wilcoxon test. Categorical data was summarized as counts and percentages. The 95% confidence intervals of sensitivity and specificity were estimated by binomial exact test. Categorical data was compared using χ^2 test or Fisher's exact test for unpaired proportion, McNemar's test for paired proportions. Cumulative seroconversion rates were calculated by Kaplan-Meier method. All statistical analysis was conducted by SAS 9.4 (SAS Institute, Cary, NC, USA).

Patient and public involvement

No patients were involved in setting the research question or the outcome measures, nor were they involved in the design and implementation of the study.

Dissemination declaration

Dissemination to these groups is not possible/applicable.

Results

Characteristics of enrolled COVID-19 patients

Among totally 81 cases of COVID-19 patients admitted in the hospital (before Feb 9, 2020), 80 (99%) patients were enrolled in the study (Table 1). The median age of patients was 55 years (IQR, 45-64 years) and 38.7% were females. The critical patients were significantly older than non-critical patients ($p < 0.001$). The time of SARS-CoV-2 exposure before onset in 45 patients (15 were critical cases) had been determined according to the unambiguous close contact with a confirmed Covid-19 patients through the epidemiological inspection when admission to hospital. The incubation period was ranged from 0 to 23 days with a median of 5 days (IQR, 2 – 10 days). By February 15, a total of 32 patients (40%, all were non-critical cases) were recovered and discharged from hospital and none died.

The performance of 2019-nCoV antibody detection kits

A total of 80 Covid-19 patients and 100 to 300 healthy people were tested for antibodies against SARS-CoV-2 using different immunoassays. The seroconversion rate for Ab, IgM and IgG in patients was 98.8% (79/80), 93.8% (75/80) and 93.8% (75/80), respectively (Table 2). The last blood sample of the only patient who had not seroconverted was collected on the 7 days post onset (d.p.o). For Ab, IgM and IgG test, the performance of ELISAs seems the best, although the differences are generally not significant. Therefore, the following serological analyses were all based on the results of ELISAs unless specifically noted.

The seroconversion was sequential appeared for Ab, IgM and then IgG, with a median

onset time of 9, 10 and 12 days, separately (Figure 1A). The seroconversion of Ab was significantly quicker than that of IgM and IgG ($p < 0.001$). The cumulative seroconversion curve showed that the rate for Ab, IgM reached 100% and IgG reached 97.1% on day 16, 21 and 29 post symptoms onset, correspondingly. The antibody levels increased rapidly since 6 day post onset (d.p.o) (Figure 1B). The decline of viral load co-occurred with the rising of antibody levels. For patients in the early (0-7d.p.o) stage of illness, the ELISA-Ab showed the highest sensitivity (64.1%) compared to the ELISA-IgM and ELISA-IgG (33.3% for both, $p < 0.001$, Table 3). The sensitivities of antibody, IgM and IgG detection increased significantly when the patient entered the later stage and reached 100%, 96.7% and 93.3% two weeks later ($p < 0.05$).

The antibody dynamics after exposure to 2019-nCoV

The antibody dynamics following initial infection were described among 45 patients whose exposure time were determined (Figure 2). The seroconversion was sequential appeared for Ab, IgM and then IgG and the levels increased rapidly, with a median day post exposure (d.p.e) of 15, 18 and 20, separately (Figure 3). The decline of viral load co-occurred with the rising of antibody levels. The cumulative positive rate for Ab, IgM and IgG separately reached 100%, 94.2% and 96.7% at 37 d.p.e. The patients who reported symptoms within 5 days (0-5d) since the

exposure were assigned into the short incubation period group and the remaining patients were assigned into the long incubation period group (Table 4). There was no significant difference on age, viral load in the early stage of illness and the risk of critical status between the groups. However, the median seroconversion time was shorter for the short incubation period group than for the long incubation period group (13d.p.e v.s. 21d.p.e, $p < 0.001$). In contrast, the median seroconversion day post onset was longer for the short incubation period group than the long incubation period group (10d.p.o v.s. 7d.p.o, $p < 0.05$).

Discussion

The present study showed that near all (98.8%, 79/80) Covid-19 patients converted to be seropositive during the illness course. Seroconversion was first observed on 7d.p.e (2d.p.o). The first detectible antibody is total antibody and followed by IgM and IgG, with a median seroconversion time of 15d.p.e (9d.p.o), 18d.p.e (10d.p.o) and 20d.p.e (12d.p.o). It is very similar as that observed in SARS-CoV-1 infection.[16, 17] Interestingly, the rising of antibody levels accompanied with the decline of viral load. Currently, the quarantine period is set as 14 days since close contacting with a confirmed SARS-CoV-2 infection case. The proportion of infection could not be screened out through RNA test during the quarantine period remains unknown. However, it had been documented that some close contactors presented symptoms and causing transmission after de-isolation[18]. It is believed that antibody test might improve the sensitivity to find infections, but the evidence had not been shown before.

Our data showed that the cumulative seroconversion rate is 45.5% on 14d.p.e. It indicated that about half of the carriers could be screened out if antibody were tested before de-isolation. The cumulative seroconversion rate reached 75% on 20d.p.e (11d.p.o). Seven patients (15.6%) had not present any symptoms before 14 d.p.e, among them 4 patients remained seronegative on 22 d.p.e (1 patient) and 25 d.p.e (3 patients). Hence, follow-up antibody testing and monitoring respiratory symptoms for two weeks after de-isolation would be helpful to further reduce the risk of spread.

The median incubation period was 5 days (IQR, 2 to 10), very similar as previously reported. [4] The needing time for seroconverting since exposure is significantly longer for patients with long incubation period than for patients with short incubation period (21d v.s. 13d, $p < 0.001$). In contrast, the antibody of patients with longer incubation period appeared on the earlier days post onset (7d.p.o v.s. 10d.p.o, $p < 0.05$). The difference seems not be biased by the competence of host immunity because of the similar age distribution between groups. Hence, it is more likely due to the lower intake dose of virus or less efficiency of virus reproduction in the host. Nevertheless, the longer incubation period does not change the initial viral load when the symptoms onset and also the risk of experiencing critical status. Therefore, in addition to the onset time, the interpretation of the negative findings of antibodies in suspected infections should consider the exposure time as well. The faster seroconversion post onset suggests the longer incubation period.

Recently, Guan et al [4] reported that the median time from onset of symptoms to need mechanical ventilator support is 9.3 days. Therefore, timely diagnosis and admit

to hospital within 7d.p.o might be crucial to lower the fatality of Covid-19 infection.

Zhao et al [19] reported that the overall RNA positive rate was lower than 70% in patients on the first week post symptoms onset and fall to 50% on the next week.

Many reports indicated that lots of patients were finally diagnosed by RNA testing through day and day's repeat sampling and testing, and many cases that were strongly epidemiologically linked to SARS-CoV-2 exposure and with typical lung radiological findings remained RNA negative. [9] In our study, the RNA positive rate is 100% when admitted in hospital, but it cannot be excluded that some patients missed diagnosis due to their undetectable viral RNA. Another reason for the relatively high RNA positive rate in our study is that we used the deep sputum sample for RNA test, in contrast to the more convenient and popular throat/nasal swabs in many other hospitals. It suggests that the lower respiratory samples such as deep sputum and bronchoalveolar lavage might be more reliable for SARS-CoV-2 RNA detection.

Similar as the RNA test, the negative antibody finding in the early stage of illness could not exclude the possibility of infection. Our study showed that the seroconversion rate on 7d.p.o reached 64.1% and then increased to over 90% in the next week. The relative long window period of seroconversion indicates that, for searching previously exposed patients or subclinical carriers, the specific serology should not replace RNA detection but could be an important complement. Furthermore, the fact that near all patients will convert to antibody positive and the titer increased rapidly underlines the usage of antibody test in confirming or excluding diagnosis of SARS-CoV-2 infection if the convalescent sample were tested.

The present data showed that the sensitivity of total antibody detection was higher than that of IgM and IgG ($p < 0.001$) while the specificities are overall comparable when the same testing technic (ELISA, CLMA or LFIA) is used. The detection of total antibody is based on double-antigen sandwich methodology. It can detect any types of antibodies including IgM, IgG and IgA in principle. Besides, it needs the two Fab arms of the same antibody molecular binding to the coated antigen and the enzyme conjugated antigen, which guarantees the specificity of the test and then allows high concentration of antigens be used for coating and second binding to increase the sensitivity of the assay. Therefore, it is not unexpected that the sensitivity of total antibody detection superiors to that of IgM and IgG detection in our study. Usually, IgM is considered as a marker of current or recent infection, while IgG be a marker of post or recent infection. The implications of total antibody are not so straight and then less being used in clinical practice. However, total antibody test outweighs IgM and IgG if the sensitivity is of the top priority, and has been frequently used in blood transfusion products screening such as human immunodeficiency virus and hepatitis C virus. As for current urgently needs of sensitive diagnosis for SARS-CoV-2 infection to contain the spread, Ab test might be a better choice than IgM or IgG, particularly considered the fact that the virus had invaded human society for less than 4 months then the prevalence of antibody induced by post infection is nearly zero.

In our study, antibody tests based on ELISA, CMIA and LFIA were validated and showed good performance overall. CMIA takes the advantages of automatic-operation, rapid and high-throughput, objective and quantitative, but

requires costly specific instrument. ELISA is low-cost, objective and high-throughput, widely used in most of medical laboratories worldwide. LFIA is a rapid point-of-care test, not require special instrument, very convenience and easy to operate but the reading of result is subjective. The establishment of different immunoassays provides flexible choices for the users.

The limitations of the study included: 1) only symptomatic infections were enrolled, therefore if the antibody response to asymptomatic infection follows similar features remains to be determined; 2) most blood samples were all collected with one month post onset so the lasting time of antibodies cannot be estimated; 3) the antibody levels had not been exactly titrated. Future studies are needed to better understand the antibody response profile of SARS-CoV-2 infection and to precisely interpret the clinical meaning of serology findings.

In conclusion, typical acute antibody response is induced during the SARS-CoV-2 infection. The serology testing provides important complementation to RNA test for pathogenic specific diagnosis and helpful information to evaluate the adapted immunity status of patient. It should be strongly recommended to apply well-validated antibody tests in the clinical management and public health practice to improve the control of Covid-19 infection.

Acknowledgements : We acknowledge the work and contribution of all the health providers from the First Affiliated Hospital of Zhejiang University. We sincerely thanked Shan Qiao, Xue-Rong Jia, Bao-Liang Jia, Wen-Jie Sun Ji-Pei Zhang, Shuang

Qiu from Beijing Wantai Biological Pharmacy Enterprise Co. Ltd., Liu-Wei Song, Shun-Hua Wen, Rong-Hua Sun, Ji-Pei Shen from Xiamen Innodx Biotech Co. Ltd., Fei-Hai Xu from Xiamen UMIC Medical Instrument Co. Ltd. for their helpful technical assistance.

Support statement : This study was funded by China National Mega-Projects for Infectious Diseases (2017ZX10103008), and the Science and Technology Major Project of Xiamen (3502ZZ2020YJ01). The funders had no role in study design, data collection, data analysis, data interpretation, or writing of the report. No support from any organisation for the submitted work.

Conflict of interest : All authors have completed the ICMJE uniform disclosure form at www.icmje.org/coi_disclosure.pdf and have nothing to disclose.

Reference

1. Huang C, Wang Y, Li X, Ren L, Zhao J, Hu Y, Zhang L, Fan G, Xu J, Gu X, Cheng Z, Yu T, Xia J, Wei Y, Wu W, Xie X, Yin W, Li H, Liu M, Xiao Y, Gao H, Guo L, Xie J, Wang G, Jiang R, Gao Z, Jin Q, Wang J, Cao B. Clinical features of patients infected with 2019 novel coronavirus in Wuhan, China. *Lancet* 2020: 395(10223): 497-506.
2. World Health Organization. Coronavirus disease (COVID-19) outbreak. <https://www.who.int/emergencies/diseases/novel-coronavirus-2019> (Access date: March 18, 2020)
3. Brooks RG, Brown L, Franklin RB. Comparison of a new rapid test (TestPack Rotavirus) with standard enzyme immunoassay and electron microscopy for the detection of rotavirus in symptomatic hospitalized children. *Journal of clinical microbiology* 1989: 27(4): 775-777.
4. Guan WJ, Ni ZY, Hu Y, Liang WH, Ou CQ, He JX, Liu L, Shan H, Lei CL, Hui DSC, Du B, Li LJ, Zeng G, Yuen KY, Chen RC, Tang CL, Wang T, Chen PY, Xiang J, Li SY, Wang JL, Liang ZJ, Peng YX, Wei L, Liu Y, Hu YH, Peng P, Wang JM, Liu JY, Chen Z, Li G, Zheng ZJ, Qiu SQ, Luo J, Ye CJ, Zhu SY, Zhong NS, China Medical Treatment Expert Group for C. Clinical Characteristics of Coronavirus Disease 2019 in China. *N Engl J Med* 2020.
5. Guan W-j, Ni Z-y, Hu Y, Liang W-h, Ou C-q, He J-x, Liu L, Shan H, Lei C-l, Hui

DSC, Du B, Li L-j, Zeng G, Yuen K-Y, Chen R-c, Tang C-l, Wang T, Chen P-y, Xiang J, Li S-y, Wang J-l, Liang Z-j, Peng Y-x, Wei L, Liu Y, Hu Y-h, Peng P, Wang J-m, Liu J-y, Chen Z, Li G, Zheng Z-j, Qiu S-q, Luo J, Ye C-j, Zhu S-y, Zhong N-s. Clinical Characteristics of Coronavirus Disease 2019 in China. *New England Journal of Medicine* 2020.

6. Cao W. Clinical features and laboratory inspection of novel coronavirus pneumonia (COVID-19) in Xiangyang, Hubei. *medRxiv* 2020: <https://doi.org/10.1101/2020.02.23.20026963>. (Access date:2020.02.25)

7. Ai J-W, Zhang H-C, Xu T, Wu J, Zhu M, Yu Y-Q, Zhang H-Y, Shen Z, Li Y, Zhou X, Zang G-Q, Xu J, Chen W-J, Li Y-J, Xie D-S, Zhou M-Z, Sun J-Y, Chen J-Z, Zhang W-H. Optimizing diagnostic strategy for novel coronavirus pneumonia, a multi-center study in Eastern China. *medRxiv* 2020: <https://doi.org/10.1101/2020.02.13.20022673>. (Access date:2020.02.17)

8. Laboratory testing of human suspected cases of novel coronavirus (nCoV) infection. Interim guidance v1 ed. World Health Organization, Geneva, 2020.

9. Ai J-W, Zhang H-C, Xu T, Wu J, Zhu M, Yu Y-Q, Zhang H-Y, Li Y, Zhou X, Shen Z, Zang G-Q, Xu J, Chen W-J, Li Y-J, Xie D-S, Zhou M-Z, Sun J-Y, Chen J-Z, Zhang W-H. Optimizing diagnostic strategy for novel coronavirus pneumonia, a multi-center study in Eastern China. *medRxiv* 2020: <https://doi.org/10.1101/2020.02.13.20022673>. (Access date:2020.02.17)

10. Yang Y, Yang M, Shen C, Wang F, Yuan J, Li J, Zhang M, Wang Z, Xing L, Wei J, Peng L, Wong G, Zheng H, Liao M, Feng K, Li J, Yang Q, Zhao J, Zhang Z, Liu L, Liu Y. Evaluating the accuracy of different respiratory specimens in the laboratory diagnosis and monitoring the viral shedding of 2019-nCoV infections. *medRxiv* 2020: <https://doi.org/10.1101/2020.02.11.20021493> (Access date:2020.02.17)

11. Lin C, Xiang J, Yan M, Li H, Huang S, Shen C. Comparison of throat swabs and sputum specimens for viral nucleic acid detection in 52 cases of novel coronavirus (SARS-Cov-2) infected pneumonia (COVID-19). *medRxiv* 2020: <https://doi.org/10.1101/2020.02.21.20026187>. (Access date:2020.02.23)

12. Zhang W, Du RH, Li B, Zheng XS, Yang XL, Hu B, Wang YY, Xiao GF, Yan B, Shi ZL, Zhou P. Molecular and serological investigation of 2019-nCoV infected patients: implication of multiple shedding routes. *Emerg Microbes Infect* 2020: 9(1): 386-389.

13. [Available from: https://www.sohu.com/a/371096225_661528. (Access date: March 6, 2020).

14. Minzhe Shen YZ, Jiawei Ye, Abdu Ahmed Abdullah AL-maskri, Yu Kang, Su Zeng, Sheng Cai. Recent advances and perspectives of nucleic acid detection for coronavirus. *Journal of Pharmaceutical Analysis* 2020: <https://doi.org/10.1016/j.jpha.2020.02.010>. (Access date:2020.03.01)

15. National Health Commission of China New coronavirus pneumonia prevention and control program (6th edn). <http://www.nhc.gov.cn/yzygj/s7653p/202002/8334a8326dd>

[94d329df351d7da8aefc2/files/b218cfef1bc54639af227f922bf6b817.pdf](http://www.nhc.gov.cn/yzygj/s7653p/202002/8334a8326dd94d329df351d7da8aefc2/files/b218cfef1bc54639af227f922bf6b817.pdf) (access date: February 4, 2020)

16. Woo PC, Lau SK, Wong BH, Chan KH, Chu CM, Tsoi HW, Huang Y, Peiris JS, Yuen KY. Longitudinal profile of immunoglobulin G (IgG), IgM, and IgA antibodies against the severe acute respiratory syndrome (SARS) coronavirus nucleocapsid protein in patients with pneumonia due to the SARS coronavirus. *Clin Diagn Lab Immunol* 2004; 11(4): 665-668.
17. Mo H, Zeng G, Ren X, Li H, Ke C, Tan Y, Cai C, Lai K, Chen R, Chan-Yeung M, Zhong N. Longitudinal profile of antibodies against SARS-coronavirus in SARS patients and their clinical significance. *Respirology* 2006; 11(1): 49-53.
18. Hu Z, Song C, Xu C, Jin G, Chen Y, Xu X, Ma H, Chen W, Lin Y, Zheng Y, Wang J, Hu Z, Yi Y, Shen H. Clinical characteristics of 24 asymptomatic infections with covid-19 screened among close contacts in Nanjing, China. *medRxiv* 2020: <https://doi.org/10.1101/2020.02.20.20025619>. (Access date:2020.02.25)
19. Zhao J, Yuan Q, Wang H, Liu W, Liao X, Su Y, Wang X, Yuan J, Li T, Li J, Qian S, Hong C, Wang F, Liu Y, Wang Z, He Q, Li Z, He B, Zhang T, Ge S, Liu L, Zhang J, Xia N, Zhang Z. Antibody responses to SARS-CoV-2 in patients of novel coronavirus disease 2019. *medRxiv* 2020: <https://doi.org/10.1101/2020.03.02.20030189>. (Access date:2020.03.03)

Table 1. Demographics and clinical characteristics of enrolled COVID-19 patients

	Total	Non-critical	Critical	P value
Number	80	54	26	-
Sex, n(%)				
Female	31(38.7)	24(44.4)	7(26.9)	0.132
Male	49(61.3)	30(55.6)	19(73.1)	
Age, median(IQR)	55(45, 64)	51(38,39)	65(52,74)	<0.001
Clinical outcome, n(%)				
Recovery	26(32.5)	26(48.1)	0(0.0)	<0.001
Still in hospital	54(67.5)	28(51.9)	26(100.0)	
Incubation period, median(IQR) *	5(2, 10)	4(2,12)	7(1,10)	1.000
Illness day of the first positive	4(1,6)	4(2,6)	3(1,6)	0.179
SARA-CoV-2 RNA finding, median(IQR)				
Illness days when the first antibody testing sample were collected, median(IQR)	8(6, 10)	7(5, 10)	8(7,10)	0.215
No. of tested samples for antibodies for each case, median(IQR)	4(3,5)	4(3,4)	4(3,5)	0.888
Total number of plasma samples	305	205	100	-

* The time of SARS-CoV-2 exposure before onset in 45 patients had been determined through epidemiological inspection; among them 15 were critical cases. IQR = interquartile range.

Table 2. Sensitivity and specificity of different immunoassays to detect antibodies against SARS-CoV-2

Type of immunoassay*	Sensitivity			Specificity		
	No. patient	n(+)	% (95%CI)	No. uninfected person	n(-)	% (95%CI)
Total antibody						
ELISA-Ab	80	78	97.5 (91.3, 99.7)	300	300	100.0 (98.8, 100.0)
CMIA-Ab	80	77	96.3 (89.4, 99.2)	300	298	99.3 (97.6, 99.9)
LFIA-Ab	80	78	97.5 (91.3, 99.7)	209	199	95.2 (91.4, 97.7)
Combined	80	79	98.8 (93.2, 100.0)	209	197	94.3 (90.2, 97.0)
IgM						
ELISA-IgM	80	74	92.5 (84.4, 97.2)	300	300	100 (98.8, 100)
CMIA-IgM	80	69	86.3 (76.7, 92.9)	300	298	99.3 (97.6, 99.9)
LFIA-IgM	80	71	88.8 (79.7, 94.7)	209	205	98.1 (95.2, 99.5)
Combined	80	75	93.8 (86.0, 97.9)	209	203	97.1 (93.9, 98.9)
IgG						
ELISA-IgG	80	71	88.8 (79.7, 94.7)	100	100	100.0 (96.4, 100.0)
LFIA-IgG	80	69	86.3 (76.7, 92.9)	209	208	99.5 (97.4, 100.0)
Combined	80	75	93.8 (86.0, 97.9)	100	99	99.0 (94.6, 100)

* ELISA, enzyme linked immunosorbent assay; CMIA, chemiluminescence immunoassay;

LFIA, lateral flow immunoassay. The combined sensitivities were calculated based on positive findings by any of the assays, and the combined specificities were calculated based on negative findings for all assays.

Table 3. Performance of different detections in different periods post onset

Days after onset	No.	RNA*		ELISA-Ab		ELISA-IgM		ELISA-IgG	
	Patients	n(+)	Sensitivity (%)	n(+)	Sensitivity (%)	n(+)	Sensitivity (%)	n(+)	Sensitivity(%)
0-7	39	36 [§]	100.0	25	64.1	13	33.3	13	33.3
8-14	75	64 [§]	90.1	74	98.7	65	86.7	57	76.0
15-29	60	41 [§]	70.7	60	100.0	58	96.7	56	93.3

* RNA was tested using deep sputum sample.

§ There were 36, 71 and 58 patients had RNA testing during the periods between 0-7, 8-14 and 15-29 days post onset, respectively.

Table 4. Comparison of patients with short or long incubation period

	Short incubation period group (0-5d)	Long incubation period group (6-23d)	P value
Number of patient	25	20	-
Incubation period, median(IQR)	2(0, 4)	13(9, 17)	<0.001
Age	51(36, 63)	54(46,65)	0.784
Proportion of critical case (n, %)	7(28.0)	8(40.0)	0.396
Viral load in the early stage of illness, median (IQR)*	27.8(22.6,34.9)	27.0(24.1, 30.1)	0.599
Day post exposure when the antibody converted, median (IQR)	13(9, 15)	21(17, 25)	<0.001
Day post onset when the antibody converted, median (IQR)	10(9, 12)	7(6, 10)	0.013

*The viral load was measured using the CT value of real time RT-PCR when detect the first available sputum samples collected after the onset.

Figure 1. Cumulative seroconversion rates and the dynamics of antibody levels

since the onset of illness in 80 Covid-19 patients. (A) The curves of the cumulative seroconversion rates for total antibody, IgM and IgG detected by ELISAs were plotted according to Kaplan–Meier methods. (B) The antibody levels were surrogated expressed using the relative binding signals compared to the cutoff value of each assay (S/CO). Four parameter logistic fitting curves were used to mimic the trends of antibody levels.

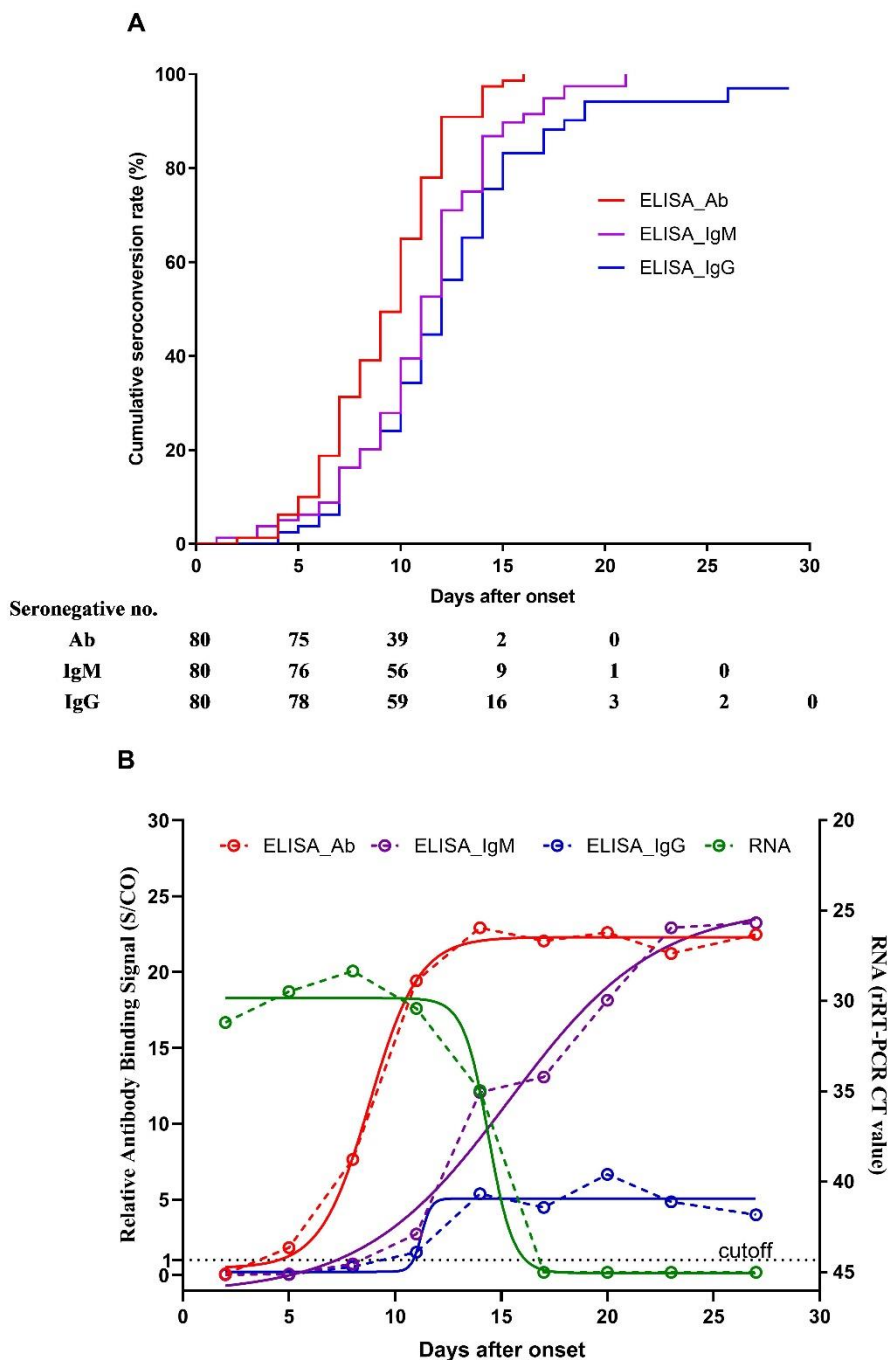


Figure 2. The total antibody dynamics of 45 patients with determined exposure time.

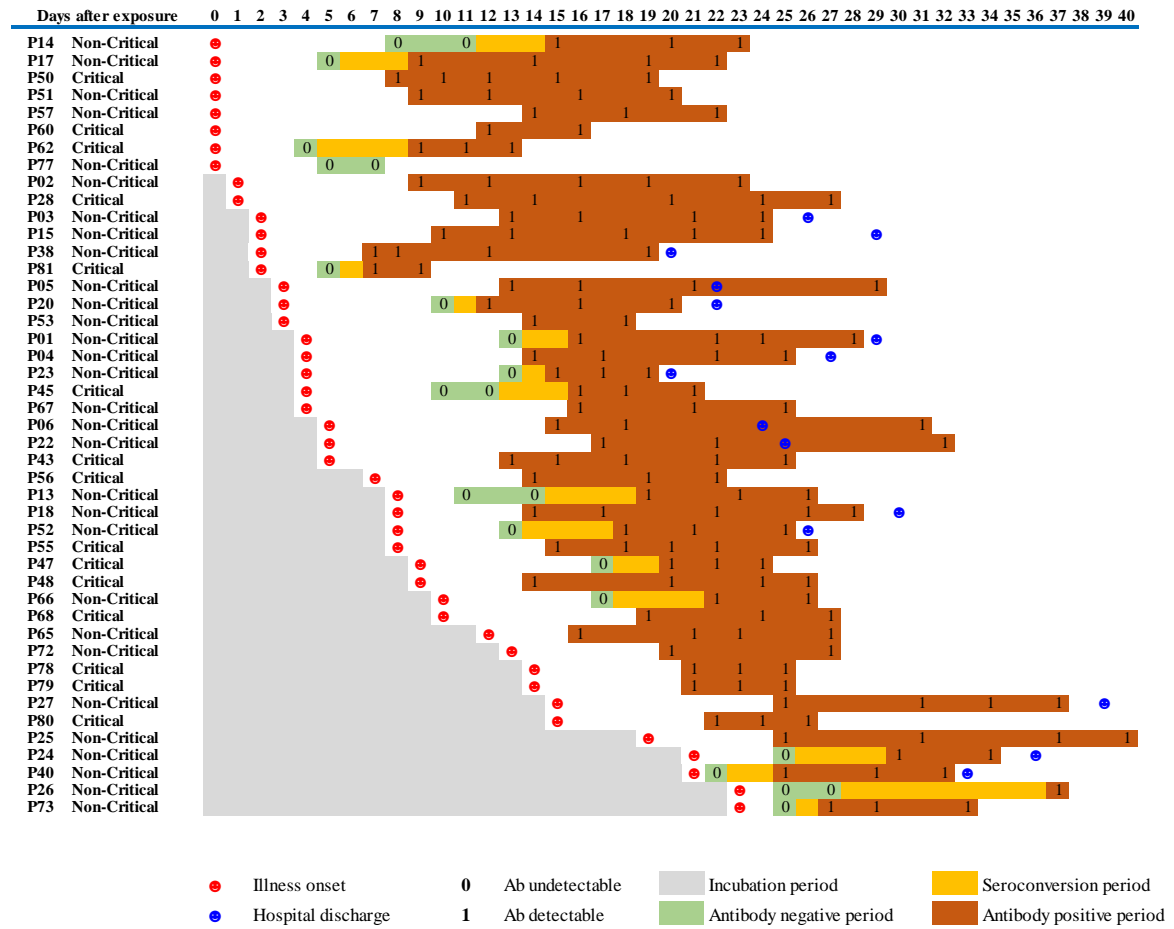


Figure 3. Cumulative seroconversion rates and the dynamics of antibody levels

since the exposure of SARS-CoV-2 in 45 Covid-19 patients. (A) The curves of the cumulative seroconversion rates for total antibody, IgM and IgG detected by ELISAs were plotted according to Kaplan–Meier methods. (B) The antibody levels were surrogated expressed using the relative binding signals compared to the cutoff value of each assay (S/CO). Four parameter logistic fitting curves were used to mimic the trends of antibody levels.

