

1 **Emerging high-level ciprofloxacin-resistant *Salmonella enterica* serovar Typhi haplotype**
2 **H58 in travelers returning from India to the Republic of Korea**

3 Eunkyung Shin^{1,3}, Ae Kyung Park¹, Jungsun Park¹, Soojin Kim¹, Hyun Ju Jeong¹, Kyoungin
4 Na², Hyerim Lee², Jeong-hoon Chun¹, Kyu Jam Hwang¹, Chul-Joong Kim³, Junyoung Kim¹

5 ¹ Division of Bacterial Diseases, Korea Centers for Diseases Control and Prevention, Cheongju,
6 28159, Republic of Korea

7 ² Division of Infectious Diseases Control, Korea Centers for Diseases Control and Prevention,
8 Cheongju, 28159, Republic of Korea

9 ³ College of Veterinary Medicine, Chungnam National University, Daejeon, 34134, Republic of
10 Korea

11

12

13

14

15 **Corresponding author:** Junyoung Kim

16 Division of Bacterial Diseases, Center for Laboratory Control of Infectious Diseases, Korea
17 Centers for Diseases Control and Prevention, Cheongju-si, Chungcheongbuk-do, 28159,
18 Republic of Korea

19 Tel: +82-43-719-8116; Fax: +82-43-719 8109; E-mail: jun49@hanmail.net

20 **Abstract**

21 In Korea, typhoid fever is a rare disease due to improved living standards. However, this disease
22 remains a major burden in developing countries and regions, such as India and Southeast Asia, In
23 this study, we isolated *Salmonella* Typhi (*S. Typhi*) from eight typhoid patients, travelers
24 returning from India. Isolated strains characterized with antimicrobial susceptibility profile and
25 whole genome sequencing (WGS) analysis.

26 All strains were resistant to nalidixic acid and azithromycin. Among them, four isolates were
27 highly resistant to ciprofloxacin (MIC ≥ 32 $\mu\text{g/ml}$) and never confirmed in Korea *PulseNet* DB.
28 On the basis of the WGS, we found that the ciprofloxacin-resistant strain belonged to global
29 dominant multi-drug resistant (MDR) genotype, haplotype H58 (SNP *glpA* C1047T, *SptP* protein
30 Q185* (premature stop codon)) not harbour MDR plasmid. They have H58-associated SNPs in
31 membranes and metabolism genes, including *yhdA*, *yajI*, *hyaE*, *tryE*, *rlpB* and *metH*. Also,
32 Phylogenetic analysis showed that H58 strains were assigned sublineage II, and the non-H58
33 strains were closely related to haplotype H50.

34 High-level ciprofloxacin-resistant *S. Typhi* haplotype H58 in Korea was first confirmed as influx
35 from overseas by travelers. This study provides information about intercontinental drug-resistant
36 transmission between countries and suggests that travelers need to be careful about personal
37 hygiene.

38

39 **Introduction**

40 Typhoid fever, caused by *Salmonella enterica* serovar Typhi (*S. Typhi*), is a systemic disease
41 that causes gastroenteritis, fever, and severe diarrhea. *S. Typhi* is a human-specific pathogen
42 transmitted by the ingestion of contaminated water or food[1]. This disease remains a major
43 burden in developing countries, such as India, Pakistan, and Egypt, and causes 216,000
44 deaths/year worldwide[2].

45 Multidrug-resistant (MDR) *S. Typhi* displaying resistance to chloramphenicol, ampicillin, and
46 trimethoprim has been reported in epidemic countries since the 1960s. Resistance to
47 fluoroquinolones and third-generation cephalosporins was recently demonstrated in the 2000s,
48 and more than 90% of south Asian *S. Typhi* strains have decreased susceptibility to ciprofloxacin
49 (CIP)[3]. SNP-based analysis schemes have been developed by stratifying the *S. Typhi*
50 population by haplotype[4]. According to Wong et al., over the past two decades, a dominant
51 MDR lineage, *S. Typhi* haplotype H58, initially defined by the SNP *glpA*-C1047T, has become
52 prevalent worldwide. In particular, decreased susceptibility of *S. Typhi* to fluoroquinolones,
53 which is frequently reported in Africa and Asia[5,6], is associated with the H58 sublineage.

54 In developed countries, typhoid generally occurs in only individuals who have travelled to
55 endemic countries and immigrants from those regions. In Switzerland, quinolone-resistant
56 typhoid infection was reported in a traveler returning from India[7], and MDR *S. Typhi* isolates
57 related to travel to Pakistan were detected in the United Kingdom[8]. Typhoid fever is
58 uncommon in the Republic of Korea; approximately 156 cases are reported yearly to the Korea
59 National Surveillance System[9]. In 2017, we first isolated H58 *S. Typhi* during an outbreak

60 involving international travelers returning from India. To investigate the transmission route and
61 characterize the isolates, we analysed the H58 strain using whole-genome sequencing.

62 **Materials and Methods**

63 *Clinical isolates*

64 Stool and blood samples of patients were processed according to the standard bacterial culture
65 method; bacterial identification was performed using a VITEK-II automated system
66 (bioMérieux, Marcy l’Etoile, France), and serotyping of *Salmonella* was carried out according to
67 the Kauffmann-White scheme using antisera (BD Biosciences, Frankland Lakes, NJ, USA). The
68 clinical samples were collected anonymously by *EnterNet* Korea, National gastrointestinal
69 infections disease surveillance network.

70 *Antimicrobial resistance profile*

71 Antimicrobial susceptibilities and minimum inhibitory concentrations (MICs) were determined
72 using the broth microdilution method with 16 antibiotics and customized KR CDC1F Sensititre
73 panels (Trek Diagnostic Systems, OH, USA) in accordance with the guidelines established by
74 the Clinical and Laboratory Standards Institute (CLSI). The antimicrobial agents tested were
75 ampicillin, ampicillin–sulbactam, amoxicillin–clavulanic acid, cephalothin, cefoxitin,
76 ceftriaxone, cefotaxime, nalidixic acid, ciprofloxacin, tetracycline, chloramphenicol, imipenem,
77 streptomycin, gentamicin, amikacin, and trimethoprim–sulfamethoxazole.

78 *Whole-genome sequencing*

79 Genomic DNA was isolated with DNA Blood and Tissue Kit (Qiagen, Hombrechtikon,
80 Switzerland). Whole-genome sequencing was performed on a MiSeq platform (Illumina Inc.,
81 San Diego, CA) with a v.2 (500 cycles with 2 X 250-nt reads) kit. The existence and mutations
82 of antibiotic resistance genes and plasmids were determined using Bacterial Analysis Pipeline

83 version 1.0.4. (Illumina BaseSpace Labs, <https://basespace.illumina.com/>). Other alleles in
84 virulence- and adaptation-related genes were identified using the Geneious Prime 2019.2.1
85 program.

86 *wgSNP and wgMLST analysis*

87 Paired-end reads were performed with the wgSNP module of BioNumerics v7.6 software
88 (Applied Maths) and mapped to the *S. Typhi* reference genome CT18 (AL513382). By choosing
89 the default strict filtering option with minimum coverage at x30 base quality, strain-specific
90 SNPs were determined. Then, whole-genome multilocus sequence typing (wgMLST) was
91 analysed using 15874 loci with the open data set in the wgMLST module. By advanced cluster
92 analysis, a minimum spanning tree was constructed.

93

94 **Results**

95 *Case description*

96 In July and August 2017, eight patients were found to be infected with typhoid fever. Five
97 patients had volunteered and travelled in the Northwest region of India (New Delhi, Amritsar,
98 Dharamshala, and Agra) on July 19-27th (group A). The first case occurred on July 22nd and
99 was accompanied by fever, chills, watery diarrhea, headache, and sweating. The onset of the
100 second case occurred on July 28th. After returning to Korea, three patients showed symptoms
101 such as fever, chills, anorexia and stomach-ache on the 6th (n=2) and 13th (n=1) of August. In
102 August, another group travelled along the same route (group B). Three tourists were reported as
103 having typhoid fever on August 18th (Figure 1).

104 *Antibiotic resistance profiles*

105 All strains were resistant to nalidixic acid (NAL; minimum inhibitory concentration (MIC)
106 ≥ 128 $\mu\text{g/ml}$) and azithromycin (AZI; MIC ≥ 8 $\mu\text{g/ml}$). Only four isolates (1 from group A and 3
107 from group B) were highly resistant to ciprofloxacin (MIC ≥ 32 $\mu\text{g/ml}$) (Table 1). Furthermore,
108 analysis of the antimicrobial gene mutations of the CIP-resistant isolates revealed two mutations
109 in the *gyrA* gene (Ser83 \rightarrow Phe (S83F) and Asp87 \rightarrow Asn) and a *parC* mutation (Ser80 \rightarrow Ile). In
110 addition, the analysis of plasmid-mediated quinolone resistance (PMQR) determinants indicated
111 that the CIP-resistant isolates contained the *aac(6')-Iaa* gene. The non-H58 strain had a mutation
112 in *gyrA* (S83F) and a PMQR gene (*aac(6')-Iaa*) on the plasmid and replicon type (IncFIB
113 (pHCM2)).

114 *Whole-genome sequencing analysis*

115 All eight isolates indicated that the high-level CIP-resistant strains belonged to haplotype H58,
116 while the CIP-susceptible strains did not. The CIP-resistant strains had the typical features of
117 H58: SNPs in *glpA* at nucleotide 252 and position 2,348,902 in *S. Typhi* CT18 (C1047T) and
118 *SptP* protein Q185* (premature stop codon). Maximum likelihood phylogeny was inferred from
119 1577 SNPs (Figure 2A). SNP-based analysis distinguished the *S. Typhi* isolates by haplotype.
120 The H58 strains formed a tight cluster and belonged to sub-lineage II, with comparative strains
121 from India, Viet nam, Sri lanka and Lebanon. The non-H58 strains were closely related to
122 haplotype H50. A minimum spanning tree (Figure 2B) based on wgMLST showed similar
123 results, but it is difficult to distinguish between H58 sub-lineages.

124

125 Discussion

126 In Korea, six travel-associated cases (in addition to this outbreak) and 304 *S. Typhi* isolates
127 have been sporadically identified over the past decade, [10]. The previous travel cases were
128 associated with China (n=2), Japan (n=1), Indonesia (n=2), and Russia (n=1). Therefore, this
129 report describes the first Korean *S. Typhi* H58 outbreak following international travel to India.
130 India is a well-known geographical source of H58 with high CIP resistance[11].

131 Since the 1960s, antimicrobial-resistant *S. Typhi* has been prevalent worldwide. NAL-resistant
132 *S. Typhi* is frequently isolated in India, and high-level CIP-resistant *S. Typhi* was recently
133 isolated from a domestic patient[12]. In 2007, NAL-resistant *S. Typhi* strains were reported for
134 the first time in Korea and did not respond to CIP as treatment[13]. These cases suggest an
135 alternative treatment as third-generation cephalosporins or AZI [6]. But the isolates showed
136 resistance to not only NAL and CIP but also AZI. Moreover, the occurrence with extended
137 spectrum β -lactamases (ESBLs) harbouring CTX-M-15 and/or high resistance to quinolones has
138 been reported in other studies[14]. Therefore, an appropriate prescription based on surveillance
139 will be required for future treatment. Continuous monitoring and data collection will be essential
140 to prevent the occurrence and treatment failure of antimicrobial-resistant *S. Typhi*.

141 As the dominant MDR lineage of *S. Typhi*, haplotype H58 has spread worldwide, particularly
142 in South Asia and Africa (3,4). In this research, we revealed H58 *S. Typhi* infection by
143 international travelers using WGS analysis. These H58 strains harboured a *glpA* gene and *SptP*
144 protein mutation and triple point mutations in QRDR but lacked the MDR plasmid of the IncHI1
145 type. The most of H58 lineage relate with reduced globally susceptibility to fluoroquinolones and
146 harbouring IncHI1 [4]. Our results indicate that fluoroquinolone-resistant H58 with extending

147 other antimicrobial resistance is circulating in epidemic regions. Thus, continuous surveillance
148 will be needed to monitor intercontinental transmission of antimicrobial-resistant strains and
149 support the global management of typhoid fever.

150

151 **References**

- 152 [1] Crump JA, Mintz ED. Global Trends in Typhoid and Paratyphoid Fever. *Clin Infect Dis*
153 2010;50:241–6. <https://doi.org/10.1086/649541>.
- 154 [2] Mogasale V, Maskery B, Ochiai RL, Lee JS, Mogasale V V., Ramani E, et al. Burden of
155 typhoid fever in low-income and middle-income countries: A systematic, literature-based
156 update with risk-factor adjustment. *Lancet Glob Heal* 2014;2:e570–80.
157 [https://doi.org/10.1016/S2214-109X\(14\)70301-8](https://doi.org/10.1016/S2214-109X(14)70301-8).
- 158 [3] Dyson ZA, Klemm EJ, Palmer S, Dougan G. Antibiotic Resistance and Typhoid. *Clin*
159 *Infect Dis* 2019;68:S165–70. <https://doi.org/10.1093/cid/ciy1111>.
- 160 [4] Wong VK, Baker S, Pickard DJ, Parkhill J, Page AJ, Feasey NA, et al. Phylogeographical
161 analysis of the dominant multidrug-resistant H58 clade of *Salmonella* Typhi identifies
162 inter-and intracontinental transmission events. *Nat Genet* 2015;47:632–9.
163 <https://doi.org/10.1038/ng.3281>.
- 164 [5] Park SE, Pham DT, Boinett C, Wong VK, Pak GD, Panzner U, et al. The phylogeography
165 and incidence of multi-drug resistant typhoid fever in sub-Saharan Africa. *Nat Commun*
166 2018;9. <https://doi.org/10.1038/s41467-018-07370-z>.
- 167 [6] Thanh DP, Karkey A, Dongol S, Thi NH, Thompson CN, Rabaa MA, et al. A novel
168 ciprofloxacin-resistant subclade of h58. *Salmonella typhi* is associated with
169 fluoroquinolone treatment failure. *Elife* 2016;5:1–13. <https://doi.org/10.7554/eLife.14003>.
- 170 [7] Nüesch-Inderbilen M, Abgottspon H, Sägesser G, Cernela N, Stephan R. Antimicrobial
171 susceptibility of travel-related *Salmonella enterica* serovar Typhi isolates detected in

- 172 Switzerland (2002-2013) and molecular characterization of quinolone resistant isolates.
173 BMC Infect Dis 2015;15:1–5. <https://doi.org/10.1186/s12879-015-0948-2>.
- 174 [8] Chatham-Stephens K, Medalla F, Hughes M, Appiah GD, Aubert RD, Caidi H, et al.
175 Emergence of Extensively Drug-Resistant Salmonella Typhi Infections Among Travelers
176 to or from Pakistan - United States, 2016-2018. MMWR Morb Mortal Wkly Rep
177 2019;68:11–3. <https://doi.org/10.15585/mmwr.mm6801a3>.
- 178 [9] Korea Centers for Disease Control and Prevention (KCDC). Incidence of Legal infectious
179 disease in national monitoring index n.d.
180 http://www.index.go.kr/potal/main/EachDtlPageDetail.do?idx_cd=1442.
- 181 [10] Korea Centers for Disease Control and Prevention (KCDC). Korea infectious disease
182 portal n.d. <http://www.cdc.go.kr/npt/biz/npp/ist/bass/bassDissStatsMain.do>.
- 183 [11] Wirth T. Massive lineage replacements and cryptic outbreaks of Salmonella Typhi in
184 eastern and southern Africa. Nat Genet 2015;47:565–7. <https://doi.org/10.1038/ng.3318>.
- 185 [12] Renuka K, Sood S, Das BK, Kapil A. High-level ciprofloxacin resistance in Salmonella
186 enterica serotype Typhi in India. J Med Microbiol 2005;54:999–1000.
187 <https://doi.org/10.1099/jmm.0.45966-0>.
- 188 [13] Kim D-B, Kim S-H, Oh S-J, Kim D-K, Choi S-M, Kim M-S, et al. Three cases of
189 ciprofloxacin treatment failure in imported typhoid fever. Korean J Med 2009;77:377–81.
- 190 [14] Klemm EJ, Shakoor S, Page AJ, Qamar FN, Judge K, Saeed DK, et al. Emergence of an
191 extensively drug-resistant Salmonella enterica serovar typhi clone harboring a

192 promiscuous plasmid encoding resistance to fluoroquinolones and third-generation
193 cephalosporins. MBio 2018;9:1–10. <https://doi.org/10.1128/mBio.00105-18>.

194

195

196

197

198 **Funding**

199 This work was supported by grant from the Korea Centers for Disease Control and Prevention
200 [Grant Number 4837-311-210]. We thank all the members of our laboratory for their feedback
201 and support.

202

203 **Sequence data access**

204 The whole-genome data of this study have been deposited in BioProject under number
205 PRJNA551786. The raw reads are available in the Sequence Read Archive (SRA) under
206 accession number SRR9616298-SRR9616305.

207

208 **Ethical considerations**

209 The Ethics committee of the first affiliated Korea Centers for Disease Control and Prevention
210 decided that Institutional Review Board approval was not required. Because patient information
211 was collected anonymously and confidential patient information was not included.

212

213 **Table**

214 **Table 1. Antimicrobial resistance profiles and genomic analysis of the outbreak strains.**

ID No.	Traveler group	Date of diagnosis	MICs		Antimicrobial Resistance profile	Whole genome analysis				
			CIP	NAL AZI		Mutants in QRDRs	Screening of PMQRs	Replicon type	MLST haplotype	
KRSAL17-2203	A	22 July	0.25	>128 8	NAL, AZI	gyrA(S83F)	aac(6')-laa	IncFIB(pHCM2)	ST2	H50
KRSAL17-2207	A	6 Aug	0.25	>128 8	NAL, AZI	gyrA(S83F)	aac(6')-laa	IncFIB(pHCM2)	ST2	H50
KRSAL17-2205	A	6 Aug	0.25	>128 8	NAL, AZI	gyrA(S83F)	aac(6')-laa	IncFIB(pHCM2)	ST2	H50
KRSAL17-2206	A	13 Aug	0.25	>128 8	NAL, AZI	gyrA(S83F)	aac(6')-laa	IncFIB(pHCM2)	ST2	H50
KRSAL17-2218	B	18 Aug	>32	>128 16	CIP, NAL, AZI	gyrA(S83F,D87N) parC(S80I)	aac(6')-laa	-	ST1	H58
KRSAL17-2204	A	28 July	>32	>128 16	CIP, NAL, AZI	gyrA(S83F,D87N) parC(S80I)	aac(6')-laa	-	ST1	H58
KRSAL17-2217	B	18 Aug	>32	>128 16	CIP, NAL, AZI	gyrA(S83F,D87N) parC(S80I)	aac(6')-laa	-	ST1	H58
KRSAL17-2216	B	18 Aug	>32	>128 16	CIP, NAL, AZI	gyrA(S83F,D87N) parC(S80I)	aac(6')-laa	-	ST1	H58

215

216

217

218 **Figure legend**

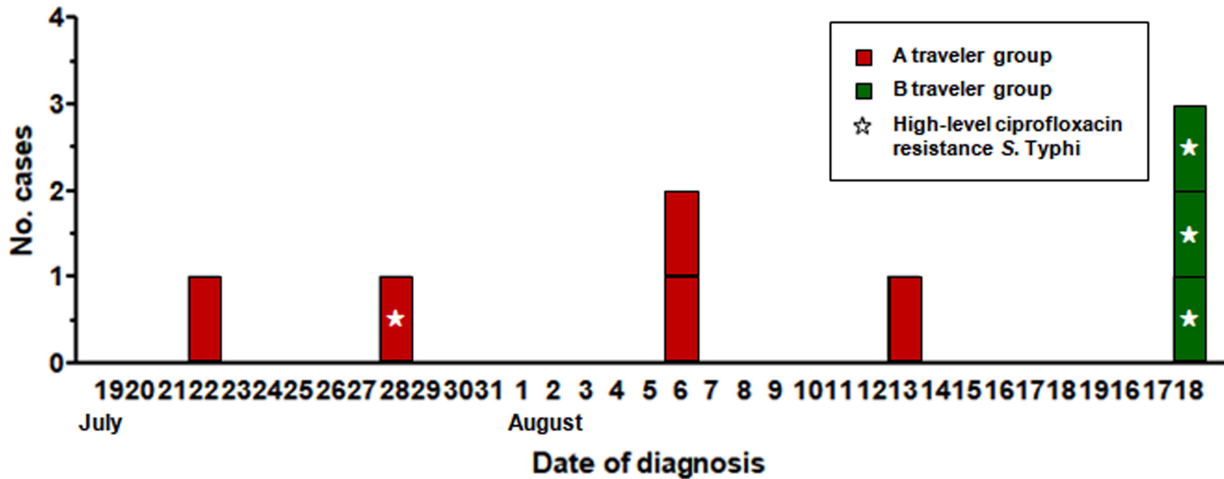
219 **Figure 1. Epidemic curve of typhoid fever outbreak by date of onset.**

220 Traveler group A cases are shown in red, and traveler group B cases are shown in green. Cases
221 of high-level ciprofloxacin-resistant *S. typhi* are marked with asterisks.

222
223 **Figure 2. Whole-genome sequencing trees of *S. Typhi* isolates based on SNP and wgMLST**
224 **analyses.**

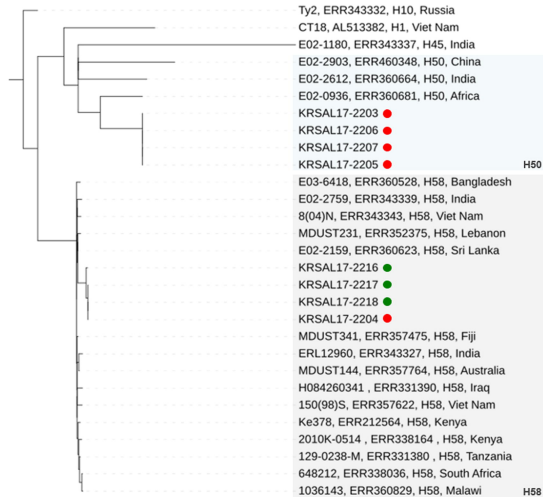
225 A, Maximum likelihood tree inferred from the 1577 identified SNPs and visualized by iTOL.
226 Comparative strains from the EBI (European Bioinformatics Institute) database and isolates are
227 marked in the following order: isolate name, Short Read Archive (SRA) accession number,
228 haplotype, and country. The numbers above the nodes represent data from bootstrap replicates.
229 B, Minimum spanning tree based on numerical values (15874 wgMLST loci). The branch
230 lengths are represented on a logarithmic scale. Traveler group A cases are shown by red circles,
231 and traveler group B cases are shown by green circles. The cluster of H58 strains is highlighted
232 in light grey, and the H50 strains are highlighted in light blue.

233



a

Tree scale: 0.1



b

