

1 **Transmissibility of coronavirus disease 2019 (COVID-19) in Chinese cities with**
2 **different transmission dynamics of imported cases**

3 Ka Chun Chong^{1,2}, Wei Cheng³, Shi Zhao^{1,2}, Feng Ling³, Kirran N. Mohammad¹, Maggie
4 Haitian Wang^{1,2}, Benny Chung Ying Zee^{1,2}, Lei Wei¹, Xi Xiong¹, Hengyan Liu¹,
5 Jingxuan Wang^{1*}, Enfu Chen^{3*}

6 **Affiliations:**

7 ^a The Chinese University of Hong Kong, Hong Kong SAR, China

8 ^b Shenzhen Research Institute, The Chinese University of Hong Kong, Shenzhen, China

9 ^c Zhejiang Province Centre for Disease Control and Prevention, Hangzhou, Zhejiang
10 Province, China

11

12 ***Address for correspondence**

13 Jingxuan Wang, School of Public Health and Primary Care, The Chinese University of
14 Hong Kong, Hong Kong SAR, China; phone number: 852-22528716; email:
15 jxwang@link.cuhk.edu.hk; Enfu Chen, Zhejiang Province Centre for Disease Control and
16 Prevention, Hangzhou, Zhejiang Province, China; phone number: 852-22528716 email:
17 enfchen@cdc.zj.cn

18

19 **Keywords:** COVID-19; Zhejiang; reproduction number; serial interval; travel restriction

20

21 Word count: 2455

22

23 **Abstract**

24 Background: Monitoring the time-varying reproduction number (R_t) of the disease is
25 useful in determining whether there is sustained transmission in a population. In this
26 study, we examined R_t of COVID-19 and compared its transmissibility between different
27 intervention periods in Hangzhou and Shenzhen.

28 Methods: Daily aggregated counts of confirmed imported and local cases between
29 January 1, 2020 and March 13, 2020 were analysed. A likelihood function was
30 constructed to estimate R_t , accounting for imported cases.

31 Results: Although Hangzhou had fewer number of cases than Shenzhen, Shenzhen had
32 higher proportion of imported cases than Hangzhou (83% vs 29%). Since the epidemic of
33 COVID-19 in Shenzhen was dominated by imported cases, R_t was kept below unity
34 through time. On the contrary, R_t was greater than unity in Hangzhou from 16 January to
35 7 February due to the surge in local cases. Credits to the Wuhan lockdown and outbreak
36 response measures following the local lockdown, R_t decreased steadily and dropped
37 below unity in mid-February.

38 Conclusion: The lockdown measures and local outbreak responses helped reduce the
39 potential of local transmission in Hangzhou and Shenzhen. Meanwhile, cities with similar
40 epidemic trend could have different transmission dynamics given the variation in
41 imported cases.

42 **Key words:** Time-varying reproduction number; Markov chain Monte Carlo method;
43 COVID-19; Hangzhou; Shenzhen

44

45 **Backgrounds**

46 Coronaviruses are a diverse group of enveloped, positive-sense, single-stranded RNA
47 viruses that belongs to the family Coronaviridae, order Nidovirales [1]. The diseases
48 caused by these viruses are zoonotic in nature, which can be transmitted between animals
49 and human [2]. In human, coronaviruses mainly cause respiratory tract infections with
50 severe acute respiratory syndrome (SARS) and Middle East respiratory syndrome (MERS)
51 being two notable examples. In December 2019, a novel strain of coronavirus that has not
52 been previously identified in human emerged and caused an outbreak in Wuhan, Hubei
53 province, China [3]. The disease responsible for the outbreak has been officially named
54 by the World Health Organization as coronavirus disease 2019 (COVID-19). Common
55 clinical manifestation of COVID-19 includes fever, fatigue, dry cough, shortness of
56 breath and muscle ache [4,5]. In severe cases, COVID-19 may progress to pneumonia or
57 even death. Symptoms such as headache, dizziness, sputum production, haemoptysis,
58 diarrhoea, nausea and vomiting are less common but occasionally reported. According to
59 the Centers for Disease Control and Prevention, COVID-19 is mainly spread from
60 person-to-person via respiratory droplets, but may also be spread from contact with
61 infected surfaces or objects [6]. At the moment, there is no vaccine nor specific antiviral
62 treatment approved for COVID-19.

63 The current global scale health crisis triggered by COVID-19 began on 31 December
64 2019, the day the World Health Organization was notified of several severe and unusual
65 cases of pneumonia in Wuhan. Despite the suspected source of transmission (Huanan
66 Seafood Wholesale Market) was shut down the next day, number of cases continued to
67 expand at an alarming rate [7]. Health experts soon identified the cause of the disease as

68 being a novel coronavirus that can be spread via airborne droplets and announced the
69 discovery on 7 January 2020. Two days later, the first related death was recorded in
70 Wuhan; meanwhile, the disease spread outside Hubei as people travel around and outside
71 the country, especially during "Chunyun", a 40-day period when Chinese people going
72 home to celebrate the Lunar New Year holidays. On 13 January 2020, Thailand reported
73 the first lab-confirmed case of COVID-19 outside mainland China and health authorities
74 of 19 other countries confirmed cases over the following days [8]. By 31 January 2020, a
75 total of 9,826 cases of COVID-19 were confirmed around the globe and the figure
76 surpassed 10,000 the next day.

77 To halt the spread of the virus, the Chinese government imposed a complete lockdown in
78 Wuhan and other cities in Hubei province on 23 January 2020 aiming to quarantine the
79 epicenter of the COVID-19 outbreak [9]. All public transportation, including buses,
80 railways, flights, and ferry services, was suspended and residents were forbidden from
81 leaving the city without permission from the authorities. Later, the government tightened
82 its quarantine measures and imposed a mandatory 14-day quarantine on people returning
83 to the capital from holidays. Meanwhile, a number of countries have imposed restrictions
84 on entry by travellers from China in response to the epidemic. Several early
85 investigations have shown that the shutdown of cities largely reduced the spread of
86 infections to other cities in China and other countries around the world [10-13].

87 Time-varying reproduction number (R_t) is defined as the average number of secondary
88 cases infected by a primary case at time t . R_t is a common measure for monitoring the
89 disease evolution in a population especially when some control measures have been
90 carried out to mitigate an epidemic. R_t below unity indicates a single case is unable to

91 produce more than one secondary case on average and the disease can unlikely be
92 sustained in a population over time. In this case, the outbreak can be regarded as under
93 control at time t [14]. In this study, we examined the transmission dynamics of COVID-
94 19 during the first wave of epidemic and compared its transmissibility between different
95 intervention periods in Hangzhou and Shenzhen, two Chinese cities with different
96 transmission dynamics of imported cases.

97 **Methods**

98 *Setting*

99 Hangzhou and Shenzhen are two major Chinese cities in terms of economy, population
100 and transportation. Hangzhou is the capital city of Zhejiang Province and one of the most
101 populous cities in East China. In 2018, the city's resident population was 9.8 million with
102 an estimation of 4 million floating population [15]. With 16,424 km length of highways,
103 well-developed railway transportation and 286 civil aviation routes between 160
104 domestic cities, the passenger traffic of Hangzhou was over 20 million in 2018 [16].

105 Similar to Hangzhou, Shenzhen is also a new-growing city characterized by high-
106 technology industry, large population of “migrant workers” and well-developed
107 transportation network. Located in Guangdong Province, it covers an area of around
108 2,000 km² and is the most populous city in South China. In 2018, the number of people
109 living in Shenzhen was estimated to be 25.7 million, among whom less than half were
110 long-term residents [17].

111 Wuhan, the source city of COVID-19, was lockdown on 23 January 2020. On the same
112 day, Hangzhou and Shenzhen declared first-level public health emergency in response to
113 the outbreak. Measures including promotion of personal hygiene, cessation of crowd

114 gathering activities, 7-day home quarantine of people from Hubei, restrictions of public
115 transports and mandatory quarantine for close contacts were adopted. On 4 February
116 2020, a lockdown was imposed in Hangzhou and only one person per household is
117 allowed to leave their home every two days. Public gatherings such as funerals and
118 weddings were banned; all public venues and work places were closed. On 7 February
119 2020, all living communities in Shenzhen were requested to lockdown in order to contain
120 the local outbreak [18].

121 *Data collection*

122 We obtained the daily aggregated data of laboratory confirmed COVID-19 cases in
123 Hangzhou and Shenzhen between January 1, 2020 and March 13, 2020 from the National
124 Health Commission and other official websites [18-20]. The date of illness onset (defined
125 by the first appearance of COVID-19 related symptoms) was used to construct the
126 epidemic curves. Cases with travel history to other provinces (with ≥ 1 case reported) 14
127 days prior to symptoms onset are defined as import cases.

128 *Estimation of reproduction numbers*

129 Since the COVID-19 was seeded by the imported cases in many cities outside Hubei, the
130 estimation equation from Thompson et al. [21], an alternative to Wallinga and Teunis
131 [22], was used, accounting for the risk of imported cases [23].

132 The total number of reported cases ($I(t)$) on day t ($t = 0, 1, 2, 3, \dots$) is the sum of imported
133 cases ($h_I(t)$) and local cases ($h_L(t)$). The total number of infections on day t can be
134 computed as

$$135 \quad \sum_{s=1}^t w_s I(t-s) = \sum_{s=1}^t w_s [h_L(t-s) + h_I(t-s)],$$

136 given w_s is a discretized probability distribution function of the serial interval of COVID-
137 19. The expected number of local cases, $E[h_L(t)]$, is

138
$$E[h_L(t)] = R_t \sum_{s=1}^t w_s [h_L(t-s) + h_I(t-s)].$$

139 Assuming the number of local infections follows a Poisson distribution, a likelihood
140 function, $L(\cdot)$, can be formed as follows

141
$$L(R_t) = \prod_i \left(\frac{\{E[h_L(i)]\}^{n_L(i)} e^{-E[h_L(i)]}}{n_L(i)!} \right),$$

142 where $n_L(t)$ is the observed numbers of local cases on day t .

143 We used Markov chain Monte Carlo (MCMC) method to estimate the R_t series based on
144 the observed epidemic curves. Using an early estimate of serial interval [13], we assumed
145 the length of the serial interval follows a lognormal distribution with a mean of 4.4 days
146 and a standard deviation (SD) of 3 days. The sensitivity of results to shorter serial interval
147 of 2.0 days (SD: 2.8) [24] and longer serial interval of 7.5 days (SD: 3.4) [25] was tested.
148 A random walk Metropolis algorithm was used to obtain the posterior distributions of R_t .
149 Step sizes were selected to obtain acceptance proportions of 20 to 40%. Twenty thousand
150 MCMC iterations were used as the burn-in period and subsequent 100,000 iterations were
151 used to obtain the estimates. The median and 95% credible intervals (CIs) were
152 calculated to summarize the estimates. The analysis in this study was carried out using
153 software R (version 3.6.3).

154 **Results**

155 The temporal distribution of cases and R_t s in Shenzhen and Hangzhou were shown in
156 Figure 1 and Figure 2 respectively. Shenzhen had the first imported case with illness
157 onset on 1 January, whereas Hangzhou had the first imported case with illness onset on

158 13 January. From 1 January to 13 March, there were a total of 169 and 417 confirmed
159 cases in Hangzhou and Shenzhen respectively. Both cities had their peak incidence of
160 cases in the week between 22 and 29 January and the epidemics died out in mid-February.
161 In general, although Hangzhou had a fewer number of cases than Shenzhen, Hangzhou
162 had a lower percentage of imported cases than Shenzhen (29% vs 83%). Due to the
163 epidemic in Shenzhen was dominated by imported cases, local R_t was kept below unity
164 through time. In the early phase of the epidemic, R_t was maintained to be around 0.2 to
165 0.4, indicating a low risk of local transmission despite the rapid increase in daily number
166 of cases before the lockdown of Wuhan (i.e. on 23 January). After the lockdown of
167 Wuhan and the initialization of measures in response to the outbreak, local transmission
168 was well-controlled as indicated by a low estimated value of R_t (i.e. < 0.2).
169 In contrast, R_t was larger than unity in Hangzhou from 16 January to 7 February. Before
170 the lockdown of Wuhan, R_t obtained ranged from 1.9 to 3.8, indicating a high risk of
171 local transmission. Credits to the Wuhan lockdown and outbreak response measures
172 following the local lockdown, R_t dropped steadily and was 1.14 (95% CI: 1.04 to 1.25) on
173 4 February. After that, R_t kept decreasing slightly and dropped below unity on 10
174 February, indicating the outbreak was controlled in Hangzhou.
175 Sensitivity analysis was used to assess the robustness of estimated R_t to different serial
176 interval durations (Figure 3). While a variation in the length of serial interval did not
177 affect the estimated R_t s in Shenzhen overall, a moderately increased R_t was observed for
178 Hangzhou during the first week when a longer serial interval was assumed.

179 **Discussion**

180 Monitoring the transmission dynamics as well as the R_t of the disease is useful in 1.
181 determining whether there is sustained community transmission in a population and 2.
182 evaluating whether the control measures taken are adequate to control the local
183 transmission at a specific time [26-28]. In this study, we estimated the imported-cases-
184 adjusted R_t of COVID-19 in the first wave of epidemic in Hangzhou and Shenzhen, two
185 Chinese cities with different transmission dynamics of imported cases. According to our
186 results, the disease transmissibility in both cities gradually decreased over time especially
187 after the lockdown of Wuhan. Credits to the community lockdown, the transmission was
188 interrupted within a short period of time in Hangzhou. In line with Lai et al. [29], inter-
189 city travel restrictions and other social distancing interventions could slow down the
190 epidemics outside Wuhan.

191 We showed that local transmission of COVID-19 seeded by imported cases was not
192 sustained in Shenzhen and we speculated it was likely due to the decrease in number of
193 local susceptibles during Chunyun. Of the 13 million residents in Shenzhen, around 65%
194 of its population were migrants which ranked top in China, and most of the residents have
195 returned to their home towns starting from 10 January for celebration of Lunar New Year
196 [17,30]. Given the number of local susceptibles decreased as a large number of residents
197 left Shenzhen during Chunyun, fewer transmission chains could be established during
198 this period even though Shenzhen is highly connected to Wuhan for most of the times.

199 Tian et al. [11] indicated that Chinese cities that implemented control measures before
200 officials confirmed the first case were more likely to have fewer cases. Even though the
201 first case in Shenzhen was confirmed on 19 January (illness onset on 3 January), we
202 believe Shenzhen is an exception owing to its special population characteristics. In line

203 with Kucharski et al. [31], the case study of Shenzhen supported that introducing one to
204 several cases to a new city may not necessarily lead to an outbreak.

205 Comparing with Shenzhen, Hangzhou is not just a highly populated city with fewer
206 migrants, but is also geographically closer to Wuhan. By implementing strict control
207 measures before cases emerged, local transmissions were comparatively easier to be
208 seeded in Hangzhou. Compared to the transmission dynamics in Wuhan [31], R_t in
209 Hangzhou displayed a consistently declining trend starting from mid-January. This may
210 be due to the increased awareness on the use of personal protective measures against
211 COVID-19 after noticing the unknown pneumonia outbreak in Wuhan in early January
212 through social media. Similar transmission dynamics was also reported in Shaanxi
213 province [32].

214 In this study, we showed that even though more cases were reported in Shenzhen when
215 compared to Hangzhou, they exhibited different transmission dynamics of COVID-19
216 when the risk of imported cases was accounted in the estimation. With more local cases
217 emerged during the initial phase of the epidemic, the disease sustained in Hangzhou
218 before the lockdown of Wuhan and the initiation of outbreak response. For cities or
219 provinces with a large proportion of imported cases, failing to differentiate them from
220 local cases during R_t calculation may lead to overestimation of transmissibility in a local
221 population [33], and thus, affect the planning of mitigation measures. The importance of
222 accounting for imported cases has been demonstrated in another study that looked into
223 Middle East Respiratory Syndrome in Saudi Arabia [21].

224 Our study has several major limitations. Recent studies have successively reported that
225 some patients infected with COVID-19 might infect others before their symptom onset

226 [24,34]. Disease transmission during the pre-symptomatic stage implies the possibility of
227 having a negative value of serial interval. This would affect the formulation of estimation
228 equation since the distributional assumption did not give it a corresponding probability.
229 Alternatively, a generation interval could be used but it is usually hard to be estimated
230 due to unobserved infectiousness onset. Nevertheless, our sensitivity analysis
231 demonstrated that the variation of serial interval within a reasonable range did not affect
232 our main conclusion. Another limitation is the underreporting of confirmed cases due to
233 the unavailability of virological testing in the early stage of epidemic. According to an
234 early investigation [35], an estimate of 75 thousand individuals were found to be
235 infected in Wuhan as of 25 January and we believe similar underreporting was likely to
236 occur in our setting. With detailed data available on reporting rates and serological
237 surveillance, our analytic frame can be extended to a more complex context that
238 incorporates these factors. In addition, our estimates shall be refined if more updated
239 knowledge of the pathogen is available.

240 In conclusion, we showed the lockdown measures and local outbreak responses helped
241 reduce the potential of local transmission in Hangzhou and Shenzhen. The low
242 transmission intensity of COVID-19 in Shenzhen in early January was likely due to the
243 decrease in number of local susceptibles as residents left the city for Chunyun. We also
244 highlighted that cities with similar epidemic trend could have different transmission
245 dynamics given the variation in imported cases.

246

247 **Acknowledgments**

248 We thank the physicians and staffs at Hangzhou, Huzhou, Jiaxing Wenzhou, Shaoxing,
249 Ningbo, Quzhou, Jinhua, Zhoushan, Lishui, Taizhou Municipal Center for Disease
250 Control and Prevention for their support and assistance with this investigation.

251 **Funding**

252 The work is supported by National Natural Science Foundation of China (31871340,
253 71974165). The funder has no role in the study design, in the collection, analysis and
254 interpretation of data.

255 **Conflict of interest**

256 No conflict of interest to declare.

257 **Ethics**

258 All data were collected via official websites and publicly available so neither ethical
259 approval nor individual consent was not applicable.

260 **Reference**

- 261 1. Richman DD, Whitley RJ, Hayden FG, eds. Clinical virology, 4th edn. Washington:
262 ASM Press, 2016.
- 263 2. World Health Organization (WHO). Coronavirus. 2020. Available from:
264 <https://www.who.int/health-topics/coronavirus> [accessed 22 Feb 2020]
- 265 3. World Health Organization. Novel coronavirus – China. Jan 12, 2020. 2020.
266 Available from: [https://www.who.int/csr/don/12-january-2020-novel-coronavirus-](https://www.who.int/csr/don/12-january-2020-novel-coronavirus-china/en/)
267 [china/en/](https://www.who.int/csr/don/12-january-2020-novel-coronavirus-china/en/) [accessed 22 Feb 2020]
- 268 4. Huang C, Wang Y, Li X, et al. Clinical features of patients infected with 2019 novel
269 coronavirus in Wuhan, China. *Lancet* 2020;395(10223):497-506.
- 270 5. Chen N, Zhou M, Dong X, et al. Epidemiological and clinical characteristics of 99
271 cases of 2019 novel coronavirus pneumonia in Wuhan, China: a descriptive study.
272 *Lancet* 2020;395(10223):507-513.
- 273 6. Centers for Disease Control and Prevention (CDC). About Coronavirus Disease 2019
274 (COVID-19). Available from: [https://www.cdc.gov/coronavirus/2019-](https://www.cdc.gov/coronavirus/2019-ncov/about/index.html)
275 [ncov/about/index.html](https://www.cdc.gov/coronavirus/2019-ncov/about/index.html) [accessed 22 Feb 2020]
- 276 7. World Health Organization. Novel Coronavirus (2019-nCoV) Situation Report – 1.
277 2020. Available from: [https://www.who.int/docs/default-](https://www.who.int/docs/default-source/coronaviruse/situation-reports/20200121-sitrep-1-2019-ncov.pdf?sfvrsn=20a99c10_4)
278 [source/coronaviruse/situation-reports/20200121-sitrep-1-2019-](https://www.who.int/docs/default-source/coronaviruse/situation-reports/20200121-sitrep-1-2019-ncov.pdf?sfvrsn=20a99c10_4)
279 [ncov.pdf?sfvrsn=20a99c10_4](https://www.who.int/docs/default-source/coronaviruse/situation-reports/20200121-sitrep-1-2019-ncov.pdf?sfvrsn=20a99c10_4) [accessed 22 Feb 2020]
- 280 8. World Health Organization. Novel Coronavirus (2019-nCoV) Situation Report – 11.
281 2020. Available from: <https://www.who.int/docs/default->

- 282 source/coronaviruse/situation-reports/20200131-sitrep-11-
283 ncov.pdf?sfvrsn=de7c0f7_4 [accessed 22 Feb 2020]
- 284 9. Zhao S, Stone L, Gao D, et al. Imitation dynamics in the mitigation of the novel
285 coronavirus disease (COVID-19) outbreak in Wuhan, China from 2019 to 2020.
286 *Annals of Translational Medicine*. In press.
- 287 10. Anzai A, Kobayashi T, Linton NM, et al. Assessing the impact of reduced travel on
288 exportation dynamics of novel coronavirus infection (COVID-19). *Journal of Clinical*
289 *Medicine* 2020 Feb;9(2):601.
- 290 11. Tian H, Liu Y, Li Y, et al. Early evaluation of transmission control measures in
291 response to the 2019 novel coronavirus outbreak in China. *medRxiv* 2020 Jan.
- 292 12. Chinazzi M, Davis JT, Ajelli M, et al. The effect of travel restrictions on the spread of
293 the 2019 novel coronavirus (COVID-19) outbreak. *Science* 2020 Mar.
- 294 13. Zhao S, Gao D, Zhuang Z, et al. Estimating the serial interval of the novel
295 coronavirus disease (COVID-19): A statistical analysis using the public data in Hong
296 Kong from January 16 to February 15, 2020. *medRxiv* 2020 Jan.
- 297 14. De Serres G, Gay NJ, Farrington CP. Epidemiology of transmissible diseases after
298 elimination. *Am J Epidemiol* 2000;151(11):1039-48.
- 299 15. Municipality of Hangzhou. Bulletin on 2018 Hangzhou population. In: "China
300 Hangzhou" Government Portal. 2019. Available from:
301 http://www.hangzhou.gov.cn/art/2019/2/14/art_805865_30213801.html [accessed 9
302 March 2020]
- 303 16. Hangzhou Statistics Bureau. Transportation, post and telecommunication. In:
304 *Hangzhou Statistical Yearbook 2018*. China Statistics Press. [accessed 9 March 2020]

- 305 17. Shenzhen Bureau of Statistics. Shenzhen statistical yearbook. 2019. Available from:
306 http://tjj.sz.gov.cn/zwgk/zfxxgkml/tjsj/tjnj/201912/t20191230_18956670.htm
307 [accessed 9 March 2020]
- 308 18. Shenzhen Municipal Health Commission [Internet]. COVID-19 News. Available
309 from: <http://wjw.sz.gov.cn/> [accessed 9 March 2020]
- 310 19. Hangzhou Center for Disease Control and Prevention (CDC). Statistics. Available
311 from: <http://www.hzcdc.net/jbkz/jbkz01.htm> [accessed 15 March 2020]
- 312 20. National Health Commission of the People's Republic of China (NHC). COVID-19
313 prevention and Control. Available from:
314 http://www.nhc.gov.cn/xcs/yqtb/list_gzbd.shtml [accessed 15 March 2020]
- 315 21. Thompson RN, Stockwin JE, van Gaalen RD, et al. Improved inference of time-
316 varying reproduction numbers during infectious disease outbreaks. *Epidemics*
317 2019;29:100356.
- 318 22. Wallinga J, Teunis P. Different epidemic curves for severe acute respiratory
319 syndrome reveal similar impacts of control measures. *Am J Epidemiol*
320 2004;160(6):509-16.
- 321 23. Chong KC, Cheng W, Zhao S, et al. Monitoring Disease Transmissibility of 2019
322 Novel Coronavirus Disease in Zhejiang, China. *medRxiv*. 2020 Mar 5.
323 (<https://doi.org/10.1101/2020.03.02.20028704>)
- 324 24. Du Z, Xu X, Wu Y, Wang L, Cowling BJ, Meyers LA. The serial interval of COVID-
325 19 from publicly reported confirmed cases. *medRxiv* 2020 Mar 13.

- 326 25. Li Q, Guan X, Wu P, Wang X, Zhou L, Tong Y, Ren R, Leung KS, Lau EH, Wong
327 JY, Xing X. Early transmission dynamics in Wuhan, China, of novel coronavirus-
328 infected pneumonia. *New England Journal of Medicine*. 2020 Jan 29.
- 329 26. Nishiura H, Chowell G. The effective reproduction number as a prelude to statistical
330 estimation of time-dependent epidemic trends. In: *Mathematical and statistical*
331 *estimation approaches in epidemiology 2009* (pp. 103-121). Springer, Dordrecht.
- 332 27. Chong KC, Zhang C, Zee BC, et al. Interpreting the transmissibility of measles in two
333 different post periods of supplementary immunization activities in Hubei, China.
334 *Vaccine* 2017;35(7):1024-9.
- 335 28. Chong KC, Hu P, Lau S, et al. Monitoring the age-specificity of measles
336 transmissions during 2009-2016 in Southern China. *PloS one* 2018;13(10):e0205339.
- 337 29. Lai S, Ruktanonchai NW, Zhou L, et al. Effect of non-pharmaceutical interventions
338 for containing the COVID-19 outbreak: an observational and modelling study.
339 *medRxiv*. 2020 Mar 13.
- 340 30. CNN. 3 billion journeys: World's biggest human migration begins in China. 2020.
341 Available from: [https://edition.cnn.com/travel/article/chunyun-2020-lunar-new-year-](https://edition.cnn.com/travel/article/chunyun-2020-lunar-new-year-travel-rush-china/index.html)
342 [travel-rush-china/index.html](https://edition.cnn.com/travel/article/chunyun-2020-lunar-new-year-travel-rush-china/index.html) [accessed 15 March 2020]
- 343 31. Kucharski AJ, Russell TW, Diamond C, et al. Early dynamics of transmission and
344 control of COVID-19: a mathematical modelling study. *Lancet Infect Dis* 2020. In
345 press.
- 346 32. Tang S, Tang B, Bragazzi NL, et al. Stochastic discrete epidemic modeling of
347 COVID-19 transmission in the Province of Shaanxi incorporating public health
348 intervention and case importation. *medRxiv* 2020 Feb 29.

- 349 33. Xu L, Yuan J, Zhang Y, et al. Highland of COVID-19 outside Hubei: epidemic
350 characteristics, control and projections of Wenzhou, China. medRxiv 2020 Feb 29.
- 351 34. Nishiura H, Linton NM, Akhmetzhanov AR. Serial interval of novel coronavirus
352 (COVID-19) infections. Int J Infect Dis 2020 Mar.
- 353 35. Wu JT, Leung K, Leung GM. Nowcasting and forecasting the potential domestic and
354 international spread of the 2019-nCoV outbreak originating in Wuhan, China: a
355 modelling study. Lancet 2020;395(10225):689-97.
- 356

357 **Figure Legends**

358 Figure 1. (A) Epidemic trend and (B) Estimate (solid line) and 95% credible intervals

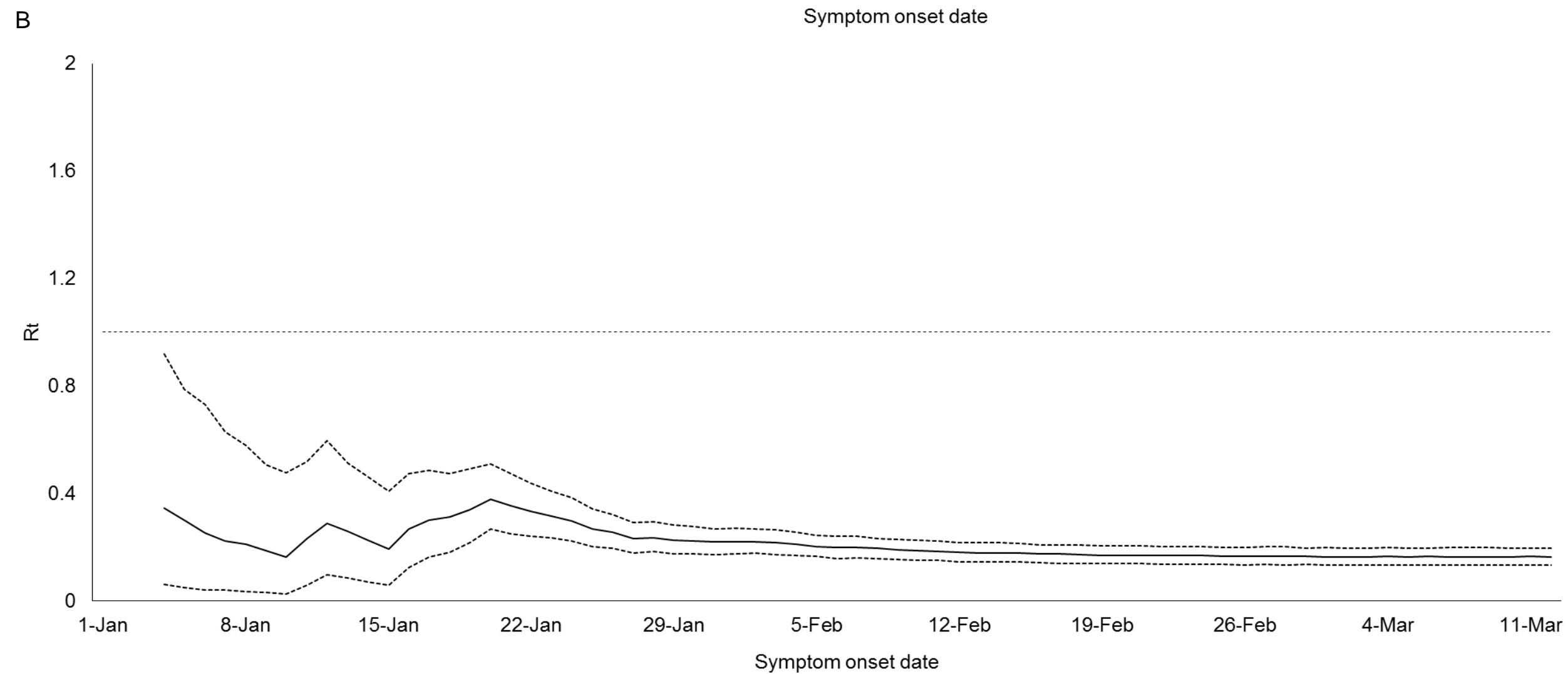
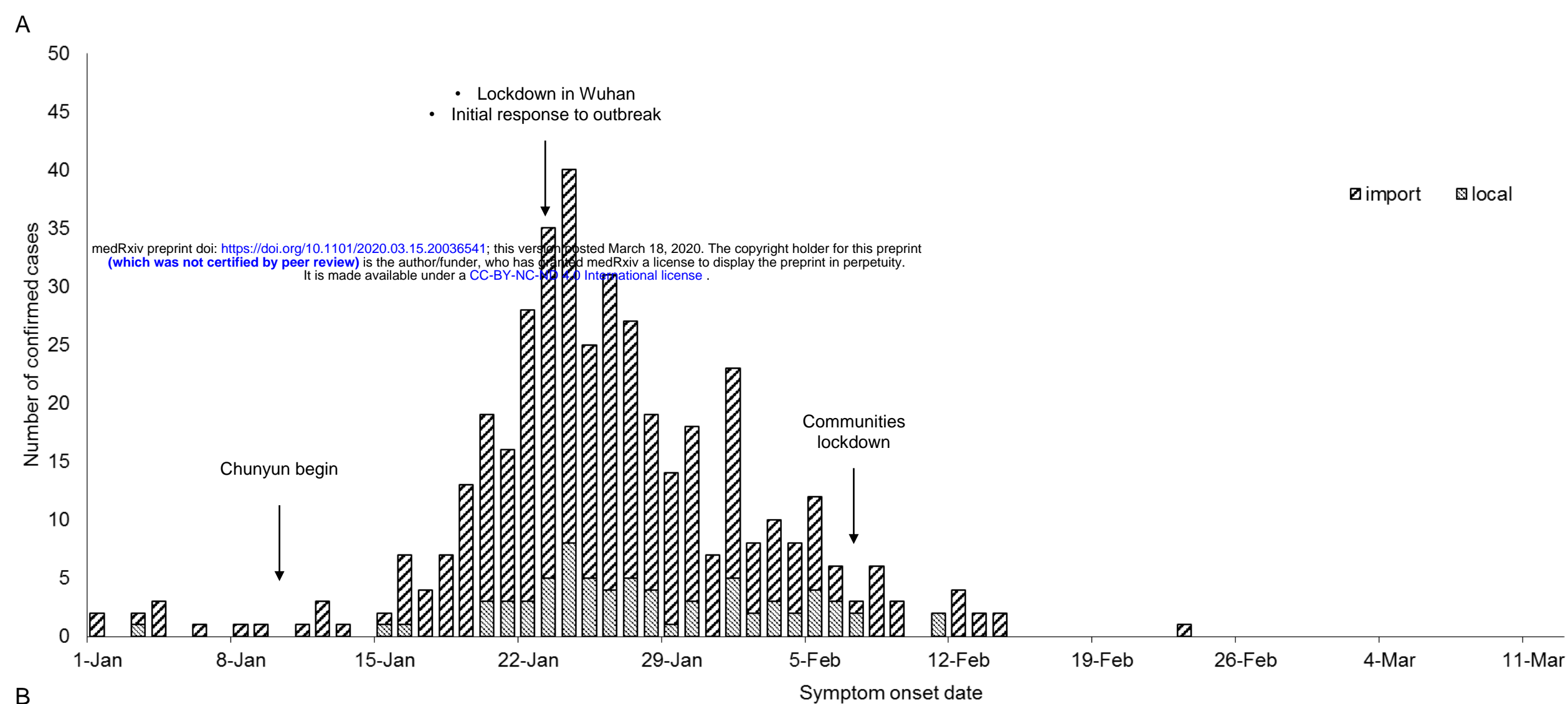
359 (dotted lines) of the time-varying reproduction number (R_t) in Hangzhou

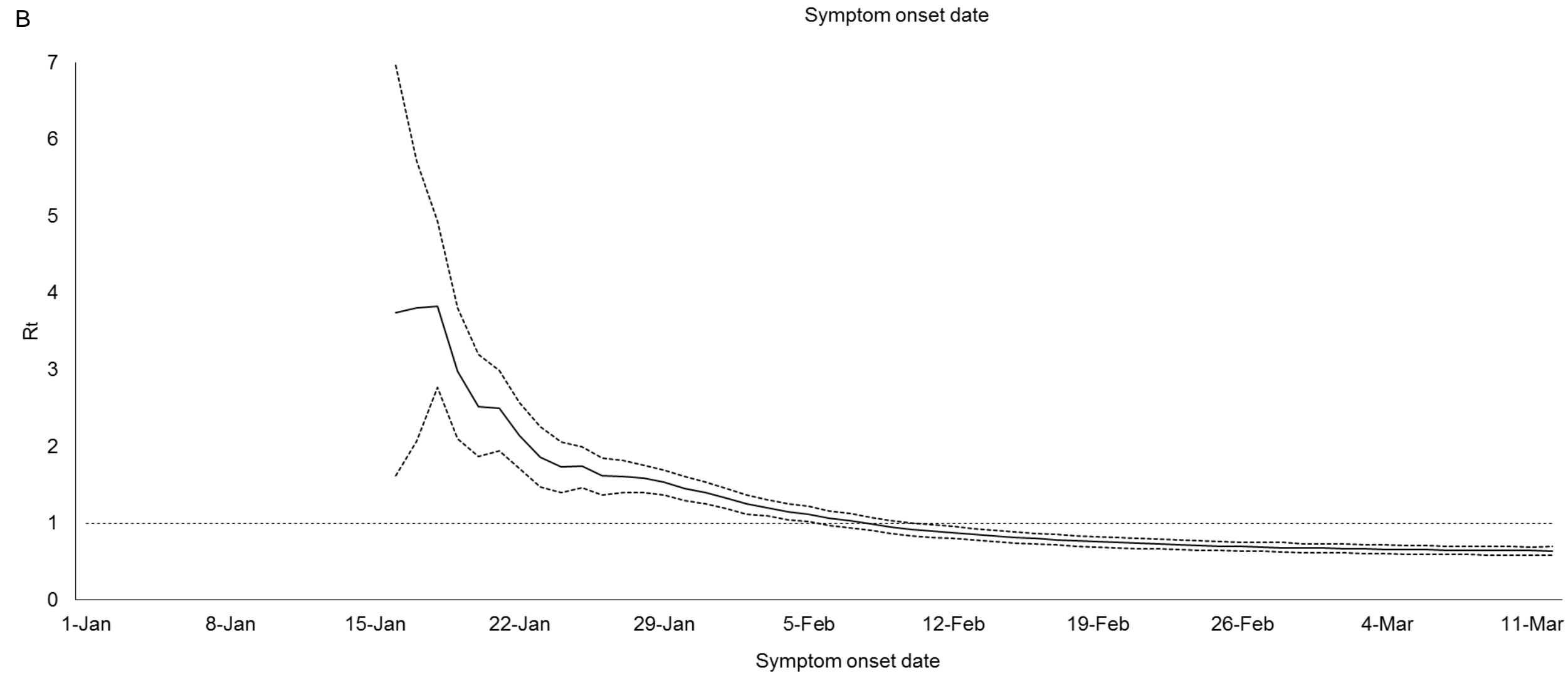
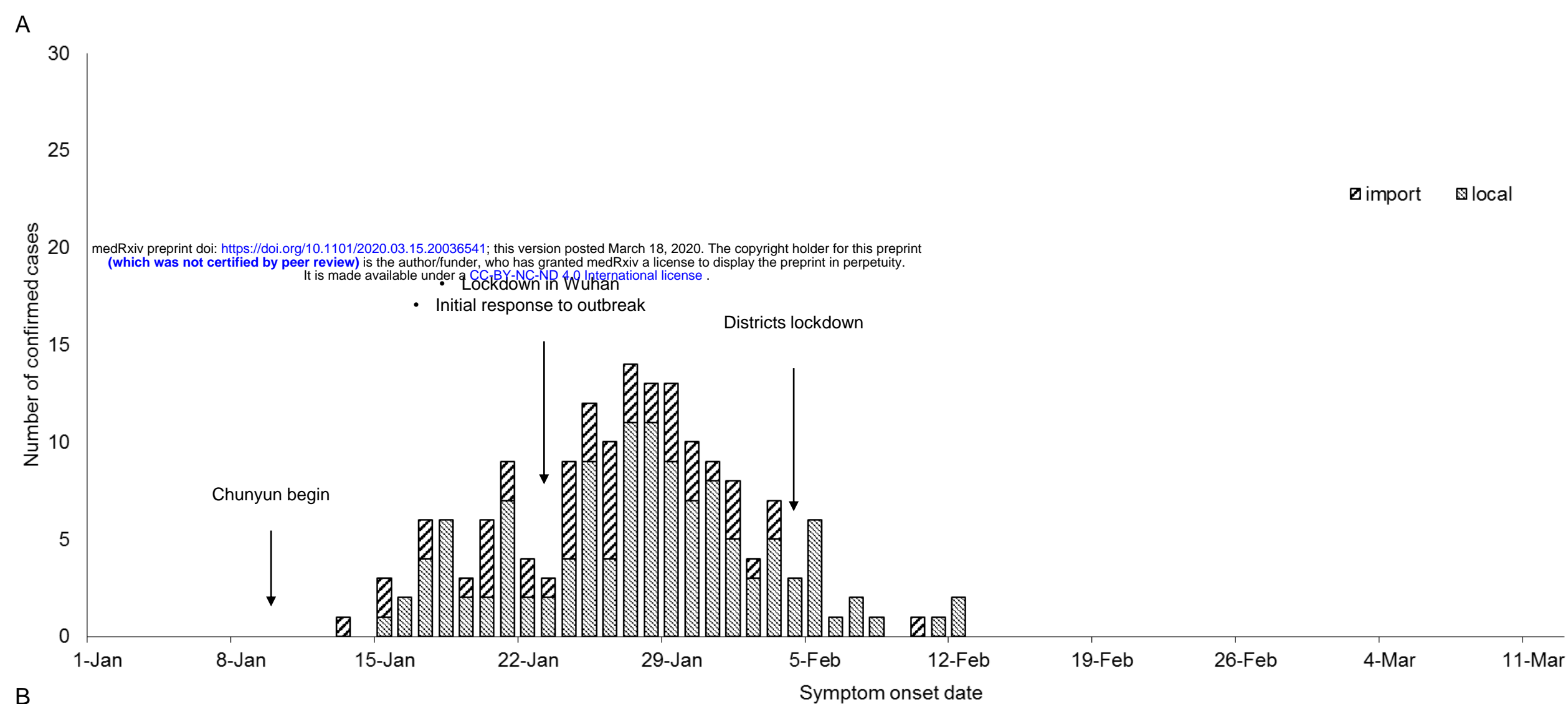
360 Figure 2. (A) Epidemic trend and (B) Estimate (solid line) and 95% credible intervals

361 (dotted lines) of the time-varying reproduction number (R_t) in Shenzhen

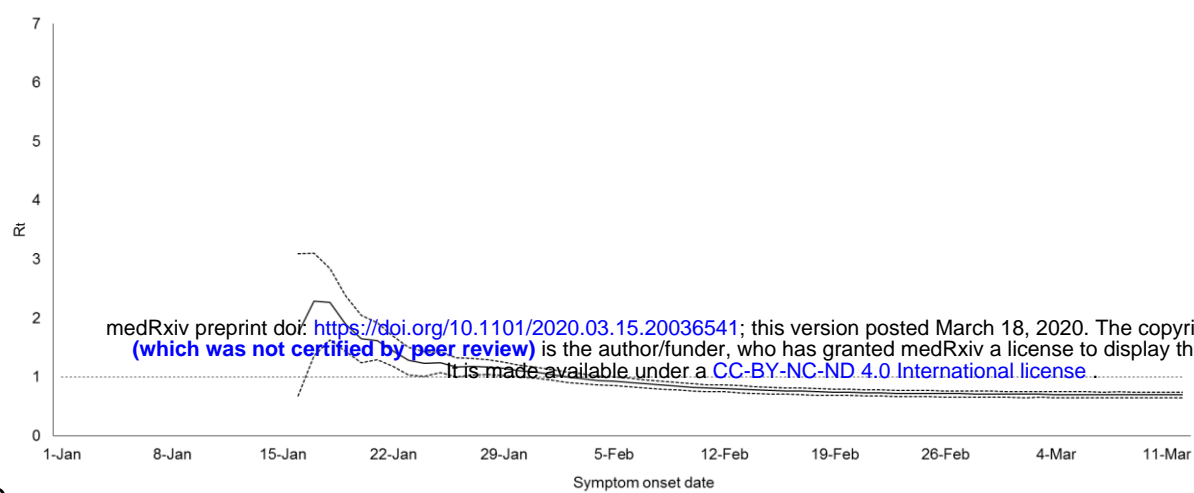
362 Figure 3. Time-varying reproduction number (R_t) assuming a shorter (A, C) and longer

363 serial interval (B, D) in Hangzhou (A, B) and Shenzhen (C, D) respectively.

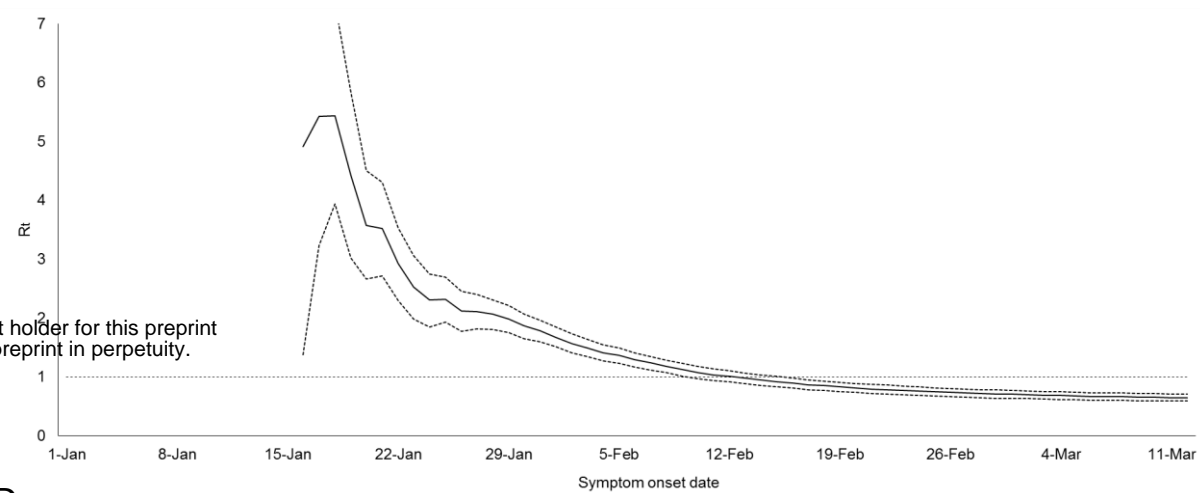




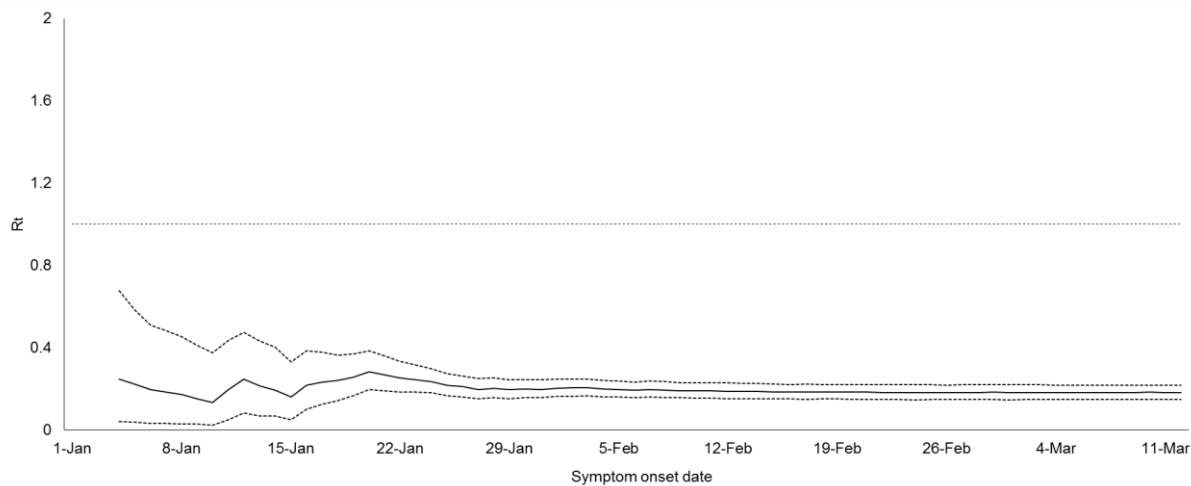
A



B



C



D

