

Clinical Characteristics of Coronavirus Disease 2019 (COVID-19): An Updated Systematic Review

**Zhangfu Fang^{a,b,c,#}, Fang Yi^{c,#}, Kang Wu^c, Kefang Lai^c, Xizhuo Sun^a,
Nanshan Zhong^{c*}, Zhigang Liu^{a,b*}**

- a. Department of Respiriology & Allergy. Third Affiliated Hospital of Shenzhen University. Shenzhen (518020), China.**
- b. State Key Laboratory of Respiratory Disease for Allergy at Shenzhen University, Shenzhen Key Laboratory of Allergy & Immunology, Shenzhen University School of Medicine, Shenzhen (518061), China.**
- c. State Key Laboratory of Respiratory Disease, National Clinical Research Center for Respiratory Disease, Guangzhou Institute of Respiratory Health, The First Affiliated Hospital of Guangzhou Medical University, Guangzhou Medical University, Guangzhou (510120), China**

***Correspondence :**

Nanshan Zhong

Professor, State Key Laboratory of Respiratory Disease,
Guangzhou Institute of Respiratory Health,
the First Affiliated Hospital of Guangzhou Medical University.
151 Yanjiang Rd., Guangzhou (510120), China
Email: nanshan@vip.163.com; Tel: 8620-83062718; Fax: 8620-83062729

Zhigang Liu

Professor, the State Key Laboratory of Respiratory Disease for Allergy,
Shenzhen University School of Medicine, Shenzhen University.
1066 Xueyuan Rd., Nanshan district of Shenzhen (518061), China
Email: lzg195910@126.com; Tel: 86755-86671907; Fax:86755-86671906

#The authors contribute equally to this work.

Running title: Clinical characteristics of COVID-19

Abstract

OBJECTIVE

Clinical characteristics of novel coronavirus disease (COVID-19) have been described in numerous studies but yielded varying results. We aimed to conduct a systematic review on scientific literatures and to synthesize critical data on clinical traits of COVID-19 from its initial outbreak to pandemic.

METHODS

Systematic searches were conducted to identify retrospective observational study that contained clinical characteristics on COVID-19 through multiple databases. Two reviewers independently evaluated eligible publications. Data on clinical characteristics of COVID-19 were extracted and analyzed.

RESULTS

Seventy-two retrospective studies demonstrating the clinical characteristics of COVID-19 were included. A total of 3470 COVID-19 patients were synthesized to the final analysis in an unbiased manner. The most common symptom was fever (2878 [83.0%]), and 63.4% of the patients presented fever as onset symptom. There were 2528 [88.2%] of 2866 cases had abnormal lung findings on chest CT scan. Laboratory findings showed that 1498 [62.8%] of 2387 cases had lymphopenia, and 1354 [64.8%] of 2091 cases had an increased level of C-reactive protein (CRP). A total of 185 [11.5%] patients were admitted to intensive care unit (ICU) while the overall case fatality rate (CFR) was 3.7%. Compared to patients admitted outside of Hubei, China, those from Hubei had a significant higher ICU admission rate (21.9% vs. 2.5%, $p<0.001$). Also, CFR attributed to COVID-19 was significantly higher in Hubei than that of non-Hubei admissions (10.4% vs. 0.6%, $p<0.001$).

INTERPRETATION

This large patient-based systematic review presents a more precise profiling of the COVID-19 from its outbreak to current pandemic. Dynamic evolvments of COVID-19 are needed to be characterized in future studies.

Keywords: coronavirus pneumonia, COVID-19, clinical characteristic, systematic

review

Introduction

In December 2019, a clustering pneumonia of unknown etiology occurred in Wuhan, Hubei Province, China¹. The emerging disease has spread rapidly from Wuhan to other parts of China and to other countries². Through a deep sequencing analysis, the virus responsible for this epidemic pneumonia has been designated as SARS-CoV-2 by International Committee on Taxonomy of Viruses (ICTV)³. The emerging disease caused by SARS-CoV-2 was named coronavirus disease 2019 (COVID-19) by WHO. By March 5, 2020, a total of 80,565 cases in China have been confirmed. Outside China, 14,768 cases of COVID-19 have been confirmed spanning in 85 countries, and the numbers are still on the rise⁴. What's worse is that a total of 1,716 healthcare workers in China have been infected, among which 5 have died by February 11, 2020⁵. Thus, this infectious disease has become a serious global health concern.

Since the outbreak of COVID-19, a large number of articles have been published reporting epidemiologic and clinical characteristics of this emerging disease. Huang et al. first reported 41 cases of COVID-19 in which 66% patients had a history of exposure to Huanan Seafood Market, Wuhan. Common symptoms of the case series were fever (98%), cough (76%), and myalgia or fatigue (44%) with a case fatality rate (CFR) of 15%⁶. Chen et al. in a subsequent study found that 99 cases of COVID-19 patients admitted to the same hospital (Jin Yin-tan Hospital, Wuhan) had similar trends of symptoms and CFR (11%)⁷. Another case series analysis of 138 COVID-19 patients in Wuhan showed a relatively higher rate of fatigue symptom (69.6%) but lower CFR (4.3%) when compared to the above center⁸. Lastly, Xu et al.⁹ found in a multicenter-based retrospective study that clinical symptoms of patients in Zhejiang province are milder than those observed in Wuhan, China. Similarly, a nationwide multicenter study in China showed that patients with COVID-19 did not have a specific clinical symptom¹⁰. The clinical traits of COVID-19 are of great importance for the early identification of cases and for developing isolation and preventive strategies. However, there exist inconsistent findings of the clinical characteristics of

COVID-19 among different studies, partly due to anthropogenic differences in patients enrolled and differences in sample size across different studies. Notably, variation in reporting descriptive data may lead to the misunderstanding of COVID-9 characteristics. In this updated systematic review, hence, we sought to address the heterogeneities among published retrospective studies and to synthesize the available data. We expect this critical review will provide insights to understand the clinical characteristics of COVID-19 in a more systematic manner.

Methods

Identification of Documents on COVID-9

Systematic searches were performed via the Medline database (PubMed) and Embase combining the terms (novel coronavirus OR 2019 novel coronavirus OR 2019-nCoV OR Coronavirus disease 2019 OR COVID-19 OR SARS-CoV-2). We also searched the database of Chinese Medical Journal full-text database (<http://journal.yiigle.com/>) for publications in Chinese using the above strategies. Searches were limited to publications from January 1, 2020 to March 1, 2020.

Publication Selection

Two of the authors (Z. F. and F. Y.) independently screened searching results to determine inclusion or exclusion of the articles. Disagreements were modulated by consulting another author as adjudicator (Z. L.). We included retrospective observational studies as long as they contain clinical characteristics of COVID-19 associated illness. If the patients came from the same hospital with overlapping cases, we only selected the publication containing greatest number of cases. The following publication were excluded: reviews articles, meta-analysis, perspectives, comments, consensus documents, and publications that were in the neither English nor Chinese. Also, publications with highly suspected but not laboratory confirmed cases were excluded.

Literature Quality Evaluation, Data Collection and Statistical Analysis

All included literatures were evaluated using the Newcastle-Ottawa Scale (NOS)¹¹. The quality score of the literature ranged from lowest 0 to highest 9. Total quality score of 0-3, 4-6, and 7-9 indicated poor, fair, and good studies, respectively. Information on baseline demographic data, medical and exposure history, symptoms and signs, underlying comorbidities, laboratory findings, chest computed tomographic (CT) scans and CFR were recorded. Based on the diagnostic gold standard for COVID-19 (positive RT-PCR assay for SARS-CoV-2), we synthesized data on demographic and clinical parameters in an unbiased manner. The proportion of each parameter was calculated by the following formula: (actual patient counts)/ (total patients confirmed using the gold standard) \times 100%. The χ^2 test was used to compare the proportions. Statistical analyses were conducted using SPSS version 18 (IBM SPSS Statistics, IBM Corporation).

Results

General Information on the Systemic Review

A total of 1052 publications were retrieved using the search strategy. Seventy-two retrospective studies (including 22 case report, 20 case series, 3 case-control and 27 cross-sectional studies) that met the inclusion criteria were included in the final analysis (**Figure 1**). Of the selected publications, 51 were written in English while 21 were written in Chinese. The general information on eligible publications can be found in **Table 1**. Ten publications reported COVID-19 cases from outside of China in USA¹², Germany¹³, South Korea¹⁴, Vietnam¹⁵ ¹⁶, Nepal¹⁷, Thailand¹⁸, Singapore¹⁹, Canada²⁰ and Italy²¹. The remaining cases were from China covering 31 provinces or provincial-level municipalities. Additionally, nine reports specifically targeted children and the remaining focused mainly on adult patients (including 2 on pregnant women). Admission time for COVID-19 patients was from December 11, 2019 to February 14, 2020. Quality assessment of the literatures showed that cross-sectional studies achieved a good quality (median score, 7.0) while case report/series were fair (median score, 6.0).

Demographics and epidemiology of Selected Patients

A total of 3,470 COVID-19 patients were included, of which 3,468 confirmed cases were based on the positive SARS-CoV-2 on RT-PCR assay while two cases²⁵ were diagnosed according to coronavirus antibody detections. The age of the COVID-19 patients ranged from 17 days to 92 years old. Male gender accounted for 1822 (52.6%) of the selected patients. Among 1,573 patients who were asked for smoking status, 208 (13.2%) were self-reported smokers. Through a synthesized analysis, a total of 2182 cases (76.0%) had a history of transmission exposures, *i.e.*, the patients were either Wuhan residents or travelled to Wuhan within the past 14 days.

Clinical Characteristics of COVID-19

The most common symptom of COVID-19 was fever (2878 [83.0%]), followed by cough (2102 [61.0%]), fatigue (942 [37.9%]), sputum production (720 [28.7%]), dyspnea (412 [14.5%]), muscle aches (477 [18.6%]). Less common symptoms were headache (318 [11.8%]), sore throat (289 [14.0%]), gastrointestinal symptoms (anorexia, nausea or vomiting account for 185 [8.9%]) and upper airway symptoms (rhinorrhea, sneeze or nasal congestion account for 162 [7.6%]) and diarrhea (165 [6.1%]) (**Figure 2**). Further analysis showed that only 1522 [63.4%] of the patients had fever as their onset symptom.

Of the selected patients, 888 [31.5%] cases co-existed with underlying chronic disorders, such as hypertension [13.3%], diabetes [7.3%], chronic obstructive pulmonary disease (COPD) [1.4%], cardiovascular and cerebrovascular diseases [8.3%], malignancy [1.5%], chronic liver disease [2.1%] and chronic kidney disease [0.7%] (See Table 3 for details). Common complications of COVID-19 included acute respiratory distress syndrome (ARDS) (136 [8.9%]), shock (29 [2.2%]) and acute renal failure (30 [2.1%]).

Radiological findings revealed that 2528 [88.2%] of 2866 cases had abnormal presentations on chest CT (**Figure 3A**), with either bilateral or unilateral ground-glass/consolidative pulmonary opacities. Laboratory blood tests showed that 1498 [62.8%] of 2387 cases had lymphopenia (lymphocyte count $< 1.0 \times 10^9/L$), while 1354 [64.8%] of 2091 cases presented an increased level of C-reactive protein (CRP) (**Figure 3 B-C**).

Other Outcomes

Collectively, a total of 185 [11.5%] patients were admitted to intensive care unit (ICU) while the overall CFR was 3.7% (**Table 2**). Our further analysis showed that COVID-19 patients admitted in Hubei province (Wuhan in particular) suffered from a significant higher ICU admission rate than that outside of Hubei, China (21.9% vs. 2.5%, $p<0.001$). Also, CFR attributed to COVID-19 in Hubei province, China was significantly higher than that in non-Hubei, China (10.4% vs. 0.6%, $p<0.001$).

Discussion

This review analyzed clinical data on COVID-19 patients enrolled retrospectively in published studies. These patients were admitted to hospitals between December 11, 2019 and February 14, 2020, which covered a period from COVID-19 outbreak to its global pandemic. To our knowledge, this updated systematic review analyzed the largest number of cases demonstrating the clinical characteristics of COVID-19, which covers ten countries. As of March 5, 2020, there have been 95,333 confirmed cases distributing over 86 countries⁴. The rapid and wide spreading of the infection has clearly shown the pandemic potential of COVID-19, to which we should pay great attention.

Through literature searching and data extraction, we included 3,470 confirmed cases of COVID-19 based on the positive assays of SARS-CoV-2 on RT-PCR or antibody detection. The present study showed that the infected patients aged from 17-day to 92-year old. A recent report by Chinese Center for Disease Control and Prevention (China CDC) have shown that 86.6% the patients aged 30-79 years⁵. This study together with China CDC report indicated that the general population, regardless of age, is susceptible to SARS-CoV-2 infection. The general ratio of male to female gender of the present study (1.10:1) is also similar to China CDC report (1.06:1), indicating that COVID-19 may not have a gender predisposition. Although 13.2% of the selected patients had a history of smoking, we could not draw the conclusion that smokers are less susceptible to the viral infection than non-smokers, as the patients

included in our analysis were from a sample pool that was not representative the general population by smoking status.

This systematic review showed that most of the patients (76.0%) had a history of Wuhan-related exposures. This is of great importance for early quarantine for the subjects with emerging infectious disease when specific treatments are not available. Actually, we have learned from the SARS outbreak 17 years ago that early identification, early isolation and early management would lead to the stop of viral transmissions from human to human⁷⁹. Collectively, there were 36% of the COVID-19 patients absent from fever as the onset symptom. In this case, such patients may have been ignored at the early stage if we focused heavily on fever examination for initial screening. Our composite analysis showed that fever remains the most common symptom (83.0%) in patients with COVID-19. However, the proportion of fever is somewhat lower than that of other coronavirus related respiratory illness, such as SARS (100%)^{80 81} or middle east respiratory syndrome (MERS) (98%)⁸². Similarly, the accompanied symptoms of dyspnea (14.5%) and diarrhea (6.1%) are relatively less common in patients with COVID-19 than those seen in SARS and MERS⁸⁷. More importantly, this study revealed an overall CFR of 3.7%, which was quite similar to that reported by the WHO official statistics as of March 5, 2020 (CFR 3.7%, 3,015 died of 80,565 cases)⁴. Nevertheless, the CFR of COVID-19 was much lower than that of SARS (9.6%)⁸³ and MERS (37.1%)⁸⁴. By far, the mechanisms underlying the varying symptoms and CFR for these three coronavirus-infected diseases are not fully understood. One reason may be that there were still some COVID-19 patients being treated in hospitals at the time of the manuscripts submitted, so the outcome (death or recovery) is not known yet. Additionally, we suppose that the varied tropism as well as virulence of these three coronaviruses may in part account for the discrepancies, which warrants further investigations.

According to the seven version Guidelines for the Diagnosis and Treatment of Novel

Coronavirus Infection⁸⁵, typical CT findings of early COVID-19 are characterized by multiple small patchy shadows and then developed into bilateral pulmonary ground-glass or consolidative opacities. In our summary, most of the patients (88.2%) had abnormal findings in the lungs with chest CT scan. In some early cases of COVID-19, clear evidence of pneumonia has been shown on HRCT while X-ray radiographic findings are still normal⁵¹. Thus, chest CT scan should be routinely recommended for the early identification of COVID-19. Routine blood tests showed that 62.8% of COVID-19 patients had lymphopenia, of which the level is relatively lower than that of SARS⁸⁶. Similarly, a large proportion (64.8%) of COVID-19 patients had an increase level of CRP. Taken together, a combination of the epidemiologic history with auxiliary examinations, *e.g.*, chest CT scan and blood tests, will improve the diagnostic accuracy for COVID-19.

Our further analysis revealed that patients admitted in Hubei province (Wuhan in particular) are facing much more severe situations (higher ICU admission rate and CFR) than those diagnosed in other parts of China. Reasons for the tough situations being caught in Hubei province might be as follows. Firstly, the human-to-human transmission of COVID-19 had not been cutting down at its early stage in Wuhan, Hubei province. Second, when encountering such a large number of infected patients, a limited healthcare workforce in Wuhan could not support to treat all patients at their mild or moderate stage. This might result in a higher rate of ICU admission or CFR. Since substantial number of patients as well as healthy residents have been kept in lockdown of Wuhan, great efforts are urgently needed to cutdown the virus transmission from COVID-19 patients to local healthy residents.

This systematic review has some limitations. First, due to the retrospective nature of selected literatures, not all clinical characteristics have been well documented. This have resulted in an inconsistency of the total numbers of each item being calculated. Second, some of the selected patients may not have discharged before the studies were finalized. This might have affected the clinical outcomes of COVID-19 to some

extents. Third, since the disease is still ongoing, newly published data on COVID-19 might not be included at the time of manuscript submission. Nevertheless, we have summarized the largest number of patients demonstrating the clinical characteristics of COVID-19 in the present study. Finally, we could not determine the incubation periods of COVID-19 due to heterogeneity across studies in reporting the timeline of cases.

In summary, COVID-19 represents an emerging acute respiratory infection with various clinical presentations that share similarities as well as discrepancies with SARS and MERS. Combining clinical presentations with radiographic findings as well as blood tests may add value in early diagnosis and managements. Dynamic changes of clinical features in the course of COVID-19 are needed to be characterized in future studies. Since specific treatments are not available at the moment, urgent efforts should be taken to explore for this emerging disease.

Acknowledgement: We would like to thank Prof. Junfeng (Jim) Zhang from Duke University and Dr. Mei Jiang from Guangzhou Institute of Respiratory Health for their kind help in refining the manuscript.

Contributors: ZF and FY contributed equally to this work. ZF, FY, and KW undertook the review. All authors contributed to the conception of the work and interpretation of the findings. ZF, FY, and ZGL drafted the manuscript. All authors read the manuscript and approved the final version. NSZ and ZGL acts as guarantor. The corresponding author attests that all listed authors meet authorship criteria and those did not meet the criteria have been omitted.

Funding: This systematic review presents independent research supported by the Shenzhen Science and Technology Peacock Team Project (Grant No. KQTD20170331145453160) and Shenzhen Nanshan District Pioneer Group Research Funds (Grant No. LHFD20180007)

Competing interests:

All authors have no potential conflicts of interest to declare.

Ethical approval: Not required.

References

1. Wuhan Municipal Health Commission. Report of clustering pneumonia of unknown etiology in Wuhan City. Published December 31, 2019. <http://wjw.wuhan.gov.cn/front/web/showDetail/2019123108989> Last accessed: March 05, 2020
2. WHO. Coronavirus disease (COVID-2019) situation reports. <https://www.who.int/emergencies/diseases/novel-coronavirus-2019/situation-reports>
3. Gorbalenya, AE, Baker, SC, Baric, RS. et al. The species Severe acute respiratory syndrome-related coronavirus: classifying 2019-nCoV and naming it SARS-CoV-2. *Nat Microbiol* 2020. doi: 10.1038/s41564-020-0695-z
4. WHO. Coronavirus disease (COVID-2019) situation reports. https://www.who.int/docs/default-source/coronaviruse/situation-reports/20200305-sitrep-45-covid-19.pdf?sfvrsn=ed2ba78b_2 Last accessed: March 05, 2020
5. Wu Z, McGoogan JM. Characteristics of and Important Lessons From the Coronavirus Disease 2019 (COVID-19) Outbreak in China: Summary of a Report of 72314 Cases From the Chinese Center for Disease Control and Prevention. *JAMA* 2020. doi: 10.1001/jama.2020.2648
6. Huang C, Wang Y, Li X, et al. Clinical features of patients infected with 2019 novel coronavirus in Wuhan, China. *Lancet* 2020;395(10223):497-506. doi: 10.1016/S0140-6736(20)30183-5
7. Chen N, Zhou M, Dong X, et al. Epidemiological and clinical characteristics of 99 cases of 2019 novel coronavirus pneumonia in Wuhan, China: a descriptive study. *Lancet* 2020;395(10223):507-513. doi: 10.1016/S0140-6736(20)30211-7
8. Wang D, Hu B, Hu C, et al. Clinical Characteristics of 138 Hospitalized Patients With 2019 Novel Coronavirus-Infected Pneumonia in Wuhan, China. *JAMA* 2020 doi: 10.1001/jama.2020.1585
9. Xu XW, Wu XX, Jiang XG, et al. Clinical findings in a group of patients infected with the 2019 novel coronavirus (SARS-Cov-2) outside of Wuhan, China: retrospective case series. *BMJ* 2020:m606. doi: 10.1136/bmj.m606
10. Guan WJ, Ni ZY, Hu Y, et al. Clinical Characteristics of Coronavirus Disease

2019 in China. *N Engl J Med* 2020. doi: 10.1056/NEJMoa2002032

11. Stang A. Critical evaluation of the Newcastle-Ottawa scale for the assessment of the quality of nonrandomized studies in meta-analyses. *Eur J Epidemiol* 2010;25(9):603-05.

12. Holshue ML, DeBolt C, Lindquist S, et al. First Case of 2019 Novel Coronavirus in the United States. *N Engl J Med* 2020 doi: 10.1056/NEJMoa2001191

13. Rothe C, Schunk M, Sothmann P, et al. Transmission of 2019-nCoV Infection from an Asymptomatic Contact in Germany. *N Engl J Med* 2020 doi: 10.1056/NEJMc2001468

14. Kim JY, Choe PG, Oh Y, et al. The First Case of 2019 Novel Coronavirus Pneumonia Imported into Korea from Wuhan, China: Implication for Infection Prevention and Control Measures. *J Korean Med Sci* 2020;35(5):e61. doi: 10.3346/jkms.2020.35.e61

15. Van Cuong L, Giang HTN, Linh LK, et al. The first Vietnamese case of COVID-19 acquired from China. *Lancet Infect Dis* 2020. doi: 10.1016/s1473-3099(20)30111-0

16. Phan LT, Nguyen TV, Luong QC, et al. Importation and Human-to-Human Transmission of a Novel Coronavirus in Vietnam. *N Engl J Med* 2020. doi: 10.1056/NEJMc2001272

17. Bastola A, Sah R, Rodriguez-Morales AJ, et al. The first 2019 novel coronavirus case in Nepal. *Lancet Infect Dis* 2020. doi: 10.1016/S1473-3099(20)30067-0

18. Pongpirul WA, Pongpirul K, Ratnarathon AC, et al. Journey of a Thai Taxi Driver and Novel Coronavirus. *N Engl J Med* 2020. doi: 10.1056/NEJMc2001621

19. Kam KQ, Yung CF, Cui L, et al. A Well Infant with Coronavirus Disease 2019 (COVID-19) with High Viral Load. *Clin Infect Dis* 2020. doi: 10.1093/cid/ciaa201

20. Silverstein WK, Stroud L, Cleghorn GE, et al. First imported case of 2019 novel coronavirus in Canada, presenting as mild pneumonia. *Lancet* 2020;395(10225):734. doi: 10.1016/S0140-6736(20)30370-6

21. Albarello F, Pianura E, Di Stefano F, et al. 2019-novel Coronavirus severe adult respiratory distress syndrome in two cases in Italy: An uncommon radiological

- presentation. *Int J Infect Dis* 2020. doi: 10.1016/j.ijid.2020.02.043
22. Chen F, Liu Z, Zhang F, et al. First case of severe childhood novel coronavirus pneumonia in China. *Chin J Pediatr* 2020(00):E005-E005. doi:10.3760/cma.j.issn.0578-1310.2020.0005. Article in Chinese.
23. Huang P, Liu T, Huang L, et al. Use of Chest CT in Combination with Negative RT-PCR Assay for the 2019 Novel Coronavirus but High Clinical Suspicion. *Radiology* 2020:200330. doi: 10.1148/radiol.2020200330
24. Cai J, Wang X, Ge Y, et al. First case of 2019 novel coronavirus infection in children in Shanghai. *Chin J Pediatr* 2020; E002-E002. doi: 10.3760/cma.j.issn.0578-1310.2020.0002. Article in Chinese.
25. Zhang Z, Li X, Zhang W, et al. Clinical Features and Treatment of 2019-nCov Pneumonia Patients in Wuhan: Report of A Couple Cases. *Virol Sin* 2020. doi: 10.1007/s12250-020-00203-8
26. Lin X, Gong Z, Xiao Z, et al. Novel Coronavirus Pneumonia Outbreak in 2019: Computed Tomographic Findings in Two Cases. *Korean J Radiol* 2020;21(3):365-68. doi: 10.3348/kjr.2020.0078
27. Fang Y, Zhang H, Xu Y, et al. CT Manifestations of Two Cases of 2019 Novel Coronavirus (2019-nCoV) Pneumonia. *Radiology* 2020:200280. doi: 10.1148/radiol.2020200280
28. Deng H, Zhang Y, Wang Y. Two cases of 2019 novel coronavirus infection in children. *Chin Crit Care Med* 2020(00):E001-E001. Article in Chinese.
29. Yang Z, Li G, Dai X, et al. Three cases of novel coronavirus pneumonia with viral nucleic acids still positive in stool after throat swab detection turned negative. *Chin J Dig* 2020(00):E002-E002. Article in Chinese.
30. Wang Z, Chen X, Lu Y, et al. Clinical characteristics and therapeutic procedure for four cases with 2019 novel coronavirus pneumonia receiving combined Chinese and Western medicine treatment. *Biosci Trends* 2020 doi: 10.5582/bst.2020.01030
31. Zeng LK, Tao XW, Yuan WH et al. First case of neonate infected with novel coronavirus pneumonia in China. *Chin J Pediatr* 2020(00):E009-E009. doi: 10.3760/cma.j.issn.0578-1310.2020.0009. Article in Chinese.

32. Xu X, Yu C, Zhang L, et al. Imaging features of 2019 novel coronavirus pneumonia. *Eur J Nucl Med Mol Imaging* 2020 doi: 10.1007/s00259-020-04720-2
33. Li MD, Xu M, Zhan WQ, et al. Report of the first cases of mother and infant infections with 2019 novel coronavirus in Xinyang City Henan Province. *Chin J Infect Dis* 2020(00):E007-E007. DOI: 10.3760/cma.j.issn.1000-6680.2020.0007. Article in Chinese.
34. Xie X, Zhong Z, Zhao W, et al. Chest CT for Typical 2019-nCoV Pneumonia: Relationship to Negative RT-PCR Testing. *Radiology* 2020:200343. doi: 10.1148/radiol.2020200343
35. Huang WH, Teng LC, Yeh TK, et al. 2019 novel coronavirus disease (COVID-19) in Taiwan: Reports of two cases from Wuhan, China. *J Microbiol Immunol Infect* 2020 doi: 10.1016/j.jmii.2020.02.009
36. Yu P, Zhu J, Zhang Z, et al. A familial cluster of infection associated with the 2019 novel coronavirus indicating potential person-to-person transmission during the incubation period. *J Infect Dis* 2020. doi: 10.1093/infdis/jiaa077
37. Pan X, Chen D, Xia Y, et al. Asymptomatic cases in a family cluster with SARS-CoV-2 infection. *Lancet Infect Dis* 2020. doi: 10.1016/s1473-3099(20)30114-6
38. Hao W. Clinical Features of Atypical 2019 Novel Coronavirus Pneumonia with an initially Negative RT-PCR Assay. *J Infect* 2020. doi: 10.1016/j.jinf.2020.02.008
39. Wei J, Xu H, Xiong J, et al. 2019 Novel Coronavirus (COVID-19) Pneumonia: Serial Computed Tomography Findings. *Korean J Radiol* 2020. doi: 10.3348/kjr.2020.0112
40. Hao W, Li M, Huang X. First Atypical case of 2019 novel coronavirus in Yan'an, China. *Clin Microbiol Infect* 2020. doi: 10.1016/j.cmi.2020.02.011
41. Xu Z, Shi L, Wang Y, et al. Pathological findings of COVID-19 associated with acute respiratory distress syndrome. *Lancet Respir Med* 2020. doi: 10.1016/S2213-2600(20)30076-X
42. Lei J, Li J, Li X, et al. CT Imaging of the 2019 Novel Coronavirus (2019-nCoV) Pneumonia. *Radiology* 2020:200236. doi: 10.1148/radiol.2020200236
43. Liu P, Tan XZ. 2019 Novel Coronavirus (2019-nCoV) Pneumonia. *Radiology*

2020:200257. doi: 10.1148/radiol.2020200257

44. Ruan ZR, Gong P, Han W, et al. A case of pneumonia in a 2019 novel coronavirus infected patient with twice-negative 2019-nCoV nucleic acid testing results within 8 days after onset. *Chin Med J (Engl)* 2020;133(00):E016-E016. doi: 10.3760/cma.j.issn.0366-6999.2020.0016

45. Chan JF, Yuan S, Kok KH, et al. A familial cluster of pneumonia associated with the 2019 novel coronavirus indicating person-to-person transmission: a study of a family cluster. *Lancet* 2020;395(10223):514-23. doi: 10.1016/s0140-6736(20)30154-9

46. Chen H, Guo J, Wang C, et al. Clinical characteristics and intrauterine vertical transmission potential of COVID-19 infection in nine pregnant women: a retrospective review of medical records. *Lancet* 2020. doi: 10.1016/S0140-6736(20)30360-3

47. Wei M, Yuan J, Liu Y, et al. Novel Coronavirus Infection in Hospitalized Infants under 1 Year of Age in China. *JAMA* 2020. doi: 10.1001/jama.2020.2131

48. Bai SL, Wang JY, Zhou YQ, et al. Analysis of the first cluster of cases in a family of novel coronavirus pneumonia in Gansu Province. *Chin J Preventive Med* 2020;54(04):E005-E005. DOI: 10.3760/cma.j.cn112150-20200204-00065. Article in Chinese.

49. Cai J, Xu J, Lin D, et al. A Case Series of children with 2019 novel coronavirus infection: clinical and epidemiological features. *Clin Infect Dis* 2020. doi: 10.1093/cid/ciaa198

50. Gao T, He X, Su H, et al. Clinical characteristics of 11 cases of new coronavirus pneumonia. *Chin J Clin Infect Dis* 2020(00):E001-E001. Article in Chinese.

51. Zhang MQ, Wang XH, Chen YL, et al. Clinical features of 2019 novel coronavirus pneumonia in the early stage from a fever clinic in Beijing. *Chin J Tuberc Respir Dis* 2020;43(0):E013. doi: 10.3760/cma.j.issn.1001-0939.2020.0013. Article in Chinese.

52. Feng K, Yun YX, Wang XF, et al. Analysis of CT features of 15 Children with 2019 novel coronavirus infection. *Chin J Pediatr* 2020;58:E007. doi: 10.3760/cma.j.issn.0578-1310.2020.0007. Article in Chinese.

53. Chang, Lin M, Wei L, et al. Epidemiologic and Clinical Characteristics of Novel

Coronavirus Infections Involving 13 Patients Outside Wuhan, China. *JAMA* 2020. doi: 10.1001/jama.2020.1623

54. Li Y, Xu S, Du T, et al. Clinical features of 2019 novel coronavirus infection patients and a feasible screening procedure. *Chin J Emerg Med* 2020(00):E007-E007. Article in Chinese.

55. Yang T, Yu X, He X, et al. Early clinical manifestations and pulmonary imaging analysis of patients with Novel coronavirus pneumonia. *Chin J Emerg Med* 2020(00):E005-E005. Article in Chinese.

56. Li YY, Wang WN, Lei Y, et al. Comparison of the clinical characteristics between RNA positive and negative patients clinically diagnosed with 2019 novel coronavirus pneumonia. *Chin J Tuberc Respir Dis* 2020(00):E023-E23. doi: 10.3760/cma.j.cn112147-20200214-00095. Article in Chinese.

57. Chung M, Bernheim A, Mei X, et al. CT imaging features of 2019 novel coronavirus (2019-nCoV). *Radiology* 2020:200230. doi: 10.1148/radiol.2020200230.

58. Chen L, Liu H, Liu W, et al. Analysis of clinical features of 29 patients with 2019 novel coronavirus pneumonia. *Chin J Tuberc Respir Dis* 2020(00):E005-E005. doi: 10.3760/cma.j.issn.1001-0939.2020.0005. Article in Chinese.

59. Song F, Shi N, Shan F, et al. Emerging Coronavirus 2019-nCoV Pneumonia. *Radiology* 2020:200274. doi: 10.1148/radiol.2020200274

60. Huang L, Han R, Yu PX et al. A correlation study of CT and clinical features of different clinical types of 2019 novel coronavirus pneumonia. *Chin J Radiology* 2020(00):E003-E003. doi:10.3760/cma.j.issn.1005-1201.2020.0003. Article in Chinese.

61. Kui L, Fang YY, Deng Y, et al. Clinical characteristics of novel coronavirus cases in tertiary hospitals in Hubei Province. *Chin Med J (Engl)* 2020. doi: 10.1097/CM9.0000000000000744.

62. Zhao R, Liang YG, Lin YR, et al. Clinical characteristics of 28 patients with novel coronavirus pneumonia. *Chin J Infectious Dis* 2020(00):E006-E006. doi: 10.3760/cma.j.issn.1000-6680.2020.0006. Article in Chinese.

63. Xu M, Li MD, Zhan WQ, et al. Clinical analysis of 23 cases of 2019 novel

coronavirus infection in Xinyang City, Henan Province. *Chin Crit Care Med* 2020(02):E010-E010. doi: 10.3760/cma.j.issn.2095-4352.2020.02.000. Article in Chinese.

64. Shi H, Han X, Jiang N, et al. Radiological findings from 81 patients with COVID-19 pneumonia in Wuhan, China: a descriptive study. *Lancet Infect Dis* 2020. doi: 10.1016/s1473-3099(20)30086-4

65. Wu J, Liu J, Zhao X, et al. Clinical Characteristics of Imported Cases of COVID-19 in Jiangsu Province: A Multicenter Descriptive Study. *Clin Infect Dis* 2020. doi: 10.1093/cid/ciaa199

66. Xu X, Yu C, Qu J, et al. Imaging and clinical features of patients with 2019 novel coronavirus SARS-CoV-2. *Eur J Nucl Med Mol Imaging* 2020. doi: 10.1007/s00259-020-04735-9

67. Yang W, Cao Q, Qin L, et al. Clinical characteristics and imaging manifestations of the 2019 novel coronavirus disease (COVID-19): A multi-center study in Wenzhou city, Zhejiang, China. *J Infect* 2020. doi: 10.1016/j.jinf.2020.02.016

68. Wu J, Wu X, Zeng W, et al. Chest CT Findings in Patients with Corona Virus Disease 2019 and its Relationship with Clinical Features. *Invest Radiol* 2020. doi: 10.1097/rli.0000000000000670

69. Zhang JJ, Dong X, Cao YY, et al. Clinical characteristics of 140 patients infected by SARS-CoV-2 in Wuhan, China. *Allergy* 2020. doi: 10.1111/all.14238

70. Yang X, Yu Y, Xu J, et al. Clinical course and outcomes of critically ill patients with SARS-CoV-2 pneumonia in Wuhan, China: a single-centered, retrospective, observational study. *Lancet Respir Med* 2020. doi: 10.1016/s2213-2600(20)30079-5

71. Xu YH, Dong JH, An WM, et al. Clinical and computed tomographic imaging features of Novel Coronavirus Pneumonia caused by SARS-CoV-2. *J Infect* 2020. doi: 10.1016/j.jinf.2020.02.017

72. Liu RR, Zhu Y, Wu MY, et al. CT imaging analysis of 33 cases with the 2019 Novel coronavirus infection. *Chin Med J* 2020(00):E011-E11. doi:10.3760/cma.j.issn.0376-2491.2020.13.0. Article in Chinese.

73. Bernheim A, Mei X, Huang M, et al. Chest CT Findings in Coronavirus

Disease-19 (COVID-19): Relationship to Duration of Infection. *Radiology* 2020;200:463. doi: 10.1148/radiol.2020200463

74. Tian S, Hu N, Lou J, et al. Characteristics of COVID-19 infection in Beijing. *J Infect* 2020. doi: 10.1016/j.jinf.2020.02.018

75. Liu W, Tao ZW, Lei W, et al. Analysis of factors associated with disease outcomes in hospitalized patients with 2019 novel coronavirus disease. *Chin Med J (Engl)* 2020(00):E010-E10. doi: 10.1097/CM9.0000000000000775

76. Wan Q, Shi AQ, He T, et al. Analysis of clinical features of 153 patients with novel coronavirus pneumonia in Chongqing. *Chin J Clin Infect Dis* 2020(00):E008-E08. doi: 10.3760/cma.j.cn 115673-20200212-00030. Article in Chinese.

77. Wen K, Li WG, Zhang DW, et al. Epidemiological and clinical characteristics of 46 newly-admitted coronavirus disease 2019 cases in Beijing. *Chin J Infect Dis* 2020(00):E011-E11. doi:10.3760/cma.j.cn311365-20200219-00086. Article in Chinese.

78. Liu C, Jiang ZC, Shao CX, et al. Preliminary study of the relationship between novel coronavirus pneumonia and liver function damage: a multicenter study *Chin J Hepatol* 2020(02):148-52. doi: 10.3760/cma.j.issn.1007-3418.2020.02.000. Article in Chinese.

79. Zhong NS, Zeng GQ. What we have learnt from SARS epidemics in China. *BMJ* 2006;333(7564):389-91. doi: 10.1136/bmj.333.7564.389

80. Hsu LY, Lee CC, Green JA, et al. Severe acute respiratory syndrome (SARS) in Singapore: clinical features of index patient and initial contacts. *Emerg Infect Dis* 2003;9(6):713. doi: 10.3201/eid0906.030264

81. Lee N, Hui D, Wu A, et al. A major outbreak of severe acute respiratory syndrome in Hong Kong. *N Engl J Med* 2003;348(20):1986-94. doi: 10.1056/NEJMoa030685

82. Assiri A, Al-Tawfiq JA, Al-Rabeeh AA, et al. Epidemiological, demographic, and clinical characteristics of 47 cases of Middle East respiratory syndrome coronavirus disease from Saudi Arabia: a descriptive study. *Lancet Infect Dis* 2013;13(9):752-61. doi:10.1016/S1473-3099(13)70204-4

83. WHO. Summary of probable SARS cases with onset of illness from 1 November 2002 to 31 July 2003. https://www.who.int/csr/sars/country/table2004_04_21/en/ Last accessed: March 05, 2020
84. WHO. MERS Monthly Report November 2019. <https://www.who.int/emergencies/mers-cov/en/> Last accessed: March 05, 2020
85. Guidelines for the Diagnosis and Treatment of Novel Coronavirus (2019-nCoV) Infection by the National Health Commission (Trial Version 7). Available at: http://www.gov.cn/zhengce/zhengceku/2020-03/04/content_5486705.htm
86. Wong RSM, Wu A, To KF, et al. Haematological manifestations in patients with severe acute respiratory syndrome: retrospective analysis. *BMJ* 2003;326(7403):1358-1362. doi: 10.1136/bmj.326.7403.1358
87. Wang C, Horby PW, Hayden FG, et al. A novel coronavirus outbreak of global health concern. *Lancet* 2020;395(10223):470-473. doi: 10.1016/S0140-6736(20)30185-9

Table 1. General information of the identified literatures.

Reference	Time for Enrollment (Y/M/D)	Country/Region	Study type	Target population	N	Quality score
Holshue et al. ¹²	2020.01.19	Snohomish, USA	Case report	Adult	1	6
Rothe et al. ¹³	2020.01.24	Munich, Germany	Case report	Adult	1	5
Kim et al. ¹⁴	2020.01.19	Incheon, Korea	Case report	Adult	1	5
Cuong et al. ¹⁵	2020.01.23	Thanh Hoa, Vietnam	Case report	Adult	1	5
Phan et al. ¹⁶	2020.01.22	Ho Chi Minh, Vietnam	Case report	Adult	1	6
Bastola et al. ¹⁷	2020.01.13	Kathmandu, Nepal	Case report	Adult	1	6
Pongpirul et al. ¹⁸	2020.01.20	Bangkok, Thailand	Case report	Adult	1	6
Kam et al. ¹⁹	2020.02.04	Singapore	Case report	Children (Infant)	1	5
Silverstein et al. ²⁰	NA	Toronto, Canada,	Case report	Adult	1	6
Albarello et al. ²¹	2020.01.29	Rome, Italy	Case series	Adult	2	7
Chen et al. ²²	2020.01.27	Hubei, China	Case report	Children	1	5
Huang et al. ²³	NA	Guangdong, China	Case report	Adult	1	4
Cai et al. ²⁴	2020.01.19	Shanghai, China	Case report	Children	1	5
Zhang et al. ²⁵	2019.12.27-2019.12.30	Hubei, China	Case series	Adult	2	7
Lin et al. ²⁶	NA	Jiangxi, China	Case series	Adult	2	5
Fang et al. ²⁷	NA	Zhejiang, China	Case series	Adult	2	4
Deng et al. ²⁸	2020.01.22-2020.01.31	Shanxi, China	Case series	Children	2	4
Yang et al. ²⁹	2020.01.25-2020.02.11	Guangdong, China	Case series	Adult	3	7
Wang et al. ³⁰	2020.01.21-2020.01.24	Shanghai, China	Case series	Adult	4	7
Zeng et al. ³¹	2020.02.05	Hubei, China	Case report	Children (Infant)	1	4
Xu et al. ³²	NA	Guangdong, China	Case report	Adult	1	4
Li et al. ³³	2020.01.29	Henan, China	Case report	Adult (pregnant)	1	6
Xie et al. ³⁴	NA	Hunan, China	Case series	Adult	5	6

Huang et al. ³⁵	2020.01	Taiwan	Case series	Adult	2	7
Yu et al. ³⁶	2020.01.21	Shanghai, China	Case series	Adult	4	6
Pan et al. ³⁷	2020.01.27	Guangdong, China	Case series	Adult/children	3	6
Hao et al. ³⁸	NA	Shanxi, China	Case report	Adult	1	4
Wei et al. ³⁹	NA	Jiangxi, China	Case report	Adult	1	6
Hao et al. ⁴⁰	NA	Shanxi, China	Case report	Adult	1	4
Xu et al. ⁴¹	2020.01.21	Beijing, China	Case report	Adult	1	6
Lei et al. ⁴²	2020.01	Gansu, China	Case report	Adult	1	4
Liu et al. ⁴³	2020.01	Hunan, China	Case report	Adult	1	4
Ruan et al. ⁴⁴	2020.01.20	Guangdong, China	Case report	Adult	1	4
Chan et al. ⁴⁵	2020.01.10-2020.01.15	Guangdong, China	Case series	Adult/children	6	6
Chen et al. ⁴⁶	2020.01.20-2020.01.31	Hubei, China	Case series	Adult (pregnant)	9	6
Wei et al. ⁴⁷	2019.12.08-2020.02.06	7 provinces [*] , China	Case series	Children	9	6
Bai et al. ⁴⁸	2020.02	Gansu, China	Case series	Adult	7	6
Cai et al. ⁴⁹	2020.01.19-2020.02.03	4 provinces [§] , China	Case series	Children	10	6
Gao et al. ⁵⁰	2020.01.21-2020.02.4	Shanxi, China	Case series	Adult	11	8
Zhang et al. ⁵¹	2020.01.18-2020.02.03	Beijing, China	Case series	Adult/children	9	6
Feng et al. ⁵²	2019.01.16-2020.02.06	Guangdong, China	Case series	Children	15	6
Chang et al. ⁵³	2020.01.16-2020.01.29	Beijing, China	Case series	Adult	13	7
Li et al. ⁵⁴	2020.01.19-2020.01.26	Beijing, China	Case-control	Adult	9	7
Yang et al. ⁵⁵	2020.01.01-2020.02.03	Shanghai, China	Case-control	Adult	10	7
Li et al. ⁵⁶	2020.01-2020.02	Hubei, China	Case-control	Adult	31	7
Chung et al. ⁵⁷	2020.01.18-2020.01.27	3 provinces [#] , China	Cross-sectional	Adult	21	5
Chen et al. ⁵⁸	2020.01.14-2020.01.29	Hubei, China	Cross-sectional	Adult	29	7
Huang et al. ⁶	2019.12.16-2020.01.02	Hubei, China	Cross-sectional	Adult	41	8
Song et al. ⁵⁹	2020.01.20-2020.01.27	Shanghai, China	Cross-sectional	Adult	51	7

Chen et al. ⁷	2020.01.01-2020.01.20	Hubei, China	Cross-sectional	Adult	99	8
Huang et al. ⁶⁰	2020.01-NA	Hubei, China	Cross-sectional	Adult	103	6
Kui et al. ⁶¹	2019.12.30-2020.01.24	Hubei, China	Cross-sectional	Adult	137	6
Wang et al. ⁸	2020.01.01-2020.01.28	Hubei, China	Cross-sectional	Adult	138	8
Zhao et al. ⁶²	2020.01.22-2020.02.05	Guangxi, China	Cross-sectional	Adult/children	28	8
Xu et al. ⁶³	2020.01.22-2020.01.29	Henan, China	Cross-sectional	Adult	23	6
Xu et al. ⁹	2020.01.10-2020.01.26	Zhejiang, China	Cross-sectional	Adult/children	62	8
Shi et al. ⁶⁴	2019.12.20-2020.01.23	Hubei, China	Cross-sectional	Adult	81	8
Wu et al. ⁶⁵	2020.01.22-2020.02.14	Jiangsu, China	Cross-sectional	Adult	80	7
Xu et al. ⁶⁶	2020.01.23-2020.02.04	Guangdong, China	Cross-sectional	Adult	90	7
Yang et al. ⁶⁷	2020.01.17-2020.02.10	Zhejiang, China	Cross-sectional	Adult	149	6
Wu et al. ⁶⁸	2020.01-2020.02	Chongqing, China	Cross-sectional	Adult	80	5
Zhang et al. ⁶⁹	2020.01.16-2020.02.03	Hubei, China	Cross-sectional	Adult	140	6
Yang et al. ⁷⁰	2019.12-2020.01.26	Hubei, China	Cross-sectional	Adult	52	8
Xu et al. ⁷¹	2020.01-2020.02	Beijing, China	Cross-sectional	Children	50	8
Liu et al. ⁷²	2020.01.13-2020.01.31	Jiangsu, China	Cross-sectional	Adult	33	8
Bernheim et al. ⁷³	2020.01.18-2020.02.02	4 provinces [‡] , China	Cross-sectional	Adult	121	6
Tian et al. ⁷⁴	NA-2020.02.10	Beijing, China	Cross-sectional	Adult	262	8
Liu et al. ⁷⁵	2019.12.30-2020.01.15	Hubei, China	Cross-sectional	Adult	78	6
Wan et al. ⁷⁶	2020.01.26-2020.02.05	Chongqing, China	Cross-sectional	Adult/children	153	6
Wen et al. ⁷⁷	2020.01.20-2020.02.08	Beijing, China	Cross-sectional	Adult/children	46	6
Liu et al. ⁷⁸	2020.01.23-2020.02.08	7 provinces [‡] , China	Cross-sectional	Adult	32	6
Guan et al. ¹⁰	2019.12.11-2020.01.29	30 provinces [¶] , China	Cross-sectional	Adult/children	1099	8

NA: not available; *, including Beijing, Hainan, Guangdong, Anhui, Shanghai, Guizhou and Zhejiang; §, including Shanghai, Shandong, Hainan, Anhui; #, including Guangdong, Shanghai and Jiangxi; ‡, including Guangdong, Jiangxi, Sichuan and Guangxi; &, including Gansu, Zhejiang, Jiangsu, Hebei, Liaoning, Shanxi and Guangdong; ¶, including all provinces or provincial municipalities except Hong Kong, Macau and Tibet.

Table 2: Summary of the demographics and clinical characteristics of patients with COVID-19.

Demographics	
Total number of cases	3470
Male%	1822/3467, 52.6%
Age (range)	17-day to 92-year
Smokers% [#]	208/1573, 13.2%
Transmission exposures% [*]	2182/2873, 76.0%
Coexisting underlying disorders (888/2818, 31.5%)	
Diabetes	206/2818, 7.3%
Hypertension	376/2818, 13.3%
Cardiovascular and cerebrovascular diseases	233/2818, 8.3%
Chronic obstructive pulmonary disease (COPD)	40/2818, 1.4%
Chronic liver diseases	58/2818, 2.0%
Chronic renal diseases	20/2818, 0.71%
Malignancy	43/2818, 1.5%
Digestive system disease	32/2818, 1.1%
Other chronic diseases [§]	148/2818, 5.3%
Complications	
ARDS	136/1526, (8.9%)
Shock	29/1347, (2.2%)
Acute renal failure	30/1399, (2.1%)
ICU admission	185/1612, (11.5%)
Case fatality	100/2682, (3.7%)

Notes: #, current smokers and ex-smokers; *, being Wuhan residents or ever travelled to Wuhan within 14 days; §, Including thyroid disorders, HIV, endocrine system disease, nervous system disease, etc.

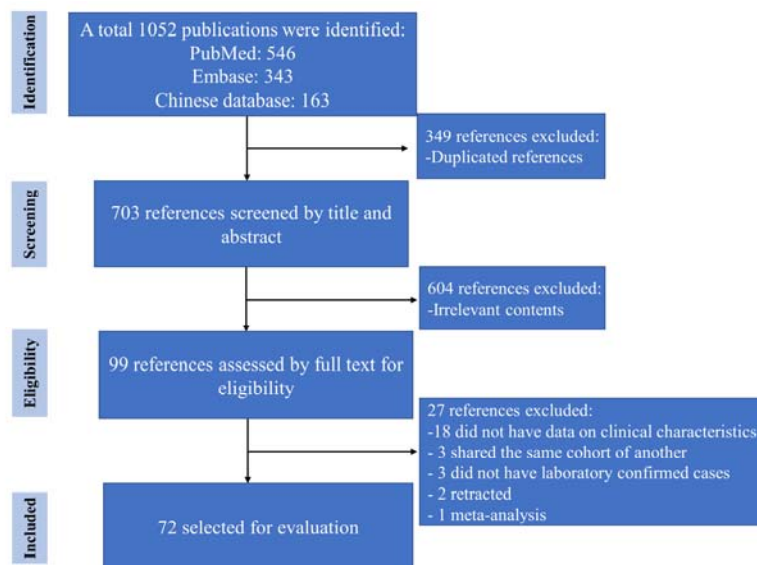


Figure 1 PRISMA flow chart of literature searching and selection.

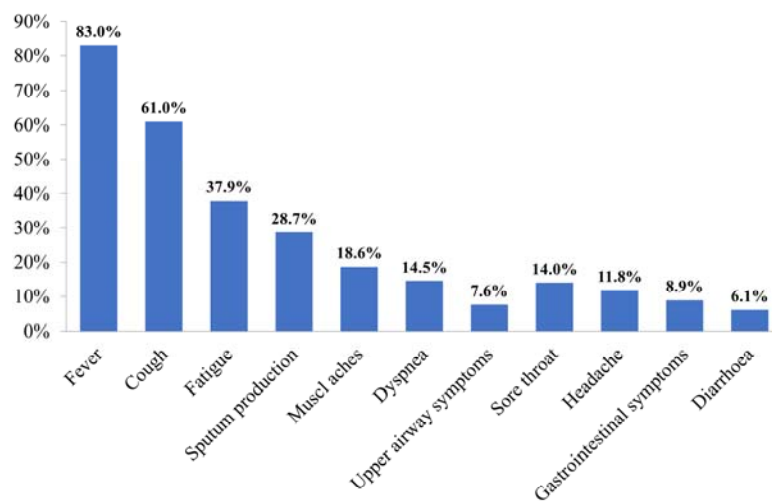


Figure 2: Clinical symptoms of patients with COVID-19

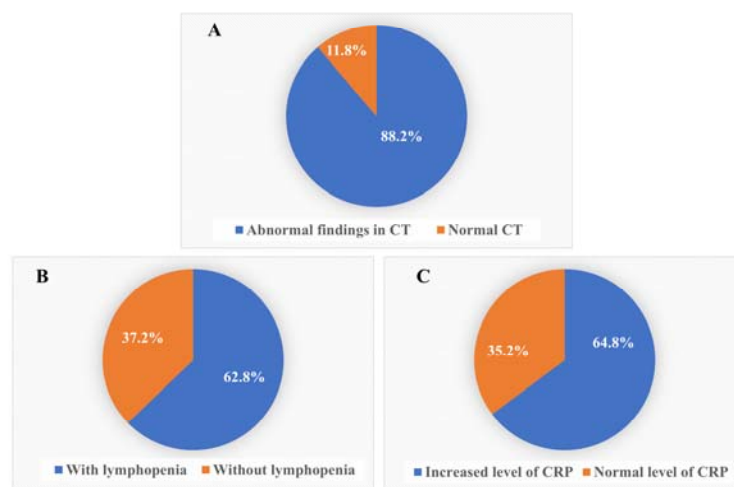


Figure 3: Findings of radiography (A) and laboratory blood tests (B, C) in patients with COVID-19