

Clinical characteristics of 101 COVID-19 nonsurvivors in Wuhan, China: a retrospective study

Qiao Shi^{1*}, Kailiang Zhao^{1*}, Jia Yu^{1*}, Fang Jiang^{2*}, Jiarui Feng¹, Kaiping Zhao³,
Xiaoyi Zhang⁴, Xiaoyan Chen¹, Peng Hu⁵, Yupu Hong¹, Man Li¹, Fang Liu⁶, Chen
Chen^{1#}, Weixing Wang^{1#}

1. Department of General Surgery, Renmin Hospital of Wuhan University, Wuhan,
China

2. Department of Anesthesiology, Li Ka Shing Faculty of Medicine, The University of
Hong Kong, Hong Kong SAR, China

3. Department of Medical Record Management and Statistics, Beijing Jishuitan
Hospital, Beijing, China

4. Department of Critical Care Medicine, Zhongnan Hospital of Wuhan University,
Wuhan, China

5. Department of Emergency, Renmin Hospital of Wuhan University, Wuhan, China

6. Department of Radiology, Renmin Hospital of Wuhan University, Wuhan, China

Correspondence to C Chen, appreciation@whu.edu.cn and W Wang,
sate.llite@163.com.

* Q Shi, K Zhao, J Yu and F Jiang contributed equally to this work.

Joint corresponding authors

Running title: COVID-19 nonsurvivors in Wuhan

Key words: COVID-19; Death; nonsurvivor; Organ dysfunction

NOTICE: This preprint reports new research that has not been certified by peer review and should not be used to guide clinical practice.

Background The outbreak of COVID-19 has aroused global concerns. Few studies focused on characteristics of COVID-19 nonsurvivors.

Objective In this study, we aimed to describe the clinical characteristics of 101 nonsurvivors with COVID-19 and analyze risk factors associated with the rapid disease progress to death after admission.

Design Retrospective study using electronic medical records.

Participants 101 hospitalized patients with confirmed COVID-19 died in Renmin Hospital of Wuhan University before February 15, 2020, were included in this study.

Main measures We obtained epidemiological, demographic, clinical, laboratory, and outcome data from electronic medical records. Univariate logistic regression analyses were performed to evaluate risk factors associated with rapid disease progress to death after admission.

Key results Among included nonsurvivors, the median age was 71.0 years (IQR, 59.0-80.0), 60 (59.4%) were men. Eighty-two (79.2%) had one or more comorbidities including hypertension (58.4%), diabetes (21.8%) etc. Respiratory failure (99.0%), acute cardiac injury (52.5%), sepsis (40.6%) and acute kidney injury (22.8%) were most common complications. Patients died within 3 days of admission were more likely to develop sepsis compared with those survived 3 days of admission. Higher heart rate and respiration rate, increased white blood cell count and neutrophil count, elevated myoglobin level and depressed oxygen saturation on admission were associated with rapid disease progress to death within 3 days of admission. The AUCs for white blood cell count and neutrophil count were 0.71 (95% CI, 0.60-0.80) and 0.70 (95% CI, 0.59-0.79), respectively.

Conclusions Older patients with underlying comorbidities suffering COVID-19 were at increased risks of death. Respiratory failure, acute cardiac injury and acute kidney

injury played crucial roles in the death of COVID-19 patients. Of importance, early development of sepsis, increased white blood cell count and neutrophil count on admission were associated with the rapid disease progress to death.

Introduction

Since December 2019, the outbreak of coronavirus disease 2019 (COVID-19) caused by severe acute respiratory syndrome coronavirus 2 (SARS-CoV-2) swept across China and emerged in many other countries have caused global concerns. ¹ As of March 24, 2020, a total of 372,755 COVID-19 cases around the world have been confirmed and 16,231 lost their lives. ² In the early outbreak of COVID-19, respiratory infection symptoms occurred, with some patients rapidly developed acute respiratory distress syndrome (ARDS), acute respiratory failure and even death. Compared with severe acute respiratory syndrome (SARS) and Middle East respiratory syndrome (MERS), the concealed onset, similar or stronger contagion and lower mortality could be defined as the clinical features of the disease. ^{3, 4, 5} However, many patients suffered rapid disease progress to death after admission in the early breakout in Wuhan, China.

Previous studies focused on clinical characteristics and outcomes of COVID-19 patients varied from mild, severe, even deceased cases. ^{6, 7} But the causes and risk factors associated with rapid disease progress to death need to be addressed further. In this study, we aimed to describe the clinical characteristics and outcomes of nonsurvivors confirmed with SARS-CoV-2 infection in the early outbreak, and to analyze the possible risk factors associated with rapid disease progress to death after admission in patients with COVID-19.

Methods

Study Design and Participants

This study was approved by the Ethics Committee of Renmin Hospital of Wuhan University (No. WDRY2020-K059). 101 patients with confirmed COVID-19 admitted to Renmin Hospital of Wuhan University (including Shouyi campus and Eastern campus) and died before February 15, 2020 in Wuhan, China, were enrolled. Renmin Hospital of Wuhan University is one of the major tertiary hospitals in Wuhan, China and is a government designated hospital for COVID-19 treatment. All patients with COVID-19 enrolled in this study were diagnosed according to World Health Organization interim guidance ⁸. Large proportion of patients died within 3 days of admission in the early outbreak of COVID-19, to further investigate the causes and risk factors associated with the rapid disease progress to death, we also compared demographic, clinical, laboratory and radiological characteristics of patients died within 3 days with those survived 3 days of admission.

Procedures

We obtained epidemiological, demographic, clinical, laboratory, and outcome data from electronic medical records. Missing data were collected through direct communication with involved health-care providers or family member of patients. All data were checked by two sophisticated physicians.

The date of disease onset was defined as the day when the onset of symptoms were noticed. Acute respiratory distress syndrome (ARDS) and acute respiratory failure were defined according to the Berlin definition and previously reported. ^{9, 10} Acute kidney injury (AKI) was identified based on serum creatinine. ¹¹ Acute liver injury

was identified according to previous report ¹². Acute cardiac injury was defined if the serum ultra-sensitive troponin I was above the 99th percentile upper reference limit ⁶. Sepsis was defined according to the Third International Consensus Definitions for Sepsis and Septic Shock. ¹³ Characteristic chest computer tomography (CT) imaging of these nonsurvivors were evaluated by previously described method. ¹⁴

The primary outcome was organ injury or failure (including lung, heart, kidney and liver etc.) and risk factors for the rapid disease progress to death. Secondary outcomes were to present epidemiological and demographic data, comorbidities, signs and symptoms on admission, laboratory indicators, CT findings and treatments, and to compare the differences of patients died within 3 days with those survived 3 days of admission.

Statistical analysis

We expressed descriptive data as median (IQR) for continuous variables and number (%) for categorical variables. We used Pearson's chi-square test, the Mann-Whitney test and Fisher's exact test for comparisons between patients died within 3 days and those died after 3 days of admission, as appropriate. Univariate logistic regression analyses were performed to evaluate risk factors associated with rapid death within 3 days of admission. Receiver operating characteristic (ROC) curves were used to analyze the performance of associated risk factors for rapid disease progress to death. The area under the curve (AUC) > 0.70 was defined as good performance. All statistical analyses were performed using SPSS version 22.0 software (SPSS Inc). $P < 0.05$ was considered statistically significant.

Results

By February 15, 2020, 101 hospitalized patients with confirmed COVID-19 died in Renmin Hospital of Wuhan University (including Shouyi campus and Eastern campus) were included in this study. The median age was 71.0 (IQR, 59.0-80.0) years. 60 (59.41%) were males. There were 57 (56.4%) cases whose age over 70 years (Table 1). The most common symptoms were fever (76.2%), cough (58.4%), dyspnea (54.5%), fatigue (37.6%) and diarrhea (9.9%). Other less common symptoms were anorexia (5.9%), nausea and vomiting (2.0%) and abdominal pain (1.0%) (Table 1). The median duration from the onset of symptoms to admission and from admission to death were 9.0 (IQR, 5.0-13.0) days and 4.0 days (IQR, 2.0-7.0), respectively.

Forty-eight cases (47.52%) died within 3 days of admission, the median age was 72.0 (IQR, 59.0-78.0) years, 28 (58.3%) were male. Fifty-three cases (52.5%) died after 3 days of admission, the median age was 71.0 (IQR, 59.0-81.0) years, 32 (60.4%) were male. Compared with patients who survived 3 days, those died within 3 days of admission exhibited significantly higher respiration rate (25 vs 20 rpm, $P=0.005$) and heart rate (97 vs 84 bpm, $P=0.006$) on admission. There were no significant differences of self-report symptoms between two groups included fever, dyspnea, cough, fatigue etc. (Table 1). Among all the nonsurvivors, 81 (79.2%) patients had one or more underlying medical conditions. The most common comorbidities included hypertension (58.4%), cardiovascular disease (22.8%), diabetes (20.8%), chronic pulmonary disease (14.9%), cerebrovascular disease (12.9%) (Table 1). There is no significant difference on above mentioned comorbidities between who died within 3 days of admission and those survived 3 days of admission (Table 1).

We observed substantial abnormalities (below or over normal range) in laboratory findings of these nonsurvivors on admission. Inflammation was obvious and bacterial infection was suspected as shown by elevated neutrophil count, C-reactive protein and procalcitonin levels. Lymphopenia was obvious on admission as revealed by decreased lymphocyte count, especially decreased CD3⁺ T cells below normal range. Elevated levels of ultra-sensitive troponin I, myoglobin, D-dimer, aspartate aminotransferase, lactate, decreased albumin level, depressed PaO₂ and SpO₂ demonstrated impaired organ functions of lung, heart, liver as well as coagulation disruption on admission (Table 2). There were several differences of laboratory parameters between patients who died within 3 days and those survived 3 days of admission. Patients died within 3 days of admission had significantly higher white blood cell count (10.8 vs 6.7×10⁹/L, *P*= 0.001), neutrophil count (8.9 vs 5.5×10⁹/L, *P*=0.001). For other biochemical indexes, creatine kinase-MB (3.3 vs 2.0 ng/ml, *P*=0.036), myoglobin (186.6 vs 118.7 ug/L, *P*=0.034) were significantly higher in patients died within 3 days of admission (Table 2). Compared with patients survived 3 days of admission, those died within 3 days had longer prothrombin time (13.2 vs 12.5 s, *P*=0.040) and higher D-dimer concentration (7.64 vs 2.82, *P*=0.040). Blood gas analyses showed patients died within 3 days presented with significantly lower oxygen saturation (85.0% vs 91.0%, *P*=0.008) and higher lactate level (2.9 vs 2.2 mmol/L, *P*=0.042) compared with those died after 3 days which reflected poor oxygenation in these patients (Table 2). Chest CT scans were used to evaluate the features of lung injury. Patients suffered severe lung damage and their lung imaging features presented vast or merged glass shadow, but quantification of lung injury revealed no significant difference between patients died within 3 days and those died after 3 days of admission (Table 2 and Figure 1).

Among treatment strategies, most patients received antiviral therapy (96.0%) and antibacterial therapy (98.0%). Many received glucocorticoid therapy (43.6%) and immunoglobulin therapy (35.6%). Seventy-eight (77.2%) patients received high flow oxygen inhalation, 41 (40.6%) received noninvasive mechanical ventilation while 14 (13.9%) received invasive mechanical ventilation and 5 (5.0%) received continuous renal replacement therapy (Table 3).

Regarding to organ functions, 100 (99.0%) patients developed respiratory failure, 53 (52.5%) had acute cardiac injury, 41 (40.6%) developed sepsis, acute kidney injury were developed in 24 cases (23.8%), acute liver dysfunction were found in 18 cases (17.8%) and 15 (14.9%) suffered coagulation disorders among which one patient died of massive upper gastrointestinal bleeding. Compared with patients died after 3 days of admission, patients died within 3 days of admission were more likely to develop sepsis. (52.1% vs 30.2%, $P=0.025$) (Table 3).

As summarized in Table 4, higher heart rate and respiration rate, increased white blood cell count and neutrophil count, elevated myoglobin concentration and depressed oxygen saturation were associated with rapid disease progress to death within 3 days of admission. The AUCs for white blood cell count and neutrophil count were 0.71 (95% CI 0.60-0.80) and 0.70 (95% CI 0.59-0.79), respectively. The best cut-off values for white blood cell count and neutrophil count were $8.13 \times 10^9/L$ and $7.28 \times 10^9/L$, respectively (Figure 2). The AUCs of other indicators were with either poor sensitivity or specificity.

Discussion

As of February 15, 2020, 101 patients died because of COVID-19 were included in this study. In the early outbreak of COVID-19, major gaps in our knowledge of the epidemiology, clinical features and treatment measures of COVID-19 posed huge challenge for our clinical practice. Although previous study reported the mortality of patients with COVID-19 was 1.4%,¹⁵ some special population including the aged and individuals with underlying comorbidities may be vulnerable to SARS-CoV-2 infection. In our study, the median age of nonsurvivors was 71.0 years, 81.2% of them combined with one or more underlying medical conditions including hypertension, cardiovascular disease, diabetes, chronic pulmonary disease etc. This suggested that aged individuals with chronic medical conditions were more likely to suffer a severe attack and death.

Common symptoms at onset of COVID-19 were fever, dry cough, myalgia, fatigue etc.^{6, 16} In our study, we observed that besides fever and cough, dyspnea (54.5%) presented early in most nonsurvivors with confirmed COVID-19, similar finding has also been observed in critically ill patients reported by Yang etc.¹⁷ Recent publication suggested the median time from onset of symptoms to hospital admission of deceased patients was 10.0 (IQR, 7.0-13.0) days, which tended to be longer than that of recovered patients (9.0 (6.0-12.0) days).¹⁸ In our study, the median time from symptom onset to admission of patients died within 3 days and after 3 days of admission was 10.0 (6.0-13.0) days and 8.0 (4.0-14.0) days, respectively, but with no significantly difference between two groups. This indicated that although longer duration before admission might be associated with poor prognosis of COVID-19 patients, it was not contributed to the rapid disease progress to death within 3 days of

admission.

Abnormal laboratory findings on admission suggested impaired pulmonary, cardiac, liver and coagulation functions as well as disturbed immune function of these nonsurvivors even before hospitalization. ARDS was the most common complication in nonsurviving patients with COVID-19 and oxygen saturation was an important manifestation of ARDS. In our study, SpO₂ of patients died within 3 days of admission was 85.0% on admission, which was significantly lower compared with those died after 3 days of admission. These suggested that PaO₂ and SpO₂ on admission might serve as early warning signals of poor prognosis and should attract more attentions. In terms of SARS, severe respiratory failure was the leading cause of mortality, with little other organ failure.¹⁹ In our study, it was noticed that 52.5% and 23.8% nonsurvivors suffered acute cardiac injury and AKI, respectively. Angiotensin-converting enzyme 2 (ACE2), a crucial SARS-CoV-2 receptor, distributed widely in heart, kidney and intestine etc.^{20, 21, 22} Whether SARS-CoV-2 attack heart and kidney or other vital organs directly needs to be confirmed further.

Usually, neutrophils do not elevated significantly during viral infections. However, viral infection might impair the immune system and facilitate opportunistic infection and neutrophils are crucial in protection against bacterial infections.²³ Of interest, the occurrence of sepsis and significantly elevated neutrophils were noticed in patients died with COVID-19, especially in those died within 3 days of admission. This reminded us that secondary infection could be related to the rapid disease progress to death. Frequent detection of bacterial infection indicators like procalcitonin and early implementation of antibiotics might be beneficial for patients suspected of bacterial

infections. Compared with patients died after 3 days of admission, prolonged prothrombin time and remarkably increased D-dimer were noticed in patients died within 3 days of admission, which together with depressed platelet count indicated coagulation disturbance and tendency of disseminated intravascular coagulation in these patients.

Up to now, no antiviral treatment has been recommended for coronavirus treatment except supportive care and organ support.^{6, 24} In current clinical practice, arbidol was used as an antiviral treatment for SARS-CoV-2 infected patients, but the efficacy remains to be proved. Other antiviral medications including remdesivir, lopinavir and traditional Chinese medicine are still being verified in clinical trials. Application of glucocorticoid depended on the severity of inflammatory response. In our study, most nonsurvivors received high flow oxygen inhalation, but quite a low proportion of patients received machine ventilation partly due to limited medical resources against the steeply increasing number of patients in early outbreak.

Univariate logistic regression analyses and ROC were conducted to assess risk factors and their performance associated with the rapid disease progress to death within 3 days of admission in COVID-19 patients. Previous study has demonstrated that old age was an independent risk factor for death of COVID-19 patients.²⁵ In our study, the median age of nonsurvivors was 71.0 year, this also suggested that old age was a critical factor for the death of COVID-19 patients, but it was not associated with the rapid disease progress to death. The AUCs for white blood cell count and neutrophil count were 0.71 (95% CI, 0.60-0.80) and 0.70 (95% CI, 0.59-0.79), respectively. Other indicators including respiration rate, heart rate, oxygen saturation and

myoglobin, to some extent, also related to the rapid disease progress to death of COVID-19 patients, but the performance of these indicators is not good due to either poor sensitivity or specificity.

Several limitations existed in this study. Firstly, not all laboratory tests were performed in all patients, the missing data might lead to bias and the roles of some indicators might be underestimated. Secondly, in the early outbreak of COVID-19, relatively inadequate medical resources might affect the observation of the natural course of disease. Finally, only 101 patients died with COVID-19 in one hospital were included in this study, the interpretation of our results might be limited, so further studies including multi-centers are still needed.

In conclusion, the findings of this study suggested that older patients with comorbidities had a steeply increased risk of death with COVID-19. Respiratory failure, acute cardiac and kidney injury played crucial roles in the death of patients. Of importance, the early development of sepsis, increased white blood cell count and neutrophil count were associated with rapid disease progress to death.

Corresponding author Chen Chen, MD (appreciation@whu.edu.cn) and Weixing Wang, MD (sate.llite@163.com) are the joint corresponding authors; Department of General Surgery, Renmin Hospital of Wuhan University, Wuhan, China.

Author Contributions: WW and CC conceptualized the paper. QS, JY and FJ drafted the manuscript. QS, KZ, JY, JF, XZ, XC, PH, YH and ML collected the epidemiological and clinical data. KZ, FJ, KZ contributed to the statistical analyses.

JY and FL contributed to radiological analyses. CC and WW were the manuscript's guarantors and supervised the overall study. All authors reviewed and approved the final version of the manuscript.

Acknowledgment We thank all the patients and health providers involved in this study.

Conflict of Interests The authors declare that there are no conflicts of interest.

Funding statement This study was funded by the National Natural Science Foundation of China (No. 81800574; No. 81870442) and Natural Science Foundation of Hubei Province (No. 2018CFB649). Funding sources for this study had no roles in the study design; data collection, analyses, or interpretation; or writing of the manuscript. The corresponding authors had full access to all the data in the study and were responsible for the final decision to submit for publication.

References

1. **Wang C, Horby PW, Hayden FG, Gao GF.** A novel coronavirus outbreak of global health concern. *The Lancet*. 2020; 395 (10223):470-73.
2. World Health Organization. Coronavirus disease 2019 (COVID-19) situation report–64. Available at: https://www.who.int/docs/default-source/coronaviruse/situation-reports/20200324-sitrep-64-covid-19.pdf?sfvrsn=723b221e_2. Mar 24, 2020.

3. **Chang D, Lin M, Wei L, et al.** Epidemiologic and clinical characteristics of novel coronavirus infections involving 13 patients outside Wuhan, China. *JAMA*. 2020; *JAMA*; 323 (11): 1092-93.
4. World Health Organization. Middle East respiratory syndrome coronavirus (MERS-CoV). Available at: <http://www.who.int/emergencies/mers-cov/en/>. Feb 25, 2020.
5. World Health Organization. Novel coronavirus–China. Available at: <http://www.who.int/csr/don/12-january-2020-novel-coronavirus-china/en/>. Feb 25, 2020.
6. **Wang D, Hu B, Hu C, et al.** Clinical characteristics of 138 hospitalized patients with 2019 novel coronavirus–infected pneumonia in Wuhan, China. *JAMA*. 2020; 323(11):1061-69.
7. **Du Y, Tu L, Zhu P, et al.** Clinical features of 85 fatal cases of COVID-19 from Wuhan: A retrospective observational study. *Am J Respir Crit Care Med*. 2020. Available at: <https://doi.org/10.1164/rccm.202003-0543OC>. Apr 03, 2020.
8. World Health Organization. Clinical management of severe acute respiratory infection when novel coronavirus (nCoV) infection is suspected. Available at: [https://www.who.int/publications-detail/clinical-management-of-severe-acute-respiratory-infection-when-novel-coronavirus-\(ncov\)-infection-is-suspected](https://www.who.int/publications-detail/clinical-management-of-severe-acute-respiratory-infection-when-novel-coronavirus-(ncov)-infection-is-suspected) Feb 25, 2020.
9. **Azoulay E, Mokart D, Kouatchet A, Demoule A, Lemiale V.** Acute respiratory failure in immunocompromised adults. *The Lancet Respiratory Medicine*. 2019; 7(2): 173-86.
10. **ARDS Definition Task Force, Ranieri VM, Rubenfeld GD, et al.** Acute respiratory distress syndrome: The Berlin Definition. *JAMA*. 2012; 307 (23) :2526-33.

11. **Khwaja A.** KDIGO clinical practice guidelines for acute kidney injury. *Nephron Clin Pract.* 2012; 120(4): c179-84.
12. **Koch DG, Speiser J, Durkalski V, et al.** The natural history of severe acute liver injury. *Am J Gastroenterol.* 2017; 112 (9): 1389-96.
13. **Singer M, Deutschman CS, Seymour CW, et al.** The Third International Consensus Definitions for Sepsis and Septic Shock (Sepsis-3). *JAMA.* 2016; 315:801-10.
14. **Chung M, Bernheim A, Mei X, et al.** CT imaging features of 2019 novel coronavirus (2019-nCoV). *Radiology.* 2020; 295(1): 202-07.
15. **Guan WJ, Ni ZY, Hu Y, et al.** Clinical characteristics of 2019 novel coronavirus infection in China. *N Engl J Med,* 2020; Available at <https://www.nejm.org/doi/full/10.1056/NEJMoa2002032>. Feb 28 2020
16. **Jiang F, Deng L, Zhang L, Cai Y, Cheung CW, Xia Z.** Review of the Clinical Characteristics of Coronavirus Disease 2019 (COVID-19). *J Gen Intern Med.* 2020; Available at: <https://link.springer.com/article/10.1007/s11606-020-05762-w>. Mar 28, 2020.
17. **Yang X, Yu Y, Xu J, et al.** Clinical course and outcomes of critically ill patients with SARS-CoV-2 pneumonia in Wuhan, China: a single-centered, retrospective, observational study. *Lancet Respir Med.* 2020. Available at: [https://www.thelancet.com/journals/lanres/article/PIIS2213-2600\(20\)30079-5/fulltext](https://www.thelancet.com/journals/lanres/article/PIIS2213-2600(20)30079-5/fulltext). Feb 24, 2020.
18. **Chen T, Wu D, Chen H, et al.** Clinical characteristics of 113 deceased patients with coronavirus disease 2019: retrospective study. *BMJ.* 2020; 368:m1091.

19. **Gomersall CD, Joynt GM, Lam P, et al.** Short-term outcome of critically ill patients with severe acute respiratory syndrome. *Intensive Care Med.* 2004; 30(3): 381-87.
20. **Santos RAS, Sampaio WO, Alzamora AC, et al.** The ACE2/angiotensin-(1-7)/MAS axis of the renin-angiotensin system: focus on angiotensin-(1-7). *Physiological reviews.* 2018; 98(1): 505-53.
21. **Hashimoto T, Perlot T, Rehman A, et al.** ACE2 links amino acid malnutrition to microbial ecology and intestinal inflammation. *Nature.* 2012; 487(7408):477-81.
22. **Lu R, Zhao X, Li J, et al.** Genomic characterisation and epidemiology of 2019 novel coronavirus: implications for virus origins and receptor binding. *The Lancet.* 2020; 395(10224):565-74.
23. **Kolaczkowska E, Kubes P.** Neutrophil recruitment and function in health and inflammation. *Nat Rev Immunol.* 2013; 13(3): 159-75.
24. **de Wit E, van Doremalen N, Falzarano D, Munster VJ.** SARS and MERS: recent insights into emerging coronaviruses. *Nature Reviews Microbiology.* 2016; 14(8): 523-34.
25. **Zhou F, Yu T, Du R, et al.** Clinical course and risk factors for mortality of adult inpatients with COVID-19 in Wuhan, China: a retrospective cohort study. *The Lancet.* 2020; 395 (10229): 1054-62.

Table 1. Characteristics of COVID-19 nonsurvivors

Variables	Total (N=101)	Patients died within 3 days (N=48)	Patients survived 3 days (N=53)	P Value*
Age, years	71.0 (59.0-80.0)	72.0 (59.0-78.0)	71.0 (59.0-81.0)	0.838
< 70 years	44 (43.6)	19 (39.6)	25 (47.2)	0.443
≥ 70 years	57 (56.4)	29 (60.4)	28 (52.8)	
Sex, male	60 (59.4)	28 (58.3)	32 (60.4)	0.835
Smoking	5 (5.0)	2 (4.2)	3 (5.7)	1.000
Drinking	5 (5.0)	1 (2.1)	4 (7.5)	0.365
Exposure history	4 (4.0)	3 (6.3)	1 (1.9)	0.344
Comorbidities				
Hypertension	59 (58.4)	27 (56.3)	32 (60.4)	0.674
Cardiovascular disease	23 (22.8)	9 (18.8)	14 (26.4)	0.359
Diabetes	21 (20.8)	9 (18.8)	12 (22.6)	0.630
Chronic pulmonary disease	15 (14.9)	6 (12.5)	9 (17.0)	0.527
Cerebrovascular disease	13 (12.9)	4 (8.3)	9 (17.0)	0.195
Chronic kidney disease	10 (9.9)	2 (4.2)	8 (15.1)	0.096
Chronic liver disease	5 (5.0)	1 (2.1)	4 (7.5)	0.365
Malignancy	7 (6.9)	1 (2.1)	6 (11.3)	0.115
Number of comorbidities				0.132
0	2 (21.8)	12 (25.0)	10 (18.9)	..
1	37 (36.6)	21 (43.8)	16 (30.2)	..
≥2	42 (41.6)	15 (31.3)	27 (50.9)	..
Signs and Symptoms				
Fever	77 (76.2)	36 (75.0)	41 (77.4)	0.781
Dyspnea	55 (54.5)	27 (56.3)	28 (52.8)	0.730
Dry cough	59 (58.4)	26 (54.2)	33 (62.3)	0.410
Fatigue	38 (37.6)	20 (41.7)	18 (34.0)	0.425
Diarrhea	10 (9.9)	4 (8.3)	6 (11.3)	0.744
Anorexia	6 (5.9)	3 (6.3)	3 (5.7)	1.000
Abdominal pain	1 (1.0)	0	1 (1.9)	1.000
Nausea or vomiting	2 (2.0)	1 (2.1)	1 (1.9)	1.000
Vital signs on admission, Median (IQR)				
HR, bpm	88 (78-105)	97 (80-112)	84 (74-95)	0.006
RR, rpm	21 (19-30)	25 (20-36)	20 (19-24)	0.005
MAP, mmHg	93 (83-105)	93 (81-107)	93 (85-105)	0.859
Lung severity score	14 (6-18)	13 (6-18)	14 (5-19)	0.899
From symptoms to admission, d	9.0 (5.0-13.0)	10.0 (6.0-13.0)	8.0 (4.0-14.0)	0.472
From admission to death, d	4.0 (2.0-7.0)	2.0 (1.0-3.0)	7.0 (5.0-8.0)	<0.001

*Data are expressed as median (IQR) or n (%). *P values indicate differences between patients died within 3 days of admission and those survived 3 days of admission. P<0.05 was considered statistically significant. Abbreviations: HR= heart rate; IQR= interquartile range; MAP= mean arterial pressure; RR= respiratory rate.*

Table 2. Laboratory findings of COVID-19 nonsurvivors on admission

Variables	Normal Range	Total	Patients died within 3 days (N=48)	Patients survived 3 days (N=53)	P Value*
White blood cell count, ×10 ⁹ /L	3.5-9.5	8.2 (5.6-12.9)	10.8 (8.0-14.0)	6.7 (4.8-10.9)	0.001
Neutrophil count, ×10 ⁹ /L	1.8-6.3	7.1 (4.4-11.5)	8.9 (6.6-12.8)	5.5 (3.8-8.9)	0.001
Lymphocyte count, ×10 ⁹ /L	1.1-3.2	0.6 (0.4-0.9)	0.6 (0.4-0.9)	0.6 (0.4-0.8)	0.851
Platelet count, ×10 ⁹ /L	125-350	157 (118-212)	164 (105-239)	157 (122-203)	0.983
C-reactive protein, mg/L	0.068-8.2	105.9 (58.4-173.4)	119.8 (65.5-186.6)	86.7 (55.2-141.1)	0.094
Procalcitonin, ng/ml	<0.1	0.3 (0.1-1.4)	0.5 (0.1-2.4)	0.2 (0.1-0.5)	0.060
NT-proBNP, pg/mL	0-400	838 (351-2029)	889 (330-2728)	817 (358-1701)	0.608
Ultra-sensitivity troponin I, ng/ml	0-0.04	0.05 (0.02-0.17)	0.06 (0.02-1.33)	0.05 (0.02-0.11)	0.139
Creatine kinase-MB, ng/ml	0-5	2.6 (1.2-4.5)	3.3 (2.1-7.7)	2.0 (1.0-4.1)	0.036
Myoglobin, ug/L	0-110	125.0 (73.9-473.8)	186.6 (84.6-1000.0)	118.7 (64.1-344.7)	0.034
Alanine aminotransferase, U/L	7-40	25.0 (18.0-48.3)	27.5 (18.0-54.8)	23.0 (16.3-41.5)	0.111
Aspartate aminotransferase, U/L	13-35	41.5 (29.0-64.5)	50.5 (29.3-73.8)	39.0 (28.0-52.0)	0.096
Albumin, g/L	40-55	33.0 (30.3-36.4)	32.5 (29.1-35.1)	33.1 (30.9-37.0)	0.225
Total bilirubin, mmol/L	0-23	12.0 (8.4-19.1)	12.2 (8.9-21.8)	12.0 (8.1-17.5)	0.611
Blood urea nitrogen, mmol/L	3.1-8.8	8.5 (5.5-14.4)	9.3 (6.8-19.9)	7.3 (5.4-13.5)	0.066
Creatinine, μmol/L	41-81	79.0 (53.5-128.0)	84.0 (55.8-154.0)	73.0 (53.0-116.8)	0.473
Blood glucose, mmol/L	3.9-6.1	7.3 (5.9-9.4)	7.3 (6.2-9.5)	7.3 (5.6-9.4)	0.484
Prothrombin time, s	9-13	12.8 (12.0-14.0)	13.2 (12.5-14.4)	12.5 (11.7-13.8)	0.040
Activated partial thromboplastin time, s	25.1-36.5	29.6 (27.9-33.3)	29.8 (28.6-33.7)	29.6 (27.7-33.2)	0.638
D-dimer, mg/L	0-0.55	3.95 (0.98-14.82)	7.64 (2.31-17.99)	2.82 (0.76-13.12)	0.040
CD3 ⁺ cell count, /ul	723-2737	306.0 (184.8-479.8)	252.5 (180.5-403.0)	326.5 (230.0-487.0)	0.356
CD4 ⁺ cell count, /ul	404-1612	185.0 (120.3-281.5)	180.0 (126.0-298.0)	188.5 (106.8-278.5)	0.744
CD8 ⁺ cell count, /ul	220-1129	111.0 (52.0-158.3)	70.0 (47.3-150.0)	132.0 (61.8-168.0)	0.133
Blood gas analysis					
pH	7.35-7.45	7.42 (7.35-7.46)	7.40 (7.29-7.45)	7.43 (7.39-7.47)	0.057
PaO ₂ , mmHg	80-100	54.5 (41.0-69.8)	49.5 (37.3-65.0)	57.0 (45.8-80.5)	0.063
PaCO ₂ , mmHg	35-45	36.5 (30.8-41.0)	38.0 (29.3-42.0)	34.5 (31.0-40.3)	0.364
SpO ₂ , %	95-98	89.0 (77.8-94.0)	85.0 (71.5-92.5)	91.0 (81.5-96.0)	0.008
Lactate, mmol/L	0.5-1.5	2.6 (1.9-3.6)	2.9 (2.2-4.2)	2.2 (1.4-3.6)	0.042

Data are expressed as median (IQR). *P values indicate differences between patients died within 3 days of admission and those survived 3 days of admission. P<0.05 was considered statistically significant. Abbreviations: PaCO₂=partial pressure of carbon dioxide; PaO₂= partial pressure of oxygen; SpO₂= oxygen saturation.

Table 3. Complications and treatments of COVID-19 nonsurvivors

Variables	Total (N=101)	Patients died within 3 days (N=48)	Patients survived 3 days (N=53)	P Value*
Complications				
Respiratory failure	100 (99.0)	47 (97.9)	53 (100.0)	0.475
Acute cardiac injury	53 (52.5)	28 (58.3)	25 (47.2)	0.262
Acute kidney injury	24 (23.8)	12 (25.0)	12 (22.6)	0.781
Acute liver injury	18 (17.8)	9 (18.8)	9 (17.0)	0.817
Coagulation disorders	15 (14.9)	4 (8.3)	11 (20.8)	0.080
Sepsis	41 (40.6)	25 (52.1)	16 (30.2)	0.025
Treatments				
Antiviral therapy	97 (96.0)	47 (97.9)	50 (94.3)	0.619
Antibiotic therapy	99 (98.0)	47 (97.9)	52 (98.1)	1.000
Glucocorticoid therapy	44 (43.6)	17 (35.4)	27 (50.9)	0.116
Immunoglobulin therapy	36 (35.6)	13 (27.1)	23 (43.4)	0.087
High flow oxygen inhalation	78 (77.2)	35 (72.9)	43 (81.1)	0.326
NIMV	41 (40.6)	11 (22.9)	30 (56.6)	0.001
IMV	14 (13.9)	8 (16.7)	6 (11.3)	0.437
CRRT	5 (5.0)	2 (4.2)	3 (5.7)	1.000

Data are expressed as n (%). *P values indicate differences between patients died within 3 days of admission and those survived 3 days of admission. $P < 0.05$ was considered statistically significant. Abbreviations: CRRT=continuous renal replacement therapy; IMV= invasive mechanical ventilation; NIMV= noninvasive mechanical ventilation.

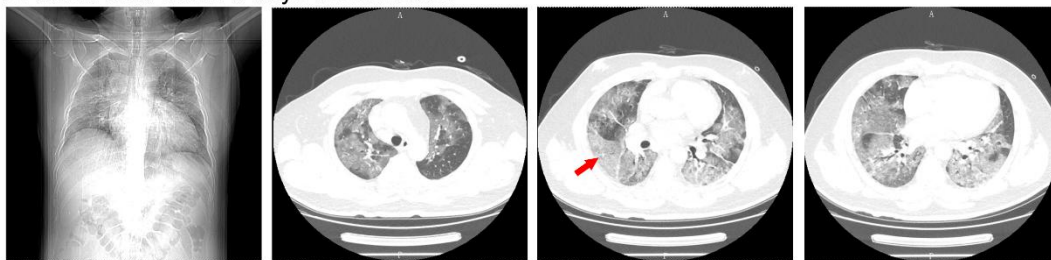
Table 4. Univariate logistic regression analyses of risk factors for the rapid disease progress to death in COVID-19 patients

Variables	Univariable OR (95% CI)	P value*
Demographics and vital signs		
Age \geq 70 years	1.36 (0.62-3.01)	0.443
Sex, male	0.92 (0.49-2.41)	0.835
RR	1.03 (1.01-1.05)	0.017
HR	1.07 (1.02-1.13)	0.005
Laboratory findings		
White blood cell count	1.16 (1.05-1.28)	0.003
Neutrophil count	1.16 (1.05-1.29)	0.003
Myoglobin	1.002 (1.001-1.004)	0.006
SpO ₂	0.95 (0.91-0.99)	0.012

* $P < 0.05$ was considered statistically significant. Abbreviation: RR=respiratory rate; HR=heart rate; PaO₂= partial pressure of oxygen.

Figure 1

A Patient died within 3 days of admission



B Patient died after 3 days of admission

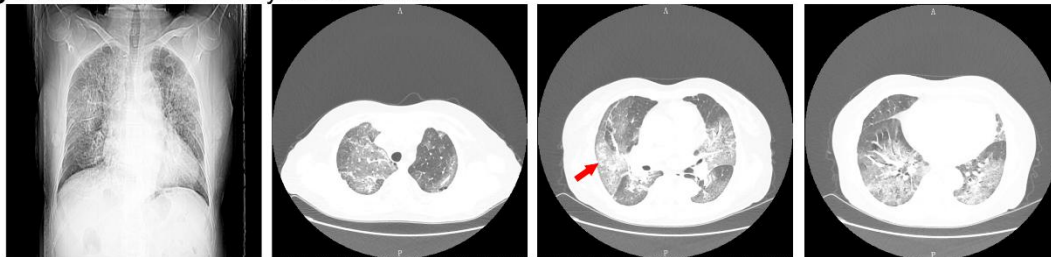


Figure 1. Chest CT manifestations of COVID-19 nonsurvivors. A: Chest computed tomographic images obtained from a 47-year-old male patient on day 6 after onset of symptoms showed extensive and fused ground glass opacity (red arrow) in both lungs. B: Chest computed tomographic images obtained from a 59-year-old female on day 7 after onset of symptoms showed extensive and fused ground glass opacity (red arrow) in both lungs.

Figure 2

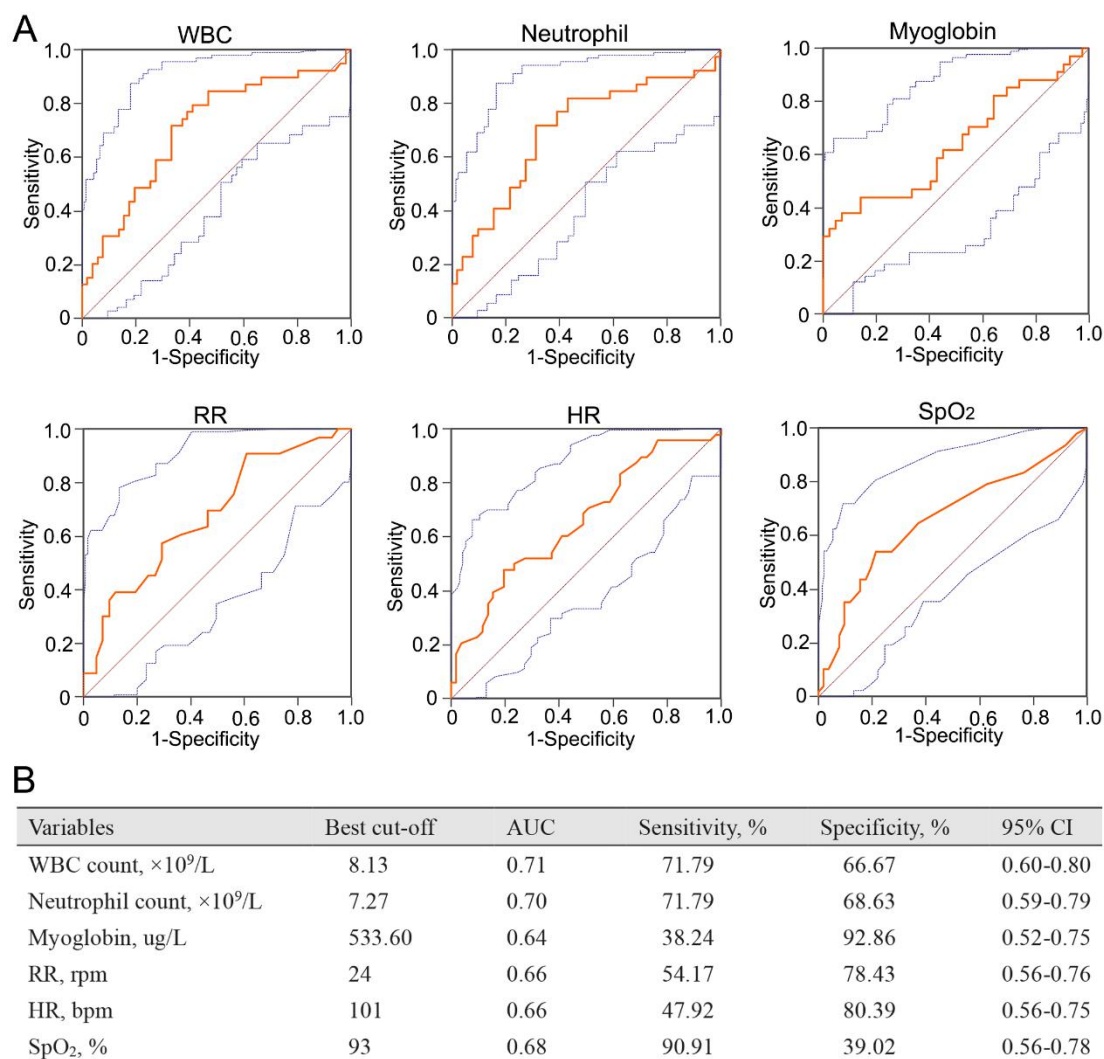


Figure 2. Performances of White blood cell count, neutrophil count, myoglobin, respiratory rate, heart rate and oxyhemoglobin saturation for the rapid disease progress to death of COVID-19 nonsurvivors. Abbreviation: AUC=area under the curve; RR=respiratory rate; HR=heart rate; SpO₂=oxyhemoglobin saturation. A, blue lines refer to 95% confidence interval; orange lines refer to receiver operating characteristic curve.