

Clinical characteristics of 101 non-surviving hospitalized patients with COVID-19—A single center, retrospective study

Qiao Shi¹, Kai-Liang Zhao¹, Jia Yu¹, Jia-Rui Feng¹, Kai-Ping Zhao², Xiao-Yi Zhang³, Xiao-Yan
Chen¹, Peng Hu⁴, Yu-Pu Hong¹, Man Li¹, Fang Liu⁵, Chen Chen¹, Wei-Xing Wang¹

¹Department of General Surgery, Renmin Hospital of Wuhan University, Wuhan, China

²Department of Medical Record Management and Statistics, Beijing Jishuitan Hospital, Beijing,
China

³Department of Critical Care Medicine, Zhongnan Hospital of Wuhan University, Wuhan, China

⁴Department of Emergency, Renmin Hospital of Wuhan University, Wuhan, China

⁵Department of Radiology, Renmin Hospital of Wuhan University, Wuhan, China

Q Shi, KL Zhao and J Yu contributed equally to this article.

Correspondence to: WX Wang, sate.llite@163.com and C Chen, appreciation@whu.edu.cn

Dr. Weixing Wang serves as the corresponding author to communicate with editors.

Weixing Wang, MD

Department of General Surgery,

Renmin Hospital of Wuhan University,

238 Jiefang Road, Wuchang District

Wuhan 430060, China.

Phone: +86 13907141893

E-mail: sate.llite@163.com

WHAT IS ALREADY KNOWN ON THIS TOPIC

COVID-19 have deprived thousands of lives and caused global concerns. As of March 4, 2020, a total of 80420 COVID-19 cases in China have been confirmed and over 2900 lost their life. We searched PubMed for articles published up to Mar 4, 2020, using the keywords “2019 novel coronavirus”, “2019-nCoV”, “COVID-19”, or “SARS-CoV-2”. We identified that none study focused on the demographic, clinical characteristics and induced-death factors of non-survivors with COVID-19.

WHAT THIS STUDY ADDS

The median age of the 101 died patients with confirmed COVID-19 were 71 years (IQR, 59-80). Of 101 died patients, 82 (81.19%) had 1 or more comorbidities including 59 (58.42%) hypertension and 22 (21.78%) diabetes etc. 100 (99.01%) suffered respiratory failure, 53 (52.48%) developed acute myocardial injury, acute kidney and liver injury occurred in 23 (22.77%) and 18 (17.82%) patients, respectively. This indicated that older patients (>70 years) with comorbidities had a steeply increased risk of death when they suffered COVID-19. Besides respiratory failure, acute cardiac and kidney damage or failure, secondary to COVID-19, played a crucial role in causing death of patients.

ABSTRACT

OBJECTIVE

To study the clinical characteristics of non-surviving hospitalized patients with confirmed COVID-19 in Wuhan, China, and tracked the causes of the death.

DESIGN

Retrospective case series.

SETTING

Two campus of Renmin Hospital of Wuhan University in Wuhan, China, and is responsible for the treatments for COVID-19 assigned by the government.

PARTICIPANTS

101 non-surviving hospitalized patients with confirmed COVID-19. Data were collected from 1 January 2020 to 15 February 2020.

MAIN OUTCOME MEASURES

Clinical data were collected using a standardized case report form. If information was not clear, the investigators in Wuhan contacted the doctor responsible for treating the patients or family members of non-survivors for clarification.

RESULTS

Of 121 died patients with confirmed COVID-19, 101 cases with relatively complete medical records were included. The median age of the 101 non-survivors were 71 years (IQR, 59-80), 60 (59.41%) were men. 82 (81.19%) had fever, 82 (81.19%) had 1 or more comorbidities including hypertension (59 [58.42%]) and diabetes (22 [21.78%]) etc. The median course from hospitalization to death was 4d (IQR, 2-7d). Of 101 died patients, 100 (99.01%) suffered respiratory failure, 53 (52.48%) developed acute myocardial injury, acute kidney and liver injury occurred in 23

(22.77%) and 18 (17.82%) patients, respectively. Chest computed tomographic scans of non-survivors showed vast and fused ground-glass shadows. Compared to patients who survived 3 days, no statistical difference was noticed on lung severity score (11.91 vs 12.07) in patients who died within 3 days. Furthermore, significant elevated laboratory indicators including hypersensitive troponin (1.98 vs 0.2ng/ml), blood urea nitrogen (15.20 vs 10.08mmol/l), neutrophil count (11.23 vs 6.48×10⁹/L), procalcitonin (2.26 vs 0.58ng/ml) and lactic acid (3.80 vs 2.62 mmol/l) etc. were noted in patients who died with 3 days while PaO₂ (54.75 vs 67.45mmHg), CD3% (51.57 vs 60.43%) and CD8% (16.42 vs 23.42%) were significantly depressed.

CONCLUSION

Older patients (>70 years) with comorbidities had a steeply increased risk of death when they suffered COVID-19. Besides respiratory failure, acute cardiac and kidney damage or failure, secondary to COVID-19, played a crucial role in causing death of patients.

Introduction

Since December 2019, the outbreak of corona virus disease-19 (COVID-19) which swept across China and emerged in many other countries have caused global concerns [1]. As of March 4, 2020, a total of 80420 COVID-19 cases in China have been confirmed and over 2900 lost their life. In the early stages of this COVID-19, respiratory infection symptoms occurred, with some patients rapidly developed acute respiratory distress syndrome (ARDS), acute respiratory failure and even death. Compared with Severe Acute Respiratory Syndrome (SARS) and Middle East Respiratory Syndrome (MERS), the concealed onset, similar or stronger contagion and lower mortality could be defined as the clinical features of the disease [2-4]. However, many patients suffered a death attack in the early stages of the outbreak in Wuhan City, China.

Previous studies concentrated to show the epidemiological findings, clinical characteristics, and clinical outcome of patient with COVID-19 involved in mild and severe cases [5-6]. But those infected by severe acute respiratory syndrome coronavirus 2 (SARS-CoV-2) are vulnerable to suffer severe attack or death, the causes that lead to the occurrence of rapid death are necessary to be addressed further.

Information regarding clinical features of death caused by COVID-19 has not been reported yet. We aimed to describe the demographic, clinical, laboratory, radiological characteristics and outcomes of non-surviving hospitalized patients confirmed with SARS-CoV-2 infection, and to analyze the possible risk factors that lead to death of SARS-CoV-2 infected patients. In this study, we investigated the characteristics of non-surviving patients with confirmed SARS-CoV-2 infection admitted to Renmin Hospital of Wuhan University (including Shouyi campus and Eastern campus) before February 15, 2020. We hope that this study will provide some important information regarding to death of SARS-CoV-2 infected patients.

Methods

Study Design and Participants

All died patients with confirmed COVID-19 admitted to Renmin Hospital of Wuhan University (including Shouyi campus and Eastern campus) from January 1 to February 15, 2020 in Wuhan, China, were enrolled. Renmin Hospital of Wuhan University is one of the major tertiary teaching hospitals and is responsible for the treatments for COVID-19 assigned by the government. All patients with COVID-19 enrolled in this study were diagnosed according to World Health Organization interim guidance [7]. To analyze the reasons accounted for patients died in a short time after admission, we compared demographic, clinical, laboratory and radiological characteristics between patients died within 3 days of admission with those who survived 3 days.

Procedures

We obtained epidemiological, demographic, clinical, laboratory, and outcome data from electronic medical records, nursing records, laboratory tests, and radiological examinations. Missing data were collected and clarified through direct communication with involved health-care providers or family member of patients. All data were checked by two sophisticated physicians.

We collected data on age, sex, chronic medical conditions (hypertension, cardiovascular disease, chronic pulmonary disease, cerebrovascular disease, chronic kidney disease, diabetes, malignancy), symptoms from onset to hospital admission including fever, dry cough, expectorant, dyspnea, fatigue, anorexia, abdominal pain, headache, nausea and vomiting etc., laboratory parameters on admission, chest computed tomographic (CT) scans, and treatment measures (antiviral therapy, antibacterial therapy, corticosteroid therapy, respiratory support, kidney replacement therapy etc.). The date of disease onset was defined as the day when the onset symptoms were noticed. Acute respiratory distress syndrome (ARDS) and acute

respiratory failure were defined according to the Berlin definition and previous reported [8,9]. Acute kidney injury (AKI) was identified based on serum creatinine [10]. Acute liver injury was identified according to previous report [11]. Acute cardiac injury was defined if the serum hypersensitive troponin I were above the 99th percentile upper reference limit [5]. All these indicators were measured in Renmin Hospital of Wuhan University.

Outcomes

The primary outcome was organ damage or failure (including lung, heart, kidney and liver etc.) from admission to death and analyzed the risk factors of death. Secondary outcomes were to present epidemiological data, demographics, comorbidity, signs and symptoms on admission, laboratory indicators, CT findings and treatment, and compare the differences of patients died within 3d of admission and those survived 3d.

Statistical analysis

We expressed descriptive data as mean (SD) or median (IQR) for continuous variables and number (%) for categorical variables. We tested the distributions of variables for normality with Kolmogorov-Smirnov test. Means of continuous variables were compared using independent group t tests if the data were normally distributed; otherwise Mann-Whitney test was used. Proportions for categorical variables were compared using the χ test. All statistical analyses were performed using SPSS version 22.0 software (SPSS Inc). $P < 0.05$ was considered statistically significant.

Results

Epidemiological, demographic and clinical characteristics

By February 15, 2020, 121 hospitalized patients with confirmed COVID-19 had died in Renmin Hospital of Wuhan University (including Shouyi campus and Eastern campus), of whom 20 cases were excluded due to incomplete medical record. 101 cases were finally included in this study. 60 (59.41%) were males. The median age

was 71 years (IQR, 59-80; range, 35-100 years). From the age distribution, the results showed that there were 56.44% cases (57/101) whose age over 70 years (31 cases in 70-79y; 20 cases in 80-89y; and 6 cases in more than 90y). The median duration from hospital admission to death was 4 days (IQR, 2-7d). The most common symptoms were fever (82 cases [81.19%]), dyspnea (59 cases [58.42%]), dry cough (56 cases [55.45%]), fatigue (36 cases [35.64%]), expectoration (21 cases [20.79%]) and diarrhea (10 cases [9.90%]). Other less common symptoms were anorexia, myalgia, abdominal pain and distension, headache, nausea and vomiting, pharyngalgia, haematemesis and melena, hemoptysis. (**Table 1**)

Of the 101 patients, 82 (81.19%) had at least one comorbidity including hypertension (59 cases [58.42%]), cardiovascular disease (24 cases [23.76%]), diabetes (22 cases [21.78%]), chronic pulmonary disease (14 cases [13.86%]), cerebrovascular disease (13 cases [12.87%]), chronic kidney disease (11 cases [10.89%]) and malignancy (7 cases [6.93%]). (**Table 2**)

Regarding to organ functions, 100 patients (99.01%) developed acute respiratory failure, 53 (52.48%) had acute cardiac injury, acute kidney injury were developed in 23 cases (22.77%), acute liver dysfunction were found in 18 cases (17.82%) and 14 (13.86%) suffered coagulation disorders among which one patient was died of massive upper gastrointestinal bleeding. (**Table 2**)

Then we compared the demographic characteristics, presenting characteristics, and vital signs at presentation between patients died within 3 days of admission and after 3 days of admission. 48 cases (47.52%) died within 3 days of admission, median age was 72 years (IQR, 59-78; range, 30-94 years), 28 (58.33%) were males. 53 cases (52.48%) died after 3 days, median age was 71 years (IQR, 59-81; range, 31-100 years), 32 (60.38%) were males.

Compared with patients who survived 3 days, patients who died within 3 days

exhibited significantly higher respiration rate (25 *vs* 20) and heart rate (97 *vs* 84) at presentation. There were no significant differences of self-report symptoms between two groups including fever, dyspnea, cough, fatigue etc. (**Table 1**)

Laboratory findings

There were quite a lot differences of laboratory parameters between patients who died within 3 days of admission and those survived 3 days. Those died within 3 days of admission had significantly higher white blood cell count (12.36×10^9 *vs* $7.72 \times 10^9/L$), neutrophil count (11.23×10^9 *vs* $6.48 \times 10^9/L$) and lower eosinophils count (0.009×10^9 *vs* $0.028 \times 10^9/L$). Compared with patients who survived 3 days of admission, patients died within 3 days presented with significantly higher percentage of neutrophils (88.86% *vs* 81.95%) but significantly lower percentages of lymphocytes (7.18% *vs* 10.94%), monocytes (3.8% *vs* 6.56%) and eosinophils (0.06% *vs* 0.34%). For other biochemical indexes, procalcitonin (2.26 *vs* 0.58 ng/ml), hsTnI (1.98 *vs* 0.2 ng/ml), Creatine kinase-MB (6.14 *vs* 2.78 ng/ml), myoglobin (437.7 *vs* 216.8 ug/L) and blood urea nitrogen (15.2 *vs* 10.08 mmol/L) were over normal range and significantly higher in patients died within 3 days of admission. (**Table 3**)

Blood gas analyses showed patients died within 3 days presented with significantly lower oxygen saturation (80.58% *vs* 88.37%), higher lactate level (3.80 *vs* 2.62 mmol/L) and lower pH value (7.40 *vs* 7.42) compared with those survived 3 days. Although patients died within 3 days of admission had higher PaCO₂ (38.97 *vs* 35.44 mmHg) and lower PaO₂ (54.75 *vs* 67.45 mmHg), but there were no significant differences between two groups (**Table 4**). Cellular and humoral immunity analysis also revealed several differences between patients died within and over 3 days including percentage of CD3⁺ cells and CD8⁺ cells, concentrations of IgE antibody and C3 complement. Although only percentage of CD3⁺ cells in patients died within 3 days was below normal range, the percentage of CD3⁺ cells (51.57% *vs* 60.43%) and CD8⁺ cells (16.42% *vs* 23.42%) were significantly lower in patients died within 3

days of admission compared with those survived 3 days. Patients died within 3 days of admission had significantly higher level of IgE antibody over normal range compared with those survived 3 days (157.3 vs 86.44 IU/ml). Level of C3 complement was within normal range in both groups with a significantly higher titration in patients died within 3 days compared with those survived 3 days (1.03 vs 0.89g/L). Other immune parameters did not show significant differences between patients died within 3 days of admission and over 3 days. (**Table 5**)

Radiographic changes

Chest CT scans were used to evaluate the features of lung injury. Only 38 cases had chest CT image in our medical system (11 cases in within 3 days subgroup and 27 cases in over 3 days subgroup). Patients suffered severe lung damage and their lung imaging features presented the vast or merged glass shadow, but quantitation of lung lobe injury and injury score revealed no significant difference between the two subgroups. (**Table 4 and Figure 1**)

Treatment

Among treatment strategies, 97 (96.04%) patients received antiviral therapy, 99 (98.02%) received antibacterial therapy, 44 (43.56%) received glucocorticoid therapy, 36 (35.64%) received gamma globulin inhalation, 78 (77.23%) received high flow oxygen inhalation, 41(40.59%) received noninvasive ventilation, 14 (13.86%) received invasive mechanical ventilation and 5 (4.95%) received continuous renal replacement therapy . Patients who died within 3days and who survived 3days of admission received above treatment were showed in detail in **Table 6**. Among all treatments, except for noninvasive ventilation, no significant difference was noted between two groups.

Discussions

This report, to our knowledge, is the largest case series to analyze died patients with COVID-19 in hospital. As of February 15, 2020, 101 patients died because of

COVID-19 were included in this study. We aim to present the clinical features, organ dysfunction, laboratory indicators of the 101 non-survivors, and analyze possible causes accounted for the rapid progress of disease and death. In the early outbreak of COVID-19, major gaps in our knowledge of the epidemiology, clinical features and treatment measures of COVID-19 posed huge challenge for our clinical practice. Although previous study reported the mortality of patients with COVID-19 is 1.4% [12], some special population including the aged and individuals with underlying comorbidities may be vulnerable to SARS-CoV-2 infection. In our cohort, the median age of non-survivor was 71 years, 81.19% of them combined with one or more underlying medical conditions including hypertension, cardiovascular disease, diabetes, chronic pulmonary disease, cerebrovascular disease, chronic kidney disease and malignancy. This study suggested that patients aged over 70 years with chronic medical conditions were more likely to suffer a severe attack and death.

Common symptoms at onset of COVID-19 were fever, dry cough, myalgia, fatigue etc. [5, 13]. In our cohort, we observed that, besides fever and cough, dyspnea (58.42%) presented early in most non-survivors with confirmed COVID-19, similar finding has also been observed in critically ill patients reported by Yang etc. [14]. In these non-survivors, featured complications during hospitalization including ARDS and respiratory failure, acute cardiac injury (ACI), AKI, acute liver injury (ALI) and abnormal coagulation. In terms of SARS, severe respiratory failure was the leading cause of mortality, with little other organ failure [15]. It is surprised that we observed 52.48% and 22.77% non-survivors suffered heart failure and AKI, respectively. Angiotensin-converting enzyme 2 (ACE2), a crucial SARS-CoV-2 receptor, distributed widely in heart, kidney and intestine etc. [16-18]. Whether SARS-CoV-2 attack heart and kidney or other vital organs directly need to be confirmed further.

The most common laboratory abnormalities observed in this study were elevated white blood cell count, neutrophil count, C-reactive protein, high sensitivity troponin, blood urea nitrogen and decreased lymphocytes percentage etc. (**Table 3, 5**).

Compared with those died after 3 days of admission, non-survivors died within 3 days had numerous different findings including depressed percentages of lymphocyte, CD3⁺ and CD8⁺ cells, and elevated white blood cell count, high sensitivity troponin and urea nitrogen etc. These evidences suggest that SARS-CoV-2 infection may be associated with cellular immune deficiency, acute myocardial injury and kidney injury etc. These results also support the described organ failure above. In addition, the characteristic chest CT imaging of these non-survivors were evaluated by previous described method ^[19]. The CT features demonstrated extensive infection and severe damage, regarded as “white lung”, in five lobes, but no significant difference was found between the two groups. These characteristics combined with above repented organ failure, laboratory abnormalities suggested that early organ dysfunction or failure were responsible for rapid progression of disease and death of the patients.

Up to now, no antiviral treatment has been recommended for coronavirus treatment except supportive care and organ support ^[5, 20]. In current clinical practice, arbidol was used as an antiviral treatment for SARS-CoV-2 infected patients, but the curative effect remains unclear. Other antiviral medications including remdesivir and lopinavir etc. are still being verified in clinical trials. Furthermore, use of intravenous immunoglobulin is recommended to enhance the ability of anti-infection for severely ill patients and steroids are recommended for patients with ARDS, for as short duration of treatment as possible ^[21]. In this study, 96.04% patients received antiviral therapy, 98.02% received antibacterial therapy. Use of glucocorticoid mainly depended on the severity of inflammatory response. In the early outbreak of COVID-19, all the non-survivors received oxygen inhalation therapy including high flow oxygen inhalation (77.23%), but quite a low proportion of patients received machine ventilation partly due to limited medical resources against the steeply increasing number of patients.

Limitations of this study

Several limitations existed in this study. Firstly, nearly two thirds of these

non-survivors had no chest CT data in our medical system (because most of these patients were transferred from other hospitals without electronic version of imaging data) and evaluation of these imaging features partly depended on the experience of clinicians and radiologists. Secondly, incomplete medical information of some non-survivors may lead to the occurrence of bias. Thirdly, patients died within a short time after admission is unfavorable to track risk factors for this poor outcome. Finally, in the early outbreak of COVID-19, relatively inadequate medical resources may affect the observation of the natural course of disease.

Conclusion

The findings of our study suggested that older patients (>70 years) with comorbidities are at higher risks for poor outcomes. Besides respiratory failure, acute heart injury and kidney injury, secondary to COVID-19, played a crucial role in causing death of patients.

Contributors: WXW conceptualised the paper. QS and CC drafted the manuscript. QS, KLZ, JY, JRF, XYZ, XYC, PH, YPH and ML collected the epidemiological and clinical data. KLZ and KPZ contributed to the statistical analysis. JY and FL contributed to radiological analysis. CC and WW conceived and supervised the overall study. All authors reviewed and approved the final version of the manuscript.

Funding: This study was partly funded by National Natural Science Foundation of China (No.81800574; No.81870442; No.81700567).

Competing interests: All authors have completed the ICMJE uniform disclosure form. No support from any organization for the submitted work; no financial relationships with any organizations that might have an interest in the submitted work in the previous three years; no other relationships or activities that could appear to have influenced the submitted work.

Ethical approval: This study was approved by the Ethics Committee of Renmin Hospital of Wuhan University (No. WDRY2020-K059).

Declaration of interests

All authors declared no conflict of interest.

Patient consent: waived.

Data sharing: No additional data available.

Transparency: The manuscript's supervisors affirm that the manuscript is an honest, accurate, and transparent account of the study being reported; that no important aspects of the study have been omitted; and that any discrepancies from the study as planned have been explained.

References

1. Wang C, Horby PW, Hayden FG, et al. A novel coronavirus outbreak of global health concern. *The Lancet* 2020;395:470-73.
2. Chang D, Lin M, Wei L, et al. Epidemiologic and clinical characteristics of novel coronavirus infections involving 13 patients outside Wuhan, China. *Jama* 2020; published online 7 February. doi.org/10.1001/jama.2020.1623.
3. WHO. Middle East respiratory syndrome coronavirus (MERS-CoV). ;<http://www.who.int/emergencies/mers-cov/en/>. (accessed Feb 25, 2020)
4. WHO. Novel coronavirus–China. <http://www.who.int/csr/don/12-january-2020-novel-coronavirus-china/en/>. (accessed Feb 25, 2020)
5. Wang D, Hu B, Hu C, et al. Clinical characteristics of 138 hospitalized patients with 2019 novel coronavirus–infected pneumonia in Wuhan, China. *Jama* 2020; published online 7 February. doi.org/10.1001/jama.2020.1585
6. Chan JF-W, Yuan S, Kok K-H, et al. A familial cluster of pneumonia associated with the 2019 novel coronavirus indicating person-to-person transmission: a study of a family cluster. *The Lancet* 2020;395:514-23
7. WHO. Clinical management of severe acute respiratory infection when novel coronavirus (nCoV) infection is suspected. [https://www.who.int/publications-detail/clinical-management-of-severe-acute-respiratory-infection-when-novel-coronavirus-\(ncov\)-infection-is-suspected](https://www.who.int/publications-detail/clinical-management-of-severe-acute-respiratory-infection-when-novel-coronavirus-(ncov)-infection-is-suspected) (accessed Feb 25, 2020)
8. Azoulay E, Mokart D, Kouatchet A, et al. Acute respiratory failure in immunocompromised adults. *The Lancet Respiratory Medicine* 2019;7:173-86
9. Definition Task Force A, Ranieri V, Rubenfeld G, et al. Acute respiratory distress syndrome: the Berlin Definition. *Jama* 2012;307:2526-33
10. Khwaja A. KDIGO clinical practice guidelines for acute kidney injury. *Nephron Clin Pract* 2012;120:c179-c84
11. Koch DG, Speiser J, Durkalski V, et al. The natural history of severe acute liver injury. *The American journal of gastroenterology* 2017;112:1389

12. Guan W-j, Ni Z-y, Hu Y, et al. Clinical characteristics of 2019 novel coronavirus infection in China. *N Engl J Med* 2020; medRxiv Feb 9. doi.org/10.1101/2020.02.06.20020974
13. Zhu N, Zhang D, Wang W, et al. A novel coronavirus from patients with pneumonia in China, 2019. *N Engl J Med* 2020;382:727-33
14. Yang X, Yu Y, Xu J, et al. Clinical course and outcomes of critically ill patients with SARS-CoV-2 pneumonia in Wuhan, China: a single-centered, retrospective, observational study. *Lancet Respir Med* 2020; published online 24 February. doi.org/10.1016/S2213-2600(20)30079-5
15. Gomersall CD, Joynt GM, Lam P, et al. Short-term outcome of critically ill patients with severe acute respiratory syndrome. *Intensive Care Med* 2004;30:381-87
16. Santos RAS, Sampaio WO, Alzamora AC, et al. The ACE2/angiotensin-(1-7)/MAS axis of the renin-angiotensin system: focus on angiotensin-(1-7). *Physiological reviews* 2018;98:505-53
17. Hashimoto T, Perlot T, Rehman A, et al. ACE2 links amino acid malnutrition to microbial ecology and intestinal inflammation. *Nature* 2012;487:477-81
18. Lu R, Zhao X, Li J, et al. Genomic characterisation and epidemiology of 2019 novel coronavirus: implications for virus origins and receptor binding. *The Lancet* 2020;395:565-74
19. Chung M, Bernheim A, Mei X, et al. CT imaging features of 2019 novel coronavirus (2019-nCoV). *Radiology* 2020; published online 4 February. doi.org/10.1148/radiol.2020200230
20. de Wit E, van Doremalen N, Falzarano D, et al. SARS and MERS: recent insights into emerging coronaviruses. *Nature Reviews Microbiology* 2016;14:523
21. Chen N, Zhou M, Dong X, et al. Epidemiological and clinical characteristics of 99 cases of 2019 novel coronavirus pneumonia in Wuhan, China: a descriptive study. *The Lancet* 2020;395:507-13. doi: 10.1016/S0140-6736(20)30211-7

Table 1. Demographics and Baseline Characteristics of the Non-survivors

	Total (N=101)	≤3d Course of Disease Group (N=48)	>3d Course of Disease Group (N=53)	P Value [#]
Sex				
Male	60 (59.41%)	28 (58.33%)	32 (60.38%)	0.835
Female	41 (40.59%)	20 (41.67%)	21 (39.62%)	
Age, Median (IQR), y	71 (59-80)	72 (59-78)	71 (59-81)	0.762
Age Distribution				
Range	35y-100y	30y-94y	31y-100y	
30-39y	4 (3.96%)	2 (4.17%)	2 (3.77%)	1.000
40-49y	3 (2.97%)	2 (4.17%)	1 (1.89%)	0.931
50-59y	19 (18.81%)	8 (16.67%)	11 (20.75%)	0.600
60-69y	18 (17.82%)	7 (14.58%)	11 (20.75%)	0.418
70-79y	31 (30.69%)	18 (37.50%)	13 (24.53%)	0.158
80-89y	20 (19.80%)	9 (18.75%)	11 (20.75%)	0.801
≥90y	6 (5.94%)	2 (4.17%)	4 (7.55%)	0.767
Course of Disease, Median (IQR), d				
From admission to death	4 (2-7)	2 (1-3)	7 (5-8)	0.000 [#]
Signs and Symptoms				
Fever	82 (81.19%)	38 (79.17%)	44 (83.02%)	0.621
Dyspnea	59 (58.42%)	28 (58.33%)	31 (58.49%)	0.987
Dry cough	56 (55.45%)	23 (47.92%)	33 (62.26%)	0.147
Fatigue	36 (35.64%)	19 (39.58%)	17 (32.08%)	0.431
Expectoration	21 (20.79%)	8 (16.67%)	13 (24.53%)	0.331

Diarrhea	10 (9.90%)	4 (8.33%)	6 (11.32%)	0.616
Anorexia	7 (6.93%)	4 (8.33%)	3 (5.66%)	0.597
Myalgia	6 (5.94%)	1 (2.08%)	5 (9.43%)	0.255
Abdominal pain and distension	5 (4.95%)	3 (6.25%)	2 (3.77%)	0.909
Headache	5 (4.95%)	1 (2.08%)	4 (7.55%)	0.421
Nausea and vomit	3 (2.97%)	1 (2.08%)	2 (3.77%)	1.000
Pharyngalgia	3 (2.97%)	2 (4.17%)	1 (1.89%)	0.931
Haematemesis and melena	2 (1.98%)	1 (2.08%)	1 (1.89%)	1.000
Hemoptysis	2 (1.98%)	1 (2.08%)	1 (1.89%)	1.000
Heart Rate, Median (IQR), bpm	88 (78-106)	97 (81-112)	84 (75-98)	0.0168 [#]
Respiratory Rate, Median (IQR)	21 (19-30)	25 (20-36)	20 (19-24)	0.0029 [#]
Mean Systolic Pressure, Median (IQR), mmHg	127 (117-143)	125 (113-145)	129 (120-142)	0.5296
Mean Diastolic Pressure, Median (IQR), mmHg	78 (66-87)	76 (65-90)	79 (68-86)	0.5765

[#] *P* values indicate differences between patients died within 3 days of admission and those survived 3 days. *P* < 0.05 was considered statistically significant.

IQR: Interquartile range.

Table 2. Main comorbidities and complications

	Total (N=101)	≤3d Course of Disease Group (N=48)	>3d Course of Disease Group (N=53)	P Value [#]
Number of Main Comorbidities				
0	19 (18.81%)	11 (22.92%)	8 (15.09%)	0.315
1	28 (27.72%)	15 (31.25%)	13 (24.53%)	0.451
2	25 (24.75%)	14 (29.17%)	11 (20.75%)	0.328
3	15 (14.85%)	4 (8.33%)	11 (20.75%)	0.080
4	4 (3.96%)	2 (4.17%)	2 (3.77%)	1.000
5	4 (3.96%)	1 (2.08%)	3 (5.66%)	0.682
6	6 (5.94%)	1 (2.08%)	5 (9.43%)	0.255
Type of Main Comorbidities				
Hypertension	59 (58.42%)	26 (54.17%)	33 (62.26%)	0.410
Cardiovascular disease	24 (23.76%)	9 (18.75%)	15 (28.30%)	0.260
Diabetes	22 (21.78%)	9 (18.75%)	13 (24.53%)	0.482
Chronic pulmonary disease	14 (13.86%)	4 (8.33%)	10 (18.87%)	0.126
Cerebrovascular disease	13 (12.87%)	4 (8.33%)	9 (16.98%)	0.195
Chronic kidney disease	11 (10.89%)	2 (4.17%)	9 (16.98%)	0.039 [#]
Malignancy	7 (6.93%)	3 (6.25%)	4 (7.55%)	1.000
Complications				
Respiratory failure	100 (99.01%)	47 (97.92%)	53 (100%)	0.941
Heart failure	53 (52.48%)	28 (58.33%)	25 (47.17%)	0.262
Acute kidney injury	23 (22.77%)	12 (25.00%)	11 (20.75%)	0.611
Acute liver injury	18 (17.82%)	9 (18.75%)	9 (16.98%)	0.817
Coagulation disorders	14 (13.86%)	4 (8.33%)	10 (18.87%)	0.126

[#] P values indicate differences between patients died within 3 days of admission and those survived 3 days. $P < 0.05$ was considered statistically significant.

Table 3. Laboratory Analysis of the Non-survivors

	Normal Range	Total		≤3d Course of Disease Group		>3d Course of Disease Group		P Value [#]
		N	Mean±SD	N	Mean±SD	N	Mean±SD	
White blood cell count, ×10 ⁹ /L	3.5-9.5	90	9.728 ± 0.658	39	12.36 ± 1.25	51	7.72 ± 0.51	0.0003 [#]
Neutrophil%	40%-75%	90	84.95 ± 0.921	39	88.86 ± 1.18	51	81.95 ± 1.20	0.0001 [#]
Lymphocyte%	20%-50%	90	9.313 ± 0.708	39	7.18 ± 0.90	51	10.94 ± 0.99	0.0077 [#]
Monocyte%	3%-10%	90	5.364 ± 0.334	39	3.80 ± 0.36	51	6.56 ± 0.46	< 0.0001 [#]
Eosnophils%	0.4%-8%	90	0.237 ± 0.060	39	0.06 ± 0.02	51	0.34 ± 0.09	0.008 [#]
Neutrophil count, ×10 ⁹ /L	1.8-6.3	90	8.466 ± 0.655	39	11.23 ± 1.24	51	6.48 ± 0.48	0.0002 [#]
Lymphocyte count, ×10 ⁹ /L	1.1-3.2	90	0.760 ± 0.079	39	0.70 ± 0.08	51	0.69 ± 0.05	0.9127
Monocyte count, ×10 ⁹ /L	0.1-0.6	90	0.441 ± 0.030	39	0.39 ± 0.04	51	0.48 ± 0.04	0.1384
Eosnophils count, ×10 ⁹ /L	0.02-0.52	90	0.041 ± 0.022	39	0.009 ± 0.003	51	0.028 ± 0.007	0.014 [#]
Platelet count, ×10 ⁹ /L	125-350	89	178.2 ± 10.83	38	185.2 ± 21.25	51	173.0 ± 10.50	0.5781
C-reactive protein, mg/L	0.068-8.2	74	107.9 ± 7.237	35	123.4 ± 10.85	39	94.10 ± 9.26	0.0427 [#]
Procalcitonin, ng/ml	<0.1	82	1.304±0.397	36	2.26 ± 0.87	46	0.58 ± 0.13	0.0352 [#]
BNP, pg/mL	<75y, 0-125; ≥75y, 0-4	77	2016 ± 356.0	34	2149 ± 493.6	43	1912 ± 508.7	0.7434
High sensitivity troponin, ng/ml	0-0.04	76	0.983 ± 0.397	33	1.98 ± 0.87	43	0.20 ± 0.10	0.0237 [#]
Creatine kinase–MB, ng/ml	0-5	74	8.912 ± 4.046	33	6.14 ± 1.37	41	2.78 ± 0.36	0.0108 [#]
Myoglobin, ug/L	0-110	76	315.8 ± 38.50	34	437.7 ± 70.46	42	216.8 ± 31.78	0.0032 [#]
Alanine aminotransferase, U/L	7-40	88	55.99 ± 19.20	36	88.64 ± 46.39	52	34.15 ± 4.140	0.1641
Aspartate aminotransferase,U/L	13-35	88	116.8 ± 67.70	36	219.2 ± 165.2	52	46.15 ± 4.297	0.2108
Albumin, g/L	40-55	88	33.14 ± 0.505	36	32.32 ± 0.81	52	33.75 ± 0.63	0.1627
Total bilirubin, mmol/L	0-23	88	25.01 ± 6.686	36	28.94 ± 11.99	52	22.38 ± 7.77	0.6321
Blood urea nitrogen, mmol/L	3.1-8.8	87	11.94 ± 1.086	36	15.20 ± 2.37	51	10.08 ± 1.01	0.03 [#]

Creatinine, $\mu\text{mol/L}$	41-81	88	139.8 ± 22.83	36	172.5 ± 45.75	52	116.5 ± 21.63	0.2274
Blood glucose, mmol/L	3.9-6.1	88	8.910 ± 0.704	36	8.84 ± 0.80	52	8.99 ± 1.06	0.9171
Prothrombin time, s	9-13	79	15.35 ± 2.043	30	18.73 ± 5.23	49	13.22 ± 0.56	0.1864
Activated partial thromboplastin time, s	25.1-36.5	79	34.43 ± 2.097	30	37.96 ± 5.07	49	32.17 ± 1.21	0.1758
D-dimer, mg/L	0-0.55	79	15.31 ± 3.427	30	21.28 ± 7.19	49	11.47 ± 3.30	0.1666

P values indicate differences between patients died within 3 days of admission and those survived 3 days. *P* < 0.05 was considered statistically significant.

Table 4. Blood Gas Analysis and lung severity score of the Non-survivors

Normal Range		Total		$\leq 3\text{d}$ Course of Disease Group		$> 3\text{d}$ Course of Disease Group		P Value [#]
		N	Mean \pm SD	N	Mean \pm SD	N	Mean \pm SD	
pH	7.35-7.45	69	7.39 ± 0.01	31	7.40 ± 0.02	38	7.42 ± 0.01	0.013 [#]
PaO ₂ , mmHg	80-100	70	61.64 ± 3.75	32	54.75 ± 4.42	38	67.45 ± 5.71	0.092
PaCO ₂ , mmHg	35-45	70	36.97 ± 1.24	32	38.79 ± 2.21	38	35.44 ± 1.30	0.179
Oxyhemoglobin saturation	95-98	74	84.89 ± 1.46	33	80.58 ± 2.48	41	88.37 ± 1.56	0.007 [#]
Lactate, mmol/L	0.5-1.5	66	3.16 ± 0.28	30	3.80 ± 0.51	36	2.62 ± 0.26	0.035 [#]
Lung severity score	0-20	38	12.02 ± 6.76	11	11.91 ± 6.64	27	12.07 ± 6.94	0.946

P values indicate differences between patients died within 3 days of admission and those survived 3 days. *P* < 0.05 was considered statistically significant.

Table 5. Cellular and Humoral Immunity Analysis of the Non-survivors

	Normal Range	Total		≤3d Course of Disease Group		>3d Course of Disease Group		P Value [#]
		N	Mean±SD	N	Mean±SD	N	Mean±SD	
CD3%	56%-86%	56	56.91 ± 1.83	22	51.57 ± 3.19	34	60.43 ± 2.04	0.0171 [#]
CD3	723-2737 /ul	56	341.5 ± 29.1	22	331.10 ± 49.64	34	372.10 ± 38.37	0.512
CD4%	33%-58%	56	33.96 ± 1.432	22	34.20 ± 2.59	34	33.81 ± 1.69	0.8937
CD4	404-1612 /ul	56	195.6 ± 15.08	22	203.30 ± 23.56	34	197.9 ± 19.30	0.8596
CD8%	13%-39%	56	24.67 ± 4.630	22	16.42 ± 1.78	34	23.42 ± 1.93	0.0152 [#]
CD8	220-1129 /ul	56	130.4 ± 16.60	22	120.70 ± 30.10	34	151.0 ± 22.48	0.416
CD19%	5%-22%	56	29.04 ± 9.264	22	21.99 ± 2.38	34	18.08 ± 1.93	0.2079
CD19	80-616 /ul	56	106.0 ± 9.898	22	127.7 0± 18.56	34	93.40 ± 10.32	0.0868
CD16+56%	5%-26%	56	21.71 ± 1.820	22	24.04 ± 3.56	34	19.33 ± 1.67	0.1875
CD16+56	84-724 /ul	56	131.8 ± 21.19	22	167.60 ± 50.01	34	116.1 ± 13.37	0.2398
IgG	8-17 g/L	51	13.06 ± 0.578	21	13.50 ± 0.78	30	12.75 ± 0.83	0.5306
IgM	0.4-3.45 g/L	51	0.972± 0.072	21	0.88 ± 0.07	30	1.036 ± 0.11	0.2908
IgA	0.76-3.9 g/L	51	2.777 ± 0.182	21	2.86 ± 0.25	30	2.719 ± 0.269	0.7088
IgE	<100IU/ml	51	115.6 ± 17.87	21	157.30 ± 34.40	30	86.44 ± 17.13	0.0498 [#]
C3 Complement	0.81-1.6 g/L	51	0.945± 0.031	21	1.03 ± 0.05	30	0.89 ± 0.04	0.0245 [#]
C4 Complement	0.1-0.4 g/L	51	0.266 ± 0.017	21	0.29 ± 0.03	30	0.25 ± 0.02	0.2088

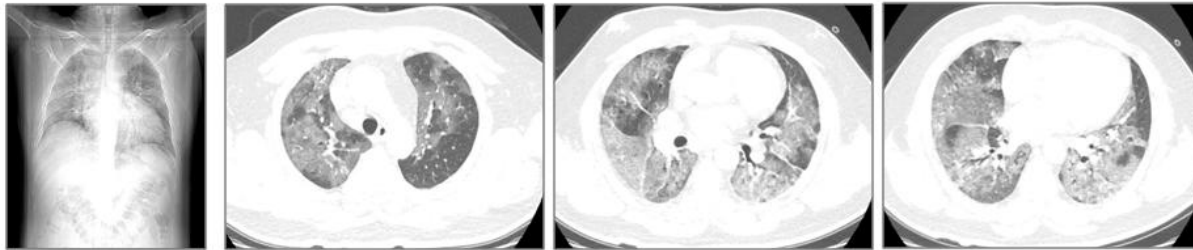
[#] P values indicate differences between patients died within 3 days of admission and those survived 3 days. P < 0.05 was considered statistically significant.

Table 6. Treatment of the Non-survivors

	Total (N=101)	≤3d Course of Disease Group (N=48)	>3d Course of Disease Group (N=53)	P Value [#]
Treatment				
Antiviral therapy	97 (96.04%)	47 (97.92%)	50 (94.34%)	0.357
Antibiotic therapy	99 (98.02%)	47 (97.92%)	52 (98.11%)	0.944
Glucocorticoid therapy	44 (43.56%)	17 (35.42%)	27 (50.94%)	0.116
Gamma globulin therapy	36 (35.64%)	13 (27.08%)	23 (43.40%)	0.087
High flow oxygen inhalation	78 (77.23%)	35 (72.92%)	43 (81.13%)	0.326
Noninvasive ventilation	41 (40.59%)	11 (22.92%)	30 (56.60%)	0.001 [#]
Invasive mechanical ventilation	14 (13.86%)	8 (16.67%)	6 (11.32%)	0.437
Continuous Renal Replacement Therapy (CRRT)	5 (4.95%)	2 (4.17%)	3 (5.66%)	1.000

[#] *P* values indicate differences between patients died within 3 days of admission and those survived 3 days. *P* < 0.05 was considered statistically significant.

A. Computed tomography images on day 6 after symptom onset. (From ≤ 3 d Course of Disease Group)



B. Computed tomography images on day 7 after symptom onset. (From > 3 d Course of Disease Group)

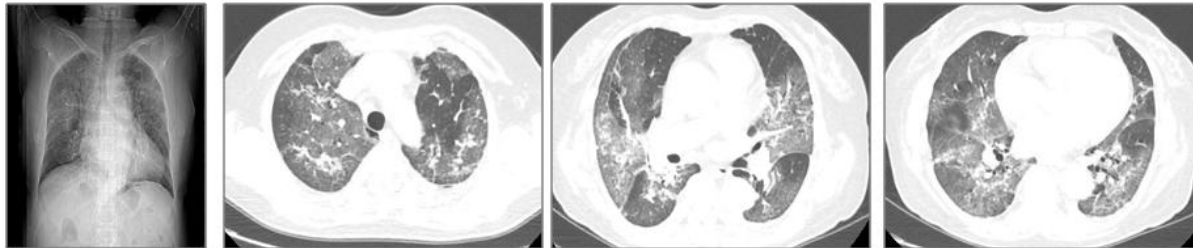


Figure 1: chest CT of two patients

The imaging features represented vast and fused ground-glass shadows in the five lobes between two patients (A and B).