

1 **Association of public care in childhood with social, criminal, cognitive, and health**  
2 **outcomes in middle-age: six decades of follow-up of members of the 1958 Birth Cohort**  
3 **Study**

4  
5 Tiffany H. Xie<sup>a,b</sup> (E. [tifxie@iu.edu](mailto:tifxie@iu.edu); ORCID: 0000-0002-0572-9760)

6 Carlos de Mestral,<sup>a</sup> PhD ([carlos.de-mestral-vargas@unisante.ch](mailto:carlos.de-mestral-vargas@unisante.ch); 0000-0002-0237-882X)

7 G. David Batty,<sup>a,c</sup> DSc PhD ([david.batty@ucl.ac.uk](mailto:david.batty@ucl.ac.uk); 0000-0003-1822-5753)

8  
9 <sup>a</sup>Department of Epidemiology & Public Health, University College London, London, UK

10 <sup>b</sup>Indiana University, Bloomington, USA

11 <sup>c</sup>School of Biological and Population Health Sciences, Oregon State University, Corvallis, USA

12  
13 **Abstract**

14 *Objectives:* To examine if there is an association between childhood public care and adverse life  
15 outcomes in middle-age.

16 *Methods:* We used data from the United Kingdom 1958 birth cohort study of 18,558 babies.

17 Parents of study members were surveyed at age 7, 11, and 16 years when experience of public  
18 care of their offspring was ascertained. An array of outcomes were self-reported by cohort  
19 members at age 42 years, and a cognitive test battery was administered at age 50.

20 *Results:* 420 (3.8%) of 11,160 individuals in the analytical sample experienced childhood public  
21 care prior to age 16. Net of confounding factors, public care was linked to half of the twenty-  
22 eight non-mutually exclusive endpoints captured in middle-age with the most consistent effects  
23 apparent for psychosocial characteristics: 6/7 sociodemographic, 2/2 anti-social, 3/3  
24 psychological, 1/3 health behaviours, 2/8 somatic health, and 0/5 cognitive.

25 *Conclusions:* The present study suggests that known associations between childhood care and  
26 outcomes in adolescence and early adulthood are also seen in middle-age.

27 *Policy implications:* Practitioners in health and social services should perhaps more closely  
28 monitor care graduates.

29  
30 *Keywords:* public care, out-of-home care, looked after children, life course, birth cohort study

31

## 32 **Introduction**

33 Prospective and retrospective cohort studies conducted over several decades have repeatedly  
34 demonstrated associations of childhood socioeconomic disadvantage with adult mortality and  
35 cardiovascular disease.<sup>1,2</sup> Such early life adversity has recently been more broadly defined to not  
36 only comprise economic hardship but also physical and emotional abuse, nutritional privation,  
37 sibling loss, parental separation, and out-of-home care, amongst other characteristics.<sup>3</sup> Children  
38 removed from their home into state care – also referred to as being looked after or public care –  
39 are typically placed with a foster family and usually separated from their biological families in  
40 order to protect their welfare following parental abuse or neglect, or, less commonly, as a result  
41 of their own anti-social behaviour. In recent years there has been a secular rise in the number of  
42 children placed in care in both the US<sup>4</sup> and the UK,<sup>5</sup> with current estimates suggesting up to 4%  
43 of the UK population may have experience of pre-adult care.

44  
45 Although public care is predicated upon providing a more nurturing and protective environment  
46 for children than available via their family of origin, there is emerging evidence that, in fact,  
47 exposure to childhood care is linked to poor outcomes. As such, relative to their unexposed  
48 peers, children with a history of public care followed into late adolescence and early adulthood  
49 are more likely to experience a greater prevalence of teenage pregnancy,<sup>6</sup> school exclusion,<sup>7</sup>  
50 mental health problems, particularly depression,<sup>8,9</sup> and substance abuse,<sup>7,10</sup> and be implicated in  
51 criminal activity.<sup>9,11</sup> These unfavourable outcomes are apparent alongside substantial  
52 socioeconomic disadvantage as characterised by poverty,<sup>12</sup> an absence of health insurance in  
53 societies without universal coverage,<sup>13</sup> low educational attainment, and insecure housing  
54 tenure.<sup>11</sup> Notably, many of these effects appear to hold after taking into account early life

55 confounding factors including illness and disability, suggesting that the impact of care may be  
56 independent of other adverse psychosocial characteristics that tend to prevail at the time of care  
57 placement.

58  
59 While it might be anticipated that this array of shorter-term negative life outcomes will position  
60 looked after children on a negative life trajectory into middle-age, studies exploring the longer  
61 term impact of early life care are very sparse. Most investigators have used a cross-sectional  
62 design in which participants were asked to recall care as much as six decades after the  
63 experience,<sup>9,11,12,14</sup> so raising concerns regarding recall bias. In the only prospective cohort study  
64 of which we are aware, economic hardship and mental health problems were associated with  
65 prior care exposure in a large cohort of Swedish children resurveyed at age 55 years,<sup>15</sup> but the  
66 impact of care on a broader array of outcomes is untested.

67  
68 We therefore addressed this gap in knowledge using data from a six decade-long follow-up of  
69 members of a large British birth cohort study in whom care data was prospectively gathered  
70 across childhood. This study also holds information on harmful health behaviours, such as heavy  
71 drinking and smoking, psychological problems, anti-social conduct, and, uniquely in the context  
72 research on the consequences of care, cognitive function. These data allow us to test the  
73 hypothesis that gradients between childhood public care and outcomes apparent in early  
74 adulthood will largely extend into middle-age.

75  
76  
77

78 **Methods**

79 We used data from the National Childhood Development Study, also known as the 1958 Birth  
80 Cohort Study.<sup>16,17</sup> An ongoing, closed, prospective cohort study – 11 surveys have been  
81 conducted to date – investigators have followed 18,558 births occurring in the United Kingdom  
82 during a single week in the late 1950s. In the present analyses we used data from birth to 16  
83 years of age to capture public care and potential covariates, while outcomes were assessed at  
84 surveys which took place at ages 42 and, for cognitive function only, 50 years. In childhood,  
85 participant consent was obtained from parents or caregivers, and, later, the study members  
86 themselves. The study was originally approved by the National Health Service Research Ethics  
87 Committee and latterly the Multicentre Research Ethics Committee. The present report  
88 conforms to STROBE (STrengthening the Reporting of OBservational studies in Epidemiology)  
89 guidelines.<sup>18</sup>

90

91 *Assessment of out-of-home care and covariates*

92 We ascertained childhood history of public care from prospective surveys conducted when  
93 participants were aged 7, 11, and 16 years. Parents were asked: “Has the child been under the  
94 care of the local authority, now or in the past?” Study members were regarded as having  
95 experienced care in childhood if a positive response was provided to enquiries at any of the three  
96 surveys. We derived three indicators of childhood socioeconomic status as recorded at birth:  
97 paternal occupational social class as based on the Registrar General’s social classification of  
98 occupations (6 levels),<sup>19</sup> maternal education level denoted by age at leaving full-time education  
99 (in the era of data collection, school was mandatory until age 15 years), and number of persons  
100 in the household. Indicators of childhood health, recorded at age 7, included hospital visits for

101 illnesses or medical tests, any disability (including birth defects, visual/hearing/speech handicaps,  
102 epilepsy, and asthma), and internalizing and externalizing symptoms, as quantified using the  
103 Bristol Social Adjustment Guides.<sup>20,21</sup> Summary scores were created for the internalizing  
104 symptoms of unforthcomingness, withdrawal, depression, and miscellaneous symptoms, and for  
105 the externalizing symptoms of anxiety for acceptance by adult or peers, hostility towards adults,  
106 restlessness, and inconsequential behaviour. Remaining covariates were maternal age at birth of  
107 study member and maternal marital status at birth (married, separated, divorced, widowed, stable  
108 union, and unmarried).

109

#### 110 *Assessment of adult outcomes*

111 All adult characteristics were self-reported. At age 42, we assessed occupational social class (as  
112 above), unemployment, receipt of any social benefits by the participant or their partner,  
113 educational attainment, cohabitation, marital status, and history of homelessness (since age 33  
114 years). Indicators of anti-social behaviour were use of illegal drugs in the past year and having  
115 received a criminal conviction (since age 33 years). We quantified psychological distress using  
116 the Malaise Inventory.<sup>22</sup> Validated in the general population, including the present sample,<sup>23</sup> this  
117 is a 24-item scale in which a score of  $\geq 7$  has been used to indicate morbidity. In addition to the  
118 reporting of symptoms, diagnosis was captured using enquiries about being under the care of a  
119 medical specialist for depression or being hospitalised in the past year for its treatment. Alcohol  
120 problems were assessed using the CAGE ('Cutting down, Annoyance by Criticism, Guilty  
121 feeling, and Eye-openers') Questionnaire. This is also validated screening instrument where a  
122 score of  $\geq 2$  indicates possible alcohol dependence or abuse,<sup>24,25</sup> a threshold that has been shown  
123 to have predictive capacity for mortality.<sup>26</sup>

124  
125 Current smoking was based on standard enquiries. For alcohol intake, study members were  
126 asked how many drinks they had consumed in the past 7 days, including beer, wine, spirits,  
127 sherry, ‘alcopops’, and any other alcoholic drinks. Heavy drinking was denoted by exceeding  
128 specific thresholds for women (>35 drinks/week) and men (>50). Participants were asked how  
129 often they take part in any physical activity with low levels being defined by exercising fewer  
130 than 3 times a week.<sup>27</sup> Obesity was denoted by a body mass index of  $\geq 30$  kg/m<sup>2</sup> as derived from  
131 self-reported height and weight.<sup>28</sup> Study members reported a physician diagnosis of diabetes and  
132 high blood pressure. Other health indices included physical disability – denoted by permanent  
133 illness or injury for six or more months – accidents (since age 33 years), hospital admissions,  
134 occurrence of any cancer, and general health. General health was rated on a standard four-point  
135 scale (excellent, good, fair, or poor). Accidents were defined as events such as road- or sports-  
136 related injury, sexual assault, or muggings that required medical attention.

137  
138 Lastly, cognitive function at age 50 was measured with a battery of memory and executive  
139 functioning tests which have been widely used in other population-based surveys.<sup>29</sup> Memory  
140 was assessed by a test which involved memorising words with immediate and delayed recall.  
141 Executive functioning was measured by letter cancellation and animal naming tasks.

142  
143 *Statistical analysis*

144 We used odds ratios with accompanying confidence intervals, computed using logistic regression,  
145 to summarise the relationship between childhood care and outcomes at age 42 years, while linear  
146 regression models produced beta coefficients, also with 95% confidence intervals, to quantify the

147 relationship between care and indicators of cognitive function at 50 years. For all endpoints,  
148 effect estimates were first adjusted for sex and then for a series of covariates which characterised  
149 the early life socio-demographic and health circumstances of the study member; as a birth cohort  
150 study, controlling for age was not required. All data analyses were conducted using Stata SE  
151 (Version 15.1, College Station, TX: StataCorp).

152

### 153 **Results**

154 In **Figure 1** we show the flow of study members into the analytical sample. In total, care history  
155 data across childhood were available for 16,583 study members; of these, 11,160 participated in  
156 the survey at age 42 and 9578 in the resurvey at age 50 years. Those study members who did not  
157 take part in the age 42 sweep were somewhat more likely to have experienced care in pre-  
158 adulthood (5.6%) than participants (3.8%). The same observations were made at age 50.

159

160 In **Table 1**, we present study member early life characteristics according to history of childhood  
161 care contingent upon participation in the survey at age 42 years. In this analytical sample, 420  
162 (3.8%) had a history of care before age 16. In general, children who had a history of being in  
163 public care had markedly less favourable characteristics relative to their unexposed peers. Thus,  
164 exposed children were more likely to come from socioeconomically disadvantaged backgrounds  
165 as evidenced by a greater prevalence of overcrowding, manual paternal social class, and lower  
166 maternal education. Similarly, such children had a higher health burden based on hospital visits,  
167 disability, and internalizing and externalizing symptoms, the latter differences being particularly  
168 marked. Given the clear patterning of early life characteristics according to public care exposure,  
169 we incorporated these factors as confounders in the following multivariable regression models in

170 which we attempted to ascertain the independent relation, if any, between childhood care and  
171 adult outcomes.

172  
173 In **Table 2** we depict the association of experience of public care with sociodemographic, anti-  
174 social, and psychological outcomes at age 42 years. Following adjustment for sex, individuals  
175 with a history of childhood care were more than twice as likely to be in a manual social class, be  
176 unemployed, be in receipt of social benefits, have only a basic education, and have experienced  
177 homelessness in adulthood compared to unexposed individuals. Children from a care  
178 background were also markedly more likely to live alone several decades later, though there was  
179 no apparent link with marital status. Separate control for potential confounding factors from  
180 early life, particularly poverty rather than indices of health, led to partial attenuation for some but  
181 not all associations of childhood care with adult outcomes. Statistical significance at  
182 conventional levels was typically retained, however, as evident by the absence of unity in the  
183 accompanying confidence intervals.

184  
185 Compared to participants who had not been in public care, those with such a history were more  
186 likely to engage in delinquency in middle-age, as evidenced by a doubling of risk of illicit drug  
187 use and a criminal conviction. While taking into account early social circumstances diminished  
188 the magnitude of effects for criminality, this was not the case for drug use.

189  
190 Participants with a history of care were more than twice as likely as those without to have had a  
191 diagnosis of adult depression, as denoted by being under the care of a specialist and/or being  
192 hospitalised. Notably, while controlling for socioeconomic position in childhood led to some



193 attenuation of these odds ratio but this was not the case after taking into account childhood  
194 distress, amongst other health characteristics. The care–alcohol problems relationship was more  
195 marked than for drinking behaviour (**Table 3**). Indeed, with the exception of cigarette smoking,  
196 where a doubling in prevalence was apparent in adults who, as children, had been looked after,  
197 the health behaviours of alcohol consumption and physical exertion were not strongly linked to  
198 care status.

199  
200 Individuals with a history of care were almost three times as likely to experience physical  
201 disability in adulthood compared to individuals without such a background. These individuals  
202 were also more likely to report poor general health and cancer from all sites combined. There  
203 were no clear link between pre-adult care and later obesity and, perhaps as a result, relationships  
204 with adult diabetes and hypertension were not apparent.

205  
206 In **Figure 2** we show the results from the multivariable models in which we adjust the  
207 association between care and adult outcomes for sex, sociodemographic and health covariates  
208 from childhood. Most of the socioeconomic outcomes were robust to such statistical treatment.  
209 Other endpoints which were also related to public care based on these more complex models  
210 included adult mental health, illicit drug use, smoking, disability and poor self-rated health.

211  
212 We also examined if being looked after in early life was related to cognitive function at age 50  
213 years (**Table 4**). The mean difference in performance on 5 tests according to care status was  
214 modest. With the exception of letter cancellation speed, an indicator of sustained concentration,  
215 these differences were apparent after sex-adjustment but were largely lost after control for

216 multiple potential confounding factors. Lastly, when we repeated all our analyses based on  
217 individuals without missing data, our conclusions were largely unchanged for both non-cognitive  
218 (**Supplemental Table 1**) and cognitive outcomes (**Supplemental Table 2**).

219

## 220 **Discussion**

221 The main findings of this study were that a history of public care during childhood was  
222 associated with a broad range of negative outcomes in adulthood, most consistently  
223 socioeconomic factors and anti-social behaviour. That is, after multivariable adjustment and at  
224 conventional levels of statistical significance, public care was linked to half of the thirty  
225 endpoints featured in the present analyses, comprising 6/7 sociodemographic, 2/2 anti-social, 3/5  
226 psychological, 1/3 health behaviours, 2/8 somatic health, and 0/5 cognitive.

227

228 While these findings may be important given the pernicious nature of several of the outcomes in  
229 their own right, they may also offer insights into the observation that, relative to the general  
230 population and net of confounding, children who are exposure to care may experience up to three  
231 times the rate of premature mortality by middle-age.<sup>30-32</sup> This observation raises the question of  
232 how exposure to public care in childhood is embodied, in turn elevating mortality. In analyses of  
233 two cohort studies, we have recently shown little evidence of an association between pre-adult  
234 public care and various adult cardiovascular, inflammatory, neuroendocrine, and respiratory risk  
235 markers for mortality.<sup>33,34</sup> While the present results suggest that, instead, the impact of public  
236 care on death may be via social circumstances and potentially some indicators of health, our  
237 study sample is insufficiently mature to enable us to simultaneously run analyses in which we  
238 incorporate data on exposure, potential mediators, and mortality risk. In the only study of which

239 we are aware to have done so, indices of socio-economic position and mental health appear to  
240 have some explanatory role in the public care–mortality relationship.<sup>35</sup> Replication and testing  
241 using a wider range of potential mediating characteristics, such as somatic health, health  
242 behaviours and criminality as identified herein, is now required.

243

#### 244 *Comparison with existing studies*

245 Our results of a wide-ranging association of pre-adult care with outcomes in middle-age broadly  
246 accord with evidence from samples drawn from Scandinavia,<sup>8</sup> US,<sup>12</sup> and UK<sup>9</sup> populations  
247 followed earlier in the adult life course. Our findings also seem to corroborate those from cross-  
248 sectional studies including older-aged groups that relied on distant recall of early life care.<sup>9,11,12,14</sup>

249

250 In the present analyses, while childhood care was associated with a higher burden of mental  
251 health problems there were less consistent relationships with health behaviours and somatic  
252 health outcomes. Thus, our findings support analyses of data from the 1970 British birth cohort  
253 which found associations between care history and smoking, but not alcohol problems or  
254 physical exertion.<sup>36</sup> We did not find associations between care history and either high blood  
255 pressure or obesity, although these are not universal observations.<sup>13,14</sup>

256

257 To our knowledge, ours was the first study to explore the influence of being looked after in  
258 childhood on cognition in mid-life. With both care<sup>33</sup> and cognition<sup>37</sup> being strongly socially  
259 patterned, we anticipated that care would be related to lower cognitive performance but this was  
260 not the case – even after basic adjustment, the difference in performance on various tests of  
261 mental ability according to care status was marginal.

262  
263  
264  
265  
266  
267  
268  
269  
270  
271  
272  
273  
274  
275  
276  
277  
278  
279  
280  
281  
282  
283  
284

*Study strengths and limitations*

The strengths of our study include the well-characterised study participants, the prospective measurement of public care across childhood as opposed to distant recall in older age, and our use of an extensive range of outcomes which, unusually in the context of the present literature, allowed us to compare effects within a single population. Our study is of course not without several limitations. First, 59% of cohort members with care data took part in the resurvey at age 42 (51% at age 50 years), with, as shown, lower participation rates in individuals with such a history. Provided there was still sufficient variation in exposure and outcomes in the remaining study members, and given that our objective was to explore relationships as opposed to examining the prevalence of a given characteristic, attrition should not have impacted upon our findings.<sup>38,39</sup> Second, parents may provide a socially desirable response to an enquiry as revealing and sensitive as the public care history of their offspring. While we are unaware of any studies assessing the agreement of parental self-reported care with a gold standard such as administrative data, in preliminary findings from a meta-analysis of studies of childhood care exposure and adult mortality risk in which we compared the predictive value of care data as ascertained from parental report with electronic records across studies, we found that care data collected using each mode were associated with around a doubling of adult mortality rates in those with a history of care relative to those without.<sup>40</sup> This suggests similar predictive validity for self-reported and administrative data. Outcome data were also self-reported, on this occasion by the study members as opposed to parents, but many of these have been shown to sufficiently valid for the purposes of epidemiological investigation.

285 Third, vulnerable children and families are hard to reach in a research context, and it is likely  
286 that the present study will not capture data on people who experienced the more challenging of  
287 upbringings. For that, purposeful sampling of such groups would be required alongside  
288 unexposed children to facilitate comparison. Fourth, we were unable to examine potentially  
289 important care placement characteristics, including the impact of duration, type, reason, or  
290 stability. Fifth, although we attempted to take into account the early life circumstances of  
291 children experiencing care, it is not possible to completely separate the impact of the various  
292 adversities experienced prior to and during care. Finally, the public care system in the UK has  
293 evolved in the several decades since the present study members were children. Some changes,  
294 most obviously the establishment of the modern UK protection system in 1973, have seemingly  
295 improved the circumstances for this disadvantaged population such that they now receive  
296 intervention earlier and experience less placement instability.<sup>41</sup> While this raises the possibility  
297 that the apparent longer-term negative effects may be diminished for children in  
298 contemporaneous care, there is in fact evidence that more recent generations of children in foster  
299 care still experience subsequent adversity.<sup>13,42</sup>

300

### 301 *Public health implications and future research directions*

302 Taken together with the findings of other observational studies, there is growing evidence of risk  
303 in multiple domains across the adult life course for people exposure to childhood care. As with  
304 all potential population-based interventions, similarly consistent experimental evidence must  
305 now be accumulated in order to inform public policy. Our results and those of other groups are  
306 likely to be informative for the planning and implementation of trials, ideally randomised with  
307 control groups. Given the logistical and financial implications of such an endeavour, however,

308 quasi experimental studies which utilise changes in child protection legislation as an instrumental  
309 variable may also have value. In the meantime, practitioners in health and social care should  
310 perhaps more closely monitor care graduates.

311

### 312 *Conclusions*

313 This study adds to a growing body of evidence of the shorter-term negative impact of public care  
314 in childhood on a broad range of outcomes to suggest that many effects extend further into the  
315 adult life course than previously understood.

316

317 *Correspondence:* David Batty, Department of Epidemiology & Public Health, University  
318 College London, 1-19 Torrington Place, London, UK, WC1E 6BT. E. david.batty@ucl.ac.uk

319  
320 *Acknowledgements:* GDB is supported by the UK Medical Research Council (MR/P023444/1)  
321 and the US National Institute on Aging (1R56AG052519-01; 1R01AG052519-01A1). CdM was  
322 supported by the Swiss National Science Foundation when this work was initiated.

323  
324 *Conflict of interest:* None to declare.

325  
326 *Human participant protection:* Participant consent was obtained throughout the study from  
327 parents or caregivers, and, later, the study members themselves. The study was originally  
328 approved by the National Health Service Research Ethics Committee and latterly the Multicentre  
329 Research Ethics Committee.

330  
331 *Contributions:* Tiffany Xie analysed the data, interpreted the results, and jointly drafted the  
332 manuscript. Carlos de Mestral built the dataset, interpreted the results, and revised the  
333 manuscript. David Batty generated the idea for the study, formulated an analytical plan,  
334 interpreted the results, and jointly drafted the manuscript. All authors approved the final version  
335 of the manuscript.

336  
337 *Manuscript statistics:* 3341 words (excluding abstract 185 words), 42 references, 4 tables (2  
338 supplemental tables), 2 figures

339  
340

341 **References**

- 342
- 343 1. Galobardes B, Lynch JW, Davey Smith G. Childhood socioeconomic circumstances and  
344 cause-specific mortality in adulthood: systematic review and interpretation. *Epidemiologic*  
345 *reviews* 2004; **26**: 7-21.
- 346 2. Batty GD, Der G, MacIntyre S, Deary IJ. Does IQ explain socioeconomic inequalities in  
347 health? Evidence from a population based cohort study in the west of Scotland. *BMJ* 2006;  
348 **332**(7541): 580-4.
- 349 3. Hughes K, Bellis MA, Hardcastle KA, et al. The effect of multiple adverse childhood  
350 experiences on health: a systematic review and meta-analysis. *Lancet Public Health* 2017;  
351 **2**(8): e356-e66.
- 352 4. US Department of Health and Human Services - Children's Bureau. The Adoption and  
353 Foster Care Analysis and Reporting System Report No. 25 (<https://www.acf.hhs.gov/cb> -  
354 accessed January 20, 2019); 2018.
- 355 5. UK Department of Education. Children Looked after in England Including Adoption: 2017  
356 to 2018  
357 ([https://assets.publishing.service.gov.uk/government/uploads/system/uploads/attachment\\_da](https://assets.publishing.service.gov.uk/government/uploads/system/uploads/attachment_data/file/757922/Children_looked_after_in_England_2018_Text_revised.pdf)  
358 [ta/file/757922/Children looked after in England 2018 Text revised.pdf](https://assets.publishing.service.gov.uk/government/uploads/system/uploads/attachment_data/file/757922/Children_looked_after_in_England_2018_Text_revised.pdf) - accessed  
359 January 20, 2019.).
- 360 6. Vinnerljung B, Franzen E, Danielsson M. Teenage parenthood among child welfare clients:  
361 a Swedish national cohort study of prevalence and odds. *J Adolesc* 2007; **30**(1): 97-116.
- 362 7. Viner RM, Taylor B. Adult Health and Social Outcomes of Children Who Have Been in  
363 Public Care: Population-Based Study. *Pediatrics* 2005; **115**(4): 894-9.
- 364 8. Buchanan A, Ten Brinke J, Flouri E. Parental background, social disadvantage, public  
365 "care," and psychological problems in adolescence and adulthood. *J Am Acad Child Adolesc*  
366 *Psychiatry* 2000; **39**(11): 1415-23.
- 367 9. Dregan A, Gulliford MC. Foster care, residential care and public care placement patterns are  
368 associated with adult life trajectories: population-based cohort study. *Soc Psychiatry*  
369 *Psychiatr Epidemiol* 2012; **47**(9): 1517-26.
- 370 10. Cote SM, Orri M, Marttila M, Ristikari T. Out-of-home placement in early childhood and  
371 psychiatric diagnoses and criminal convictions in young adulthood: a population-based  
372 propensity score-matched study. *Lancet Child Adolesc Health* 2018; **2**(9): 647-53.
- 373 11. Teyhan A, Wijedasa D, Macleod JJBo. Adult psychosocial outcomes of men and women  
374 who were looked-after or adopted as children: prospective observational study. 2018; **8**(2):  
375 e019095.
- 376 12. Zlotnick C, Tam TW, Soman LA. Life course outcomes on mental and physical health: the  
377 impact of foster care on adulthood. *Am J Public Health* 2012; **102**(3): 534-40.
- 378 13. Ahrens KR, Garrison MM, Courtney ME. Health outcomes in young adults from foster care  
379 and economically diverse backgrounds. *Pediatrics* 2014; **134**(6): 1067-74.
- 380 14. Schneider R, Baumrind N, Pavao J, et al. What happens to youth removed from parental  
381 care?: Health and economic outcomes for women with a history of out-of-home placement.  
382 *Children and Youth Services Review* 2009; **31**(4): 440-4.
- 383 15. Brannstrom L, Forsman H, Vinnerljung B, Almquist YB. The truly disadvantaged? Midlife  
384 outcome dynamics of individuals with experiences of out-of-home care. *Child Abuse Negl*  
385 2017; **67**: 408-18.



- 386 16. Power C, Elliott J. Cohort profile: 1958 British birth cohort (National Child Development  
387 Study). *Int J Epidemiol* 2006; **35**(1): 34-41.
- 388 17. Batty GD, Ploubidis GB, Goodman A, Bann D. Association of nursery and early school  
389 attendance with later health behaviours, biomedical risk factors, and mortality: evidence  
390 from four decades of follow-up of participants in the 1958 birth cohort study. *J Epidemiol  
391 Community Health* 2018; **72**(7): 658-63.
- 392 18. von Elm E, Altman DG, Egger M, et al. The Strengthening the Reporting of Observational  
393 Studies in Epidemiology (STROBE) statement: guidelines for reporting observational  
394 studies. *Lancet* 2007; **370**(9596): 1453-7.
- 395 19. General R. The Registrar General's Decennial Supplement, England and Wales 1961,  
396 Occupational Mortality Tables. London: HMSO; 1971.
- 397 20. Clark C, Rodgers B, Caldwell T, Power C, Stansfeld S. Childhood and adulthood  
398 psychological ill health as predictors of midlife affective and anxiety disorders: the 1958  
399 British Birth Cohort. *Arch Gen Psychiatry* 2007; **64**(6): 668-78.
- 400 21. Stott DH, Sykes EG, Marston N. The social adjustment of children: manual of the British  
401 social-adjustment guides: Hodder & Stoughton; 1974.
- 402 22. Rutter M, Tizard J. Education, health and behaviour. London: Longman; 1970.
- 403 23. Rodgers B, Pickles A, Power C, Collishaw S, Maughan B. Validity of the Malaise Inventory  
404 in general population samples. *Soc Psychiatry Psychiatr Epidemiol* 1999; **34**(6): 333-41.
- 405 24. King M. At risk drinking among general practice attenders: validation of the CAGE  
406 questionnaire. *Psychol Med* 1986; **16**(1): 213-7.
- 407 25. Buchsbaum DG, Buchanan RG, Centor RM, Schnoll SH, Lawton MJ. Screening for alcohol  
408 abuse using CAGE scores and likelihood ratios. *Ann Intern Med* 1991; **115**(10): 774-7.
- 409 26. Batty GD, Hunt K, Emslie C, Lewars H, Gale CR. Alcohol problems and all-cause mortality  
410 in men and women: predictive capacity of a clinical screening tool in a 21-year follow-up of  
411 a large, UK-wide, general population-based survey. *J Psychosom Res* 2009; **66**(4): 317-21.
- 412 27. Winning A, McCormick MC, Glymour MM, Gilsanz P, Kubzansky LD. Childhood  
413 Psychological Distress and Healthy Cardiovascular Lifestyle 17-35 Years Later: The  
414 Potential Role of Mental Health in Primordial Prevention. *Ann Behav Med* 2018; **52**(8): 621-  
415 32.
- 416 28. Organization WH. Obesity: Preventing and Managing the Global Epidemic (Technical  
417 Report Series 894). Geneva: WHO; 2000.
- 418 29. Bowling A, Pikhartova J, Dodgeon B. Is mid-life social participation associated with  
419 cognitive function at age 50? Results from the British National Child Development Study  
420 (NCDS). *BMC Psychol* 2016; **4**(1): 58.
- 421 30. Gao M, Brannstrom L, Almquist YB. Exposure to out-of-home care in childhood and adult  
422 all-cause mortality: a cohort study. *Int J Epidemiol* 2017; **46**(3): 1010-7.
- 423 31. Kalland M, Pensola TH, Merilainen J, Sinkkonen J. Mortality in children registered in the  
424 Finnish child welfare registry: population based study. *Bmj* 2001; **323**(7306): 207-8.
- 425 32. Vinnerljung B, Ribe MJJoSW. Mortality after care among young adult foster children in  
426 Sweden. 2001; **10**(3): 164-73.
- 427 33. de Mestral C, Bell S, Hamer M, Batty GD. Out-of-home care in childhood and biomedical  
428 risk factors in middle-age: National birth cohort study. *Am J Hum Biol* 2019; e23343.
- 429 34. Batty GD, Hamer M. Public care during childhood and biomedical risk factors in middle-age:  
430 the 1970 birth cohort study. *Am J Epidemiol* In press.

- 431 35. Almquist YB, Brannstrom L. Do trajectories of economic, work- and health-related  
432 disadvantages explain child welfare clients' increased mortality risk? A prospective cohort  
433 study. *BMC Public Health* 2019; **19**(1): 418.
- 434 36. Dregan A, Brown J, Armstrong D. Do adult emotional and behavioural outcomes vary as a  
435 function of diverse childhood experiences of the public care system? *Psychol Med* 2011;  
436 **41**(10): 2213-20.
- 437 37. Neisser U, Boodoo G, Bouchard Jnr T, et al. Intelligence: knowns and unknowns. *Am*  
438 *Psychol* 1996; **51**: 77-101.
- 439 38. Batty GD, Shipley M, Tabak A, et al. Generalizability of occupational cohort study findings.  
440 *Epidemiology* 2014; **25**(6): 932-3.
- 441 39. Batty GD, Gale CR. Impact of resurvey non-response on the associations between baseline  
442 risk factors and cardiovascular disease mortality: prospective cohort study. *J Epidemiol*  
443 *Community Health* 2009; **63**(11): 952-5.
- 444 40. de Mestral C, Bell S, Batty GD. Public care in childhood, risk factors in adulthood, and  
445 mortality: a pooled data from two birth cohorts (Parallel sessions - A6\_1,  
446 <https://sphc.ch/de/vergangene-konferenzen/sphc-2018/sessions/>). Swiss Public Health  
447 Conference 2018; Neuchatel, Switzerland; 2018.
- 448 41. Mc Grath-Lone L, Dearden L, Nasim B, Harron K, Gilbert R. Changes in first entry to out-  
449 of-home care from 1992 to 2012 among children in England. *Child Abuse Negl* 2016; **51**:  
450 163-71.
- 451 42. Pecora PJ, Kessler RC, O'Brien K, et al. Educational and employment outcomes of adults  
452 formerly placed in foster care: Results from the Northwest Foster Care Alumni Study.  
453 *Children and youth services review* 2006; **28**(12): 1459-81.  
454  
455  
456

457 **Table 1. Early life characteristics of study members according to history of childhood care,**  
 458 **1958 Birth Cohort Study**  
 459

	<b>No history of care (N = 10,740)</b>	<b>History of care (N = 420)</b>	<b>p-value for difference</b>
<b>Child characteristics</b>	<b>N (%)</b>	<b>N (%)</b>	
Female	5440 (50.65)	218 (51.90)	0.614
Overcrowding	1337 (14.36)	97 (30.22)	<0.001
Hospital visit	1109 (11.68)	58 (16.52)	0.006
Disabled	1076 (10.79)	56 (14.21)	0.033
High internalizing symptoms	1794 (18.49)	99 (27.05)	<0.001
High externalizing symptoms	1956 (20.16)	137 (37.43)	<0.001
<b>Family characteristics</b>			
Father manual social class	7198 (70.95)	327 (86.05)	<0.001
Mother's age at birth (mean, SD)	27.56 (5.64)	26.17 (5.92)	<0.0001
Mother married	9959 (97.32)	314 (78.11)	<0.001
Low maternal education	7517 (73.65)	333 (83.25)	<0.001

460  
 461 Overcrowding was denoted by 6 or more persons in the household. High internalising symptoms were defined by a  
 462 score of 6 or more, while 5 or more was used for high externalising symptoms. Lower level maternal education was  
 463 leaving school before minimum age.  
 464  
 465

**Table 2. Association of care in childhood with sociodemographic, anti-social, and psychological outcomes at age 42 years, 1958 Birth Cohort Study**

	Sex-adjusted		Sociodemographic-adjusted		Health-adjusted	
	OR (95% CI)	N	OR (95% CI)	N	OR (95% CI)	N
<b>Sociodemographic</b>						
Manual social class	2.14 (1.75, 2.62)	11139	1.60 (1.25, 2.05)	9251	1.89 (1.51, 2.38)	9565
Unemployed	2.49 (1.57, 3.93)	11126	1.62 (0.86, 3.07)	9249	1.78 (1.01, 3.11)	9565
Social benefits	2.65 (2.08, 3.37)	11096	2.41 (1.80, 3.23)	9222	2.39 (1.82, 3.14)	9539
Secondary education or less	2.11 (1.64, 2.73)	11786	1.43 (1.03, 1.99)	8614	1.86 (1.36, 2.53)	8884
Living alone	1.66 (1.23, 2.25)	11125	1.63 (1.14, 2.35)	9245	1.58 (1.13, 2.20)	9557
Never married	1.16 (0.83, 1.61)	11102	1.01 (0.67, 1.52)	9228	1.02 (0.70, 1.48)	9539
Homelessness	2.18 (1.60, 2.99)	10569	2.23 (1.54, 3.24)	8800	2.00 (1.40, 2.85)	9089
<b>Anti-social</b>						
Illegal drugs	2.32 (1.51, 3.57)	11009	2.14 (1.26, 3.64)	9158	2.27 (1.41, 3.64)	9471
Criminal conviction	2.15 (1.59, 2.91)	11020	1.64 (1.13, 2.38)	9167	1.71 (1.22, 2.40)	9481
<b>Psychological</b>						
Psychological distress	1.85 (1.48, 2.32)	11008	1.64 (1.25, 2.16)	9157	1.85 (1.45, 2.37)	9470
Specialist care for depression	2.49 (1.74, 3.55)	11036	1.82 (1.13, 2.93)	9180	2.24 (1.49, 3.36)	9493
Alcohol problems	1.47 (1.13, 1.91)	10961	1.10 (0.78, 1.53)	9130	1.37 (1.02, 1.85)	9438

OR, odds ratio. Sociodemographic-adjusted odds ratios are adjusted for sex plus parental social class, mother's age at birth, mother's marital status, mother's education, and high number of people in household. Health-adjusted odds ratios are adjusted for sex plus childhood hospitalizations, childhood disability, and internalizing and externalizing symptoms.

**Table 3. Association of care in childhood with health behaviours and somatic health outcomes at age 42 years, 1958 Birth Cohort Study**

	Sex-adjusted		Sociodemographic-adjusted		Health-adjusted	
	OR (95% CI)	N	OR (95% CI)	N	OR (95% CI)	N
<b>Health behaviours</b>						
Daily smoker	2.49 (2.04, 3.03)	11119	1.77 (1.39, 2.25)	9244	2.36 (1.89, 2.95)	9560
Heavy alcohol use	1.47 (0.89, 2.43)	11147	1.19 (0.63, 2.25)	9258	1.16 (0.63, 2.15)	9571
Physically inactive	0.92 (0.75, 1.11)	11116	0.95 (0.75, 1.20)	9242	0.89 (0.72, 1.12)	9558
<b>Somatic health</b>						
Obese	0.94 (0.71, 1.25)	11160	0.77 (0.54, 1.08)	9266	0.92 (0.67, 1.25)	9581
Diabetes	0.69 (0.28, 1.68)	11120	0.44 (0.14, 1.42)	9244	0.62 (0.23, 1.70)	9560
High blood pressure	1.12 (0.84, 1.51)	11116	1.28 (0.91, 1.80)	9240	1.16 (0.84, 1.61)	9556
Disabled	3.55 (2.72, 4.62)	11160	2.98 (2.16, 4.11)	9266	3.06 (2.25, 4.16)	9581
Hospital admission	1.10 (0.90, 1.36)	11115	1.18 (0.92, 1.50)	9240	1.20 (0.95, 1.50)	9557
Accident	1.33 (1.09, 1.63)	11132	1.27 (0.99, 1.62)	9252	1.14 (0.91, 1.43)	9570
Any cancer type	1.71 (1.02, 2.86)	11120	1.57 (0.83, 2.97)	9244	1.86 (1.06, 3.24)	9560
Poor general health	1.68 (1.34, 2.10)	11119	1.43 (1.09, 1.88)	9243	1.66 (1.29, 2.12)	9559

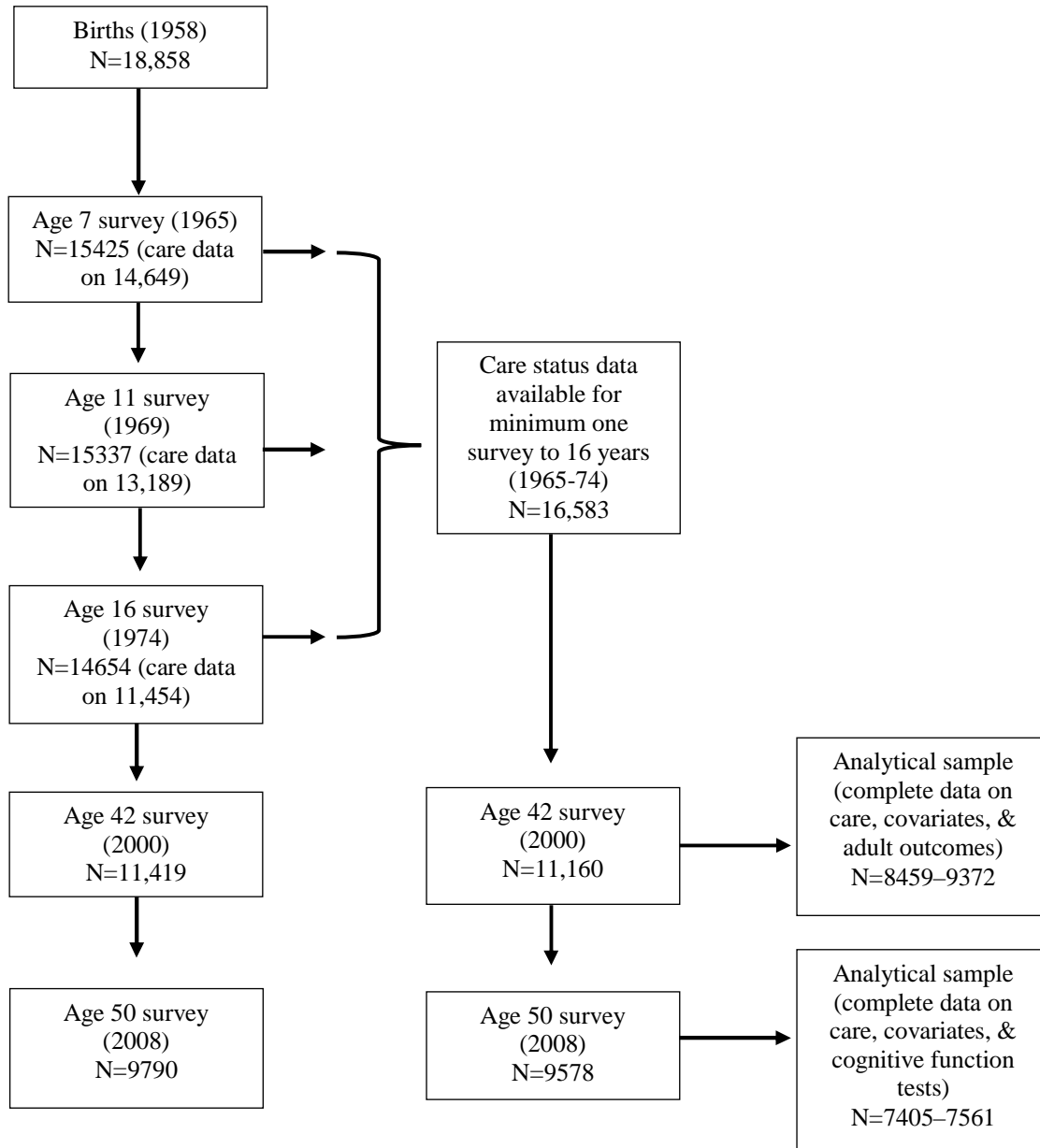
OR, odds ratio. Sociodemographic-adjusted odds ratios are adjusted for sex plus parental social class, mother's age at birth, mother's marital status, mother's education, and high number of people in household. Health-adjusted odds ratios are adjusted for sex plus childhood hospitalizations, childhood disability, and internalizing and externalizing symptoms.

**Table 4. Association of care in childhood with cognitive function at age 50 y, 1958 Birth Cohort Study**

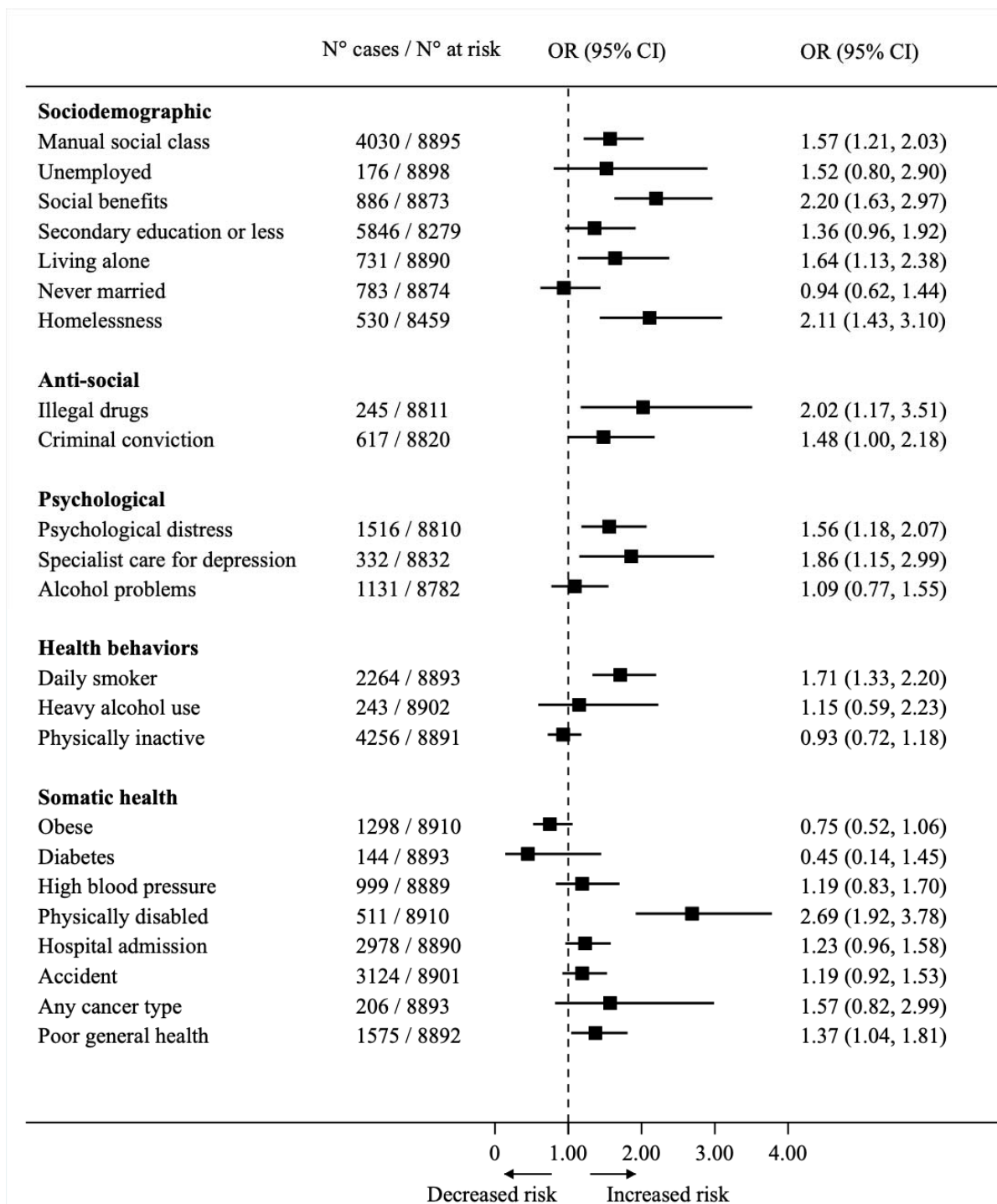
	No history of care	History of Care	Sex-adjusted		Sociodemographic-adjusted		Health-adjusted		Multiply-adjusted	
	Mean (SD)	Mean (SD)	B (95% CI)	N	B (95% CI)	N	B (95% CI)	N	B (95% CI)	N
Letter Cancellation Accuracy	21.65 (5.87)	20.90 (6.50)	-0.81 (-1.45, -0.16)	9243	-0.89 (-1.67, -0.10)	7705	-0.75 (-1.48, -0.02)	7953	-0.83 (-1.64, -0.03)	7405
Letter Cancellation Speed	334.39 (88.41)	330.01 (98.33)	-5.1 (-14.79, 4.59)	9243	-8.25 (-20.08, 3.58)	7705	-6.13 (-17.18, 4.92)	7953	-9.28 (-21.49, 2.93)	7405
Animal Naming	22.29 (6.29)	21.41 (6.51)	-0.88 (-1.57, -0.20)	9444	0.06 (-0.76, 0.87)	7870	-0.53 (-1.29, 0.23)	8120	0.23 (-0.60, 1.07)	7561
Word Recall Immediate	6.56 (1.49)	6.23 (1.47)	-0.33 (-0.49, -0.17)	9444	-0.17 (-0.36, 0.03)	7870	-0.20 (-0.38, -0.02)	8120	-0.12 (-0.32, 0.08)	7561
Word Recall Delayed	5.43 (1.84)	5.01 (1.88)	-0.43 (-0.63, -0.24)	9388	-0.22 (-0.46, 0.02)	7823	-0.29 (-0.51, -0.07)	8071	-0.15 (-0.39, 0.10)	7514

B, beta coefficient. Sociodemographic-adjusted odds ratios are adjusted for sex plus parental social class, mother's age at birth, mother's marital status, mother's education, and high number of people in household. Health-adjusted odds ratios are adjusted for sex plus childhood hospitalizations, childhood disability, and internalizing and externalizing symptoms. Multiply-adjusted odds ratios are adjusted for all these covariates.

**Figure 1. Flow of study members through phases of data collection into the present analytical sample, 1958 Birth Cohort Study**



**Figure 2. Multivariable adjusted association between care in childhood and outcomes at age 42 years, 1958 Birth Cohort Study**



Multiply-adjusted odds ratios (OR) and 95% confidence intervals (CI) are adjusted for the following early life factors: sex, parental social class, mother's age at birth, mother's marital status, mother's education, high number of people in household, childhood hospitalizations, childhood disability, and internalizing and externalizing symptoms.