

Title Page

Clinical findings in critically ill patients infected with SARS-CoV-2 in Guangdong Province,

China: a multi-center, retrospective, observational study

Yonghao Xu^{#1}, Zhiheng Xu^{#1}, Xuesong Liu^{#1}, Lihua Cai^{#2}, Haichong Zheng¹, Yongbo Huang¹,
Lixin Zhou³, Linxi Huang⁴, Yun Lin⁵, Liehua Deng⁶, Jianwei Li⁷, Sibe Chen¹, Dongdong Liu¹,
Zhimin Lin¹, Liang Zhou¹, Weiquan He¹, Xiaoqing Liu^{*1}, Yimin Li^{*1}

[#]These authors contributed equally to this work.

Institution

1 State Key Laboratory of Respiratory Diseases, Guangzhou Institute of Respiratory Health, First
Affiliated Hospital of Guangzhou Medical University, Department of Intensive Care

2 Dongguan People's Hospital, Department of Intensive Care

3 Foshan First People's Hospital, Department of Intensive Care

4 The First Affiliated Hospital of Shantou University Medical College, Department of Intensive
Care

5 Huizhou Municipal Central Hospital, Department of Intensive Care

6 Affiliated Hospital of Guangdong Medical University, Department of Intensive Care

7 Zhongshan City People's Hospital, Department of Intensive Care

Corresponding authors:

Dr. Xiaoqing Liu

Department of Intensive Care,

First Affiliated Hospital of Guangzhou Medical University,

Guangzhou Institute of Respiratory Health,

State Key Laboratory of Respiratory Diseases

Telephone: +86(20)83062961

Email: lxq1118@126.com

Dr. Yimin Li

Department of Intensive Care,

First Affiliated Hospital of Guangzhou Medical University,

Guangzhou Institute of Respiratory Health,

State Key Laboratory of Respiratory Diseases

Telephone: +86(20)83062961

Email: dryiminli@vip.163.com

Conflicts of interest: None

Funding

The study was funded by the National Science and Technology Major Project (No. 2017ZX10204401), National Natural Science Foundation of China (81970071), the Special Project for Emergency of the Ministry of Science and Technology (2020YFC0841300), the Special Project of Guangdong Science and Technology Department (2020B111105001).

Abstract

Background In December 2019, human infection with a novel coronavirus, known as SARS-CoV-2, was identified in Wuhan, China. The mortality of critical illness was high in Wuhan. Information about critically ill patients with SARS-CoV-2 infection outside of Wuhan is scarce. We aimed to provide the clinical features, treatment, and prognosis of the critically ill patients with SARS-CoV-2 infection in Guangdong Province.

Methods In this multi-centered, retrospective, observational study, we enrolled critically ill patients with SARS-CoV-2 pneumonia who were admitted to the intensive care unit (ICU) in Guangdong Province. Demographic data, symptoms, laboratory findings, comorbidities, treatments, and prognosis were collected. Data were compared between patients with and without intubation.

Results Forty-five critically ill patients with SARS-CoV-2 pneumonia were identified in 7 ICUs in Guangdong Province. The mean age was 56.7 years, and 29 patients (64.4%) were men. The most common symptoms at the onset of illness were high fever and cough. Majority of patients presented with lymphopenia and elevated lactate dehydrogenase. Treatment with antiviral drugs was initiated in all the patients. Thirty-seven patients (82.2%) had developed acute respiratory distress syndrome, and 13 (28.9%) septic shock. A total of 20 (44.4%) patients required intubation and 9 (20%) required extracorporeal membrane oxygenation. As of February 28th 2020, only one patient (2.2%) had died and half of them had discharged of ICU.

Conclusions Infection with SARS-CoV-2 in critical illness is characterized by fever, lymphopenia, acute respiratory failure and multiple organ dysfunction. Compared with critically ill patients infected with SARS-CoV-2 in Wuhan, the mortality of critically ill patients in Guangdong Province was relatively low. These data provide some general understandings and experience for the critical patients with SARS-CoV-2 outside of Wuhan.

Keywords: Critically ill patients, SARS-CoV-2, COVID-19, infection

Introduction

In December 2019, human infection with a novel coronavirus, known as SARS-CoV-2, was confirmed in Wuhan, China, which had spread rapidly through outside of Wuhan and around the world (1, 2). As of February 28, 2020, a total number of 79,251 patients has been infected in the mainland of China, with 2,835 (3.58%) deaths according to Chinese Center for Disease Control and Prevention (CCDC) report. Previous studies have mainly focus on the general epidemiological findings, clinical presentation, and clinical outcomes of mild and moderated patients with SARS-CoV-2 pneumonia (3-5). Only a recent study had reported the characteristics of critically ill patients in a single center in Wuhan with 61.5% mortality (6). However, the clinical characteristics of critically ill patients in the intensive care unit (ICU) outside of Wuhan have not been described, especially in Guangdong Province, where by February 28, 2020 more than 1000 people were confirmed having coronavirus disease 2019 (COVID-19). Here, we describe the characteristics and treatment of critically ill patients with COVID-19 in Guangdong Province.

Methods

Study design

This multi-center, retrospective, observational study was designed and conducted by the First Affiliated Hospital of Guangzhou Medical University. There were seven hospitals involved, including the First Affiliated Hospital of Guangzhou Medical University, Dongguan People's Hospital, Foshan First People's Hospital, the First Affiliated Hospital of Shantou University Medical College, the Affiliated Hospital of Guangdong Medical University, Huizhou Municipal Central Hospital, Zhongshan City People's Hospital. The study was approved by the Ethics Commission of the First Affiliated Hospital of Guangzhou Medical University. The informed-consent requirement was waived because the study was an observational study and because of the quarantine of the family members.

Patients

The patients were all confirmed with SARS-CoV-2 infection by real-time polymerase-chain-reaction testing of their throat swab specimens. Critically ill patients were defined as those required oxygen therapy to maintain peripheral capillary oxygen saturation (SpO_2) > 92% or PaO_2/FiO_2 ratio > 300 mmHg, symptoms of respiratory distress (including

tachypnea > 22 breaths/min, labored breathing, use of intercostal muscles, and/or dyspnea at rest) or required mechanical ventilation (6-9). For the enrolled patients, their living status, intubation, weaning and ICU, hospital discharge date was confirmed on February 28, 2020.

Data collection

Medical records of critically ill patients in ICU were extracted and sent to the data collection center in the First Affiliated Hospital of Guangzhou Medical University. A team of ICU doctors who had been treating patients with COVID-19 collected and reviewed the data. If information was not clear, the central working group contacted the doctor responsible for the treatment of the patient for clarification. Information recorded included demographic data, underlying conditions, symptoms, and laboratory and chest radiograph findings, comorbidities, intubation rates, ventilator settings prior to and during ICU therapy.

Definition

Incidence of SARS-CoV-2 related comorbidities were identified, including acute respiratory distress syndrome (ARDS), sepsis shock, cardiac injury, acute kidney injury (AKI), liver dysfunction and gastrointestinal haemorrhage. ARDS was diagnosed according Berlin definition (10) and sepsis shock was identified by Sepsis-3 definition (11). AKI was identified on the basis and elevated of serum creatinine (12). Cardiac injury was recognized by increased cardiac troponin I or electrocardiography abnormalities of nonspecific ST-T wave (13, 14). Liver dysfunction was defined by aspartate aminotransferase or alanine aminotransferase greater than 40 U/L (15). Gastrointestinal haemorrhage was identified by a positive fecal or gastric juice occult blood test (16).

Statistics

Continuous variables were presented as either mean \pm standard deviation (SD) or median with interquartile range (IQR), in accordance with either normal or non-normal distributions. For categorical variables, the frequency and percentage of patients in each category were calculated. The differences were assessed between intubated and non-intubated patients with two-sample t test or Wilcoxon rank-sum test depending on parametric or nonparametric data for continuous variables and Chi-square test for categorical variables. Spearman correlation coefficient was used to test the correlations between clinical variables. All analyses were performed using SPSS 23.0

(SPSS Inc., Chicago, IL, USA). A P value < 0.05 (two-sided) was considered statistically significant.

Results

Demographic, Epidemiologic, and Baseline Characteristics of the Patients

A total of 45 critically ill patients were identified with SARS-CoV-2 infections, the first case included was confirmed on January 14, 2020, and the last one was confirmed on February 20, 2020. All patients had positive throat swabs of SARS-CoV-2 and bilateral infiltrates on chest radiographs (Figure 1) and were admitted to ICUs.

The mean age of the patients was 56.7 years (SD, 15.4); 29 (64.4%) were men. A total of 26 (57.8%) patients had at least one preexisting conditions, including hypertension (46.7%) and diabetes (28.9%). Thirty six patients had a history of exposure to Hubei Province and 26 (57.8%) had exposure to patients with confirmed with SARS-CoV-2 infection. Moreover, 19 (42.2%) patients had exposure to a familial cluster.

Clinical Characteristics and Laboratory Findings

The most common symptoms were fever (86.7%), cough (71.1%) and dyspnoea (64.4%). The median time from onset of symptoms to ICU admission was 10 (IQR, 8-13) days. The median Acute Physiology and Chronic Health Evaluation II (APACHE II) and Sequential Organ Failure Assessment (SOFA) score of all patients at ICU admission was 14(8-18) and 4.0 (3.0-6.8), respectively. A total of 20 patients (44.4%) was intubated within 3 days after ICU admission (table 2).

White cell counts was at a normal range with predominantly neutrophils in intubated patients. There were 41 patients (91.1%) presented with lymphopenia (lymphocyte < $1.0 \times 10^9/L$). Compared with non-intubated patients, those intubated showed significant decrease in lymphocyte ($p < 0.001$). Elevated levels of lactate dehydrogenase (LDH) (normal range, 109-255 U/L) were observed in 32 of the patients (71.1%). Moreover, intubated patients had higher levels of LDH than those without intubation ($p = 0.0012$). Spearman correlation analyses showed that SOFA score were negatively correlated with lymphocyte count and positively associated with LDH (Spearman's rho= -0.57 and 0.51, respectively, $P < 0.001$) (Figure 2). In addition, prothrombin time, troponin I, creatine kinase, serum creatinine, aspartate aminotransferase, lactate, procalcitonin and

potassium were significant increase in patients with intubation, while $\text{PaO}_2/\text{FiO}_2$ ratio, haemoglobin and platelet count in intubated patients was lower than those without intubation (Table 2).

Most patients had organ function damage, including 37 (82.2%) with ARDS, 13 (29.9) with septic shock, 7 (15.6%) with acute kidney injury, 10 (22.2%) with cardiac injury, 17 (37.8%) with liver dysfunction, 14 (31.1%) with gastrointestinal haemorrhage and 3 (6.7%) with barotrauma. Secondary infections, including bacterial co-infection and fungal co-infection, were identified in 17 (37.8%) and 12 (26.7%) patients, respectively (table 3).

Treatment in ICU

All patients received antiviral and antibacterial therapy. Antifungal agents were given to 19 (42.2%) patients. A total of 21 (46.7%) patients had received glucocorticoids, 28 (62.2%) with immunoglobulin and 35 (77.8%) with albumin. Further, convalescent plasma was applied in 6 (13.3%) critically ill patients.

There were 13 (28.9%) patients treated with high-flow nasal cannula, 6 (13.3%) with non-invasive mechanical ventilation, 20 (44.4%) with invasive mechanical ventilation. For patients with intubation, tidal volumes of 7.0 mL/kg predicted body weight was applied in accordance with lung protective ventilation strategy (17). Recruitment maneuvers were administered in 6 patients (13.3%). A total of 5 patients (11.1%) received prone position ventilation. In addition, extracorporeal membrane oxygenation (ECMO) and continuous renal replacement therapy (CRRT) was applied in 9 (20.0%) and 4 (8.9%) patients, respectively. There were 15 (33.3%) patients administrated with vasoconstrictive agents, 19 (42.2%) with sedation and analgesia and 8 (17.8%) with neuromuscular blocking agents (table 4).

Clinical Outcomes

As of February 28, 2020, one patient had died. Seven patients were successfully weaned from invasive ventilation. A total of 23 patients (51.1%) have discharged from ICU. Moreover, 11 patients (24.4%) have been recovered and discharged from hospital (table 4).

In order to identify the potential risks for intubation in severe patients with SARS-CoV-2 infection, Chi-square test showed that older (age ≥ 60 years), higher SOFA (≥ 4), APACHE II (≥ 15) score and LDH ($\geq 255\text{U/L}$) and lower lymphocyte ($\leq 0.8 \times 10^9/\text{L}$) at ICU admission were at high risks for intubation.

Discussion

The study presented a multi-center cohort of 45 patients admitted to ICUs for SARS-CoV-2 infection out of Wuhan. The findings showed that the majority of the patients were seriously ill at ICU admission. Of all included patients, 37 (82.2%) had developed ARDS, 20 (44.4%) required invasive mechanical ventilation and 9 (20.0%) required ECMO, suggesting that the SARS-CoV-2 can cause severe illness.

Our study population might represent most of the clinical characteristics of patients with SARS-CoV-2 infection. Lymphocytopenia occurred in more than 90% of critically ill patients, which was similar in Wuhan cohort (6). Moreover, we found that intubated patients had significantly lower lymphocyte counts than without intubation. Chi-square test had shown lower lymphocyte counts was more likely to be at high risk for intubation. Spearman correlation analyses showed that lymphocyte count was significantly negatively correlated with SOFA score at ICU admission. In fact, lymphocytopenia was common in viral pneumonia, particular in severe acute respiratory syndrome (SARS) and Middle East respiratory syndrome (MERS) (18, 19). It was reported that lymphocyte $< 0.8 \times 10^9/L$ was an independent risk factor for 90-day mortality of viral pneumonia (20). Therefore, lymphocytopenia may reflect the severity of SARS-CoV-2 infection. Dynamic monitoring lymphocyte would be of clinical benefit for intensive caring the critical illness.

Although antiviral drugs, including oseltamivir and ribavirin had been applied to our patients, to date no effective antiviral to treat COVID-19 has been identified. The current approach to clinical management is general supportive care supplemented with critical care and organ support when necessary. It has been suggested that the administration of high-titer anti-influenza immune plasma derived from convalescent or immunized individuals may be clinically beneficial for the treatment of SARS, MERS and seasonal influenza (21-23). Convalescent plasma was a potential treatment in coronavirus infection and suggested using in COVID-19 (24). Therefore, convalescent plasma of COVID-19 was applied in 6 patients (13.3%) and no transfusion reactions occurred in our cohort. However, according to our data, at this point, our findings could not

provide valuable information in the efficacy of convalescent plasma in critically ill patients with SARS-CoV-2 infection due to limited sample sizes, short time observation and lack of randomized controlled group. Thus, treatment of current outbreak of SARS-CoV-2 infection, particular in critical illness, via convalescent plasma should be carefully considered before well-designed clinical trials are conducted.

According to Berlin definition, a total of 37 (82.2%) patients had developed ARDS. The respiratory distress and hypoxemia were difficult to treat with an overall hospital mortality of 46.1% in severe ARDS according Lung Safe Study (25). In our cohort, 20 patients (44.4%) received invasive mechanical ventilation. Recruitment maneuvers, prone position ventilation, CRRT and ECMO were also applied for management of ARDS. In addition, many of our patients developed extrapulmonary organ dysfunction including sepsis shock, acute liver dysfunction, and acute renal injury. As of February 28, 2020, the mortality of our critically ill cases of COVID-19 were 2.2% (1 of 45) in our cohort, which was lower than those (61.5%, 32 of 52) in Wuhan. The outbreak of SARS-CoV-2 led to more than 65,000 infected patients in Wuhan (CCDC report on February 28, 2020). The massive influx of patients, inadequately protective clothing and medical personnel, particularly in critical care resources, may account for the unacceptable high mortality in Wuhan. In contrast, protective clothing and medical personnel could cover the relative less patients in Guangdong Province. In addition, a well design Web-based video consultation system for critically ill patients with COVID-19 was established and applied across different cities in Guangdong Province. Then specialists in critical care medicine could share their experience and help the management of the critical illness in a remote way across hospitals and cities. Moreover, aggressive treatments and intensive care were applied for the severe patients, including convalescent plasma, invasive mechanical ventilation, CRRT, ECMO. Therefore, the mortality was relatively lower in critically ill patients with SARS-CoV-2 infection in Guangdong Province.

Limitation

Our study has several limitations. Firstly, only 45 critically ill patients with COVID-19 were included from Guangdong Province. It might be that more clinical features related to those critically illness will be identified, if other provinces get involved. Secondly, at the time of study submission, half of the patients had not been discharged from ICU, so we are unable to estimate either ICU stay, ventilation free day, the case fatality rate or the predictors of fatality.

Conclusions

Compared with the ICU mortality of patients with SARS-Cov-2 infection in Wuhan, those of patients from Guangdong Province in our study had lower mortality (1 of 45, 2.2%). Currently, it is necessary for intensively supporting and carefully monitoring of the critical illness before effective drugs and vaccines to be developed against SARS-Cov-2 infection.

Reference

1. Hui DS, I Azhar E, Madani TA, Ntoumi F, Kock R, Dar O, et al. The continuing 2019-nCoV epidemic threat of novel coronaviruses to global health - The latest 2019 novel coronavirus outbreak in Wuhan, China. *International journal of infectious diseases : IJID : official publication of the International Society for Infectious Diseases*. 2020;91:264-6.
2. Zhu N, Zhang D, Wang W, Li X, Yang B, Song J, et al. A Novel Coronavirus from Patients with Pneumonia in China, 2019. *The New England journal of medicine*. 2020;10.1056/NEJMoa2001017.
3. Chen N, Zhou M, Dong X, Qu J, Gong F, Han Y, et al. Epidemiological and clinical characteristics of 99 cases of 2019 novel coronavirus pneumonia in Wuhan, China: a descriptive study. *Lancet (London, England)*. 2020:S0140-6736(20)30211-7.
4. Huang C, Wang Y, Li X, Ren L, Zhao J, Hu Y, et al. Clinical features of patients infected with 2019 novel coronavirus in Wuhan, China. *Lancet (London, England)*. 2020;395(10223):497-506.
5. Wang D, Hu B, Hu C, Zhu F, Liu X, Zhang J, et al. Clinical Characteristics of 138 Hospitalized Patients With 2019 Novel Coronavirus-Infected Pneumonia in Wuhan, China. *JAMA*. 2020;10.1001/jama.2020.1585.
6. Yang X, Yu Y, Xu J, Shu H, Xia Ja, Liu H, et al. Clinical course and outcomes of critically ill patients with SARS-CoV-2 pneumonia in Wuhan, China: a single-centered, retrospective, observational study. *The Lancet Respiratory Medicine*. 2020.
7. Domínguez-Cherit G, Lapinsky SE, Macias AE, Pinto R, Espinosa-Perez L, de la Torre A, et al. Critically Ill patients with 2009 influenza A(H1N1) in Mexico. *JAMA*. 2009;302(17):1880-7.
8. Fowler RA, Lapinsky SE, Hallett D, Detsky AS, Sibbald WJ, Slutsky AS, et al. Critically ill patients with severe acute respiratory syndrome. *JAMA*. 2003;290(3):367-73.
9. Xu Z, Li Y, Zhou J, Li X, Huang Y, Liu X, et al. High-flow nasal cannula in adults with acute respiratory failure and after extubation: a systematic review and meta-analysis. *Respir Res*. 2018;19(1):202.
10. Force ADT, Ranieri VM, Rubenfeld GD, Thompson BT, Ferguson ND, Caldwell E, et al. Acute respiratory distress syndrome: the Berlin Definition. *JAMA*. 2012;307(23):2526-33.
11. Singer M, Deutschman CS, Seymour CW, Shankar-Hari M, Annane D, Bauer M, et al. The Third International Consensus Definitions for Sepsis and Septic Shock (Sepsis-3). *Jama*. 2016;315(8):801-10.
12. Kellum JA, Lameire N. Diagnosis, evaluation, and management of acute kidney injury: a KDIGO summary (Part 1). *Crit Care*. 2013;17(1):204.

13. Wang J, Xu H, Yang X, Zhao D, Liu S, Sun X, et al. Cardiac complications associated with the influenza viruses A subtype H7N9 or pandemic H1N1 in critically ill patients under intensive care. *Braz J Infect Dis.* 2017;21(1):12-8.
14. Ito T, Akamatsu K, Ukimura A, Fujisaka T, Ozeki M, Kanzaki Y, et al. The Prevalence and Findings of Subclinical Influenza-associated Cardiac Abnormalities among Japanese Patients. *Intern Med.* 2018;57(13):1819-26.
15. Yang Y, Guo F, Zhao W, Gu Q, Huang M, Cao Q, et al. Novel avian-origin influenza A (H7N9) in critically ill patients in China*. *Crit Care Med.* 2015;43(2):339-45.
16. Schuster DP, Rowley H, Feinstein S, McGue MK, Zuckerman GR. Prospective evaluation of the risk of upper gastrointestinal bleeding after admission to a medical intensive care unit. *Am J Med.* 1984;76(4):623-30.
17. Acute Respiratory Distress Syndrome N, Brower RG, Matthay MA, Morris A, Schoenfeld D, Thompson BT, et al. Ventilation with lower tidal volumes as compared with traditional tidal volumes for acute lung injury and the acute respiratory distress syndrome. *The New England journal of medicine.* 2000;342(18):1301-8.
18. Ko J-H, Park GE, Lee JY, Lee JY, Cho SY, Ha YE, et al. Predictive factors for pneumonia development and progression to respiratory failure in MERS-CoV infected patients. *Journal of Infection.* 2016;73(5):468-75.
19. O'Donnell R, Tasker RC, Roe MF. SARS: understanding the coronavirus: apoptosis may explain lymphopenia of SARS. *Bmj.* 2003;327(7415):620.
20. Guo L, Wei D, Zhang X, Wu Y, Li Q, Zhou M, et al. Clinical Features Predicting Mortality Risk in Patients With Viral Pneumonia: The MuLBSTA Score. *Front Microbiol.* 2019;10:2752.
21. Hung IF, To KK, Lee C-K, Lee K-L, Chan K, Yan W-W, et al. Convalescent plasma treatment reduced mortality in patients with severe pandemic influenza A (H1N1) 2009 virus infection. *Clinical infectious diseases : an official publication of the Infectious Diseases Society of America.* 2011;52(4):447-56.
22. Luke TC, Kilbane EM, Jackson JL, Hoffman SL. Meta-analysis: convalescent blood products for Spanish influenza pneumonia: a future H5N1 treatment? *Annals of internal medicine.* 2006;145(8):599-609.
23. Mair-Jenkins J, Saavedra-Campos M, Baillie JK, Cleary P, Khaw F-M, Lim WS, et al. The effectiveness of convalescent plasma and hyperimmune immunoglobulin for the treatment of severe acute respiratory infections of viral etiology: a systematic review and exploratory meta-analysis. *The Journal of infectious diseases.* 2015;211(1):80-90.
24. Zhang L, Liu Y. Potential Interventions for Novel Coronavirus in China: A Systematic Review. 2020.
25. Bellani G, Laffey JG, Pham T, Fan E, Brochard L, Esteban A, et al. Epidemiology, Patterns of Care, and Mortality for Patients With Acute Respiratory Distress Syndrome in Intensive Care Units in 50 Countries. *Jama.* 2016;315(8):788-800.

Figure Legend

Figure 1 Typical chest radiographs of a patient. Chest radiographs of one patient on day 1 at ICU admission (A) and day 5 (B); CT scan of chest of the same patient on day 10 and day 20 after ICU

admission.

Figure 2 Correlation between SOFA score, lymphocyte count and LDH

(**A**) SOFA score at ICU admission was significantly negatively correlated with lymphocyte count (Spearman's rho= -0.57, P<0.001) and (**B**) positively associated with LDH (Spearman's rho= 0.51, P<0.001).

Table 1 Demographics and baseline characteristics of patients with severe SARS-CoV-2

Characteristics	All patients	Intubation	Non-intubation
Area of origin, n (%)	45	20 (44.4)	25 (55.6)
First Affiliated Hospital of Guangzhou Medical University	16 (35.6)	12 (60)	4 (16)
Dongguan People's Hospital	10 (22.2)	4 (20)	6 (24)
Foshan First People's Hospital	9 (20.0)	2 (10)	7 (28)
First Affiliated Hospital of Shantou University Medical College	3 (6.7)	1 (5)	2 (8)
Affiliated Hospital of Guangdong Medical University	3 (6.7)	0	3 (12)
Huizhou Municipal Central Hospital	3 (6.7)	0	3 (12)
Zhongshan City People's Hospital	1 (2.1)	1 (5.0)	0
Age (years):	56.7 ± 15.4	62.1 ± 13.56	52.4 ± 15.7
Sex, n (%)			
Male	29 (64.4)	14 (70)	15 (60)
Female	16 (35.6)	6 (30)	10 (40)
Body mass index, kg/m ²	24.2 (22.0-26.7)	23.2 (21.4-25.3)	25.0 (22.9-26.9)
Exposure, n (%)			
Exposure to Hubei	36 (80.0)	18 (90)	18 (72)
Exposure to confirmed patients	26 (57.8)	12 (60)	14 (56)
Familial cluster	19 (42.2)	11(55)	8 (32)
Positive reverse transcriptase-polymerase chain reaction, n (%)	45 (100)	20 (100)	25 (100)
Chronic diseases, n (%)			
At least one preexisting condition	26 (57.8)	14 (70)	12 (48)
Hypertension	21 (46.7)	11 (55)	10 (40)
Diabetes	13 (28.9)	6 (30)	7 (28)
Chronic cardiac disease	6 (13.3)	4 (20)	2 (8)
Chronic pulmonary disease	4 (8.9)	3 (15)	1 (4)
Cancers	3 (6.7)	1 (5)	2 (8)
Immunosuppression	1 (2.2)	0	1 (4)
Smoker(+ex-smoker), n (%)	8 (17.8)	3 (15)	5 (20)
Symptoms (%)			
Fever	39 (86.7)	18 (90)	21 (84)
Cough	32 (71.1)	15 (75)	17 (68)
Sputum	18 (40.0)	7 (35)	11 (44)
Dyspnoea	29 (64.4)	15 (75)	14 (56)
Chest tightness	10 (22.2)	6 (30)	4 (20)
Myalgia	4 (8.9)	2 (10)	2 (8)
Malaise	17 (37.8)	10 (50)	7 (28)
Diarrhea	0	0	0
Duration from onset of symptoms to ICU admission, days	10.0 (8.0-13.0)	11.0 (7.5-14.0)	10.0 (8.0-12.0)

pneumonia

Table 2 Differences in Laboratory findings in patients with severe SARS-CoV-2 pneumonia

Characteristics	All patients (n=45)	Intubation (n=20)	Non-intubation (n=25)	P value
PaO ₂ /FiO ₂ ratio, mm Hg	170.0 (115.5-218.2)	130.6 (100.2-197.0)	198.8 (142.4-279.1)	0.0030
PaCO ₂ , mm Hg	38.3 (35.5-41.5)	40.3 (34.5-47.6)	38.0(35.1-39.7)	0.1142
White blood cell count (*10 ⁹ /L)	8.3 (5.6-10.3)	9.7 (7.4-12.9)	6.5 (4.8-9.2)	0.0037
Neutrophil count (*10 ⁹ /L)	6.8 (4.4-9.5)	9.0 (6.330-13.15)	5.5 (3.8-8.3)	0.0022
Lymphocyte count (*10 ⁹ /L)	0.5 (0.3-0.7)	0.4(0.3-0.5)	0.7(0.5-0.9)	< 0.001
Haemoglobin, g/L	121.0 (111.0-133.0)	115.5 (105.5-122.5)	129.0 (116.5-141.0)	0.0024
Platelet count (*10 ⁹ /L)	189.7 ± 72.7	165.5 ± 51.5	209.0 ± 81.9	0.0448
Prothrombin time, s	13.4 (12.3-14.9)	14.6 (13.2-15.2)	13.1 (12.0-13.7)	0.0341
Troponin I, ug/L	0.01(0.01-0.02)	0.03 (0.02-0.05)	0.01 (0.00-0.01)	<0.001
Lactate dehydrogenase, U/L	338.0 (248.0-437.9)	397.1 (342.2-523.8)	285.3 (215.5-346.7)	0.0012
Creatine kinase, U/L	66.5 (44.7-114.4)	83.0 (52.2-221.2)	45.0 (30.6-75.4)	0.0034
Serum creatinine, umol/L	67.6 (54.2-86.0)	75.6 (61.8-116.0)	62.7 (53.3-78.9)	0.0305
Total bilirubin, μmol/L	15.5 (10.5-21.3)	12.5 (9.1-20.6)	19.0 (13.2-22.7)	0.1311
Aspartate aminotransferase, U/L	27 (22.0-39.5)	32.4 (24.8-60.1)	23.1 (20.3-32.8)	0.0261
Alanine aminotransferase, U/L	29.0 (20.1-50.0)	27.3 (17.6-46.8)	30.0 (19.7-56.0)	0.5831
Albumin, g/L	31.6 (30.2-34.5)	31.0 (30.0-34.5)	33.0 (30.3-35.4)	0.7472
Lactate, mmol/L	1.9 (1.5-2.3)	2.1 (1.7-2.7)	1.5 (1.3-2.1)	0.0145
Procalcitonin, ng/mL	0.1 (0.1-0.3)	0.4 (0.1-2.9)	0.1 (0.1-0.1)	<0.001
Potassium, mmol/L	3.9 ± 0.7	4.2 ± 0.8	3.7 ± 0.5	0.0196
Sodium, mmol/L	137.2 ± 4.0	138.2 ± 5.0	136.3 ± 2.8	0.1081

Table 3 Comorbidities during ICU and treatments of patients with severe SARS-CoV-2 pneumonia

Characteristics	All patients (n=45)	Intubation (n=20)	Non-intubation (n=25)
APACHE II score	14.0 (8.0-18.0)	18.0 (15.0-24.8)	10.0 (7.0-13.0)
SOFA score	4.0 (3.0-6.8)	6.0 (5.0-11.0)	3.0 (2.0-3.8)
Comorbidities during ICU, n (%)			
ARDS	37 (82.2)	20 (100)	17 (68)
Septic shock	13 (28.9)	13 (100)	0
Cardiac injury	10 (22.2)	10 (100)	0
Acute kidney injury	7 (15.6)	7 (100)	0
Liver dysfunction	17 (37.8)	12 (60)	5 (20)
Gastrointestinal haemorrhage	14 (31.1)	12 (60)	2 (8)
Barotrauma	3 (6.7)	3 (100)	0
Bacterial co-infection	17 (37.8)	13 (65)	4 (16)
Fungal co-infection	12 (26.7)	9 (45)	3 (12)
Treatment in ICU, n (%)			
Antiviral agents	45 (100)	20 (100)	25 (100)
Antibacterial agents	45 (100)	20 (100)	25 (100)
Antifungal agents	19 (42.2)	14 (70)	5 (20)
Convalescent plasma	6 (13.3)	6 (100)	0
Glucocorticoids	21 (46.7)	10 (50)	11 (44)
Immunoglobulin	28 (62.2)	15 (75)	13 (52)
Albumin	35 (77.8)	18 (90)	17 (68)

Table 4 Respiratory settings of patients with severe SARS-CoV-2 pneumonia

Respiratory settings	All patients (n=45)
Ventilator mode	
A/C (%)	17 (37.8)
SIMV (%)	3 (6.7)
Tidal volume, PBW (ml/kg)	7.00 ± 0.59 (n=14)
PEEP (cmH ₂ O)	10.0 (9.0-10.5)
FiO ₂ (%)	67.1 ± 8.1
Lung recruitment (%)	6 (13.3)
Prone position ventilation (%)	5 (11.1)
Sedation and analgesia (%)	19 (42.2)
Neuromuscular blocking agents (%)	8 (17.8)
Vasoconstrictive agents (%)	15 (33.3)
Non-invasive mechanical ventilation (%)	6 (13.3)
CPAP (%)	0
BiPAP (%)	6 (13.3)
FiO ₂ (%)	45 ± 6.32
HFNC (%)	13 (28.9)
Flow rates (L/min)	50 (50-50)
FiO ₂ (%)	52.5 ± 10.6
Oxygen therapy by mask/nasal cannula (%)	6 (13.3)
ECMO (%)	9 (20.0)
CRRT (%)	4 (8.9)
Weaning before Feb 28 th (%)	7 (15.6)
ICU discharge before Feb 28 th (%)	23 (51.1)
Hospital discharge before Feb 28 th (%)	11 (24.4)
Death before Feb 28 th (%)	1 (2.2)

Abbreviation: A/C, assist-control ventilation; SIMV, synchronized intermittent mandatory ventilation; PEEP, positive end-expiratory pressure; CPAP, continuous positive airway pressure; BiPAP, bilevel positive airway pressure; ECMO, extracorporeal membrane oxygenation; CRRT, continuous renal replacement therapy; ICU, intensive care unit.

Table 5 Risk Factors for intubation

Risk Factors	Intubation (n=20)	Non-intubation (n=25)	P value
Age, years			0.0275
≥60	13	8	
<60	7	17	
Preexisting conditions			0.2541
Yes	13	12	
No	7	13	
SOFA score at ICU admission			<0.0001
≥ 4	18	7	
< 4	2	18	
APACHE II score at ICU admission			<0.0001
≥ 15	18	3	
< 15	2	22	
PaO ₂ /FiO ₂ at ICU admission			0.0662
≥150	9	18	
<150	11	7	
Lymphocyte, (*10 ⁹ /L)			0.0165
≤0.8	20	17	
>0.8	0	8	
LDH, U/L			0.0368
≥ 255	17	14	
< 255	3	11	

APACHE II score, Acute Physiology and Chronic Health Evaluation II score; SOFA, Sequential Organ Failure Assessment; PaO₂/FiO₂; LDH, lactate dehydrogenase

Figure 1 Typical chest radiographs of a patient

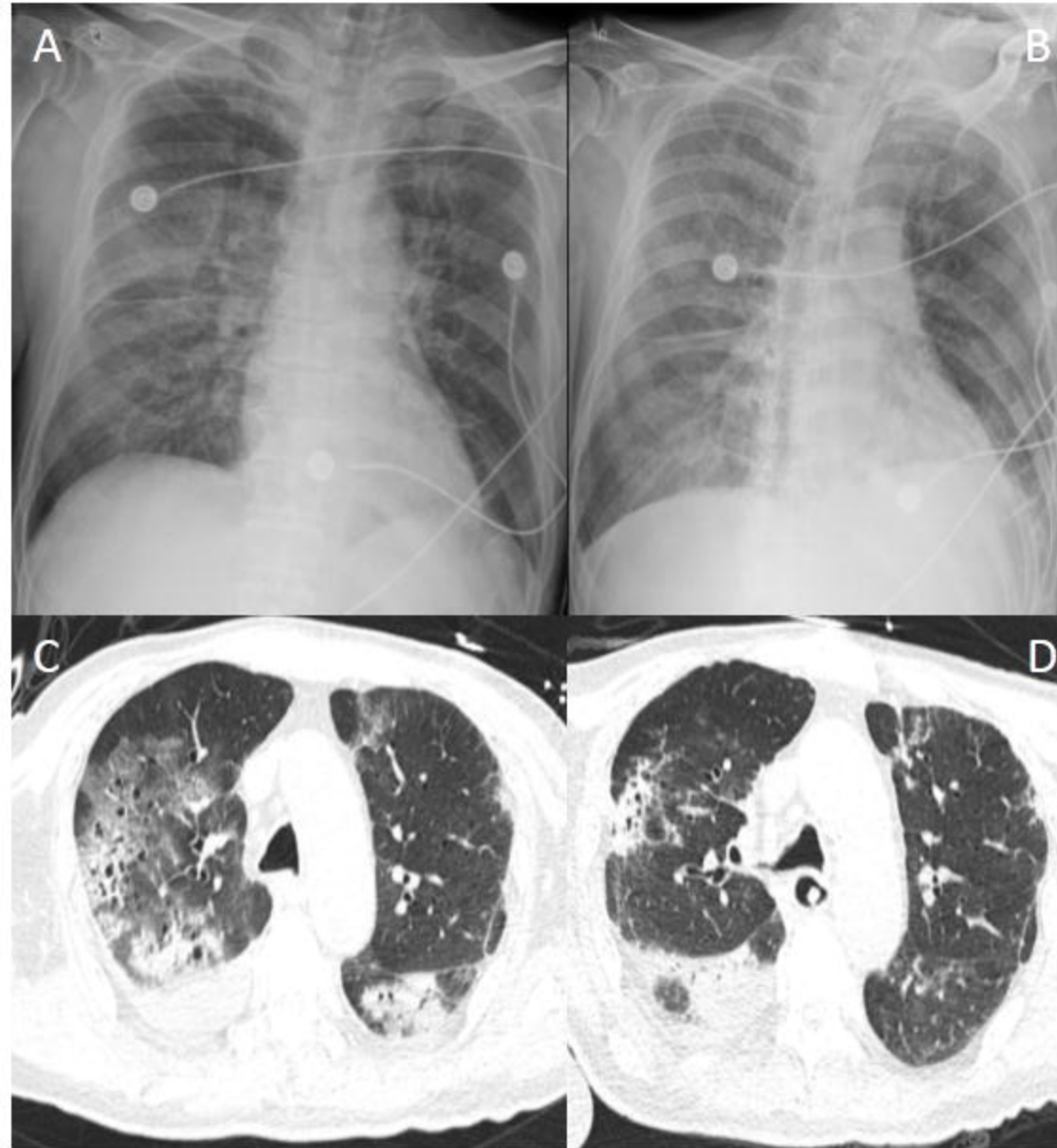
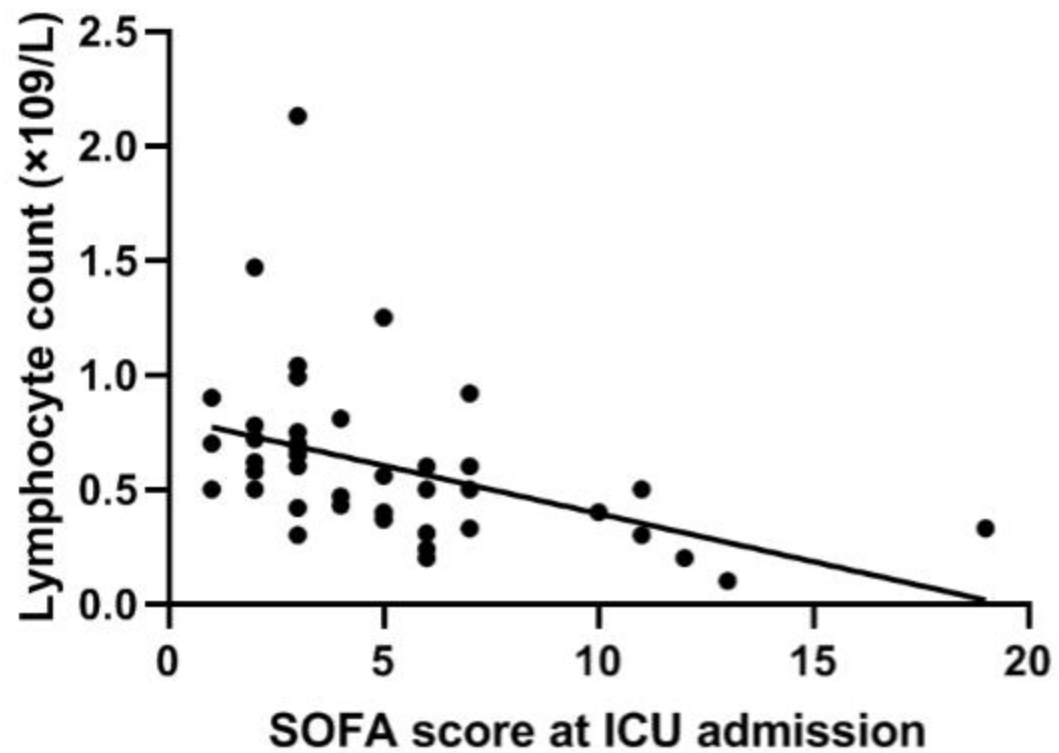


Figure 2

A



B

