

Research Article

Clinical Characteristics of Patients with Severe Pneumonia Caused by the 2019 Novel Coronavirus in Wuhan, China

Yafei Wang^{1*}, Ying Zhou^{1*}, Zhen Yang¹, Dongping Xia¹, Shuang Geng^{1#}

¹ Department of Respiratory, The Central Hospital of Wuhan, Tongji Medical College, Huazhong University of Science and Technology, Hubei, China

* Equal contributors: Yafei Wang and Ying Zhou should be considered joint first author.

Short Title: The clinical characteristics of 2019 novel coronavirus severe pneumonia

*Corresponding Author

Full name: Shuang Geng

Department: Department of Respiratory, The Central Hospital of Wuhan, Tongji Medical College, Huazhong University of Science and Technology, Hubei, China

Street Name & Number: Shengli Street No. 26

City, State, Postal code, Country: Wuhan, Hubei, 430014, China

Tel: +8613476192468

E-mail: gszxyy123@163.com

Keywords: 2019 Novel Coronavirus · Severe pneumonia · Lymphocyte · D-dimer

1 **Abstract**

2 **Background:** A new virus broke out in Wuhan, Hubei, China, and was later named 2019 novel
3 coronavirus (2019-nCoV). The clinical characteristics of severe pneumonia caused by 2019-nCoV are
4 still not clear.

5 **Objectives:** The aim of this study was to explore the clinical characteristics and risk factors of the
6 severe pneumonia caused by the 2019-nCoV in Wuhan, China.

7 **Method:** The study included patients hospitalized at the central hospital of Wuhan who had been
8 diagnosed with a pneumonia caused by the novel coronavirus. Clinical features, chronic co-
9 morbidities, demographic data, laboratory examinations, and chest computed tomography (CT) scans
10 were reviewed through electronic medical records. SPSS was used for data analysis to explore the
11 clinical characteristics and risk factors of the patients with the severe pneumonia.

12 **Results:** A total of 110 patients diagnosed with 2019 novel coronavirus pneumonia were included in
13 the study, including 38 with severe pneumonia and 72 with non-severe pneumonia. Statistical analysis
14 showed that advanced age, an increase of D-dimer, and a decrease of lymphocytes were characteristics
15 of the patients with severe pneumonia. Moreover, in the early stage of the disease, chest CT scans of
16 patients with the severe pneumonia showed the illness can progress rapidly.

17 **Conclusions:** Advanced age, lymphocyte decline, and D-dimer elevation are important characteristics
18 of patients with severe pneumonia. Clinicians should focus on these characteristics to identify high-
19 risk patients at an early stage.

20 **Introduction**

21 In December 2019, a new type of unexplained pneumonia was reported in Wuhan, Hubei, China,
22 which appeared to be related to the Huanan Seafood Wholesale Market[1-3]. The disease spread
23 rapidly from Wuhan to the surrounding provinces and cities, which got the attention of the government
24 and the administrative departments of health at all levels. The Chinese Center for Disease Control and
25 Prevention (CDC) promptly organized the relevant disease control agencies, medical units, and
26 research institutes to carry out investigations and treatment. A new type of coronavirus was detected
27 by researchers in a patient's bronchoalveolar lavage fluid sample on January 3, 2020[4]. The World
28 Health Organization (WHO) named it the 2019-novel coronavirus (2019-nCoV) and announced that
29 the new coronavirus epidemic had been listed as a public health emergency of international concern on
30 January 30, 2020. As of 18:00 on February 11, 2020, there were 42,744 confirmed cases, 21,675
31 suspected cases, 4,161 cured cases, and 1,017 deaths in China .

32 The 2019-nCoV, which belongs to the genus betacoronavirus, is a single-stranded positive-strand
33 RNA virus that appears to be distinct from, but is related to, other coronaviruses, such as severe acute
34 respiratory syndrome-related coronavirus (SARSr-CoV) and Middle East respiratory syndrome
35 coronavirus (MERSr-CoV)[4-8]. Current studies have shown that 2019-nCoV has about an 89%
36 homology with bat SARS-like-CoVZXC21 and 82% homology with human SARS-CoV[9]. The
37 disease is highly contagious, and may rapidly develop into severe pneumonia, acute respiratory
38 distress syndrome (ARDS), multiple organ dysfunction syndrome (MODS), and death, so the top
39 priority for clinicians is to identify and treat the severest patients in the early stage. The aim of this
40 study was to assess the potential high-risk factors of 2019-nCoV severe pneumonia and provide
41 evidence for the screening of severely afflicted patients.

42 **Methods**

43 *Patients*

44 All of the patients in this study were hospitalized in a respiratory department, the Respiratory Intensive
45 Care Unit (RICU), from January 1, 2020 to February 10, 2020. The patients were all admitted to the
46 hospital because they were infected with 2019-nCoV and suffered from various kinds of symptoms,
47 including fever, dyspnea, cough, and fatigue. Every patient had completed the relevant laboratory
48 examination, including various common pathogen detection and chest computed tomographic (CT)
49 scans. All of the patients were local residents of Wuhan. Moreover, most of the patients had a history
50 of exposure to the Huanan Seafood Wholesale Market or had made contact with people who had been
51 confirmed (or suspected) to have contracted the illness. The 2019-nCoV nucleic acid detection of
52 some patients was positive, while for others, it was negative. These results could have been caused by
53 the immaturity of the methods used for 2019-nCoV nucleic acid detection, which led to false negative

54 results. High-resolution CT scans with a scan layer thickness of 5 mm and a reconstruction of a 1-1.5
55 mm thin layer are recommended for the radiological examination of 2019n-CoV pneumonia. Based on
56 the patients' exposure history, clinical symptoms, laboratory examinations, and chest CT scans, all of
57 the patients were clinically diagnosed with 2019-nCoV pneumonia according to WHO's interim
58 guidance[10]. For patients who were suspected to have the illness, two senior respiratory doctors made
59 the diagnosis together.

60 The patients were divided into two groups: patients with severe pneumonia and those with non-severe
61 pneumonia. The former referred to patients with the following severe manifestations: fever or
62 suspected respiratory infection, plus one of a respiratory rate >30 breaths/min, severe respiratory
63 distress, or SpO₂ <90% on room air. Patients with ARDS, sepsis, or septic shock were also included.
64 The patients without the above severe signs were defined as having non-severe pneumonia. Patients
65 who had the illness combined with other bacterial, fungal, or other viral infections and those with
66 missing data were excluded. The study was approved by the ethics committee of Wuhan Central
67 Hospital (Yuan lun han (2020) no.4).

68 *Data collection*

69 The patient data were extracted from the Central Hospital of Wuhan, which is a tertiary teaching
70 hospital and is responsible for the treatment for patients with 2019-nCoV pneumonia, as assigned by
71 the Chinese government. Clinical features, chronic co-morbidities, demographic data, laboratory
72 examinations, and chest CT scans were reviewed using electronic medical records. Laboratory
73 examinations included routine blood tests, as well as tests of the liver function, kidney function,
74 electrolytes, B-type natriuretic peptide, D-dimer, C-reactive protein, and procalcitonin. We obtained
75 the lymphocyte absolute values of patients with severe pneumonia on the first day and the third day
76 after admission. The D-dimer data of patients with severe pneumonia on the first day, the third day,
77 and the seventh day after admission were also collected. Chest CT scans were reviewed on the first
78 day and the third day for patients with severe pneumonia. In addition to collecting the albumin data on
79 the first day after admission, the data on the seventh day were also obtained for patients with severe
80 pneumonia. For patients with non-severe pneumonia, we only collected the data on the first day after
81 admission because the relevant items were not frequently reviewed. For patients admitted to the RICU,
82 the Acute Physiology and Chronic Health Evaluation II scores (APACHE-II) and Sequential Organ
83 Failure Assessment (SOFA) were determined on the first day. The data were acquired by physicians.
84 All of the data were checked by another researcher to ascertain its accuracy. To reflect the progression
85 of the disease in critically ill patients, we calculated the difference in the lymphocyte values between
86 day 3 and day 1, the difference in the serum albumin values between day 7 and day 1, and the
87 difference in the D-dimer values between days 3, 7, and 1.

88 *Statistical analysis*

89 The continuous variables were used as the mean and compared using the t-tests if they were normally
90 distributed, or they were described using the median. The Mann-Whitney U test was used for
91 comparisons. Categorical variables were expressed as count (%) and compared by χ^2 test or Fisher's
92 exact test. Logistic regression analysis was used to assess the risk factors of severe pneumonia. The
93 difference of a certain indicator in the same patient at different periods was shown by a bar chart. A
94 two-sided α of less than 0.05 was considered statistically significant. We used SPSS software (version
95 23.0) for statistical analysis.

96 **Results**

97 *Basic characteristics*

98 A total of 110 hospitalized patients participated in this study, which included 38 (34.5%) patients with
99 severe pneumonia and 72 (65.5%) patients with non-severe pneumonia. Table 1 shows that compared
100 with patients with non-severe pneumonia, males accounted for a greater proportion of those with
101 severe pneumonia and the difference was significant (24 [63.16%] vs. 24 [33.33%]). The patients with
102 severe pneumonia tended to be older and had complications with COPD (4 [10.53%] vs. 2 [2.78%])
103 and hypertension (15 [39.47%] vs. 8 [11.11%]). Patients over the age of 60 years accounted for a
104 greater proportion of the severe pneumonia cases (27 [71.05%] vs. 9 [12.5%]). There was no
105 significant difference in the smoking history and drinking history between the two groups. The
106 incidence of diabetes and cerebrovascular disease was similar in both groups. According to the
107 patients' medical history, the common symptoms at the onset of the illness were fever, fatigue, dry
108 cough, and dyspnea. Although the initial symptoms of the patients with severe pneumonia were more
109 commonly fever and dyspnea, and the difference was not statistically significant. The temperature
110 ranges were divided into low fever (temperature $\leq 38^\circ\text{C}$), moderate fever (temperature $\geq 38.1^\circ\text{C}$,
111 $\leq 39^\circ\text{C}$), and high fever (temperature $\geq 39.1^\circ\text{C}$). However, there was no statistical difference between
112 the two groups.

113 *Laboratory parameters*

114 There was a number of differences in the laboratory findings between the patients with severe
115 pneumonia and those without it (Table 1), including a lower lymphocyte count, platelet count, and
116 serum albumin. The level of serum creatinine, blood urea nitrogen, aspartate aminotransferase, c-
117 reactive protein, serum procalcitonin, D-dimer, and B-type natriuretic peptide were higher in the
118 patients with severe pneumonia. The white blood cell count, neutrophil count, hemoglobin, and
119 alanine aminotransferase did not differ between the two groups. Statistically, some parameters were
120 different between the two groups, but still within the normal range, including the platelet count, serum
121 creatinine, blood urea nitrogen, aspartate aminotransferase, and serum procalcitonin.

122 *Characteristics of patients with severe pneumonia*

123 Binomial logistics regression analysis was used to assess the risk factors of severe pneumonia. The
124 variables with statistical differences between the two groups were incorporated into in the logistics
125 regression equation. To better understand the correlation between the lymphocytes and D-dimer
126 measurements with severe pneumonia, we divided the values of the lymphocytes and d-dimer by their
127 standard deviations. The results revealed that after adjusting for other confounding factors, the age and
128 D-dimer values were independent risk factors of severe pneumonia (Table 2). Patients over the age of
129 60 years and in the range of 40 to 60 old had a significantly higher risk of developing severe
130 pneumonia than those under the age of 40. For every 1 standard deviation increase in the D-dimer
131 value, the patients' risk of developing severe pneumonia increased by about 17 times. In addition,
132 lymphocytes were found to be independent protective factors for severe pneumonia. The incidence of
133 severe pneumonia in patients with a 0.55 increase in lymphocytes decreased by about 67.8%.

134 Both the APACHE-II and SOFA scores were assessed in patients with severe pneumonia, with results
135 of 14.5 (13, 17) and 6 (5, 7), respectively (Table 3). Severe pneumonia usually progresses rapidly, and
136 many clinical indicators can change in a short time, especially the lymphocyte, D-dimer, serum
137 albumin, and chest CT manifestations. To better identify severe pneumonia early, we calculated the
138 difference in the lymphocyte counts, serum albumin values, and D-dimer values at different points in
139 time (Table 3, Figs. 1-4). The results showed that in the early stage of the disease, the lymphocyte and
140 serum albumin decreased and the D-dimer increased with the progress of the disease. We have
141 included 2 chest CT scans of one patient with severe pneumonia at different time periods, which
142 suggested the rapid progress of the disease (Fig. 5).

143 **Discussion**

144 This was a cross-sectional study on the clinical characteristics of patients with 2019-nCoV, especially
145 those with severe pneumonia. Our study suggested that advanced age, lymphocyte decline, and D-
146 dimer elevation were more prominent in the patients with severe pneumonia, which is useful for the
147 early identification of patients with severe pneumonia.

148 The laboratory examinations showed that patients with severe pneumonia had depressed serum
149 albumin, elevated serum creatinine, blood urea nitrogen, aspartate aminotransferase, C-reactive protein,
150 and B-type natriuretic peptide. Hypoproteinemia may be due to the patient's consumption and
151 inadequate protein intake caused by poor appetite. A previous study reported that hypoalbuminemia is
152 a potent, dose-dependent predictor of poor outcomes for pneumonia with the coronavirus infection[11].
153 An elevated amount of C-reactive protein may be associated with the inflammatory response and
154 cytokine storms caused by the virus in the blood vessels. These results were consistent with a previous
155 study, which showed that the C-reactive protein level was positively correlated with the severity of the
156 pneumonia[12].

157 According to the results of the binomial logistics regression analysis, we found that age and the level
158 of the D-dimer were independent risk factors. These results suggested that the level of D-dimer was
159 significantly positively correlated with the 2019-nCoV severe pneumonia, which was also shown in
160 another study[13]. Previous studies showed that SARS-CoV could bind to ACE2, down-regulating the
161 expressions of ACE2, and resulting in an increased Angiotensin II level in mouse blood samples,
162 signaling through Angiotensin II receptor 1, and induced acute lung injury[14-16]. ACE2 is a receptor
163 protein of both SARS-CoV and 2019-nCoV, and it is abundantly present in the epithelia of the lung
164 and small intestine[17]. It was reported that 2019-nCoV binds to the ACE2 in the same way as SARS-
165 CoV[18], inducing damage to the pulmonary arteries and leading to the extensive embolization in the
166 extensive alveolar terminal capillaries. These changes eventually lead to an increase in D-dimer. A
167 significant lymphocyte decline in the progression of severe pneumonia was also observed, which was
168 consistent with the results of Huang et al[19]. Decreased lymphocytes suggested that 2019-nCoV may
169 primarily attack the body's immune system, especially the T lymphocytes, which is similar to the
170 action of SARS-CoV[20]. After 2019-nCoV impairs the immune system, it is difficult to prevent the
171 virus replication by immediately forming the neutralizing antibody. Non-specific pulmonary
172 secondary inflammation acts with the 2019-nCoV infection, inducing cytokine storms and producing a
173 series of immune responses and causing disorders of the lymphocyte subsets. Therefore, the above
174 may explain the decline of lymphocytes and the rise of D-dimer in the progression of severe
175 pneumonia. In addition, the pulmonary CT findings of patients with severe pneumonia can progress
176 rapidly, so it is important to review chest CT scans in a timely fashion to learn about the pulmonary
177 lesions.

178 *Limitations*

179 This study had several limitations. First, only 110 patients from a single hospital were included in this
180 study; a larger scale study needs to be carried out to confirm our conclusions. Second, most of the
181 patients were still hospitalized when the manuscript was submitted, so we could not verify the efficacy
182 of the therapeutic and prognosis of the patients.

183 **Conclusions**

184 In general, the results suggested that advanced age, decreased lymphocytes, and elevated levels of D-
185 dimer were risk factors for severe pneumonia. Clinicians should pay close attention to these indicators
186 and identify high-risk patients as early as possible. More studies are needed to explore the clinical
187 characteristics and treatment options of critically ill patients.

188 **Statements**

189 **Acknowledgement**

190 We thank LetPub (www.letpub.com) for its linguistic assistance during the preparation of this
191 manuscript.

192 **Statement of Ethics**

193 The study was approved by Ethics Committee of Wuhan Central Hospital (Yuan lun han [2020] no.4).
194 As this study was a retrospective study, only clinical data of patients were collected, and privacy data
195 such as name, ID number and telephone number were not involved, so no informed consent was
196 obtained. Moreover, the data were only used for scientific research, not for other purposes.

197 **Disclosure Statement**

198 All other authors report no conflicts of interest.

199 **Funding Sources**

200 The research received no funding.

201 **Author Contributions**

202 Y.F.W. and Y.Z. had full access to all of the data in the study and take responsibility for the integrity
203 of the data and the accuracy of the data analysis. Study concept and design: Y.F.W., S.G. Acquisition,
204 analysis, or interpretation of data: Y.F.W., Y.Z., Z.Y., D.P.X.. Drafting of the manuscript: Y.F.W.,
205 Y.Z., S.G. Critical revision of the manuscript for important intellectual content: all authors. Statistical
206 analysis: Y.F.W, Y.Z. Administrative, technical, or material support: D.P.X., Z.Y. Study supervision:
207 S.G.

References (Numerical)

- 1 Lu H, Stratton CW, Tang Y-W. Outbreak of pneumonia of unknown etiology in Wuhan, China: The mystery and the miracle. *J Med Virol*. 2020;10.1002/jmv.25678.
- 2 Hui DS, I Azhar E, Madani TA, Ntoumi F, Kock R, Dar O, et al. The continuing 2019-nCoV epidemic threat of novel coronaviruses to global health - The latest 2019 novel coronavirus outbreak in Wuhan, China. *Int J Infect Dis*. 2020;91:264-6.
- 3 Paules CI, Marston HD, Fauci AS. Coronavirus Infections-More Than Just the Common Cold. *JAMA*. 2020;10.1001/jama.2020.0757.
- 4 Zhu N, Zhang D, Wang W, Li X, Yang B, Song J, et al. A Novel Coronavirus from Patients with Pneumonia in China, 2019. *The New England journal of medicine*. 2020;10.1056/NEJMoa2001017.
- 5 Lu R, Zhao X, Li J, Niu P, Yang B, Wu H, et al. Genomic characterisation and epidemiology of 2019 novel coronavirus: implications for virus origins and receptor binding. *Lancet (London, England)*. 2020;S0140-6736(20)30251-8.
- 6 Yin Y, Wunderink RG. MERS, SARS and other coronaviruses as causes of pneumonia. *Respirology (Carlton, Vic)*. 2018;23(2):130-7.
- 7 Drosten C, Günther S, Preiser W, van der Werf S, Brodt H-R, Becker S, et al. Identification of a novel coronavirus in patients with severe acute respiratory syndrome. *The New England journal of medicine*. 2003;348(20):1967-76.
- 8 Zaki AM, van Boheemen S, Bestebroer TM, Osterhaus ADME, Fouchier RAM. Isolation of a novel coronavirus from a man with pneumonia in Saudi Arabia. *The New England journal of medicine*. 2012;367(19):1814-20.
- 9 Chan JF-W, Kok K-H, Zhu Z, Chu H, To KK-W, Yuan S, et al. Genomic characterization of the 2019 novel human-pathogenic coronavirus isolated from a patient with atypical pneumonia after visiting Wuhan. *Emerg Microbes Infect*. 2020;9(1):221-36.
- 10 Organization WH. Clinical management of severe acute respiratory infection when novel coronavirus (2019-nCoV) infection is suspected: interim guidance, 25 January 2020. World Health Organization, 2020.
- 11 Vincent J-L, Dubois M-J, Navickis RJ, Wilkes MM. Hypoalbuminemia in acute illness: is there a rationale for intervention? A meta-analysis of cohort studies and controlled trials. *Ann Surg*. 2003;237(3):319-34.
- 12 Liu Y, Yang Y, Zhang C, Huang F, Wang F, Yuan J, et al. Clinical and biochemical indexes from 2019-nCoV infected patients linked to viral loads and lung injury. *Sci China Life Sci*. 2020;10.1007/s11427-020-1643-8.
- 13 Wang D, Hu B, Hu C, Zhu F, Liu X, Zhang J, et al. Clinical Characteristics of 138 Hospitalized Patients With 2019 Novel Coronavirus-Infected Pneumonia in Wuhan, China. *JAMA*. 2020;10.1001/jama.2020.1585.
- 14 Huang F, Guo J, Zou Z, Liu J, Cao B, Zhang S, et al. Angiotensin II plasma levels are linked to disease severity and predict fatal outcomes in H7N9-infected patients. *Nat Commun*. 2014;5:3595-.
- 15 Imai Y, Kuba K, Rao S, Huan Y, Guo F, Guan B, et al. Angiotensin-converting enzyme 2 protects from severe acute lung failure. *Nature*. 2005;436(7047):112-6.
- 16 Zou Z, Yan Y, Shu Y, Gao R, Sun Y, Li X, et al. Angiotensin-converting enzyme 2 protects from lethal avian influenza A H5N1 infections. *Nat Commun*. 2014;5:3594-.
- 17 Hamming I, Timens W, Bulthuis MLC, Lely AT, Navis GJ, van Goor H. Tissue distribution of ACE2 protein, the functional receptor for SARS coronavirus. A first step in understanding SARS pathogenesis. *J Pathol*. 2004;203(2):631-7.
- 18 Zhou P, Yang X-L, Wang X-G, Hu B, Zhang L, Zhang W, et al. Discovery of a novel coronavirus associated with the recent pneumonia outbreak in humans and its potential bat origin. *bioRxiv*. 2020.
- 19 Huang C, Wang Y, Li X, Ren L, Zhao J, Hu Y, et al. Clinical features of patients infected with 2019 novel coronavirus in Wuhan, China. *Lancet (London, England)*. 2020;S0140-6736(20)30183-5.
- 20 Yu X-y, Zhang Y-c, Han C-w, Wang P, Xue X-j, Cong Y-l. Change of T lymphocyte and its activated subsets in SARS patients. *Zhongguo Yi Xue Ke Xue Yuan Xue Bao*. 2003;25(5):542-6.

Table 1. Characteristics of patients with severe and non-severe pneumonia

	Normal Range	Severe Pneumonia (n=38)	Non-severe Pneumonia (n = 72)	P Value
Male (%)	NA	24(63.16)	24(33.33)	0.004
Age range (years)	NA			<0.001
≤40		3 (7.89%)	50(69.44%)	
40<, ≤60		8(21.05%)	13(18.06%)	
≥60		27(71.05)	9(12.5%)	
Fever (%)	NA	33 (86.84%)	58 (79.17%)	0.438
Highest temperature (%)	NA			0.103
Low fever		5(13.16%)	22(30.56%)	
Moderate fever		25(65.79%)	31(43.06%)	
High fever		3(7.89%)	5(6.94%)	
Dyspnea (%)	NA	15(39.47%)	21(29.17%)	0.292
Dry cough (%)	NA	21(55.26%)	47(65.28%)	0.312
Fatigue (%)	NA	10(26.32%)	31(43.06%)	0.100
COPD (%)	NA	4(10.53%)	2(2.78%)	0.013
Diabetes (%)	NA	8(21.05%)	7(9.72%)	0.143
Hypertension (%)	NA	15(39.47%)	8(11.11%)	0.001
Cerebrovascular disease (%)	NA	3(7.89%)	4(5.56%)	0.691
Smoking (%)	NA	9(23.68%)	17(23.61%)	0.96
Drinking (%)	NA	4(10.53%)	19(26.39%)	0.083
White blood cell count (10 ⁹ /L)	3.5-9.5	5.20(3.90,6.46)	5.21(4.11,6.80)	0.772
Neutrophil count (10 ⁹ /L)	1.8-6.3	4.26(2.84,4.84)	3.38(2.33,5.24)	0.258
Lymphocyte count (10 ⁹ /L)	1.1-3.2	0.60(0.31)	1.21(0.53)	<0.001
Platelet count (10 ⁹ /L)	125-350	144.50(110.75,167.75)	179.5(151.75,226.50)	<0.001
Hemoglobin (g/L)	130-175	129.87(19.39)	132.43(16.07)	0.461
Serum creatinine (umol/L)	57-111	74.75(59.10,93.10)	55.55(43.73,72.00)	<0.001

Blood Urea Nitrogen (mmol/L)	2.78-8.07	4.99(3.97,6.53)	3.93(3.19,4.74)	<0.001
Alanine aminotransferase (U/L)	9-50	21.90(17.50,36.83)	19.75(14.45,32.10)	0.304
Aspartate aminotransferase (U/L)	10-60	36.80(27.85,45.00)	20.00(15.85,26.40)	<0.001
Serum albumin (g/L)	40-55	35.30(4.91)	40.97(4.42)	<0.001
C-reactive protein (mg/dL)	<0.5	4.98(2.72,9.74)	0.52(0.13,2.65)	<0.001
Serum procalcitonin (ng/ml)	<0.5	0.12(0.06,0.33)	0.05(0.04,0.10)	<0.001
D - dimer (ug/ml.FEU)	<1	1.11(0.47,3.83)	0.37(0.21,0.78)	<0.001
B-type natriuretic peptide (pg/ml)	<125	134.60(87.25,394.70)	43.50(19.00,80.50)	<0.001

Age was divided into three ranges: ≤ 40 years; $40 < \text{age} < 60$ years; ≥ 60 years

The temperature ranges were divided into low ($\leq 38^\circ\text{C}$), moderate ($\geq 38.1^\circ\text{C}$, $\leq 39^\circ\text{C}$), and high fevers ($\geq 39.1^\circ\text{C}$).

Table 2. The risk factors of 2019 Novel Coronavirus Severe Pneumonia

	OR	95% CI	P
Age (years)			0.004
≤ 40			
$>40, \leq 60$	12.28	[1.628,92.664]	0.015
≥ 60	25.314	[3.687,173.783]	0.001
Ly/SD	0.322	[0.137,0.756]	0.009
D-dimer/SD	17.054	[2.547,114.171]	0.003

➤ Sex, age, COPD, hypertension, lymphocyte count, platelet count, serum creatinine, blood urea nitrogen, aspartate aminotransferase, serum albumin, C-reactive protein, serum procalcitonin, D-dimer, and B-type natriuretic peptide were used in the logistic regression equation.

➤ Ly: lymphocyte; SD: standard deviation;

➤ The SD of the absolute value of the lymphocytes is 0.55;

➤ The SD of the D-dimer is 3.25.

Table 3. Characteristics of patients with severe pneumonia

	Severe pneumonia
Δ Ly	0.22(0.29)
Δ ALB	4.58(3.36)
Δ D3	3.99(0.68,12.72)
Δ D7	7.37(2.50,19.21)
PaO ₂ /FiO ₂	155(104,200.17)
APACHE-II	14.5(13,17)
SOFA	6(5,7)

- Δ Ly: Difference in the lymphocyte absolute values between day 1 and day 3 after admission,
- Δ ALB: Difference in the serum albumin values between day 1 and day 3 after admission,
- Δ D3: Difference in the D-dimer values between day 3 and day 1 after admission,
- Δ D7: Difference in the serum D-dimer values between day 7 and day 1 after admission.

PaO₂: Pressure of the arterial oxygen; FiO₂: Fraction of the inspired oxygen;

- APACHE -II: Acute Physiology and Chronic Health Evaluation II;
- SOFA: Sequential Organ Failure Assessment scores.

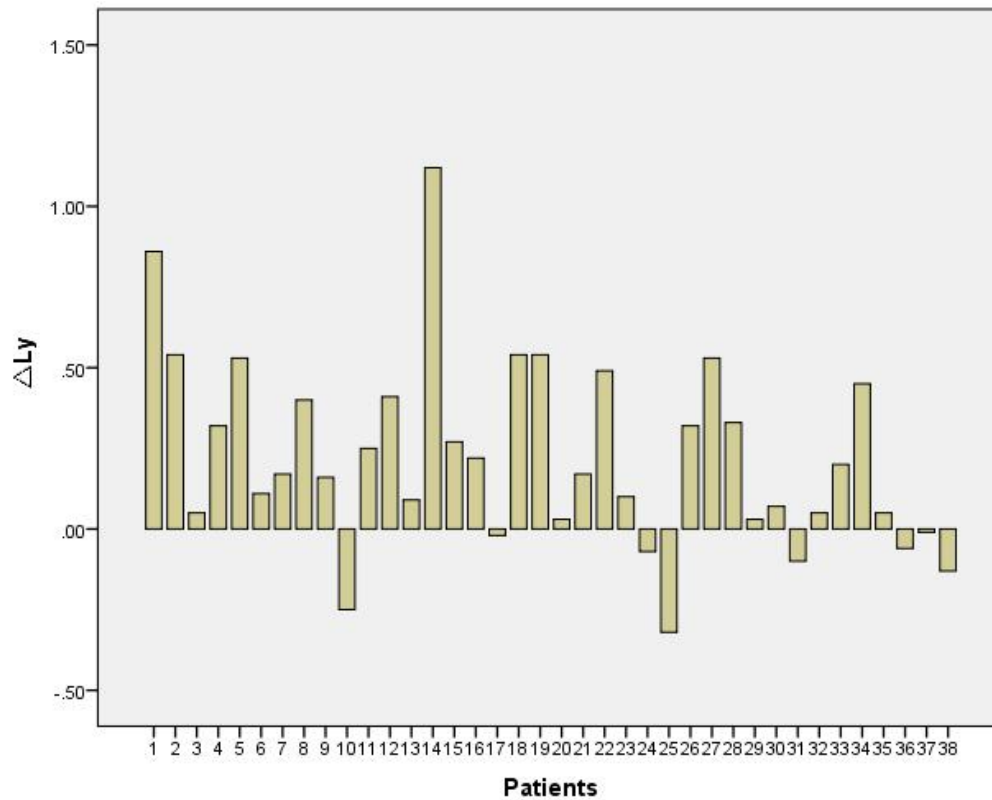


Figure 1. ΔLy : Difference in the lymphocyte absolute values between day 1 and day 3 after admission

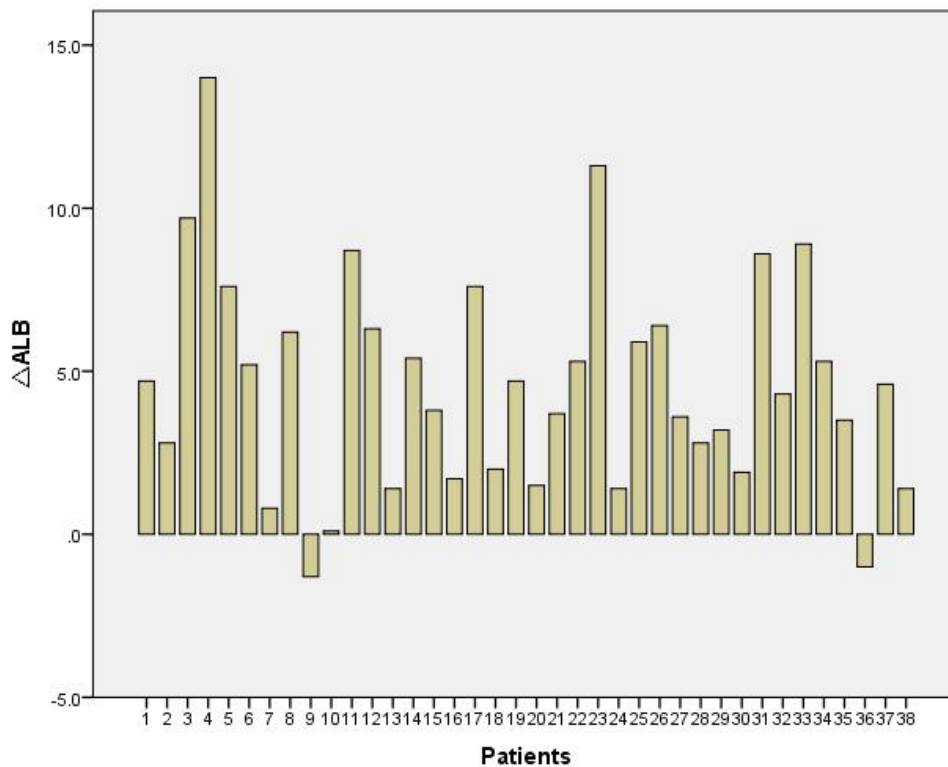


Figure 2. ΔALB : Difference in the serum albumin values between day 1 and day 3 after admission

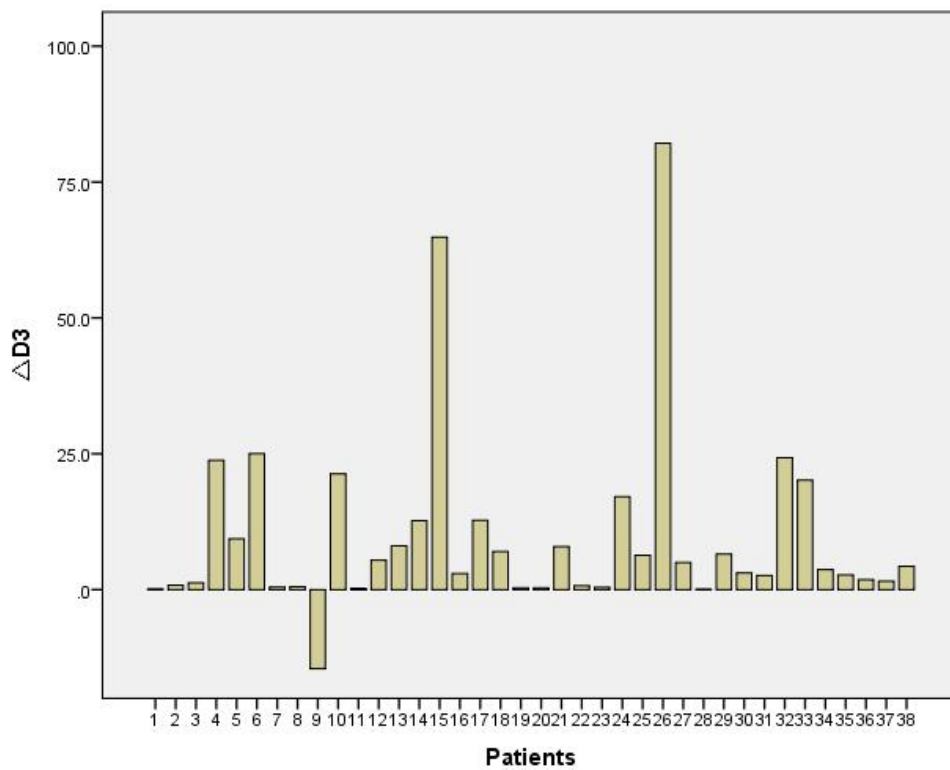


Figure 3. $\Delta D3$: Difference in the D-dimer values between day 3 and day 1 after admission

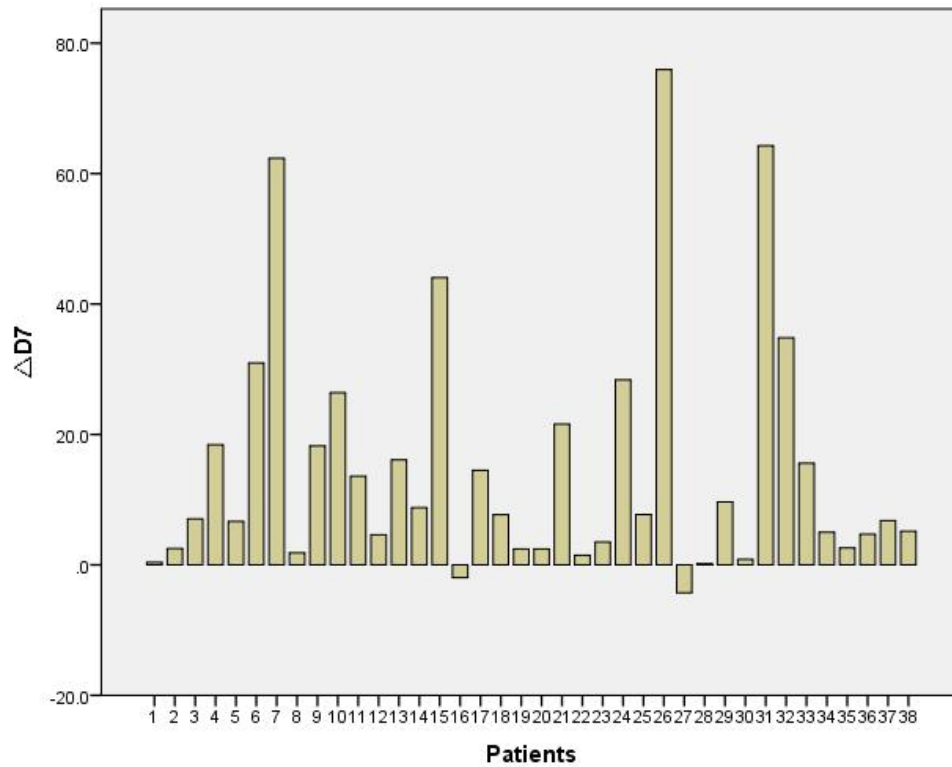


Figure 4. $\Delta D7$: Difference in the serum D-dimer values between day 7 and day 1 after admission

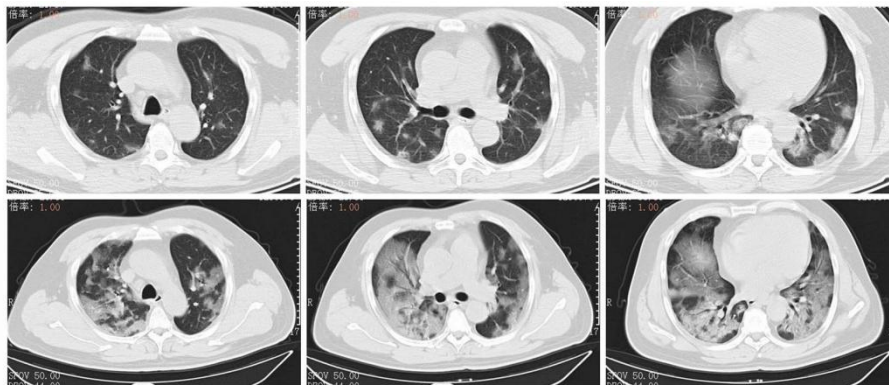


Figure5: Top Row: chest CT obtained on Jan 10 (3A) showed mass shadows of the patchy glass in both lungs, which were distributed along the bronchial bundle and subpleurum.

Next Row: Chest CT on Jan 13 showed improved status (3B) with diffuse consolidation of both lungs, uneven density and air bronchogram.