

Clinical features and sexual transmission potential of SARS-CoV-2 infected female patients: a descriptive study in Wuhan, China

Pengfei Cui, Zhe Chen*, Tian Wang*, Jun Dai*, Jinjin Zhang, Ting Ding, Jingjing Jiang, Jia Liu, Cong Zhang, Wanying Shan, Sheng Wang, Yueguang Rong, Jiang Chang, Xiaoping Miao, Xiangyi Ma⁺, Shixuan Wang⁺*

*Contributed equally.

⁺Joint corresponding authors

Department of Obstetrics and Gynecology, Tongji Hospital, Tongji Medical College, Huazhong University of Science and Technology, Wuhan, 430030, China.

(Pengfei Cui PhD, Zhe Chen MD, Tian Wang PhD, Jun Dai PhD, Jinjin Zhang PhD, Ting Ding PhD, Jingjing Jiang MS, Jia Liu PhD, Cong Zhang MD, Wanying Shan MD, Sheng Wang PhD, Prof Xiangyi Ma PhD and Prof Shixuan Wang PhD).

Department of Pathogen Biology, School of Basic Medicine, Huazhong University of Science and Technology, Wuhan, 430030, China (Prof Yueguang Rong PhD).

Department of Epidemiology and Biostatistics, Key Laboratory for Environment and Health, School of Public Health, Tongji Medical College, Huazhong University of Sciences and Technology, Wuhan, 430030, China (Prof Jiang Chang PhD and Prof Xiaoping Miao PhD).

Correspondence to: Prof Shixuan Wang, Department of Obstetrics and Gynecology, Tongji Hospital, Wuhan 430030, China, sxwang@tjh.tjmu.edu.cn

or Prof Xiangyi Ma, Department of Obstetrics and Gynecology, Tongji Hospital, Wuhan 430030, China, xyma@tjh.tjmu.edu.cn

Summary:

Background: As of February 26, 2020, SARS-CoV-2 has infected more than 78190 people and caused 2718 deaths in China. This virus rapidly spreads to 33 countries worldwide. Thus, in order to effectively block its transmission, it is urgent to uncover all of the possible transmission routes of SARS-CoV-2.

Methods: From January 28 to February 18, 2020, 35 female patients diagnosed with COVID-19 in Tongji Hospital were included in this descriptive study. The gynecologic history, clinical characteristics, laboratory findings and chest computed tomography (CT) of all patients were recorded in detail. To examine whether there is sexual transmission, we employed real-time polymerase chain reaction testing (RT-PCR) to detect SARS-CoV-2 in vaginal environment (including vaginal discharge, cervical or vaginal residual exfoliated cells) and anal swab samples, and inquired recent sexual behaviors from the patients.

Findings: The average age of the 35 patients with COVID-19 was 61.5 years old (SD =11.2). Over 50% patients infected with SARS-CoV-2 had chronic diseases. We tested the vaginal environment and anal swabs from the 35 female patients with COVID-19 and found that only an anal swab sample from one patient was positive for SARS-CoV-2. All the samples from vaginal environment were negative for SARS-CoV-2. Additionally, two female patients had sex with their partners during a possible SARS-CoV-2 infection incubation period, while one patient's partner was uninfected and the other patient's partner was diagnosed with COVID-19 (after the diagnosis of the female patient).

Key words: SARS-COV-2, COVID-19, sex transmission, vertical transmission, vaginal environment, descriptive study

Interpretation: The results from this study show no evidence of sexual transmission of SARS-CoV-2. No positive RT-PCR result was found in the vaginal environment perhaps due to the lack of ACE2 expression, which is the receptor of SARS-CoV-2, in the vagina and cervix tissues (human protein atlas).

Funding: This work was financially supported by the Clinical Research Pilot Project of Tongji hospital, Huazhong University of Science and Technology (No. 2019CR205).

Introduction:

A novel coronavirus (severe acute respiratory syndrome coronavirus 2, SARS-CoV-2) infectious disease has erupted in Wuhan, Hubei Province since December 2019^{1,2}. It has spread rapidly throughout entire China. Up to 20:00 on February 26, 2020, the total number of confirmed cases of COVID-19 in China has reached 78190 with 2718 deaths³. Among the infected proportion, 48.6% are females⁴. Internationally, cases of COVID-19 have been reported in 33 countries, especially in Japan, South Korea and Singapore, with rapidly increasing trend. SARS-CoV-2 is so widely spread, leading to injury of multiple organs and deaths. Therefore, it is crucially important to identify the transmission routes of SARS-CoV-2 in order to prevent its further spreading.

Previously in 2003, there was an outbreak of SARS-CoV in China⁵. The main transmission route of SARS-CoV was via respiratory droplets, although the potential of transmission by opportunistic airborne routes and environmental factors was also reported^{6,7}. In addition, SARS-CoV was detected in urine, feces and tears of some SARS-CoV infected patients. It was confirmed that SARS-CoV could be transmitted through fecal-oral and contiguous pathways^{6,8}. Thus far, there has not been a report to show if SARS-CoV can be transmitted through sexual transmission. Therefore, based on the transmission route of SARS-CoV, current preventive measures, including maintaining good personal and environmental health, and implementing strict contact and droplet prevention measures in the community, can effectively prevent the spread of SARS-CoV⁶. However, different from SARS-CoV, MERS-CoV, another virus of the same coronavirus family, which was first reported in Saudi Arabia in 2012 and later spread to several other countries^{9,10}, was transmitted through large droplets and close contact, although the possibility of air transmission or dust mite transmission was not ruled out⁹. Also, it is not clear whether MERS-CoV is sexually transmitted. The World Health Organization (WHO) has provided recommendations for the prevention of MERS-CoV, mainly including droplet and contact precautions¹¹. Interestingly, HCoV-229E in the coronavirus family was

detected in the maternal vagina and also found in the gastric swab samples of newborns¹². This makes the sexual transmission of this type of virus possible although there is no direct evidence to prove it. Therefore, it also remains possible that SARS-CoV-2, as a new type of coronavirus, could be sexually transmitted.

Currently, the main known transmission route of SARS-CoV-2 is through respiratory air droplets. The other routes could be through secretory liquids, such as from eyes^{13,14}. SARS-CoV-2 was shown to exist in the feces of patients with COVID-19, suggesting that fecal-oral transmission of SARS-CoV-2 is possible¹⁵. Although vertical transmission from mothers to infants has been excluded¹⁶, it still remains unknown whether SARS-CoV-2 has other transmission routes from person to person. To explore the possibility of sexual transmission of this contagious virus, we performed RT-PCR analysis of SARS-CoV-2 in the anal swab samples and vaginal environment samples (including cervical or vaginal residue exfoliated cells, vaginal discharge) collected from 35 female patients with COVID-19 and inquired their recent sexual behavior. As described below, our study indicates that there is low risk of sexual transmission of this virus from person to person, as we did not detect SARS-CoV-2 in vaginal environment.

Methods

Study design and patients

In this study, we recruited 35 female COVID-19 patients from January 28 to February 18, 2020 in three branches of Tongji Hospital, Sino-French New City Branch (16 cases), Optical Valley Branch (16 cases) and Hankou main campus (3 cases) respectively, which are located in different geographical areas of Wuhan. Cases of COVID-19 were diagnosed based on the New Coronavirus Pneumonia Prevention and Control Program (5th edition) published by the National Health Commission of China¹⁷. Twenty-seven patients with COVID-19 were tested SARS-CoV-2 positive by RT-PCR analysis on samples from the respiratory tract, and eight patients were diagnosed as clinically confirmed cases based on the 5th guidance mentioned above according to epidemiological history, symptoms and chest CT. This study was reviewed and approved by the Medical Ethical Committee of Tongji Hospital of Huazhong University of Science and Technology (TJ-IRB20200208). The trial has been registered in Chinese Clinical Trial Registry (ChiCTR2000029981). Written informed consent was obtained from each enrolled patient.

Data collection

The gynecologic history, clinical characteristics, laboratory findings, chest computed tomography (CT) and outcome data were obtained from patients' records. To ascertain the authenticity and integrity of the gynecologic history, especially the sexual behavior history, we also directly communicated with patients or their families. All information was obtained and curated with a standardized data collection form. Two researchers also independently reviewed the data collection forms to double check the data.

Vaginal discharge samples from patients with COVID-19 were obtained from posterior fornix of vagina according to the protocol of the virus sampling kit (Yocon, Beijing, China). Exfoliated cell samples were collected from cervix or vaginal residue for patients undergoing hysterectomy according to the protocol of Thinprep cytologic test (Hologic, Massachusetts, USA)¹⁸. Throat swab and anal swab samples were collected respectively from the upper respiratory tract and perianal tissues following the protocol of the virus sampling kit mentioned above. Diagnosis of COVID-19 was based on SARS-CoV-2 test of throat swab. Vaginal discharge, exfoliated cell and anal swab samples were collected about one week since diagnosed. All samples were tested for SARS-CoV-2 with the Chinese Center for Disease Control and Prevention (CDC) recommended Kit (DAAN GENE, Guangzhou, China or BioPerfectus Technologies, Jiangsu, China), following WHO guidelines for real-time RT-PCR. RT-PCR testing was used to detect COVID-19 according to the recommended protocol. The samples were processed simultaneously at the Department of Clinical Laboratory of Tongji Hospital and Wuhan KDWS Biological Technology Co, Ltd. Sample collection, processing, and laboratory testing complied with WHO guidance. Positive confirmatory cases of COVID-19 infection were defined as those with a positive test result from either laboratory.

Statistical analysis

SPSS software, version 20.0, was used for statistical analysis. The continuous measurements were presented as mean (SD) if they were normally distributed or median (IQR) if they were not, and categorical variables as count (%). For laboratory results, we also assessed whether the measurements were outside the normal range.

Role of the funding source

This work was financially supported by the Clinical Research Pilot Project of Tongji hospital, Huazhong University of Science and Technology (No. 2019CR205). The corresponding authors agreed to take responsibility for all the work to ensure the accuracy or integrity of any part of the work, and had final responsibility for the decision to submit for publication. The final version of the article was approved by all authors.

Results

35 patients with COVID-19 were recruited in this study, with a mean age of 61.5 years (SD =11.2; Table 1). Most patients were natives of Wuhan (n =29, 82.9%), and only one had directly contacted with Huanan seafood market. The most common chronic medical diseases were hypertension (n =12, 34.3%) and diabetes (n =7, 20%). As for gynecological diseases, uterine fibroids were mentioned the most (n =13, 37.1%). Other diseases included cervical intraepithelial neoplasia (CIN) III, endometrial atypical hyperplasia, and endometrial cancer, with one patient for each disease. Most patients had entered menopause (n =28, 80%). For the rest 7 patients, except for 1 puerperal woman who had a cesarean section 2 days before with breast milk and neonatal throat swab SARS-CoV-2 negative, the remaining 6 patients still had menstruation, in which half of them complained of decreased menstrual flow.

The most common first symptom was fever (n =25, 71.4%). Due to the special diagnostic principles in Wuhan; only 27 (77.1%) patients were tested positive for SARS-CoV-2 (Throat swab). The remaining 8 patients were clinically diagnosed depend on the images of CT scan (Table2). All patients in this study were classified at admission, including mild group (n =1, 2.9%), severe group (n =32, 91.4%) and critical group (n =2, 5.7%, Table 2). After admission, the white blood cell count was decreased in 5 (14.3%) patients and increased in 4 patients (11.4%, Table 3). 16 (45.7%) patients had a lymphocyte count reduction, while 18 patients (51.4%) had a lymphocyte ratio below the normal range. C-reactive protein (CRP) level was increased in 14 (40%) patients. The erythrocyte sedimentation rate accelerated in 19 (54.3%) patients. 10 (28.6%) patients had increased aspartate transaminase (AST), and 13 (37.1%) patients had elevated alanine transaminase (ALT). The serum

potassium was decreased in 5 patients (14.3%) and increased in 3 patients (8.6%). Five (14.3%) patients had decreased serum sodium. 28 of the 35 patients were tested for multiple cytokines, including Interleukin1 β (IL-1 β), Interleukin2R (IL-2R), Interleukin6 (IL-6), Interleukin8 (IL-8), Interleukin 10 (IL-10) and Tumor necrosis factor α (TNF- α). IL-2R, IL-6, and TNF- α were higher than the normal range in half or more patients, respectively. Notably, 9 (32.1%) patients' level of IL-2R, IL-6, and TNF- α increased altogether. Every patient showed typical findings of chest CT images-multiple patchy ground-glass shadows in lungs. Typical images from each group were demonstrated (Figure 1).

Most patients received antiviral and antibiotic treatment (n =33, 94.3% and n =29, 82.9% respectively), 13 (37.1%) patients received glucocorticoids (Table 2). 9 (25.7%) patients received intravenous immunoglobulin therapy. 3 (8.6%) patients received anticoagulant therapy. Oxygen therapy was used for every patient. Most of the patients received oxygen by mask or nasal catheter. Only 2 (5.7%) patients received non-invasive ventilation with bilevel positive airway pressure (BiPAP), and they were free of BiPAP on the day we collected the samples. No patient received Invasive ventilation (Table 2). By the end of Feb 22, 1 (2.9%) patient had been discharged, and all other patients were still in the hospital (Table 1).

The infection rate for the 35 female patients' sexual partner was 42.9%, but only 2 patients, Patient 14 and 19, admitted having sexual behavior with their partners from 14 days before the onset of first symptoms to the day we collected samples (Table 1, Table 4, Figure 2). The detailed timelines are exhibited (Figure 2). Both patients use intrauterine device for contraception. Patient 14 was 48 years old. She had regular sex behavior during the 14 days before first symptom (Figure 2). While stopped since she suffered from fever with a highest temperature above 39.0 $^{\circ}$ C. Patient 19 was 41 years old. Her duration of sex behavior was longer than patient 14, which ended at the day she was diagnosed by throat swab. Her first symptom was also fever, but the highest temperature (38.9 $^{\circ}$ C) is lower than patient 14 and her symptoms were mild in need of lower flow of oxygen (Figure 2). Patient 19's partner was clinical diagnosed with COVID-19, while patient 14's was not.

Analysis of SARS-CoV-2 was conducted using the vaginal environment and anal swab samples of 35 female patients with COVID-19. All the vaginal environment samples (35 cases in total) were negative, but one patient (35 cases in total) had positive anal swab sample (Table 4), which was from a 64-year-old female of Wuhan, who had entered menopause for 10 years. Her husband was also diagnosed with COVID-19, while they had no sexual behavior from 14 days before the first of symptoms to the day samples collected.

DISCUSSION

The evidence so far suggests that respiratory droplets and intimate contact are the two main transmission routes of SARS-CoV-2¹⁹⁻²². Aerosol transmission also exists in relatively closed unventilated space²³. Fecal-oral transmission and vertical transmission have not been verified^{16,23}, although scientists have found that SARS-CoV-2 is positive in feces and blood¹⁵, while negative in amniotic fluid, cord blood, neonatal throat swab, and breastmilk¹⁶. In addition, asymptomatic infected persons are potential sources of infection, with the long incubation period, increasing the difficulty in epidemic prevention and control²⁴. Therefore, the transmission of SARS-CoV-2 is still worth exploring.

Herein, we reported a cohort of 35 female patients, most of which were at an elder age, and had already entered menopause. Additionally, over 54.3% (19/35) patients infected with SARS-CoV-2 had chronic diseases including cancer (Table 1), are more susceptible due to the weaker immune function²⁵, in accordance with SARS-CoV and MERS-CoV⁵. There was a special patient undergoing caesarean section due to scar uterus contractions. We obtained the vaginal secretions on the second day after operation and found the SARS-CoV-2 negative similar to breastmilk, anal swab and neonatal throat swab samples. Up to now, no evidence suggested that pregnant women need caesarean section merely because of SARS-CoV-2 positive in mother's throat swab¹⁶, so we cannot deny the choice of natural delivery of COVID-19 pregnant women.

Our study showed that female patients with COVID-19 have a similar trait of clinical characteristics to the patients reported recently. Most common first symptom was fever (25, 71.4%). Lymphopenia was a common phenomenon, suggesting that

SARS-CoV-2 might primarily target lymphocytes, like SARS-CoV⁵. IL-2R, IL6, and TNF- α were above the normal range in half patients. A cytokine storm was induced after SARS-CoV-2 infection, followed by large amounts of immune responses and changes in immune cells such as lymphocytes, which was same as people infected SARS-CoV^{5,26}. Oxygen therapy was used for every patient to improve hypoxia. Most patients received antiviral treatment and antibiotic treatment to inhibit virus replication and prevent bacterial co-infection. Glucocorticoids and immunoglobulin therapy used in some patients is in order to inhibit inflammatory response based on “cytokine storm” theory. However, some researchers suggested that the use of antibiotics and glucocorticoids are not good for patients due to lacking strong evidence²¹.

Sex behavior is a kind of the special intimate contacts involving hugs, kisses, and oral/anal sex, et al. Researchers have found SARS-CoV-2 positive in throat swab, droplet, anal swab, saliva, urine, and tear samples^{13,23,27}, whether female vaginal environment contains SARS-CoV-2 triggered our interest. We collected 105 samples from 35 patients to detect the SARS-CoV-2, including vaginal discharge, cervical or vaginal residue exfoliated cells and anal swap, It is worth noting that only an anal swab sample from one patient was positive for SARS-CoV-2, which is in consistence with the possibility of fecal-oral transmission reported previously²³. The unexpected results from the vaginal environment may due to the negative expression of ACE2, the receptor of SARS-Cov-2, in the vagina and cervix²⁸.

Additionally, for two female patients admitted having sexual behaviors with their partners, one patient’s partner was not infected as the sexual behaviors occurred within 14 days before the onset of COVID-19 symptoms for the patient and the other patient’s partner was diagnosed with COVID-19 as the sexual behaviors occurred before the patient was diagnosis (including 14 days before the first symptom of COVID-19 ,Figure 2). We cannot conclude that the infected husband is transmitted by her through sex behavior, as the samples of her vaginal environment anal swab samples were all SARS-CoV-2 free. However, no doubt she was the NO.1 suspect of his infection as she was the person with whom her husband contacted most frequently. She may transfer the virus to him by daily contact. And sex behavior might be the most intimate contact between them. So, the possibility that he got infected during their sex behavior was fairly high, or the other way around. Only one patient admitted

having sex behavior in the incubation period and her husband was diagnosed soon, but the infection rate of the sexual partner of the 35 patients was up to 42.9%, which is not a low proportion. Given to the fact that females are shy to talk about sex in China, it was probably many patients had hidden their sex history. So, sex partner got infected might be more than one in the 42.9% group. One report recently showed a familial cluster of 5 patients with COVID-19 pneumonia had contact before their symptom onset with an asymptomatic family member with normal chest CT findings and SARS-CoV-2 negative who had traveled from the epidemic center of Wuhan²⁴. Our data also indicate the fact that asymptomatic persons are potential sources of SARS-CoV-2 infection, which is line with this report.

Transmission between family members occurred in 13-21% of MERS cases and 22-39% of SARS cases⁵. Moreover, many patients with SARS or MERS were infected through super-spreaders⁵. Investigators had reported that the main route of SARS-CoV transmission was via respiratory droplets, and may also be transmitted through fecal-oral and contiguous pathways²³. Unlike SARS-CoV, the main transmission route of MERS-CoV was large droplets and contact. It is still not clear whether SARS-CoV or MERS-CoV is transmitted through sexual transmission. Based on the transmission route of SARS-CoV and MERS-CoV, preventive measures, including maintaining good personal and environmental health, and implementing strict contact and droplet prevention measures in the community, can effectively prevent the spread of SARS-CoV and MERS-CoV. In this study, no evidence indicated that SARS-CoV-2 has a route of sex transmission. As SARS-CoV-2 was found positive in droplets, tears, urine, feces, saliva, and blood, intimate contact can transmit the virus in a variety of ways, we strongly suggest that people in the affected areas avoid sex behavior and maintain personal and environmental sanitary including washing hands frequently, wearing face mask and toilet sanitation.

Our study has several limitations. First, the sample size was relatively small in which only 35 patients with SARS-CoV-2 positive or CT suspected was included; much more patients including sexually active women are needed to confirm our findings in the future. Second, samples from spouse of the patients enrolled is missing, including anal swabs, semen, and urethral orifice swabs. Nevertheless, the data in our study revealed the epidemiological and clinical characteristics of female patients with

COVID-19 in a new prospective. In summary, though no evidence was found in this study that SARS-CoV-2 can be transmitted by sex behavior. Considering the complexity of sexual behavior, the asymptomatic persons are potential sources of infection and intimate contact as a transmission route, the risks of sex behavior during SARS-CoV-2 epidemic should not be ignored.

Contributors

PC, X Ma, and SW made substantial contributions to the study concept and design. PC, ZC, TW and JD took responsibility for obtaining written consent from patients, obtaining ethical approval, collecting samples, and confirming data accuracy. CZ, WS, SW and TD participated in data collection. JL was in charge of the laboratory tasks, including sample processing and detection. PC, ZC, TW and JD contributed equally and share first authorship. X Ma and SW contributed equally to this article had full access to all of the data in the study and take responsibility for the integrity of the data and the accuracy of the data analysis. PC, ZC, TW and JD participated in drafting the manuscript, and revising it on the basis of reviewers' comments. ZC, JD and JJ made substantial contributions to data acquisition, analysis, and interpretation. SW, X Ma, JC, YR and X Miao revised the final manuscript.

Declaration of interests

We declare no competing interests.

Data sharing

With the permission of the corresponding authors, we can provide participant data without names and identifiers, but not the study protocol, statistical analysis plan, or informed consent form. Data can be provided after the article is published. Once the data can be made public, the research team will provide an email address for communication. The corresponding authors have the right to decide whether to share the data or not based on the research objectives and plan provided.

Acknowledgments

This study was supported by the Clinical Research Pilot Project of Tongji hospital, Huazhong University of Science and Technology (No. 2019CR205). We thank all

patients involved in the study.

References

1. Zhu N, Zhang D, Wang W, et al. A Novel Coronavirus from Patients with Pneumonia in China, 2019. *N Engl J Med* 2020; 382(8): 727-33. DOI: 10.1056/NEJMoa2001017
2. Hui DS, E IA, Madani TA, et al. The continuing 2019-nCoV epidemic threat of novel coronaviruses to global health-The latest 2019 novel coronavirus outbreak in Wuhan, China. *Int J Infect Dis* 2020; 91: 264-6. <https://doi.org/10.1016/j.ijid.2020.01.009>.
3. Chinese Center for Disease Control and Prevention. Distribution of novel coronavirus pneumonia. 2020, <http://2019ncov.chinacdc.cn/2019-nCoV/> (accessed Feb 26,2020).
4. The Novel Coronavirus Pneumonia Emergency Response Epidemiology Team. The Epidemiological Characteristics of an Outbreak of 2019 Novel Coronavirus Diseases (COVID-19)-China, 2020. *China CDC Weekly*, 2020, 2(8): 113-122.DOI: 10.3760/cma.j.issn.0254-6450.2020.02.003.
5. de Wit E, van Doremalen N, Falzarano D, Munster VJ. SARS and MERS: recent insights into emerging coronaviruses. *Nat Rev Microbiol* 2016; 14(8): 523-34. doi:10.1038/nrmicro.2016.81.
6. Peiris JS, Yuen KY, Osterhaus AD, Stöhr K. The severe acute respiratory syndrome. *N Engl J Med*. 2003, 349(25): 2431-41. DOI: 10.1056/NEJMoa2001316.
7. Booth TF, Kournikakis B, Bastien N, et al. Detection of airborne severe acute respiratory syndrome (SARS) coronavirus and environmental contamination in SARS outbreak units. *J Infect Dis*. 2005, 191(9):1472-7. <https://doi.org/10.1086/429634>.
8. Loon SC, Teoh SC, Oon LL, et al. The severe acute respiratory syndrome coronavirus in tears. *Br J Ophthalmol* 2004; 88(7): 861-3. DOI: 10.1136/bjo.2003.035931.
9. Zumla A, Hui DS, Perlman S. Middle East respiratory syndrome. *The Lancet* 2015; 386(9997): 995-1007. [http://dx.doi.org/10.1016/S0140-6736\(15\)60454-8](http://dx.doi.org/10.1016/S0140-6736(15)60454-8).
10. WHO. Middle East respiratory syndrome coronavirus (MERS-CoV). 2019. [https://www.who.int/news-room/fact-sheets/detail/middle-east-respiratory-syndrome-coronavirus-\(mers-cov\)](https://www.who.int/news-room/fact-sheets/detail/middle-east-respiratory-syndrome-coronavirus-(mers-cov)).
11. WHO. Update on MERS-CoV transmission from animals to humans, and interim recommendations for at-risk groups. 2014. http://www.who.int/csr/disease/coronavirus_infections/MERS_CoV_RA_20140613.pdf?ua=1 (accessed Feb 16, 2020).
12. Gagneur A, Dirson E, Audebert S, et al. Materno-fetal transmission of human coronaviruses: a prospective pilot study. *Eur J Clin Microbiol Infect Dis* 2008; 27(9):

863-6. DOI 10.1007/s10096-008-0505-7.

13. Lu C-w, Liu X-f, Jia Z-f. 2019-nCoV transmission through the ocular surface must not be ignored. *The Lancet* 2020; 395(10224): e39. [https://doi.org/10.1016/S0140-6736\(20\)30313-5](https://doi.org/10.1016/S0140-6736(20)30313-5).

14. National Health Commission of China. New coronavirus pneumonia prevention and control program (6th edn). Feb 18, 2020. <http://www.nhc.gov.cn/yzygj/s7653p/202002/8334a8326dd94d329df351d7da8aefc2/files/b218cfb1bc54639af227f922bf6b817.pdf>

15. Zhang W, Du RH, Li B, et al. Molecular and serological investigation of 2019-nCoV infected patients: implication of multiple shedding routes. *Emerg Microbes Infect* 2020; 9(1): 386-9. <https://doi.org/10.1080/22221751.2020.1729071>.

16. Chen H, Guo J, Wang C, et al. Clinical characteristics and intrauterine vertical transmission potential of COVID-19 infection in nine pregnant women: a retrospective review of medical records. *The Lancet* 2020. [https://doi.org/10.1016/S0140-6736\(20\)30360-3](https://doi.org/10.1016/S0140-6736(20)30360-3).

17. National Health Commission of China. New coronavirus pneumonia prevention and control program (6th edn) 2020. <http://www.nhc.gov.cn/yzygj/s7653p/202002/d4b895337e19445f8d728fcaf1e3e13a/files/ab6bec7f93e64e7f998d802991203cd6.pdf> (accessed Feb. 8th, 2020; in Chinese).

18. Teodosiu O IG, Broniński A, Popescu G, Athanasie P, Ibric L, Păun L, Toma E, Fischbach A. Extracutaneous localizations of parainfluenza viruses. *Virologie* 1980; Jul-Sep;31(3): 227-9.

19. Huang C, Wang Y, Li X, et al. Clinical features of patients infected with 2019 novel coronavirus in Wuhan, China. *The Lancet* 2020; 395(10223): 497-506. [https://doi.org/10.1016/S0140-6736\(20\)30183-5](https://doi.org/10.1016/S0140-6736(20)30183-5).

20. Chen N, Zhou M, Dong X, et al. Epidemiological and clinical characteristics of 99 cases of 2019 novel coronavirus pneumonia in Wuhan, China: a descriptive study. *The Lancet* 2020; 395(10223): 507-13. [https://doi.org/10.1016/S0140-6736\(20\)30211-7](https://doi.org/10.1016/S0140-6736(20)30211-7).

21. Wang D, Hu B, Hu C, et al. Clinical Characteristics of 138 Hospitalized Patients With 2019 Novel Coronavirus-Infected Pneumonia in Wuhan, China. *JAMA* 2020. doi:10.1001/jama.2020.1585.

22. Li Q, Guan X, Wu P, et al. Early Transmission Dynamics in Wuhan, China, of Novel Coronavirus-Infected Pneumonia. *N Engl J Med* 2020. 13. [https://doi.org/10.1016/S0140-6736\(20\)30211-7](https://doi.org/10.1016/S0140-6736(20)30211-7).

23. Guan W-j, Ni Z-y, Hu Y, et al. Clinical characteristics of 2019 novel coronavirus infection in China. medRxiv. 2020. DOI: <https://doi.org/10.1101/2020.02.06.20020974>.
<https://www.medrxiv.org/content/10.1101/2020.02.06.20020974v1.full.pdf>

24. Bai Y, Yao L, Wei T, et al. Presumed Asymptomatic Carrier Transmission of COVID-19. JAMA 2020. DOI: 10.1001/jama.2020.2565.
25. Liang W, Guan W, Chen R, et al. Cancer patients in SARS-CoV-2 infection: a nationwide analysis in China. The Lancet Oncology 2020. [https://doi.org/10.1016/S1470-2045\(20\)30096-6](https://doi.org/10.1016/S1470-2045(20)30096-6).
26. Liu J, Zheng X, Tong Q, et al. Overlapping and discrete aspects of the pathology and pathogenesis of the emerging human pathogenic coronaviruses SARS-CoV, MERS-CoV, and 2019-nCoV. J Med Virol 2020. <https://onlinelibrary.wiley.com/doi/pdf/10.1002/jmv.25709>. (accessed Feb 16, 2020).
27. To KK, Tsang OT, Chik-Yan Yip C, et al. Consistent detection of 2019 novel coronavirus in saliva. Clin Infect Dis 2020. <https://doi.org/10.1093/cid/ciaa149>.
28. Uhlen M, Fagerberg L, Hallstrom BM, et al. Proteomics. Tissue-based map of the human proteome. Science 2015; 347(6220): 1260419. DOI: 10.1126/science.1260419.

	Patients (n =35)
Age, years	
Mean (SD)	61·5 (11·2)
Range	37-88
<45	4 (11·4%)
45-55	5 (14·2%)
>55	26 (74·3%)
Occupation	
Retired personnel	26 (74·3%)
Professional/technical staff	4 (11·4%)
Agricultural worker	2 (5·7%)
Business/service worker	3 (8·6%)
Wuhan native	29 (82·9%)
Exposure to Huanan seafood market	1 (2·9%)
Chronic medical illness	
Hypertension	12 (34·3%)
Diabetes	7 (20·0%)
Coronary heart disease	3 (8·6%)
Lymphoma	1 (2·9%)
With any illness above	19(54·3%)
Gynecological disease	
Uterine fibroids	13 (37·1%)
CIN III	1 (2·9%)
Endometrial atypical hyperplasia	1 (2·9%)
Endometrial cancer	1 (2·9%)
None	19 (54·3%)
Menstruation	
Menopause	28 (80%)
Increased menstrual flow	0 (0%)
Decreased menstrual flow	3 (8·6%)
Constant menstrual flow	3 (8·6%)
Puerpera*	1 (2·9%)
Sexual partner infection	15 (42·9%)
Admitted sex behavior	2 (5·7%)
Clinical outcomes	
Remain in hospital	34 (97·1%)
Discharged	1 (2·9%)
Died	0 (0%)

Data are n (%) unless specified otherwise.

***Breast milk and neonatal throat swab samples was tested negative for SARS-CoV-2.**

†Time window: from 14 days before first symptoms to the day we collected samples.

Table 1: Demographics, baseline characteristics, and clinical outcomes of 35 patients

	Patients (n =35)
First symptom	
Fever	25 (71·4%)
Muscle ache	4 (11·4%)
Cough	4 (11·4%)
Fatigue	1 (2·9%)
Shortness of breath	1 (2·9%)
SARS-COV-2 (Throat swab) positive cases	27 (77·1%)
Clinically diagnosed cases	8 (22·9%)
Clinical group	
Mild	1 (2·9%)
Severe	32 (91·4%)
Critical	2 (5·7%)
Treatment	
Antiviral treatment	33 (94·3%)
Antibiotic treatment	29 (82·9%)
Glucocorticoids	13 (37·1%)
Intravenous immunoglobulin therapy	9 (25·7%)
Anticoagulant therapy	3 (8·6%)
Oxygen therapy	
Face mask/nasal catheter	33 (94·3%)
BiPAP	2 (5·7%)
Invasive ventilation	0 (0%)

Table 2: Clinical characteristics and treatment

	Patients (n =35)
ITEM (Unit, Normal range)	
White blood cell count ($\times 10^9/L$, 3.5-9.5)	6.4(3.1)
Decreased	5(14.3%)
Increased	4(11.4%)
Lymphocyte count ($\times 10^9/L$, 1.1-3.2)	1.1(0.7-1.9)
Decreased	16(45.7%)
Increased	3(8.6%)
Lymphocyte ratio (% , 20.0-50.0)	19.7(8.9)
Decreased	18(51.4%)
C-reactive protein concentration (mg/L, <10)	33(2.0-64.9)
Increased	14(40%)
Erythrocyte sedimentation rate (mm/H, <20)	47.2(33.0)
Increased	19(54.3%)
Procalcitonin (ng/mL, <0.5)	0.06(0.04-0.09)
0.5-2	2(5.7%)
≥ 2	0(0%)
Alanine aminotransferase (U/L; ≤ 33)	26(18-41)
Increased	10(28.6%)
Aspartate aminotransferase (U/L; ≤ 32)	25(13-37)
Increased	13(37.1%)
Creatinine ($\mu\text{mol/L}$, 45-84)	58(53-68)
Increased	1(2.9%)
Blood potassium (mmol/L, 3.5-5.1)	3.9(3.7-4.3)
Decreased	5(14.3%)
Increased	3(8.6%)
Blood sodium (mmol/L, 136-145)	138.8(137.1-140.8)
Decreased	5(14.3%)
	Patients (n =28)
Interleukin1β (pg/ml, <50)	<5 (<5 - <5)
Increased	5 (17.9%)
Interleukin2R (u/ml, 223-710)	695.0 (458.5 -1038.8)
Increased	14 (50%)
Interleukin6 (pg/ml), <7)	10.6 (2.5 -29.1)
Increased	15 (53.6%)
Interleukin8 (pg/ml, <62)	11.1 (5.9-21.8)
Increased	0 (0%)
Interleukin 10 (pg/ml, <9.1)	5.0 (5.0-7.2)
Increased	2 (7.14%)
Tumor necrosis factor α (pg/ml, <8.1)	8.1 (6.6-10.2)
Increased	14 (50%)
Interleukin2R, Interleukin6, and Tumor necrosis factor α increased	9 (32.1%)

Data are n (%), n/N (%), mean (SD), and median (IQR). Decreased means below the lower limit of the normal range and increased means over the upper limit of the normal range.

Number of cases were 35 in blood routine and biochemistry tests, 28 in cytokines tests.

Table 3: Laboratory results

Patient NO.	Exfoliated cell samples from cervix or vaginal residue*	Vaginal discharge specimens*	Anal swab samples*	Throat swab samples*	Sex behavior†	Sexual partner infection‡
1	-	-	-	+	-	+
2	-	-	-	+	-	-
3	-	-	-	+	-	-
4	-	-	-	+	-	+
5	-	-	-	-	-	-
6	-	-	-	+	-	+
7	-	-	-	+	-	-
8	-	-	-	+	-	-
9	-	-	-	+	-	-
10	-	-	-	+	-	-
11	-	-	-	+	-	-
12	-	-	-	-	-	-
13	-	-	-	+	-	-
14	-	-	-	+	+	-
15	-	-	-	-	-	-
16	-	-	-	+	-	-
17	-	-	-	-	-	-
18	-	-	-	+	-	-
19	-	-	-	+	+	+
20	-	-	-	+	-	+
21	-	-	-	-	-	+
22	-	-	-	-	-	+
23	-	-	-	-	-	-
24	-	-	-	-	-	-
25	-	-	-	+	-	-
26	-	-	-	+	-	+
27	-	-	-	+	-	+
28	-	-	-	+	-	+
29	-	-	-	+	-	+
30	-	-	+	+	-	+
31	-	-	-	+	-	+
32	-	-	-	+	-	+
33	-	-	-	+	-	-
34	-	-	-	+	-	-
35	-	-	-	+	-	+

* “+” stands for positive results, “-” stands for negative results.

†Time window: from 14 days before first symptoms to the day we collected samples. “+” stands for had sex behavior recently, “-” stands for didn’t have sex behavior recently.

‡ “+” stands for infected, “-” stands for not infected.

Table 4: SARS-CoV-2 Test by RT-PCR for Exfoliated cells samples from cervix or vaginal residue, Vaginal discharge, anal swab samples. Recent sex behavior and sexual partner infection of every patient.

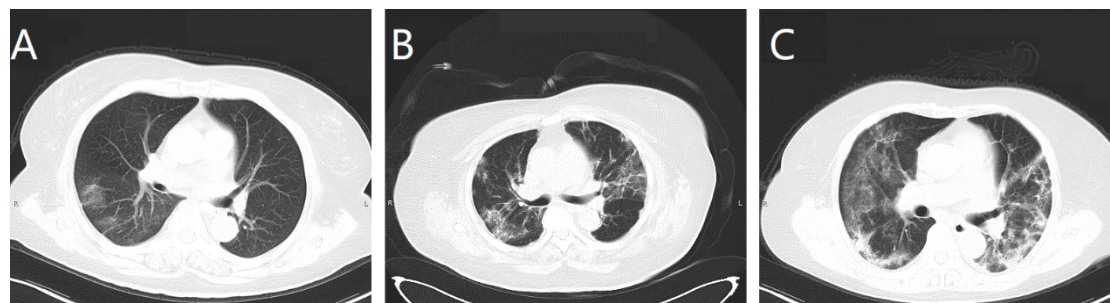


Figure 1: Typical CT images from each group. (A) Patient was from the mild group; this image shows local right-sided ground-glass opacity. (B) Patient was from the severe group, bilateral multiple ground-glass opacities were showed. (C) Patient was from the critical group, double-sided patchy consolidation and multiple bilateral ground-glass opacities were showed.

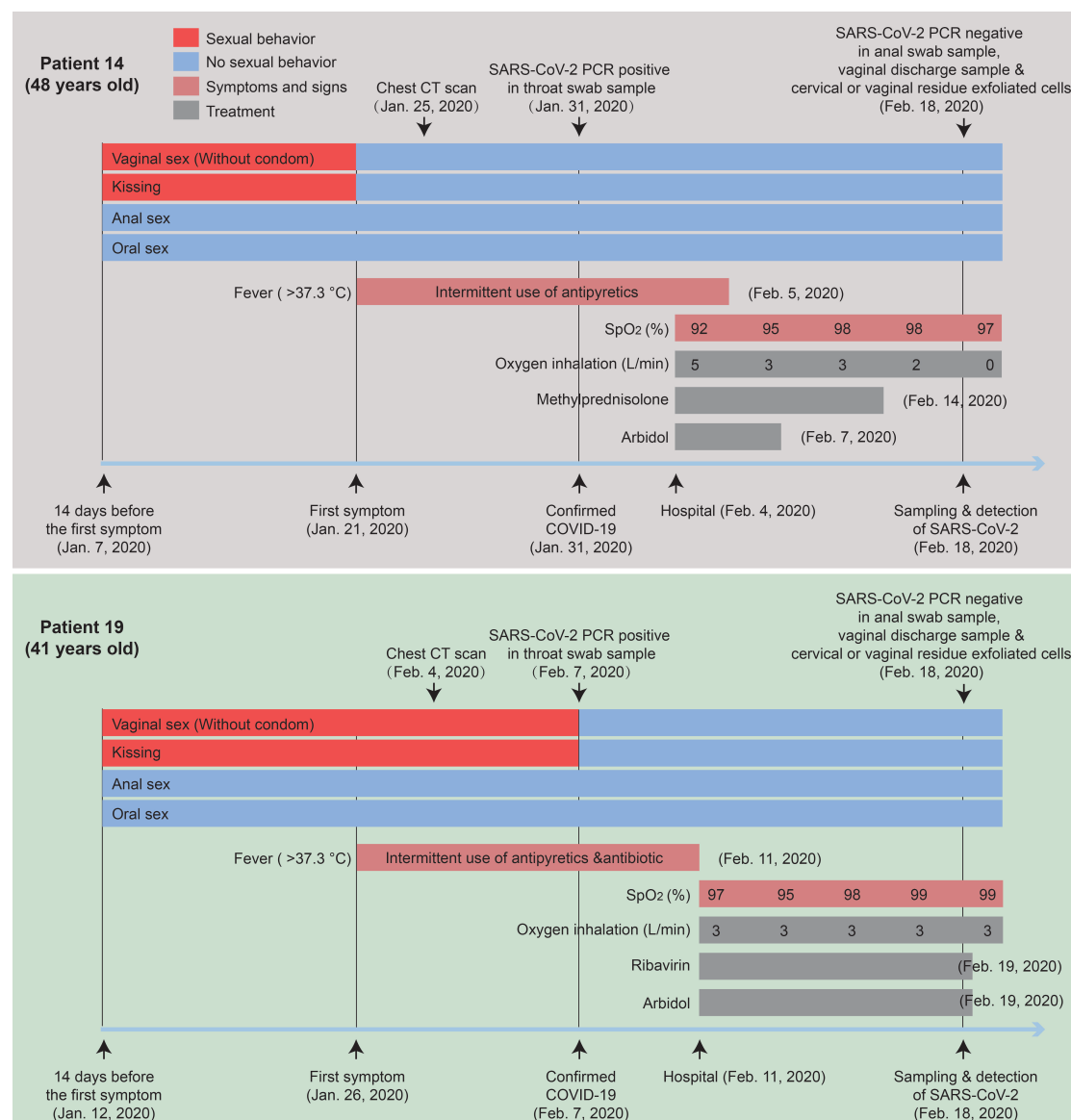


Figure 2: Sexual behavior history, diagnosis and treatment process of patient 14 and patient 19 with COVID-19.