

1 **Polygenic risk for Alzheimer’s disease predicts sleep slow-waves and daytime**
2 **sleepiness in youth**

3

4 Short title: **Linking Alzheimer’s disease to sleep in youth**

5

6 Vincenzo Muto^{1,2#}, Ekaterina Koshmanova^{1#}, Pouya Ghaemmaghami^{1#}, Mathieu Jaspar^{1,2,3},
7 Christelle Meyer^{1,2}, Mahmoud Elansary⁴, Maxime Van Egroo¹, Daphne Chylinski¹, Christian
8 Berthomier⁵, Marie Brandewinder⁵, Charlotte Mouraux¹, Christina Schmidt^{1,2}, Grégory
9 Hammad¹, Wouter Coppieters⁴, Naima Ahariz⁴, Christian Degueldre¹, André Luxen¹, Eric
10 Salmon^{1,3,6}, Christophe Phillips^{1,7}, Simon N. Archer⁸, Loic Yengo¹⁰, Enda Byrne¹⁰, Fabienne
11 Collette^{1,3}, Michel Georges⁴, Derk-Jan Dijk^{8,9}, Pierre Maquet^{1,2,6}, Peter M. Visscher¹⁰, Gilles
12 Vandewalle^{1*}

13

14 **Affiliations:**

15 ¹ GIGA-Cyclotron Research Centre-In Vivo Imaging, University of Liège, Liège, Belgium.

16 ² Walloon Excellence in Life sciences and Biotechnology (WELBIO, Belgium).

17 ³ Psychology and Cognitive Neuroscience Research Unit, University of Liège, Liège, Belgium.

18 ⁴ GIGA-Medical Genomics, University of Liège, Liège, Belgium.

19 ⁵ Physip, Paris, France.

20 ⁶ Department of Neurology, University Hospital of Liège, Liège, Belgium.

21 ⁷ GIGA-In Silico Medicine, University of Liège, Liège, Belgium.

22 ⁸ Sleep Research Centre University of Surrey, University of Surrey, Guildford.

23 ⁹ UK Dementia Research Institute.

24 ¹⁰ Institute for Molecular Bioscience, University of Queensland, Brisbane, Australia.

25

26 # These authors contributed equally to this work

27

28 * Correspondence to: Gilles Vandewalle, GIGA-Cyclotron Research Centre-In Vivo Imaging,
29 Bâtiment B30, Allée du 6 Août, 8, 4000 Liège, Belgium, +3243662316,
30 gilles.vandewalle@uliege.be

31

32

33

34 **Abstract**

35 A bidirectional detrimental relationship between sleep alteration and Alzheimer's disease
36 (AD) has been reported in cognitively normal older adults. Here, we tested whether a similar
37 association could be detected in young adults, decades before typical AD symptom onset. We
38 investigated associations between sleep endophenotypes and genome-wide Polygenic Risk
39 Scores (PRS) for AD in 363 young men (22.1 ± 2.7 y) devoid of sleep and cognitive disorders. AD
40 PRS was associated with higher slow wave energy, a marker of sleep need, during habitual
41 sleep and following sleep loss, and, potentially, with the relative increase in slow wave energy
42 following sleep deprivation, reflecting sleep homeostasis. Furthermore high AD PRS was
43 correlated with higher daytime sleepiness. These results imply that sleep features may be
44 associated with AD liability in young adults and suggest that, contrary to older adults, denser
45 and/or more intense sleep slow waves are associated with AD risk in early adulthood.

46

47 **Introduction**

48 Defective proteostasis of brain amyloid-beta (A β) and tau protein antedates the clinical
49 manifestations of Alzheimer's disease by decades (Jack et al., 2018; Musiek and Holtzman,
50 2015; Scheltens et al., 2016). This so-called "preclinical" window constitutes an opportunity
51 for intervention that would hopefully reduce the predicted increase in AD prevalence
52 (Norton et al., 2014), despite the absence of disease modifying treatments in the foreseeable
53 future. In this respect, the further identification of AD risk factors is of paramount importance.

54 Altered sleep has recently been related to increased risk for AD, over and above sleep
55 disturbances in AD patients (Van Egroo et al., 2019). Longer latency to fall asleep and reduced
56 sleep slow waves and rapid eye movement (REM) sleep are associated with both A β plaques
57 and Tau neurofibrillary tangles (NFTs) in cognitively normal participants (Branger et al., 2016;
58 Lucey et al., 2019; Mander et al., 2015). Sleep fragmentation and the reduction in REM sleep
59 quantity in cognitively normal individuals aged >60 y predict the future risk of developing AD
60 (Lim et al., 2013; Pase et al., 2017). Acute sleep deprivation (Holth et al., 2019; Ooms et al.,
61 2014), and experimentally induced reduction of sleep slow waves (Ju et al., 2017), increases
62 cerebrospinal fluid (CSF) A β and Tau protein content.

63 In *post mortem* human brain tissues, the first signs of brain protein aggregation are
64 identified in the locus coeruleus (LC), a brainstem nucleus essential to sleep regulation
65 (Mather and Harley, 2016), under the form of pretangles, consisting of phosphorylated Tau
66 protein (Braak and Del Tredici, 2011). Critically, LC pretangles can be detected during
67 adolescence, while by age 30, they can be detected in the majority of the population (> 90%)
68 (Braak and Del Tredici, 2011). With age, Tau deposits increase in the brain in a stereotypical
69 manner and are tightly associated with cognitive decline in overt 'clinical' AD (Braak and Del
70 Tredici, 2011). Individual variations in these intrinsic properties should be reflected in brain

71 function, including sleep, whether or not Tau aggregation has already occurred. Furthermore,
72 although the consequences of LC pretangles are unknown (Mather and Harley, 2016), they
73 might affect brain functions, including during sleep. Tau plays an important role in synaptic
74 function while Tau pretangles and their surrounding soluble hyperphosphorylated Tau, which
75 remain undetectable *in vivo* in humans, are suspected to have a deleterious impact on
76 neuronal function (DeVos et al., 2013; Hall et al., 2015; Mondragón-Rodríguez et al., 2012;
77 Pooler et al., 2014; Schultz et al., 2018).

78 We therefore reasoned that early associations between sleep and AD might exist in
79 young healthy adults (i.e., before 30 y), especially because AD is heritable (Marioni et al.,
80 2018). Sporadic AD, the most common form of AD in the general population, has an estimated
81 heritability ranging between 58% to 79% (Ertekin-Taner, 2010; Gatz et al., 2006). Individual
82 Polygenic Risk Scores (PRS) for AD can be computed based on results of published Genome
83 Wide Association Studies (GWAS). These PRS reflect part of the genetic liability for AD in any
84 asymptomatic individual and, at the group level, can be associated with phenotypes of interest
85 which are related to the (risk) pathways leading to AD (Euesden et al., 2015; Ge et al., 2019).
86 Recent studies reported significant association between AD PRS and CSF A β content
87 (Martiskainen et al., 2015), cortical thickness (Sabuncu et al., 2012), memory decline (Marden
88 et al., 2016), and hippocampus volume (Mormino et al., 2016) in cognitively normal older
89 adults (> 45 y) but, importantly, also in young adults (18 -35 y) (Mormino et al., 2016).

90 Here, we conducted a proof-of-concept study to establish that sleep can be related to
91 AD risk in young adults, using PRS for AD. We phenotyped sleep under different conditions
92 (baseline, sleep extension, recovery sleep after total sleep deprivation) in a homogenous
93 sample of young healthy cognitively normal men without sleep disorders and computed
94 individual PRS for AD. We hypothesized that high PRS would be associated with sleep metrics

95 that had previously been associated with AD features in cognitively normal older adults. We
96 further explored whether subjective assessments and behavioural correlates of sleep quality
97 would be associated with PRS for AD.

98

99 **Results**

100 Following 3 weeks of imposed regular sleep which was confirmed with actimetry, 363 healthy
101 men aged between 18 and 31 y (**Table 1**) completed a 7-day protocol including
102 polysomnographically recorded sleep during habitual sleep-wake times (range of total sleep
103 duration: 361 to 518 min), during a 12h extended sleep opportunity, and during a 12h recovery
104 sleep opportunity following 40h of total sleep deprivation (**Figure 1**). A blood sample was
105 collected in all participants to assess whole genome common single nucleotide
106 polymorphisms (SNPs). PRS were computed as the weighted sum of the effect sizes of the AD-
107 associated SNPs, obtained from summary statistics of AD cases vs. controls GWAS (Euesden
108 et al., 2015; Ge et al., 2019). PRS can indicate the presence of a genetic signal in moderate
109 sample size studies (Euesden et al., 2015; Sabuncu et al., 2012) as long as it is computed based
110 on a very large GWAS (Dudbridge, 2013; Santoro et al., 2018). We therefore used the summary
111 statistics of one of the largest AD-GWAS available to date (N = 388,324) (Marioni et al., 2018)
112 to compute individual PRS for AD in our sample and related these to sleep EEG characteristics
113 following multiple quality control steps (**Supplementary Figure S1**).

114

115 ***Polygenic risk for AD is associated with the generation of slow waves during sleep***

116 We first focused on baseline sleep, as it is most representative of habitual sleep, to evaluate
117 sleep metrics that might be associated with AD liability. Given our sample size, we reduced
118 the multiple comparison burden by selecting *a priori* variables of interest among

119 electrophysiology sleep metrics that have previously been related to A β and Tau in cognitively
120 normal older adults: sleep onset latency [SOL] (Branger et al., 2016; Ettore et al., 2019),
121 duration of wakefulness after sleep onset [WASO] (Ettore et al., 2019), duration of REM sleep
122 (Pase et al., 2017), slow wave energy [SWE] during NREM sleep (Lucey et al., 2019; Mander et
123 al., 2015), i.e. the cumulated power in the 0.5-4 Hz EEG band, and hourly rate of micro-arousal
124 during sleep (Ju et al., 2017). To compute PRS, one considers SNPs below a p-value threshold
125 in the reference GWAS; the optimal threshold for SNP selection to best compute a PRS for AD
126 is not established. Previous studies employed very exclusive GWAS p-values ($p \sim 10^{-8}$) (Slegers
127 et al., 2015) to more inclusive p-values ($p = .5$) (Escott-Price et al., 2015; Mormino et al., 2016),
128 leading to the inclusion of effect sizes of a few tens to hundreds of thousands SNPs to compute
129 AD PRS. We opted for computing PRS based on increasingly inclusive p-value thresholds
130 (including SNPs reaching GWAS significance – $p < 5 \times 10^{-8}$ - to very liberal $p < 1$), whilst also
131 pruning SNPs based on their correlation structure (i.e. linkage disequilibrium) (**Supplementary**
132 **Table S1**) (Escott-Price et al., 2015; Mormino et al., 2016). In addition, we performed a PRS
133 analysis using all SNPs without any selection.

134 General linear model (GLM) analyses controlling for age, body mass index (BMI) and
135 total sleep time (TST), reveal an significant association between baseline night SWE and AD
136 PRS ($p < 0.02$; $\beta \geq 0.12$) from a p-value threshold of $p=0.05$ up to selecting all SNPs; the
137 association reached stringent experiment-wise correction for multiple comparisons when
138 selecting all SNPs ($p < 0.00125$, see methods; $\beta = 0.17$; **Figure 2A**; **Supplementary Table S2**).
139 We performed a negative control analysis using a PRS for height, a variable for which no
140 association with sleep metrics was expected, and found no association (**Supplementary Figure**
141 **S2A**). The association between AD PRS and SWE was positive (**Figure 2B**) indicating that higher
142 SWE was associated with higher AD-PRS. SWE was also positively associated with TST

143 **(Supplementary Table S2)**, which was expected since TST conditions the opportunity to
144 generate slow waves, and negatively with age, which is in line with the literature (Carrier et
145 al., 2011) but may still be surprising given the young age of our sample. Importantly, since
146 GLM included TST and age, they are not driving the association we find between SWE and PRS
147 for AD.

148 Sleep onset latency (SOL) also reached significant association with AD PRS from a p-
149 value threshold of $p=0.05$ up to $p = 1$ ($p \leq 0.04$; $\beta = -0.11$), but significance did not reach
150 stringent experiment-wise correction for multiple comparisons ($p < 0.00125$) (**Figure 2A**;
151 **Supplementary Table S2**). Hence, this result has to be considered with caution and will not be
152 extensively commented upon. It is interesting to note, however, that the association between
153 PRS for AD and SOL is negative, with higher PRS associating with shorter sleep latency (**Figure**
154 **2C**). Of note, REM% reached uncorrected significance ($p < 0.05$) for thresholding at $p=0.05$ (β
155 $= 0.1$), with a positive association with AD PRS (**Figure 2A**; **Supplementary Table S2**), but, since
156 it is observed for only one p-value threshold, this will not be discussed any further.

157 These results indicate that, particularly when considering all SNPs to construct the AD
158 PRS, the overnight power of the slow waves generated during Non-REM sleep, which is a
159 widely accepted measure of sleep need (Dijk and Czeisler, 1995), is linearly and positively
160 associated with AD genetic liability. This finding suggests that individuals with a higher genetic
161 liability for AD have a higher need for sleep. This idea is further reinforced by the fact that
162 association between SWE and AD PRS is also significant when only considering SWE of the first
163 hour of sleep (Dijk and Czeisler, 1995) (**Supplementary Figure S3 & Table S3**), and the
164 potential negative association with SOL, which depends in part on sleep need.

165 Since slow oscillations (SO), i.e. EEG slow waves < 1 Hz, may be distinct from faster slow
166 waves (Steriade and Amzica, 1998), we further decomposed SWE into SO-SWE (0.5-1Hz) and

167 faster-oscillations—SWE (FO-SWE; 1.25 – 4 Hz). Both SO-SWE and FO-SWE were similarly and
168 significantly associated with AD PRS and for the same p-value thresholds (**Figure 2D**;
169 **Supplementary Table S3**). The association we found between SWE and AD PRS does not
170 appear therefore to arise exclusively from either slower or faster slow waves.

171

172 ***Recovery sleep, slow wave sleep rebound and extension night***

173 When considering sleep EEG of the other nights, we only included SWE, as it is the only sleep
174 metric that was associated with PRS for AD at stringent correction for multiple comparisons
175 threshold. Similarly to baseline night, when considering SWE during the recovery night that
176 followed total sleep deprivation, GLM including age, BMI and TST, reveal that SWE and AD PRS
177 are significantly associated ($p \leq 0.04$; $\beta \geq 0.11$) from p-value thresholding at $p=0.1$ up to using
178 all SNPs (**Figure 3A**; **Supplementary Table S4**), and the association reached stringent
179 experiment-wise correction for multiple comparisons at p-value threshold of $p=1$ ($p <$
180 0.00625). Again, the association was positive with higher SWE associated with higher AD PRS
181 (**Figure 3B**) and results were similar when considering only SWE of the first hour of sleep
182 (**Supplementary Figure S3 & Table S4**). Individuals typically produce more sleep slow waves
183 in response to sleep loss, as part of the homeostatic regulation of sleep (Klerman and Dijk,
184 2005). Therefore, individuals with higher need for sleep after sleep loss have a high PRS for
185 AD.

186 Slow wave sleep rebound quantifies the physiological response to a lack of sleep based
187 on the relative changes from normal sleep to recovery sleep following sleep loss. We
188 computed the ratio between the initial SWE (1h of sleep) during recuperation and baseline
189 nights to assess SWE rebound. GLM analysis, including age and BMI, indicated that SWE
190 rebound reached significant association with AD PRS when including all SNPs ($\beta = -0.11$), but

191 significance did not reach stringent experiment-wise correction for multiple comparisons ($p <$
192 0.00625) (**Figure 3A; Supplementary Table S4**). Sleep rebound is driven by sleep homeostasis
193 which tightly regulates sleep duration and intensity based on prior sleep-wake history (Dijk
194 and Landolt, 2019). Since we observe an association with AD PRS for a single p-value threshold
195 at uncorrected p-value our findings suggest that, in our sample, AD PRS was not tightly
196 associated with sleep homeostatic response. Interestingly though, Spearman's correlation
197 indicated that SWE rebound was correlated to SWE during the recovery night ($r = 0.39$, $p < 10^{-$
198 14 ; **Figure 3C**).

199 We then considered SWE during the extension night and PRS for AD in a GLM, including
200 age, BMI and TST. Results indicated that extension night SWE was not significantly linked to
201 AD PRS. This may be because sleep timing for this particular night affects sleep quality (Dijk
202 and Landolt, 2019; Dijk and Czeisler, 1995) (**Figure 3A**). In contrast to baseline and
203 recuperation sleep periods which were initiated at habitual sleep time, sleep extension started
204 2 hours before habitual sleep time, covering the end of a period known as the evening "wake-
205 maintenance zone" corresponding to the time at which the circadian system maximally
206 promotes wakefulness (Dijk and Czeisler, 1995). In addition, the circadian system is known to
207 affect the relative content in Non-REM and REM sleep as well as in different EEG frequencies
208 (Dijk and Landolt, 2019; Dijk and Czeisler, 1995). Therefore, the imposed 2h advance of sleep
209 time during the extension night affected sleep quality, which may have reduced the
210 association between SWE and AD PRS found with baseline and recovery nights.

211

212 ***Polygenic risk for AD is associated with increased subjective daytime sleepiness***

213 We next focused on the non-EEG sleep metrics of our protocol and explored their potential
214 association with AD PRS. Based on the 3 weeks of actigraphy with imposed regular habitual

215 sleep time at home, we computed the probability of transition from rest to activity during the
216 sleep period [kRA; (Lim et al., 2013)]. kRA is a proxy for sleep fragmentation and has been
217 associated with cognitive decline and the risk for developing AD in cognitively normal older
218 adults [mean age 81.6 y (Lim et al., 2013)]. kRA showed a negative association (higher AD PRS
219 is associated with less fragmented sleep) with PRS for AD for two p-value thresholds, $p=5 \times 10^{-8}$
220 ⁸ and $p = 10^{-8}$ (**Figure 4A; Supplementary Table S5**), but did not reach stringent experiment-
221 wise correction for multiple comparisons ($p < 0.002$); it will not be further discussed.

222 Two questionnaires assessed habitual subjective sleep quality and daytime sleepiness
223 before the start of the protocol. Subjective sleep quality was not significantly associated with
224 AD PRS. By contrast, subjective daytime sleepiness was significantly associated with PRS for
225 AD ($p < 0.05$; $\beta \geq 0.11$) from thresholding at $p < 10^{-4}$ up to a threshold of $p < 1$ and at stringent
226 experiment-wise correction for multiple comparisons at p-value thresholds of $p < 0.05$ and p
227 < 0.3 ($p < 0.002$, see methods; $\beta \geq 0.16$; **Figure 4A; Supplementary Table S5**). The association
228 was positive indicating that higher habitual subjective daytime sleepiness was associated with
229 higher AD PRS (**Figure 4B**). This shows that the association between AD PRS and sleep need,
230 as assessed by electrophysiology, is not a mere effect of the protocol and is mirrored at the
231 behavioural level during habitual daytime functioning (outside the experimental protocol).
232 Importantly the vast majority of participants had no or mild levels of sleepiness with a minority
233 ($N = 28$) reporting moderate level of daytime sleepiness; the association with daytime
234 sleepiness is therefore not driven by extreme or clinically relevant sleepiness levels but rather
235 by ordinary variability in healthy young individuals.

236
237

238 **Discussion**

239 We provide evidence that genetic liability for AD is related to sleep characteristics and daytime
240 sleepiness in young adults (aged 18 to 31 y), i.e. decades before typical onset age of clinical
241 AD symptoms and at an age at which current AD biomarkers are typically negative. Our sample
242 size is modest for the detection of small effect size associations, so the present results should
243 be considered as a proof-of-concept for linking AD liability and sleep in young adults. We
244 emphasize, however, that the unique deep phenotyping of our protocol in hundreds of
245 participants, based on gold standard electrophysiology and comprising different sleep
246 conditions, undoubtedly increased the sensitivity of our analyses so that we could find
247 associations that survived stringent correction for multiple comparisons. Importantly, our
248 protocol provides links between disease risk and sleep physiology in contrast to coarser
249 phenotyping based on sleep questionnaires or actimetry alone. The characteristics of our
250 sample renders our findings remarkable: to increase the genetic uniformity of the sample we
251 only included Caucasian men within a narrow age range; they were healthy and devoid of any
252 sleep disorders or sleep complaints and their prior sleep-wake history was recorded and
253 stable. In this carefully selected homogenous sample, higher PRS for AD was associated with
254 producing denser or larger slow waves during baseline and recovery night time sleep,
255 potentially with large slow wave sleep rebound following sleep deprivation, and with
256 reporting higher daytime sleepiness.

257 Larger and more abundant slow waves during habitual sleep in young and healthy
258 individuals can result from an increased sleep need due to insufficient prior sleep (Klerman
259 and Dijk, 2005). This appears unlikely: prior sleep-wake history was stringently controlled for
260 3 weeks prior to entering the lab, ruling out undue sleep deprivation, sleep restriction or
261 disrupted rhythmicity. Moreover, throughout the protocol, participants followed their own

262 sleep schedule, a regime that should not expose them to important chronic sleep restriction.
263 Finally, SWE during the sleep extension night did not significantly correlate with subjective
264 daytime sleepiness (Spearman's correlation $r = 0.08$, $p = 0.11$), supporting the idea that, when
265 given a longer sleep opportunity, individuals with higher and yet normal daytime sleepiness
266 did not sleep more intensely to recover a putative prior sleep debt. Alternatively, increased
267 slow wave density and/or intensity could reflect a faster build-up of sleep need (Viola et al.,
268 2007). Indeed, sleep homeostasis is thought to result from molecular and cellular changes
269 induced by waking brain function and behaviour (Scammell et al., 2017; Tononi and Cirelli,
270 2014). Synaptic potentiation and increased synaptic strength resulting from waking
271 experience are reflected in a progressive increased cortical excitability during wakefulness
272 (Huber et al., 2013; Ly et al., 2016) and an increase in slow wave activity during subsequent
273 sleep (Scammell et al., 2017; Tononi and Cirelli, 2014). Likewise, extracellular glutamate
274 concentration and glutamatergic receptor density increase with time awake and affect brain
275 function (Dash et al., 2009; Hefti et al., 2013). Here, SWE rebound following sleep loss, i.e. the
276 ratio between baseline and recovery sleep, was only significantly associated with high PRS for
277 AD for one p-value threshold and at uncorrected significance threshold, but was strongly
278 associated with SWE during recovery sleep. We therefore find only partial evidence for this
279 second hypothesis, which will require more investigations.

280 How are these findings related to AD? The answer to this question remains speculative
281 because the time course of AD processes across lifespan is still poorly understood. In
282 transgenic mice, neuronal activity locally increases the level of A β in the interstitial fluid and
283 drives local A β aggregation (Bero et al., 2011). The progressive A β deposition ultimately
284 disrupts local functional connectivity and increases regional vulnerability to subsequent A β
285 deposition (Bero et al., 2012). We might thus hypothesize that individuals with more intense

286 brain activity during wakefulness (and therefore also during sleep) would also be exposed to
287 larger A β extracellular levels and a greater risk of developing A β deposits. This hypothesis
288 appears unlikely for the following reasons. First, post mortem examinations show that the
289 earliest evidence of A β deposits (stage 1 (Thal et al., 2002)) is not observed before 30 y (Braak
290 and Del Tredici, 2015). Second, A β oligomers might be released and exert their detrimental
291 effect on brain function at an earlier age. However, in transgenic mice, sleep-wakefulness
292 cycle and diurnal fluctuation in brain extracellular A β remain normal until plaque formation
293 (Roh et al., 2012).

294 By contrast, given the age range of our population sample, the reported topography of
295 pretangles at this age (Braak and Del Tredici, 2011) and the power of PRS for AD to
296 discriminate AD patients in case-control samples (Escott-Price et al., 2015), higher PRS in our
297 young sample might reflect the influence of incipient Tau aggregation onto sleep regulation
298 through the LC (and other non-thalamic cortically-projecting nuclei, as raphe nuclei) (Braak
299 and Del Tredici, 2011). Tau, an intracellular protein, is also detected in the extracellular space.
300 Over and above a low level constitutive tau secretion (Chai et al., 2012), neuronal activity
301 increases the release of tau in the extracellular space (Yamada et al., 2014), thereby
302 participating in enhancing tau spread and tau pathology in vivo (Schultz et al., 2018).
303 Moreover, early electrophysiological changes indicative of hyperexcitability are observed in
304 intact neurons from transgenic tau mice (Crimins et al., 2012). In the cerebral cortex of tau
305 transgenic mice, glutamatergic and GABAergic neurons are in a hypermetabolic state,
306 characterized by a relative increase in production of glutamate (Nilsen et al., 2013). By
307 contrast, decreasing tau in epilepsy-prone transgenic mice reduces neuronal hyperexcitability
308 (Holth et al., 2013). These findings would suggest that a strong cerebral activity during
309 wakefulness would result in a higher daily average in perceived sleepiness, a substantial tau

310 release and an enhanced sleep homeostasis processes, as indicated by denser and larger slow
311 waves.

312 The reasons for the vulnerability of LC to Tau aggregation are not established but might
313 reside in its constant recruitment for essential functions, its energy demanding and ubiquitous
314 brain connections, its high vascularization or its higher susceptibility to oxidative stress
315 (Mather and Harley, 2016). Although it tantalizing to hypothesize that tau is involved in the
316 mechanisms linking slow wave sleep and AD liability, one can also speculate that it is the LC
317 intrinsic characteristics that are related to tau vulnerability (subsequent) that associated with
318 PRS for AD, meaning that the association would not necessarily require the presence of tau to
319 be detected.

320 On the other hand, in tau transgenic mice, misfolded and hyperphosphorylated tau
321 alters hippocampal synaptic plasticity (Polydoro et al., 2014), eventually induces a loss of
322 hippocampal LTP and causes reduction of synaptic proteins and dendritic spines (Van der
323 Jeugd et al., 2012) (Sydow et al., 2011). These findings would predict a lower sleep need in
324 participants with high AD liability. However, it is possible that these detrimental processes
325 take place later on in the development of the disease or emerge from an interaction between
326 tau and Ab (Oddo et al., 2003) (Fein et al., 2008). Accordingly, in older adults, significant
327 associations, opposite to the current findings, were observed between slow wave sleep and
328 risk for AD based on PET biomarkers (Lucey et al., 2019; Mander et al., 2015): higher A β
329 (Mander et al., 2015) or tau (Lucey et al., 2019) burdens were associated with lower sleep
330 slow wave EEG power. Our results suggest therefore that the association between AD risk and
331 sleep homeostasis changes with age: at an early stage, dense and large slow waves would be
332 associated with increased AD risk. Later on, the ability to generate slow waves would play a

333 protective role against AD risk. Deep sleep phenotyping across all ages and/or in long term
334 longitudinal studies will have to test this hypothesis.

335 We emphasize that the cross sectional nature of our study, precludes any causal
336 interpretation of the association we find between AD and sleep. We further stress that our
337 sample only include men and cannot therefore be extended to the entire population. Women
338 have been reported to have different sleep characteristics, including the production of more
339 numerous and intense slow waves during sleep (Svetnik et al., 2017). It is also worth
340 mentioning that we cannot isolate in our findings the specific contributions of the circadian
341 timing system, which is the second fundamental mechanism regulating sleep and wakefulness
342 (Dijk and Landolt, 2019). Although we find significant association between AD PRS and
343 baseline/recovery SWE and daytime sleepiness across similar p-value thresholds, more
344 research is also required to determine how many SNPs one has to include, i.e. what SNP
345 selection strategy should be used to best predict AD. Previous studies support that using a
346 lenient p-value thresholds is successful in doing so (Escott-Price et al., 2015; Mormino et al.,
347 2016), thus we are confident that our findings are related to AD liability. Our PRS calculation
348 was stringently controlled for the weight of chromosome 19 (see methods) to avoid excessive
349 contribution from Apolipoprotein E (APOE) genotype, which is the genetic trait most
350 associated with sporadic AD. When comparing APOE $\epsilon 4$ carriers genotype vs. non-carriers, no
351 significant difference in baseline night SWE and daytime sleepiness was observed
352 **(Supplementary Figure S4)**, in line with our findings that a large number of SNPs is required
353 to find an association between SWE and PRS for AD.

354 The specificity of our findings for a given EEG frequency band and/or for NREM remains
355 to be fully established. As many previous studies on linking sleep and AD risk [e.g. (Lucey et
356 al., 2019; Mander et al., 2015)], we only focussed on a limited set of sleep metrics, and

357 included a single power measure over a given frequency band. Although not the focus of the
358 present paper, we computed SWE, relative SWE (i.e. ratio between SWE and overnight total
359 NREM power), overnight cumulated total power during NREM sleep and overnight cumulated
360 power in the 2 to 6 Hz band during REM sleep of the baseline night in individuals among the
361 higher and lower AD PRS quartile (**Supplementary Figure S5**). This simple analyses indicates
362 that individuals with 25% highest AD PRS had higher power than individuals with 25% lowest
363 AD PRS for all three absolute measures (t-test; $p \leq 0.01$ but not for relative SWE ($p = 0.14$),
364 suggesting that our findings may not be specific to NREM sleep and SWE. We emphasize,
365 however, that, given our modest sample size, our analyses was not planned to address such
366 question. This first preliminary analysis warrants future studies with larger sample size
367 ensuring sufficient power when using a larger set of sleep metrics. Since we also find that
368 daytime sleepiness, a wakefulness trait, is associated with PRS for AD, and because of the link
369 between tau protein and cortical excitability (Holth et al., 2013), neuronal activity synchrony
370 during wakefulness should be associated with the risk for developing AD to assess whether
371 isolated links are specific to sleep.

372 In conclusion, we find that denser and/or more intense sleep slow waves during
373 baseline and recovery sleep and daytime sleepiness are associated with the genetic liability
374 for AD in young and healthy young men. This finding supports that sleep slow wave and
375 sleepiness measures may help early detection of an increased risk for AD and reinforce the
376 idea that sleep may be an efficient intervention target for AD. Similarly to most studies
377 associating PRS to phenotypes of interest [e.g. (Marden et al., 2016; Mormino et al., 2016;
378 Sabuncu et al., 2012; Santoro et al., 2018)], the effects we isolated constitute relatively small
379 effects ($r < 0.2$), however, recalling that sleep must be envisaged within the multifactorial
380 aspect of a complex disease such as AD (Norton et al., 2014).

381 **Materials and Methods**

382 **Participants**

383 Three hundred and sixty-four young healthy men (aged 18-31 years) were enrolled for the
384 study after giving their written informed consent, and received a financial compensation. This
385 research was approved by the Ethics Committee of the Faculty of Medicine at the University
386 of Liège, Belgium.

387 Exclusion criteria were as follows: Body Mass Index (BMI) > 27; psychiatric history or
388 severe brain trauma; addiction, chronic medication affecting the central nervous system;
389 smoking, excessive alcohol (> 14 units/week) or caffeine (> 3 cups/day) consumption; shift
390 work in the past year; transmeridian travel in the past three months; moderate to severe
391 subjective depression as measured by the Beck Depression Inventory (BDI)(Beck et al., 1988)
392 (score > 19); poor sleep quality as assessed by the Pittsburgh Sleep Quality Index (PSQI)
393 (Buysse et al., 1989) (score > 7). Participants with sleep apnea (apnea hypopnea index >
394 15/hour; 2017 American Academy of Sleep Medicine criteria, version 2.4) were excluded
395 based on an in-lab screening night of polysomnography. One participant, part of a twin pair,
396 was excluded from the analyses so that the analysed sample included 363 participants (**Table**
397 **1**). EEG recordings were missing due to technical issues for three of the five participants per
398 nights of sleep considered in this manuscript. No individual had more than one night of sleep
399 missing so that all 363 individuals contributed to at least part of the analyses reported here.
400 The Epworth Sleepiness Scale (Johns, 1991) was used to characterize daytime sleepiness but
401 was not used for inclusion. While most participants scored normal values (≤ 11), 28
402 participants had scores ranging from 12 to 15, corresponding to moderate daytime sleepiness.
403 Because of an initial error in automatic evaluation of computerized questionnaires, seven
404 participants had PSQI scores higher than cut-off (scores of 8 or 9). No participants were,

405 however, taking sleep medication. To avoid reducing sensitivity, these participants were
406 included in all analyses but removing them did not change statistical outcomes.

407 Although available in our laboratory, Ab- and tau- PET scans were not conducted in
408 participants: it was felt unethical to expose them to an irradiation while results would
409 necessarily be normal.

410 **Experimental Protocol**

411 Individual sleep-wake history was strictly controlled: during the three weeks preceding the in-
412 lab experiment, participants were instructed to follow a regular sleep schedule according to
413 their habitual sleep timing (+/-30 min for the first 2 weeks; +/- 15 min for the last week).
414 Actigraphy data showed that included participants faithfully followed the assigned schedules.

415 **Figure 1** provides an overview of the protocol. On Day 1, a urine drug test was
416 performed (10-multipanel drug) before completing an adaptation night at habitual
417 sleep/wake schedule during which a full polysomnography was recorded in order to screen
418 for sleep related breathing disorders or periodic limb movements. On Day 2, participants left
419 the lab with the instruction not to nap (checked with actigraphy). They returned to the
420 laboratory at the end of Day 2, completed a baseline night of sleep under EEG monitoring at
421 habitual sleep/wake schedule and remained in the laboratory until Day 7 under constant
422 CCTV. A 12h sleep extension night under EEG and centered around habitual sleep mid-point
423 was initiated on Day 3, in complete darkness with the instruction to try to sleep as much as
424 possible. Day 4 included a 4h afternoon nap under EEG recording (centred 1h after the mid-
425 point between morning wake-up time and evening sleep time) further dissipated any residual
426 sleep need. What we termed the “before” night was also initiated on Day 4. It consisted in 8h
427 sleep opportunity starting at habitual sleep time. During Day 5 and 6, participants remained
428 awake for 40 hours under constant routine (CR) conditions [dim light < 5 lux, semi-recumbent

429 position, $19^{\circ}\text{C} \pm 1$, regular isocaloric food intake] before initiating a 12h recuperation night
430 from habitual sleep time until 4h after habitual wake time. Except during sleep (darkness – 0
431 lux) and constant routine protocol (dim light < 5 lux), participants were maintained in normal
432 room light levels oscillating between 50 and 1000 lux depending on location and gaze.
433 Analyses of “before” night, nap and sleep deprivation protocol will be reported elsewhere.
434 The current study focusses on baseline, extension and recovery nights of sleep.

435 **EEG acquisitions and analyses**

436 Sleep data were acquired using Vamp amplifiers (Brain Products, Germany). The electrode
437 montage consisted of 10 EEG channels (F3, Fz, F4, C3, Cz, C4, Pz, O1, O2, A1; reference to right
438 mastoid), 2 bipolar EOGs, 2 bipolar EMGs and 2 bipolar ECGs. Screening night of sleep also
439 included respiration belts, oximeter and nasal flow, 2 electrodes on one leg, but included only
440 Fz, C3, Cz, Pz, Oz and A1 channels. EEG data were re-referenced off-line to average mastoids.
441 Scoring of sleep stages was performed automatically in 30-s epochs using a validated
442 algorithm (ASEEGA, PHYSIP, Paris, France) (Berthomier et al., 2020) and according to 2017
443 American Academy of Sleep Medicine criteria, version 2.4. An automatic artefact detection
444 algorithm with adapting thresholds (Wallant et al., 2016) was further applied on scored data.
445 Power spectrum was computed for each channel using a Fourier transform on successive 4-s
446 bins, overlapping by 2-s., resulting in a 0.25 Hz frequency resolution. The night was divided
447 into 30 min periods, from sleep onset until lights on. For each 30 min period, slow wave energy
448 (SWE) was computed as the sum of generated power in the delta band (0.5 – 4 Hz range)
449 during all the NREM 2 (N2) and NREM 3 (N3) epochs of the given period, after adjusting for
450 the number of N2 and N3 epochs to account for artefacted data (Skorucak et al., 2018). As the
451 frontal regions are most sensitive to sleep-wake history (Schmidt et al., 2012), SWE was
452 considered over the frontal electrodes (mean over F3, Fz, F4). To deal with the multiple

453 comparison issue, we did not consider SWE over the other parts of the scalp (Dijk and Landolt,
454 2019). Additional analyses also considered cumulative power between 0.5 and 25 Hz during
455 NREM and cumulative power between 2 to 6 Hz power during REM sleep as well through
456 similar computation procedures.

457 **Genotyping and Imputation**

458 Blood sample were collected on Day 2 for DNA analyses. The genotyping was performed using
459 the Infinium OmniExpress-24 BeadChip (Illumina, San Diego, CA) based on Human Build 37
460 (GRCh37). Missingness of the SNP markers were below 20% in all individuals. Using PLINK
461 software (Purcell et al., 2007), we excluded the SNPs with a minor allele frequency (MAF)
462 below 0.01, or Hardy-Weinberg disequilibrium (HWD) significance below 10^{-4} . Markers with
463 ambiguous alleles (A-T, T-A, G-C, C-G) were excluded as well. We finally ended with 511,729
464 SNPs. To investigate the relatedness between the individuals, using PLINK --genome
465 command, we computed the identity by descent (IBD) estimates for all pairs of individuals.
466 For 8 pairs, the composite pi-hat score was between 0.15 and 0.56 suggesting the existence
467 of at least 3rd degree relatives in our cohort. However, we did not exclude any individuals at
468 this level of analysis. We merged our cohort with “1000 Genomes Project” (Altshuler et al.,
469 2010) and employed principal component analyses (PCA) on the merged samples to see if our
470 cohort was located in the European cluster (**Figure S1A**). We further assess allele frequencies
471 coherence of our cohort with the European subset of “1000 Genomes Project” (**Figure S1B**).
472 Markers with allele frequencies deviating more than 0.2 unit from European allele frequency
473 were excluded (**Figure S1C**). Genotype imputation was performed using “Sanger imputation
474 server” by choosing “Haplotype Reference Consortium (release 1.1)” (HRC) as Reference Panel
475 and the Pre-phasing algorithm EAGLE2. Post-imputation QC was then performed very similarly
476 to the one of above (MAF < 0.01, HWD < 10^{-4} , imputation quality score < 0.3). As a result of

477 such filters, 7,554,592 variants remained for the analysis. However, to avoid having markers
478 with allele frequencies deviating from European allele frequency, we computed the allele
479 frequencies for the samples in our cohort after imputation and cross checked them with the
480 European allele frequency (obtained from HRC Reference Consortium (release 1.1)) (**Figure**
481 **S1D**). The markers whose allele frequencies were deviating more than 0.2 unit from European
482 allele frequency were excluded.

483 **Predicting Height**

484 To validate common SNP assessments in our sample we predicted actual height based on
485 Polygenic Scores computed based on a meta-analysis of a recent GWAS study (Yengo et al.,
486 2018) on around 700,000 individuals. We used all the variants in the meta-analysis that were
487 included in our cohort [3121 SNPs out of 3290]. The procedure for calculating the Liability for
488 height is the same as the one described in the following section. **Figures S1E** visualize the
489 Pearson correlation results between the actual values for Height and estimated genetic
490 Liability of Height ($r = 0.46$, $p = 10^{-20}$). Explained variance is very close to that reported
491 previously (Yengo et al., 2018), i.e. is 24.6% .

492 **Polygenic Risk Score (PRS)**

493 Polygenic risk score (PRS) is defined as the sum of multiple single-nucleotide polymorphism
494 alleles associated with the trait for an individual, weighted by the estimated effect sizes
495 (Euesden et al., 2015; Ge et al., 2019). We used the estimated effect sizes from a GWAS by
496 Marioni et al. including 388,324 individuals, with 67,614 cases - patients and self-report
497 familial history of AD – and 320,710 controls (Marioni et al., 2018). To generate a set of
498 approximately independent SNPs in our sample, linkage disequilibrium (LD) clumping was
499 performed using PLINK (Purcell et al., 2007) on window size of 1000-kb using a pairwise r^2 cut-

500 off of 0.2 and a predetermined significance thresholds (p -value $< 5 \cdot 10^{-8}$, 10^{-6} , 10^{-4} , 0.001, 0.01,
501 0.05, 0.1, 0.3, 0.5, and 1). Due to the effect of APOE in chromosome 19, we used a more
502 stringent criteria pairwise r^2 cut-off of 0.01 for this chromosome. In addition, we also
503 calculated the PRS using all the variants with no pruning, i.e. no correction for linkage
504 disequilibrium, thereby selecting all SNPs for PRS construction. This procedure yielded a
505 quantitative polygenic score, under each significance threshold, for each individual in our
506 cohort.

507 **Height as a negative control**

508 From the known and hypothesised biology, we did not expect any a priori association between
509 the sleep phenotypes and a genetic liability for height. Therefore, we included an analysis of
510 polygenic scores for height as a negative control, performing exactly the same association
511 analyses as we did for liability to AD.

512 **Actigraphy data collection and analysis**

513 Actigraphy data were collected with Actiwatch 4 devices (Cambridge Neurotechnology Ltd, UK)
514 worn on the non-dominant arm. Data consisted in the sum of activity counts over 60-second
515 intervals. Data were analyzed with *pyActigraphy* (Version v0.1) (Hammad and Reyt, 2019) which
516 implements the computation of state transition probabilities from rest to activity (kRA) (Lim
517 et al., 2013). In order to better reflect sleep fragmentation, this probability was calculated only
518 over sleep periods for each study's participant. The sleep period is defined as the period
519 comprised between the activity offset and onset times, derived from the average 24h activity
520 profile. In addition, to mitigate the uncertainty on their exact timing, the offset and onset
521 times were shifted by +15 min and -15min, respectively.

522 **Statistical Analysis**

523 We employed general linear model (GLM) to test the associations between sleep metrics of
524 interests as a dependent variable and the estimated PRS as an independent variables and age,
525 BMI and TST as covariates. Prior to the analysis, we removed the outliers among the sleep
526 metrics by excluding the samples lying beyond 4 times the standard deviation (the final
527 number of individuals included in each analyses is reported below each dependent variable in
528 the supplementary tables). All analyses were performed in Python.

529 In this study, we analysed multiple traits and multiple polygenic risk scores (PRS) for
530 association. To control the experiment-wise false positive rate, we estimated the number of
531 independent tests that we performed, and set an experiment-wise p-value threshold
532 accordingly. Since the traits are phenotypically correlated with each other and the PRSs are
533 also correlated, we used the correlation structure to estimate the equivalent number of tests,
534 which is the number of independent tests that would result in the same overall observed
535 variation.

536 For each correlation matrix of traits and PRS, we performed a singular value
537 decomposition (SVD), ordered the resulting eigenvalues and calculated the sum of all
538 eigenvalues. We then calculated the minimum number of linear combination of the traits that
539 resulted in 99% of the variation. For the 5 EEG phenotypic sleep traits this estimate was 5,
540 showing that they are not highly correlated. Likewise, for the 3 non-EEG phenotypic sleep
541 traits this estimate was 3. For the 11 PRS for AD and height, the resulting number was 8 and
542 4, respectively, consistent with a higher correlation structure among the multiple height
543 predictors. Therefore, our analyses with the 5 EEG sleep metrics implies a total number of 40
544 and 20 tests when confronted to AD-PRS and height-PRS respectively. Hence, for any of our
545 trait-PRS combination to be statistically significant when taken multiple testing into account,
546 the p-value threshold are 0.00125 and 0.0025 for AD and height, respectively. Similarly, our

547 analyses with SWE in recovery and extension nights and with SWE rebound, each imply 8 tests
548 and a p-value threshold of $p = 0.00625$, while our analyses with 3 non-EEG sleep metrics 24
549 tests and a p-value threshold of $p = 0.0021$. Additional analyses compared lower and higher
550 PRS quartile (i.e. 90 individuals with lowest AD PRS and 90 individuals with highest PRS; cf. Fig.
551 S4) as well as APOE $\epsilon 4$ carriers vs. non carriers (cf. Fig. S5). For these analyses, groups were
552 compared through t-tests.

553

554 **Acknowledgments**

555 We thank E. Balteau, C. Borsu, N. Cai, A. Claes, G. Gaggioni, A. Gobalek, B. Herbillon, P.
556 Hawotte, E. Lambot, B. Lauricella, M. Lennertz, J.Q.L. Ly, M. Micho, G. Salmon and A. Shaffii-
557 Le Bourdieu for their help in different steps of the study.

558 **Funding**

559 P.G., M.V., C.S., F.C., C.P. and G.V. are supported by the Fonds de la Recherche Scientifique -
560 FNRS-Belgium. The study was supported by the Wallonia-Brussels Federation (Actions de
561 Recherche Concertées - ARC - 09/14-03), WELBIO/Walloon Excellence in Life Sciences and
562 Biotechnology Grant (WELBIO-CR-2010-06E), FNRS-Belgium (FRS-FNRS, F.4513.17 &
563 T.0242.19 & 3.4516.11), University of Liège (ULiège), Fondation Simone et Pierre Clerdent,
564 European Regional Development Fund (Radiomed project), Fonds Léon Fredericq. DJD is
565 supported by the UK Dementia Research Institute (DRI).

566 **Competing interests**

567 All authors declare no competing interests.

568 **Author contributions**

569 Study concept and design: V.M., S.N.A., M.G., D.J.D., P.M., P.M.V. and G.V. Data acquisition:
570 V.M., M.J., C.Me. Data analyses: V.M., E.K., P.G., C.B., M.B., W.C., N.A. and G.V. Interpretation:
571 V.M., E.K., P.G., D.J.D., P.M., P.M.V., G.V. Analyses support: E.S., A.L., C.P., L.Y., E.B., M.E., M.V.,
572 D.C., C.Mo., G.H., C.D., F.C., M.G., C.S. Manuscript draft: V.M., E.K., P.G., D.J.D., P.M., P.M.V.,
573 G.V. Revised manuscript: all authors.

574
575

576 **References**

577 Altshuler DL, Durbin RM, Abecasis GR, Bentley DR, Chakravarti A, Clark AG, Collins FS, De La Vega FM,
578 Donnelly P, Egholm M, Flicek P, Gabriel SB, Gibbs RA, Knoppers BM, Lander ES, Lehrach H, Mardis
579 ER, McVean GA, Nickerson DA, Peltonen L, Schafer AJ, Sherry ST, Wang Jun, Wilson RK, Deiros D,
580 Metzker M, Muzny D, Reid J, Wheeler D, Wang SJ, Li J, Jian M, Li G, Li R, Liang H, Tian G, Wang B,
581 Wang Jian, Wang W, Yang H, Zhang X, Zheng Huisong, Ambrogio L, Bloom T, Cibulskis K, Fennell
582 TJ, Jaffe DB, Shefler E, Sougnez CL, Bentley IDR, Gormley N, Humphray S, Kingsbury Z, Koko-
583 Gonzales P, Stone J, Mc Kernan KJ, Costa GL, Ichikawa JK, Lee CC, Sudbrak R, Borodina TA, Dahl
584 A, Davydov AN, Marquardt P, Mertens F, Nietfeld W, Rosenstiel P, Schreiber S, Soldatov A V.,
585 Timmermann B, Tolzmann M, Affourtit J, Ashworth D, Attiya S, Bachorski M, Buglione E, Burke A,
586 Caprio A, Celone C, Clark S, Connors D, Desany B, Gu L, Guccione L, Kao K, Kebbel A, Knowlton J,
587 Labrecque M, McDade L, Mealmaker C, Minderman M, Nawrocki A, Niazi F, Pareja K, Ramenani
588 R, Riches D, Song W, Turcotte C, Wang S, Dooling D, Fulton L, Fulton R, Weinstock G, Burton J,
589 Carter DM, Churcher C, Coffey Alison, Cox A, Palotie A, Quail M, Skelly T, Stalker J, Swerdlow HP,
590 Turner D, De Witte A, Giles S, Bainbridge M, Challis D, Sabo A, Yu F, Yu J, Fang X, Guo X, Li Yingrui,
591 Luo R, Tai S, Wu H, Zheng Hancheng, Zheng X, Zhou Y, Marth GT, Garrison EP, Huang W, Indap A,
592 Kural D, Lee WP, Leong WF, Quinlan AR, Stewart C, Stromberg MP, Ward AN, Wu J, Lee C, Mills
593 RE, Shi X, Daly MJ, DePristo MA, Ball AD, Banks E, Browning BL, Garimella K V., Grossman SR,
594 Handsaker RE, Hanna M, Hartl C, Kernytsky AM, Korn JM, Li H, Maguire JR, McKenna A, Nemesh
595 JC, Philippakis AA, Poplin RE, Price A, Rivas MA, Sabeti PC, Schaffner SF, Shlyakhter IA, Cooper DN,
596 Ball E V., Mort M, Phillips AD, Stenson PD, Sebat J, Makarov V, Ye Kenny, Yoon SC, Bustamante
597 CD, Boyko A, Degenhardt J, Gravel S, Gutenkunst RN, Kaganovich M, Keinan A, Lacroute P, Ma X,
598 Reynolds A, Clarke L, Cunningham F, Herrero J, Keenen S, Kulesha E, Leinonen R, McLaren WM,
599 Radhakrishnan R, Smith RE, Zalunin V, Korbelt JO, Stütz AM, Humphray IS, Bauer M, Cheetham RK,
600 Cox T, Eberle M, James T, Kahn S, Murray L, Ye Kai, Fu Y, Hyland FCL, Manning JM, Stephen FM,
601 Peckham HE, Sakarya O, Sun YA, Tsung EF, Mark AB, Konkel MK, Walker JA, Albrecht MW,

602 Amstislavskiy VS, Herwig R, Parkhomchuk D V., Agarwala R, Khouri HM, Morgulis AO, Paschall JE,
603 Phan LD, Rotmistrovsky KE, Sanders RD, Shumway MF, Xiao C, Gil AM, Auton A, Iqbal Z, Lunter G,
604 Marchini JL, Moutsianas L, Myers S, Tumian A, Knight J, Winer R, Craig DW, Beckstrom-Sternberg
605 SM, Christoforides A, Kurdoglu AA, Pearson J V., Sinari SA, Tembe WD, Haussler D, Hinrichs AS,
606 Katzman SJ, Kern A, Kuhn RM, Przeworski M, Hernandez RD, Howie B, Kelley JL, Melton SC, Li Yun,
607 Anderson P, Blackwell T, Chen W, Cookson WO, Ding J, Kang HM, Lathrop M, Liang L, Moffatt MF,
608 Scheet P, Sidore C, Snyder Matthew, Zhan X, Zöllner S, Awadalla P, Casals F, Idaghdour Y, Keebler
609 J, Stone EA, Zilversmit M, Jorde L, Xing J, Eichler EE, Aksay G, Alkan C, Hajirasouliha I, Hormozdiari
610 F, Kidd JM, CenkSahinalp S, Sudmant PH, Chen K, Chinwalla A, Ding L, Koboldt DC, McLellan MD,
611 Wallis JW, Wendl MC, Zhang Q, Albers CA, Ayub Q, Balasubramaniam S, Barrett JC, Chen Y, Conrad
612 DF, Danecek P, Dermitzakis ET, Hu M, Huang N, Matt EH, Jin H, Jostins L, Keane TM, Quang Le S,
613 Lindsay S, Long Q, MacArthur DG, Montgomery SB, Parts L, Chris Tyler-Smith, Walter K, Zhang Y,
614 Gerstein MB, Snyder Michael, Abyzov A, Balasubramanian S, Bjornson R, Grubert F, Habegger L,
615 Haraksingh R, Khurana E, Lam HYK, Leng J, Mu XJ, Urban AE, Zhang Z, McCarroll SA, Zheng-Bradley
616 X, Batzer MA, Hurler ME, Du J, Jee J, Coafra C, Dinh H, Kovar C, Lee S, Nazareth L, Wilkinson J,
617 Coffey Allison, Scott C, Tyler-Smith C, Gharani N, Kaye JS, Kent A, Li T, McGuire AL, Ossorio PN,
618 Rotimi CN, Su Y, Toji LH, Felsenfeld AL, McEwen JE, Abdallah A, Juenger CR, Clemm NC, Duncanson
619 A, Green ED, Guyer MS, Peterson JL. 2010. A map of human genome variation from population-
620 scale sequencing. *Nature* **467**:1061–1073. doi:10.1038/nature09534

621 Beck AT, Steer RA, G. GM. 1988. Psychometric Properties of the Beck Depression Inventory: Twenty-
622 five years of evaluation. *Clin Psychol Rev* **8**:77–100. doi:https://doi.org/10.1016/0272-
623 7358(88)90050-5

624 Bero AW, Bauer AQ, Stewart FR, White BR, Cirrito JR, Raichle ME, Culver JP, Holtzman DM. 2012.
625 Bidirectional relationship between functional connectivity and amyloid- β deposition in mouse
626 brain. *J Neurosci* **32**:4334–4340. doi:10.1523/JNEUROSCI.5845-11.2012

627 Bero AW, Yan P, Roh JH, Cirrito JR, Stewart FR, Raichle ME, Lee JM, Holtzman DM. 2011. Neuronal
628 activity regulates the regional vulnerability to amyloid- β deposition. *Nat Neurosci* **14**:750–756.
629 doi:10.1038/nn.2801

630 Berthomier C, Muto V, Schmidt C, Vandewalle G, Jaspar M, Devillers J, Gaggioni G, Chellappa SL, Meyer
631 C, Phillips C, Salmon E, Berthomier P, Prado J, Benoit O, Bouet R, Brandewinder M, Mattout J,
632 Maquet P. 2020. Exploring scoring methods for research studies : Accuracy and variability of
633 visual and automated sleep scoring 1–11. doi:10.1111/jsr.12994

634 Braak H, Del Tredici K. 2015. The preclinical phase of the pathological process underlying sporadic
635 Alzheimer's disease. *Brain* **138**:2814–2833. doi:10.1093/brain/awv236

636 Braak H, Del Tredici K. 2011. The pathological process underlying Alzheimer's disease in individuals

637 under thirty. *Acta Neuropathol* **121**:171–181. doi:10.1007/s00401-010-0789-4

638 Branger P, Arenaza-Urquijo EM, Tomadesso C, Mézence F, André C, de Flores R, Mutlu J, de La Sayette
639 V, Eustache F, Chételat G, Rauchs G. 2016. Relationships between sleep quality and brain volume,
640 metabolism, and amyloid deposition in late adulthood. *Neurobiol Aging* **41**:107–114.
641 doi:10.1016/j.neurobiolaging.2016.02.009

642 Buysse DJ, Reynolds CF, Monk TH, Berman SR, Kupfer DJ. 1989. The Pittsburgh sleep quality index: A
643 new instrument for psychiatric practice and research. *Psychiatry Res* **28**:193–213.
644 doi:10.1016/0165-1781(89)90047-4

645 Carrier J, Viens I, Poirier G, Robillard R, Lafortune M, Vandewalle G, Martin N, Barakat M, Paquet J,
646 Filipini D. 2011. Sleep slow wave changes during the middle years of life. *Eur J Neurosci* **33**:758–
647 766. doi:10.1111/j.1460-9568.2010.07543.x

648 Chai X, Dage JL, Citron M. 2012. Constitutive secretion of tau protein by an unconventional mechanism.
649 *Neurobiol Dis* **48**:356–366. doi:10.1016/j.nbd.2012.05.021

650 Crimins JL, Rocher AB, Luebke JI. 2012. Electrophysiological changes precede morphological changes
651 to frontal cortical pyramidal neurons in the rTg4510 mouse model of progressive tauopathy. *Acta*
652 *Neuropathol* **124**:777–95. doi:10.1007/s00401-012-1038-9

653 Dash MB, Douglas CL, Vyazovskiy V V., Cirelli C, Tononi G. 2009. Long-Term Homeostasis of Extracellular
654 Glutamate in the Rat Cerebral Cortex across Sleep and Waking States. *J Neurosci* **29**:620–629.
655 doi:10.1523/JNEUROSCI.5486-08.2009

656 DeVos SL, Goncharoff DK, Chen G, Kebodeaux CS, Yamada K, Stewart FR, Schuler DR, Maloney SE,
657 Wozniak DF, Rigo F, Bennett CF, Cirrito JR, Holtzman DM, Miller TM. 2013. Antisense Reduction
658 of Tau in Adult Mice Protects against Seizures. *J Neurosci* **33**:12887–12897.
659 doi:10.1523/JNEUROSCI.2107-13.2013

660 Dijk D-J, Landolt H-P. 2019. Sleep Physiology, Circadian Rhythms, Waking Performance and the
661 Development of Sleep-Wake Therapeutics Handbook of Experimental Pharmacology. Springer,
662 Berlin, Heidelberg. pp. 1–41. doi:10.1007/164_2019_243

663 Dijk DJ, Czeisler C a. 1995. Contribution of the circadian pacemaker and the sleep homeostat to sleep
664 propensity, sleep structure, electroencephalographic slow waves, and sleep spindle activity in
665 humans. *J Neurosci* **15**:3526–3538.

666 Dudbridge F. 2013. Power and Predictive Accuracy of Polygenic Risk Scores. *PLoS Genet* **9**:e1003348.
667 doi:10.1371/journal.pgen.1003348

668 Ertekin-Taner N. 2010. Genetics of Alzheimer disease in the pre- and post-GWAS era. *Alzheimer's Res*
669 *Ther.* doi:10.1186/alzrt26

670 Escott-Price V, Sims R, Bannister C, Harold D, Vronskaya M, Majounie E, Badarinarayan N, Morgan K,
671 Passmore P, Holmes C, Powell J, Brayne C, Gill M, Mead S, Goate A, Cruchaga C, Lambert JC, Van

672 Duijn C, Maier W, Ramirez A, Holmans P, Jones L, Hardy J, Seshadri S, Schellenberg GD, Amouyel
673 P, Williams J. 2015. Common polygenic variation enhances risk prediction for Alzheimer's disease.
674 *Brain* **138**:3673–3684. doi:10.1093/brain/awv268

675 Ettore E, Bakardjian H, Solé M, Levy Nogueira M, Habert M-O, Gabelle A, Dubois B, Robert P, David R.
676 2019. Relationships between objective sleep parameters and brain amyloid load in subjects at
677 risk to Alzheimer's disease: the INSIGHT-preAD Study. *Sleep*. doi:10.1093/sleep/zsz137

678 Euesden J, Lewis CM, O'Reilly PF. 2015. PRSice: Polygenic Risk Score software. *Bioinformatics* **31**:1466–
679 8. doi:10.1093/bioinformatics/btu848

680 Fein JA, Sokolow S, Miller CA, Vinters H V, Yang F, Cole GM, Gylys KH. 2008. Co-localization of amyloid
681 beta and tau pathology in Alzheimer's disease synaptosomes. *Am J Pathol* **172**:1683–92.
682 doi:10.2353/ajpath.2008.070829

683 Gatz M, Reynolds CA, Fratiglioni L, Johansson B, Mortimer JA, Berg S, Fiske A, Pedersen NL. 2006. Role
684 of genes and environments for explaining Alzheimer disease. *Arch Gen Psychiatry* **63**:168–174.
685 doi:10.1001/archpsyc.63.2.168

686 Ge T, Chen C-Y, Ni Y, Feng Y-CA, Smoller JW. 2019. Polygenic prediction via Bayesian regression and
687 continuous shrinkage priors. *Nat Commun* **10**:1776. doi:10.1038/s41467-019-09718-5

688 Hall AM, Throesch BT, Buckingham SC, Markwardt SJ, Peng Y, Wang Q, Hoffman DA, Roberson ED.
689 2015. Tau-dependent Kv4.2 depletion and dendritic hyperexcitability in a mouse model of
690 Alzheimer's disease. *J Neurosci* **35**:6221–6230. doi:10.1523/JNEUROSCI.2552-14.2015

691 Hammad G, Reyt M. 2019. ghammad/pyActigraphy: Actigraphy made simple!
692 doi:10.5281/ZENODO.2537921

693 Hefti K, Holst SC, Sovago J, Bachmann V, Buck A, Ametamey SM, Scheidegger M, Berthold T, Gomez-
694 Mancilla B, Seifritz E, Landolt HP. 2013. Increased metabotropic glutamate receptor subtype 5
695 availability in human brain after one night without sleep. *Biol Psychiatry* **73**:161–168.
696 doi:10.1016/j.biopsych.2012.07.030

697 Holth JK, Bomben VC, Reed JG, Inoue T, Younkin L, Younkin SG, Pautler RG, Botas J, Noebels JL. 2013.
698 Tau Loss Attenuates Neuronal Network Hyperexcitability in Mouse and Drosophila Genetic
699 Models of Epilepsy. *J Neurosci* **33**:1651–1659. doi:10.1523/jneurosci.3191-12.2013

700 Holth JK, Fritschi SK, Wang C, Pedersen NP, Cirrito JR, Mahan TE, Finn MB, Manis M, Geerling JC, Fuller
701 PM, Lucey BP, Holtzman DM. 2019. The sleep-wake cycle regulates brain interstitial fluid tau in
702 mice and CSF tau in humans. *Science (80-)* eaav2546. doi:10.1126/science.aav2546

703 Horne JA, Ostberg O. 1976. A self-assessment questionnaire to determine morningness-eveningness
704 in human circadian rhythms. *Int J Chronobiol* **4**:97–110.

705 Huber R, Mäki H, Rosanova M, Casarotto S, Canali P, Casali AG, Tononi G, Massimini M. 2013. Human
706 cortical excitability increases with time awake. *Cereb Cortex* **23**:332–338.

707 doi:10.1093/cercor/bhs014

708 Jack CR, Bennett DA, Blennow K, Carrillo MC, Dunn B, Haeberlein SB, Holtzman DM, Jagust W, Jessen
709 F, Karlawish J, Liu E, Molinuevo JL, Montine T, Phelps C, Rankin KP, Rowe CC, Scheltens P, Siemers
710 E, Snyder HM, Sperling R, Elliott C, Masliah E, Ryan L, Silverberg N. 2018. NIA-AA Research
711 Framework: Toward a biological definition of Alzheimer's disease. *Alzheimer's Dement* **14**:535–
712 562. doi:10.1016/j.jalz.2018.02.018

713 John, Raven J. 2003. Raven Progressive Matrices Handbook of Nonverbal Assessment. Boston, MA:
714 Springer US. pp. 223–237. doi:10.1007/978-1-4615-0153-4_11

715 Johns MW. 1991. A new method for measuring daytime sleepiness: The Epworth Sleepiness Scale.
716 *Sleep* **14**:540–545. doi:10.1016/j.sleep.2007.08.004

717 Ju Y-ES, Ooms SJ, Sutphen C, Macauley SL, Zangrilli MA, Jerome G, Fagan AM, Mignot E, Zempel JM,
718 Claassen JAHR, Holtzman DM. 2017. Slow wave sleep disruption increases cerebrospinal fluid
719 amyloid- β levels. *Brain* **140**:2104–2111. doi:10.1093/brain/awx148

720 Klerman EB, Dijk DJ. 2005. Interindividual variation in sleep duration and its association with sleep debt
721 in young adults. *Sleep* **28**:1253–1259. doi:10.1093/sleep/28.10.1253

722 Lim ASP, Kowgier M, Yu L, Buchman AS, Bennett DA. 2013. Sleep Fragmentation and the Risk of Incident
723 Alzheimer's Disease and Cognitive Decline in Older Persons. *Sleep* **36**:1027–1032.
724 doi:10.5665/sleep.2802

725 Lucey BP, McCullough A, Landsness EC, Toedebusch CD, McLeland JS, Zaza AM, Fagan AM, McCue L,
726 Xiong C, Morris JC, Benzinger TLS, Holtzman DM. 2019. Reduced non-rapid eye movement sleep
727 is associated with tau pathology in early Alzheimer's disease. *Sci Transl Med* **11**:eaau6550.
728 doi:10.1126/SCITRANSLMED.AAU6550

729 Ly JQM, Gaggioni G, Chellappa SL, Papachilleos S, Brzozowski A, Borsu C, Rosanova M, Sarasso S,
730 Middleton B, Luxen A, Archer SN, Phillips C, Dijk D-J, Maquet P, Massimini M, Vandewalle G. 2016.
731 Circadian regulation of human cortical excitability. *Nat Commun* **7**:11828.
732 doi:10.1038/ncomms11828

733 Mander BA, Marks SM, Vogel JW, Rao V, Lu B, Saletin JM, Ancoli-Israel S, Jagust WJ, Walker MP. 2015.
734 β -amyloid disrupts human NREM slow waves and related hippocampus-dependent memory
735 consolidation. *Nat Neurosci* **18**:1051–1057. doi:10.1038/nn.4035

736 Marden JR, Mayeda ER, Walter S, Vivot A, Tchetgen EJT, Kawachi I, Glymour MM. 2016. Using an
737 Alzheimer disease polygenic risk score to predict memory decline in black and white Americans
738 over 14 years of follow-up. *Alzheimer Dis Assoc Disord* **30**:195–202.
739 doi:10.1097/WAD.000000000000137

740 Marioni RE, Harris SE, Zhang Q, McRae AF, Hagenaars SP, Hill WD, Davies G, Ritchie CW, Gale CR, Starr
741 JM, Goate AM, Porteous DJ, Yang J, Evans KL, Deary IJ, Wray NR, Visscher PM. 2018. GWAS on

742 family history of Alzheimer's disease. *Transl Psychiatry* **8**:99. doi:10.1038/s41398-018-0150-6

743 Martiskainen H, Helisalmi S, Viswanathan J, Kurki M, Hall A, Herukka SK, Sarajärvi T, Natunen T,
744 Kurkinen KMA, Huovinen J, Mäkinen P, Laitinen M, Koivisto AM, Mattila KM, Lehtimäki T, Remes
745 AM, Leinonen V, Haapasalo A, Soininen H, Hiltunen M. 2015. Effects of Alzheimer's disease-
746 associated risk loci on cerebrospinal fluid biomarkers and disease progression: A polygenic risk
747 score approach. *J Alzheimer's Dis* **43**:565–573. doi:10.3233/JAD-140777

748 Mather M, Harley CW. 2016. The Locus Coeruleus: Essential for Maintaining Cognitive Function and
749 the Aging Brain. *Trends Cogn Sci* **20**:214–26. doi:10.1016/j.tics.2016.01.001

750 Mondragón-Rodríguez S, Trillaud-Doppia E, Dudilot A, Bourgeois C, Lauzon M, Leclerc N, Boehm J,
751 Mondragon-Rodriguez S, Trillaud-Doppia E, Dudilot A, Bourgeois C, Lauzon M, Leclerc N, Boehm
752 J, Mondragón-Rodríguez S, Trillaud-Doppia E, Dudilot A, Bourgeois C, Lauzon M, Leclerc N, Boehm
753 J. 2012. Interaction of endogenous tau protein with synaptic proteins is regulated by N-methyl-
754 D-aspartate receptor-dependent tau phosphorylation. *J Biol Chem* **287**:32040–32053.
755 doi:10.1074/jbc.M112.401240

756 Mormino EC, Sperling RA, Holmes AJ, Buckner RL, De Jager PL, Smoller JW, Sabuncu MR. 2016.
757 Polygenic risk of Alzheimer disease is associated with early- and late-life processes. *Neurology*
758 **87**:481–488. doi:10.1212/WNL.0000000000002922

759 Musiek ES, Holtzman DM. 2015. Three dimensions of the amyloid hypothesis: Time, space and
760 “wingmen.” *Nat Neurosci*. doi:10.1038/nn.4018

761 Nilsen LH, Rae C, Ittner LM, Götz J, Sonnewald U. 2013. Glutamate metabolism is impaired in transgenic
762 mice with tau hyperphosphorylation. *J Cereb Blood Flow Metab* **33**:684–91.
763 doi:10.1038/jcbfm.2012.212

764 Norton S, Matthews FE, Barnes DE, Yaffe K, Brayne C. 2014. Potential for primary prevention of
765 Alzheimer's disease: An analysis of population-based data. *Lancet Neurol* **13**:788–794.
766 doi:10.1016/S1474-4422(14)70136-X

767 Oddo S, Caccamo A, Shepherd JD, Murphy MPP, Golde TE, Kaye R, Metherate R, Mattson MP, Akbari
768 Y, LaFerla FM. 2003. Triple-Transgenic Model of Alzheimer's Disease with Plaques and Tangles.
769 *Neuron* **39**:409–421. doi:10.1016/S0896-6273(03)00434-3

770 Ooms S, Overeem S, Besse K, Rikkert MO, Verbeek M, Claassen J a HR. 2014. Effect of 1 Night of Total
771 Sleep Deprivation on Cerebrospinal Fluid β -Amyloid 42 in Healthy Middle-Aged Men: A
772 Randomized Clinical Trial. *JAMA Neurol* **71**:971–977. doi:10.1001/jamaneurol.2014.1173

773 Pase MP, Himali JJ, Grima NA, Beiser AS, Satizabal CL, Aparicio HJ, Thomas RJ, Gottlieb DJ, Auerbach
774 SH, Seshadri S. 2017. Sleep architecture and the risk of incident dementia in the community.
775 *Neurology* **89**:10.1212/WNL.0000000000004373. doi:10.1212/WNL.0000000000004373

776 Polydoro M, Dzhala VI, Pooler AM, Nicholls SB, McKinney AP, Sanchez L, Pitstick R, Carlson GA, Staley

777 KJ, Spires-Jones TL, Hyman BT. 2014. Soluble pathological tau in the entorhinal cortex leads to
778 presynaptic deficits in an early Alzheimer's disease model. *Acta Neuropathol* **127**:257–270.
779 doi:10.1007/s00401-013-1215-5

780 Pooler AM, Noble W, Hanger DP. 2014. A role for tau at the synapse in Alzheimer's disease
781 pathogenesis. *Neuropharmacology* **76**:1–8. doi:10.1016/j.neuropharm.2013.09.018

782 Purcell S, Neale B, Todd-Brown K, Thomas L, Ferreira MAR, Bender D, Maller J, Sklar P, de Bakker PIW,
783 Daly MJ, Sham PC. 2007. PLINK: a tool set for whole-genome association and population-based
784 linkage analyses. *Am J Hum Genet* **81**:559–75. doi:10.1086/519795

785 Roh JH, Huang Y, Bero a. W, Kasten T, Stewart FR, Bateman RJ, Holtzman DM. 2012. Disruption of the
786 Sleep-Wake Cycle and Diurnal Fluctuation of β -Amyloid in Mice with Alzheimer's Disease
787 Pathology. *Sci Transl Med* **4**:150ra122-150ra122. doi:10.1126/scitranslmed.3004291

788 Sabuncu MR, Buckner RL, Smoller JW, Lee PH, Fischl B, Sperling RA. 2012. The association between a
789 polygenic Alzheimer score and cortical thickness in clinically normal subjects. *Cereb Cortex*
790 **22**:2653–2661. doi:10.1093/cercor/bhr348

791 Santoro ML, Ota V, de Jong S, Noto C, Spindola LM, Talarico F, Gouvea E, Lee SH, Moretti P, Curtis C,
792 Patel H, Newhouse S, Carvalho CM, Gadelha A, Cordeiro Q, Bressan RA, Belangero SI, Breen G.
793 2018. Polygenic risk score analyses of symptoms and treatment response in an antipsychotic-
794 naive first episode of psychosis cohort. *Transl Psychiatry* **8**:174. doi:10.1038/s41398-018-0230-7

795 Scammell TE, Arrigoni E, Lipton JO. 2017. Neural Circuitry of Wakefulness and Sleep. *Neuron*.
796 doi:10.1016/j.neuron.2017.01.014

797 Scheltens P, Blennow K, Breteler MMB, de Strooper B, Frisoni GB, Salloway S, Van der Flier WM. 2016.
798 Alzheimer's disease. *Lancet* **388**:505–517. doi:10.1016/S0140-6736(15)01124-1

799 Schmidt C, Peigneux P, Cajochen C. 2012. Age-related changes in sleep and circadian rhythms: Impact
800 on cognitive performance and underlying neuroanatomical networks. *Front Neurol* **JUL**:118.
801 doi:10.3389/fneur.2012.00118

802 Schultz MK, Gentzel R, Usenovic M, Gretzula C, Ware C, Parmentier-Batteur S, Schachter JB, Zariwala
803 HA. 2018. Pharmacogenetic neuronal stimulation increases human tau pathology and trans-
804 synaptic spread of tau to distal brain regions in mice. *Neurobiol Dis* **118**:161–176.
805 doi:10.1016/j.nbd.2018.07.003

806 Skorucak J, Arbon EL, Dijk D-J, Achermann P. 2018. Response to chronic sleep restriction, extension,
807 and total sleep deprivation in humans: adaptation or preserved sleep homeostasis? *Sleep* **1**–27.
808 doi:10.1093/ntr/ntx198/4104547/Differences-in-adolescent-e-cigarette-and

809 Slegers K, Bettens K, De Roeck A, Van Cauwenberghe C, Cuyvers E, Verheijen J, Struyfs H, Van Dongen
810 J, Vermeulen S, Engelborghs S, Vandenbulcke M, Vandenberghe R, De Deyn PP, Van Broeckhoven
811 C, BELNEU consortium. 2015. A 22-single nucleotide polymorphism Alzheimer's disease risk score

812 correlates with family history, onset age, and cerebrospinal fluid A β 42. *Alzheimers Dement*
813 **11**:1452–60. doi:10.1016/j.jalz.2015.02.013

814 Steriade M, Amzica F. 1998. Slow sleep oscillation, rhythmic K-complexes, and their paroxysmal
815 developments. *J Sleep Res* **7**:30–35. doi:10.1046/j.1365-2869.7.s1.4.x

816 Svetnik V, Snyder ES, Ma J, Tao P, Lines C, Herring WJ. 2017. EEG spectral analysis of NREM sleep in a
817 large sample of patients with insomnia and good sleepers: effects of age, sex and part of the
818 night. *J Sleep Res* **26**:92–104. doi:10.1111/jsr.12448

819 Sydow A, Van der Jeugd A, Zheng F, Ahmed T, Balschun D, Petrova O, Drexler D, Zhou L, Rune G,
820 Mandelkow E, D’Hooge R, Alzheimer C, Mandelkow E-M. 2011. Tau-induced defects in synaptic
821 plasticity, learning, and memory are reversible in transgenic mice after switching off the toxic Tau
822 mutant. *J Neurosci* **31**:2511–25. doi:10.1523/JNEUROSCI.5245-10.2011

823 Thal D, Rüb U, Orantes M, Braak H. 2002. Phases of A beta-deposition in the human brain and its
824 relevance for the development of AD. *Neurology* **58**:1791–1800.

825 Tononi G, Cirelli C. 2014. Sleep and the Price of Plasticity: From Synaptic and Cellular Homeostasis to
826 Memory Consolidation and Integration. *Neuron* **81**:12–34. doi:10.1016/j.neuron.2013.12.025

827 Van der Jeugd A, Hochgräfe K, Ahmed T, Decker JM, Sydow A, Hofmann A, Wu D, Messing L, Balschun
828 D, D’Hooge R, Mandelkow E-M, Jochen A, Van der Jeugd A, Hochgräfe K, Ahmed T, Decker JM,
829 Sydow A, Hofmann A, Wu D, Messing L, Balschun D, D’Hooge R, Mandelkow E-M, Jochen A. 2012.
830 Cognitive defects are reversible in inducible mice expressing pro-aggregant full-length human
831 Tau. *Acta Neuropathol* **123**:787–805. doi:10.1007/s00401-012-0987-3

832 Van Egroo M, Narbutas J, Chylinski D, Villar González P, Maquet P, Salmon E, Bastin C, Collette F,
833 Vandewalle G. 2019. Sleep–wake regulation and the hallmarks of the pathogenesis of Alzheimer’s
834 disease. *Sleep* **42**. doi:10.1093/sleep/zsz017

835 Viola AU, Archer SN, James LMM, Groeger JA, Lo JCY, Skene DJ, von Schantz M, Dijk DJ. 2007. PER3
836 Polymorphism Predicts Sleep Structure and Waking Performance. *Curr Biol* **17**:613–618.
837 doi:10.1016/j.cub.2007.01.073

838 Wallant DC t., Muto V, Gaggioni G, Jaspar M, Chellappa SL, Meyer C, Vandewalle G, Maquet P, Phillips
839 C. 2016. Automatic artifacts and arousals detection in whole-night sleep EEG recordings. *J*
840 *Neurosci Methods* **258**:124–133. doi:10.1016/j.jneumeth.2015.11.005

841 Yamada K, Holth JK, Liao F, Stewart FR, Mahan TE, Jiang H, Cirrito JR, Patel TK, Hochgräfe K, Mandelkow
842 E-M, Holtzman DM. 2014. Neuronal activity regulates extracellular tau in vivo. *J Exp Med*
843 **211**:387–393. doi:10.1084/jem.20131685

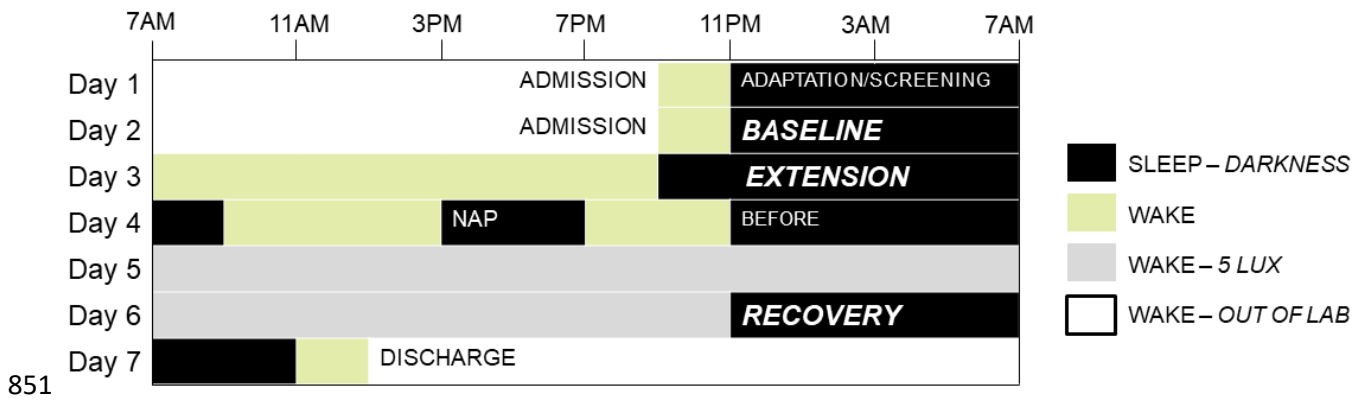
844 Yengo L, Sidorenko J, Kemper KE, Zheng Z, Wood AR, Weedon MN, Frayling TM, Hirschhorn J, Yang J,
845 Visscher PM. 2018. Meta-analysis of genome-wide association studies for height and body mass
846 index in ~700000 individuals of European ancestry. *Hum Mol Genet*. doi:10.1093/hmg/ddy271

847

848 **Figures and Tables**

849

850



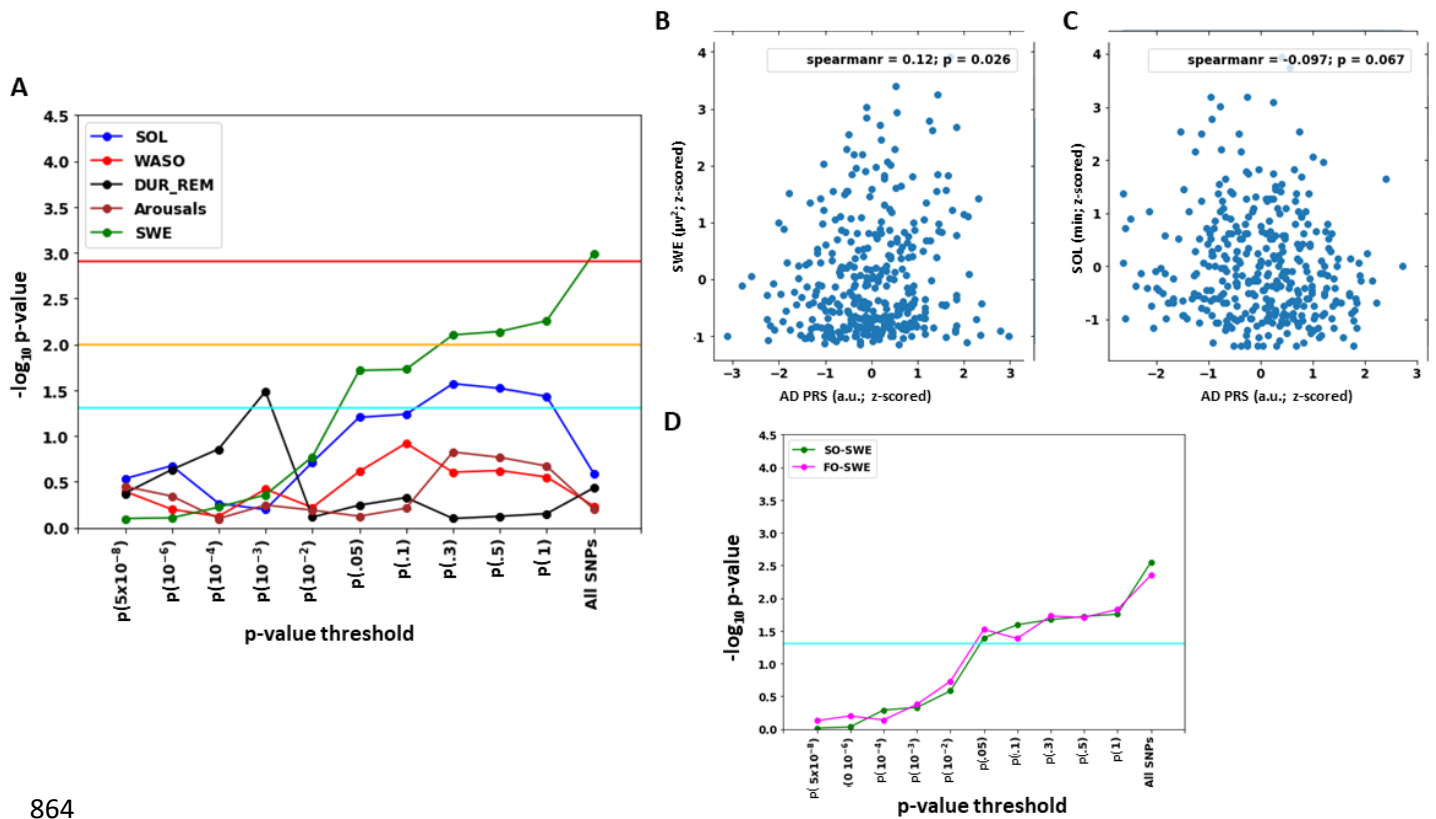
851

852

853 **Figure 1: Overview of the protocol.**

854

855 Following 3 weeks of regular sleep at habitual times, 363 healthy young men aged ~22 y
 856 complete a 7-day protocol (displayed for a participant sleeping from 11PM to 7PM).
 857 Adaptation/screening and baseline nights were scheduled at habitual sleep-wake times.
 858 Extension nights consisted of a 12h sleep opportunity centred around habitual sleep mid-
 859 point. Nap consisted of an afternoon 4h sleep opportunity. The “Before” (sleep deprivation)
 860 and recovery nights (from sleep deprivation) consisted of an 8h and 12h sleep opportunity
 861 respectively, all starting at habitual sleep time. Following the “before” night, volunteers
 862 completed a 40h sleep deprivation protocol under strictly controlled constant routine
 863 conditions in dim light. Sleep periods included in the current analyses are in bold and italic.



864

865

866 **Figure 2: Associations between Polygenic Risk Score (PRS) for AD and baseline night sleep**
 867 **metrics.**

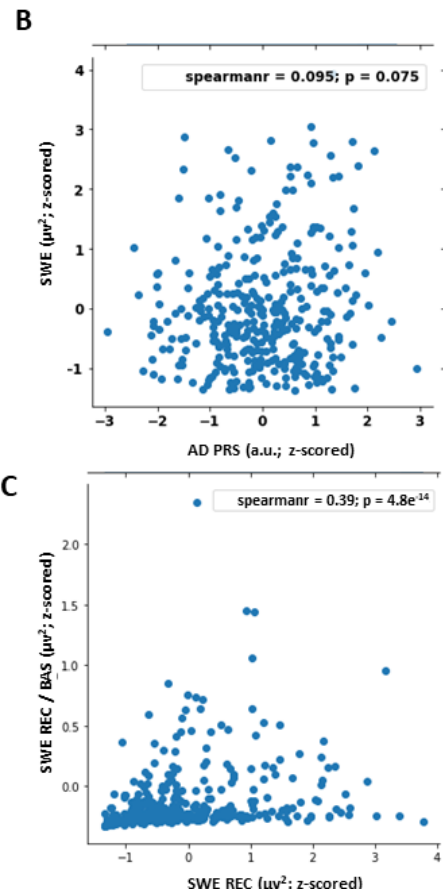
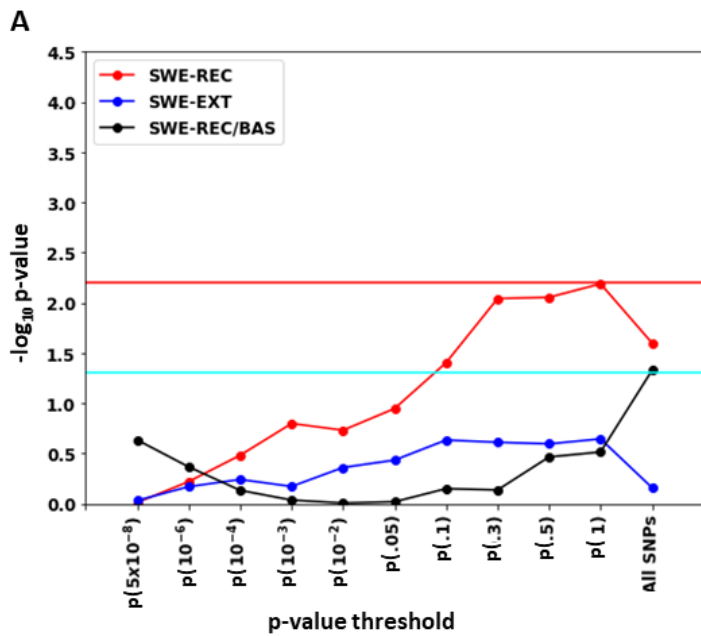
868 **A.** Statistical outcomes of GLMs with five sleep metrics of interest vs. AD PRS from
 869 conservative ($p < 5 \times 10^{-8}$) p-value threshold to using all SNPs. GLMs are corrected for age, BMI
 870 and total sleep time (TST). Negative log transformation of p-values of the associations are
 871 presented on the vertical axis. Horizontal lines in A and D indicate different p-values
 872 thresholds: light blue = .05 (uncorrected); orange = .01 (corrected for 5 sleep metrics); red =
 873 0.00125 (experiment-wise correction; see methods).

874 SOL: sleep onset latency; WASO: wake time after sleep onset; DUR_REM: duration of REM
 875 sleep; arousal: hourly rate of micro-arousal during sleep; SWE: slow wave energy in NREM
 876 sleep (0.5-4Hz)

877 **B.** Positive association between SWE during baseline night and AD PRS including All SNPs.
 878 Spearman correlation r is reported for completeness ($r = .12$, $p = .02$), refer to main text Table
 879 S2 for statistical outputs of GLMs.

880 **C.** Negative association between SOL during baseline night and AD PRS for $p < 0.3$. Spearman
 881 correlation r is reported for completeness ($r = -.11$, $p = .03$), refer to main text Table S2 for
 882 statistical outputs of GLMs.

883 **D.** GLMs including SWE separated in the slower (SO-SWE; 0.5-1Hz) and faster (FO-SWE; 1.25-
 884 4Hz) frequency range from conservative p-value thresholds to using all SNPs. Horizontal blue
 885 line indicate $p = 0.05$ significance level. GLMs are corrected for age, BMI and TST. Refer to
 886 main text Table S3 for statistical outputs of GLMs.



887

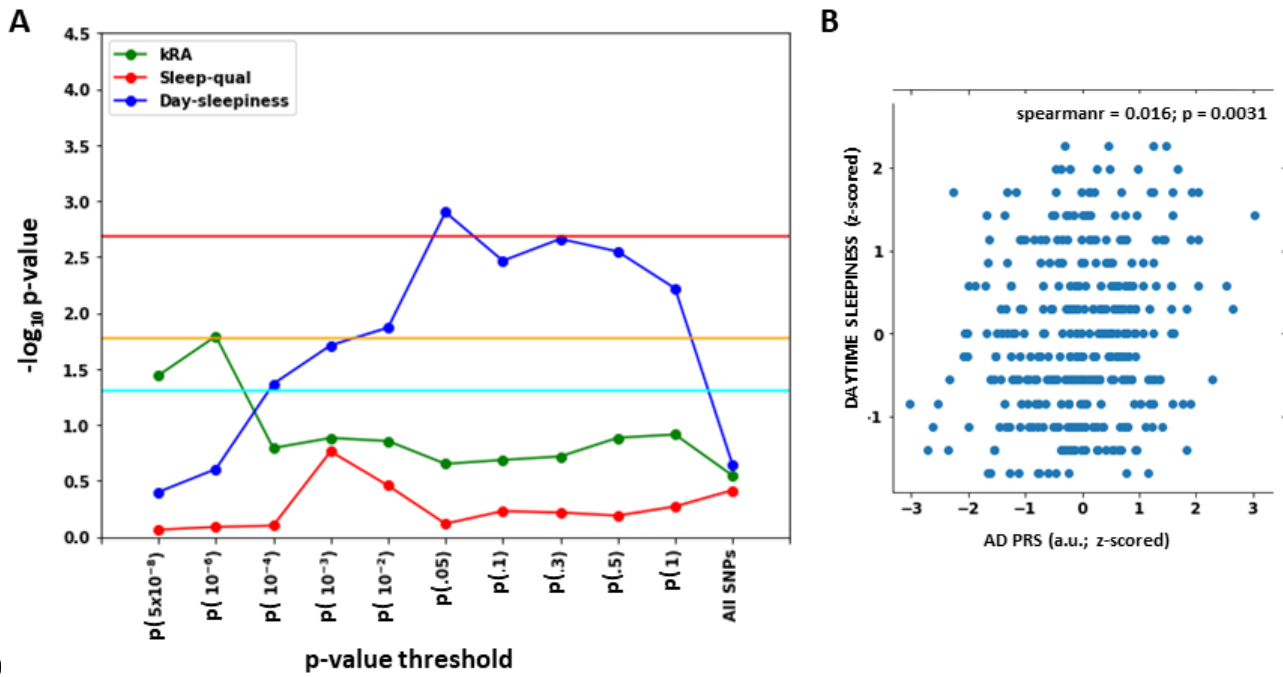
888 **Figure 3: Associations between Polygenic Risk Score (PRS) for AD and slow wave energy**
 889 **(SWE) during recovery and extension nights and with SWE rebound.**

890

891 **A.** Statistical outcomes of GLMs with SWE (0.5-4Hz) in the recovery (REC) and extension (EXT)
 892 nights and with SWE rebound (REC/BAS) vs. AD PRS from conservative ($p < 5 \times 10^{-8}$) to inclusive
 893 ($p < 1$) p-value level and using all SNPs. SWE rebound consist in the ratio between SWE in the
 894 first hour of sleep of recovery and baseline nights. GLMs are corrected for age and BMI, and
 895 TST for REC and EXT. Negative log transformation of p-values of the associations are presented
 896 on the vertical axis. Horizontal lines indicate different p-values thresholds: light blue = .05
 897 (uncorrected); red = 0.00625 (experiment-wise correction; see methods).

898 **B.** Positive association between SWE during recovery night and AD PRS at $p < 1$. Spearman
 899 correlation r is reported for completeness ($r = .01$, $p = .06$), refer to main text Table S4 for
 900 statistical outputs of GLMs.

901 **C.** Positive association between SWE during recovery and SWE rebound (SWE REC/BAS):
 902 Spearman correlation $r = .36$, $p < .001$.



91

904 **Figure 4: Associations between Polygenic Risk Score (PRS) for AD and non-EEG sleep metrics.**

905

906 **A.** Statistical outcomes of GLMs with actimetry-assessed sleep fragmentation (kRA), subjective
 907 sleep quality (Sleep-qual) and subjective daytime sleepiness (Day-sleepiness) vs. AD PRS from
 908 conservative ($p < 5 \times 10^{-8}$) to inclusive ($p < 1$) p-value thresholds and using all SNPs. GLMs are
 909 corrected for age and BMI. Negative log transformation of p-values of the associations are
 910 presented on the vertical axis. Horizontal lines indicate different p-values: light blue = .05
 911 (uncorrected); orange = .016 (corrected for 3 sleep metrics); red = 0.002 (experiment-wise
 912 correction).

913 **B.** Positive association between subjective daytime sleepiness and AD PRS at $p < 0.05$. Linear
 914 regression line shown for display purposes only; refer to main text and Table S5 for statistical
 915 outputs of GLMs.

916 **Table 1. Sample characteristics (mean \pm SD).**

N	363
Sex	Men
Ethnicity	Caucasian
Age (y)	22.10 \pm 2.73
Height (cm)	180.39 \pm 6.70
Body mass index (BMI) (kg m ⁻²)	22.15 \pm 2.31
IQ	123.88 \pm
	11.14
Education (y)	13.33 \pm 1.60
Mood	3.00 \pm 3.48
Sleep quality	3.46 \pm 1.76
Daytime sleepiness	5.94 \pm 3.54
Chronotype	50.11 \pm 8.25
Rest-activity Fragmentation (a.u.)	0.10 \pm 0.03
Baseline sleep duration (min)	451 \pm 41

917

918 Mood was estimated by the 21-item Beck Depression Inventory II (Beck et al., 1988), sleep
 919 quality by the Pittsburgh Sleep Quality Index (PSQI) (Buysse et al., 1989); daytime sleepiness
 920 by the Epworth Sleepiness Scale (ESS)(Johns, 1991); chronotype by the Horne-Östberg
 921 questionnaire (Horne and Ostberg, 1976). IQ was estimated using Raven Progressive
 922 Matrices (John and Raven, 2003). Rest fragmentation (arbitrary units, a.u.) was estimated as
 923 the probability of transition from rest to activity during estimated sleep based on actigraphy
 924 data from the 3 weeks of imposed regular sleep (Hammad and Reyt, 2019; Lim et al., 2013).